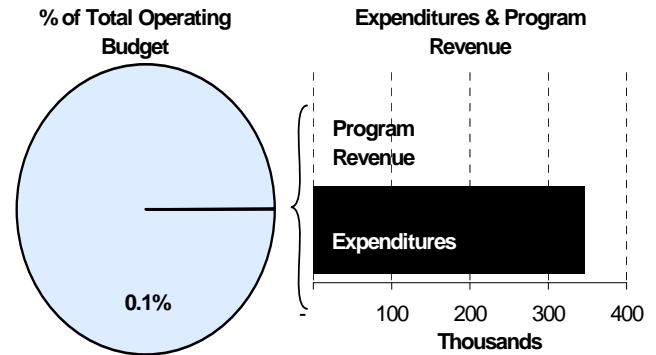
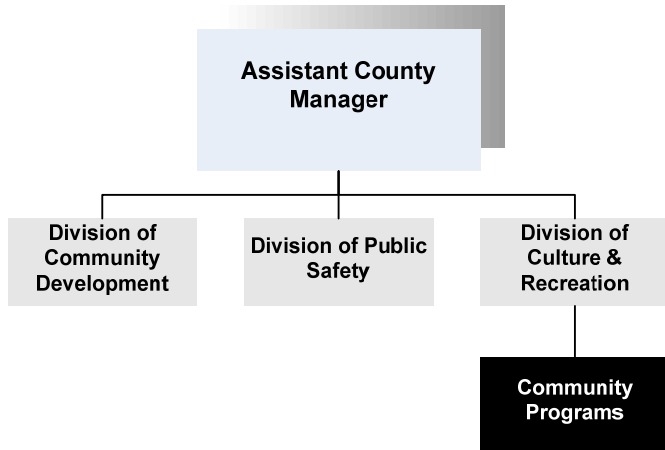




Ron Holt
 Assistant County Manager
 525 N. Main, Suite 343
 Wichita, Kansas 67203
 316-660-9393
rholt@sedgwick.gov

Mission:
 □ To enhance the quality of life in Sedgwick County by supporting cultural, entertainment, recreational, and related educational opportunities for citizens and visitors.



Program Information

The Community Programs fund center provides funding to local agencies for cultural and recreational activities that provide significant contributions to the community and the quality of life of its citizens. Agencies that have received funding in the past include the Kansas Junior Livestock Show, the Sedgwick County Fair Association, the Kansas African American Museum, the Arts Council, the Wichita/Sedgwick County Historical Museum, and the Greater Wichita Area Sports Commission.

The 2009 Kansas Junior Livestock Show will be held on September 25-28 at the Kansas Coliseum. The purposes of the Kansas Junior Livestock Association (KJLA) are to promote the welfare of the livestock industry, to further the education and cooperation of young people interested in livestock, and to aid in the attainment of mutual goals set by KJLA members interested in all phases of this business and all possible career opportunities.

Budgeted Allocations			
	2008 Actual	2009 Revised	2010 Budget
KS Junior Livestock	\$23,304	\$23,304	\$23,304
Sedgwick County Fair	\$21,500	\$21,500	\$21,500
The Kansas African American Museum	\$162,450	\$185,000	\$185,000
The Arts Council	\$13,500	\$15,000	\$15,000
Wichita/Sedgwick County Historical Museum	\$96,573	\$96,573	\$96,573
Greater Wichita Area Sports Commission	\$5,000	\$5,000	\$5,000
Wichita Festivals Riverfest	\$15,000	\$20,000	-
Wichita Festivals Flightfestival	\$25,000	-	-
City of Wichita Flightfestival	-	\$25,000	-
Kansas Coliseum	\$584,989	\$584,989	-
Wichita Open	\$7,500	\$7,500	-
Derby Historical Society	\$10,000	-	-
Total	\$964,816	\$983,866	\$346,377

The fairgrounds in Cheney, Kansas are home to the Sedgwick County Fair. The Fair is held annually four days in July.

The mission of the Arts Council is to advance and promote arts and culture in the Wichita community through advocacy, leadership, education and collaboration. The organization’s list of events features dance, film, gallery exhibitions, museums, music, senior programs, theater, university events, and youth programs.

Wichita Festivals, Inc. exists for the purpose of “Community Celebration.” Riverfest has grown from a one-day event with an attendance of several thousand, to a nine-day event attracting over 350,000 participants from Wichita and across the State of Kansas. The Wichita Flight Festival held each August includes air-shows, stunts, aviation displays, exhibits, educational speakers and a world of kid’s activities. In the 2009 Adopted Budget \$25,000 was approved for Wichita Festivals, Flight Festival. However, the expenditure was made to the City of Wichita, which resumed operating the Flight Festival in 2009.

Departmental Sustainability Initiatives

The Kansas African American Museum is a regional arts and cultural museum dedicated to the education, identification, acquisition, research, collection, exhibition, presentation and preservation of visual art forms, artists, programs and documents reflective of African American life and culture. Using the tool of the arts, its goal is to bridge the gap of understanding among the cultures.

The Greater Wichita Area Sports Commission is a private not-for-profit organization formed in August 1997. The Sports Commission was developed to improve the quality of life and the economy in Wichita through sports as well as provide support to existing events and organizations in our community.

Department Accomplishments

The Wichita/Sedgwick County Historical Museum’s mission is to educate the community and its visitors about local history by collecting, preserving, and interpreting materials reflecting the heritage of Wichita and Sedgwick County. The Museum is currently showcasing special exhibits titled *Fashion Fantasia: Mid-Century, Mid-America* and *Standing Up by Sitting-In: the Dockum Sit-In of 1958*.

Budget Adjustments

No increases were provided for contractals, commodities, and capital equipment from the 2009 Adopted budget for property tax supported funds.

Alignment with County Values

- **Equal Opportunity -**
A wide variety of cultural and recreational venues and events throughout Sedgwick County are supported by Community Programs
- **Commitment -**
Community Programs is committed to supporting activities that increase the quality of life for Sedgwick County residents

Goals & Initiatives

- **To enhance the quality of life in Sedgwick County by supporting cultural, entertainment, recreational, and related educational opportunities for citizens and visitors**

Significant Adjustments From Previous Budget Year

<ul style="list-style-type: none"> • Adjustment for two Housing and Urban Development (HUD) grant projects in Oaklawn • Shift Pavilion subsidy from the General Fund to the Arena Tax Fund • Eliminate funding to Wichita Festivals - Riverfest • Eliminate funding to the City of Wichita - Flightfestival 	Expenditures (505,279) (584,989) (20,000) (25,000)	Revenue	FTEs
	Total	(1,135,268)	- -

Budget Summary by Category

Budget Summary by Fund

Expenditures	2008	2009	2009	2010	% Chg.	Expenditures	2009	2010
	Actual	Adopted	Revised				Budget	09-10
Personnel	47,552	-	-	-	-	General Fund-110	998,866	346,377
Contractual Services	379,910	391,377	919,156	346,377	-62.3%	Misc. Grants-279	505,279	-
Debt Service	-	-	-	-	-			
Commodities	-	-	-	-	-			
Capital Improvements	100,000	-	-	-	-			
Capital Equipment	-	-	-	-	-			
Interfund Transfers	534,989	584,989	584,989	-	-100.0%			
Total Expenditures	1,062,451	976,366	1,504,145	346,377	-77.0%	Total Expenditures	1,504,145	346,377
Revenue								
Taxes	-	-	-	-	-			
Intergovernmental	-	-	505,279	-	-100.0%			
Charges For Service	-	-	-	-	-			
Other Revenue	-	-	-	-	-			
Total Revenue	-	-	505,279	-	-100.0%			
Full-Time Equivalents (FTEs)	-	-	-	-				

Budget Summary by Program

Program	Fund	Expenditures			2010	% Chg.	Full-Time Equivalents (FTEs)		
		2008	2009	2009			2009	2009	2010
		Actual	Adopted	Revised	Budget	09-10	Adopted	Revised	Budget
Community Pgms - Mus	110	1,062,451	976,366	998,866	346,377	-65.3%	-	-	-
HUD Oaklawn	279	-	-	505,279	-	-100.0%	-	-	-
Total		1,062,451	976,366	1,504,145	346,377	-77.0%	-	-	-

