

# Criminal Justice Coordinating Council

## Population Report & Program Trends

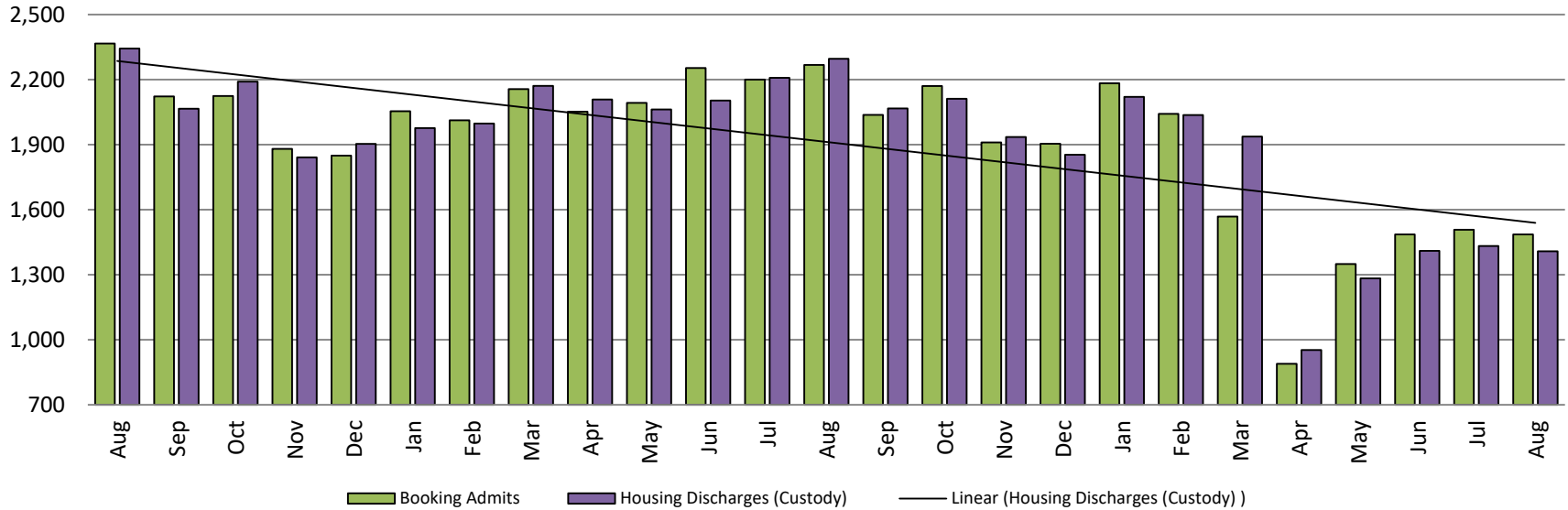
September 2020



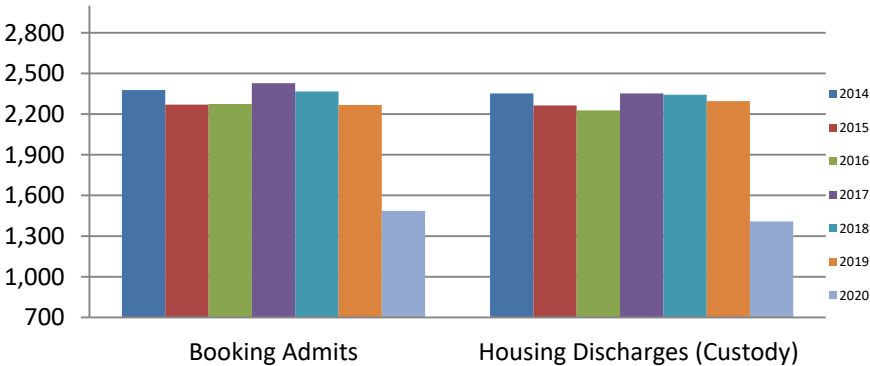
*Sedgwick County...*  
*working for you*

# Detention Facility

## Booking Admits & Housing Discharges from Custody August 2018 - present



### Bookings Year over Year: Month of August



### Bookings August

### Housing Discharges August

2018: 2,366

2018: 2,343

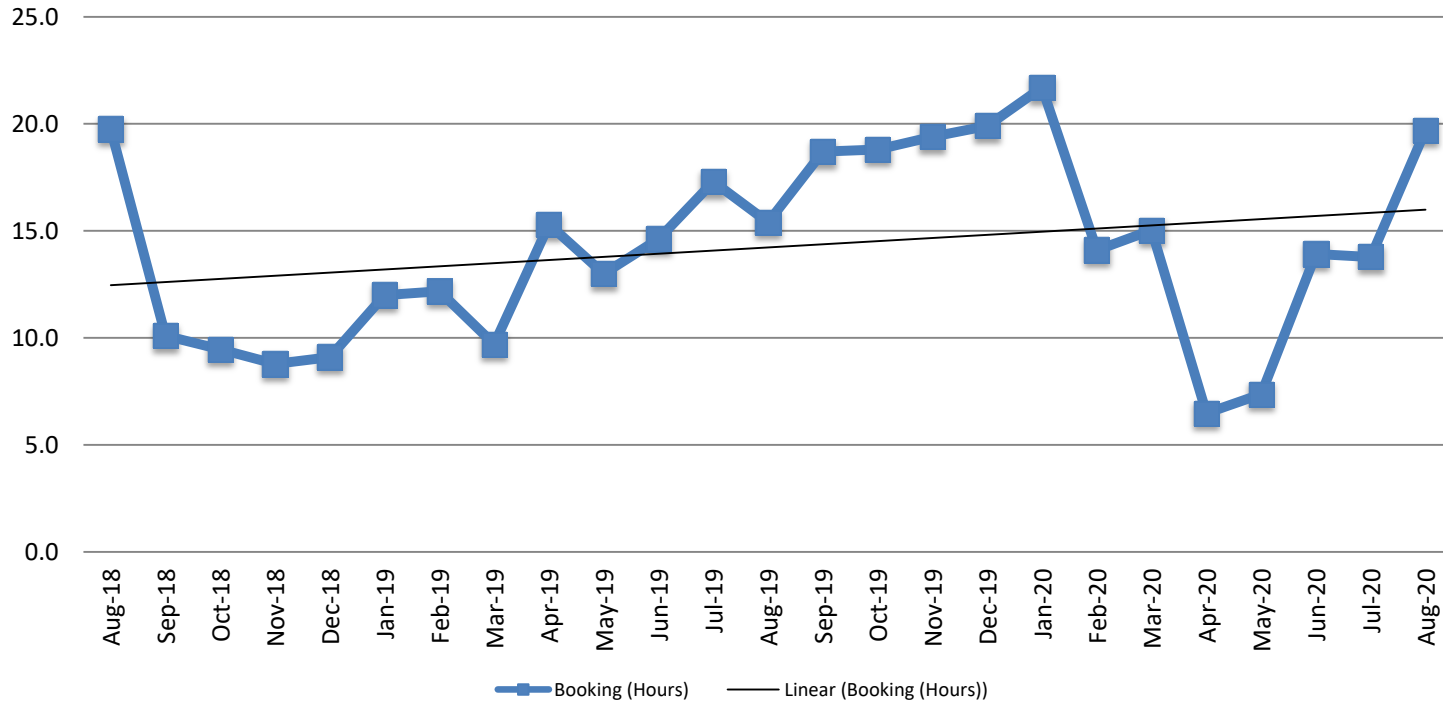
2019: 2,267

2019: 2,296

2020: 1,486

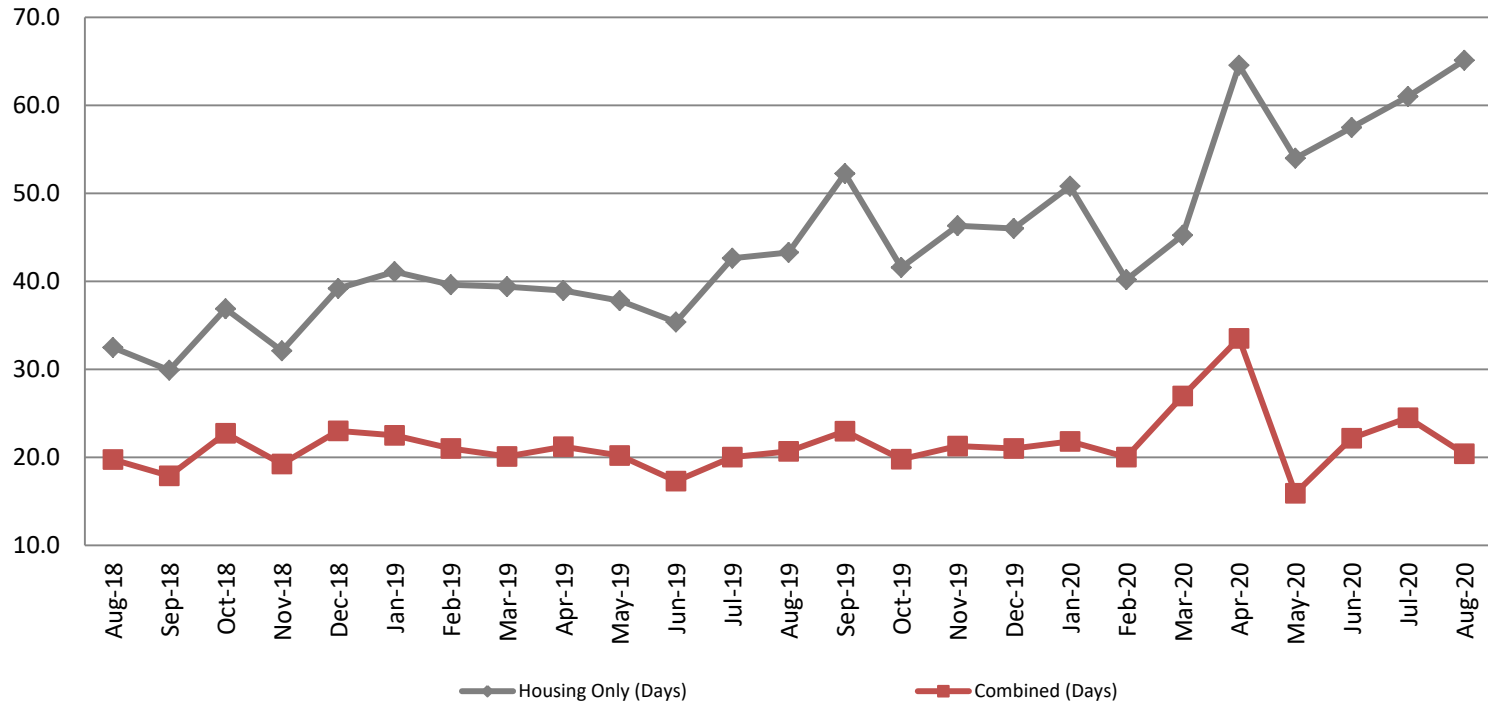
2020: 1,408

## Average Length of Stay: Booking (Hours) August 2018 - present



August	August YTD Average
2018: 19.8	2018: 10.8
2019: 15.4	2019: 13.7
2020: 19.7	2020: 14.0

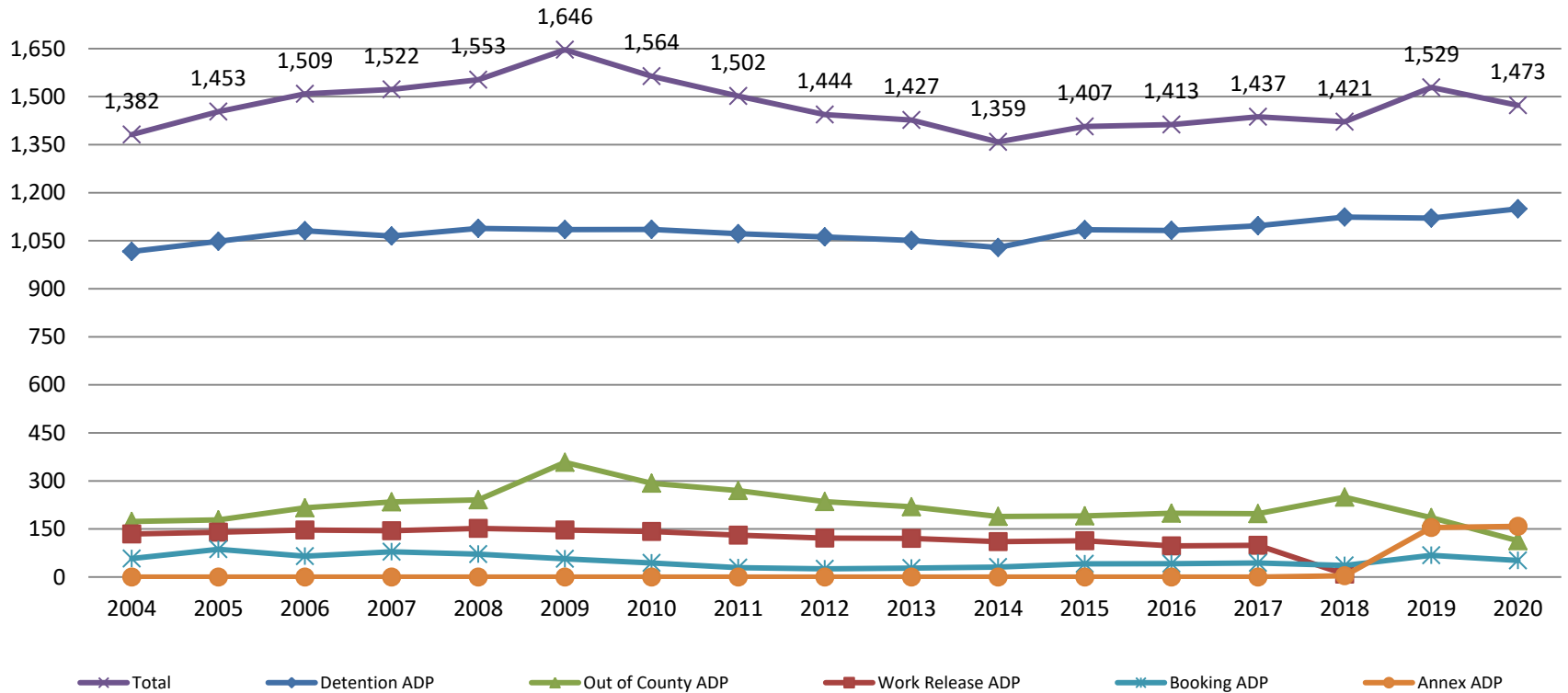
## Average Length of Stay: Housing & Combined (Days) August 2018 - present



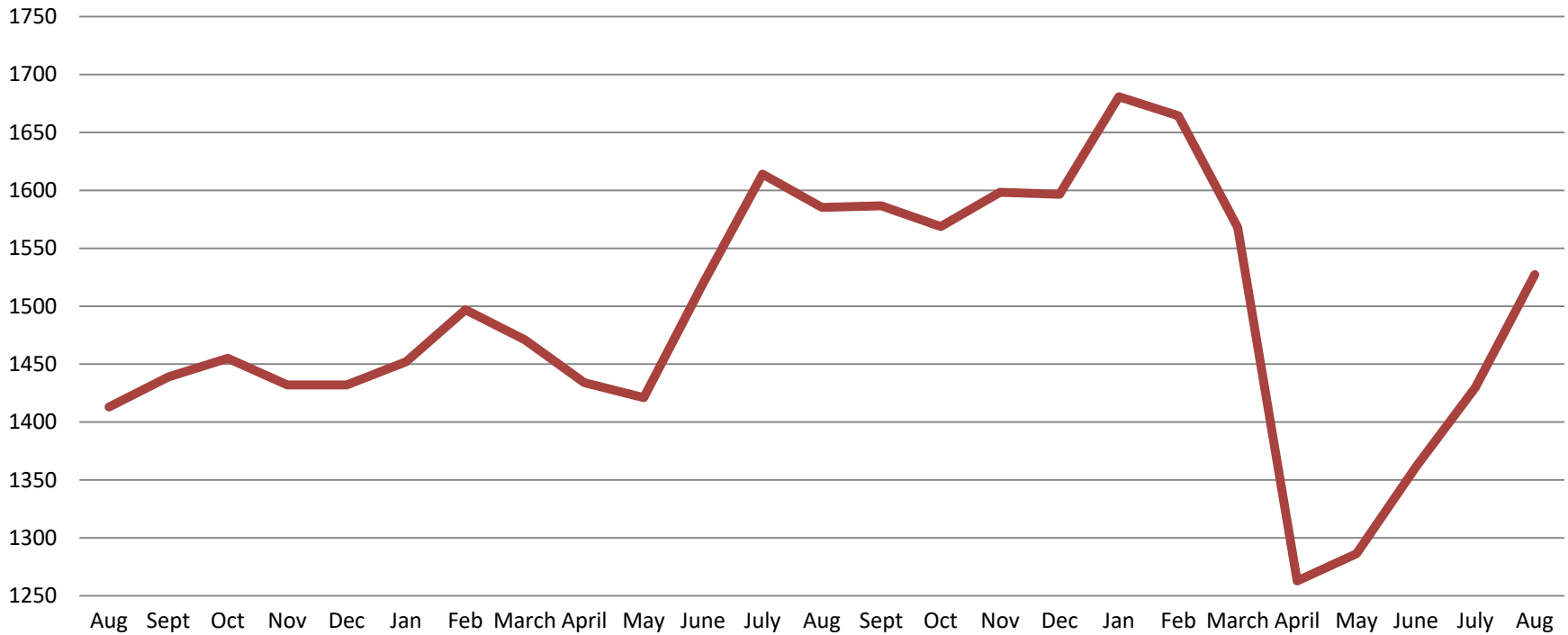
Month Year	Housing Only	Housing YTD AVG	Combined Days	Combined YTD AVG
August 2018	32.5	34.8	19.8	21.1
August 2019	43.3	39.8	20.7	20.4
August 2020	65.1	54.8	20.4	23.2

# Jail: Annual Average Daily Population (ADP)

**TRENDS: Booking, Detention, Work Release, & Out of County Annual ADP:  
2004 - present**

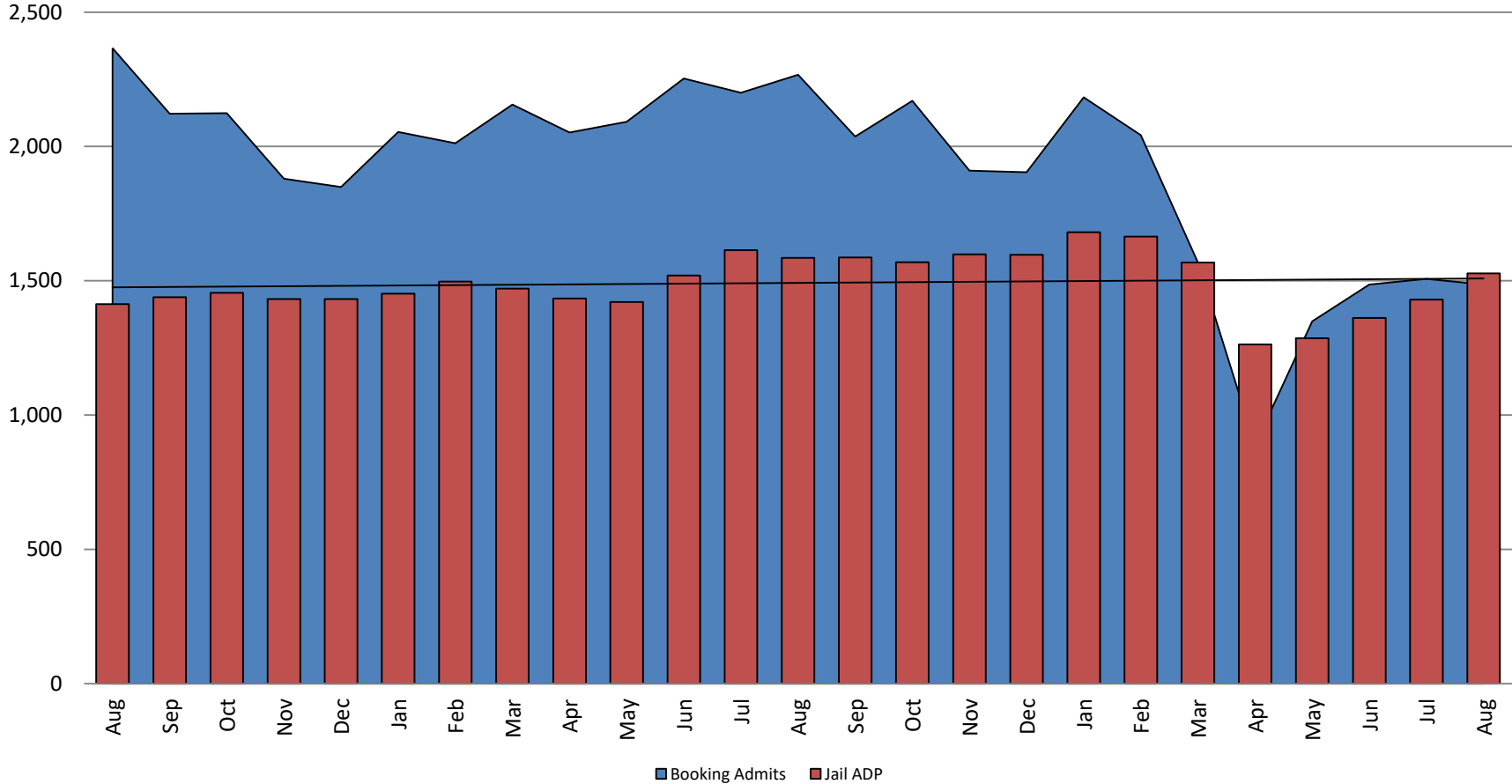


## TOTAL MONTHLY ADP: JAIL (Booking, Detention Facility, Annex, & Out of County) August 2018 - present



August 2018	August 2019	August 2020
1,413	1,585	1,527

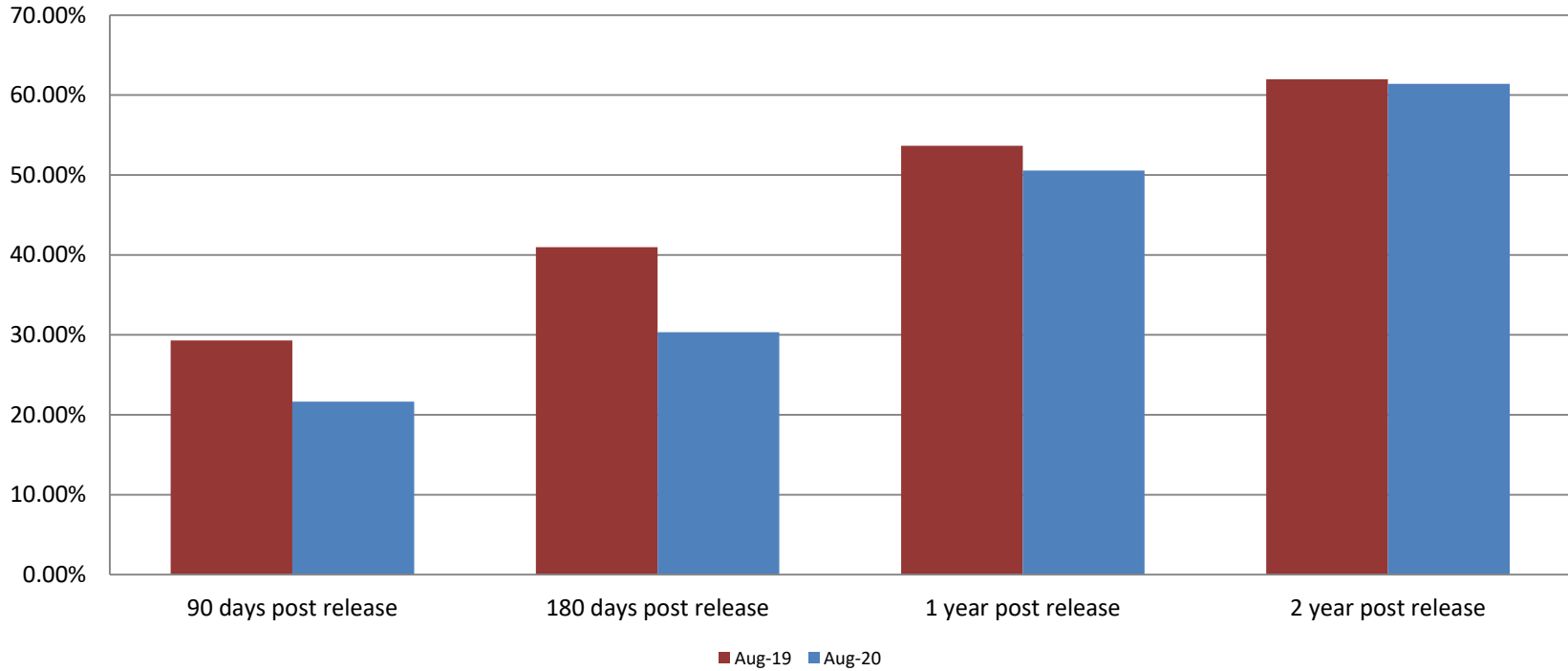
## Booking Admits & Total Monthly ADP (Jail): August 2018 - present



Jail includes individuals in booking, detention, work release and out-of county (combined)  
(data obtained from detention facility)



## Percent of released inmates rearrested August

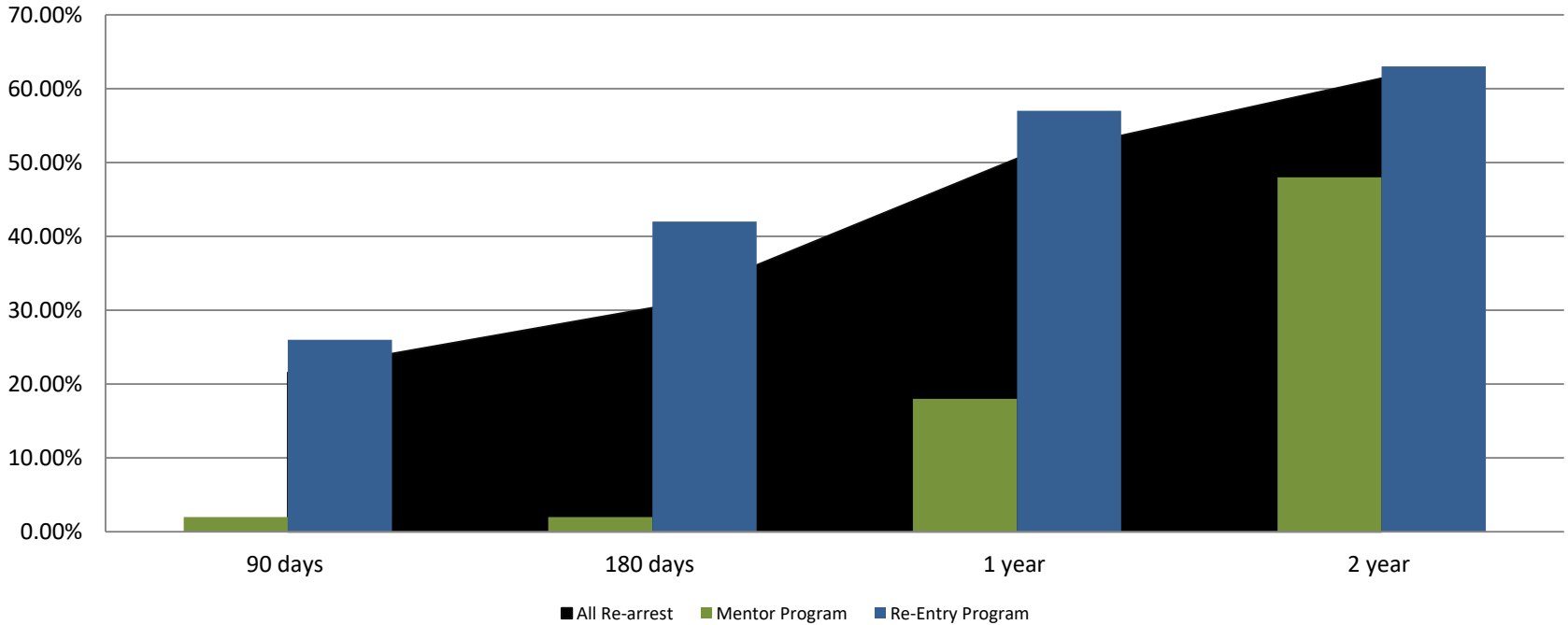


Month Year	90 Days	180 Days	1 Year	2 Years
August 2019	29.30%	40.97%	53.65%	61.97%
August 2020	21.64%	30.33%	50.54%	61.41%



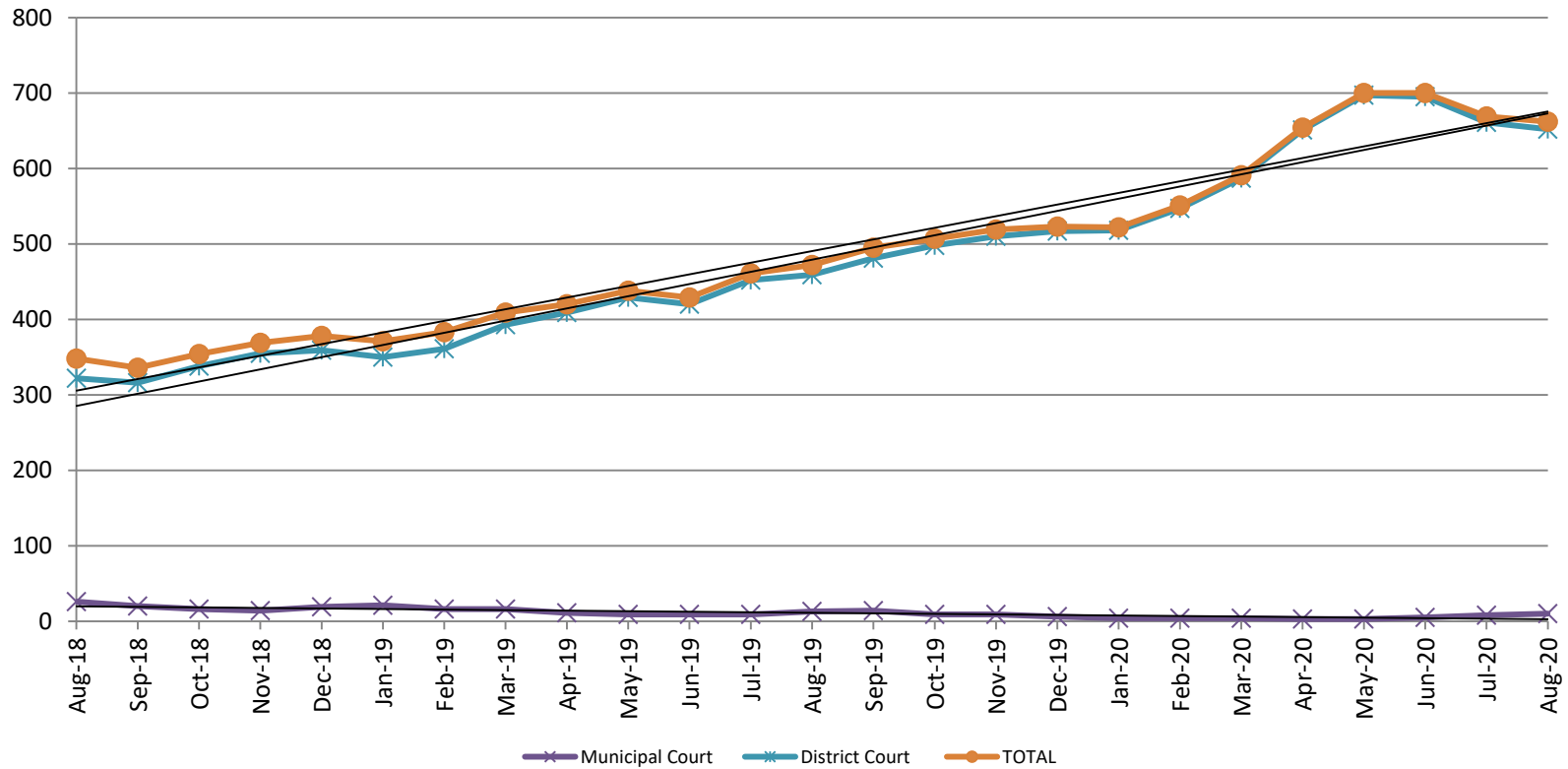


## Recidivism by Programs August 2020



August 2020	90 Days	180 Days	1 year	2 years
All Re-arrests	21.64%	30.33%	50.54%	61.41%
Mentor Program	2%	2%	18%	48%
Re-Entry Program	26%	42%	57%	63%

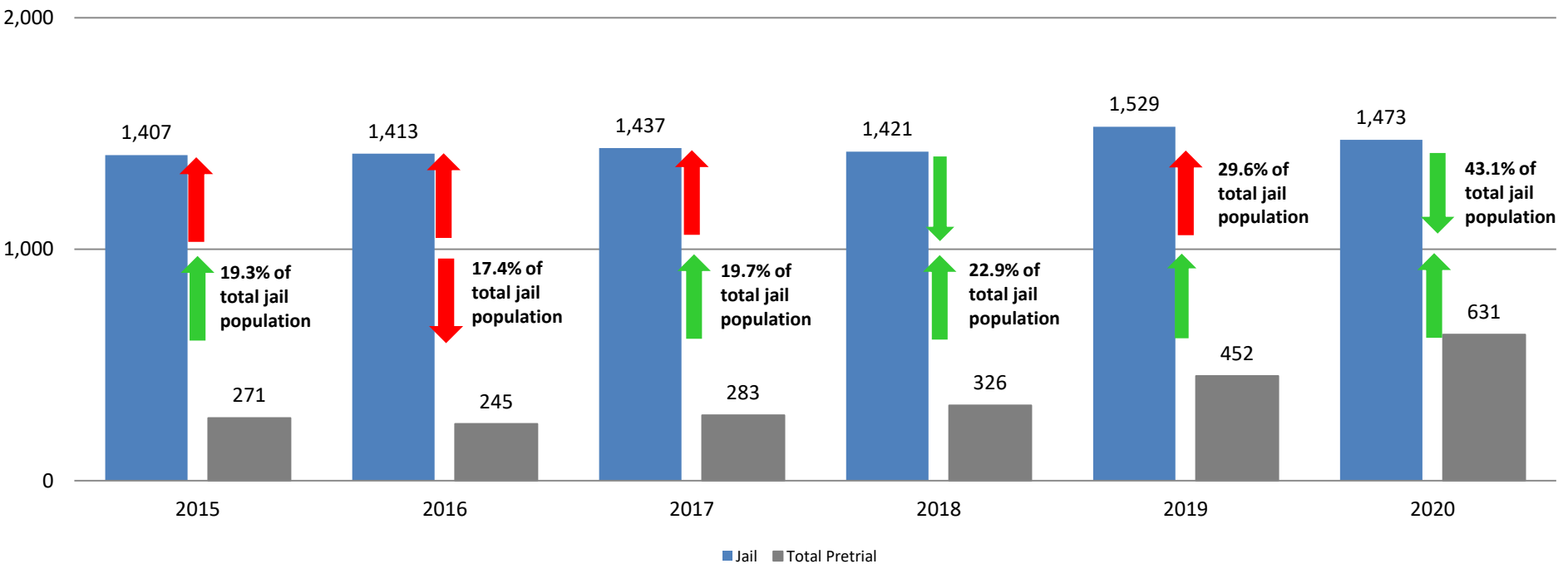
## Pretrial Services Program (PSP) Monthly ADP: August 2018 - present



August	2018 ADP	2019 ADP	2020 ADP	2018 YTD Avg.	2019 YTD Avg.	2020 YTD Avg.
Muni. Court	26	13	10	28	13	5
Dist. Court	322	459	652	281	409	626
<b>Total</b>	<b>348</b>	<b>472</b>	<b>662</b>	<b>309</b>	<b>423</b>	<b>631</b>

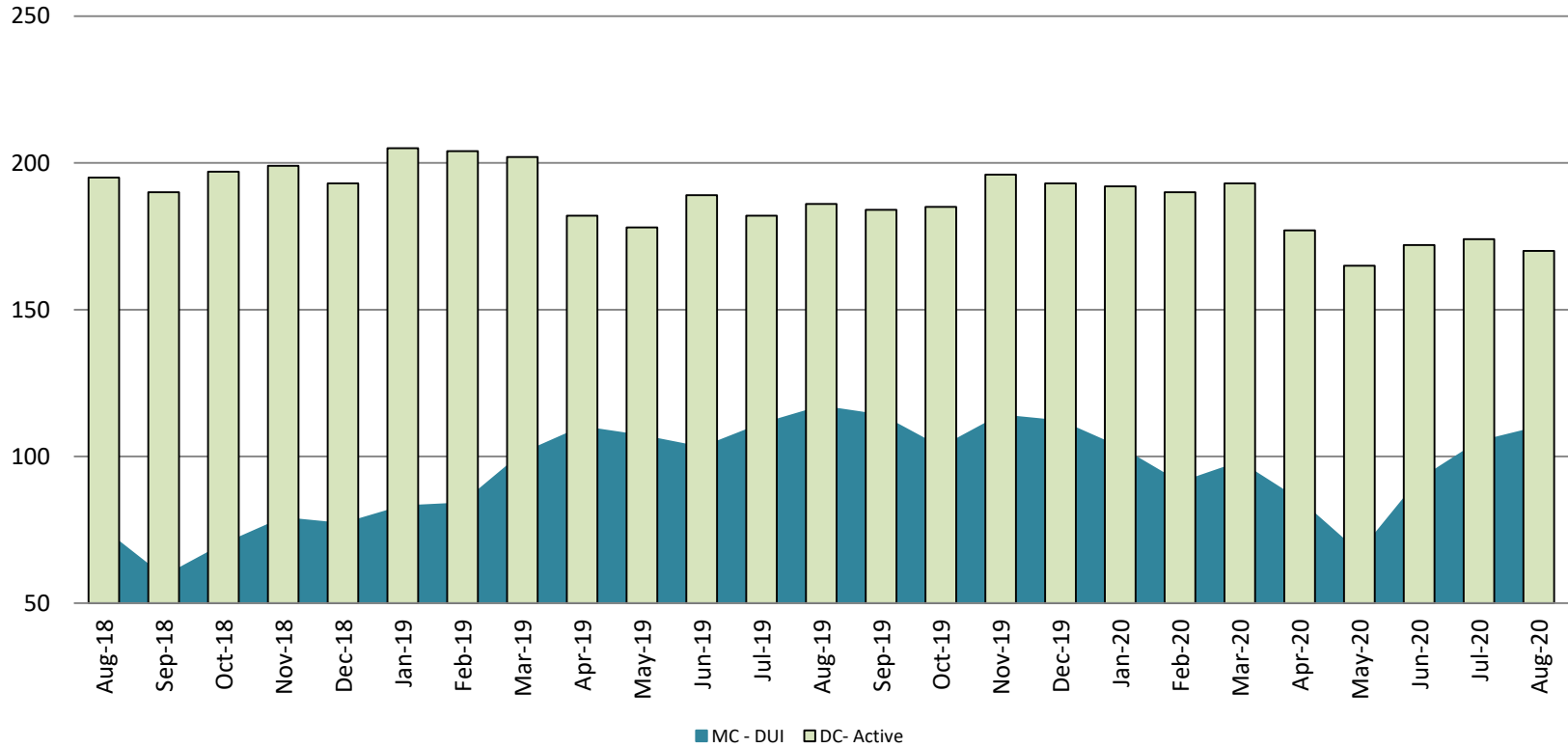
# Correlation: Total & PSP

## Total Annual ADP: 2015 - present



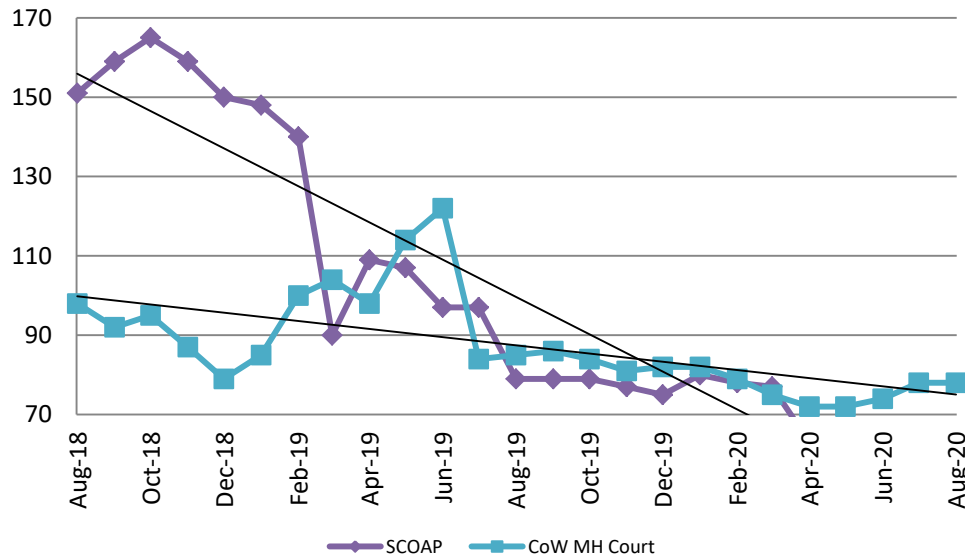
## Diversion - Active Caseload

### August 2018 - present

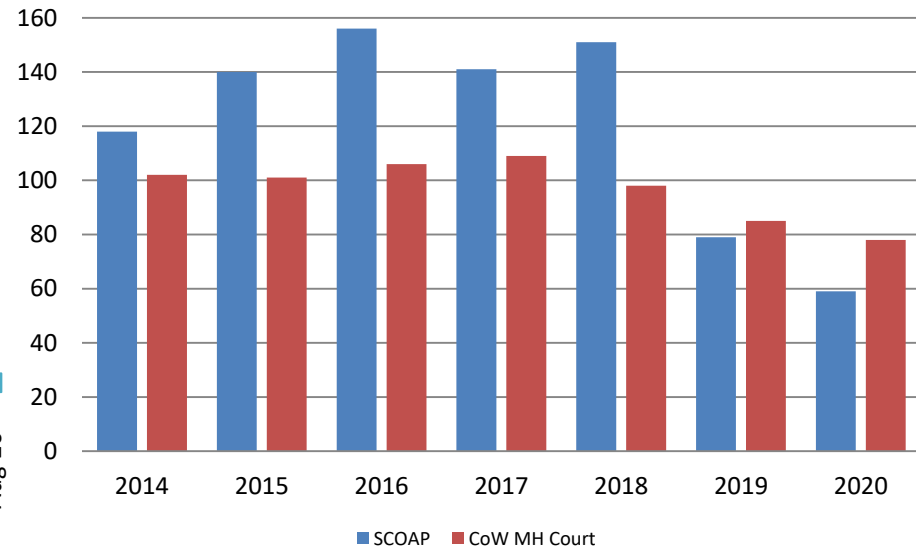


August	2018	2019	2020	2018 YTD Avg.	2019 YTD Avg.	2020 YTD Avg.
Muni. Court- DUI	75	117	110	76	102	94
Dist. Court- Active	195	186	170	199	191	179

## Mental Health - ADP August 2018 - present

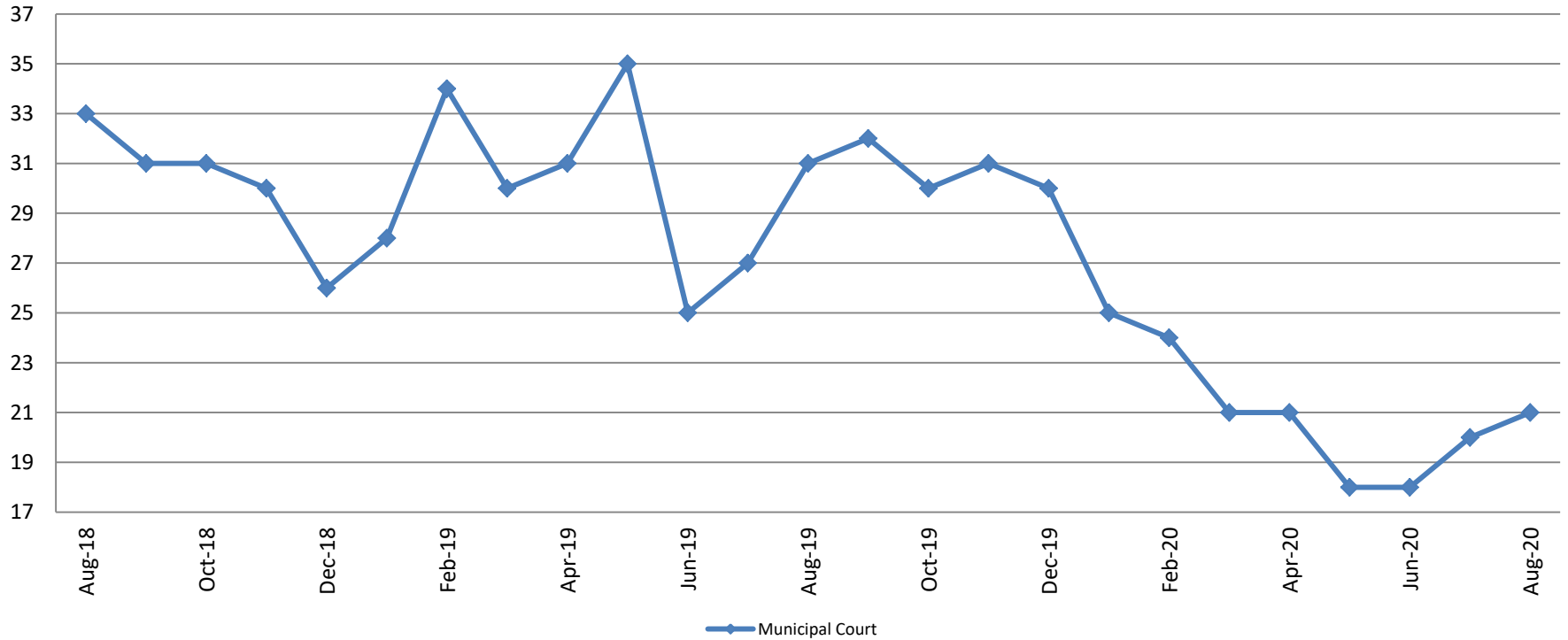


## Mental Health ADP Year over Year - August



August	2018 ADP	2019 ADP	2020 ADP	2018 YTD Avg.	2019 YTD Avg.	2020 YTD Avg.
SCOAP	151	79	59	142	108	66
MH Court	98	85	78	99	99	76

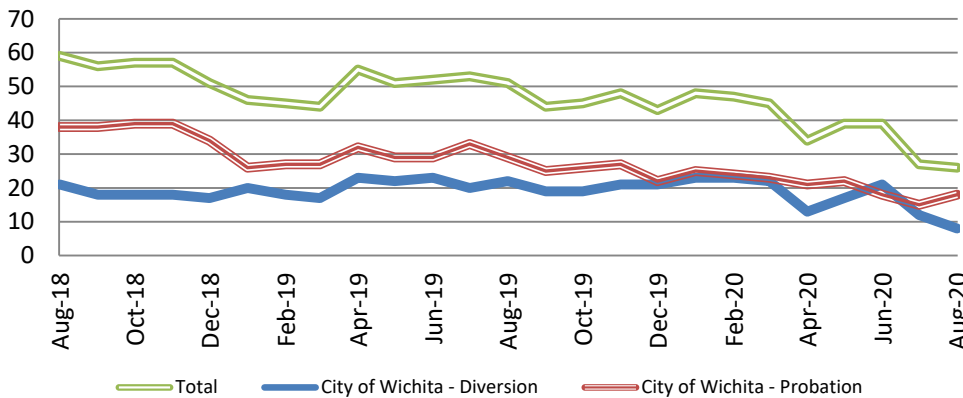
## Day Reporting - Active Caseload August 2018 - present



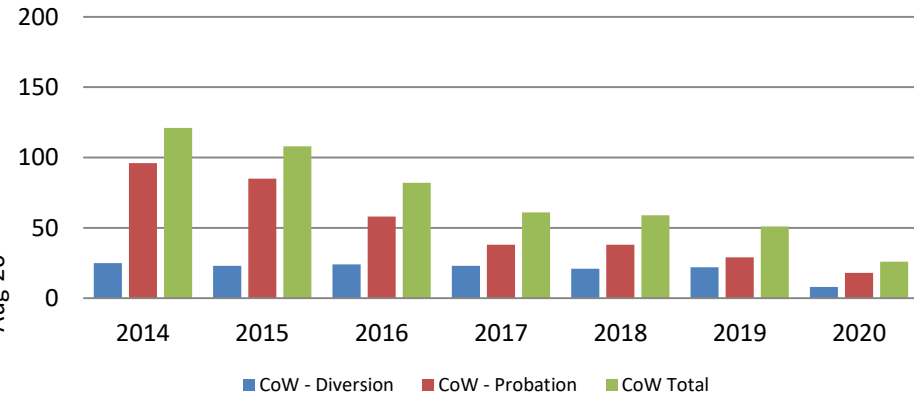
August	2015	2016	2017	2018	2019	2020
Muni. Court	64	31	40	33	31	21
Muni. Court YTD Avg.	71	44	35	35	30	21



## Drug Court - City of Wichita ADP: August 2018 - present



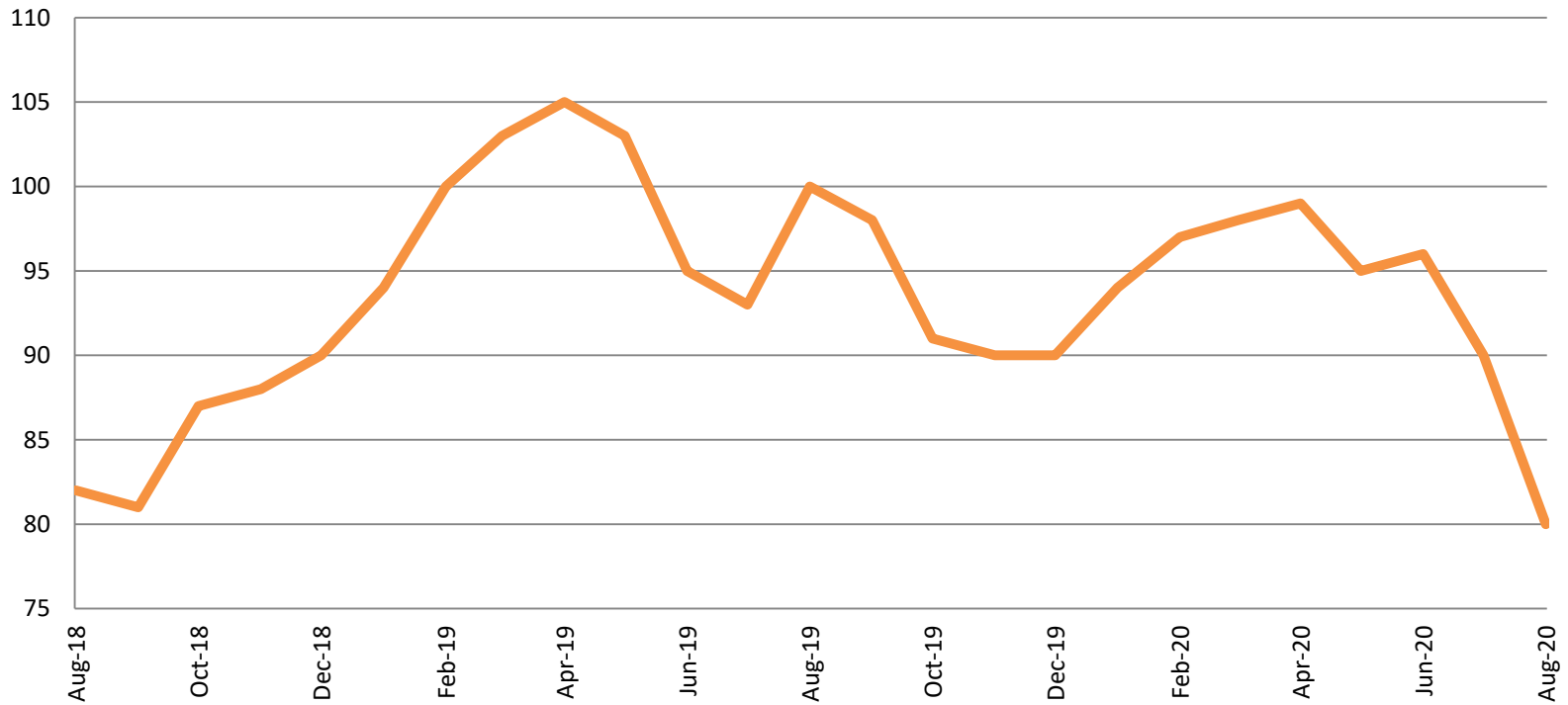
## Drug Court- City of Wichita Year over Year - August



August	2018	2019	2020
Diversion	21	22	8
Probation	38	29	18
Total	59	51	26



## Drug Court - Sedgwick County ADP: August 2018 - present

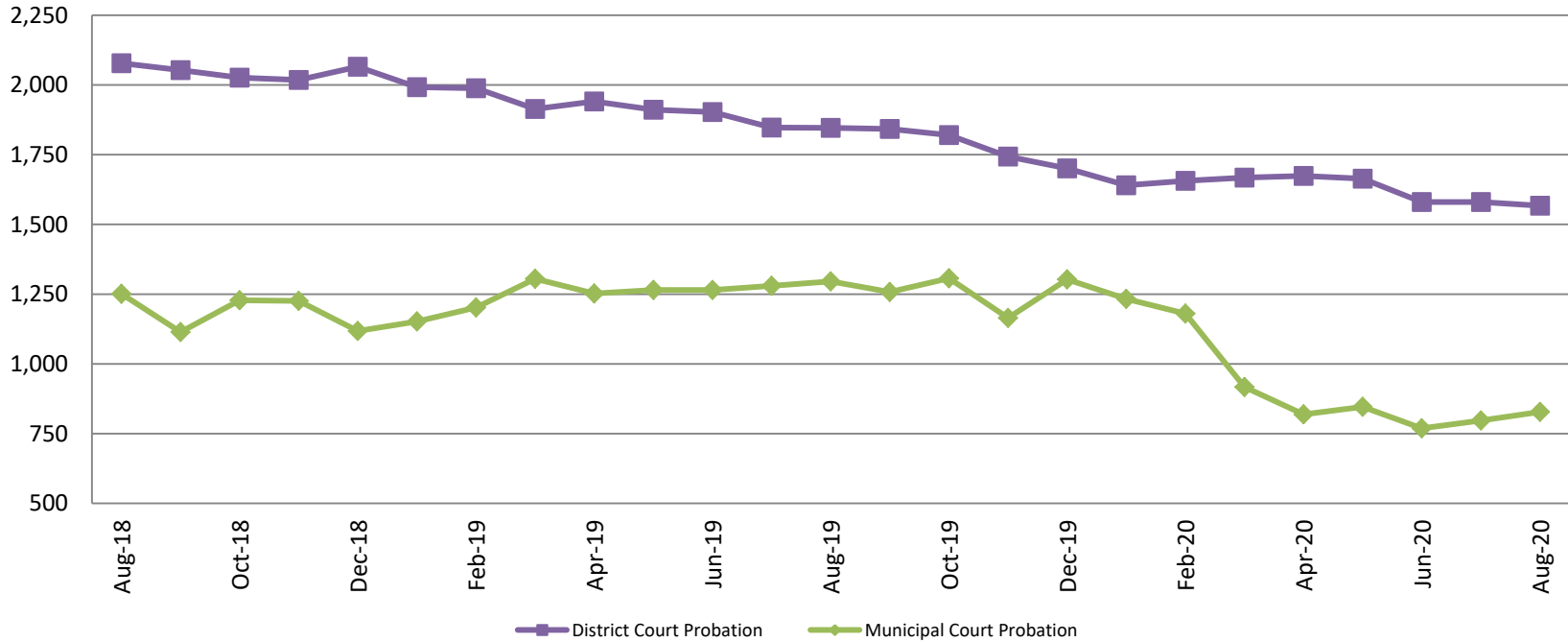


August	2018	2019	2020
Sedg. Co. ADP	82	100	80
YTD Avg.	84	99	94





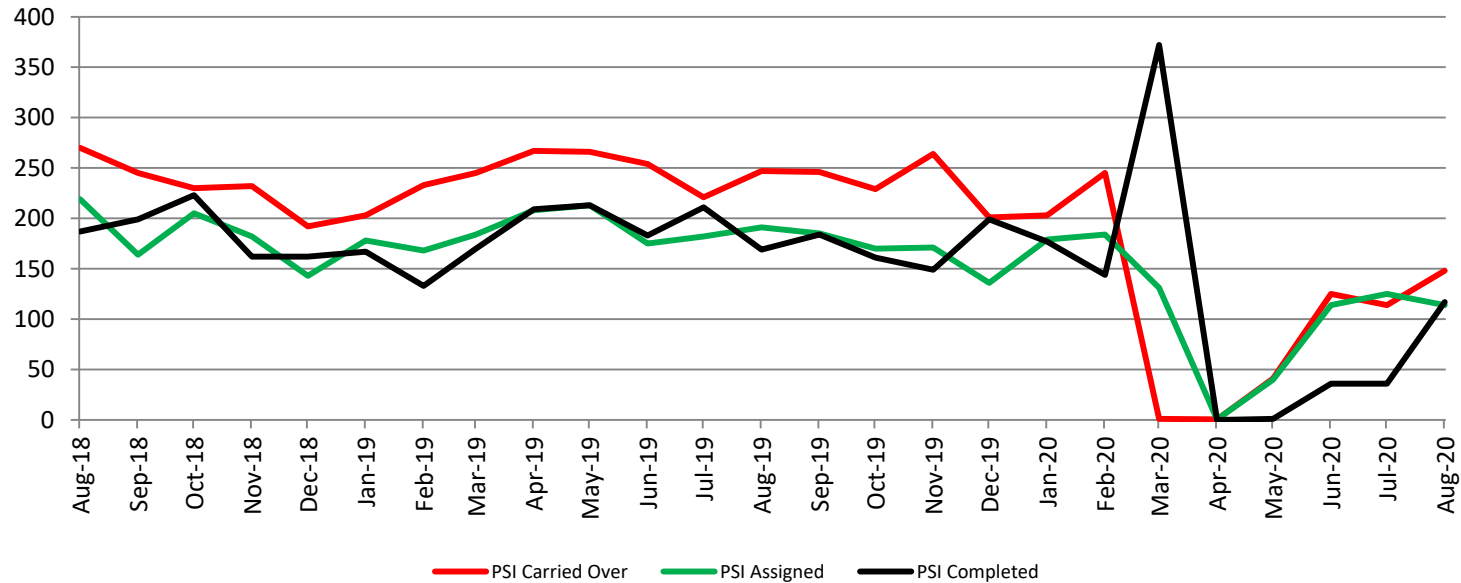
## Probation - Active Caseloads August 2018 - present



August	2018	2019	2020	2018 YTD Avg.	2019 YTD Avg.	2020 YTD Avg.
Dist. Court Probation	2,078	1,846	1,567	2,120	1,918	1,629
Muni. Court Probation	1,251	1,296	828	1,225	1,252	924



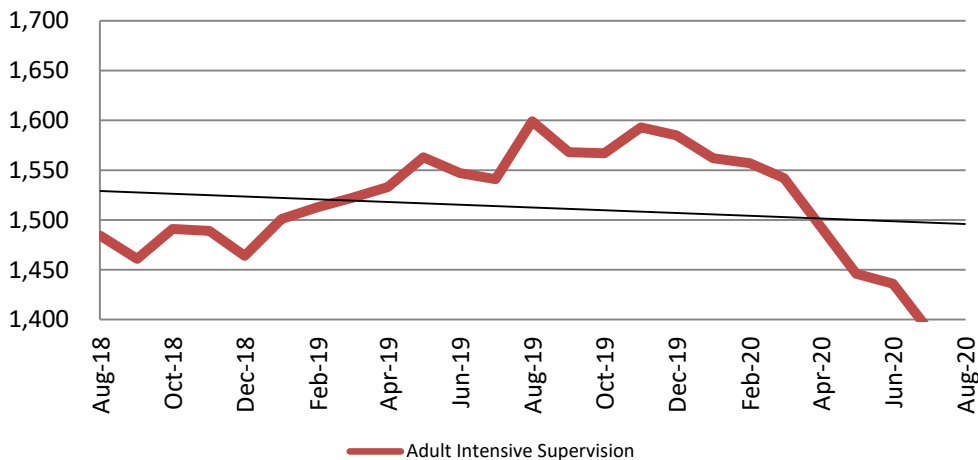
## District Court Probation: Pre-Sentence Investigation August 2018 - present



<b>August</b>	<b>2018</b>	<b>2019</b>	<b>2020</b>
Carried Over	270	247	148
Assigned	219	191	114
Completed	187	169	117

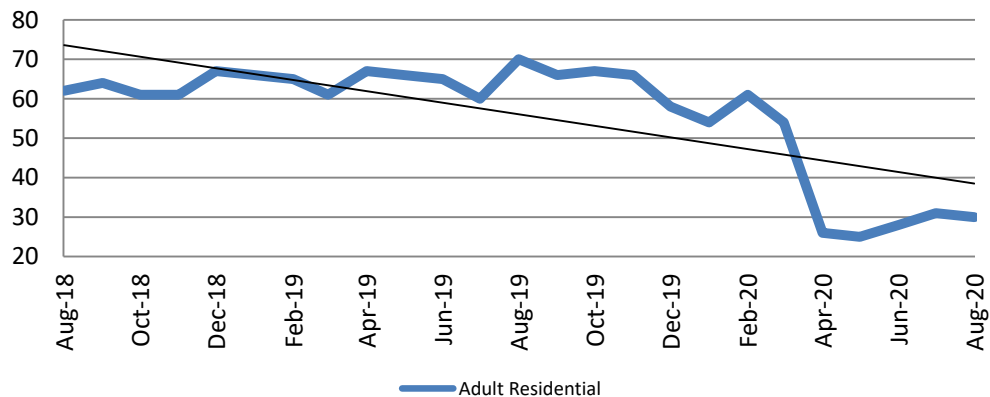
# Community Corrections

**Adult Intensive Supervision Probation (AISP):  
ADP August 2018- present**



Year	August	August YTD Avg.
2018	1,484	1,470
2019	1,599	1,540
2020	1,366	1,474

**Adult Residential: ADP  
August 2018 - present**

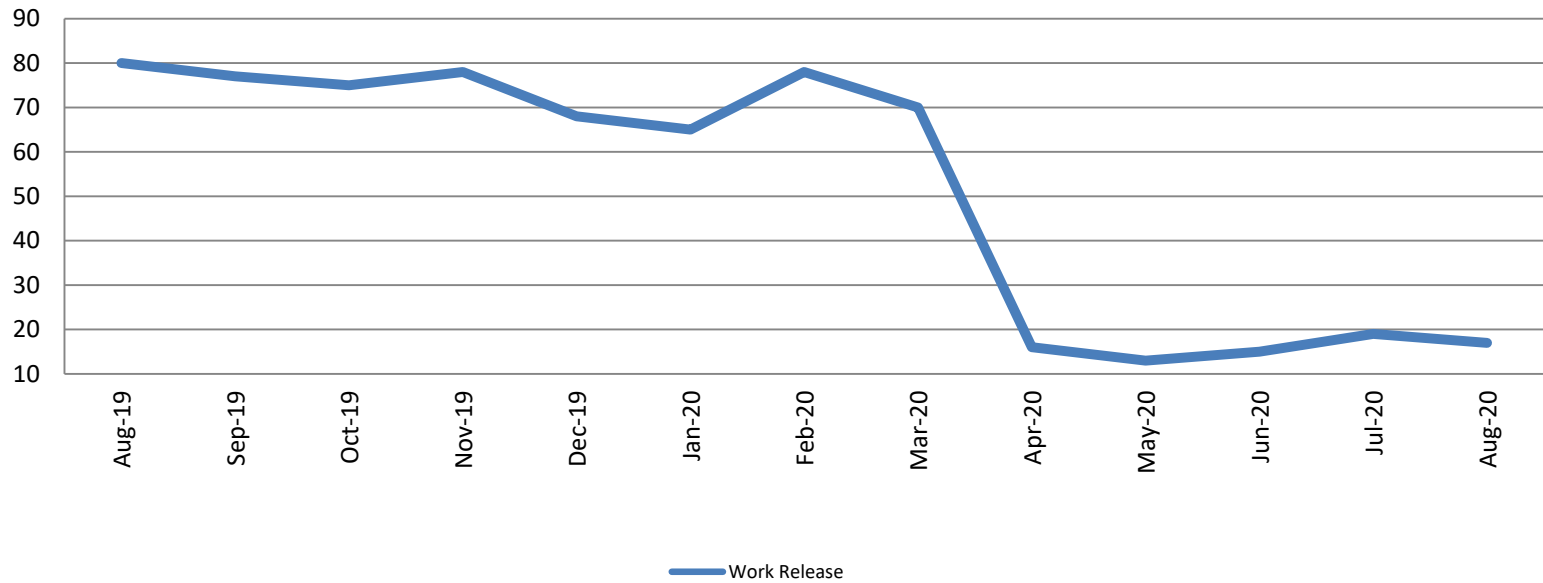


Year	August	August YTD Avg.
2018	62	57
2019	70	65
2020	30	39



# Community Corrections

## Work Release: ADP August 2019 - present

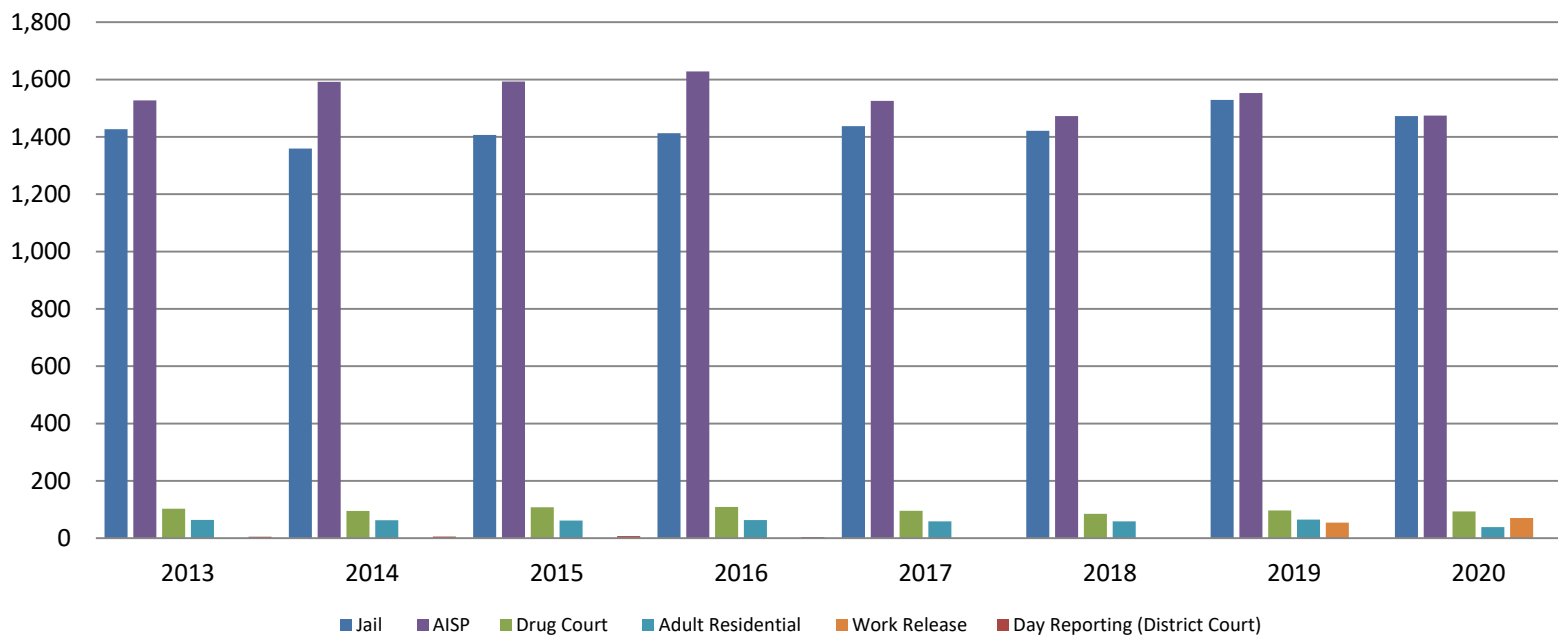


Month Year	Total	YTD Avg.
August 2019	78	67
August 2020	19	39



# Correlation: Total & Sedgwick County Programs (Adult)

## Total Annual ADP 2013 - present

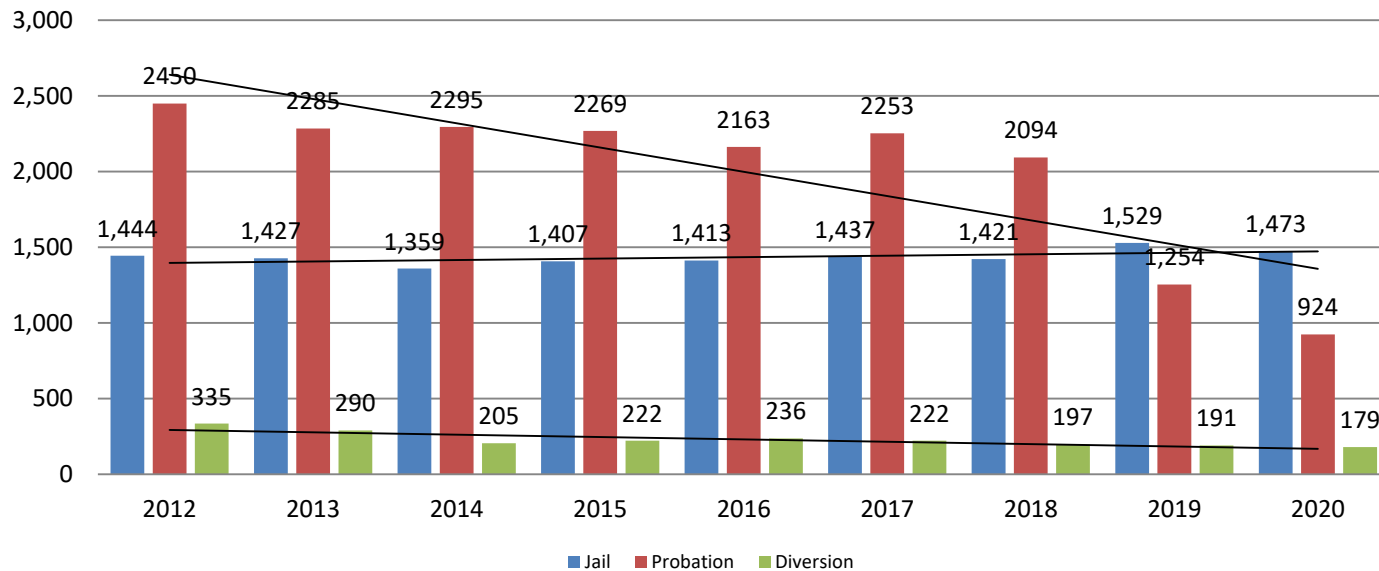


	2018	2019	2020
Jail	1,421	1,529	1,465
AISP	1,472	1,553	1,474
Drug Court	85	97	94
Adult Residential	59	65	39
Work Release	55	71	37
Day Reporting (DC)	0	0	0



# Correlation: Total & District Court Programs

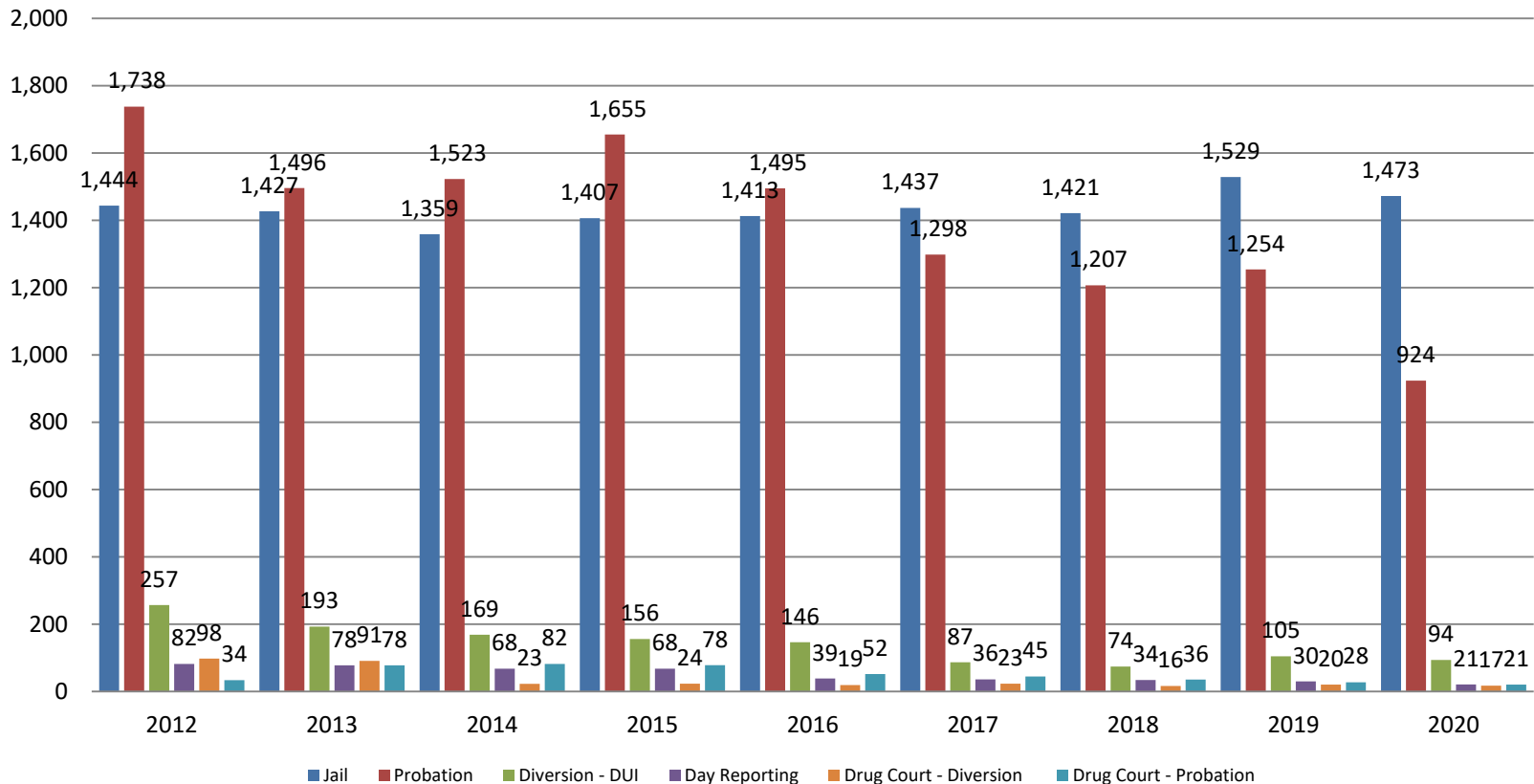
## Total Annual ADP: 2012 - present



Jail includes individuals in booking, detention, work release and out-of county (combined)  
 (data obtained from detention facility, DA's Office, & District Court)

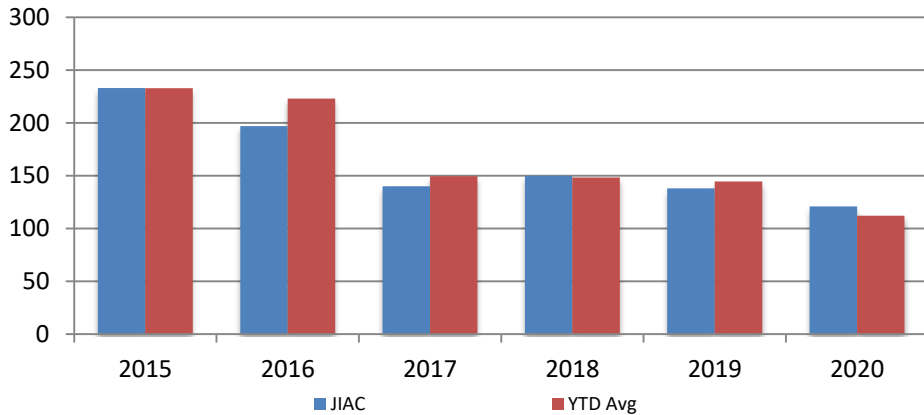
# Correlation: Total & City of Wichita / Municipal Court Programs

**Total Annual ADP: 2012 - present**



# Juvenile

**Jiac Intakes  
August 2015 - present**

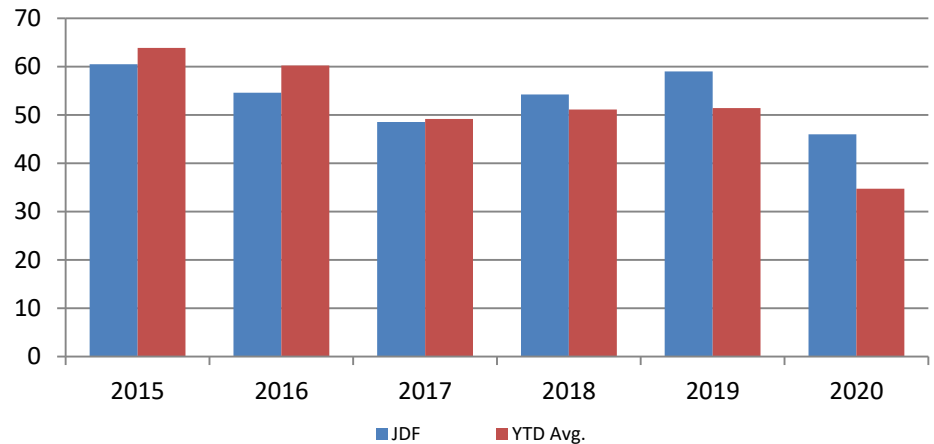


Year	August	August YTD Avg.
2015	233	233
2016	197	223
2017	140	150
2018	150	148
2019	138	145
2020	121	112

**Year August August YTD Avg.**

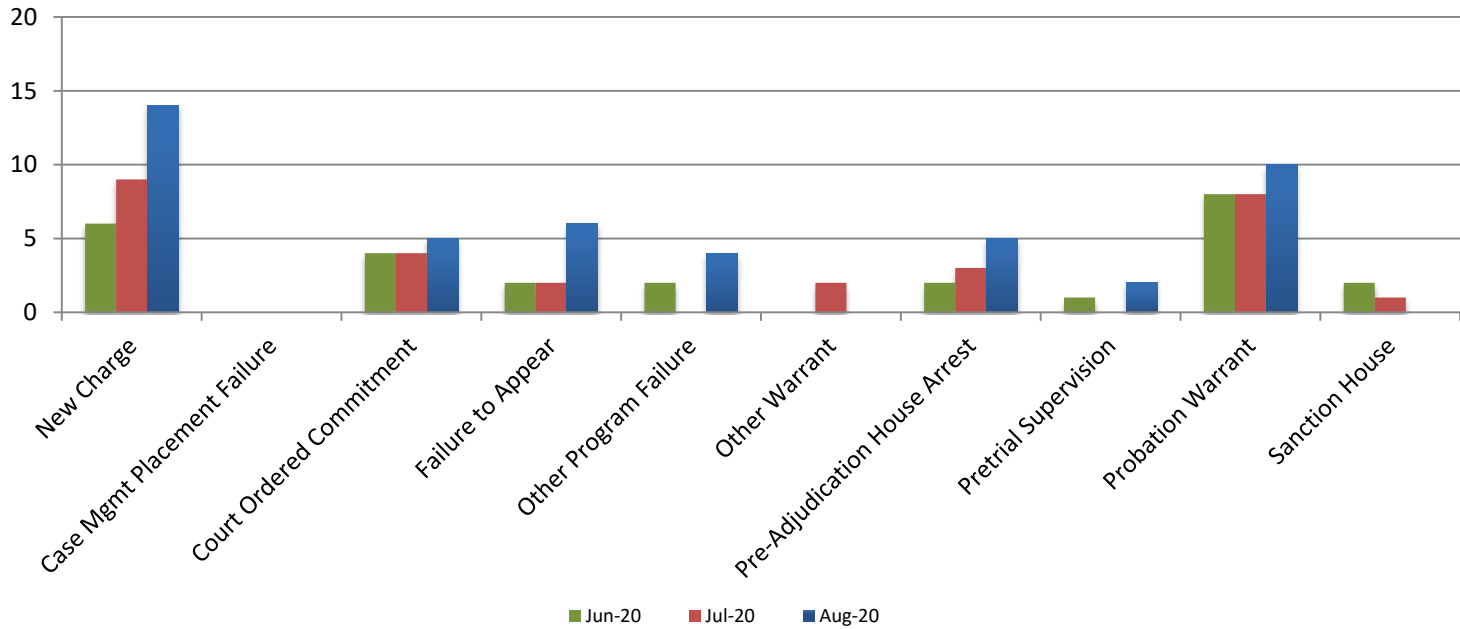
2015	60	63
2016	55	60
2017	49	49
2018	54	52
2019	59	52
2020	46	36

**JDF ADP  
August 2015 - present**





# Reason for JDF Admits



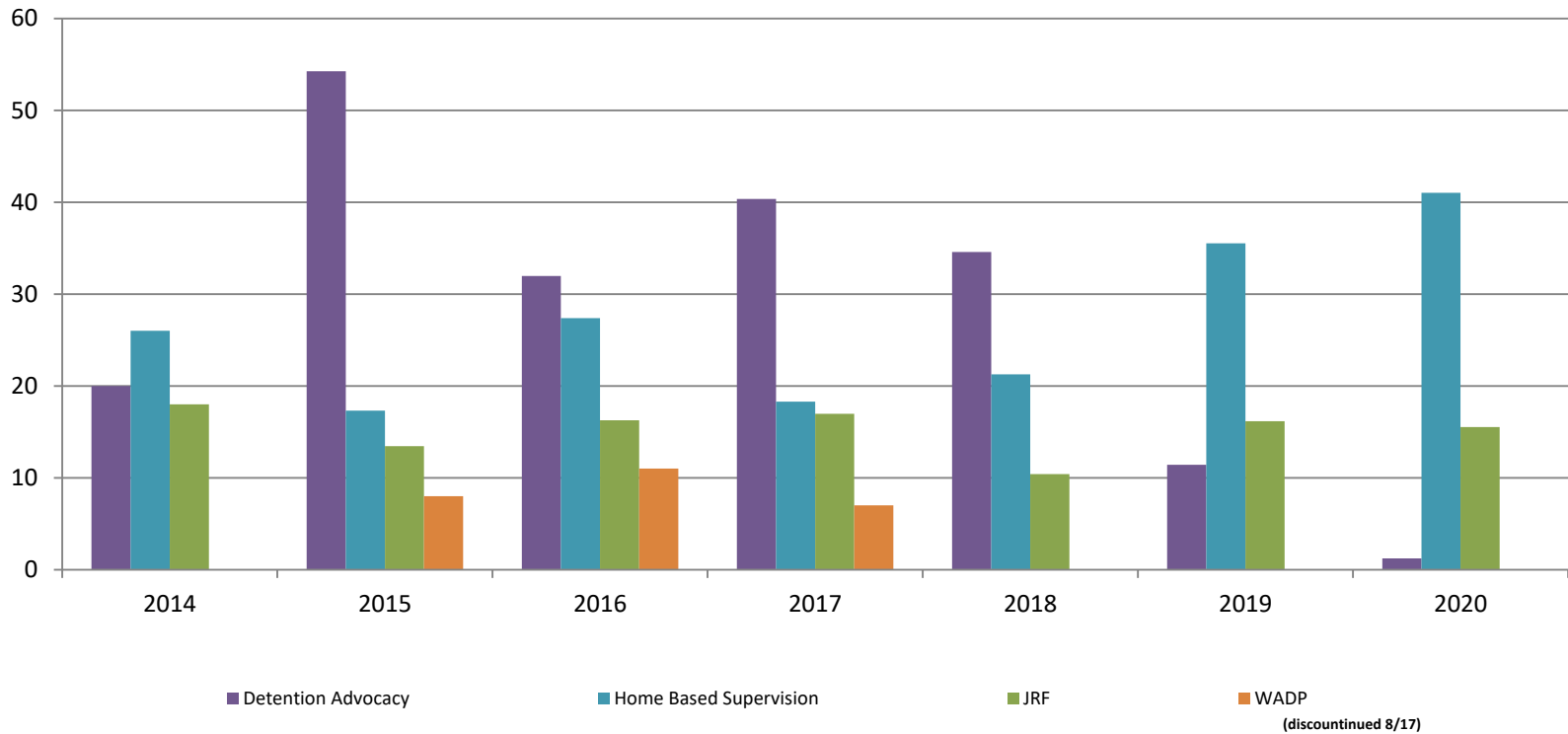
## Reason for JDF Admits

Reason	August 2019	August 2020
New Charges	18	14
Case Management Placement Failures	0	0
Court Ordered Commitment	6	5
Failure to Appear	4	6
Other Program Failure	8	4
Other Warrant	2	0
Pre-Adjudication House Arrest	1	5
Pretrial Supervision	0	2
Probation Warrant	16	10
Sanction House	3	0



# Juvenile Detention Alternatives

## ADP: August 2014 - present



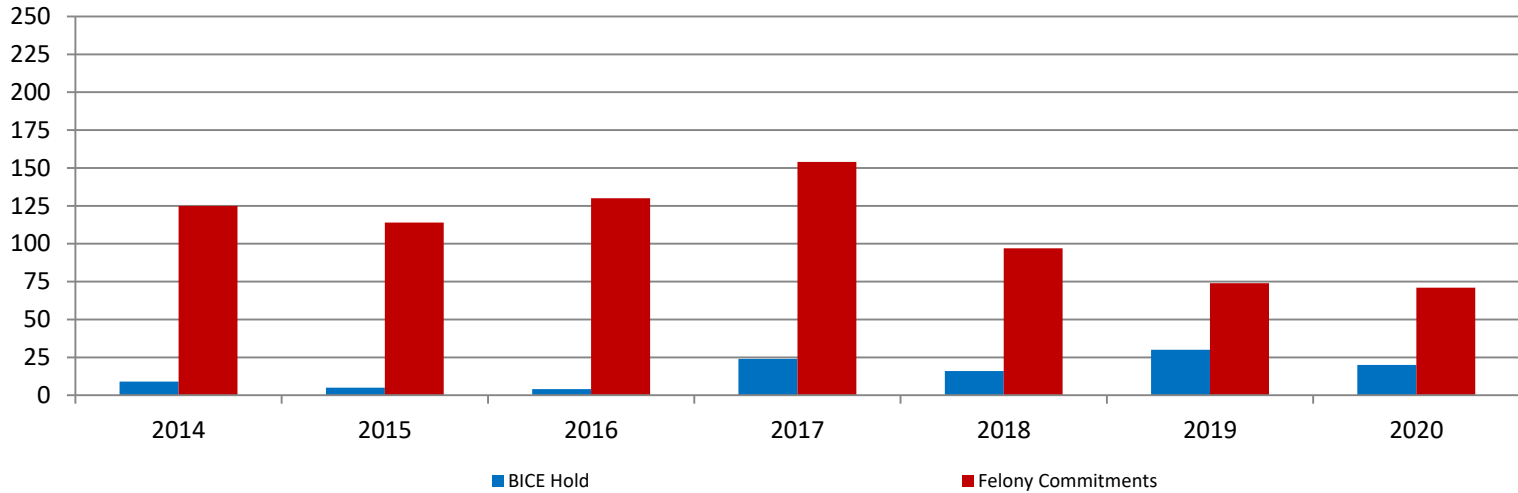
# Juvenile Detention Services

<b>August ADP</b>	<b>2017</b>	<b>2018</b>	<b>2019</b>	<b>2020</b>
Juvenile Detention Facility	55	56	47	29
Juvenile Residential Facility	17	10	16	16
Home Based Supervision	18	21	36	41
Detention Advocacy Case Management Services	36	33	7	4
Weekend Alternative Detention Program (total)	7	0	N/A	N/A

<b>August YTD AVERAGE</b>	<b>2017</b>	<b>2018</b>	<b>2019</b>	<b>2020</b>
Juvenile Detention Facility	49	51	51	35
Juvenile Residential Facility	15	12	14	17
Home Based Supervision	22	26	28	29
Detention Advocacy Case Management Services	35	32	24	12
Weekend Alternative Detention Program	15	0	N/A	N/A

# Monthly Jail Snapshot: June 30, 2020

Snapshots August 2014 - present



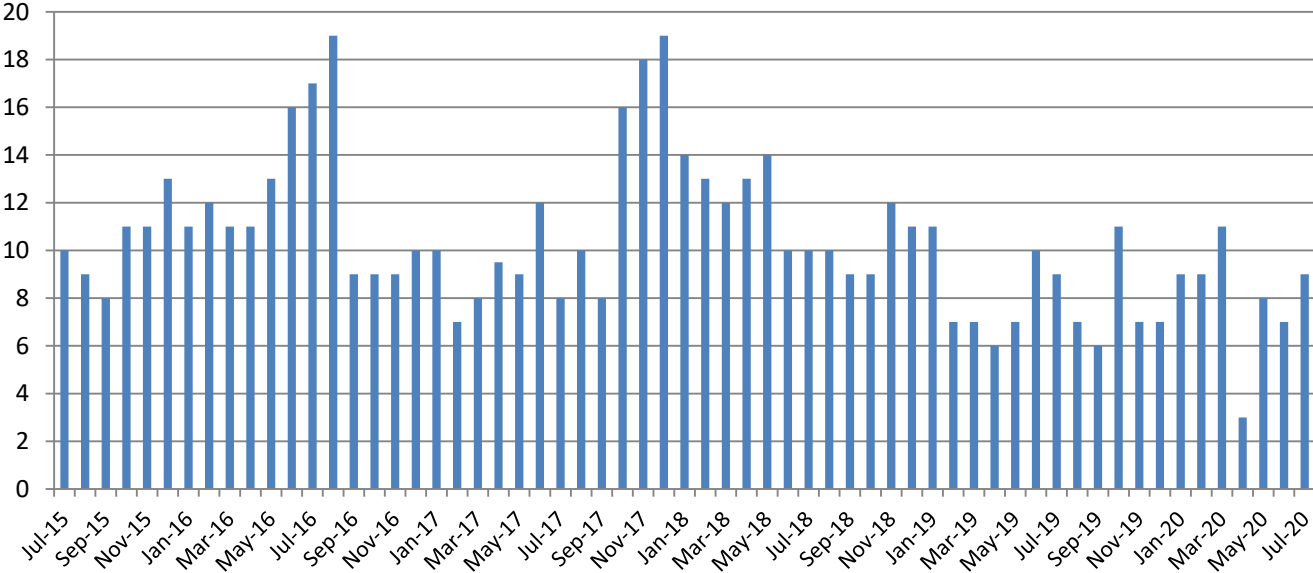
BICE Hold	2014	2015	2016	2017	2018	2019	2020
<b>August</b>	9	5	4	24	16	30	20

Felony Commitments	2014	2015	2016	2017	2018	2019	2020
<b>August</b>	125	114	130	154	97	74	71



## Journal Entry Completion (Average Days) July 2015 - present



July	2015	2016	2017	2018	2019	2020
Avg. Days	9	19	10	10	7	9
YTD Avg.	9	14	9	12	8	8