

Criminal Justice Coordinating Council

Population Report & Program Trends

May 2021

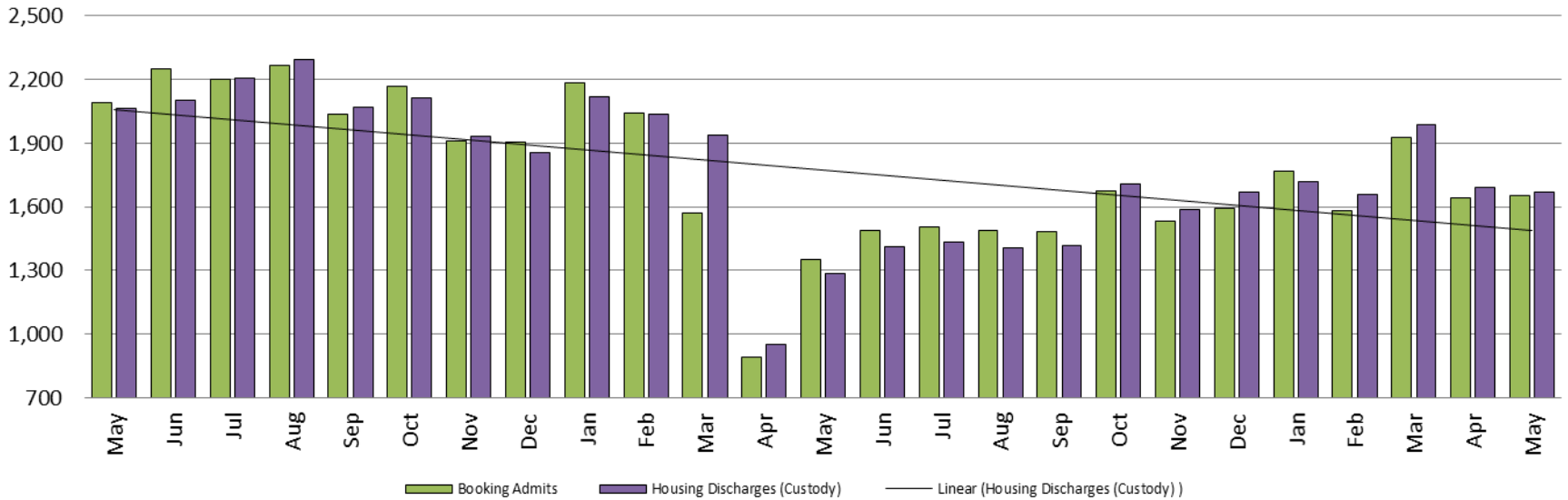


Sedgwick County...
working for you

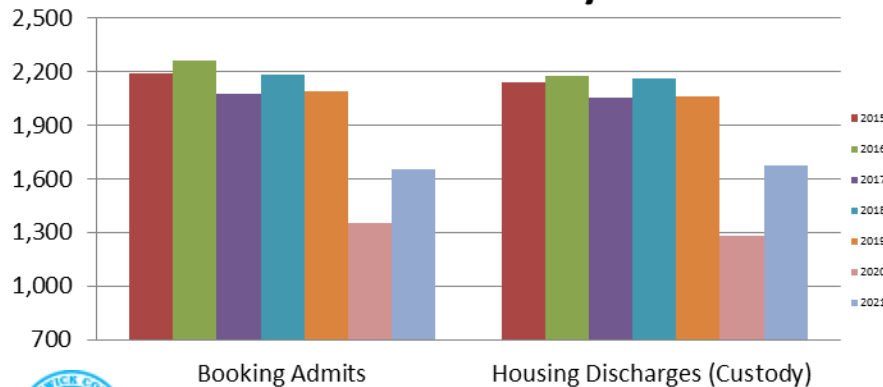
Detention Facility

Booking Admits & Housing Discharges from Custody

May 2019 - present

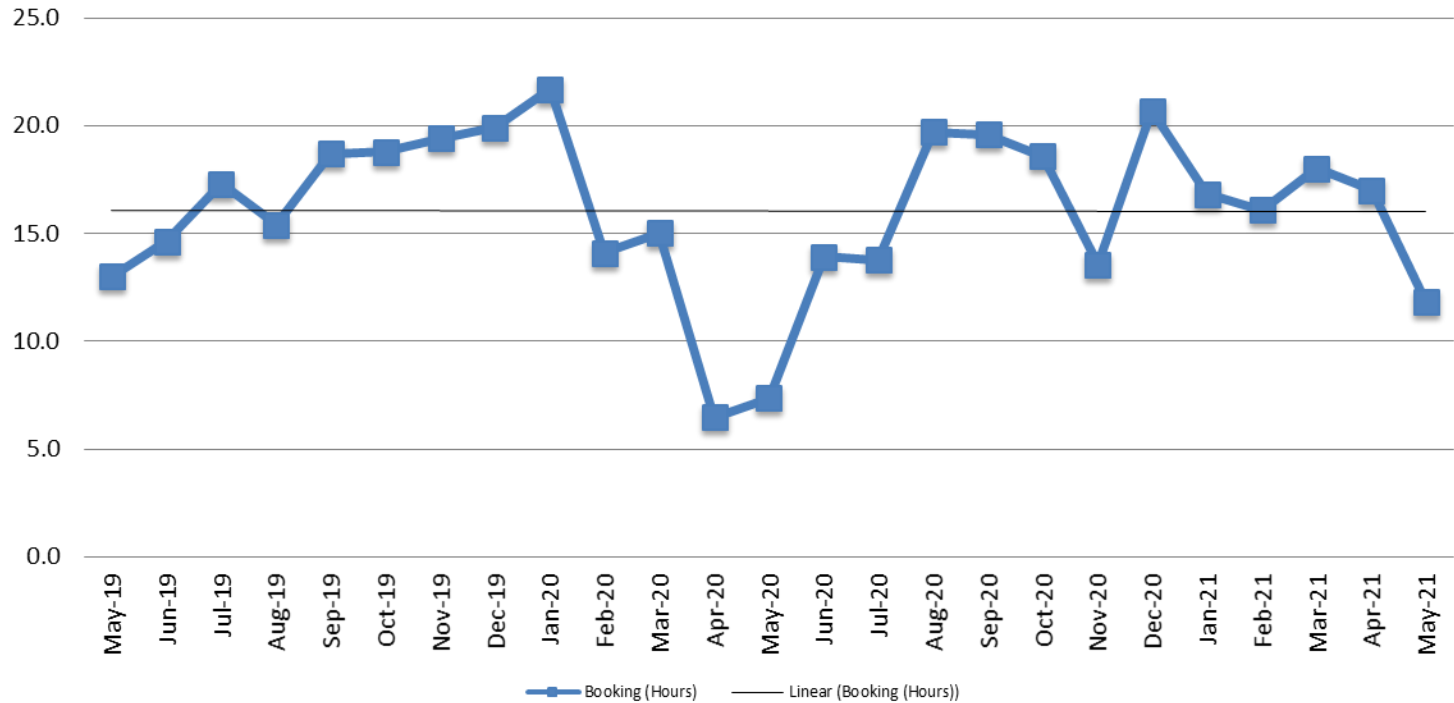


Bookings Year over Year: Month of May



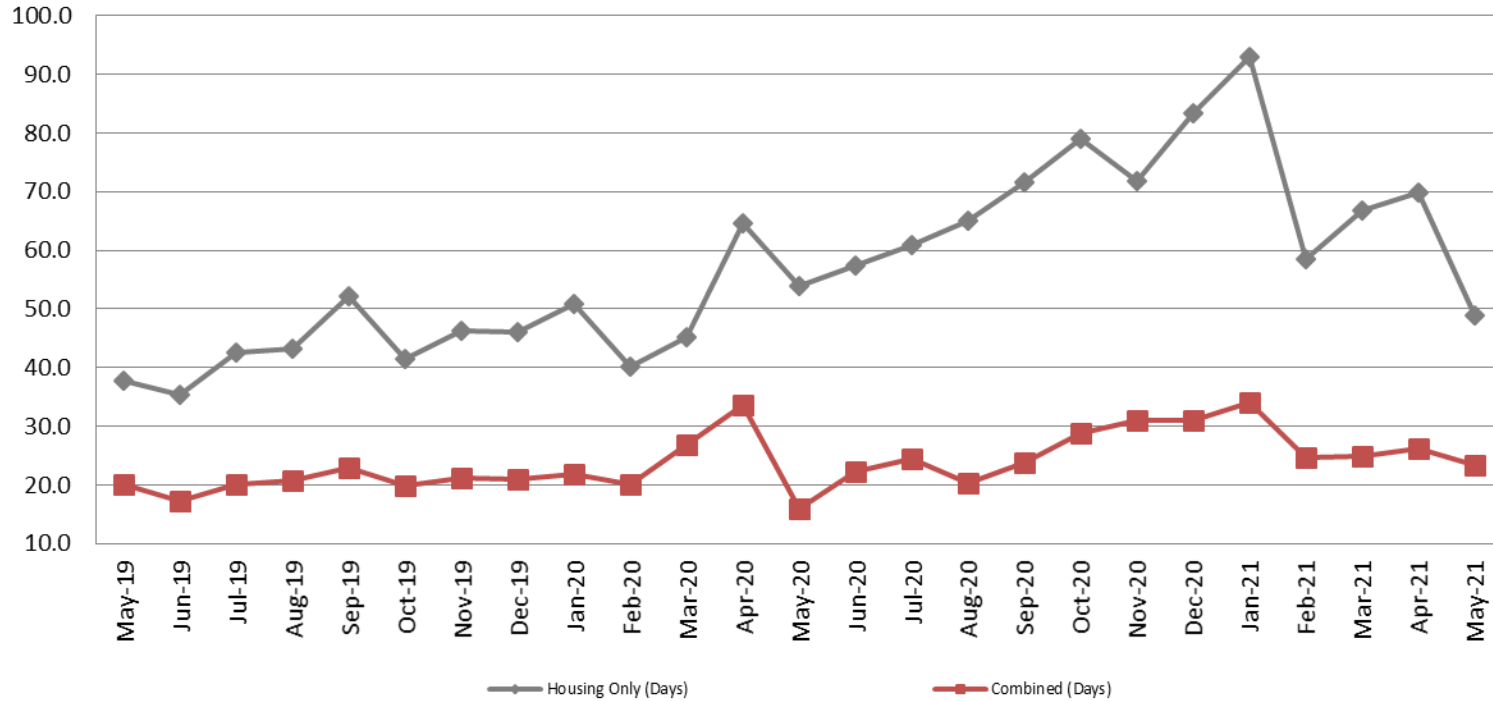
Bookings May	Housing Discharges May
2019: 2,092	2019: 2,062
2020: 1,349	2020: 1,283
2021: 1,654	2021: 1,672

Average Length of Stay: Booking (Hours) May 2019 - present



May	May YTD Average
2019: 13.0	2019: 12.4
2020: 7.4	2020: 12.9
2021: 11.85	2021: 16.0

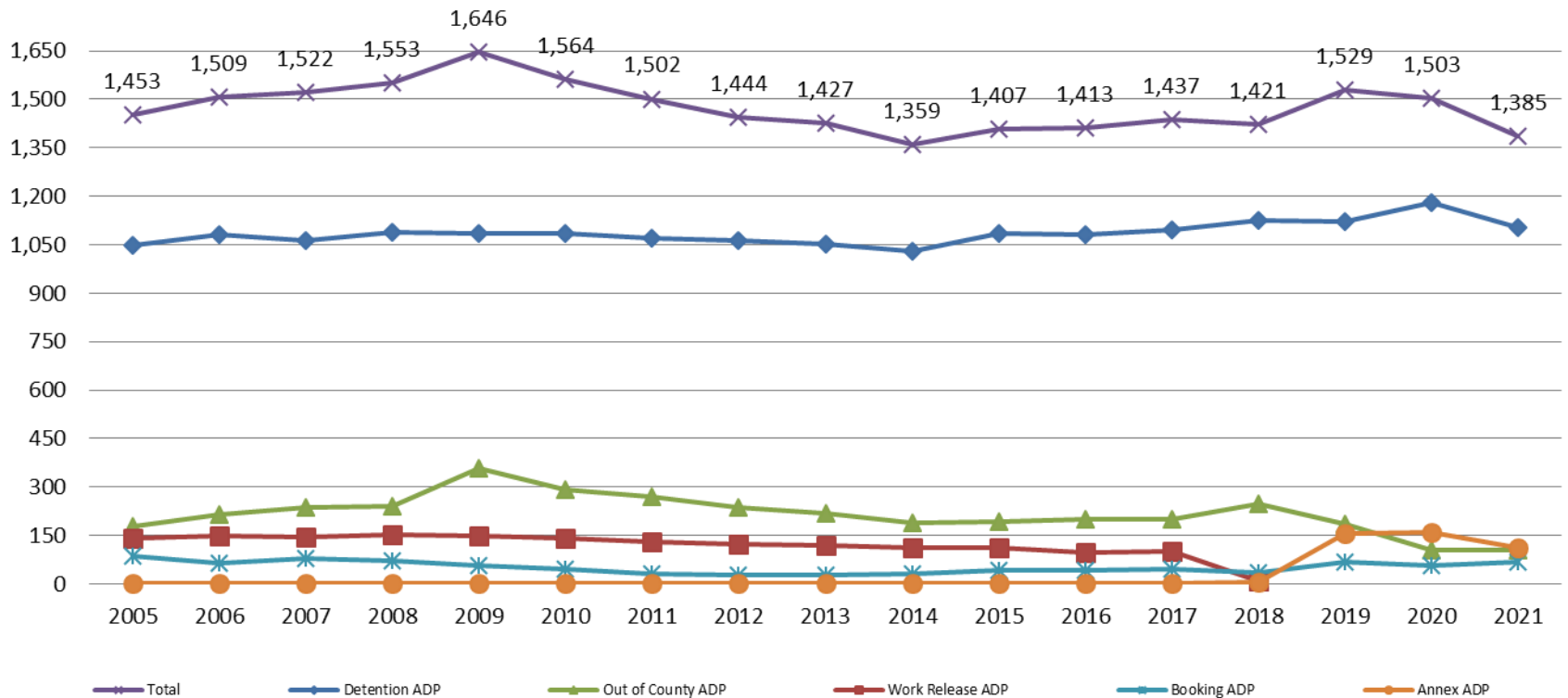
Average Length of Stay: Housing & Combined (Days) May 2019 - present



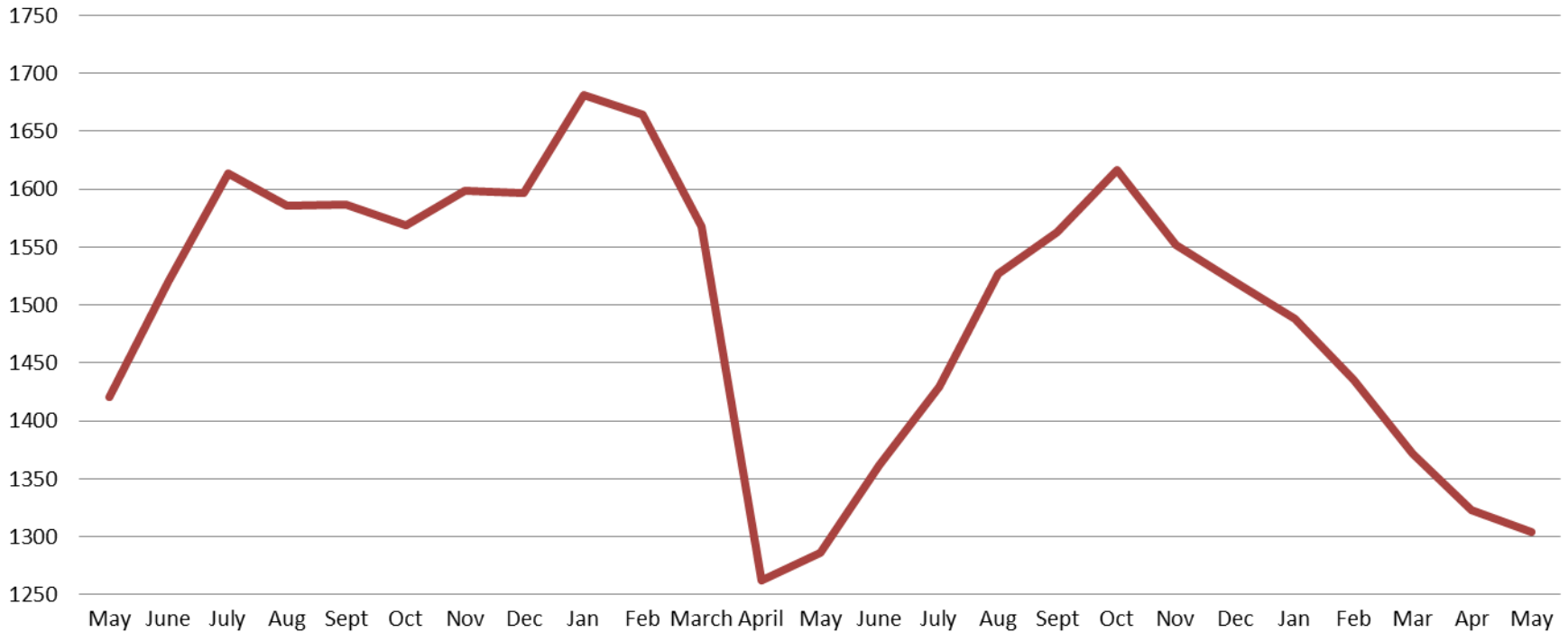
Month Year	Housing Only	Housing YTD AVG	Combined Days	Combined YTD AVG
May 2019	37.8	39.4	20.2	21.0
May 2020	54.0	51.0	15.9	23.6
May 2021	49.0	67.4	23.3	26.6

Jail: Annual Average Daily Population (ADP)

TRENDS: Booking, Detention, Work Release, & Out of County Annual ADP: 2005 - present

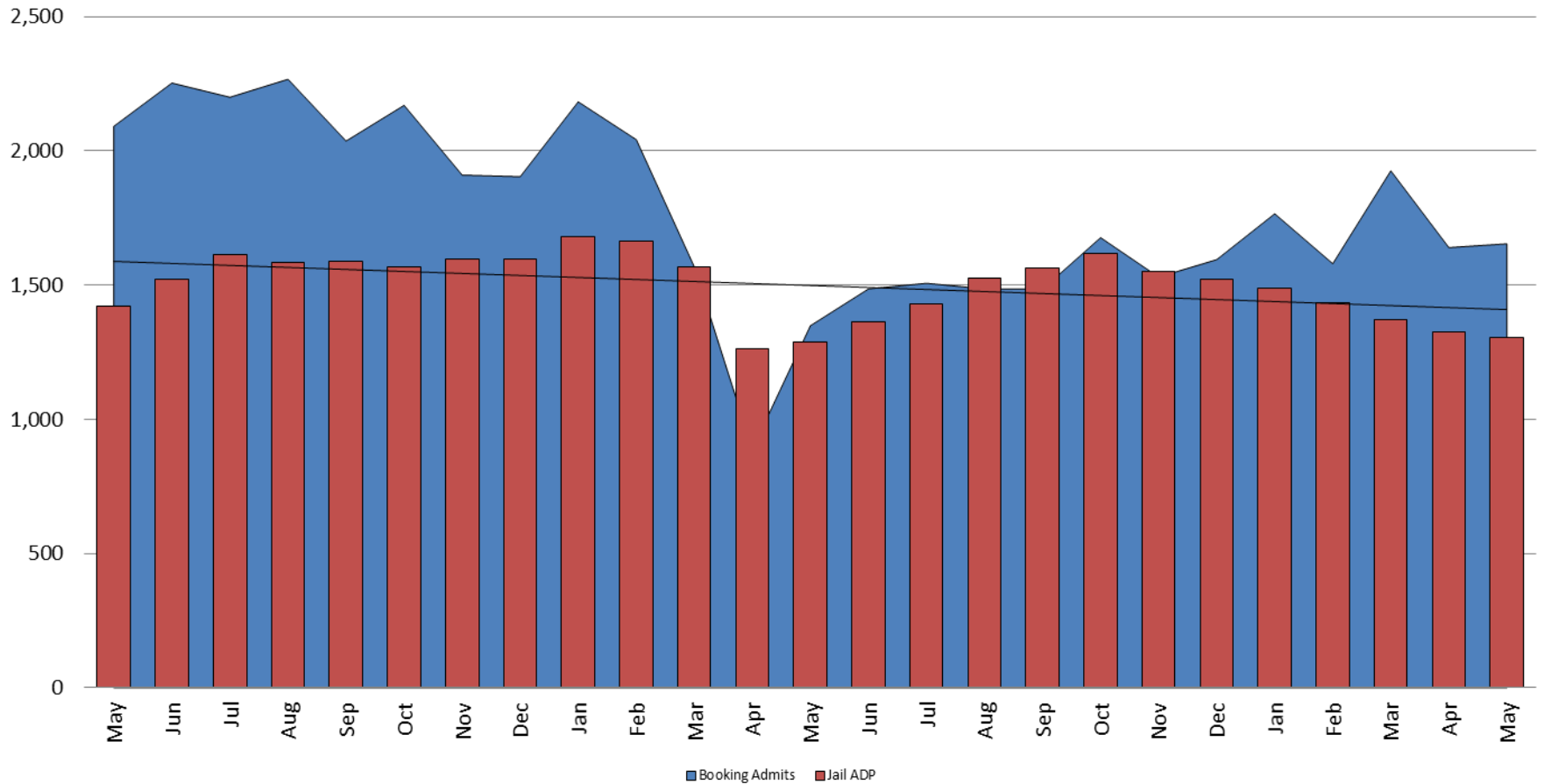


TOTAL MONTHLY ADP: JAIL (Booking, Detention Facility, Annex, & Out of County) May 2019 - present

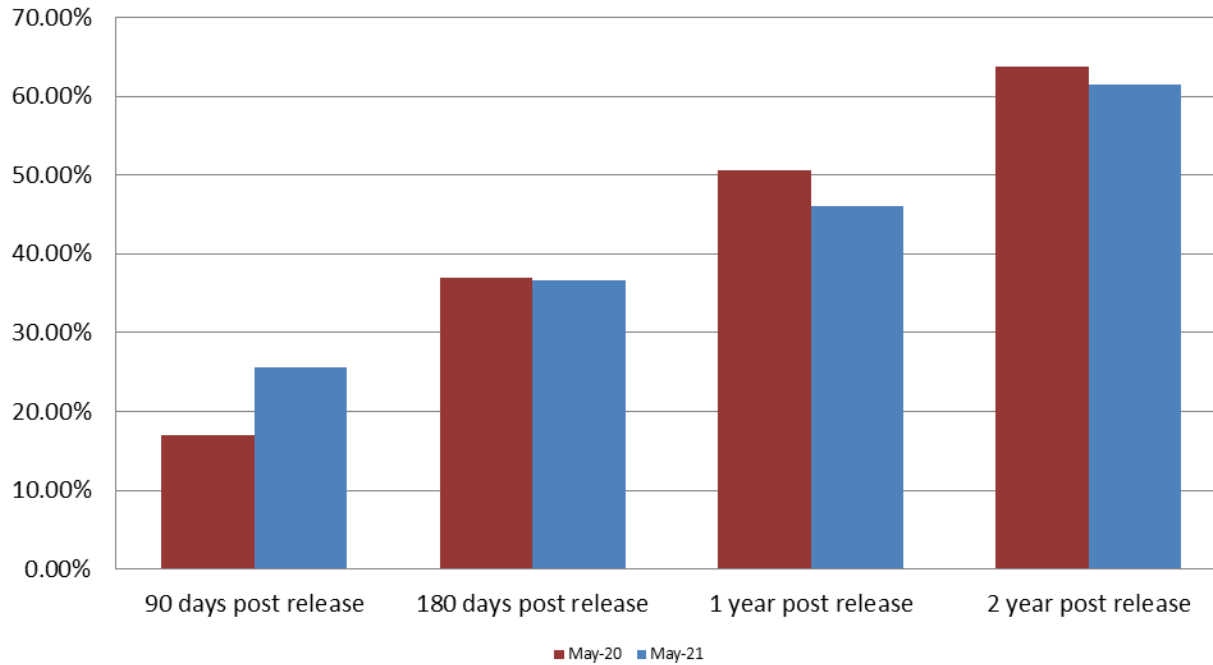


May 2019	May 2020	May 2021
1,421	1,286	1,304

Booking Admits & Total Monthly ADP (Jail): May 2019 - present



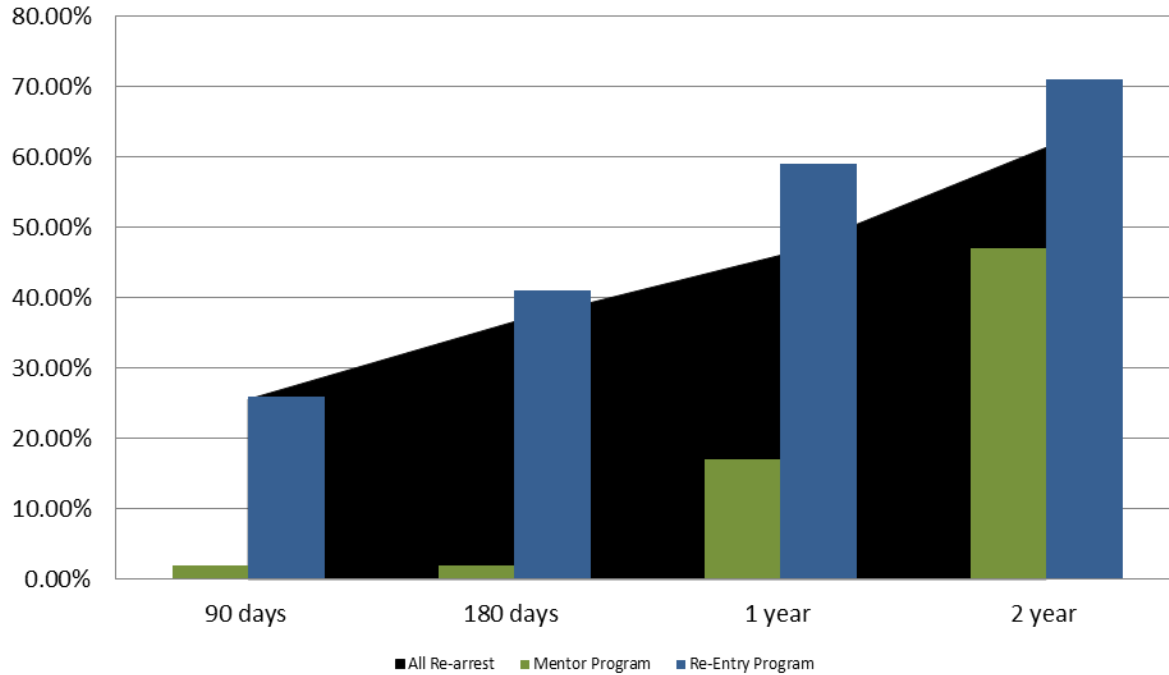
Percent of released inmates rearrested May



Month Year	90 Days	180 Days	1 Year	2 Years
May 2020	16.93%	36.96%	50.65%	63.74%
May 2021	25.59%	36.63%	46.08%	61.40%

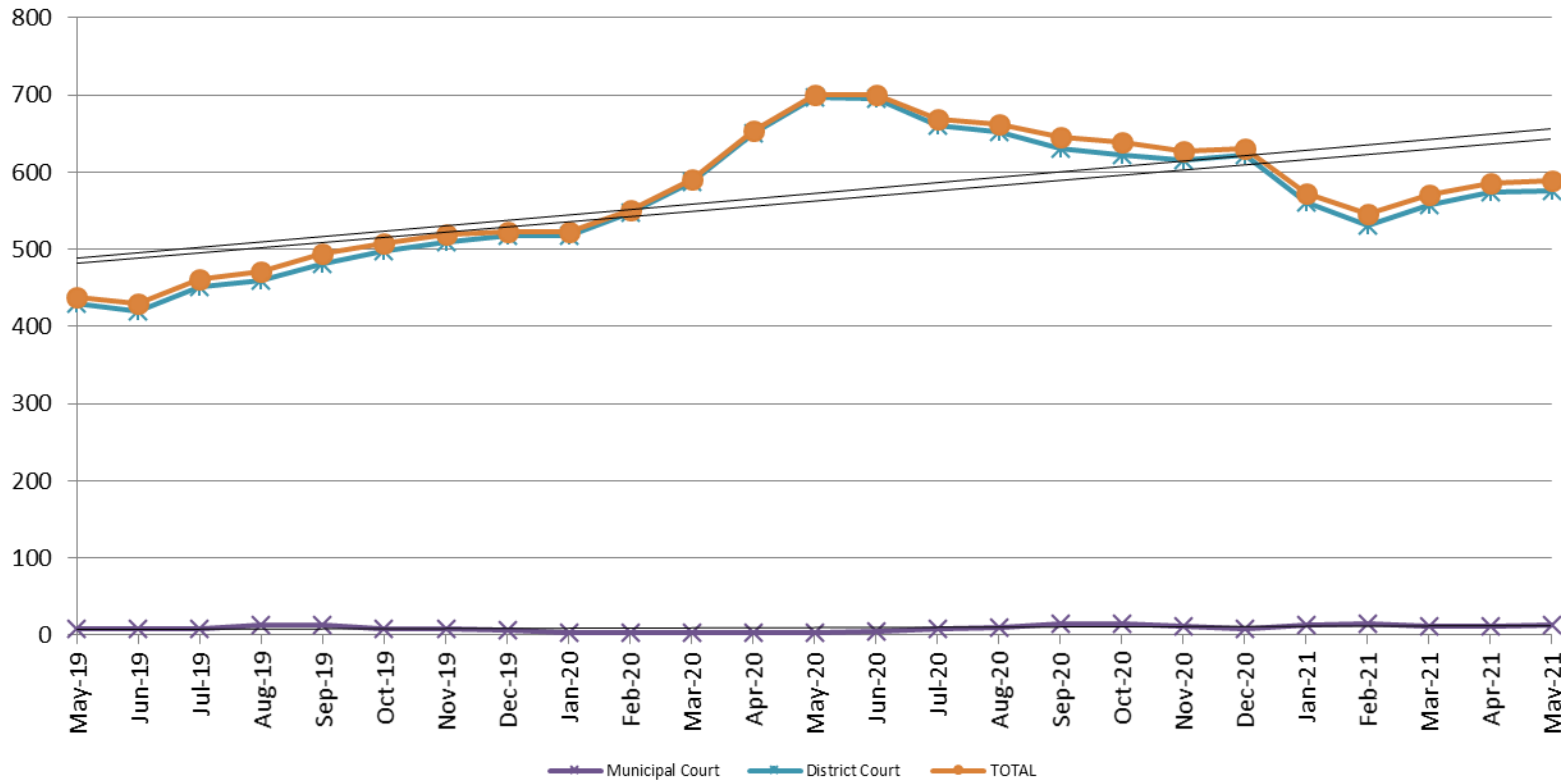


Recidivism by Programs May 2021



May 2021	90 Days	180 Days	1 year	2 years
All Re-arrests	25.59%	36.63%	46.08%	61.40%
Mentor Program	2%	2%	17%	47%
Re-Entry Program	26%	41%	59%	71%

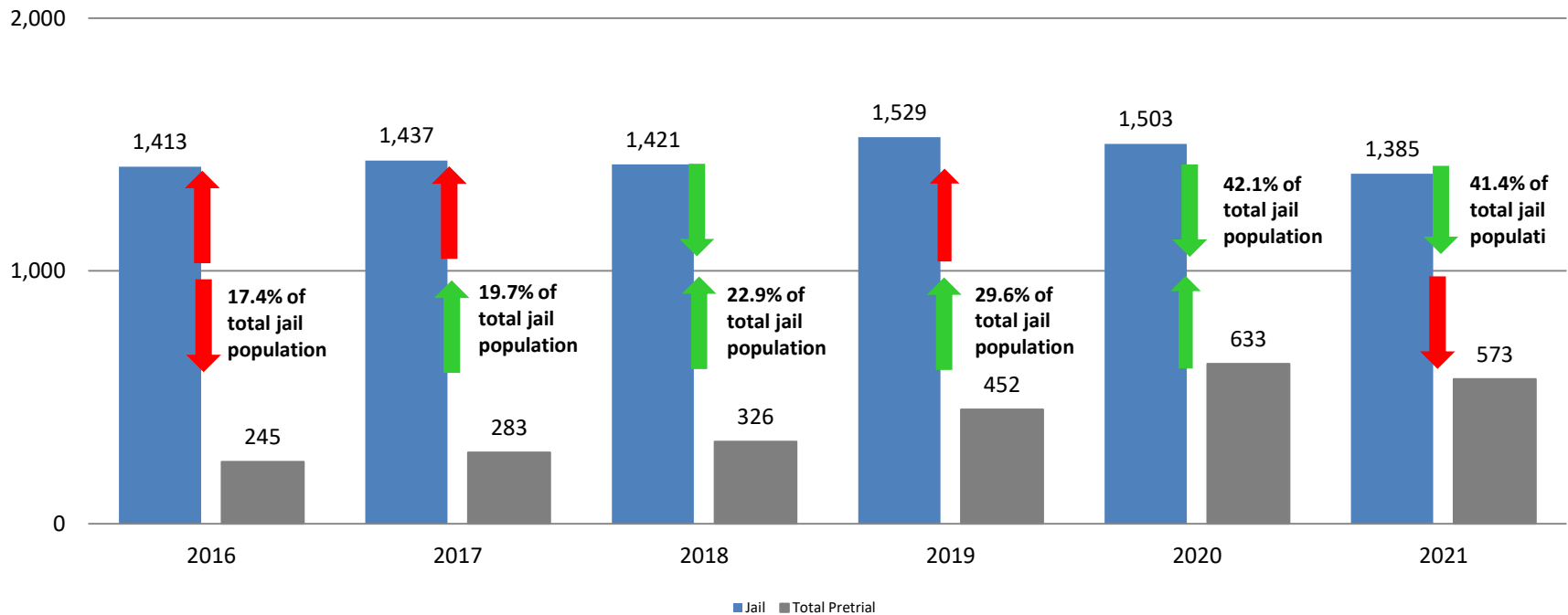
Pretrial Services Program (PSP) Monthly ADP: May 2019 - present



May	2019 ADP	2020 ADP	2021 ADP	2019 YTD Avg.	2020 YTD Avg.	2021 YTD Avg.
Muni. Court	9	3	14	15	4	13.2
Dist. Court	429	697	575	388	600	559.4
Total	438	700	589	404	604	572.8

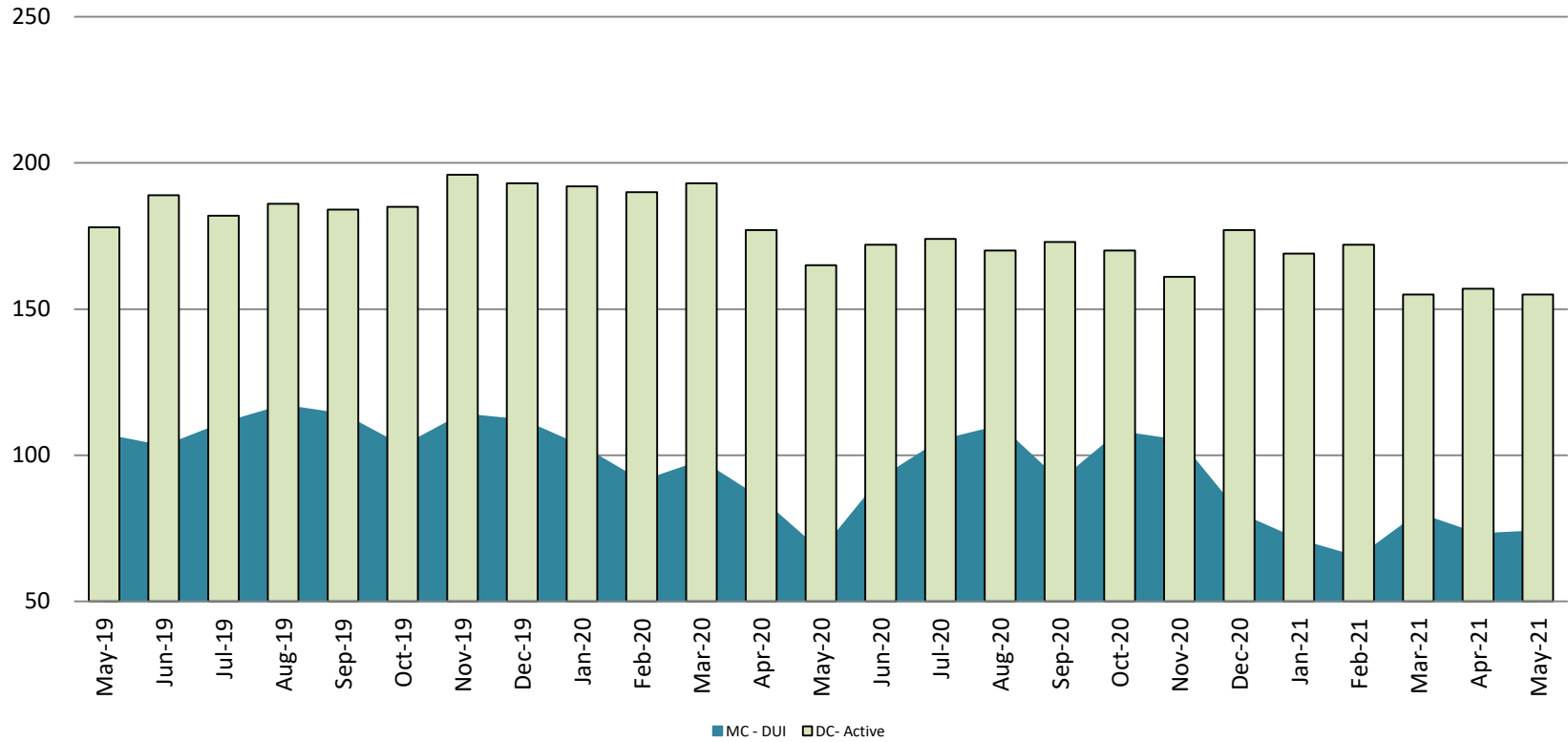
Correlation: Total & PSP

Total Annual ADP: 2016 - present



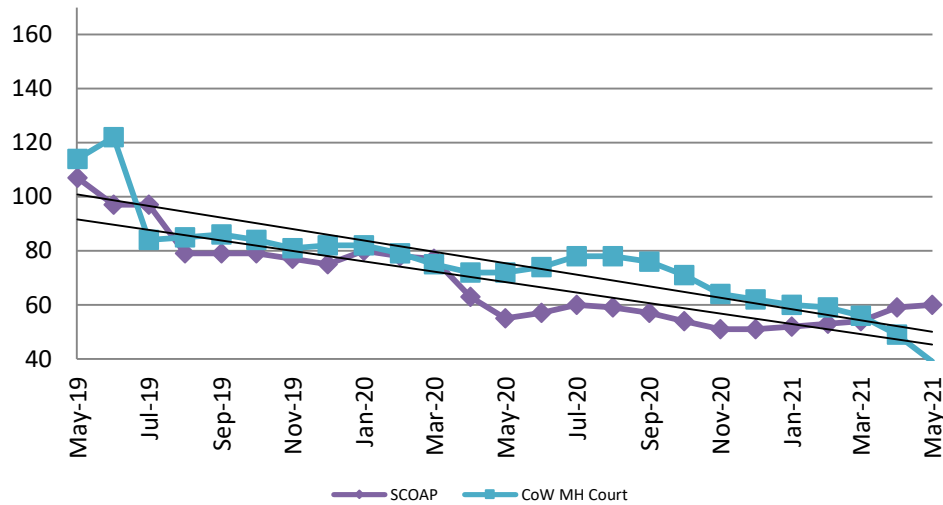
Diversion - Active Caseload

May 2019 - present

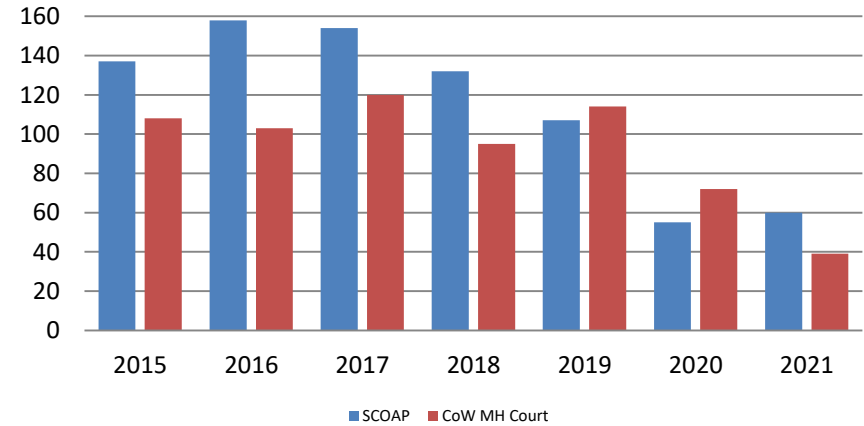


May	2019	2020	2021	2019 YTD Avg.	2020 YTD Avg.	2021 YTD Avg.
Muni. Court- DUI	107	67	74	97	89	73
Dist. Court- Active	178	165	155	194	183	162

Mental Health - ADP May 2019 - present

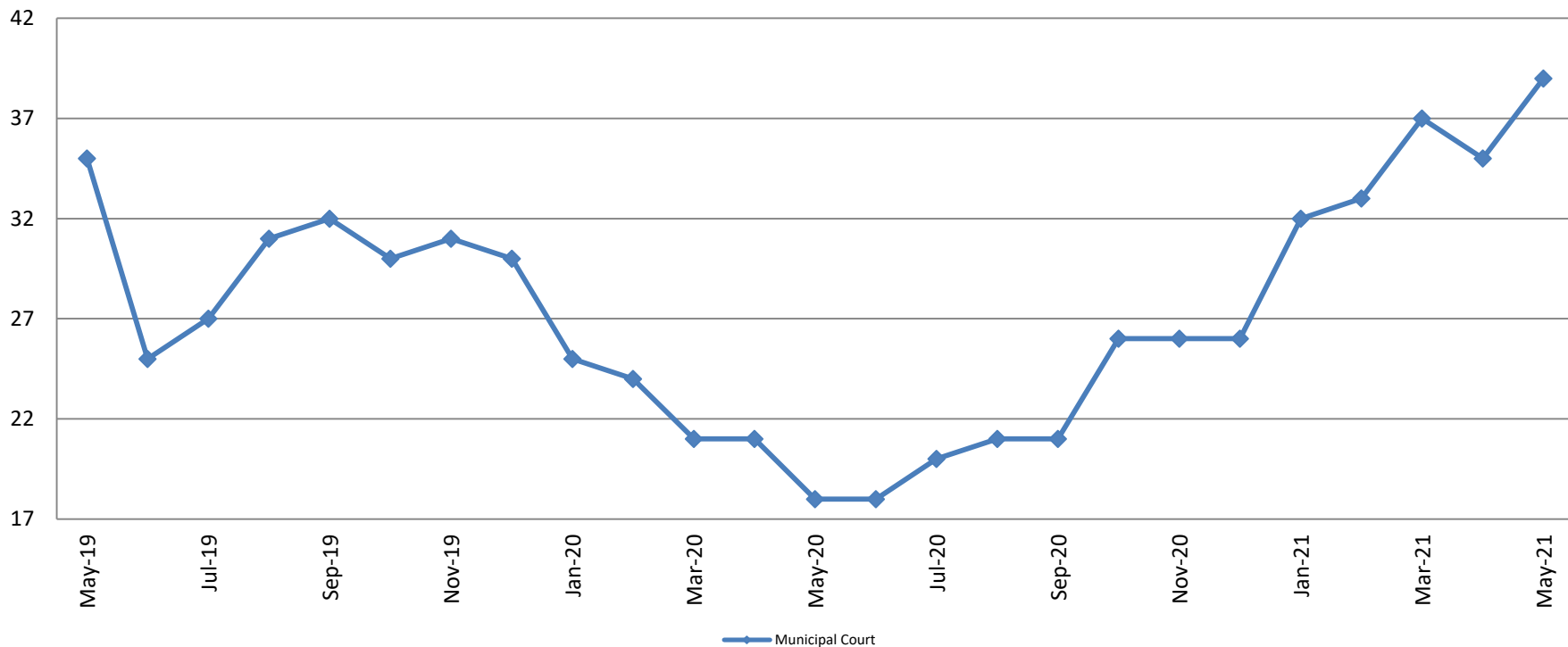


Mental Health ADP Year over Year - May



May	2019 ADP	2020 ADP	2021 ADP	2019 YTD Avg.	2020 YTD Avg.	2021 YTD Avg.
SCOAP	107	55	60	119	71	56
MH Court	114	72	39	100	76	53

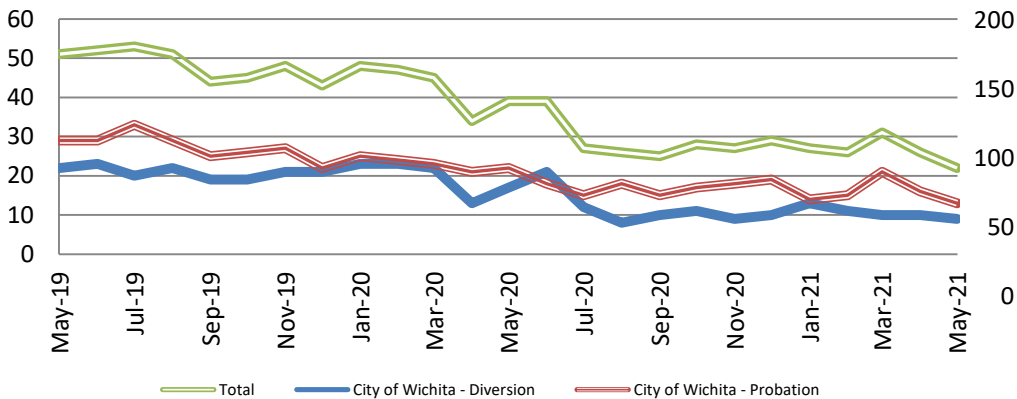
Day Reporting - Active Caseload May 2019 - present



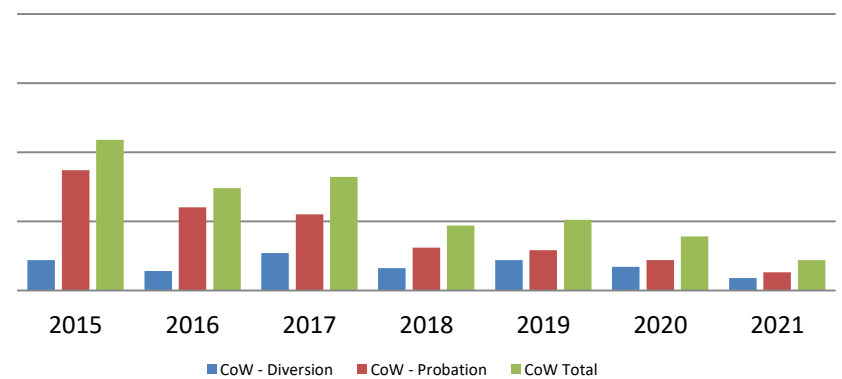
May	2016	2017	2018	2019	2020	2021
Muni. Court	48	31	36	35	18	39
Muni. Court YTD Avg.	48	33	38	32	22	35



Drug Court - City of Wichita ADP: May 2019 - present



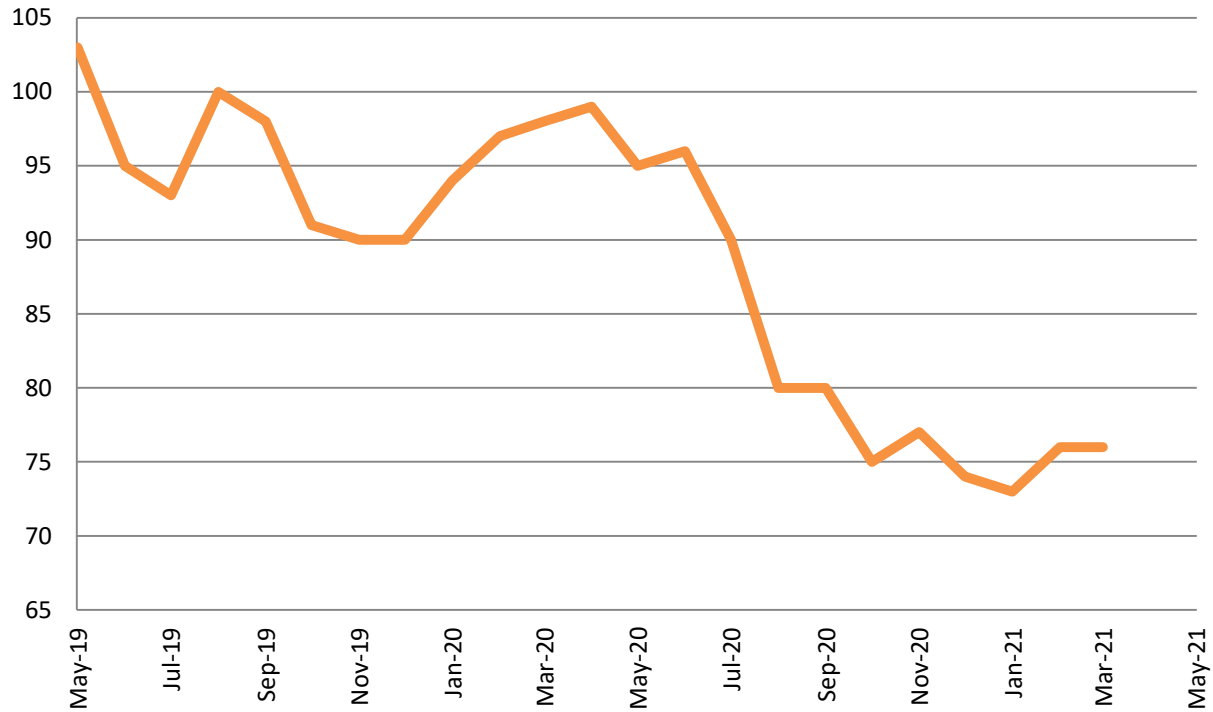
Drug Court- City of Wichita Year over Year - May



May	2019	2020	2021
Diversion	22	17	9
Probation	29	22	13
Total	51	39	22

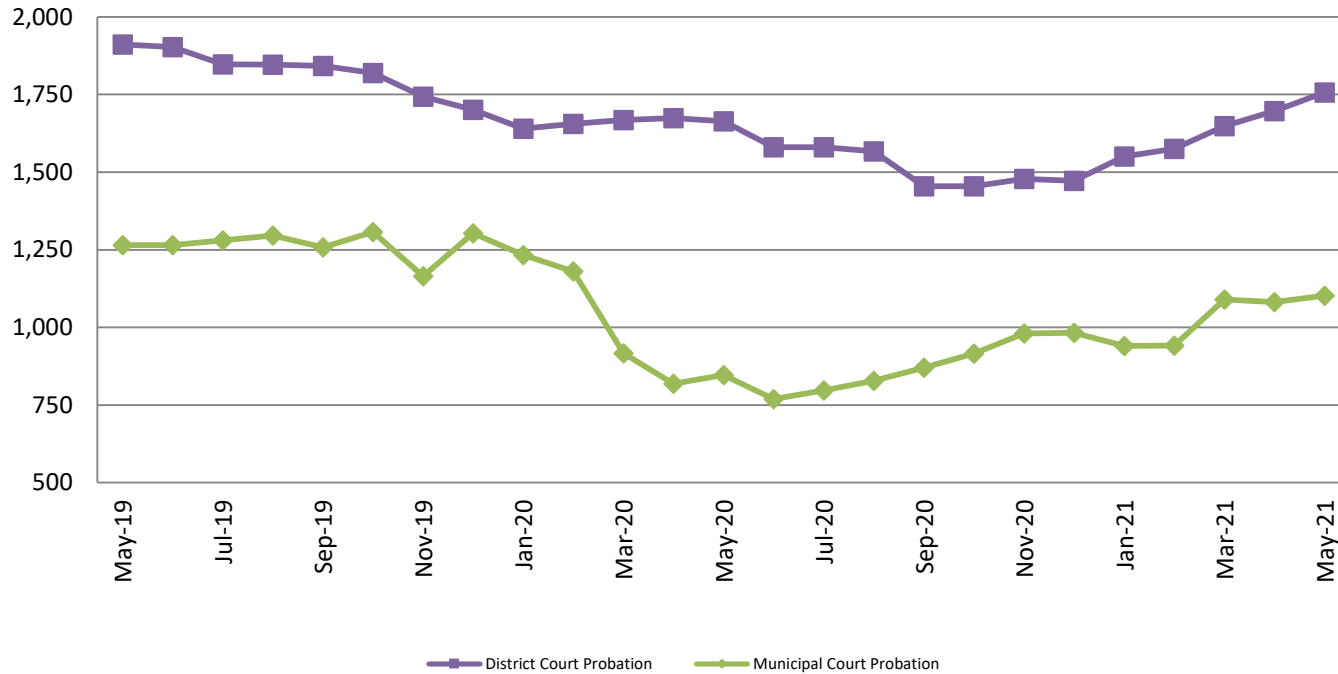


Drug Court - Sedgwick County ADP: May 2019 - present



	May	2019	2020	2021
Sedg. Co. ADP		103	95	Missing
YTD Avg.		101	97	Missing

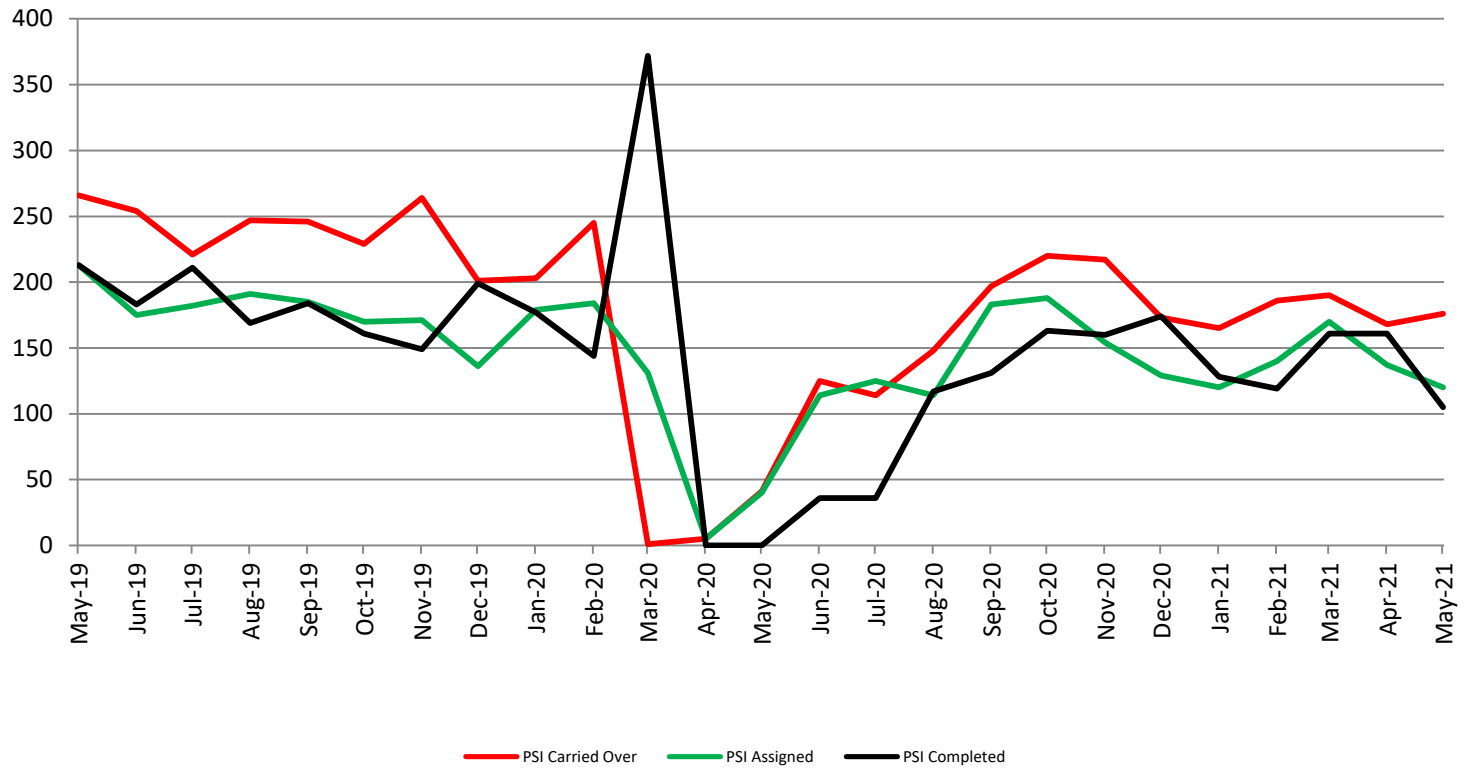
Probation - Active Caseloads May 2019 - present



May	2019	2020	2021	2019 YTD Avg.	2020 YTD Avg.	2021 YTD Avg.
Dist. Court Probation	1,911	1,664	1,757	1,949	1,660	1,646
Muni. Court Probation	1,265	846	1,102	1,235	999	1,031



District Court Probation: Pre-Sentence Investigation May 2019 - present

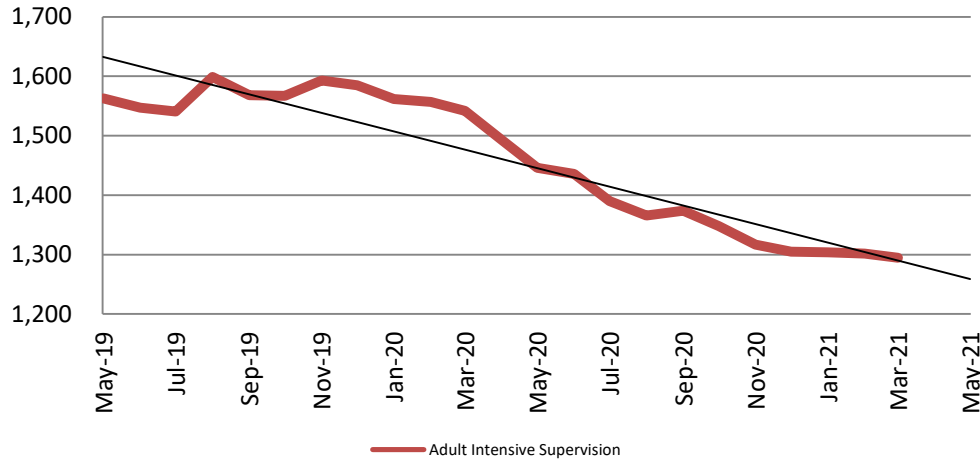


May	2019	2020	2021
Carried Over	266	41	176
Assigned	213	40	120
Completed	213	0	105



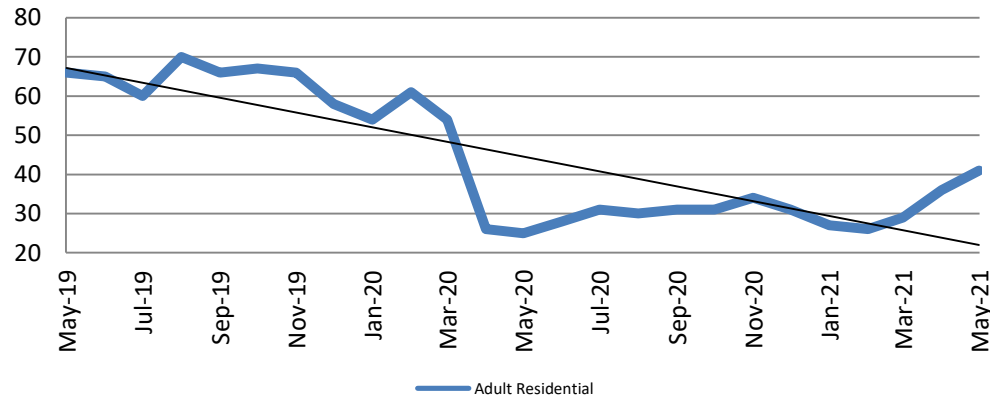
Community Corrections

**Adult Intensive Supervision Probation (AISP):
ADP May 2019 - present**



Year	May	May YTD Avg.
2019	1,563	1,526
2020	1,446	1,520
2021	Missing	Missing

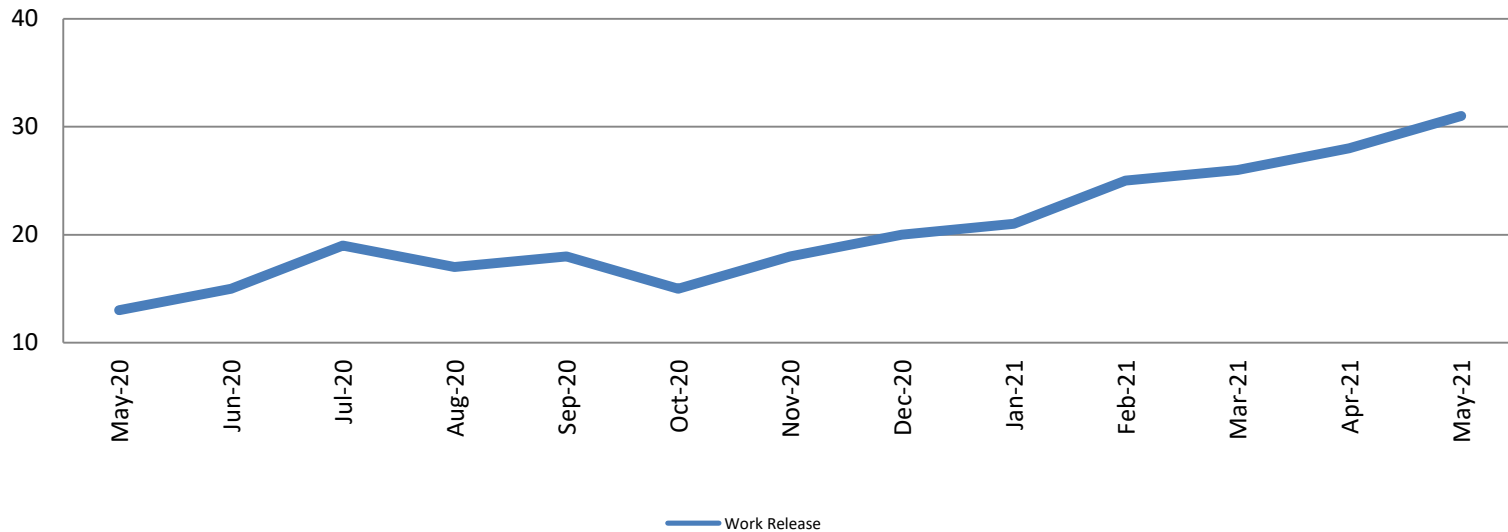
**Adult Residential: ADP
May 2019 - present**



Year	May	May YTD Avg.
2019	66	65
2020	25	44
2021	41	32

Community Corrections

**Work Release: ADP
May 2020 - present**

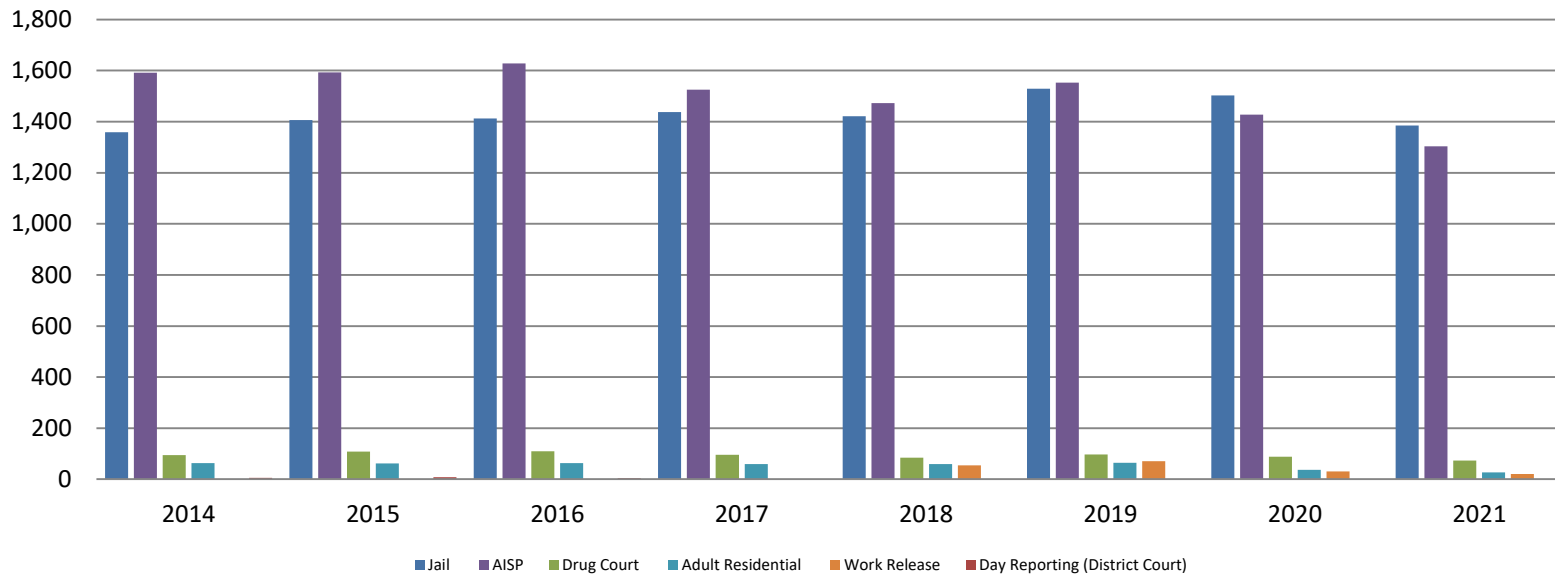


Month Year	Total	YTD Avg.
May 2020	13	48
May 2021	31	26



Correlation: Total & Sedgwick County Programs (Adult)

Total Annual ADP 2014 - present

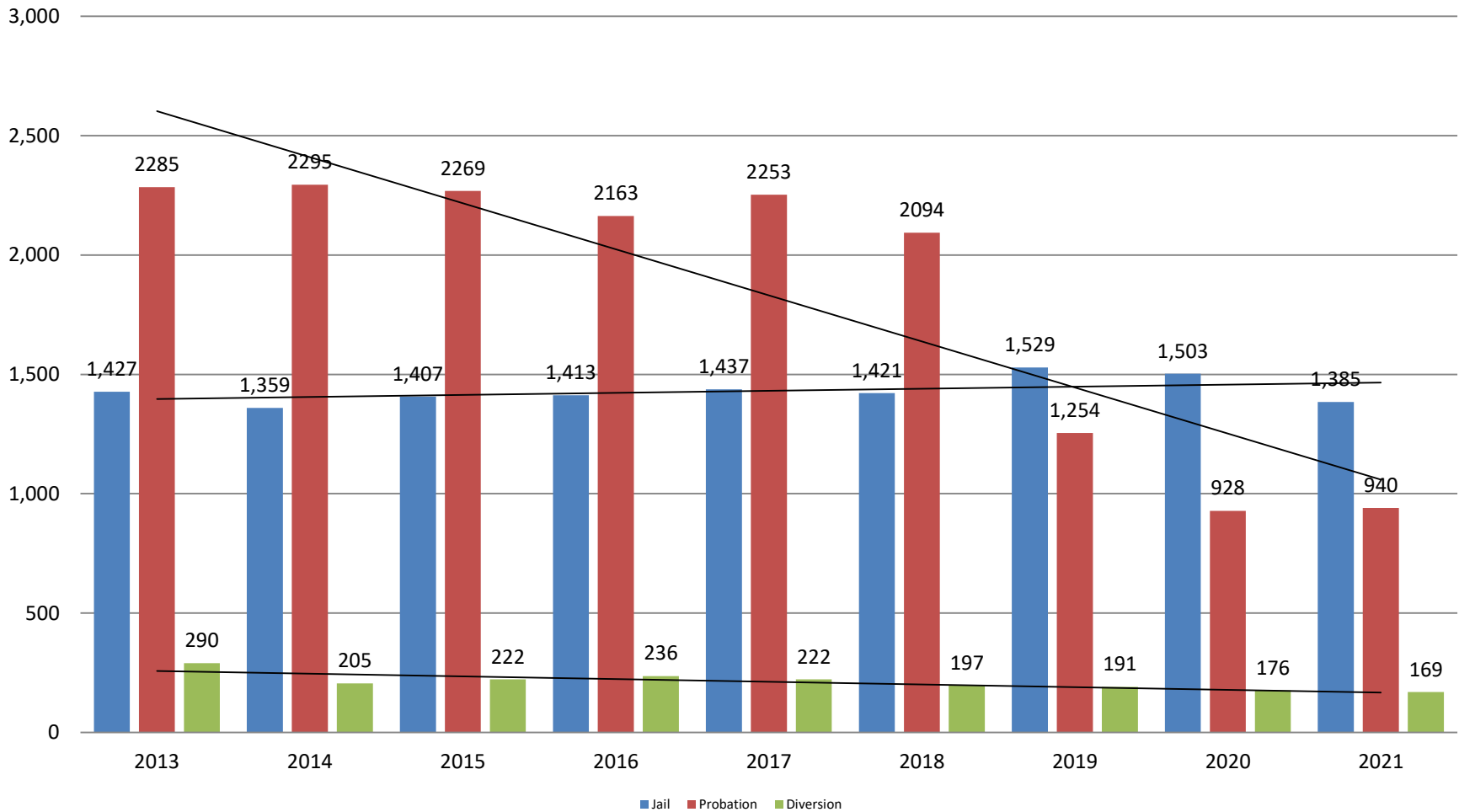


	2019	2020	2021
Jail	1,529	1,503	1,385
AISP	1,553	1,428	1,304
Drug Court	97	88	73
Adult Residential	65	36	27
Work Release	71	30	21
Day Reporting (DC)	0	0	0



Correlation: Total & District Court Programs

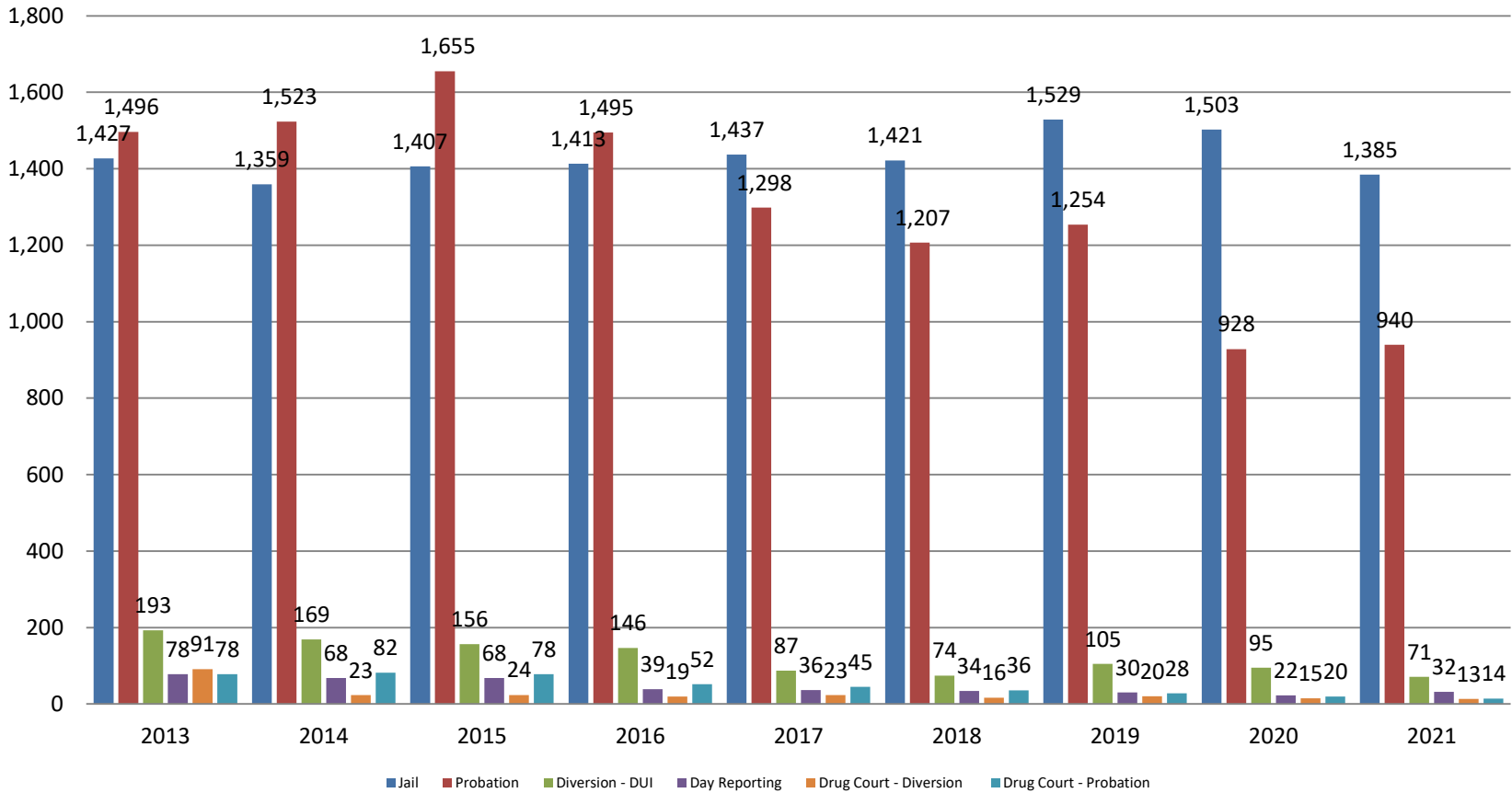
Total Annual ADP: 2013 - present



Jail includes individuals in booking, detention, work release and out-of county (combined)
 (data obtained from detention facility, DA's Office, & District Court)

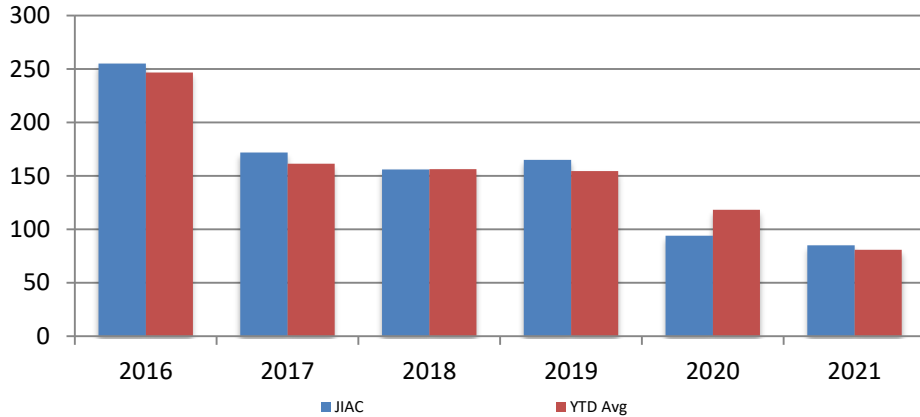
Correlation: Total & City of Wichita / Municipal Court Programs

Total Annual ADP: 2013 - present



Juvenile

**JIAC Intakes
May 2016 - present**

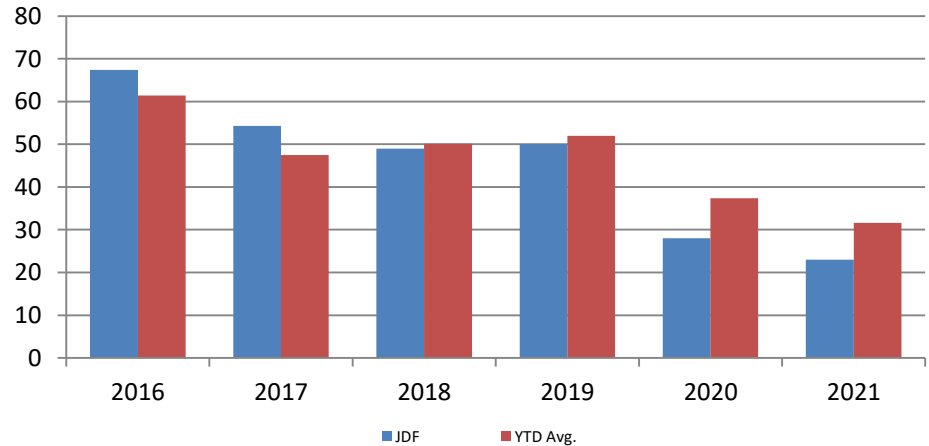


Year	May	May YTD Avg.
2016	255	247
2017	172	161
2018	156	156
2019	165	154
2020	94	118
2021	85	81

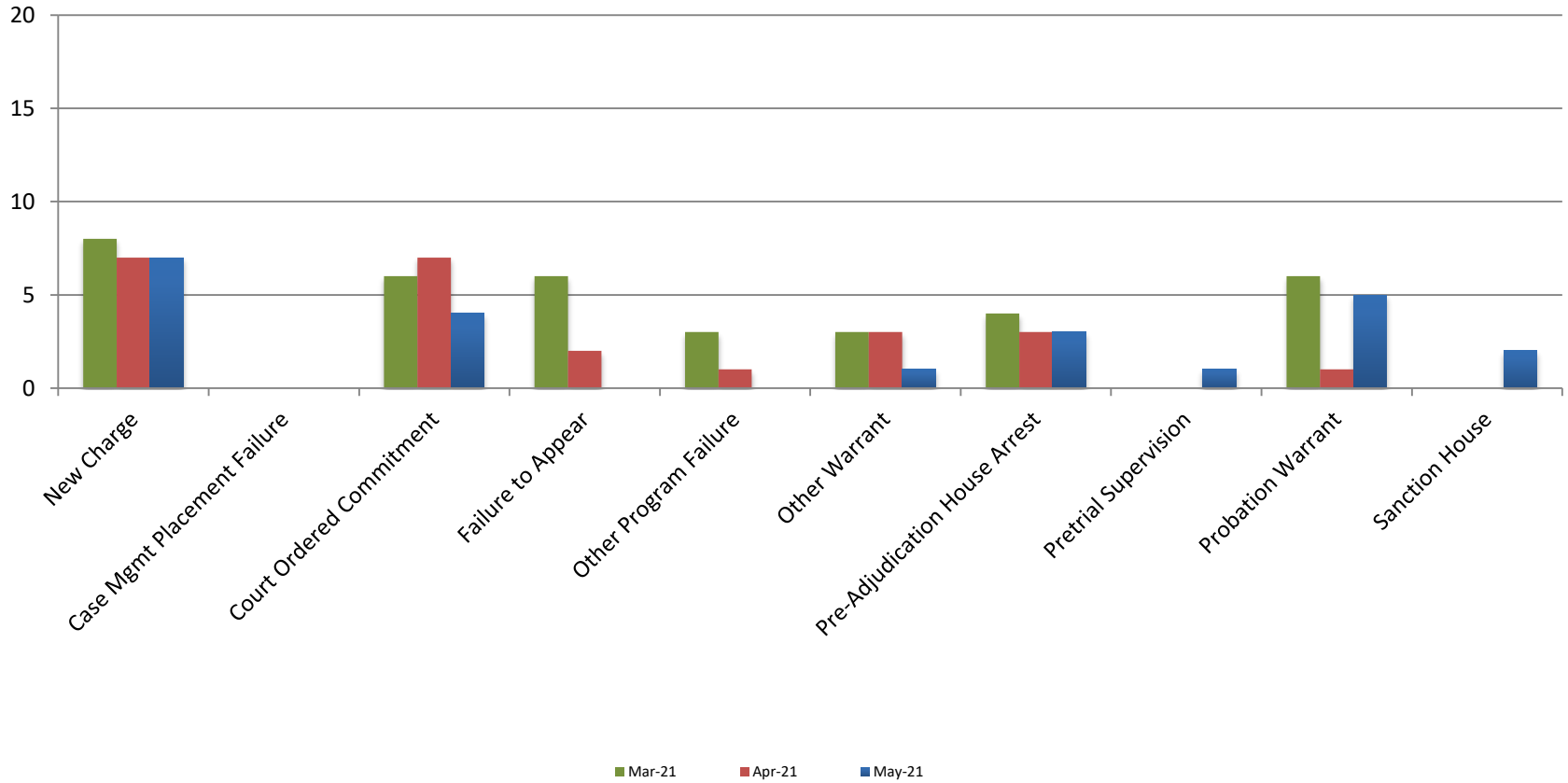
Year May May YTD Avg.

2016	67	61
2017	54	47
2018	49	50
2019	50	52
2020	28	37
2021	23	32

**JDF ADP
May 2016 - present**



Reason for JDF Admits



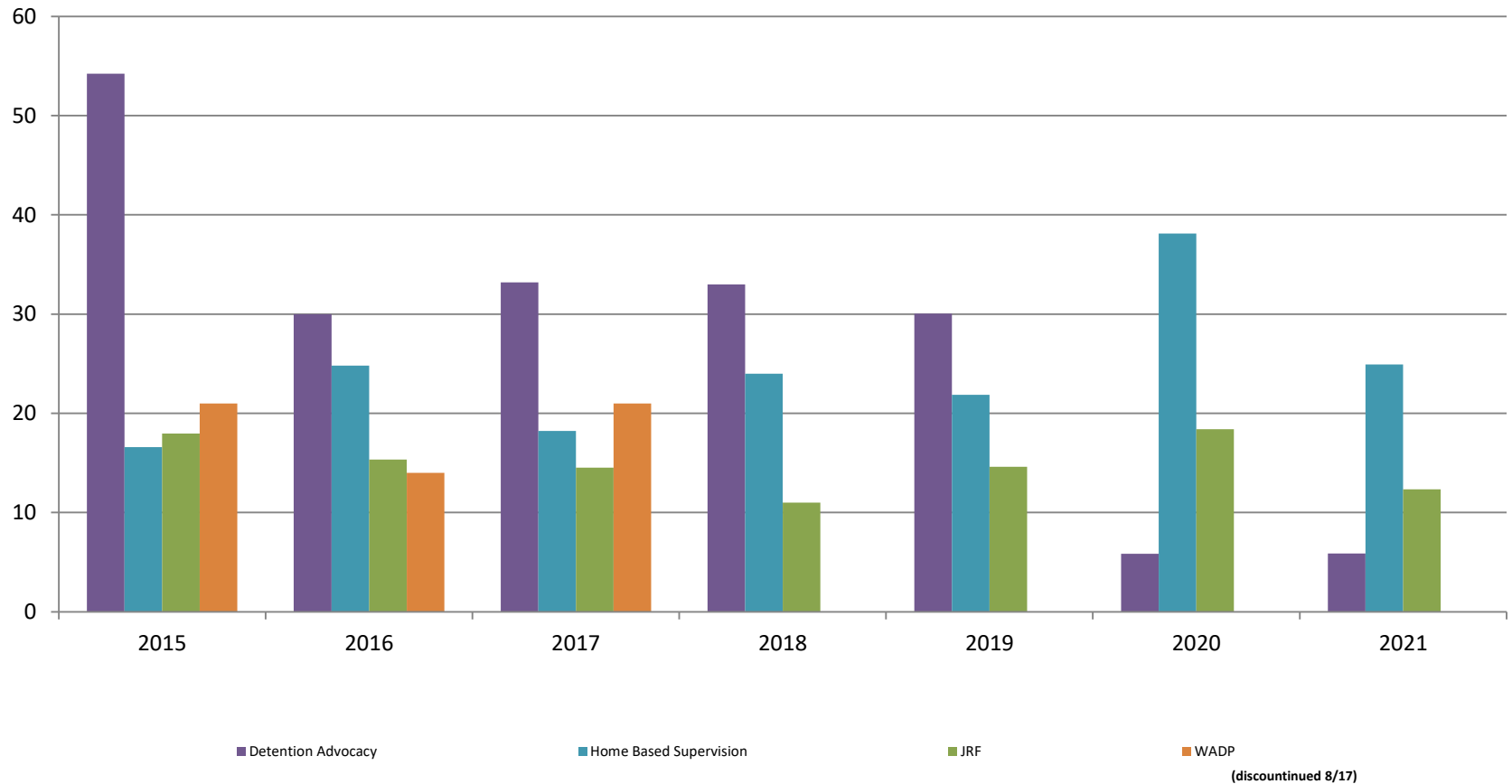
Reason for JDF Admits

Reason	May 2020	May 2021
New Charges	11	7
Case Management Placement Failures	0	0
Court Ordered Commitment	5	4
Failure to Appear	2	0
Other Program Failure	5	0
Other Warrant	2	1
Pre-Adjudication House Arrest	0	3
Pretrial Supervision	0	1
Probation Warrant	3	5
Sanction House	0	2



Juvenile Detention Alternatives

ADP: May 2015 - present



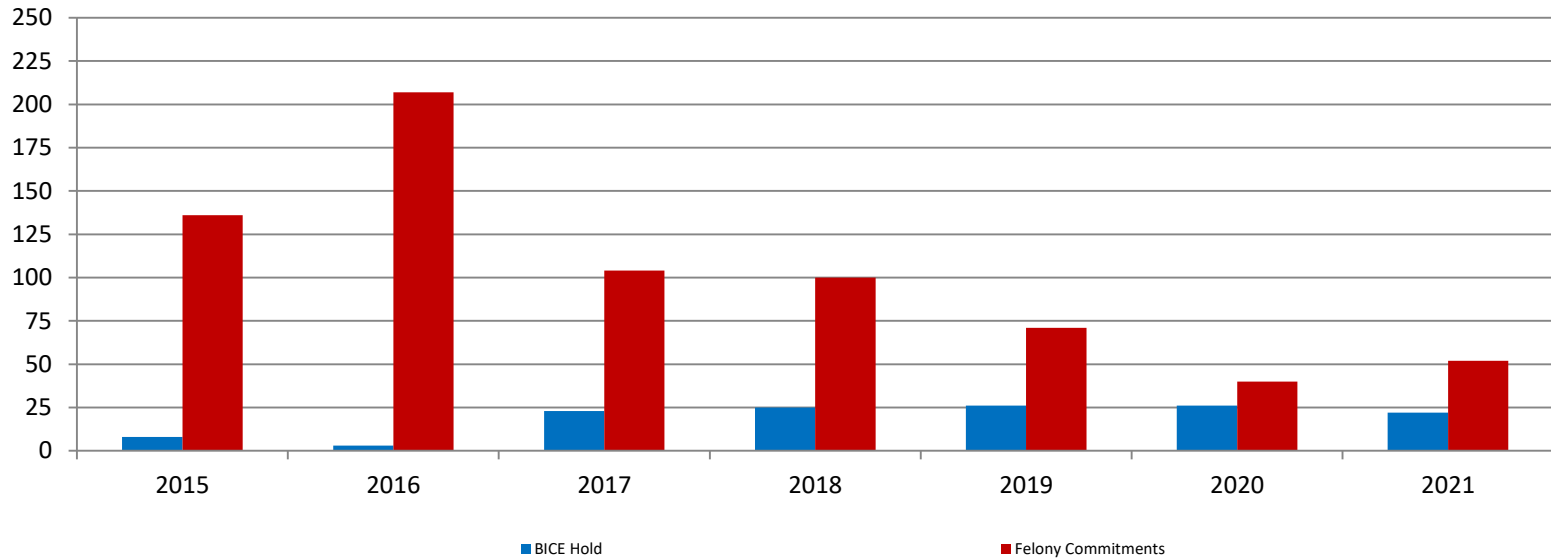
Juvenile Detention Services

May ADP	2018	2019	2020	2021
Juvenile Detention Facility	49	50	28	23
Juvenile Residential Facility	11	15	18	12
Home Based Supervision	24	22	38	25
Detention Advocacy Case Management Services	33	30	6	6
Weekend Alternative Detention Program (total)	0	N/A	N/A	N/A

May YTD AVERAGE	2018	2019	2020	2021
Juvenile Detention Facility	50	52	37	32
Juvenile Residential Facility	12	14	18	10
Home Based Supervision	27	27	24	23
Detention Advocacy Case Management Services	32	29	15	5
Weekend Alternative Detention Program	0	N/A	N/A	N/A

Monthly Jail Snapshot: May 2021

Snapshots May 2015 - present

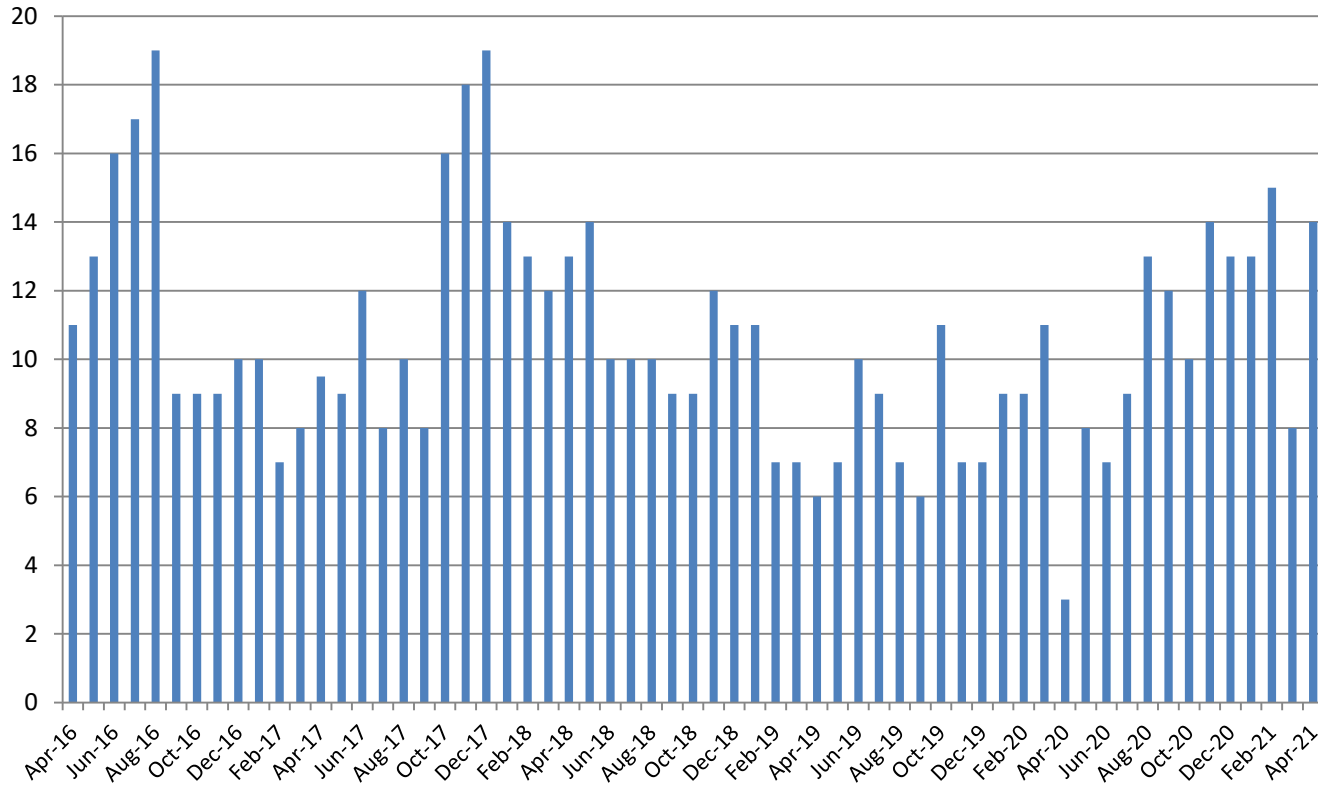


BICE Hold	2015	2016	2017	2018	2019	2020	2021
May	8	3	23	25	26	26	22

Felony Commitments	2015	2016	2017	2018	2019	2020	2021
May	136	207	104	100	71	40	52



Journal Entry Completion (Average Days) April 2016 - present



April	2016	2017	2018	2019	2020	2021
Avg. Days	11	9.5	13	6	3	14
YTD Avg.	11	9	13	7.75	8	13

