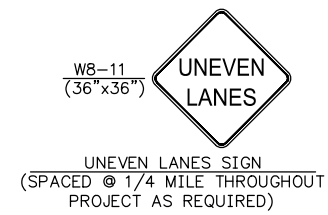
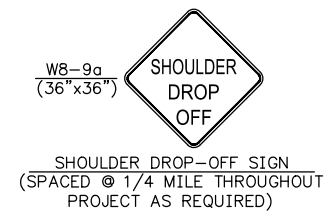
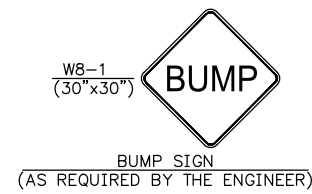


COUNTY	STATE	PROJECT NUMBER	FISCAL YEAR	SHEET NO.	TOTAL SHEETS
SEDGWICK	KANSAS	----	----	####	####

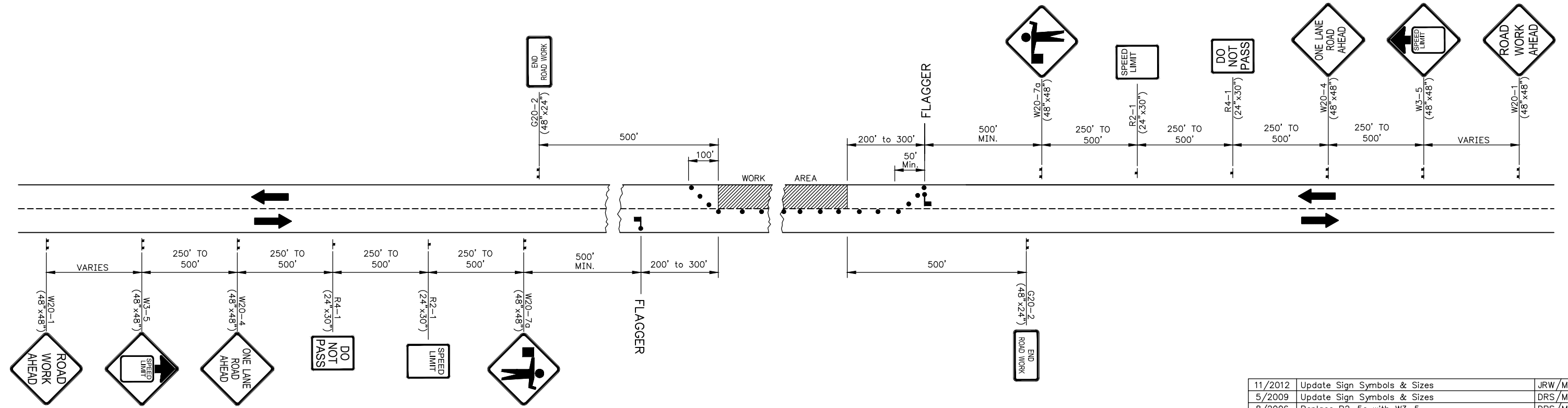


LIST OF TRAFFIC CONTROL DEVICES *

MUTCD DEVICE NO.	NO.	FLASHERS		REMARKS	DELINEATORS & CHANNELIZATION DEVICES					
		TYPE A	TYPE B		DEVICE	NO.	SIZE	FLASHERS		
								TYPE A	TYPE B	TYPE C
W20-1	2				BARRICADES					
W3-5	2				TYPE III					
W20-4	2				TYPE II					
R4-1	2				TYPE I					
R2-1	2				DRUMS					
W20-7a	2				SLIM LINE CHANNELIZERS					
G20-2	2				CONES					
W8-9a					TUBES					
W8-11					VERTICAL PANELS					
W8-1					SINGLE					
					BACK TO BACK					
					PAVEMENT MARKING	WHITE	YELLOW			
					4" BROKEN (Lin. Ft.)					
					4" SOLID (Lin. Ft.)					
					TEMPORARY STRIPING (Line Mile)					

* FOR INFORMATION ONLY

See Sheet Nos. SheetNumber & SheetNumber for Traffic Control Notes.



TRAFFIC CONTROL PLAN FOR HANDLING ONE-LANE TRAFFIC THROUGH WORK AREA (FLAGGER)

NOTE:
 Flagger ahead (W20-7a, symbolic) sign shall be used ONLY when a flagger is present. At all other times this sign shall be covered or removed.
 Flaggers shall comply with the "Handbook For Flaggers" State of Kansas (latest edition).
 On roadways utilizing a flagger, additional flaggers and W20-7a signs may be required when traffic volumes, especially during peak hours, are such that approaching traffic will not have adequate advance warning or when traffic is backed up more than fifteen hundred (1500') feet from the flagger station.

- Channelization devices.

11/2012	Update Sign Symbols & Sizes	JRW/MRB
5/2009	Update Sign Symbols & Sizes	DRS/MRB
8/2006	Replace R2-5c with W3-5	DRS/MRB
Rev.Date	Description	By /Chk

FOR ONE LANE CLOSED ON A TWO-LANE ROADWAY (FLAGGER)
 TC 5-0

PREPARED BY
 SEDGWICK COUNTY PUBLIC WORKS
 HIGHWAY DEPARTMENT

LYNN T. PACKER, P.E. DIRECTOR/COUNTY ENGINEER

SCALE	DESIGNED	DRAWN	CHECKED	SHEET NO.
NONE	M.R.B.	D.R.S.	M.R.B.	---
DATE	6/1988	4/2005	4/2005	

DWG: TC5