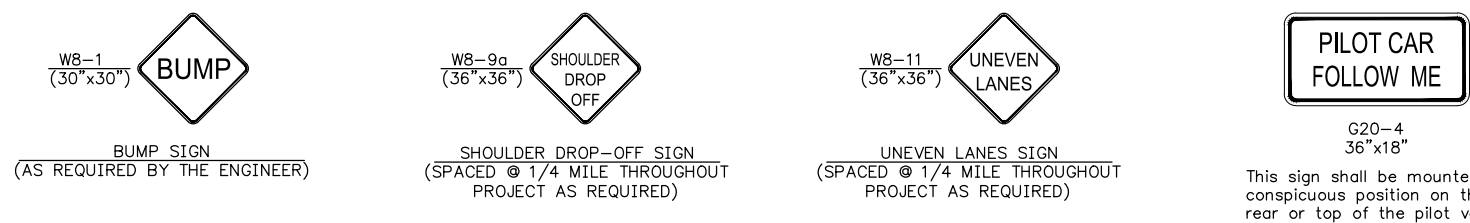


COUNTY	STATE	PROJECT NUMBER	FISCAL YEAR	SHEET NO.	TOTAL SHEETS
SEDGWICK	KANSAS	Project Number	2006	----	----



LIST OF TRAFFIC CONTROL DEVICES *										
MUTCD DEVICE NO.	NO.	FLASHERS		REMARKS	DELINEATORS & CHANNELIZATION DEVICES					
		TYPE A	TYPE B		DEVICE	NO.	SIZE	FLASHERS		
								TYPE A	TYPE B	TYPE C
	G20-1	2			BARRICADES					
≠	W20-1	2			TYPE III					
≠	W20-7b	2			TYPE II					
≠	R4-1	2			TYPE I					
≠	W20-4	2			DRUMS					
≠	W20-7a	2			SLIM LINE CHANNELIZERS					
	G20-2	2			CONES					
	G20-4	1			TUBES					
≠	W8-9a				VERTICAL PANELS					
≠	W8-11				SINGLE					
≠	W8-1				BACK TO BACK					
					PAVEMENT MARKING	WHITE	YELLOW			
					4" BROKEN (Lin. Ft.)					
					4" SOLID (Lin. Ft.)					
					TEMPORARY STRIPING (Line Mile)					

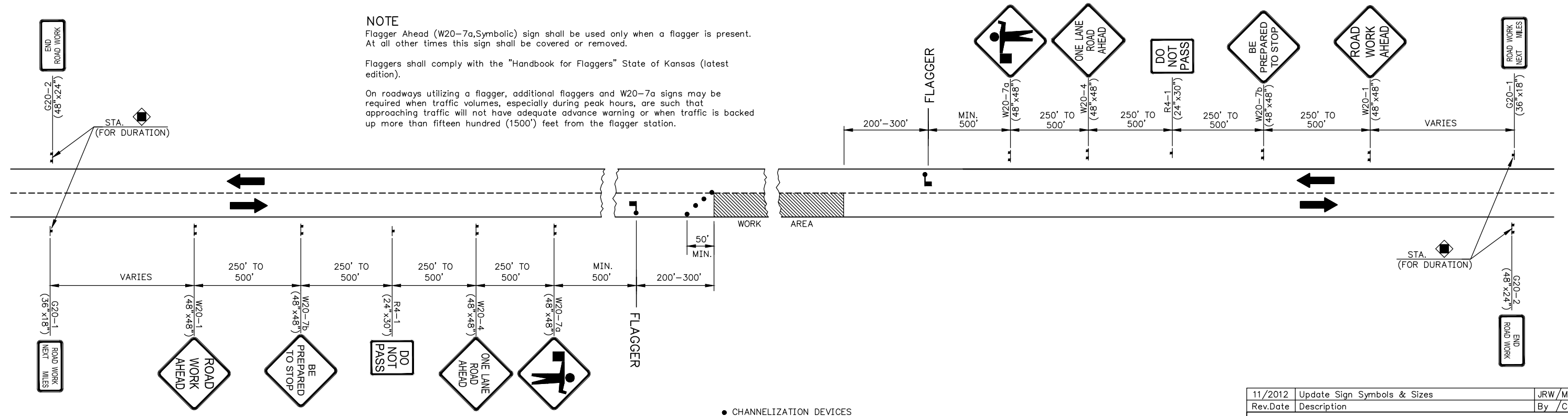
* FOR INFORMATION ONLY

See Sheet Nos. SheetNumber & SheetNumber for Traffic Control Notes.

NOTE
 Flagger Ahead (W20-7a, Symbolic) sign shall be used only when a flagger is present. At all other times this sign shall be covered or removed.

Flaggers shall comply with the "Handbook for Flaggers" State of Kansas (latest edition).

On roadways utilizing a flagger, additional flaggers and W20-7a signs may be required when traffic volumes, especially during peak hours, are such that approaching traffic will not have adequate advance warning or when traffic is backed up more than fifteen hundred (1500') feet from the flagger station.



TRAFFIC CONTROL PLAN
 FOR HANDLING ONE-LANE TRAFFIC THROUGH A
 WORK AREA USING A PILOT CAR

11/2012	Update Sign Symbols & Sizes	JRW/MRB
Rev. Date	Description	By / Chk
TRAFFIC CONTROL PLAN		
FOR A MOVING WORK AREA ON A TWO-LANE ROADWAY USING A PILOT CAR		
TC 8-0		
PREPARED BY SEDGWICK COUNTY PUBLIC WORKS HIGHWAY DEPARTMENT		
LYNN T. PACKER, P.E.		DIRECTOR/COUNTY ENGINEER
SCALE	DESIGNED	DRAWN
NONE	M.R.B.	D.R.S.
DATE	6/1988	4/2005
DWG: TC8		4/2005

Device: AutoCAD PDF (General Documentation).pc3 Page Setup: ---- By: Salmans, John
 \\dropw\cad\Blocks\STANDARDS\TC8.dwg Layout: TC 8-0 Plotted: 3/27/2023 2:20 PM