

This Addendum is hereby made part of the Contract Documents to the same extent as though it were originally included therein.

5 All Contractors, Subcontractors and suppliers are reminded that they shall be familiar with all Addenda items (as well as all parts of the Construction Documents) so as to understand the extent of their work and its interrelation with other trades.

To all bidders for furnishing all labor and materials necessary for the following Contract:

10

**SEDGWICK COUNTY COURTHOUSE –
1ST FLOOR REMODEL**

15

525 N. Main
Wichita, Kansas 67203

20

Prepared by:
Schaefer Architecture, Inc.

GENERAL:

25

ITEM AD1-G01
CLARIFICATION:

SPECIFICATIONS

Acoustical Ceiling is in the Specifications within Section 09 51 00 – Acoustical Ceilings.

ELECTRICAL:

30

ITEM AD1-E01
REVISION:

DRAWING SHEET ED22.1

Panic buttons at existing clerk stations shown to be demolished.

35

ITEM AD1-E02
REVISION:

DRAWING SHEET ED32.1

Existing Hall 100 lights shown to be demolished.

Notes at jail link that are outside the scope of the current project have been omitted.

40

ITEM AD1-E03
REVISION:

DRAWING SHEET E32.1

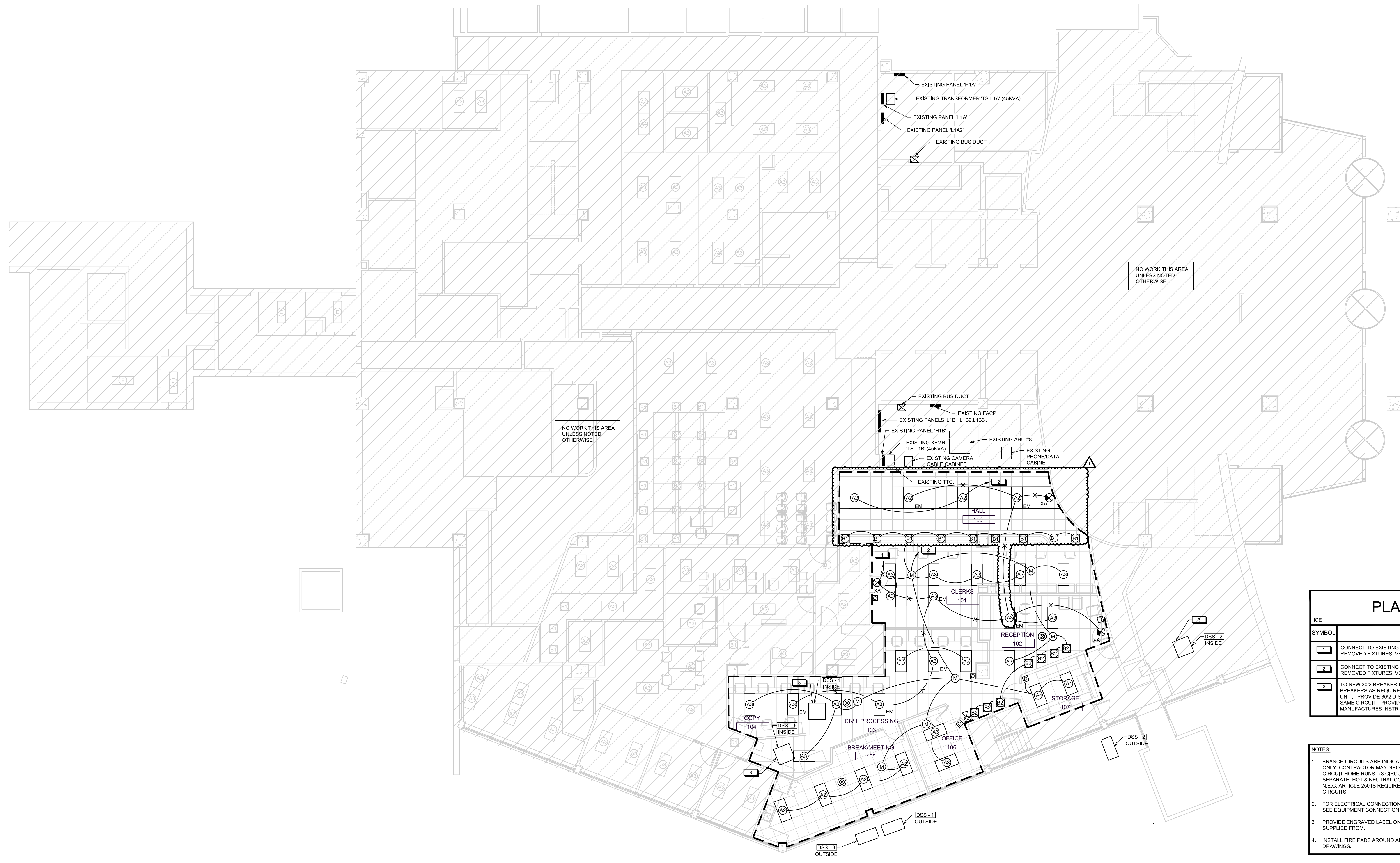
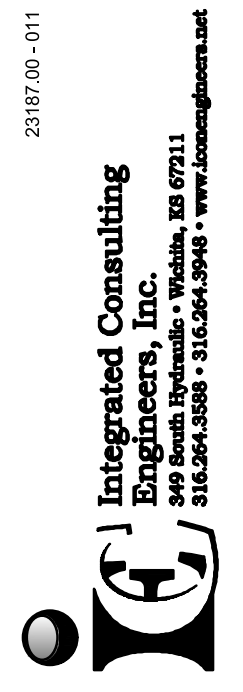
Hall 100 lights shown to be new.

ATTACHMENTS

SHEETS: ED22.1, ED32.1, E32.1

45

END OF ADDENDUM NUMBER 1

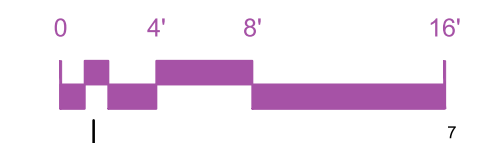


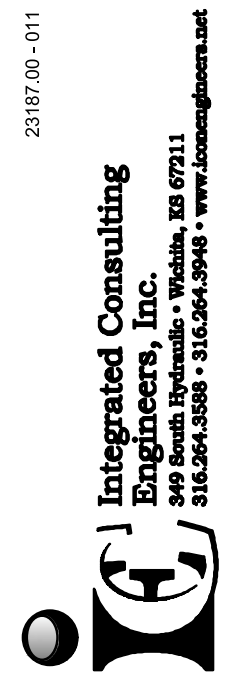
PLAN NOTES

SYMBOL	DESCRIPTION
1	CONNECT TO EXISTING EMERGENCY LIGHTING CIRCUIT IN AREA, FROM REMOVED FIXTURES. VERIFY AT SITE.
2	CONNECT TO EXISTING NORMAL LIGHTING CIRCUIT IN AREA, FROM REMOVED FIXTURES. VERIFY AT SITE.
3	TO NEW 30/2 BREAKER IN PANELS L1B1, L1B2 OR L1B3 REMOVE UNUSED BREAKERS AS REQUIRED. ROUTE 3 #10 & 1 #10 GROUND TO INDOOR UNIT. PROVIDE 30/2 DISC SWITCH AND FEED OUTDOOR UNIT FROM SAME CIRCUIT. PROVIDE 30/2OR FOR OUTDOOR UNIT. INSTALL PER MANUFACTURERS INSTRUCTIONS.

- NOTES:**
- BRANCH CIRCUITS ARE INDICATED AS ONE CIRCUIT HOME RUNS FOR CLARITY ONLY. CONTRACTOR MAY GROUP SINGLE POLE BRANCH CIRCUITS IN MULTIPLE CIRCUIT HOME RUNS. (3 CIRCUIT MAXIMUM). EACH CIRCUIT WILL REQUIRE A SEPARATE, HOT & NEUTRAL CONDUCTOR. A GROUND CONDUCTOR SIZED PER N.E.C. ARTICLE 250 IS REQUIRED IN ALL POWER RECEPTACLE, AND LIGHTING CIRCUITS.
 - FOR ELECTRICAL CONNECTIONS TO ITEMS SUPPLIED BY OTHER CONTRACTORS, SEE EQUIPMENT CONNECTION SCHEDULE.
 - PROVIDE ENGRAVED LABEL ON COVER PLATE TO INDICATE CIRCUIT DEVICE IS SUPPLIED FROM.
 - INSTALL FIRE PADS AROUND ANY DEVICE BOXES INSTALLED IN WALLS, DRAWINGS.

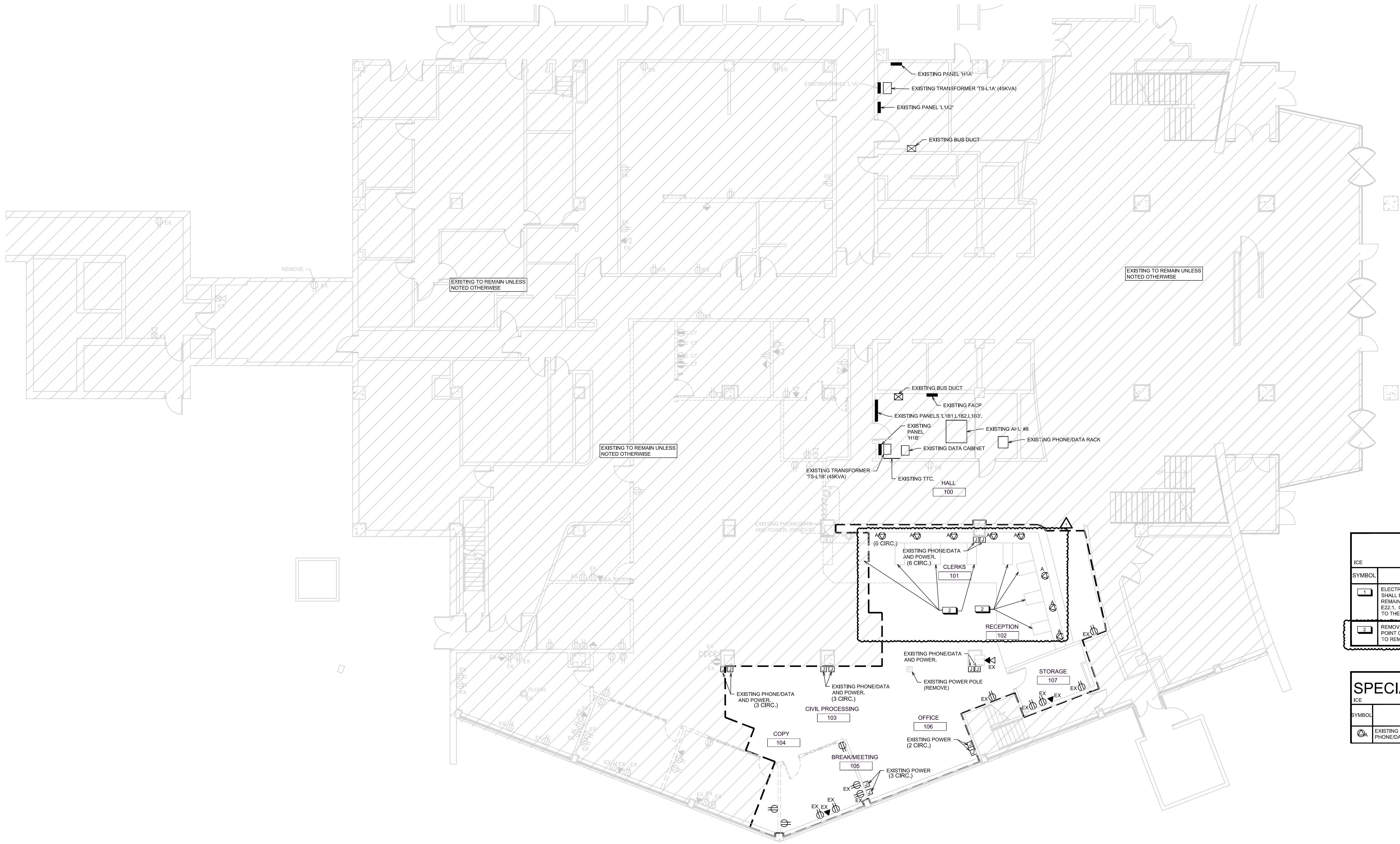
A FLOOR PLAN - LIGHTING
SCALE: 1/8" = 1'-0"
NORTH





DEMOLITION GENERAL NOTES

- 1 VERIFY ALL EXISTING CONDITIONS AT SITE.
- 2 ALL ITEMS NOTED TO BE REMOVED SHALL BE REMOVED COMPLETE BACK TO POINT OF SUPPLY INCLUDING CONDUCTORS AND EXPOSED LENGTHS OF CONDUIT AND RACEWAYS. ALL ITEMS TO REMAIN ON EXISTING CIRCUITS WHERE ITEMS ARE NOTED TO BE REMOVED SHALL BE RECONFIGURED AS REQUIRED TO MAINTAIN CONTINUITY OF CIRCUIT. MOUNTING HOLES, BLEMISHES, AND MISMATCHED PAINT TO BE RECTIFIED BY GENERAL CONTRACTOR.
- 3 ALL CONDUIT, CONDUCTORS, SWITCHES, RECEPTACLES, NOTED TO BE REMOVED SHALL BECOME CONTRACTOR SALVAGE, UNLESS NOTED OTHERWISE. ALL LIGHT FIXTURES, BALLASTS, FIRE ALARM DEVICES, CAMERAS, SPEAKERS, AND ELECTRICAL EQUIPMENT NOTED TO BE REMOVED SHALL BE RETURNED TO OWNER, UNLESS NOTED OTHERWISE.
- 4 ALL DEVICES AND LIGHT FIXTURES NOT NOTED OTHERWISE ON PLAN ARE TO REMAIN.
- 5 ELECTRICAL CONTRACTOR TO REMOVE COVER PLATES FOR ALL EXISTING DEVICES TO REMAIN IN REMODELED AREAS THAT WILL RECEIVE NEW WALL FINISHES AND REINSTALL COVER PLATES AFTER NEW WALL FINISHING IS COMPLETE.
- 6 WHERE EXISTING FLUSH MOUNTED DEVICES ARE NOTED TO BE REMOVED IN EXISTING WALLS TO REMAIN, REMOVE DEVICE, COVER PLATE, AND CONDUCTORS, AND INSTALL BLANK COVER PLATE OVER FLUSH OUTLET BOX.
- 7 EXISTING DEVICES WERE LOCATED FROM VISUAL OBSERVATION OF THE BUILDING. SOME DEVICES NOT READILY VISIBLE MAY EXIST BEHIND FURNITURE AND EQUIPMENT. ELECTRICAL CONTRACTOR SHALL REMOVE ALL DEVICES FROM ALL EXISTING WALLS TO BE REMOVED.
- 8 E.G. TO REMOVE ANY EXISTING ABOVE-FLOOR TOMSTONE DEVICES ON EXISTING UNDERFLOOR DUCT IN REMODELED AREAS, FILL HOLE WITH CEMENT. E.G. TO REMOVE ALL EXISTING CONDUCTORS IN EXISTING UNDERFLOOR DUCT IN REMODELED AREAS THAT ARE NOT ACTIVE CIRCUITS, TURN ALL SPARE CIRCUIT BREAKERS TO OFF POSITION.
- 9 ALL DUSTY OR HIGH NOISE LEVEL WORK (BOTH NEW AND DEMOLITION) SHALL BE SCHEDULED AFTER NORMAL WORKING HOURS. COORDINATE WITH OWNER AND ARCHITECT.
- 10 ELECTRICAL CONTRACTOR SHALL PROVIDE NEW TYPE WRITTEN DIRECTORIES FOR ALL NEW DISTRIBUTION EQUIPMENT AND EXISTING DISTRIBUTION EQUIPMENT BEING REWORKED.
- 11 THE FIRE ALARM SYSTEM SHALL REMAIN INTACT AND OPERATIONAL DURING CONSTRUCTION. PROTECT ANY AREA SMOKE DETECTOR, OR MECH. UNIT DETECTORS.
- 12 ANY SHUT-DOWN OF ELECTRICAL POWER SHALL BE COORDINATED WITH THE OWNER.



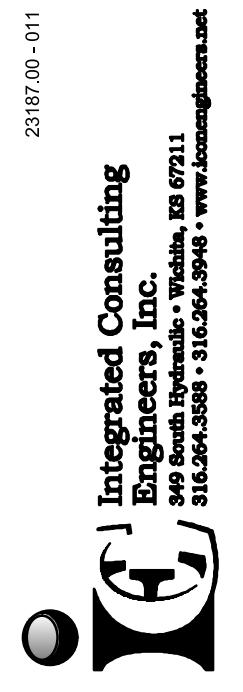
PLAN NOTES

SYMBOL	DESCRIPTION
1	ELECTRICAL DEVICES NOT NOTED AS EXISTING OR MARKED AS EX. SHALL BE REMOVED. CIRCUITRY FROM REMOVED DEVICES SHALL REMAIN TO BE USED FOR NEW DEVICES BEING INSTALLED SHEET SHEET E22.1. CIRCUITS THAT ARE NOT BEING USED SHALL BE REMOVED BACK TO THE POINT OF SUPPLY.
2	REMOVE EXISTING PANIC BUTTON AT EACH WORK STATION BACK TO POINT OF SUPPLY - CONTACT SANDIFER FIRE AND SECURITY FOR COST TO REMOVE.

SPECIAL OUTLET SCHEDULE

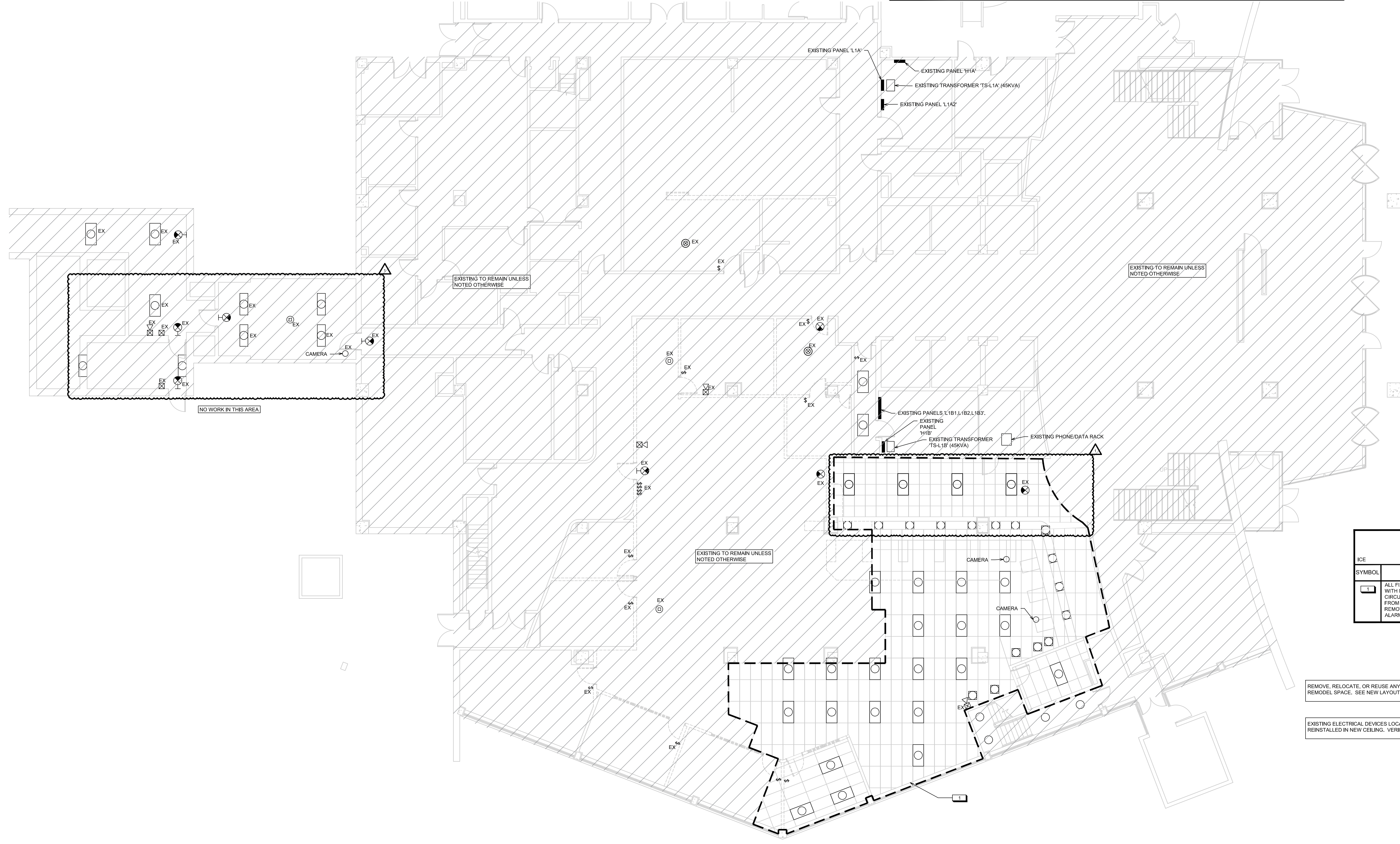
SYMBOL	DESCRIPTION
3	EXISTING OUTLETS, (4) SURGE PROTECTED DUPLEX RECEPTACLES, AND (4) PHONE/DATA OUTLETS TO BE REMOVED.

A FLOOR PLAN - DEMO - POWER
SCALE: 1/8" = 1'-0"
0 4 8 16'
SCALE: 1/8" = 1'-0"
NORTH



DEMOLITION GENERAL NOTES

- ICE - 1ST FLOOR COURTHOUSE
- 1 VERIFY ALL EXISTING CONDITIONS AT SITE.
 - 2 ALL ITEMS NOTED TO BE REMOVED SHALL BE REMOVED COMPLETE BACK TO POINT OF SUPPLY INCLUDING CONDUCTORS AND EXPOSED LENGTHS OF CONDUIT AND RACEWAYS. ALL ITEMS TO REMAIN ON EXISTING CIRCUITS WHERE ITEMS ARE NOTED TO BE REMOVED SHALL BE RECIRCUITED AS REQUIRED TO MAINTAIN CONTINUITY OF CIRCUIT. MOUNTING HOLES, BLEMISHES, AND MISMATCHED PAINT TO BE RECTIFIED BY GENERAL CONTRACTOR.
 - 3 ALL CONDUIT, CONDUCTORS, SWITCHES, RECEPTACLES, NOTED TO BE REMOVED SHALL BECOME CONTRACTOR SALVAGE, UNLESS NOTED OTHERWISE. ALL LIGHT FIXTURES, BALLASTS, FIRE ALARM DEVICES, CAMERAS, SPEAKERS, AND ELECTRICAL EQUIPMENT NOTED TO BE REMOVED SHALL BE RETURNED TO OWNER, UNLESS NOTED OTHERWISE.
 - 4 ALL DEVICES AND LIGHT FIXTURES NOT NOTED OTHERWISE ON PLAN ARE TO REMAIN.
 - 5 ELECTRICAL CONTRACTOR TO REMOVE COVER PLATES FOR ALL EXISTING DEVICES TO REMAIN IN REMODELED AREAS THAT WILL RECEIVE NEW WALL FINISHES AND REINSTALL COVER PLATES AFTER NEW WALL FINISHING IS COMPLETE.
 - 6 WHERE EXISTING FLUSH MOUNTED DEVICES ARE NOTED TO BE REMOVED IN EXISTING WALLS TO REMAIN, REMOVE DEVICE, COVER PLATE, AND CONDUCTORS, AND INSTALL BLANK COVER PLATE OVER FLUSH OUTLET BOX.
 - 7 EXISTING DEVICES WERE LOCATED FROM VISUAL OBSERVATION OF THE BUILDING. SOME DEVICES NOT READILY VISIBLE MAY EXIST BEHIND FURNITURE AND EQUIPMENT. ELECTRICAL CONTRACTOR SHALL REMOVE ALL DEVICES FROM ALL EXISTING WALLS TO BE REMOVED.
 - 8 E.C. TO REMOVE ANY EXISTING ABOVE FLOOR TOMBSTONE DEVICES ON EXISTING UNDERFLOOR DUCT IN REMODELED AREAS. FILL HOLE WITH CEMENT. E.C. TO REMOVE ALL EXISTING CONDUCTORS IN EXISTING UNDERFLOOR DUCT IN REMODELED AREAS THAT ARE NOT ACTIVE CIRCUITS. TURN ALL SPARE CIRCUIT BREAKERS TO OFF POSITION.
 - 9 ALL DUSTY OR HIGH NOISE LEVEL WORK (BOTH NEW AND DEMOLITION) SHALL BE SCHEDULED AFTER NORMAL WORKING HOURS. COORDINATE WITH OWNER AND ARCHITECT.
 - 10 ELECTRICAL CONTRACTOR SHALL PROVIDE NEW TYPE WRITTEN DIRECTORIES FOR ALL NEW DISTRIBUTION EQUIPMENT AND EXISTING DISTRIBUTION EQUIPMENT BEING REWORKED.
 - 11 THE FIRE ALARM SYSTEM SHALL REMAIN INTACT AND OPERATIONAL DURING CONSTRUCTION. PROTECT ANY AREA SMOKE DETECTOR, OR MECH. UNIT DETECTORS.
 - 12 ANY SHUT-DOWN OF ELECTRICAL POWER SHALL BE COORDINATED WITH THE OWNER.



PLAN NOTES

ICE SYMBOL	DESCRIPTION
[Symbol]	ALL FIXTURES WITHIN THIS AREA SHALL BE REMOVED AND REPLACED WITH NEW AS INDICATED ON SHEET ESZ.1. REWORK SWITCHING AND CIRCUITING AS INDICATED. REMOVED FIXTURES SHALL BE REMOVED FROM SITE. EXISTING ELECTRICAL ITEMS IN CEILING SHALL BE REMOVED AND RELOCATED TO NEW CEILING. REFER TO NEW FIRE ALARM LAYOUT FOR NEW DEVICE ADDITION OR RELOCATION.

REMOVE, RELOCATE, OR REUSE ANY EXISTING FIRE ALARM DEVICES WITHIN REMODEL SPACE. SEE NEW LAYOUT. CONNECT TO EXISTING FIRE ALARM SYSTEM.

EXISTING ELECTRICAL DEVICES LOCATED IN CEILING SHALL BE REMOVED AND REINSTALLED IN NEW CEILING. VERIFY AT SITE.

