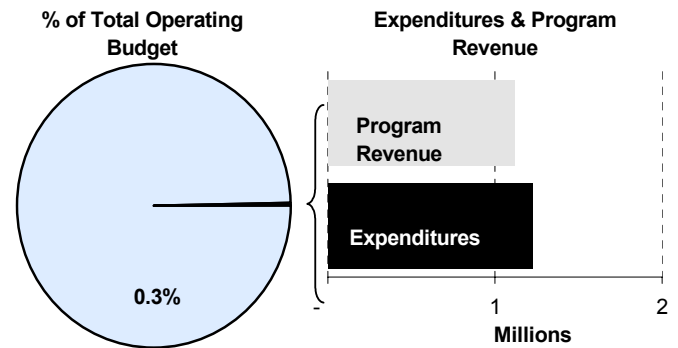
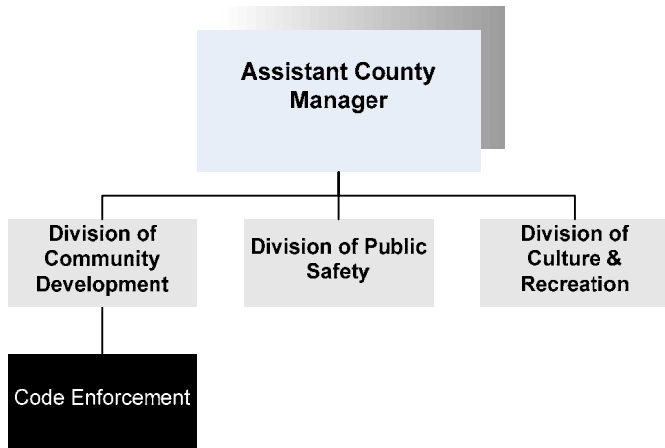




**Glen Wiltse**  
 Director of Code Enforcement  
 1015 Stillwell, 1<sup>st</sup> Floor  
 Wichita, Kansas 67213  
 316-660-7088  
[gwiltse@sedgwick.gov](mailto:gwiltse@sedgwick.gov)

**Mission:**

- Ensure a safe living, working and recreational environment for the residents and citizens of Sedgwick County by creating partnerships with the public to ensure the enforcement of building, construction, zoning, subdivision, nuisance and environmental regulations.



**Program Information**

Code Enforcement ensures that resolutions put forth by the Sedgwick County Commissioners are enforced. The department inspects new construction, remodels, wastewater, and wells for contractors and citizens to make sure the structures meet the adopted codes. They follow up on complaints regarding nuisance and zoning to assure the property is in compliance with the Unified Zoning Code. Their services are provided for the unincorporated Sedgwick County and are contracted to support 10 smaller communities within Sedgwick County.

**Resolutions & Codes:**

- Commercial Building Code
- Residential Building Code
- Residential Building Code Amendments
- Manufactured Homes
- Manufactured Housing Code Amendments
- Rental Housing Code
- Property Title Transfer Inspection Code

- Electrical Code
- Mechanical Code
- Plumbing Code
- Sanitary Advisory Board
- Sanitary Code
- Sanitary Service
- Water Well Advisory Board
- Domestic Well Advisory Board
- Service Drive Code
- Sign Code
- Nuisance
- Nuisance Abatement
- Conservation and Protection of Farmland
- Floodplain Management
- Wastewater
- Wastewater Advisory Board

In 1986 the Federal Emergency Management Agency (FEMA) mapped the areas in Sedgwick County that were prone to flooding. These areas are commonly known as the 100-year floodplain. A more precise description would be the one percent annual chance



flood hazard areas. Basically, this means every year there is a one percent chance that flooding in these areas can occur.

Sedgwick County adopted the FEMA maps and joined the National Flood Insurance Program (NFIP). By joining the NFIP, residents of Sedgwick County are able to purchase flood insurance. Flood insurance is only available through NFIP. The homeowners' insurance policy does not cover damages resulting from flooding.

**Departmental Sustainability Initiatives**

The Department assigns each inspector a quadrant of Sedgwick County to inspect. By doing this the Department reduces the number of miles driven per inspector, which saves on travel time and expenses.

Code Enforcement provides a "One-Stop-Shop" location for citizens to obtain the proper permits needed for construction projects. In the past, citizens would make multiple stops at various destinations to obtain all necessary permits. Permits for building construction, wastewater, floodplain, mortgage inspection, and water wells can now be picked up from the Code Enforcement office at 1144 S. Seneca.

In early 2006, Code Enforcement took over supervision of duties for the Animal Control Department, effectively placing all enforcement of County codes under one department. The Animal Control budget can be referenced within the Health and Welfare section of this document.

The Department of Code Enforcement has in place three resolutions that regulate domestic water wells, wastewater systems and a provision for property title transfers. These resolutions provide for the community's environmental safety.

The provisions of the domestic water well code are for the purpose of regulating and controlling the

development maintenance and use of water supplies in Sedgwick County, Kansas, in order that public health will be protected and the contamination and pollution of the water resources of the County will be prevented.

The provisions of the property title transfer inspection codes are for the purpose of regulating and controlling the maintenance of water wells and onsite wastewater systems by requiring inspections of such wells and onsite wastewater systems when title to property is transferred in order that the public health will be protected and the contamination and pollution of the water resources of the County will be prevented.

The provision of the Sanitary Code provides for new construction and maintenance of onsite wastewater systems.

**Department Accomplishment**

The staff of Code Enforcement attends continuing education opportunities to stay current with their certifications. The wastewater staff provides educational training to wastewater installers, realtors and community officials. Code Enforcement also assisted the Health Department in drafting swimming pool, hot tub and spa regulations. The regulations benefit the public by reducing the potential for communicable diseases transferred thru water.

**Alignment with County Values**

- **Accountability -**  
Code Enforcement requires daily logs that include location, type of inspection, number of inspections, miles driven, number of phone calls received, revenue received, permits issued, founded complaints and complaints resolved
- **Commitment -**  
Code Enforcement is committed to the enforcement of adopted codes and regulations that insure public safety and provide a safe living, working and recreational environment for our community
- **Honesty and Open Communication -**  
The Department believes in open and honest dialog with their customers to educate and assist them in achieving success with land use within unincorporated Sedgwick County

---

**Goals & Initiatives**

- **Perform 90% of inspections within 24 hours and 100% of inspections within 48 hours of receiving notification**
- **Increase permitting opportunity by establishing a one-stop shop for building, wastewater, floodplain and sign permits**

**Budget Adjustments**

Changes to Code Enforcement's 2009 budget reflect increases in benefits costs and a 4.0 percent salary pool for employees. The budget also reflects a 3.0 percent increase in contractals, commodities, and capital equipment from the 2008 Adopted budget.



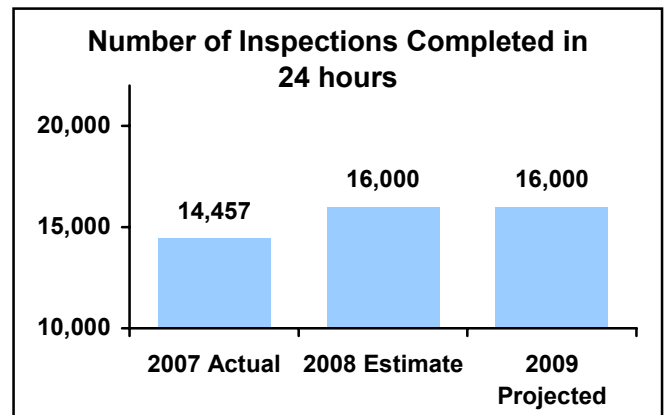


**PERFORMANCE MEASURE HIGHLIGHTS**

The following chart illustrates performance measure highlights of Code Enforcement.

**Number of inspections completed in 24 hours -**

- This measure reflects the Department’s commitment to meet the citizens’ and contractors’ time constraints and insure that the codes are being met.



**Department Performance Measures**

| Key Performance Indicator                   | 2007 Actual | 2008 Est. | 2009 Proj. |
|---|-------------|-----------|------------|
| Number of inspections completed in 24 hours | 14,457      | 16,000    | 16,000     |

**Other Performance Measures**

|  |         |         |         |
|--|---------|---------|---------|
| Number of buildings requiring 2 <sup>nd</sup> inspection | 599     | 625     | 625     |
| Land use complaints                                      | 1,932   | 1,900   | 1,700   |
| Permits issued   | 3,091   | 3,000   | 3,000   |
| Vehicle usage  | 160,096 | 160,000 | 160,000 |
| Inspections per inspector                                | 1,830   | 1,800   | 1,800   |
| Plan review  | 89      | 95      | 95      |



● Code & LEPP

Administrative staff issues permits for the unincorporated areas of the County, reviews permits issued for ten cities within Sedgwick County, licenses contractors and building and trade companies, and furnishes zoning and subdivision information to citizens, realtors, appraisers, and contractors. Permit fees are also collected here for the unincorporated area of Sedgwick County and the ten communities in which inspection services are provided.

Duties also include monitoring the Local Environmental Protection Plan (LEPP) grant, which the County assumed 100% responsibility for in July of 2005 from the City of Wichita.

**Fund(s): General Fund 110/Misc Grants 279**

|                                     | 2007             | 2008             | 2008             | 2009             | % Chg.        |
|-------------------------------------|------------------|------------------|------------------|------------------|---------------|
|                                     | Actual           | Adopted          | Revised          | Budget           | 08-09         |
| <b>Expenditures</b>                 |                  |                  |                  |                  |               |
| Personnel                           | 392,269          | 410,236          | 400,425          | 431,405          | 7.7%          |
| Contractual Services                | 29,313           | 46,000           | 46,901           | 30,000           | -36.0%        |
| Debt Service                        | -                | -                | -                | -                | -             |
| Commodities                         | 6,730            | 5,981            | 25,006           | 21,981           | -12.1%        |
| Capital Improvements                | -                | -                | -                | -                | -             |
| Capital Equipment                   | -                | -                | -                | 6,000            | -             |
| Interfund Transfers                 | -                | -                | -                | -                | -             |
| <b>Total Expenditures</b>           | <b>428,312</b>   | <b>462,217</b>   | <b>472,332</b>   | <b>489,386</b>   | <b>3.6%</b>   |
| <b>Revenue</b>                      |                  |                  |                  |                  |               |
| Taxes                               | -                | -                | -                | -                | -             |
| Intergovernmental                   | 125,000          | 127,500          | 127,500          | 125,000          | -2.0%         |
| Charges For Service                 | 681,457          | 828,348          | 828,348          | 714,469          | -13.7%        |
| Other Revenue                       | 256,240          | 500,001          | 500,001          | 275,022          | -45.0%        |
| <b>Total Revenue</b>                | <b>1,062,697</b> | <b>1,455,849</b> | <b>1,455,849</b> | <b>1,114,491</b> | <b>-23.4%</b> |
| <b>Full-Time Equivalents (FTEs)</b> | <b>7.00</b>      | <b>7.00</b>      | <b>7.00</b>      | <b>7.00</b>      | <b>0.0%</b>   |

**Goal(s):**

- Increase customer service to homeowners and contractors
- Create additional reference materials for citizens
- Provide additional services to contractors and the public

● Building Insp.

The Building Inspection program inspects construction projects in the unincorporated area of Sedgwick County. This consists of building, electrical, plumbing and mechanical inspections during the construction phase of all building projects. This also includes the ten communities with whom the County has contracts to perform inspection services. Commercial project plans are reviewed prior to construction. In addition to building inspections, this department has taken over the enforcement of the sanitary code. This involves review of soils and groundwater information for issuing private wastewater disposal system permits, subdivision reviews for private wastewater system approval, complaints, and consultations for existing wastewater systems. The County now has floodplain regulations adopted and FEMA issued a new map study in February 2007.

**Fund(s): General Fund 110**

42001-110

|                                     | 2007           | 2008           | 2008           | 2009           | % Chg.       |
|-------------------------------------|----------------|----------------|----------------|----------------|--------------|
|                                     | Actual         | Adopted        | Revised        | Budget         | 08-09        |
| <b>Expenditures</b>                 |                |                |                |                |              |
| Personnel                           | 471,399        | 426,021        | 426,021        | 580,552        | 36.3%        |
| Contractual Services                | 66,425         | 60,000         | 60,000         | 70,000         | 16.7%        |
| Debt Service                        | -              | -              | -              | -              | -            |
| Commodities                         | 8,064          | 12,000         | 12,000         | 2,000          | -83.3%       |
| Capital Improvements                | -              | -              | -              | -              | -            |
| Capital Equipment                   | (150)          | -              | -              | -              | -            |
| Interfund Transfers                 | -              | -              | -              | -              | -            |
| <b>Total Expenditures</b>           | <b>545,738</b> | <b>498,021</b> | <b>498,021</b> | <b>652,552</b> | <b>31.0%</b> |
| <b>Revenue</b>                      |                |                |                |                |              |
| Taxes                               | -              | -              | -              | -              | -            |
| Intergovernmental                   | -              | -              | -              | -              | -            |
| Charges For Service                 | -              | -              | -              | -              | -            |
| Other Revenue                       | -              | -              | -              | -              | -            |
| <b>Total Revenue</b>                | <b>-</b>       | <b>-</b>       | <b>-</b>       | <b>-</b>       | <b>-</b>     |
| <b>Full-Time Equivalents (FTEs)</b> | <b>8.00</b>    | <b>7.00</b>    | <b>8.00</b>    | <b>9.00</b>    | <b>12.5%</b> |

**Goal(s):**

- Reduce re-inspections of contractors' projects by enhancing inspection services
- Offer "one-stop" service for permits related to building construction and zoning requirements
- Reduce response time for inspections
- Provide increased customer service to contractors and public for private sewage system installations



• Land Use

Land Use is responsible for enforcement of the Wichita & Sedgwick County Unified Zoning Code Regulations and the Sedgwick County Nuisance Codes Resolution. Zoning regulations include the review and monitoring of conditional uses, home occupations, land use issues and compliance. Enforcement of the nuisance code resolution generally consists of responding to citizen complaints dealing with inoperable vehicles, trash, tall grass, salvage material, and open and abandoned structures.

Fund(s): General Fund 110

42002-110

|                                     | 2007           | 2008           | 2008           | 2009          | % Chg.        |
|-------------------------------------|----------------|----------------|----------------|---------------|---------------|
|                                     | Actual         | Adopted        | Revised        | Budget        | 08-09         |
| <b>Expenditures</b>                 |                |                |                |               |               |
| Personnel                           | 101,628        | 180,412        | 180,412        | 43,205        | -76.1%        |
| Contractual Services                | 39,788         | 40,000         | 29,885         | 40,000        | 33.8%         |
| Debt Service                        | -              | -              | -              | -             |               |
| Commodities                         | 8,342          | 10,000         | 10,000         | 2,583         | -74.2%        |
| Capital Improvements                | -              | -              | -              | -             |               |
| Capital Equipment                   | -              | -              | -              | -             |               |
| Interfund Transfers                 | -              | -              | -              | -             |               |
| <b>Total Expenditures</b>           | <b>149,758</b> | <b>230,412</b> | <b>220,297</b> | <b>85,788</b> | <b>-61.1%</b> |
| <b>Revenue</b>                      |                |                |                |               |               |
| Taxes                               | -              | -              | -              | -             |               |
| Intergovernmental                   | -              | -              | -              | -             |               |
| Charges For Service                 | -              | -              | -              | -             |               |
| Other Revenue                       | 600            | -              | -              | -             |               |
| <b>Total Revenue</b>                | <b>600</b>     | <b>-</b>       | <b>-</b>       | <b>-</b>      |               |
| <b>Full-Time Equivalents (FTEs)</b> | <b>2.00</b>    | <b>3.00</b>    | <b>2.00</b>    | <b>1.00</b>   | <b>-50.0%</b> |

Goal(s):

- Offer “one-stop” service for citizen complaints related to nuisance and zoning compliance
- Provide investigation of complaints within 48 hours
- Update website for access to code information by general public

