

SEDGWICK COUNTY
AND
JUVENILE JUSTICE AUTHORITY
PREVENTION AND
GRADUATED SANCTIONS PROGRAMS



VISION

We envision Sedgwick County as a community of strong families in which children can develop in a safe and healthy manner to live productive lives.



Sedgwick County...
working for you

TABLE OF CONTENTS

History.....	3
Statewide Outcomes.....	5
Communities That Care Risk Factors Addressed.....	6
Risk-Need-Responsivity Risk Factors Assessed.....	7

JUVENILE JUSTICE AUTHORITY PROGRAMS

PREVENTION PROGRAMS:

D.A.'s Diversion/Immediate Intervention Program.....	9
Detention Advocacy Service.....	10
Family Group Conferencing.....	11
Functional Family Therapy.....	12
JAC Case Management.....	13
Parent Training.....	14
Truancy Prevention Program.....	15

GRADUATED SANCTIONS PROGRAMS:

Juvenile Intake and Assessment Center (JAC).....	18
Juvenile Case Management.....	19
Juvenile Intensive Supervision Program.....	20

SEDGWICK COUNTY COMMUNITY CRIME PREVENTION PROGRAMS

History.....	22
Big Brothers Big Sisters.....	23
City Works.....	24
Communities In Schools.....	25
Education, Training and Employment Program.....	26
Learning the Ropes Program.....	27
PATHS for Kids.....	28
Targeted Outreach Program.....	29
Teen Intervention Program.....	30
Board of County Commission and Team Justice Members.....	31
Contact Information.....	32

JUVENILE JUSTICE AUTHORITY



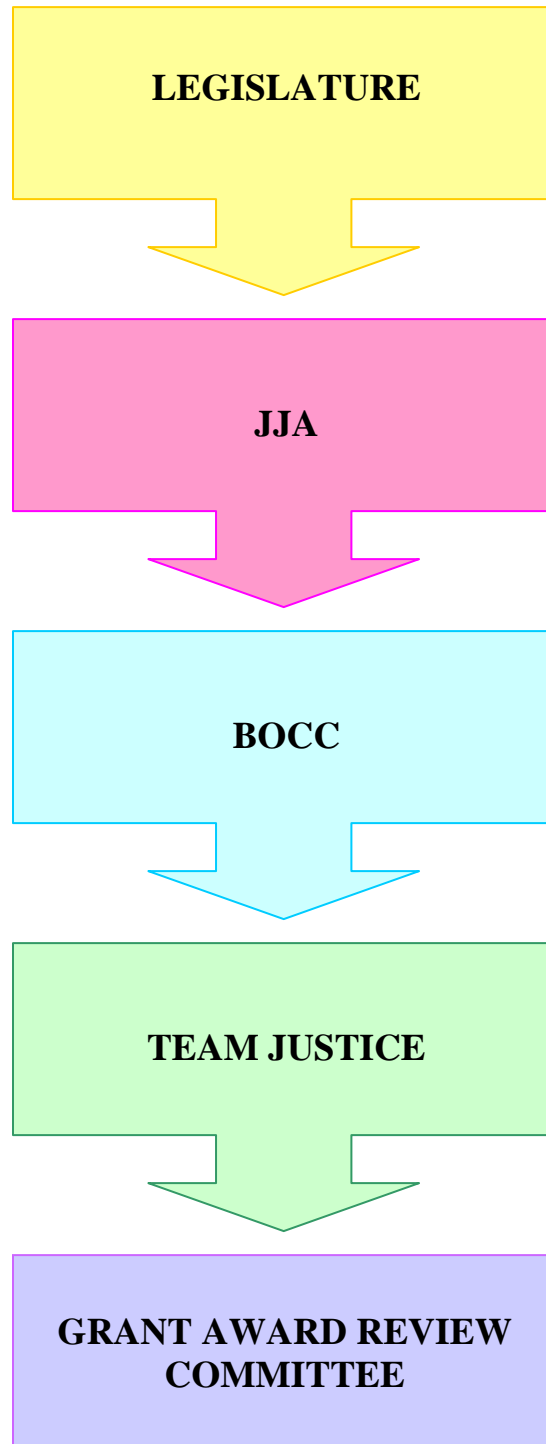
History

In 1997, strategic planning for juvenile justice reform was mandated by the state legislature to develop local juvenile justice programs across Kansas. In 1998, the State of Kansas Juvenile Justice Authority (JJA) provided an extensive amount of training, technical assistance and consultation to 29 Community Planning Teams, (representing the 105 counties) that were to create a local strategic plan. Our local team was well supported by key community leaders and included representation from a broad spectrum of our community.

In November of 1998, the Sedgwick County Community Planning Team completed a five-year strategic plan that addressed local juvenile justice needs, ranging from prevention to secure incarceration. In January of 1999, the Sedgwick County Juvenile Corrections Advisory Board (Team Justice) was established as an advisory board to the Sedgwick County Board of County Commissioners (BOCC). The primary mission of Team Justice is to make recommendations to the Commissioners on matters of juvenile justice, and to keep the needs of juvenile offenders in the hearts and minds of the legislators, government officials, and the entire community. Team Justice utilizes a Grant Award Review Committee for recommendations on how delinquency prevention programs and services related to juvenile offenders can best be delivered.

In 1999, Team Justice worked with Wichita State University to develop a funding application to implement programs that would address the service gaps identified in the strategic plan. In January of 2000, JJA provided funding to implement several prevention, intervention, and graduated sanctions programs in the 18th Judicial District. JJA currently provides funding for seven prevention and three graduated sanctions programs.

Juvenile Justice System



Statewide Outcomes

State-wide outcomes addressed by prevention and graduated sanctions programs funded by the Juvenile Justice Authority:

- Reduce adjudications for serious, violent, and/or chronic crimes among youth age 10-17 years old.
- Reduce the number of youth requiring removal from the family or community for juvenile offending.
- Juveniles leaving juvenile correctional facilities will demonstrate a higher level of knowledge, skills and confidence necessary for successful community reintegration.
- Increase community participation in addressing local juvenile justice needs.
- Increase the accountability of youth within communities.

CTC RISK FACTORS ADDRESSED BY EACH PROGRAM

	Family Management Problems	Academic Failure Beginning in Late Elementary School	Lack of Commitment to School	Early and Persistent Anti-social Behavior
Primary Prevention Program				
Choose Respect	●			
Secondary Prevention Programs				
Big Brothers Big Sisters		●	●	●
Communities In Schools	●	●	●	●
Parent Training	●			●
PATHS for Kids			●	●
Truancy Prevention Program	●	●	●	●
Tertiary Prevention Programs				
City Works*				
D.A.'s Diversion/Immediate Intervention Program	●			●
Detention Advocacy Service	●			●
Education, Training and Employment Program		●	●	
Family Group Conferencing	●			●
Functional Family Therapy	●			●
JAC Case Management	●		●	●
Learning the Ropes	●			●
ON-TRAC	●	●	●	●
Targeted Outreach		●	●	
Teen Intervention Program	●		●	●

*City Works is a program better suited to the RNR Model because of the focus on job training and employment with the target population being at-risk youth who are already involved in the correctional system.

METHOD TO ASSESS RNR RISK FACTORS*

	JIAC Brief Screen**	Agency Efforts
Primary Prevention		
Choose Respect		This program does not assess risk but is a non-targeted, primary prevention program.
Secondary Prevention		
Big Brothers Big Sisters		Non-criminogenic risk factors are assessed in a non-actuarial (subjective / clinical) way. Case Management staff utilize a face-to-face interview process to determine needs of the child and to best match with a volunteer with similar interests. A risk factor checklist based on the Communities That Care Model is used to determine multiple risk factors for delinquency.
Communities In Schools		At service initiation a Teacher Referral/Follow-up and Service Plan is developed with the child. Follow-up to show progress on each of these forms is completed upon student exit or end of school year. Currently the assessment is non-actuarial.
Parent Training		Non-criminogenic risk factors are assessed by the Adult-Adolescent Parenting Inventory (AAPI-2) that is administered upon entry to and exit from the program. Staff are considering a supplemental assessment tool to measure criminogenic risks.
PATHS for Kids		Currently this program does not assess risk but is a non-targeted, primary prevention program. For FY09, staff intend to use a non-actuarial risk assessment through a Teacher Registration Form to identify a high risk subset of students to target with additional services.
Truancy Prevention Program – USD 259		Non-criminogenic risk factors are assessed by a multiple risk factor checklist based on the Communities That Care Model.
Truancy Prevention Program – D.A.’s Office	●	Program utilizes the risk assessment conducted by JIAC and an interview questionnaire.
Tertiary Prevention		
City Works	●	Program utilizes the risk assessment conducted by JIAC or the Youthful Level of Service / Case Management Inventory conducted by Juvenile Field Services.
D.A.’s Diversion/Immediate Intervention Program	●	Program utilizes the risk assessment conducted by JIAC as well as a structured interview along with a thorough background investigation to assess clients for a wide range of risk factors.
Detention Advocacy Service	●	Program utilizes the risk assessment conducted by JIAC. Staff are also trained to administer the Youthful Level of Service / Case Management Inventory, a criminogenic risk factor assessment tool.
Education, Training and Employment Program		Non-criminogenic risk factors are assessed in a non-actuarial (subjective / clinical) way. Staff interview youth during the enrollment process to identify risk factors.
Family Group Conferencing	●	Program utilizes the risk assessment conducted by JIAC as well as a structured interview along with a thorough background investigation to assess clients for a wide range of risk factors.
Functional Family Therapy	●	Program utilizes risk assessment information provided by referral sources, including the risk assessment conducted by JIAC.
JIAC Case Management	●	Program utilizes the risk assessment conducted by JIAC as well as a basic assessment, a client survey and a Life Change Scale.
Learning the Ropes	●	Program utilizes the risk assessment conducted by JIAC as well as three standardized tools to provide a comprehensive, although non-actuarial, assessment of the eight major risk/need factors as they impact risk for substance use, abuse and relapse.
ON-TRAC	●	Program utilizes the risk assessment conducted by JIAC as well as a non-actuarial, non-criminogenic assessment conducted by staff at program initiation.
Targeted Outreach		Non-criminogenic risk factors are assessed in a non-actuarial (subjective / clinical) way. A case management intake form is completed during the enrollment process.
Teen Intervention Program	●	Program utilizes the risk assessment conducted by JIAC as well as an informal assessment by staff and social work students.

*The Risk-Need-Responsivity (RNR) Model has eight major risk factors: history of antisocial behavior, antisocial cognition, antisocial associates, antisocial personality, family and/or marital, leisure and/or recreation, substance abuse and school and/or work.

**Programs that accept referrals from the Juvenile Intake and Assessment Center (JIAC) can utilize the objective risk screening instrument (the SCDOC Juvenile Risk Assessment Instrument: Brief Screen) completed on the client during the assessment process.

JUVENILE JUSTICE AUTHORITY PREVENTION PROGRAMS

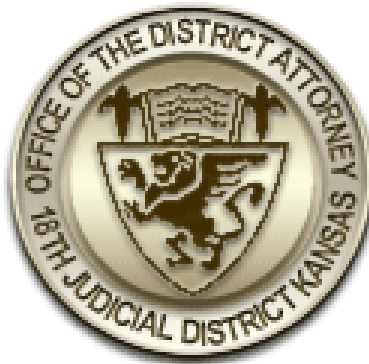


D.A.'s DIVERSION/IMMEDIATE INTERVENTION PROGRAM

Service Provider: District Attorney's Office

Program Description: The District Attorney's Diversion/Immediate Intervention Program is designed to give an opportunity to certain youthful offenders to accept responsibility for their crimes; to receive rehabilitative services and sanctions; to provide restitution or other restorative measures to victims; to alleviate the stigma and lasting effects of a formal adjudication; and to preserve scarce judicial resources. The target population includes juvenile offenders, who have no prior adjudications or diversions, and are charged with an eligible offense in the 18th Judicial District. Examples of eligible offenses are: theft, battery, disorderly conduct, criminal damage to property, burglary, and misdemeanor drug offenses. This program processes applications for approximately 388 diversion eligible first time offenders per year.

Definition of Success: Youth are considered successful if they complete their diversion contract. Those who have their contract revoked are considered unsuccessful.



DETENTION ADVOCACY SERVICE

(Case Management and Legal Services)

Service Providers: Kansas Legal Services

Program Description: The Detention Advocacy Service (DAS) is a legal services program with a case management component designed to address the over-representation of minority and low-income youth in secure detention in the Sedgwick County Juvenile Detention Facility (JDF) and to reduce the likelihood of a juvenile offender spending unnecessary time in detention. These services are offered when the reason for detention presents a reasonable likelihood that this program could expedite release. Kansas Legal Services will provide legal representation at all detention hearing dockets for 100% of youth needing counsel in SFY10 (excluding those who refuse or require separate counsel). In addition, Kansas Legal Services will provide continued legal representation to the conclusion of the legal process to 100% of youth accepted to the Detention Advocacy Service program who do not already have appointed counsel. This includes youth who are detained at JDF and youth who are detained on a juvenile court matter at the Sedgwick County Adult Detention Facility. The goals of continued legal representation are to provide the client with continuity of services and to obtain the best possible outcomes at the detention, adjudication and sentencing stages. Case management and short-term intervention services are offered to approximately 250 youth per year.

Definition of Success (Case Management): Youth is engaged and follows the case plan. Deviations from the alternative to detention may include not complying with court conditions, a bond revocation for a new crime and failed placement.

Definition of Success (Legal Services): The process outcome is to provide continued representation to the conclusion of the legal process to eligible youth accepted for Detention Advocacy case management or brief service investigation (excluding those who refuse or require separate counsel). Youth are successful who do not return to the Juvenile Detention Facility during the adjudicatory process.



FAMILY GROUP CONFERENCING

Service Providers: District Attorney's Office and Episcopal Social Services

Program Description: Family Group Conferencing (FGC) involves the use of a network of skilled facilitators who conduct family group conferences for juveniles charged with a first residential burglary, non-residential burglary, auto burglary or like crimes at the discretion of the district attorney who refers youth to the program. The target population includes juvenile offenders, who have no prior adjudications or diversions, and are charged with an eligible offense in the 18th Judicial District. Services include a facilitated meeting by trained volunteers, the crime victim, the offender and individuals who are a part of the juvenile and victim's support network. The goal is to devise a plan of accountability, restitution, and competency improvement for the youth in order to address the harm that their crime caused to the victim and the community. The district attorney processes applications for approximately 116 juveniles charged with eligible offenses per year.

Definition of Success: Youth are considered successful if they complete their diversion contract. Those who have their contract revoked are considered unsuccessful.



FUNCTIONAL FAMILY THERAPY

Service Provider: Youthville Family Consultation Service

Program Description: The Functional Family Therapy (FFT) program provided by Youthville Family Consultation Service, is a Blueprint for Violence Prevention. FFT is a highly structured family therapy model proven to reduce recidivism for juvenile offenders. The focus is on increasing parental supervision and involvement in a way that matches to the family so the changes will continue over time. The therapy is an average of 12-15 sessions. Referrals will be drawn from Juvenile Diversion, Juvenile Probation, Juvenile Field Services, the Home-Based Supervision Program, JIAC Case Management, and Detention Advocacy Service programs. The target population is juvenile offenders already on some form of supervision in the 18th Judicial District who are at risk of violating the terms of their supervision, or are experiencing a high level of family management problems. Approximately 100 youth and their families will be served per year.

Definition of Success: This is an evidence-based program with objectively defined criteria; therefore, success is clearly defined. Clients are successful when they complete the three phases of FFT. The result is improved functioning and reduced recidivism.



JIAC CASE MANAGEMENT

Service Provider: Kansas Children's Service League

Program Description: This program will provide case management services to youth admitted to the Sedgwick County Juvenile Intake and Assessment Center (JIAC) a second time or more (or high risk youth with one intake), who are at high risk for future delinquency, have no current case management services and reside in the Sedgwick County area. Case management involves assessment of the strengths and challenges of the youth and family, and assistance in accessing services to help resolve the identified problems. Domains to be considered include school performance, social development, family support system, mental health, and any other emergent domain. Approximately 120 youth will be served per year.

Definition of Success: Youth are considered successful if they complete case management by accomplishing the goals in their service plan and participate in home case management services for at least 60 days.



PARENT TRAINING

Service Provider: Kansas Children's Service League

Program Description: The Parent Training program serves children whose preventive need is defined by the situation of their parents. The target population includes parents who are residents of Sedgwick County, have a history of drug and/or alcohol abuse recovery, are currently under correctional supervision referred by one or more of the following referral sources: Sedgwick County Department of Corrections (SCDOC) Adult Field Services Division, SCDOC Adult Residential and Service Center, outpatient substance abuse treatment centers, Youthville Family Consultation Service (FFT), the Sedgwick County Jail, Adult Probation, State Parole, SRS via Youthville, Inc. (or other child welfare contractors) or the client themselves. Parents with children 2-9 years of age receive "*The Incredible Years*" training series, and parents of teens use materials and curriculum from "*Guiding Good Choices*." Additionally, children and youth courses are offered concurrently to the adult courses. Parent Training will be provided to approximately 115 parents per year.

Definition of Success: Participants are successful if they complete a training course, accurately complete homework assignments for 80% of class sessions, miss fewer than two sessions without making them up and score 4 or better on at least 4 of the 5 constructs (or show overall improvement) on the behavioral assessment tool.



TRUANCY PREVENTION PROGRAM

Service Providers: District Attorney's Office and Wichita Public Schools – USD 259

Program Description: The Truancy Prevention Program is a collaborative multi-level/age approach designed to provide a continuum of services to students within the 18th Judicial District who are or are at risk of being truant and prevent further involvement with the juvenile justice system. The core components of this program include: attendance and behavior monitoring, truancy diversion, student support conferences, meaningful incentives for parents/teachers/students, connection to needed services and a leadership position responsible for coordinating services and reporting program outcomes.

- **District Attorney's Office:** The D.A.'s Office provides diversion contracts, both formal and informal, for 280 students that have reached the legal threshold of truancy (13 – 15 years of age). Additionally, 1,400 students ages 16 and older receive truancy informational packets.
- **Wichita Public Schools:** The school district tracks excessive unexcused absences and behavior incidents and make referrals to the District Attorney's Office. They will also supervise co-op interns who will provide one-on-one case management services to elementary students with attendance problems and students that have exhibited early and persistent anti-social behavior and suspension records.

Master's level social workers will facilitate student support conferences for 212 families that have children with attendance and behavior problems. Attendance problems may include unexcused absences and suspensions. Behavior problems may include referrals to the office by teachers and other school staff, in-school suspensions, detentions, or any other behavior that is inappropriate in the school setting. Services will be provided at nine target USD No. 259 elementary schools (Adams, Anderson, Bryant, Chisholm Trail, Franklin, Linwood, Minneha, Pleasant Valley and White). The student support conference will be used to review and confirm the student's attendance status and behavior incidents and determine what can be done to resolve matters that prevent the student from being successful at school. A student support plan will be developed and an agreement will be signed at the conference, stating what

action will be taken to eliminate the problem. An assessment of risk factors will be administered and utilized in developing the student support plan.

After the conference, co-op interns will follow-up with students, parent/guardians, and the school to ensure that proper steps are being taken to increase student success. This will involve going to the home to check on students who are frequently absent. The co-op interns will play a vital role in helping to integrate students back into school with a positive outlook.

The target schools that participate in this program component will also have the opportunity to design an incentive program for parents, students and teachers. Meaningful incentives may include rewards for the homeroom classes with the best attendance, recognition dinners for families whose student has the most improved attendance and behavior, a reward drawing for students with perfect attendance for three months, rewards for decreased student behavior incidents, etc.

Definitions of Success:

- **District Attorney's Office:** Youth are considered successful if they complete their truancy diversion contract. Those who have their contract revoked are considered unsuccessful.

- **Wichita Public Schools:** Youth are considered successful if they achieve the priority goal in the student support plan.



JUVENILE JUSTICE AUTHORITY GRADUATED SANCTIONS PROGRAMS



JUVENILE INTAKE AND ASSESSMENT CENTER (JIAC)

Service Provider: Sedgwick County Department of Corrections

Program Description: JIAC provides a 24-hour a day program serving youth in contact with one of the 22 law enforcement agencies in Sedgwick County. Most participants are brought in by law enforcement because they are juveniles suspected of illegal behaviors. JIAC's goal is to help youth avoid reoffending and getting more deeply entrenched in the juvenile justice system. They achieve this goal by performing intake and assessment activities and by making appropriate referrals for youth and their family.



Sedgwick County...
working for you

JUVENILE CASE MANAGEMENT

Service Provider: Sedgwick County Department of Corrections – Juvenile Field Services Division

Program Description: The Juvenile Case Management program provides supervision, case management and placement to offenders. Offenders served include those in state's custody, and those directly committed to state Juvenile Correction Facilities (JCFs). The offenders may be placed in the community, in residential treatment facilities, and in JCFs. Offenders are supervised according to a level system. Contacts with employers, educators, treatment providers and the offender are components of supervision, as are additional services including electronic monitoring, urinalysis testing, DNA testing and registration, job readiness training, surveillance and independent living services. Emphasis is placed on public safety, preventing future offenses, education and enhancing positive family impact on the offender's behavior.



*Sedgwick County...
working for you*

JUVENILE INTENSIVE SUPERVISION PROGRAM

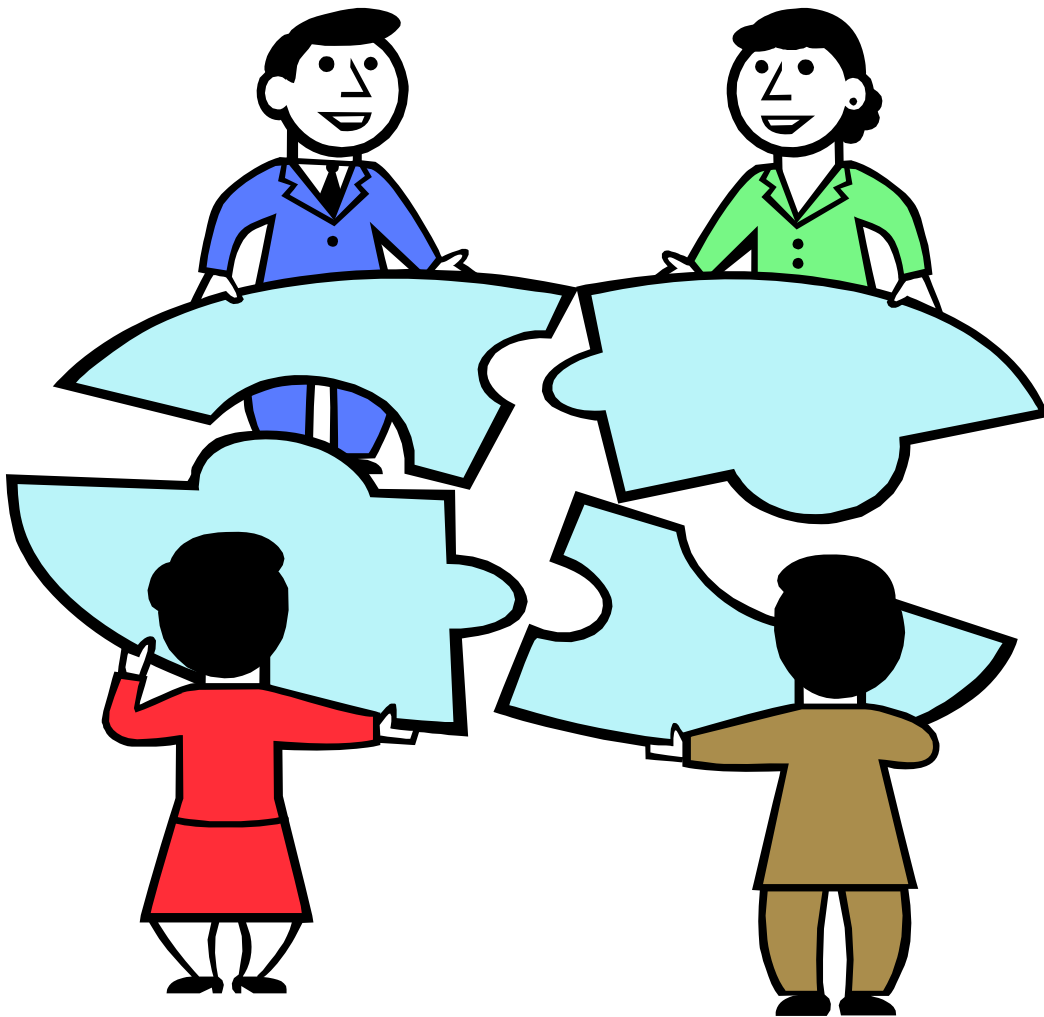
Service Provider: Sedgwick County Department of Corrections – Juvenile Field Services Division.

Program Description: The Juvenile Intensive Supervision Program is an intensive community-based program providing services to offenders at risk of entering state’s custody and to those returning to the community on conditional release from a juvenile correctional facility (JCF). Offenders are supervised according to a level system. Frequent contacts with employers, educators, treatment providers and the offender are characteristic of intensive supervision, as are additional services including electronic monitoring, urinalysis testing, DNA testing and registration, surveillance and job readiness training. Emphasis is placed on public safety, preventing future offenses, education and enhancing positive family impact on the offender’s behavior.



*Sedgwick County...
working for you*

SEDGWICK COUNTY COMMUNITY CRIME PREVENTION PROGRAMS



SEDGWICK COUNTY COMMUNITY CRIME PREVENTION PROGRAMS

History

The Sedgwick County Commission established the Community Crime Prevention Fund in 1998, around the time the jail was being expanded. As the cost figures for the jail expansion began to grow the Commission made a commitment to target local mill levy funds annually to prevent youth from entering the justice system rather than continue to spend millions and millions of dollars to incarcerate individuals. Sedgwick County has made available approximately \$890,000 for crime prevention grants for 2010.

Funds are distributed through a competitive bid process. Agencies submit proposals for programs that address one or more of the priority risk factors. The Sedgwick County Grant Award Committee reviews the proposals and makes recommendations to the Board of County Commissioners. Funded programs are required to establish outcomes and then are monitored regularly to determine their success in achieving the outcomes. In order to ensure the desired crime prevention goals, Sedgwick County has begun over the last few years to target more funding to programs considered evidence-based, i.e. tested, effective programs (such as Blueprint for Violence Prevention Model programs) and to utilize the Risk-Need-Responsivity Model for intervention.



*Sedgwick County...
working for you*

BIG BROTHERS BIG SISTERS

Program Description: Big Brothers Big Sisters pairs at-risk youth with caring adult mentors who spend an average of 3-4 hours per week together. The program screens volunteers and matches them with youth based on the needs of the youth and the abilities and interests of the adult volunteer, as well as parental preferences and program staff capacity. A case manager provides support and monitors the match for its entire life. The program is a Blueprints for Violence Prevention evidence-based model program. Big Brothers Big Sisters has been a prevention grant recipient since 1998. The grant funds serve approximately 220 youth per year.

Definition of Success: A closure is considered successful if it was amicable and mutually agreeable between the youth and mentor; usually the child graduates from high school or doesn't feel the need for a mentor.



BIG BROTHERS BIG SISTERS
of Sedgwick County

CITY WORKS

Service Provider: Youth for Christ

Program Description: Youth for Christ operates the “City Works” job program, a comprehensive, faith-based gang intervention program based on the hugely successful Homeboy Industries model program from California. Calendar year 2009 is the first year the City Works program has been funded by the Sedgwick County Community Crime Prevention Fund. City Works is a local job training and employment program, as well as, a community service work provider targeting at-risk youth who have been in trouble with the law. The mission of the program is to teach young adults the skills needed to become employable and independent, and to place them in meaningful jobs, careers or entrepreneurial enterprises. For calendar year 2009, City Works will also incorporate Motivational Interviewing, an evidence-based practice to improve client engagement and achievement.

Definition of Success: Youth are considered successful if they complete the City Works program without being rearrested and have improved their job skills sufficiently to obtain meaningful employment or return to school (high school, vocational school, or college).



COMMUNITIES IN SCHOOLS

Program Description: Communities In Schools (CIS) operates school sites to connect children to needed resources, thereby improving the likelihood of school success. A CIS site coordinator works to connect families/youth with services, either by bringing in services or making referrals for community-based services. The specific services provided at the school site are based on the presenting problems at the school in question. There is considerable variation from site to site. The Sedgwick County Community Crime Prevention grant funds work at Cooper and Oaklawn Elementary schools, Derby Six Grade Center and Derby High School in the Derby school district; and, Jefferson Elementary in the Wichita school district. Services at Derby High School are funded in cooperation with the Derby School District. CIS is ranked as a promising program by OJJDP Title V. Some of the many services offered at the school site are evidence-based including Life Skills Training and PATHS, which are both Blueprints for Violence Prevention Model Programs. Communities In Schools has received a prevention grant since 1998 and serves approximately 350 youth per year.

Definition of Success: Youth attaining the majority of their goals on their individual service plan by the end of the school year are considered successful.



EDUCATION, TRAINING AND EMPLOYMENT PROGRAM

Service Provider: Kansas School for Effective Learning (KANSEL)

Program Description: The Kansas School for Effective Learning (KANSEL) program includes General Education Diploma (GED) preparation, job training and placement services. The program provides academic instruction, computer skills training, work experience, employment search and job placement assistance to youth who have dropped out of school and are seeking assistance in meeting the requirements of local employment. A JOBSTART component was added four years ago to strengthen occupational skills for specific jobs and training-related support services. JOBSTART was formerly considered an evidence-based program by Communities That Care; it strengthens protective factors of healthy beliefs and clear standards, opportunities to contribute, increased skills, and recognition for contributions. KANSEL has received a prevention grant since 1998 and serves approximately 300 youth per year.

Definition of Success: Youth who have dropped out of high school and attending KANSEL have varying goals. Obtaining a GED is the goal for some youth, while others intend to improve their basic academic skills so they can obtain employment. For FY 2009, KANSEL considered youth successful if they meet their individually identified goal when they exited the program whether that is to obtain a GED, enter postsecondary education or obtain employment.



LEARNING THE ROPES PROGRAM

Service Provider: Higher Ground

Program Description: Higher Ground offers the Learning the Ropes program to intervene with use/abuse of alcohol and illicit drugs. Services include diagnosis and referral for substance abuse, alcohol/drug information, anger management, experiential therapies (wilderness and challenge courses), comprehensive case management services, outpatient treatment, continuing care counseling, family counseling and bilingual services. There are two levels of service funded through this grant. Level 2 services include substance abuse treatment services (8 hours or less per week), and are targeted to youth with substance abuse issues. Level 3 services are intensive versions (9+ hours weekly) of Level 2 services and are designed to treat youth with addictions to substances. The wilderness/ropes course is a confidence-building component experienced by all youth in Level 3 services. No youth receives the wilderness/ropes course component alone. The program's parent training curriculum, Parents Who Care, was previously rated as evidence-based but no longer carries that rating. Higher Ground has received a prevention grant since 1998 and serves approximately 185 people per year (85 youth and 100 parents).

Definition of Success: A successful completion is defined as meeting the following discharge criteria: satisfactorily completed all program assignments, demonstrated an understanding of addictive disease, maintained abstinence for a minimum of 30 days, made satisfactory progress towards treatment goals and no indication of a need for further treatment.



PATHS FOR KIDS

Service Provider: Mental Health Association

Program Description: The Mental Health Association of South Central Kansas' (MHASCK) PATHS for Kids program is designed to promote emotional and social competencies and reduce aggression and acting out behaviors in elementary school aged children. The PATHS curriculum covers five areas (conceptual domains) of social and emotional development including self-control, emotional understanding, self-esteem, peer relations, and interpersonal problem-solving skills. PATHS sessions are approximately 30 minutes in length and are conducted in seven selected Title I schools and one community location. In FY 2009 PATHS was delivered in two separate patterns: 1) integrated into a traditional classroom setting; and 2) more targeted sessions for youth demonstrating problem behavior. Children may be referred for services through Communities In Schools, the Kansas Department of Social and Rehabilitation Services, or COMCARE. Staff providing PATHS services have cross-cultural capacity including the ability to offer the program in Spanish. PATHS is an evidence-based Blueprints for Violence Prevention program. Fiscal year 2005 was the first year of funding for the PATHS for Kids program, which serves approximately 850 youth during the school year.

Definition of Success: Successful completion is defined as attending at least 12 sessions and demonstrating mastery of the skills taught.

The Mental Health Association

of south central kansas



TARGETED OUTREACH PROGRAM

Service Provider: Boys and Girls Club

Program Description: The Boys and Girls Club Targeted Outreach Program (TORP) is an academic program serving youth suspended or expelled from school. Most of the participating youth have been expelled for violating school districts' "zero tolerance" policies; generally the violations include possession of drugs or weapons on school property, fighting, or hitting a school staff person. The goal of TORP is to maintain these students in a school program during their expulsion, increasing the likelihood of eventual return to school and graduation. TORP is classified as a non-accredited private school. TORP works with the schools to insure returning students receive credit for work done while in the program. Once a student returns to school, TORP case managers follow up with the youth for two semesters to assure a smooth transition back to public school. TORP is not considered an evidence-based program. Boys and Girls Club has been a prevention grant recipient since 1998. The program serves approximately 70 youth per year.

Definition of Success: A successful completion is achieved when a youth completes the in-house portion of the program, returns to school and remains in school and participates through the end of the two semester follow-up.



BOYS & GIRLS CLUBS

TEEN INTERVENTION PROGRAM

Service Provider: Episcopal Social Services

Program Description: Episcopal Social Services offers the Teen Intervention Program (TIP) to educate youth about the problems associated with their at-risk behavior. Youth committing minor misdemeanor offenses (including shoplifting) are served by the program. Beginning with Fiscal Year 2010, TIP is targeting moderate risk youth and incorporating Thinking for a Change curriculum. This restorative justice program is offered over a ten week period with content dealing with accountability, issues of community impact, and skill building to avoid future legal problems. TIP utilizes the cognitive behavioral curriculum, Thinking for a Change. The Teen Intervention Program has received a prevention grant off and on since 1998 and serves approximately 200 youth per year.

Definition of Success: Success is defined as successful completion of the ten-week program with mastery of the skills taught.



Board of County Commissioners

David Unruh – 1st District
Tim Norton – 2nd District
Karl Peterjohn – 3rd District
Kelly Parks – 4th District
Gwen Welshimer – 5th District

Team Justice Members

Brian Black
James Burgess
Kathy Dittmer
Pat Hanrahan
Jean Hogan
Karen Langston
Emile McGill
Shawna Mobley
Terri Moses
Ron Paschal
Tom Pletcher
Richard Powell
Stephanie Springer
Marvin Stone Jr.
Riley Williams
Denise Wren

CONTACT INFORMATION

Service Provider	Program	Address	City	State	Zip	Phone
Juvenile Justice Authority Funded Prevention Programs						
District Attorney's Office – Juvenile Div.	D.A.'s Diversion / Immediate Intervention Program	1900 E. Morris	Wichita	KS	67211	660-9777
Kansas Legal Services	Detention Advocacy Service – Case Management Component	700 S. Hydraulic	Wichita	KS	67211	660-5365
Kansas Legal Services	Detention Advocacy Service – Attorney Component	200 N. Broadway, Ste 500	Wichita	KS	67202	265-9681
District Attorney's Office – Juvenile Div.	Family Group Conferencing	1900 E. Morris	Wichita	KS	67211	660-9777
Episcopal Social Services	Family Group Conferencing	1005 E. 2 nd Street	Wichita	KS	67214	269-4160
Youthville Family Consultation Service	Functional Family Therapy	560 N. Exposition	Wichita	KS	67203	264-8317 ext. 222
Kansas Children's Service League	JIAC Case Management	700 S. Hydraulic	Wichita	KS	67211	660-5369
Kansas Children's Service League	Parent Training	1365 N. Custer	Wichita	KS	67203	942-4261
Wichita Public Schools – USD 259	Truancy Prevention Program	3361 N. Arkansas	Wichita	KS	67204	973-3224
District Attorney's Office – Juvenile Div.	Truancy Prevention Program	1900 E. Morris	Wichita	KS	67211	660-9725
Juvenile Justice Authority Funded Graduated Sanctions Programs						
Sedgwick Co. Department of Corrections	Juvenile Intake & Assessment Center (JIAC)	700 S. Hydraulic	Wichita	KS	67211	660-5350
Sedgwick Co. Department of Corrections - Juvenile Field Services	Juvenile Case Management	3803 E. Harry, Ste. 125	Wichita	KS	67218	660-5380
Sedgwick Co. Department of Corrections - Juvenile Field Services	Juvenile Intensive Supervision Program	3803 E. Harry, Ste. 125	Wichita	KS	67218	660-5380
Sedgwick County Community Crime Prevention Programs						
Big Brother Big Sisters of Sedgwick Co.	Big Brothers Big Sisters	310 E. 2 nd Street	Wichita	KS	67202	263-3300
Youth for Christ	City Works	2106 E. Central	Wichita	KS	67201	271-1320
Communities In Schools	Communities In Schools	412 S. Main, Ste. 212	Wichita	KS	67202	973-5110
KANSEL	Education, Training & Employment	2212 E. Central	Wichita	KS	67214	269-9620
Higher Ground	Learning the Ropes	247 N. Market	Wichita	KS	67202	262-2060
Mental Health Association	PATHS for Kids	555 N. Woodlawn, Ste. 3105	Wichita	KS	67208	685-1821
Boys and Girls Club of South Central KS	Targeted Outreach Program	2400 N. Opportunity Drive	Wichita	KS	67219	687-5437
Episcopal Social Services	Teen Intervention Program	1005 E. 2 nd Street	Wichita	KS	67214	269-4160

32

For more information contact Chris Morales at the Sedgwick County Department of Corrections, (316) 660-7019 or cmorales@sedgwick.gov