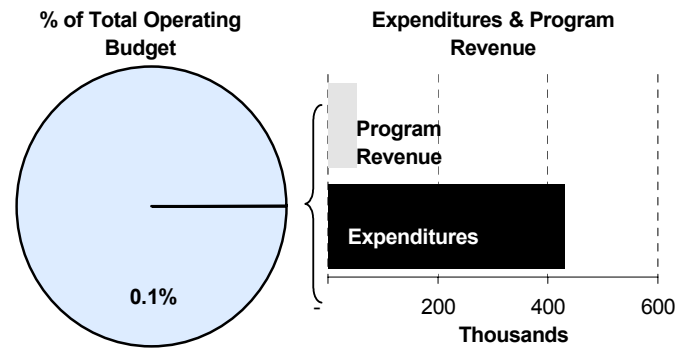
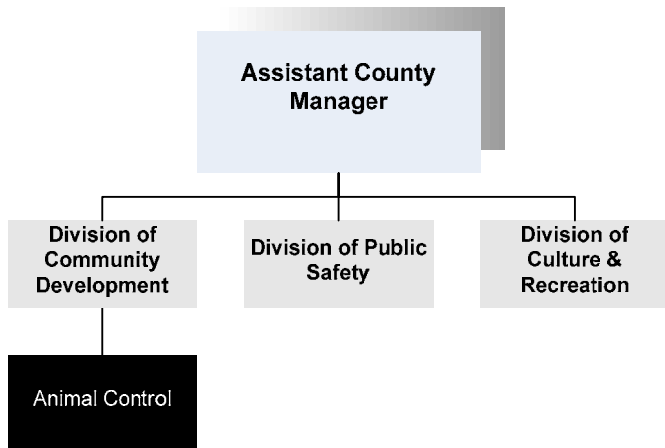




Glen Wiltse
 Director of Code Enforcement
 1015 Stillwell, 1st Floor
 Wichita, Kansas 67213
 316-660-7088
gwiltse@sedgwick.gov

Mission:

- **Protecting the health and safety of the community from dangers and nuisances caused by stray and/or threatening animals, and to ensure the proper care and safety of animals.**



Program Information

The Animal Control Department is responsible for enforcing all Sedgwick County codes concerning the housing and care of animals. Officers also ensure that animals do not pose a health or safety hazard to County residents and that each animal is appropriately vaccinated and licensed as required by law per County Statute. Other enforcement activities of the department include returning loose dogs to their owners, confining strays at the City of Wichita Animal Shelter, returning loose livestock to fenced pastures, removing dead wildlife from highways, investigating instances of animal cruelty and violations of dangerous animal laws.

The Animal Control Officers work closely with the Sedgwick County Sheriffs Department. Animal Control shares in the Sheriff’s concern for public safety and the wellbeing of the neighborhoods they patrol. Animal Control officers have solid working relationships with veterinarians and shelter providers.

Revenue generated by Animal Control comes from the sale of dog licenses and fees for services performed. These revenues are subsequently deposited in the Code Enforcement Office. The small cities served by Animal Control within Sedgwick County include:

- Kechi
- Bentley
- Andale
- Bel Aire
- Garden Plain
- Cheney
- Haysville
- Viola
- Valley Center
- Colwich

The Wichita Animal Shelter, operated by the City of Wichita and located at 3303 N. Hillside, is Sedgwick County’s only full service public animal shelter, and therefore provides animal sheltering services to all of Sedgwick County.



Once an animal is taken to the Wichita Animal Shelter by Sedgwick County Animal Control, that animal will remain in the shelter up to three days. Because the shelter handles over 12,000 animals each year, if a pet is not claimed within that three-day time frame, staff is forced to euthanize the animal. The shelter provides an up-to-date listing of all the animals brought in on its website so that pet owners can easily determine if their pet has been turned in.

Departmental Sustainability Initiatives

In May 2006, Animal Control underwent reorganization, changing from a free-standing department to an operation within the Department of Code Enforcement. This organizational movement allows for a more seamless flow of information and places all County Code Enforcement under one director. Sedgwick County Animal Control is still primarily responsible for issuing citations to owners of animals in violation of Sedgwick County standards, which are processed through the County Court.

The Wichita Animal Shelter offers adoption of stray and surrendered animals. Kansas law requires all animals adopted from animal shelters be spayed or neutered. The fees charged at the animal shelter go toward the spay or neuter of the pet, their rabies vaccination, and any applicable license. The shelter gives all dogs and cats adopted the first in a series of vaccinations for several diseases common to pets.

Department Accomplishments

Sedgwick County Animal Control is a partner in the future development of a county animal response team for the care of animals in a disaster situation. This will benefit our community to secure loose animals during a disaster event.

Sedgwick County has, as has much of the nation, seen an increase in the number of attacks on humans by various types of dogs. To encourage animal safety for the entire community, Animal Control strongly promotes the following tips:

- Ask the owner’s permission before petting a strange dog.
- Stay away from any dog that may be protecting something.
- Avoid dogs that are eating, playing with a toy, tied up, fenced in, or inside a vehicle.
- Do not pet a sleeping dog or sneak up behind him to play.
- Angry dogs try to make themselves look big by puffing up their ears, fur and tail. Scared dogs shrink to the ground with their tails between their legs and ears drawn back.
- If a dog growls or chases you, be still and quiet with your hands at your sides. If you are playing on the ground, lie down with your knees pulled into your stomach and hands over your ears. Avoid eye contact, which is often viewed by dogs as a threat.

Alignment with County Values

- **Accountability -**
Animal Control officers have daily logs that include location, time of arrival and departure, and type of call. This is all reflected in the department’s Key Performance Indicator
- **Commitment -**
Animal Control is committed to the enforcement of adopted codes thru 24/7 operations
- **Open Communication -**
Citizen education about our adopted code is a priority

Goals & Initiatives

- Encourage pet owners to utilize the automated license process
- Respond to citizen requests for service in a timely manner
- Obtain certification for Animal Control Officers

Awards & Accreditations

- University of Columbia-National Cruelty Investigation School Certification
- Code 3 Associates, Levels 1, 2, and 3 Certification
- Humane Investigator Certification
- National Animal Control Association Level 1 Certification
- Humane Society Disaster Animal Sheltering Certification

Budget Adjustments

Changes to the Animal Control 2009 budget reflect increases in benefits costs and a 4.0 percent salary pool for employees. The budget also reflects a 3.0 percent increase in contractals and commodities from the 2008 Adopted budget. The increase in personnel is the result of filling two open positions at higher salaries than what was estimated in the 2008 Adopted budget.

