

SEDGWICK COUNTY
AND
JUVENILE JUSTICE AUTHORITY

**PREVENTION,
INTERVENTION AND
GRADUATED SANCTIONS PROGRAMS**



VISION

We envision Sedgwick County as a community of strong families in which children can develop in a safe and healthy manner to live productive lives.



*Sedgwick County...
working for you*

TABLE OF CONTENTS

JUVENILE JUSTICE AUTHORITY PROGRAMS

History.....	3
--------------	---

PREVENTION PROGRAMS

Truancy Prevention Program	7
JJAC Case Management	10
Family Group Conferencing	12
Parent Training.....	14
Functional Family Therapy.....	16

INTERVENTION/GRADUATED SANCTIONS PROGRAMS

D.A.'s Diversion/Immediate Intervention Program	19
Detention Advocacy Service.....	21
Juvenile Intake and Assessment Center (JJAC).....	22
Juvenile Case Management.....	24
Juvenile Intensive Supervision Program.....	26

SEDGWICK COUNTY COMMUNITY CRIME PREVENTION PROGRAMS

History.....	29
Big Brothers and Big Sisters.....	30
Targeted Outreach Program.....	31
Communities In Schools	32
Teen Intervention Program	33
Learning the Ropes Program	34
GED Preparation, Training and Placement Program.....	35
PATHS for Kids.....	36
Rainbows Early Intervention Project.....	37
ON-TRAC Program	38
Board of County Commission, Team Justice Members and Team Justice Advisory Sub-Committee	39

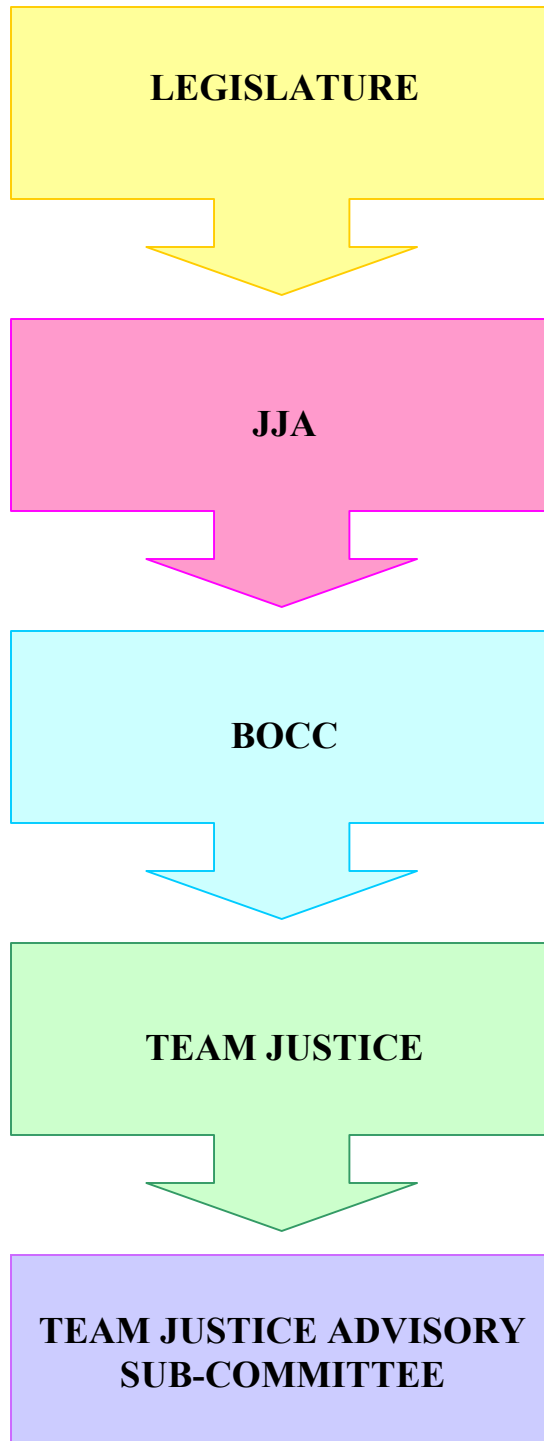
JUVENILE JUSTICE AUTHORITY

History

In 1997, strategic planning for juvenile justice reform was mandated by the state legislature to develop local juvenile justice programs across Kansas. In 1998 the State of Kansas Juvenile Justice Authority (JJA) provided an extensive amount of training, technical assistance and consultation to 29 Community Planning Teams, (representing the 105 counties) that were to create a local strategic plan. Our local team was well supported by key community leaders and included representation from a broad spectrum of our community.

In November of 1998, the Sedgwick County Community Planning Team completed a five-year strategic plan that addressed local juvenile justice needs, ranging from prevention to secure incarceration. In January of 1999, the Sedgwick County Juvenile Corrections Advisory Board (Team Justice) was established as an advisory board to the Sedgwick County Board of County Commissioners (BOCC). The primary mission of Team Justice is to make recommendations to the Commissioners on matters of juvenile justice, and to keep the needs of juvenile offenders in the hearts and minds of the legislators, government officials, and the entire community. Team Justice has an advisory sub-committee that offers recommendations on how delinquency prevention programs and services related to juvenile offenders can best be delivered.

History (cont.)



History (cont.)

In 1999, Team Justice worked with Wichita State University to develop a funding application to implement programs that would address the service gaps identified in the strategic plan. In January of 2000, JJA provided funding to implement several prevention, intervention, and graduated sanctions programs in the 18th Judicial District. JJA currently provides funding for the following local programs:

Prevention:

- Truancy Prevention Program
- JIAC Case Management
- Family Group Conferencing
- Parent Training
- Functional Family Therapy

Intervention:

- D.A.'s Diversion/Immediate Intervention Program
- Detention Advocacy Service
- Juvenile Intake and Assessment Center (JIAC)

Graduated Sanctions:

- Juvenile Case Management
- Juvenile Intensive Supervision Program

JUVENILE JUSTICE AUTHORITY PREVENTION PROGRAMS



TRUANCY PREVENTION PROGRAM

Service Providers: District Attorney's Office, Wichita Public Schools – USD 259 and Communities In Schools.

Program Description: The Truancy Prevention Program is a collaborative multi-level/age approach designed to provide a continuum of services to students within the 18th Judicial District who are or are at risk of being truant. The core components of this program include: attendance monitoring, truancy diversion, attendance conferences, meaningful incentives for parents/teachers/students, connection to needed services and a leadership position that will be responsible for coordinating services and reporting program outcomes.

- **District Attorney's Office:** The D.A.'s Office will provide diversion contracts, both formal and informal, for 250 students that have reached the legal threshold of truancy (13 – 15 years of age). Additionally, 1,400 students ages 16 and older, will receive truancy informational packets.
- **Wichita Public Schools:** The school district will track excessive unexcused absences and provide information to other grant partners so that students are referred for services. USD 259 will supervise co-op interns who will provide one-on-one case management services to targeted students. USD 259 will also take steps to try to increase participation in the Communities That Care survey. Masters level social workers will facilitate 249 attendance conferences with families whose children have attendance problems. Attendance problems may include excessive excused absences due to illness, unexcused absences and suspensions. The attendance conference will be used to review and confirm the student's attendance status and determine what can be done to resolve matters that prevent the student from attending school. An agreement will be signed at the attendance conference stating what action will be taken to eliminate the problem. The idea is to intervene early so that the matter does not end up in court. Services will be provided at nine target USD 259 elementary schools (Adams, Anderson, Bryant, Chisholm Trail, Franklin, Linwood, Minneha, Pleasant Valley and White).

- **Communities In Schools (CIS):** This agency will offer services to 1,500 targeted 6th grade students at Sedgwick County middle schools with the greatest need. Students that are referred to the program will have multiple risk factors and no more than two days of unexcused absences. This is a “brokerage” or “rapid response model” for getting students and families connected to needed services that will help with getting the student to school on a regular basis. A case manager will work with the students for 30 – 45 days to ensure that the student and family are connected to already existing services within the community. Services will be provided at eleven middle schools in Sedgwick County (Brooks, Curtis, Hadley, Hamilton, Haysville, Jardine, Marshall, Mead, Pleasant Valley, Robinson and Valley Center).

COMMUNITIES THAT CARE RISK AND PROTECTIVE FACTORS ADDRESSED BY THIS PROGRAM

Risk Factors:

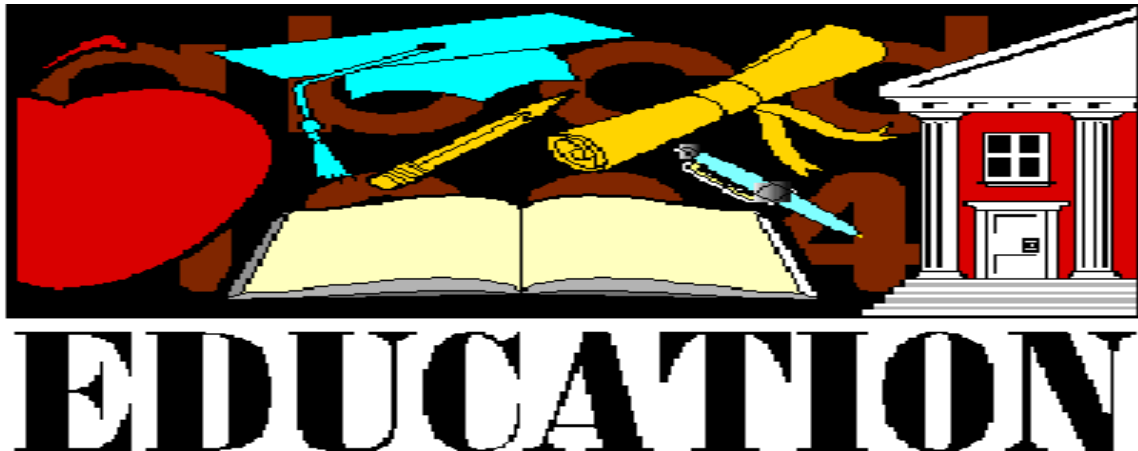
- Lack of Commitment to School
- Academic Failure Beginning in Late Elementary School
- Family Management Problems
- Early and Persistent Anti-social Behavior

Protective Factors:

- Family Attachment
- Rewards for Conventional Involvement
- Opportunities for Positive Involvement

JJA STATE-WIDE OUTCOMES ADDRESSED BY THIS PROGRAM

- Reduce adjudications for serious, violent, and/or chronic crimes among youth age 10 - 17 years old.
- Reduce the number of youth requiring removal from family or community for juvenile offending.
- Increase community participation in addressing local juvenile justice needs.
- Increase the accountability of youth within communities.



JIAC CASE MANAGEMENT

Service Provider: Kansas Children's Service League

Program Description: This program will provide case management services to 191 youth admitted to the Sedgwick County Juvenile Intake and Assessment Center (JIAC) a second time or more, who are at high risk for future delinquency, and have no current case management services. Case management involves assessment of the strengths and challenges of the youth and family, and assistance in accessing services to help resolve the identified problems. Domains to be considered include school performance, social development, family support system, mental health, and any other emergent domain.

COMMUNITIES THAT CARE RISK AND PROTECTIVE FACTORS ADDRESSED BY THIS PROGRAM

Risk Factors:

- Lack of Commitment to School
- Family Management Problems
- Early and Persistent Anti-social Behavior

Protective Factors:

- Family Attachment
- Rewards for Conventional Involvement
- Opportunities for Positive Involvement

JJA STATE-WIDE OUTCOMES ADDRESSED BY THIS PROGRAM

- Reduce adjudications for serious, violent, and/or chronic crimes among youth age 10-17 years old.
- Reduce the number of youth requiring removal from the family or community for juvenile offending.
- Increase community participation in addressing local juvenile justice needs.
- Increase the accountability of youth within communities.



FAMILY GROUP CONFERENCING

Service Providers: District Attorney's Office and Episcopal Social Services

Program Description: Family Group Conferencing (FGC) involves the use of a network of skilled facilitators who will conduct family group conferences for 70 juveniles charged with a first residential burglary, non-residential burglary, auto burglary or like crimes at the discretion of the district attorney who will refer youth to the program. Services include a facilitated meeting by trained volunteers, the crime victim, the offender and individuals who are a part of the juvenile and victim's support network. The goal is to devise a plan of accountability, restitution, and competency improvement for the youth in order to address the harm that their crime caused to the victim and the community.

COMMUNITIES THAT CARE RISK AND PROTECTIVE FACTORS ADDRESSED BY THIS PROGRAM

Risk Factors:

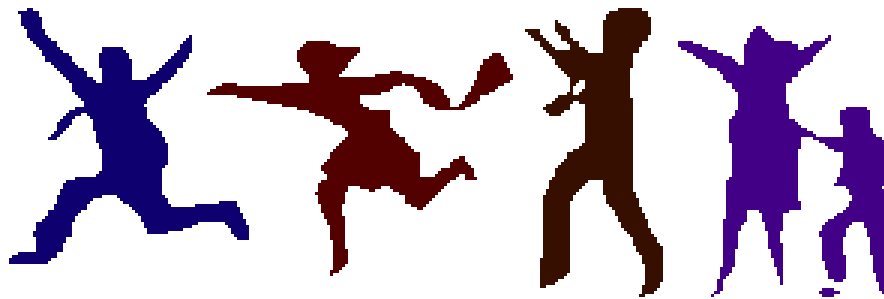
- Family Management Problems
- Early and Persistent Anti-social Behavior

Protective Factors:

- Family Attachment
- Rewards for Conventional Involvement
- Opportunities for Positive Involvement

JJA STATE-WIDE OUTCOMES ADDRESSED BY THIS PROGRAM

- Reduce adjudications for serious, violent, and/or chronic crimes among youth age 10-17 years old.
- Reduce the number of youth requiring removal from the family or community for juvenile offending.
- Increase community participation in addressing local juvenile justice needs.
- Increase the accountability of youth within communities.



PARENT TRAINING

Service Provider: Kansas Children’s Service League

Program Description: The Parent Training program will serve children whose preventive need is defined by the situation of their parents. Referrals will come from the following sources: The Sedgwick County Department of Corrections (SCDOC) Adult Field Services Division, the SCDOC Adult Residential and Service Center, substance abuse treatment centers, Functional Family Therapy, Adult Probation, State Parole, or SRS. Parents with children 2-9 years of age will receive the “Incredible Years Training Series” and parents of teens will use materials and curriculum from “Guiding Good Choices”. Approximately 115 parents are served per year. Additionally, children and youth courses are offered concurrent to the adult courses.

COMMUNITIES THAT CARE RISK AND PROTECTIVE FACTORS ADDRESSED BY THIS PROGRAM

Risk Factors:

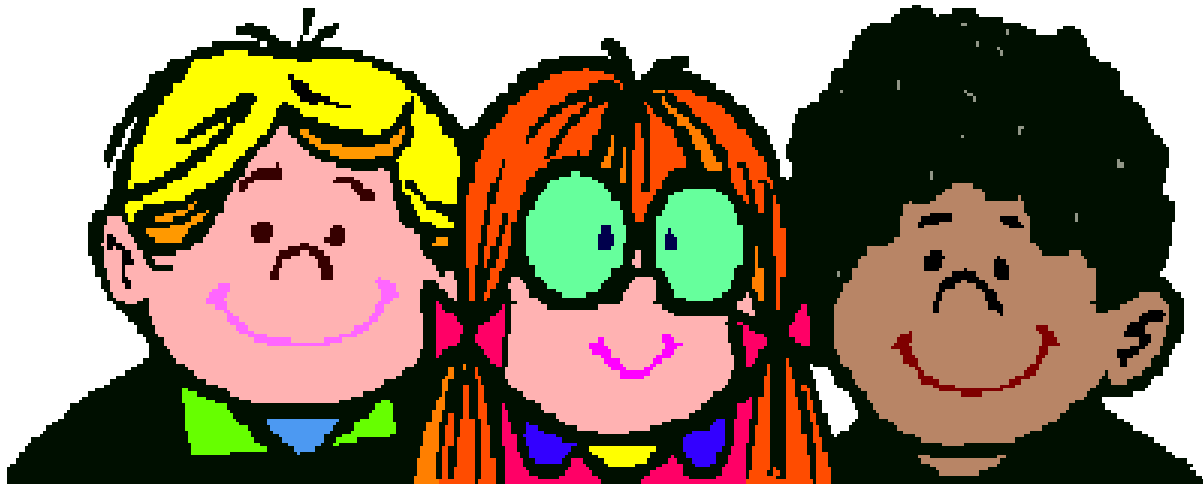
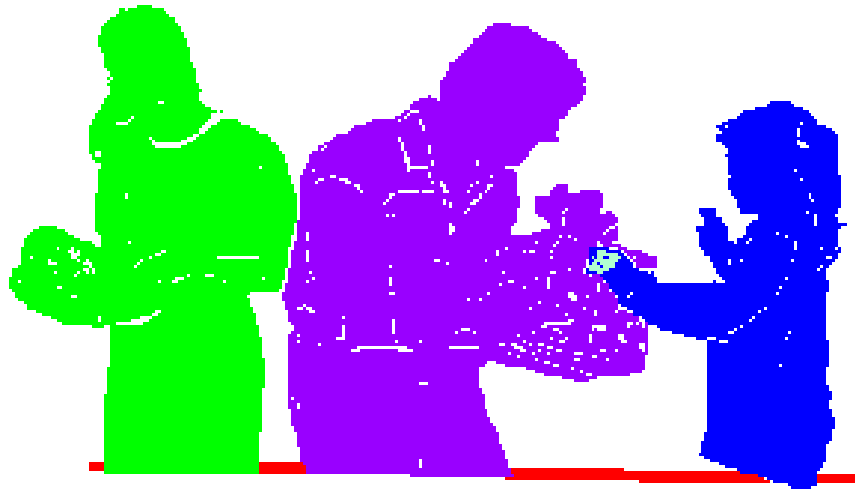
- Family Management Problems
- Early and Persistent Anti-social Behavior

Protective Factors:

- Family Attachment
- Rewards for Conventional Involvement
- Opportunities for Positive Involvement

JJA STATE-WIDE OUTCOMES ADDRESSED BY THIS PROGRAM

- Reduced adjudications for serious, violent, and/or chronic crimes among youth age 10-17 years old.
- Reduce the number of youth requiring removal from the family or community for juvenile offending.
- Increase community participation in addressing local juvenile justice needs.



FUNCTIONAL FAMILY THERAPY

Service Provider: Family Consultation Service

Program Description: The Functional Family Therapy (FFT) program is a Blueprint for Violence Prevention. FFT reflects core theoretical principles, which represent the primary focus (family), and a model that understands both positive and negative behavior as representations of family relational systems (functional). The focus is on increasing parental supervision and involvement in a way that matches to the family so the changes will continue over time. The therapy is an average of 12 - 15 sessions, conducted in the home or on an outpatient basis. The model is very structured and calls for complete fidelity of treatment to produce the high levels of success. Referrals will be drawn from Juvenile Diversion, Juvenile Probation, Juvenile Field Services, the Home-Based Supervision Program and those being served by JIAC Case Management and Detention Advocacy Service programs. This program serves 115 youth/families per year.

COMMUNITIES THAT CARE RISK AND PROTECTIVE FACTORS ADDRESSED BY THIS PROGRAM

Risk Factors:

- Family Management Problems
- Early and Persistent Anti-social Behavior

Protective Factors:

- Family Attachment
- Rewards for Conventional Involvement
- Opportunities for Positive Involvement

JJA STATE-WIDE OUTCOMES ADDRESSED BY THIS PROGRAM

- Reduced adjudications for serious, violent, and/or chronic crimes among youth age 10-17 years old.
- Reduce the number of youth requiring removal from the family or community for juvenile offending.
- Increase the accountability of youth within communities.



**JUVENILE JUSTICE AUTHORITY
INTERVENTION/GRADUATED SANCTIONS
PROGRAMS**



D.A.'s DIVERSION/IMMEDIATE INTERVENTION PROGRAM

Service Provider: District Attorney's Office.

Program Description: The District Attorney's Diversion/Immediate Intervention Program is designed to give an opportunity to certain youthful offenders to accept responsibility for their crimes; to receive rehabilitative services and sanctions; to provide restitution or other restorative measures to victims; to alleviate the stigma and lasting effects of a formal adjudication; and to preserve scarce judicial resources. This program serves approximately 300 youth per year.

COMMUNITIES THAT CARE RISK AND PROTECTIVE FACTORS ADDRESSED BY THIS PROGRAM

Risk Factors:

- Family Management Problems
- Early and Persistent Anti-social Behavior

Protective Factors:

- Family Attachment
- Rewards for Conventional Involvement
- Opportunities for Positive Involvement



JJA STATE-WIDE OUTCOMES ADDRESSED BY THIS PROGRAM

- Reduce adjudications for serious, violent, and/or chronic crimes among youth age 10-17 years old.
- Reduce the number of youth requiring removal from family or community for juvenile offending.
- Increase community participation in addressing local juvenile justice needs.
- Increase the accountability of youth within communities.



DETENTION ADVOCACY SERVICE

Service Providers: Kansas Legal Services

Program Description: The Detention Advocacy Service is a case management program designed to address the over-representation of minority and low-income youth in secure detention and reduce the likelihood of a juvenile offender spending unnecessary time in detention. Case management services are offered when the reason for detention presents a reasonable likelihood that this program could expedite release. Case management services are offered to 250 youth.

COMMUNITIES THAT CARE RISK AND PROTECTIVE FACTORS ADDRESSED BY THIS PROGRAM

Risk Factors:

- Family Management Problems
- Early and Persistent Anti-social Behavior

Protective Factors:

- Family Attachment
- Rewards for Conventional Involvement
- Opportunities for Positive Involvement

JJA STATE-WIDE OUTCOMES ADDRESSED BY THIS PROGRAM

- Reduce adjudications for serious, violent, and/or chronic crimes among youth age 10-17 years old.

JUVENILE INTAKE AND ASSESSMENT CENTER (JIAC)

Service Provider: Sedgwick County Department of Corrections

Program Description: JIAC provides a 24-hour a day program serving youth in contact with one of the 22 law enforcement agencies in Sedgwick County. Most participants are brought in by law enforcement because they are juveniles suspected of illegal behaviors. JIAC's goal is to help youth avoid reoffending and getting more deeply entrenched in the juvenile justice system. They achieve this goal by performing intake and assessment activities and by making appropriate referrals for the youth's family.

COMMUNITIES THAT CARE RISK AND PROTECTIVE FACTORS ADDRESSED BY THIS PROGRAM

Risk Factors:

- Family Management Problems
- Early and Persistent Anti-social Behavior

Protective Factors:

- Family Attachment
- Rewards for Conventional Involvement
- Opportunities for Positive Involvement

JJA STATE-WIDE OUTCOMES ADDRESSED BY THIS PROGRAM

- Reduced adjudications for serious, violent, and/or chronic crimes among youth age 10-17 years old.
- Reduce the number of youth requiring removal from the family or community for juvenile offending.
- Juveniles leaving juvenile correctional facilities will demonstrate a higher level of knowledge, skills and confidence necessary for successful community reintegration.
- Increase the accountability of youth within communities.



JUVENILE CASE MANAGEMENT

Service Provider: Sedgwick County Department of Corrections – Juvenile Field Services Division.

Program Description: The Juvenile Case Management program provides supervision, case management and treatment facility placement to offenders. Offenders served include those in state’s custody, and those directly committed to state Juvenile Correction Facilities (JCFs). Following release from treatment facilities or JCFs, the offenders are supervised according to a level system in the community. Contacts with employers, educators, treatment providers and the offender are components of supervision, as are additional services including electronic monitoring, urinalysis testing, DNA testing/registration, job readiness training, surveillance and independent living services. Emphasis is placed on public safety, preventing future offenses, education and enhancing positive family impact on the offender’s behavior.

COMMUNITIES THAT CARE RISK AND PROTECTIVE FACTORS ADDRESSED BY THIS PROGRAM

Risk Factors:

- Family Management Problems
- Early and Persistent Anti-social Behavior

Protective Factors:

- Family Attachment
- Rewards for Conventional Involvement
- Opportunities for Positive Involvement

JJA STATE-WIDE OUTCOMES ADDRESSED BY THIS PROGRAM

- Reduced adjudications for serious, violent, and/or chronic crimes among youth age 10-17 years old.
- Reduce the number of youth requiring removal from the family or community for juvenile offending.
- Juveniles leaving juvenile correctional facilities will demonstrate a higher level of knowledge, skills and confidence necessary for successful community reintegration.
- Increase the accountability of youth within communities.



JUVENILE INTENSIVE SUPERVISION PROGRAM

Service Provider: Sedgwick County Department of Corrections – Juvenile Field Services Division.

Program Description: The Juvenile Intensive Supervision Program is an intensive community-based program providing services to offenders at risk of entering state’s custody and to those returning to the community on conditional release from a juvenile correctional facility (JCF). Offenders are supervised according to a level system. Frequent contacts with employers, educators, treatment providers and the offender are characteristic of intensive supervision, as are additional services including electronic monitoring, urinalysis testing, DNA testing and registration, surveillance and job readiness training. Emphasis is placed on public safety, preventing future offenses, education and enhancing positive family impact on the offender’s behavior.

COMMUNITIES THAT CARE RISK AND PROTECTIVE FACTORS ADDRESSED BY THIS PROGRAM

Risk Factors:

- Family Management Problems
- Early and Persistent Anti-social Behavior

Protective Factors:

- Family Attachment
- Rewards for Conventional Involvement
- Opportunities for Positive Involvement

JJA STATE-WIDE OUTCOMES ADDRESSED BY THIS PROGRAM

- Reduced adjudications for serious, violent, and/or chronic crimes among youth age 10-17 years old.
- Reduce the number of youth requiring removal from the family or community for juvenile offending.
- Juveniles leaving juvenile correctional facilities will demonstrate a higher level of knowledge, skills and confidence necessary for successful community reintegration.
- Increase the accountability of youth within communities.



**SEDGWICK COUNTY
COMMUNITY CRIME PREVENTION PROGRAMS**



History

The Sedgwick County Commission established the Community Crime Prevention Fund around the time the jail was being expanded. As the cost figures for the jail expansion began to grow the Commission made a commitment to target approximately \$1 million in funds annually to prevent youth from entering the justice system rather than continue to spend millions and millions of dollars to incarcerate individuals.

Funds are distributed through a competitive bid process. Agencies submit proposals for programs that address one or more of the priority risk factors. The Sedgwick County Grant Award Committee reviews the proposals and makes recommendations to the Board of County Commissioners. Funded programs are required to establish outcomes and then are monitored regularly to determine their success in achieving the outcomes. In order to ensure the desired crime prevention goals, Sedgwick County has begun over the last few years to target more funding to programs considered evidence-based, i.e. tested, effective programs (either Blueprint Models or Communities That Care model programs).

BIG BROTHERS AND BIG SISTERS

Program Description: Big Brothers and Big Sisters is an evidence-based program that matches at-risk youth with caring adult mentors. Big Brothers and Big Sisters has been a prevention grant recipient since 1998. The program serves approximately 250 youth per year.

Risk Factors:

- Lack of Commitment to School
- Early and Persistent Anti-social Behavior
- Academic Failure Beginning in Late Elementary School

Protective Factors:

- Rewards for Conventional Involvement
- Opportunities for Positive Involvement



BIG BROTHERS BIG SISTERS
of Sedgwick County

TARGETED OUTREACH PROGRAM

Service Provider: Boys and Girls Club

Program Description: Boys and Girls Club operates the Targeted Outreach Program, which is an educational program for youth who have been suspended or expelled from school. The program primarily targets youth expelled for a full 186 days under school district “no tolerance” policies. Boys and Girls Club has been a prevention grant recipient since 1998. The program serves approximately 55 youth per year.

Risk Factors:

- Lack of Commitment to School
- Academic Failure Beginning in Late Elementary School

Protective Factors:

- Rewards for Conventional Involvement
- Opportunities for Positive Involvement



BOYS & GIRLS CLUBS

COMMUNITIES IN SCHOOLS

Program Description: Communities In Schools provides collaborative, school-based services for at-risk youth. The prevention grant serves youth at Cooper, Jefferson and Oaklawn Elementary Schools and Derby Sixth Grade Center. Communities In Schools works to connect students with community services. Communities In Schools has received a prevention grant since 1998 and serves approximately 185 youth per year.

Risk Factors:

- Lack of Commitment to School
- Early and Persistent Anti-social Behavior
- Academic Failure Beginning in Late Elementary School
- Family Management Problems

Protective Factors:

- Family Attachment
- Rewards for Conventional Involvement
- Opportunities for Positive Involvement



TEEN INTERVENTION PROGRAM

Service Provider: Episcopal Social Services

Program Description: The Teen Intervention Program is a diversion program for youth arrested for the first time for shoplifting and other minor misdemeanors. The Teen Intervention Program has received a prevention grant off and on since 1998 and serves approximately 250 youth per year.

Risk Factors:

- Lack of Commitment to School
- Early and Persistent Anti-social Behavior
- Family Management Problems

Protective Factors:

- Family Attachment
- Rewards for Conventional Involvement



LEARNING THE ROPES PROGRAM

Service Provider: Higher Ground

Program Description: The Learning the Ropes program provides both substance abuse prevention and primary treatment services to adolescents in an unconventional treatment model that includes experiential components. Additionally, the “Parents Who Care” curriculum is utilized for parent groups. Higher Ground has received a prevention grant since 1998 and serves approximately 100 people per year (75 youth and 25 parents).

Risk Factors:

- Early and Persistent Anti-social Behavior
- Family Management Problems

Protective Factors:

- Family Attachment
- Rewards for Conventional Involvement
- Opportunities for Positive Involvement



HIGHER
GROUND

GED PREPARATION, TRAINING AND PLACEMENT PROGRAM

Service Provider: Kansas School for Effective Learning (KANSEL)

Program Description: The KANSEL program serves adolescents that have dropped out of high school; assisting the youth to obtain a GED or diploma and secure employment. KANSEL's program includes the evidence-based JOBSTART program. KANSEL has received a prevention grant since 1998 and serves approximately 250 youth per year.

Risk Factor:

- Lack of Commitment to School

Protective Factor:

- Rewards for Conventional Involvement



PATHS FOR KIDS

Service Provider: Mental Health Association

Program Description: PATHS is an evidence-based conflict-resolution skill building program. Mental Health Association staff provide the training in seven elementary schools in Wichita. Fiscal year 2005 was the first year of funding for the PATHS for Kids program, which serves approximately 600 youth during the school year.

Risk Factors:

- Lack of Commitment to School
- Early and Persistent Anti-social Behavior

Protective Factors:

- Rewards for Conventional Involvement
- Opportunities for Positive Involvement



RAINBOWS EARLY INTERVENTION PROJECT

Service Provider: Rainbows United

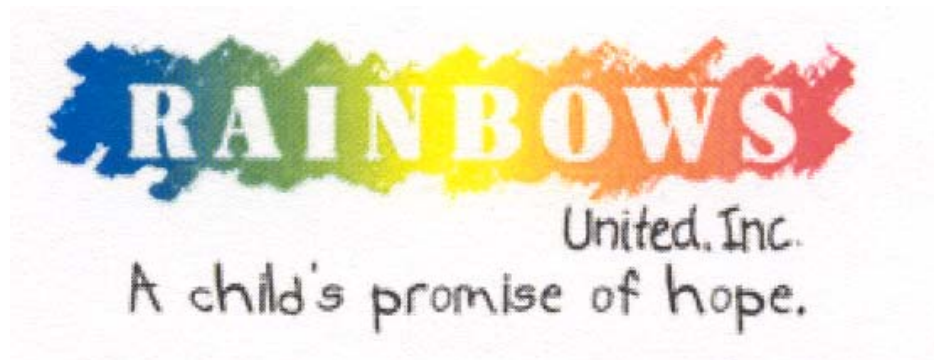
Program Description: The Rainbows Early Intervention Project targets family management and early anti-social behavioral problems by using “The Incredible Years” curriculum for a series of parent training classes. The Rainbows United program began in 2003 and serves approximately 42 families per year.

Risk Factors:

- Early and Persistent Anti-social Behavior
- Family Management Problems

Protective Factor:

- Family Attachment



ON-TRAC PROGRAM

Service Provider: Wichita Family Services Institute

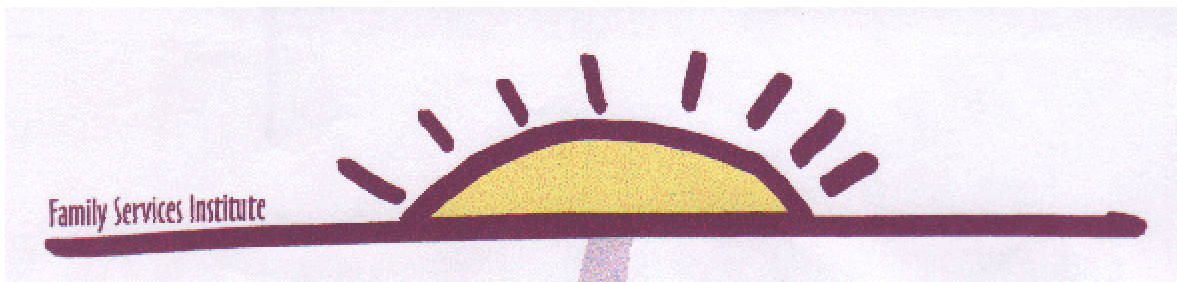
Program Description: The ON-TRAC program offers classes and mentoring to enhance opportunities for teens ages 12 to 17 demonstrating problem behaviors. The program has received a prevention grant since 2000 and serves approximately 85 youth per year.

Risk Factors:

- Lack of Commitment to School
- Early and Persistent Anti-social Behavior
- Academic Failure Beginning in Late Elementary School
- Family Management Problems

Protective Factors:

- Family Attachment
- Rewards for Conventional Involvement
- Opportunities for Positive Involvement



Board of County Commissioners

David Unruh – 1st District
Tim R. Norton – 2nd District
Tom Winters – 3rd District
Lucy Burtnett – 4th District
Ben Sciortino – 5th District

Team Justice Members

Pat Beckemeyer	Jeannine Lane
Donald Betts	Karen Langston
James Burgess	Shawna Mobley
Marilyn Cook	Terri Moses
John Green	Ron Paschal
Pat Hanrahan	Ralph Teran
Jean Hogan	Ron Terzian
Kathleen Kaiser	

Team Justice Advisory Sub-Committee

Sue Castille	Jeannine Lane
Suzanne Chapel-Miller	Ron Paschal
Deborah Donaldson	Terri Patterson
Bev Dunning	Sarah Robinson
John Green	Ron Soft
Pat Hanrahan	Marla Sutton
Kathleen Kaiser	Larry Ternes
Tom Kimbrell	

For more information, contact Chris Morales at the Sedgwick County Department of Corrections. (316) 660-7003 or cmorales@sedgwick.gov