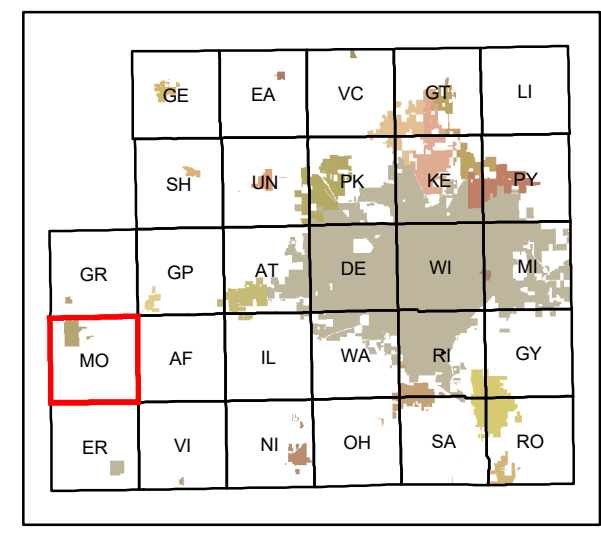


Morton Township 2019

Sedgwick County, Kansas

Legend

- | | | | |
|-----------------------------|------------------------|--------------|----------------|
| | County Boundary | | City Limits |
| | Railroads | | Andale |
| | Hospitals | | Bel Aire |
| | Emergency Sirens | | Bentley |
| | Cemeteries | | Cheney |
| | Sections | | Clearwater |
| | Townships | | Colwich |
| | Parks | | Derby |
| | Golf Courses | | Eastborough |
| | Airports | | Garden Plain |
| Schools | | | Goddard |
| | Elementary School | | Haysville |
| | K-8 | | Kechi |
| | Middle School | | Maize |
| | High School | | Mount Hope |
| | College | | Mulvane |
| | Vocational | | Park City |
| | Special School | | Sedgwick |
| | Valley Center | | Viola |
| Emergency Facilities | | | Wichita |
| | EMS | Roads | |
| | Sheriff Station | | Major Highways |
| | Wichita Police Station | | Highways |
| | Other Police Station | | Ramp |
| | County Fire Station | | Arterial |
| | Wichita Fire Station | | Minor Roads |
| | Other Fire Station | | |
| | Volunteer Fire Station | | |



Date: 6/10/2019

It is understood that the Sedgwick County GIS, Division of Information and Operations, has no indication or reason to believe that there are inaccuracies in information incorporated in the base map.

The GIS personnel make no warranty or representation, either expressed or implied, with respect to the information or the data displayed.

