

# Regional Forensic Science Center

***Mission:*** To provide the highest quality medical-legal and forensic laboratory services in support of the criminal justice system, in a timely manner, for the citizens of Sedgwick County.

**Timothy P. Rohrig, Ph.D.**  
Director

1109 N. Minneapolis  
Wichita, KS 67214  
316.660.4800

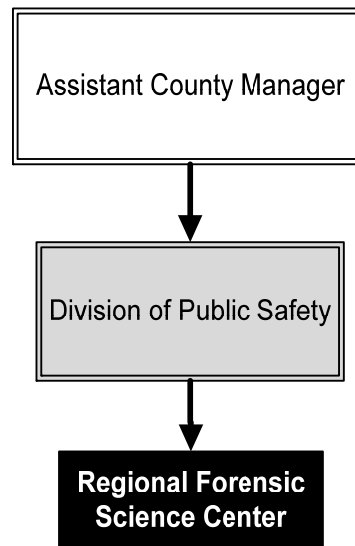
[timothy.rohrig@sedgwick.gov](mailto:timothy.rohrig@sedgwick.gov)

## Overview

The Regional Forensic Science Center (RFSC) provides pathologist-directed autopsies to determine cause and manner of death of those individuals who die and come under the jurisdiction (violent and/or questionable deaths) of the District Coroner. In addition, the Center functions as the “crime laboratory” for all law enforcement agencies within Sedgwick County.

The RFSC interacts daily with all law enforcement operations in the County, as well as the rest of the criminal justice system. In addition, the Center provides autopsy services to several other Kansas counties on a “cost recovery fee” basis.

Employed at the RFSC are several nationally recognized scientists who annually respond to thousands of subpoenas and provide hundreds of hours of testimony in courts across the United States.



## Strategic Goals:

- Provide timely, accurate and well-documented postmortem examinations and forensic science analyses utilizing the most current practices and technologies
- Provide professional, unbiased and unimpeachable interpretation of forensic results and provide the same in expert testimony provided to the courts
- Interact with law enforcement and other criminal justice agencies to facilitate the expeditious adjudication of criminal cases

## Highlights

- Reported 78 CODIS (Combined DNA Index System Database) offender hit notifications during 2013 to report suspected perpetrators of crimes
- Received approximately 2,785 subpoenas during 2013 resulting in 335 hours of testimony
- Performed approximately 800 autopsies and worked more than 4,600 lab cases during 2013
- Achieved ASCLD/LAB-International status following a year-long evaluation of the Center's operations



# Accomplishments and Priorities

## Accomplishments

The RFSC maintains dual national accreditations from the National Association of Medical Examiners (NAME) and the American Society of Crime Laboratory Directors/Laboratory Accreditation Board (ASCLD/LAB). The accreditations document that during and after a rigorous review of the Center's professional practices, it is meeting or exceeding the performance criteria for the profession. This provides the County assurances that the Center is meeting acceptable professional standards, thus lowering the risk of the miscarriage of justice (wrongfully accused or convicted persons) and the inherent liabilities that may be associated with litigation arising out of such claims.

In 2014, the RFSC achieved ASCLD/LAB-International status after a year-long evaluation of the laboratories' management system, technical procedures and practices, personnel qualifications, quality assurance program and facilities. At the time it was awarded, the RFSC was one of only 308 laboratories in the world that met the rigorous accreditation standards and one of just a few facilities with the additional NAME accreditation.

## Priorities

The RFSC's number one priority is fulfillment of its mission statement: to provide the highest quality medical-legal and forensic laboratory services in support of the criminal justice system, in a timely manner, for the citizens of Sedgwick County.

Several of the Center's priorities align with Sedgwick County's values:

- **Accountability**—Provide accurate and thorough medical-legal death investigations and provide accurate and incontestable forensic scientific analyses of evidence submitted to the Center to aid in the detection and adjudication of criminal activity.
- **Commitment**—Strive to maintain state-of-the-art scientific technologies and to adhere to and exceed generally accepted practices in the forensic and legal communities.
- **Honesty**—Present clear and accurate forensic reports and courtroom testimony.
- **Open Communication**—Provide appropriate discovery in criminal proceedings and abide by the intent and letter of the Open Records Act, promote communication with all appropriate parties in the judicial system and assure effective dialogue between the Center and families of the deceased, funeral homes, health care providers and other community partners.
- **Professionalism and Respect**—Project the image of high integrity and competency, while showing compassion to those individuals that the Center has to communicate unfortunate news.



## Significant Budget Adjustments

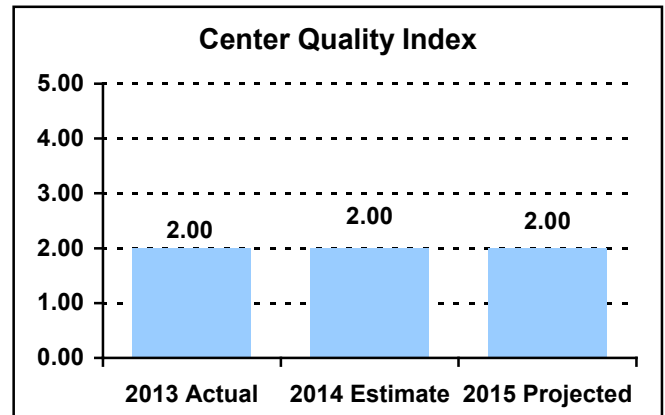
Changes to the Regional Forensic Science Center's 2015 adopted budget include the addition of a 1.0 FTE Forensic Scientist II at a cost of \$62,230 and additional contractual services and commodities funding in the amount of \$35,000 to address increasing supply and service agreement costs.

**PERFORMANCE MEASURE HIGHLIGHTS**

The following chart illustrates the Key Performance Indicator (KPI) of the Regional Forensic Science Center.

**Center Quality Index-**

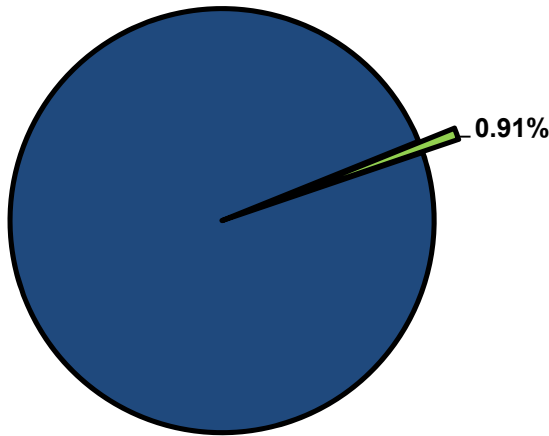
- The Center Quality Index is determined by a point system which rates the timeliness and quality of forensic services provided.



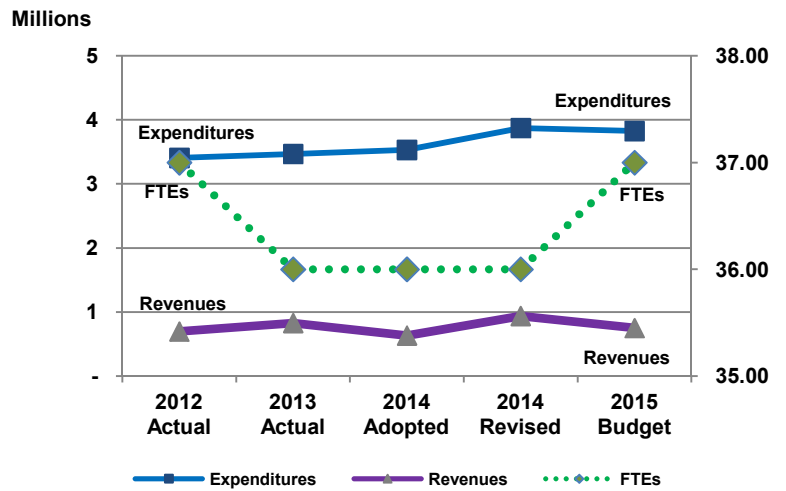
Department Performance Measures	2013 Actual	2014 Est.	2015 Proj.
<b>Goal: To provide quality medicolegal and forensic laboratory services in a timely fashion.</b>			
Center quality index (KPI)	2.00	2.00	2.00
Forensic laboratories service score	2.00	1.75	1.50
Pathology division service score	2.00	2.00	2.00
Biology turn-around-time	6 weeks	6 weeks	6 weeks
Criminalistics turn-around-time	26 weeks	32 weeks	32 weeks
Toxicology turn-around-time	7 weeks	9 weeks	12 weeks
Pathology turn-around-time (percent of cases filed in 90 days)	75%	80%	80%
<b>Goal: Provide professional and unimpeachable interpretation of forensic results and expert testimony in court</b>			
Pathology quality assurance index	3.20	3.50	4.00
Laboratories quality assurance index	4.00	4.00	4.00

**Departmental Graphical Summary**

**Regional Forensic Science Center**  
Percent of Total County Operating Budget



**Expenditures, Program Revenue & FTEs**  
All Operating Funds



**Budget Summary by Category**

	2012 Actual	2013 Actual	2014 Adopted	2014 Revised	2015 Budget	Amount Chg '14 Rev.-'15	% Chg '14 Rev.-'15
<b>Expenditures</b>							
Personnel	2,659,632	2,775,118	2,971,628	2,998,725	3,101,019	102,294	3.41%
Contractual Services	265,338	303,205	267,183	323,269	305,805	(17,464)	-5.40%
Debt Service	-	-	-	-	-	-	-
Commodities	260,505	277,470	294,088	402,991	398,810	(4,181)	-1.04%
Capital Improvements	40,798	(1,000)	-	-	-	-	-
Capital Equipment	179,967	63,833	-	148,429	20,000	(128,429)	-86.53%
Interfund Transfers	-	50,000	-	-	-	-	-
<b>Total Expenditures</b>	<b>3,406,240</b>	<b>3,468,627</b>	<b>3,532,899</b>	<b>3,873,415</b>	<b>3,825,634</b>	<b>(47,781)</b>	<b>-1.23%</b>
<b>Revenues</b>							
Tax Revenues	-	-	-	-	-	-	-
Licenses and Permits	-	-	-	-	-	-	-
Intergovernmental	153,732	192,620	-	305,403	100,000	(205,403)	-67.26%
Charges for Services	535,754	634,269	625,940	625,940	647,415	21,475	3.43%
All Other Revenue	6,253	1,438	6,624	6,624	2,681	(3,943)	-59.52%
<b>Total Revenues</b>	<b>695,739</b>	<b>828,327</b>	<b>632,564</b>	<b>937,967</b>	<b>750,096</b>	<b>(187,871)</b>	<b>-20.03%</b>
<b>Full-Time Equivalents (FTEs)</b>							
Property Tax Funded	36.00	35.00	36.00	36.00	37.00	1.00	2.78%
Non-Property Tax Funded	1.00	1.00	-	-	-	-	-
<b>Total FTEs</b>	<b>37.00</b>	<b>36.00</b>	<b>36.00</b>	<b>36.00</b>	<b>37.00</b>	<b>1.00</b>	<b>2.78%</b>

**Budget Summary by Fund**

Fund	2012 Actual	2013 Actual	2014 Adopted	2014 Revised	2015 Budget	Amount Chg '14 Rev.-'15	% Chg '14 Rev.-'15
General Fund	3,141,869	3,356,148	3,532,899	3,577,833	3,725,634	147,801	4.13%
JAG Grants	195,246	80,767	-	172,919	-	(172,919)	-100.00%
Stimulus Funds	269	-	-	-	-	-	-
Coroner Grants	68,856	31,711	-	122,663	100,000	(22,663)	-18.48%
<b>Total Expenditures</b>	<b>3,406,240</b>	<b>3,468,627</b>	<b>3,532,899</b>	<b>3,873,415</b>	<b>3,825,634</b>	<b>(47,781)</b>	<b>-1.23%</b>

**Significant Budget Adjustments from Prior Year Revised Budget**

	Expenditures	Revenues	FTEs
Addition of 1.0 FTE Forensic Scientist II position	62,230		1.00
Addition to commodities budget due to increased supply costs	15,000		
Addition to contractual services budget due to increased service agreement costs	20,000		

**Total**      97,230      -      1.00

**Budget Summary by Program**

Program	Fund	2012 Actual	2013 Actual	2014 Adopted	2014 Revised	2015 Budget	% Chg '14 Rev.-'15	2015 FTEs
RFSC Administration	110	194,451	227,631	370,711	361,651	359,305	-0.65%	3.00
Biology/DNA Laboratory	110	390,775	399,206	421,826	402,865	430,385	6.83%	4.00
Lab Management	110	167,313	158,940	71,495	96,993	70,750	-27.06%	1.00
Toxicology	110	554,225	662,370	626,655	645,558	682,659	5.75%	6.00
Criminalistics Laboratory	110	539,441	507,467	504,954	488,658	589,109	20.56%	7.00
Autopsy	110	624,939	707,882	949,087	973,773	981,343	0.78%	8.00
Pathology Management	110	145,023	160,457	8,104	29,350	-	-100.00%	-
Investigation	110	379,200	389,475	388,707	390,736	417,123	6.75%	5.00
Quality Assurance	110	146,502	142,720	191,360	188,249	194,959	3.56%	3.00
RFSC Other Grants	Multi.	264,371	112,478	-	295,582	100,000	-66.17%	-
<b>Total</b>		<b>3,406,240</b>	<b>3,468,627</b>	<b>3,532,899</b>	<b>3,873,415</b>	<b>3,825,634</b>	<b>-1.23%</b>	<b>37.00</b>

**Personnel Summary By Fund**

Position Titles	Fund	Grade	Budgeted Compensation Comparison			FTE Comparison		
			2014 Adopted	2014 Revised	2015 Budget	2014 Adopted	2014 Revised	2015 Budget
Coroner/Medical Examiner	110	CONTRACT	183,912	187,591	187,591	1.00	1.00	1.00
Deputy Coroner	110	CONTRACT	293,727	306,702	306,702	2.00	2.00	2.00
Director Forensic Science Center	110	CONTRACT	154,820	161,012	161,012	1.00	1.00	1.00
Biology/DNA Laboratory Manger	110	GRADE132	68,192	71,813	71,813	1.00	1.00	1.00
Chief Medical Investigator	110	GRADE132	51,172	67,991	67,991	1.00	1.00	1.00
Chief of Criminalistics	110	GRADE132	68,000	70,234	70,234	1.00	1.00	1.00
Forensic Administrator	110	GRADE132	65,837	52,499	52,499	1.00	1.00	1.00
FSC Quality Assurance & Compl.Mgr.	110	GRADE132	57,062	58,937	58,937	1.00	1.00	1.00
Toxicology Laboratory Manager	110	GRADE132	52,107	53,819	53,819	1.00	1.00	1.00
Forensic Scientist III	110	GRADE130	157,186	162,866	162,866	3.00	3.00	3.00
Forensic Scientist II	110	GRADE129	180,815	183,829	229,173	4.00	4.00	5.00
Forensic Scientist III	110	GRADE129	101,181	105,530	105,530	2.00	2.00	2.00
Forensic Scientist I	110	GRADE127	165,510	171,794	171,794	4.00	4.00	4.00
Medical Investigator	110	GRADE126	187,717	182,675	182,675	4.00	4.00	4.00
Forensic Pathology Assistant	110	GRADE121	106,911	109,253	109,253	3.00	3.00	3.00
Administrative Assistant	110	GRADE120	28,933	29,710	29,710	1.00	1.00	1.00
Medical Transcriptionist	110	GRADE120	39,821	40,720	40,720	1.00	1.00	1.00
Evidence Technician	110	GRADE119	34,364	35,144	35,144	1.00	1.00	1.00
Laboratory Technician	110	GRADE119	27,175	28,069	28,069	1.00	1.00	1.00
Office Specialist	110	GRADE117	55,692	56,391	56,391	2.00	2.00	2.00
<b>Subtotal</b>					<b>2,181,923</b>			
Add:								
Budgeted Personnel Savings					-			
Compensation Adjustments					68,117			
Overtime/On Call/Holiday Pay					43,588			
Benefits					807,390			
<b>Total Personnel Budget</b>					<b>3,101,019</b>	<b>36.00</b>	<b>36.00</b>	<b>37.00</b>

**• Regional Forensic Science Center Administration**

Forensic Administration provides technical and operational oversight for the Pathology and Forensic Laboratory Division of the Regional Forensic Science Center. The Director, Forensic Administrator and Receptionist provide direction and support to the operational areas of the Center. The procurement of goods and services, revenue collection, safety and security and administration of grants and contracts are managed through this program. The program also serves as the point of contact and liaison to the public, other County departments and the criminal justice system and handling all Kansas Open Records Act and Discovery requests.

<b>Fund(s): County General Fund 110</b>							
<b>Expenditures</b>	<b>2012 Actual</b>	<b>2013 Actual</b>	<b>2014 Adopted</b>	<b>2014 Revised</b>	<b>2015 Budget</b>	<b>Amnt. Chg. '14 - '15</b>	<b>% Chg. '14 - '15</b>
Personnel	156,068	174,036	339,951	340,591	337,523	(3,068)	-0.9%
Contractual Services	22,131	46,073	23,000	13,000	13,130	130	1.0%
Debt Service	-	-	-	-	-	-	-
Commodities	7,439	7,523	7,760	8,060	8,652	592	7.3%
Capital Improvements	8,814	-	-	-	-	-	-
Capital Equipment	-	-	-	-	-	-	-
Interfund Transfers	-	-	-	-	-	-	-
<b>Total Expenditures</b>	<b>194,451</b>	<b>227,631</b>	<b>370,711</b>	<b>361,651</b>	<b>359,305</b>	<b>(2,346)</b>	<b>-0.6%</b>
<b>Revenues</b>							
Taxes	-	-	-	-	-	-	-
Intergovernmental	-	-	-	-	-	-	-
Charges For Service	-	-	-	-	-	-	-
All Other Revenue	2,463	-	2,603	2,603	2,681	78	3.0%
<b>Total Revenues</b>	<b>2,463</b>	<b>-</b>	<b>2,603</b>	<b>2,603</b>	<b>2,681</b>	<b>78</b>	<b>3.0%</b>
<b>Full-Time Equivalents (FTEs)</b>	<b>1.50</b>	<b>3.00</b>	<b>3.00</b>	<b>3.00</b>	<b>3.00</b>	<b>-</b>	<b>-</b>

**• Biology/DNA Laboratory**

Biology/DNA Laboratory performs scientific analysis to detect and identify various biological fluids in support of criminal investigations. The Laboratory develops DNA profiles and maintains the local DNA database and searches the national DNA database (CODIS). This analysis aids in the identification or elimination of individuals suspected of committing a crime.

<b>Fund(s): County General Fund 110</b>							
<b>Expenditures</b>	<b>2012 Actual</b>	<b>2013 Actual</b>	<b>2014 Adopted</b>	<b>2014 Revised</b>	<b>2015 Budget</b>	<b>Amnt. Chg. '14 - '15</b>	<b>% Chg. '14 - '15</b>
Personnel	286,733	317,336	303,110	304,612	315,943	11,331	3.7%
Contractual Services	25,085	28,287	27,216	10,716	31,541	20,825	194.3%
Debt Service	-	-	-	-	-	-	-
Commodities	78,957	53,584	91,500	87,537	82,901	(4,636)	-5.3%
Capital Improvements	-	-	-	-	-	-	-
Capital Equipment	-	-	-	-	-	-	-
Interfund Transfers	-	-	-	-	-	-	-
<b>Total Expenditures</b>	<b>390,775</b>	<b>399,206</b>	<b>421,826</b>	<b>402,865</b>	<b>430,385</b>	<b>27,520</b>	<b>6.8%</b>
<b>Revenues</b>							
Taxes	-	-	-	-	-	-	-
Intergovernmental	-	-	-	-	-	-	-
Charges For Service	-	1,500	-	-	-	-	-
All Other Revenue	-	-	-	-	-	-	-
<b>Total Revenues</b>	<b>-</b>	<b>1,500</b>	<b>-</b>	<b>-</b>	<b>-</b>	<b>-</b>	<b>-</b>
<b>Full-Time Equivalents (FTEs)</b>	<b>4.30</b>	<b>4.20</b>	<b>4.00</b>	<b>4.00</b>	<b>4.00</b>	<b>-</b>	<b>-</b>

### • Laboratory Management

Laboratory Management provides support for the Forensic Lab Division of the Center and funds required continuing education for the Center scientists. Revenue consists of restitution paid by defendants convicted of a crime that involved casework performed by a RFSC laboratory.

#### Fund(s): County General Fund 110

Expenditures	2012 Actual	2013 Actual	2014 Adopted	2014 Revised	2015 Budget	Amnt. Chg. '14 - '15	% Chg. '14 - '15
Personnel	139,481	123,754	37,275	38,414	37,043	(1,371)	-3.6%
Contractual Services	23,522	25,604	24,550	33,622	24,506	(9,116)	-27.1%
Debt Service	-	-	-	-	-	-	-
Commodities	4,310	9,581	9,670	24,956	9,201	(15,755)	-63.1%
Capital Improvements	-	-	-	-	-	-	-
Capital Equipment	-	-	-	-	-	-	-
Interfund Transfers	-	-	-	-	-	-	-
<b>Total Expenditures</b>	<b>167,313</b>	<b>158,940</b>	<b>71,495</b>	<b>96,993</b>	<b>70,750</b>	<b>(26,243)</b>	<b>-27.1%</b>
<b>Revenues</b>							
Taxes	-	-	-	-	-	-	-
Intergovernmental	-	-	-	-	-	-	-
Charges For Service	66,758	95,974	70,137	70,137	77,000	6,863	9.8%
All Other Revenue	3,790	1,438	4,021	4,021	-	(4,021)	-100.0%
<b>Total Revenues</b>	<b>70,548</b>	<b>97,412</b>	<b>74,158</b>	<b>74,158</b>	<b>77,000</b>	<b>2,842</b>	<b>3.8%</b>
<b>Full-Time Equivalents (FTEs)</b>	<b>2.50</b>	<b>2.40</b>	<b>1.00</b>	<b>1.00</b>	<b>1.00</b>	<b>-</b>	<b>-</b>

### • Toxicology

The Toxicology Laboratory supports the District Coroner and local law enforcement. It provides complete postmortem studies, drug testing in sexual assault cases, and alcohol and drug testing in driving under the influence (DUI) cases. Revenue is comprised of fees collected for postmortem forensic testing for out of county cases.

#### Fund(s): County General Fund 110

Expenditures	2012 Actual	2013 Actual	2014 Adopted	2014 Revised	2015 Budget	Amnt. Chg. '14 - '15	% Chg. '14 - '15
Personnel	353,426	401,595	421,357	394,576	411,118	16,542	4.2%
Contractual Services	77,330	76,211	77,091	133,918	117,579	(16,339)	-12.2%
Debt Service	-	-	-	-	-	-	-
Commodities	123,075	134,563	128,207	117,064	153,962	36,898	31.5%
Capital Improvements	-	-	-	-	-	-	-
Capital Equipment	394	-	-	-	-	-	-
Interfund Transfers	-	50,000	-	-	-	-	-
<b>Total Expenditures</b>	<b>554,225</b>	<b>662,370</b>	<b>626,655</b>	<b>645,558</b>	<b>682,659</b>	<b>37,101</b>	<b>5.7%</b>
<b>Revenues</b>							
Taxes	-	-	-	-	-	-	-
Intergovernmental	-	-	-	-	-	-	-
Charges For Service	25,567	31,671	27,124	27,124	27,000	(124)	-0.5%
All Other Revenue	-	-	-	-	-	-	-
<b>Total Revenues</b>	<b>25,567</b>	<b>31,671</b>	<b>27,124</b>	<b>27,124</b>	<b>27,000</b>	<b>(124)</b>	<b>-0.5%</b>
<b>Full-Time Equivalents (FTEs)</b>	<b>4.55</b>	<b>5.45</b>	<b>6.00</b>	<b>6.00</b>	<b>6.00</b>	<b>-</b>	<b>-</b>



### • Criminalistics Laboratory

The Criminalistics Laboratory performs physical and/or chemical analysis of evidence collected by law enforcement from crime scenes. The types of casework encompass illicit drug identification, firearms, arson/fire debris, and open containers of alcohol.

#### Fund(s): County General Fund 110

Expenditures	2012 Actual	2013 Actual	2014 Adopted	2014 Revised	2015 Budget	Amnt. Chg. '14 - '15	% Chg. '14 - '15
Personnel	500,877	452,304	459,954	462,258	531,764	69,507	15.0%
Contractual Services	21,580	22,102	24,000	3,100	28,777	25,677	828.3%
Debt Service	-	-	-	-	-	-	-
Commodities	16,984	33,061	21,000	23,300	28,568	5,268	22.6%
Capital Improvements	-	-	-	-	-	-	-
Capital Equipment	-	-	-	-	-	-	-
Interfund Transfers	-	-	-	-	-	-	-
<b>Total Expenditures</b>	<b>539,441</b>	<b>507,467</b>	<b>504,954</b>	<b>488,658</b>	<b>589,109</b>	<b>100,452</b>	<b>20.6%</b>
<b>Revenues</b>							
Taxes	-	-	-	-	-	-	-
Intergovernmental	-	-	-	-	-	-	-
Charges For Service	425	350	451	451	350	(101)	-22.4%
All Other Revenue	-	-	-	-	-	-	-
<b>Total Revenues</b>	<b>425</b>	<b>350</b>	<b>451</b>	<b>451</b>	<b>350</b>	<b>(101)</b>	<b>-22.4%</b>
<b>Full-Time Equivalents (FTEs)</b>	<b>7.20</b>	<b>6.10</b>	<b>6.00</b>	<b>6.00</b>	<b>7.00</b>	<b>1.00</b>	<b>16.7%</b>

### • Autopsy

Forensic Pathology services are provided by Forensic Pathologists and Forensic Pathology Assistants who perform autopsies and external examinations necessary for the determination of cause and manner of death. The service is also responsible for the scientific identification of the decedent. In 2015, Pathology Management was absorbed into the Autopsy program to be more efficient in providing pathology services by combining all forensic pathology services in one cost center. Revenue consists of fees for autopsy services provided to other counties and cremation permits.

#### Fund(s): County General Fund 110

Expenditures	2012 Actual	2013 Actual	2014 Adopted	2014 Revised	2015 Budget	Amnt. Chg. '14 - '15	% Chg. '14 - '15
Personnel	532,604	595,543	854,919	829,402	877,457	48,055	5.8%
Contractual Services	63,995	85,137	61,217	107,024	70,860	(36,164)	-33.8%
Debt Service	-	-	-	-	-	-	-
Commodities	28,340	27,203	32,951	37,348	33,026	(4,322)	-11.6%
Capital Improvements	-	-	-	-	-	-	-
Capital Equipment	-	-	-	-	-	-	-
Interfund Transfers	-	-	-	-	-	-	-
<b>Total Expenditures</b>	<b>624,939</b>	<b>707,882</b>	<b>949,087</b>	<b>973,773</b>	<b>981,343</b>	<b>7,569</b>	<b>0.8%</b>
<b>Revenues</b>							
Taxes	-	-	-	-	-	-	-
Intergovernmental	-	-	-	-	-	-	-
Charges For Service	369,924	426,295	461,301	461,301	543,065	81,764	17.7%
All Other Revenue	-	-	-	-	-	-	-
<b>Total Revenues</b>	<b>369,924</b>	<b>426,295</b>	<b>461,301</b>	<b>461,301</b>	<b>543,065</b>	<b>81,764</b>	<b>17.7%</b>
<b>Full-Time Equivalents (FTEs)</b>	<b>7.80</b>	<b>5.90</b>	<b>8.00</b>	<b>8.00</b>	<b>8.00</b>	<b>-</b>	<b>-</b>

**• Pathology Management**

Pathology Management funds required continuing education for the Pathology Division. The program also interacts with tissue donation organizations and processes cremation permits. In 2015, this program will be combined with Autopsy to increase efficiency in providing pathology services.

**Fund(s): County General Fund 110**

Expenditures	2012 Actual	2013 Actual	2014 Adopted	2014 Revised	2015 Budget	Amnt. Chg. '14 - '15	% Chg. '14 - '15
Personnel	135,436	155,534	-	26,500	-	(26,500)	-100.0%
Contractual Services	9,365	3,511	7,104	2,531	-	(2,531)	-100.0%
Debt Service	-	-	-	-	-	-	-
Commodities	222	1,412	1,000	319	-	(319)	-100.0%
Capital Improvements	-	-	-	-	-	-	-
Capital Equipment	-	-	-	-	-	-	-
Interfund Transfers	-	-	-	-	-	-	-
<b>Total Expenditures</b>	<b>145,023</b>	<b>160,457</b>	<b>8,104</b>	<b>29,350</b>	<b>-</b>	<b>(29,350)</b>	<b>-100.0%</b>
<b>Revenues</b>							
Taxes	-	-	-	-	-	-	-
Intergovernmental	-	-	-	-	-	-	-
Charges For Service	73,080	78,480	66,927	66,927	-	(66,927)	-100.0%
All Other Revenue	-	-	-	-	-	-	-
<b>Total Revenues</b>	<b>73,080</b>	<b>78,480</b>	<b>66,927</b>	<b>66,927</b>	<b>-</b>	<b>(66,927)</b>	<b>-100.0%</b>
<b>Full-Time Equivalents (FTEs)</b>	<b>0.95</b>	<b>0.85</b>	<b>-</b>	<b>-</b>	<b>-</b>	<b>-</b>	<b>-</b>

**• Investigation**

Forensic Medical Investigations triages to all deaths reported to the Coroner Division. They will conduct a thorough and timely investigation of each case accepted to aid in the determination of cause and manner of death. In order to provide this service, a Medical Investigator is on duty 24 hours a day, 365 days a year. Medical Investigations assists with the identification of decedents, and expends considerable time and effort in searching background information by contacting multiple agencies and individuals in attempts to locate next-of-kin or other responsible parties to mitigate the cost of indigent burials.

**Fund(s): County General Fund 110**

Expenditures	2012 Actual	2013 Actual	2014 Adopted	2014 Revised	2015 Budget	Amnt. Chg. '14 - '15	% Chg. '14 - '15
Personnel	372,338	381,042	381,182	383,024	410,591	27,567	7.2%
Contractual Services	6,382	7,183	6,525	5,323	5,032	(291)	-5.5%
Debt Service	-	-	-	-	-	-	-
Commodities	480	1,249	1,000	2,390	1,500	(890)	-37.2%
Capital Improvements	-	-	-	-	-	-	-
Capital Equipment	-	-	-	-	-	-	-
Interfund Transfers	-	-	-	-	-	-	-
<b>Total Expenditures</b>	<b>379,200</b>	<b>389,475</b>	<b>388,707</b>	<b>390,736</b>	<b>417,123</b>	<b>26,387</b>	<b>6.8%</b>
<b>Revenues</b>							
Taxes	-	-	-	-	-	-	-
Intergovernmental	-	-	-	-	-	-	-
Charges For Service	-	-	-	-	-	-	-
All Other Revenue	-	-	-	-	-	-	-
<b>Total Revenues</b>	<b>-</b>	<b>-</b>	<b>-</b>	<b>-</b>	<b>-</b>	<b>-</b>	<b>-</b>
<b>Full-Time Equivalents (FTEs)</b>	<b>5.20</b>	<b>5.10</b>	<b>5.00</b>	<b>5.00</b>	<b>5.00</b>	<b>-</b>	<b>-</b>

### • Quality Assurance

Quality Assurance coordinates and manages the activities in all laboratory sections relating to quality assurance and assists the Pathology Division in their quality assurance practices. These activities include instrument calibrations and documentation, proficiency testing programs, development and implementation of quality assurance and quality control standard operating procedures, coordination of quality audits and maintenance of personnel training records. The Quality Assurance section also houses the Evidence Section of Forensic Laboratory, which manages all criminal evidence submitted to the Center.

#### Fund(s): County General Fund 110

Expenditures	2012 Actual	2013 Actual	2014 Adopted	2014 Revised	2015 Budget	Amnt. Chg. '14 - '15	% Chg. '14 - '15
Personnel	129,855	133,601	173,880	174,712	179,579	4,867	2.8%
Contractual Services	15,949	9,098	16,480	12,936	14,380	1,444	11.2%
Debt Service	-	-	-	-	-	-	-
Commodities	698	21	1,000	600	1,000	400	66.7%
Capital Improvements	-	-	-	-	-	-	-
Capital Equipment	-	-	-	-	-	-	-
Interfund Transfers	-	-	-	-	-	-	-
<b>Total Expenditures</b>	<b>146,502</b>	<b>142,720</b>	<b>191,360</b>	<b>188,249</b>	<b>194,959</b>	<b>6,710</b>	<b>3.6%</b>
<b>Revenues</b>							
Taxes	-	-	-	-	-	-	-
Intergovernmental	-	-	-	-	-	-	-
Charges For Service	-	-	-	-	-	-	-
All Other Revenue	-	-	-	-	-	-	-
<b>Total Revenues</b>	<b>-</b>	<b>-</b>	<b>-</b>	<b>-</b>	<b>-</b>	<b>-</b>	<b>-</b>
<b>Full-Time Equivalents (FTEs)</b>	<b>2.00</b>	<b>2.00</b>	<b>3.00</b>	<b>3.00</b>	<b>3.00</b>	<b>-</b>	<b>-</b>

### • Regional Forensic Science Center Other Grants

During the past few years, the Regional Forensic Science Center has received a variety of grants from various entities in the state, primarily for the acquisition of forensic equipment. These grants include Coverdell Forensic Science Improvement and Justice Assistance Grants (JAG). These grants have been used to supplement professional/technical staff training and equipment acquisition to enhance capacity and/ or capability. The funds at times have been used to support the cost of scientific staff.

#### Fund(s): Coroner - Grants 256 / JAG Grants 263 / Stimulus Funds 277

Expenditures	2012 Actual	2013 Actual	2014 Adopted	2014 Revised	2015 Budget	Amnt. Chg. '14 - '15	% Chg. '14 - '15
Personnel	52,815	40,372	-	44,636	-	(44,636)	-100.0%
Contractual Services	-	-	-	1,100	-	(1,100)	-100.0%
Debt Service	-	-	-	-	-	-	-
Commodities	-	9,272	-	101,417	80,000	(21,417)	-21.1%
Capital Improvements	31,984	(1,000)	-	-	-	-	-
Capital Equipment	179,572	63,833	-	148,429	20,000	(128,429)	-86.5%
Interfund Transfers	-	-	-	-	-	-	-
<b>Total Expenditures</b>	<b>264,371</b>	<b>112,478</b>	<b>-</b>	<b>295,582</b>	<b>100,000</b>	<b>(195,582)</b>	<b>-66.2%</b>
<b>Revenues</b>							
Taxes	-	-	-	-	-	-	-
Intergovernmental	153,732	192,620	-	305,403	100,000	(205,403)	-67.3%
Charges For Service	-	-	-	-	-	-	-
All Other Revenue	-	-	-	-	-	-	-
<b>Total Revenues</b>	<b>153,732</b>	<b>192,620</b>	<b>-</b>	<b>305,403</b>	<b>100,000</b>	<b>(205,403)</b>	<b>-67.3%</b>
<b>Full-Time Equivalents (FTEs)</b>	<b>1.00</b>	<b>1.00</b>	<b>-</b>	<b>-</b>	<b>-</b>	<b>-</b>	<b>-</b>