

# Noxious Weeds

**Mission:** To control and eradicate noxious weeds on all property within Sedgwick County.

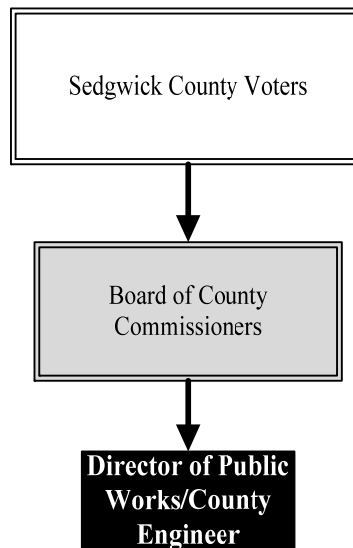
**Mark Furry**  
**Director of Noxious Weeds**

901 Stillwell  
 Wichita, Kansas 67217  
 316-660-7464

[mark.furry@sedgwick.gov](mailto:mark.furry@sedgwick.gov)

## Overview

Noxious Weeds controls and eradicates noxious weeds in Sedgwick County, as required by K.S.A. 2-1318. Control of noxious weeds on County property and right of ways is the Department's primary responsibility. The Department also operates a vegetation management program, suppressing perennial grasses and undesirable vegetation infesting shoulders and ditches. Each staff member holds a Commercial Applicator license from the Kansas Department of Agriculture and enforces State noxious weed laws and helps citizens fulfill their responsibilities through education on effective techniques and products. A variety of equipment, including truck and ATV mounted spray units, is used for efficient and environmentally responsible treatment of infestations.



## Strategic Goals:

- Fully treat all noxious weed infestations on all County properties and right of way
- Control, with the objective of eradication, all *Sericea Lespedeza* in Sedgwick County
- To increase public awareness of noxious weeds

## Highlights

- Habitat restoration along Dry Creek and Cowskin Creek for endangered species
- Vegetation management along approximately 25 miles of bike paths in the County
- Erosion control planting along bridges after repair and replacement
- Spray common weeds on over 600 miles of County owned roads and right of way to help reduce mowing cycles



# Accomplishments and Priorities

## Accomplishments

The Noxious Weeds Department puts much thought into the purchase of herbicides and equipment each year as the Department reviews existing programs to evaluate the need, desired results and costs involved. Noxious Weeds also works to improve efficiencies and mitigate environmental impact by constantly looking at potential application techniques, improved equipment, and materials that work better, faster, are safe to the environment and more cost effective.

The Noxious Weeds Department also provides vegetation management for Public Works projects. This includes planting and treatment after road and bridge project completion to maximize a weed free environment; planting native grasses along revitalized stream banks to help control erosion; and mowing, treatment and planting along County maintained bike paths to ensure public safety and enjoyment.

## Priorities

The Noxious Weeds Department focuses on increasing crop production by reducing weed competition thus increasing the profit and sustainability of the County's agriculture partners. As an example, surveys in the early 1900's indicated that the bindweed acreage in Kansas was doubling about every five years. At that rate, bindweed would have covered seven million acres of cropland by 1964 had there been no organized control program. The initial Kansas Noxious Weed law, passed in 1937, and follow-on legislation has helped protect Kansas and Sedgwick County cropland and rangeland from such invasive noxious weeds as the field bindweed, musk thistle and the newest threat, Sericea Lespedeza. Another priority is to continue the sale of discounted herbicides for noxious weeds. This program allows landowners to purchase herbicides at a reduced rate to treat their own property and is important to the control of noxious weeds on private lands. Additional priorities include working with landowners on custom prescribed vegetation management plans and public educational messages.



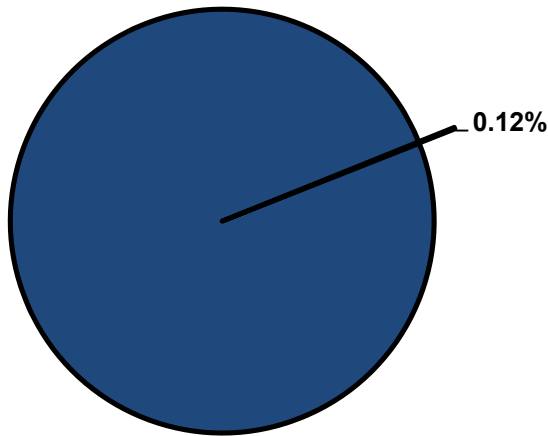
## Significant Budget Adjustments

There are no significant adjustments to Noxious Weeds' 2015 budget.

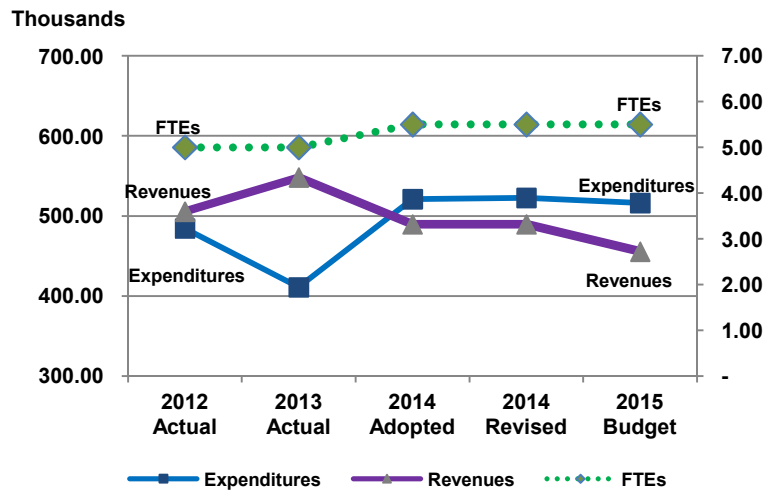


**Departmental Graphical Summary**

**Noxious Weeds**  
Percent of Total County Operating Budget



**Expenditures, Program Revenue & FTEs**  
All Operating Funds



**Budget Summary by Category**

	2012 Actual	2013 Actual	2014 Adopted	2014 Revised	2015 Budget	Amount Chg '14 Rev.-'15	% Chg '14 Rev.-'15
<b>Expenditures</b>							
Personnel	293,905	242,087	317,042	318,456	321,226	2,770	0.87%
Contractual Services	93,309	101,831	103,883	103,883	94,302	(9,581)	-9.22%
Debt Service	-	-	-	-	-	-	-
Commodities	97,140	66,948	100,162	100,162	100,629	467	0.47%
Capital Improvements	-	-	-	-	-	-	-
Capital Equipment	-	-	-	-	-	-	-
Interfund Transfers	-	-	-	-	-	-	-
<b>Total Expenditures</b>	<b>484,355</b>	<b>410,866</b>	<b>521,087</b>	<b>522,501</b>	<b>516,157</b>	<b>(6,344)</b>	<b>-1.21%</b>
<b>Revenues</b>							
Tax Revenues	430,772	495,454	411,134	411,134	400,390	(10,744)	-2.61%
Licenses and Permits	-	-	-	-	-	-	-
Intergovernmental	-	-	-	-	-	-	-
Charges for Services	74,672	52,382	78,444	78,444	54,755	(23,689)	-30.20%
All Other Revenue	-	290	-	-	292	292	
<b>Total Revenues</b>	<b>505,444</b>	<b>548,126</b>	<b>489,578</b>	<b>489,578</b>	<b>455,437</b>	<b>(34,141)</b>	<b>-6.97%</b>
<b>Full-Time Equivalents (FTEs)</b>							
Property Tax Funded	5.00	5.00	5.50	5.50	5.50	-	0.00%
Non-Property Tax Funded	-	-	-	-	-	-	-
<b>Total FTEs</b>	<b>5.00</b>	<b>5.00</b>	<b>5.50</b>	<b>5.50</b>	<b>5.50</b>	<b>-</b>	<b>0.00%</b>

**Budget Summary by Fund**

Fund	2012 Actual	2013 Actual	2014 Adopted	2014 Revised	2015 Budget	Amount Chg '14 Rev.-'15	% Chg '14 Rev.-'15
Noxious Weeds	484,355	410,866	521,087	522,501	516,157	(6,344)	-1.21%
<b>Total Expenditures</b>	<b>484,355</b>	<b>410,866</b>	<b>521,087</b>	<b>522,501</b>	<b>516,157</b>	<b>(6,344)</b>	<b>-1.21%</b>

**Significant Budget Adjustments from Prior Year Revised Budget**

Expenditures      Revenues      FTEs

Total      -      -      -

**Budget Summary by Program**

Program	Fund	2012 Actual	2013 Actual	2014 Adopted	2014 Revised	2015 Budget	% Chg '14 Rev.-'15	2015 FTEs
Noxious Weeds	207	484,355	410,866	521,087	522,501	516,157	-1.21%	5.50
<b>Total</b>		<b>484,355</b>	<b>410,866</b>	<b>521,087</b>	<b>522,501</b>	<b>516,157</b>	<b>-1.21%</b>	<b>5.50</b>

**Personnel Summary By Fund**

Position Titles	Fund	Grade	Budgeted Compensation Comparison			FTE Comparison		
			2014 Adopted	2014 Revised	2015 Budget	2014 Adopted	2014 Revised	2015 Budget
Noxious Weed Director	207	GRADE130	47,258	52,639	52,639	1.00	1.00	1.00
Administrative Specialist	207	GRADE122	16,266	17,082	17,082	0.50	0.50	0.50
Herbicide Applicator	207	GRADE117	90,104	87,049	87,049	3.00	3.00	3.00
Senior Herbicide Applicator	207	GRADE117	51,665	35,705	35,705	1.00	1.00	1.00
<b>Subtotal</b>					<b>192,475</b>			
Add:								
Budgeted Personnel Savings					-			
Compensation Adjustments					6,985			
Overtime/On Call/Holiday Pay					2,217			
Benefits					119,549			
<b>Total Personnel Budget</b>					<b>321,226</b>	<b>5.50</b>	<b>5.50</b>	<b>5.50</b>