

# **Department of Corrections in Sedgwick County, KS**

**1995 - 2015**



*Community  
Corrections*

**1995**

*Department of*  
*CORRECTIONS*

*Youth Services*

# 1995

**The Sedgwick County Departments of Youth Services (est. 1985) and Community Corrections (est. 1983) were consolidated into Sedgwick County Department of Corrections.**

## Programs

- **DOC Administration & Operations**
  - Director's office
  - Grants, Fiscal Management, Housekeeping, Janitorial, and Maintenance Services
- **Juvenile Facilities**
  - Juvenile Residential Facility
  - Juvenile Detention Facility
    - Starting Point Prevention
    - Home-Based Supervision
  - Judge Riddel Boys Ranch
  - Sedgwick County Youth Program
- **Juvenile Intake and Intensive Supervision Program**
- **Adult Intensive Supervision Program**
  - Pretrial Services Program
- **Adult Residential Services**

# 1998

**The Juvenile Intake and Assessment Center (est. 1996) and Juvenile Field Services (est. 1998) joined the Department of Corrections.**

## Programs

- **DOC Administration & Operations**
  - Director's office
  - Grants, Fiscal Management, Housekeeping, Janitorial, and Maintenance Services
- **Juvenile Facilities**
  - Juvenile Residential Facility
  - Juvenile Detention Facility
    - Starting Point Prevention
    - Home-Based Supervision
  - Judge Riddel Boys Ranch
  - Sedgwick County Youth Program
- **Adult Intensive Supervision Program**
- **Adult Residential Services**
- **Juvenile Intake and Assessment Center**
- **Juvenile Field Services**
  - Juvenile Intake and Intensive Supervision
  - Juvenile Case Management

# 2006

The Criminal Justice Alternatives (CJA) was formed and joined the Department of Corrections.

- ❖ In 2004, the Criminal Justice Coordinating Council (CJCC) was formed to find efficiencies in the criminal justice system and develop and implement alternative programs designed to reduce recidivism, and provide adequate, well-run facilities.
- ❖ The CJCC developed the Criminal Justice Comprehensive Master Plan for Sedgwick County which was adopted by the BOCC in 2005.

## Programs

- **DOC Administration & Operations**
  - Director's office
  - Grants, Fiscal Management, Housekeeping, Janitorial, and Maintenance Services
- **Juvenile Facilities**
  - Juvenile Residential Facility
  - Juvenile Detention Facility
    - *Starting Point Prevention*
    - *Home-Based Supervision*
  - Judge Riddel Boys Ranch
  - Sedgwick County Youth Program
- **Adult Intensive Supervision Program**
- **Adult Residential Services**
- **Juvenile Intake and Assessment Center**
- **Juvenile Field Services**
  - Juvenile Intake and Intensive Supervision
  - Juvenile Case Management
- **Criminal Justice Alternatives**
  - Pretrial Services Program
  - Sedgwick County Drug Court
  - Day Reporting Center

# 2015

Today reflects a number of previous changes to organizational structure, programming and services, including –

- ❖ The Department was restructured and a Deputy Director position was added.
- ❖ Janitorial and Maintenance Services were centralized with Sedgwick County's Division of Information and Operations.
- ❖ In 2014, the Judge Riddel Boys Ranch was closed after nearly 50 years in operation due to lack of funding.

## Programs

### ➤ **DOC Administrative Services**

- Director's office
- Centralized Administrative & Business Services
- Professional Development/Training

### ➤ **Juvenile Services**

- Juvenile Residential Facility
- Juvenile Detention Facility
  - *Starting Point Prevention*
  - *Home-Based Supervision*
  - *Weekend Alternatives to Detention Program*
- Sedgwick County Youth Program
- Juvenile Intake and Assessment Center
- Juvenile Field Services
  - *Juvenile Intake & Intensive Supervision*
  - *Juvenile Case Management*

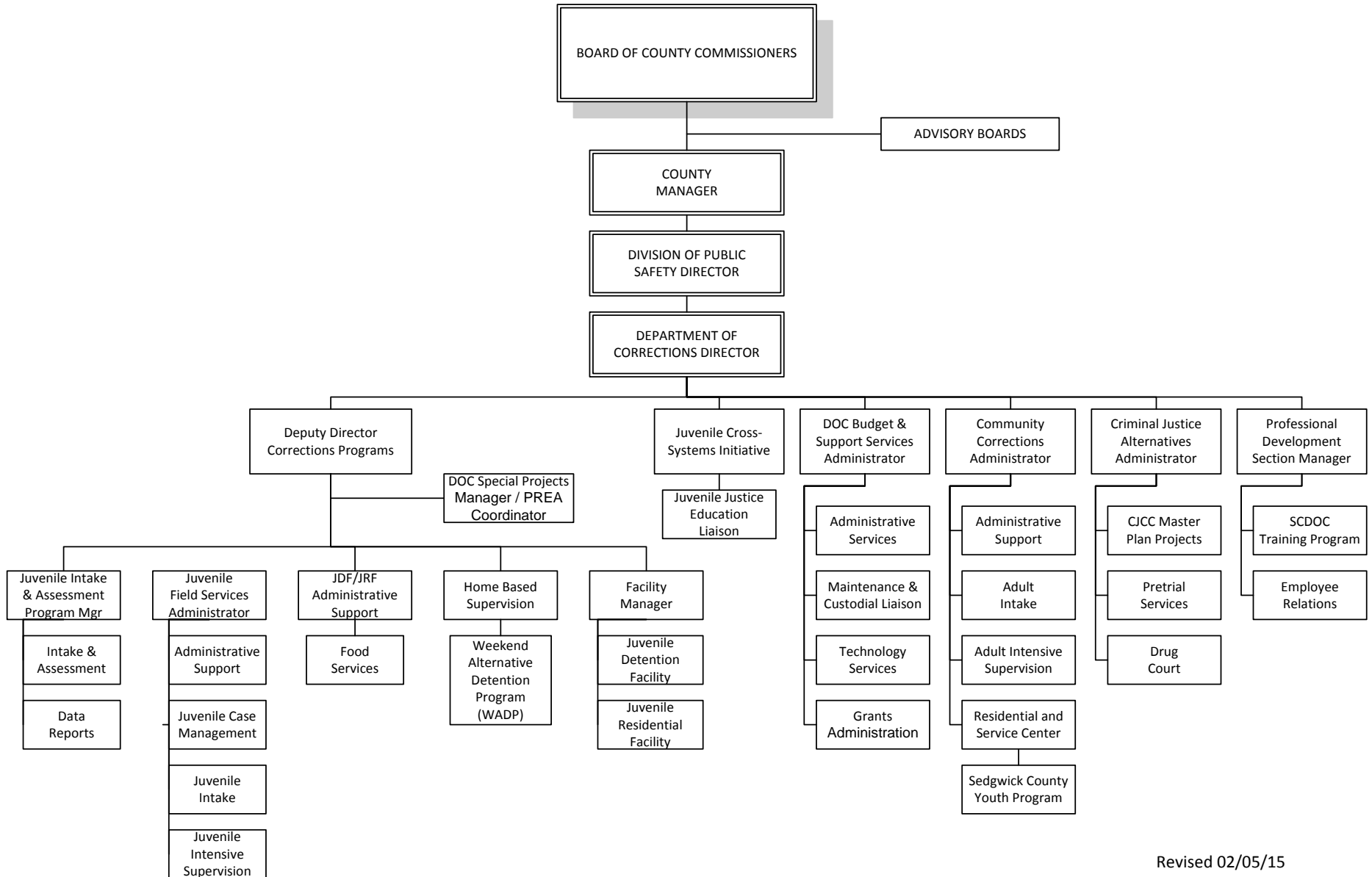
### ➤ **Adult Services**

- Intensive Supervision Program
- Adult Residential & Service Center
- Criminal Justice Alternatives
  - *Pretrial Services Program*
  - *Sedgwick County Drug Court*
  - *Day Reporting Center*

# SEDGWICK COUNTY DEPARTMENT OF CORRECTIONS

## ORGANIZATIONAL CHART

### 2015



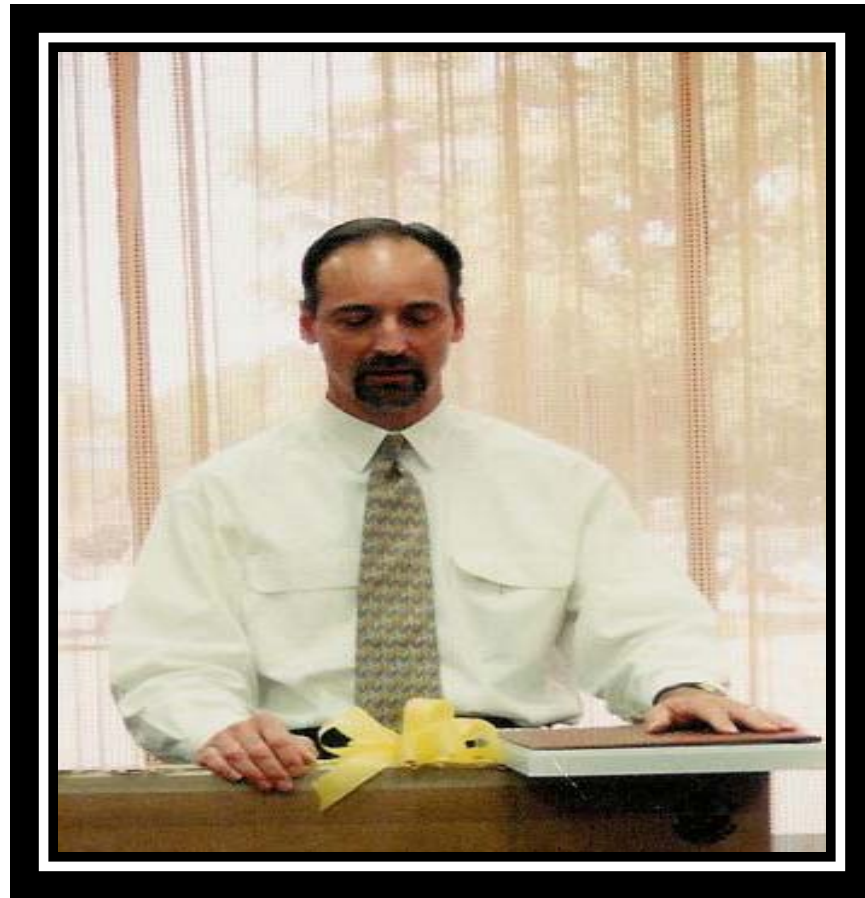
Revised 02/05/15

# DOC Directors

1995 - 2015







**Ken Hales, Director**  
**1995 - 1997**



**Mark Masterson, Director**  
**1998 - present**

# Advisory Board Chairs 1995 - 2015



# **Community Corrections Advisory Board Chairs**

- 1995 - 96      Galan M. Janeksela
- 1997 - 98      Douglas R. Roth
- 1999 - 01      Terri Moses
- 2002 - 03      Amy Cullom
- 2004 - 06      Ann Swegle
- 2007 - 10      Robert Hinshaw

# **Community Corrections Advisory Board Chairs**

- 2011                      Bruce Kouba/Ann Swegle
- 2012 - 13              Deanna Carrithers
- 2014                      Kelli Grant
- 2015                      Peter Shay

# **Juvenile Justice Advisory Board Chairs**

- 1999 - 2001                      Margalee Wright
- 2002 - 2006                      Karen Langston
- 2007 - 2013                      Terri Moses
- 2014                                  Ron Paschal
- 2015                                  Terri Moses

# Program Locations

## 1995 - 2015





# Administration/Operations

905 N. Main

1995 - 2006





# Administration/Operations

## 700 S. Hydraulic

### 2006 - present



**Adult Intensive Supervision**  
**905 N. Main**  
**1989 - present**



# Pretrial Services Program

905 N. Main

1994 - 2009



# **Criminal Justice Alternatives Sedgwick County Drug Court, Day Reporting, & Pretrial Services Program**

**3803 E. Harry, Suite 121**

**2009 - present**





**Adult Residential**  
**207/209 N. Emporia**  
**1989 – 2001**



# Adult Residential and Service Center

622 E. Central/623 E. Elm  
2001 - present



# Sedgwick County Youth Program

## 1025 N. Market

### 1984 – 1997





# Sedgwick County Youth Program

## 309 N. Market

### 1997 – 2002





# Sedgwick County Youth Program

622 E. Central/623 E. Elm  
2002 - present



# Juvenile Intensive Supervision

Juvenile Courthouse

1015 S. Minnesota

1988 - 1998



# Juvenile Intake Services

Juvenile Courthouse

1015 S. Minnesota

1988 - 2007





# Juvenile Intake Services

Juvenile Courthouse

1900 E. Morris

2007 - present



# Juvenile Field Services

Juvenile Intensive Supervision & Juvenile Case Management

961 S. Glendale

1998 - 2009



# Juvenile Field Services

Juvenile Intensive Supervision & Juvenile Case Management

3803 E. Harry, Suite 125

2009 - present



# Juvenile Intake & Assessment Center

## 1720 E. Morris

### 1996 - 2006





# Juvenile Intake & Assessment Center

## 700 S. Hydraulic

### 2006 - present





# Judge Riddel Boys' Ranch

25331 W. 39<sup>th</sup> St. S., Goddard

1960s - 2014



# Juvenile Residential Facility

881 S. Minnesota  
1994 - present





# Juvenile Detention Facility

## 1900 E. Morris

### 1970s - 2006



# Juvenile Detention Facility

700 S. Hydraulic

2006 - present

