

COUNTY	STATE	PROJECT NUMBER	FISCAL YEAR	SHEET NO.	TOTAL SHEETS
SEDGWICK	KANSAS	Project Number	2006	----	----

LIST OF TRAFFIC CONTROL DEVICES *

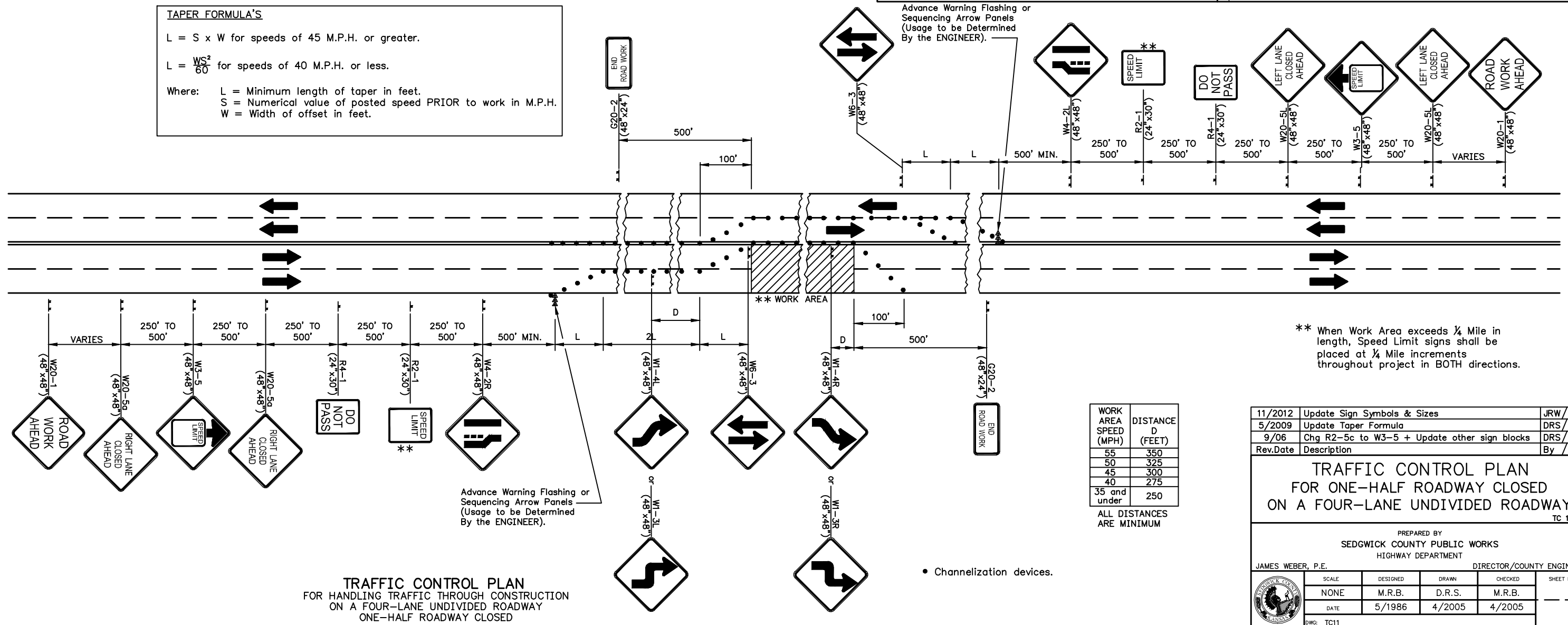
MUTCD DEVICE NO.	NO.	FLASHERS		REMARKS	DELINEATORS & CHANNELIZATION DEVICES					
		TYPE A	TYPE B		DEVICE	NO.	SIZE	FLASHERS		
								TYPE A	TYPE B	TYPE C
W20-1	2	2								
W20-5	4									
W3-5	2									
R4-1	2									
R2-1	2									
W4-2R	1									
W1-3L	1	1								
W1-3R	1	1								
W1-4L	1	1								
W1-4R	1	1								
W6-3	2									
G20-2	2									
W4-2L	1	1								

W1-3L & W1-3R used when Speed Limit is ≤ 30 M.P.H.
W1-4L & W1-4R used when Speed Limit is ≥ 35 M.P.H.

*FOR INFORMATION ONLY

See Sheet Nos. SheetNumber & SheetNumber for Traffic Control Notes.

TAPER FORMULA'S
 $L = S \times W$ for speeds of 45 M.P.H. or greater.
 $L = \frac{WS^2}{60}$ for speeds of 40 M.P.H. or less.
Where: L = Minimum length of taper in feet.
S = Numerical value of posted speed PRIOR to work in M.P.H.
W = Width of offset in feet.



** When Work Area exceeds 1/4 Mile in length, Speed Limit signs shall be placed at 1/4 Mile increments throughout project in BOTH directions.

WORK AREA SPEED (MPH)	DISTANCE D (FEET)
55	350
50	325
45	300
40	275
35 and under	250

ALL DISTANCES ARE MINIMUM

11/2012	Update Sign Symbols & Sizes	JRW /MRB
5/2009	Update Taper Formula	DRS /MRB
9/06	Chg R2-5c to W3-5 + Update other sign blocks	DRS /MRB
Rev.Date	Description	By /Chk

TRAFFIC CONTROL PLAN
FOR ONE-HALF ROADWAY CLOSED
ON A FOUR-LANE UNDIVIDED ROADWAY
TC 11-0

PREPARED BY SEDGWICK COUNTY PUBLIC WORKS HIGHWAY DEPARTMENT				
JAMES WEBER, P.E.		DIRECTOR/COUNTY ENGINEER		
SCALE	DESIGNED	DRAWN	CHECKED	SHEET NO.
NONE	M.R.B.	D.R.S.	M.R.B.	
DATE	5/1986	4/2005	4/2005	
DWG:	TC11			

Device: DWG To PDF.pc3 Page Setup: ---- By: Nixon, Nathan G.
G:\Nixon\New CAD Standards\TC11.dwg Layout: TC-11 Plotted: 12/11/2020 3:29 PM

TRAFFIC CONTROL PLAN
FOR HANDLING TRAFFIC THROUGH CONSTRUCTION
ON A FOUR-LANE UNDIVIDED ROADWAY
ONE-HALF ROADWAY CLOSED

• Channelization devices.