

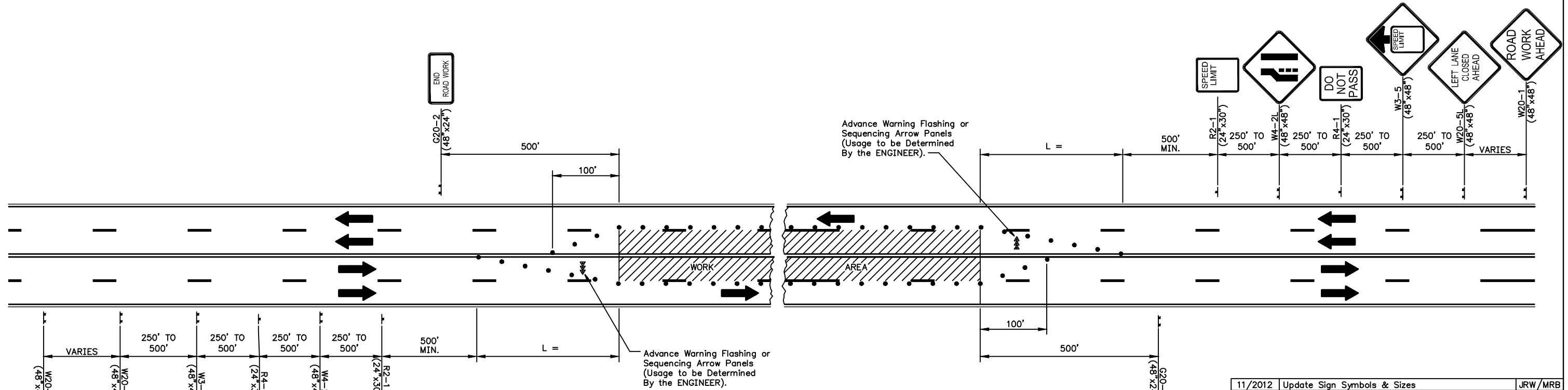
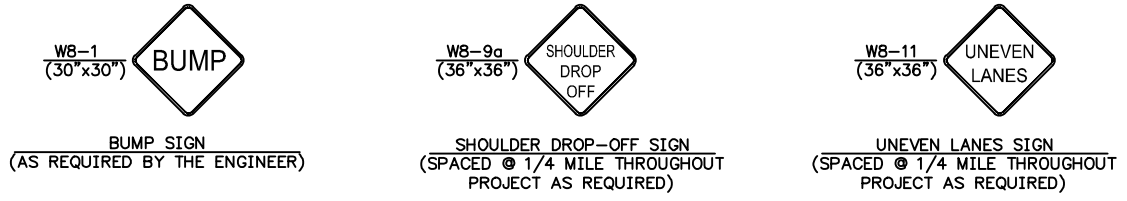
COUNTY	STATE	PROJECT NUMBER	FISCAL YEAR	SHEET NO.	TOTAL SHEETS
SEDGWICK	KANSAS	Project Number	2006	----	----

LIST OF TRAFFIC CONTROL DEVICES *

MUTCD DEVICE NO.	NO.	FLASHERS		REMARKS	DELINEATORS & CHANNELIZATION DEVICES					
		TYPE A	TYPE B		DEVICE	NO.	SIZE	FLASHERS		
								TYPE A	TYPE B	TYPE C
W20-1	2			ROAD WORK						
W20-5L	2			LEFT LANE CLOSED						
W3-5	2			SPEED ZONE AHEAD						
R4-1	2			DO NOT PASS						
W4-2L	2			LANE REDUCTION LEFT (SYMBOLIC)						
R2-1	2			SPEED LIMIT						
G20-2	2			END ROAD WORK						
W8-9a	As Req'd.			SHOULDER DROP OFF						
W8-11	As Req'd.			UNEVEN LANES						
W8-1	As Req'd.			BUMP						

* FOR INFORMATION ONLY

See Sheet Nos. SheetNumber & SheetNumber for Traffic Control Notes.



TAPER FORMULA'S

$L = S \times W$ for speeds of 45 M.P.H. or greater.

$L = \frac{WS^2}{60}$ for speeds of 40 M.P.H. or less.

Where: L = Minimum length of taper in feet.
S = Numerical value of posted speed PRIOR to work in M.P.H.
W = Width of offset in feet.

11/2012	Update Sign Symbols & Sizes	JRW /MRB
5/2009	Update Taper Formula	DRS /MRB
9/06	Chg R2-5c to W3-5 + Update other sign blocks	DRS /MRB
Rev.Date	Description	By /Chk

TRAFFIC CONTROL PLAN FOR CENTER LANES CLOSED ON A FOUR-LANE ROADWAY

TC 13-0

PREPARED BY
SEDGWICK COUNTY PUBLIC WORKS
HIGHWAY DEPARTMENT

JAMES WEBER, P.E. DIRECTOR/COUNTY ENGINEER

SCALE	DESIGNED	DRAWN	CHECKED	SHEET NO.
NONE	K.M.B.	D.R.S.	M.R.B.	---
DATE	11/2001	4/2005	4/2005	

DWG: TC13

TRAFFIC CONTROL PLAN FOR HANDLING TRAFFIC THROUGH CONSTRUCTION ON A FOUR-LANE UNDIVIDED ROADWAY

Device: DWG To PDF.pc3 Page Setup: ---- By: Nixon, Nathan G. C:\Nixon\New CAD Standards\TC13.dwg Layout: TC-13 Plotted: 12/11/2020 3:30 PM