

COUNTY	STATE	PROJECT NUMBER	FISCAL YEAR	SHEET NO.	TOTAL SHEETS
SEDGWICK	KANSAS	----	####	####	##

LIST OF TRAFFIC CONTROL DEVICES *

MUTCD DEVICE NO.	NO.	FLASHERS		REMARKS	DELINEATORS & CHANNELIZATION DEVICES					
		TYPE A	TYPE B		DEVICE	NO.	SIZE	FLASHERS		
								TYPE A	TYPE B	TYPE C
W20-1	2	2								
W20-5	4									
R2-5c	2									
R2-1	2									
W4-2R	1									
W1-3L	1	1								
W1-3R	1	1								
W1-4L	1	1								
W1-4R	1	1								
W6-3	2									
G20-2	2									
W4-2L	1	1								

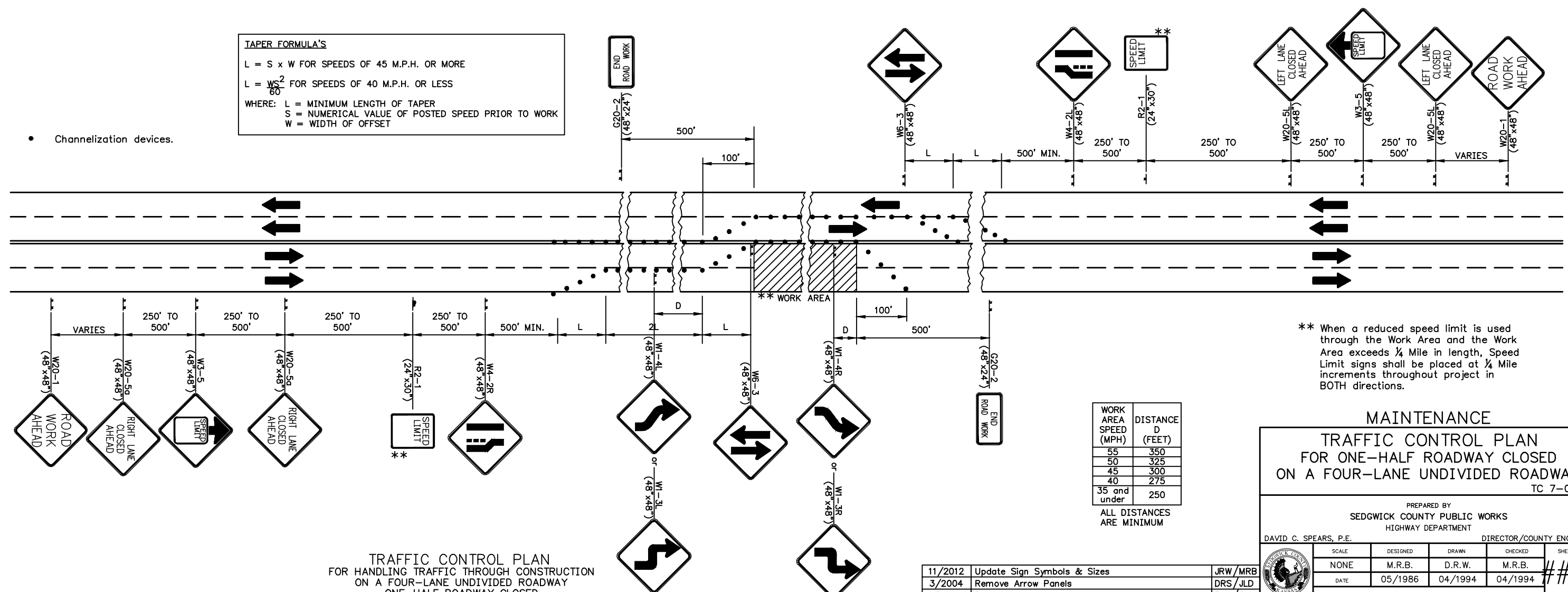
W1-3L & W1-3R used when Speed Limit is 30 M.P.H. and less.
W1-4L & W1-4R used when Speed Limit is greater than 35 M.P.H.

* FOR INFORMATION ONLY

SEE SHEET NO. _____ FOR TRAFFIC CONTROL NOTES

TAPER FORMULA'S
L = S x W FOR SPEEDS OF 45 M.P.H. OR MORE
L = $\frac{WS^2}{80}$ FOR SPEEDS OF 40 M.P.H. OR LESS
WHERE: L = MINIMUM LENGTH OF TAPER
S = NUMERICAL VALUE OF POSTED SPEED PRIOR TO WORK
W = WIDTH OF OFFSET

• Channelization devices.



** When a reduced speed limit is used through the Work Area and the Work Area exceeds 1/4 Mile in length, Speed Limit signs shall be placed at 1/4 Mile increments throughout project in BOTH directions.

TRAFFIC CONTROL PLAN FOR HANDLING TRAFFIC THROUGH CONSTRUCTION ON A FOUR-LANE UNDIVIDED ROADWAY ONE-HALF ROADWAY CLOSED

MAINTENANCE TRAFFIC CONTROL PLAN FOR ONE-HALF ROADWAY CLOSED ON A FOUR-LANE UNDIVIDED ROADWAY TC 7-0M

PREPARED BY SEDGWICK COUNTY PUBLIC WORKS HIGHWAY DEPARTMENT				
DAVID C. SPEARS, P.E. DIRECTOR/COUNTY ENGINEER				
SCALE	DESIGNED	DRAWN	CHECKED	SHEET NO.
NONE	M.R.B.	D.R.W.	M.R.B.	###
DATE	05/1986	04/1994	04/1994	###
DWG: TC7				

11/2012	Update Sign Symbols & Sizes	JRW /MRB
3/2004	Remove Arrow Panels	DRS /JLD
Date	Description	By /Chk