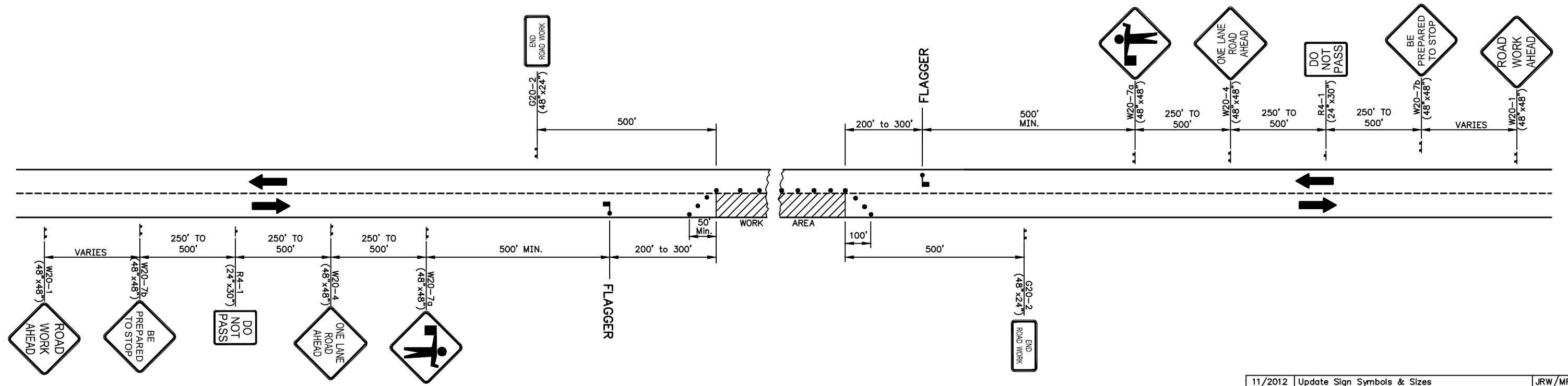
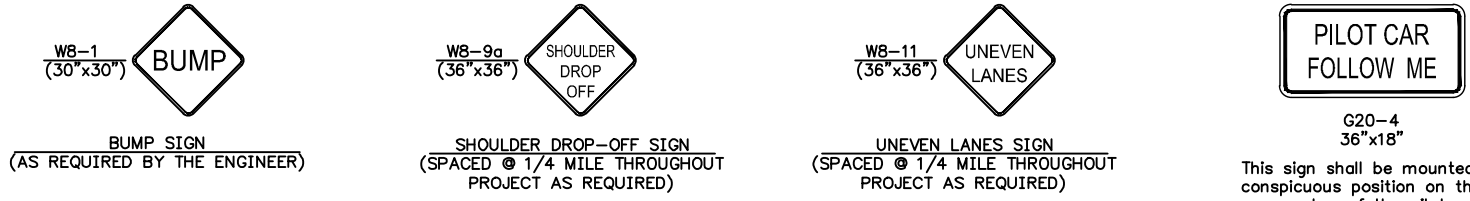


LIST OF TRAFFIC CONTROL DEVICES *

MUTCD DEVICE NO.	NO.	FLASHERS		REMARKS	DELINEATORS & CHANNELIZATION DEVICES					
		TYPE A	TYPE B		DEVICE	NO.	SIZE	FLASHERS		
								TYPE A	TYPE B	TYPE C
W20-1	2				BARRICADES					
W20-7b	2				TYPE III					
R4-1	2				TYPE II					
W20-4	2				TYPE I					
W20-7a	2				DRUMS					
G20-2	2				SLIM LINE CHANNELIZERS					
G20-4	1				CONES					
W8-9a					TUBES					
W8-11					VERTICAL PANELS					
W8-1					SINGLE					
					BACK TO BACK					
					PAVEMENT MARKING	WHITE	YELLOW			
					4" BROKEN (Lin. Ft.)					
					4" SOLID (Lin. Ft.)					
					TEMPORARY STRIPING (Line Mile)					

*FOR INFORMATION ONLY

See Sheet Nos. SheetNumber & SheetNumber for Traffic Control Notes.



TRAFFIC CONTROL PLAN FOR HANDLING TRAFFIC THROUGH CONSTRUCTION TO BE USED ONLY WITH A PILOT CAR

NOTES:

Flagger ahead (W20-7a, symbolic) sign shall be used ONLY when a flagger is present. At all other times this sign shall be covered or removed.

Flaggers shall comply with the "Handbook For Flaggers" State of Kansas (latest edition).

On roadways utilizing a flagger, additional flaggers and W20-7a signs may be required when traffic volumes, especially during peak hours, are such that approaching traffic will not have adequate advance warning or when traffic is backed up more than fifteen hundred (1500') feet from the flagger station.

- Channelization devices.

11/2012	Update Sign Symbols & Sizes	JRW /MRB
5/2009	Update Sign Symbols	DRS /MRB
Rev.Date	Description	By /Chk

TRAFFIC CONTROL PLAN FOR ONE LANE CLOSED ON A TWO-LANE ROADWAY USING A PILOT CAR

TC 6-0

PREPARED BY
SEDGWICK COUNTY PUBLIC WORKS
HIGHWAY DEPARTMENT

DAVID C. SPEARS, P.E. DIRECTOR/COUNTY ENGINEER

SCALE	DESIGNED	DRAWN	CHECKED	SHEET NO.
NONE	M.R.B.	D.R.S.	M.R.B.	---
DATE	6/1988	4/2005	4/2005	

DWG: TC6

Device: DWG To PDF.pc3 Page Setup: ---- By: Nixon, Nathan G. Q:\Blocks\STANDARDS\TC6.dwg Layout: TC-6 Plotted: 7/2/2019 3:46 PM