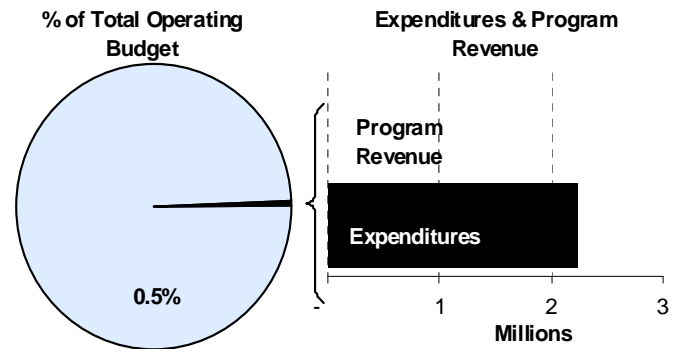
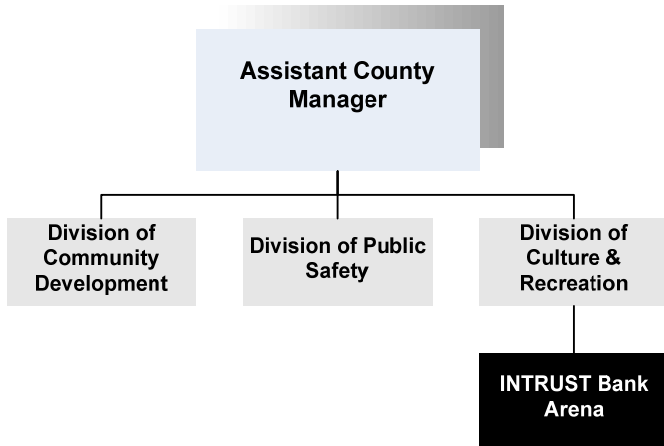


Ron Holt
 Assistant County Manager
 525 N. Main, Suite 343
 Wichita, Kansas 67203
 316-660-9393
 rholt@sedgwick.gov

Mission:

- The INTRUST Bank Arena is a modern, first class sports and entertainment venue owned by Sedgwick County and operated by SMG, providing 15,000 seats for basketball games. The INTRUST Bank Arena is home to indoor sporting events, concerts, family shows and other entertainment.



Program Information

The INTRUST Bank Arena (Downtown Arena) is a modern, state-of-the-art sports and entertainment venue, perfect for concerts and conventions alike. Located in the heart of downtown Wichita with restaurants, shops and eclectic entertainment options nearby, the INTRUST Bank Arena is the premier arena in the Midwest. The Arena features 22 suites, 40 loge boxes, 300 premium seats with a total 15,000-seat capacity and hosts the top sporting events and entertainment with the industry’s best acoustics and sound system.

Other arena facts:

- Features 65-foot ceilings (versus 80- or 90- foot ceilings at larger venues) for better acoustics and a more intimate atmosphere
- A large four-sided scoreboard with high-resolution and low-resolution video and LED screens is centrally-hung to complement the smaller LED screens circling the entire arena bowl
- Serves a wide variety of food and beverages from 16 concession stands

- The box office is located inside for comfort in all weather conditions
- Offers 12 ticket windows for quick ticket purchasing and pick-up
- Pre-function room with seating for 150 guests is available for use on non-event days, and prior to certain events
- More than 4,000 parking spaces within a 4-block radius

The facility is owned by Sedgwick County operated through a management agreement with SMG. SMG manages stadiums, arenas, convention centers, and theaters around the world, and assumed management of the Arena when it opened in early 2010.

Construction costs associated with the INTRUST Bank Arena were funded without debt from the proceeds of a special one-cent County sales tax, which was approved by voters in November, 2004. Senate Bill 58, signed on April 4, 2005 by Governor Kathleen Sebelius, authorized Sedgwick County to collect a one percent sales tax for a period of 30 months beginning July 1, 2005. The proceeds for this tax were specifically

designated for the construction of an Arena in the downtown area of Wichita and renovations to the Kansas Pavilions. This method allowed for the Arena to be constructed while the revenue was collected, eliminating the need for securing bonds to finance the project, saving approximately \$112 million in interest. The arena sales tax revenues exceeded projections and totaled \$206.5 million.

Local general contractor Dondlinger & Sons partnered with Hunt Construction, a national firm with significant experience in building arenas to complete the arena project. The construction team worked with the Arena designers and the Arena Design Consortium to bring to life the building's brick and limestone facades, and the expansive lobby view toward Kellogg welcomes visitors and blends with the surrounding architectural heritage. The location was selected to help generate further redevelopment efforts by the City of Wichita for the downtown area.

Department Sustainability Initiatives

The INTRUST Bank Arena contributes to promoting, supporting and facilitating the creation of wealth and employment opportunities in downtown Wichita. The Metropolitan Area Planning Department (MAPD), which is jointly funded by Sedgwick County and the City of Wichita, is tasked with producing the neighborhood redevelopment plan for the area surrounding the INTRUST Bank Arena.

Department Accomplishments

One of the unique aspects of the Arena project was continuous involvement by citizens. Commissioners encouraged citizen engagement as a means of soliciting ideas, concerns and views throughout the planning, design and construction processes. Two citizen-based committees, the Citizen Arena Sales Tax Oversight Committee and the Citizen Design Review Committee

were created to ensure public participation, as well as numerous public meetings. In addition, Sedgwick County uses the Sedgwick County website in an effort to continue to keep the operation of the Arena transparent.

Some of 2011's top events include:

- Cirque de Soleil: Alegria
- NCAA 2011 Division I Women's Basketball Championship Rounds I & II
- Kenny Chesney
- James Taylor
- Tim McGraw
- Josh Groban
- Keith Urban
- Sugarland
- NCAA Division I Men's Basketball Kansas State University vs. West Virginia University

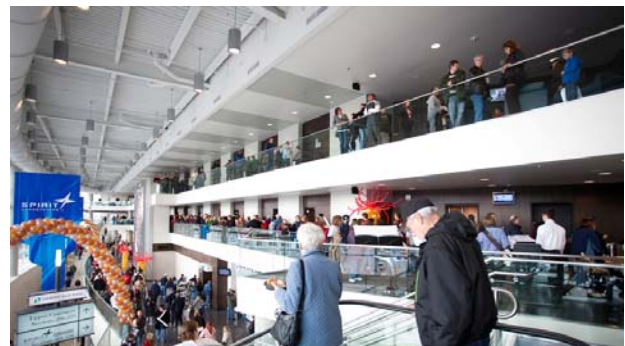
Arena Timeline

- 1977 - Kansas Coliseum built
- November 2, 2004 - Sedgwick County Arena approved by Sedgwick County voters.
- April 4, 2005 - Governor signs Senate Bill 58
- July 1, 2005 - Sales tax begins
- July 27, 2005 - Arena Design Consortium awarded contract for engineering and architect services for the Arena.
- November 2005 - Site selection complete
- January 2006 - Land acquisition begins
- May 24, 2006 - Exterior design selected
- November 2006 - Start bid process to hire general contractor for Pavilion upgrade
- June 2007 - Arena Design Consortium awarded contract for engineering and architect services for the Arena.
- July 2007 - Site demolition completed
- September 2007 - Arena construction begins
- September 2007 - Pavilions closed for renovations (May - Sept.)
- December 2007 - Sales tax ends
- 2010 - Arena construction complete
- January 9, 2010 - Opening Event

Budget Adjustments

The INTRUST Bank Arena's 2012 budget reflects a decline of 26.6 percent or \$328,558 due to \$260,400 budgeted in 2011 for the City of Wichita to provide parking operations and maintenance on lots A, B, C & D which is not budgeted in 2012. The 2011 revised budget figures also include \$32,500 for the Q-Line transit agreement. The 2012 budget includes \$30,000 for the Arena repair fund, \$32,500 for the Q-Line transit agreement and \$10,000 for the Coleman property

parking lot.



Significant Adjustments From Previous Budget Year

- Reduction in contractals including parking operation funds for City owned lots A, B, C & D
- Increase in other revenues due to revenue sharing agreement with SMG

Expenditures	Revenue	FTEs
(320,400)	200,000	

Total	(320,400)	200,000	-
--------------	-----------	---------	---

Budget Summary by Category

	2010 Actual	2011 Adopted	2011 Revised	2012 Budget	% Chg. '11-'12
Expenditures					
Personnel	-	-	-	-	
Contractual Services	182,250	392,900	392,900	72,500	-81.5%
Debt Service	-	-	-	-	
Commodities	-	-	-	-	
Capital Improvements	15,417	-	258,158	250,000	-3.2%
Capital Equipment	-	-	-	-	
Interfund Transfers	584,989	584,989	584,989	584,989	0.0%
Total Expenditures	782,656	977,889	1,236,047	907,489	-26.6%
Revenue					
Taxes	-	-	-	-	
Intergovernmental	-	-	-	-	
Charges For Service	-	590,000	590,000	590,000	0.0%
Other Revenue	19,286	-	-	200,000	
Total Revenue	19,286	590,000	590,000	790,000	33.9%
Full-Time Equivalents (FTEs)	-	-	-	-	

Budget Summary by Fund

Expenditures	2011 Revised	2012 Budget
Downtown Arena-550	1,236,047	907,489
Total Expenditures	1,236,047	907,489

Budget Summary by Program

Program	Fund	Expenditures				2012 Budget	% Chg. '11-'12	Full-Time Equivalents (FTEs)		
		2010 Actual	2011 Adopted	2011 Revised	2011 Adopted			2011 Revised	2012 Budget	
Pavilion Operations	550	584,989	584,989	584,989	584,989	0.0%	-	-	-	
Arena Operations	550	186,416	392,900	392,900	72,500	-81.5%	-	-	-	
Arena Capital Improv	550	11,251	-	258,158	250,000	-3.2%	-	-	-	
Total		782,656	977,889	1,236,047	907,489	-26.6%	-	-	-	



● Pavilion Operations

Senate Bill 58, signed on April 4, 2005 by Governor Kathleen Sebelius, authorized Sedgwick County to collect a one percent sales tax for a period of 30 months beginning July 1, 2005. The proceeds for this tax were specifically designated for the construction of an Arena in the downtown area of Wichita, renovations to the Kansas Pavilions, and an operating/maintenance reserve for the INTRUST Bank Arena and the Kansas Pavilions. Beginning in 2010, the operating subsidy to the Kansas Pavilions was paid from the Arena Sales Tax fund. This is expected to continue in 2012.

Fund(s): Downtown Arena 550

57002-550

	2010	2011	2011	2012	% Chg.
	Actual	Adopted	Revised	Budget	'11-'12
Expenditures					
Personnel	-	-	-	-	
Contractual Services	-	-	-	-	
Debt Service	-	-	-	-	
Commodities	-	-	-	-	
Capital Improvements	-	-	-	-	
Capital Equipment	-	-	-	-	
Interfund Transfers	584,989	584,989	584,989	584,989	0.0%
Total Expenditures	584,989	584,989	584,989	584,989	0.0%
Revenue					
Taxes	-	-	-	-	
Intergovernmental	-	-	-	-	
Charges For Service	-	-	-	-	
Other Revenue	-	-	-	-	
Total Revenue	-	-	-	-	
Full-Time Equivalents (FTEs)	-	-	-	-	

● Arena Operations

Senate Bill 58, signed on April 4, 2005 by Governor Kathleen Sebelius, authorized Sedgwick County to collect a one percent sales tax for a period of 30 months beginning July 1, 2005. The proceeds for this tax were specifically designated for the construction of an Arena in the downtown area of Wichita, renovations to the Kansas Pavilions, and an operating/maintenance reserve for the INTRUST Bank Arena and the Kansas Pavilions. The Arena Operations fund center is budgeted for operation and maintenance expenditures for the INTRUST Bank Arena.

Fund(s): Downtown Arena 550

57014-550

	2010	2011	2011	2012	% Chg.
	Actual	Adopted	Revised	Budget	'11-'12
Expenditures					
Personnel	-	-	-	-	
Contractual Services	182,250	392,900	392,900	72,500	-81.5%
Debt Service	-	-	-	-	
Commodities	-	-	-	-	
Capital Improvements	4,166	-	-	-	
Capital Equipment	-	-	-	-	
Interfund Transfers	-	-	-	-	
Total Expenditures	186,416	392,900	392,900	72,500	-81.5%
Revenue					
Taxes	-	-	-	-	
Intergovernmental	-	-	-	-	
Charges For Service	-	590,000	590,000	590,000	0.0%
Other Revenue	19,286	-	-	200,000	
Total Revenue	19,286	590,000	590,000	790,000	33.9%
Full-Time Equivalents (FTEs)	-	-	-	-	



• **Arena Capital Improvement**

Senate Bill 58, signed on April 4, 2005 by Governor Kathleen Sebelius, authorized Sedgwick County to collect a one percent sales tax for a period of 30 months beginning July 1, 2005. The proceeds for this tax were specifically designated for the construction of an Arena in the downtown area of Wichita, renovations to the Coliseum Pavilions, and an operating/maintenance reserve for the INTRUST Bank Arena and the Kansas Pavilions. The Arena Capital Improvement fund center is budgeted for INTRUST Bank Arena capital projects.

Fund(s): Downtown Arena 550

57017-550

	2010	2011	2011	2012	% Chg.
	Actual	Adopted	Revised	Budget	'11-'12
Expenditures					
Personnel	-	-	-	-	
Contractual Services	-	-	-	-	
Debt Service	-	-	-	-	
Commodities	-	-	-	-	
Capital Improvements	11,251	-	258,158	250,000	-3.2%
Capital Equipment	-	-	-	-	
Interfund Transfers	-	-	-	-	
Total Expenditures	11,251	-	258,158	250,000	-3.2%
Revenue					
Taxes	-	-	-	-	
Intergovernmental	-	-	-	-	
Charges For Service	-	-	-	-	
Other Revenue	-	-	-	-	
Total Revenue	-	-	-	-	
Full-Time Equivalents (FTEs)	-	-	-	-	

