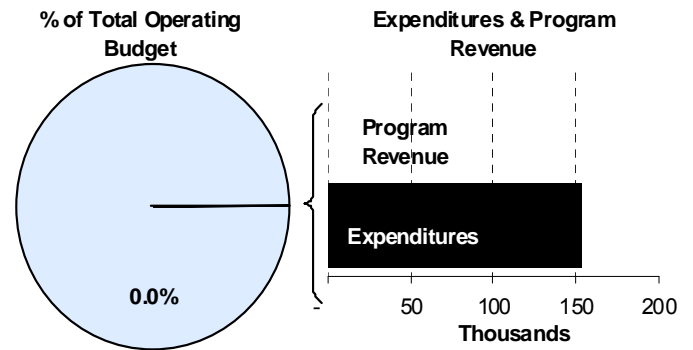
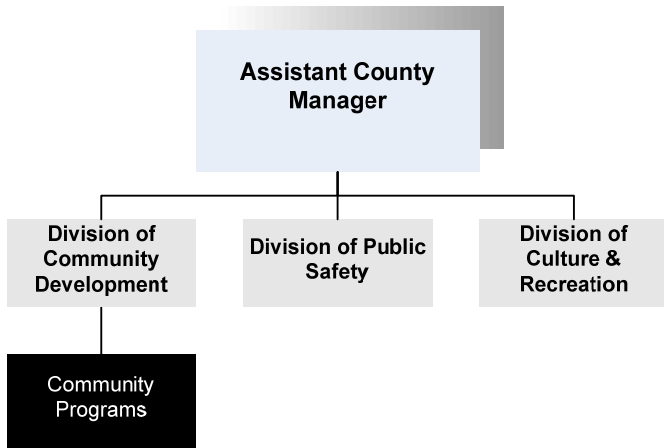




Irene Hart
 Director of Community Development
 510 N. Main, 6th Floor
 Wichita, KS 67203
 316-660-9863
ihart@sedgwick.gov

Mission:

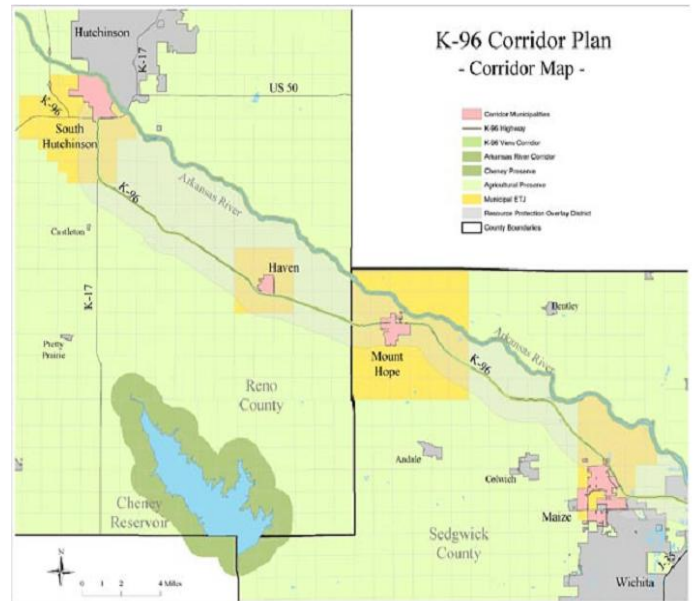
- Support local agencies providing enhanced quality of life for the residents of Sedgwick County.



Program Information

Sedgwick County offers economic assistance for various area agencies that provide significant contributions to the community. Agencies funded by Community Programs submit budget proposals outlining funding needs and justification for local government assistance. Community Programs has several ongoing contracts and continues to receive new requests for funding each year.

In 2011, Sedgwick County will continue to provide \$37,250 to Community Housing Services, Inc. (CHS) a local NeighborWorks affiliate working in the Oaklawn neighborhood since 1996. Through partnerships with residents and others, CHS seeks to increase homeownership, improve housing conditions, and provide leadership opportunities for residents. CHS has been nationally designated as a Homeownership Center and provides homebuyer education and counseling, loan programs, and has constructed new homes in Oaklawn.



Sedgwick County is one of two member counties in the K-96 Corridor Development Association, formed to

promote orderly development along the 58 mile K-96 corridor between South Hutchinson (in Reno County) and the City of Maize (in Sedgwick County). In 2011 \$8,000 has been budgeted for the Association’s annual dues. Other members include municipalities, businesses, and landowners with interest in economic development along the corridor.

Sedgwick County provides support to the Wichita office of the Mid-America Minority Business Development Council (MAMBDC). The mission of the MAMBDC is to increase business development opportunities between majority and minority businesses. MAMBDC certifies companies as Minority Business Enterprises (MBEs), provides opportunities to build business relationships and provides training in professional development, benchmarking and improving company-wide performance.

Sedgwick County provides funding for an extension of the Wichita Transit Authority (WTA) mass transit route through the Oaklawn/Sunview community, located in the unincorporated area of the County. The WTA provides access for over 3,000 residents to employment and education opportunities, as well as various other destinations at an affordable cost.

Financial support is provided to the Mediation Center, \$10,000 is budgeted in 2011, to aid training and coordination of volunteer mediators to serve primarily in conjunction with Small Claims Court. Mediators assist disputing parties in coming to a resolution, thus reducing the number of cases involved in the judicial system. Nearly 300 cases receive volunteer mediator assistance each year, and over 90 percent have a successful resolution.

Departmental Sustainability Initiatives

The K-96 Corridor Economic Development Plan represents a collaborative effort that spans the border of two counties and intersects four communities. The counties of Reno and Sedgwick and the communities of

Maize, Mt. Hope, Haven, and South Hutchinson have come together to plan for the future of the K-96 Corridor. The Corridor currently serves as the primary transportation route between Wichita, on the southeast, and Hutchinson on the north. K-96 is one of the most heavily traveled State Highways within Kansas, allowing people to easily commute between two prominent Kansas cities. The counties and municipalities have created and supported this collaborative effort for the benefit of the region.

Department Accomplishments

The K-254 Corridor Coalition Final Report is now available on the Sedgwick County website. The K-254 Corridor Economic Development Plan represents a regional effort that spans the border of two counties and intersects six communities. The Counties of Sedgwick and Butler and the communities of Wichita, Bel-Aire, Kechi, Towanda, and El Dorado have come together to plan for the future development of the K-254 Corridor. The Corridor currently serves as the primary transportation route between Wichita, on the southwest, and El Dorado on the northeast.

Budget Adjustments

Changes to the Community Development 2011 budget reflect a one percent increase in contractual, commodity, and capital equipment based on 2009 actual expenditures for property tax supported funds.

Alignment with County Values

- **Open Communication-**
The Mediation Center facilitates dispute resolution by using skills to open up or improve dialogue between disputants
- **Respect -**
A core value of Community Housing Services (CHS) is leadership and decision-making by residents of the neighborhood in which the organization works
- **Professionalism -**
Members of the K-96 Association work in collaboration, without regard to political boundaries, to stimulate appropriate development along the entire length of the corridor

Goals & Initiatives

- **Implement Phase II of the K-96 Corridor Development Plan**
- **Construct three new homes in the Oaklawn neighborhood**
- **Continue to provide six day per week mass transit services to the Oaklawn neighborhood**

Significant Adjustments From Previous Budget Year

Expenditures Revenue FTEs

- No significant adjustments for the budget year

Total - - -

Budget Summary by Category						Budget Summary by Fund		
	2009 Actual	2010 Adopted	2010 Revised	2011 Budget	% Chg. '10-'11	Expenditures	2010 Revised	2011 Budget
Expenditures								
Personnel	-	-	-	-	-	General Fund-110	143,842	153,693
Contractual Services	217,569	143,842	143,842	153,693	6.8%			
Debt Service	-	-	-	-	-			
Commodities	-	-	-	-	-			
Capital Improvements	-	-	-	-	-			
Capital Equipment	-	-	-	-	-			
Interfund Transfers	-	-	-	-	-			
Total Expenditures	217,569	143,842	143,842	153,693	6.8%	Total Expenditures	143,842	153,693
Revenue								
Taxes	-	-	-	-	-			
Intergovernmental	-	-	-	-	-			
Charges For Service	-	-	-	-	-			
Other Revenue	-	-	-	-	-			
Total Revenue	-	-	-	-	-			
Full-Time Equivalents (FTEs)	-	-	-	-	-			

Budget Summary by Program

Program	Fund	Expenditures				2011 Budget	% Chg. '10-'11	Full-Time Equivalents (FTEs)		
		2009 Actual	2010 Adopted	2010 Revised	2010 Adopted			2010 Revised	2011 Budget	
Community Programs	110	217,569	143,842	143,842	153,693	6.8%	-	-	-	
Total		217,569	143,842	143,842	153,693	6.8%	-	-	-	

