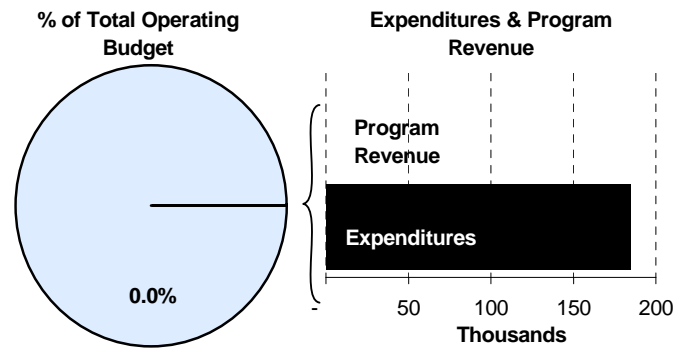
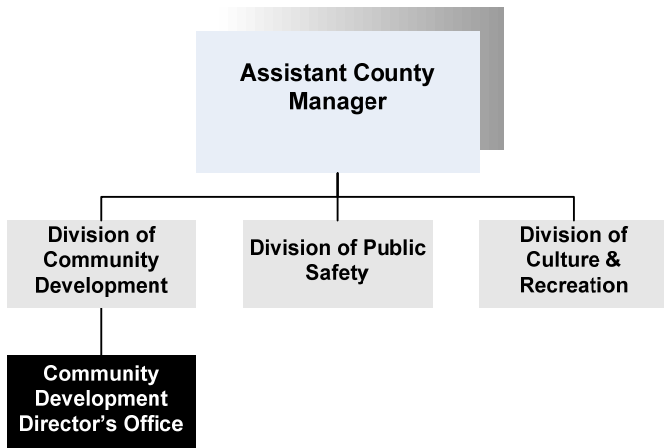




Irene Hart
 Director of Community Development
 510 N. Main, 6th Floor
 Wichita, KS 67203
 316-660-9863
ihart@sedgwick.gov

Mission:

- ❑ To promote the growth of a healthy and productive community that successfully integrates the natural, the social, and the economic environments.

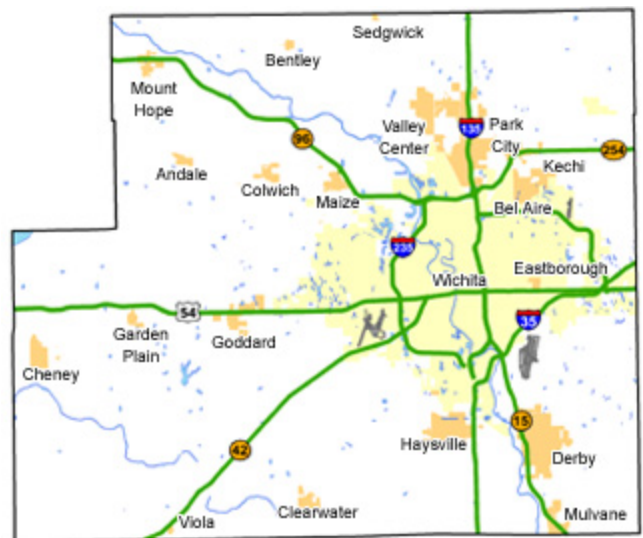


Program Information

The Community Development Director's Office is responsible for a broad range of both internal and external functions. Internally, the office oversees the operation of four individual departments and all programs funded within the Community Development Division. The Director's Office provides administrative support and encourages coordination of community development efforts among internal and external entities.

The Director's Office functions externally as the primary policy staff for economic development and activities engaging the community, other local governments, and interested organizations. Activities include:

- Primary staff support for the K-96 and K-254 Corridor Coalitions and the Greater Wichita Economic Development Coalition.
- Working with multiple jurisdictions and interest groups to develop policies which promote efficient and orderly urban growth.
- Acting as a liaison to ethnic, minority and neighborhood-based organizations in the County.



Departmental Sustainability Initiatives

Environmental Resources provides free environmental assessments and Phase I study reports to Mennonite Housing so they can obtain Housing and Urban Development (HUD) grants. The Department has also performed Phase I environmental studies to obtain grants for the National Center for Aviation Training. Environmental Resources has also worked with Greater Wichita Economic Development Coalition (GWEDC) in the recruitment of businesses to our community. The Department has provided these businesses with information on local environmental permits, environmental conditions in our community, and the Phase I environmental study of properties in question.

Code Enforcement provides a “One-Stop-Shop” location for citizens to obtain the proper permits needed for construction projects. In the past, citizens would make multiple stops at various destinations to obtain all necessary permits. Permits for building construction, wastewater, floodplain, mortgage inspection, and water wells can now be picked up from the Code Enforcement office at 1144 S. Seneca.

The Animal Control Department is responsible for enforcing all Sedgwick County codes concerning the housing and care of animals. Officers also ensure that animals do not pose a health or safety hazard to County residents and that each animal is appropriately vaccinated and licensed as required by law per County Statute.

Economic Development promotes a strong and diverse regional economy by helping local businesses grow, increasing opportunity for international trade and for business retention and the attraction of new jobs to Sedgwick County.

Sedgwick County offers economic assistance for various area agencies that provide significant contributions to the community. Agencies funded by Community

Programs submit budget proposals outlining funding needs and justification for local government assistance.

Beginning in 2005, Sedgwick County and the City of Wichita adopted a transportation service agreement to provide a funding subsidy for AirTran Airways. This airline, operating out of Wichita’s Mid-Continent Airport, provides lower fares for citizens traveling to and from Wichita, encouraging airline competition in the Wichita market. The subsidy is part of the Affordable Airfares program.

Department Accomplishments

Alignment with County Values

- **Equal Opportunity** -
The Department acts as a liaison to ethnic, minority and neighborhood based organizations in the County
- **Honesty** -
Business incentive policies are widely available to the public and are applied consistently
- **Professionalism** -
Members of the K-96 Association work in collaboration, without regard to political boundaries, to stimulate appropriate development along the entire length of the corridor

Goals & Initiatives

- **Commit resources to increase vitality and values of existing neighborhoods**
- **Retain and expand jobs through incentives and other innovative means**
- **Continue contributing to the K-96 Corridor Development Plan**

The K-254 Corridor Coalition Final Report is now available on the Sedgwick County website. The K-254 Corridor Economic Development Plan represents a regional effort that spans the border of two counties and intersects six communities. The Counties of Sedgwick and Butler and the communities of Wichita, Bel-Aire, Kechi, Towanda, and El Dorado have come together to plan for the future development of the K-254 Corridor.

Every year approximately 1,000 low and moderate-income families throughout the State use either the Kansas Local Government Statewide Housing Program (KLGSH) or the Kansas Mortgage Savers Program (KMS) to buy their first home. These programs are administered by the Sedgwick

County Housing Department and offer unique opportunities for qualified first-time homebuyers.

Budget Adjustments

Changes to the Community Development Director’s 2010 budget reflect an increase in benefits costs and a 2.0 percent general pay adjustment for employees earning less than \$75,000. No increases were provided for contractals, commodities, and capital equipment from the 2009 Adopted budget for property tax supported funds.

Significant Adjustments From Previous Budget Year

- No significant adjustments for the budget year

Expenditures Revenue FTEs

Total

Budget Summary by Category						Budget Summary by Fund		
	2008 Actual	2009 Adopted	2009 Revised	2010 Budget	% Chg. 09-10	Expenditures	2009 Revised	2010 Budget
Expenditures								
Personnel	158,979	165,096	165,096	168,507	2.1%	General Fund-110	179,332	184,405
Contractual Services	12,242	13,367	13,367	15,405	15.2%			
Debt Service	-	-	-	-				
Commodities	1,853	869	869	493	-43.3%			
Capital Improvements	-	-	-	-				
Capital Equipment	-	-	-	-				
Interfund Transfers	-	-	-	-				
Total Expenditures	173,074	179,332	179,332	184,405	2.8%	Total Expenditures	179,332	184,405
Revenue								
Taxes	-	-	-	-				
Intergovernmental	-	-	-	-				
Charges For Service	-	-	-	-				
Other Revenue	-	-	-	-				
Total Revenue	-	-	-	-				
Full-Time Equivalents (FTEs)	1.90	1.90	1.90	1.90	0.0%			

Budget Summary by Program									
Program	Fund	Expenditures				% Chg. 09-10	Full-Time Equivalents (FTEs)		
		2008 Actual	2009 Adopted	2009 Revised	2010 Budget		2009 Adopted	2009 Revised	2010 Budget
Director's Office	110	173,074	179,332	179,332	184,405	2.8%	1.90	1.90	1.90
Total		173,074	179,332	179,332	184,405	2.8%	1.90	1.90	1.90



Personnel Summary by Fund

Position Title(s)	Fund	Band	Budgeted Personnel Costs			Full-Time Equivalents (FTEs)			
			2009 Adopted	2009 Revised	2010 Budget	2009 Adopted	2009 Revised	2010 Budget	
Director of Community Developmen	110	B531	90,643	93,335	93,335	0.90	0.90	0.90	
Administrative Assistant	110	B218	32,625	34,135	34,135	1.00	1.00	1.00	
Subtotal					127,470		1.90	1.90	1.90
Add:									
Budgeted Personnel Savings (Turnover)					-				
Compensation Adjustments					683				
Overtime/On Call					-				
Benefits					40,354				
Total Personnel Budget					168,507				

