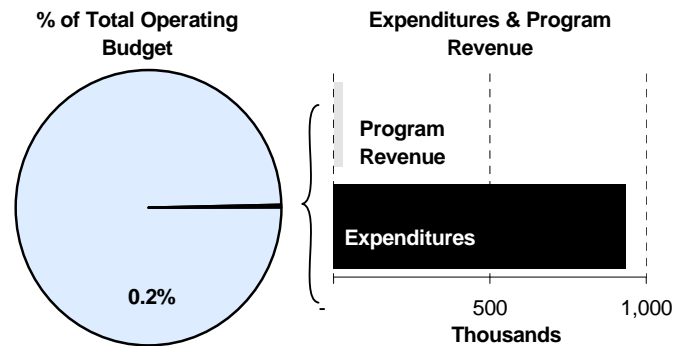
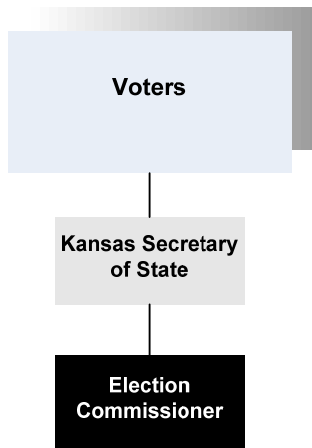




**Bill Gale**  
 Sedgwick County Election Commissioner  
 510 N. Main, Suite 101  
 Wichita, Kansas 67203  
 316-660-7100  
[bgale@sedgwick.gov](mailto:bgale@sedgwick.gov)

**Mission:**

- To provide all eligible Sedgwick County citizens the opportunity to register to vote and participate in an informed manner in simple, accessible and secure elections.



**Program Information**

The Election Commissioner, who is appointed by the Kansas Secretary of State, oversees all voter registration and elections within Sedgwick County. Many State statutes relate to the conduct of elections, but the primary statutes governing Elections are found in Chapter 25 of the Kansas Statutes. Statutes specifically outlining the main duties and responsibilities of the Election Commissioner are in Kansas Statutes 19-3419 through 19-3439. These duties and responsibilities include:

- Establishing, fixing, and proclaiming all of the boundaries of wards and precincts in the County
- Accepting and filing nomination and declaration papers of candidates and declarations of party affiliation
- Providing public notice of elections
- Printing the ballots for all elections
- Performing the duties of the clerk of the court for the trial of contested local elections
- Conducting and controlling all elections within the County

- Verifying petitions
- Maintaining records pertaining to the administration of elections
- Maintaining records pertaining to voter registration

In an effort to make the election process flow as smoothly as possible and to accomplish the goals and the mission of the Election Commissioner, the Election Office receives valuable support from the County. This financial, logistical, personnel and technical support is received from the Board of County Commissioners, the County Manager, other County departments and employees who ensure that elections in Sedgwick County run smoothly. The Election Office is also fortunate to have hundreds of “volunteer” election board workers whose hard work makes sure that holding elections is possible. These board workers assist with advance voting and Election Day voting in multiple capacities, often working long hours to ensure that all registered voters have the opportunity to cast their vote in an election.



**Departmental Sustainability Initiatives**

The Election Office has taken multiple steps to contribute to the County’s sustainability initiative. Economic sustainability is fostered by the Election Office providing more convenient and efficient options for voting. In turn, citizens spend less time and effort casting their vote, causing less disruption in their normal, daily activities. By offering advance voting options, citizens also have the ability to vote on a day when it is convenient for them, or if they wish to avoid the Election Day crowds.

The Election Office strives to mitigate its impact on the environment by working to conserve resources. One way is through the utilization of scanning and other means to reduce the amount of printing and paper used in the Office. The Election Commissioner and staff also coordinate travel and carpool whenever possible to conserve fuel and other travel expenses.

Social equity is an important initiative for the Election Office, as opportunities for voter registration and voting need to be made available to everyone in a fair and equitable manner. In order to provide socially equitable services, voter registration and advance voting applications are available online, as well as at numerous outposts throughout the County, including Quik Trip, Dillons and Kwik Shop businesses. Additionally, voting options include advance voting in-person, advance voting by mail, or attending a strategically located polling place on Election Day.

The Election Commissioner continually seeks efficiencies in departmental operations and in the entire election process to enhance the Office’s financial and institutional viability. In recent years, the Election Office greatly reduced discretionary spending and implemented numerous cost and labor-saving measures in order to maintain and even increase the level of services provided to their customers. One change is to provide more services electronically to decrease the need for

customers to drive to the Election Office for information. The Election Office is also partnering with the Sedgwick County Call Center to provide more efficient and effective services to customers.

**Department Accomplishments**

The 2008 Presidential election saw a record number of voters in Sedgwick County. Of the almost 195,000 that voted 57 percent voted in advance of Election Day. Approximately 70,000 voted in advance by mail and an additional 40,000 advance-voted in person at the Election Office or one of the 15 satellite advance voting locations. On Election Day itself, approximately 85,000 turned out to vote, which made for a very smooth day at polling places around the County, especially for a Presidential election. Advance voting continues to grow in popularity in Sedgwick County and these advance percentages are the highest ever seen in Kansas to date.

The Election Office also continues to work toward the goal of implementing vote centers in the near future. Vote centers would allow any registered voter to vote at any voting location on Election Day instead of having one specific polling location.

**Budget Adjustments**

Changes to the Election Commissioner’s 2010 budget reflect an increase in benefits costs and a 2.0 percent general pay adjustment for employees earning less than \$75,000. No increases were provided for contractals, commodities, and capital equipment from the 2009 Adopted budget from property tax supported funds, with the exception of a \$206,000 adjustment for the gubernatorial election cycle in 2010. More resources are required by the Election Commissioner’s Office in Presidential and gubernatorial election years due to increased voter turnout for these elections. Additionally, 2.5 FTE unfilled temporary Administrative Support positions and 1.0 FTE unfilled Fiscal Associate position are eliminated in the 2010 budget.

**Alignment with County Values**

- **Professionalism** - Elections are conducted efficiently and in an environment of continual improvement in order to provide the greatest access to the process
- **Commitment** - Working hard to make the election process available and convenient for all citizens
- **Honesty** - Elections are conducted in an open and transparent manner

---

**Goals & Initiatives**

- **Provide voter registration to all eligible citizens within Sedgwick County**
- **Expand the awareness and opportunity for advance voting**
- **Increase accessibility and awareness for voters at all voting locations**

---

**Awards & Accreditations**

- Margaret Champ Award from the Wichita Association for the Visually Handicapped for working on voter accessibility



**Significant Adjustments From Previous Budget Year**

<ul style="list-style-type: none"> <li>• Adjustment for gubernatorial election cycle in 2010</li> <li>• Eliminate temporary Administrative Support positions</li> <li>• Eliminate a Fiscal Associate position</li> </ul>	<table border="0"> <tr> <td style="text-align: right;"><b>Expenditures</b></td> <td style="text-align: right;"><b>Revenue</b></td> <td style="text-align: right;"><b>FTEs</b></td> </tr> <tr> <td style="text-align: right;">206,000</td> <td></td> <td style="text-align: right;">(2.50)</td> </tr> <tr> <td style="text-align: right;">(37,926)</td> <td></td> <td style="text-align: right;">(1.00)</td> </tr> </table>	<b>Expenditures</b>	<b>Revenue</b>	<b>FTEs</b>	206,000		(2.50)	(37,926)		(1.00)
<b>Expenditures</b>	<b>Revenue</b>	<b>FTEs</b>								
206,000		(2.50)								
(37,926)		(1.00)								

**Total**      168,074      -      (3.50)

**Budget Summary by Category**

**Budget Summary by Fund**

	2009			2010 Budget	% Chg. 09-10	2010		
	Actual	Adopted	Revised			Expenditures	Revenue	FTEs
<b>Expenditures</b>								
Personnel	482,371	512,666	512,666	506,226	-1.3%	General Fund-110		
Contractual Services	483,935	208,220	183,220	418,902	128.6%			
Debt Service	-	-	-	-				
Commodities	161,408	14,000	39,000	10,000	-74.4%			
Capital Improvements	-	-	-	-				
Capital Equipment	-	1,000	1,000	-	-100.0%			
Interfund Transfers	65,000	-	-	-				
<b>Total Expenditures</b>	<b>1,192,713</b>	<b>735,886</b>	<b>735,886</b>	<b>935,128</b>	<b>27.1%</b>	<b>Total Expenditures</b>	<b>735,886</b>	<b>935,128</b>
<b>Revenue</b>								
Taxes	-	-	-	-				
Intergovernmental	-	-	-	-				
Charges For Service	49,001	24,903	24,903	28,549	14.6%			
Other Revenue	593	350	350	496	41.7%			
<b>Total Revenue</b>	<b>49,594</b>	<b>25,253</b>	<b>25,253</b>	<b>29,045</b>	<b>15.0%</b>			
<b>Full-Time Equivalents (FTEs)</b>	<b>13.50</b>	<b>13.50</b>	<b>13.50</b>	<b>10.00</b>	<b>-25.9%</b>			

**Budget Summary by Program**

Program	Fund	Expenditures			2010 Budget	% Chg. 09-10	Full-Time Equivalents (FTEs)		
		2008 Actual	2009 Adopted	2009 Revised			2009 Adopted	2009 Revised	2010 Budget
Administration	110	805,466	564,609	564,609	620,079	9.8%	10.00	10.00	9.00
Election Operations	110	387,247	171,277	171,277	315,049	83.9%	3.50	3.50	1.00
<b>Total</b>		<b>1,192,713</b>	<b>735,886</b>	<b>735,886</b>	<b>935,128</b>	<b>27.1%</b>	<b>13.50</b>	<b>13.50</b>	<b>10.00</b>



**Personnel Summary by Fund**

Position Title(s)	Fund	Band	Budgeted Personnel Costs			Full-Time Equivalents (FTEs)			
			2009 Adopted	2009 Revised	2010 Budget	2009 Adopted	2009 Revised	2010 Budget	
Temp: Protective Service	110	EXCEPT	1,000	1,000	1,000	1.00	1.00	1.00	
Temp: Administrative Support	110	EXCEPT	-	-	-	2.50	2.50	-	
Chief Deputy Election Commission	110	B323	58,624	59,796	61,590	1.00	1.00	1.00	
Administrative Specialist	110	B219	72,283	74,084	74,084	2.00	2.00	2.00	
Fiscal Associate	110	B216	49,553	54,390	54,390	2.00	2.00	2.00	
Office Specialist	110	B115	66,919	68,758	68,758	2.00	2.00	2.00	
Fiscal Assistant	110	B114	22,266	21,939	-	1.00	1.00	-	
Office Assistant	110	B112	26,764	27,719	27,719	1.00	1.00	1.00	
Election Commissioner	110	APPOINT	73,977	76,566	76,566	1.00	1.00	1.00	
<b>Subtotal</b>					<b>364,107</b>		<b>13.50</b>	<b>13.50</b>	<b>10.00</b>
Add:									
Budgeted Personnel Savings (Turnover)					(3,135)				
Compensation Adjustments					5,731				
Overtime/On Call					1,493				
Benefits					138,030				
<b>Total Personnel Budget</b>					<b>506,226</b>				



**• Administration**

The Election Commissioner is appointed by the Kansas Secretary of State for a four-year term. The Office is responsible for registering citizens to vote, negotiating with other entities for polling location arrangements, and organizing and scheduling employees and volunteers to staff polling places for elections, provide advance ballots, and tabulating the results of voting. Indirect costs for the election process are funded from this program.

**Fund(s): General Fund 110**

66001-110

	2008	2009	2009	2010	% Chg.
	Actual	Adopted	Revised	Budget	09-10
<b>Expenditures</b>					
Personnel	481,344	511,579	511,579	504,473	-1.4%
Contractual Services	97,714	48,030	48,030	105,606	119.9%
Debt Service	-	-	-	-	-
Commodities	161,408	4,000	4,000	10,000	150.0%
Capital Improvements	-	-	-	-	-
Capital Equipment	-	1,000	1,000	-	-100.0%
Interfund Transfers	65,000	-	-	-	-
<b>Total Expenditures</b>	<b>805,466</b>	<b>564,609</b>	<b>564,609</b>	<b>620,079</b>	<b>9.8%</b>
<b>Revenue</b>					
Taxes	-	-	-	-	-
Intergovernmental	-	-	-	-	-
Charges For Service	-	-	-	-	-
Other Revenue	593	350	350	496	41.7%
<b>Total Revenue</b>	<b>593</b>	<b>350</b>	<b>350</b>	<b>496</b>	<b>41.7%</b>
<b>Full-Time Equivalents (FTEs)</b>	<b>10.00</b>	<b>10.00</b>	<b>10.00</b>	<b>9.00</b>	<b>-10.0%</b>

**Goal(s):**

- Provide voter registration to all eligible citizens within Sedgwick County
- Expand the opportunity for Advance Voting
- Increase accessibility and awareness for voters at traditional voting locations

**• Election Operations**

This program is established to capture the direct costs associated with conducting annual elections. The largest expense is for Election Day board worker salary and mileage. These employees are hired on a temporary basis prior to, during and after the election. Also included is printing of ballots, payment to voting places, set up and delivery of voting machines, administrative costs, voter registration, and voter outreach.

This program also captures the revenue generated by fees candidates pay to file for election and reimbursements received for special elections. These fees are not enough to cover the cost of elections and the majority of funding comes from the County's general fund.

**Fund(s): General Fund**

	2008	2009	2009	2010	% Chg.
	Actual	Adopted	Revised	Budget	09-10
<b>Expenditures</b>					
Personnel	1,027	1,087	1,087	1,753	61.3%
Contractual Services	386,220	160,190	135,190	313,296	131.7%
Debt Service	-	-	-	-	-
Commodities	-	10,000	35,000	-	-100.0%
Capital Improvements	-	-	-	-	-
Capital Equipment	-	-	-	-	-
Interfund Transfers	-	-	-	-	-
<b>Total Expenditures</b>	<b>387,247</b>	<b>171,277</b>	<b>171,277</b>	<b>315,049</b>	<b>83.9%</b>
<b>Revenue</b>					
Taxes	-	-	-	-	-
Intergovernmental	-	-	-	-	-
Charges For Service	49,001	24,903	24,903	28,549	14.6%
Other Revenue	-	-	-	-	-
<b>Total Revenue</b>	<b>49,001</b>	<b>24,903</b>	<b>24,903</b>	<b>28,549</b>	<b>14.6%</b>
<b>Full-Time Equivalents (FTEs)</b>	<b>3.50</b>	<b>3.50</b>	<b>3.50</b>	<b>1.00</b>	<b>-71.4%</b>

**Goal(s):**

- Coordinate sufficient numbers of volunteers and temporary employees to staff all voting locations
- Increase Advance Voting participation rates over previous years of same election type

