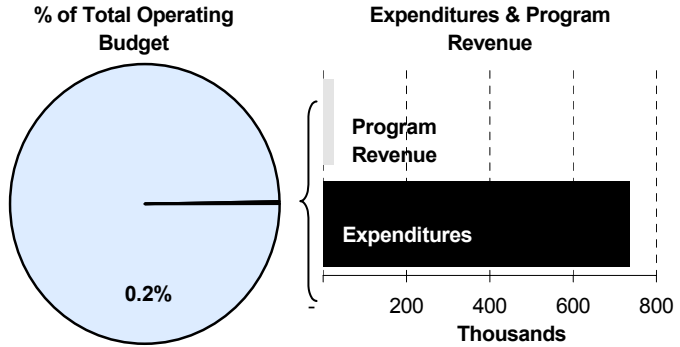
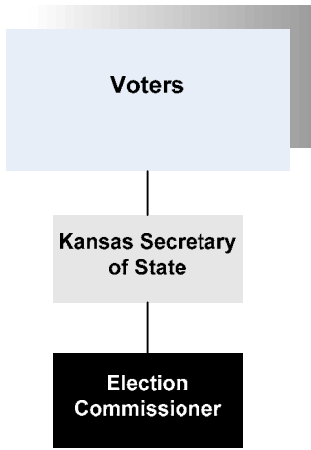




**Bill Gale**  
 Sedgwick County Election Commissioner  
 510 N. Main, Suite 101  
 Wichita, Kansas 67203  
 316-660-7100  
[bgale@sedgwick.gov](mailto:bgale@sedgwick.gov)

**Mission:**

- To provide all eligible Sedgwick County citizens the opportunity to register to vote and participate in an informed manner in simple, accessible and secure elections.



**Program Information**

The Election Commissioner, who is appointed by the Kansas Secretary of State, oversees all voter registration and elections within Sedgwick County. Many State statutes relate to the conduct of elections, but the primary statutes governing Elections are found in Chapter 25 of the Kansas Statutes. Statutes specifically outlining the main duties and responsibilities of the Election Commissioner are in Kansas Statutes 19-3419 through 19-3439. These duties and responsibilities include:

- establishing, fixing, and proclaiming all of the boundaries of wards and precincts in the County
- accepting and filing nomination and declaration papers of candidates and declarations of party affiliation
- providing public notice of elections
- printing the ballots for all elections
- performing the duties of the clerk of the court for the trial of contested local elections
- conducting and controlling all elections within the County

- verifying petitions
- maintaining records pertaining to the administration of elections
- maintaining records pertaining to voter registration.

In an effort to make the election process flow as smoothly as possible and to accomplish the goals and the mission of the Election Commissioner, the Election Office receives valuable support from the County. This financial, logistical, personnel and technical support is received from the Board of County Commissioners, the County Manager, other County departments and employees who ensure that elections in Sedgwick County run smoothly. The Election Office is also fortunate to have hundreds of “volunteer” election board workers whose hard work makes sure that holding elections is possible. These board workers assist with advance voting and Election Day voting in multiple capacities, often working long hours to ensure that all registered voters have the opportunity to place their vote in an election.

**Departmental Sustainability Initiatives**

The Election Office has taken multiple steps to contribute to the County’s sustainability initiative. Economic sustainability is fostered by the Election Office providing more convenient and efficient options for voting. In turn, citizens spend less time and effort casting their vote, causing less disruption in their normal, daily activities. By offering advance voting options, citizens also have the ability to vote on a day that is convenient for them, or if they wish to avoid the Election Day crowds.

The Election Office strives to mitigate its impact on the environment by working to conserve resources. One way is through the utilization of scanning and other means to reduce the amount of printing and paper used in the Office. The Election Commissioner and staff also coordinate travel and carpool whenever possible to conserve fuel and other travel expenses.

Social equity is an important initiative for the Election Office, as opportunities for voter registration and voting need to be made available to everyone in a fair and equitable manner. In order to provide socially equitable services, voter registration and advance voting applications are available online, as well as at numerous outposts throughout the County, including Quik Trip, Dillons and Kwik Shop businesses. Additionally, voting options include advance voting in-person, advance voting by mail, or attending a strategically located polling place on Election Day.

The Election Commissioner continually seeks efficiencies in departmental operations and in the entire election process to enhance the Office’s financial and institutional viability. In recent years, the Election Office greatly reduced discretionary spending and implemented numerous cost and labor-saving measures in order to maintain and even increase the level of services provided to their customers. One change has been to provide more services electronically to decrease the need for

customers to drive to the Election Office for information. The Election Office has also partnered with the Sedgwick County Call Center to provide more efficient and effective services to customers.

**Department Accomplishments**

The Election Office continues to work toward the goal of implementing vote centers in the near future. Vote centers would allow any registered voter to vote at any voting location on Election Day instead of having one specific polling location. This will provide greater convenience and choice to voters in Sedgwick County, and will allow the Election Office to use its resources more efficiently.

The Election Office also continues to promote and encourage advance voting in Sedgwick County. Multiple options are made available to citizens include advance voting by mail or advance voting in person at one of the advance voting centers.

**Budget Adjustments**

The Election Commissioner’s budget is cyclical based on Presidential and gubernatorial election years. Since fewer resources are required in a non-Presidential election year, the Election Commissioner’s budget was reduced by \$211,873 from the Adopted 2008 budget. The Office’s departmental fleet charges were also decreased by \$2,414.

An upcoming challenge faced by Election Office is acquiring enough qualified “volunteer” election board workers for General Elections held in November. Two pay raises in the last three years for election board workers and now the ability to work half-days (8 hours) on Election Day should be helpful in addressing this challenge. Recruitment efforts are being undertaken through universities, high schools, corporations, and other community groups to find the necessary number of board workers. The Election Office is also providing workers with more intensive and extensive training.

**Alignment with County Values**

- **Professionalism** - Elections are conducted efficiently and in an environment of continual improvement in order to provide the greatest access to the process
- **Commitment** - Working hard to make the election process available and convenient for all citizens
- **Honesty** - Elections are conducted in an open and transparent manner

---

**Goals & Initiatives**

- **Provide voter registration to all eligible citizens within Sedgwick County**
- **Expand the awareness and opportunity for advance voting**
- **Increase accessibility and awareness for voters at all voting locations**

---

**Awards & Accreditations**

- Margaret Champ Award from the Wichita Association for the Visually Handicapped for working on voter accessibility

**Budget Adjustments From Previous Fiscal Year**

- Adjustment for non-Presidential election year

Expenditures	Revenue	FTEs
(211,873)		

<b>Total</b>	(211,873)	-	-
--------------	-----------	---	---

**Budget Summary by Category**

**Budget Summary by Fund**

Expenditures	2007	2008	2008	2009	% Chg.	Expenditures	2008	2009
	Actual	Adopted	Revised				Budget	08-09
Personnel	482,047	494,074	494,074	512,665	3.8%	General Fund	993,826	735,885
Contractual Services	328,812	439,752	439,752	208,220	-52.7%			
Debt Service	-	-	-	-				
Commodities	18,866	60,000	60,000	14,000	-76.7%			
Capital Improvements	-	-	-	-				
Capital Equipment	630	-	-	1,000				
Interfund Transfers	-	-	-	-				
<b>Total Expenditures</b>	<b>830,355</b>	<b>993,826</b>	<b>993,826</b>	<b>735,885</b>	<b>-26.0%</b>	<b>Total Expenditures</b>	<b>993,826</b>	<b>735,885</b>
<b>Revenue</b>								
Taxes	-	-	-	-				
Intergovernmental	-	-	-	-				
Charges For Service	111,203	25,696	25,696	24,903	-3.1%			
Other Revenue	330	1,248	1,248	350	-71.9%			
<b>Total Revenue</b>	<b>111,533</b>	<b>26,944</b>	<b>26,944</b>	<b>25,253</b>	<b>-6.3%</b>			
<b>Full-Time Equivalents (FTEs)</b>	<b>13.50</b>	<b>13.00</b>	<b>13.50</b>	<b>13.50</b>	<b>0.0%</b>			

**Budget Summary by Program**

Program	Fund	Expenditures				2009	% Chg.	Full-Time Equivalents (FTEs)		
		2007	2008	2008	2009			2008	2008	2009
		Actual	Adopted	Revised	Budget	08-09	Adopted	Revised	Budget	
Election Commissioner	110	510,617	608,511	608,511	564,609	-7.2%	9.00	10.00	10.00	
Election Direct Costs	110	319,738	385,315	385,315	171,277	-55.5%	4.00	3.50	3.50	
<b>Total</b>		<b>830,355</b>	<b>993,826</b>	<b>993,826</b>	<b>735,885</b>	<b>-26.0%</b>	<b>13.00</b>	<b>13.50</b>	<b>13.50</b>	

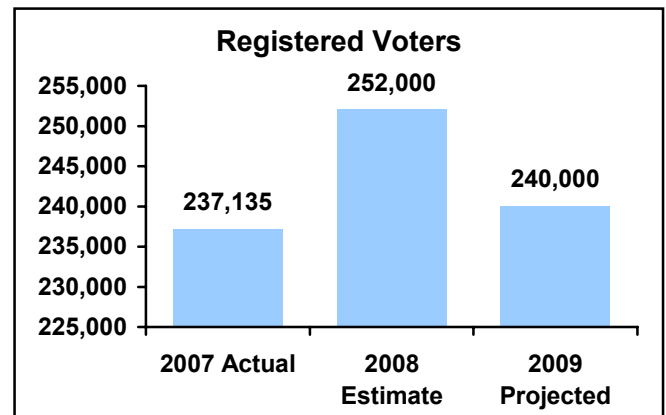


**PERFORMANCE MEASURE HIGHLIGHTS**

The following chart illustrates performance measure highlights of the Election Commissioner’s Office.

**Registered Voters in Sedgwick County -**

- Measure of the number of voters registered to vote in Sedgwick County. This measure helps determine the extent to which the Election Commissioner is providing citizens the opportunity to register to vote in a simple and accessible manner.



**Department Performance Measures**

Key Performance Indicator	2007 Actual	2008 Est.	2009 Proj.
Registered voters in Sedgwick County	237,135	252,000	240,000

**Other Performance Measures**

Voter participation rate for April/November elections	24.00%	80.00%	15.00%
Number of website hits	35,874	72,000	36,000
Number of advance ballots cast in April/November elections	10,564	80,640	10,800
Number of permanent FTE’s	10	10	10
Number of polling places on April/November election day	63	63	63
Number of registered voters per FTE	23,714	25,200	24,000
Number of April/November voters per voting machine	127.5	344.6	120.0
Number of recounts processed	1	0	0

**• Election Commissioner**

The Election Commissioner is appointed by the Kansas Secretary of State for a four-year term. The Office is responsible for registering citizens to vote, negotiating with other entities for polling location arrangements, and organizing and scheduling employees and volunteers to staff polling places for elections, provide advance ballots, and tabulating the results of voting. Indirect costs for the election process are funded from this program.

**Fund(s): General Fund 110**

66001-110

	2007	2008	2008	2009	% Chg.
	Actual	Adopted	Revised	Budget	08-09
<b>Expenditures</b>					
Personnel	456,285	461,511	461,511	511,579	10.8%
Contractual Services	49,630	87,000	87,000	48,030	-44.8%
Debt Service	-	-	-	-	
Commodities	4,072	60,000	60,000	4,000	-93.3%
Capital Improvements	-	-	-	-	
Capital Equipment	630	-	-	1,000	
Interfund Transfers	-	-	-	-	
<b>Total Expenditures</b>	<b>510,617</b>	<b>608,511</b>	<b>608,511</b>	<b>564,609</b>	<b>-7.2%</b>
<b>Revenue</b>					
Taxes	-	-	-	-	
Intergovernmental	-	-	-	-	
Charges For Service	-	1,040	1,040	-	-100.0%
Other Revenue	330	1,248	1,248	350	-71.9%
<b>Total Revenue</b>	<b>330</b>	<b>2,288</b>	<b>2,288</b>	<b>350</b>	<b>-84.7%</b>
<b>Full-Time Equivalents (FTEs)</b>	<b>10.00</b>	<b>9.00</b>	<b>10.00</b>	<b>10.00</b>	<b>0.0%</b>

**Goal(s):**

- Provide voter registration to all eligible citizens within Sedgwick County
- Expand the opportunity for Advance Voting
- Increase accessibility and awareness for voters at traditional voting locations

**• Election Direct Costs**

This program is established to capture the direct costs associated with conducting annual elections. The largest expense is for Election Day board worker salary and mileage. These employees are hired on a temporary basis prior to, during and after the election. Also included is printing of ballots, payment to voting places, set up and delivery of voting machines, administrative costs, voter registration, and voter outreach.

This program also captures the revenue generated by fees candidates pay to file for election and reimbursements received for special elections. These fees are not enough to cover the cost of elections and the majority of funding comes from the County's general fund.

**Fund(s): General Fund 110**

	2007	2008	2008	2009	% Chg.
	Actual	Adopted	Revised	Budget	08-09
<b>Expenditures</b>					
Personnel	25,761	32,563	32,563	1,087	-96.7%
Contractual Services	279,182	352,752	352,752	160,190	-54.6%
Debt Service	-	-	-	-	
Commodities	14,794	-	-	10,000	
Capital Improvements	-	-	-	-	
Capital Equipment	-	-	-	-	
Interfund Transfers	-	-	-	-	
<b>Total Expenditures</b>	<b>319,738</b>	<b>385,315</b>	<b>385,315</b>	<b>171,277</b>	<b>-55.5%</b>
<b>Revenue</b>					
Taxes	-	-	-	-	
Intergovernmental	-	-	-	-	
Charges For Service	111,203	24,656	24,656	24,903	1.0%
Other Revenue	-	-	-	-	
<b>Total Revenue</b>	<b>111,203</b>	<b>24,656</b>	<b>24,656</b>	<b>24,903</b>	<b>1.0%</b>
<b>Full-Time Equivalents (FTEs)</b>	<b>3.50</b>	<b>4.00</b>	<b>3.50</b>	<b>3.50</b>	<b>0.0%</b>

**Goal(s):**

- Coordinate sufficient numbers of volunteers and temporary employees to staff all voting locations
- Increase Advance Voting participation rates over previous years of same election type

