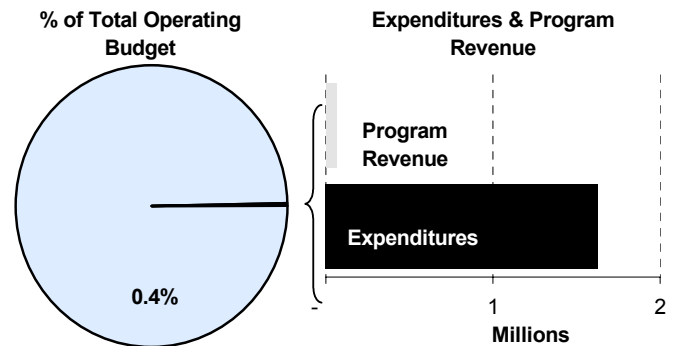
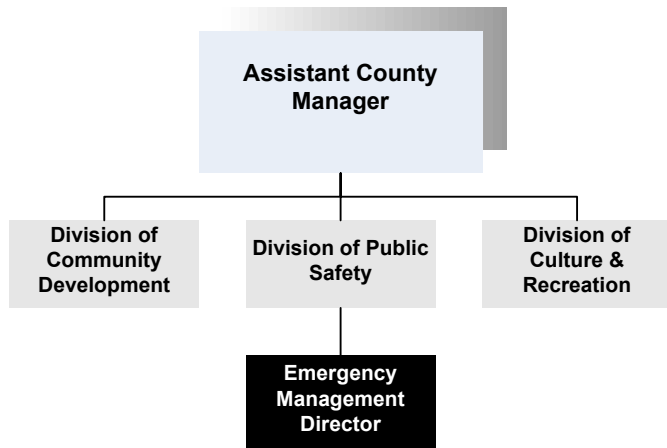




Randy Duncan
 Emergency Management Director
 714 N. Main
 Wichita, Kansas 67203
 316-660-5959
rduncan@sedgwick.gov

Mission:

- Sedgwick County Emergency Management exists to help people, organizations (governmental and non-governmental) and businesses prepare for, respond to, recover from and mitigate disasters – whether natural, technological, or homeland security.



Program Information

Sedgwick County Emergency Management emphasizes planning, preparation, and coordination of local governments' efforts in dealing with all types of emergencies and hazards, natural or man-made, which might affect citizens of Sedgwick County. This preparation is necessary to improve the community's overall coordination and ongoing preparedness. Emergency Management prepares for what we hope never happens and provides structure and coordination when it does. The Department of Homeland Security is the major grantor for Emergency Management.

By state statute (K.S.A. 48-929 (a)), the entire county (including municipal governments) is under the jurisdiction of the Department. Specifically, the state statute reads, "Except as otherwise provided in this act, each county or inter-jurisdictional disaster agency shall have jurisdiction over and serve all of each county included thereunder"(K.S.A 48-929(a)). The benefit to Sedgwick County is a well planned and coordinated response to and recovery from emergencies and

disasters. This planning and coordination helps reduce injury and deaths and conserve property which might otherwise be damaged or destroyed in disasters or emergencies.

The Department of Emergency Management combines the efforts of a small office staff and volunteers in several different groups, each providing various services to the community. The volunteer groups are:

- Wichita/Sedgwick County Fire Reserves
- Radio Amateur Civil Emergency Service
- Emergency Support Team
- K-9 Search Team

The five volunteer groups spend thousands of hours each year training for and responding to emergency and disaster situations. Volunteers provide assistance to emergency service providers in various cities within Sedgwick County, as well as the County itself, in several vital areas.



In addition to collaborating with volunteer groups, Sedgwick County Emergency Management fosters a partnership with the Kansas Division of Emergency Management. Communication and exchange of information between jurisdictions assists in readying a response to emergency situations.

Departmental Sustainability Initiatives

Sedgwick County Emergency Management has the resources, both intellectual and tangible, to respond to disasters on all levels. The ability to respond to, recover from and mitigate disasters of all types – natural, technological, and homeland security – provides the regions current and future economic partners with piece of mind that their investment will be protected.

The Division works to mitigate its impact on the environment by creating plans to respond to disasters that include hazardous material accidents. In the event of a hazardous material accident, Emergency Management has staff and equipment to respond quickly and reduce the impact on citizens and the environment. Additionally, Emergency Management works with outside agencies following a hazardous materials event to restore the affected area.

Social equity is a key to Emergency Management service provision. Response to a disaster event is provided in a professional and timely matter no matter the gender, race, national origin, age or religious preference of the population being served. Emergency preparedness information is provided to the public in educational programming as well as on the division’s webpage. The Department strives to inform as many citizens as possible of the safety preparations that can be made to ready their families for disasters of all kinds.

With ever dwindling federal dollars available for local disaster response, it is imperative for Sedgwick County Emergency Management to be fiscally responsible. In 2003, Sedgwick County was able to secure almost

\$1,000,000 in Homeland Security funding, however that amount has been reduced to almost nothing. In response, grants are constantly being applied for and secured to offset loss in other funding streams.

Department Accomplishments

In 2008, the Department secured a Mitigation Grant from the Department of Homeland Security/Federal Emergency Management Agency. The program makes available seven percent of the funds expended in a disaster declaration for mitigation activities. An authorized activity for the funds is the creation or update of a Hazard Mitigation Plan as required under the Disaster Mitigation Act of 2000. Funding will be used to hire a consultant to perform an update of the existing Sedgwick County Mitigation Plan. The grant is providing 75 percent of the funds necessary for the update, while the remaining 25 percent match will be supplied by the Kansas Division of Emergency Management. The securing of these funds will allow the project to be completed without the use of Sedgwick County local tax dollars.

Alignment with County Values

- **Equal Opportunity –**
Emergency Management is prepared to provide disaster response no matter the age, gender, national origin, or religious preference of the population being served
- **Commitment -**
Emergency Management staff completes regular continued education and training in order to provide adequate response to all disaster situations
- **Open Communication -**
Emergency Management fosters partnerships with numerous local and state agencies to provide the best possible disaster response

Goals & Initiatives

- **Maintain an effective, well trained and equipped staff**
- **Effectively assist people, organizations, and businesses to prepare for, respond to, mitigate and recover from disasters of all types**
- **Maintain an effective and well equipped facility**

Budget Adjustments

Adjustments in the 2009 Budget include three Capital Improvement Projects: Design for Heartland Preparedness Center at \$213,456; Installation of outdoor warning devices at \$45,895; and Construction of and repairs to the outdoor warning and reportback system at \$857,307. The Heartland Preparedness Center is joint project between the Kansas National Guard, the U.S. Marine Reserve Command, the City of Wichita and Sedgwick County. The Center will promote interagency communication and deployment in preparing for disasters in the community.

Budget Adjustments From Previous Fiscal Year

- CIP Project: Design for Heartland Preparedness Center
- CIP Project: Install Outdoor Warning Devices
- CIP Project: Outdoor Warning and Reportback System

Expenditures	Revenue	FTEs
213,456		
45,895		
857,307		

Total 1,116,658 - -

Budget Summary by Category

Budget Summary by Fund

Expenditures	2007	2008	2008	2009	% Chg.	Expenditures	2008	2009
	Actual	Adopted	Revised				Budget	08-09
Personnel	254,817	262,887	283,587	278,640	-1.7%	General Fund	456,506	1,569,936
Contractual Services	158,918	406,611	416,211	203,181	-51.2%	Emer Mgmt - Grants	321,844	59,074
Debt Service	-	-	-	-	-			
Commodities	21,958	19,270	33,994	30,530	-10.2%			
Capital Improvements	-	44,558	-	1,116,658				
Capital Equipment	-	-	-	-				
Interfund Transfers	43,260	-	44,558	-	-100.0%			
Total Expenditures	478,954	733,326	778,350	1,629,009	109.3%	Total Expenditures	778,350	1,629,009
Revenue								
Taxes	-	-	-	-				
Intergovernmental	108,982	297,146	332,146	59,630	-82.0%			
Charges For Service	(321)	2,040	2,040	(321)	-115.7%			
Other Revenue	2,439	4,338	4,338	2,544	-41.3%			
Total Revenue	111,099	303,524	338,524	61,853	-81.7%			
Full-Time Equivalents (FTEs)	4.00	4.00	4.00	4.00	0.0%			

Budget Summary by Program

Program	Fund	Expenditures				2009	% Chg.	Full-Time Equivalents (FTEs)		
		2007	2008	2008	2009			2008	2008	2009
		Actual	Adopted	Revised	Budget	08-09	Adopted	Revised	Budget	
Emergency Management	110	406,110	449,236	449,236	1,550,936	245.2%	3.00	3.00	3.00	
Hazardous Materials	110	7,295	7,270	7,270	19,000	161.3%	-	-	-	
EM other grants	257	65,549	276,820	321,844	59,074	-81.6%	1.00	1.00	1.00	
Total		478,954	733,326	778,350	1,629,009	109.3%	4.00	4.00	4.00	

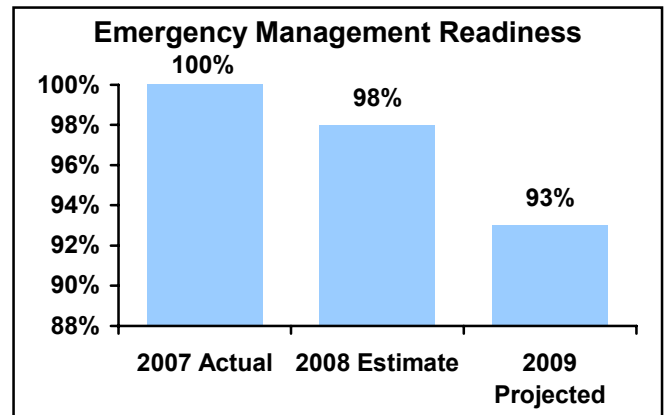


PERFORMANCE MEASURE HIGHLIGHTS

The following chart illustrates performance measure highlights of the Emergency Management Department.

Emergency Management Readiness -

- Measure of the percent of time the Sedgwick County Emergency Management is prepared to respond to an emergency event.



Department Performance Measures

Key Performance Indicator	2007 Actual	2008 Est.	2009 Proj.
Emergency Management Readiness	100%	98%	93%
Other Performance Measures			
Outdoor Warning Device Availability	80%	92%	95%
User Ratings of Emergency Operations Center	100%	100%	100%
Percentage of plans current to Federal Standards	100%	100%	100%
Systems Uptime	100%	100%	100%
Emergency Operation Command Ready for Use	100%	100%	100%

• Emergency Management

Emergency Management Administration provides general management and support to the department and related volunteer programs. Major programs operated under this fund center include the Emergency Operations Center (EOC) and the Outdoor Warning Device (Siren) program. Volunteer programs include the Radio Amateur Civil Emergency Service (RACES), Emergency Service Unit (ESU), the Wichita/Sedgwick County Fire Reserve (WSCFR), and the Sedgwick County Canine Search and Rescue Team.

Fund(s): General Fund 110

13001-110

	2007	2008	2008	2009	% Chg.
	Actual	Adopted	Revised	Budget	08-09
Expenditures					
Personnel	205,698	214,067	214,067	219,567	2.6%
Contractual Services	148,424	173,611	173,611	196,711	13.3%
Debt Service	-	-	-	-	-
Commodities	8,727	17,000	17,000	18,000	5.9%
Capital Improvements	-	44,558	-	1,116,658	-
Capital Equipment	-	-	-	-	-
Interfund Transfers	43,260	-	44,558	-	-100.0%
Total Expenditures	406,110	449,236	449,236	1,550,936	245.2%
Revenue					
Taxes	-	-	-	-	-
Intergovernmental	13,982	25,750	25,750	14,932	-42.0%
Charges For Service	-	-	-	-	-
Other Revenue	2,026	4,338	4,338	2,108	-51.4%
Total Revenue	16,008	30,088	30,088	17,040	-43.4%
Full-Time Equivalents (FTEs)	3.00	3.00	3.00	3.00	0.0%

Goal(s):

- To maintain an effective, well-trained and equipped staff
- To maintain an effective and well-equipped facility
- To effectively prepare for, respond to, and recover from disasters of all types

• Hazardous Materials

The Wichita / Sedgwick County Hazardous Materials Team is funded for its operation through the Emergency Management budget. The team consists of members of the Wichita Fire Department and Sedgwick County Fire District #1. Additional personnel from the team come from the City of Wichita Department of Environmental Health; Sedgwick County Emergency Medical Services; and McConnell Air Force Base.

Fund(s): General Fund 110

13002-110

	2007	2008	2008	2009	% Chg.
	Actual	Adopted	Revised	Budget	08-09
Expenditures					
Personnel	-	-	-	-	-
Contractual Services	6,408	5,000	5,000	6,470	29.4%
Debt Service	-	-	-	-	-
Commodities	887	2,270	2,270	12,530	452.0%
Capital Improvements	-	-	-	-	-
Capital Equipment	-	-	-	-	-
Interfund Transfers	-	-	-	-	-
Total Expenditures	7,295	7,270	7,270	19,000	161.3%
Revenue					
Taxes	-	-	-	-	-
Intergovernmental	-	-	-	-	-
Charges For Service	(321)	2,040	2,040	(321)	-115.7%
Other Revenue	413	-	-	436	-
Total Revenue	91	2,040	2,040	115	-94.4%
Full-Time Equivalents (FTEs)	-	-	-	-	-

Goal(s):

- To provide for new equipment and maintenance of existing equipment utilized in the operation of the Wichita / Sedgwick County Hazardous Materials Team
- To provide for initial training for new members of the Wichita / Sedgwick County Hazardous Materials Team
- To provide for on-going training for members of the Wichita / Sedgwick County Hazardous Materials Team



• Emergency Management Other Grants

These other grants are typically provided by the Department of Homeland Security through the Kansas Division of Emergency Management to enhance the preparedness of Sedgwick County. Such grants include the Emergency Management Planner. The Emergency Management Planner is responsible for the creation and maintenance of all-hazards analysis plans, commodity flow surveys, gap analysis plans, and hazardous materials plans in Sedgwick County. This includes the creation and maintenance of a Computer-Aided Management of Emergency Operations (CAMEO) database and mapping system identifying critical infrastructure concerns, susceptible populace areas, potential threats to the communities, and other Homeland Security issues. Additional responsibilities are the mitigation and business continuity planning for potential hazards possibly impacting businesses and communities as a result of cascading disaster events.

Fund(s): Emer Mgmt - Grants 257

	2007	2008	2008	2009	% Chg.
	Actual	Adopted	Revised	Budget	08-09
Expenditures					
Personnel	49,119	48,820	69,520	59,074	-15.0%
Contractual Services	4,086	228,000	237,600	-	-100.0%
Debt Service	-	-	-	-	-
Commodities	12,344	-	14,724	-	-100.0%
Capital Improvements	-	-	-	-	-
Capital Equipment	-	-	-	-	-
Interfund Transfers	-	-	-	-	-
Total Expenditures	65,549	276,820	321,844	59,074	-81.6%
Revenue					
Taxes	-	-	-	-	-
Intergovernmental	95,000	271,396	306,396	44,698	-85.4%
Charges For Service	-	-	-	-	-
Other Revenue	-	-	-	-	-
Total Revenue	95,000	271,396	306,396	44,698	-85.4%
Full-Time Equivalents (FTEs)	1.00	1.00	1.00	1.00	0.0%

Goal(s):

- To complete an effective hazardous materials response plan for Sedgwick County
- To coordinate an update of the Sedgwick County Local Emergency Operations Plan as directed by the Kansas Planning Standards document
- To provide for equipment and services as directed by the Kansas Division of Emergency Management

