



### Where is Sedgwick County, Kansas?

Sedgwick County was established in 1867 and is located in south central Kansas. It encompasses 1,008 square miles. The County seat of government is Wichita, the largest city in the State of Kansas. Wichita is known as the “Air Capital of the World” for its internationally recognized concentration of military, commercial, and general aviation airplane production.

### How is Sedgwick County governed?

Sedgwick County voters elect a five-member Board of County Commissioners (BoCC). Commissioners serve as fulltime County officials and meet in regular sessions once each week. The Board performs both executive and legislative functions and is responsible for policy decisions. The Board also governs Sedgwick County Fire District # 1, which is a separate special-purpose local government. In addition to the BoCC, voters separately elect a County Clerk, County Treasurer, Register of Deeds, Sheriff and District Attorney.

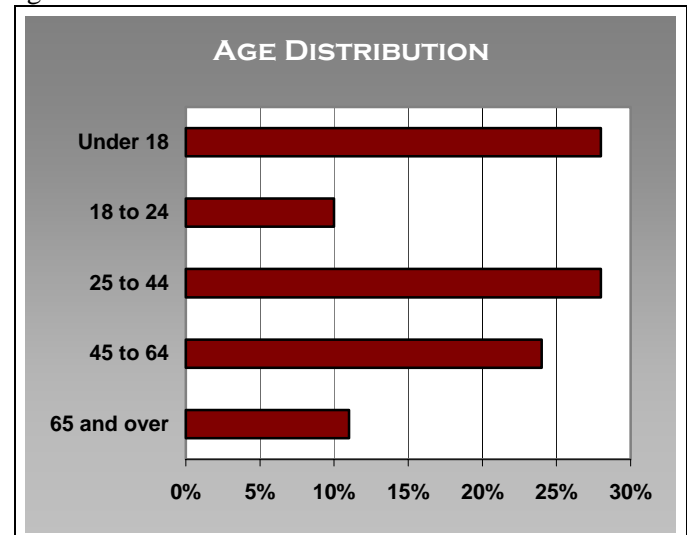
The Board appoints a professional County Manager to administer most County functions including the Fire District. Sedgwick County employs approximately 2,827 full-time employees.

Other than County government, there are more than 109 separate taxing entities that levy property taxes in Sedgwick County, including 20 cities, 27 townships, and 20 school districts. Water, cemetery, drainage, fire, improvement, and library districts also levy taxes.

### Who lives in Sedgwick County?

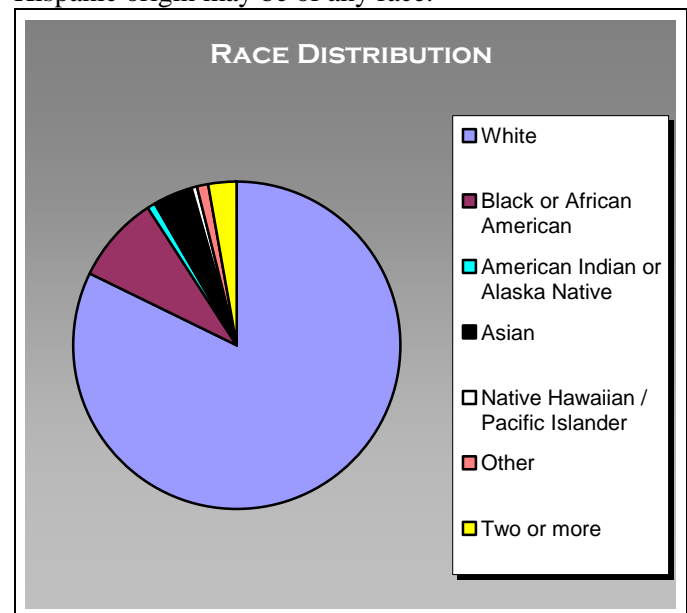
The County is the second most populous of the 105 counties in Kansas with an estimated population of 463,802 in 2004.

According to the [U.S. Census Bureau, 2004 American Community Survey](#), Sedgwick County has a relatively young age distribution, as 66 percent of the population was under 44 years of age. Those 65 and older were 11 percent; 24 percent ages 45 to 64; 28 percent ages 25 to 44; 10 percent ages 18 to 24, and 28 percent under the age of 18.



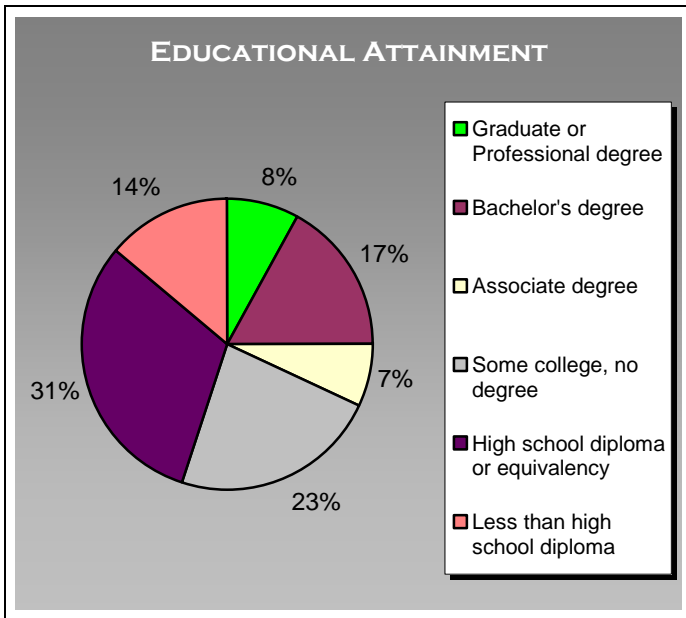
Source: American Community Survey, 2004

The racial makeup of the community is 85 percent White; 9 percent Black or African-American; 1 percent American Indian or Alaska Native; 4 percent Asian; less than .5 percent Native Hawaiian and Other Pacific Islander, and 1 percent were some other race. Three percent reported two or more races. Ten percent of the people in Sedgwick County were Hispanic. People of Hispanic origin may be of any race.



Source: American Community Survey, 2004

Of those over 25 years of age in Sedgwick County, 86 percent had at least graduated from high school and 25 percent had a bachelor's degree or higher. Those with less than a high school diploma made up 14 percent of the population.

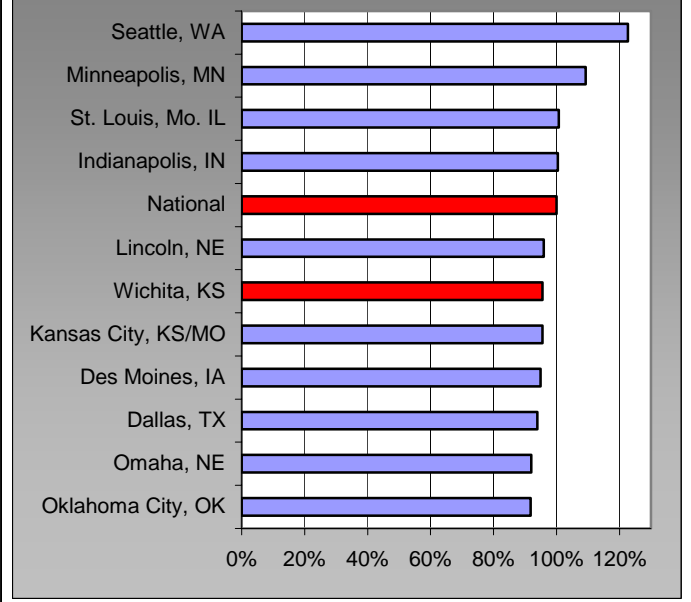


In 2004 there were 183,000 households in Sedgwick County with an average size of 2.5 people. Families, which include married-couple families (49 percent) and other families (15 percent), made up 65 percent of the households in Sedgwick County. Nonfamily households made up 35 percent of all households in Sedgwick County and consisted of mostly people living alone, but also included some households where no one was related to the householder.

The median household income in Sedgwick County was \$41,545 with 82 percent of households receiving earnings and 13 percent received retirement income other than Social Security. Twenty-five percent of the households received Social Security with an average income of \$13,386. Some households received income from more than one source.

According to the Council for Community and Economic Research (ACCRA) the overall cost of living for the Wichita MSA is 95.5, or over four percent below the national average. Housing is bargain in the Wichita market as the median selling price of existing single-family homes in the Wichita metro area was \$106,300 in the second quarter of 2005 (National Association of Realtors).

### OVERALL COST OF LIVING INDEX



### What do people in Sedgwick County do for a living?

As of 2004 Sedgwick County averaged a civilian labor force of 241,834 persons. According to the Kansas Department of Labor, the unemployment rate for Sedgwick County is 6.2 percent, not seasonally adjusted.

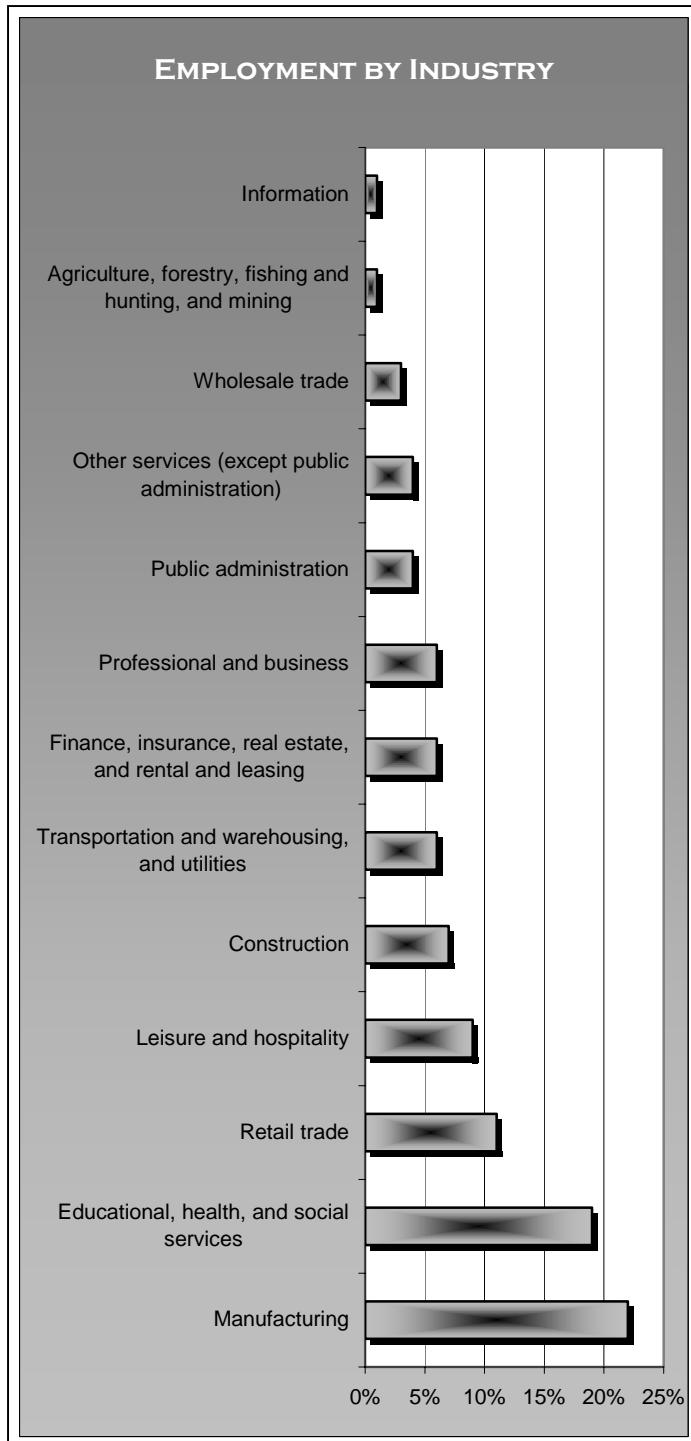
The ten largest employers in Sedgwick County as of February 18, 2005 were:

Company	Type of Business	Full Time Employees
Boeing Aircraft Wichita	Aircraft Manufacturing	12,300
Cessna Aircraft Co	Aircraft Manufacturing	8,500
Raytheon Aircraft Co	Aircraft Manufacturing	6,462
United States Government	Federal Government	5,435
Via Christi Regional Medical Center	Health Care	5,025
USD 259 Wichita	Public School System	4,842
State of Kansas	State Government	3,849
City of Wichita	City Government	3,057
Sedgwick County Government	County Government	2,790
Bombardier Aerospace Learjet, Inc	Aircraft Manufacturing	2,560

Source: Wichita Business Journal

The people of Sedgwick County are employed in a wide variety of industries with manufacturing being the largest at 22 percent. The other most common industries were: Educational, health and social services, 19 percent; Retail trade, 11 percent; Leisure and hospitality, 9 percent; Construction, 7 percent; Transportation,

warehousing and utilities, 6 percent; Professional and business services, 6 percent; Finance, insurance, real estate, and rental and leasing, 6 percent; Public administration, 4 percent; Other services, 4 percent; Wholesale trade, 3 percent; Agriculture, forestry, fishing and hunting, and mining, 1 percent; and Information, 1 percent.



### What is the geography/climate of Sedgwick County?

The topography of Sedgwick County is characterized by the extreme flatness of the broad Arkansas River valley and the gently rolling slopes rising to the uplands adjacent to the valley. The highest point in the County is on the west edge, about five miles southwest of Andale, and is about 1,540 feet above sea level. The lowest point is where the Arkansas River leaves the County to the south and is about 1,220 feet above sea level (Kansas Geological Survey, [www.kgs.ku.edu](http://www.kgs.ku.edu))

Kansas is among the top 10 "sunniest" states in the country with more sunny days than Florida. Wichita averages 128 clear days and 97 partly cloudy days per year, for a total of 225 days of sunshine (Wichita Information, <http://wichitainfo.net>).

Summers are typically reasonably warm with steady wind and relatively low humidity. Temperatures above 90 degrees occur an average of 63 days per year. Winters are usually mild with short periods of very cold. Temperatures below zero occur about two days per year.

AVERAGE TEMPERATURE (° F)			
	Average Daily Low	Average Daily	Average Daily High
<b>Annual</b>	<b>45.0</b>	<b>56.2</b>	<b>67.4</b>
January	19.2	29.5	39.8
February	23.7	34.8	45.9
March	33.6	45.4	57.2
April	44.5	56.4	68.3
May	54.3	65.6	76.9
June	64.6	75.7	86.8
July	69.9	81.4	92.8
August	67.9	79.3	90.7
September	59.2	70.3	81.4
October	46.6	58.6	70.6
November	33.9	44.6	55.3
December	23.0	33.0	43.0

Source: National Weather Service

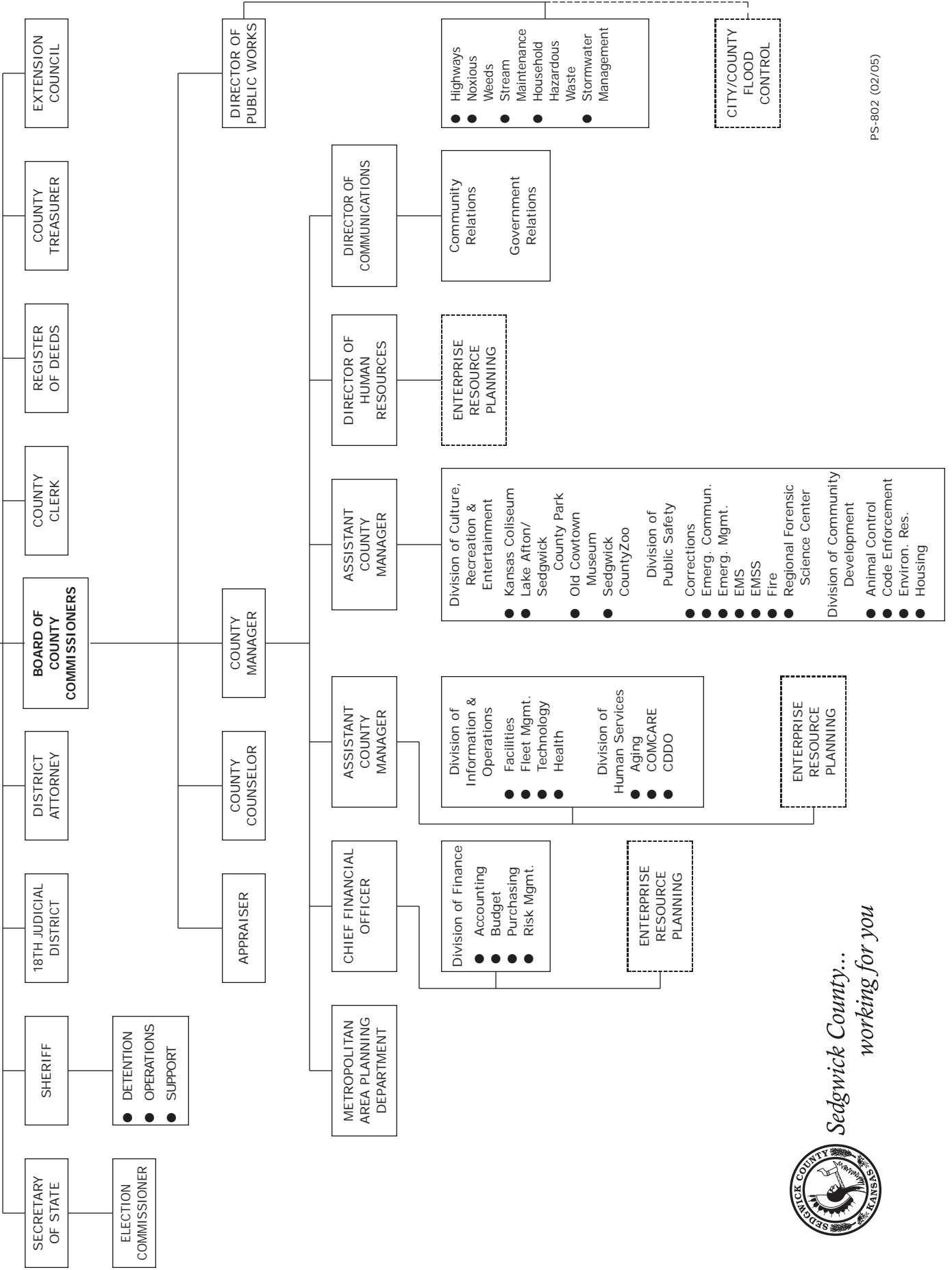
Rainfall averages about 29 inches per year, with 70 percent occurring during the April-September growing season. Snowfall is light, averaging 15 inches per year from December through March. Occurrences of more than one inch of snow, ice or sleet happen on average about five times per year. Occurrences of more than three inches happen about twice per year. Snow seldom covers the ground for a period greater than three days.

The movie "The Wizard of Oz" gave Kansas an unwarranted reputation as a high tornado risk state. Kansas ranks sixth among states in average number of tornadoes per year (Texas, Oklahoma and Florida top the list.) Kansas's weather is generally benign and most Kansans have never seen a tornado. A study found that based on area and frequency over the last 40 years, the likelihood of experiencing a tornado in Sedgwick County has been estimated as follows: any given section of land (one square mile) in the county, would be directly affected by a tornado an average of once every 1,460 years (Wichita Area Chamber of Commerce, <http://wichitachamber.org>).

# ORGANIZATIONAL CHART

## VOTERS

## SEDGWICK COUNTY, KS



*Sedgwick County...  
working for you*

