

Staying True to our mission

Sedgwick County Division of Health



*Sedgwick County...
working for you*

Mission:

To improve the health of Sedgwick County residents by

preventing disease,
promoting wellness and

protecting the public

from health threats.



Dear Friends of Public Health in Sedgwick County,

Did you know the Sedgwick County Health Department, now known as the Sedgwick County Division of Health (SCDOH), was first formed in 1929, and consisted of only one nurse and a stenographer? We were restricted to encouraging sanitation in rural districts. Now 87 years later, we've grown to encompass four focused areas - **Children and Family Health**, **Health Protection**, **Preventive Health** and **Public Health Performance** and now employ nearly 140 employees.

We have had several notable accomplishments this year. One major accomplishment was the development and implementation of a testing and training policy and procedure for English as a second language (ESL) client dialogue and interpretation. This was huge for SCDOH and sets a standard for all local health departments in Kansas.

There was a syphilis outbreak in 2016 that required staff to double book schedules for an extended period to accommodate the increased demand for testing and treatments of those infected as well as their contact partners. These outbreaks created an issue of "supply and demand" and there was a shortage in the primary medication recommended for treatment. SCDOH staff were able to coordinate with Kansas Department of Health and Environment (KDHE) to reach out to a contracted pharmacist and find an alternative medication during the drug shortage.

Our Immunizations Program collaborated with Sunflower Health (a KanCare Managed Care Organization) to help Medicaid children who were behind on their recommended vaccines. There were several clinics held in the community, and the SCDOH has continued to support

Sunflower's efforts by using our software reminder system to contact their clients who are behind and remind them of the importance of vaccinations.

At the end of this year, we were able to implement an online "Speaker Request Form" on our website, www.sedgwickcounty.org. The Speaker's Bureau is available along the left sidebar of the SCDOH webpages. We receive a lot of requests for presentations, but we had no centralized tracking or submission system. We are happy to now offer a central point for community members to request community presentations, and we have a variety of health related topics we can offer to the community.

The SCDOH strives to stay true to its mission of *improving the health of Sedgwick County residents by preventing disease, promoting wellness and protecting the public from health threats*. To achieve our mission, we offer an array of services and programs, which you can read more about in our 2016 Annual Report.

Thank you for taking this journey with us. In 2017, SCDOH will continue to work to create a healthier Sedgwick County and to assure quality public health services that provide for the present and future well-being of the citizens of Sedgwick County.

Sincerely,


Adrienne Byrne

Sedgwick County Division of Health Director

Children and Family Health

Women, Infants and Children

Women, Infants and Children (WIC) is a supplemental food and nutrition program for pregnant and breastfeeding women, new mothers and children age five and under who meet program requirements. Sedgwick County (SC) WIC staff review all resource materials provided to program participants to assure clients understand their WIC benefits.



Highlights:

- SC WIC staff served an average of 11,036 clients per month.
- SC WIC staff provided a total of 105,349 client encounters.
- Seventy-six percent of SC WIC participants initiated breastfeeding.
- Seventy-nine percent of the children, aged two to five, who were found to be obese, were able to decrease or stabilize their BMI's through caregiver education provided by SC WIC dietitians and nurses.
- State of Kansas (KS) WIC reimbursed nearly \$7,850,000 to WIC vendors in Sedgwick County for cashing food checks for WIC clients.
- KS WIC introduced a cellphone shopping application to assist clients identify WIC approved food items while shopping.



Children's Dental Clinic

The Children's Dental Clinic (CDC) provides services to children five through 16-years of age. Wichita State University dental hygiene students receive clinical experience, coaching and instruction as they provide preventive care under the supervision of the CDC staff hygienist. More than 23 volunteer dentists, including oral surgeons, donated their time and services to address children's restorative and extraction needs.



Mission Moment:

At a recent middle school dental screening, a seventh grade student was seen. His evaluation showed he had been taking very good care of his teeth by the appearance of his gums, which were healthy and pink with no signs of plaque. CDC staff asked the student what made him start taking better care of his teeth. The student said he followed the instructions on the card he was given last year by the Division of Health. CDC staff promote better oral health, as well as provide education to help prevent further tooth decay.

Highlights:

- Provided services to 334 children, with a total of 1,045 visits.

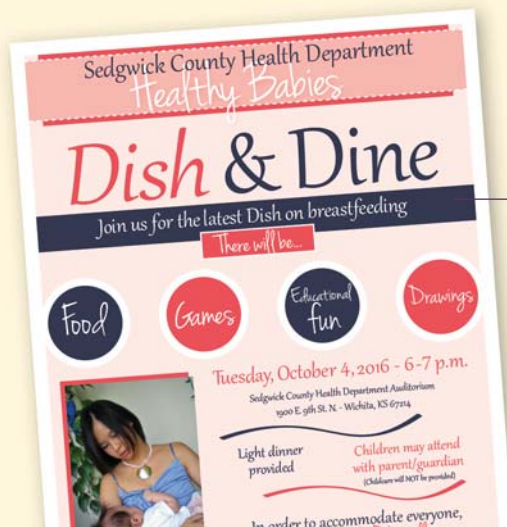


Provided dental screenings at community health fair events held in Sedgwick County such as Café con Leche and the Asian Wellness Fair.

- Provided 244 dental screenings to Juvenile Detention Facility residents, which saved Sedgwick County over \$4,000.
- Performed 15,500 dental screenings to students in 51 schools within Sedgwick County; 791 children were identified with emergency dental needs.

Healthy Babies

Healthy Babies connects high-risk, underserved pregnant women and families to health care, social services and educational opportunities. They receive one-on-one support so their babies have a better chance of surviving and thriving. Staff work to remove barriers for pregnant mothers by providing education on basic baby care, family planning, breastfeeding tips, infant growth and development information and safe sleep practices. A goal for Healthy Babies is to reduce infant mortality - with a focus in connecting with high risk families, including single or young mothers, low-income households and families with a history of preterm births or low-birth weight infants.



Highlights:

- Increased program participants served by 159 totaling 901 women, 638 children, and five males compared to 2015. Of the 901 women served, 482 lived in the eight high-risk targeted zip codes in Sedgwick County.
- Ninety-one percent of the Healthy Babies participants established a medical home.



Of the women served in our eight targeted zip codes, 89 percent of the Healthy Babies clients have an up to date well women exam.

- Healthy Babies held their first *Dish & Dine* event in October. An evening meal was provided for the program participants and their families. Staff provided breastfeeding education through a breastfeeding game which provided an opportunity for the family to participate.

Mission Moment:

Healthy Babies staff began working with a 16-year old high school sophomore who expressed she was not interested in breastfeeding during her prenatal enrollment. After learning more about the health benefits of breastfeeding, she made the decision to breastfeed her infant upon delivery. Once baby was born, and it was time for mom to return to school, the Healthy Babies Registered Nurse (RN), showed mom how to set up a pumping schedule during her school day. They worked together on how and what to discuss with her school counselor in order to advocate for having a private place to pump at least three times during the school day, which would make it easier to breastfeed her infant. Mom has been breastfeeding for five months and continues to go to school full time to help reach her goal of graduating high school.



Health Protection

Health Protection staff perform disease investigations on notifiable conditions medical providers and laboratories are required by law to report to public health. Once a report for a notifiable condition is received, staff in the Epidemiology (Epi), Sexually Transmitted Infection (STI) Control and Tuberculosis (TB) Control Programs work with medical providers to verify the diagnosis and ensure disease control measures are followed by clients. Disease control measures include appropriate treatment and while a client is infectious, isolation away from others to stop the spread of disease. Animal Control is also a part of the Health Protection program.

Program	2016	2015
Animal Control		
Field Service Calls	2,047	1,715
Animal Bite Investigations	34	41
Community Presentations (Attendees)	8 (3,500+)	6 (2,090+)
Epidemiology		
Disease Investigations	1,294	1,188
Total Client Encounters	5,978	5,164
Sexually Transmitted Infection Control		
Disease Investigations	1,197	1,104
Total Client Encounters - Clinic	739	1,256
Tuberculosis Control		
Active Disease Encounters	974	1,551
Total Client Encounters	3,050	3,819

Definition and Comments

Field investigations

Percent of Animals Contained = 100 percent

Presentations or booths at community fairs, Woofstock, schools and other organizations

All disease investigations

Phone calls, faxes, emails, and presentations regarding infectious diseases and disease investigations

Syphilis and HIV disease investigations performed in 56 county region

Appointments with clients in the West Central clinic. Numbers for 2016 are lower than 2015 due to new staff and change in investigator procedures

Appointments and directly observed therapy (DOT) for clients with active TB

Appointments and DOT for all clients, including contacts, latent and suspect cases

Highlights:

- Developed and implemented a three month orientation and training program with KDHE for new staff who investigate sexually transmitted diseases.
- Three new SCDOH disease investigators were trained and workload was restored to nearly 100 percent by the end of the year. KDHE provided disease investigation support during the transition.
- Animal Control received and responded to 19 percent more field service calls compared to 2015. Work in 2016 included: 34 animal bite investigations; 62 animals returned to owners while officers were still in the field; 526 deceased animals were removed from urban and rural roadways; and responded to 97 emergency calls from 9-1-1.

TB Control Program staff managed the care and treatment of 10 new clients diagnosed with active tuberculosis and provided direct observed therapy more than 1,000 times. TB Nurses evaluated more than 250 clients with positive skin tests but no symptoms; more than 100 of those clients were placed on medication for the prevention of active disease. Treatment for TB lasts six to nine months; TB Nurses monitor each client for the duration of their treatment.

- The Epi Program staff perform investigations on people with elevated blood lead (EBL) levels, as per state regulation. Investigations identify lead exposures so people with EBL can eliminate the exposure, decreasing lead levels in Sedgwick County. Staff developed a new questionnaire to better identify lead exposures and lowered the threshold at which investigations are performed (from EBL level of 10 ug/dL to 5 ug/dL). Staff performed 198 elevated lead investigations compared to 26 in 2015. Lead poisoning is 100 percent preventable.
- STI Control staff continue to support SCDOH programs and efforts to increase awareness of HIV testing and prevention. During the National HIV Testing Day on June 27, 2016, and World AIDS Day on December 1, 2016, disease investigators and nursing staff at West Central conducted free HIV testing. Staff partnered with local and regional organizations in support of HIV testing and prevention for both events.





Syphilis Outbreak and Penicillin Shortage

There are various task forces and special disease investigations that Health Protection staff coordinate and respond to. Penicillin shortage and the Syphilis outbreak are two examples. There was an increase in Syphilis in 2016. Disease intervention specialists (DIS) interview people who test positive for syphilis, bring contacts in for testing and ensure everyone who tests positive is treated. During 2016, two specific periods of increased syphilis cases were identified by KDHE as meeting outbreak criteria. In both cases, DIS from Sedgwick County were called upon to support the focused actions to identify sources and reduce spread for this infection. Sedgwick County staff collaborated with KDHE to support outbreak levels of syphilis within the State of Kansas by completing investigative activities through: field visits; field STI testing; door-to-door notification efforts; community-based efforts coordinated with KDHE; and traveling many miles to a multitude of locations.

The Centers for Disease Control and Prevention (CDC) declared penicillin shortages twice during 2016. Penicillin is the primary treatment method for syphilis. Sedgwick County responded to KDHE recommendations of utilizing treatment alternatives and client evaluations to determine who would most benefit from the use of penicillin. We collaborated with the KDHE to manage the national shortage of the antibiotic Bicillin for the 56 counties assigned to investigators in Sedgwick County. Staff conducted provider counseling, guidance and support services in the use of alternative medications.



Mosquito Trapping and West Nile Prevention Efforts

For the fourth year in a row, SCDOH worked with KDHE, and the Kansas Biological Survey to trap and identify mosquitoes in Sedgwick County. As in previous years, in 2016, mosquitoes that can carry West Nile virus and other diseases such as Zika virus were found in the traps. When levels of *Culex* species mosquitoes, a carrier of West Nile virus, are high, Sedgwick County Animal Control and City of Wichita Stormwater employees treat standing water on public property to control the mosquito population. In 2016, Sedgwick County reported seven human cases of West Nile virus compared to four cases in 2015. No local transmission of the Zika virus occurred in Kansas. Kansas' 19 cases were in people who had traveled to a country in which Zika virus was widespread. Health partners around Sedgwick County distributed more than 400 Fight the Bite posters and palm cards to educate the public on ways to protect themselves from mosquitoes and the diseases they spread, such as West Nile virus.



Healthy Practices during Flooding

In August, SCDOH and the Sumner County Health Departments issued a joint letter to Mulvane residents affected by flooding. The letter contained tips to protect health after flooding, including reminders to wash hands after contact with flood waters, drink only treated water and disinfect surfaces to avoid diseases that cause diarrhea; wear gloves and use tools to clean up to protect from cuts and other injuries; and wear insect repellent when outside to protect from West Nile virus infection spread by mosquitoes. In response to more flooding in Sedgwick County in September, the SC Emergency Operations Center (EOC) was activated by Emergency Management. SCDOH participated in EOC meetings and created a list of ways to protect one's health after a flood; the list was announced in a press release by SC Communications, on Twitter, and in a Facebook live video. SCDOH staff worked with the Sumner County Health Department to distribute the list to residents.



Working with School Nurses to Control the Spread of Disease

SCDOH partners with many Sedgwick County School Nurses to control the spread of disease. From August through October, DOH staff distributed educational packets to 313 Sedgwick County schools, including 56 private schools. The packets contained a disease control booklet, reporting diseases poster and information for the SCDOH immunization mobile clinic and Children's Dental Clinic. School Nurses are encouraged to gain access to the Sedgwick County School Illness Reporting website where they voluntarily report aggregate numbers of students and staff ill to monitor disease in Sedgwick County.



Bed Bug Task Force

In 2016, the SCDOH created the Sedgwick County Bed Bug Task Force to tackle the burden of bed bugs in Sedgwick County by providing education on ways to prevent and how to eliminate infestations. Bed bugs are a community issue, and Sedgwick County residents are increasingly turning to community organizations for help. The SCDOH convened ten meetings with more than 32 partner agencies to learn about bed bugs, describe the problem in Sedgwick County and develop local educational materials, including a landlord guide and information for renters. The Task Force created a new website hosted by the Sedgwick County Extension Office, developed 13 educational documents and plans an educational event for the public in 2017.



Incident Command System Training for Public Health Emergencies

Public Health Incident Command System (PH-ICS) is a standardized system that enables effective and efficient incident management in the event of a public health emergency. In 2016, all 126 SCDOH staff completed available PH-ICS trainings identified for their role in an emergency. Training was tracked in KS-TRAIN and in a new Microsoft Access public health emergency preparedness database developed by the SCDOH.



Senior Center Surveys

In April, Epidemiologists presented information about influenza (flu) and vector-borne illnesses to approximately 120 seniors at senior centers in six communities around Sedgwick County. Seniors completed an anonymous survey about their flu vaccination status and any barriers they experience trying to get their vaccinations. The survey was developed to identify if SCDOH should provide flu shots to seniors at senior centers. Of the 111 seniors who filled out the survey, 89 percent answered they had received a flu shot in the past two years. The survey data input and analysis was performed by a Wichita State University Health Sciences student working with an SCDOH Epidemiologist in June and July.

Mission Moment:

Infants born to hepatitis B positive mothers are followed by the Epidemiology Program to ensure they receive the three doses of hepatitis vaccine on time, usually by six months of age. About three months after the third dose, Epidemiology works with the medical providers and parents to test the infants to make sure they are not infected and are protected by antibodies developed from immunization. The testing has to be completed by 24 months of age. In May 2016, a 15-month-old child born to a hepatitis B positive mother received their third dose of hepatitis B vaccine, and Epidemiology staff informed the nurse about the testing that should occur in August. In September, the nurse informed Epidemiology staff the parents had canceled appointments. Epidemiology encouraged the nurse to keep trying to reach the child's parents. After many attempts to reach the parents in October and November by both the nurse and Epidemiology staff, the nurse said her last attempt would be by certified letter. Because of that letter, at the end of December, the parents brought the then 22-month-old child in and testing confirmed that the child did not have hepatitis B infection and was protected from future infection. Had it not been for the diligent nurse trying to reach the parents, we would not have known the child's health status. We were able to provide quality health services to this mother and her child, as well as to prevent further infection to others in the community.

Preventive Health

Preventive Health

Preventive Health staff provides services for consumers for immunizations, STI testing, family planning, laboratory testing and health screenings.

Program Services Provided	2016 - Number of Services	2015 - Number of Services
Immunizations Given	21,717	16,789
Health Screenings Performed	2,325	2,577
Sexually Transmitted Infection (STI) Tests Performed	15,724	17,173
Family Planning (FP)	5,437	5,690
Early Detection Works (EDW)	430 women served	522 women served

Highlights:




The SCDOH Immunization Program provided low to no cost vaccines through the CDC/KDHE Vaccines for Children Program (VFC) and the Children's Health Insurance Program for children ages 18 and under. The SCDOH VFC program administered 14,138 vaccinations and another 742 through the Children's Insurance Program (CHIP).

- Conducted over 270 Mobile Clinics at community centers, WIC locations, and special community events; 1,887 clients received 3,915 immunizations.
- The Immunization Program and Sunflower Health Plan provided outreach to target areas with low immunization rates. Mobile clinics were held in the targeted areas to decrease barriers to immunization services. Customers were provided no cost immunizations (MCO covered costs) and a fresh produce voucher. Target audiences included children 24-35 months of age and adolescents with immunizations available for those outside of the targeted group.
- The Sexually Transmitted Infection (STI) Clinic supports the county disease investigation teams as well as citizens concerned about their health through walk-in screening and testing, vouchers for free services to those who qualify, and free medication. The STI Clinic provided 3,420 gonorrhea and chlamydia tests and 1,502 syphilis tests, and treated 344 chlamydia, 163 gonorrhea cases, and 51 syphilis cases.

Highlights:

- The SCDOH operates its own on-site laboratory. The laboratory supports DOH Clinics by testing for sexually transmitted diseases, blood borne pathogens, Rubella, pregnancy, and routine urinalysis. Testing is also done on a contractual basis for Community Health Center Clinics in the county. Testing for specimens not performed in the SCDOH laboratory are collected, packaged, and transported to a local reference laboratory or the KDHE Laboratory in Topeka.
- Lab staff decreased the number of positive chlamydia tests that needed to be confirmed by 94 percent and saving about \$3,800 annually. A similar project for gonorrhea tests is being conducted in 2017.



Each year efforts are made to minimize the number of children excluded from school due to non-compliance with immunization requirements. During the 2016-17 school year, the Immunization Program requested a list of non-compliant students. USD 259 provided the list of approximately 4,900 students subject to school exclusion. The Immunization Service Coordinator (ICS) and staff worked to verify immunization compliance/non-compliance of each student on the list. Staff utilized the KIPHS system to ensure complete and accurate immunization records. Beverly Bruce utilized WebIZ (Kansas Immunization Registry) during and after work hours to ensure complete and accurate immunization records. As a result of the efforts, complete immunization records were provided to USD 259 and several children were removed from the school exclusion list. Because of their work hundreds of students were able to remain in school and continue learning.

- Women referred by the Division of Health for follow up colposcopy procedures (cancer screening) at an area physicians' office were not keeping appointments at a rate of 36 percent. The General Clinic program reduced that no show rate to 17 percent through a quality improvement effort. During the short study, 69 women were screened by the physicians' office and 15 were found to be cancerous or had significant changes indicating movement toward cancer, showing the importance of the screening.



Mission Moment:

A Family Planning (FP) client was in need of a follow-up diagnostic procedure after an abnormal Pap result. The client was putting it off because she was still paying off the biopsy procedure associated with her condition and because of some anxiety over the procedure. Staff enrolled her in the Early Detection Works (EDW) program so that she could get the follow-up procedure after the Pap. The client then enrolled with insurance to avoid the tax penalty, which made her ineligible to receive the free EDW services. Her insurance deductible was too high for her to afford the diagnostic procedure so then she was back to square one. SCDOH staff contacted Wesley Family Medicine, a community health partner for the EDW and FP program. Wesley Family Medicine agreed to provide discounted services for some clients, and were able to provide discounted services for this client. Wesley also called out a prescription for the client's anxiety so she would be calm at the time of the procedure. The client was very thankful for the assistance the SCDOH provided her in this situation and we were able to accomplish our mission by providing for her present needs, as well as her future well-being.

Public Health Performance

Public Health Performance provides programming through three specific areas: Fetal and Infant Mortality Review (FIMR), the Community Health Advocate Program, and in developing and monitoring performance standards.

FIMR is an action-oriented community process that continually assesses, monitors and works to improve service systems and community resources for women, infants and families. FIMR, through the contributions of individuals representing academic and medical institutions, community organizations and public or private agencies that provide services or resources for women, infants and families, reviewed 24 cases and conducted 13 maternal interviews in efforts to identify recommendations to improve policies and services that affect families.

The Community Health Advocate Program utilized community volunteers to share health care information and materials to assist residents in finding affordable medical care and a medical home. Volunteers presented to 3,811 individuals at 54 events.

To help assure quality public services, staff assisted programs in developing and monitoring performance standards.

Highlights:

- FIMR provided five new recommendations to the Community Action Team (CAT) Team for focus of work in 2017. The CAT initiated a survey amongst prenatal care providers to help understand mental health and domestic violence screening for pregnant women in Sedgwick County.

There was an increase in the number of sleep related deaths in infants in Sedgwick County in 2016. The SCDOH along with community partners felt that information surrounding these deaths needed to be explored to determine if anything could be done on the community level to reduce future deaths. Safe Sleep Task Force members joined with FIMR members and reviewed seven of the nine cases within a two month timeframe. This expedited the review of these deaths which typically takes over a year. A report of findings is being created to share with community partners.





- Nineteen Community Health Advocates distributed materials to 3,811 residents of Sedgwick County. Of those contacted, 80 percent reported they learned new information on health care resources in the community; 31 percent reported they were uninsured; and 54 percent stated they intended to seek a medical/dental home using the information they were provided.

SCDOH began training and testing bilingual employees who volunteered to serve as interpreters at work. The employees serve as interpreters between SCDOH clients whose preferred language is not English and an employee who does not speak the client's preferred language. Staff training includes a 3.5 hour session with a local company, and multiple 1.5 hour practice sessions coordinated by a fluent in Spanish and English SCDOH employee. After training, staff take a standardized, oral test over the phone through a local company. Staff who pass the test can interpret as part of their job and receive credit for that on their annual evaluation. Providing training and standardized testing of in-house interpreters assists SCDOH in its efforts to improve health care quality and minimize health inequity. This service meets interpretation requirements set forth in the *Culturally and Linguistically Appropriate Services in Health and Health Care Standards (The National CLAS Standards)*. Bilingual SCDOH staff who dialogue directly with clients but do not interpret for other staff must pass a standardized proficiency or fluency test. The test we offer is validated by external entities and is recognized by Joint Commission, which certifies we meet the requirements for competency and ensures quality care.

- SCDOH met 93 percent of its internal standards. Meeting these standards helps demonstrate the division's impact on improving health in the community. External customer satisfaction is an important measure for the SCDOH and integral in helping us improve our service delivery. Clients completed 2,963 surveys when visiting the Division of Health; 99 percent reported overall satisfaction.



Mission Moment:

A resident called requesting information for obtaining dentures. She came into the office and the Program Director and Community Health Advocates Coordinator shared Careington's TheOneCard discount information with her. She stated with the dentures she would feel more confident seeking employment. She was also provided information about United Way's 2-1-1 Resource Call Center and will access their services to help with finding needed items for the five grandchildren now living in her home.

Board of Sedgwick County Commissioners

Dave Unruh, 1st District Richard Ranzau, 4th District
Tim Norton, 2nd District Jim Howell, 5th District
Karl Peterjohn, 3rd District

Sedgwick County Division of Health Administrative Management Team

Adrienne Byrne, Health Director
Candace Johnson, Children & Family Health Director
Preston Goering, Preventive Health Director
J'Vonnah Maryman, Public Health Performance Director
Chris Steward, Health Protection Director

Sedgwick County Division of Health

1900 E. 9th Street – Wichita, KS 67214 – 316-660-7300
Main Clinic – 2716 W. Central, Wichita, KS 67203
www.sedgwickcounty.org



Sedgwick County...
working for you

Programs and Encounters	2016	2015	2014
Immunizations and Health Screenings	12,614	13,285	13,230
Sexually Transmitted Diseases	3,020	3,185	3,103
Tuberculosis	3,050	3,819	2,741
Breast and Cervical Cancer Screening and Education	430	522	567
Family Planning	5,438	5,690	5,910
Healthy Babies	7,268	7,104	7,257
Woman, Infants, and Children (WIC)	105,349	116,052	121,305
Children's Dental	1,045	1,092	950
HIV Screening	3,166	3,461	3,437
Epidemiology	5,978	5,164	4,927
Total	147,358	159,374	163,427

2016 Financials	Budget	Received	Difference
Federal	\$5,204,859.16	\$3,924,383.68	\$(1,280,475.48)
State	\$909,146.70	\$1,110,449.29	\$201,302.59
User Fees	\$1,145,665.28	\$1,171,938.17	\$26,272.89
Taxes	\$4,523,652.08	\$4,270,468.82	\$(253,183.26)
Other	\$88,321.97	\$226,558.69	\$138,236.72
TOTAL <i>*Numbers include Animal Control</i>	\$11,871,645.19	\$10,703,798.65	\$(1,167,846.54)