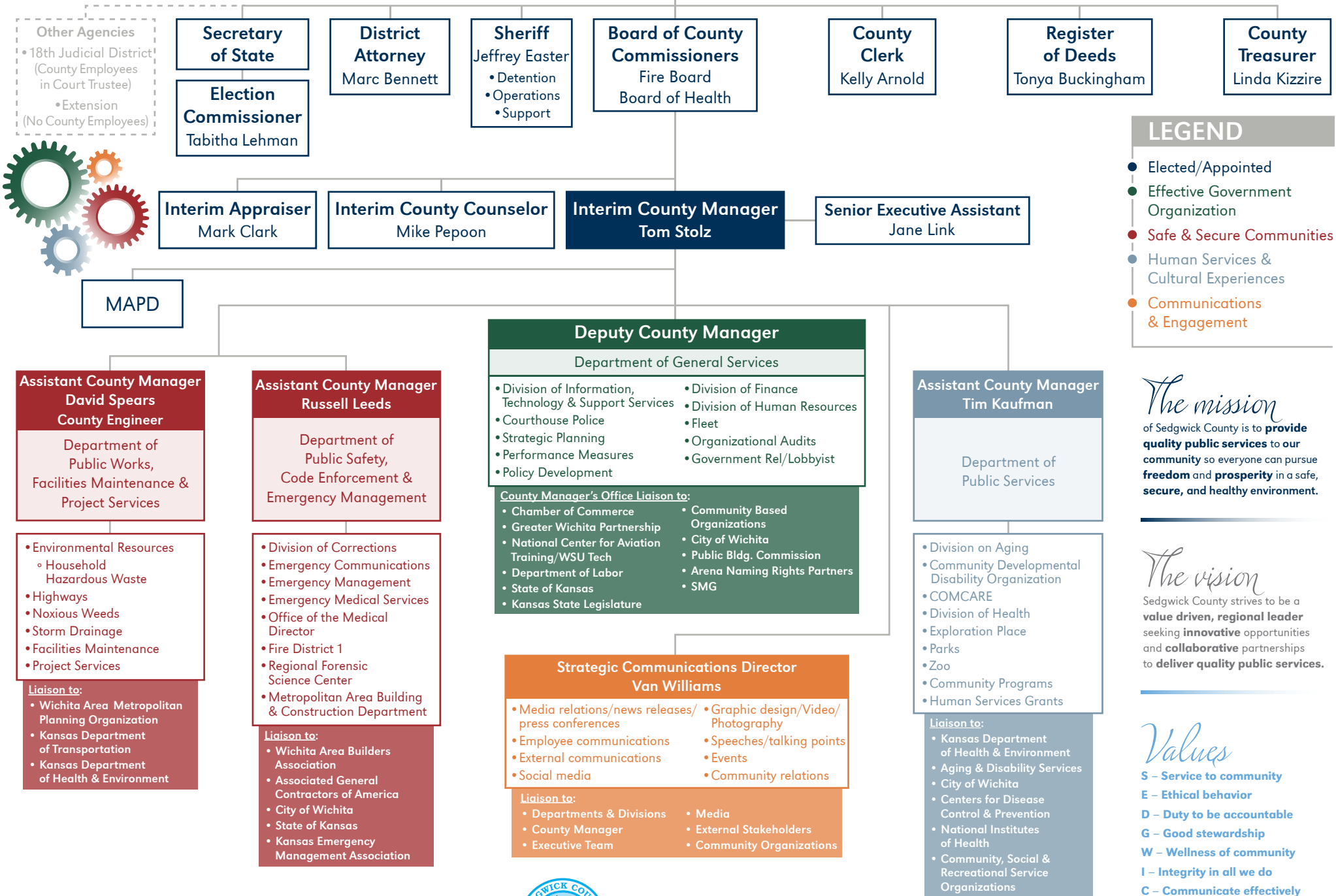


**ORGANIZATIONAL CHART**

**CITIZENS**

**SEDGWICK COUNTY, KS**



**LEGEND**

- Elected/Appointed
- Effective Government Organization
- Safe & Secure Communities
- Human Services & Cultural Experiences
- Communications & Engagement

*The mission*  
 of Sedgwick County is to **provide quality public services** to our community so everyone can pursue **freedom and prosperity** in a safe, secure, and healthy environment.

*The vision*  
 Sedgwick County strives to be a **value driven, regional leader** seeking **innovative** opportunities and **collaborative** partnerships to **deliver quality public services**.

*Values*

- S** – Service to community
- E** – Ethical behavior
- D** – Duty to be accountable
- G** – Good stewardship
- W** – Wellness of community
- I** – Integrity in all we do
- C** – Communicate effectively both internally and externally
- K** – Knowledge -Fostering an environment of competency & continuous learning

