

## **ADDENDUM NO. 1**

**Sedgwick County Project: 803-Y thru AA; 135<sup>th</sup> St. West between  
71<sup>st</sup> & 95<sup>th</sup> Streets South (R259A)**


**The items contained herein now become a part of the referenced plans and specifications. Please read the following items and acknowledge receipt of this addendum on the Proposal Page Number P-1. NOTE: THIS ADDENDUM MUST BE ACKNOWLEDGED TO CONSTITUTE A VALID BID.**

### ***SPECS:***

Replace Schedule of Prices sheet SOP-1 to 2 with SOP-1R to 2R  
(Removing Calcium Chloride bid item, changing quantities on 15" Entrance Pipe, 24" End Sections, 5.0 & 6.0 Sq.Ft. End Sections)

### ***PLANS:***

Replace sheet 16 with sheet 16R.  
Replace sheet 27 with sheet 27R.  
Replace sheet 38 with sheet 38R.  
Replace sheet 39 with sheet 39R.  
Replace sheet 49 with sheet 49R.  
Replace sheet 62 with sheet 62R.

By:   
David C. Spears, P.E., Director,  
Public Works/County Engineer

**Date: January 30, 2015**

## SCHEDULE OF PRICES

Project No.: 803-Y thru AA; 135th St. West between 71st & 95th Streets South (R259A)

Type of Work: Grading, Surfacing, RCB Culverts, Seeding, Pavement Marking

Bidding Item	Approx. Quantity	Unit	Unit Price	Amount
Contractor Construction Staking	1	Lump Sum		
Field Office	1	Each		
Mobilization	1	Lump Sum		
Removal of Existing Structures	1	Lump Sum		
Maintenance and Restoration of Haul Roads (Set Price)	1	Lump Sum	5,000.00	
Clearing and Grubbing	1	Lump Sum		
Common Excavation	33,896	Cu. Yds.		
Rock Excavation	10,503	Cu. Yds.		
Water (Grading) (Set Price)	1	M.Gal	35.00	
Compaction of Earthwork (Type B) (MR-90)	7,038	Cu. Yds.		
Compaction of Earthwork (Type AA) (MR-3-3)	8,447	Cu. Yds.		
Water (Earthwork Compaction) (Set Price)	1	M.Gal	35.00	
Aggregate For Shoulders (AS-1)	9,308	Tons		
Water (Aggregate Shoulders) (Set Price)	1	M.Gal	35.00	
Surfacing Material (AB-3)	966	Tons		
Surfacing Material (AB-3) (Provide Only)	300	Tons		
Road Gravel (Provide Only)	2,500	Tons		
Keel (Provide Only)	200	Tons		
Aggregate Base (Special) (6")	50,688	Sq. Yds.		
Milling	219	Sq. Yds.		
Plant Mix Asphalt Mixture -Commercial Grade (Base) (5")	13,462	Tons		
Plant Mix Asphalt Mixture -Commercial Grade (Base) (6")	938	Tons		
Plant Mix Asphalt Mixture -Commercial Grade (Surface) (2")	5,666	Tons		
Concrete (Grade 4.0)	57	Cu. Yds.		
Concrete (Grade 4.0) (AE)	25	Cu. Yds.		
Reinforcing Steel (Grade 60)	1,950	Lbs.		
Reinforcing Steel (Grade 60) (Epoxy Coated)	7,850	Lbs.		
Foundation Stabilization	35	Cu. Yds.		
Concrete for Seal Course (Set Price)	1	Cu. Yds.	175.00	
Granular Backfill (Wingwalls)	32	Cu. Yds.		
Crossroad Pipe (18") (RCP)	120	L.F.		
Crossroad Pipe (24") (RCP)	142	L.F.		
Crossroad Pipe (36") (RCP)	72	L.F.		
Crossroad Pipe (3.0 Sq. Ft.) (RCPHE)	173	L.F.		
Crossroad Pipe (4.0 Sq. Ft.) (RCPHE)	162	L.F.		
Crossroad Pipe (5.0 Sq. Ft.) (RCPHE)	114	L.F.		
Crossroad Pipe (6.0 Sq. Ft.) (RCPHE)	62	L.F.		
Entrance Pipe (15") (RCP)	234	L.F.		
Entrance Pipe (18") (RCP)	354	L.F.		
Entrance Pipe (24") (RCP)	271	L.F.		
Entrance Pipe (30") (RCP)	56	L.F.		

## SCHEDULE OF PRICES

Project No.: 803-Y thru AA; 135th St. West between 71st & 95th Streets South (R259A)

Type of Work: Grading, Surfacing, RCB Culverts, Seeding, Pavement Marking

Bidding Item	Approx. Quantity	Unit	Unit Price	Amount
Entrance Pipe (1.5 Sq. Ft.) (RCPHE)	72	L.F.		
Entrance Pipe (5.0 Sq. Ft.) (RCPHE)	166	L.F.		
Entrance Pipe (6.0 Sq. Ft.) (RCPHE)	144	L.F.		
Storm Sewer (12") (RCP)	26	L.F.		
End Section (12") (RC)	2	Each		
End Section (15") (RC)	10	Each		
End Section (18") (RC)	20	Each		
End Section (24") (RC)	22	Each		
End Section (30") (RC)	4	Each		
End Section (36") (RC)	2	Each		
End Section (1.5 Sq. Ft.) (RCHE)	4	Each		
End Section (3.0 Sq. Ft.) (RCHE)	6	Each		
End Section (4.0 Sq. Ft.) (RCHE)	4	Each		
End Section (5.0 Sq. Ft.) (RCHE)	16	Each		
End Section (6.0 Sq. Ft.) (RCHE)	10	Each		
Seeding	1	Lump Sum		
Temporary Seeding	1	Lump Sum		
Soil Erosion Mix	5.2	Lbs.		
Temporary Ditch Check	4,221	L.F.		
Temporary Slope Barrier	305	L.F.		
Sediment Removal (Set Price)	1	Cu. Yds.	35.00	
SWPPP Design	1	L.S.		
Mobilization (Emergency Erosion Control) (Set Price)	1	Each	1,000.00	
Erosion Control (Class 2)(Type H)	510	Sq. Yds.		
Pvmt. Marking (Paint) (White) (4")	31,892	Lin. Ft.		
Pvmt. Marking (Paint)(Yellow)(4")	3,890	Lin. Ft.		
Temporary Surfacing Material (Set Price)	1	Cu. Yds.	35.00	
Mailbox Installation (Set Price)	1	Each	140.00	
Mowing	6.0	Mile/Side		
Traffic Control	1	Lump Sum		
G20-Special Signing	4	Each		
Solar Powered Portable Dynamic Message Sign	4	Each		
Grand Total				

DOLLARS

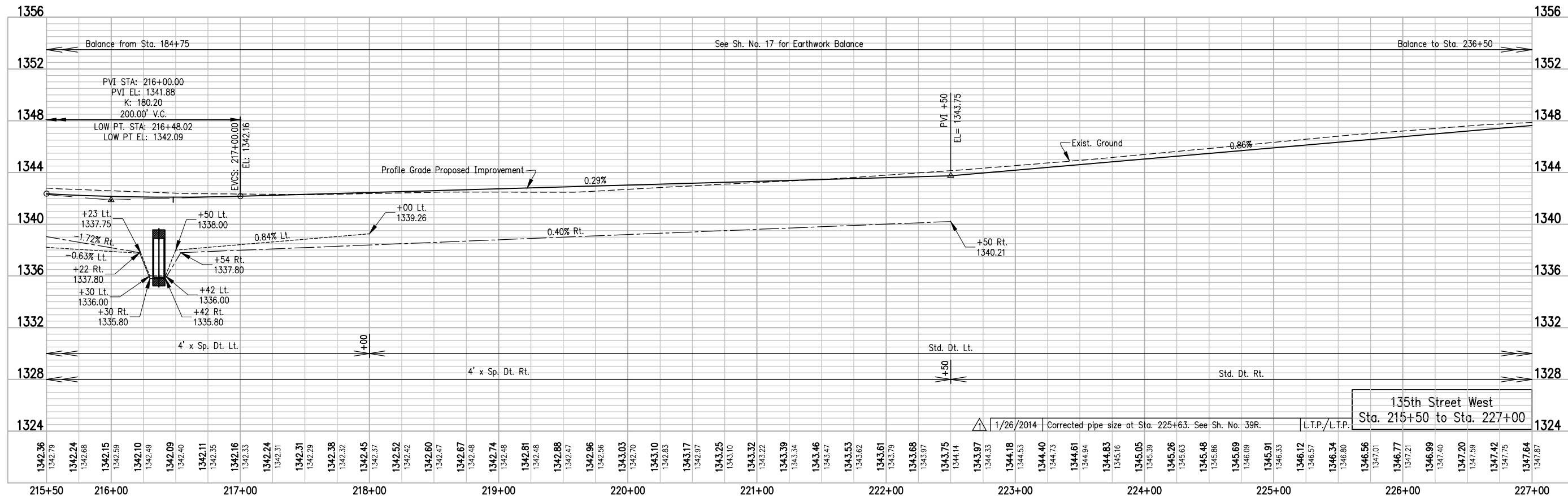
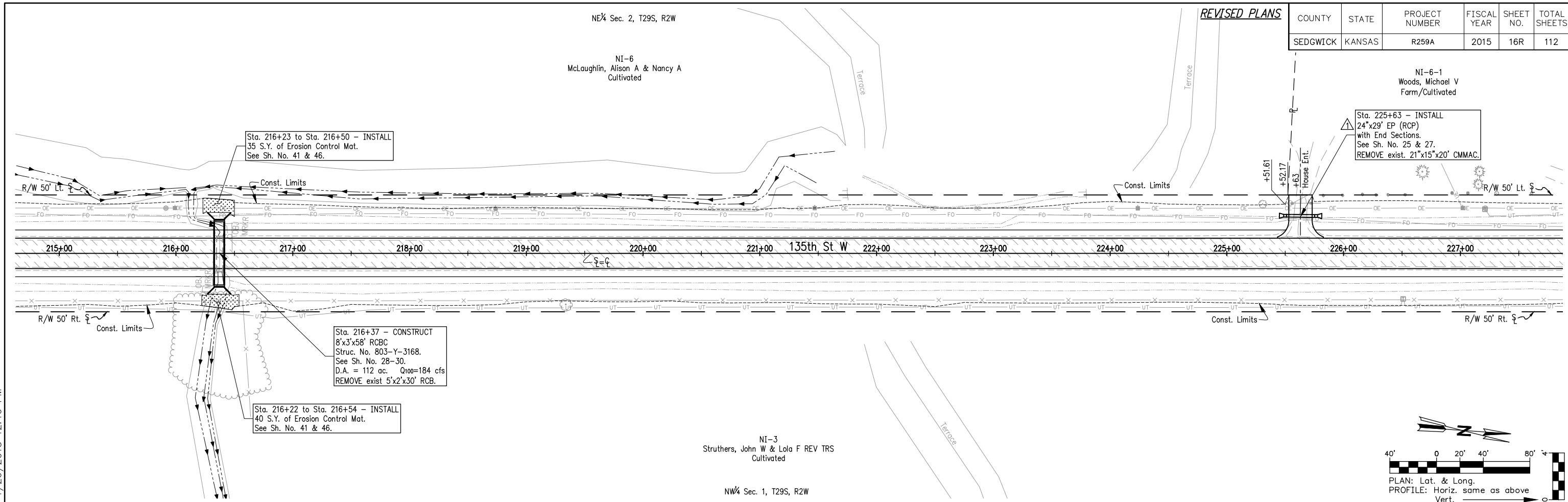
Company or Firm Name

BY

TITLE

SOP-2R

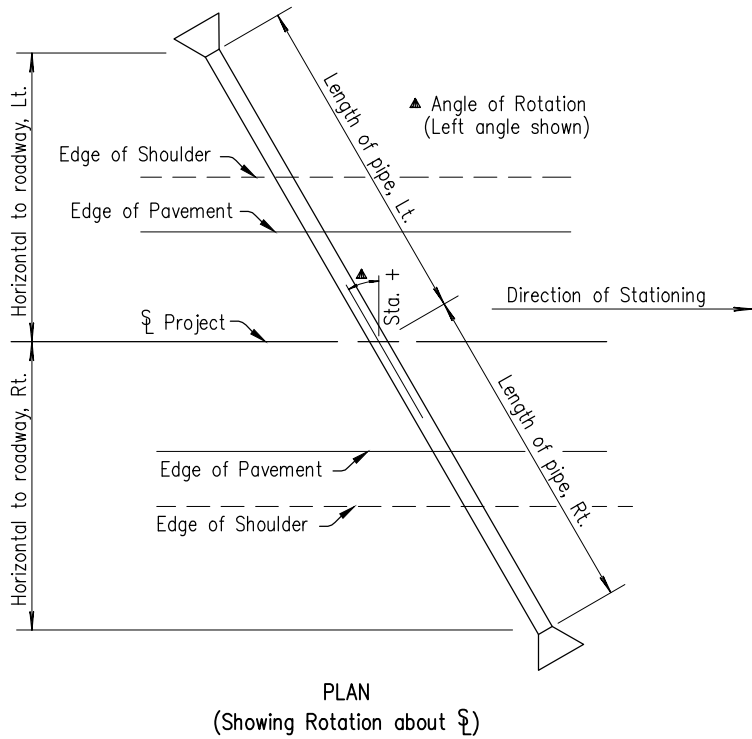
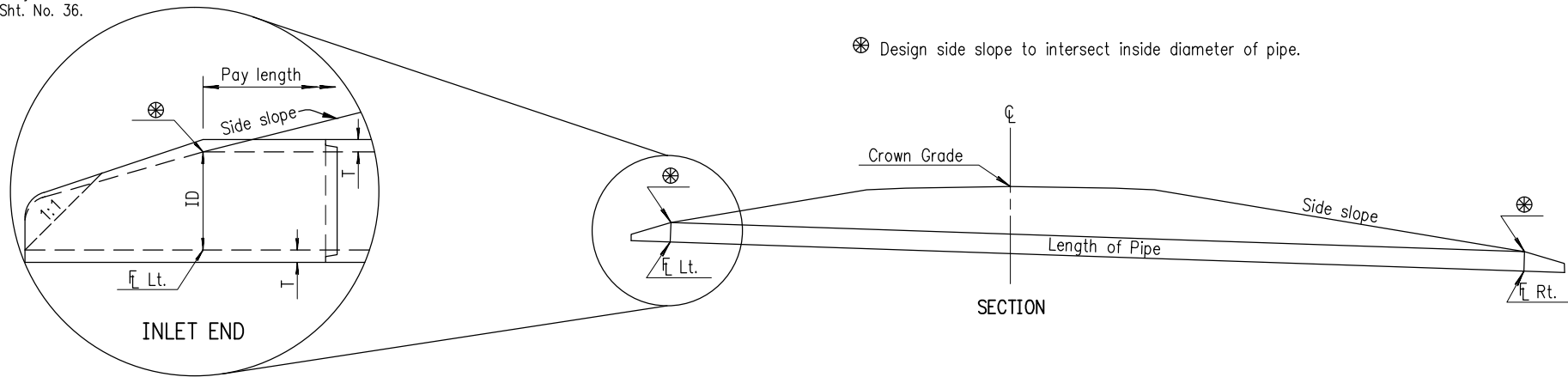
Device: DWG To PDF.pc3 Page Setup: ----- By: Packer, Lynn T.  
O: \\Projects\\R259A\\R259-PP-215+50to227+00.dwg Layout: PP-215+50to227+00 Plotted: 1/26/2015 12:16 PM




Device: DWG To PDF.pc3 Page Setup: ----- By: Packer, Lynn T.  
O: \\Projects\\R259A\\RD659--Summary Pipe.dwg Layout: RD659 Plotted: 1/26/2015 12:29 PM

PIPE CULVERT SUMMARY																					
Station	Side	Offset Ft.	Type	Size or Bid Designation Sq. Ft.	Crown Grade Elev.	Flow Line		Horizontal Roadway		Degree of Rotation	Length of Pipe (ft)		Lin. Ft. of Pipe	Height of Fill (Max.) Ft.	Concrete Pipe AASHTO Class No.	End Sections				Flowable Fill (Low Strength) (Cu. Yds.)	Remarks
						Lt.	Rt.	Lt.	Rt.		Lt.	Rt.				Type I		Type III			
																Lt.	Rt.	Lt.	Rt.		
135th Street																					
84+67	℄	—	CRP	2–5.0 <sup>o</sup>	1306.08	1303.00	1303.10	28.5	28.5	0	28.5	28.5	114		II	2	2				
99+04	Rt.	34.4	EP	1.5 <sup>o</sup>	—	1317.77	1317.22	—	—	0	21	21	42		II	1	1				
100+54	Rt.	34.5	EP	1.5 <sup>o</sup>	—	1319.66	1319.27	—	—	0	15	15	30		II	1	1				
110+67	Lt.	36.4	EP	18"	—	1319.69	1319.59	—	—	0	20	20	40		II	1	1				
114+24	℄	—	CRP	6.0 <sup>o</sup>	1321.80	1317.80	1317.90	31	31	0	31	31	62		II	1	1				
119+92	Rt.	35.7	EP	2–24"	—	1318.95	1318.87	—	—	0	21.5	21.5	86		II	2	2				
119+92	Lt.	37.0	EP	18"	—	1318.80	1318.88	—	—	0	22	22	44		II	1	1				
120+84	Lt.	36.6	EP	18"	—	1318.98	1319.04	—	—	0	17	17	34		II	1	1				
123+05	Lt.	35.0	EP	18"	—	1319.39	1319.44	—	—	0	17	17	34		II	1	1				
126+96	Lt.	37.0	EP	18"	—	1320.11	1320.17	—	—	0	17	17	34		II	1	1				
128+83	Lt.	39.2	EP	18"	—	1320.44	1320.52	—	—	0	24	24	48		II	1	1				
135+25	℄	—	CRP	36"	1326.61	1320.60	1320.90	37	35	0	37	35	72		II	1	1				
136+75	Lt.	41.2	EP	2–5.0 <sup>o</sup>	—	1321.59	1321.77	—	—	0	9.5	9.5	38		II	△ 2	△ 2				
140+82	Rt.	51.3	EP	15"	—	1324.05	1323.85	—	—	12	17	57	74		II	1	1				
140+92	℄	—	CRP	4.0 <sup>o</sup>	1328.81	1323.90	1324.53	31.8	35.2	36.5	39.5	43.5	83		II	1	1				
140+98	℄	—	CRP	4.0 <sup>o</sup>	1328.88	1323.90	1324.53	33.6	30.2	36.5	42	37	79		II	1	1				
145+23	Rt.	39.9	EP	24"	—	1330.82	1330.61	—	—	0	22.5	22.5	45		II	1	1				
145+89	Rt.	39.9	EP	24"	—	1331.13	1330.93	—	—	0	21.5	21.5	43		II	1	1				
150+50	Rt.	35.2	EP	24"	—	1334.20	1333.73	—	—	0	19.5	19.5	39		II	1	1				
156+71	Rt.	34.5	EP	24"	—	1336.38	1336.30	—	—	0	14.5	14.5	29		II	1	1				
158+33	Rt.	34.5	EP	18"	—	1336.90	1336.78	—	—	0	18	18	36		II	1	1				
158+43	Lt.	34.5	EP	15"	—	1336.92	1336.81	—	—	0	18	18	36		II	1	1				
160+76	℄	—	CRP	2–24"	1340.62	1336.10	1336.25	35.5	35.5	0	35.5	35.5	142		II	2	2				
163+68	Lt.	38.3	CRP	18"	—	1338.40	1338.86	—	—	0	34	32	66		II	1	1				
172+95	Lt.	38.3	EP	2–6.0 <sup>o</sup>	—	1338.17	1338.54	—	—	0	17.5	17.5	70		II	2	2				
176+86	Lt.	34.5	EP	2–30"	—	1341.52	1341.68	—	—	0	14	14	56		II	2	2				
181+22	Rt.	34.5	EP	2–6.0 <sup>o</sup>	—	1344.19	1343.98	—	—	0	18.5	18.5	74		II	2	2				
198+48	Rt.	32.0	EP	15"	—	1349.08	1349.37	—	—	0	22	22	△ 40		II	1	1				
198+88	Lt.	32.0	EP	18"	—	1349.09	1348.84	—	—	0	20	20	40		II	1	1				
205+57	Lt.	32.0	EP	15"	—	1344.74	1344.49	—	—	0	20	20	40		II	1	1				
212+50	Rt.	32.0	EP	2–5.0 <sup>o</sup>	—	1340.70	1340.86	—	—	0	18.5	18.5	74		II	2	2				
212+50	Lt.	32.0	EP	15"	—	1340.88	1340.69	—	—	0	22	22	44		II	1	1				
225+63	Lt.	32.0	EP	△ 24"	—	1342.76	1343.01	—	—	0	14.5	14.5	29		II	1	1				
231+30	Lt.	32.0	EP	18"	—	1344.32	1344.21	—	—	0	22	22	44		II	1	1				
95th Street																					
950+43	℄	—	CRP	3.0 <sup>o</sup>	1307.06	1304.19	1304.35	33.0	28.2	6	33	28	61		II	1	1				
87th Street																					
867+35	Lt.	22.6	EP	2–5.0 <sup>o</sup>	—	1319.44	1319.90	—	—	0	13.5	13.5	54		II	2	2				
870+49	℄	—	CRP	18"	1324.41	1321.30	1321.16	22.7	30.1	10.3	23	31	54		II	1	1				
79th Street																					
789+56	℄	—	CRP	3.0 <sup>o</sup>	1349.10	1346.75	1346.04	30.7	28.7	4	31	29	60		II	1	1				
790+41	℄	—	CRP	3.0 <sup>o</sup>	1349.24	1346.70	1346.57	25.6	25.6	5	26	26	52		II	1	1				

NOTE: Lin. Ft. of pipe is for RC pipe only.  
Summary of pay length is shown on Sht. No. 36.



	1/26/2014	Corrected pipe size, length & E/S quantities. See Sh. No. 39R. L.T.P./L.T.P.									
	NO.	DATE	REVISIONS							BY	APP'D
KANSAS DEPARTMENT OF TRANSPORTATION											
SUMMARY OF PIPE CULVERTS											
RD659											
FHWA APPROVAL				6-27-08				APP'D James O. Brewer			
DESIGNED				DETAILED				QUANTITIES		TRACED Bower	
DESIGN CK.				DETAIL CK.				QUAN. CK.		TRACE CK. King	

Device: DWG To PDF.pc3 Page Setup: ----- By: Packer, Lynn T. O:\Projects\R259A\Summary of Quantities.dwg Layout: Summary Of Quantities Plotted: 1/26/2015 2:11 PM

A <sup>A</sup> REMOVAL OF EXISTING STRUCTURES			
STATION	SIDE	SIZE	ITEM
79+88	Rt.	24"	RCP
80+27	Lt.	---	Golf Sign
84+38	Lt.	---	Street Sign
80+54	Rt.	24"	RCP
81+10 to 98+89	Rt.	1779 LF	Barbed Wire Fence
82+19	Lt.	---	4-H Sign
82+36	Rt.	---	Speed Limit Sign
83+00	Lt.	---	Lion's Club Sign
84+63	Rt.	---	Object Marker Sign
84+67	℄	5'x2'	RCB
84+71	Lt.	---	Object Marker Sign
99+04	Rt.	18"	CMP
100+55	Rt.	18"	CMP
107+18 to 131+91	Rt.	2,505 LF	Barbed Wire Fence/Gate
110+67	Lt	18"	CMP
114+20	Rt.	---	Object Marker Sign
114+24	℄	2'x2'	RCB
114+26	Lt.	---	Object Marker Sign
119+90	Lt.	18"	RCP
119+93	Rt.	24"	CMP
120+86	Lt.	18"	CMP
126+99	Lt.	18"	CMP
128+83	Lt.	18"	CMP
132+07	Lt.	---	Stop Sign
132+23	Rt.	24"	RCP
132+36	Rt.	---	Stop Sign
132+62	Lt.	---	Street Sign
135+17	Rt.	---	Object Marker
135+23	℄	4'x2'	RCB
135+27	Lt.	---	Object Marker
136+81	Lt.	18"	CMP
140+81	Rt.	24"	CMP
142+82 to 146+77	Rt.	390 LF	Vinyl Fence
145+19	Rt.	24"	CMP
145+98	Rt.	24	CMP
147+07	Rt.	20"x17"	CMMAC
147+14 to 153+45	Rt.	631 LF	Barbed Wire Fence
156+70	Rt.	21"x15"	CMMAC
158+32	Rt.	21"x15"	CMMAC
158+48	Lt.	18"	RCP
160+68	Rt.	---	Object Marker Sign
160+78	℄	2'x2'	RCB
160+89	Lt.	---	Object Marker Sign
163+40	Lt.	---	Stop Sign
163+41	Lt.	---	Object Marker Sign
163+68	Lt.	21"x15"	CMMAC
163+97	Lt.	---	Object Marker Sign
164+02	Lt.	---	Street Sign
165+88	Lt.	---	Private Sign
166+05	Lt.	24"	CMP
171+69	Rt.	---	Object Marker Sign
171+78	℄	4'x2'	RCB
171+84	Lt.	---	Object Marker Sign
172+96	Lt.	28"x20"	CMMAC
176+87	Lt.	24"	CMMAC
181+24	Rt.	24"	RCP
185+34	Lt.	---	Stop Sign
185+47	Rt.	24"	RCP
185+49	Lt.	24"	CMP
185+65	Rt.	---	Stop Sign

A <sup>A</sup> REMOVAL OF EXISTING STRUCTURES			
STATION	SIDE	SIZE	ITEM
185+77	Lt.	---	Street Sign
197+91	Rt.	24"	Steel Pipe
198+89	Lt.	24"	CMP
205+58	Lt.	24"	CMP
211+98 to 237+27	Rt.	2,525 LF	Barbed Wire Fence
212+32	Lt.	24"	CMP
216+32	Rt.	---	Object Marker Sign
216+38	℄	5'x2'	RCB
216+48	Lt.	---	Object Marker Sign
225+48 to 225+80	Lt.	32 LF	Iron Fence/Gate
225+62	Lt.	21"x15"	CMMAC
228+09 to 230+08	Lt.	199 LF	Woven Wire Fence/Gate
231+30	Lt.	18"	RCP
A <sup>A</sup> FOR INFORMATION ONLY			

AGGREGATE BASE (SPECIAL)						
STATION TO STATION		ROADWAY	SIDE	AGGREGATE BASE (6") (S.Y.)	GEOGRID REINFORCEMENT (FOR BASE)* (S.Y.)	REMARKS
79+00	131+50	135th W.	℄	16,981.0	16,981.0	Includes 95th S.
131+50	133+00	135th W.	℄	984.2	984.2	Includes 87th S.
133+00	142+00	135th W.	℄	2,800.0	2,800.0	See General Notes Sh. No. 2.
142+00	184+75	135th W.	℄	13,300.2	13,300.2	
184+75	236+50	135th W.	℄	16,622.9	16,622.9	Includes 79th S.
TOTALS				50,688.3	50,688.3	

\*For information only. Geogrid is included in the bid item "Aggregate Base (Special) (6")."

MOWING				
STATION TO STATION		ROADWAY	MOWING (MILE PER SIDE)	REMARKS
79+00	236+50	135th W.	6.0	
TOTAL			6.0	

MAILBOX INSTALLATION <sup>B</sup>		
STATION	SIDE	REMARKS
81+86	Rt.	
100+37	Rt.	
103+30	Rt.	
110+66	Rt.	
129+11	Rt.	
140+96	Rt.	
156+86	Rt.	
166+02	Rt.	
176+85	Rt.	

<sup>B</sup>For information only.

SUMMARY OF EARTHWORK QUANTITIES											
STATION TO STATION		EXCAVATION						COMPACTION (IN FILL)		WASTE ψ	
		COMMON		CONTRACTOR FURNISHED		ROCK		TYPE B (MR-90)	TYPE AA (MR-3-3)	COMMON	ROCK
		C.Y.	V.M.F.	C.Y.	V.M.F.	C.Y.	V.M.F.	C.Y.	C.Y.	C.Y.	C.Y.
79+00	131+50	10121	0.87	0	0.87	3389	1.00	2286	2830	4241	3389
131+50	184+75	12158	0.87	0	0.87	3702	1.00	3852	2847	4458	3702
184+75	236+50	11617	0.87	0	0.87	3412	1.00	900	2770	7399	3412
TOTALS		33,896		0		10,503		7,038	8,447	16,098	10,503

<sup>ψ</sup> For information only.

EARTHWORK NOTES

Quantities shown for "Common Excavation" are for excavation within the project limits. Rock Excavation quantities is for the removal of existing asphalt pavement. Quantities were calculated using an average pavement thickness of 8½" between Sta. 79+00 and Sta. 131+50 and 9" between Sta. 131+50 and Sta. 236+50. This represents the best information available and may or may not be representative of the entire project. In the event that the actual quantities encountered in the field exceed those shown here, the Contractor shall remove and dispose of said existing pavement at no additional expense.

No separate measurement or payment will be made for initial consolidation and settlement. Additionally, no separate measurement was made for compaction of earthwork in cut areas outside the roadway. These items shall be SUBSIDIARY to other earthwork bid items.

The Contractor shall place 6" of top soil in all areas to be seeded. This material shall be obtained by striping soil from within the construction limit and shall be free of rocks, rubble, trash and other foreign or toxic material and shall be capable of supporting vegetation. No separate measurement or payment will be made for placing topsoil on this project.

Double handling of material stockpiled, over excavation and placement of material through cuts and over excavation and replacement of material to the original ground line through fills is not quantified and shall be SUBSIDIARY to other earthwork bid items.

This project will not include payment for overhaul. Stockpiling of excavated material due to staged construction and/or double handling of excavated material required to complete the embankment will not be paid for separately, but shall be SUBSIDIARY to other earthwork bid items.

COUNTY	STATE	PROJECT NUMBER	FISCAL YEAR	SHEET NO.	TOTAL SHEETS
SEDGWICK	KANSAS	R259A	2015	38R	112

REVISED PLANS

RECAPITULATION OF ROAD QUANTITIES		
ITEM	QUANTITY	UNIT
Contractor Construction Staking	1	Lump Sum
Field Office	1	Each
Mobilization	1	Lump Sum
Removal of Existing Structures	1	L.S.
Maintenance and Restoration of Haul Road (Set Price)	1	Lump Sum
Clearing and Grubbing	1	L.S.
Common Excavation	33,896	Cu. Yd.
Rock Excavation	10,503	Cu. Yd.
Water (Grading) (Set Price)	1	M-Gal.
Compaction of Earthwork (Type B) (MR-90)	7,038	Cu. Yd.
Compaction of Earthwork (Type AA) (MR-3-3)	8,447	Cu. Yd.
Water (Earthwork Compaction) (Set Price)	1	M-Gal.
Aggregate Base Special (6")	50,688	Sq. Yd.
Concrete (Grade 4.0)	57	Cu. Yd.
Concrete (Grade 4.0) (AE)	25	Cu. Yd.
Reinforcing Steel (Grade 60)	1,950	Lbs.
Reinforcing Steel (Grade 60) (Epoxy Coated)	7,850	Lbs.
Foundation Stabilization	35	Cu. Yd.
Concrete for Seal Course (Set Price)	1	Cu. Yd.
Granular Backfill (Wingwalls)	32	Cu. Yd.
Crossroad Pipe (18") (RCP)	120	Lin Ft.
Crossroad Pipe (24") (RCP)	142	Lin Ft.
Crossroad Pipe (36") (RCP)	72	Lin Ft.
Crossroad Pipe (3.0 Sq. Ft.) (RCPHE)	173	Lin Ft.
Crossroad Pipe (4.0 Sq. Ft.) (RCPHE)	162	Lin Ft.
Crossroad Pipe (5.0 Sq. Ft.) (RCPHE)	114	Lin Ft.
Crossroad Pipe (6.0 Sq. Ft.) (RCPHE)	62	Lin Ft.
Entrance Pipe (15") (RCP)	234	Lin Ft.
Entrance Pipe (18") (RCP)	354	Lin Ft.
Entrance Pipe (24") (RCP)	271	Lin Ft.
Entrance Pipe (30") (RCP)	56	Lin Ft.
Entrance Pipe (1.5 Sq. Ft.) (RCPHE)	72	Lin Ft.
Entrance Pipe (5.0 Sq. Ft.) (RCPHE)	166	Lin Ft.
Entrance Pipe (6.0 Sq. Ft.) (RCPHE)	144	Lin Ft.
Storm Sewer (12") (RCP)	26	Lin Ft.
End Section (12") (RC)	2	Each
End Section (15") (RC)	10	Each
End Section (18") (RC)	20	Each
End Section (24") (RC)	22	Each
End Section (30") (RC)	4	Each
End Section (36") (RC)	2	Each
End Section (1.5 Sq. Ft.) (RCHE)	4	Each
End Section (3.0 Sq. Ft.) (RCHE)	6	Each
End Section (4.0 Sq. Ft.) (RCHE)	4	Each
End Section (5.0 Sq. Ft.) (RCHE)	16	Each
End Section (6.0 Sq. Ft.) (RCHE)	10	Each
Temporary Surfacing Material (Aggregate) (Set Price)	1	Cu. Yd.
Mailbox Installation (Set Price)	1	Each
Mowing	6.0	Mi/Side
Traffic Control	1	Lump Sum
G20-Special Signing	4	Each
Solar Powered Portable Dynamic Message Sign	4	Each

For Temporary Erosion and Pollution Control Quantities, see Sh. No. 40.  
For Seeding Quantities, see Sh. No. 47.  
For Surfacing Quantities, see Sh. No. 49R.  
For Pavement Marking Quantities, see Sh. No. 48.  
For Traffic Control Quantities, See Sh. No. 62R. (FOR INFORMATION ONLY)

Reconstruction of 135th St West  
SUMMARY OF QUANTITIES  
SHEET 1 OF 2

PREPARED BY SEDGWICK COUNTY PUBLIC WORKS HIGHWAY DEPARTMENT					
DAVID C. SPEARS, P.E.	DIRECTOR/COUNTY ENGINEER				
REVISED	SCALE	DESIGNED	DRAWN	CHECKED	SHEET NO.
	NONE	L.T.P.	L.T.P.	D.J.S.	38R
	DATE	12/2014	12/2014	1/2015	

1/26/2014	Corrected pipe and end section quantities to match plans.	L.T.P./L.T.P.
1/26/2014	Corrected qty. of Solar Powered Portable Dynamic Message Sign	L.T.P./L.T.P.

Device: DWG To PDF.pc3 Page Setup: ----- By: Packer, Lynn T. O:\Projects\R259A\Summary of Quantities.dwg Layout: Summary Of Quantities (2) Plotted: 1/26/2015 11:37 AM

COUNTY	STATE	PROJECT NUMBER	FISCAL YEAR	SHEET NO.	TOTAL SHEETS
SEDGWICK	KANSAS	R259A	2015	39R	112

REVISED PLANS

DRAINAGE STRUCTURES																															
STATION	LOCATION	TYPE	Size	CONCRETE GRADE 4.0 (CU. YD.)	CONCRETE GRADE 4.0 (AE) (CU. YD.)	REINFORCING STEEL (GR. 60) (LBS.)	REINFORCING STEEL (GR. 60) (EPOXY COATED) (LBS.)	CROSSROAD PIPES (L.F.)						ENTRANCE PIPES (L.F.)						END SECTIONS (EACH) <sup>a</sup>											
								18" (RCP)	24" (RCP)	36" (RCP)	3.0 Sq. Ft. (RCPHE)	4.0 Sq. Ft. (RCPHE)	5.0 Sq. Ft. (RCPHE)	6.0 Sq. Ft. (RCPHE)	15" (RCP)	18" (RCP)	24" (RCP)	30" (RCP)	1.5 Sq. Ft. (RCPHE)	5.0 Sq. Ft. (RCPHE)	6.0 Sq. Ft. (RCPHE)	15" (RC)	18" (RC)	24" (RC)	30" (RC)	36" (RC)	1.5 Sq. Ft. (RCHE)	3.0 Sq. Ft. (RCHE)	4.0 Sq. Ft. (RCHE)	5.0 Sq. Ft. (RCHE)	6.0 Sq. Ft. (RCHE)
135th Street																															
84+67	℄	CRP	2–5.0 Sq. Ft.										114																4		
99+04	Rt.	EP	1.5 Sq. Ft.															42					2								
100+54	Rt.	EP	1.5 Sq. Ft.															30					2								
110+67	Lt.	EP	18"												40							2									
114+24	℄	CRP	6.0 Sq. Ft.									62																		2	
119+92	Rt.	EP	2–24"													86															
119+92	Lt.	EP	18"																			2									
120+84	Lt.	EP	18"																			2									
123+05	Lt.	EP	18"																			2									
126+96	Lt.	EP	18"																			2									
128+83	Lt.	EP	18"																			2									
135+25	℄	CRP	36"																												
136+75	Lt.	EP	2–5.0 Sq. Ft.																						2					△ 4	△ 0
140+82	Rt.	EP	15"																												
140+92	℄	CRP	4.0 Sq. Ft.																			2									
140+98	℄	CRP	4.0 Sq. Ft.																												
145+23	Rt.	EP	24"																												
145+89	Rt.	EP	24"																												
150+50	Rt.	EP	24"																												
156+71	Rt.	EP	24"																												
158+33	Rt.	EP	18"																												
158+43	Lt.	EP	15"																												
160+76	℄	CRP	2–24"																												
163+68	Lt.	CRP	18"					66	142																						
171+78	℄	RCB	5'x3'x70'	26.3	10.0	950	3380																								
172+95	Lt.	EP	2–6.0 Sq. Ft.																											4	
176+86	Lt.	EP	2–30"																												
181+22	Rt.	EP	2–6.0 Sq. Ft.																											4	
198+48	Rt.	EP	15"												△ 40																
198+88	Lt.	EP	18"												40								2								
205+57	Lt.	EP	15"																					2							
212+50	Rt.	EP	2–5.0 Sq. Ft.																										4		
212+50	Lt.	EP	15"																												
216+37	℄	RCB	8'x3'x58'	30.8	14.9	1000	4470																								
225+63	Lt.	EP	24"																												
231+30	Lt.	EP	18"																												
95th Street																															
950+43	℄	CRP	3.0 Sq. Ft.									61															2				
87th Street																															
867+35	Lt.	EP	2–5.0 Sq. Ft.																										4		
870+49	℄	CRP	18"																												
79th Street																															
789+56	℄	CRP	3.0 Sq. Ft.									60															2				
790+41	℄	CRP	3.0 Sq. Ft.									52															2				
TOTALS				57	25	1,950	7,850	120	142	72	173	162	114	62	234	354	271	56	72	166	144	10	22	18	4	2	4	6	4	16	10

△

△

<sup>a</sup> End sections for storm sewer are quantified in table below.

△

△

CONDUIT DATA														
LOCATIONS OF INSTALLATIONS*					CONSTRUCT OR INSTALL			FLOWLINES		STORM SEWER (LIN. FT.)		END SECTIONS (EACH)		REMARKS
STATION	ROUTE IDENTIFICATION	DISTANCE LEFT/RIGHT	NORTHING	EASTING	TYPE OF CONDUIT		LENGTH (L.F.)	INFLOW ELEV.	OUTFLOW ELEV.	12" (RCP)		12" (RC)		
					SIZE	MATERIAL								
137+50	135th St.	58.0' Rt.	1630055.36	1603389.10	12"	RCP	26		1322.33	26		1		
137+25	135th St.	42.7' Rt.	1630029.96	1603374.44				1322.30				1		
TOTALS:										26		2		

\* Station and offset point based on end of pipe end section.

△

1/26/2014	Corrected pipe and end section quantities to match plans.				L.T.P./L.T.P.
Reconstruction of 135th St West					
SUMMARY OF QUANTITIES					
SHEET 2 OF 2					
PREPARED BY					
SEDGWICK COUNTY PUBLIC WORKS					
HIGHWAY DEPARTMENT					
DAVID C. SPEARS, P.E.			DIRECTOR/COUNTY ENGINEER		
REVISED	SCALE	DESIGNED	DRAWN	CHECKED	SHEET NO. <b>39R</b>
	NONE	L.T.P.	J.J.R.	D.J.S.	
	DATE	12/2014	1/2015	1/2015	

Device: DWG To PDF.pc3 Page Setup: ----- By: Packer, Lynn T. O: \\Projects\\R259A\\rd051.dwg Layout: RD051-Summ. Surfacing Plotted: 1/26/2015 12:42 PM

GENERAL NOTE:

On surfacing projects, the 6" of Compaction Type AA, shown for the center portion of the roadbed, is for the purpose of restoring the original Compaction Type AA which may have been lost since grading operations. The exact locations of this Compaction Type AA, which will be required, is to be determined by the Engineer at the time of construction. This work shall be paid under the bid item "Compaction of Earthwork (Type AA) (MR- )".

Over all structures, unless otherwise directed by the Engineer, where the top of the hubguard is level with or above the finished shoulder grade, the earth cover over the structure slab shall be removed and backfilled with \_\_\_\_\_ material as directed by the Engineer. The removal of this material will be subsidiary.

The \_\_\_\_\_ material used to backfill over the structure shall be paid for at the prices shown in the contract.

The earth shoulders shall be compacted full depth (Type -MR ) except, when ordered by the Engineer, the top 3" shall be left uncompacted for seeding.

All side roads and house entrances shall be surfaced with \_\_\_\_\_ to the R/W line as indicated on the detail. All side roads and house entrances with existing asphalt surface shall be surfaced with \_\_\_\_\_ at least to the R/W line or to the end of construction as directed by the Engineer. Each mailbox turnout (ON PROJECTS WHERE STABILIZED SHOULDERS ARE NOT SPECIFIED) shall be surfaced with \_\_\_\_\_ to the limits shown on the detail.

Surfacing material (SA-\_\_\_\_\_) shall be used for surfacing house entrances and side roads ( \_\_\_\_\_ C.Y./SQ. YD.) beyond the limits of the asphalt surface to the limits of construction as determined by the Engineer.

The thickness of side road and entrance surfacing may be increased to the same thickness as the stabilized shoulder within the approximate limits of the shoulder.

On projects which specify both asphalt base and surface course materials, side roads, house entrances and mailbox turnouts may be surfaced with both materials at the contractors option, with the approval of the Engineer.

Quantities for aggregate for shoulders, AS-1, are calculated on the basis of 150 lbs. per cu. ft. Quantities for stabilized base course, AB-3, are calculated on the basis of 156 lbs. per cu. ft. Weight/cu. ft. includes moisture allowed by specification.

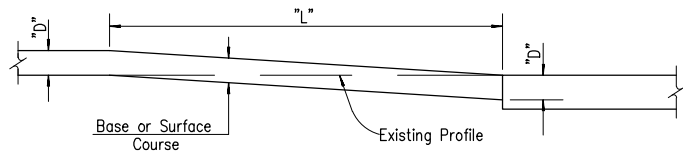
The base course shall be constructed to the plan thickness as shown.

Thicknesses indicated for all construction which is paid for on a weight or volume basis are approximate and may vary to correct for unevenness in the foundations or for other normal unevenness encountered in placement operations.

A tack coat of SS-1HP shall be provided between each lift of all base courses and under the first lift of base when they are placed on an existing asphalt, brick, or concrete surface, when so ordered by the Engineer and at the rate designated by him. A tack coat of EBL shall be provided for the surface lift at the rate of 0.15-0.20 gal./sq. yd.

Asphalt Material quantities are calculated on the basis of 8.328 lbs. per gal.

Shoulder rumble strips will not be constructed as part of this project.



TYPICAL PROFILE AT GRADE CONTROL POINTS

The Contractor shall cut the subgrade in accordance with this profile at all grade control points, i.e.; existing pavements, grade bridges and R.R. crossings, also at changes in thickness of base or surface courses. Corresponding dimensions of "D" and "L" shall be as given in the table below.

The work of cutting the subgrade and disposing of excess excavated material shall be subsidiary to other items in the contract.

TABLE OF DIMENSIONS											
D	L	D	L	D	L	D	L	D	L	D	L
1"	25'	3"	75'	5"	125'	7"	175'	9"	225'	11"	275'
2"	50'	4"	100'	6"	150'	8"	200'	10"	250'	12"	300'

SUMMARY OF QUANTITIES											
STATION TO STATION*		ROADWAY	SIDE	5" PLANT MIX ASPHALT (BASE) (TONS)*	2" PLANT MIX ASPHALT (SURFACE) (TONS)§	6" PLANT MIX ASPHALT (ENTRANCES) (BASE) (TONS)§	SURFACING MAT'L (AB-3) (TONS)Δ	MILLING (S.Y.)	SURFACING MAT'L (AB-3) (PROVIDE ONLY) (TONS)	ROAD GRAVEL* (PROVIDE ONLY) (TONS)	KEEL (PROVIDE ONLY) (TONS)
78+75	79+00	135th W.	℄		8.25			72.2			
79+00	131+50	135th W.	℄	4,510.35	1,898.25	346.65	224.10	74.9			
131+50	184+75	135th W.	℄	4,537.10	1,901.30	553.95	293.20				
184+75	236+50	135th W.	℄	4,414.80	1,850.00	37.70	448.20				
236+50	236+75	135th W.	℄		8.25			72.2			
Road Maintenance <sup>7</sup>									300.0	2,500.0	200.0
TOTALS				13,462.25	5,666.05	938.30	965.50	219.3	300.0	2,500.0	200.0

\* Includes sideroads. Computed at the rate of 145 lbs/ft<sup>3</sup> and increased 10% for contingencies.

§ Includes sideroads. Computed at the rate of 145 lbs/ft<sup>3</sup> and increased 5% for contingencies.

Δ Surfacing material for field entrances. See Sh. No. 23 for details. Computed at the rate of 156 lbs/ft<sup>3</sup>.

\* Quantities included for Road Maintenance are for upkeep of local township roads. Contractor to provide material only as needed. See Special Provision General Note.

\* Road gravel shall be the equivalent of dirty pea gravel for use on township roads only.

SUMMARY OF QUANTITIES (SHOULDERS)						
STATION TO STATION	SIDE	WIDTH	AGGREGATE FOR SHOULDERS (AS-1) (TON)*	CALCIUM CHLORIDE (TON)▲	WATER (AGG. SHLDR) (M. GAL.)	REMARKS
79+00	131+50	Lt.	7'-0"	1,550.0	0.0	(Set Price) Includes var. shoulder at 95th S
79+00	131+50	Rt.	7'-0"	1,569.5	0.0	(Set Price) Includes var. shoulder at 95th S
131+50	184+75	Lt.	7'-0"	1,566.3	0.0	(Set Price) Includes var. shoulder at 87th S
131+50	184+75	Rt.	7'-0"	1,548.0	0.0	(Set Price) Includes var. shoulder at 87th S
184+75	236+50	Lt.	7'-0"	1,524.5	0.0	(Set Price) Includes var. shoulder at 79th S
184+75	236+50	Rt.	7'-0"	1,549.7	0.0	(Set Price) Includes var. shoulder at 79th S
TOTALS				9,308.0	0.0	

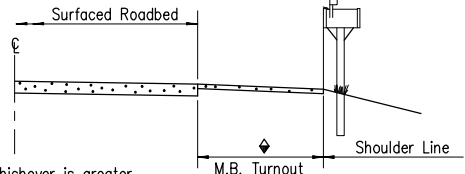
▲ Computed at the rate of 150 lbs/ft<sup>3</sup>.

RATES OF APPLICATION				
RATE	UNIT	ITEM		
39.3	Ton	Plant Mix Asphalt Mixture-Commercial Grade (Base) (5")	per Ln./Sta.	13 ft. In.
15.7	Ton	Plant Mix Asphalt Mixture-Commercial Grade (Surface) (2")	per Ln./Sta.	13 ft. In.
0.05	Gal.	Emulsified Asphalt (SS-1HP) for Tack	per sq. yd.	

RECAPITULATION OF QUANTITIES			
ITEM	TOTAL	UNIT	
Plant Mix Asphalt Mixture-Commercial Grade (Base) (5")	13,462	Tons	
Plant Mix Asphalt Mixture-Commercial Grade (Surface) (2")	5,666	Tons	
Plant Mix Asphalt Mixture-Commercial Grade (Base) (6")	938	Tons	
Milling	219	Sq. Yds.	
Surfacing Material (AB-3)	966	Tons	
Aggregate For Shoulders (AS-1)	9,308	Tons	
Calcium Chloride	▲ 0	Tons	
Water (Aggregate Shoulders) (Set Price)	1	M. Gal.	
Surfacing Material (AB-3) (Provide Only)	300	Tons	
Road Gravel (Provide Only)	2,500	Tons	
Keel (Provide Only)	200	Tons	

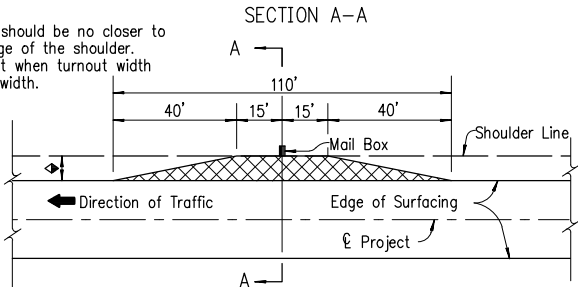
REVISED PLANS

STATE	PROJECT NUMBER	FISCAL YEAR	SHEET NO.	TOTAL SHEETS
KANSAS	R259A	2015	49R	112

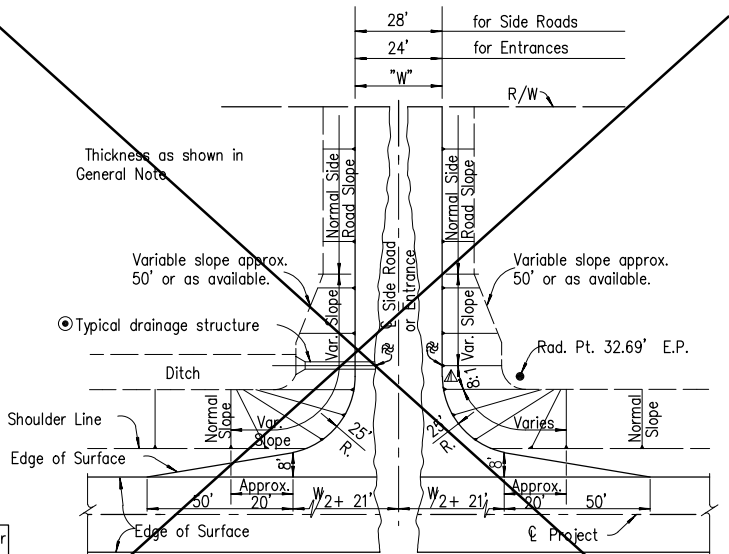


◆ Width shall be 8' or shoulder width, whichever is greater.

Note: The face of Mail Box should be no closer to the roadway than the edge of the shoulder. Align with edge of turnout when turnout width is greater than shoulder width.



DETAIL FOR SURFACING OF MAIL BOX TURNOUTS



See Sh. No. 24 for entrance details.

WITH DRAINAGE STRUCTURE

MOUND ENTRANCE OR SIDE ROAD

DETAIL FOR SURFACING OF SIDE ROADS & HOUSE ENTRANCES

▲ 8:1 Slope at the appropriate clear zone shall apply to all mound entrances and mound side roads to 10' fill height. Normal Slope (but not steeper than 6:1) for over 10' fill height.

● Normal Slope (but not steeper than 6:1) at approximate ℄ Structure or appropriate clear zone width.

⊗ On side roads and entrances which slope toward the highway, a low point approx. 6" deep shall be constructed to divert surface drainage into the high-way ditch, unless otherwise shown on the plans.

12	1-10-07	Changed bituminous to asphalt	S.W.K.	J.O.B.
11	8-30-06	Changed tack type/rate	S.W.K.	J.O.B.
10	3-24-05	Revised compaction, tack type/rate	S.W.K.	J.O.B.
9	6-12-02	Added low point off shoulder.	S.W.K.	J.O.B.

NO.	DATE	REVISIONS	BY	APP'D
-----	------	-----------	----	-------

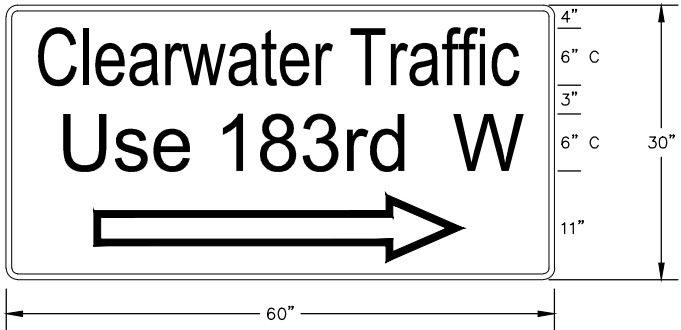
SUMMARY OF QUANTITIES (Surfacing)

RD051	49R/112			
FHWA APPROVAL	9-06-06	APP'D, James O. Brewer		
DESIGNED	QUANTITIES	TRACED	Brewer	
DESIGN CK.	DETAIL CK.	QUAN CK.	TRACE CK.	Hecht

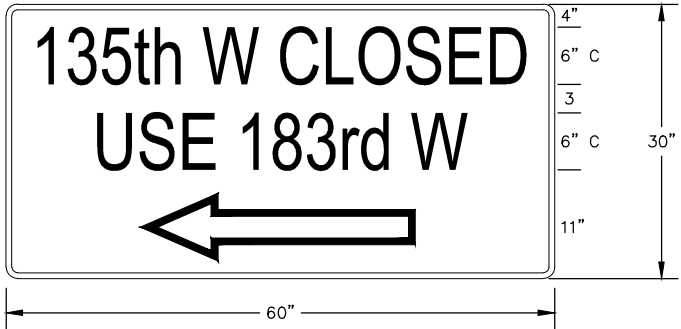


Device: DWG To PDF.pc3 Page Setup: ----- By: Packer, Lynn T.  
O:\Projects\R259A\Traffic Control Summary.dwg Layout: TC Summary Plotted: 1/26/2015 2:10 PM

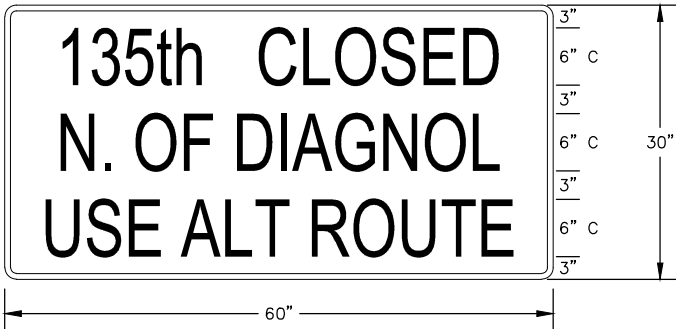
COUNTY	STATE	PROJECT NUMBER	FISCAL YEAR	SHEET NO.	TOTAL SHEETS
SEDGWICK	KANSAS	R259A	2015	62R	112



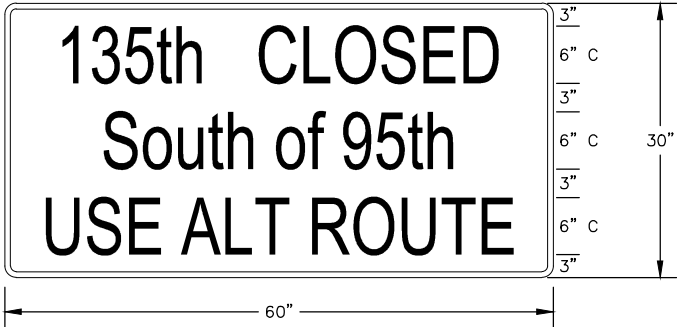
Sign	G20-Special
W x H	60" x 30"
Border Width	1.25"
Corner Radius	2.0"
Mounting	Post
Background	Type: Reflective
	Color: Orange
Legend/Border	Type: Non-Reflective
	Color: Black



Sign	G20-Special
W x H	60" x 30"
Border Width	1.25"
Corner Radius	2.0"
Mounting	Post
Background	Type: Reflective
	Color: Orange
Legend/Border	Type: Non-Reflective
	Color: Black



Sign	G20-Special
W x H	60" x 30"
Border Width	1.25"
Corner Radius	2.0"
Mounting	Post
Background	Type: Reflective
	Color: Orange
Legend/Border	Type: Non-Reflective
	Color: Black



Sign	G20-Special
W x H	60" x 30"
Border Width	1.25"
Corner Radius	2.0"
Mounting	Post
Background	Type: Reflective
	Color: Orange
Legend/Border	Type: Non-Reflective
	Color: Black

Sign Layouts for G20-Special

LIST OF TRAFFIC CONTROL DEVICES												
	MUTCD DEVICE NO.	NO.	FLASHERS		REMARKS	DELINEATORS & CHANNELIZATION DEVICES						
			TYPE A	TYPE B		DEVICE	NO.	SIZE	FLASHERS			
	R11-2	4			ROAD CLOSED	BARRICADES: TYPE III	32	≥ 8'	18	TYPE A	TYPE B	TYPE C
	R11-4Sp	3			See layout on this sheet.	DRUMS						
	R11-3A	1			1 MILE AHEAD	SLIM LINE CHANNELIZERS						
	W20-3	7			1 MILE							
	W20-3	7			1/2 MILE							
	W20-3	1			500 FT.	PAVEMENT MARKING	WHITE	YELLOW				
	W20-3	1			1,500 FT.	4" BROKEN (Lin. Ft.)						
						4" SOLID (Lin. Ft.)						
	G20-Special	4			See layouts this sheet. (60"x30")	TEMPORARY STRIPING (Line Mile)						
FOR INFORMATION ONLY						See Sheet Nos. 59 & 60 for Traffic Control Notes.						

SUMMARY OF TRAFFIC CONTROL		
ITEM	QTY.	UNIT
G20-Special Signing	4	Each
Solar Powered Portable Dynamic Sign	△ 4	Each
Traffic Control	1	L.S.



SIGN LAYOUT FOR R11-4Sp

Sign	R11-4 Special
W x H	60" x 30"
Border Width	3/4"
Corner Radius	2"
Mounting	Post/Barricade
Background	Type: Reflective
	Color: White
Legend/Border	Type: Non-Reflective
	Color: Black

1/26/2014	Corrected qty. of Solar Powered Portable Dynamic Message Sign				L.T.P./L.T.P.
	Reconstruction of 135th St West				
	SUMMARY OF TRAFFIC CONTROL				
	PREPARED BY SEDGWICK COUNTY PUBLIC WORKS HIGHWAY DEPARTMENT				
DAVID C. SPEARS, P.E.			DIRECTOR/COUNTY ENGINEER		
REVISED	SCALE	DESIGNED	DRAWN	CHECKED	SHEET NO.  62R
	None	L.T.P.	L.T.P.	M.R.B.	
	DATE	1/2015	1/2015	1/2015	
DWG: Traffic Control Summary.dwg					