

ADULT DETENTION FACILITY PUBLIC RESTROOMS IN MAIN LOBBY

INVITATION FOR BIDS

PROJECT: Adult Detention Facility – Public Restrooms in Main Lobby
141 W. Elm Street
Wichita, KS 67203

COUNTY BID NUMBER: 15-0104

PRE-BID MEETING:

A pre-bid meeting will be held on site. Bidders are to meet at the Adult Detention Facility located at 141 W. Elm Street, Wichita, KS 67203 beginning at 9:00 a.m. CDT on Wednesday, October 7, 2015.

Attendance is not mandatory; however, this will be the only time to meet directly with County staff and the architect to answer questions concerning this project. General contractors are encouraged to have their subcontractors attend this meeting to view the site conditions.

Bidders are encouraged to examine bidding documents as early as possible. **In order to ensure each bidder has the most current information for bidding there is an established date and time for last questions to be asked. Bidders requiring clarification or interpretation of the Bidding Documents shall make such requests, in writing only, to Kim Evans, Purchasing Agent, at kimberly.j.evans@sedgwick.gov no later than 5:00 p.m. CDT on Wednesday, October 14, 2015.**

RESPONSES TO INVITATION FOR BID:

Responses will be received in the Sedgwick County Purchasing Department, located in the Division of Finance, Main Courthouse, 525 N. Main Street, Suite 823, Wichita, Kansas, until **1:45 p.m. CDT** on Tuesday, October 27, 2015. Late Bids will not be accepted and will not be considered for award recommendation.

BID RESPONSES WILL BE OPENED AT: 2:00 p.m. CDT on Tuesday, October 27, 2015.

This meeting will be held in the Division of Finance, Main Courthouse, 525 N. Main, Suite 823, Wichita, Kansas. All interested parties are invited to attend this meeting, as bids/responses will be received, publicly opened and read aloud.

After review and appropriate approval, a contract will be awarded to the lowest responsive, responsible and best bidder meeting specifications and appropriately licensed to do the specified work outlined in these documents.

Plans and specifications are available in electronic form only and may be downloaded by clicking the following link, www.sedgwickcounty.org. Company information will be collected to generate a plan holder's list which will be updated weekly and available at the Adult Detention Facility Public Restrooms - Main Lobby section of the current RFP/RFQ page at the following link, www.sedgwickcounty.org. Plans are available for viewing only in the County Clerk's office, Main Courthouse, 525 N. Main, Second Floor, Wichita, Kansas.

There will be **NO** Bid Document Deposit for this set of Documents.

A RECOMMENDATION FOR CONTRACT AWARD:

will be made to the Board of Bids and Contracts at its regular meeting at **10:00 a.m. CDT on Thursday, November 12, 2015**, generally held in the County Commission Meeting Room located at 525 North Main, third floor, Wichita, Kansas, although this date or location could change.

CONTRACT AWARD:

Board of County Commissioners will consider award on **Wednesday, November 18, 2015, although this date could change.**

ADULT DETENTION FACILITY PUBLIC RESTROOMS IN MAIN LOBBY

PROJECT SCOPE:

Construct a new ADA accessible unisex restroom in the lobby area at the Adult Detention Facility.

PROJECT CONSTRUCTION BUDGET:

The construction budget for this project is \$84,210.00.

BIDDING DOCUMENTS:

1. Complete sets of Bidding Documents shall be used in preparing Bids.
2. Neither the Owner nor the Architect/Engineer assumes any responsibility for errors or misinterpretations resulting from the use of incomplete sets of Bidding Documents.
3. The Owner or Architect/Engineer, in making copies of the Bidding Documents available, do so only for the purpose of obtaining Bids on the work and do not confer a license or grant for any other use.
4. Bids shall include furnishing all labor, materials, equipment and performing the work for the above-described Project in strict accordance with the Bidding Documents and any Addenda.

DURING BIDDING PERIOD:

Inquiries regarding Bid Documents, Bid/Selection process or any requests for information about this specific project shall be directed in writing only to:

Kim Evans, Purchasing Agent
525 North Main Street, Suite 823
Wichita, KS 67203
Telephone: (316) 660-7258 Fax: (316) 383-7055
E-mail: kimberly.j.evans@sedgwick.gov

OWNER'S REPRESENTATION:

Owner's Representative for the duration of the Project:

Sandy Anguelov, Senior Project Manager
525 North Main Street, Suite 315
Wichita, Kansas 67203
Telephone: (316) 660-9865 Fax: (316) 383-7509
E-mail: sandy.anguelov@sedgwick.gov

Architect's Representative:

Teresa D. Burk
Schaefer Johnson Cox Frey Architecture
Emprise Center
257 N. Broadway Street
Wichita, Kansas 67202
Telephone: (316) 684-0171 Fax: (316) 684-8835
E-mail: tburk@sjcf.com

BIDDER'S REPRESENTATION:

In order to induce the Owner to accept their Bid, in addition to and not in lieu of any other representations and warranties contained in the Bidding Documents, the Bidder represents and warrants the following to the Owner:

1. The Bidder and their subcontractors are financially solvent and possess sufficient working capital to complete the work, and perform all obligations hereunder.

ADULT DETENTION FACILITY PUBLIC RESTROOMS IN MAIN LOBBY

2. The Bidder is able to provide the plant, tools, materials, supplies, equipment, and labor required to complete the work and perform the Bidder's obligations hereunder.
3. The Bidder will be authorized to do business in the State of Kansas, and will be properly licensed to do this work.
4. The Bid and execution of the Bidding Documents and the Bidder's performance thereunder are within the Bidder's duly authorized powers.
5. The Bidder has made an exhaustive study of the Bidding Documents; understands the terms and provisions thereof; and has sought or will timely seek any and all necessary clarifications prior to submitting the Bid; and that the Bid is made in accordance with the foregoing.
6. The Bidder has visited the Project and is completely familiar with the local and special conditions under which the work is to be performed and has correlated such knowledge with the requirements of the Bidding Documents.
7. The Bid is based upon the approved materials, systems and equipment described in the Bidding Documents without exception, including all warranties, coordination and components required to perform the work.
8. The Bidder certifies that their Bid is submitted without collusion, fraud, or misrepresentation as to other Bidders, so that all Bids for the Project result from a free, open and competitive bidding environment.
9. The Bidder possesses a high level of experience and expertise in the business administration, management, and superintendence of projects of the size, complexity and nature of this particular Project, and that the Bidder will work with the care, skill and diligence of such a contractor.
10. The Bidder acknowledges that the Owner is relying upon this Bidder's skill and experience in connection with the work being bid herein.
11. That complete sets of Bidding Documents were used in the preparation of the Bid and that neither the Owner nor the Architect is responsible for errors or misinterpretations resulting from the use of incomplete sets of such Documents.

The foregoing warranties are in addition to, and not in lieu of (A) any and all other liability imposed upon the Contractor by law with respect to the Contractor's duties, obligations and performance of the work and (B) any and all other warranties, representations and certifications made in the Bidding Documents. The Contractor's liability hereunder shall survive the Owner's final acceptance of and payment for the work. All representations and warranties set forth herein and in the Contract Documents shall survive the final completion of the work or the earlier termination of this Agreement.

Bid Guarantee:

1. Bid Security is required in the amount of at least 5% of the bid plus all additional alternates. In case of multiple prices in a bid or alternate, write for the maximum possible contract amount.
2. Bid Security can be in the form of a certified or Cashier's Check or Bid Bond acceptable to Sedgwick County. Checks are to be made payable to the Sedgwick County Clerk and drawn on a solvent Kansas bank or trust company. These checks or bonds will be retained by Sedgwick County until the purchase contract has been awarded.
3. Bid Bonds shall be written by a bonding agency approved by the United States Treasury Department and licensed to do business in the State of Kansas.
4. Bid Bonds shall be submitted on AIA Document A310, latest edition, as issued and approved by the American Institute of Architects.
5. Bid Security will be retained by the Sedgwick County Clerk until the Contract for the Project has been completed and is a guarantee that if awarded the Contract, the Bidder will enter into a contract and give bonds as required. In the event the successful Bidder fails to consummate a signed Contract, through no fault of the Owner, Bid Security shall be retained by the Owner as liquidated damages and not as a penalty.
6. Sedgwick County reserves the right to retain the Bid Security of the three (3) lowest Bidders until the successful Bidder has entered into a Contract or until 60 days after Bid opening, whichever is the shorter. All other Bid Securities will be returned as soon as practicable.

ADULT DETENTION FACILITY PUBLIC RESTROOMS IN MAIN LOBBY

Sedgwick County is desirous of allowing as many Kansas vendors as possible the opportunity to participate, including minority owned, woman owned and small businesses, in the roles of general contractors and subcontractors. If your company does not fall into either of these categories, your efforts to contract with vendors who fall in these categories are appreciated.

General Contractor will be required to maintain a subcontractor worksheet throughout the project and will submit the worksheet to County staff at any time requested but shall submit the worksheet at the completion of project.

END OF INVITATION FOR BIDS

ADULT DETENTION FACILITY PUBLIC RESTROOMS IN MAIN LOBBY

INSTRUCTIONS TO BIDDERS

PROJECT: Adult Detention Facility – Public Restrooms in Main Lobby
141 W. Elm Street
Wichita, KS 67203

COUNTY BID NUMBER: 15-0104

ARCHITECT: Schaefer Johnson Cox Frey Architecture
Emprise Center
257 N. Broadway Street
Wichita, Kansas 67202
Telephone: (316) 684-0171 Fax: (316) 684-8835

Bids shall be made in accordance with these Instructions to Bidders:

- A. Responses to this invitation will be accepted only from General Contractors who are licensed to do business in Sedgwick County.
- B. Applications will also be accepted from General Contractors who have applied to receive a reciprocal license.
- C. A copy of General Contractor's Certificate of Insurance will be required to be submitted with the Bid at the time the bids are due. Insurance policy will be due from the successful contractor as part of the required documents prior to issuance of the notice to proceed.
- D. Bidding Documents shall include the Invitation for Bids, Bid Form, construction drawings, proposed Contract Documents, including any Addenda issued prior to receipt of Bids, supplemental information and any additional information requested.
- E. Bids must be on a lump sum basis and shall be the Contract Amount.
- F. Bidder Qualifications: For the duration of the project, all Prime Bidders shall be located within Sedgwick County, Kansas or establish an office in Sedgwick County, Kansas, and may be required by the Owner to furnish information to support the Bidder's capability to fulfill the Contract if awarded the Contract. Such information does not need to be submitted with the Bid, but may be requested at the Owner's option. Such information may include, but not be limited to, the following:
 1. Proof of registration with the Kansas Director of Taxation by non-resident Bidders (K.S.A. 79-1009).
 2. Proof of registration with the Kansas Secretary of State by foreign corporations.
 3. List of projects of similar size and type the Bidder has constructed or in which the Bidder has been engaged in a responsible capacity.
 4. Evidence the Bidder maintains a permanent place of business.
 5. A current financial statement.

Examination:

1. BEFORE SUBMITTING A BID, each Bidder shall examine carefully all documents pertaining to the work and visit the site to fully inform himself of the condition of the site and the conditions and limitations under which the work is to be performed.
2. SUBMISSION OF A BID will be considered presumptive evidence that the Bidder has fully informed himself of the conditions of the site, requirements of the Contract Documents, and of pertinent national, state and local codes and ordinances, and that the Bid made allowances for all conditions, requirements and contingencies.

ADULT DETENTION FACILITY PUBLIC RESTROOMS IN MAIN LOBBY

3. In reviewing these Documents, it is evident that certain information, if disclosed to the public, may jeopardize the security of Sedgwick County, and appropriate measures will be taken to maintain confidentiality.
4. **In order to ensure each bidder has the most current information for bidding there is an established date and time for last questions to be asked. Bidders requiring clarification or interpretation of the Bidding Documents shall make such requests, in writing only, to the Purchasing Agent no later than 5:00 p.m. CDT on Wednesday, October 14, 2015.**
5. Samples shall be submitted by the above referenced deadline to permit evaluation and notification of Bidders.
6. Any interpretation, correction or change of the Bidding Documents will be made by written Addenda. Interpretations, corrections, or changes of the Bidding Documents made in any other manner will not be binding, and Bidders shall not rely upon such interpretations, corrections, and changes.

Addenda:

1. DISCREPANCIES OR OMISSIONS in the documents will be clarified in the form of an electronic Addendum and will be posted on the County web site. Bidders finding discrepancies, omissions, or who are in doubt as to the meaning of any portion of the Contract Documents, should immediately request an interpretation from the Senior Purchasing Agent. In response, an Addendum will be issued and the contractor shall rely solely on information contained in the written Addenda about said discrepancy or omission. **Neither the Architect nor the Owner will be responsible for any other form of instructions or interpretations given to the contractor, either verbal or written.**
2. ADDENDA received by Bidders shall be acknowledged by same on their Bid Form.

Substitutions:

1. Each Bidder represents that their Bid is based upon materials and equipment described in the Bidding Documents.
2. No substitution will be considered unless written request has been submitted to the Purchasing Agent and the Architect, in duplicate, for approval by 5:00 p.m. CDT on October 14, 2015. Each such request shall include a complete description of the proposed substitute, drawings, cuts, performance or test data, or information necessary for a complete evaluation. If the Architect approves any proposed substitution, such approval will be set forth in an Addendum.

Preparation of Bids:

1. BIDS shall be made on unaltered Bid Forms furnished by the County, or detached from this Project Manual.
2. FILL IN all blanks on the Bid Form with ink or type. Blanks left on Bid Form may be cause for disqualification of Bidder.
3. SIGN BID FORM in longhand, with name typed below signature. Where Bidder is a Corporation, Bids must be signed with the legal name of the Corporation, followed by the legal signature of an officer authorized to bind the Corporation to a contract.
4. RECAPITULATION of work to be done shall not be included with any Bid.

ADULT DETENTION FACILITY PUBLIC RESTROOMS IN MAIN LOBBY

5. Where so indicated by the makeup of the Bid Form, amounts shall be expressed in both words and figures, and in case of discrepancy between the two, the written amount shall govern.

Identification and Submission of Bid:

1. Contractor shall provide one (1) Original of the Bid Response Form, Bid Security and other supplemental information required to be submitted with the Bid.
2. All of the Bid Documents shall be enclosed in a sealed envelope with the notation "Bid Enclosed" on the face. The firm name and address, Bid number, Bid opening date, and Bid opening time shall be provided in the lower left-hand corner of the Envelope.

Modification and Withdrawal of Bid:

1. A Bid may not be modified, withdrawn or canceled by the Bidder during the stipulated time period that a Bidder's Bid Security is held following the time and date designated for the receipt of Bids. The Bidder so agrees in submitting his Bid.
2. WITHDRAWAL BEFORE BID OPENING: A Bid may be withdrawn at any time before Bid Opening, but may not be resubmitted. If a bidder withdraws a bid, as authorized in K.S.A. 75-6905, the awarding authority may require that such bidder shall not be allowed to perform any work on the project through subcontract agreements or by any other means including re-bids.
3. AFTER BID OPENING: No Bid may be withdrawn or modified, except where the award of contract has been delayed for more than 60 days.

In the event of an Award, the lowest, responsive, responsible and best bid price meeting the specifications will be required to enter into contract required for the Project. Said Bidder shall also provide a Performance Bond for the full amount of the contract. The Performance Bond, in the amount of 100% of the Contract amount, must be submitted within 30 calendar days after award of contract. Failure to return these Documents within the required time period may cause a cancellation of the Award.

Consideration of Bids/Selection Process:

1. Bids received will be opened and read aloud publicly.
2. Alternates will be accepted in the order listed on the Bid Form. Owner shall have the right to determine the acceptable Bidder on the basis of the sum of the Base Bid and the Alternates accepted.
3. The Owner will award a contract to the lowest, responsive, responsible and best Bidder provided:
 - a. The Bid conforms to and has been submitted according to the requirements of the Bidding Documents and includes the Certificate of Insurance including Contractor's General Automotive Liability, Workers Compensation Insurance and Owner's Liability Insurance.
 - b. The Bid is judged to be reasonable.
 - c. The Bid does not exceed the funds available.
 - d. The Bid complies with the Instruction to Bidders and Mandatory Requirements.
 - e. The completion time is satisfactory to the Owner.

ADULT DETENTION FACILITY PUBLIC RESTROOMS IN MAIN LOBBY

- f. Evidence of the experience, qualifications and financial responsibility of the Bidder and his Subcontractors and the time of completion are all satisfactory to the Owner.
 - g. The County reserves the right to reject Bidders in accordance with the Bidding Documents.
4. Bids will be screened by a Review Committee consisting of the Project Manager, Architect and the Purchasing Agent.
 5. No negotiations, decisions, or actions shall be initiated by any firm as a result of any verbal discussion with the Owner or employee of the Owner before the opening of responses to the document.
 6. The Owner shall have the right to waive any informality and/or irregularity in any Bid received.
 7. The Owner shall have the right to reject any and all Bids.

Time for Completion and Liquidated Damages:

All Bidders are required to state on the Bid Form the time needed for all work under the general contract to be completed, which would yield their best Bid. Unless otherwise required, this time frame shall be stated in calendar days and shall represent the Contractor's commitment to complete the project on schedule.

The contractual period will begin with the issuance of Notice to Proceed and continue through completion of the project.

The Agreement will include a stipulation that liquidated damages will be assessed in the amount of \$95.00 per calendar day after Completion Date that the work is not substantially complete.

Upon satisfactory completion of the Contract, a formal CERTIFICATE OF PROJECT COMPLETION will be forwarded to the Contractor by the Project Architect. The date of substantial completion of the Project will be the starting date of the warranty period.

All work shall be in accordance with all Federal and State Laws, Local Ordinances and Building Codes, and the 2010 Standards for Accessible Design.

Taxes: Materials and equipment incorporated in the work are exempt from payment of sales tax under the laws of the State of Kansas.

Project Time Line:

The following dates are provided in addition to those previously stated to help interested contractors in planning participation in the project herein. The dates listed, however, are in no way guaranteed and are subject to change without notice.

Project out for bid – Friday, October 2, 2015
Pre-bid Meeting – Wednesday, October 7, 2015 at 9:00 a.m. CDT
Last questions received – Wednesday, October 14, 2015 at 5:00 p.m. CDT
Last Addendum Issued – Wednesday, October 21, 2015 at 5:00 p.m. CDT
Bids Due in Purchasing – Tuesday, October 27, 2015 at 1:45 p.m. CDT
Bid Opening – Tuesday, October 27, 2015 at 2:00 p.m. CDT
Board of Bids and Contracts – Thursday, November 12, 2015 at 10:00 a.m. CDT
Board of County Commissioners – Wednesday, November 18, 2015 at 9:00 a.m. CDT

Notice to Proceed:

ADULT DETENTION FACILITY PUBLIC RESTROOMS IN MAIN LOBBY

No work shall commence until the Owner issues a Notice To Proceed, and a Notice To Proceed will not be issued until all of the following are delivered to the Facility Project Services Office, 525 N. Main Street, Suite 315, Wichita, Kansas, 67203 by the selected vendor:

1. The Contract signed by the representative with authority and ability to do so.
2. Performance and Statutory Bonds with the attached powers of attorney. Attach the receipt of the Clerk of the District Court to the Statutory Bond.
3. List of subcontractors and supplier's proof of a valid Contractor's license from the jurisdiction in which the work is being performed for both contractor and applicable sub-contractors is required.
4. Corporate Resolution of authority to sign and deliver the Contract Documents, executed by the Corporation's Secretary or Assistant Secretary and dated before all other dated submittals.
5. Domestic (Kansas) corporations shall furnish evidence of good standing in the form of a Certificate signed by the Kansas Secretary of State. Foreign (non-Kansas) corporations shall furnish evidence of authority to transact business in Kansas, in the form of a Certificate signed by the Kansas Secretary of State.
6. Construction Schedule with major milestones identified.
7. Insurance Certification for Payment.

Such documents must be delivered within ten (10) days of the Owner's written notification to the successful Bidder. If they are not delivered within such time then the Bidder will be deemed to have abandoned its contract with the Owner, and the Owner will award a contract to the next lowest and best Bid.

1. The successful Bidder shall not make claim either for time or money against the Owner for labor or materials performed or delivered prior to issuance of the Notice to Proceed.
2. The County's responsibility to issue a Notice To Proceed is expressly conditioned on the Contractor's timely execution and delivery of such documents.
3. The County intends to issue a Notice To Proceed within 30 days of receipt of Bids.
4. Bidders shall also note that the Work cannot begin until after a State of Kansas Sales Tax Exemption Certificate has been provided by Sedgwick County and affixed to the Purchase Order and the Notice to Proceed.
5. Contractor must submit Insurance Policy.

END OF INSTRUCTIONS TO BIDDERS

**ADULT DETENTION FACILITY
PUBLIC RESTROOMS IN MAIN LOBBY**

BID FORM

BID PROVIDED BY:

(Company Name)

I have received the Bid Documents, Specifications, and Construction Documents, collectively known as the Contract Documents for Construction of the

Adult Detention Facility – Public Restrooms in Main Lobby

COUNTY BID NUMBER: 15-0104

as prepared by the Schaefer Johnson Cox Frey Architecture:

In submitting this Bid, I agree:

1. To hold my Bid open for 60 days after the date of this Bid.
2. To enter into and execute a Contract, if awarded on the basis of this Bid, and to proceed in accordance with the requirements of the General Conditions and Contract Form.
3. To provide all labor, materials, equipment, tools of trades and labor, accessories, appliances, warranties and guarantees, and to pay all royalties, fees, permits, licenses and applicable taxes necessary to complete the work in accordance with the proposed Contract Documents.
4. To remove and haul away from the construction site any and all debris arising from this contract and to assume sole liability for all removal, handling, and dumping of debris.
5. To comply with any and all local, state, federal or other governmental laws, rules and regulations with respect to the transportation, disposal, and dumping of debris and other excavated materials and Contractor shall secure any and all necessary permits and approvals incident to said transportation, dumping and disposal.
6. To further agree to indemnify and hold the Owner and Designer harmless from any and all claims and/or damage of any kind whatsoever as a result of the Contractor's performance of this Contract.
7. That attached to this Bid is one copy of the Certificate of Insurance including Contractor's General Automotive Liability, Workers Compensation Insurance and Owner's Liability Insurance.
8. **CALENDAR DAYS:**
The Undersigned agrees to reach substantial completion of the Work in _____ consecutive calendar days from the date of Notice to Proceed.

The Undersigned agrees to reach final completion of the Work in _____ consecutive calendar days from the date of Substantial Completion.

Total Calendar Days _____

**ADULT DETENTION FACILITY
PUBLIC RESTROOMS IN MAIN LOBBY**

9. **BID:**
BASE BID
To complete the Base Bid Work, in the time stipulated, in accordance with the Bidding Documents for the lump sum price of:

_____ Dollars (\$_____).

10. **ADDENDA:**
The Bidder acknowledges receipt of the following numbered Addenda:
None () #1() #2() #3 () #4() #5()

11. **AGREEMENTS:**
The Undersigned agrees to the following terms and conditions:

- a. An incomplete Bid, or other information not requested which is written on this Bid Form, may be cause for rejection.
- b. Read the Invitation for Bids and the Instructions to Bidders carefully.
- c. The Owner reserves the right to reject any or all Bids and to waive all technicalities should such action be deemed to be in the best interest of the Owner.
- d. This Bid may not be withdrawn for a period of 60 calendar days following the receipt and opening.
- e. Failure to acknowledge receipt of any Addendum issued may be cause for Bid rejection.
- f. In the event that changes to the work are required, the undersigned agrees that ten percent (**10%**) total between General and Subcontractors of his net costs shall be added thereto for Overhead, Profit and General Requirements (including but not limited to, Insurance and Bonds).

12. **MAJOR SUBCONTRACTORS:**
The Undersigned acknowledges the following named major subcontractors are to be used for their respective division of work. Contractors shall identify by type, any disadvantaged, minority and women-owned businesses used as a subcontractor for this project.

Subcontractor: _____
Address – City, State, Zip: _____

Subcontractor: _____
Address – City, State, Zip: _____

Subcontractor: _____
Address – City, State, Zip: _____

Subcontractor: _____
Address – City, State, Zip: _____

Additional, if necessary:

**ADULT DETENTION FACILITY
PUBLIC RESTROOMS IN MAIN LOBBY**

13. DECLARATIONS:

The Undersigned hereby declares he has carefully examined the Drawings and Specifications, has visited the actual location of the work, has satisfied himself as to all conditions and understands that, in signing this Bid Form, he waives all right to plead any misunderstandings regarding same and agrees to be bound by the provisions of said Drawings and Specifications and all statements made therein.

The Undersigned proposes to enter into Contract and to furnish and pay for the specified Bonds and other required Documents within 10 working days after notification of award of Contract.

14. FIRM IDENTIFYING INFORMATION:

FIRM NAME _____

CONTACT _____

SIGNATURE _____ TITLE _____

PRINT NAME _____

ADDRESS _____ CITY/STATE _____ ZIP _____

PHONE _____ FAX _____ HOURS _____

TAX PAYER I.D. NUMBER _____

COMPANY WEBSITE ADDRESS _____ E-MAIL _____

NUMBER OF LOCATIONS _____ NUMBER OF PERSONS EMPLOYED _____

TYPE OF ORGANIZATION:

Public Corporation ___ Private Corporation ___ Sole Proprietorship ___ Partnership ___ Small Business ___

General Nature of Business _____

Manufacturer _____ Distributor _____ Retail _____ Dealer _____ Service _____

Not a Minority Owned Business ___

Minority Owned Business:

African American ___, Asian ___, Hispanic ___, American Indian ___, Other ___, Woman-Owned ___

15. SIGNATURE AND SEAL:

DATED THIS _____ DAY OF _____, 2015.

LEGAL NAME OF PERSON, FIRM OR CORPORATION

MAILING ADDRESS OF ABOVE

SIGNATURE

TELEPHONE NUMBER FAX NUMBER

(Affix Corporate Seal here)

E-MAIL

**ADULT DETENTION FACILITY
PUBLIC RESTROOMS IN MAIN LOBBY
RFB#15-0104**

BONDS

PERFORMANCE AND LABOR AND MATERIAL BONDS:

PERFORMANCE AND LABOR AND MATERIAL BONDS shall be furnished to the Owner by the Contractor, in an amount equal to 100 percent of the Contract Sum as security for the faithful performance of the contractor and payment of all persons performing labor and furnishing materials in connection with the contract. Said payment bond shall also be executed as a statutory bond and filed in the office of the Clerk of the District Court of the County in which the Project is located. Contractor shall provide the Owner with a certified copy of said statutory bond as so filed.

BONDS FURNISHED shall be written by a SURETY approved by the U.S. Treasury Dept. and licensed to do business in the State of Kansas. No Work shall be commenced until bonds are in force.

FORM OF BOND shall be Statutory Payment Bond – State of Kansas.

POWER OF ATTORNEY for the surety company agent must accompany each bond issued, and must be certified to include the date of the bonds.

PROVIDE TRIPLICATE COPIES of the bond forms and power of attorney.

COST of the bonds shall be included in the bid and paid for by the Contractor.

END OF SECTION

**ADULT DETENTION FACILITY
PUBLIC RESTROOMS IN MAIN LOBBY
RFB#15-0104**

**BOND TO THE STATE OF KANSAS
STATUTORY PAYMENT BOND
(K.S.A. 60-1111, as amended)**

WITNESSETH: That _____ (“Principal”),
and _____ (“Surety”), are
hereby jointly and severally held and firmly bound unto the STATE OF KANSAS in the sum of
_____ dollars
(\$ _____) lawful money of the United States of America, for the use and
benefit of all persons entitled thereto and for the payment of which we hereby bind ourselves,
our successors, assigns, heirs, executors and administrators.

THE CONDITION OF THE OBLIGATION IS SUCH, THAT,

WHEREAS, the Principal has entered into an Agreement with Sedgwick County, Kansas dated
_____, 2015, for improvements described as the

**Adult Detention Facility
Public Restrooms in Main Lobby
141 W. Elm Street
Wichita, KS 67203**

(the “Work”) according to the Contract Documents, which are incorporated herein by reference.

NOW, THEREFORE, if the Principal and its subcontractors shall pay all indebtedness incurred
for supplies, materials or labor furnished, used or consumed in connection with the Work
including gasoline, lubricating oils, fuel oils, grease, coal and similar items used or consumed
directly in furtherance of the Work, then this obligation is to be null and void; otherwise to remain
in full force and effect.

The Surety covenants and agrees that no change, extension of time, alteration or addition to the
Contract Documents or to the Work shall in any way reduce, nullify, or affect the Surety’s
obligations on this bond; and the Surety hereby waives notice on any such change, extension of
time, alteration or additional to said Contract Documents or Work.

IN WITNESS WHEREOF, the parties hereto have caused this instrument to be executed and
delivered this _____ day of _____, 2015.

Principal _____

Title _____

Surety _____

Title _____

**ADULT DETENTION FACILITY
PUBLIC RESTROOMS IN MAIN LOBBY
RFB#15-0104
PERFORMANCE BOND**

WITNESSETH THAT, _____ (“Principal”) and _____ (“Surety”) ARE HELD AND FIRMLY BOUND UNTO THE BOARD OF COUNTY COMMISSIONERS OF SEDGWICK COUNTY, KANSAS, (the “County”), for the use and benefit of claimants herein below identified in the amount of:

_____ dollars (\$_____).

and in the amount of any change orders issued for the Work, for which payment Principal and Surety bind themselves, their heirs, executors, administrators, successors and assigns, jointly and severally, firmly by these presents.

THE CONDITION OF THIS OBLIGATION IS SUCH, THAT,

WHEREAS, Principal has by agreement dated _____, 2015 entered into a contract with the County for the construction described as **Adult Detention Facility – Public Restrooms in Main Lobby – 141 W. Elm Street, Wichita, KS 67023** in accordance with the Contract Documents.

NOW, THEREFORE, if the Principal shall well and truly perform all the covenants, conditions, and obligations of the Contract Documents and any Addenda and Change Orders and shall hold the County and all interested property owners harmless against all claims, loss, damage, demands, or causes of actions which they may sustain or suffer by reason of any breach of said Contract Documents or of negligence of the Principal or of improper execution of the Work or use of inferior materials by the Principal; and if said Principal shall maintain the improvements as provided for in said Contract Documents and shall make good all defects in material and workmanship for a period of one year, or for such other period as provided for in the Contract Documents; then, this obligation shall be void: Otherwise to remain in full force and effect.

FURTHERMORE, the Surety consents and agrees that no price change, extension of time, alteration, or addition to the terms of the Contract Documents or to the Work to be performed thereunder shall in any way affect Surety’s obligation on this bond; and Surety hereby waives notice of any such change, extension of time, alteration or addition to said Contract Documents.

IN WITNESS WHEREOF, the Principal and Surety have duly executed these presents all as of the day and year first above written.

Principal _____

Title _____

Surety _____

Title _____

**ADULT DETENTION FACILITY
PUBLIC RESTROOMS IN MAIN LOBBY
RFB#15-0104**

**CERTIFIED COPY OF A RESOLUTION
OF THE BOARD OF DIRECTORS
OF _____
A KANSAS CORPORATION**

The undersigned, being the duly elected qualified and acting Secretary of _____, a Kansas corporation (the "Corporation"), hereby certifies as follows:

At a special meeting of the board of directors of the Corporation, held _____, 2015, when meeting was duly and properly called according to the by-laws of the Corporation and at which a quorum of said board was present, the following resolution was passed and adopted:

"WHEREAS, the Corporation desires to contract with Sedgwick County, Kansas (the "County") for the construction of certain public improvements, and,

"WHEREAS, the Corporation desires to authorize certain officers of the Corporation to execute and deliver to the County all agreements and documents related thereto.

"NOW, THEREFORE, BE IT RESOLVED BY THE BOARD OF DIRECTORS OF _____, a Kansas corporation, that _____ (name), _____ (title), of the Corporation, be and is hereby authorized to execute and deliver to the County all contracts and documents incidental thereto, including but not limited to statutory bonds, construction bonds, insurance agreements and policies, plans and specifications, and any further documents required thereby, relating or pertaining to the following described project:

**Adult Detention Facility
Public Restrooms in Main Lobby
141 W. Elm Street
Wichita, KS 67203**

"BE IT FURTHER RESOLVED BY THE BOARD OF DIRECTORS OF THE CORPORATION that the authority conferred hereby upon such officer is continuing unless notice in writing be given by the Corporation to the County."

DATED this _____ day of _____, 2015.

(SEAL) Secretary

**ADULT DETENTION FACILITY
PUBLIC RESTROOM IN MAIN LOBBY
RFB#15-0104**

EXHIBIT A

INSURANCE

The Contractor shall carry and maintain coverage as follows:

WORKER'S COMPENSATION

Applicable State: Statutory
Employer's Liability:.....\$100,000

CONTRACTOR'S LIABILITY INSURANCE. Form of insurance shall be a Comprehensive General Liability Automobile Liability.

- 1. BODILY INJURY
Each Occurrence:\$500,000
Aggregate:\$500,000

- 2. PROPERTY DAMAGE
Each Occurrence:\$500,000
Aggregate:\$500,000

- 3. PERSONAL INJURY
Each Person Aggregate:\$500,000
General Aggregate:\$500,000

- 4. AUTOMOBILE LIABILITY. Owned, non-owned and hired.
Bodily Injury, Each Person:\$500,000
Bodily Injury, Each Occurrence:\$500,000
Property Damage, Each Occurrence:.....\$500,000

- 5. PROFESSIONAL LIABILITY:
(Architects/Engineers).....\$500,000

XCU Coverage

Remove Exclusion.

BUILDER'S RISK INSURANCE

In the amount of the initial Contract Sum, plus the value of subsequent modifications and cost of materials supplied and installed by others, comprising the total value for the entire Project on a replacement cost basis without optional deductibles.

UMBRELLA COVERAGE

Following form for both the general liability and automobile:\$500,000

END OF EXHIBIT A

PROJECT SUBCONTRACTING WORK SHEET

Project Name: Adult Detention Facility – Public Restroom in Main Lobby Check here if you are not using subcontractors ____

Bid #	15-0104
General Contractor	
Created by	

General Contractors shall provide the name, description, DBE classification (type) Minority Certification #, date of work and dollar value for each subcontractor (including lower-tier subcontractors) used to complete the referenced project. Contractors may be required to provide back up documentation to verify information. Each column requires input.

DBE classification type: African American (1); Asian (2); Hispanic (3); Native American (4); other minority (5); Women Owned Business (6). Additional general classifications: Small Business Owner (7); Does not meet any classification (0).

	Subcontractor Name and Address	Type	Jurisdiction Name & Minority Certification # (if vendor has one)	Description of Services	Date of Work	Dollar Value of work
1.						
2.						
3.						
4.						
5.						
6.						
7.						
8.						
9.						
10.						

Form shall be submitted to Purchasing at the completion of project.

FORM OF CONTRACT

AIA Document A107 with Supplement "Standard Form of Agreement Between Owner and Contractor For construction Projects of Limited Scope".

Application for Access to the Sedgwick County Adult Detention Facility

Sedgwick County Sheriff's Office

141 W. Elm

Wichita, KS 67203

**DO NOT SUBMIT THIS FORM WITH YOUR BID
THIS IS A SAMPLE THAT WILL BE REQUIRED FOR
ANYONE WORKING IN THIS FACILITY**

SEDGWICK COUNTY DETENTION FACILITY ACCESS APPLICATION

Project start: Date _____

Name (Last) _____ First _____

Middle _____

Other Names Used/Maiden _____

Social Security # _____ Race _____ Gender _____

Date of Birth _____ Place of Birth City/State/County _____

Address _____ City _____ State _____ Zip Code _____

Mailing Address, if Different _____

Home Phone _____ Cell Phone _____ Work Phone _____

E-mail Address _____

Length of Time at Current Residence _____

Previous Address _____

Driver's License # _____ State Issued _____

Emergency Contact Name _____

Home Phone _____ Cell Phone _____ Work Phone _____

Current Employer/Address _____

Current Employer Phone # _____ Length of Employment _____

Have you been convicted of a felony within the last seven years? _____

Have you been convicted of a misdemeanor within the past two years? _____

If yes, complete the following (use the back of this form if necessary):

Misdemeanor Offense: _____

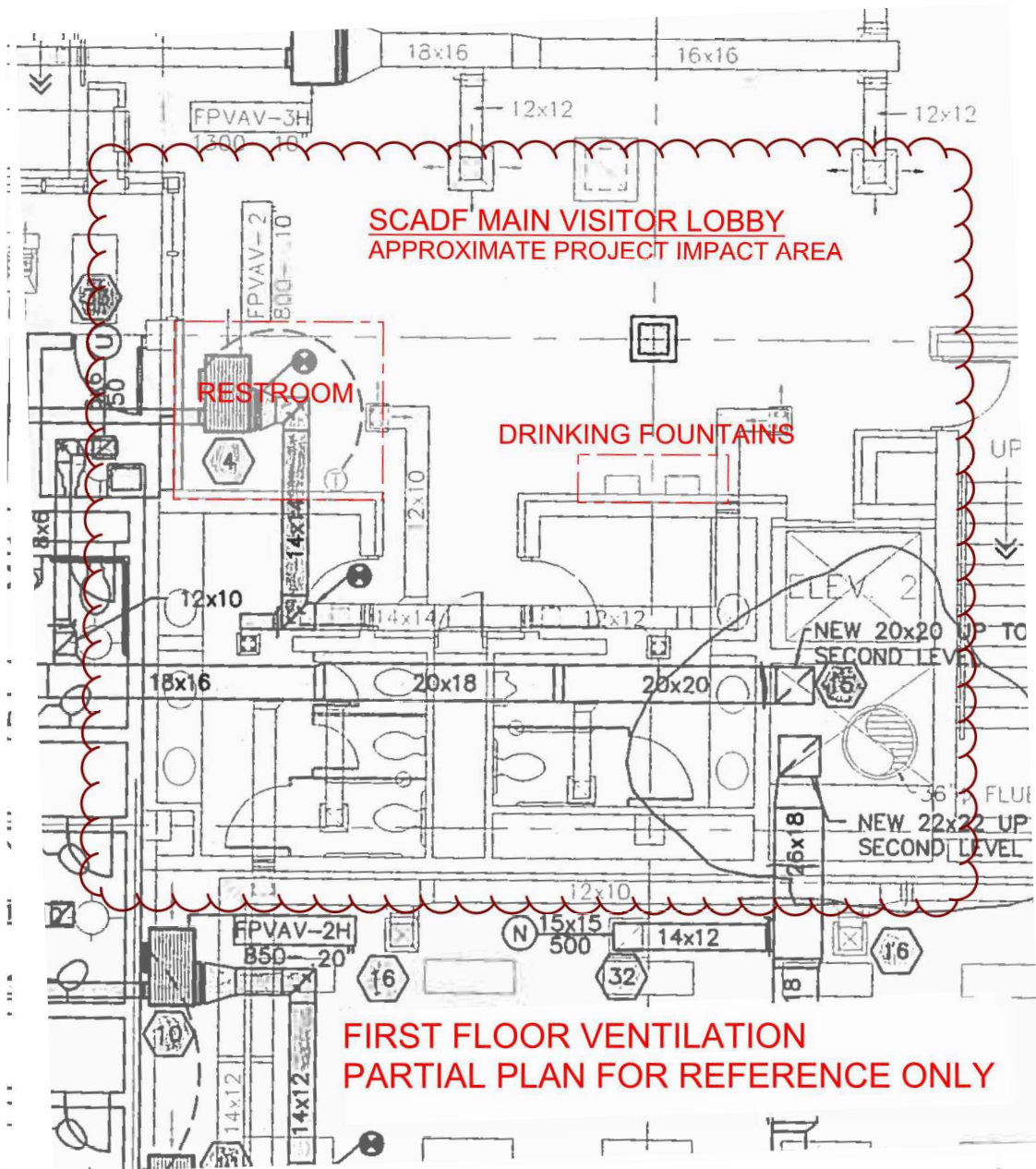
Approximate Date Disposition: _____ Location of Offense: _____

Felony Offense: _____

Approximate Date Disposition: _____ Location of Offense: _____

I authorize the Sedgwick County Sheriff's Office to complete a background check.

Signature: _____ Date: _____



NOT TO SCALE

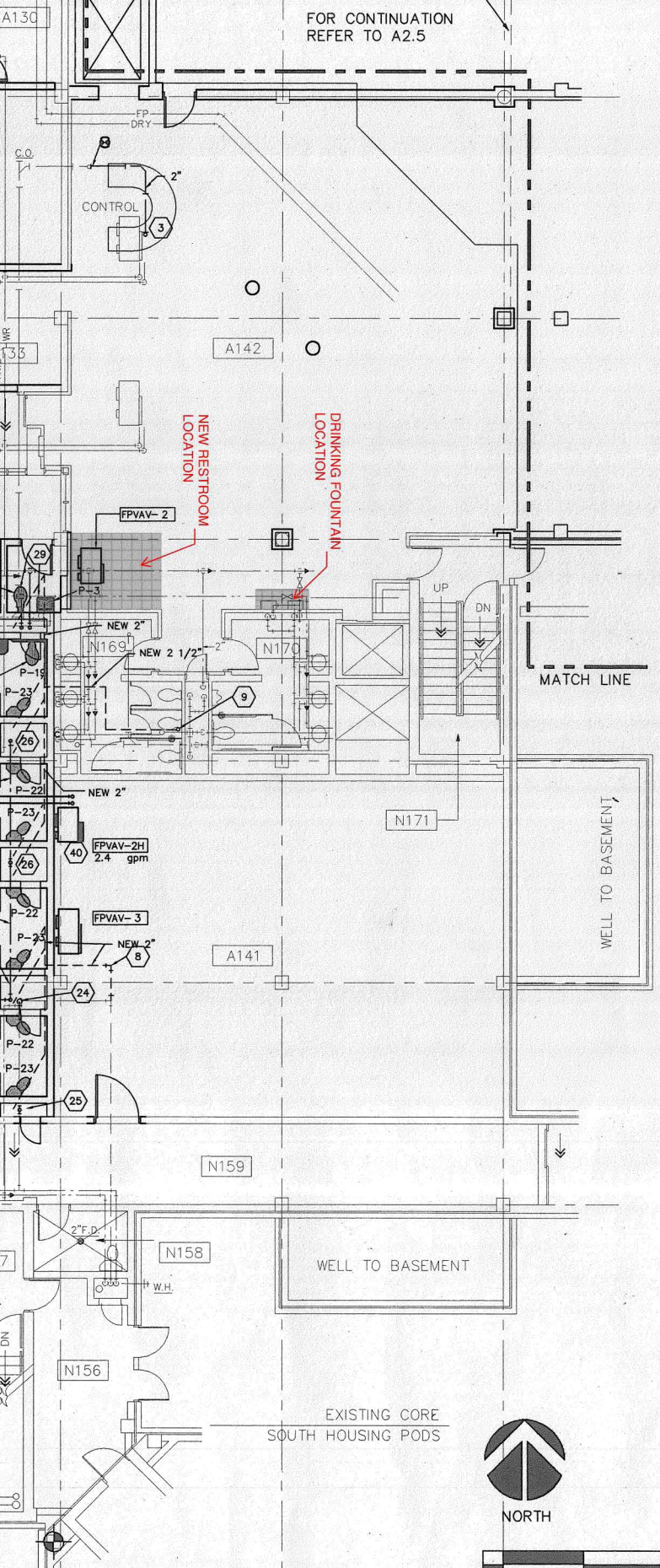
FOR CONTINUATION
REFER TO A2.5

THE "PIPING HANDBOOK" BY SABIN CROCKER, M.E. ONE OR BOTH OF THESE REFERENCES GUIDES ARE TO BE AVAILABLE ON THE PROJECT SITE BY THE MECHANICAL CONTRACTOR.

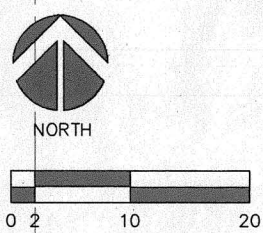
- 10. WHERE WORK OR MATERIALS ARE SPECIFIED, OR SHOWN ON DRAWINGS TO BE PERFORMED, FURNISHED OR PROVIDED BY MORE THAN ONE CONTRACTOR, EACH SUCH CONTRACTOR WILL BE DEEMED TO HAVE FIGURED THE ITEM AND THE ARCHITECT WILL DETERMINE WHO SHALL FURNISH THE WORK AND WHO SHALL SUBMIT THE CREDIT TO OWNER.
- 11. ALL REMOVED FIXTURES SHALL BE RETURNED TO OWNER. RELOCATE FIXTURES WHEN POSSIBLE.

- KEYED NOTES -

- RELOCATE FIXTURES FROM EXIST. TOILET-N142 TO NEW TOILET-A102. REF. M1.2.
- ACCOM. EXIST. 8" R.D. DOWN IN NEW WALL. REF. ARCH.
- PROVIDE 2" W. UP. REF. M3.3.
- RE-ROUTE 3" VENT UP. RUN WITHIN WALL IN A213. REF. M3.3.
- NOT USED.
- NEW 2" VENT FROM BELOW. REF. M3.1.
- RE-ROUTE EXIST. LINES AS REQUIRED TO ACCOMMODATE NEW WALLS.
- TIE NEW 2" VENT FROM W.C.'s INTO EXIST. 2" VENT. REF. M1.2.
- PROVIDE NEW 3" VENT UP THROUGH EXIST. CHASE AS SHOWN. REF. M3.3.
- 1" CW, 1" HW DOWN IN CHASE. PROVIDE BALL VALVE SHUTOFF. EXTEND HEADERS TO FIXTURES.
- 2" WASTE UP TO F.D. REF. M3.3.
- 4" WASTE UP. REF. M3.3.
- TIE NEW 4" WASTE INTO EXIST. 4" WASTE. REF. M3.3.
- NEW 2" VENT UP. REF. M3.3.
- RE-ROUTE 2" VENT FROM BELOW INTO NEW WALL. TIE BACK INTO EXIST. VENT. REF. M3.1 & M3.3.
- RELOCATE FIXTURES FROM EXIST. TOILETS-N233 TO NEW EXAM-A121. REF. M1.3.
- 1 1/2" CW, 1/2" HW DOWN IN CHASE. PROVIDE BALL VALVE SHUTOFF. EXTEND HEADER TO FIXTURES.
- 1 1/4" CW, 1/2" HW DOWN IN CHASE. PROVIDE BALL VALVE SHUTOFF. EXTEND HEADER TO FIXTURES.
- RELOCATE FIXTURES FROM EXIST. TOILET-N147 TO NEW TOILET-A113. REF. M1.2.
- RELOCATE EXIST. W.H. TO THIS LOCATION. PROVIDE 3/4" CW DOWN IN WALL TO W.H. W.H. 3'-0" A.F.F. G.C. TO REPAIR WALL AS REQUIRED. REF. M1.2.
- TIE NEW 2" VENT INTO EXIST. VENT.
- PROVIDE NEW W.H. PROVIDE 3/4" CW DOWN IN WALL TO W.H. W.H. 3'-0" A.F.F. G.C. TO REPAIR WALL AS REQUIRED.
- RELOCATE FIXTURES FROM EXIST. TOILET-N148 TO NEW TOILET-A111. REF. M1.2.
- RE-ROUTE EXIST. 1 1/2" CW DOWN IN CHASE TO NEW W.C. PROVIDE BALL VALVE SHUTOFFS. EXTEND HEADER TO FIXTURES.
- 1 1/4" CW DOWN IN CHASE. PROVIDE BALL VALVE SHUTOFFS. EXTEND HEADER TO FIXTURES.
- 2" CW DOWN IN CHASE. PROVIDE BALL VALVE SHUTOFFS. EXTEND HEADER TO FIXTURES.
- 4" WASTE UP TO NEW F.D. IN A222. REF. M3.3.
- RE-ROUTE 4" W. FROM B.D. THROUGH NEW WALL IN A234/A236. TIE BACK INTO EXIST. 4" W. REF. M1.2 & M3.3.
- RELOCATE FIXTURES FROM EXIST. TOILET-N167 TO NEW TOILET-A136. REF. M1.2.
- RELOCATE FIXTURES FROM EXIST. TOILET-N254 TO NEW HOLDING-A137. REF. M1.3.
- RELOCATE W.C. FROM EXIST. TOILET-N119 TO NEW TOILET-A137. REF. M1.2.
- RELOCATE FIXTURE FROM EXIST. ISOLATION-N123 TO NEW TOILET-A103. REF. M1.2.
- RE-ROUTE EXIST. LINES THROUGH NEW CHASE. PROVIDE BALL VALVE SHUTOFFS IN CHASE. TIE BACK INTO EXIST. LINES AS SHOWN.
- 8" R.D., 8" O.R.D. PIPING DOWN. REF. M3.1.
- WASTE FROM DENTAL SINK TO BE ROUTED SAME AS PREVIOUS.
- AIR, OXYGEN AND VACUUM FROM SECOND LEVEL. REF. M3.3.
- ROUTE MEDICAL GAS LINES TO WALL VALVE BOX MOUNTED @ 4'-0" A.F.F. REF. M6.8.
- REMOVE HWR AND HWS LINES TO MAIN. REF. M1.2.
- INSTALL NEW ISOLATION VALVES ON EXIST. PIPING. MAIN SYSTEM FOR BLDG. TO REMAIN ONLINE. COORD. LOOP SHUTDOWN W/ OWNER.
- PROVIDE NEW HWS & HWR PIPING TO FPVAV. RELOCATE VALVES W/ RELOCATED BOXES.
- GAS SERVICE AND METER BY KGE. GAS PRESSURE REGULATOR 30# TO 5# BY UTIL. 30,250 CFH PRESENT, 39,795 CFH FUTURE CAP. REF. C1.1U.
- GAS PRESSURE REGULATOR. 5# TO 7" W.C. @ 429 CFH. VENT TO ATMOSPHERE.

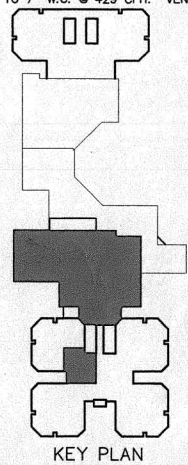


**PARTIAL PLAN - NTS
FOR REFERENCE ONLY**

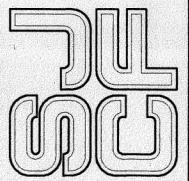


**NEW PLUMBING/PIPING
EXISTING FIRST LEVEL /
NEW SALLYPORT**

FIN. FLR. ELEV. = 100'-0" 1/8" = 1'-0"



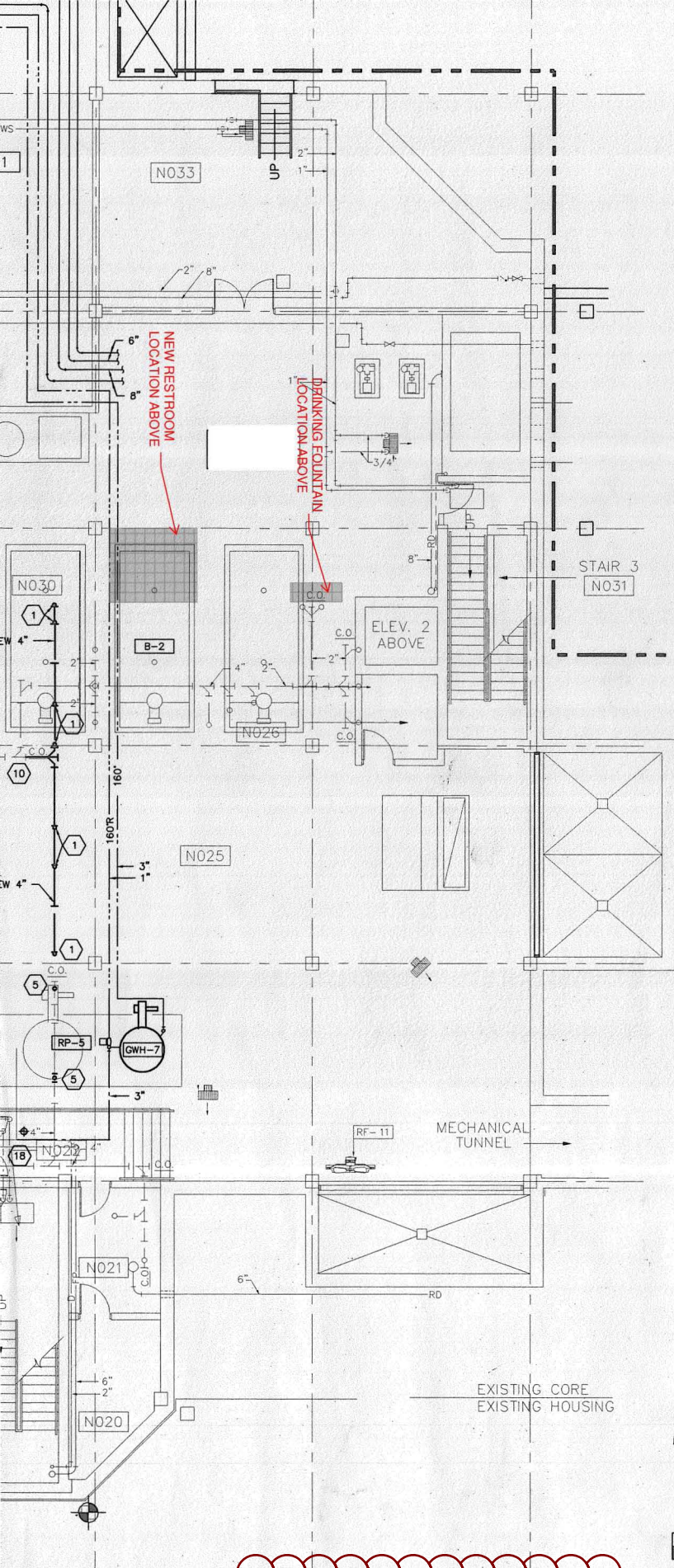
SCHAEFER ARCHITECT
280 SOUTH
19161 684-01



**ADDITION AND REMODEL
SEDGWICK COUNTY
ADULT LOCAL DETENTION FACILITY
WICHITA**

**KANSAS
SEDGWICK COUNTY**

REVISION DATE
PROJECT NO. 2545.00
DATE 11 SEPT 1996
M3.2



9. WHERE WORK OR MATERIALS ARE SPECIFIED, OR SHOWN ON DRAWINGS TO BE PERFORMED, FURNISHED OR PROVIDED BY MORE THAN ONE CONTRACTOR, EACH SUCH CONTRACTOR WILL BE DEEMED TO HAVE FIGURED THE ITEM AND THE ARCHITECT WILL DETERMINE WHO SHALL FURNISH THE WORK AND WHO SHALL SUBMIT THE CREDIT TO OWNER.

10. WHERE WORK OR MATERIALS ARE SPECIFIED, OR SHOWN ON DRAWINGS TO BE PERFORMED, FURNISHED OR PROVIDED BY MORE THAN ONE CONTRACTOR, EACH SUCH CONTRACTOR WILL BE DEEMED TO HAVE FIGURED THE ITEM AND THE ARCHITECT WILL DETERMINE WHO SHALL FURNISH THE WORK AND WHO SHALL SUBMIT THE CREDIT TO OWNER.

11. ALL REMOVED FIXTURES SHALL BE RETURNED TO OWNER. RELOCATE FIXTURES WHEN POSSIBLE.

- KEYED NOTES -

1. 4" WASTE UP. REF. M3.2.
2. 4" WASTE UP TO TRENCH DRAIN. REF. M3.2.
3. 2" UP TO F.D. REF. M3.2.
4. TIE NEW 2" WASTE INTO EXIST. 4" WASTE.
5. 4" WASTE UP. TIE INTO EXIST. 4" WASTE. REF. M3.2.
6. 1/2" CW & HW, 1 1/2" VENT DOWN IN WALL. PROVIDE BALL VALVE SHUTOFFS. EXTEND HEADER TO FIXTURES.
7. 1 1/2" CW, 1/2" HW, 2" VENT DOWN IN CHASE. PROVIDE BALL VALVE SHUTOFFS. EXTEND HEADER TO FIXTURES.
8. RE-ROUTE EXIST. 2" VENT UP THROUGH NEW WALL IN A119. REF. M3.2.
9. TIE NEW 2" VENT INTO EXIST. 2" VENT AS SHOWN. (FIELD VERIFY EXIST. VENT SIZE.)
10. TIE NEW 4" WASTE INTO EXIST. 4" WASTE AS SHOWN. REF. M1.1.
11. EXIST. WASTE LINES TO BE CAPPED AND ABANDONED TO MAIN. REF. M1.1 AND M1.2.
12. 2" VENT UP. REF. M3.2 & M3.3.
13. FIELD VERIFY ROUTING OF EXIST. PLUMBING LINES. RE-ROUTE AS REQUIRED. REF. M3.2 AND M1.1.
14. 8" R.D., 8" O.R.D. PIPING FROM ABOVE. REF. M3.2.
15. REF. C1.1 FOR ROUTING OF UNDERGROUND R.D. PIPING TO STORM WATER SEWER.
16. 2" WASTE UP. REF. M3.2.
17. NEW WASTE PIPING IN THIS AREA TO RUN UNDERGROUND. TIE INTO EXISTING UNDERGROUND WASTE AS SHOWN.
18. EXTEND EXISTING 3" DOMESTIC CW TO GWH-7.
19. PROVIDE MASTER ALARM FOR MEDICAL GAS SYSTEM @ 4'-0" A.F.F.
20. PROVIDE NEW ISOLATION VALVES IN EXIST. HWS & HWR.

REVISION DATE

PROJECT NO.
2545.00

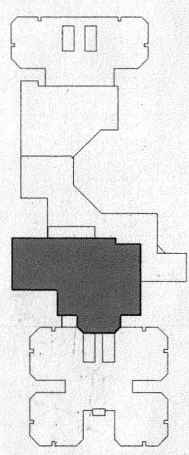
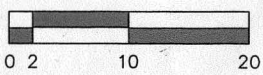
DATE
11 SEPT 1996

M3.1

**PARTIAL PLAN - NTS
 FOR REFERENCE ONLY**



NORTH



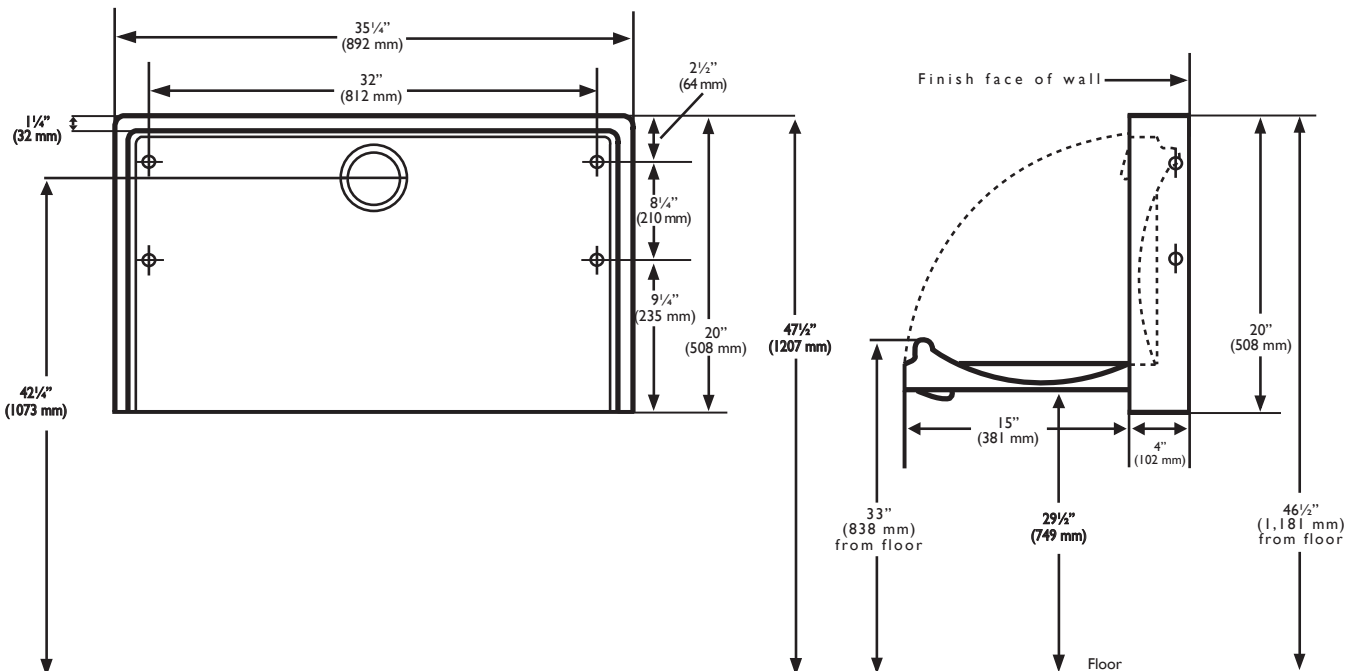
KEY PLAN

**NEW PLUMBING/PIPING
 EXISTING BASEMENT LEVEL**

FIN. FLR. ELEV. = 86'-0" & 83'-0" 1/8" = 1'-0"
 AS SHOWN ON PLAN

KOALA KARE PRODUCTS

KB110-SSWM HORIZONTAL WALL MOUNTED STAINLESS STEEL FINISH BABY CHANGING STATION



MATERIALS:

18 gauge, type 304 satin stainless steel exterior finish with FDA approved blow molded high-density grey polyethylene with Microban® antimicrobial interior. Reinforced full-length steel-on-steel hinge mechanism, with 11-gauge steel mounting plates and mounting hardware included. Molded-in graphics and safety messages in six languages. Contoured changing surface area is 442 sq. in (2852 sq. cm) and comes complete with nylon safety straps and bag hooks.

OPERATION:

Concealed pneumatic cylinder and hinge structure provides controlled, slow opening and closing of bed. High-density polyethylene is easy to clean and resists odors and bacterial growth. Complies with ASTM static load performance requirements when properly installed. Built-in liner dispenser holds approximately 25 KB150-99 sanitary liners.

Warning: To ensure that the unit supports the intended loads, baby changing stations must be properly installed according to the manufacturer's instructions.

SPECIFICATION:

Baby changing station shall have 18-gauge satin stainless steel exterior finish with high-density polyethylene with Microban antimicrobial interior. Design of unit shall be surface-mounted. Unit shall be equipped with a pneumatic cylinder for controlled opening and closing of bed. Bed shall be secured to back plate with a concealed, full-length steel-on-steel hinge. Unit shall have Microban® antimicrobial embedded into plastic material. No hinge structure shall be exposed on interior or exterior surfaces. Unit shall have 11-gauge steel mounting plates with mounting hardware included. Unit shall conform to ICC A117.1-2009 Accessible and Usable Buildings and Facilities, ASTM F 2285-04 Standard Consumer Safety Performance Specification for Diaper Changing Tables for Commercial Use, ANSI Z535.4 Product Safety Signs and Labels, and ASTM G21 Antifungal Standards or local code if more stringent installation requirements are applicable for barrier free accessibility. Unit shall comply with ADA regulations when properly installed. Bed shall have smooth concave changing area with a nylon safety strap and two hooks for bags or purses. Unit shall have a built-in Liner Dispenser for use with 3-ply chemical free biodegradable sanitary liners, universal instruction graphics and safety messages in 6 languages. Unit shall be backed by manufacturer's 5-year limited warranty on materials and workmanship and include a provision for replacement caused by vandalism. Unit shall be manufactured in the U.S.A.

INSTALLATION:

To ensure proper installation and compliance to building codes, it is recommended that a qualified person or carpenter perform the installation of the unit. The unit must be properly installed onto a permanent wall that is capable of supporting significant weight and can accommodate the supplied installation hardware. The Koala Baby Changing Station meets ADA regulations when properly installed.

Drilling holes and mounting the station:

1. Remove the station from the shipping container and check for any freight damage. Identify the best location for installing the baby changing station. Hold the unit in place, open the bed, and make sure that there is adequate operating clearance.

2. Based upon the type of wall on which the unit will be mounted, determine the best method of mounting. Not all of included hardware may be required for proper installation.

3. The horizontal unit has four mounting holes provided in the back wall of the unit, which are positioned on a 32" (813 mm) stud center. If possible, locate the wood or metal wall studs for fastening the changing station in the desired location. If the walls do not have studs on the center as outlined, make sure at least one side of the unit is installed into the stud. Use toggles (not supplied) for holes on the other side.

4. Find the stud where you will be attaching the left side of the changing station to the wall. Measure 44" (1,118 mm) up from the floor, at the center of the stud, and mark the wall. Line up the top left mounting hole with this mark, then use a measuring tape and level to mark the remaining three mounting holes. This will locate the bottom of the station 26½" (673 mm) and the top of the bed at 33" (838 mm) from the floor.

Using Wood Screws:

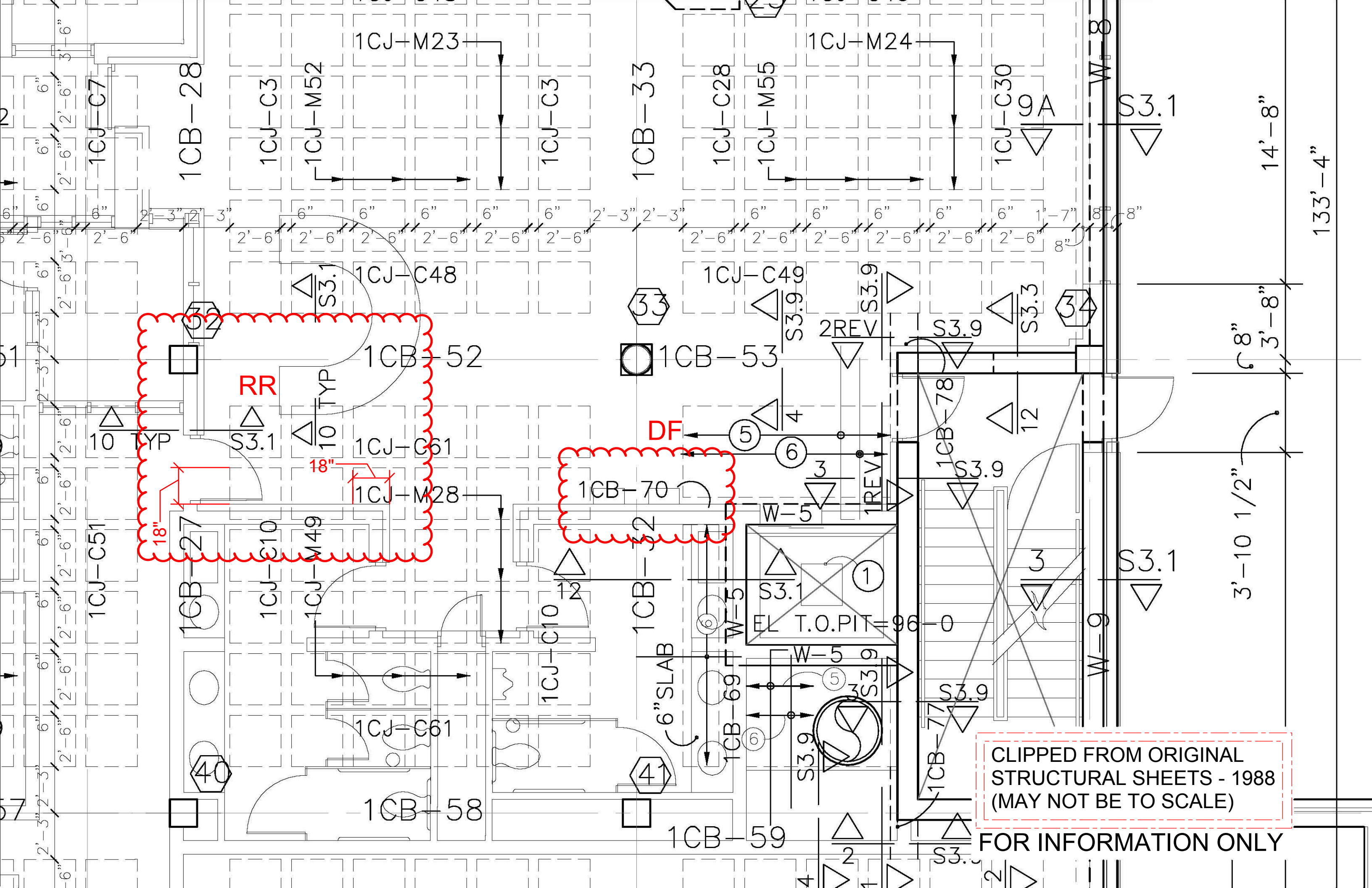
If the wall has wood studs on 16" (406 mm) or 32" (813 mm) centers, drill 1/8" (3 mm) pilot holes at the marks and use the four ¼" x 3" (6 mm x 76 mm) panhead tapping screws with supplied washers. If the wall is masonry or tile over wood studs, use a 7/32" (6 mm) masonry drill until you hit the stud, then proceed to drill 1/8" (3 mm) pilot holes into the studs and use the four ¼" x 3" (6 mm x 76 mm) panhead tapping screws with supplied washers.

Using Toggle Fasteners:

If the wall has wood studs that are not on 16" centers, has metal studs or an underlying surface of concrete block, drill with a 1/2" masonry bit. (You may have to purchase toggles before installing.) You must allow a minimum of inside wall space for toggles to turn depending on toggles used. Insert and tighten toggles.

The illustrations and descriptions herein are applicable to production as of the date of this Technical Data Sheet. The manufacturer reserves the right to, and does from time to time, make changes and improvements in designs and dimensions without notice.





CLIPPED FROM ORIGINAL
STRUCTURAL SHEETS - 1988
(MAY NOT BE TO SCALE)

FOR INFORMATION ONLY

M:\5119\02\CD\ADDENDA\ADDENDUM 1 NOTES\Addendum 1.doc

This Addendum is hereby made part of the Contract Documents to the same extent as though it were originally included therein.

5 All Contractors, Subcontractors and suppliers are reminded that they shall be familiar with all Addenda items (as well as all parts of the Construction Documents) so as to understand the extent of their work and its interrelation with other trades.

To all bidders for furnishing all labor and materials necessary for the following Contract:

10 **GENERAL CONSTRUCTION PACKAGE**
Addition of New ADA Unisex Restroom - Main Lobby
Sedgwick County Adult Detention Facility
141 West Elm Street, WICHITA, KS 67203

15 Prepared by:
Schaefer Johnson Cox Frey Architecture

20 **GENERAL:** **(NOTE: ADDENDUM HAS BEEN REVISED FROM ORIGINAL VERSION)**

ITEM AD1-G01 **PROJECT SPECIFICATION: ACCESS AND RESTRICTIONS (sheet A8)**

25 **REVISION:** **Revise line one, this section, to read, "Work shall be performed during the regular work day, however no sawing, cutting tiles, drilling, or other tasks which make disruptive noises may be done during visitation hours 1PM-5:30PM."**

30 **ITEM AD1-G02** **SUPPLEMENTAL CONDITIONS: DEGREE OF CARE**

35 **CLARIFICATION:** **Tools and construction materials shall not be left outside the work zone and unattended at any time; all tools and portable materials shall be secured at end of each work day. Heavy/bulky materials may be secured in place when construction area is not occupied but Contractor shall be responsible for any missing or damaged items. Owner shall not be held liable for any claim of this nature. Main visitor lobby is open to the public 24/7, and guards are on duty at the security desk all times. Contractor shall be responsible for maintaining separation of workspace/tools from any non-contract persons entering the lobby, erecting a temporary barrier is required.**

45 **CLARIFICATION:** **Contractor shall construct a temporary construction barrier (stud frame wall) to provide protection of lobby space and telephone equipment from construction dust and debris. Cleanliness of telephone equipment is of utmost priority. Enclosure shall also provide secured area for construction equipment and materials during work hours as well as during non-work hours. Area to be enclosed will include new restroom area, the existing restrooms and drinking fountain areas, plus a reasonable space for construction activity. Owner shall approve proposed area prior to construction of temporary enclosure.**

50

5 CLARIFICATION: Contractor shall be required to provide temporary protection of "bus duct system" during all phases of construction having potential for contamination of system. Specifically, but not limited to, core drilling of masonry. Details for coordination with facilities management shall be discussed with the winning bidder.

10 CLARIFICATION: ADA clearances are critical. Architect and Project Manager shall be notified to inspect layout of wall locations once determined, and again when layout of plumbing fixtures is determined. Inspections shall be carried out and layout approved prior to installation of these features.

ITEM AD1-G03 SUPPLEMENTAL CONDITIONS: CONTRACTOR REQUIREMENT

15 CLARIFICATION: No ladders or lift equipment for overhead work, including basement area, shall be provided by Owner. Contractor shall provide ladders and any other equipment as required for accessing work at any project area. Details for direct access to basement for delivering equipment and large components to that area shall be provided to winning bidder. Access into other secured areas shall require an escort and must be coordinated in advance of entry.

20 CLARIFICATION: Contractor shall NOT be responsible for temporary restroom facilities during construction. Owner shall provide access to alternate restrooms during construction period.

25 **ITEM AD1-G04 SUPPLEMENTAL CONDITIONS: ACCESS TO FACILITY**

30 CLARIFICATION: Access to work within secured areas shall be coordinated thru Sandy Anguelov, Senior Project Manager, Sedgwick County Facility Project Services, via email sandy.anguelov@sedgwick.gov, or (Ph) 316.660.9853. After initial coordination, continued access at certain areas may be coordinated thru the Security Desk. Any change in required access for construction shall be coordinated in advance thru Sandy Anguelov. Additional information shall be provided to winning bidder after notice to proceed has been issued.

35 CLARIFICATION: An Application for Access to the Sedgwick County Adult Detention Facility form (attached) must be submitted for any person expected to enter facility in connection with contract project. Background checks shall be performed on each individual and approved persons shall be issued an access badge. No access shall be granted to any person without prior background check AND Owner issued access badge. Winning bidder ONLY shall forward applications directly to Sandy Anguelov at Sedgwick County Facility Project Services, 525 N. Main Street, Suite 315, Wichita, KS 67203.

40 CLARIFICATION: Crews shall be allowed to carry cell phones into construction area, however a list shall be provided to Owner for each contractor, subcontractor, and all employees that will be carrying cell phones into the facility. Submit list of cell phone carriers to Sandy Anguelov, at address above. Any additions to cell phone listing shall be provided one week in advance of person's entry to facility. Lockers for cell phones and other personal items are available in the vestibule for persons not listed with Owner.

ITEM AD1-G05 SUPPLEMENTAL CONDITIONS: PROJECT SUBMITTALS

5 CLARIFICATION: Winning bidder shall not be required to provide electronic submittal service,
nor to hand deliver hardcopy submittals/samples directly to Office of the
Architect, but shall be responsible for timely delivery for either method.
10 Submittals shall be required for all products used in the construction of this
project, including components called out specifically on plans, elevations,
schedules, and specifications on sheets A8, M22.1, M22.2, AND E22.1.
15 Three copies of each submittal, including product cutsheets & (2) physical
samples, shall be provided with sufficient time for Architect's review,
Contractor revision if required, and any lead time required for obtaining
such products. Delivery of physical submittals shall be to TD Burk, SJCF
Architecture, 257 N. Broadway, Wichita, KS 67202. Hand delivered
materials shall be left at the SJCF reception desk, to the attention of TD
Burk.
NOTE: Substitutions of closed spec'd products shall not be considered
unless product is no longer being manufactured, and proposed product
must be reviewed for approval by Architect prior to ordering product.

20 CLARIFICATION: **NO PROJECT PRODUCT DELIVERIES SHALL BE SHIPPED DIRECTLY
TO THE ADULT DETENTION FACILITY. THE JAIL WILL NOT ACCEPT
ANY DELIVERIES FOR THIS PROJECT.**

ITEM AD1-G06 SUPPLEMENTAL CONDITIONS: PARKING/DUMPSTER

25 CLARIFICATION: Once access badges are issued, contractor parking shall be allowed at these
three locations:

- 30 a. 525 Wichita Street, "Law Enforcement Only", 4 spaces only; basement access
available here with access badge.
a. Sedgwick County Employee Parking Garage on Elm Street, access badge required.
b. Street parking as available, no parking in zones marked for other use or "no
parking".

35 CLARIFICATION: A single dumpster may be placed at either of two locations:
a. In Sheriff's compound immediately to the left (East), next to the wall.
40 b. On 525 N. Wichita Street in the grass across from contractor parking.

ITEM AD1-G07 SUPPLEMENTAL CONDITIONS: ADDITIONAL INFORMATION

45 INFORMATION:

- 50 • Bidders shall check the Sedgwick County website for downloadable addendum information
including any addendum-issued drawings and documents. Partial sheets for existing
building conditions for plumbing and ventilation of the project area shall be provided for
reference only.
• Bid date, time, and location remain unchanged. Access and Restrictions listed on sheet
A6 remain unchanged except as listed in this addendum.
• Project shall be compliant to 2010 American's with Disability Act.

DEMOLITION:

ITEM AD1-D01 DRAWING SHEETS, D1

5

DELETE: Delete removal of existing dispensers in existing restrooms, no work shall be done in the existing restrooms except that required to complete construction of new unisex restroom.

10

ARCHITECTURAL:

ITEM AD1-A01 DRAWING SHEETS, A1

15

DELETE: Delete keyed notes #11 from existing restrooms. No work shall be done in the existing restrooms except that required to complete construction of new unisex restroom.

20

ITEM AD1-A02 DRAWING SHEETS, A3

REVISION: Keyed note #9 shall be revised to indicate a horizontal baby changing table. Horizontal unit to be mounted on west wall, with right side of unit mounted within 1" of north wall. ADA required clear space remains the same.

25

ADDITION: Contractor shall provide and install two clothes hooks to interior side of new restroom door. Center hooks on leaf at heights of 47" A.F.F. and at 72" A.F.F. Basis of design: Bobrick B-983 Vandal Resistant Clothes Hook, or approved equal.

30

ITEM AD1-A03 DRAWING SHEETS, A6

REVISION: Keyed note #9 shall be revised to indicate a horizontal baby changing table. Horizontal unit to be mounted on west wall, with right side of unit mounted within 1" of north wall. ADA required clear space remains the same. Revise mounting height to read "46½" A.F.F. TO TOP OF CLOSED UNIT", revise width to read "35 1/4", revise height to read "20", revise manufacturer to read "KOALA CARE HORIZONTAL WALL MOUNT ITEM #KB110-SSWM - SS FINISH".

35

40

REVISION: Delete accessory #11 from accessory schedule. No work shall be done in the existing restrooms except that required to complete construction of new unisex restroom.

45

CLARIFICATION: SIGNAGE DETAILS PROVIDED FOR INFORMATION ONLY. Owner shall provide required signage, contractor shall remove existing signage where required, and install new signage as required. Locations for signage shall be coordinated with Owner and Architect.

50

STRUCTURAL:

ITEM AD1-A03 DRAWING SHEETS, A6

5

CLARIFICATION: Slab at restroom area may be assumed to be approximately 6" in thickness. It shall be permitted to drill thru slab from pan below to determine approximate core locations, then core from above for floor drain and waste line once ribs have been located. Holes shall be confined to area within new chase or inside new restroom perimeter. Reference attached original construction structural floor plan clip for information on location of ribs. This plan is for information only and should not be assumed as absolute locations, nor printed to specific scale.

10

15

MECHANICAL: NONE

20

ELECTRICAL: NONE

25

END OF ADDENDUM NUMBER ONE

DRAFT AIA® Document A107™ - 2007

Standard Form of Agreement Between Owner and Contractor for a Project of Limited Scope

AGREEMENT made as of the << >> day of << >> in the year << >>
(In words, indicate day, month and year.)

BETWEEN the Owner:
(Name, legal status, address and other information)

[Sedgwick County Board of County Commissioners](#)
[525 N. Main](#)
[Wichita, Kansas 67203](#)

and the Contractor:
(Name, legal status, address and other information)

<< >> <>
<< >>
<< >>
<< >>

for the following Project:
(Name, location and detailed description)

[«Adult Detention Facility - Public Restrooms in Main Lobby»](#)
[«Adult Detention Facility](#)
[141 W. Elm Street](#)
[Wichita, KS 67203»](#)
[«Construct a new ADA accessible unisex restroom in the lobby area of the Adult Detention Facility.»](#)

The Architect:
(Name, legal status, address and other information)

[«Schaefer Johnson Cox Frey Architecture >> >>](#)
[«Emprise Center >](#)
[«257 N. Broadway Street >](#)
[«Wichita, KS 67202](#)
[Telephone: \(316\) 684-0171 >](#)

The Owner and Contractor agree as follows.

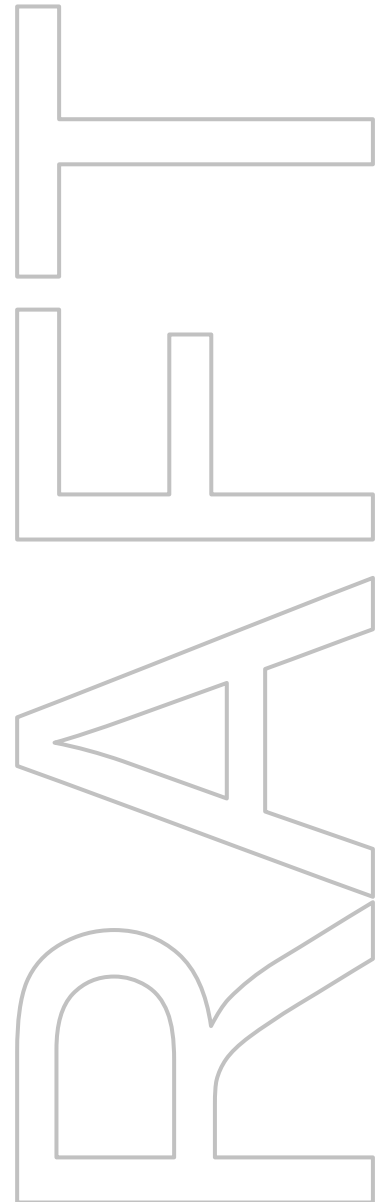
ADDITIONS AND DELETIONS:
The author of this document has added information needed for its completion. The author may also have revised the text of the original AIA standard form. An *Additions and Deletions Report* that notes added information as well as revisions to the standard form text is available from the author and should be reviewed.

This document has important legal consequences. Consultation with an attorney is encouraged with respect to its completion or modification.

ELECTRONIC COPYING of any portion of this AIA® Document to another electronic file is prohibited and constitutes a violation of copyright laws as set forth in the footer of this document.

TABLE OF ARTICLES

- 1 THE WORK OF THIS CONTRACT
- 2 DATE OF COMMENCEMENT AND SUBSTANTIAL COMPLETION
- 3 CONTRACT SUM
- 4 PAYMENT
- 5 DISPUTE RESOLUTION
- 6 ENUMERATION OF CONTRACT DOCUMENTS
- 7 GENERAL PROVISIONS
- 8 OWNER
- 9 CONTRACTOR
- 10 ARCHITECT
- 11 SUBCONTRACTORS
- 12 CONSTRUCTION BY OWNER OR BY SEPARATE CONTRACTORS
- 13 CHANGES IN THE WORK
- 14 TIME
- 15 PAYMENTS AND COMPLETION
- 16 PROTECTION OF PERSONS AND PROPERTY
- 17 INSURANCE & BONDS
- 18 CORRECTION OF WORK
- 19 MISCELLANEOUS PROVISIONS
- 20 TERMINATION OF THE CONTRACT
- 21 CLAIMS AND DISPUTES



ARTICLE 1 THE WORK OF THIS CONTRACT

The Contractor shall execute the Work described in the Contract Documents, except as specifically indicated in the Contract Documents to be the responsibility of others.

[Insert the following after the words "Contract Documents" in the first line: "listed in Article 6 of this Agreement or reasonably inferable by the Contractor from the Contract Documents as necessary to produce the results intended by the Contract Documents"](#)

ARTICLE 2 DATE OF COMMENCEMENT AND SUBSTANTIAL COMPLETION

§ 2.1 The date of commencement of the Work shall be the date of this Agreement unless a different date is stated below or provision is made for the date to be fixed in a notice to proceed issued by the Owner.

(Insert the date of commencement, if it differs from the date of this Agreement or, if applicable, state that the date will be fixed in a notice to proceed.)

<< >>

Add the following: "The commencement date will be fixed in a notice to proceed."

§ 2.2 The Contract Time shall be measured from the date of commencement.

§ 2.3 The Contractor shall achieve Substantial Completion of the entire Work not later than << >> (<< >>) days from the date of commencement, or as follows:

(Insert number of calendar days. Alternatively, a calendar date may be used when coordinated with the date of commencement. If appropriate, insert requirements for earlier Substantial Completion of certain portions of the Work.)

<< >>

Portion of Work

Substantial Completion Date

, subject to adjustments of this Contract Time as provided in the Contract Documents.

(Insert provisions, if any, for liquidated damages relating to failure to achieve Substantial Completion on time or for bonus payments for early completion of the Work.)

<< >>

Delete the following: "the date of commencement, or as follows:"

Add the following: "the date fixed in a notice to proceed issued by the Owner."

Add the following new paragraphs:

2.3.1 All times stated in the Contract Documents, including, without limitation, those for the commencement, prosecution, interim milestones, and completion of the Work, and for the delivery and installation of materials and equipment, are of the essence in this Agreement.

2.3.2 The date of substantial completion of the Work or a designated portion thereof is the date, certified by the Architect, when construction is sufficiently complete in accordance with the Contract Documents that the Owner may, if it so elects, occupy and use the Work or designated portion thereof for the purposes for which it was intended.

2.3.3 If the Contractor fails to achieve Substantial Completion of the Work within the Contract Time and as otherwise required by the Contract Documents, the Owner shall be entitled to retain or recover from the Contractor, as liquidated damages and not as a penalty, the following daily amounts commencing upon the first day following expiration of the Contract Time and continuing until the Date of Substantial Completion. Such liquidated damages are hereby agreed to be a reasonable pre-estimate of damages the Owner will incur as a result of delayed completion of the Work:

2.3.4 The Owner may deduct liquidated damages as described in the above paragraph from any unpaid amounts then or thereafter due the Contractor under this Agreement. Any liquidated damages not so deducted from any unpaid amounts due the Contractor shall be payable to the Owner at the demand of the Owner, together with interest from the date of the demand at a rate equal to the lower of the Treasury bill rate or the highest lawful rate of interest payable by the Contractor.

ARTICLE 3 CONTRACT SUM

§ 3.1 The Owner shall pay the Contractor the Contract Sum in current funds for the Contractor's performance of the Contract. The Contract Sum shall be one of the following:
(Check the appropriate box.)

Stipulated Sum, in accordance with Section 3.2 below

Cost of the Work plus the Contractor's Fee, in accordance with Section 3.3 below

Cost of the Work plus the Contractor's Fee with a Guaranteed Maximum Price, in accordance with Section 3.4 below

(Based on the selection above, complete Section 3.2, 3.3 or 3.4 below.)

Add the word "proper" prior to the word "performance" in the first sentence; and insert at the end of the first sentence "and the completion of the Work".

§ 3.2 The Stipulated Sum shall be (\$), subject to additions and deductions as provided in the Contract Documents.

§ 3.2.1 The Stipulated Sum is based upon the following alternates, if any, which are described in the Contract Documents and are hereby accepted by the Owner:

(State the numbers or other identification of accepted alternates. If the bidding or proposal documents permit the Owner to accept other alternates subsequent to the execution of this Agreement, attach a schedule of such other alternates showing the amount for each and the date when that amount expires.)

§ 3.2.2 Unit prices, if any:

(Identify and state the unit price, and state the quantity limitations, if any, to which the unit price will be applicable.)

Item	Units and Limitations	Price Per Unit (\$0.00)
<input type="text"/>	<input type="text"/>	<input type="text"/>

§ 3.2.3 Allowances included in the stipulated sum, if any:

(Identify allowance and state exclusions, if any, from the allowance price.)

Item	Allowance
<input type="text"/>	<input type="text"/>

§ 3.3 COST OF THE WORK PLUS CONTRACTOR'S FEE

§ 3.3.1 The Cost of the Work is as defined in Exhibit A, Determination of the Cost of the Work.

§ 3.3.2 The Contractor's Fee:

(State a lump sum, percentage of Cost of the Work or other provision for determining the Contractor's Fee and the method of adjustment to the Fee for changes in the Work.)

§ 3.4 COST OF THE WORK PLUS CONTRACTOR'S FEE WITH A GUARANTEED MAXIMUM PRICE

§ 3.4.1 The Cost of the Work is as defined in Exhibit A, Determination of the Cost of the Work.

§ 3.4.2 The Contractor's Fee:

(State a lump sum, percentage of Cost of the Work or other provision for determining the Contractor's Fee and the method of adjustment to the Fee for changes in the Work.)

§ 3.4.3 GUARANTEED MAXIMUM PRICE

§ 3.4.3.1 The sum of the Cost of the Work and the Contractor's Fee is guaranteed by the Contractor not to exceed (\$), subject to additions and deductions by changes in the Work as provided in the Contract Documents. Such maximum sum is referred to in the Contract Documents as the Guaranteed Maximum Price. Costs which would cause the Guaranteed Maximum Price to be exceeded shall be paid by the Contractor without reimbursement by the Owner.

(Insert specific provisions if the Contractor is to participate in any savings.)

§ 3.4.3.2 The Guaranteed Maximum Price is based on the following alternates, if any, which are described in the Contract Documents and are hereby accepted by the Owner:

§ 3.4.3.3 Unit Prices, if any:

(Identify and state the unit price, and state the quantity limitations, if any, to which the unit price will be applicable.)

Item	Units and Limitations	Price Per Unit (\$0.00)
<u> </u>	<u> </u>	<u> </u>

§ 3.4.3.4 Allowances included in the Guaranteed Maximum Price, if any:

(Identify and state the amounts of any allowances, and state whether they include labor, materials, or both.)

Item	Allowance
<u> </u>	<u> </u>

§ 3.4.3.5 Assumptions, if any, on which the Guaranteed Maximum Price is based:

ARTICLE 4 PAYMENTS

§ 4.1 PROGRESS PAYMENTS

§ 4.1.1 Based upon Applications for Payment submitted to the Architect by the Contractor and Certificates for Payment issued by the Architect, the Owner shall make progress payments on account of the Contract Sum to the Contractor as provided below and elsewhere in the Contract Documents.

§ 4.1.2 The period covered by each Application for Payment shall be one calendar month ending on the last day of the month, or as follows:

Delete the words "or as follows" from the last line and replace with "and the payment shall be less the specified retainage".

§ 4.1.3 Provided that an Application for Payment is received by the Architect not later than the day of a month, the Owner shall make payment of the certified amount to the Contractor not later than the day of the month. If an Application for Payment is received by the Architect after the date fixed above, payment shall be made by the Owner not later than () days after the Architect receives the Application for Payment.

(Federal, state or local laws may require payment within a certain period of time.)

Delete existing Paragraph 4.1.3 and replace with the following: "Provided that an Application for Payments is received by the Architect not later than the twenty-fifth (25th) day of a month, the Owner shall make payment to the Contractor not later than the third Friday of the next month. If an Application for Payment is received by the Architect after the date fixed above, payment shall be made by the Owner not later than thirty (30) days after the Architect received the Application for Payment."

Add the following new clauses to Subparagraph 4.1.3:

4.1.3.1 Notwithstanding anything to the contrary in this Contract, payment of amounts due a Contractor from an Owner, except retainage, shall be made within 30 days after the Owner receives a timely, properly completed, undisputed request for payment according to terms of the contract, unless extenuating circumstances exist which would preclude approval of payment within 30 days. If such extenuating circumstances exist, than payment shall be made within 45 days after the Owner receives such payment request.

4.1.3.2 If the Owner fails to pay Contractor within the time period set in Paragraph 4.1.3.1, the Owner shall pay interest computed at the rate of eighteen percent (18%) per annum on the undisputed amount to the Contractor beginning on the day following the end of the time period set forth in Paragraph 4.1.2.1.

§ 4.1.4 Retainage, if any, shall be withheld as follows:

[«](#) [»](#)

§ 4.1.5 Payments due and unpaid under the Contract shall bear interest from the date payment is due at the rate stated below, or in the absence thereof, at the legal rate prevailing from time to time at the place where the Project is located.

(Insert rate of interest agreed upon, if any.)

[«](#) [»](#) % [«](#) [»](#)

§ 4.2 FINAL PAYMENT

§ 4.2.1 Final payment, constituting the entire unpaid balance of the Contract Sum, shall be made by the Owner to the Contractor when

- .1 the Contractor has fully performed the Contract except for the Contractor's responsibility to correct Work as provided in Section 18.2, and to satisfy other requirements, if any, which extend beyond final payment;
- .2 the contractor has submitted a final accounting for the Cost of the Work, where payment is on the basis of the Cost of the Work with or without a guaranteed maximum price; and
- .3 a final Certificate for Payment has been issued by the Architect.

§ 4.2.2 The Owner's final payment to the Contractor shall be made no later than 30 days after the issuance of the Architect's final Certificate for Payment, or as follows:

[«](#) [»](#)

ARTICLE 5 DISPUTE RESOLUTION

§ 5.1 BINDING DISPUTE RESOLUTION

For any claim subject to, but not resolved by, mediation pursuant to Section 21.3, the method of binding dispute resolution shall be as follows:

(Check the appropriate box. If the Owner and Contractor do not select a method of binding dispute resolution below, or do not subsequently agree in writing to a binding dispute resolution method other than litigation, claims will be resolved in a court of competent jurisdiction.)

[«](#) [»](#) Arbitration pursuant to Section 21.4 of this Agreement

[«](#) [»](#) Litigation in a court of competent jurisdiction

[«](#) [»](#) Other *(Specify)*

[«](#) [»](#)

[Delete Article 5 in its entirety.](#)

ARTICLE 6 ENUMERATION OF CONTRACT DOCUMENTS

§ 6.1 The Contract Documents are defined in Article 7 and, except for Modifications issued after execution of this Agreement, are enumerated in the sections below.

§ 6.1.1 The Agreement is this executed AIA Document A107–2007, Standard Form of Agreement Between Owner and Contractor for a Project of Limited Scope.

§ 6.1.2 The Supplementary and other Conditions of the Contract:

Document	Title	Date	Pages

Delete the existing Paragraph 6.1.2 and replace with the following: "The Supplementary and other Conditions of the Contract are those modified and contained in the Project Manual dated" September 24, 2012.

§ 6.1.3 The Specifications:
(Either list the Specifications here or refer to an exhibit attached to this Agreement.)

[« »](#)

Section	Title	Date	Pages

Include at the end of the paragraph: "Sections as listed in the Table of Contents of the Project Manual as dated as in Section 6.1.2."

§ 6.1.4 The Drawings:
(Either list the Drawings here or refer to an exhibit attached to this Agreement.)

«Cover, D1, D2, A1, A2, A3, A4, A5, A6, A7, A8, S22.1, M22.1, M22.2 and E22.1. »

Number	Title	Date
<u>RFB: #15-0090</u>	<u>Adult Detention Facility Public Restroom in Main Lobby</u>	<u>August 24, 2015</u>

§ 6.1.5 The Addenda, if any:

Number	Date	Pages

Portions of Addenda relating to bidding requirements are not part of the Contract Documents unless the bidding requirements are enumerated in this Article 6.

§ 6.1.6 Additional documents, if any, forming part of the Contract Documents:

- .1 Exhibit A, Determination of the Cost of the Work, if applicable.
- .2 AIA Document E201™–2007, Digital Data Protocol Exhibit, if completed, or the following:

[« »](#)

- .3 Other documents:
(List here any additional documents that are intended to form part of the Contract Documents.)

[« »](#)

Include at the end of the paragraph: "Request for Bids, Invitation for Bids, Instructions to Bidders, Bid Form".

ARTICLE 7 GENERAL PROVISIONS

§ 7.1 THE CONTRACT DOCUMENTS

The Contract Documents are enumerated in Article 6 and consist of this Agreement (including, if applicable, Supplementary and other Conditions of the Contract), Drawings, Specifications, Addenda issued prior to the execution of this Agreement, other documents listed in this Agreement and Modifications issued after execution of this Agreement. A Modification is (1) a written amendment to the Contract signed by both parties, (2) a Change Order, (3) a Construction Change Directive or (4) a written order for a minor change in the Work issued by the Architect. The intent of the Contract Documents is to include all items necessary for the proper execution and completion of the Work by the Contractor. The Contract Documents are complementary, and what is required by one shall be as binding as if required by all; performance by the Contractor shall be required to the extent consistent with the Contract Documents and reasonably inferable from them as being necessary to produce the indicated results.

Add the following at the end of Paragraph 7.1: "In the event of inconsistencies within or between parts of the Contracts Documents, or between the Contract Documents and applicable standards, codes, resolutions, and ordinances, the Contract shall (i) provide the better quality or greater quantity of Work or (ii) comply with the more stringent requirement, either or both in accordance with the Architect's interpretation. The terms and conditions of this Paragraph 7.1, however, shall not relieve the Contractor of any obligations set forth in Paragraphs 9.1 and 9.6."

§ 7.2 THE CONTRACT

The Contract Documents form the Contract for Construction. The Contract represents the entire and integrated agreement between the parties hereto and supersedes prior negotiations, representations or agreements, either written or oral. The Contract may be amended or modified only by a Modification. The Contract Documents shall not be construed to create a contractual relationship of any kind between any persons or entities other than the Owner and the Contractor.

§ 7.3 THE WORK

The term "Work" means the construction and services required by the Contract Documents, whether completed or partially completed, and includes all other labor, materials, equipment and services provided or to be provided by the Contractor to fulfill the Contractor's obligations. The Work may constitute the whole or a part of the Project.

§ 7.4 INSTRUMENTS OF SERVICE

Instruments of Service are representations, in any medium of expression now known or later developed, of the tangible and intangible creative work performed by the Architect and the Architect's consultants under their respective professional services agreements. Instruments of Service may include, without limitation, studies, surveys, models, sketches, drawings, specifications, and other similar materials.

§ 7.5 OWNERSHIP AND USE OF DRAWINGS, SPECIFICATIONS AND OTHER INSTRUMENTS OF SERVICE

§ 7.5.1 The Architect and the Architect's consultants shall be deemed the authors and owners of their respective Instruments of Service, including the Drawings and Specifications, and will retain all common law, statutory and other reserved rights, including copyrights. The Contractor, Subcontractors, Sub-subcontractors, and material or equipment suppliers shall not own or claim a copyright in the Instruments of Service. Submittal or distribution to meet official regulatory requirements or for other purposes in connection with this Project is not to be construed as publication in derogation of the Architect's or Architect's consultants' reserved rights.

§ 7.5.2 The Contractor, Subcontractors, Sub-subcontractors and material or equipment suppliers are authorized to use and reproduce the Instruments of Service provided to them solely and exclusively for execution of the Work. All copies made under this authorization shall bear the copyright notice, if any, shown on the Instruments of Service. The Contractor, Subcontractors, Sub-subcontractors, and material or equipment suppliers may not use the Instruments of Service on other projects or for additions to this Project outside the scope of the Work without the specific written consent of the Owner, Architect and the Architect's consultants.

§ 7.6 TRANSMISSION OF DATA IN DIGITAL FORM

If the parties intend to transmit Instruments of Service or any other information or documentation in digital form, they shall endeavor to establish necessary protocols governing such transmission, unless otherwise provided in the Agreement or in the Contract Documents.

ARTICLE 8 OWNER

§ 8.1 INFORMATION AND SERVICES REQUIRED OF THE OWNER

§ 8.1.1 The Owner shall furnish all necessary surveys and a legal description of the site.

§ 8.1.2 The Contractor shall be entitled to rely on the accuracy of information furnished by the Owner but shall exercise proper precautions relating to the safe performance of the Work.

§ 8.1.3 Except for permits and fees that are the responsibility of the Contractor under the Contract Documents, including those required under Section 9.6.1, the Owner shall secure and pay for other necessary approvals, easements, assessments and charges required for the construction, use or occupancy of permanent structures or for permanent changes in existing facilities.

[Add new Paragraph 8.4](#)

[§8.4 EXTENT OF OWNER RIGHTS](#)

[§8.4.1 The rights stated in this Article 8 and elsewhere in the Contract Documents are cumulative and not in limitation of any rights of the Owner \(i\) granted in the Contract Documents, \(ii\) in law, or \(iii\) in equity.](#)

[§8.4.2 In no event shall Owner have control over, charge of, or any responsibility for construction means, methods, techniques, sequences, or procedures or for the safety precautions and programs in connection with the Work, notwithstanding any of the rights and authority granted the Owner in the Contract Document."](#)

§ 8.2 OWNER'S RIGHT TO STOP THE WORK

If the Contractor fails to correct Work which is not in accordance with the requirements of the Contract Documents, or repeatedly fails to carry out the Work in accordance with the Contract Documents, the Owner may issue a written order to the Contractor to stop the Work, or any portion thereof, until the cause for such order is eliminated; however, the right of the Owner to stop the Work shall not give rise to a duty on the part of the Owner to exercise this right for the benefit of the Contractor or any other person or entity.

§ 8.3 OWNER'S RIGHT TO CARRY OUT THE WORK

If the Contractor defaults or neglects to carry out the Work in accordance with the Contract Documents, and fails within a ten-day period after receipt of written notice from the Owner to commence and continue correction of such default or neglect with diligence and promptness, the Owner, without prejudice to any other remedy the Owner may have, may correct such deficiencies and may deduct the reasonable cost thereof, including Owner's expenses and compensation for the Architect's services made necessary thereby, from the payment then or thereafter due the Contractor.

ARTICLE 9 CONTRACTOR

§ 9.1 REVIEW OF CONTRACT DOCUMENTS AND FIELD CONDITIONS BY CONTRACTOR

§ 9.1.1 Execution of the Contract by the Contractor is a representation that the Contractor has visited the site, become generally familiar with local conditions under which the Work is to be performed and correlated personal observations with requirements of the Contract Documents.

[Add the following at the end of Paragraph 9.1.1.: "Prior to execution of the Agreement, the Contractor and each Subcontractor evaluated and satisfied themselves as to the conditions and limitations under which the Work is to be performed, including, without limitation, \(i\) the location, condition, layout, and nature of the Project site and surrounding areas, \(ii\) generally prevailing climactic conditions, \(iii\) anticipated labor supply and costs, \(iv\) availability and cost of materials, tools, and equipment, and \(v\) other similar issues. The Owner assumes no responsibility or liability for the physical condition or safety of the Project site or any improvements located on the Project site. Except as set forth in Paragraph 16.2, the Contractor shall be solely responsible for providing a safe place for the performance of the Work. The Owner shall not be required to make any adjustment in either the contract Sum or Contract Time in connection with any failure by the Contractor or any Subcontractor to have complied with the requirements of this Paragraph 9.1.1."](#)

§ 9.1.2 Because the Contract Documents are complementary, the Contractor shall, before starting each portion of the Work, carefully study and compare the various Contract Documents relative to that portion of the Work, as well as the information furnished by the Owner pursuant to Section 8.1.1, shall take field measurements of any existing conditions related to that portion of the Work and shall observe any conditions at the site affecting it. These obligations are for the purpose of facilitating coordination and construction by the Contractor and are not for the purpose of discovering errors, omissions, or inconsistencies in the Contract Documents; however, the Contractor shall promptly report to the Architect any errors, inconsistencies, or omissions discovered by or made known to the Contractor as a request for information in such form as the Architect may require. It is recognized that the Contractor's review is made in the Contractor's capacity as a contractor and not as a licensed design professional unless otherwise specifically provided in the Contract Documents.

[Add the following new clauses to Subparagraph 9.1.2:](#)

[§9.1.2.1 The exactness of grades, elevations, dimensions, or locations given on any Drawings issued by the Architect, or the work installed by other contractors, is not guaranteed by the Architect or the owner.](#)

[§9.1.2.2 The Contractor shall, therefore, satisfy itself to the accuracy of all grades, elevations, dimensions, and locations. In all cases of interconnection of its Work with existing or other work, it shall verify at the site all dimensions relating to such existing or other work. Any errors due to the Contractor's failure to so verify all such grades, elevations, dimensions, or locations shall be promptly rectified by the Contractor without any additional cost to the Owner.](#)

§ 9.1.3 The Contractor is not required to ascertain that the Contract Documents are in accordance with applicable laws, statutes, ordinances, codes, rules and regulations, or lawful orders of public authorities, but the Contractor shall promptly report to the Architect any nonconformity discovered by or made known to the Contractor as a request for information in such form as the Architect may require.

§ 9.2 SUPERVISION AND CONSTRUCTION PROCEDURES

§ 9.2.1 The Contractor shall supervise and direct the Work, using the Contractor's best skill and attention. The Contractor shall be solely responsible for and have control over construction means, methods, techniques, sequences and procedures, and for coordinating all portions of the Work under the Contract, unless the Contract Documents give other specific instructions concerning these matters.

§ 9.2.2 The Contractor shall be responsible to the Owner for acts and omissions of the Contractor's employees, Subcontractors and their agents and employees, and other persons or entities performing portions of the Work for or on behalf of the Contractor or any of its Subcontractors.

§ 9.3 LABOR AND MATERIALS

§ 9.3.1 Unless otherwise provided in the Contract Documents, the Contractor shall provide and pay for labor, materials, equipment, tools, construction equipment and machinery, water, heat, utilities, transportation, and other facilities and services necessary for proper execution and completion of the Work whether temporary or permanent and whether or not incorporated or to be incorporated in the Work.

§ 9.3.2 The Contractor shall enforce strict discipline and good order among the Contractor's employees and other persons carrying out the Work. The Contractor shall not permit employment of unfit persons or persons not skilled in tasks assigned to them.

§ 9.3.3 The Contractor may make a substitution only with the consent of the Owner, after evaluation by the Architect and in accordance with a Modification.

[Add new Paragraph 9.3.4](#)

[§9.3.4 The Contractor shall deliver, handle, store and install materials in accordance with manufacturers' instructions.](#)

§ 9.4 WARRANTY

The Contractor warrants to the Owner and Architect that materials and equipment furnished under the Contract will be of good quality and new unless the Contract Documents require or permit otherwise. The Contractor further warrants that the Work will conform to the requirements of the Contract Documents and will be free from defects, except for those inherent in the quality of the Work the Contract Documents require or permit. Work, materials, or equipment not conforming to these requirements may be considered defective. The Contractor's warranty excludes remedy for damage or defect caused by abuse, alterations to the Work not executed by the Contractor, improper or insufficient maintenance, improper operation or normal wear and tear under normal usage.

Replace the word "may" with the word "shall" in the fifth line of Paragraph 9.4.

Insert the following at the end of Paragraph 9.4: "The Contractor agrees to assign to the Owner at the time of final completion of the Work any and all manufacturer's warranties relating to materials and labor used in the Work and further agrees to perform the Work in such a manner so as to preserve any and all such manufacturer's warranties."

§ 9.5 TAXES

The Contractor shall pay sales, consumer, use and other similar taxes that are legally enacted when bids are received or negotiations concluded, whether or not yet effective or merely scheduled to go into effect.

Add new Paragraph 9.5.1 MATERIALS:

§9.5.1 Materials and equipment incorporated into this Project are exempt from the payment of sales tax under the laws of the State of Kansas.

§9.5.2 The owner will provide the contractor with a proper exemption certificate number when the notice to proceed is issued. Should the Owner fail to provide an exemption certification the Contractor shall notify the Architect in writing prior to placing any orders. The contractor shall be reimbursed for sales tax amounts for which he becomes liable until such exemption is provided.

§9.5.3 Upon issuance of a proper exemption certification number to the Contractor, the Contractor shall assume full responsibility for his own assessed penalties relating to the Contractor's improper use of the exemption certificate. Contractor shall comply with statutes of the State of Kansas related to sales tax exemption.

§9.5.4 The Contractor shall be responsible for furnishing the Owner a copy of all invoices bearing the exemption certification number pertaining to materials that are incorporated in this project.

§9.5.5 Contractor shall retain, for a period of not less than five years, all his and his subcontractor's invoices claiming sales tax exemption, properly identified with tax exemption number as required by State of Kansas.

§9.5.6 Upon completion of the Project, the Contractor shall execute and issue, to the Owner, a certificate of compliance on the form provided by the State Department of Revenue.

§ 9.6 PERMITS, FEES, NOTICES, AND COMPLIANCE WITH LAWS

§9.6.1 Unless otherwise provided in the Contract Documents, the Contractor shall secure and pay for the building permit as well as other permits, fees, licenses and inspections by government agencies necessary for proper execution and completion of the Work that are customarily secured after execution of the Contract and legally required at the time bids are received or negotiations concluded.

§9.6.2 The Contractor shall comply with and give notices required by applicable laws, statutes, ordinances, codes, rules and regulations, and lawful orders of public authorities applicable to performance of the Work. If the Contractor performs Work knowing it to be contrary to applicable laws, statutes, ordinances, codes, rules and regulations, or lawful orders of public authorities, the Contractor shall assume appropriate responsibility for such Work and shall bear the costs attributable to correction.

Delete the existing Paragraph 9.6.2 and replace with the following: "The Contractor shall comply with and give notices required by applicable laws, statutes, ordinances, codes, rules, regulations and lawful orders of public authorities applicable to performance of the Work. The Contractor shall promptly notify the Architect and Owner if

the Drawings and Specifications are observed by the Contractor to be at variance therewith. If the Contractor performs Work knowing it to be contrary to applicable laws, statutes, ordinances, codes, rules and regulations, or lawful orders of public authorities, without such notice to the Architect and Owner, the Contractor shall assume appropriate responsibility for such Work and shall bear the costs attributable to correction.

§ 9.7 ALLOWANCES

The Contractor shall include in the Contract Sum all allowances stated in the Contract Documents. The Owner shall select materials and equipment under allowances with reasonable promptness. Allowance amounts shall include the costs to the Contractor of materials and equipment delivered at the site and all required taxes, less applicable trade discounts. Allowance amounts shall not include the Contractor's costs for unloading and handling at the site, labor, installation, overhead, and profit.

§ 9.8 CONTRACTOR'S CONSTRUCTION SCHEDULES

§ 9.8.1 The Contractor, promptly after being awarded the Contract, shall prepare and submit for the Owner's and Architect's information a Contractor's construction schedule for the Work. The schedule shall not exceed time limits current under the Contract Documents, shall be revised at appropriate intervals as required by the conditions of the Work and Project, shall be related to the entire Project to the extent required by the Contract Documents, and shall provide for expeditious and practicable execution of the Work.

§ 9.8.2 The Contractor shall perform the Work in general accordance with the most recent schedule submitted to the Owner and Architect.

§ 9.9 SUBMITTALS

§ 9.9.1 The Contractor shall review for compliance with the Contract Documents and submit to the Architect Shop Drawings, Product Data, Samples and similar submittals required by the Contract Documents in coordination with the Contractor's construction schedule and in such sequence as to allow the Architect reasonable time for review. By submitting Shop Drawings, Product Data, Samples and similar submittals, the Contractor represents to the Owner and Architect that the Contractor has (1) reviewed and approved them; (2) determined and verified materials, field measurements and field construction criteria related thereto, or will do so; and (3) checked and coordinated the information contained within such submittals with the requirements of the Work and of the Contract Documents. The Work shall be in accordance with approved submittals.

§ 9.9.2 Shop Drawings, Product Data, Samples and similar submittals are not Contract Documents.

§ 9.10 USE OF SITE

The Contractor shall confine operations at the site to areas permitted by applicable laws, statutes, ordinances, codes, rules and regulations, lawful orders of public authorities, and the Contract Documents and shall not unreasonably encumber the site with materials or equipment.

Add the following new Subparagraphs:

§9.10.1 Only materials and equipment that are to be used directly in the Work shall be brought to and stored on the Project site by the Contractor. After equipment is no longer required for the Work, it shall be promptly removed from the Project site. Protection of construction materials and equipment stored at the Project site from weather, theft, damage, and all other adversity is solely the responsibility of the Contractor. The Contractor shall ensure that the Work, at all times, is performed in a manner that affords reasonable access, both vehicular and pedestrian, to the site of the Work and all adjacent areas. The Work shall be performed, to the fullest extent reasonably possible, in such a manner that public areas adjacent to the site of the Work shall be free from all debris, building materials, and equipment likely to cause hazardous conditions.

§9.10.2 The Contractor and any such entity for whom the Contractor is responsible shall not erect any sign on the Project site without the prior written consent of the Owner, which may be withheld in the sole discretion of the Owner.

§9.10.3 Without limitation of any other provision of the Contract Documents, contractor shall use best efforts to minimize any interference with the occupancy or beneficial use of (i) any areas and building adjacent to the site of the Work, and (ii) the Building, in the event of partial occupancy. Without prior approval of the Owner, the

Contractor shall not permit any workers to use any existing facilities at the Project site, including, without limitation, lavatories, toilets, entrances, and parking areas other than those designated by the Owner.

§9.10.3.1 Without limitation of any other provision of the Contract Documents, the Contractor shall use its best efforts to comply with all resolutions, rules and regulations promulgated by the Owner in connection with the use and occupancy of the Project site and the Building, as amended for time to time. The Contractor shall immediately notify the Owner in writing if during the performance of the Work, the Contractor finds compliance with any portion of such resolutions, rules and regulations to be impracticable, setting forth the problems of such compliance and suggesting alternatives through which the same result intended by such portions of the resolutions, rules and regulations can be achieved. The Owner may, in the Owner's sole discretion, adopt such suggestions, develop new alternatives, or require compliance with the existing requirements of the resolutions, rules and regulations. In the even Owner requires compliance with subsequently adopted resolutions, rules and regulations, any resulting change in the Work shall be adjusted as provided in Article 13 of the Contract.

§9.10.4 The Contractor shall comply with all insurance requirements and collective bargaining agreements applicable to use and occupancy of the Project site and the Building.

§ 9.11 CUTTING AND PATCHING

The Contractor shall be responsible for cutting, fitting or patching required to complete the Work or to make its parts fit together properly.

§ 9.12 CLEANING UP

The Contractor shall keep the premises and surrounding area free from accumulation of waste materials or rubbish caused by operations under the Contract. At completion of the Work, the Contractor shall remove waste materials, rubbish, the Contractor's tools, construction equipment, machinery and surplus material from and about the Project.

§ 9.13 ROYALTIES, PATENTS AND COPYRIGHTS

The Contractor shall pay all royalties and license fees. The Contractor shall defend suits or claims for infringement of copyrights and patent rights and shall hold the Owner and Architect harmless from loss on account thereof, but shall not be responsible for such defense or loss when a particular design, process or product of a particular manufacturer or manufacturers is required by the Contract Documents or where the copyright violations are contained in Drawings, Specifications or other documents prepared by the Owner or Architect. However, if the Contractor has reason to believe that the required design, process or product is an infringement of a copyright or a patent, the Contractor shall be responsible for such loss unless such information is promptly furnished to the Architect.

§ 9.14 ACCESS TO WORK

The Contractor shall provide the Owner and Architect access to the Work in preparation and progress wherever located.

§ 9.15 INDEMNIFICATION

§ 9.15.1 To the fullest extent permitted by law, the Contractor shall indemnify and hold harmless the Owner, Architect, Architect's consultants and agents and employees of any of them from and against claims, damages, losses and expenses, including but not limited to attorneys' fees, arising out of or resulting from performance of the Work, provided that such claim, damage, loss or expense is attributable to bodily injury, sickness, disease or death, or to injury to or destruction of tangible property (other than the Work itself), but only to the extent caused by the negligent acts or omissions of the Contractor, a Subcontractor, anyone directly or indirectly employed by them or anyone for whose acts they may be liable, regardless of whether or not such claim, damage, loss or expense is caused in part by a party indemnified hereunder. Such obligation shall not be construed to negate, abridge, or reduce other rights or obligations of indemnity which would otherwise exist as to a party or person described in this Section 9.15.1.

Insert the following after parenthetical "(other than the Work itself)," in the fifth line of Subparagraph 9.15.1: "(including loss of use resulting therefrom)".

§ 9.15.2 In claims against any person or entity indemnified under this Section 9.15 by an employee of the Contractor, a Subcontractor, anyone directly or indirectly employed by them or anyone for whose acts they may be liable, the

indemnification obligation under Section 9.15.1 shall not be limited by a limitation on amount or type of damages, compensation or benefits payable by or for the Contractor or Subcontractor under workers' compensation acts, disability benefit acts or other employee benefit acts.

Add the following new subparagraphs at the end of Paragraph 9.15:

§9.15.3 The Contractor's indemnity obligations under this Paragraph 9.15 shall also specifically include, without limitation, all fines, penalties, damages, liability, costs, and expenses (including, without limitation, reasonable attorney's fees) arising out of, or in connection with, any (i) violation of or failure to comply with any law, statute, resolution, ordinance, rule, regulation, code, or requirement of a public authority that bears upon the performance of the Work by the Contractor, a Subcontractor, or any person or entity for whom either is responsible, (ii) means, methods, procedures, techniques, or sequences of execution or performance of the Work, and (iii) failure to secure and pay for permits, fees, approvals, licenses, and inspections, as required under the Contract Documents, or any violation of any permit of other approval of a public authority applicable to the Work by the Contractor, a Subcontractor, or any person or entity for whom either is responsible.

§9.15.4 The Contractor shall indemnify and hold harmless all of the Indemnitees from and against any costs and expenses (including reasonable attorneys' fees) incurred by any of the Indemnitees in enforcing any of the Contractor's defense, indemnity, and hold harmless obligations under this Contract.

ARTICLE 10 ARCHITECT

§ 10.1 The Architect will provide administration of the Contract and will be an Owner's representative during construction, until the date the Architect issues the final Certificate for Payment. The Architect will have authority to act on behalf of the Owner only to the extent provided in the Contract Documents, unless otherwise modified in writing in accordance with other provisions of the Contract.

§ 10.2 The Architect will visit the site at intervals appropriate to the stage of the construction to become generally familiar with the progress and quality of the portion of the Work completed, and to determine in general, if the Work observed is being performed in a manner indicating that the Work, when fully completed, will be in accordance with the Contract Documents. However, the Architect will not be required to make exhaustive or continuous on-site inspections to check the quality or quantity of the Work. The Architect will not have control over, charge of, or responsibility for, the construction means, methods, techniques, sequences or procedures, or for safety precautions and programs in connection with the Work, since these are solely the Contractor's rights and responsibilities under the Contract Documents.

§ 10.3 On the basis of the site visits, the Architect will keep the Owner reasonably informed about the progress and quality of the portion of the Work completed, and report to the Owner (1) known deviations from the Contract Documents and from the most recent construction schedule submitted by the Contractor, and (2) defects and deficiencies observed in the Work. The Architect will not be responsible for the Contractor's failure to perform the Work in accordance with the requirements of the Contract Documents. The Architect will not have control over or charge of and will not be responsible for acts or omissions of the Contractor, Subcontractors, or their agents or employees, or any other persons or entities performing portions of the Work.

§ 10.4 Based on the Architect's evaluations of the Work and of the Contractor's Applications for Payment, the Architect will review and certify the amounts due the Contractor and will issue Certificates for Payment in such amounts.

§ 10.5 The Architect has authority to reject Work that does not conform to the Contract Documents and to require inspection or testing of the Work.

§ 10.6 The Architect will review and approve or take other appropriate action upon the Contractor's submittals such as Shop Drawings, Product Data and Samples, but only for the limited purpose of checking for conformance with information given and the design concept expressed in the Contract Documents.

§ 10.7 The Architect will interpret and decide matters concerning performance under, and requirements of, the Contract Documents on written request of either the Owner or Contractor. The Architect will make initial decisions

on all claims, disputes and other matters in question between the Owner and Contractor but will not be liable for results of any interpretations or decisions rendered in good faith.

§ 10.8 The Architect's decisions on matters relating to aesthetic effect will be final if consistent with the intent expressed in the Contract Documents.

Add the following after the word "effect" in the first line of Subparagraph 10.8: ", in connection with administration of the Contract."

§ 10.9 Duties, responsibilities and limitations of authority of the Architect as set forth in the Contract Documents shall not be restricted, modified or extended without written consent of the Owner, Contractor and Architect. Consent shall not be unreasonably withheld.

ARTICLE 11 SUBCONTRACTORS

§ 11.1 A Subcontractor is a person or entity who has a direct contract with the Contractor to perform a portion of the Work at the site.

§ 11.2 Unless otherwise stated in the Contract Documents or the bidding requirements, the Contractor, as soon as practicable after award of the Contract, shall furnish in writing to the Owner through the Architect the names of the Subcontractors or suppliers for each of the principal portions of the Work. The Contractor shall not contract with any Subcontractor or supplier to whom the Owner or Architect has made reasonable written objection within ten days after receipt of the Contractor's list of Subcontractors and suppliers. If the proposed but rejected Subcontractor was reasonably capable of performing the Work, the Contract Sum and Contract Time shall be increased or decreased by the difference, if any, occasioned by such change, and an appropriate Change Order shall be issued before commencement of the substitute Subcontractor's Work. The Contractor shall not be required to contract with anyone to whom the Contractor has made reasonable objection.

§ 11.3 Contracts between the Contractor and Subcontractors shall (1) require each Subcontractor, to the extent of the Work to be performed by the Subcontractor, to be bound to the Contractor by the terms of the Contract Documents, and to assume toward the Contractor all the obligations and responsibilities, including the responsibility for safety of the Subcontractor's Work, which the Contractor, by the Contract Documents, assumes toward the Owner and Architect, and (2) allow the Subcontractor the benefit of all rights, remedies and redress against the Contractor that the Contractor, by these Contract Documents, has against the Owner.

ARTICLE 12 CONSTRUCTION BY OWNER OR BY SEPARATE CONTRACTORS

§ 12.1 The Owner reserves the right to perform construction or operations related to the Project with the Owner's own forces, and to award separate contracts in connection with other portions of the Project or other construction or operations on the site under conditions of the contract identical or substantially similar to these, including those portions related to insurance and waiver of subrogation. If the Contractor claims that delay or additional cost is involved because of such action by the Owner, the Contractor shall make such claim as provided in Article 21.

§ 12.2 The Contractor shall afford the Owner and separate contractors reasonable opportunity for introduction and storage of their materials and equipment and performance of their activities, and shall connect and coordinate the Contractor's activities with theirs as required by the Contract Documents.

§ 12.3 The Owner shall be reimbursed by the Contractor for costs incurred by the Owner which are payable to a separate contractor because of delays, improperly timed activities or defective construction of the Contractor. The Owner shall be responsible to the Contractor for costs incurred by the Contractor because of delays, improperly timed activities, damage to the Work or defective construction of a separate contractor.

Add the following new Subparagraphs:

§ 12.4 The Contractor shall, as part of the Work, provide for the coordination of work to be performed by each separate contractor engaged by the Owner, if any, with the work to be performed by the Contractor or its Subcontractors of any tier. The Contractor shall use its best efforts to cooperate with the Owner and all separate contractors, their subcontractors, and any other entity involved in the performance of the Work. In order to cause the Work and any work to be performed by separate contractors to be completed in an expeditious manner, the

Contractor agrees that it will ensure that such separate contractors have a reasonable opportunity to complete their work as and when required.

§12.5 If any part of the Work depends on the proper performance of the work of a separate contractor, the Contractor shall, prior to proceeding with the Work, promptly report to the Owner any apparent discrepancies or defects in such other work that render it unsuitable and prevent the Contractor from proceeding expeditiously with the Work.

§12.6 If the Contractor wrongfully causes damage to the Work or the property of the Owner, the contractor shall promptly remedy such damage. If the Contractor wrongfully causes damage to the work or property of any separate contractor, the Contractor shall promptly attempt to settle any resulting dispute or claim with such other contractor.

ARTICLE 13 CHANGES IN THE WORK

§ 13.1 By appropriate Modification, changes in the Work may be accomplished after execution of the Contract. The Owner, without invalidating the Contract, may order changes in the Work within the general scope of the Contract consisting of additions, deletions or other revisions, with the Contract Sum and Contract Time being adjusted accordingly. Such changes in the Work shall be authorized by written Change Order signed by the Owner, Contractor and Architect, or by written Construction Change Directive signed by the Owner and Architect.

§ 13.2 Adjustments in the Contract Sum and Contract Time resulting from a change in the Work shall be determined by mutual agreement of the parties or, in the case of a Construction Change Directive signed only by the Owner and Architect, by the Contractor's cost of labor, material, equipment, and reasonable overhead and profit, unless the parties agree on another method for determining the cost or credit. Pending final determination of the total cost of a Construction Change Directive, the Contractor may request payment for Work completed pursuant to the Construction Change Directive. The Architect will make an interim determination of the amount of payment due for purposes of certifying the Contractor's monthly Application for Payment. When the Owner and Contractor agree on adjustments to the Contract Sum and Contract Time arising from a Construction Change Directive, the Architect will prepare a Change Order.

§ 13.3 The Architect will have authority to order minor changes in the Work not involving adjustment in the Contract Sum or extension of the Contract Time and not inconsistent with the intent of the Contract Documents. Such changes shall be effected by written order and shall be binding on the Owner and Contractor. The Contractor shall carry out such written orders promptly.

§ 13.4 If concealed or unknown physical conditions are encountered at the site that differ materially from those indicated in the Contract Documents or from those conditions ordinarily found to exist, the Contract Sum and Contract Time shall be equitably adjusted as mutually agreed between the Owner and Contractor; provided that the Contractor provides notice to the Owner and Architect promptly and before conditions are disturbed.

Add the following at the end of Paragraph 13.4: "No adjustment in the Contract Time or Contract Sum shall be permitted, however, in connection with a concealed or unknown condition that does not differ materially from those conditions disclosed or that reasonably should have been disclosed by the Contractor's (i) prior inspections, tests, reviews, and preconstruction services for the Project, or (ii) inspections, tests, reviews, and preconstruction services that the Contractor had the opportunity to make or should have performed in connection with the Project."

Add the following new Subparagraphs:

§13.5 Except as permitted in Paragraph 12.1, a change in the Contract Sum or the Contract Time shall be accomplished only by a Change Order. Accordingly, no course of conduct or dealings between the parties, nor express or implied acceptance of alterations or additions to the Work, and no claim that the Owner has been unjustly enriched by any alteration or addition to the Work, whether or not there is, in fact, any unjust enrichment to the Work, shall be the basis of any claim to an increase in any amounts due under the Contract Documents or a change in any time period provided for in the Contract Documents.

§13.6 Agreement on any Change Order shall constitute a final settlement of all matters relating to the change in the Work that is the subject of the Change Order, including but not limited to, all direct and indirect costs associated with such change and any and all adjustments to the Contract Sum and the construction schedule.

ARTICLE 14 TIME

§ 14.1 Time limits stated in the Contract Documents are of the essence of the Contract. By executing the Agreement the Contractor confirms that the Contract Time is a reasonable period for performing the Work.

§ 14.2 Unless otherwise provided, Contract Time is the period of time, including authorized adjustments, allotted in the Contract Documents for Substantial Completion of the Work.

§ 14.3 The term "day" as used in the Contract Documents shall mean calendar day unless otherwise specifically defined.

§ 14.4 The date of Substantial Completion is the date certified by the Architect in accordance with Section 15.4.3.

§ 14.5 If the Contractor is delayed at any time in the commencement or progress of the Work by changes ordered in the Work, by labor disputes, fire, unusual delay in deliveries, abnormal adverse weather conditions not reasonably anticipatable, unavoidable casualties or any causes beyond the Contractor's control, or by other causes which the Architect determines may justify delay, then the Contract Time shall be extended by Change Order for such reasonable time as the Architect may determine, subject to the provisions of Article 21.

ARTICLE 15 PAYMENTS AND COMPLETION

§ 15.1 APPLICATIONS FOR PAYMENT

§ 15.1.1 Where the Contract is based on a Stipulated Sum or the Cost of the Work with a Guaranteed Maximum Price, the Contractor shall submit to the Architect, before the first Application for Payment, a schedule of values, allocating the entire Contract Sum to the various portions of the Work, prepared in such form and supported by such data to substantiate its accuracy as the Architect may require. This schedule, unless objected to by the Architect, shall be used in reviewing the Contractor's Applications for Payment.

§ 15.1.2 With each Application for Payment where the Contract Sum is based upon the Cost of the Work, or the Cost of the Work with a Guaranteed Maximum Price, the Contractor shall submit payrolls, petty cash accounts, receipted invoices or invoices with check vouchers attached, and any other evidence required by the Owner to demonstrate that cash disbursements already made by the Contractor on account of the Cost of the Work equal or exceed (1) progress payments already received by the Contractor, less (2) that portion of those payments attributable to the Contractor's Fee; plus (3) payrolls for the period covered by the present Application for Payment.

§ 15.1.3 Payments shall be made on account of materials and equipment delivered and suitably stored at the site for subsequent incorporation in the Work. If approved in advance by the Owner, payment may similarly be made for materials and equipment stored, and protected from damage, off the site at a location agreed upon in writing.

§ 15.1.4 The Contractor warrants that title to all Work covered by an Application for Payment will pass to the Owner no later than the time of payment. The Contractor further warrants that upon submittal of an Application for Payment all Work for which Certificates for Payment have been previously issued and payments received from the Owner shall, to the best of the Contractor's knowledge, information and belief, be free and clear of liens, claims, security interests or other encumbrances adverse to the Owner's interests.

[Add the following new Subparagraph:](#)

[§ 15.1.5. Partial payments will be made monthly on proper application. Certification will be issued for ninety percent \(90%\) of the amount requested by the Contractor and approved by the Architect to be properly due until at least fifty percent \(50%\) of the Contract amount has been paid. Thereafter, the accumulated retainage will remain at five percent \(5%\) of the Contract amount \(including additions, if any\) except that should the Contractor at any time fail to keep current with the approved progress schedule, certification of ninety percent \(90%\) shall automatically again become effective and shall apply so long as the Contract progress lags behind such progress schedule.](#)

§ 15.2 CERTIFICATES FOR PAYMENT

§ 15.2.1 The Architect will, within seven days after receipt of the Contractor's Application for Payment, either issue to the Owner a Certificate for Payment, with a copy to the Contractor, for such amount as the Architect determines is properly due, or notify the Contractor and Owner in writing of the Architect's reasons for withholding certification in whole or in part as provided in Section 15.2.3.

§ 15.2.2 The issuance of a Certificate for Payment will constitute a representation by the Architect to the Owner, based on the Architect's evaluations of the Work and the data comprising the Application for Payment, that, to the best of the Architect's knowledge, information and belief, the Work has progressed to the point indicated and that the quality of the Work is in accordance with the Contract Documents. The foregoing representations are subject to an evaluation of the Work for conformance with the Contract Documents upon Substantial Completion, to results of subsequent tests and inspections, to correction of minor deviations from the Contract Documents prior to completion and to specific qualifications expressed by the Architect. The issuance of a Certificate for Payment will further constitute a representation that the Contractor is entitled to payment in the amount certified. However, the issuance of a Certificate for Payment will not be a representation that the Architect has (1) made exhaustive or continuous on-site inspections to check the quality or quantity of the Work, (2) reviewed construction means, methods, techniques, sequences or procedures, (3) reviewed copies of requisitions received from Subcontractors and material suppliers and other data requested by the Owner to substantiate the Contractor's right to payment, or (4) made examination to ascertain how or for what purpose the Contractor has used money previously paid on account of the Contract Sum.

§ 15.2.3 The Architect may withhold a Certificate for Payment in whole or in part, to the extent reasonably necessary to protect the Owner, if in the Architect's opinion the representations to the Owner required by Section 15.2.2 cannot be made. If the Architect is unable to certify payment in the amount of the Application, the Architect will notify the Contractor and Owner as provided in Section 15.2.1. If the Contractor and the Architect cannot agree on a revised amount, the Architect will promptly issue a Certificate for Payment for the amount for which the Architect is able to make such representations to the Owner. The Architect may also withhold a Certificate for Payment or, because of subsequently discovered evidence, may nullify the whole or a part of a Certificate for Payment previously issued, to such extent as may be necessary in the Architect's opinion to protect the Owner from loss for which the Contractor is responsible, including loss resulting from acts and omissions described in Section 9.2.2, because of

- .1 defective Work not remedied;
- .2 third party claims filed or reasonable evidence indicating probable filing of such claims unless security acceptable to the Owner is provided by the Contractor;
- .3 failure of the Contractor to make payments properly to Subcontractors or for labor, materials or equipment;
- .4 reasonable evidence that the Work cannot be completed for the unpaid balance of the Contract Sum;
- .5 damage to the Owner or a separate contractor;
- .6 reasonable evidence that the Work will not be completed within the Contract Time and that the unpaid balance would not be adequate to cover actual or liquidated damages for the anticipated delay; or
- .7 repeated failure to carry out the Work in accordance with the Contract Documents.

§ 15.2.4 When the above reasons for withholding certification are removed, certification will be made for amounts previously withheld.

§ 15.3 PROGRESS PAYMENTS

§ 15.3.1 The Contractor shall pay each Subcontractor, no later than seven days after receipt of payment, the amount to which the Subcontractor is entitled, reflecting percentages actually retained from payments to the Contractor on account of the Subcontractor's portion of the Work. The Contractor shall, by appropriate agreement with each Subcontractor, require each Subcontractor to make payments to sub-subcontractors in similar manner.

§ 15.3.2 Neither the Owner nor Architect shall have an obligation to pay or see to the payment of money to a Subcontractor except as may otherwise be required by law.

§ 15.3.3 A Certificate for Payment, a progress payment, or partial or entire use or occupancy of the Project by the Owner shall not constitute acceptance of Work not in accordance with the Contract Documents.

§ 15.4 SUBSTANTIAL COMPLETION

§ 15.4.1 Substantial Completion is the stage in the progress of the Work when the Work or designated portion thereof is sufficiently complete in accordance with the Contract Documents so that the Owner can occupy or utilize the Work for its intended use.

§ 15.4.2 When the Contractor considers that the Work, or a portion thereof which the Owner agrees to accept separately, is substantially complete, the Contractor shall prepare and submit to the Architect a comprehensive list of items to be completed or corrected prior to final payment. Failure to include an item on such list does not alter the responsibility of the Contractor to complete all Work in accordance with the Contract Documents.

§ 15.4.3 Upon receipt of the Contractor's list, the Architect will make an inspection to determine whether the Work or designated portion thereof is substantially complete. When the Architect determines that the Work or designated portion thereof is substantially complete, the Architect will issue a Certificate of Substantial Completion which shall establish the date of Substantial Completion, establish responsibilities of the Owner and Contractor for security, maintenance, heat, utilities, damage to the Work and insurance, and fix the time within which the Contractor shall finish all items on the list accompanying the Certificate. Warranties required by the Contract Documents shall commence on the date of Substantial Completion of the Work or designated portion thereof unless otherwise provided in the Certificate of Substantial Completion.

§ 15.4.4 The Certificate of Substantial Completion shall be submitted to the Owner and Contractor for their written acceptance of responsibilities assigned to them in such Certificate. Upon such acceptance and consent of surety, if any, the Owner shall make payment of retainage applying to such Work or designated portion thereof. Such payment shall be adjusted for Work that is incomplete or not in accordance with the requirements of the Contract Documents.

§ 15.5 FINAL COMPLETION AND FINAL PAYMENT

§ 15.5.1 Upon receipt of the Contractor's written notice that the Work is ready for final inspection and acceptance and upon receipt of a final Application for Payment, the Architect will promptly make such inspection and, when the Architect finds the Work acceptable under the Contract Documents and the Contract fully performed, the Architect will promptly issue a final Certificate for Payment stating that to the best of the Architect's knowledge, information and belief, and on the basis of the Architect's on-site visits and inspections, the Work has been completed in accordance with terms and conditions of the Contract Documents and that the entire balance found to be due the Contractor and noted in the final Certificate is due and payable. The Architect's final Certificate for Payment will constitute a further representation that conditions stated in Section 15.5.2 as precedent to the Contractor's being entitled to final payment have been fulfilled.

Add the following at the end of Subparagraph 15.5.1: "All warranties, guarantees, operational and parts manuals required under or pursuant to the Contract Documents shall be assembled and delivered by the Contractor to the Architect as part of the final Application for Payment. The final certificate of Payment will not be issued by the Architect until all warranties and guarantees have been received and accepted by the Owner."

§ 15.5.2 Final payment shall not become due until the Contractor has delivered to the Owner a complete release of all liens arising out of this Contract or receipts in full covering all labor, materials and equipment for which a lien could be filed, or a bond satisfactory to the Owner to indemnify the Owner against such lien. If such lien remains unsatisfied after payments are made, the Contractor shall refund to the Owner all money that the Owner may be compelled to pay in discharging such lien, including costs and reasonable attorneys' fees.

§ 15.5.3 The making of final payment shall constitute a waiver of claims by the Owner except those arising from

- .1 liens, claims, security interests or encumbrances arising out of the Contract and unsettled;
- .2 failure of the Work to comply with the requirements of the Contract Documents; or
- .3 terms of special warranties required by the Contract Documents.

§ 15.5.4 Acceptance of final payment by the Contractor, a Subcontractor or material supplier shall constitute a waiver of claims by that payee except those previously made in writing and identified by that payee as unsettled at the time of final Application for Payment.

ARTICLE 16 PROTECTION OF PERSONS AND PROPERTY

§ 16.1 SAFETY PRECAUTIONS AND PROGRAMS

The Contractor shall be responsible for initiating, maintaining and supervising all safety precautions and programs in connection with the performance of the Contract. The Contractor shall take reasonable precautions for safety of, and shall provide reasonable protection to prevent damage, injury or loss to

- .1 employees on the Work and other persons who may be affected thereby;

- .2 the Work and materials and equipment to be incorporated therein, whether in storage on or off the site, under care, custody or control of the Contractor or the Contractor's Subcontractors or Sub-subcontractors; and
- .3 other property at the site or adjacent thereto, such as trees, shrubs, lawns, walks, pavements, roadways, structures and utilities not designated for removal, relocation or replacement in the course of construction.

The Contractor shall comply with and give notices required by applicable laws, statutes, ordinances, codes, rules and regulations, and lawful orders of public authorities bearing on safety of persons and property and their protection from damage, injury or loss. The Contractor shall promptly remedy damage and loss to property caused in whole or in part by the Contractor, a Subcontractor, a sub-subcontractor, or anyone directly or indirectly employed by any of them, or by anyone for whose acts they may be liable and for which the Contractor is responsible under Sections 16.1.2 and 16.1.3, except for damage or loss attributable to acts or omissions of the Owner or Architect or by anyone for whose acts either of them may be liable, and not attributable to the fault or negligence of the Contractor. The foregoing obligations of the Contractor are in addition to the Contractor's obligations under Section 9.15.

Add the following at the end of Paragraph 16.1: "When all or a portion of the Work is suspended for any reason, the Contractor shall securely fasten down all coverings and protect the Work, as necessary, from injury by any cause. The Contractor shall promptly report in writing to the Owner and Architect all accidents arising out of or in connection with the Work that cause death, personal injury, or property damage, giving full details and statements of any witnesses. In addition, if death, serious personal injuries, or serious damages are caused, the accident shall be reported immediately by telephone or messenger to the Owner and the Architect."

§ 16.2 HAZARDOUS MATERIALS

§ 16.2.1 The Contractor is responsible for compliance with the requirements of the Contract Documents regarding hazardous materials. If the Contractor encounters a hazardous material or substance not addressed in the Contract Documents, and if reasonable precautions will be inadequate to prevent foreseeable bodily injury or death to persons resulting from a material or substance, including but not limited to asbestos or polychlorinated biphenyl (PCB), encountered on the site by the Contractor, the Contractor shall, upon recognizing the condition, immediately stop Work in the affected area and report the condition to the Owner and Architect in writing. When the material or substance has been rendered harmless, Work in the affected area shall resume upon written agreement of the Owner and Contractor. By Change Order, the Contract Time shall be extended appropriately and the Contract Sum shall be increased in the amount of the Contractor's reasonable additional costs of shutdown, delay and start-up.

§ 16.2.2 To the fullest extent permitted by law, the Owner shall indemnify and hold harmless the Contractor, Subcontractors, Architect, Architect's consultants and agents and employees of any of them from and against claims, damages, losses and expenses, including but not limited to attorneys' fees, arising out of or resulting from performance of the Work in the affected area, if in fact, the material or substance presents the risk of bodily injury or death as described in Section 16.2.1 and has not been rendered harmless, provided that such claim, damage, loss or expense is attributable to bodily injury, sickness, disease or death, or to injury to or destruction of tangible property (other than the Work itself), except to the extent that such damage, loss or expense is due to the fault or negligence of the party seeking indemnity.

Delete Subparagraph 16.2.2 in its entirety.

§ 16.2.3 If, without negligence on the part of the Contractor, the Contractor is held liable by a government agency for the cost of remediation of a hazardous material or substance solely by reason of performing Work as required by the Contract Documents, the Owner shall indemnify the Contractor for all cost and expense thereby incurred.

Delete Subparagraph 16.2.3 in its entirety.

ARTICLE 17 INSURANCE AND BONDS

§ 17.1 The Contractor shall purchase from, and maintain in a company or companies lawfully authorized to do business in the jurisdiction in which the Project is located, insurance for protection from claims under workers' compensation acts and other employee benefit acts which are applicable, claims for damages because of bodily injury, including death, and claims for damages, other than to the Work itself, to property which may arise out of or result from the Contractor's operations and completed operations under the Contract, whether such operations be by

the Contractor or by a Subcontractor or anyone directly or indirectly employed by any of them. This insurance shall be written for not less than limits of liability specified in the Contract Documents or required by law, whichever coverage is greater, and shall include contractual liability insurance applicable to the Contractor's obligations under Section 9.15. Certificates of Insurance acceptable to the Owner shall be filed with the Owner prior to commencement of the Work. Each policy shall contain a provision that the policy will not be canceled or allowed to expire until at least 30 days' prior written notice has been given to the Owner. The Contractor shall cause the commercial liability coverage required by the Contract Documents to include: (1) the Owner, the Architect and the Architect's Consultants as additional insureds for claims caused in whole or in part by the Contractor's negligent acts or omissions during the Contractor's operations; and (2) the Owner as an additional insured for claims caused in whole or in part by the Contractor's negligent acts or omissions during the Contractor's completed operations.

§ 17.2 OWNER'S LIABILITY INSURANCE

The Owner shall be responsible for purchasing and maintaining the Owner's usual liability insurance.

[Delete Paragraph 17.2 in its entirety](#)

§ 17.3 PROPERTY INSURANCE

§ 17.3.1 Unless otherwise provided, the Owner shall purchase and maintain, in a company or companies lawfully authorized to do business in the jurisdiction in which the Project is located, property insurance on an "all-risk" or equivalent policy form, including builder's risk, in the amount of the initial Contract Sum, plus the value of subsequent modifications and cost of materials supplied and installed by others, comprising total value for the entire Project at the site on a replacement cost basis without optional deductibles. Such property insurance shall be maintained, unless otherwise provided in the Contract Documents or otherwise agreed in writing by all persons and entities who are beneficiaries of such insurance, until final payment has been made as provided in Section 15.5 or until no person or entity other than the Owner has an insurable interest in the property required by this Section 17.3.1 to be covered, whichever is later. This insurance shall include interests of the Owner, the Contractor, Subcontractors and sub-subcontractors in the Project.

[Delete the word "Owner" in the first line and replace with "Contractor";](#)

[Delete the phrase "Property insurance on an "all risk" or equivalent policy form, including builder's risk" in the second and third lines and replace with the following: "builder's risk insurance, with a deductible not to exceed \\$1,000."](#)

[Delete the word "property" in the fifth line and replace with the words "builder's risk."](#)

§ 17.3.2 The Owner shall file a copy of each policy with the Contractor before an exposure to loss may occur. Each policy shall contain a provision that the policy will not be canceled or allowed to expire, and that its limits will not be reduced, until at least 30 days' prior written notice has been given to the Contractor.

[Delete the first sentence and replace with the following: "The Contractor shall file a copy of each policy with the Owner before an exposure to loss may occur."](#)

[Delete the word "Contractor" in the last line and replace with the word "Owner."](#)

§ 17.3.3 The Owner and Contractor waive all rights against (1) each other and any of their subcontractors, sub-subcontractors, agents and employees, each of the other, and (2) the Architect, Architect's consultants, separate contractors described in Article 12, if any, and any of their subcontractors, sub-subcontractors, agents and employees for damages caused by fire or other causes of loss to the extent covered by property insurance obtained pursuant to Section 17.3 or other property insurance applicable to the Work, except such rights as they have to proceeds of such insurance held by the Owner as fiduciary. The Owner or Contractor, as appropriate, shall require of the Architect, Architect's consultants, separate contractors described in Article 12, if any, and the subcontractors, sub-subcontractors, agents and employees of any of them, by appropriate agreements, written where legally required for validity, similar waivers each in favor of other parties enumerated herein. The policies shall provide such waivers of subrogation by endorsement or otherwise. A waiver of subrogation shall be effective as to a person or entity even though that person or entity would otherwise have a duty of indemnification, contractual or otherwise,

did not pay the insurance premium directly or indirectly, and whether or not the person or entity had an insurable interest in the property damaged.

[Delete Paragraph 17.3.3. in its entirety.](#)

§ 17.3.4 A loss insured under the Owner's property insurance shall be adjusted by the Owner as fiduciary and made payable to the Owner as fiduciary for the insureds, as their interests may appear, subject to requirements of any applicable mortgagee clause. The Contractor shall pay Subcontractors their just shares of insurance proceeds received by the Contractor, and by appropriate agreements, written where legally required for validity, shall require Subcontractors to make payments to their sub-subcontractors in similar manner.

§ 17.4 PERFORMANCE BOND AND PAYMENT BOND

§ 17.4.1 The Owner shall have the right to require the Contractor to furnish bonds covering faithful performance of the Contract and payment of obligations arising thereunder as stipulated in bidding requirements or specifically required in the Contract Documents on the date of execution of the Contract.

§ 17.4.2 Upon the request of any person or entity appearing to be a potential beneficiary of bonds covering payment of obligations arising under the Contract, the Contractor shall promptly furnish a copy of the bonds or shall authorize a copy to be furnished.

ARTICLE 18 CORRECTION OF WORK

§ 18.1 The Contractor shall promptly correct Work rejected by the Architect or failing to conform to the requirements of the Contract Documents, whether discovered before or after Substantial Completion and whether or not fabricated, installed or completed. Costs of correcting such rejected Work, including additional testing and inspections, the cost of uncovering and replacement, and compensation for the Architect's services and expenses made necessary thereby, shall be at the Contractor's expense, unless compensable under Section A.2.7.3 in Exhibit A, Determination of the Cost of the Work.

[Add the following at the end of Subparagraph 18.1: "If prior to the date of Substantial Completion, the Contractor, a Subcontractor, or anyone for whom either is responsible uses or damages any portion of the Work, including, without limitation, mechanical, electrical, plumbing, and other building systems, machinery, equipment, or other mechanical device, the Contractor shall cause such item to be restored to "like new" condition at no expense to the Owner."](#)

[Definition of SUBSTANTIAL COMPLETION: a project is substantially complete when the Owner can legally take occupancy and use the facility for its intended purpose.](#)

§ 18.2 In addition to the Contractor's obligations under Section 9.4, if, within one year after the date of Substantial Completion of the Work or designated portion thereof or after the date for commencement of warranties established under Section 15.4.3, or by terms of an applicable special warranty required by the Contract Documents, any of the Work is found to be not in accordance with the requirements of the Contract Documents, the Contractor shall correct it promptly after receipt of written notice from the Owner to do so unless the Owner has previously given the Contractor a written acceptance of such condition. The Owner shall give such notice promptly after discovery of the condition. During the one-year period for correction of Work, if the Owner fails to notify the Contractor and give the Contractor an opportunity to make the correction, the Owner waives the rights to require correction by the Contractor and to make a claim for breach of warranty.

[Delete all language starting with the words "and to" and continuing through the word "warranty" in the last line of Paragraph 18.2.](#)

[Add the following last sentence to Paragraph 18.2 "The Owner shall, prior to making any written claim, provide the Contractor with an opportunity to make the corrections."](#)

§ 18.3 If the Contractor fails to correct nonconforming Work within a reasonable time, the Owner may correct it in accordance with Section 8.3.

§ 18.4 The one-year period for correction of Work shall be extended with respect to portions of Work first performed after Substantial Completion by the period of time between Substantial Completion and the actual completion of that portion of the Work.

§ 18.5 The one-year period for correction of Work shall not be extended by corrective Work performed by the Contractor pursuant to this Article 18.

Delete existing Paragraph 18.5 in its entirety and replace with the following: "Upon completion of any Work under or pursuant to this Article 18, the one (1) year correction period in connection with the Work requiring correction shall be renewed and recommence. The obligations under Article 18 shall cover any repairs and replacement to any part of the Work or other property caused by the defective Work."

ARTICLE 19 MISCELLANEOUS PROVISIONS

§ 19.1 ASSIGNMENT OF CONTRACT

Neither party to the Contract shall assign the Contract without written consent of the other, except that the Owner may, without consent of the Contractor, assign the Contract to a lender providing construction financing for the Project if the lender assumes the Owner's rights and obligations under the Contract Documents. The Contractor shall execute all consents reasonably required to facilitate such assignment.

§ 19.2 GOVERNING LAW

The Contract shall be governed by the law of the place where the Project is located, except, that if the parties have selected arbitration as the method of binding dispute resolution, the Federal Arbitration Act shall govern Section 21.4.

§ 19.3 TESTS AND INSPECTIONS

Tests, inspections and approvals of portions of the Work required by the Contract Documents or by applicable laws, statutes, ordinances, codes, rules and regulations or lawful orders of public authorities shall be made at an appropriate time. Unless otherwise provided, the Contractor shall make arrangements for such tests, inspections and approvals with an independent testing laboratory or entity acceptable to the Owner, or with the appropriate public authority, and shall bear all related costs of tests, inspections and approvals. The Contractor shall give the Architect timely notice of when and where tests and inspections are to be made so that the Architect may be present for such procedures. The Owner shall bear costs of (1) tests, inspections or approvals that do not become requirements until after bids are received or negotiations concluded, and (2) tests, inspections or approvals where building codes or applicable laws or regulations prohibit the Owner from delegating the costs to the Contractor.

§ 19.4 COMMENCEMENT OF STATUTORY LIMITATION PERIOD

The Owner and Contractor shall commence all claims and causes of action, whether in contract, tort, breach of warranty or otherwise, against the other arising out of or related to the Contract in accordance with the requirements of the final dispute resolution method selected in the Agreement within the period specified by applicable law, but in any case not more than 10 years after the date of Substantial Completion of the Work. The Owner and Contractor waive all claims and causes of action not commenced in accordance with this Section 19.4.

Delete Paragraph 19.4 in its entirety.

ARTICLE 20 TERMINATION OF THE CONTRACT

§ 20.1 TERMINATION BY THE CONTRACTOR

If the Architect fails to certify payment as provided in Section 15.2.1 for a period of 30 days through no fault of the Contractor, or if the Owner fails to make payment as provided in Section 4.1.3 for a period of 30 days, the Contractor may, upon seven additional days' written notice to the Owner and the Architect, terminate the Contract and recover from the Owner payment for Work executed, including reasonable overhead and profit, costs incurred by reason of such termination, and damages.

§ 20.2 TERMINATION BY THE OWNER FOR CAUSE

§ 20.2.1 The Owner may terminate the Contract if the Contractor

- .1 repeatedly refuses or fails to supply enough properly skilled workers or proper materials;
- .2 fails to make payment to Subcontractors for materials or labor in accordance with the respective agreements between the Contractor and the Subcontractors;

- .3 repeatedly disregards applicable laws, statutes, ordinances, codes, rules and regulations or lawful orders of a public authority; or
- .4 otherwise is guilty of substantial breach of a provision of the Contract Documents.

§ 20.2.2 When any of the above reasons exists, the Owner, upon certification by the Architect that sufficient cause exists to justify such action, may, without prejudice to any other remedy the Owner may have and after giving the Contractor seven days' written notice, terminate the Contract and take possession of the site and of all materials, equipment, tools, and construction equipment and machinery thereon owned by the Contractor and may finish the Work by whatever reasonable method the Owner may deem expedient. Upon request of the Contractor, the Owner shall furnish to the Contractor a detailed accounting of the costs incurred by the Owner in finishing the Work.

§ 20.2.3 When the Owner terminates the Contract for one of the reasons stated in Section 20.2.1, the Contractor shall not be entitled to receive further payment until the Work is finished.

§ 20.2.4 If the unpaid balance of the Contract Sum exceeds costs of finishing the Work, including compensation for the Architect's services and expenses made necessary thereby, and other damages incurred by the Owner and not expressly waived, such excess shall be paid to the Contractor. If such costs and damages exceed the unpaid balance, the Contractor shall pay the difference to the Owner. The amount to be paid to the Contractor or Owner, as the case may be, shall be certified by the Architect, upon application, and this obligation for payment shall survive termination of the Contract.

§ 20.3 TERMINATION BY THE OWNER FOR CONVENIENCE

The Owner may, at any time, terminate the Contract for the Owner's convenience and without cause. The Contractor shall be entitled to receive payment for Work executed, and costs incurred by reason of such termination, along with reasonable overhead and profit on the Work not executed.

Add following new paragraphs:

§20.3.1 The Owner may, at any time, terminate the Contract for the Owner's convenience and without cause.

§20.3.2 Upon receipt of written notice from the Owner of such termination for the Owner's convenience, the Contractor shall:

§20.3.2.1 cease operations as directed by the Owner in the notice:

§20.3.2.2 take actions necessary, or that the Owner may direct, for the protection and preservation of the Work;

§20.3.2.3 except for Work directed to be performed prior to the effective date of termination stated in the notice, terminate all existing subcontracts and purchase orders and enter into no further subcontracts and purchase orders.

§20.3.3 Upon such termination, the Contractor shall recover as its sole remedy payment for Work properly performed in connection with the terminated portion of the Work prior to the effective date of termination and for items properly and timely fabricated off the Project site, delivered, and stored in accordance with the Owner's instructions. The Contractor hereby waives and forfeits all other claims for payment and damages, including, without limitation, anticipated profits. Owner shall be credited for (i) payments previously made to the Contractor for the terminated portion of the work, (ii) claims that the Owner has against the Contractor under the Contract, and (iii) the value of the materials, supplies, equipment, or other items that are to be disposed of by the Contractor that are part of the Contract Sum."

ARTICLE 21 CLAIMS AND DISPUTES

§ 21.1 Claims, disputes and other matters in question arising out of or relating to this Contract, including those alleging an error or omission by the Architect but excluding those arising under Section 16.2, shall be referred initially to the Architect for decision. Such matters, except those waived as provided for in Section 21.8 and Sections 15.5.3 and 15.5.4, shall, after initial decision by the Architect or 30 days after submission of the matter to the Architect, be subject to mediation as a condition precedent to binding dispute resolution.

Add the following at the end of the first sentence in Subparagraph 21.1: "if the claimant recognizes the claim prior to the date of final payment."

Delete the following: "Such matters except those waived as provided for in Section 21.8 and Sections 15.5.3 and 15.5.4 shall, after initial decision by the Architect or 30 days after submission of the matter to the Architect, be subject to mediation as a condition precedent to binding dispute resolution."

Add the following: "The Contractor and Owner shall not be obligated to resolve any claim, dispute or other matters related to the contract by mediation or arbitration. Any reference in the contract documents to mediation or arbitration is deemed void."

§ 21.2 If a claim, dispute or other matter in question relates to or is the subject of a mechanic's lien, the party asserting such matter may proceed in accordance with applicable law to comply with the lien notice or filing deadlines.

Delete Paragraph 21.2 in its entirety.

§ 21.3 The parties shall endeavor to resolve their disputes by mediation which, unless the parties mutually agree otherwise, shall be administered by the American Arbitration Association in accordance with their Construction Industry Mediation Procedures in effect on the date of the Agreement. A request for mediation shall be made in writing, delivered to the other party to this Agreement, and filed with the person or entity administering the mediation. The request may be made concurrently with the binding dispute resolution but, in such event, mediation shall proceed in advance of binding dispute resolution proceedings, which shall be stayed pending mediation for a period of 60 days from the date of filing, unless stayed for a longer period by agreement of the parties or court order. If an arbitration is stayed pursuant to this Section, the parties may nonetheless proceed to the selection of the arbitrator(s) and agree upon a schedule for later proceedings.

Delete Paragraph 21.3 in its entirety.

§ 21.4 If the parties have selected arbitration as the method for binding dispute resolution in the Agreement, any claim, subject to, but not resolved by, mediation shall be subject to arbitration which, unless the parties mutually agree otherwise, shall be administered by the American Arbitration Association, in accordance with the Construction Industry Arbitration Rules in effect on the date of this Agreement. Demand for arbitration shall be made in writing, delivered to the other party to the Contract, and filed with the person or entity administering the arbitration. The award rendered by the arbitrator or arbitrators shall be final, and judgment may be entered upon it in accordance with applicable law in any court having jurisdiction thereof.

Delete Paragraph 21.4 in its entirety.

§ 21.5 Either party, at its sole discretion, may consolidate an arbitration conducted under this Agreement with any other arbitration to which it is a party provided that (1) the arbitration agreement governing the other arbitration permits consolidation; (2) the arbitrations to be consolidated substantially involve common questions of law or fact; and (3) the arbitrations employ materially similar procedural rules and methods for selecting arbitrator(s).

Delete Paragraph 21.5 in its entirety.

§ 21.6 Any party to an arbitration may include by joinder persons or entities substantially involved in a common question of law or fact whose presence is required if complete relief is to be accorded in arbitration provided that the party sought to be joined consents in writing to such joinder. Consent to arbitration involving an additional person or entity shall not constitute consent to arbitration of a Claim not described in the written Consent.

Delete Paragraph 21.6 in its entirety.

§ 21.7 The foregoing agreement to arbitrate and other agreements to arbitrate with an additional person or entity duly consented to by parties to the Agreement shall be specifically enforceable under applicable law in any court having jurisdiction thereof.

[Delete Paragraph 21.7 in its entirety.](#)

§ 21.8 CLAIMS FOR CONSEQUENTIAL DAMAGES

The Contractor and Owner waive claims against each other for consequential damages arising out of or relating to this Contract. This mutual waiver includes

- .1 damages incurred by the Owner for rental expenses, for losses of use, income, profit, financing, business and reputation, and for loss of management or employee productivity or of the services of such persons; and
- .2 damages incurred by the Contractor for principal office expenses including the compensation of personnel stationed there, for losses of financing, business and reputation, and for loss of profit except anticipated profit arising directly from the Work.

This mutual waiver is applicable, without limitation, to all consequential damages due to either party's termination in accordance with Article 20. Nothing contained in this Section 21.8 shall be deemed to preclude an award of liquidated damages, when applicable, in accordance with the requirements of the Contract Documents.

[Delete Paragraph 21.8 in its entirety.](#)

ARTICLE 22 OTHER CONDITIONS OR PROVISIONS

[Add the following paragraphs:](#)

[§22.1 Contractor shall observe the provisions of the Kansas Acts Against Discrimination and shall not discriminate against any person in the performance of work under the present agreement because of race, religion, color, sex, disability, national origin or ancestry.](#)

[§22.2 In all solicitation or advertisements for employees, Contractor shall include the phrase "equal opportunity employer" or a similar phrase to be approved by the Kansas Human Rights Commission.](#)

[§22.3 If Contractor fails to comply with the manner in which Contractor reports to the Kansas Human Rights Commission in accordance with the provisions of K.S.A. 44-1031 and amendments thereto, Contractor shall be deemed to have breached the present contract and it may be canceled, terminated, or suspended in whole or in part, by Sedgwick County \(Owner\).](#)

[§22.4 If Contractor is found guilty of a violation of the Kansas Acts Against Discrimination under a decision of order of the Kansas Human Rights Commission which has become final, Contractor shall be deemed to have breached the present agreement and it may be canceled, terminated or suspended, in whole or in part, by Sedgwick County \(Owner\).](#)

[§22.5 Contractor shall include the provisions of the above paragraphs 22.1 through 22.4, inclusively, in every subcontract or purchase order so that such provisions will be binding upon such subcontractor or vendor."](#)

This Agreement entered into as of the day and year first written above.

OWNER (Signature)

[«Richard Ranzau, Chairman
Commissioner, Fourth District »« »](#)

(Printed name and title)

CONTRACTOR (Signature)

[« »« »](#)

(Printed name and title)

Approved as to Form:

Robert W. Parnacott

Attest:

Kelly B. Arnold
County Clerk

REAR