

ADDENDUM NO. 1

Sedgwick County Project: North Yard Fabric Membrane Salt Storage Structure

The items contained herein now become a part of the referenced plans and specifications. Please read the following items and acknowledge receipt of this addendum on the Proposal Page Number P-1. NOTE: THIS ADDENDUM MUST BE ACKNOWLEDGED TO CONSTITUTE A VALID BID.

SPECS:

Replace NTB-1 with NTB-1R

Changing project description to 52'x140' fabric membrane salt storage structure.

PLANS:

Replace Sheet PS-2 with PS-2R

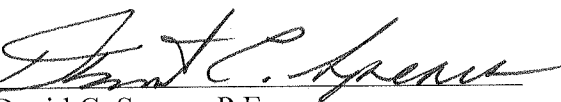
Electrical Layout has changed to utilize exterior lighting; additional lighting details provided.

Replace Sheet PS-3 with PS-3R

Electrical Elevation has changed to utilize exterior lighting.

NOTE:

Plan sheets were developed using the Britespan Atlas 18-52w- L8 profile with 140 ft structure length. The Contractor may substitute an approved equal.

By: 
David C. Spears, P.E.
Director of Public Works/County Engineer

Date: October 14, 2015

NOTICE TO BIDDERS

NOTICE IS HEREBY GIVEN that sealed proposals for construction work in SEDGWICK COUNTY, State of Kansas, said work known as Sedgwick County Project North Yard Fabric Membrane Salt Storage Structure will be received at the Sedgwick County Purchasing Office, 525 N. Main, Room 823, Wichita, Kansas, 67203, until 1:45 p.m., Central Time, Tuesday, November 3, 2015, and then publicly opened at 2:00 p.m. at the Requests for Quotation/Proposal Meeting. Recommendations for purchase will be made the following Thursday at 10:00 a.m. at the Board of Bids and Contracts Meeting. The project to be constructed or improved is briefly described as follows (the "Project"):

52' x 140' fabric membrane salt storage structure

Proposals must be accompanied by a certified or cashier's check, or bid bond with a Surety licensed in the State of Kansas and acceptable to the County Clerk in an amount to be at least five percent (5%) of the proposal. Checks to be made payable to the County Clerk of Sedgwick County, Kansas, and drawn on a solvent Kansas Bank. These checks are to be retained by the County Clerk until the contract for the project shall have been awarded and are a guarantee that if awarded the contract, the bidder will enter a contract and give bonds as required.

Contract Documents are available in electronic form only and may be downloaded from <https://ssc.sedgwickcounty.org/constructionprojects/>.

Company information of persons downloading Contract Documents will be collected to generate a plan holder list which will be updated and available on the Public Works construction project page found at www.sedgwickcounty.org/public_works/construction_info.asp.

If you experience any issues accessing the documents, please contact Julie Williams at Sedgwick County Public Works, (316) 660-1777.

Contract documents for the Project may be viewed at the following locations:

Office of the County Engineer, 1144 S. Seneca, Wichita, Kansas 67213
Office of the County Clerk, 525 N. Main, Wichita, Kansas 67203

The successful bidder will be furnished with one (1) set of paper Contract Documents.

The Board of County Commissioners reserves the right to reject any and all proposals and to waive technicalities.

BOARD OF COUNTY COMMISSIONERS
SEDGWICK COUNTY, KANSAS

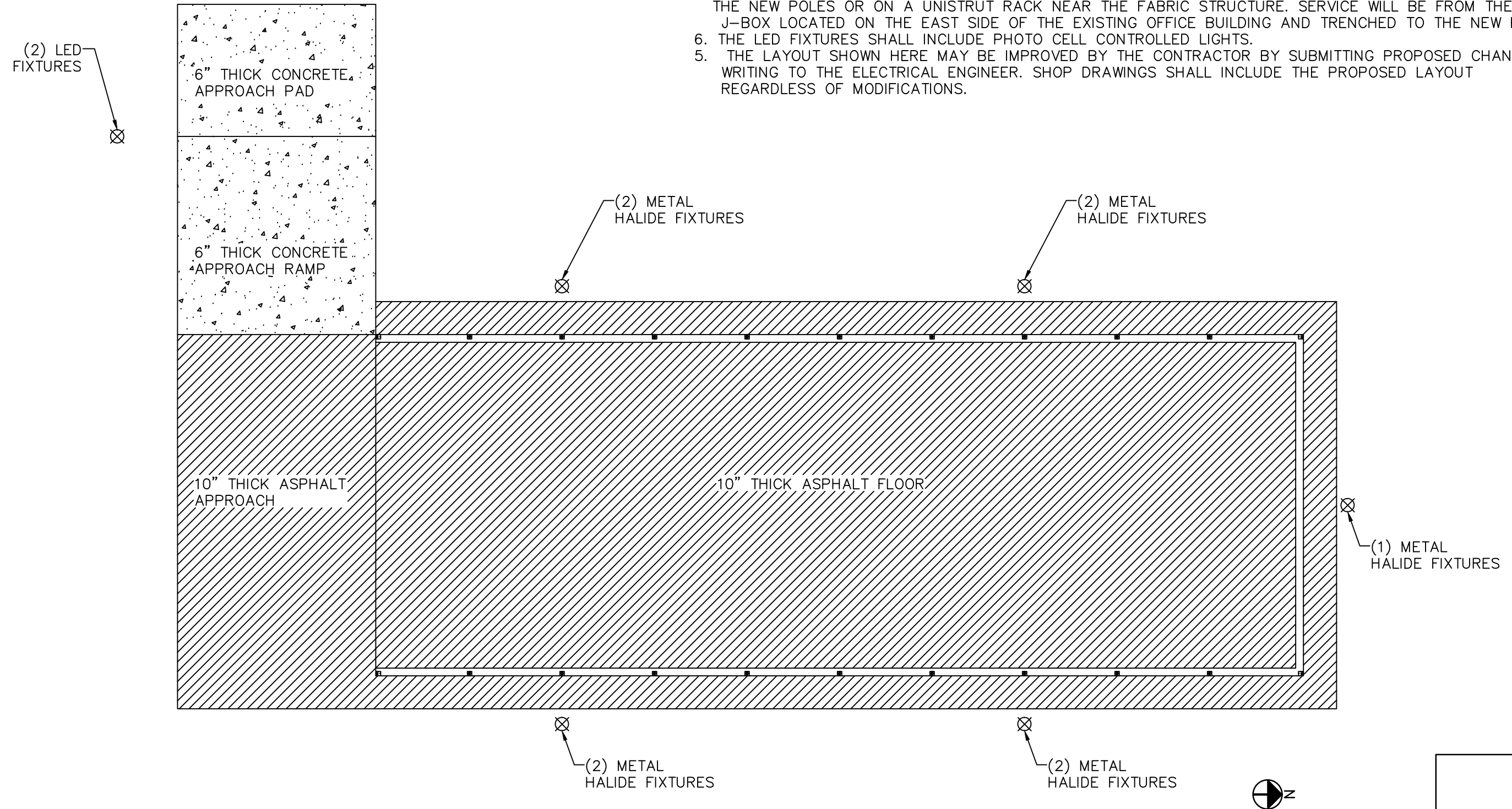
JOB # SCP.15.001

DATE: 10/2/15

BDF

NOTES:

1. TRENCH FROM EXISTING BUILDING TO NEW PANEL
2. FURNISH AND INSTALL (4) 30' STANDARDS WITH (2) 400w METAL HALIDE FIXTURES. (1) 30' STANDARD WITH (1) 400s FIXTURE.
3. FURNISH AND INSTALL (1) 30' STANDARDS WITH (2) LED 400w EQUIVALENT FIXTURE WITH PHOTO CELL CONTROLLED LIGHT
4. LIGHT FIXTURES SHALL BE FULLY SHIELDED.
5. CONTRACTOR SHALL FURNISH AND INSTALL A NEW 100 AMP CIRCUIT AND PANEL TO BE PLACED ON ONE OF THE NEW POLES OR ON A UNISTRUT RACK NEAR THE FABRIC STRUCTURE. SERVICE WILL BE FROM THE EXISTING J-BOX LOCATED ON THE EAST SIDE OF THE EXISTING OFFICE BUILDING AND TRENCHED TO THE NEW PANEL.
6. THE LED FIXTURES SHALL INCLUDE PHOTO CELL CONTROLLED LIGHTS.
5. THE LAYOUT SHOWN HERE MAY BE IMPROVED BY THE CONTRACTOR BY SUBMITTING PROPOSED CHANGES IN WRITING TO THE ELECTRICAL ENGINEER. SHOP DRAWINGS SHALL INCLUDE THE PROPOSED LAYOUT REGARDLESS OF MODIFICATIONS.



REVISIONS				
BY	REV	DESCRIPTION	DATE	APPROVED
BDF	0	ISSUED FOR BID ONLY	10/2/15	MSS

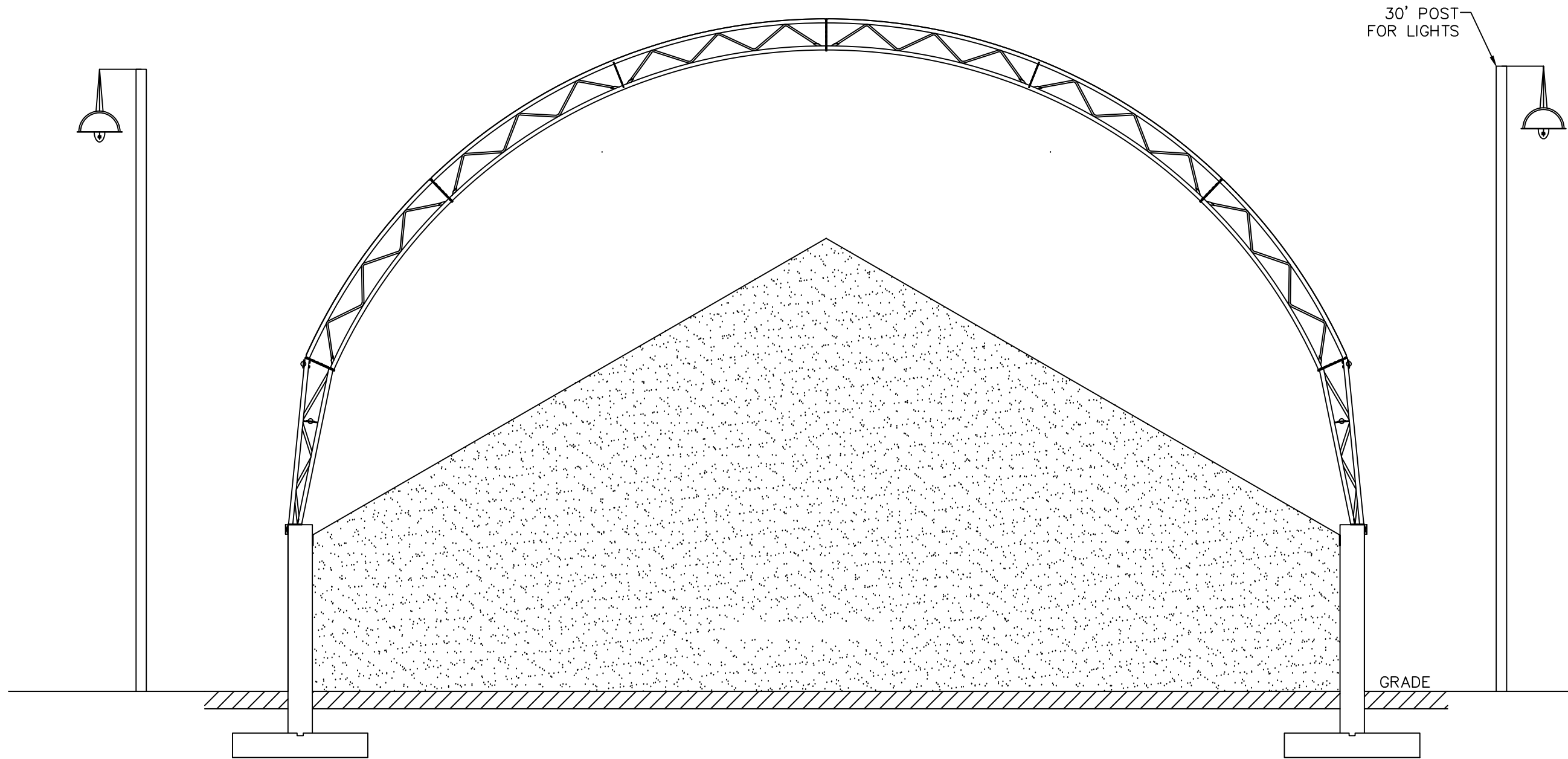
SEDGWICK COUNTY OF PUBLIC WORKS
1144 S SENECA
WICHITA, KS 67213

ELECTRICAL LAYOUT			
SALT STORAGE		WICHITA, KS	
SHEET SIZE B	SCALE: 3/32" = 1'	DWG NO. SCP.15.001	SHEET NO. E-1

JOB # SCP.15.001

DATE: 10/2/15

BDF



ALL ELECTRICAL POST, LIGHTS
FOUNDATION, ETC. ARE NOT
BY SERVINSKY ENGINEERING, PLLC
AND ARE STRICTLY FOR
REFERENCE ONLY.
LOCATIONS FOR ALL ELECTRICAL
WORK, ELECTRICAL SPECIFICATIONS
TO BE FROM REGISTERED ELECTRICAL
ENGINEER.

ELECTRICAL CONTRACTOR
TO SUBMIT ELECTRICAL AND
LIGHTING-DRAWINGS
FOR PERMITS

REVISIONS				
BY	REV	DESCRIPTION	DATE	APPROVED
BDF	0	ISSUED FOR BID ONLY	10/2/15	MSS

SEDGWICK COUNTY OF PUBLIC WORKS
1144 S SENECA
WICHITA, KS 67213

ELECTRICAL ELEVATION (REFERENCE ONLY)			
SALT STORAGE		WICHITA, KS	
SHEET SIZE B	SCALE: NO SCALE	DWG NO. SCP.15.001	SHEET NO. E-2