

COUNTY	STATE	PROJECT NUMBER	FISCAL YEAR	SHEET NO.	TOTAL SHEETS
SEDGWICK	KANSAS	#####	###	###	##

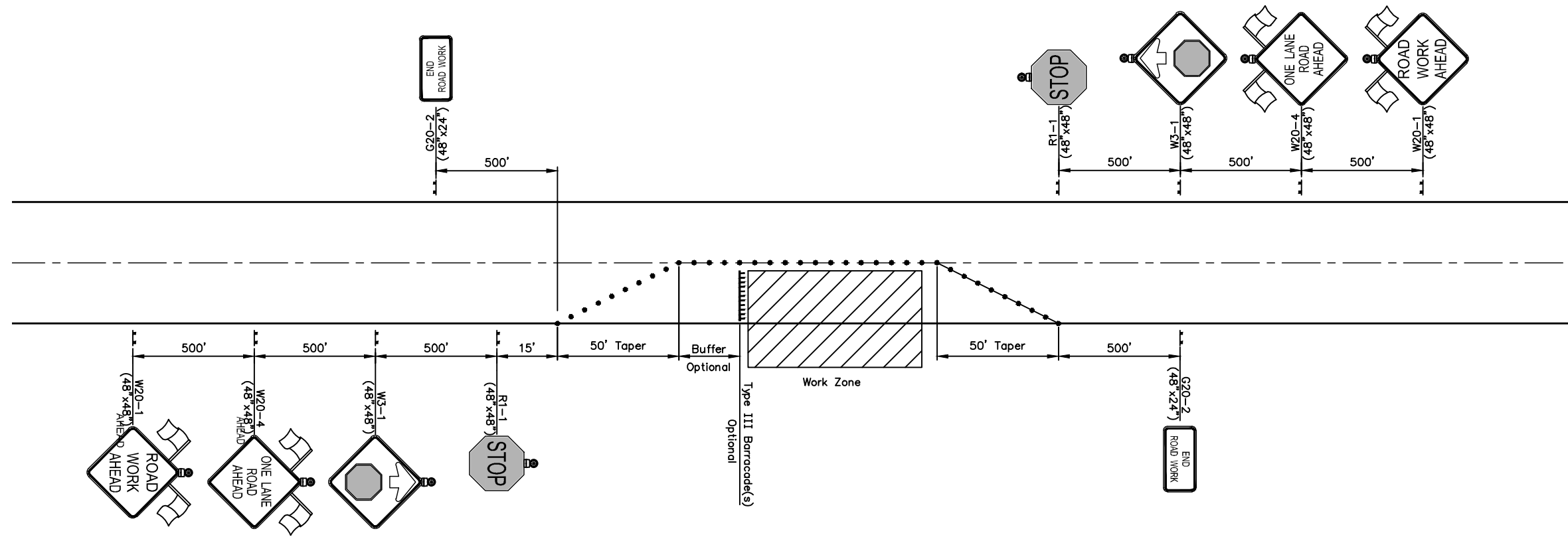
LIST OF TRAFFIC CONTROL DEVICES *

MUTCD DEVICE NO.	NO.	FLASHERS		REMARKS
		TYPE A	TYPE B	
W20-1	2		2	High Intensity Yellow Flasher and Flags
W20-4	2		2	High Intensity Yellow Flasher and Flags
W3-1	2		2	High Intensity Yellow Flasher
R1-1	2		2	High Intensity Red Flasher
G20-2	2			

DELINEATORS & CHANNELIZATION DEVICES				
DEVICE	NO.	SIZE	FLASHERS	
			TYPE A	TYPE B
BARRICADES: TYPE III	As Req'd.	8'		
DRUMS	As Req'd.			
SLIM LINE CHANNELIZERS	As Req'd.			
PAVEMENT MARKING				
	WHITE	YELLOW		
4" BROKEN (Lin. Ft.)				
4" SOLID (Lin. Ft.)				
TEMPORARY STRIPING (Line Mile)				

*FOR INFORMATION ONLY

See Sheet Nos. SheetNumber & SheetNumber for Traffic Control Notes.



NOTES:

All temporary sign supports shall meet all applicable crashworthiness criteria in NCHRP 350 or updated requirements.

Channelization devices shall be either drums or slim line channelizers.

The total length of the traffic control zone between stop signs shall be short enough that drivers from both directions can see approaching traffic beyond the work area. Total traffic control zone lengths in excess of 200' shall be approved in advance by the Engineer.

The traffic control zone, including all advance signing shall be removed at the end of each work day.

If work zone must be protected overnight due to cross sectional issues or equipment left on site, the Contractor shall submit a traffic control plan for review and approval by the Engineer for appropriate signing and other traffic control devices sufficient to provide the required protection. The devices necessary for this protection shall be subsidiary to the bid item "Traffic Control".

LEGEND

- Channelization Device
- Temporary Sign Support w/Sign
- ▨ Type III Barricade(s)

11/2012	Update Sign Symbols & Sizes	JRW/MRB
Rev.Date	Description	By /Chk
#####		
TRAFFIC CONTROL PLAN		
Lane Closure on a Two-Lane Road with Stop Signs		
TC 17-0		
PREPARED BY SEDGWICK COUNTY PUBLIC WORKS HIGHWAY DEPARTMENT		
DAVID C. SPEARS, P.E.		DIRECTOR/COUNTY ENGINEER
SCALE	DESIGNED	DRAWN
NONE	M.R.B.	D.R.S.
DATE	11/2006	11/2006
DWG: TC17		SHEET NO. ###