

Criminal Justice Coordinating Council

Population Report & Program Trends

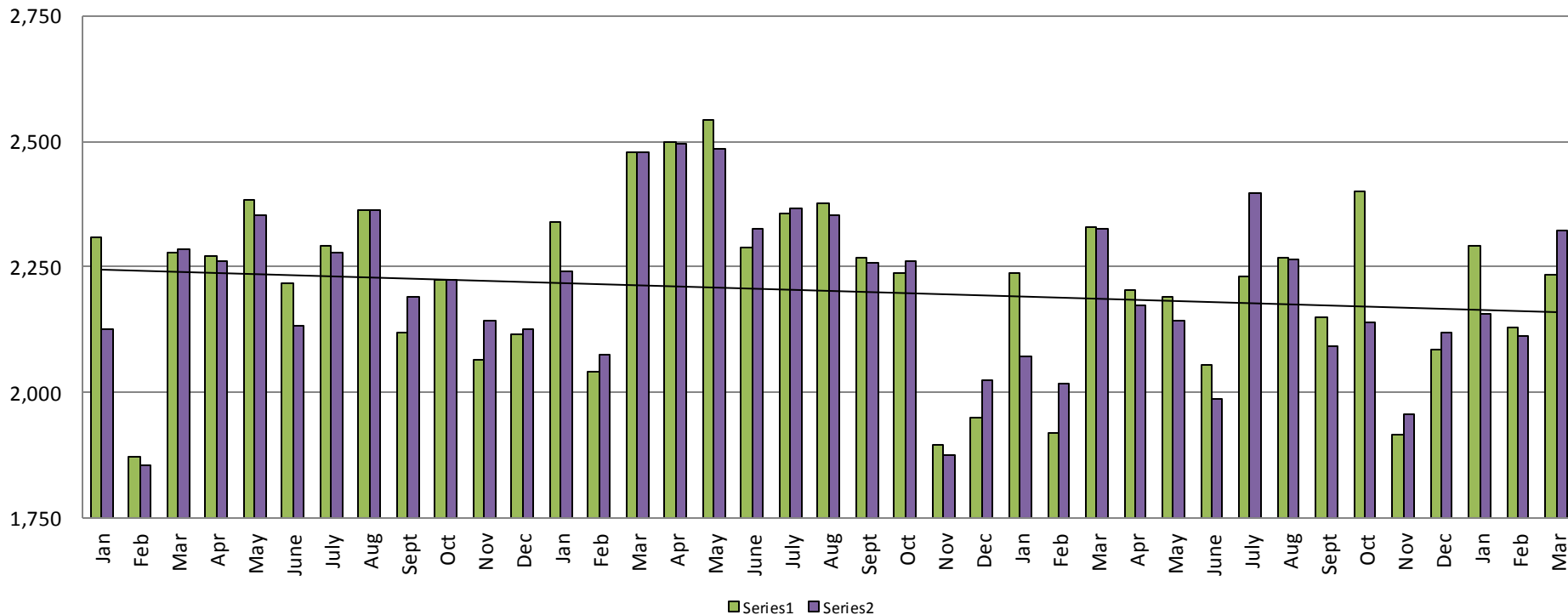
April 28, 2016



Sedgwick County...
working for you

Detention Facility

Booking Admits & Housing Discharges from Custody January 2013 - Present



Housing Discharges for March

2013 = 2,285
 2014 = 2,480
 2015 = 2,326
 2016 = 2,324

Bookings for March

2013 = 2,280
 2014 = 2,477
 2015 = 2,329
 2016 = 2,236

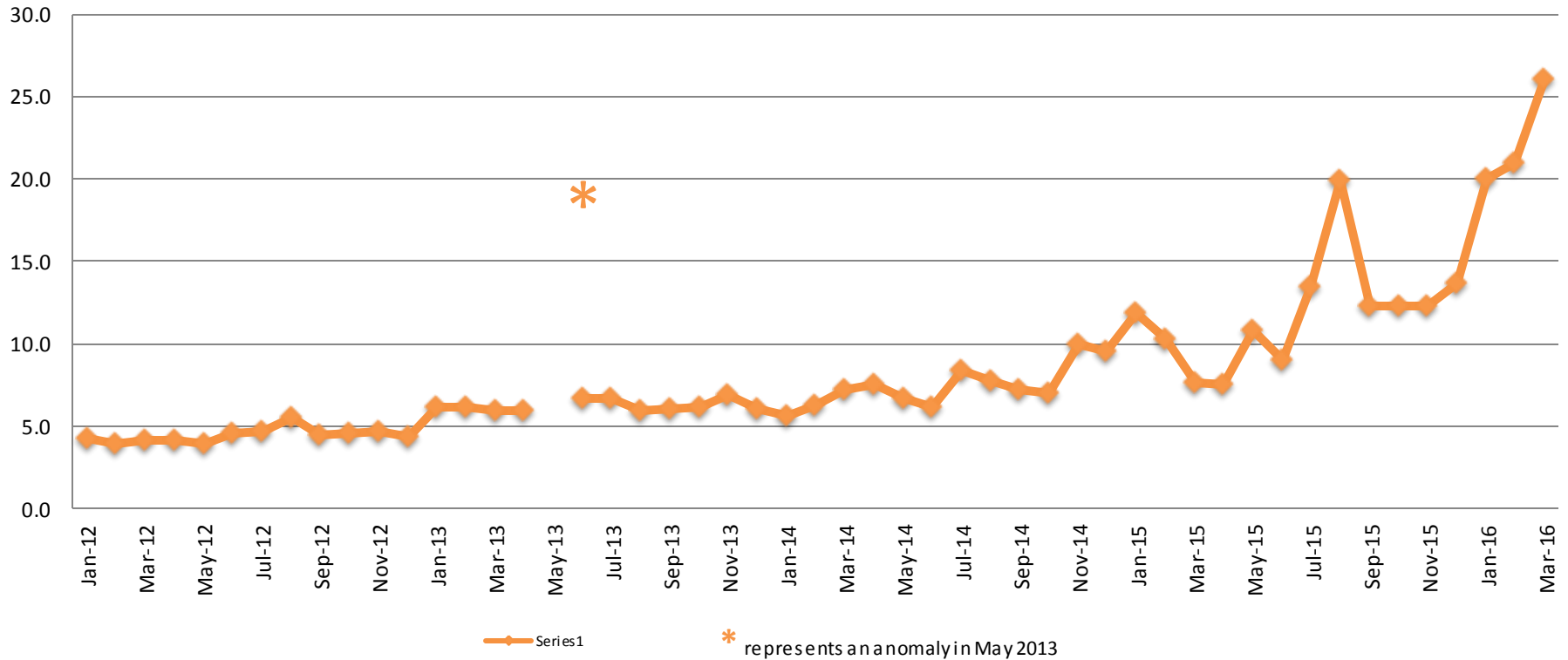
(data obtained from detention facility)



Sedgwick County...
 working for you

Average Length of Stay: Booking (Hours)

January 2012 - Present



March

2013 = 5.9
 2014 = 7.2
 2015 = 7.6
 2016 = 26.0

March YTD Avg.

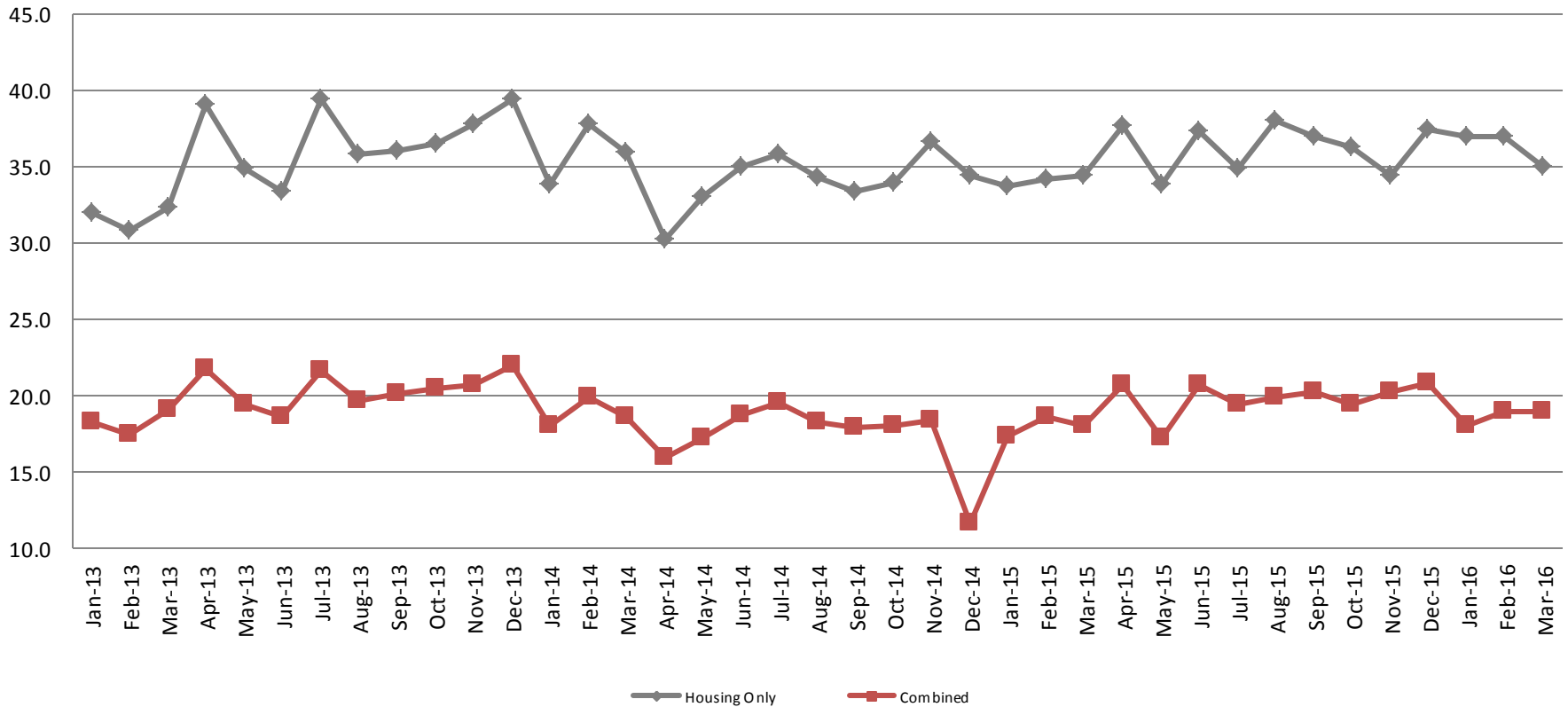
2013 = 6.1
 2014 = 6.4
 2015 = 9.9
 2016 = 22.3

(data obtained from detention facility)

Average Length of Stay: Housing & Combined (Days)

January 2013 - Present

Present



March Housing

2013 = 32.4
 2014 = 35.9
 2015 = 34.5
 2016 = 35.0

March Housing YTD Avg.

2013 = 31.7
 2014 = 35.9
 2015 = 34.2
 2016 = 36.3

March Combined

2013 = 19.1
 2014 = 18.6
 2015 = 18.1
 2016 = 19.0

March Combined YTD Avg.

2013 = 18.3
 2014 = 18.9
 2015 = 18.0
 2016 = 18.7

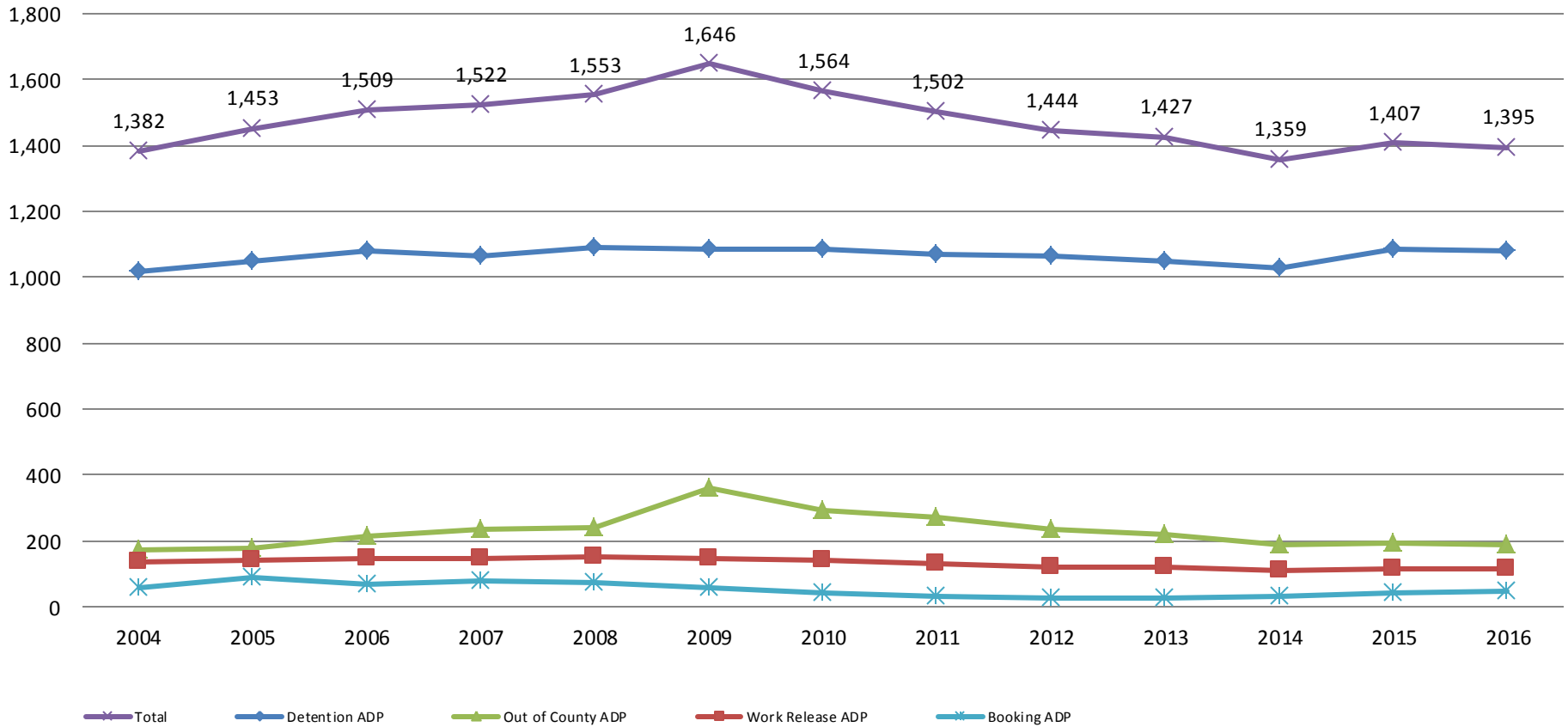


Sedgwick County...
 working for you

(data obtained from detention facility)

Jail: Annual Average Daily Population (ADP)

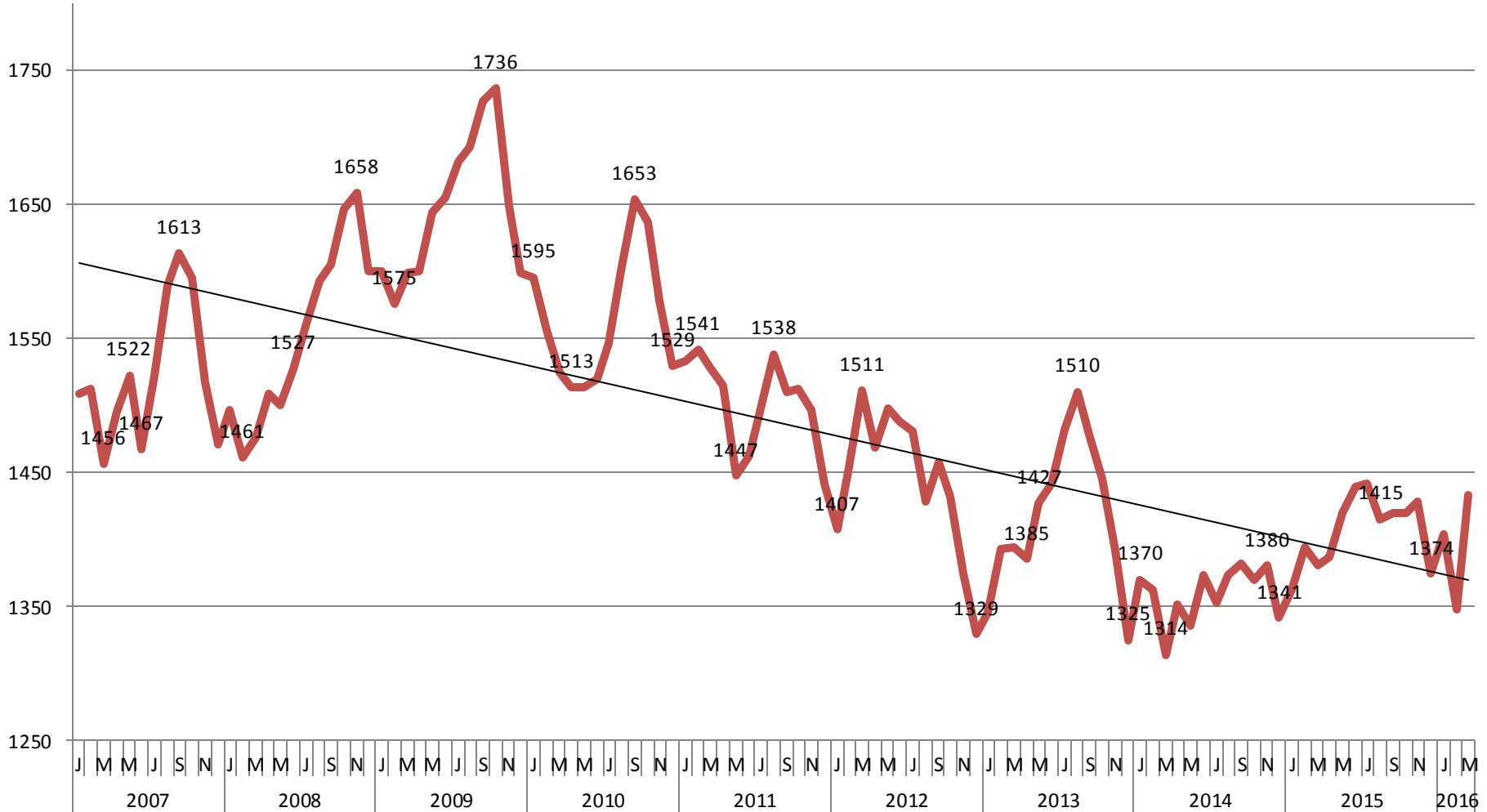
TRENDS: Booking, Detention, Work Release, & Out of County Annual ADP: 2004 - present



TOTAL MONTHLY ADP: JAIL

(Booking, Detention Facility, Work Release, & Out of County)

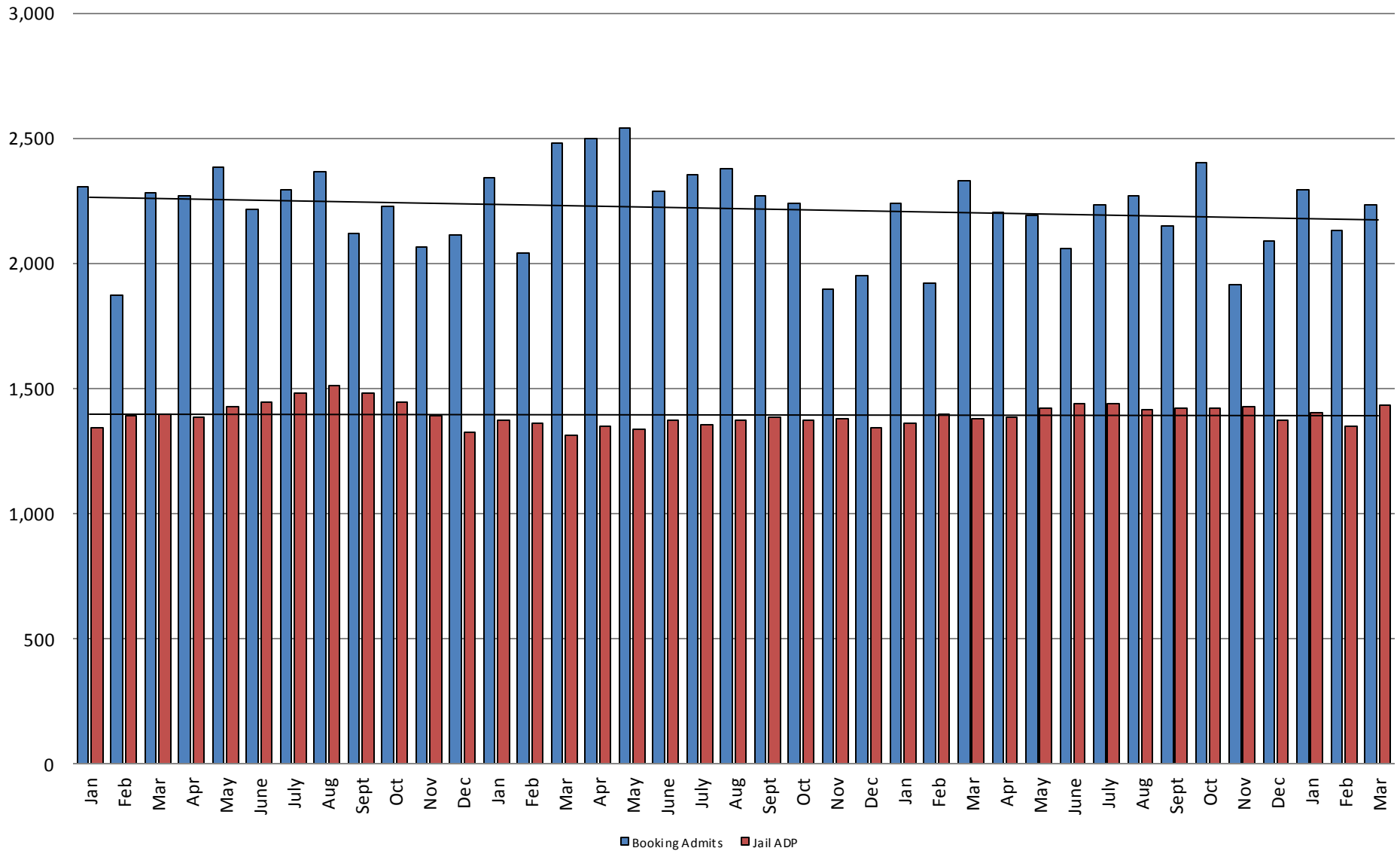
2007 - present



This slide shows total monthly ADP for individuals in booking, detention, work release and out-of county (combined)



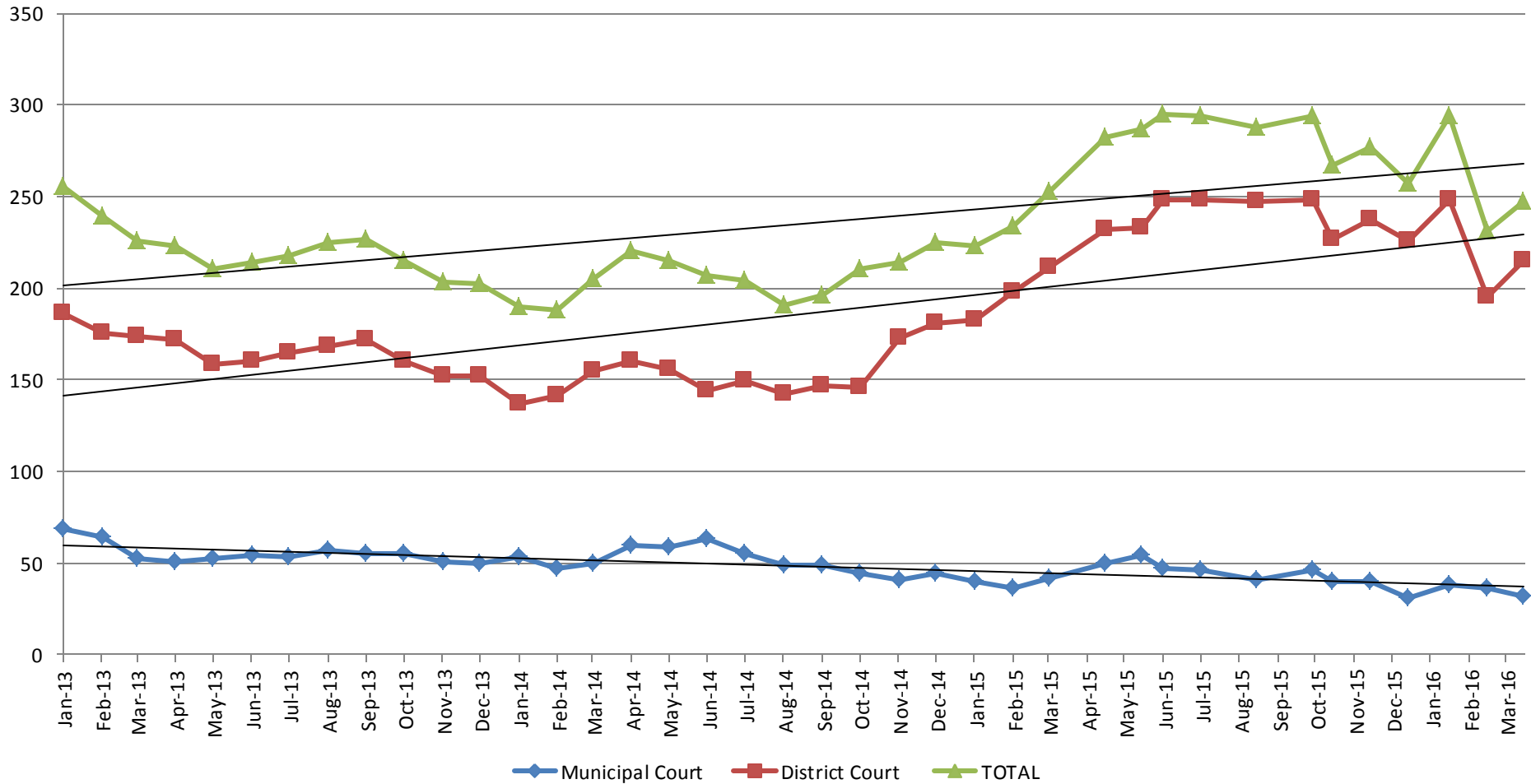
Booking Admits & Total Monthly ADP (Jail): 2013 - present



Jail includes individuals in booking, detention, work release and out-of county (combined)

(data obtained from detention facility)

Pretrial Services Program (PSP) Monthly ADP: January 2013 - Present



March	2013	2014	2015	2016
Municipal Court	52	50	42	32
District Court	174	155	211	215
TOTAL	226	205	253	247

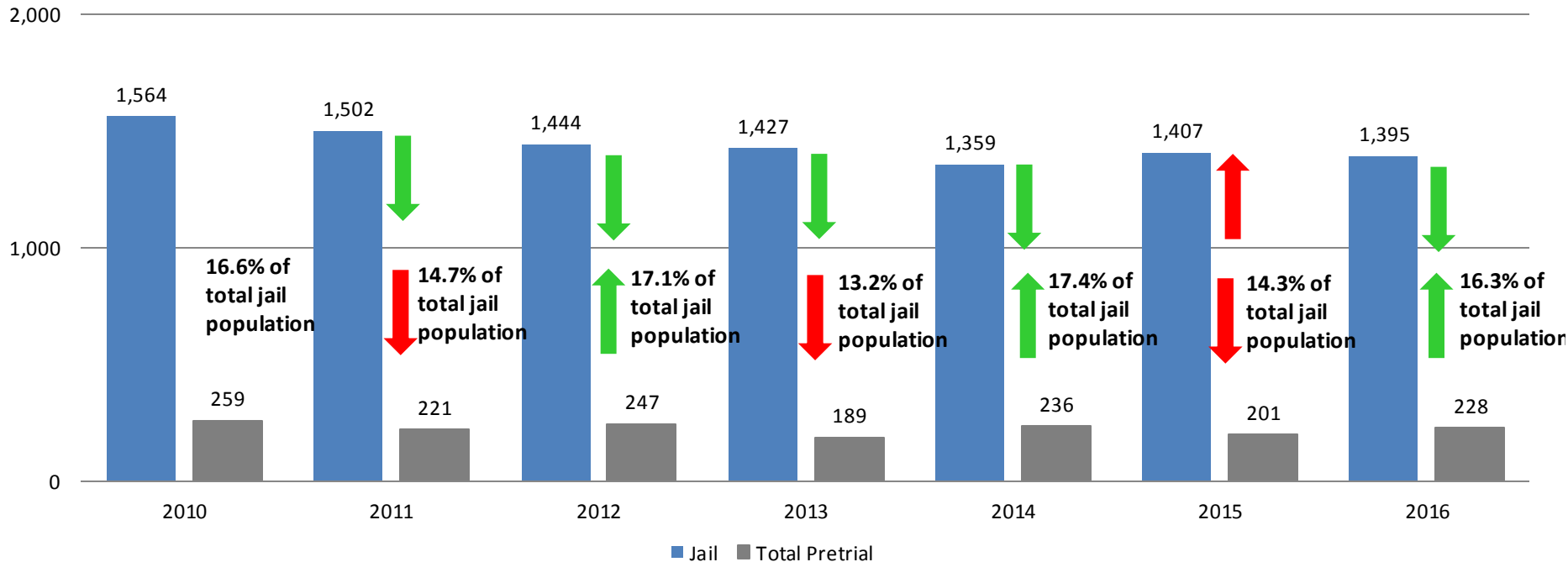
March YTD Avg.	2013	2014	2015	2016
Municipal Court	67	50	39	35
District Court	178	144	197	219
TOTAL	240	194	237	257



(data obtained from Pretrial Services)

Correlation: Total & PSP

Total Annual ADP: 2010 - Present

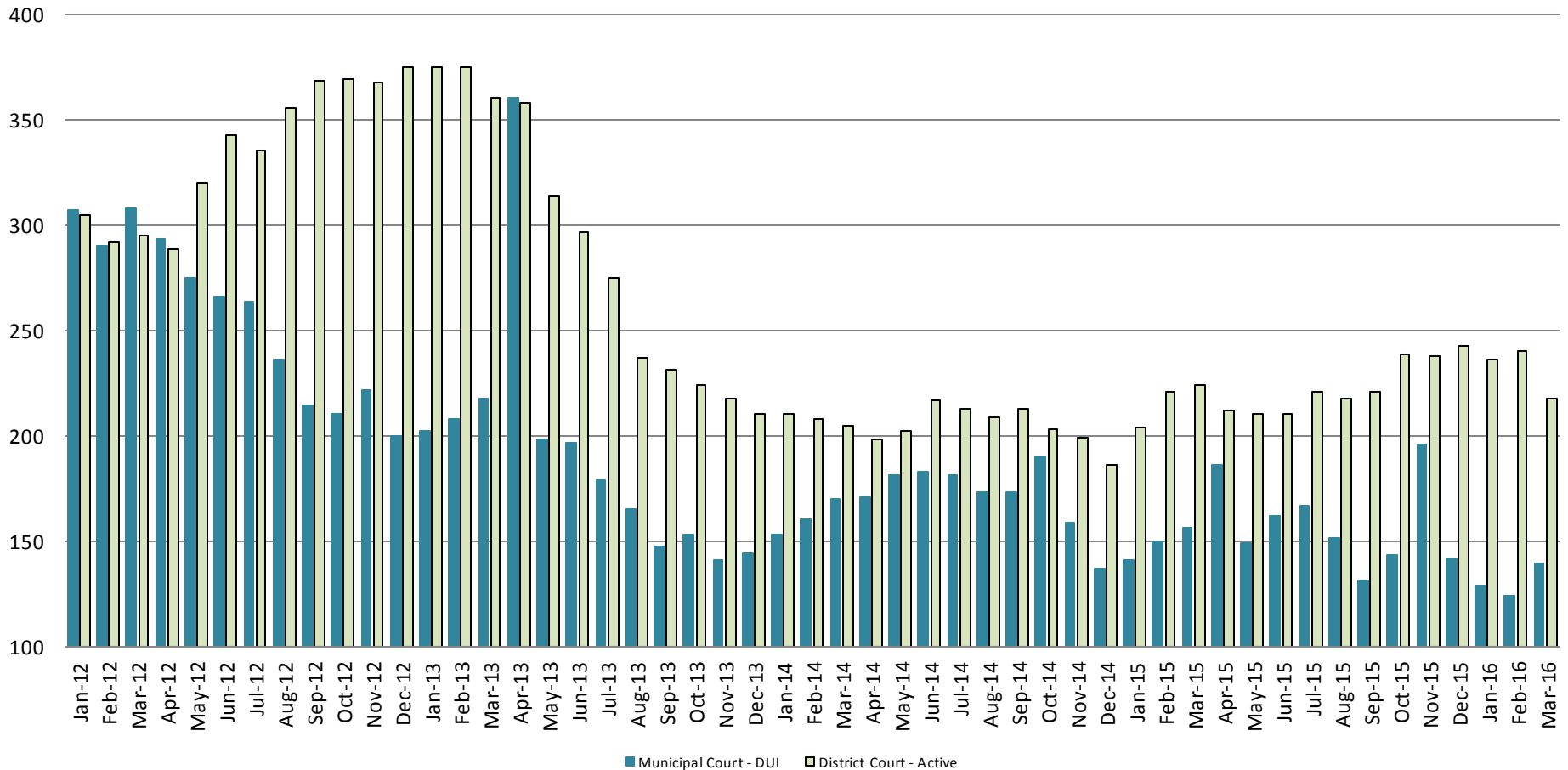


Arrows represent the overall increase/decrease of the population from year to year

Jail includes individuals in booking, detention, work release and out-of county (combined)

Diversion - Active Caseload

January 2012 - Present



March 2013 2014 2015 2016

Municipal Court- DUI	218	170	156	139
District Court- Active	361	205	224	218

March YTD Avg. 2013 2014 2015 2016

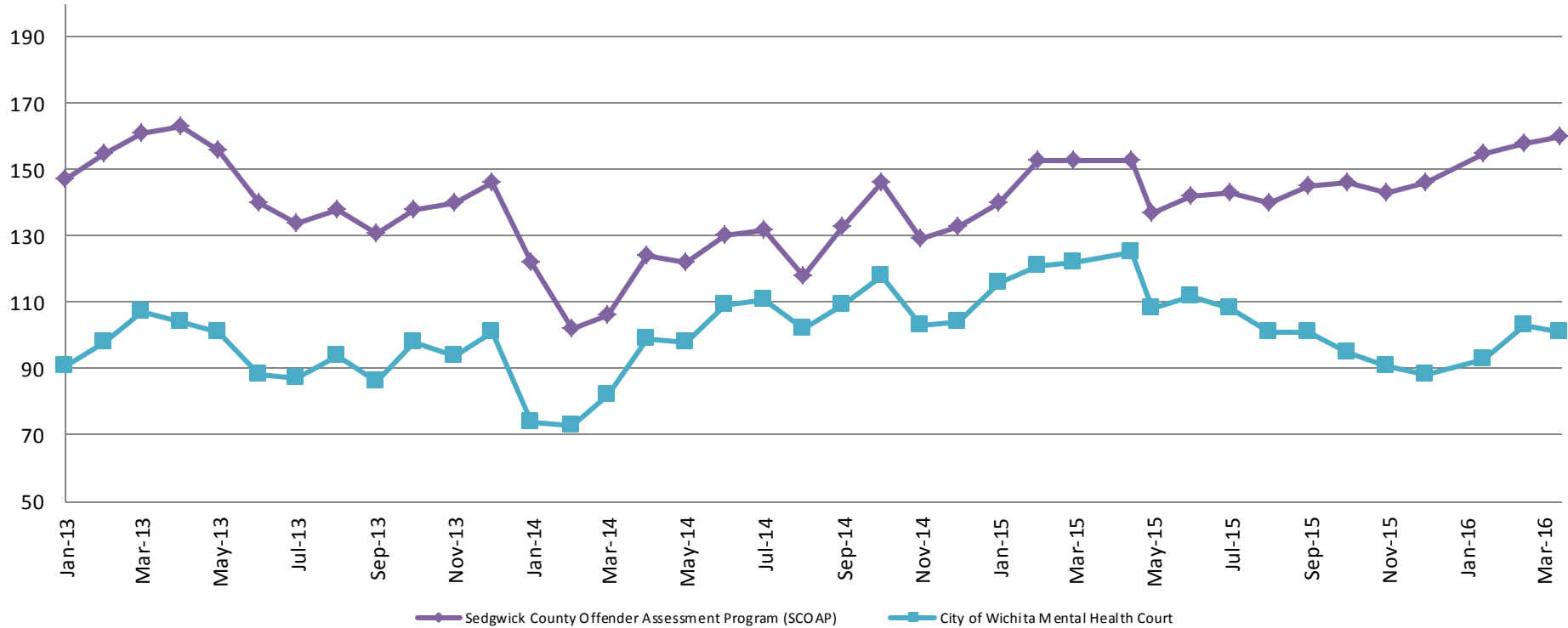
Municipal Court	209	161	149	131
District Court	370	208	216	231



(data obtained from DA's Office & CoW)

Mental Health - ADP

2013 - present

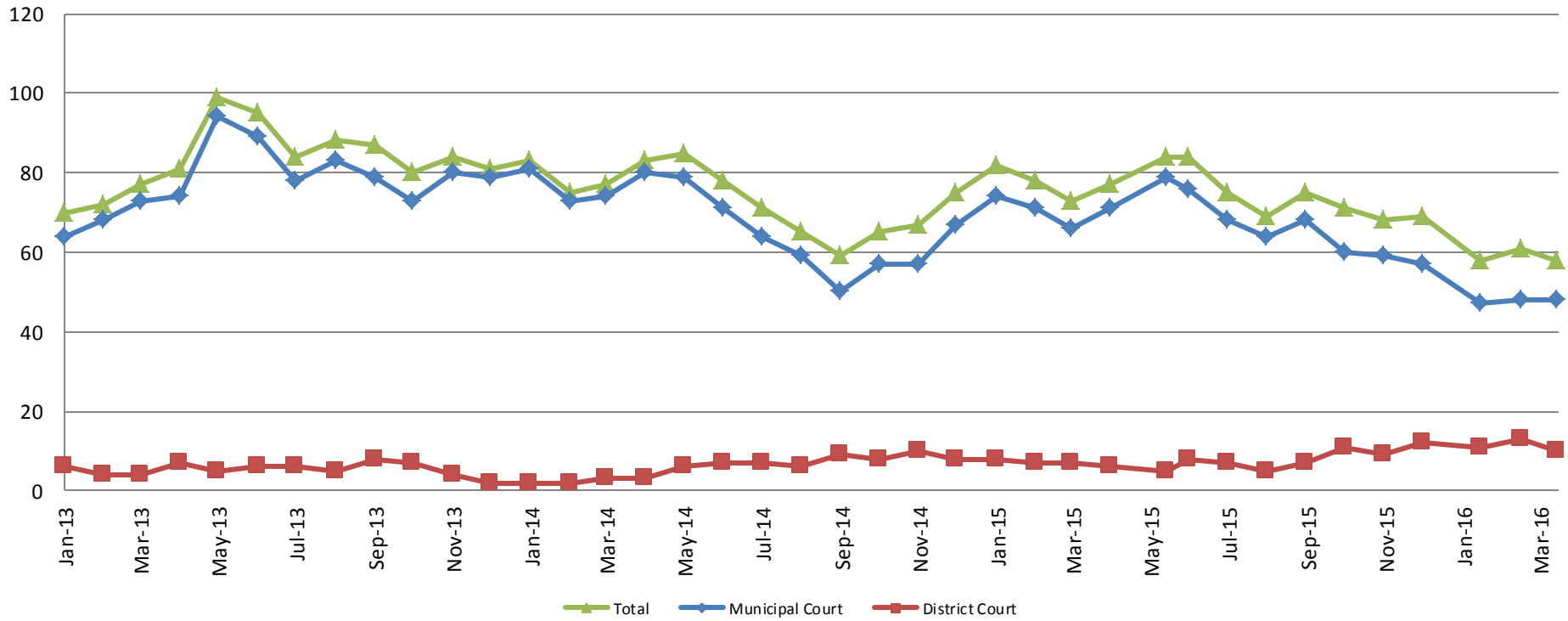


March:	2013	2014	2015	2016
SCOAP	161	106	153	160
CoW – MH Court	107	82	122	101
March YTD Avg.	2013	2014	2015	2016
SCOAP	154	110	149	158
CoW – MH Court	99	76	120	99

(data obtained from COMCARE)

Day Reporting - Active Caseload

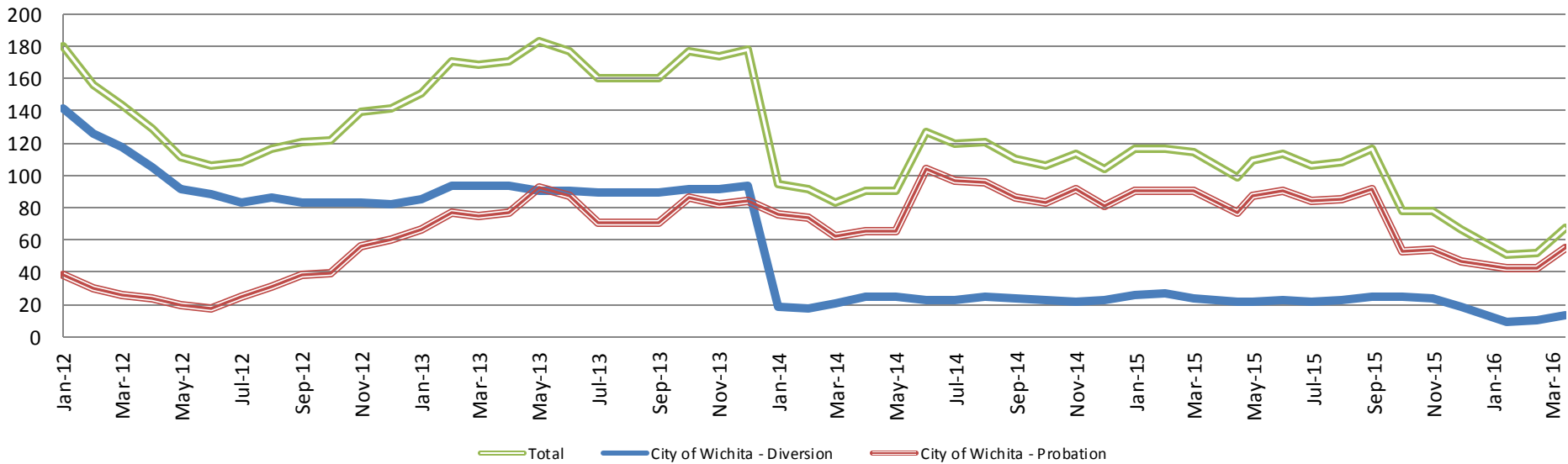
2013-present



March	2013	2014	2015	2016
Municipal Court	73	74	66	48
District Court	4	3	7	10
TOTAL	77	77	73	58
March YTD Avg.	2013	2014	2015	2016
Municipal Court	68	76	70	48
District Court	5	2	7	11
TOTAL	73	78	78	59

Drug Court

Drug Court - City of Wichita ADP: 2012 - present



March - CoW Diversion

2013 = 94
2014 = 21
2015 = 24
2016 = 13

March YTD Avg.

2013 = 91
2014 = 19
2015 = 26
2016 = 11

March - CoW Probation

2013 = 75
2014 = 62
2015 = 90
2016 = 55

March YTD Avg.

2013 = 73
2014 = 71
2015 = 90
2016 = 46

March - CoW Total

2013 = 169
2014 = 83
2015 = 114
2016 = 68

March YTD Avg.

2013 = 164
2014 = 90
2015 = 116
2016 = 57

(data obtained from CoW)



Sedgwick County...
working for you

Drug Court - Sedgwick County ADP: 2012 - present



March- SG CO

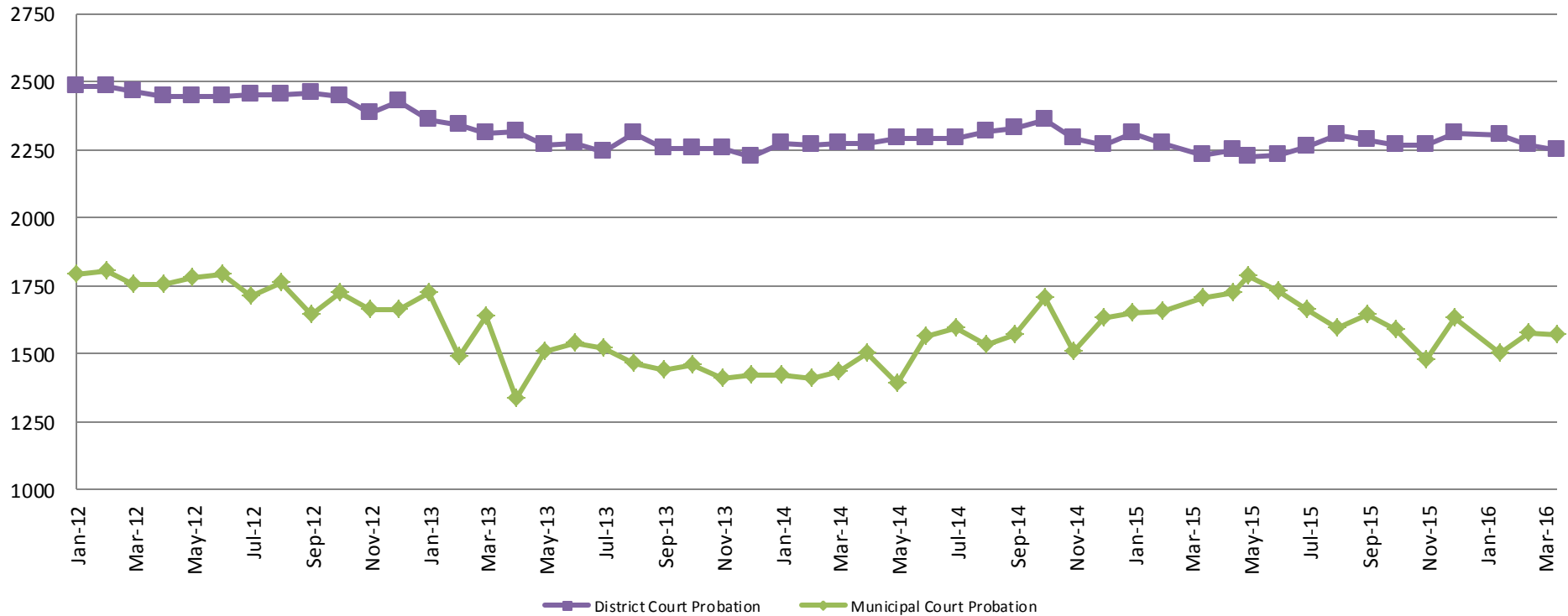
2013 = 105
2014 = 102
2015 = 102
2016 = 110

March YTD Avg.

2013 = 102
2014 = 100
2015 = 98
2016 = 108

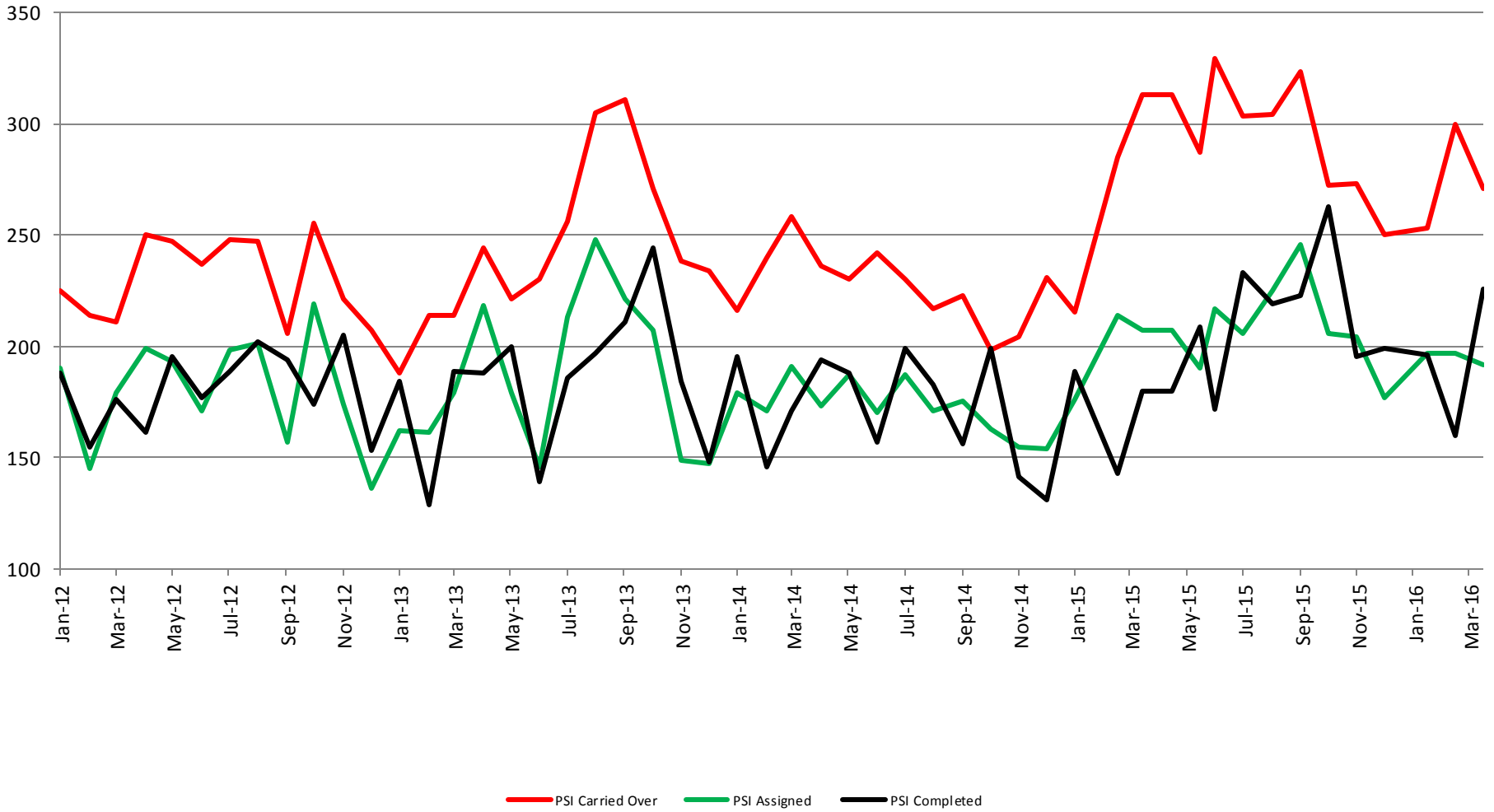


Probation - Active Caseloads 2012 - present



March:	2013	2014	2015	2016
District Court	2,309	2,274	2,230	2,251
Municipal Court	1,637	1,437	1,706	1,572
March YTD Avg.	2013	2014	2015	2016
District Court	2,338	2,272	2,273	2,273
Municipal Court	1,618	1,423	1,672	1,551

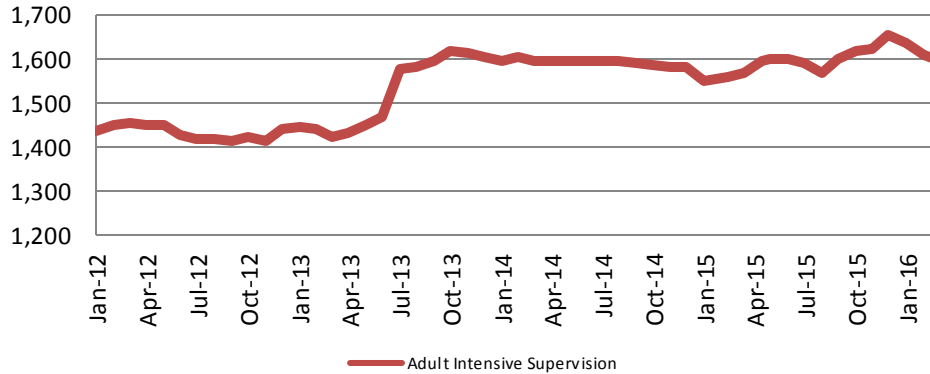
District Court Probation: Pre-Sentence Investigation 2012 - present



(data obtained from District Court)

Community Corrections

**Adult Intensive Supervision Probation (AISP) ADP
2012 - present**



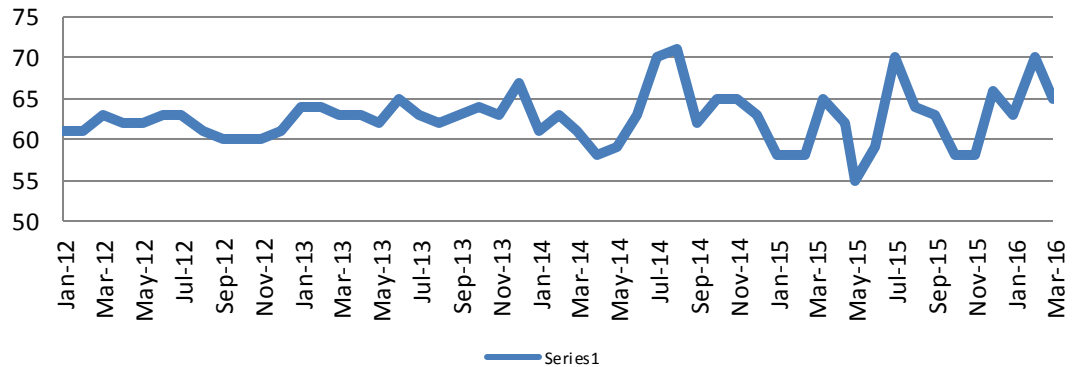
<u>March</u>	<u>March YTD Avg.</u>
2013 = 1,422	2013 = 1,435
2014 = 1,594	2014 = 1,598
2015 = 1,566	2015 = 1,558
2016 = 1,593	2016 = 1,612

(data obtained from SG CO Dept. of Corrections)

*KDOC changed population count to include drug court, residential and AISP beginning July 2013.

**Adult Residential: ADP
2012 - present**

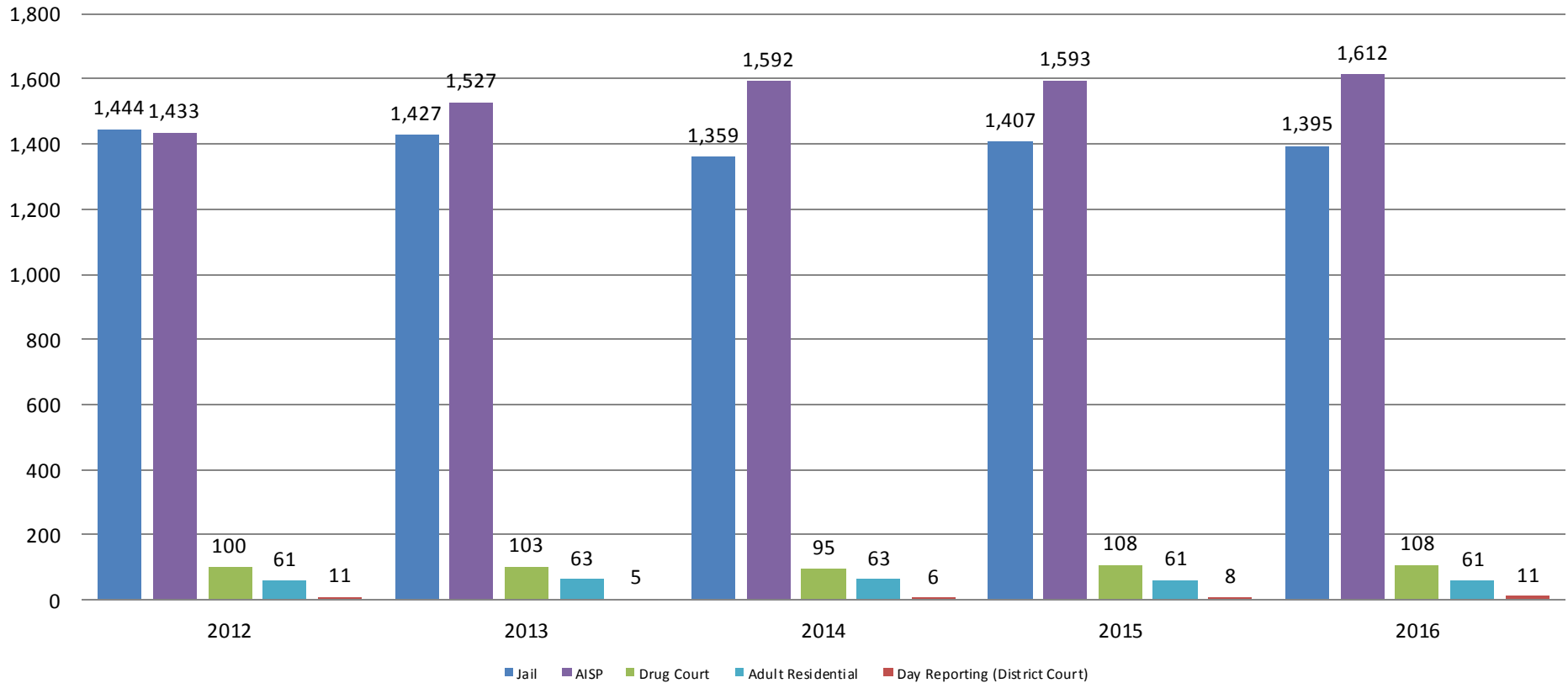
<u>March</u>	<u>March YTD Avg.</u>
2013 = 63	2013 = 64
2014 = 61	2014 = 62
2015 = 65	2015 = 60
2016 = 65	2016 = 66



(data obtained from SG CO Dept. of Corrections)

Correlation: Total & Sedgwick County Programs (Adult)

Total Annual ADP: 2012 - Present

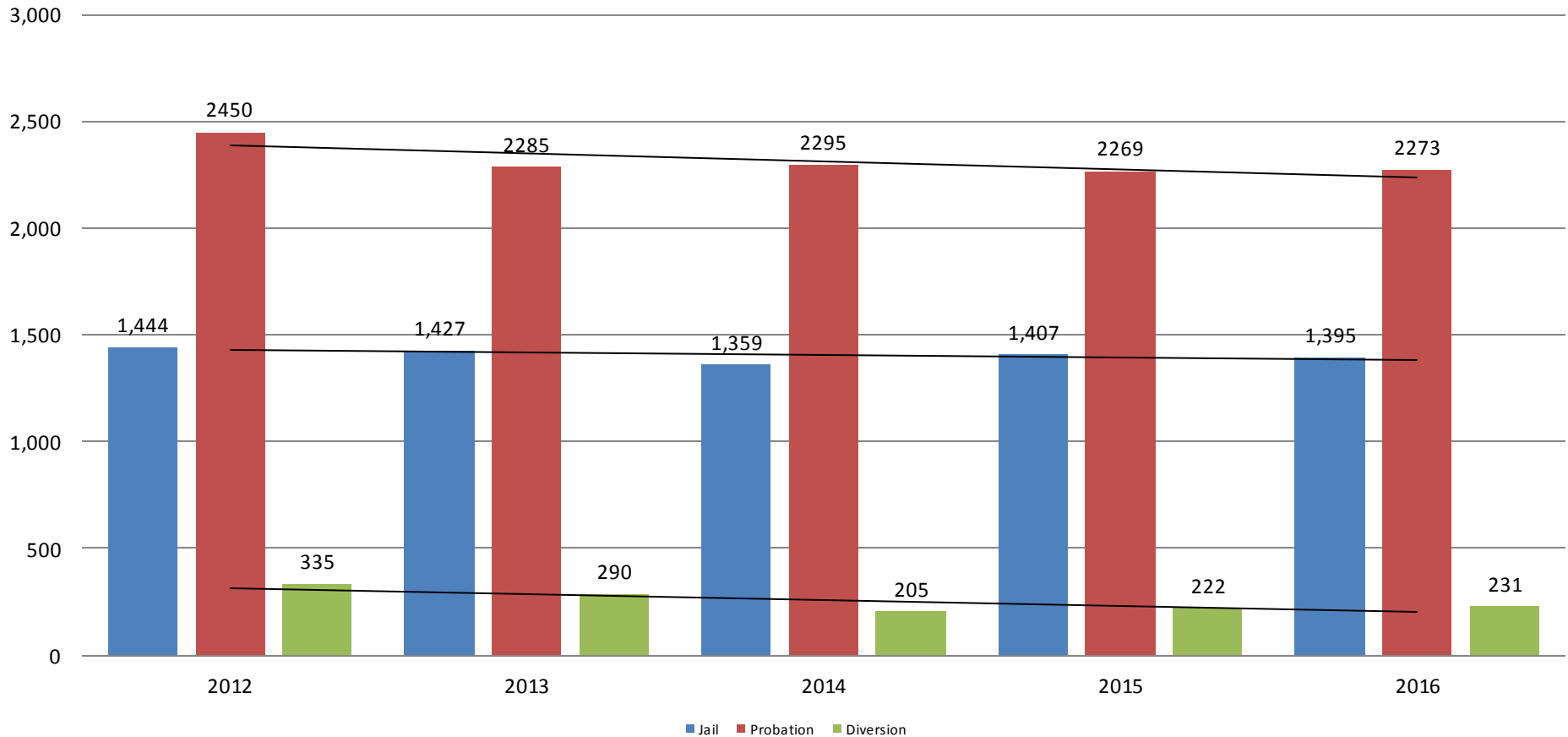


Jail includes individuals in booking, detention, work release and out-of county (combined)



Correlation: Total & District Court Programs

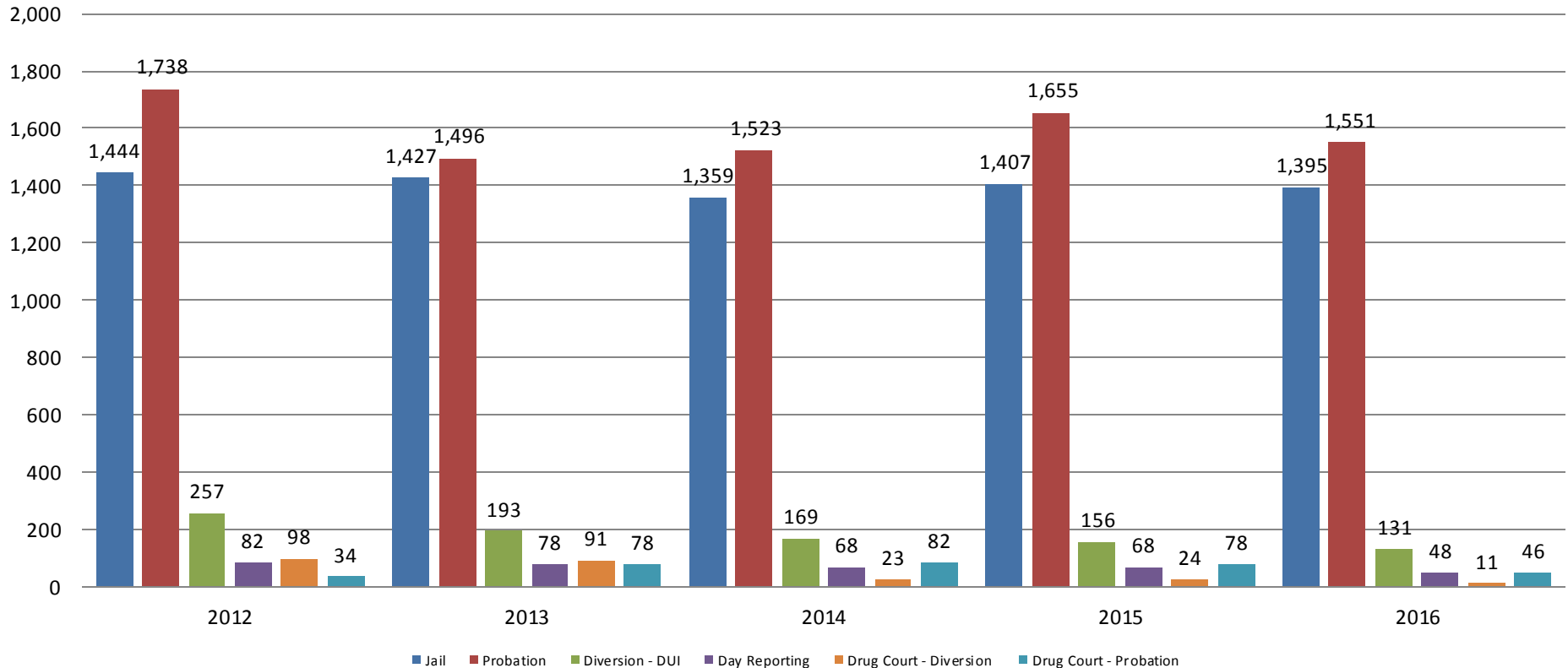
Total Annual ADP: 2012 - Present



Jail includes individuals in booking, detention, work release and out-of county (combined)

Correlation: Total & City of Wichita / Municipal Court Programs

Total Annual ADP: 2012 - present

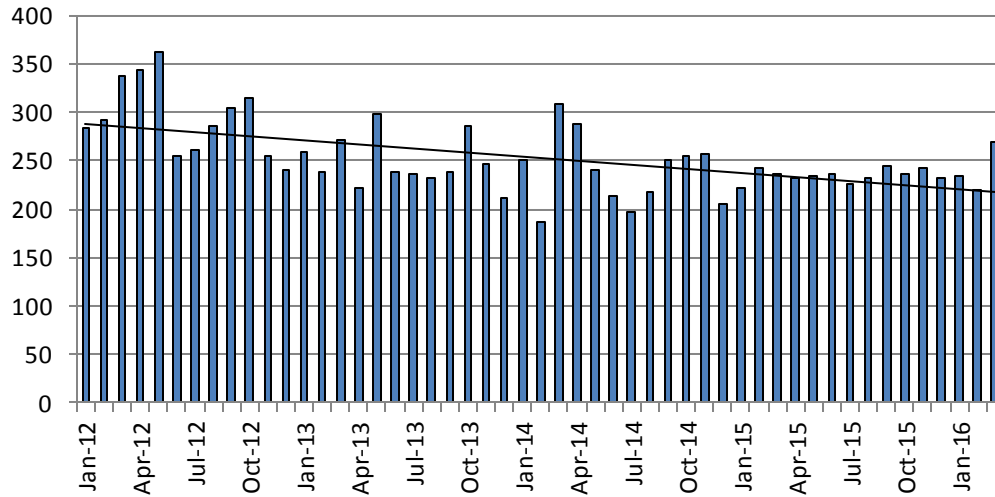


Jail includes individuals in booking, detention, work release and out-of county (combined)



Juvenile

JIAC Intakes: 2012 - present



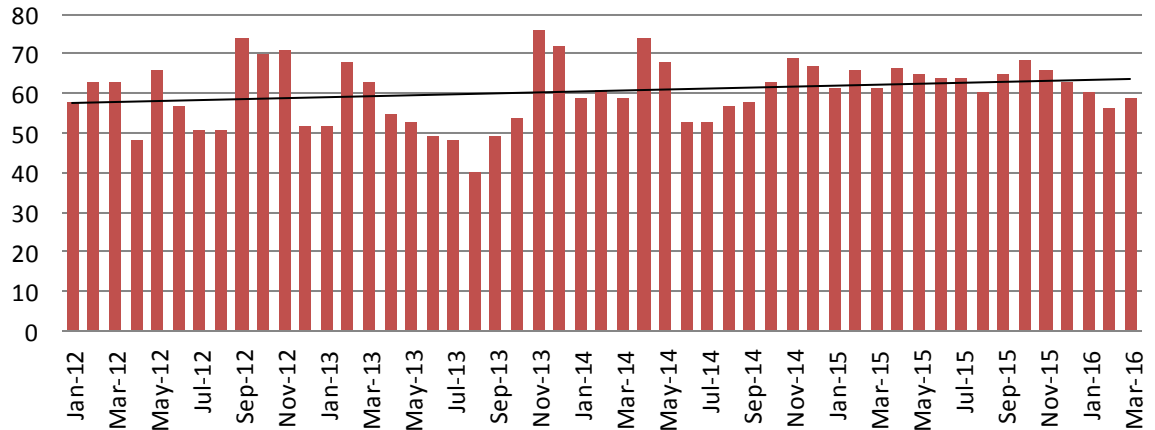
March	March YTD Average
2013 = 272	2013 = 256
2014 = 309	2014 = 249
2015 = 236	2015 = 233
2016 = 270	2016 = 241

(data obtained from SG CO Dept. of Corrections)

JDF ADP: 2012 - present

March	March YTD Avg.
2013 = 63	2013 = 61
2014 = 59	2014 = 60
2015 = 61	2015 = 63
2016 = 59	2016 = 59

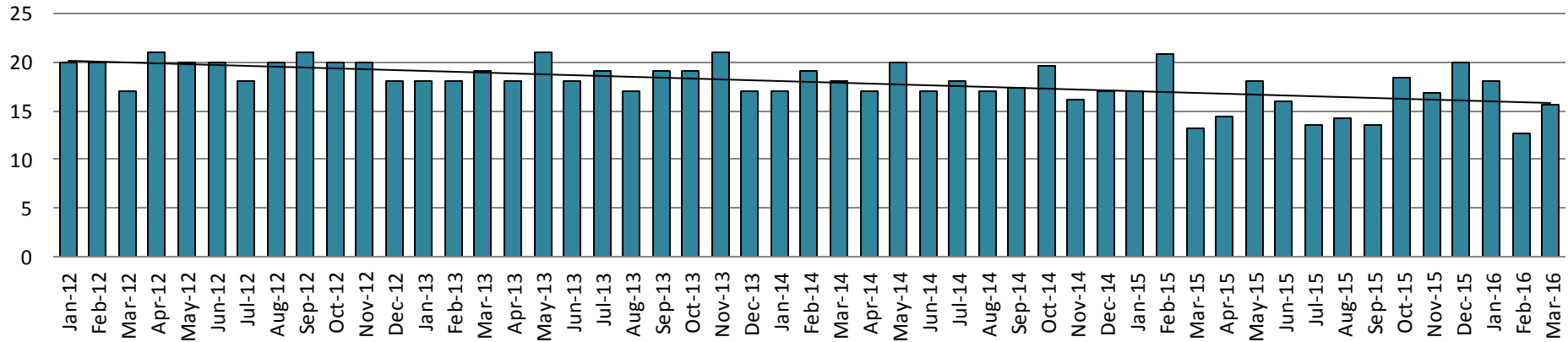
(data obtained from SG CO Dept. of Corrections)



Juvenile Detention Alternatives

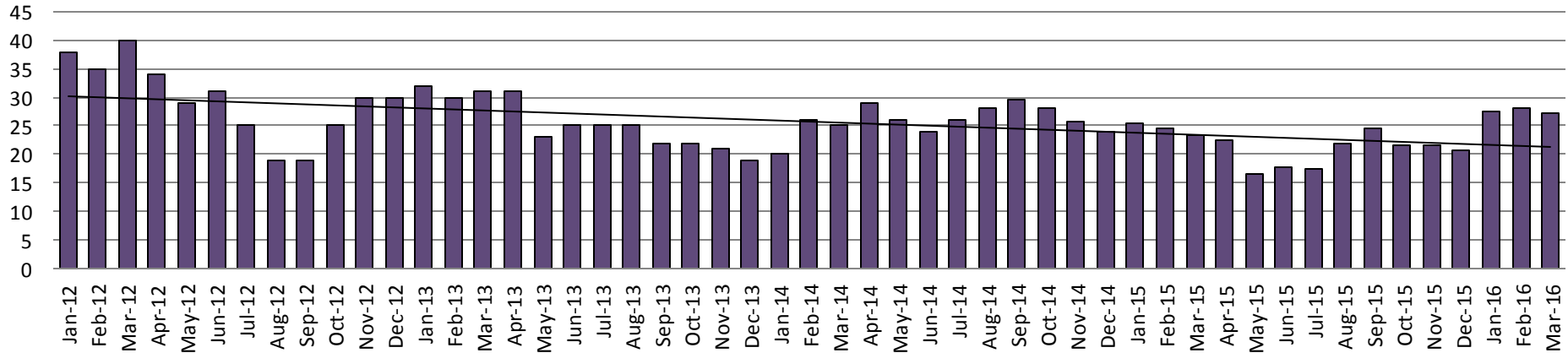
Juvenile Residential Facility (JRF)

ADP: 2012 - present



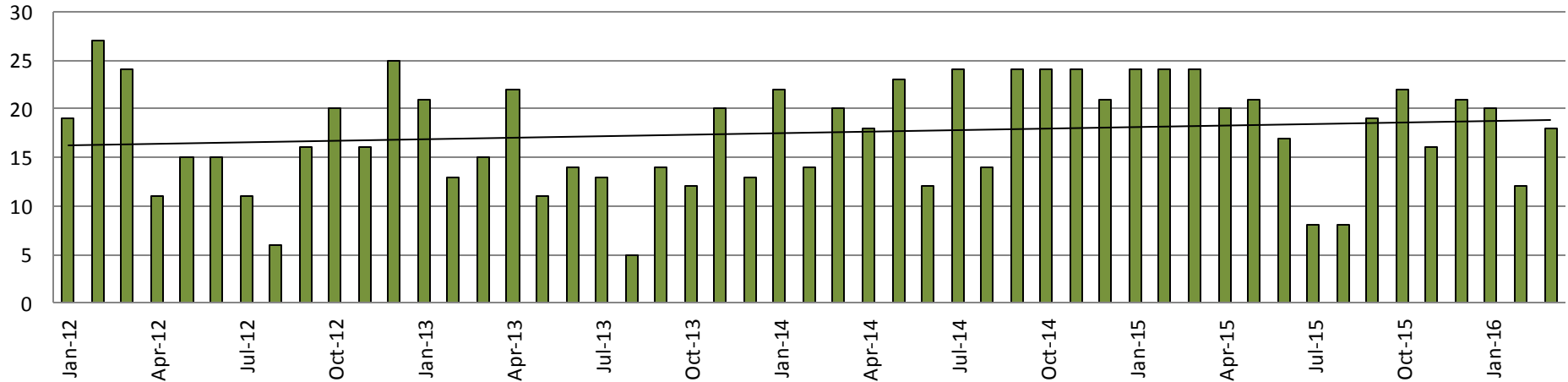
Home-Based Supervision

ADP: 2012 - present

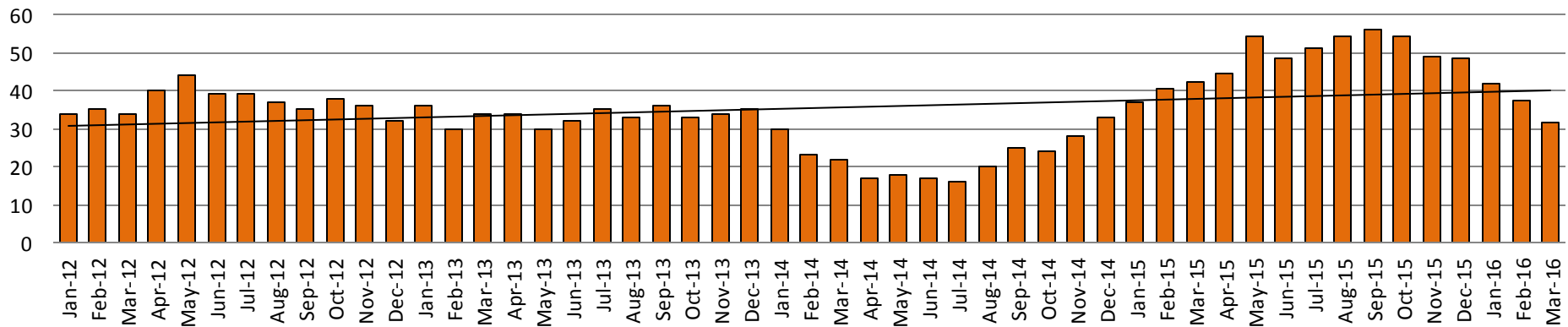


Juvenile Detention Alternatives

Weekend Alternative Detention Program 2012 - present



Detention Advocacy Case Management Services ADP: 2012 - present



Juvenile Detention Services

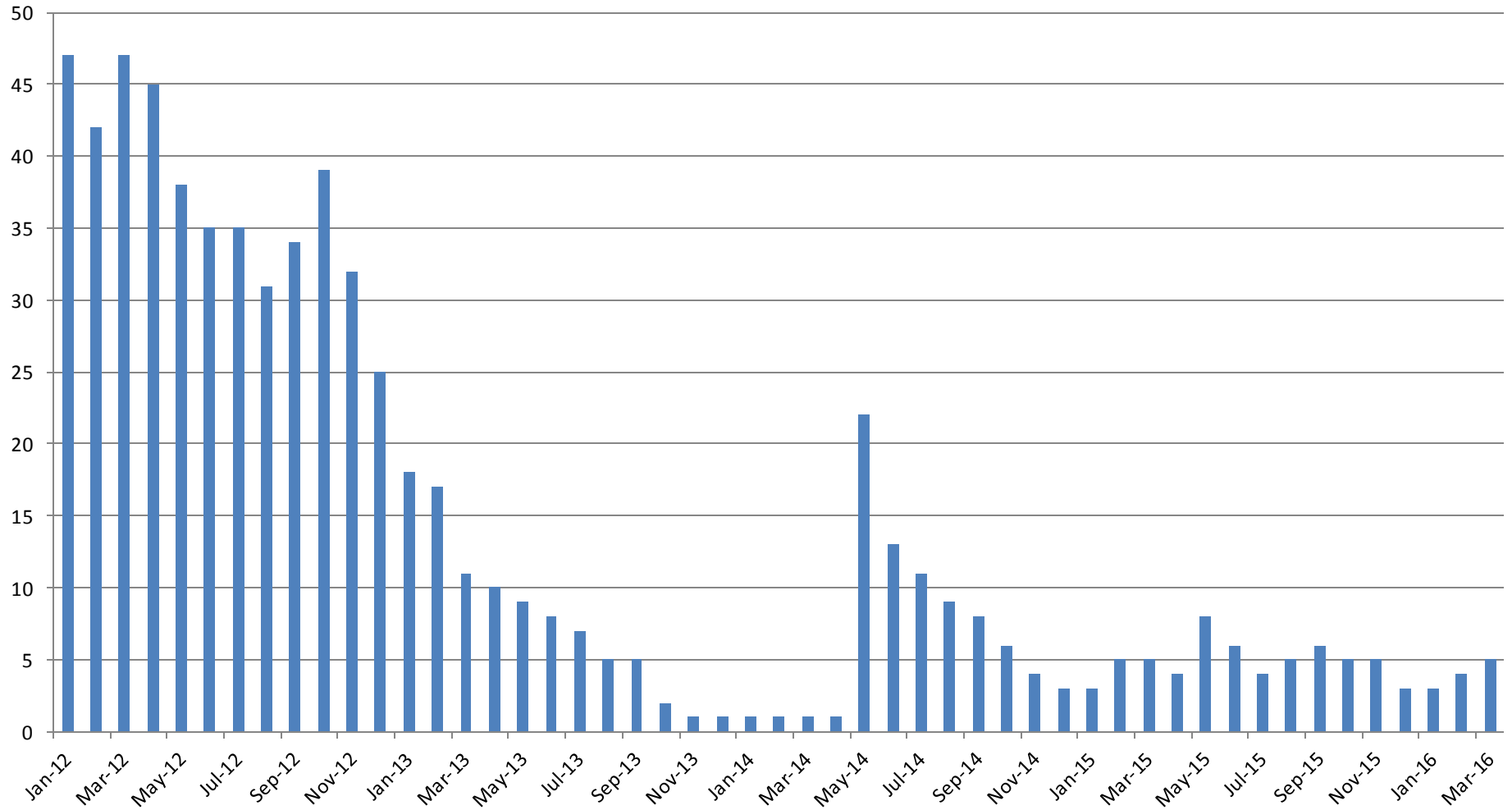
March ADP	2013	2014	2015	2016
Juvenile Detention Facility	63	59	61	59
Juvenile Residential Facility	19	18	13	16
Home Based Supervision	31	25	23	27
Detention Advocacy Case Management Services	34	22	42	32
Weekend Alternative Detention Program (total)	15	20	24	18

March YTD AVERAGE	2013	2014	2015	2016
Juvenile Detention Facility	61	60	63	59
Juvenile Residential Facility	18	18	17	15
Home Based Supervision	31	24	25	28
Detention Advocacy Case Management Services	33	25	40	37
Weekend Alternative Detention Program	16	19	24	17



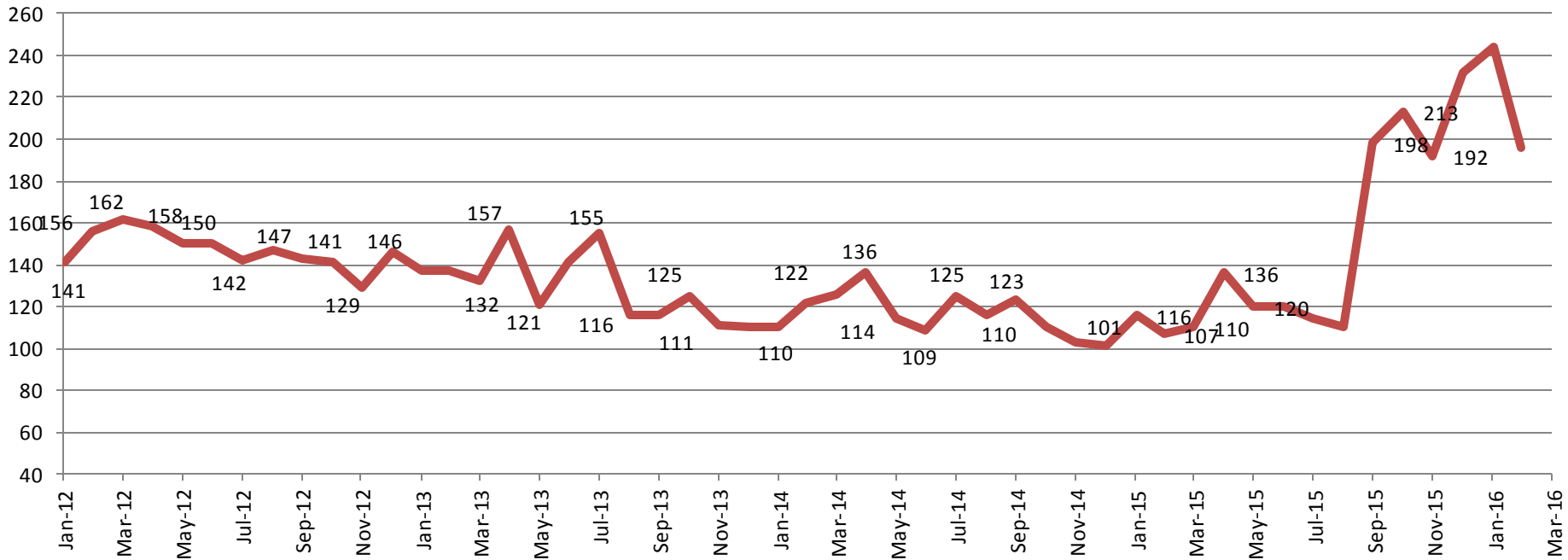
Monthly Jail Snapshot: March 31, 2015

BICE Holds 2012-Present



Monthly Jail Snapshot: March 31, 2015

Felony Commitments: February 2012 - present



March:

2013 = 137

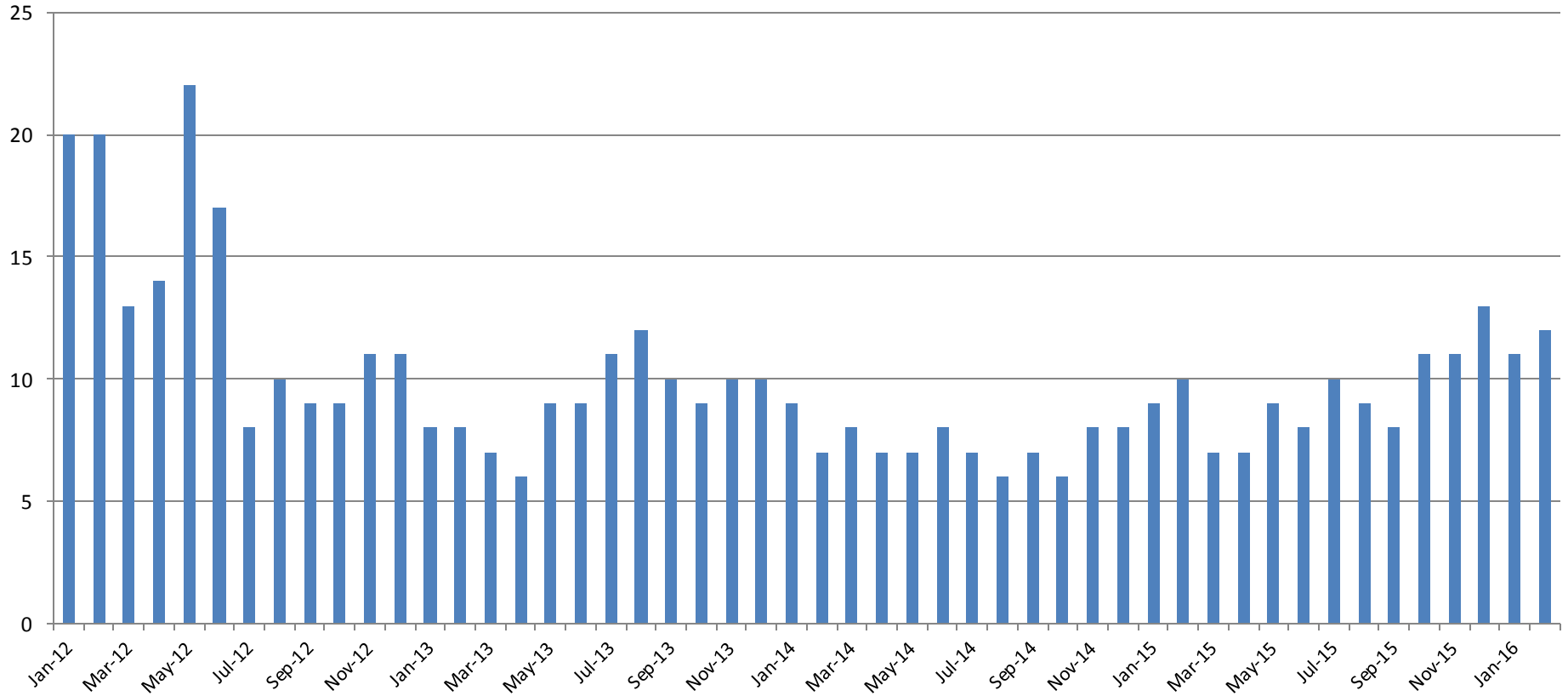
2014 = 122

2015 = 107

2016 = 196

(data obtained from SG CO DIO)

Journal Entry Completion (Average Days) January 2013-Present



This data is always reported a month behind

