

Criminal Justice Coordinating Council

Population Report & Program Trends

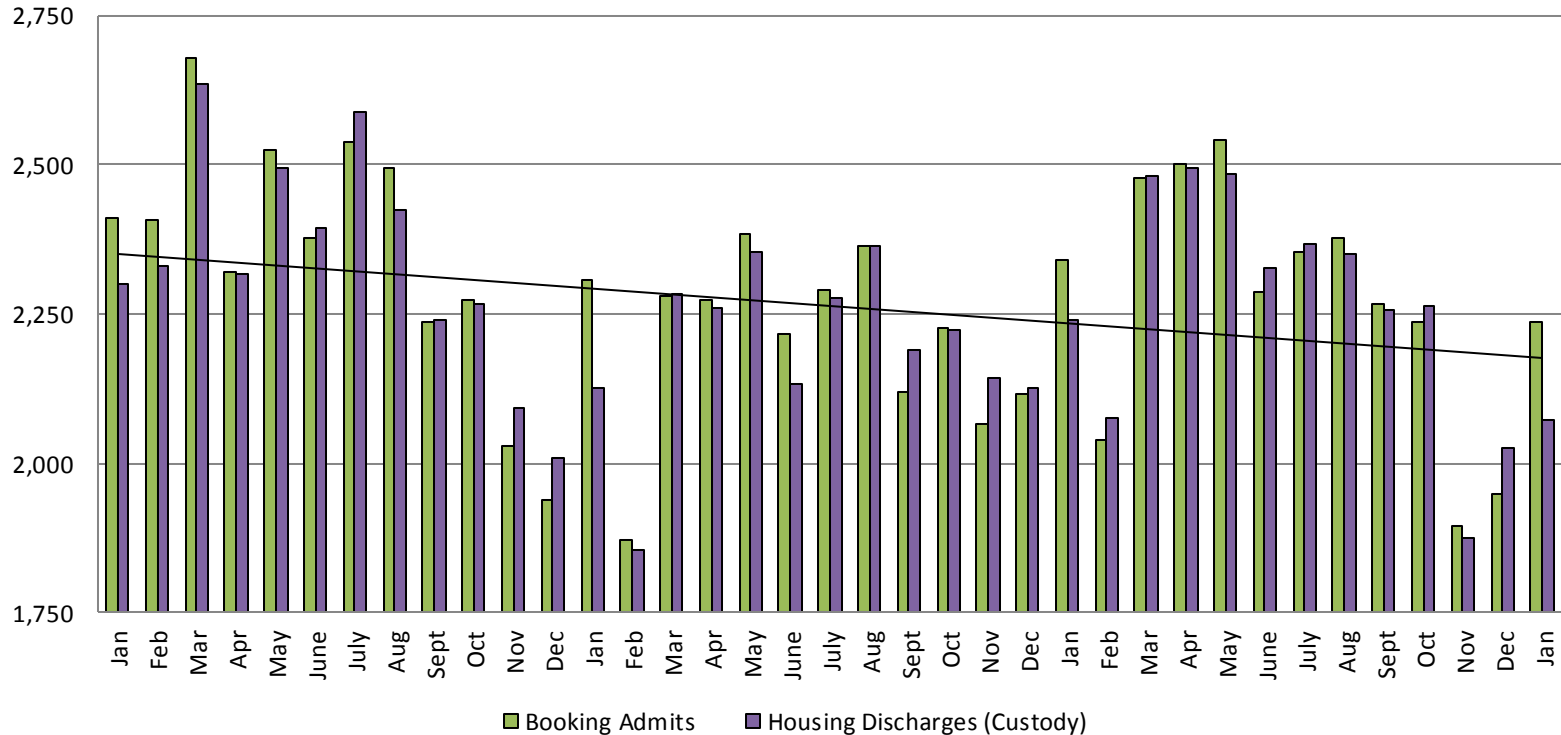
February 25, 2015



Sedgwick County...
working for you

Detention Facility

Booking Admits & Housing Discharges from Custody January 2012 - Present



Housing Discharges for January

2013 = 2,125
 2014 = 2,241
 2015 = 2,072
 2016 = 2,157

Bookings for January

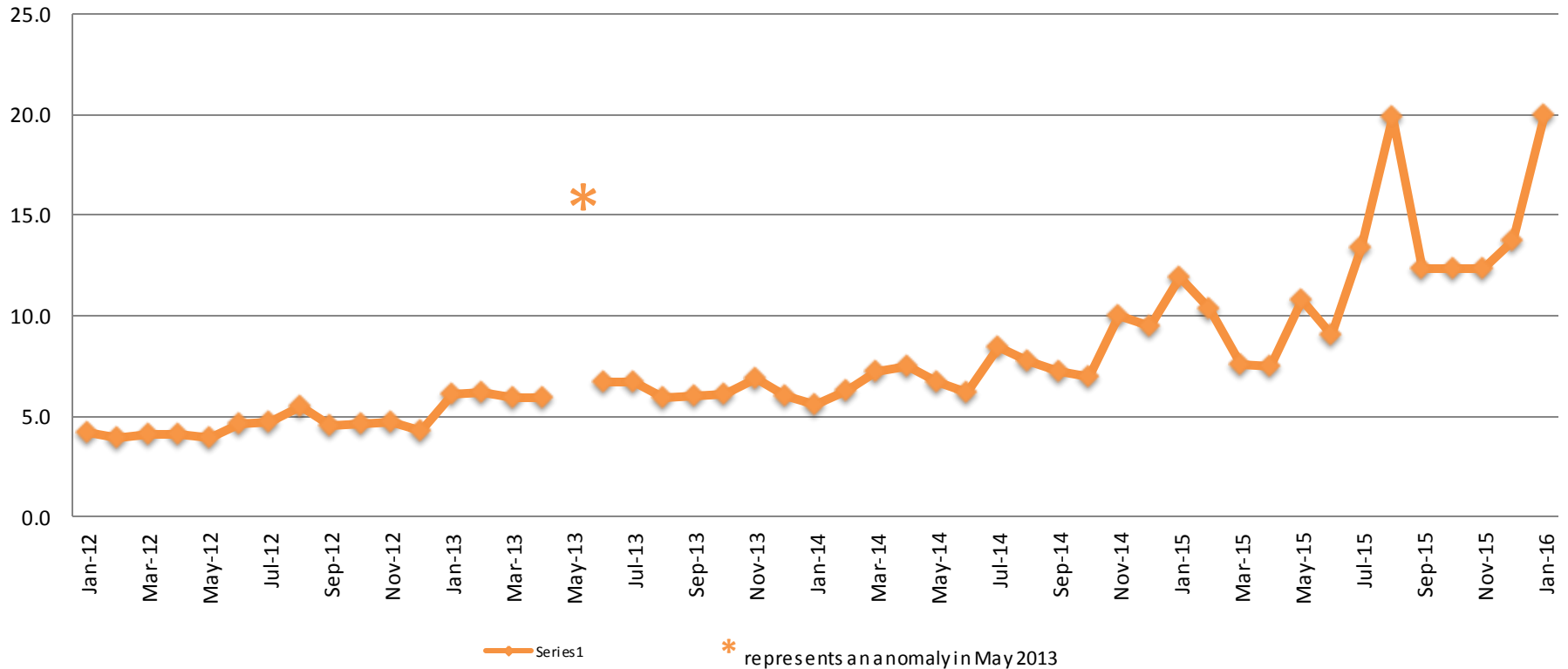
2013 = 2,308
 2014 = 2,340
 2015 = 2,238
 2016 = 2,293

(data obtained from detention facility)



Average Length of Stay: Booking (Hours)

January 2012 - Present



January

2013 = 6.1
 2014 = 5.6
 2015 = 11.9
 2016 = 20.0

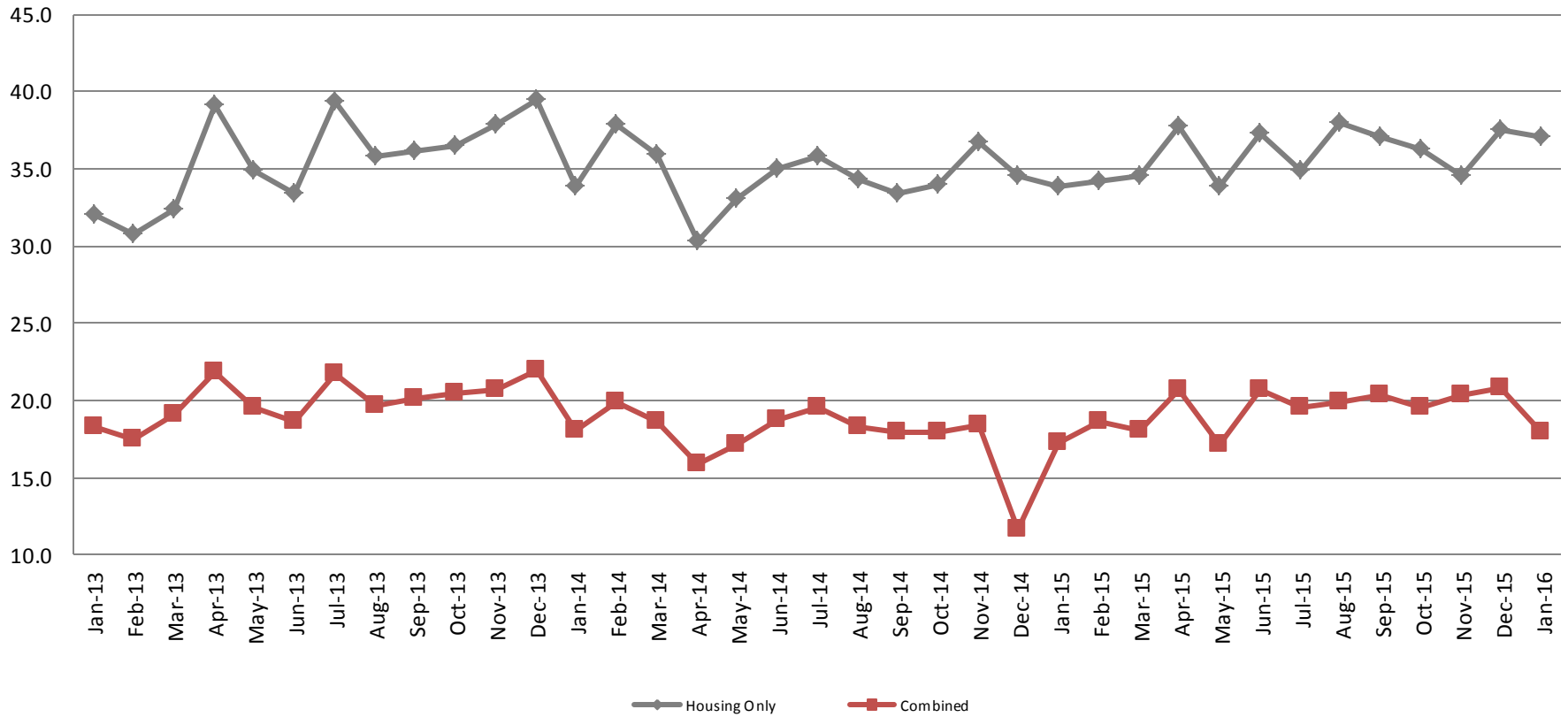
January YTD Avg.

2013 = 6.1
 2014 = 5.6
 2015 = 11.9
 2016 = 20.0

(data obtained from detention facility)

Average Length of Stay: Housing & Combined (Days)

January 2013 - Present



January Housing

2012 = 26.1
 2013 = 32.0
 2014 = 33.9
 2015 = 33.8
 2016 = 37.0

January Housing YTD Avg.

2012 = 26.1
 2013 = 32.0
 2014 = 33.9
 2015 = 33.8
 2016 = 37.0

January Combined

2012 = 15.9
 2013 = 18.3
 2014 = 18.1
 2015 = 17.3
 2016 = 18.0

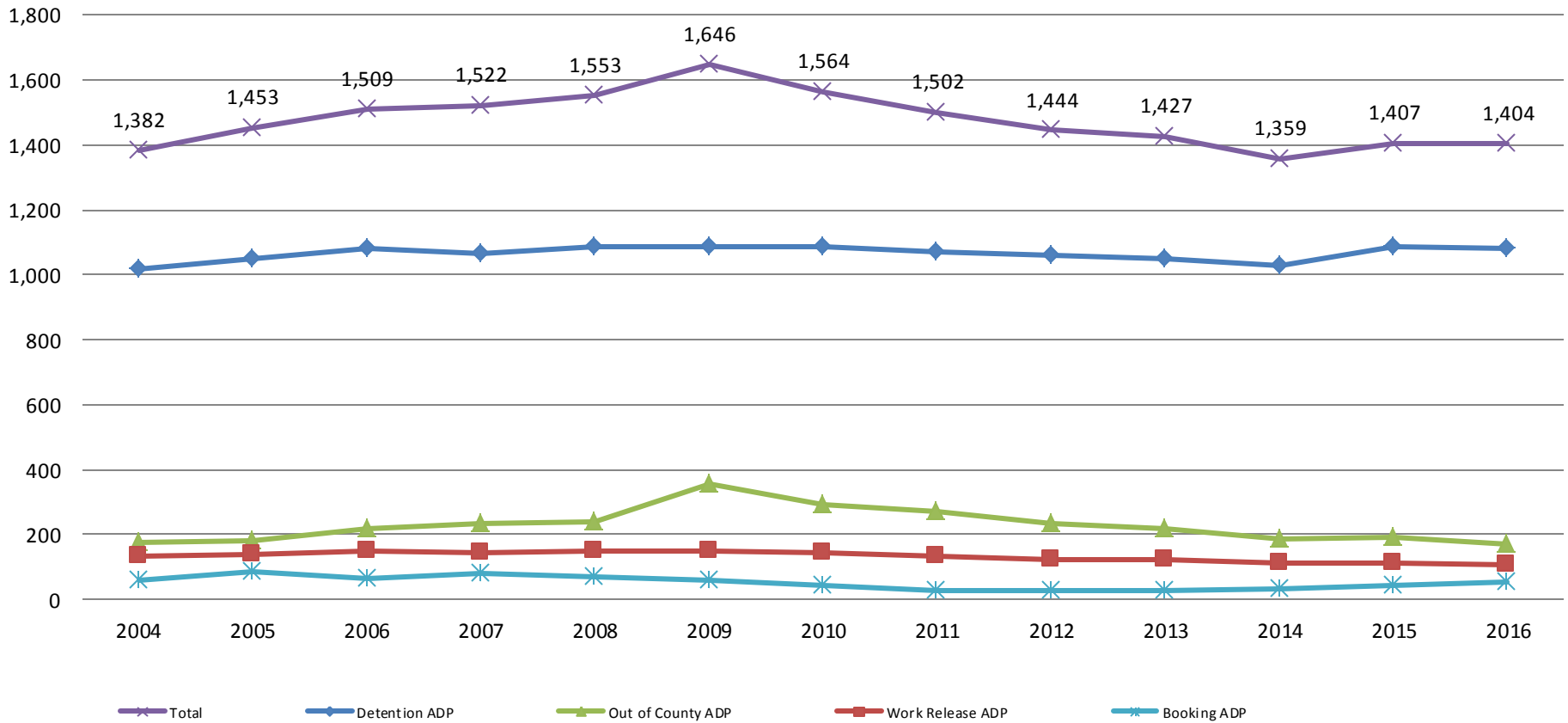
January Combined YTD Avg.

2012 = 15.9
 2013 = 18.3
 2014 = 18.1
 2015 = 17.3
 2016 = 18.0

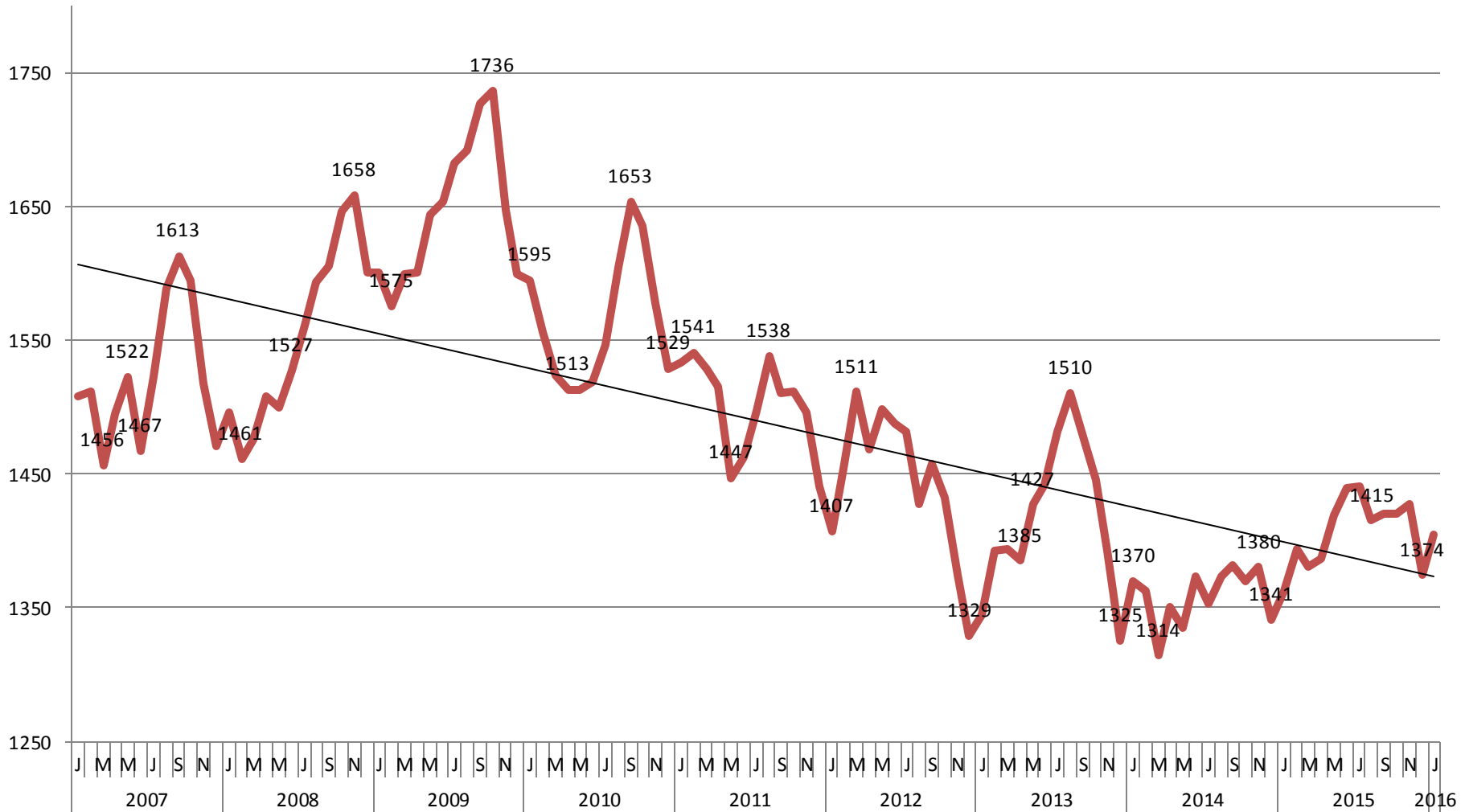


Jail: Annual Average Daily Population (ADP)

TRENDS: Booking, Detention, Work Release, & Out of County Annual ADP: 2004 - present



TOTAL MONTHLY ADP: JAIL (Booking, Detention Facility, Work Release, & Out of County) 2007 - present



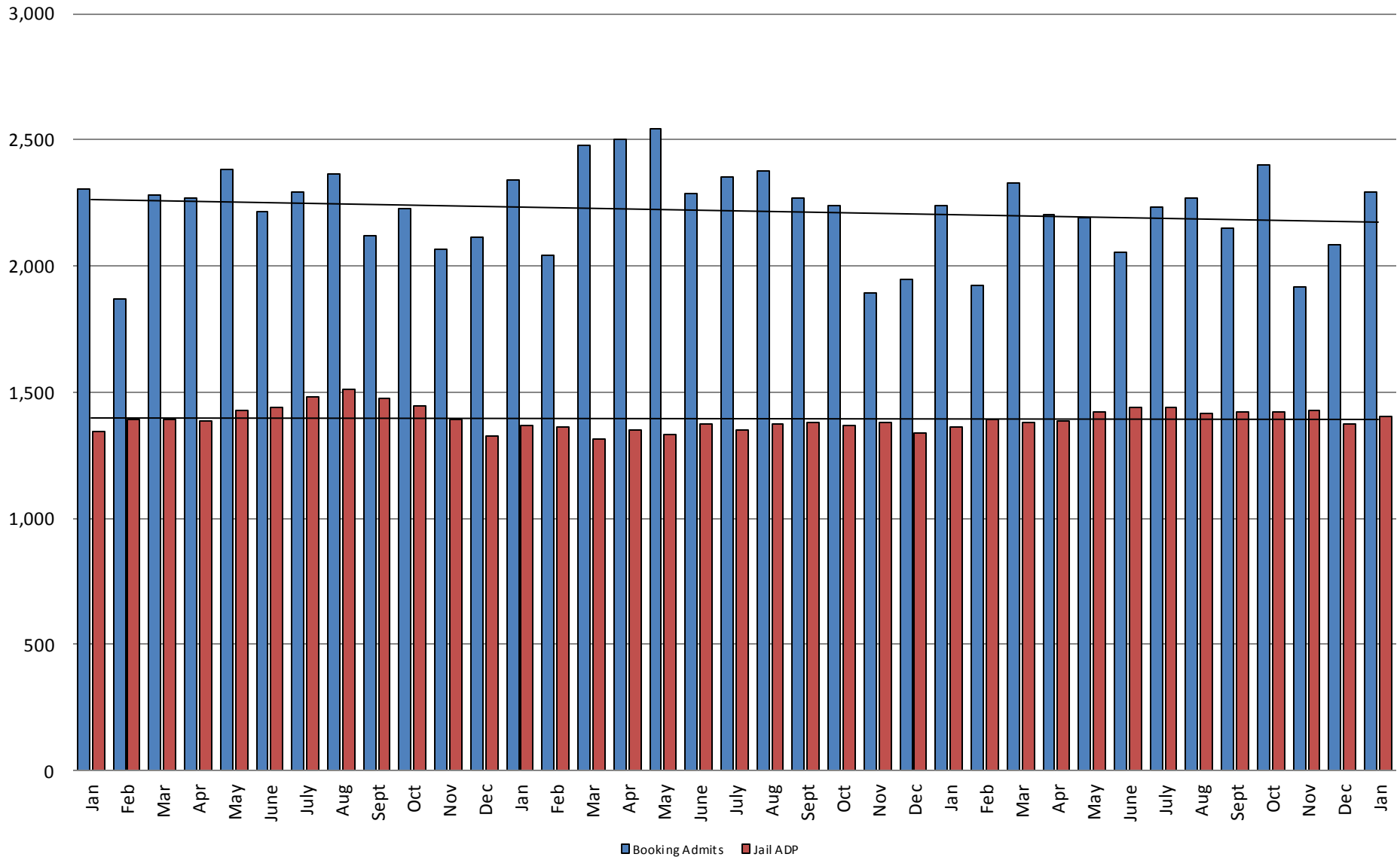
This slide shows total monthly ADP for individuals in booking, detention, work release and out-of county (combined)



*Sedgwick County...
working for you*

(data obtained from detention facility)

Booking Admits & Total Monthly ADP (Jail): 2013 - present



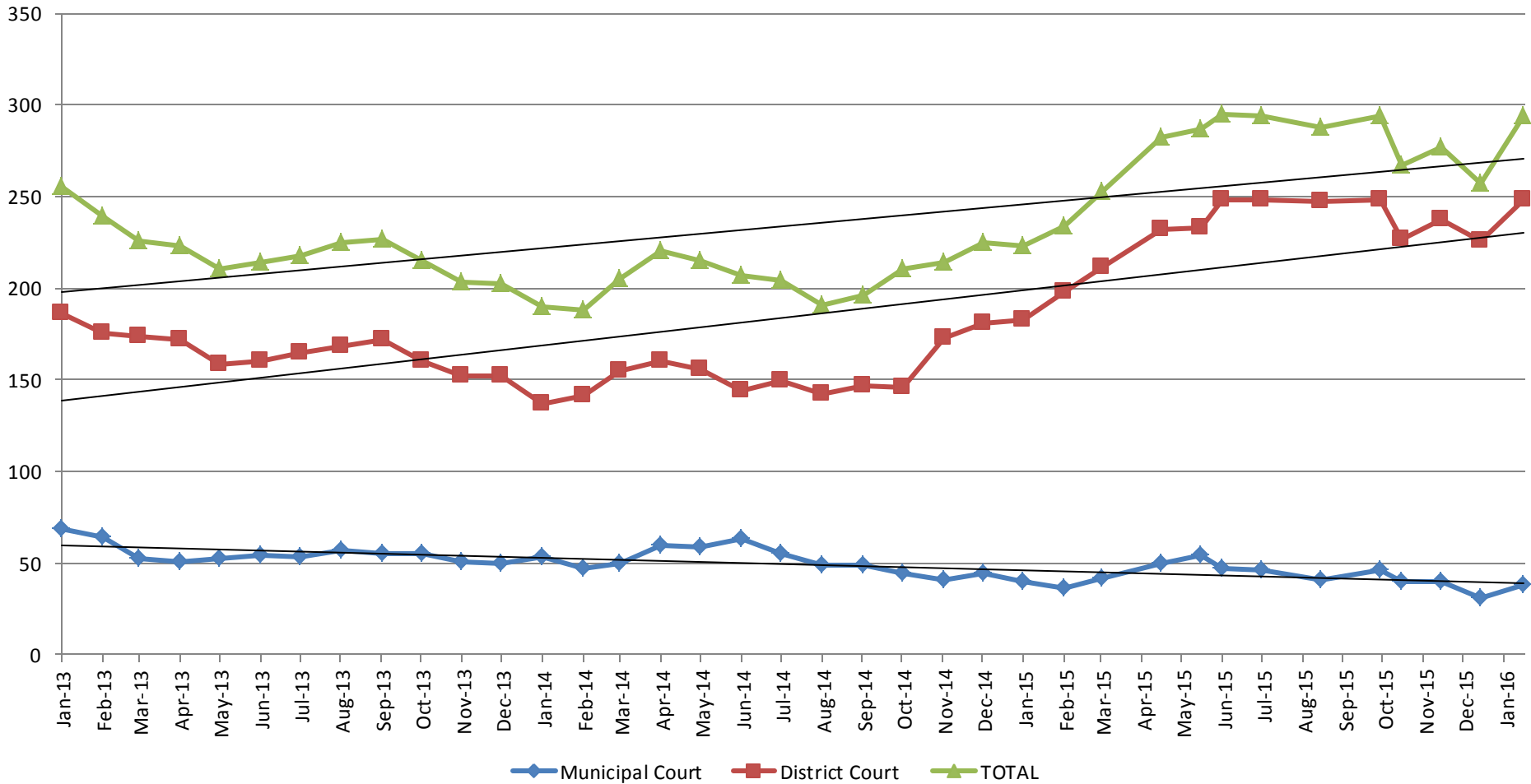
Jail includes individuals in booking, detention, work release and out-of county (combined)

(data obtained from detention facility)



Sedgwick County...
working for you

Pretrial Services Program (PSP) Monthly ADP: January 2013 - Present



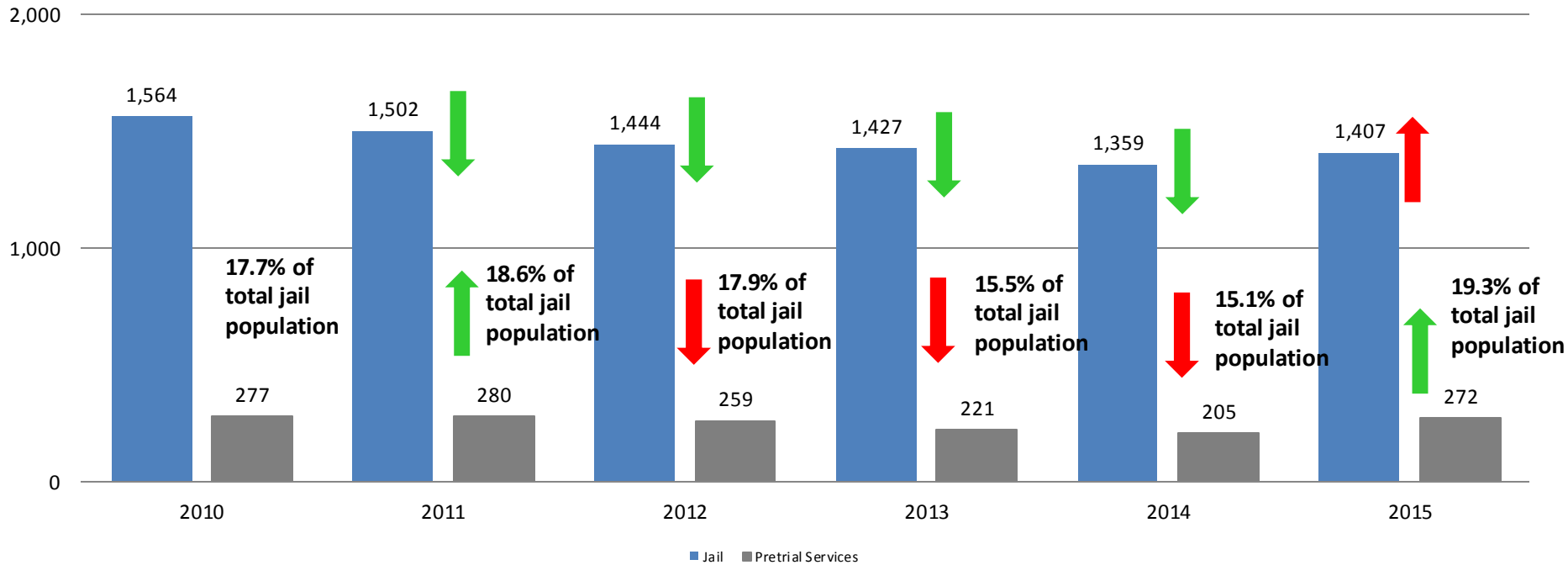
January	2012	2013	2014	2015	2016	January YTD Avg.	2012	2013	2014	2015	2016
Municipal Court	52	69	53	70	38	Municipal Court	52	69	53	70	38
District Court	210	186	137	153	248	District Court	210	186	137	153	248
TOTAL	262	255	190	223	294	TOTAL	262	255	190	223	294



(data obtained from Pretrial Services)

Correlation: Total & PSP

Total Annual ADP: 2010 - 2015



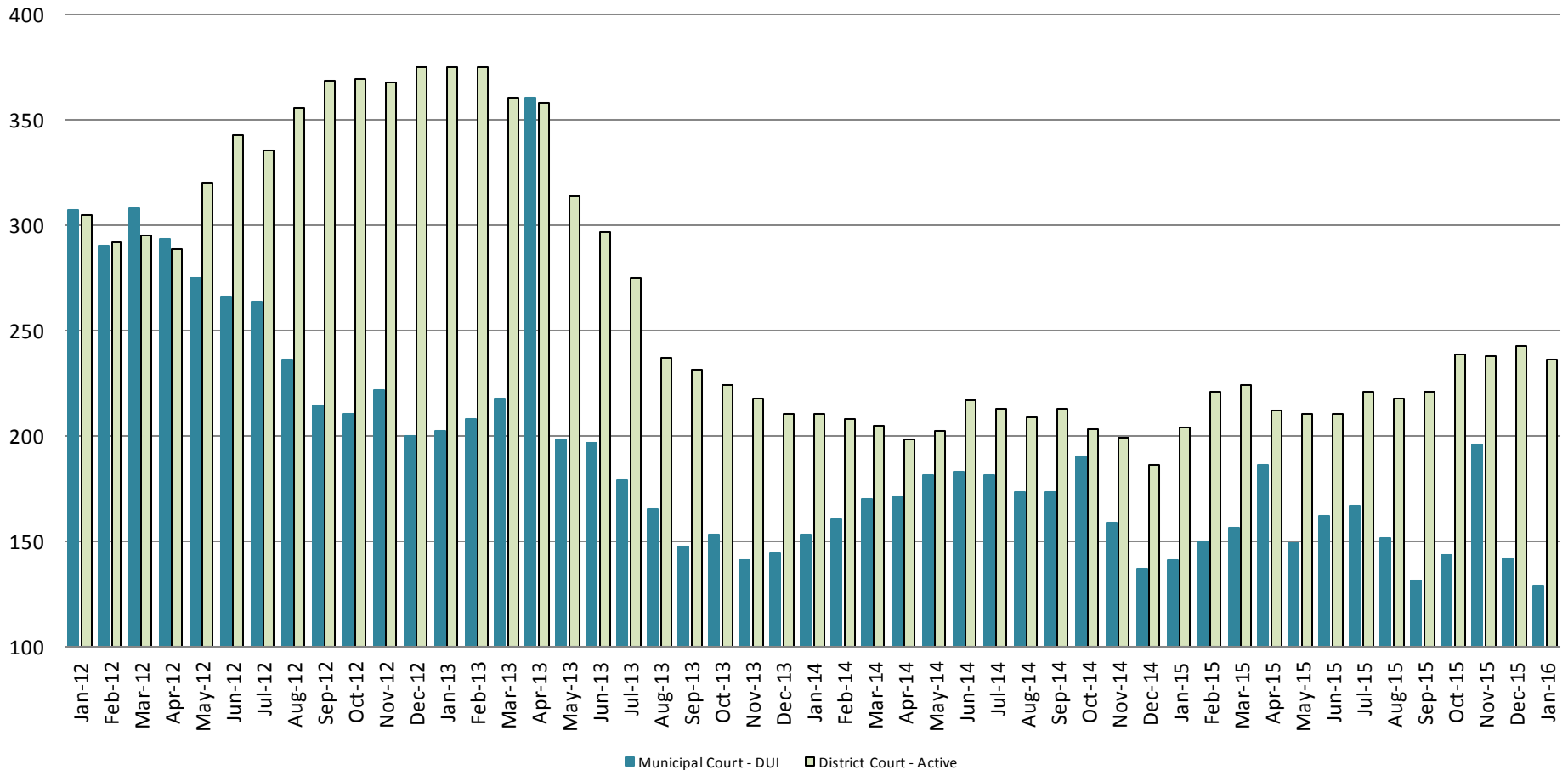
Arrows represent the overall increase/decrease of the population from year to year

Jail includes individuals in booking, detention, work release and out-of county (combined)



Diversion - Active Caseload

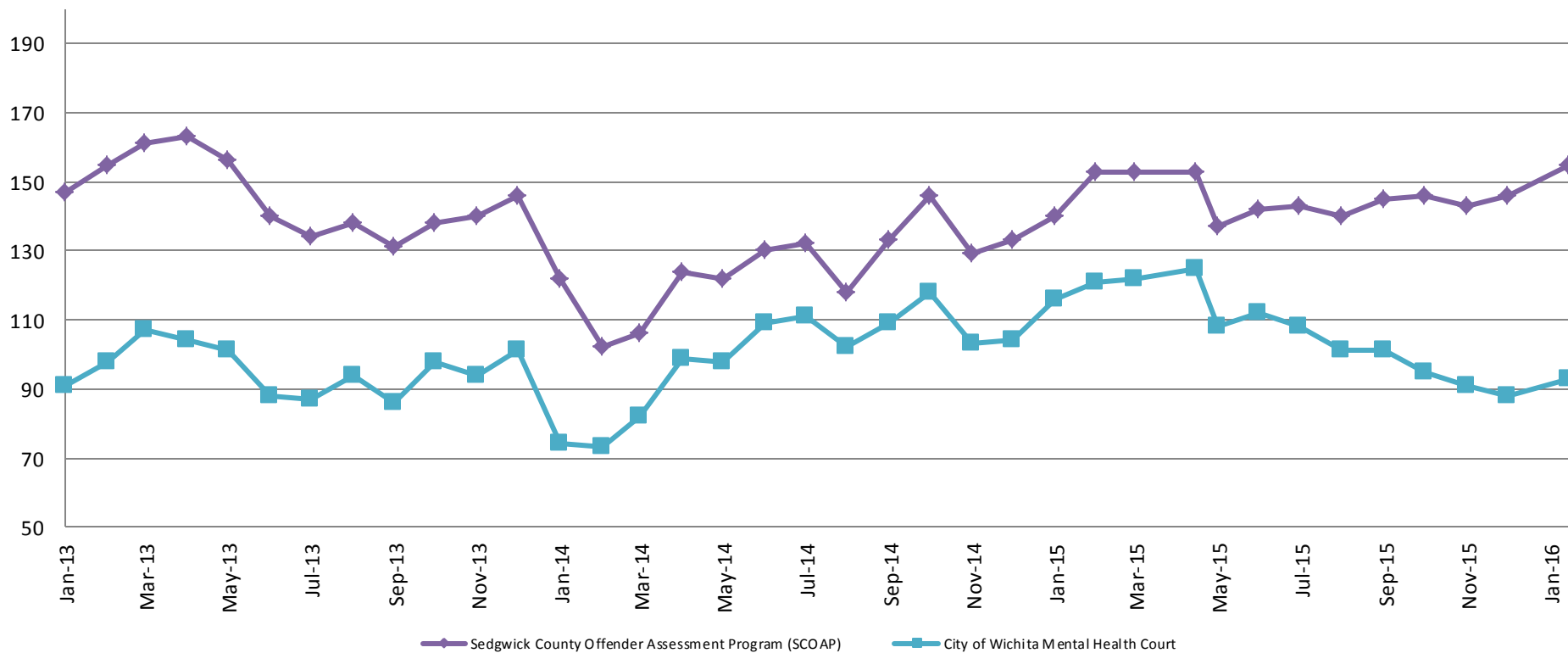
January 2012 - Present



<u>January</u>	<u>2012</u>	<u>2013</u>	<u>2014</u>	<u>2015</u>	<u>2016</u>
Municipal Court- DUI	307	202	153	141	129
District Court- Active	305	375	210	204	236

<u>January</u>	<u>2012</u>	<u>2013</u>	<u>2014</u>	<u>2015</u>	<u>2016</u>
Municipal Court- DUI	307	202	153	141	129
District Court- Active	305	375	210	204	236

Mental Health - ADP 2013 - present



January:	2012	2013	2014	2015	2016
SCOAP	129	147	122	140	155
CoW – MH Court	94	91	74	116	93

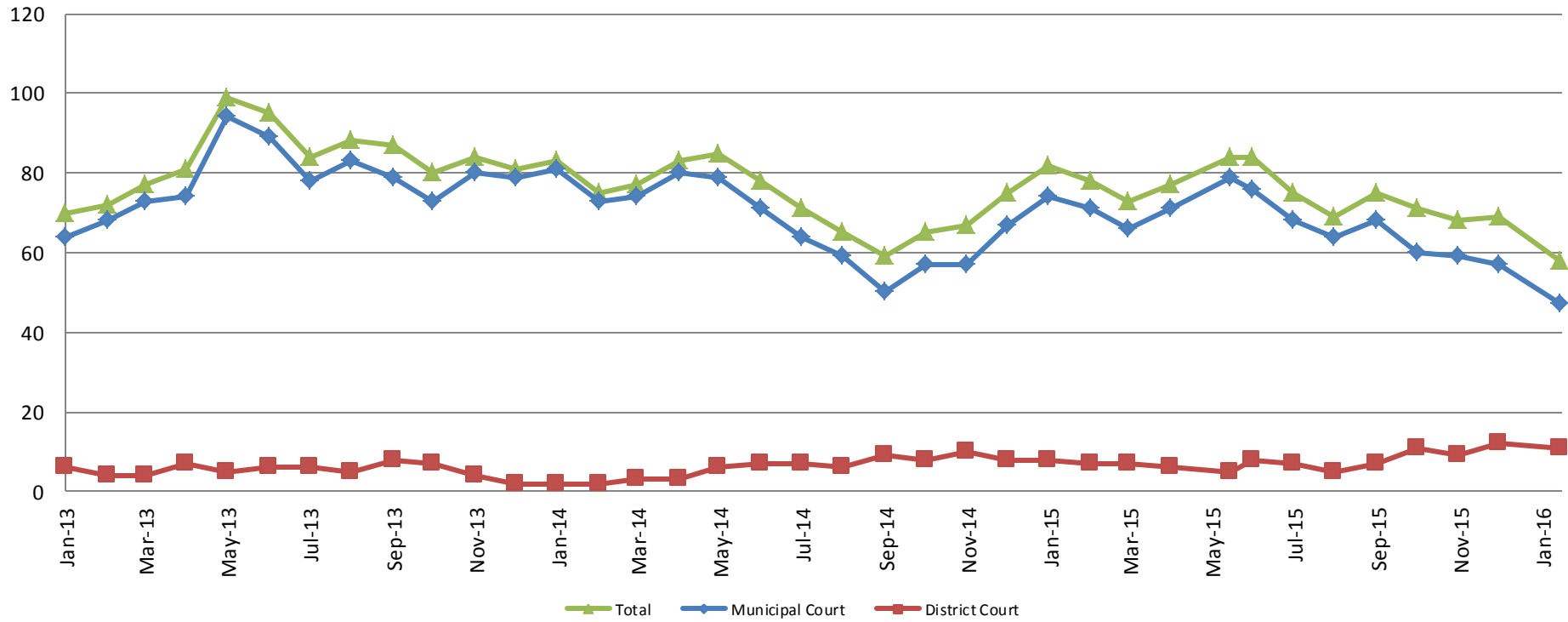
January YTD Average:	2012	2013	2014	2015	2016
SCOAP	129	147	122	140	155
CoW – MH Court	94	91	74	116	93



(data obtained from COMCARE)

Day Reporting - Active Caseload

2013-present



January	2012	2013	2014	2015	2016
Municipal Court	71	64	81	74	47
District Court	16	6	2	8	11
TOTAL	87	70	83	82	58

January YTD Avg.	2012	2013	2014	2015	2016
Municipal Court	71	64	81	74	47
District Court	16	6	2	8	11
TOTAL	87	70	83	82	58

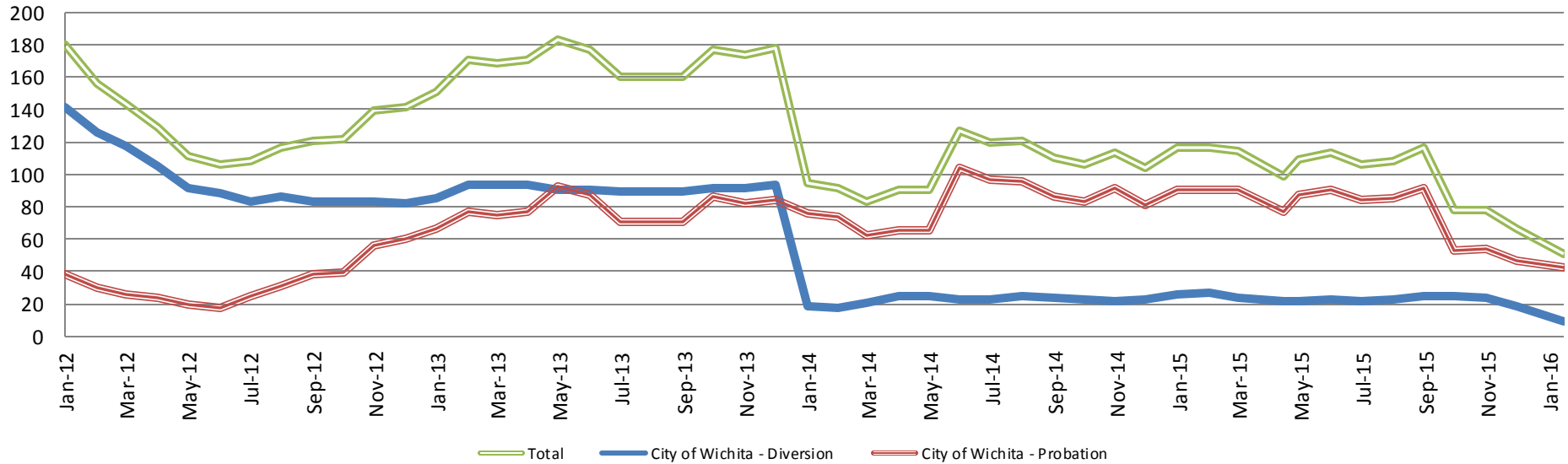


Sedgwick County...
working for you

(data obtained from Pretrial Services)

Drug Court

Drug Court - City of Wichita ADP: 2012 - present



January - CoW Diversion

2013 = 85
2014 = 19
2015 = 26
2016 = 9

January YTD Avg.

2013 = 85
2014 = 19
2015 = 26
2016 = 9

January - CoW Probation

2013 = 66
2014 = 76
2015 = 90
2016 = 42

January YTD Avg.

2013 = 76
2014 = 76
2015 = 76
2016 = 42

January - CoW Total

2013 = 151
2014 = 95
2015 = 116
2016 = 51

January YTD Avg.

2013 = 151
2014 = 95
2015 = 116
2016 = 51

(data obtained from CoW)



Sedgwick County...
working for you

Drug Court - Sedgwick County ADP: 2012 - present



January - SG CO

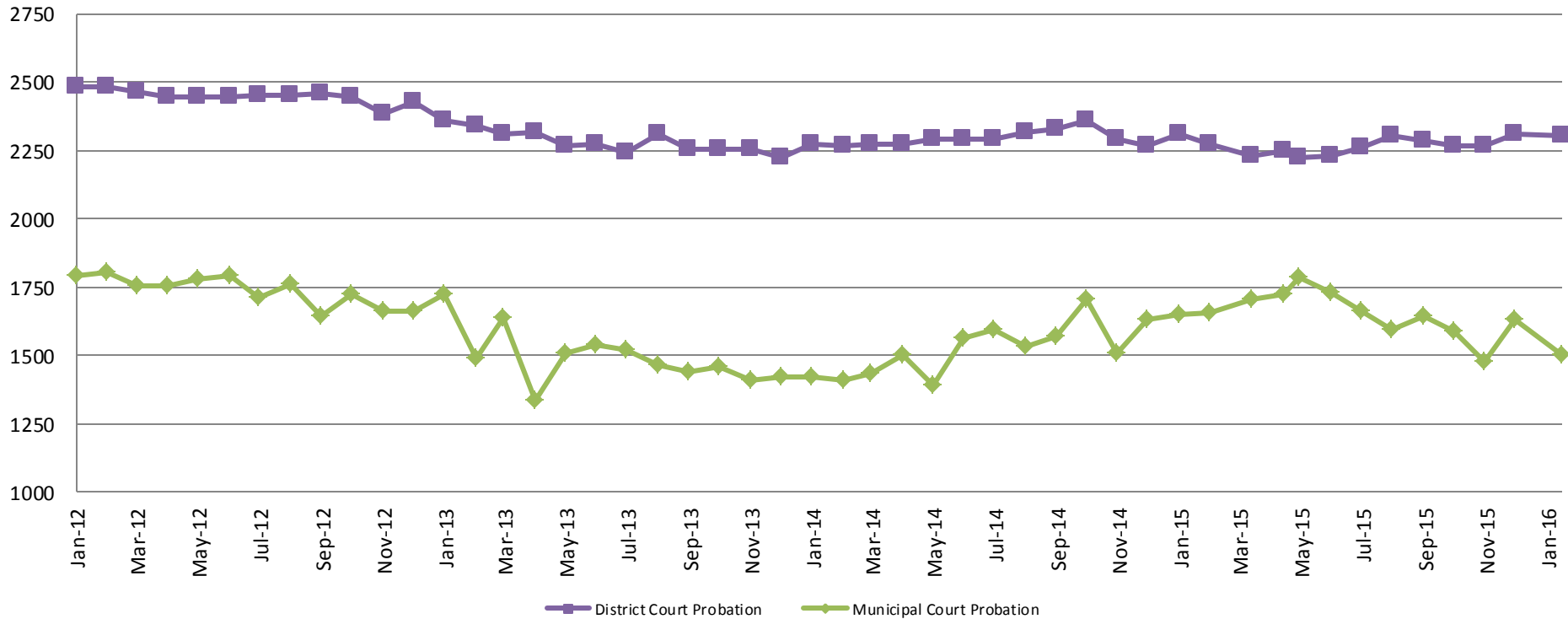
2012 = 102
2013 = 100
2014 = 98
2015 = 93
2016 = 108

January YTD Avg.

2012 = 102
2013 = 100
2014 = 98
2015 = 93
2016 = 108

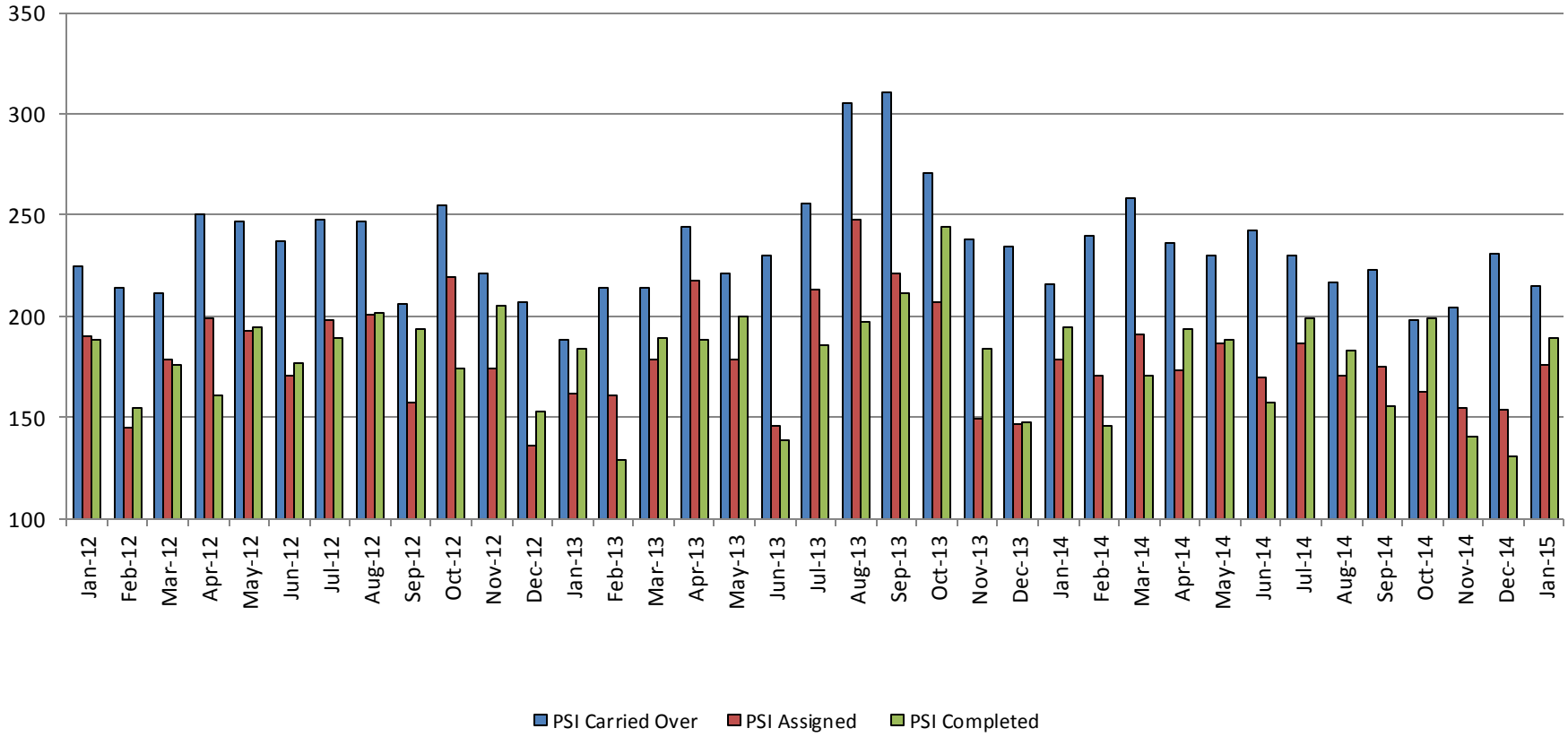


Probation - Active Caseloads 2012 - present



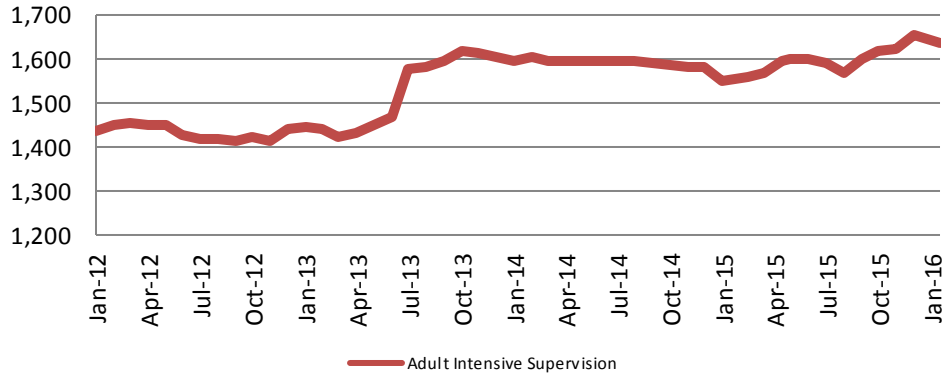
January:	2012	2013	2014	2015	2016
District Court	2,482	2,363	2,272	2,313	2,303
Municipal Court	1,790	1,726	1,420	1,652	1,501
January YTD Avg.	2012	2013	2014	2015	2016
District Court	2,482	2,363	2,272	2,313	2,303
Municipal Court	1,790	1,726	1,420	1,652	1,501

District Court Probation: Pre-Sentence Investigation 2012 - present



Community Corrections

Adult Intensive Supervision Probation (AISP) ADP 2012 - present



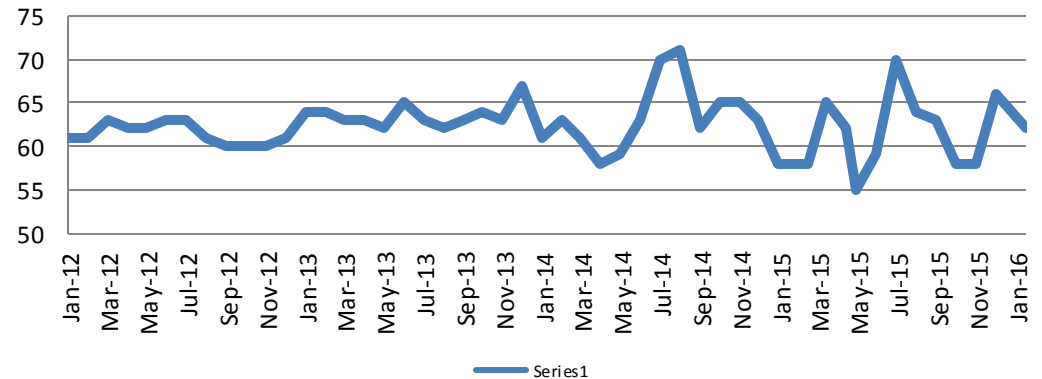
<u>January</u>	<u>January YTD Avg.</u>
2013 = 1,443	2013 = 1,443
2014 = 1,596	2014 = 1,596
2015 = 1,550	2015 = 1,550
2016 = 1,634	2016 = 1,634

(data obtained from SG CO Dept. of Corrections)

*KDOC changed population count to include drug court, residential and AISP beginning July 2013.

Adult Residential: ADP 2012 - present

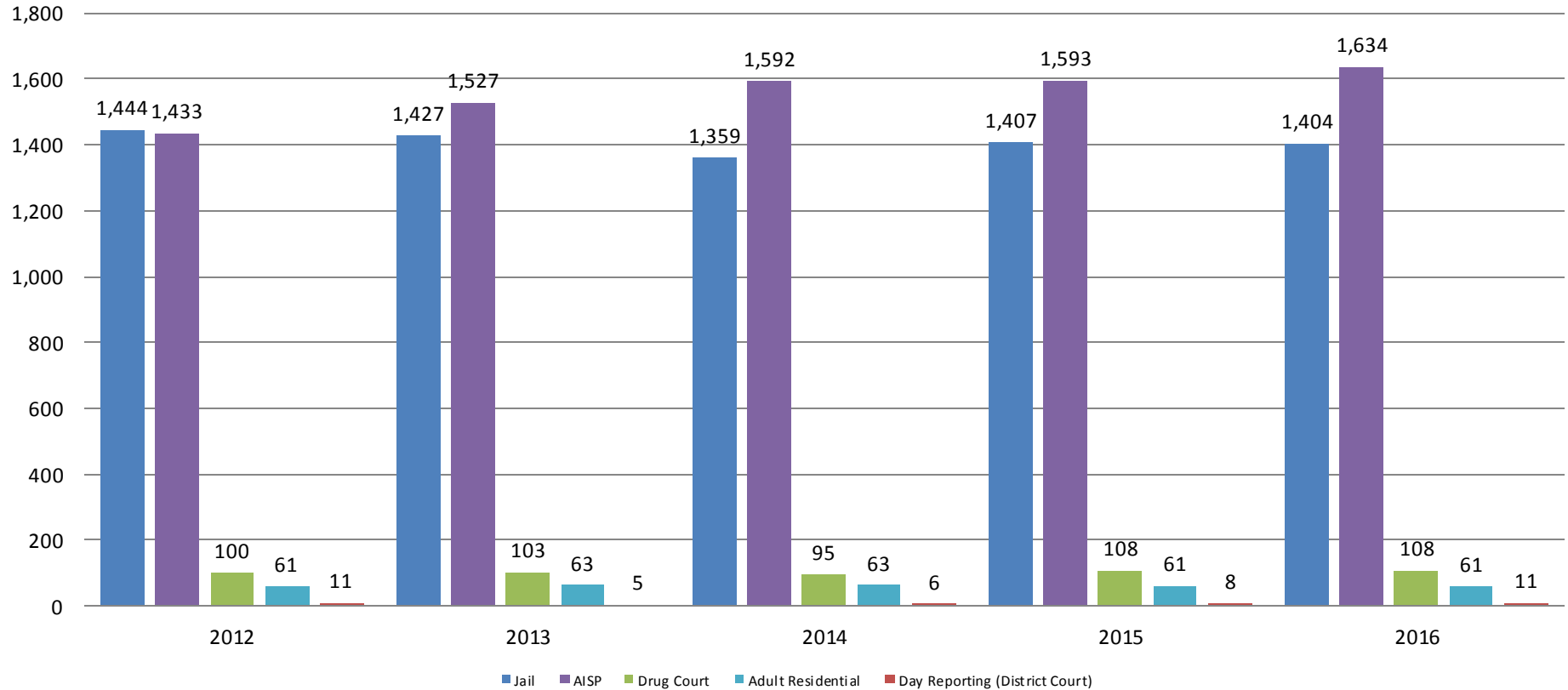
<u>January</u>	<u>January YTD Avg.</u>
2013 = 64	2013 = 64
2014 = 61	2014 = 61
2015 = 58	2015 = 58
2016 = 62	2016 = 62



(data obtained from SG CO Dept. of Corrections)

Correlation: Total & Sedgwick County Programs (Adult)

Total Annual ADP: 2012 - Present



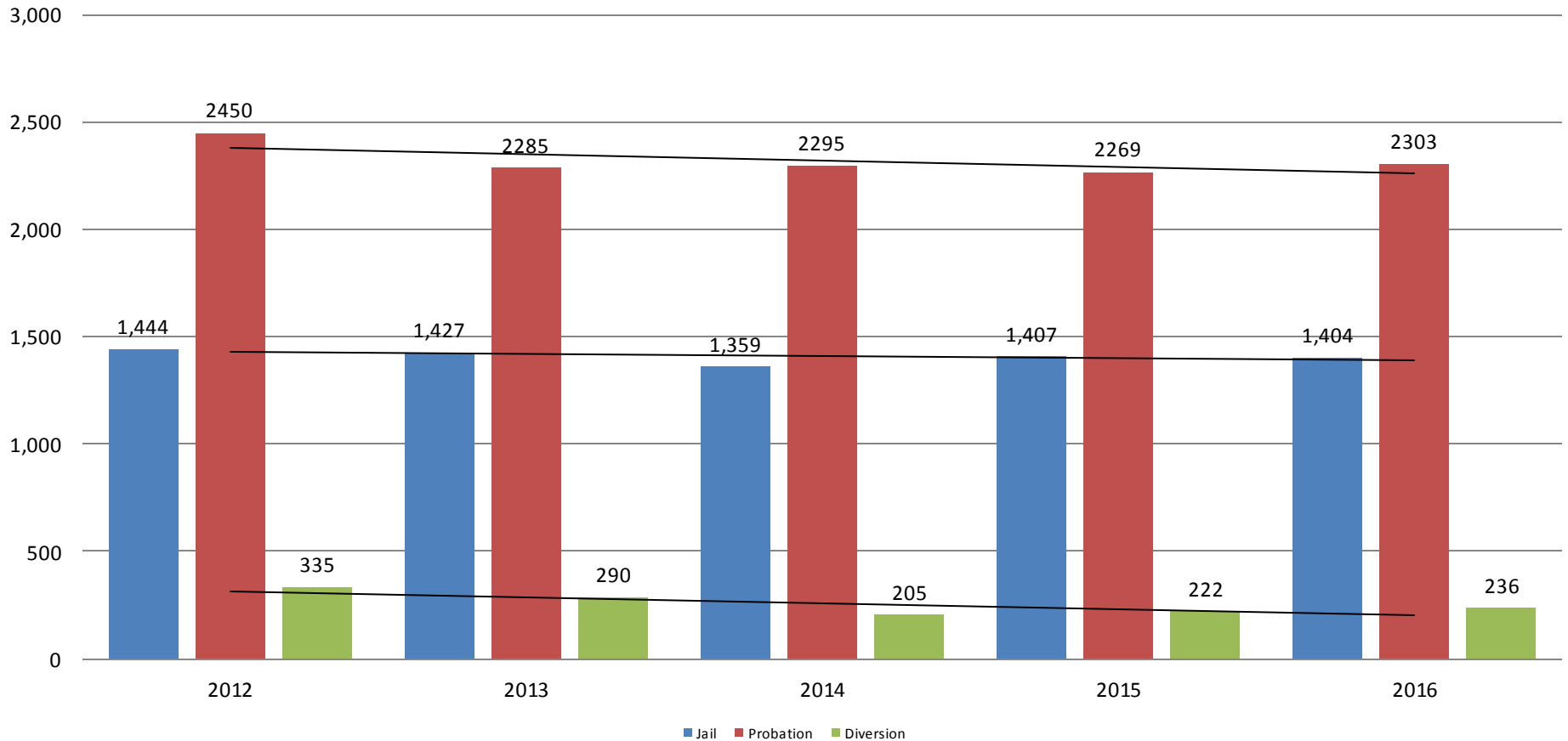
Jail includes individuals in booking, detention, work release and out-of county (combined)

(data obtained from detention facility, SG Dept. of Corrections, Pretrial Services, & CoW)



Correlation: Total & District Court Programs

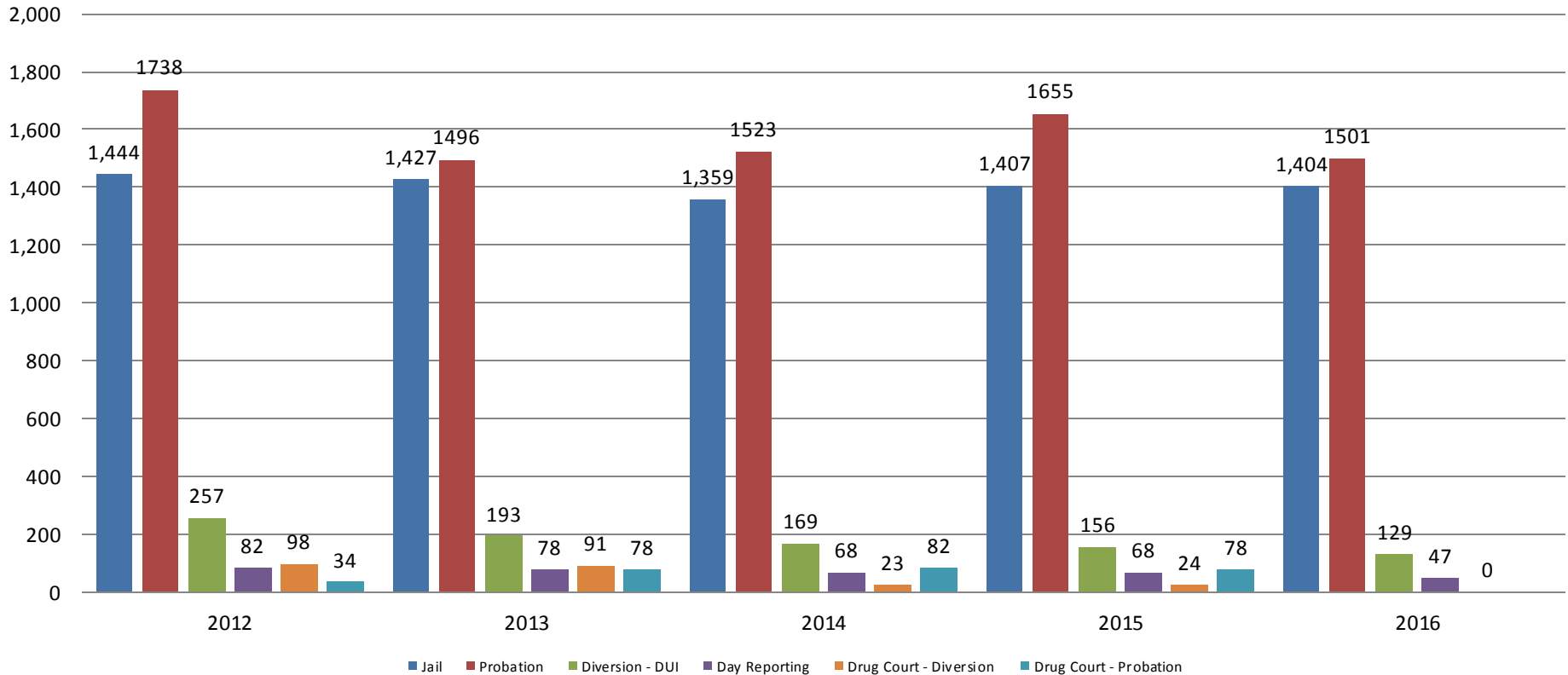
Total Annual ADP: 2012 - Present



Jail includes individuals in booking, detention, work release and out-of county (combined)

Correlation: Total & City of Wichita / Municipal Court Programs

Total Annual ADP: 2012 - present

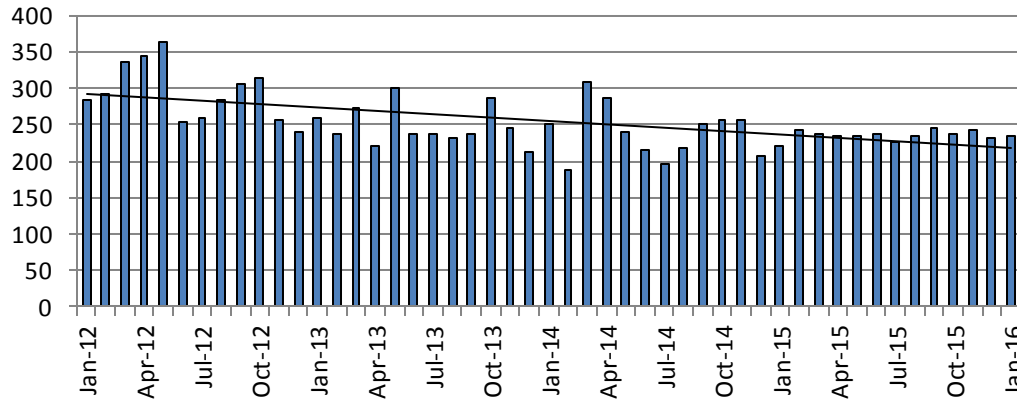


Jail includes individuals in booking, detention, work release and out-of county (combined)



Juvenile

JIAC Intakes: 2012 - present



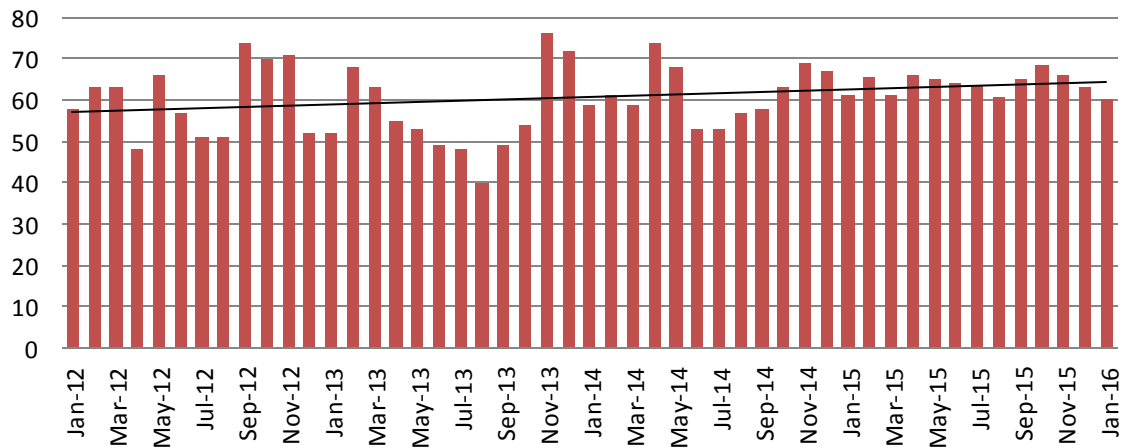
January	January YTD Average
2013 = 258	2013 = 258
2014 = 250	2014 = 250
2015 = 221	2015 = 221
2016 = 235	2016 = 235

(data obtained from SG CO Dept. of Corrections)

JDF ADP: 2012 - present

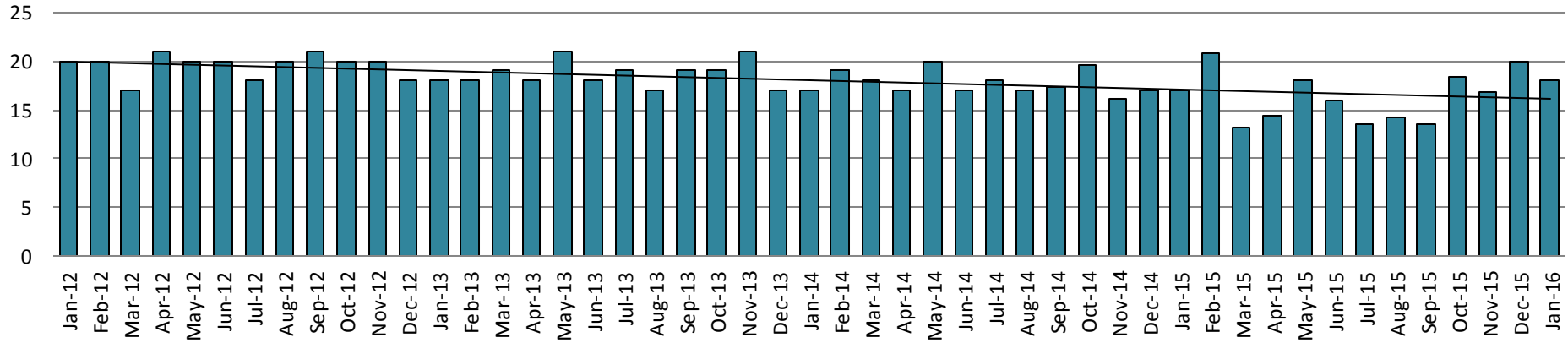
January	January YTD Avg.
2013 = 52	2013 = 52
2014 = 59	2014 = 59
2015 = 61	2015 = 61
2016 = 60	2016 = 60

(data obtained from SG CO Dept. of Corrections)

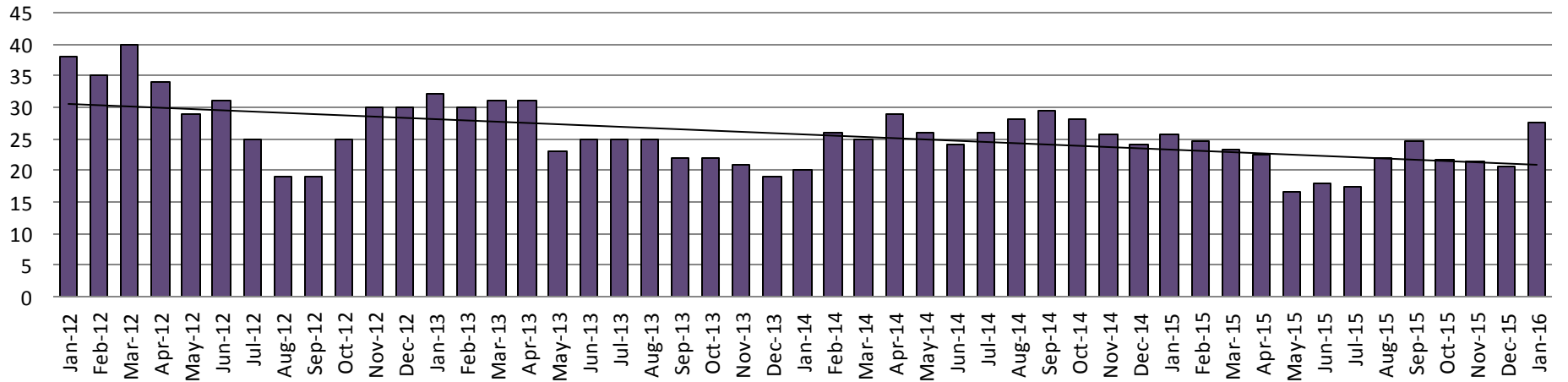


Juvenile Intervention Services

Juvenile Residential Facility (JRF) ADP: 2012 - present

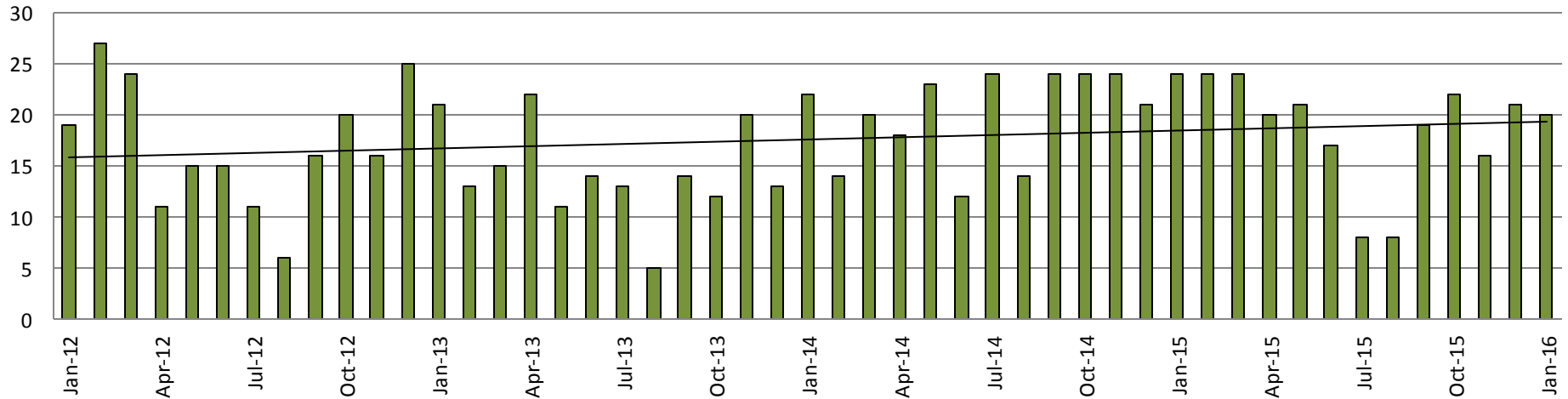


Home-Based Supervision ADP: 2012 - present

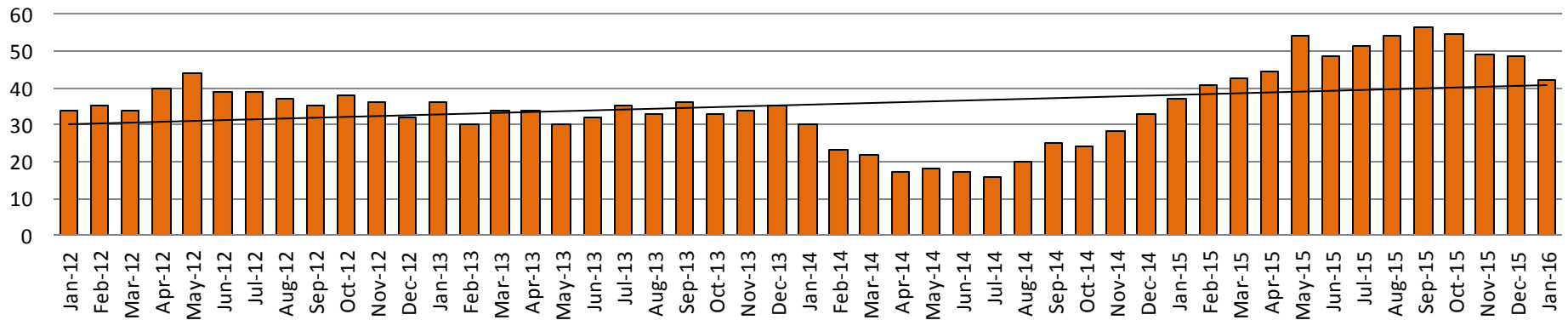


Juvenile Intervention Services

Weekend Alternative Detention Program 2012 - present



Detention Advocacy Case Management Services ADP: 2012 - present



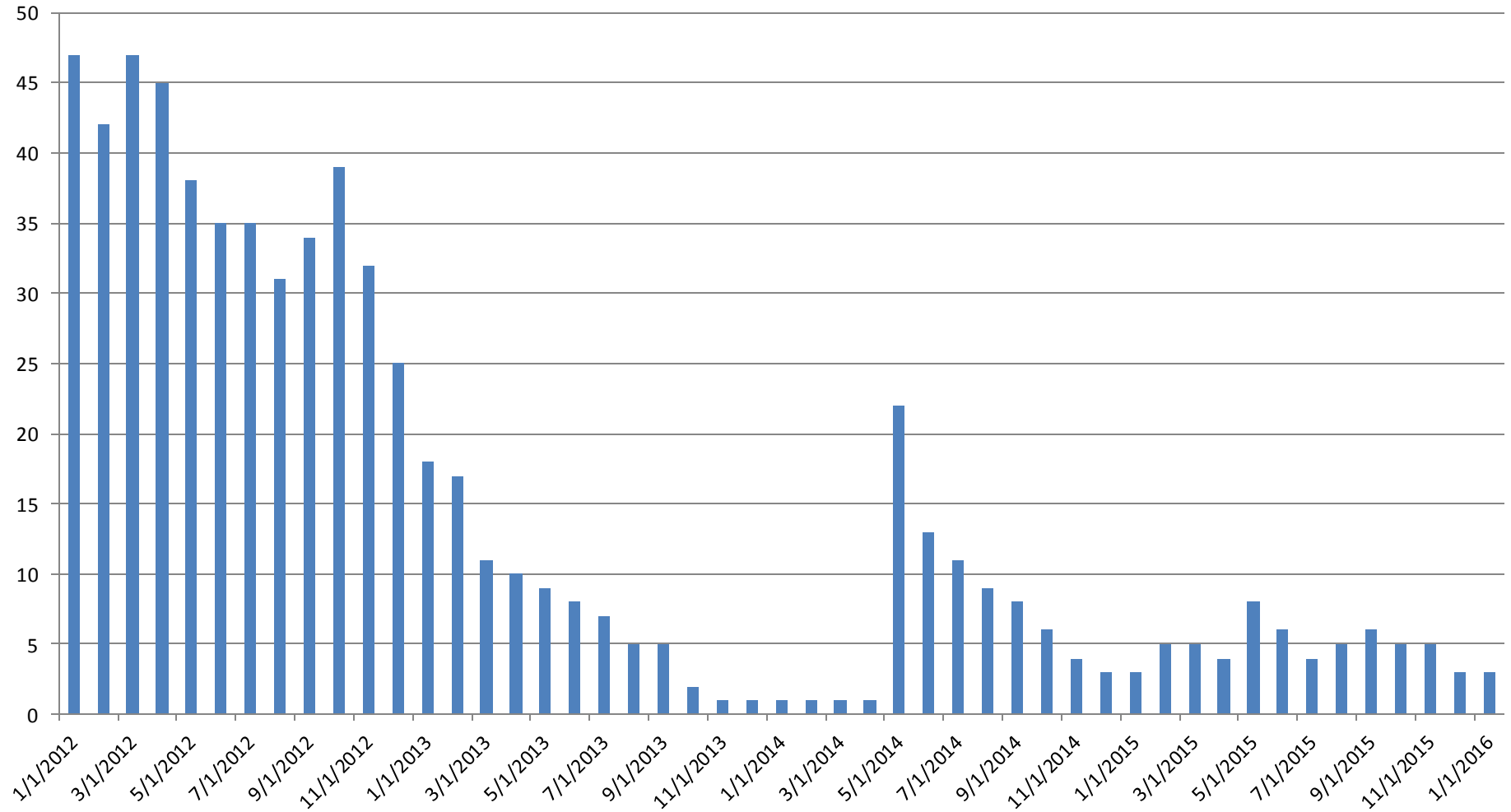
Juvenile Intervention Services

January ADP	2013	2014	2015	2016
Juvenile Residential Facility	18	17	17	18
Home Based Supervision	32	20	26	27
Detention Advocacy Case Management Services	36	30	38	42
Weekend Alternative Detention Program (total)	21	22	24	20

January YTD AVERAGE	2013	2014	2015	2016
Juvenile Residential Facility	18	17	17	18
Home Based Supervision	32	20	26	27
Detention Advocacy Case Management Services	36	30	38	42
Weekend Alternative Detention Program	21	22	24	20

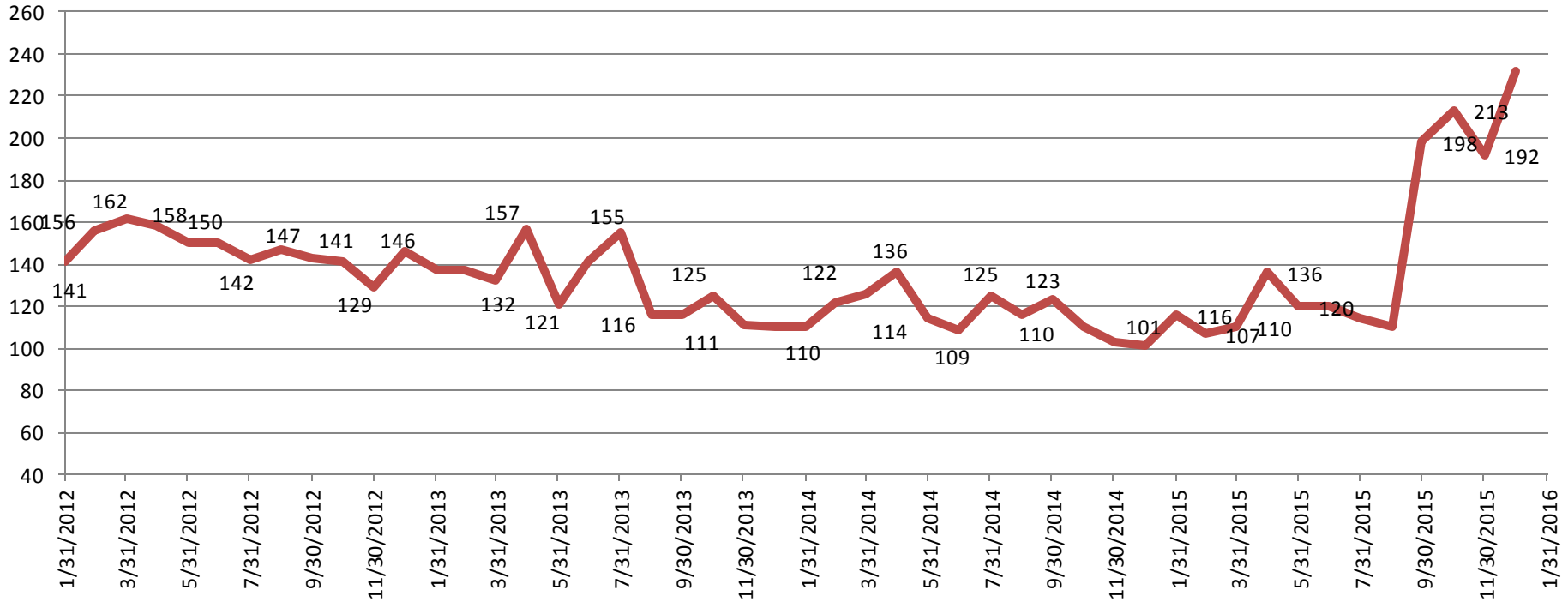
Monthly Jail Snapshot: January 31, 2016

BICE Holds 2012-Present



Monthly Jail Snapshot: January 31, 2015

Felony Commitments: February 2012 - present



January:

2012 = data not available

2013 = 146

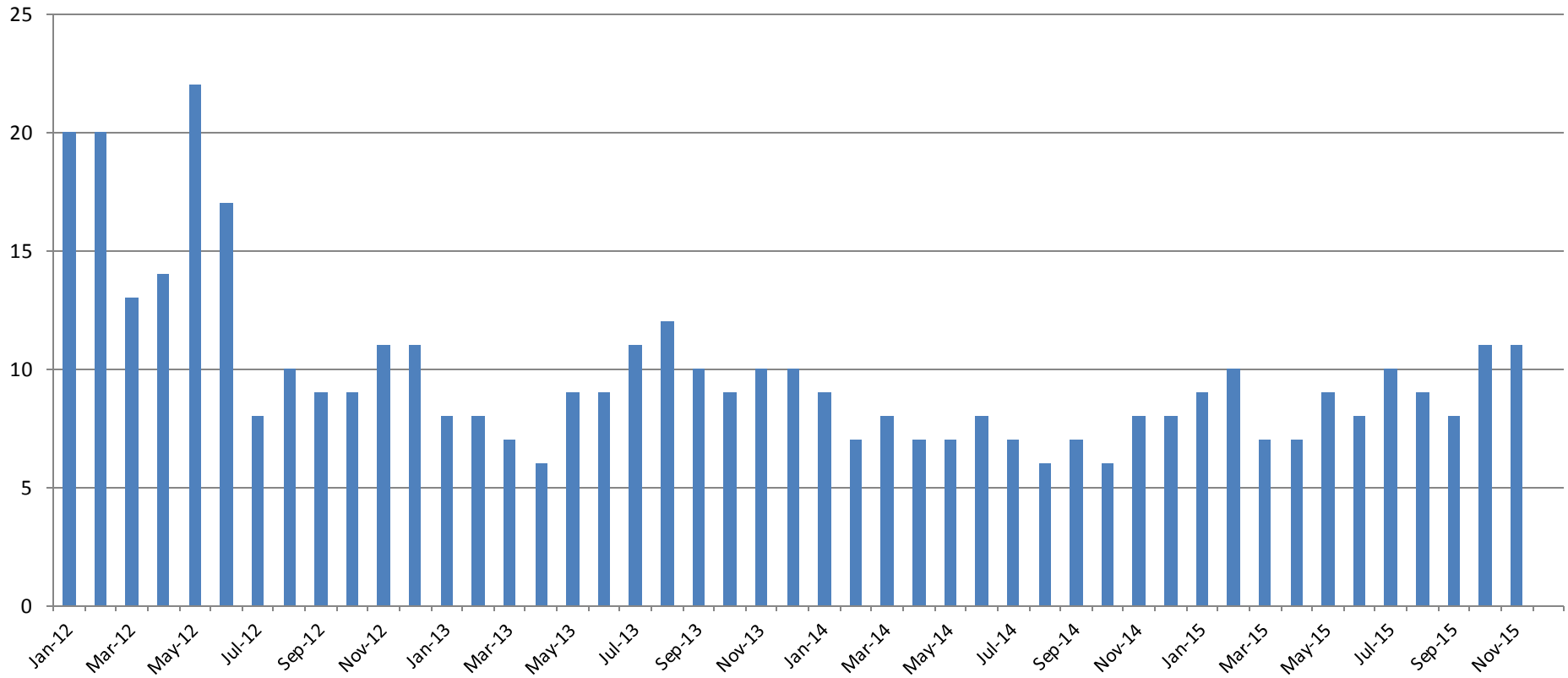
2014 = 110

2015 = 101

2016 = 232



Journal Entry Completion (Average Days) January 2013-Present



This data is always reported a month behind

