

Criminal Justice Coordinating Council

Population Report & Program Trends

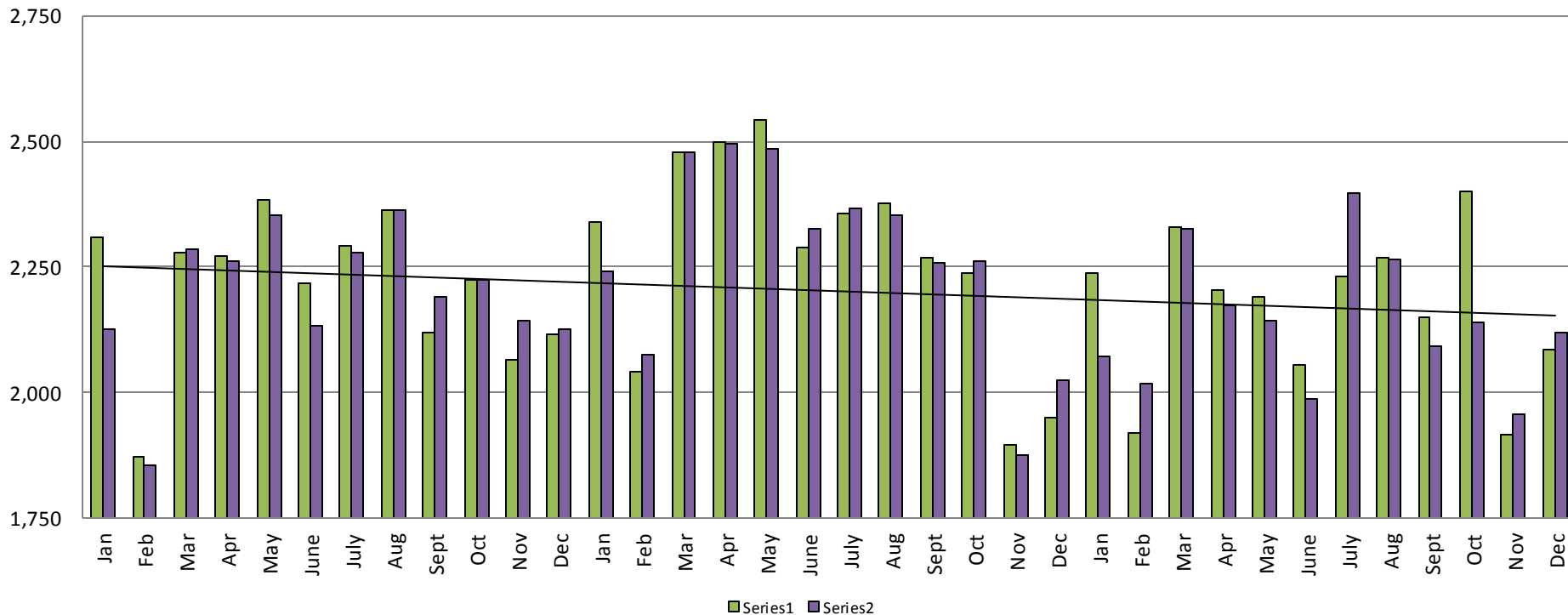
January 28, 2015



Sedgwick County...
working for you

Detention Facility

Booking Admits & Housing Discharges from Custody January 2013 - Present



Housing Discharges for December

2013 = 2,127
 2014 = 2,026
 2015 = 2,119

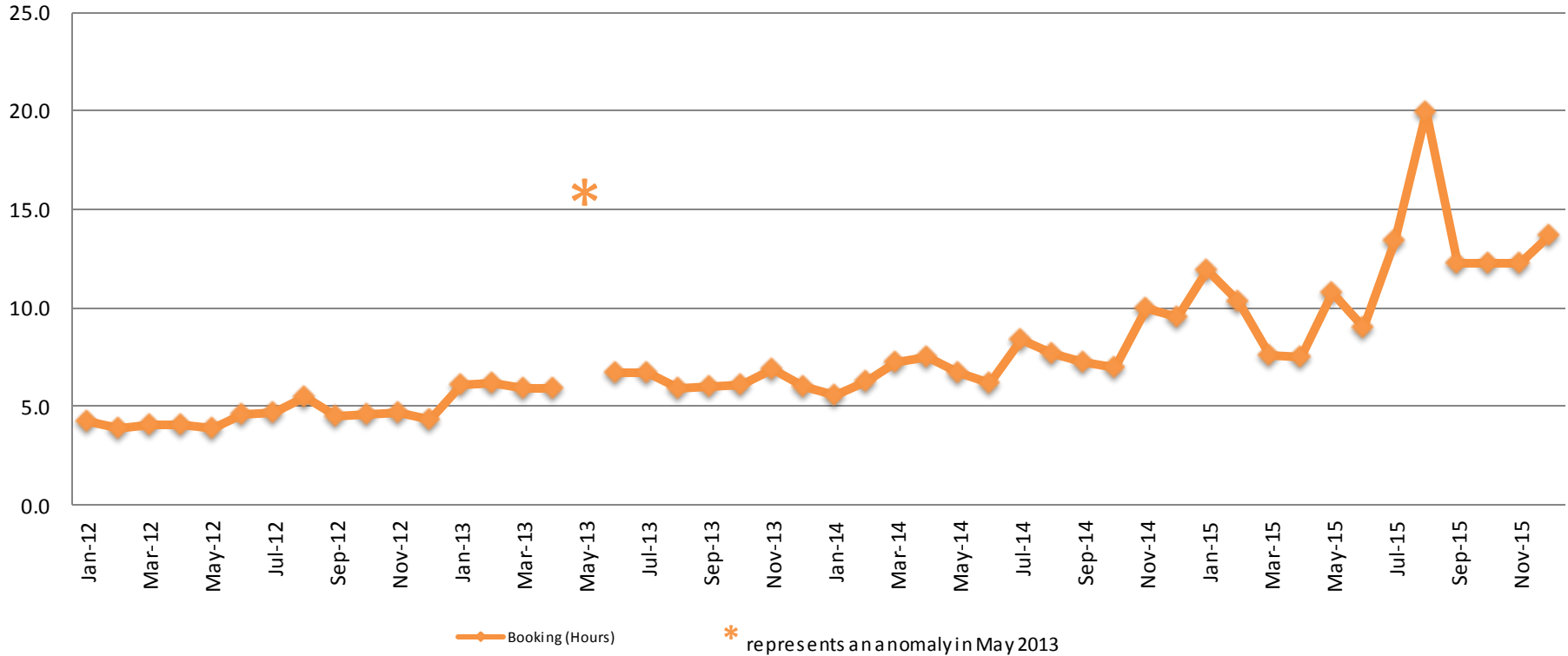
Bookings for December

2013 = 2,115
 2014 = 1,950
 2015 = 2,086



Average Length of Stay: Booking (Hours)

January 2012 - Present



December

2012 = 4.3
 2013 = 6.0
 2014 = 9.5
 2015 = 13.7

December YTD Avg.

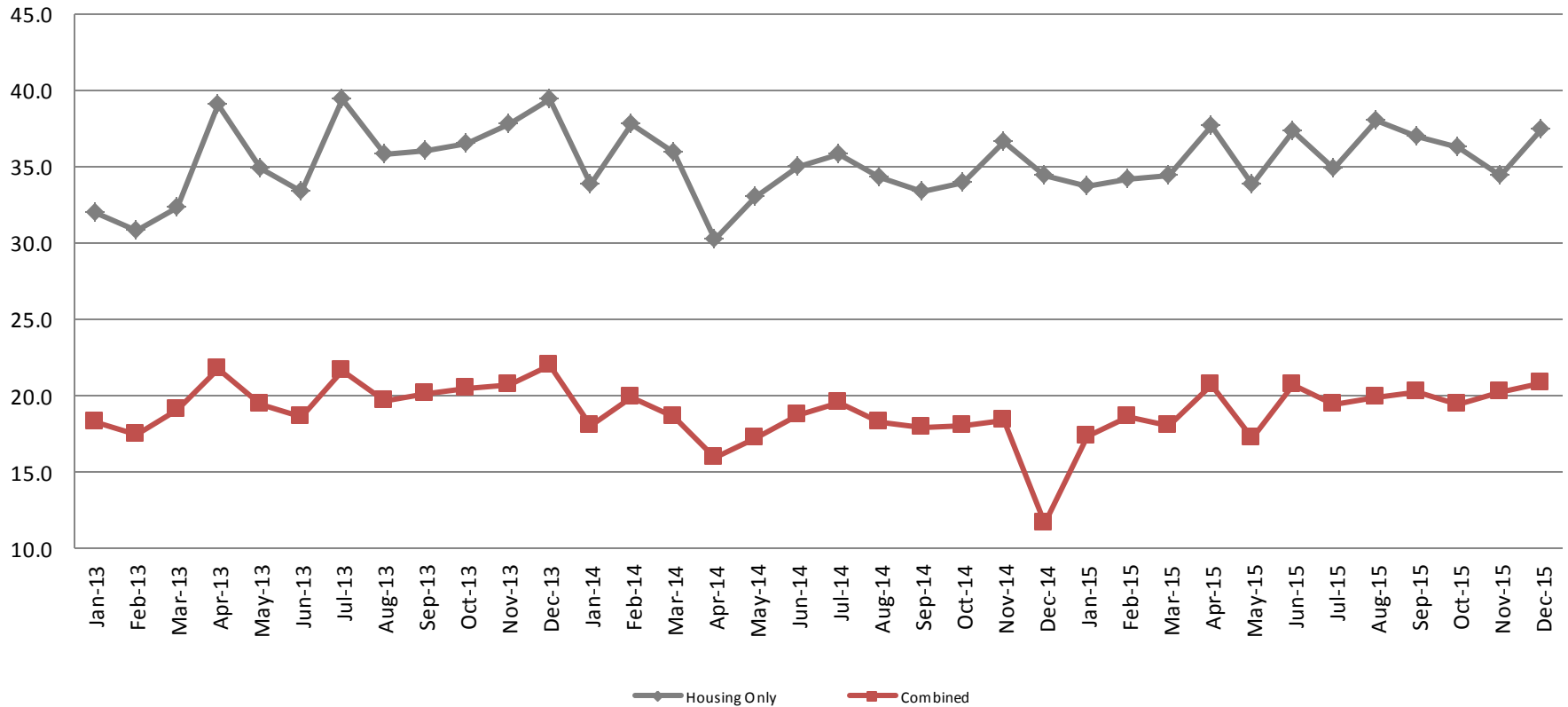
2012 = 4.4
 2013 = 7.1
 2014 = 7.4
 2015 = 11.8

(data obtained from detention facility)

Average Length of Stay: Housing & Combined (Days)

January 2013 - Present

Present



Dec. Housing

2013 = 39.5
2014 = 34.5
2015 = 37.5

Dec. Housing YTD Avg.

2013 = 35.6
2014 = 34.6
2015 = 35.8

Dec. Combined

2013 = 22.0
2014 = 11.7
2015 = 20.8

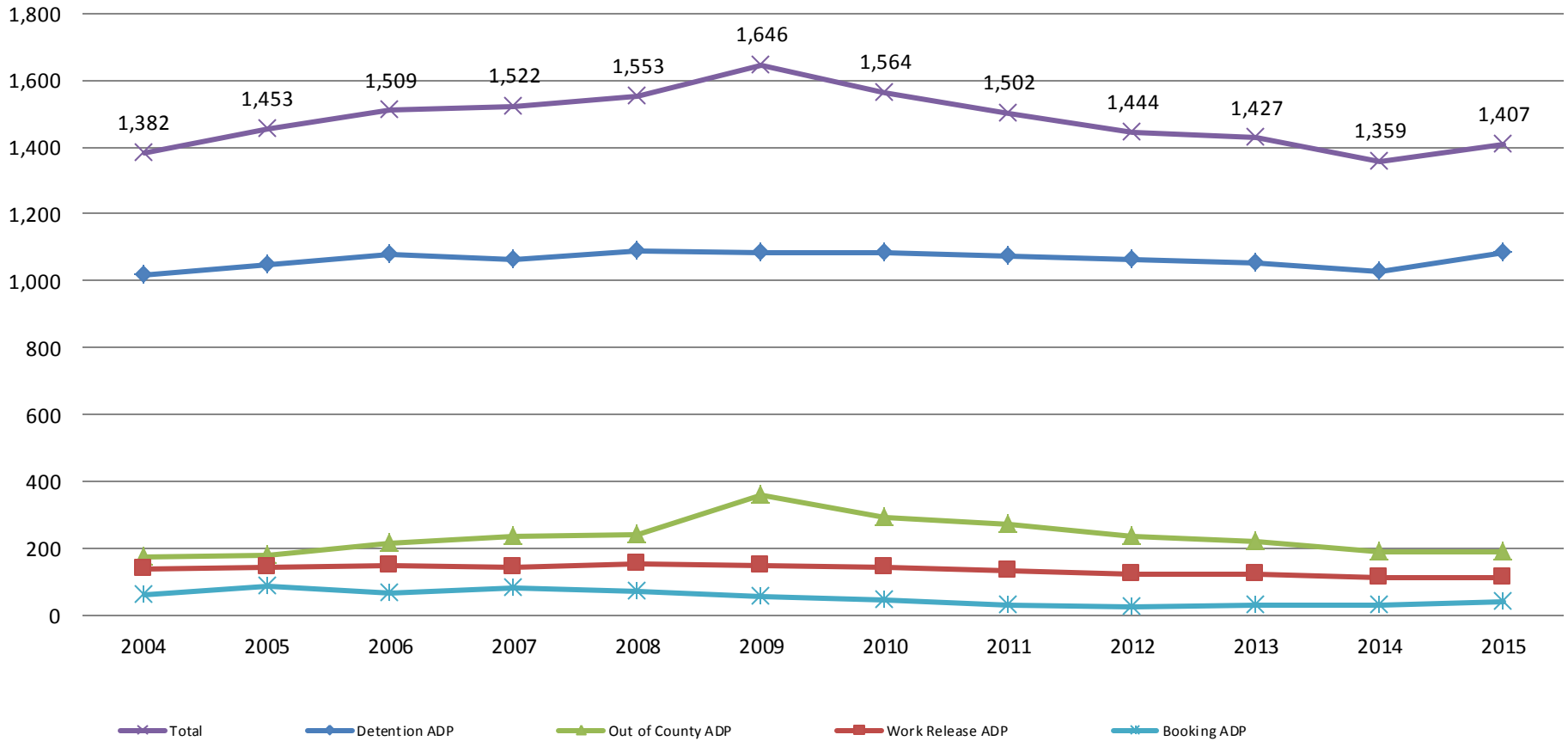
Dec. Combined YTD Avg.

2013 = 20.0
2014 = 17.7
2015 = 19.4



Jail: Annual Average Daily Population (ADP)

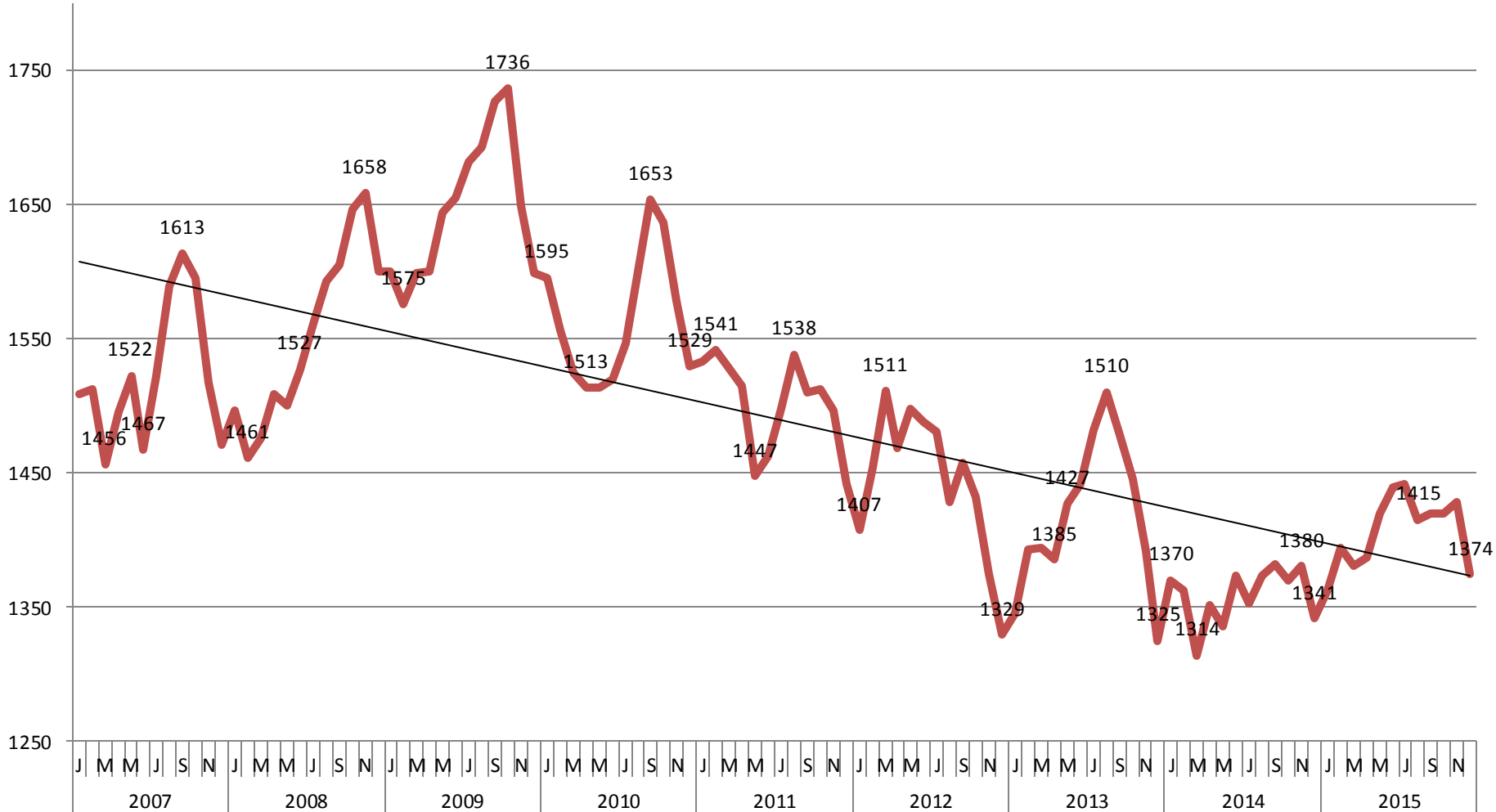
TRENDS: Booking, Detention, Work Release, & Out of County Annual ADP: 2004 - present



Sedgwick County...
working for you

(data obtained from detention facility)

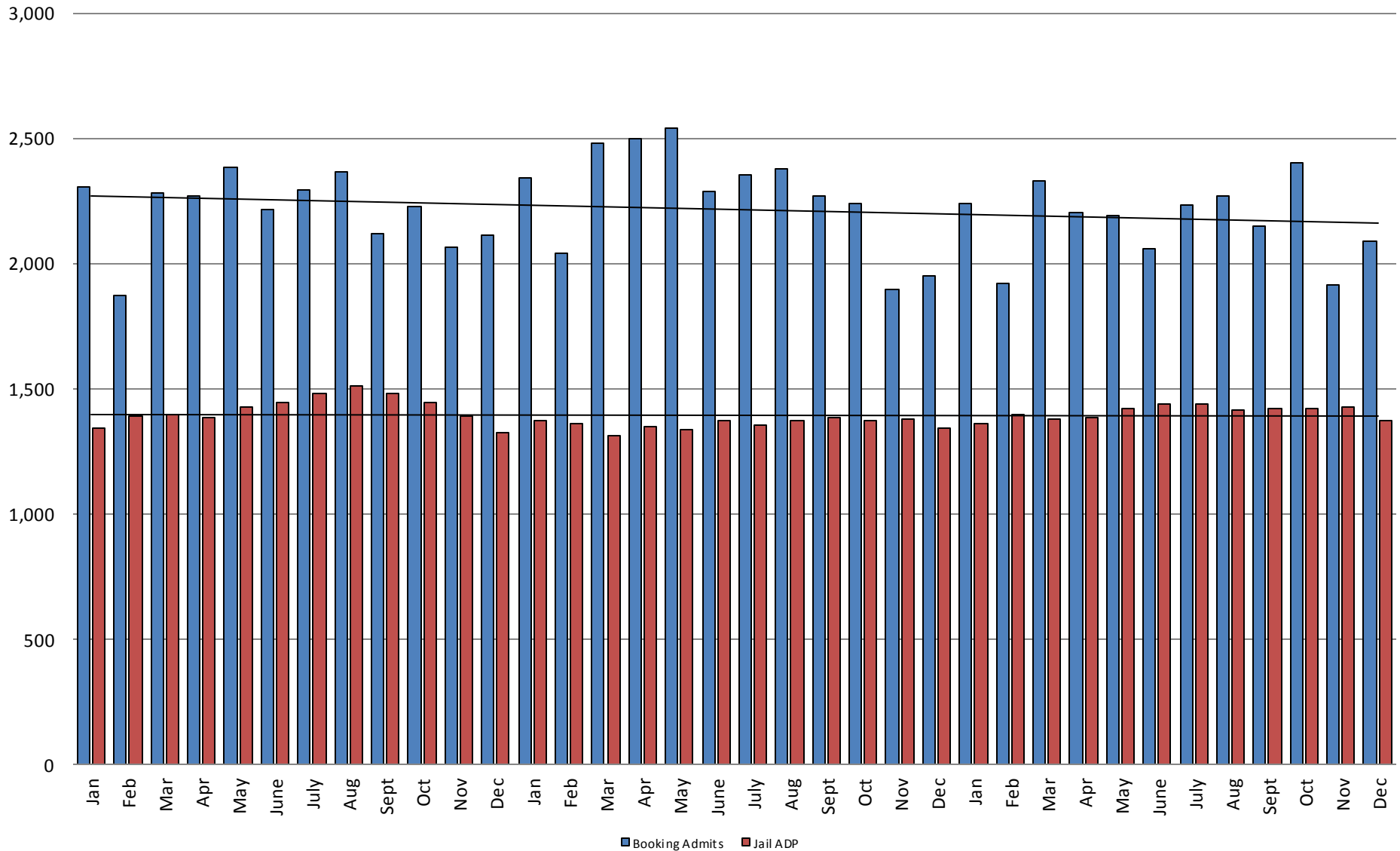
TOTAL MONTHLY ADP: JAIL (Booking, Detention Facility, Work Release, & Out of County) 2007 - present



This slide shows total monthly ADP for individuals in booking, detention, work release and out-of county (combined)



Booking Admits & Total Monthly ADP (Jail): 2013 - present



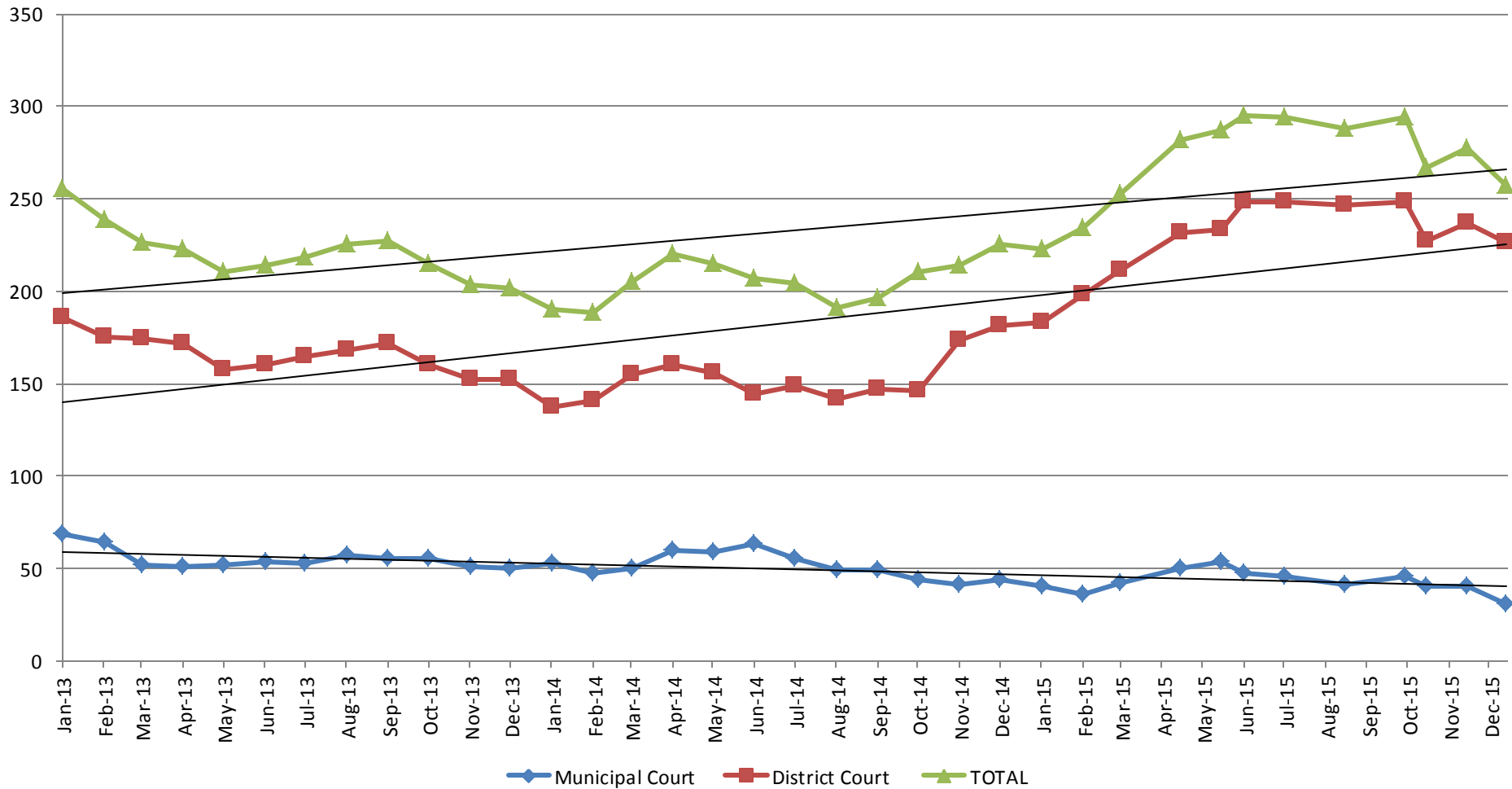
Jail includes individuals in booking, detention, work release and out-of county (combined)

(data obtained from detention facility)



Sedgwick County...
working for you

Pretrial Services Program (PSP) Monthly ADP: January 2013 - Present



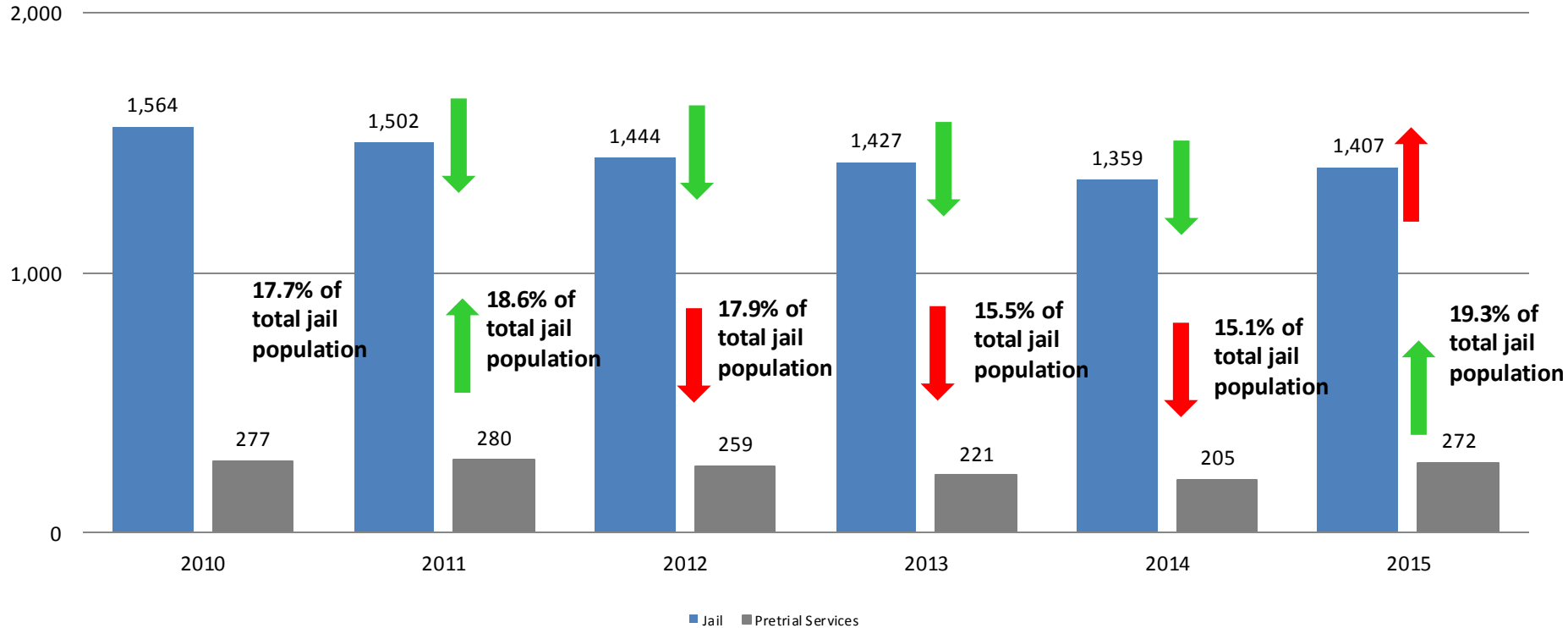
December	2013	2014	2015	December YTD Avg.	2013	2014	2015
Municipal Court	50	44	31	Municipal Court	55	51	43
District Court	152	181	226	District Court	166	152	228
TOTAL	202	225	257	TOTAL	221	205	271



(data obtained from Pretrial Services)

Correlation: Total & PSP

Total Annual ADP: 2010 - 2015



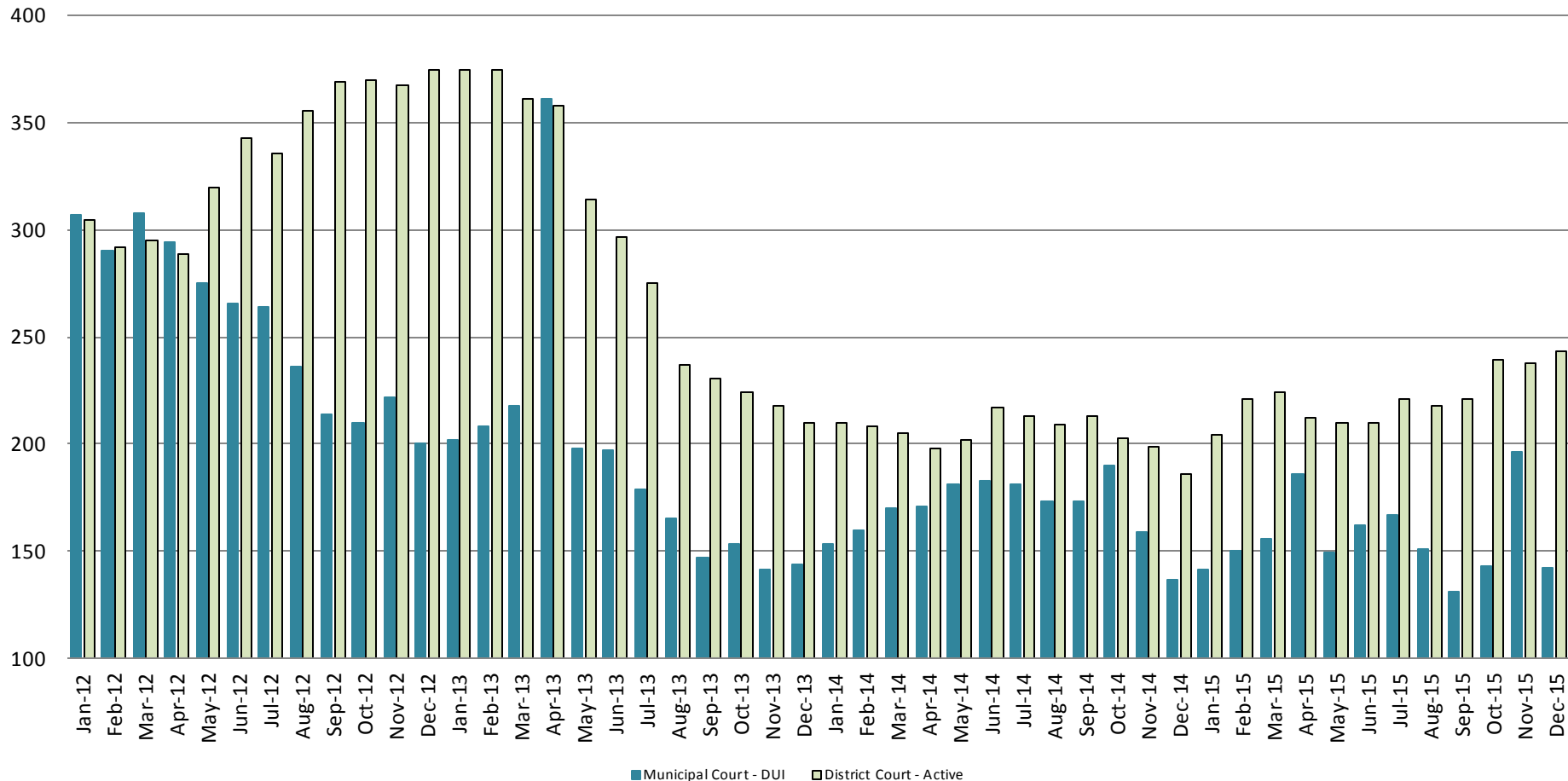
Arrows represent the overall increase/decrease of the population from year to year

Jail includes individuals in booking, detention, work release and out-of county (combined)



Diversion - Active Caseload

January 2012 - Present



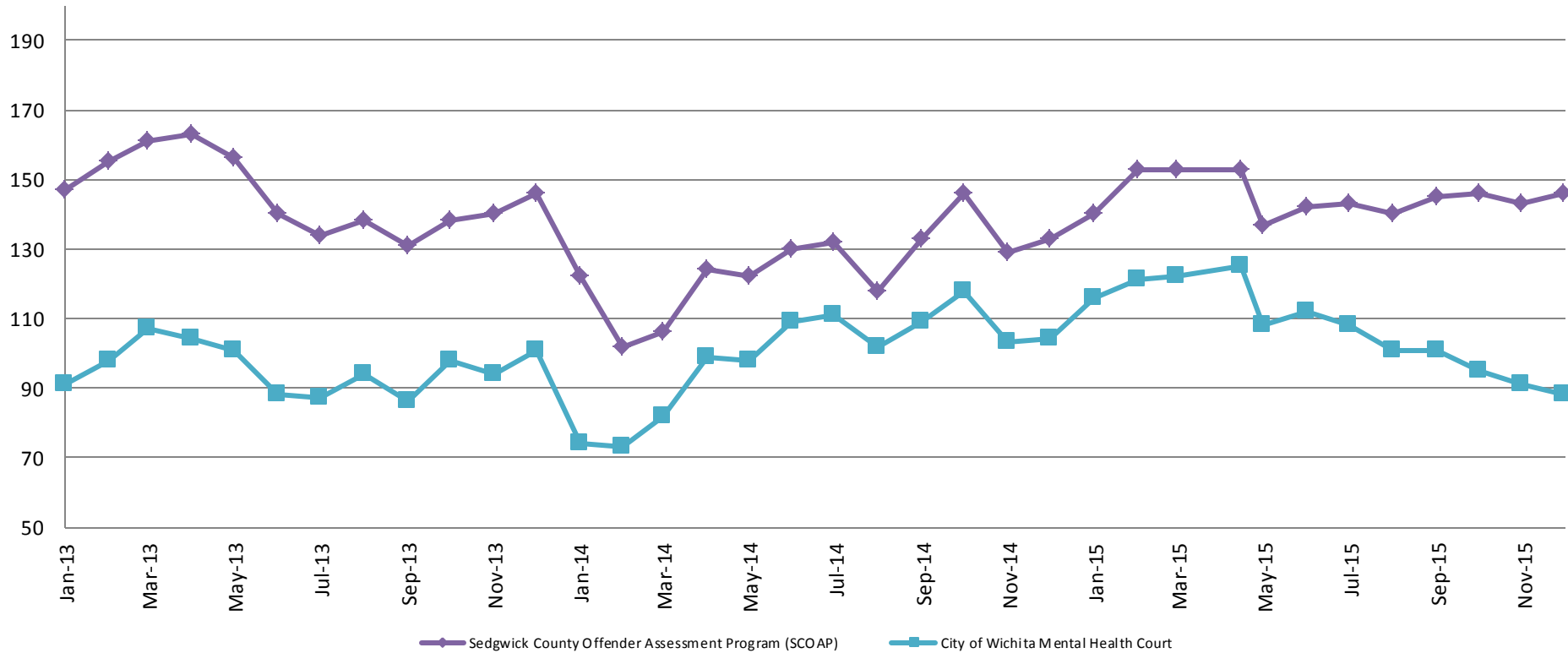
<u>December</u>	<u>2012</u>	<u>2013</u>	<u>2014</u>	<u>2015</u>	<u>December YTD Avg.</u>	<u>2012</u>	<u>2013</u>	<u>2014</u>	<u>2015</u>
Municipal Court- DUI	200	144	137	142	Municipal Court	257	293	169	156
District Court- Active	375	210	186	243	District Court	335	290	205	222



Sedgwick County...
working for you

(data obtained from DA's Office & CoW)

Mental Health - ADP 2013 - present

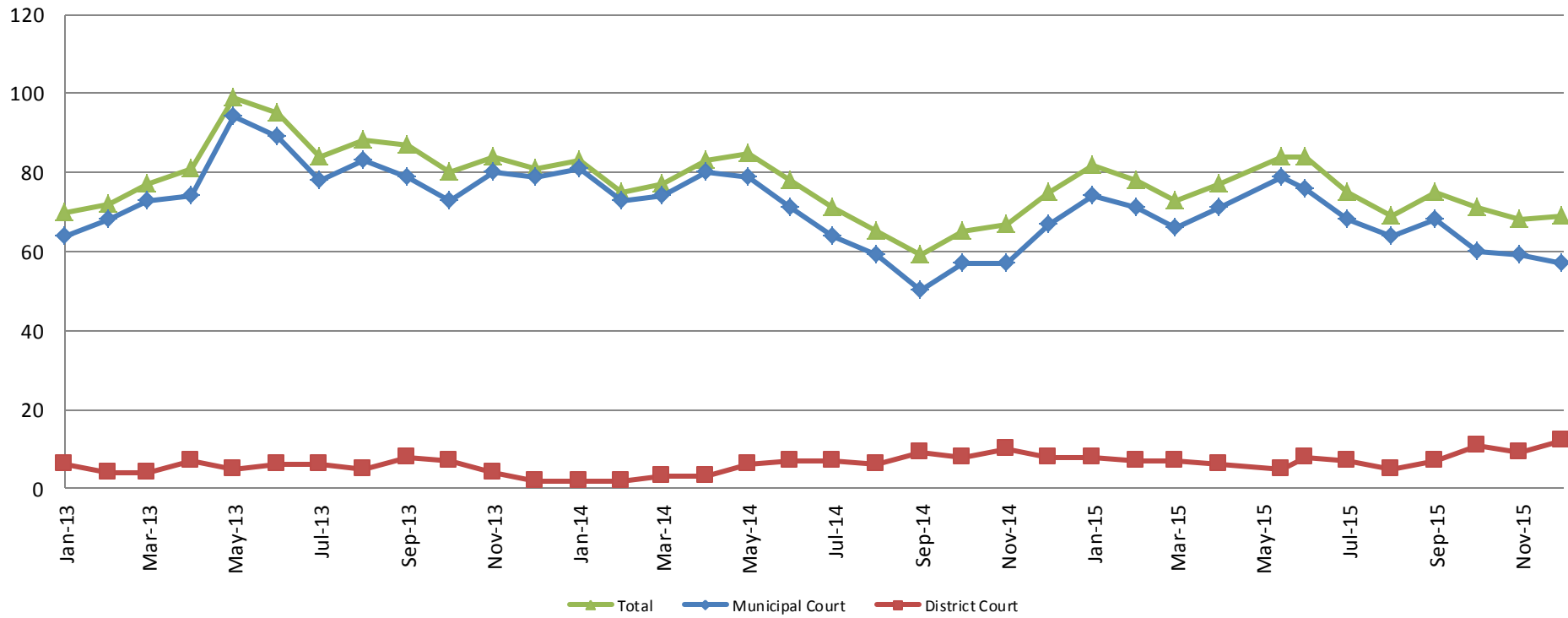


December:	2013	2014	2015
SCOAP	146	133	146
CoW – MH Court	101	104	88
December YTD Avg.	2013	2014	2015
SCOAP	146	125	145
CoW – MH Court	96	99	107

(data obtained from COMCARE)

Day Reporting - Active Caseload

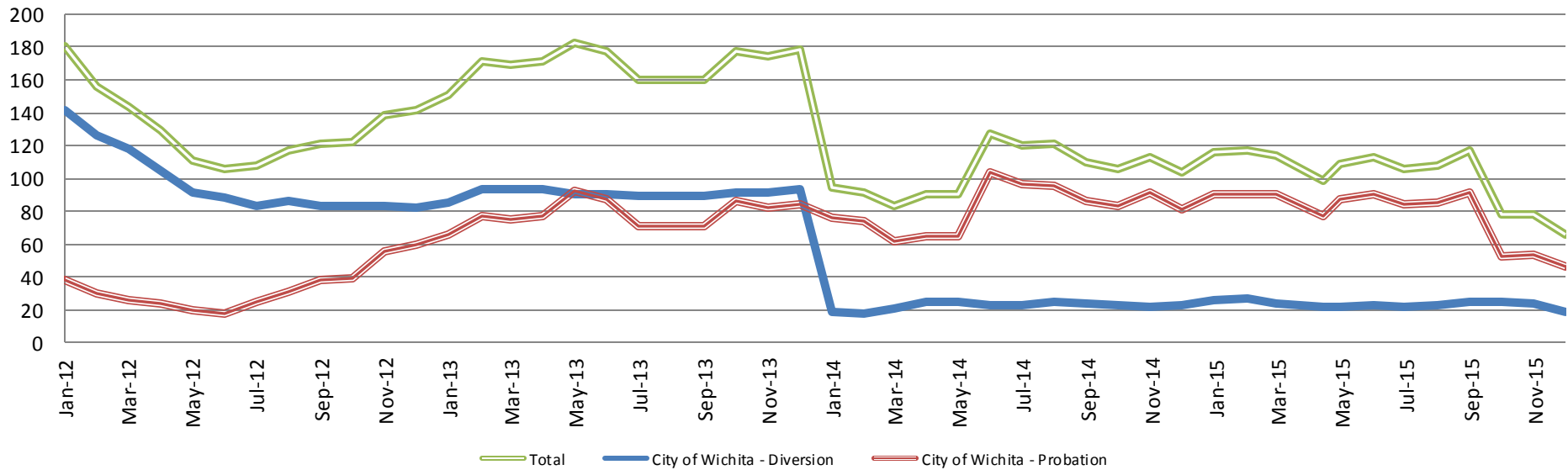
2013-present



December	2013	2014	2015
Municipal Court	79	67	57
District Court	2	8	12
TOTAL	81	75	69
December YTD Avg.	2013	2014	2015
Municipal Court	78	68	68
District Court	5	6	8
TOTAL	83	74	75

Drug Court

Drug Court - City of Wichita ADP: 2012 - present



December - CoW Diversion

2012 = 82
2013 = 94
2014 = 23
2015 = 19

December YTD Avg.

2012 = 98
2013 = 91
2014 = 23
2015 = 24

December - CoW Probation

2012 = 60
2013 = 84
2014 = 81
2015 = 47

December YTD Avg.

2012 = 34
2013 = 78
2014 = 82
2015 = 78

December - CoW Total

2012 = 142
2013 = 178
2014 = 104
2015 = 66

December YTD Avg.

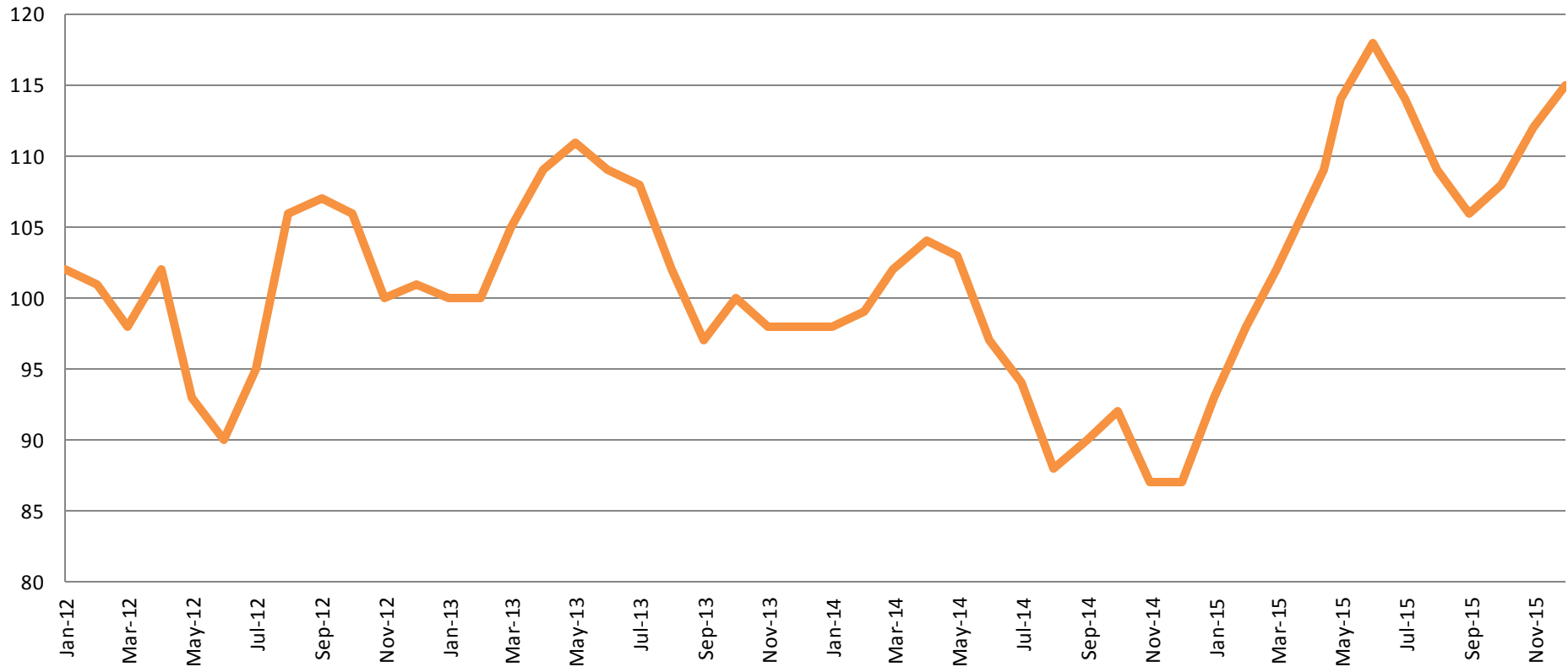
2012 = 131
2013 = 169
2014 = 104
2015 = 102

(data obtained from CoW)



Drug Court - Sedgwick County

ADP: 2012 - present



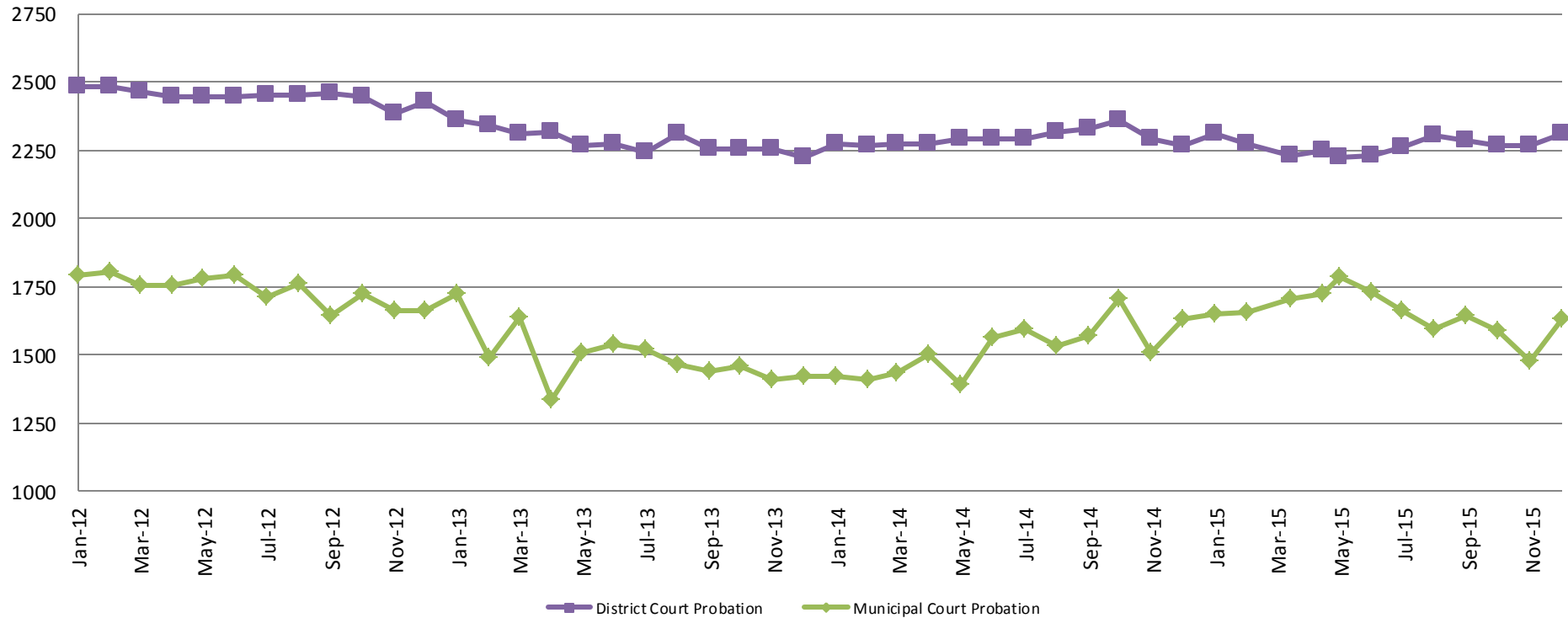
December - SG CO

2012 = 101
2013 = 98
2014 = 87
2015 = 115

December YTD Avg.

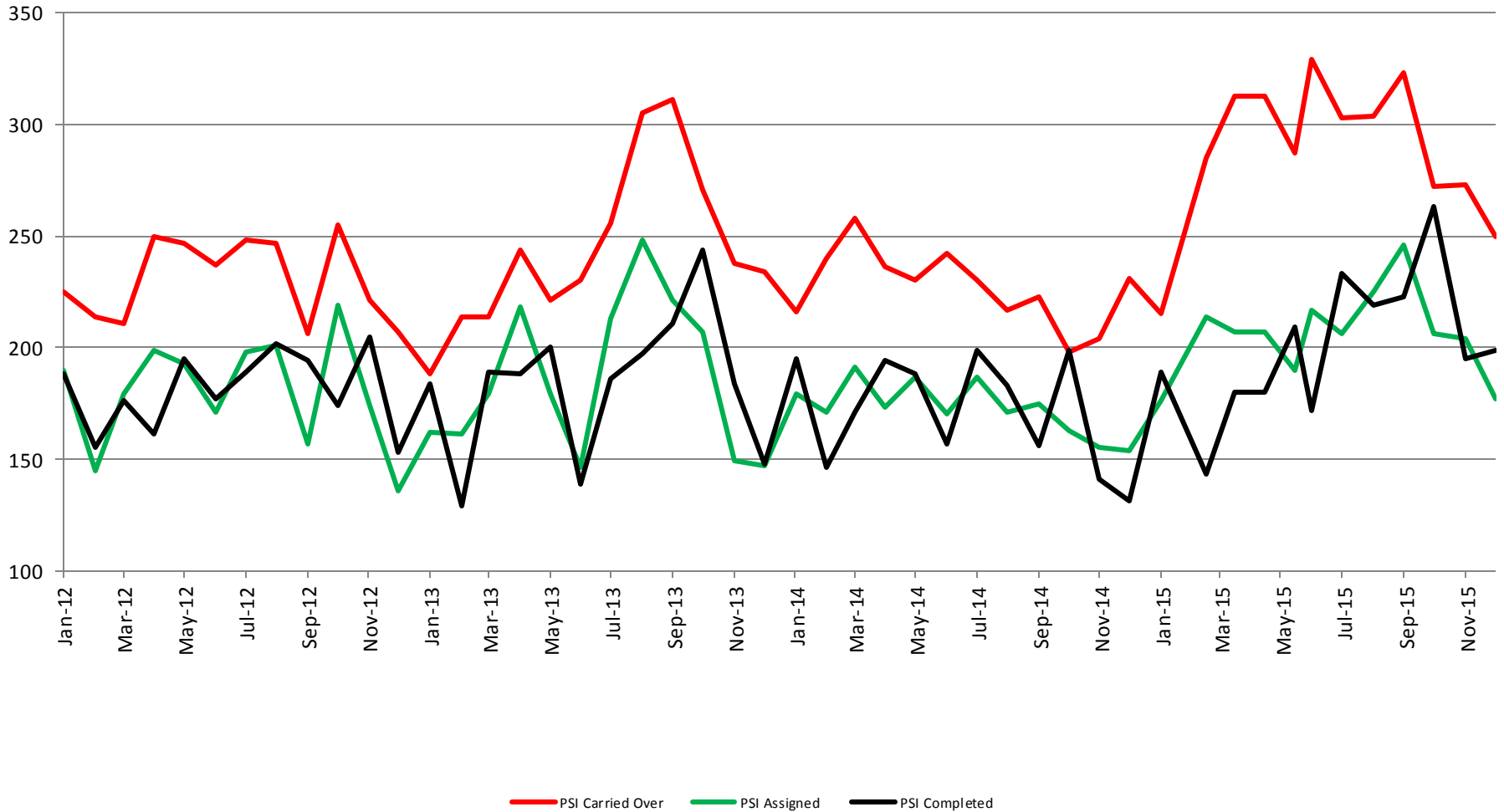
2012 = 100
2013 = 103
2014 = 95
2015 = 108

Probation - Active Caseloads 2012 - present



<u>December:</u>	<u>2013</u>	<u>2014</u>	<u>2015</u>
District Court	2,226	2,271	2,314
Municipal Court	1,420	1,632	1,633
<u>December YTD Avg.</u>	<u>2013</u>	<u>2014</u>	<u>2015</u>
District Court	2,285	2,295	2,269
Municipal Court	1,496	1,523	1,655

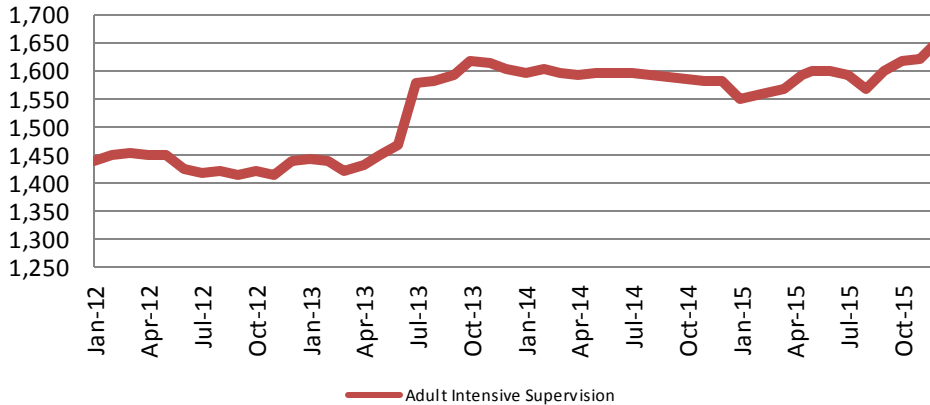
District Court Probation: Pre-Sentence Investigation 2012 - present



(data obtained from District Court)

Community Corrections

Adult Intensive Supervision Probation (AISP) ADP 2012 - present



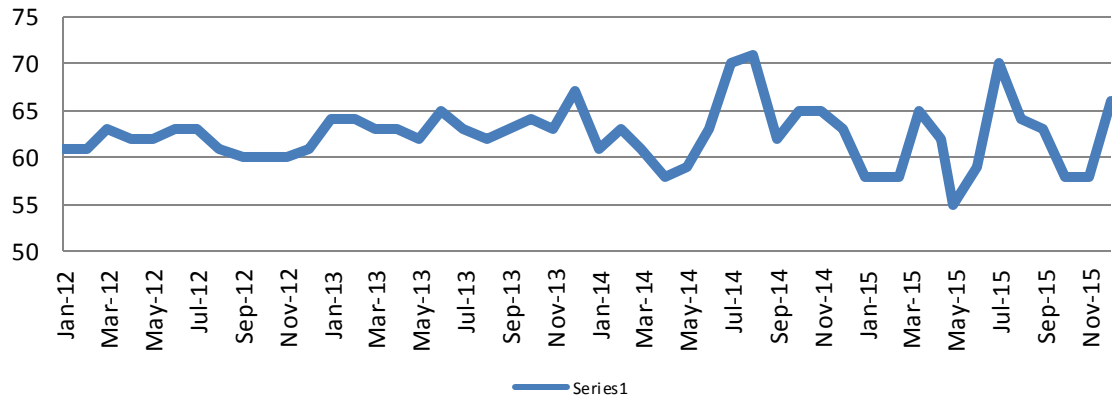
<u>Dec.</u>	<u>Dec. YTD Avg.</u>
2012 = 1,440	2012 = 1,433
2013 = 1,603	2013 = 1,520
2014 = 1,580	2014 = 1,592
2015 = 1,652	2015 = 1,593

(data obtained from SG CO Dept. of Corrections)

*KDOC changed population count to include drug court, residential and AISP beginning July 2013.

Adult Residential: ADP 2012 - present

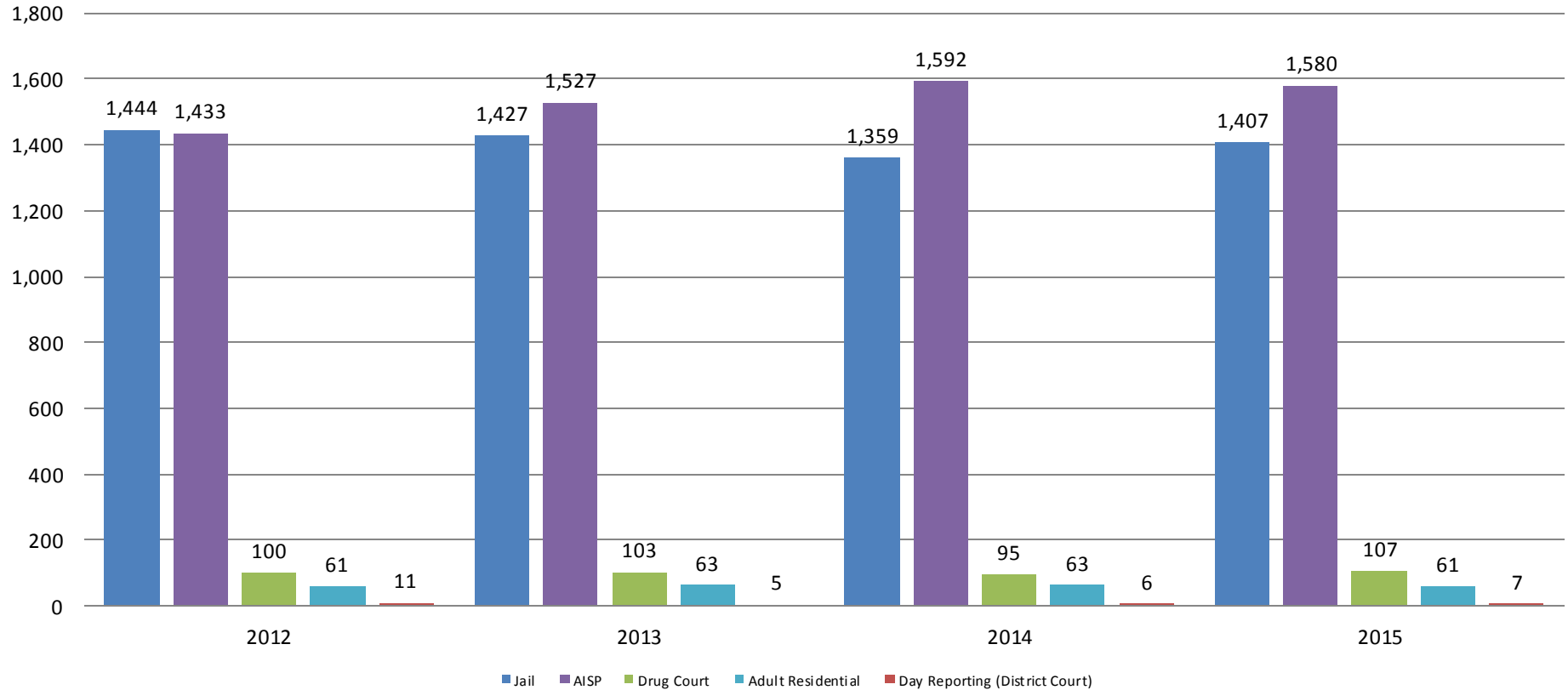
<u>Dec.</u>	<u>Dec. YTD Avg.</u>
2012 = 61	2012 = 61
2013 = 67	2013 = 64
2014 = 63	2014 = 63
2015 = 66	2015 = 61



(data obtained from SG CO Dept. of Corrections)

Correlation: Total & Sedgwick County Programs (Adult)

Total Annual ADP: 2012 - 2015



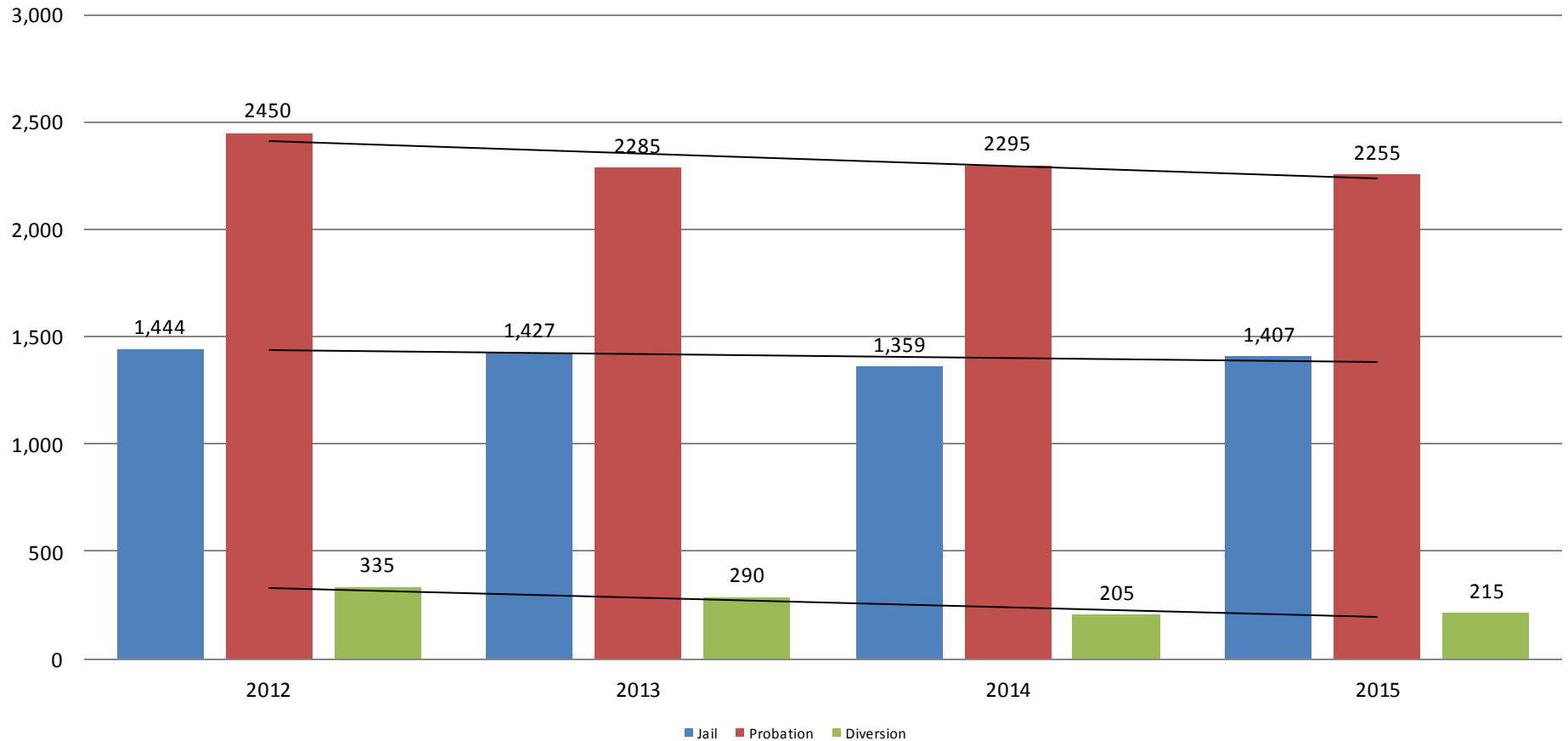
Jail includes individuals in booking, detention, work release and out-of county (combined)

(data obtained from detention facility, SG Dept. of Corrections, Pretrial Services, & CoW)



Correlation: Total & District Court Programs

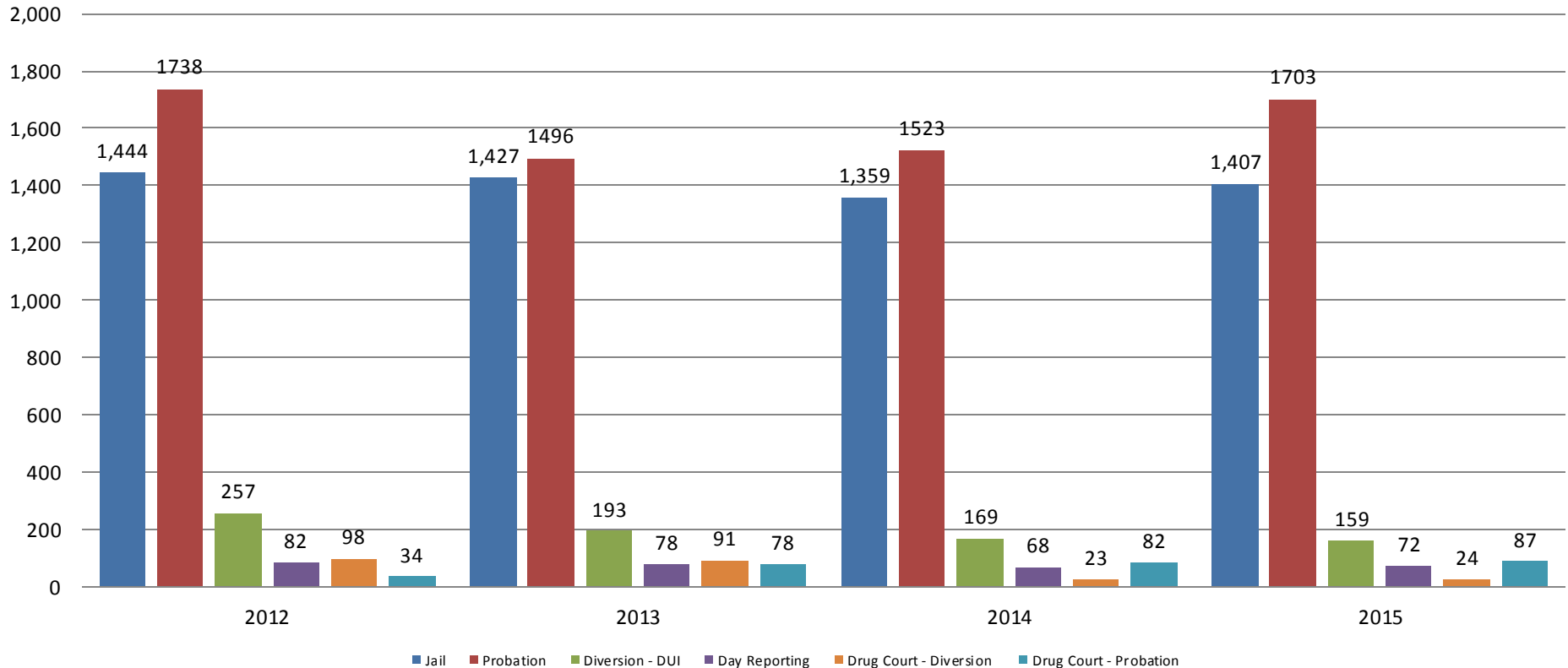
Total Annual ADP: 2012 - 2015



Jail includes individuals in booking, detention, work release and out-of county (combined)

Correlation: Total & City of Wichita / Municipal Court Programs

Total Annual ADP: 2012 - present

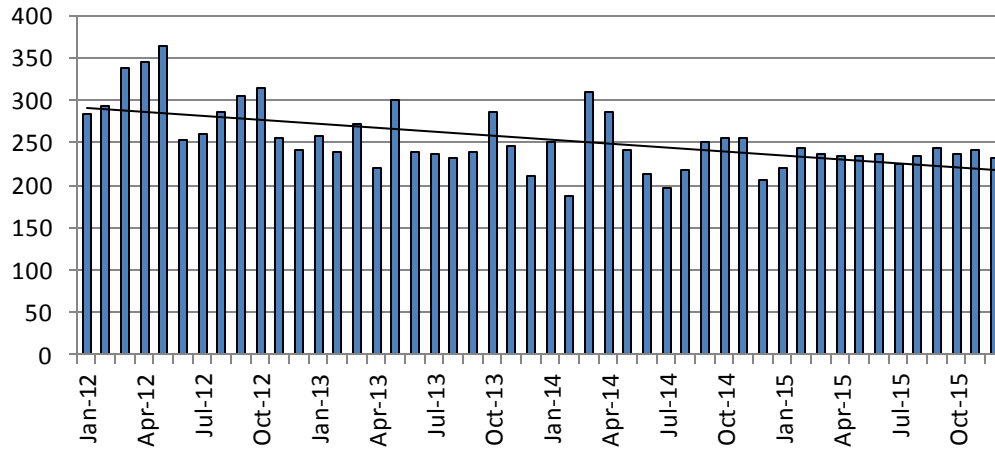


Jail includes individuals in booking, detention, work release and out-of county (combined)



Juvenile

JIAC Intakes: 2012 - present



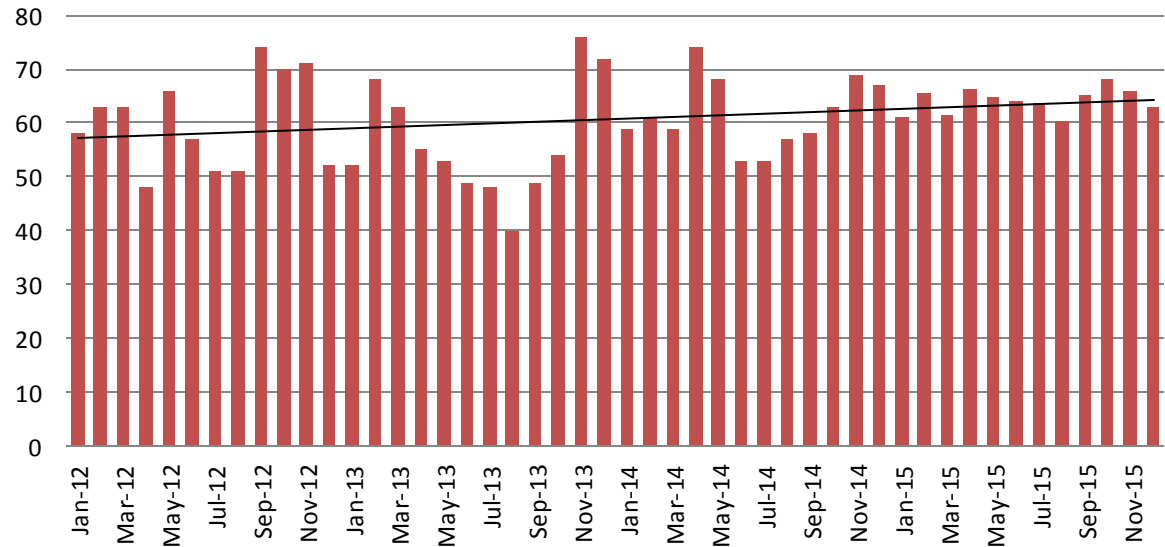
Dec.	Dec. YTD Average
2012 = 241	2012 = 295
2013 = 211	2013 = 248
2014 = 206	2014 = 239
2015 = 232	2015 = 235

(data obtained from SG CO Dept. of Corrections)

JDF ADP: 2012 - present

Dec.	Dec. YTD Avg.
2012 = 52	2012 = 60
2013 = 72	2013 = 57
2014 = 67	2014 = 62
2015 = 63	2015 = 64

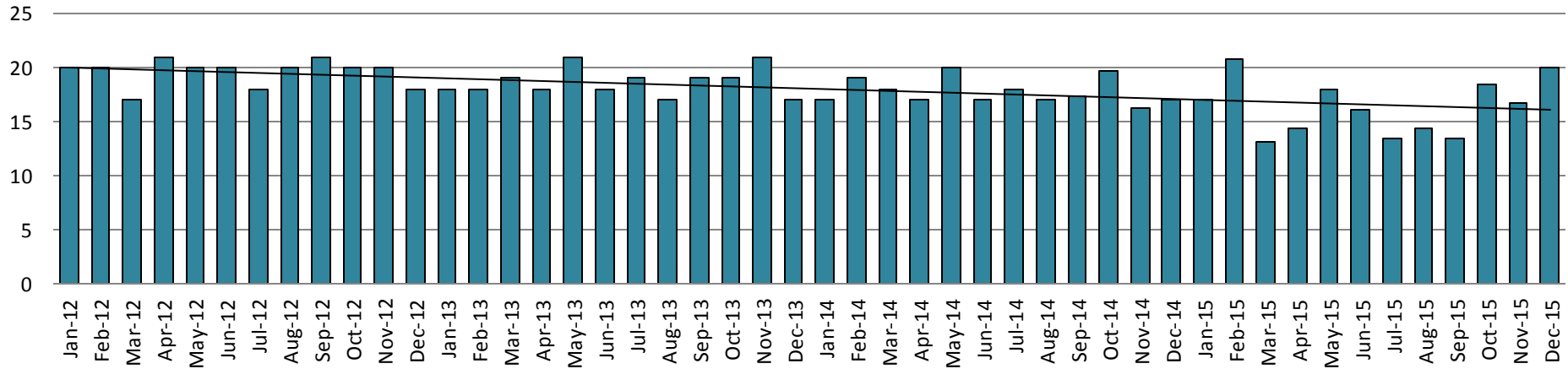
(data obtained from SG CO Dept. of Corrections)



Juvenile Detention Alternatives

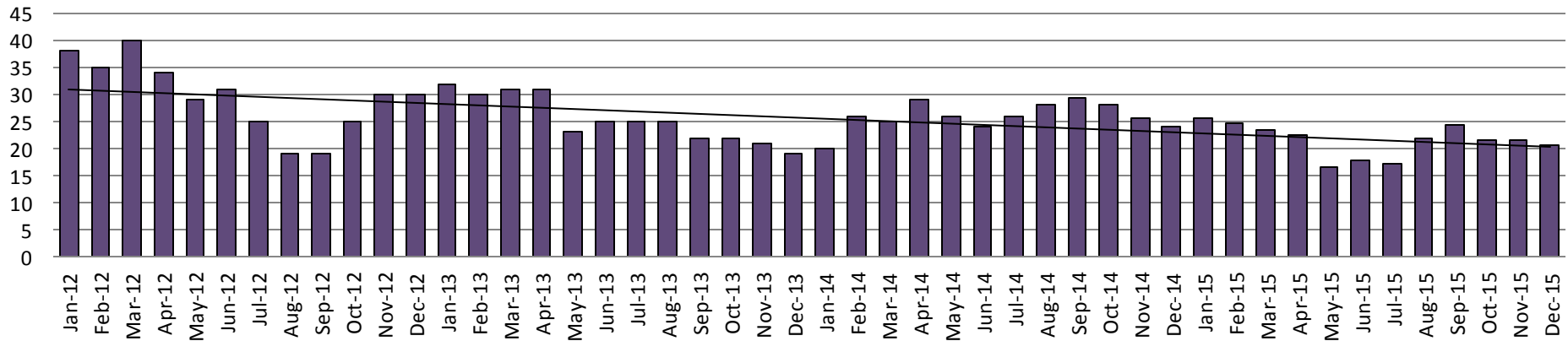
Juvenile Residential Facility (JRF)

ADP: 2012 - present



Home-Based Supervision

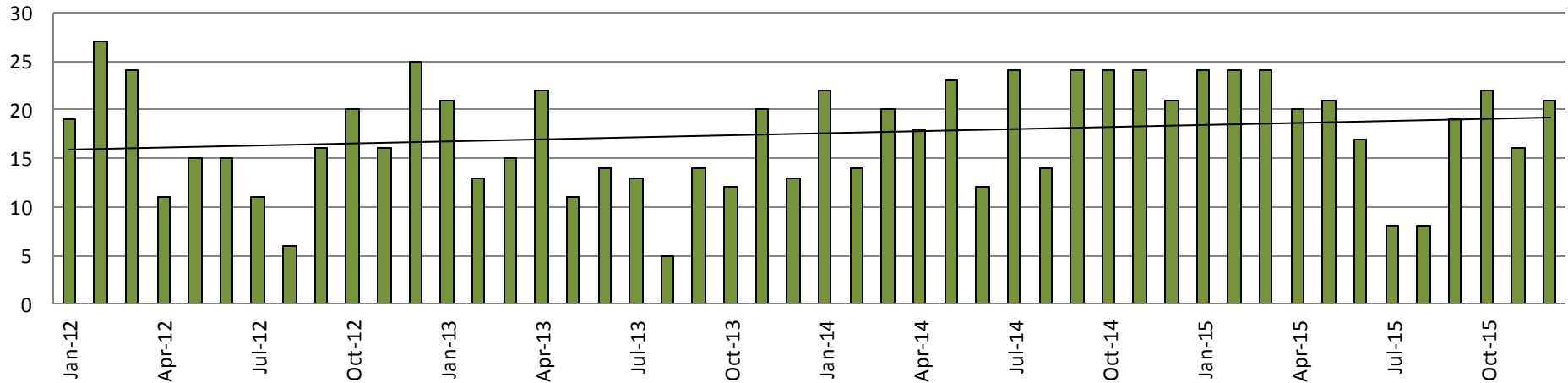
ADP: 2012 - present



Juvenile Detention Alternatives

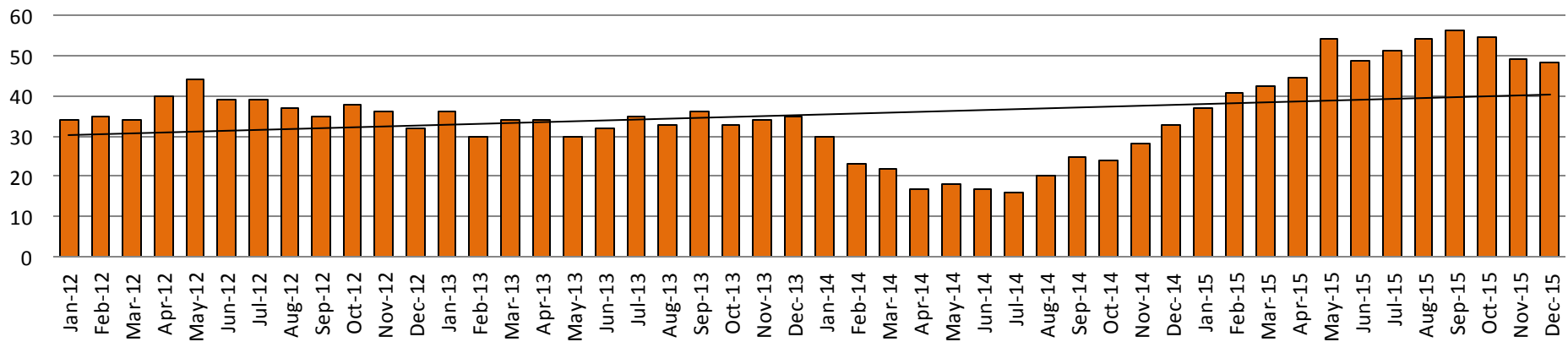
Weekend Alternative Detention Program

2012 - present



Detention Advocacy Case Management Services

ADP: 2012 - present



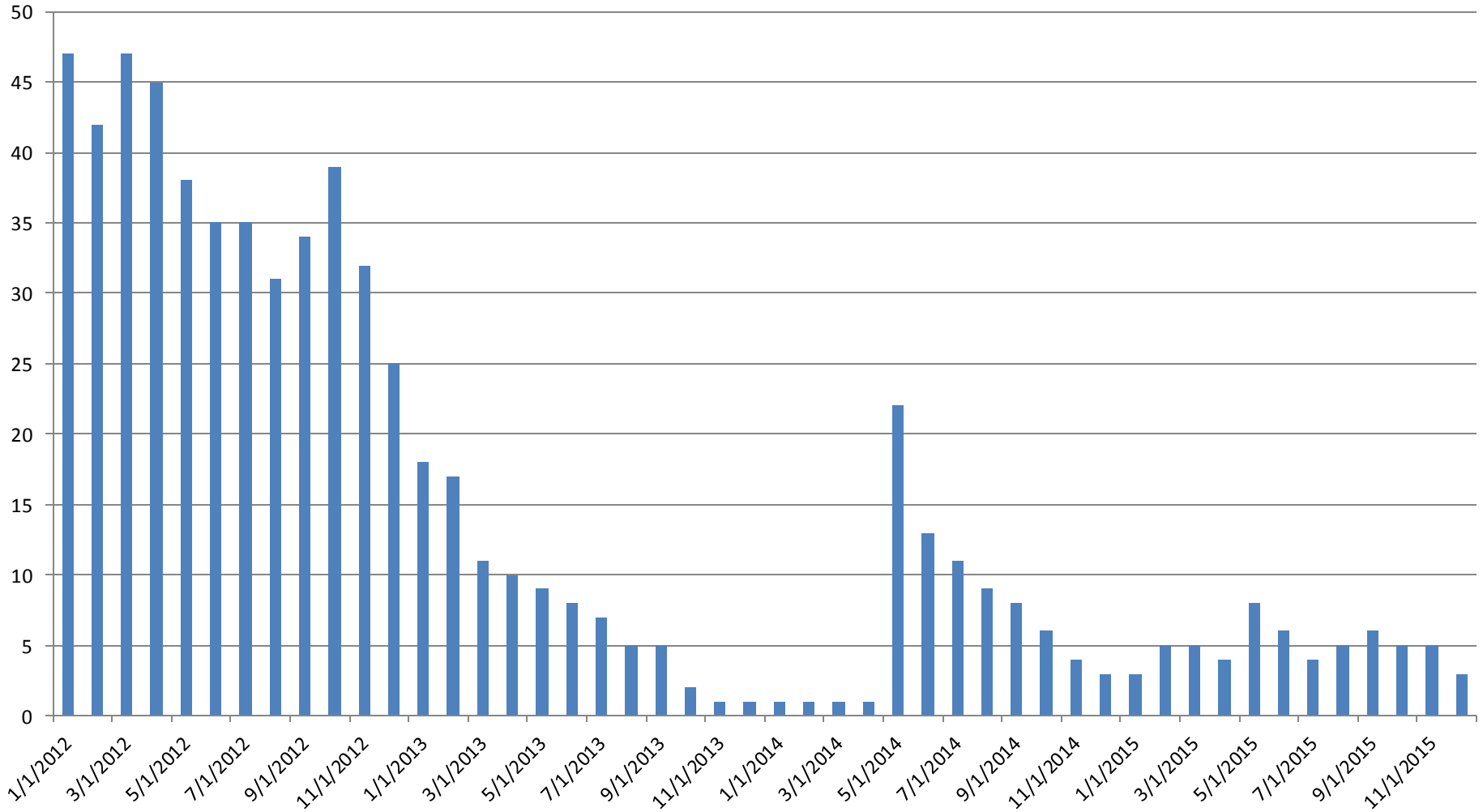
Juvenile Detention Services

December ADP	2012	2013	2014	2015
Juvenile Detention Facility	52	72	67	63
Juvenile Residential Facility	18	17	17	20
Home Based Supervision	30	19	24	21
Detention Advocacy Case Management Services	32	35	33	48
Weekend Alternative Detention Program (total)	25	13	21	21

December YTD AVERAGE	2012	2013	2014	2015
Juvenile Detention Facility	60	57	62	64
Juvenile Residential Facility	20	19	18	16
Home Based Supervision	30	26	26	21
Detention Advocacy Case Management Services	37	34	23	48
Weekend Alternative Detention Program	17	14	20	19

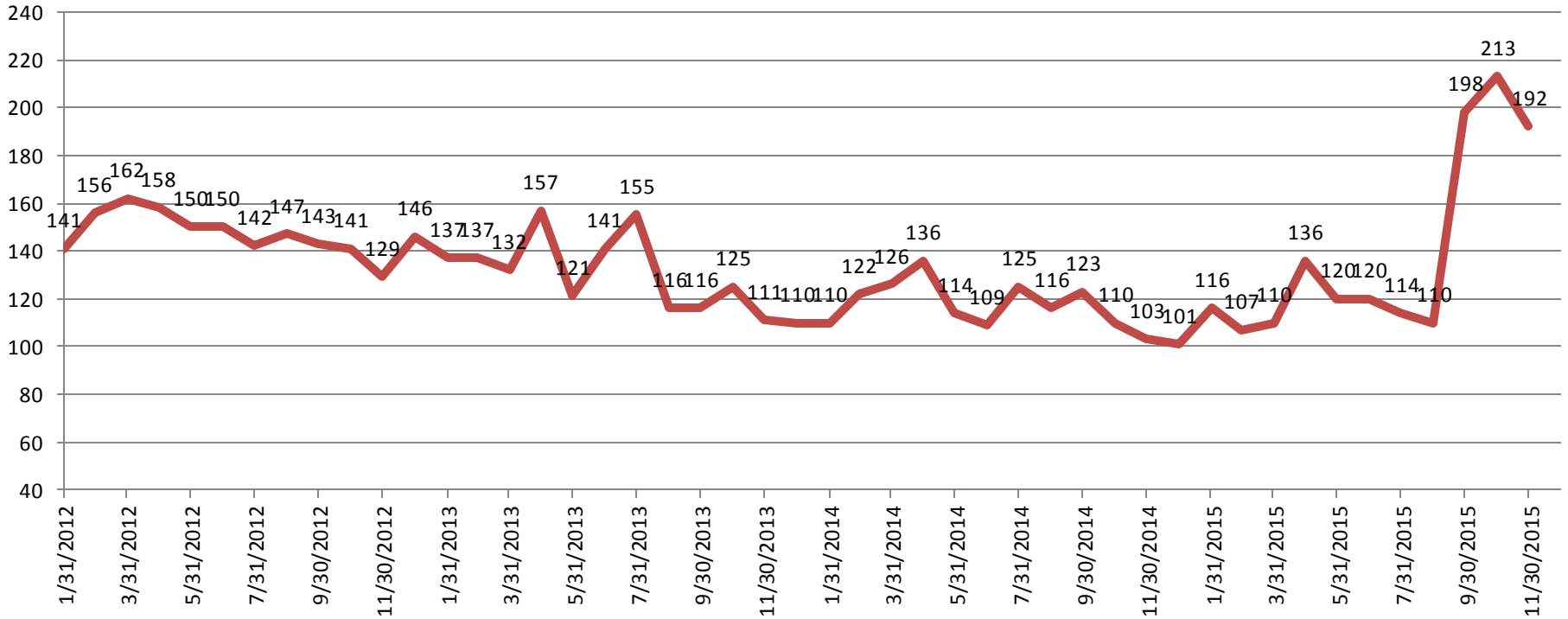
Monthly Jail Snapshot: August 31, 2015

BICE Holds 2012-Present



Monthly Jail Snapshot: March 31, 2015

Felony Commitments: February 2012 - present



December:

2012 = 129

2013 = 111

2014 = 103

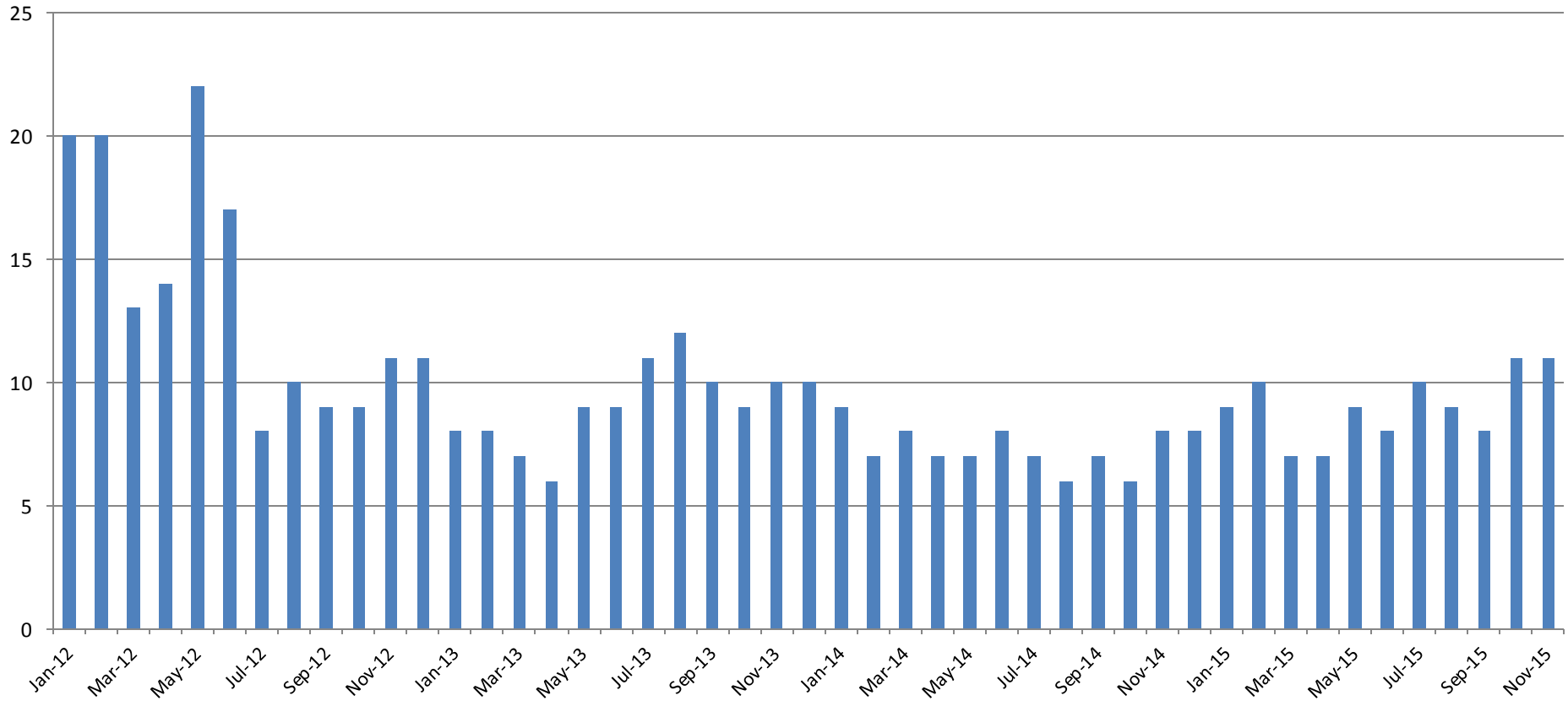
2015 = 192

(data obtained from SG CO DIO)



Sedgwick County...
working for you

Journal Entry Completion (Average Days) January 2013-Present



This data is always reported a month behind

