

Criminal Justice Coordinating Council

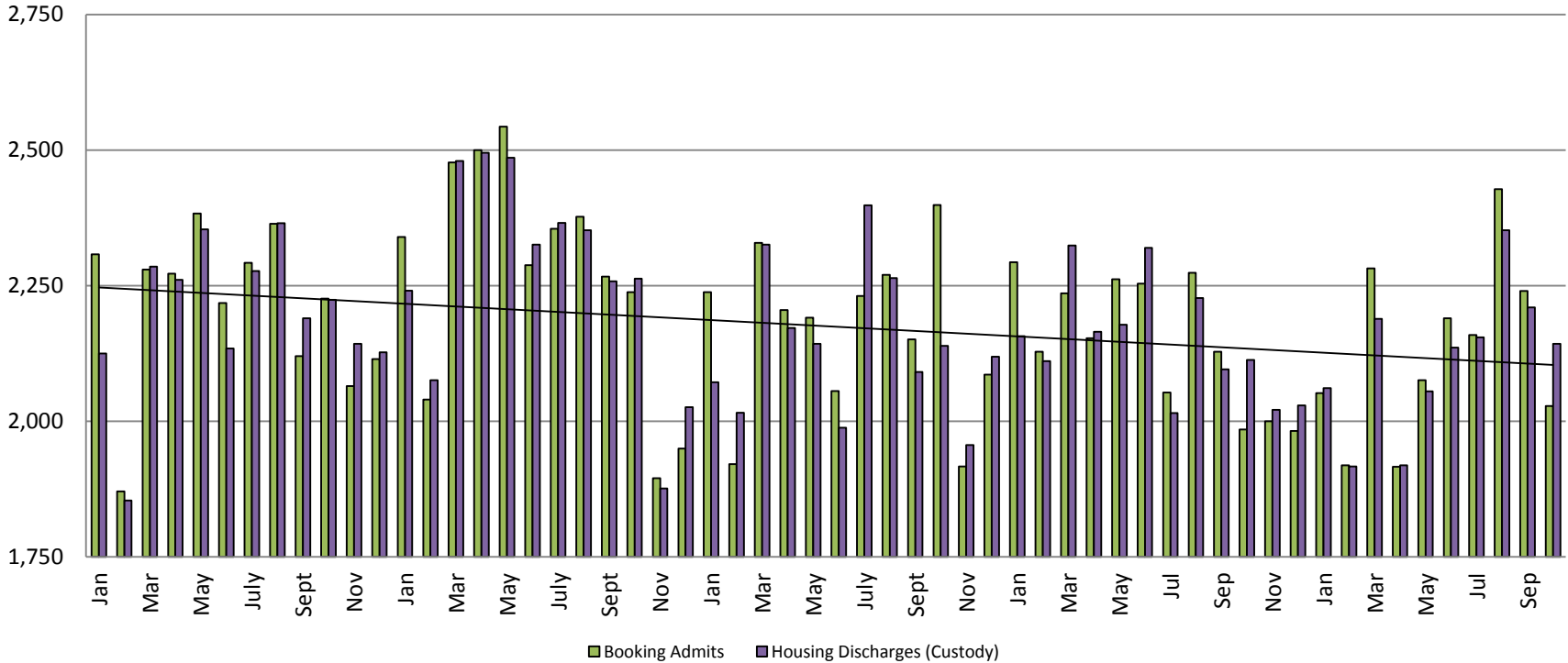
Population Report & Program Trends

November 2017



Detention Facility

Booking Admits & Housing Discharges from Custody January 2013 - Present



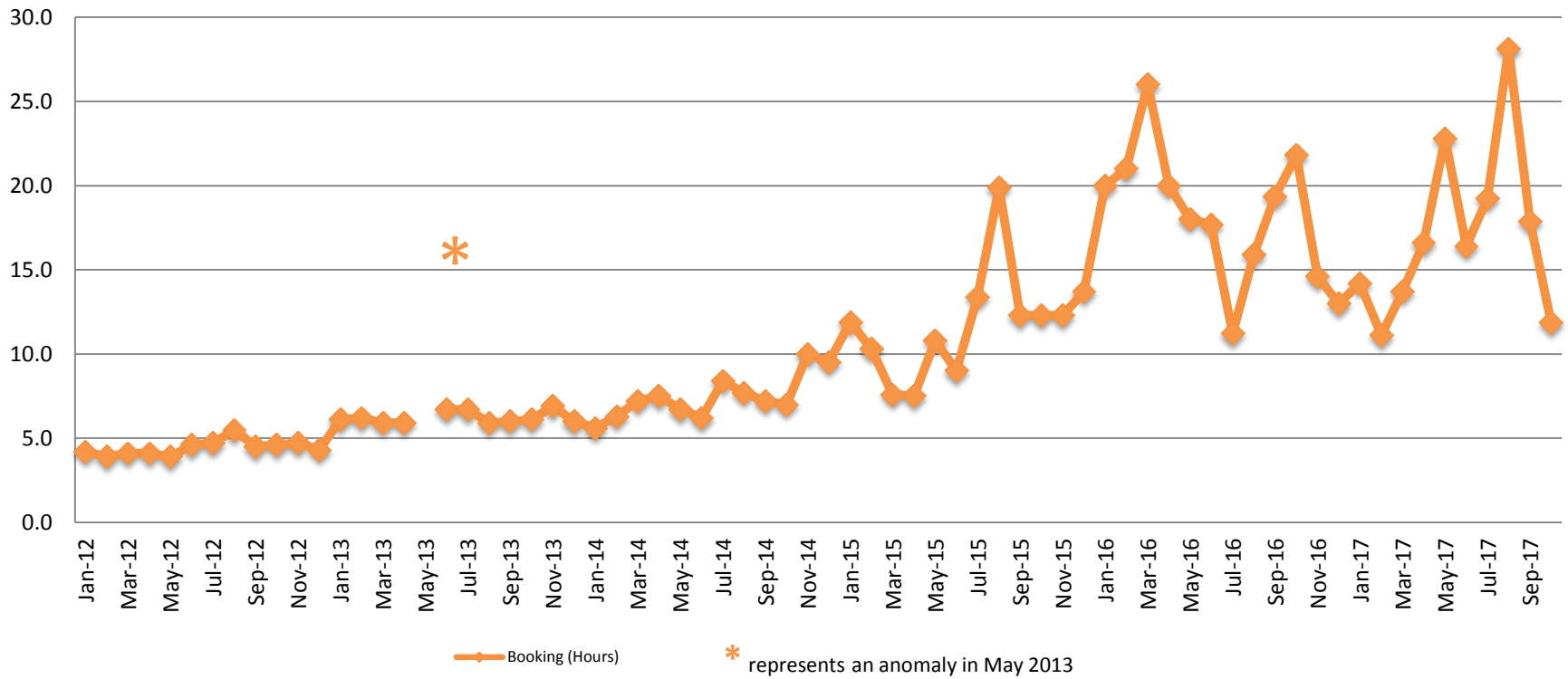
Bookings for October

2015 = 2,399
 2016 = 1,985
 2017 = 2,028

Housing Discharges for October

2015 = 2,139
 2016 = 2,113
 2017 = 2,143

Average Length of Stay: Booking (Hours) January 2012 - Present



October

2012 = 4.6	2015 = 12.3
2013 = 6.1	2016 = 21.8
2014 = 7.0	2017 = 11.9

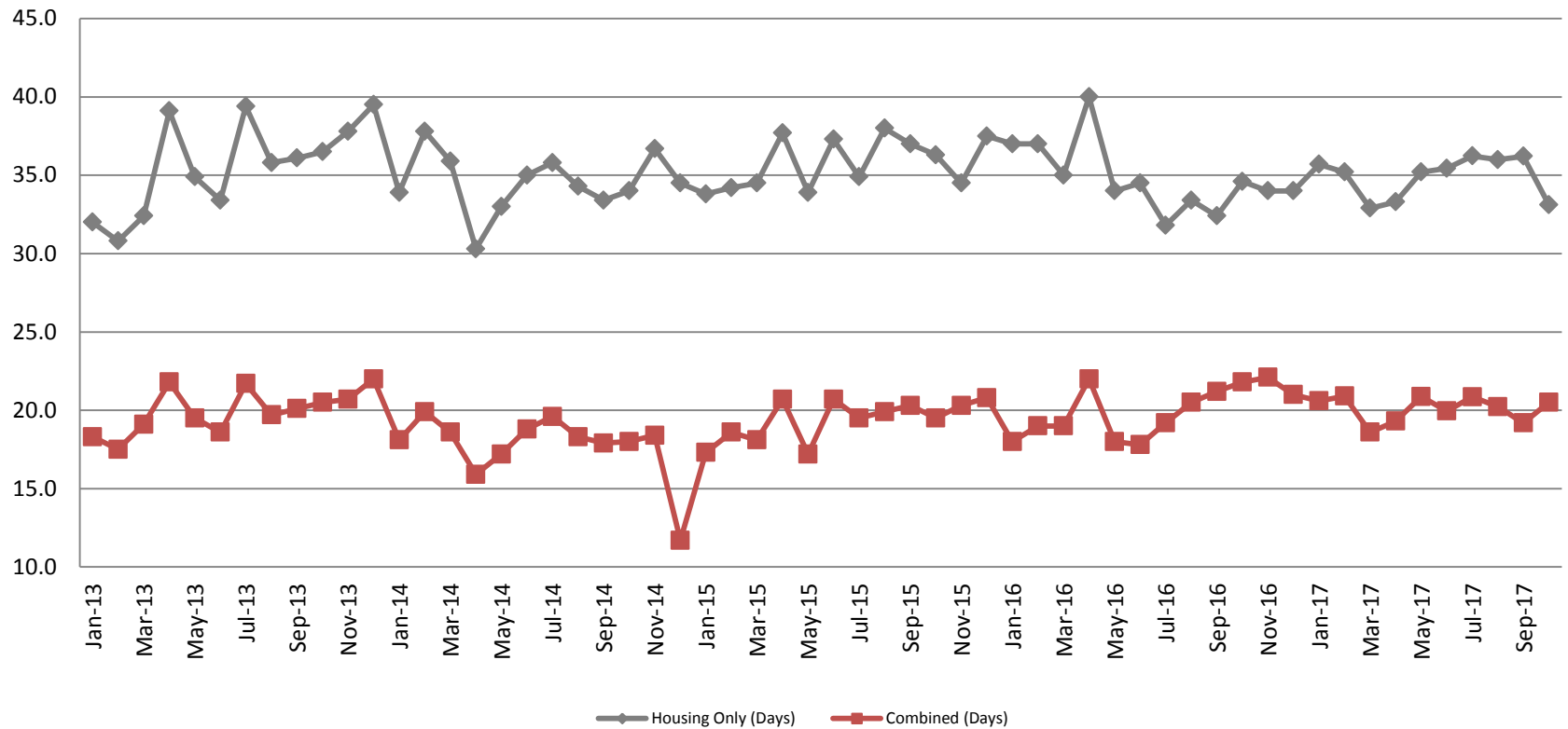
October YTD Avg.

2012 = 4.4	2015 = 11.5
2013 = 7.2	2016 = 19.1
2014 = 7.0	2017 = 17.2



Average Length of Stay: Housing & Combined (Days)

January 2013 - Present



October Housing

2013 = 36.5
 2014 = 34.0
 2015 = 36.3
 2016 = 34.6
 2017 = 33.1

October Housing YTD Avg.

2013 = 35.0
 2014 = 34.3
 2015 = 35.8
 2016 = 35.0
 2017 = 34.9

October Combined

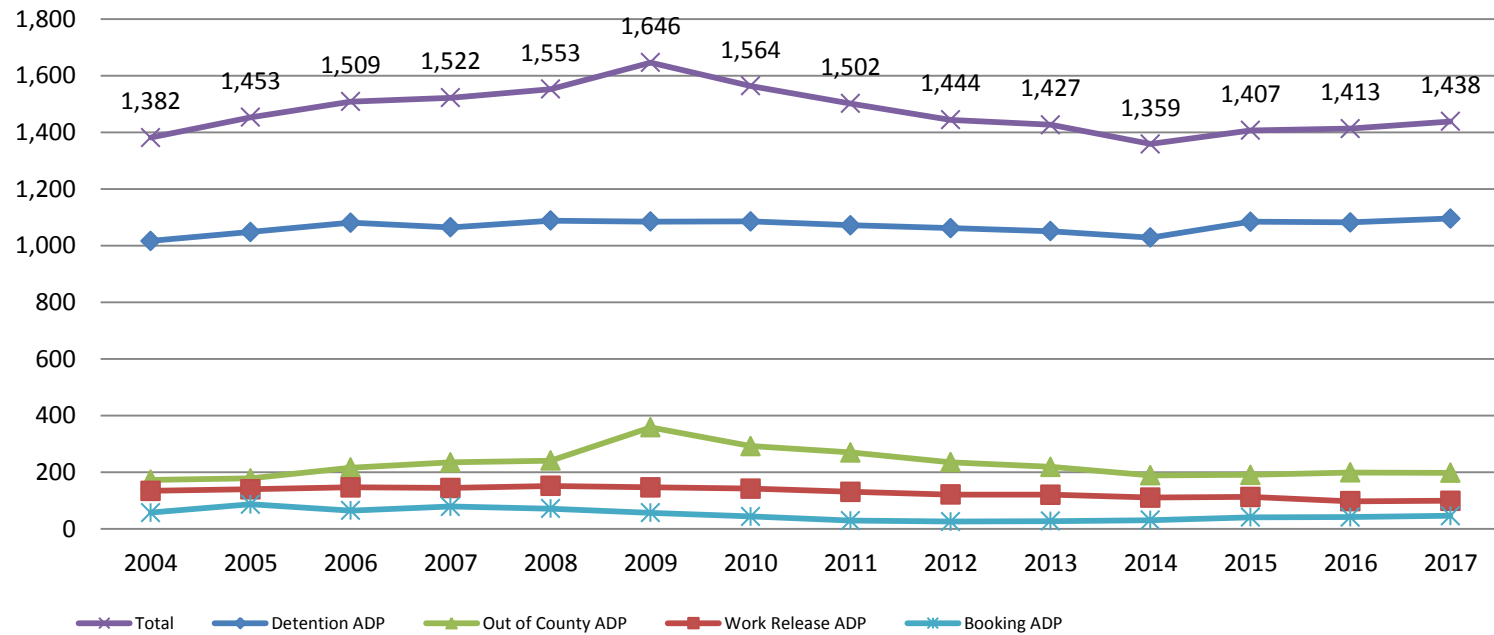
2013 = 20.5
 2014 = 18.0
 2015 = 19.5
 2016 = 21.8
 2017 = 20.5

October Combined YTD Avg.

2013 = 19.7
 2014 = 18.2
 2015 = 19.2
 2016 = 19.7
 2017 = 20.1

Jail: Annual Average Daily Population (ADP)

TRENDS: Booking, Detention, Work Release, & Out of County
Annual ADP: 2004 - present



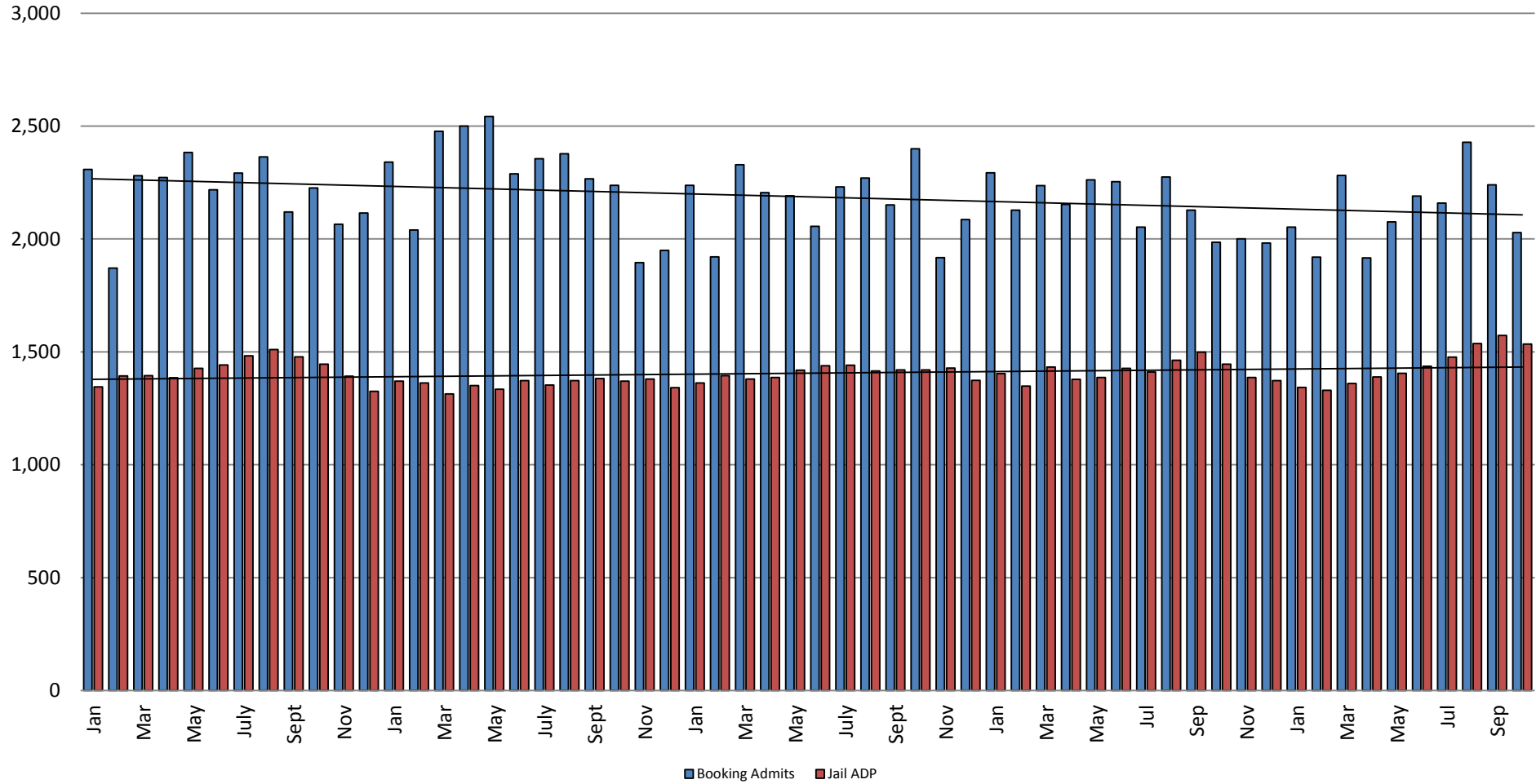
TOTAL MONTHLY ADP: JAIL (Booking, Detention Facility, Work Release, & Out of County) 2007 - present



This slide shows total monthly ADP for individuals in booking, detention, work release and out-of county (combined)



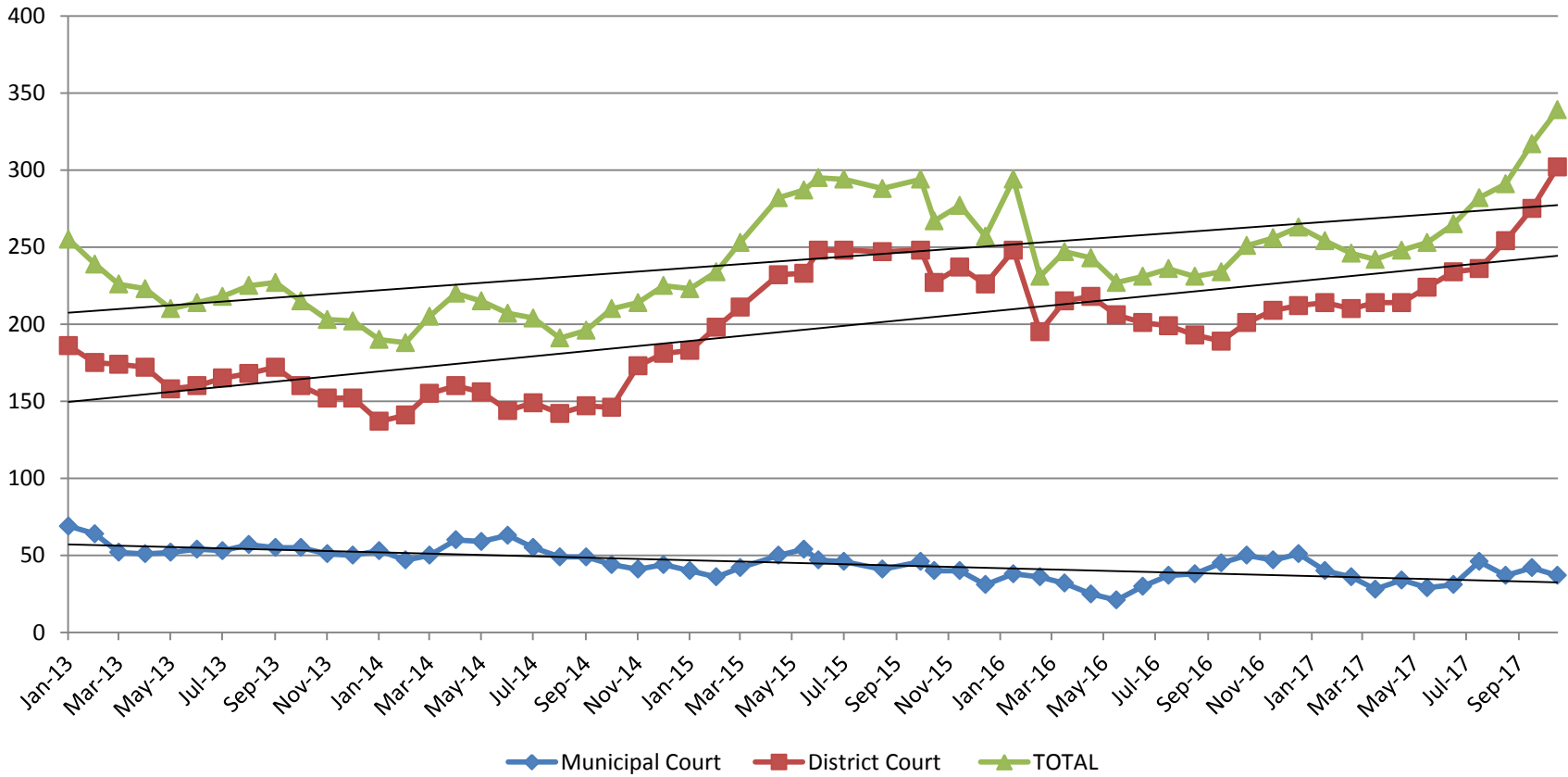
Booking Admits & Total Monthly ADP (Jail): 2013 - present



Jail includes individuals in booking, detention, work release and out-of county (combined)

(data obtained from detention facility)

Pretrial Services Program (PSP) Monthly ADP: January 2013 - Present

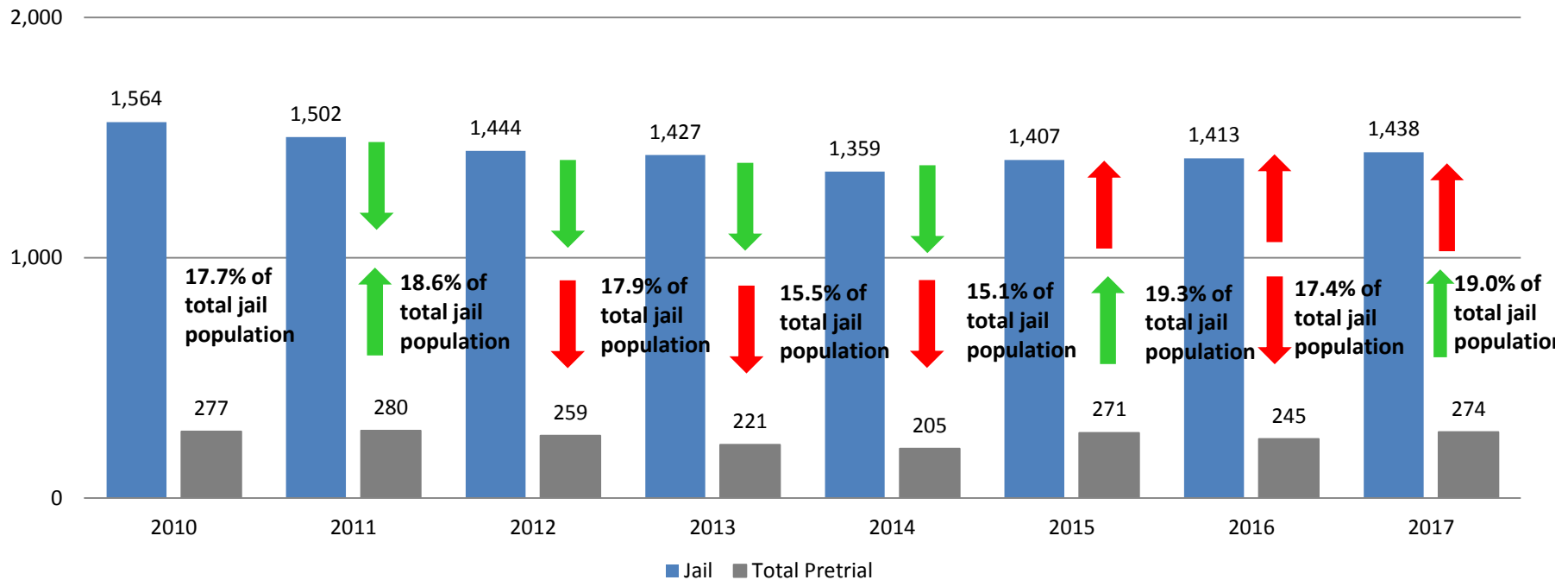


October	2013	2014	2015	2016	2017
Municipal Court	55	44	40	50	37
District Court	160	146	227	201	302
TOTAL	215	210	267	251	339

October YTD Avg.	2013	2014	2015	2016	2017
Municipal Court	56	53	44	35	36
District Court	169	148	228	207	238
TOTAL	225	203	272	243	274

Correlation: Total & PSP

Total Annual ADP: 2010 - Present

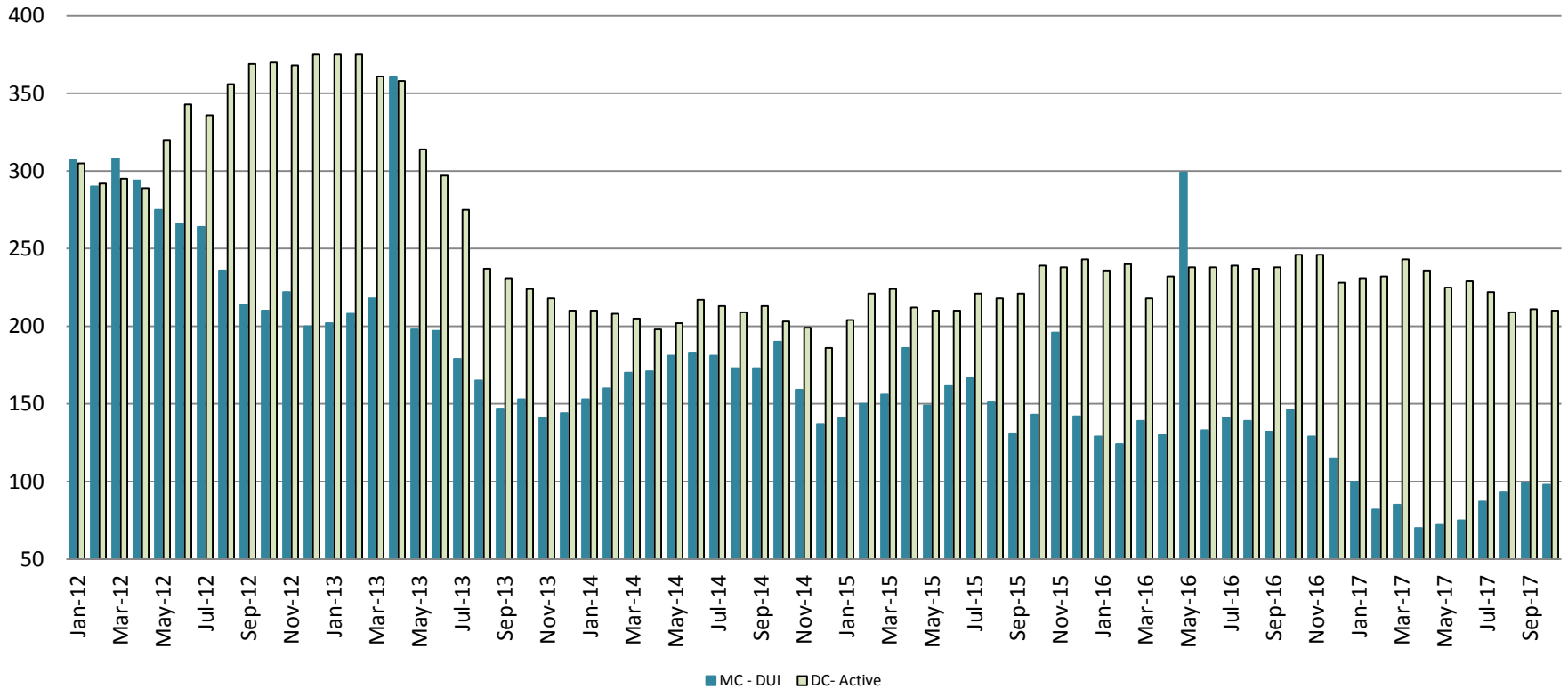


Arrows represent the overall increase/decrease of the population from year to year

Jail includes individuals in booking, detention, work release and out-of county (combined)



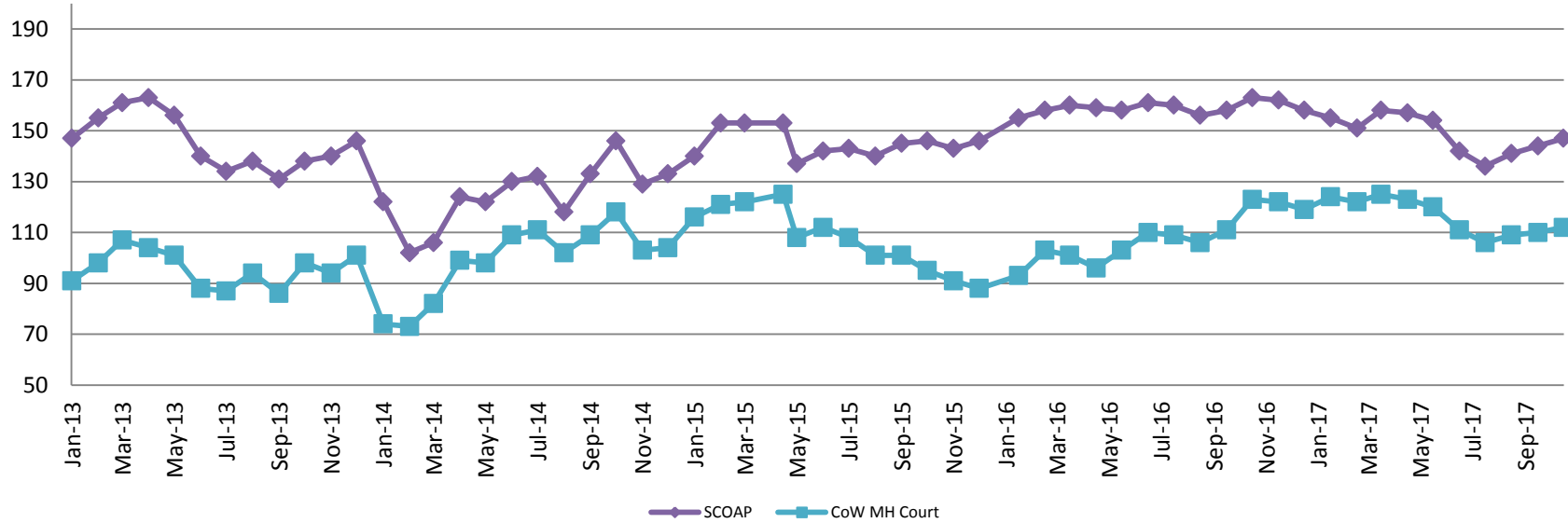
Diversion - Active Caseload January 2012 - Present



October	2013	2014	2015	2016	2017
Municipal Court- DUI	153	190	143	146	98
District Court- Active	224	203	239	246	210

October YTD Avg.	2013	2014	2015	2016	2017
Municipal Court	203	174	154	151	86
District Court	305	208	218	236	225

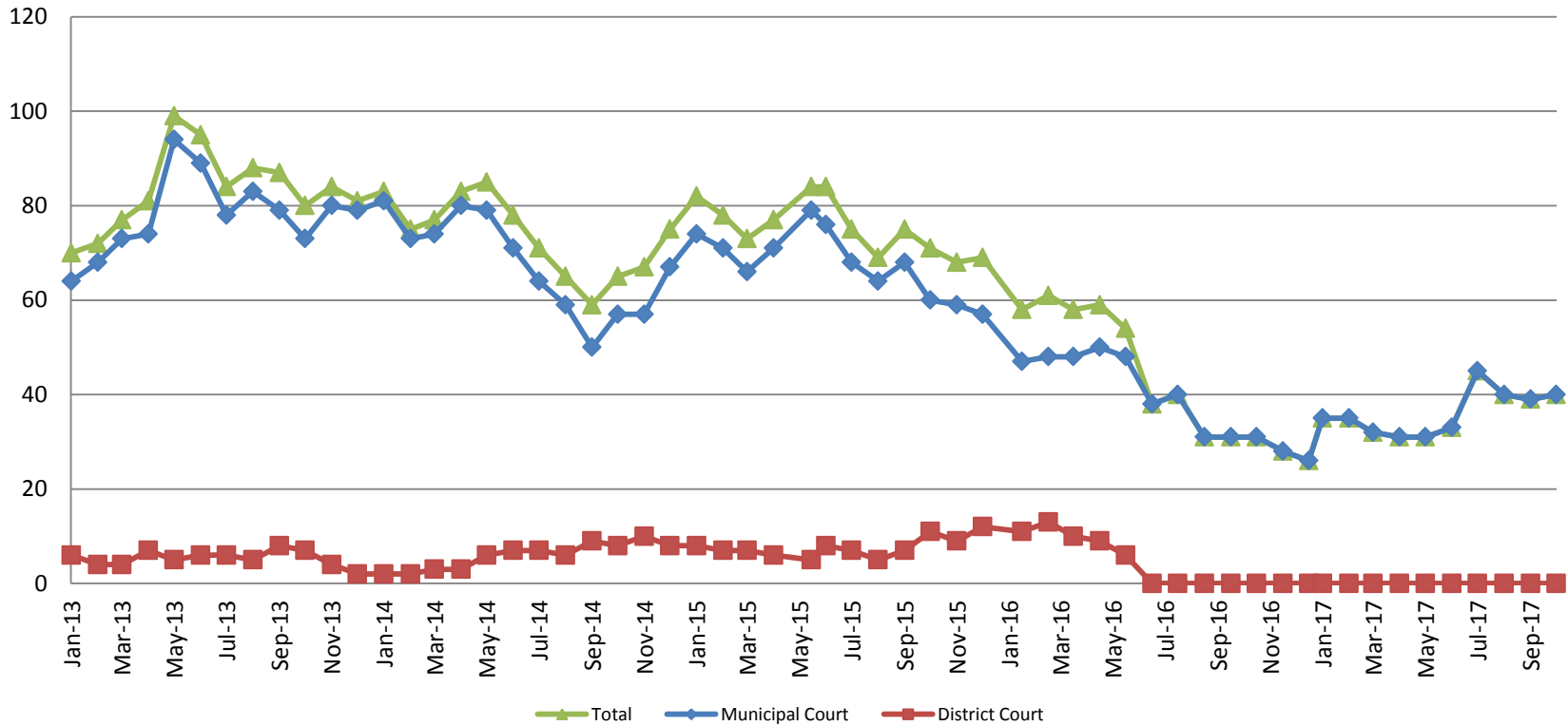
Mental Health - ADP 2013 - present



October:	2013	2014	2015	2016	2017
SCOAP	138	146	146	163	147
CoW – MH Court	98	118	95	123	112
October YTD Avg.	2013	2014	2015	2016	2017
SCOAP	146	124	145	159	149
CoW – MH Court	95	98	111	106	116



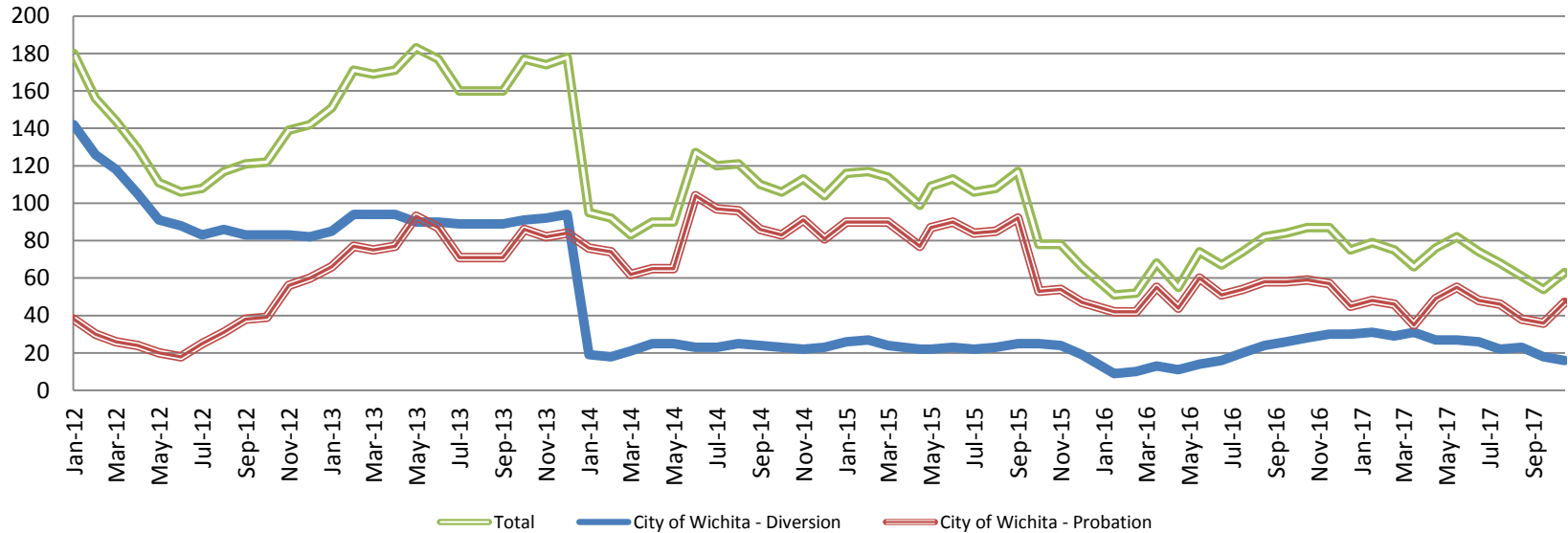
Day Reporting - Active Caseload 2013-present



October	2013	2014	2015	2016	2017
Municipal Court	73	57	60	31	40
District Court	7	8	11	0*	0*
TOTAL	80	65	71	31	40
October YTD Avg.	2013	2014	2015	2016	2017
Municipal Court	78	69	70	41	36
District Court	6	5	7	0*	0*
TOTAL	83	74	77	46	36



Drug Court - City of Wichita ADP: 2012 - present



October CoW Diversion

2013 = 91
2014 = 23
2015 = 25
2016 = 28
2017 = 16

October YTD Avg.

2013 = 91
2014 = 23
2015 = 24
2016 = 17
2017 = 25

October CoW Probation

2013 = 86
2014 = 83
2015 = 53
2016 = 59
2017 = 47

October YTD Avg.

2013 = 77
2014 = 81
2015 = 84
2016 = 52
2017 = 45

October CoW Total

2013 = 177
2014 = 106
2015 = 78
2016 = 87
2017 = 63

October YTD Avg.

2013 = 168
2014 = 103
2015 = 108
2016 = 69
2017 = 70

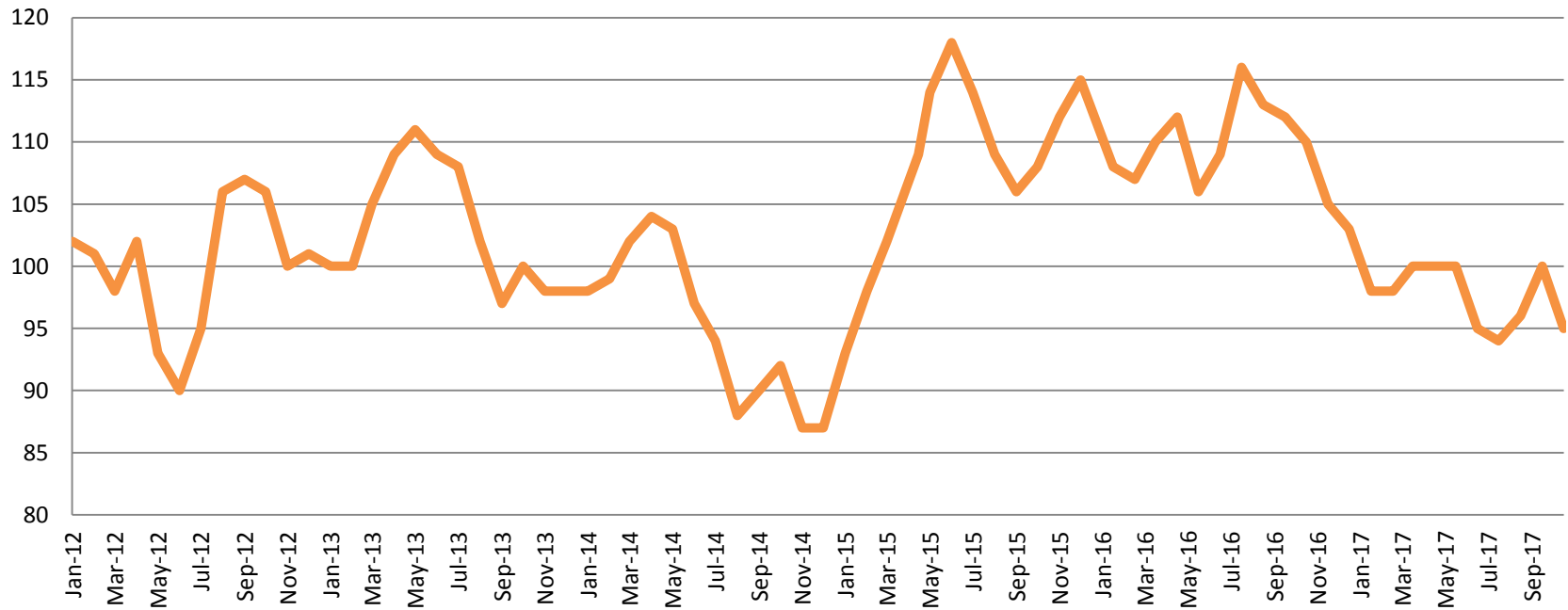


Sedgwick County...

working for you

(data obtained from CoW)

Drug Court - Sedgwick County ADP: 2012 - present



October SG CO

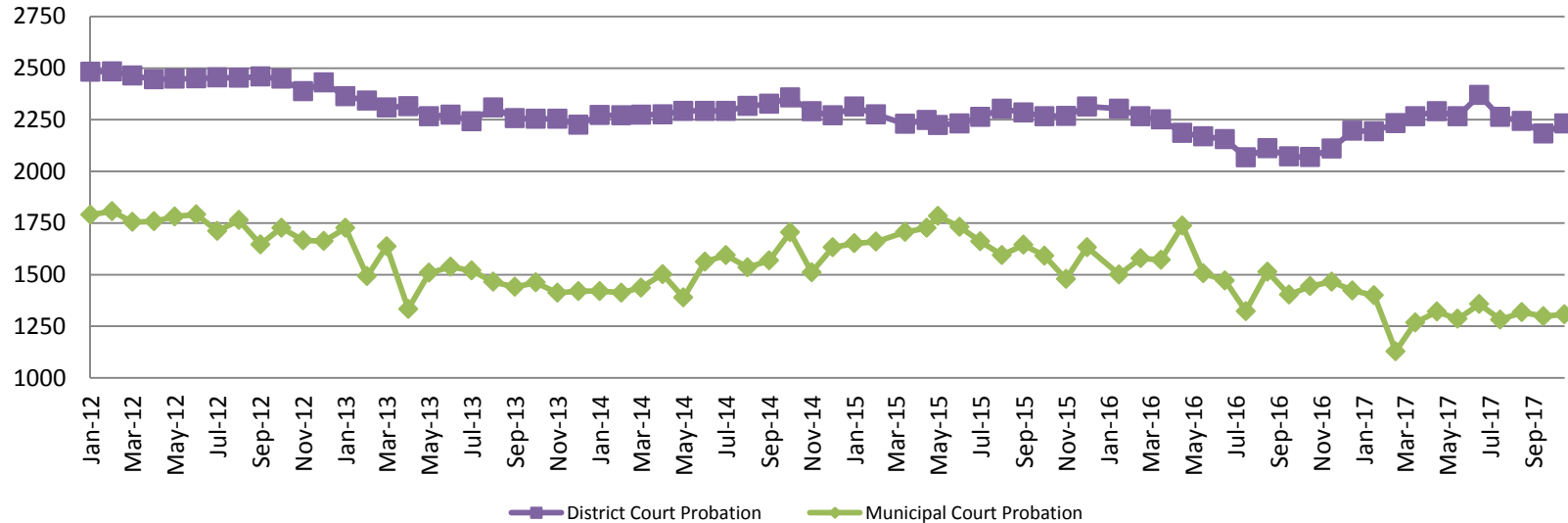
2013 = 100
 2014 = 92
 2015 = 108
 2016 = 110
 2017 = 95

October YTD Avg.

2013 = 104
 2014 = 97
 2015 = 107
 2016 = 110
 2017 = 98

(data obtained from Pretrial Services)

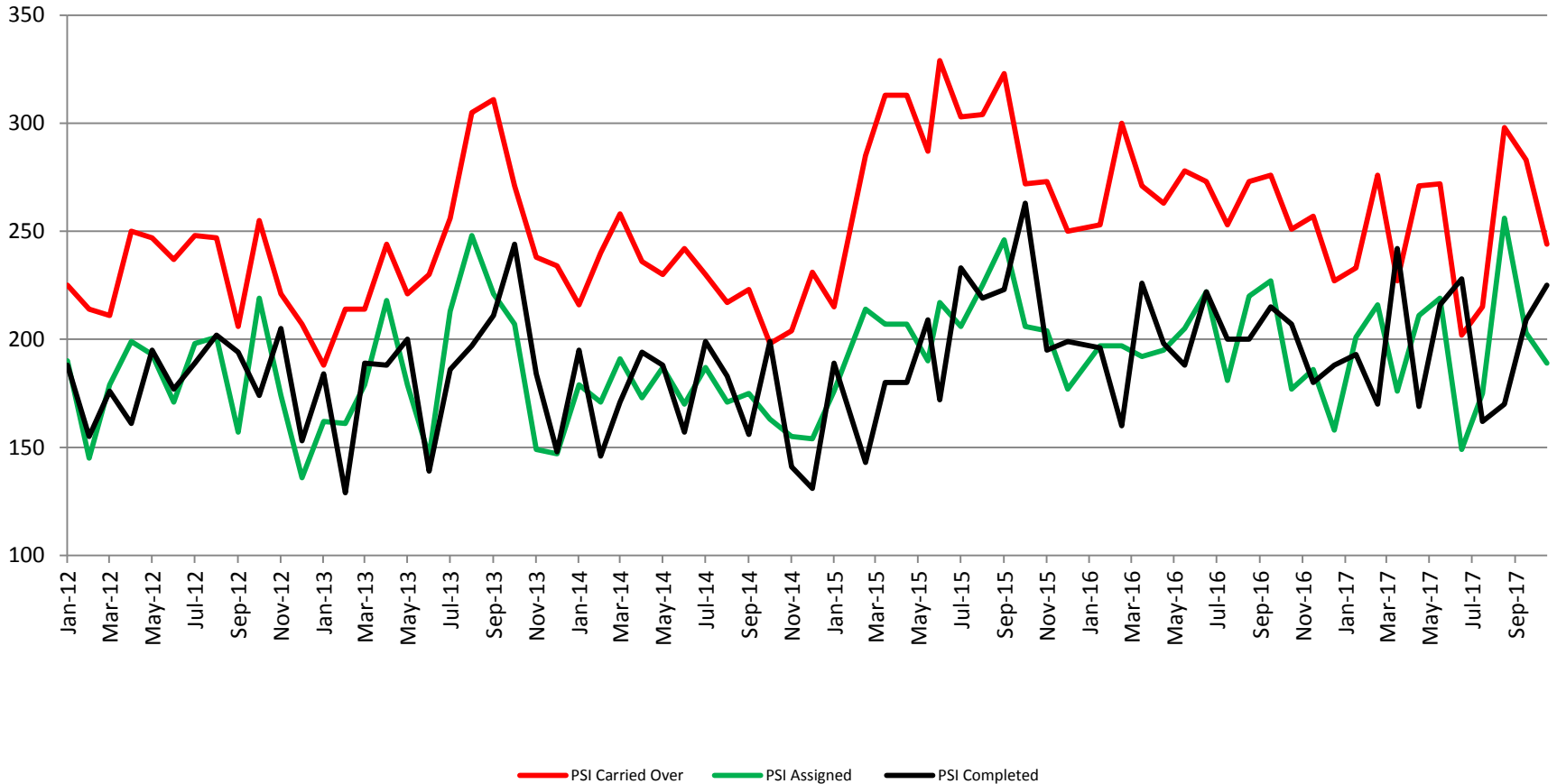
Probation - Active Caseloads 2012 - present



October	2013	2014	2015	2016	2017
District Court	2,255	2,358	2,267	2,069	2,231
Municipal Court	1,462	1,705	1,592	1,444	1,307
October YTD Avg.	2013	2014	2015	2016	2017
District Court	2,293	2,297	2,264	2,165	2,254
Municipal Court	1,512	1,513	1,675	1,505	1,297

(data obtained from CoW & District Court)

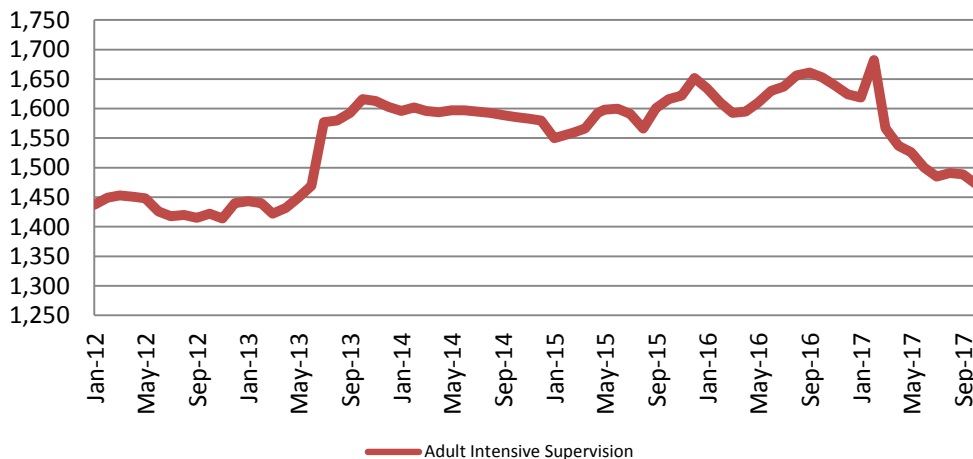
District Court Probation: Pre-Sentence Investigation 2012 - present



(data obtained from District Court)

Community Corrections

Adult Intensive Supervision Probation (AISP) ADP 2012 - present



October

2013 = 1,616
2014 = 1,586
2015 = 1,616
2016 = 1,653
2017 = 1,473

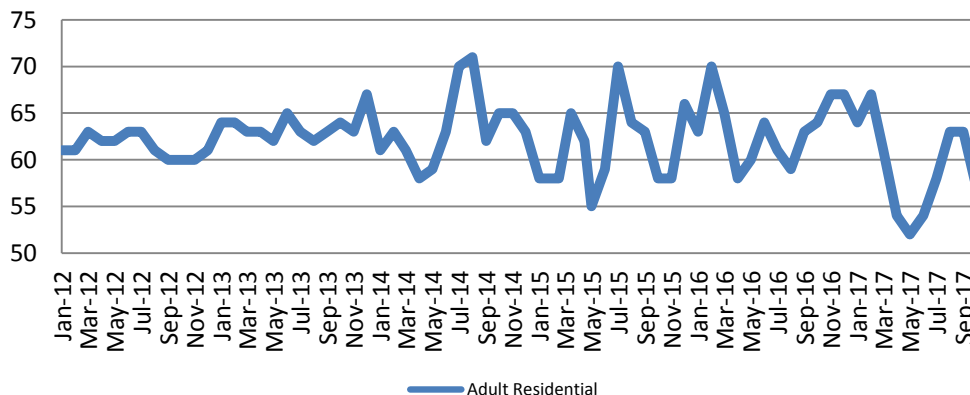
October YTD Avg.

2013 = 1,502
2014 = 1,595
2015 = 1,584
2016 = 1,628
2017 = 1,537

(data obtained from SG CO Dept. of Corrections)

*KDOC changed population count to include drug court, residential and AISP beginning July 2013.

Adult Residential: ADP 2012 - present



October

2013 = 64
2014 = 65
2015 = 58
2016 = 64
2017 = 57

October YTD Avg.

2013 = 63
2014 = 63
2015 = 61
2016 = 63
2017 = 59

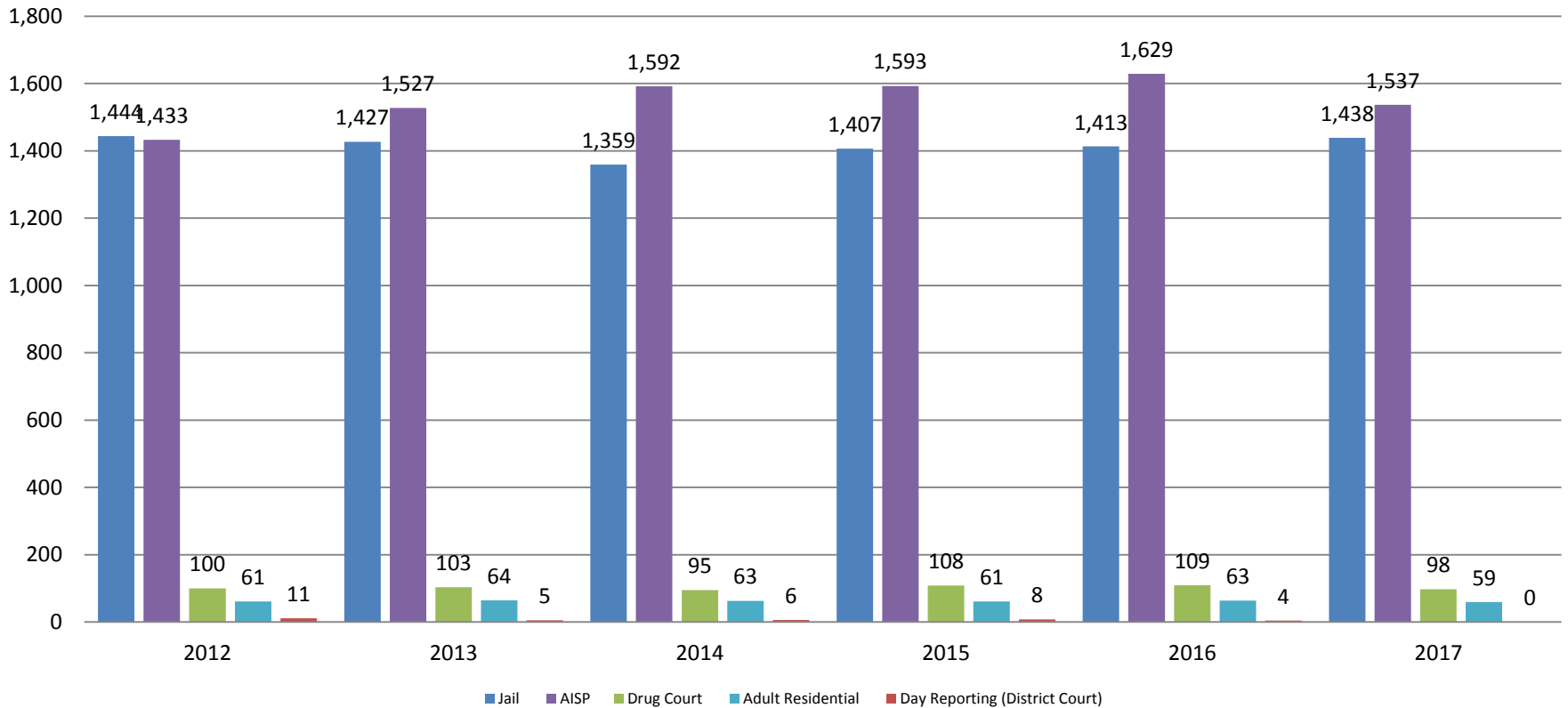
(data obtained from SG CO Dept. of Corrections)



Sedgwick County...
working for you

Correlation: Total & Sedgwick County Programs (Adult)

Total Annual ADP: 2012 - Present

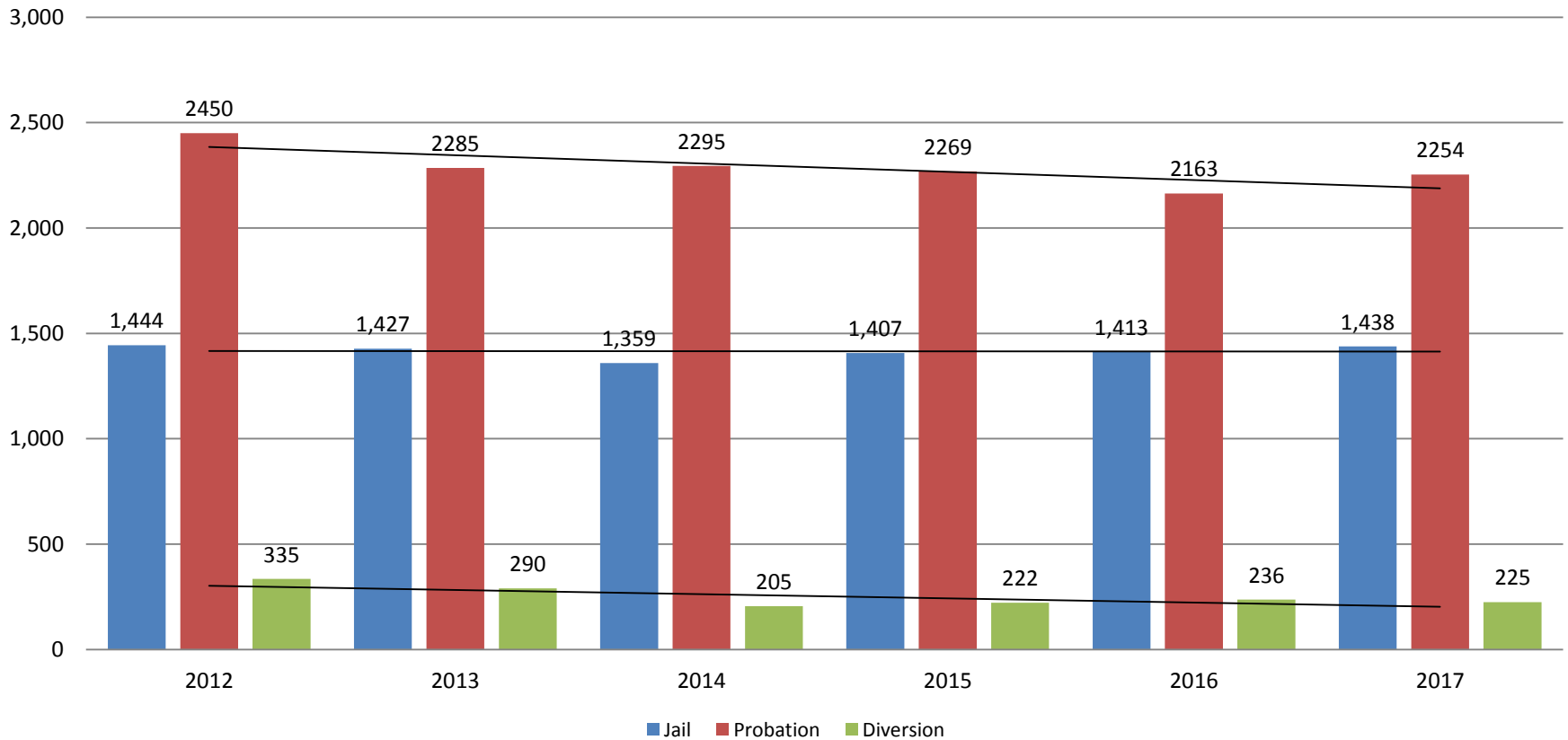


Jail includes individuals in booking, detention, work release and out-of county (combined)

(data obtained from detention facility, SG Dept. of Corrections, Pretrial Services, & CoW)

Correlation: Total & District Court Programs

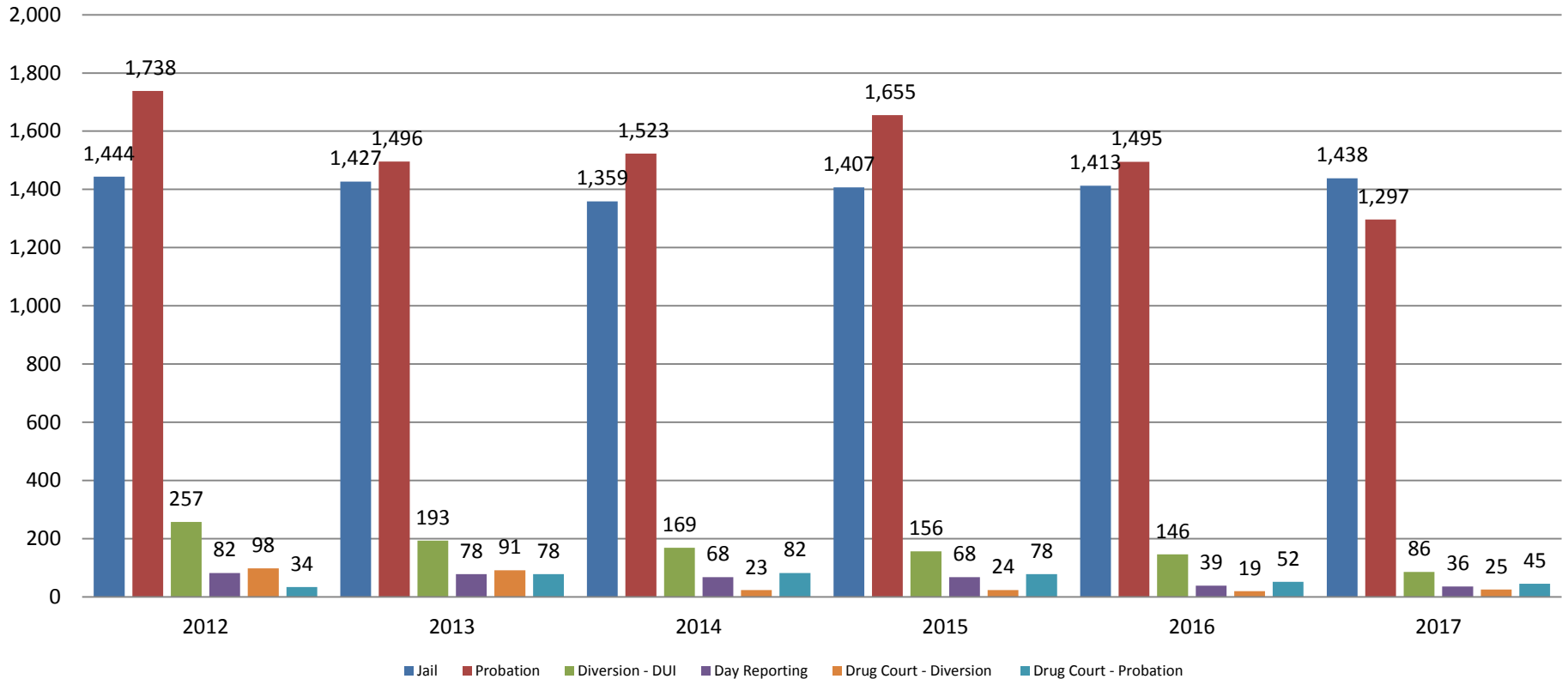
Total Annual ADP: 2012 - Present



Jail includes individuals in booking, detention, work release and out-of county (combined)

Correlation: Total & City of Wichita / Municipal Court Programs

Total Annual ADP: 2012 - present

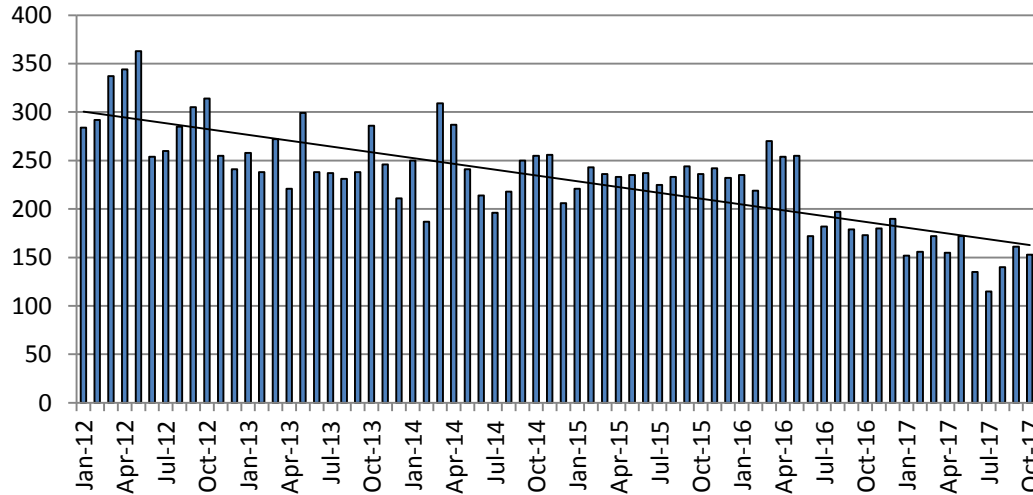


Jail includes individuals in booking, detention, work release and out-of county (combined)



Juvenile

JIAC Intakes: 2012 - present



October

2013 = 286
 2014 = 255
 2015 = 236
 2016 = 173
 2017 = 153

October YTD Average

2013 = 252
 2014 = 241
 2015 = 234
 2016 = 214
 2017 = 151

(data obtained from SG CO Dept. of Corrections)

October

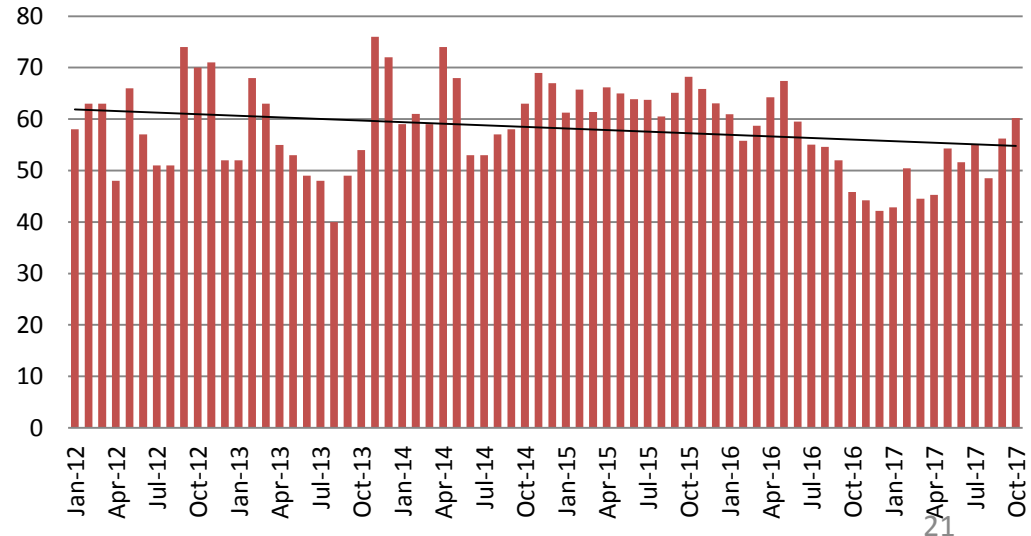
2013 = 54
 2014 = 63
 2015 = 68
 2016 = 46
 2017 = 60

October YTD Avg.

2013 = 53
 2014 = 61
 2015 = 64
 2016 = 57
 2017 = 51

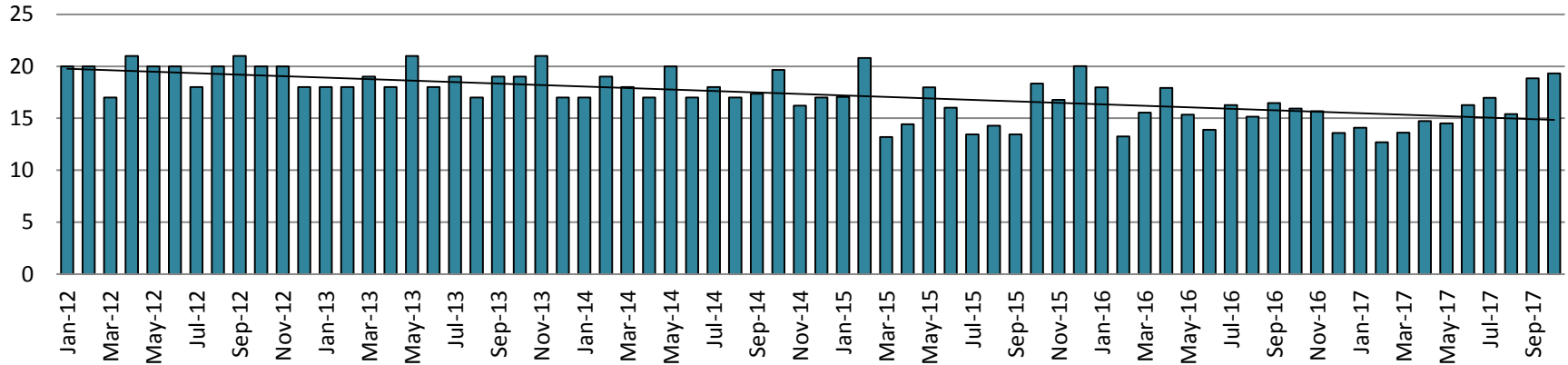
(data obtained from SG CO Dept. of Corrections)

JDF ADP: 2012 - present

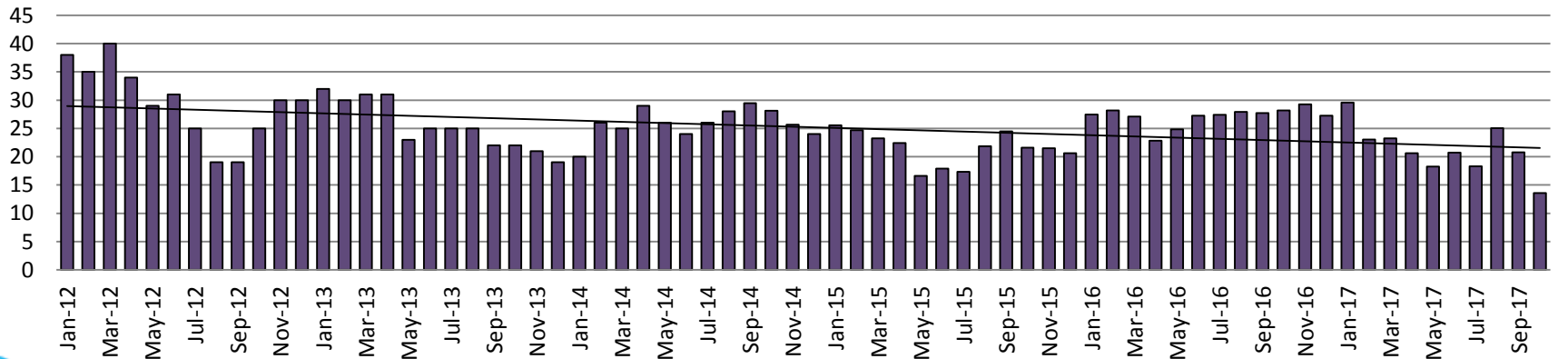


Juvenile Detention Alternatives

Juvenile Residential Facility (JRF) ADP: 2012 - present

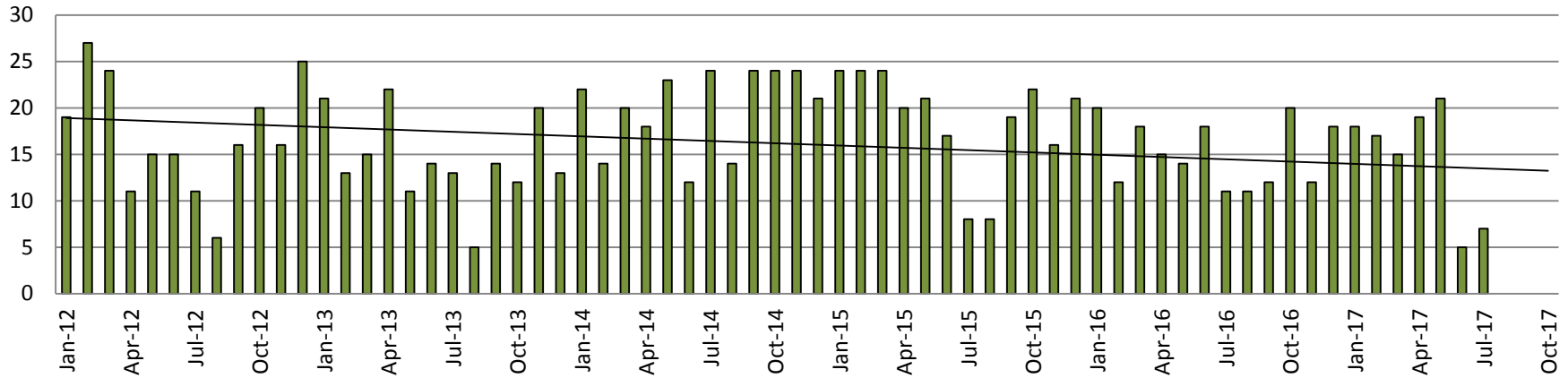


Home-Based Supervision ADP: 2012 - present

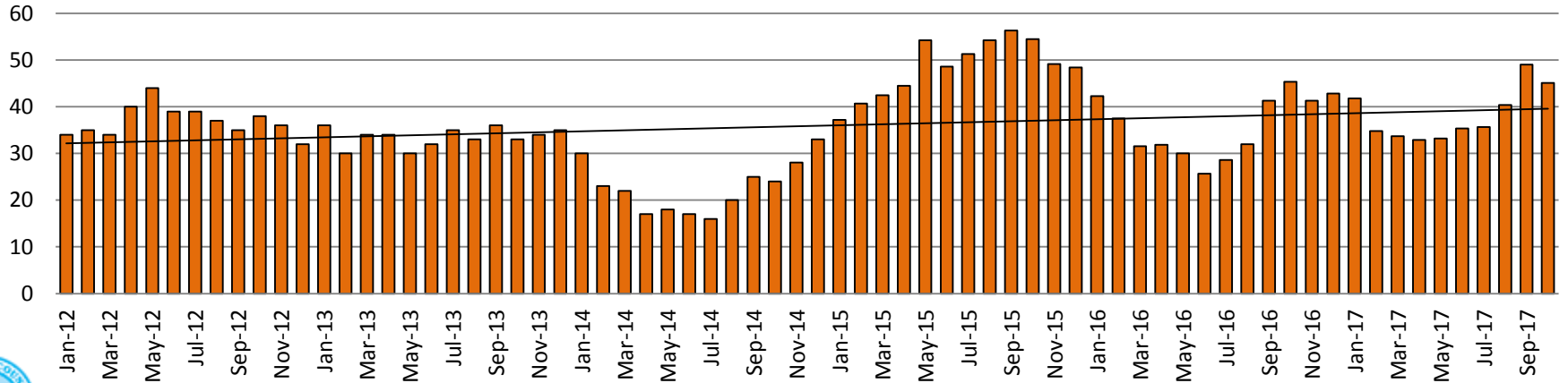


Juvenile Detention Alternatives

Weekend Alternative Detention Program 2012 - present



Detention Advocacy Case Management Services ADP: 2012 - present



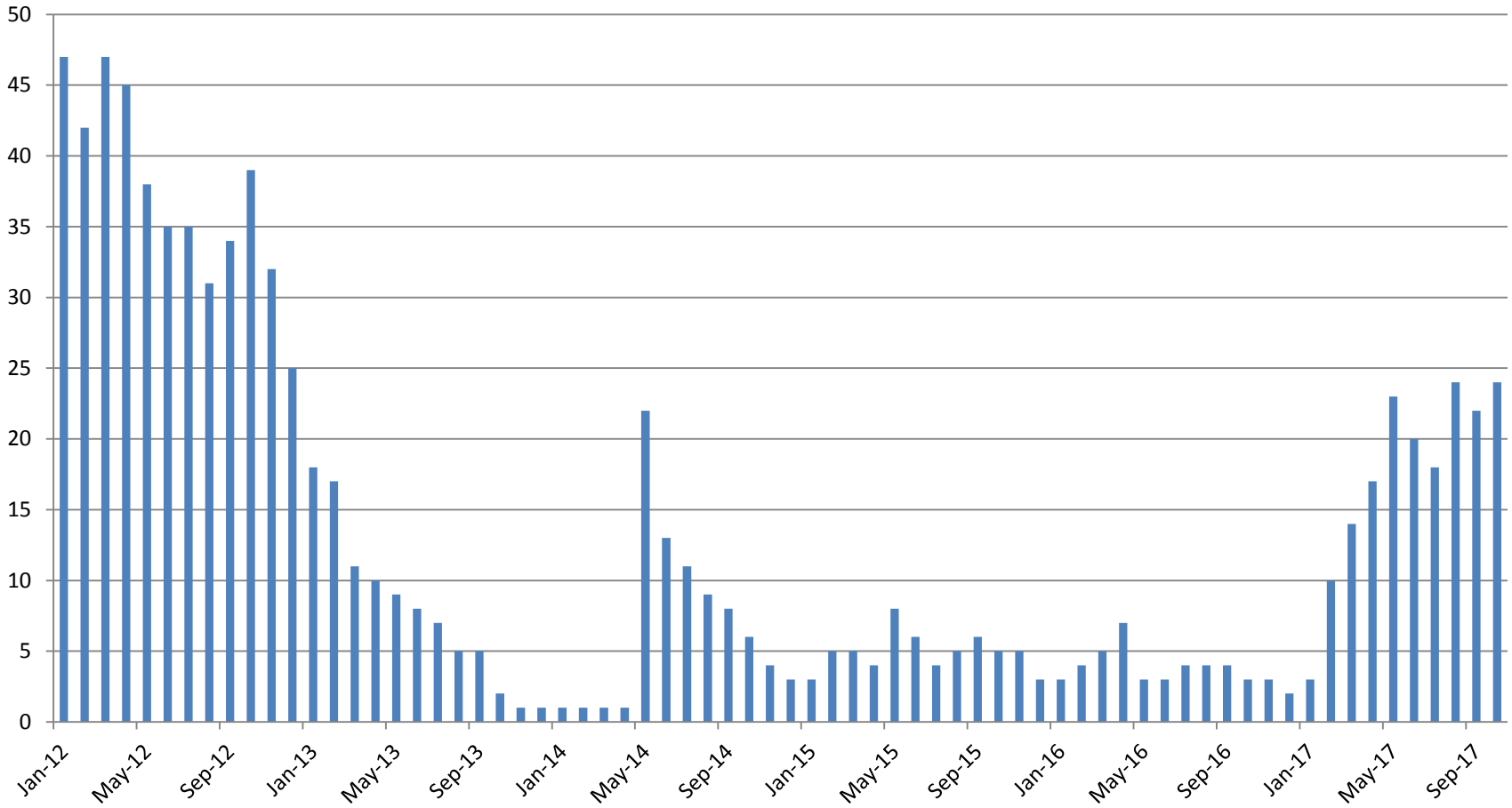
Juvenile Detention Services

September ADP	2014	2015	2016	2017
Juvenile Detention Facility	63	68	46	60
Juvenile Residential Facility	20	18	16	19
Home Based Supervision	28	22	28	14
Detention Advocacy Case Management Services	24	54	45	45
Weekend Alternative Detention Program (total)	24	22	20	0

September YTD AVERAGE	2014	2015	2016	2017
Juvenile Detention Facility	61	64	57	51
Juvenile Residential Facility	18	16	16	16
Home Based Supervision	26	22	27	21
Detention Advocacy Case Management Services	21	48	35	38
Weekend Alternative Detention Program	20	19	15	10

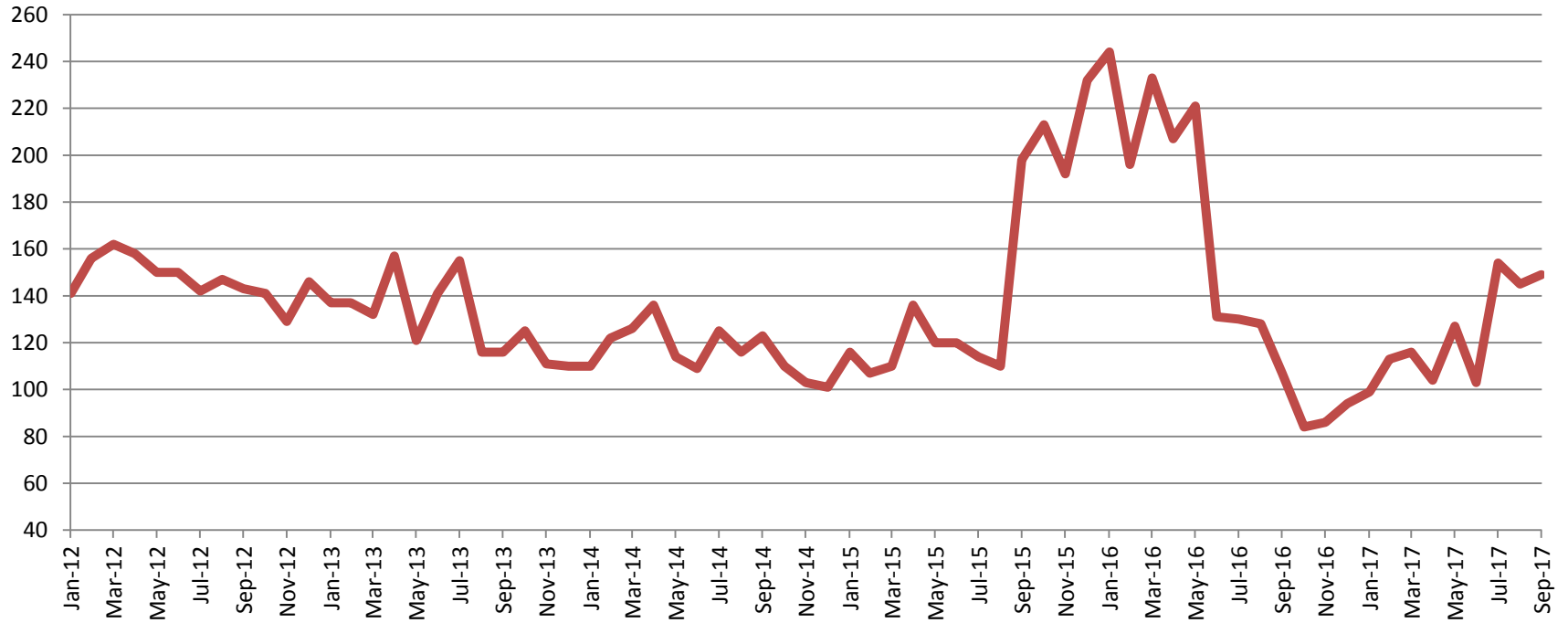
Monthly Jail Snapshot: October 31, 2017

BICE Holds 2012-Present



Monthly Jail Snapshot: October 31, 2017

Felony Commitments: February 2012 - present

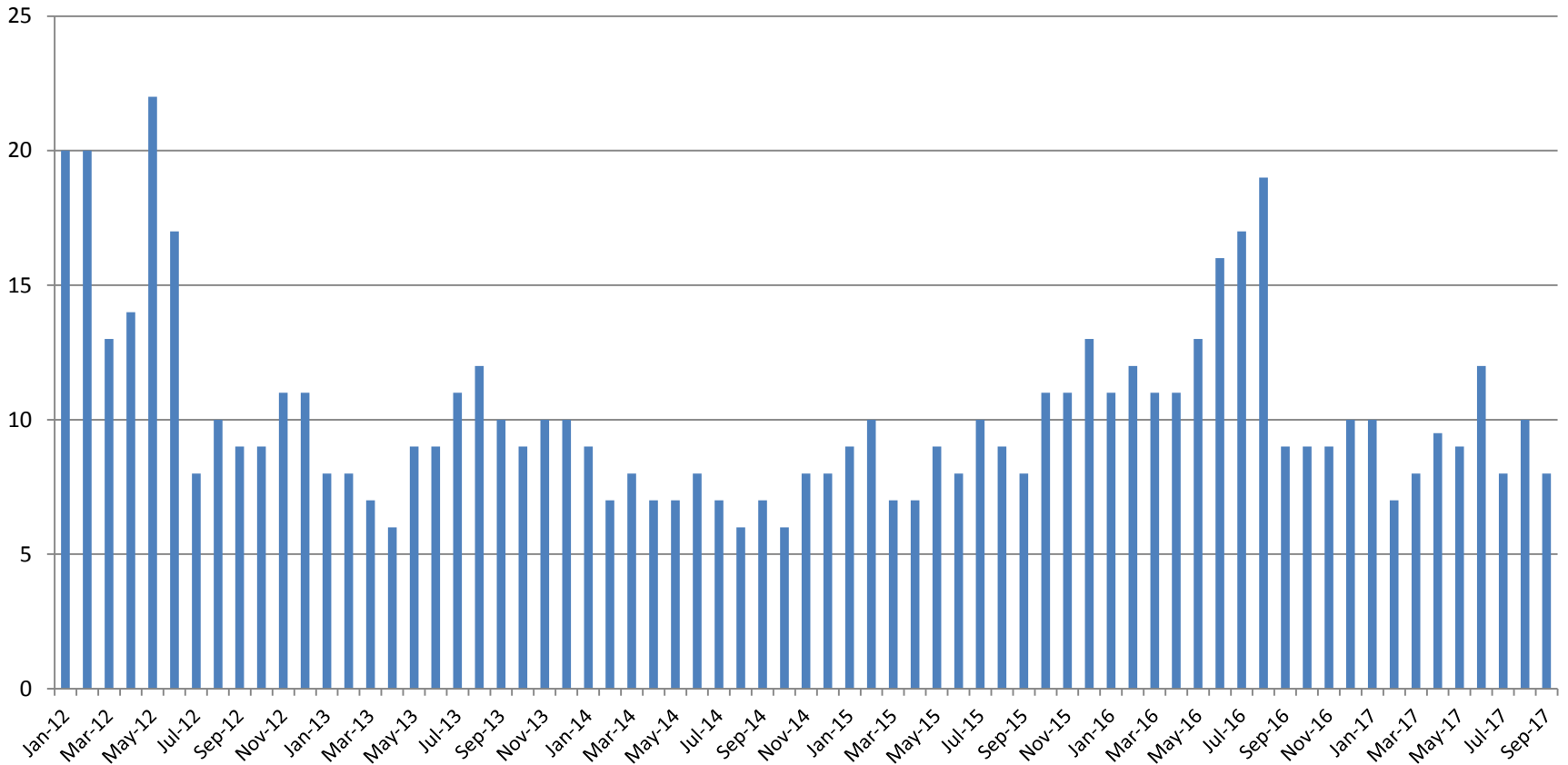


October:

2012 = 143	2015 = 198
2013 = 116	2016 = 107
2014 = 123	2017 = 149

(data obtained from SG CO DIO)

Journal Entry Completion (Average Days) January 2013-Present



This data is always reported a month behind

