

Criminal Justice Coordinating Council

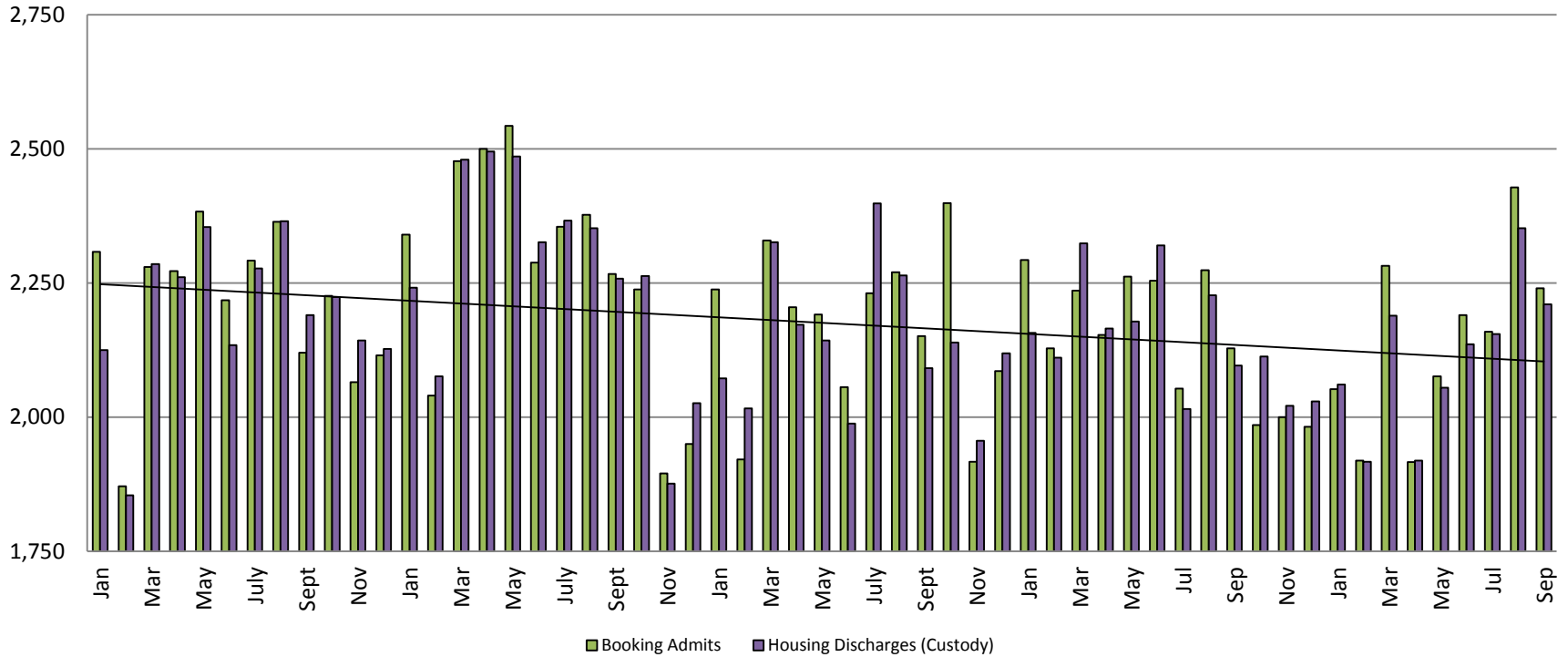
Population Report & Program Trends

October 2017



Detention Facility

Booking Admits & Housing Discharges from Custody January 2013 - Present



Housing Discharges for September

2015 = 2,091
 2016 = 2,096
 2017 = 2,210

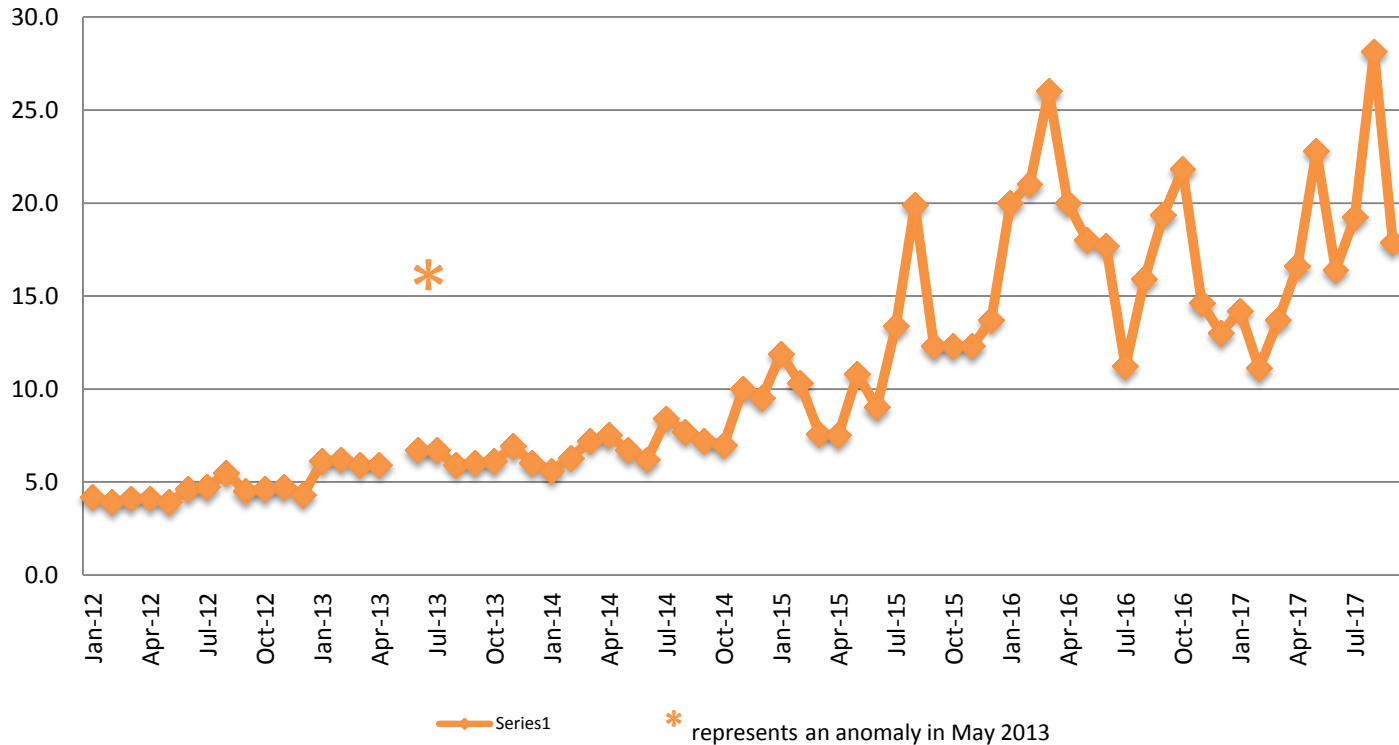
Bookings for September

2015 = 2,151
 2016 = 2,128
 2017 = 2,240

(data obtained from detention facility)



Average Length of Stay: Booking (Hours) January 2012 - Present



September

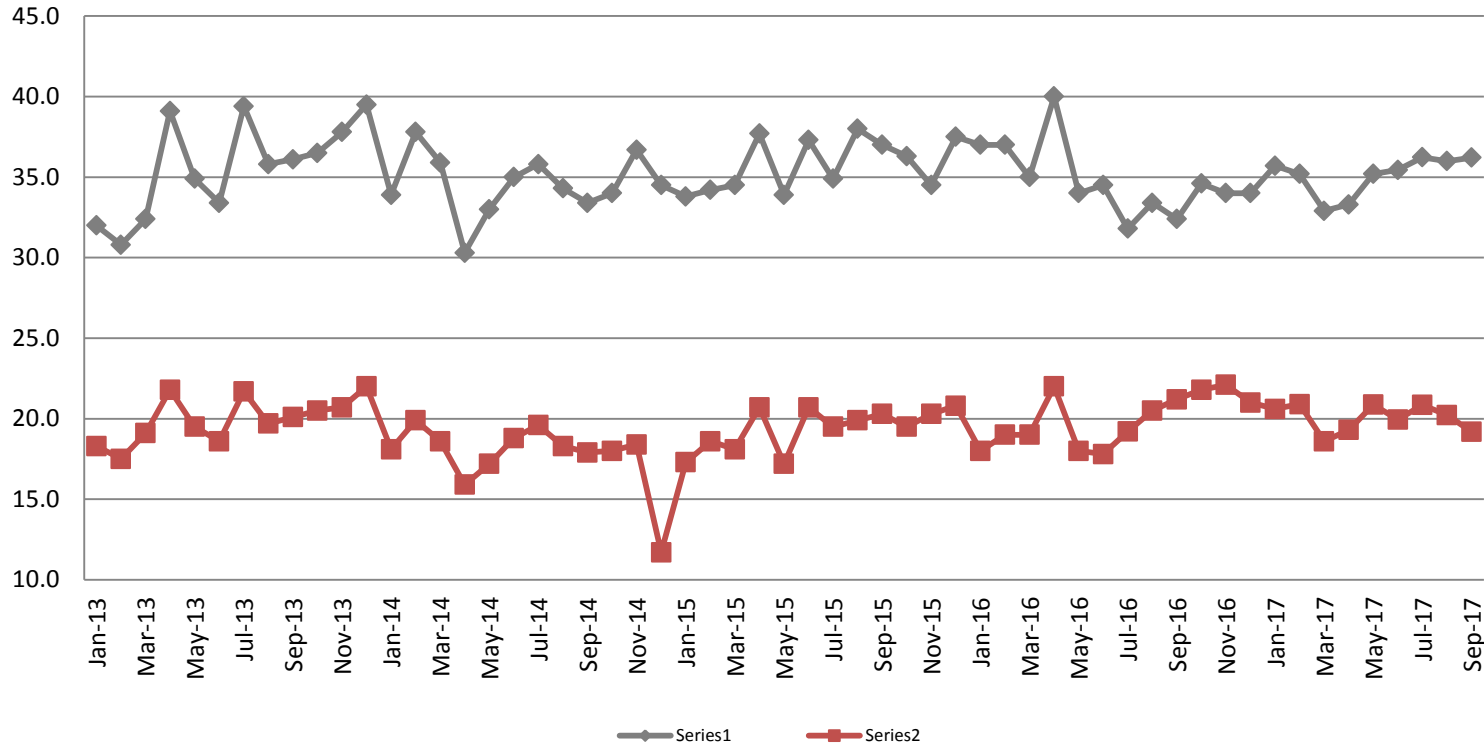
2012 = 4.5	2015 = 12.3
2013 = 6.0	2016 = 19.4
2014 = 7.2	2017 = 17.9

September YTD Avg.

2012 = 4.4	2015 = 11.4
2013 = 7.3	2016 = 18.8
2014 = 7.0	2017 = 17.8



Average Length of Stay: Housing & Combined (Days) January 2013 - Present



September Housing

2013 = 36.1
 2014 = 33.4
 2015 = 37.0
 2016 = 32.4
 2017 = 36.2

September Housing YTD Avg.

2013 = 34.9
 2014 = 34.4
 2015 = 35.7
 2016 = 35.0
 2017 = 35.1

September Combined

2013 = 20.1
 2014 = 17.9
 2015 = 20.3
 2016 = 21.2
 2017 = 19.2

September Combined YTD Avg.

2013 = 19.6
 2014 = 18.3
 2015 = 19.1
 2016 = 19.4
 2017 = 20.1

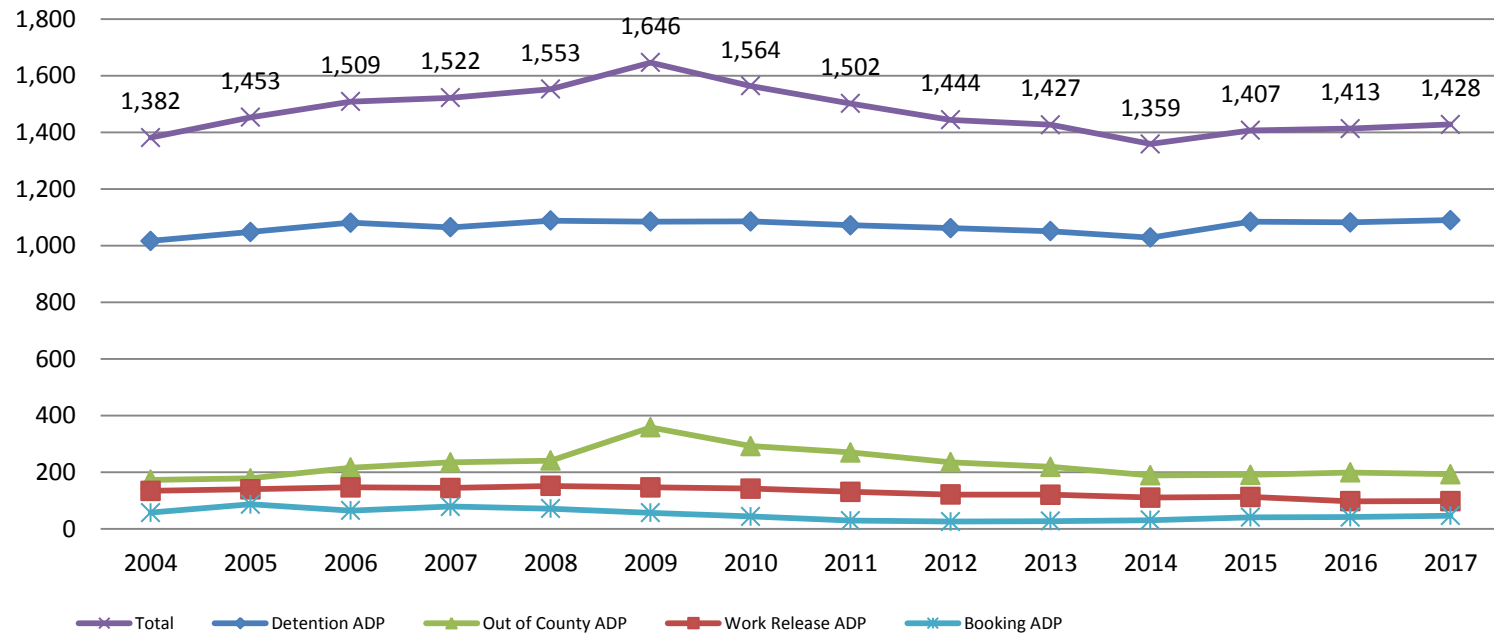


Sedwick County...
 working for you

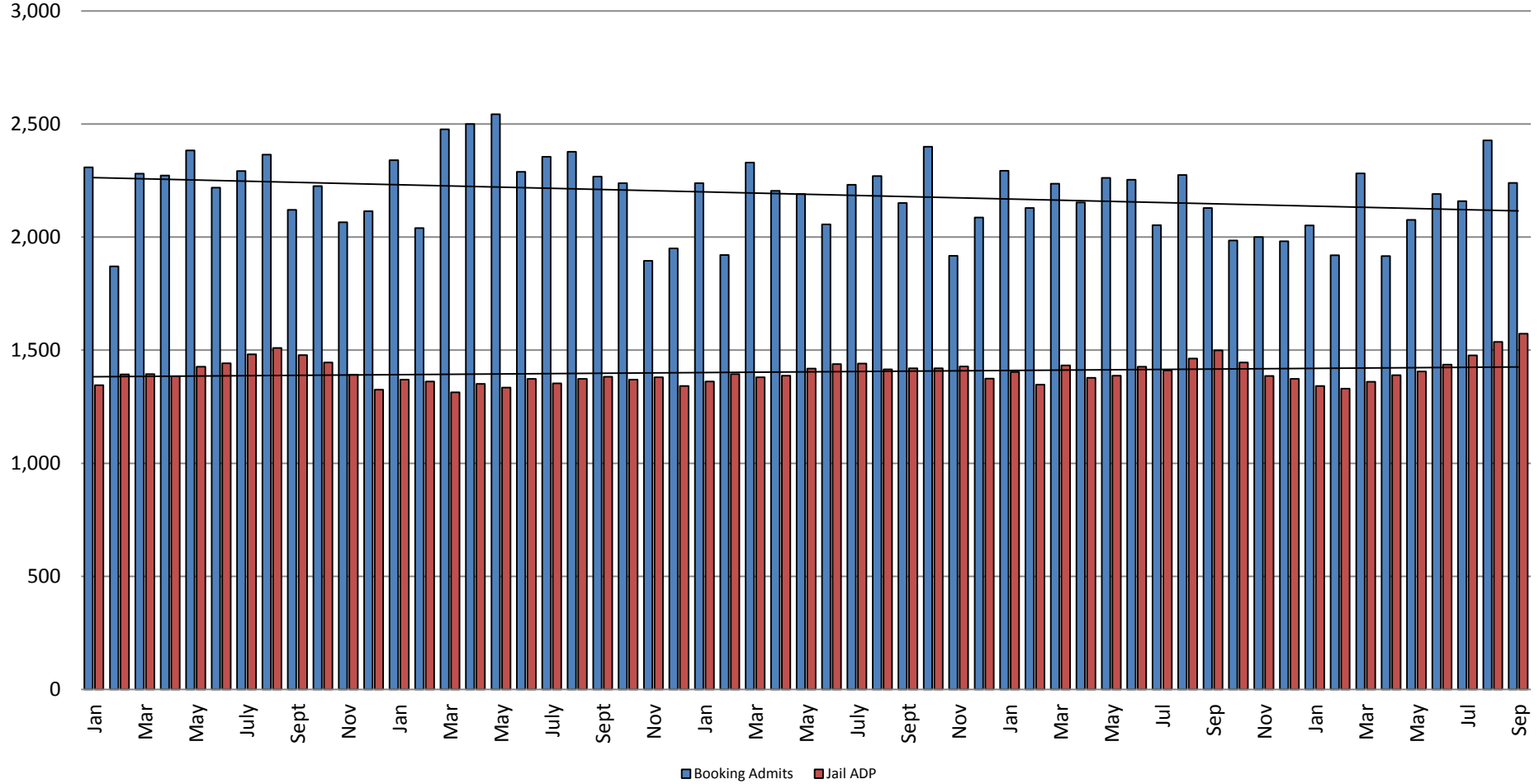
(data obtained from detention facility)

Jail: Annual Average Daily Population (ADP)

TRENDS: Booking, Detention, Work Release, & Out of County
Annual ADP: 2004 - present



Booking Admits & Total Monthly ADP (Jail): 2013 - present

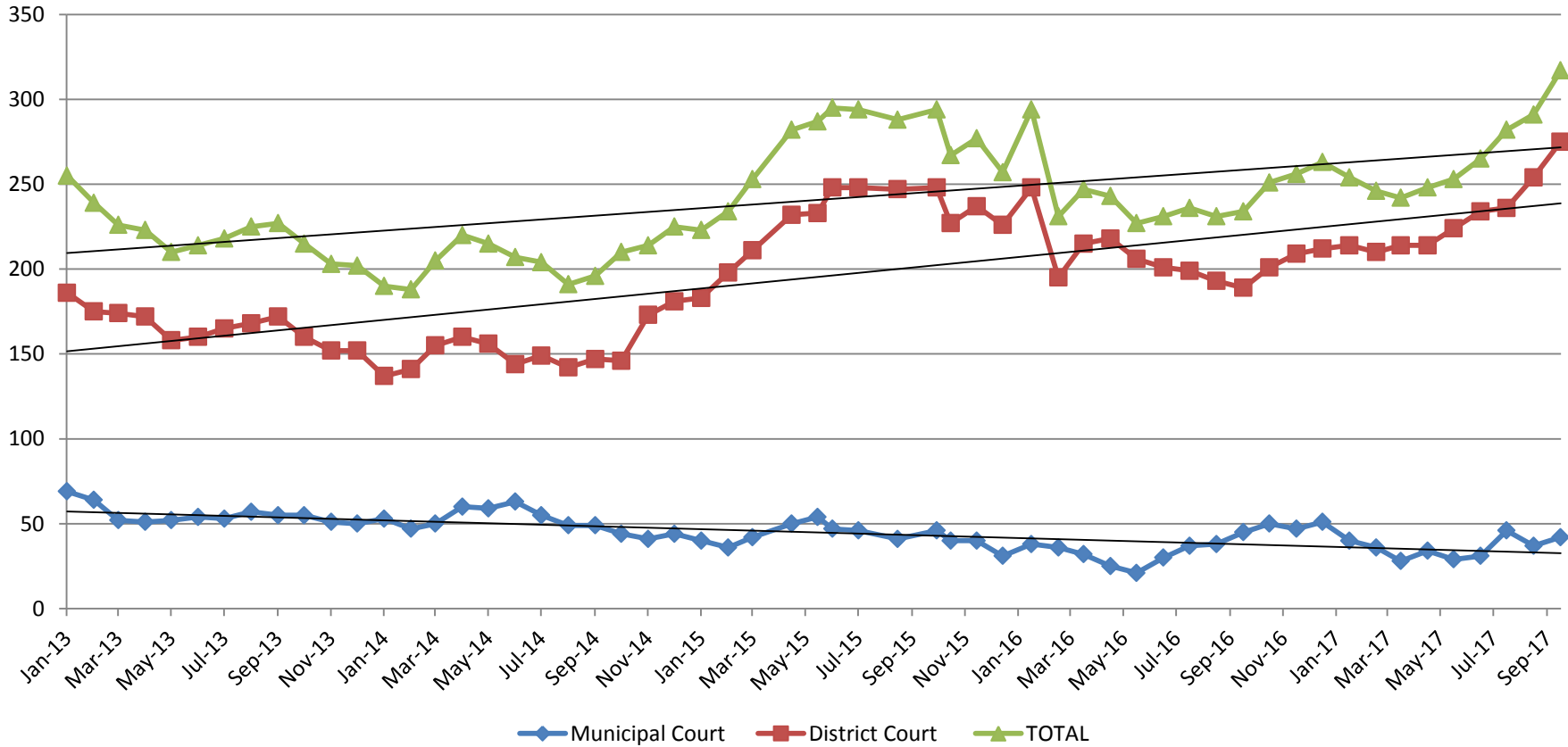


Jail includes individuals in booking, detention, work release and out-of county (combined)

(data obtained from detention facility)



Pretrial Services Program (PSP) Monthly ADP: January 2013 - Present

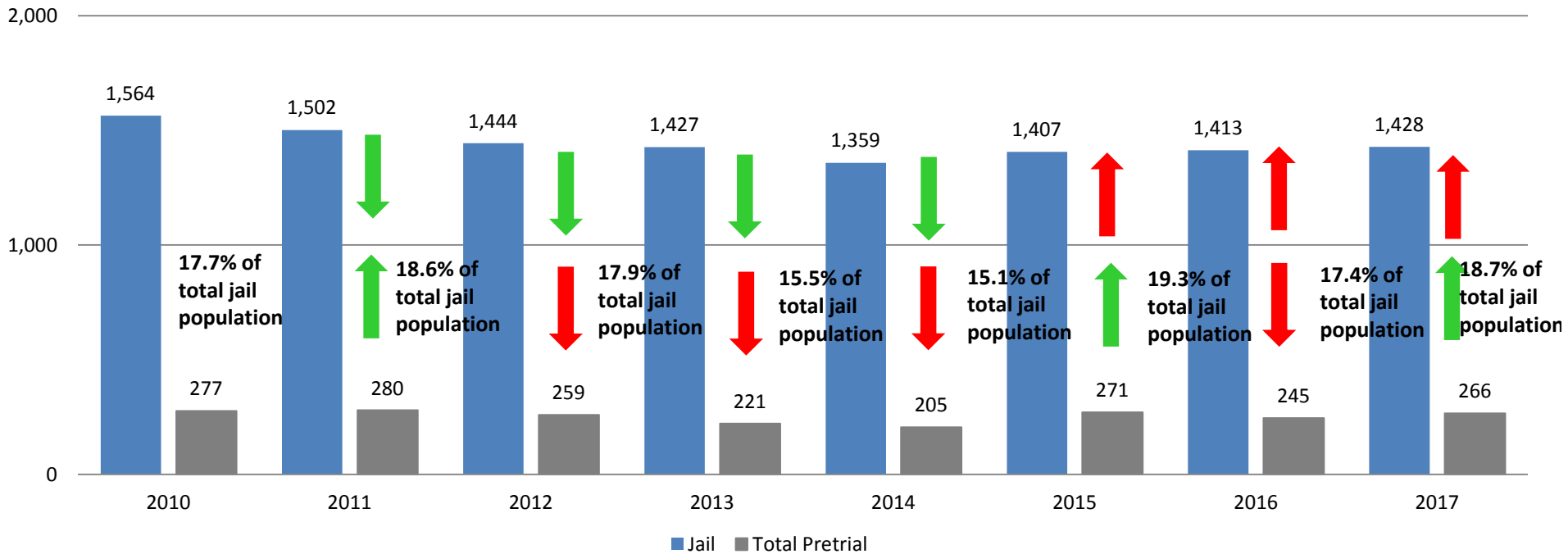


September	2013	2014	2015	2016	2017
Municipal Court	55	49	46	45	42
District Court	172	147	248	189	275
TOTAL	227	196	294	234	317

September YTD Avg.	2013	2014	2015	2016	2017
Municipal Court	56	54	45	34	36
District Court	170	148	228	207	231
TOTAL	223	202	272	242	266

Correlation: Total & PSP

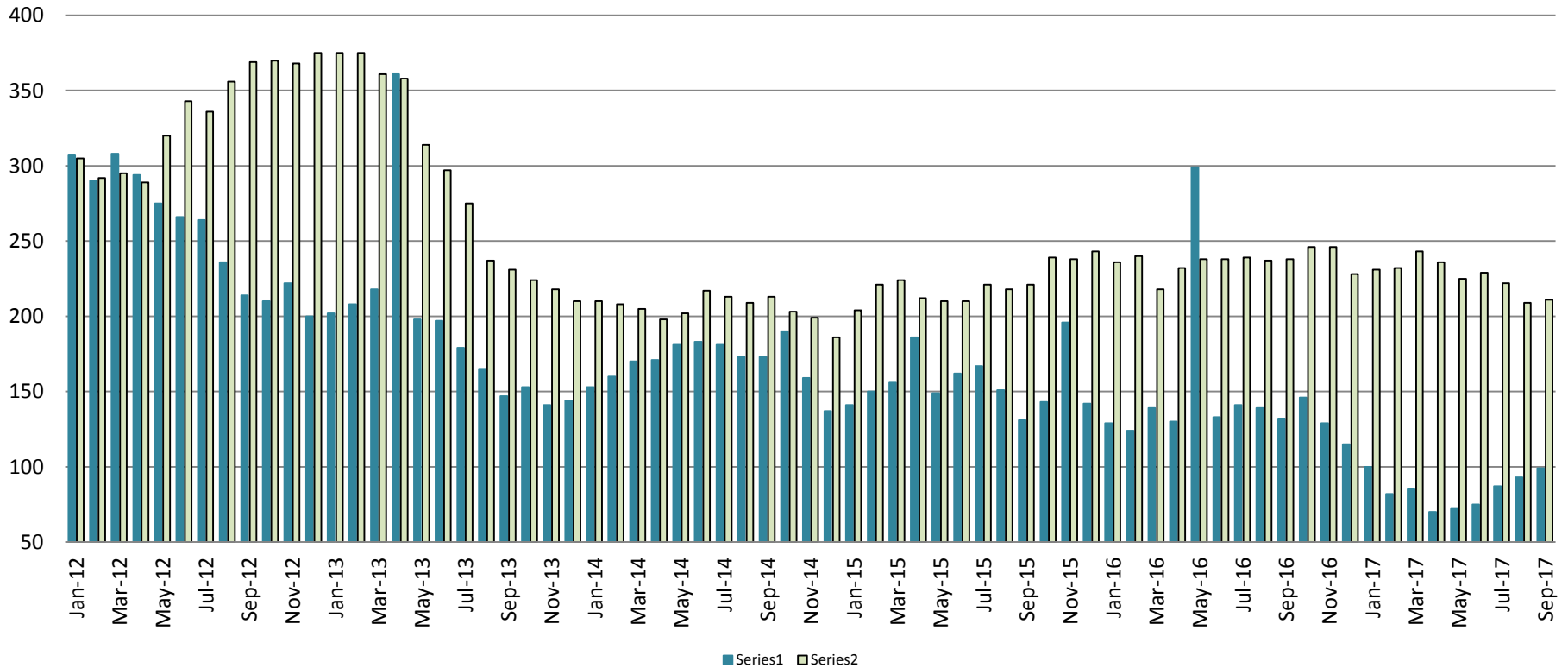
Total Annual ADP: 2010 - Present



Arrows represent the overall increase/decrease of the population from year to year

Jail includes individuals in booking, detention, work release and out-of county (combined)

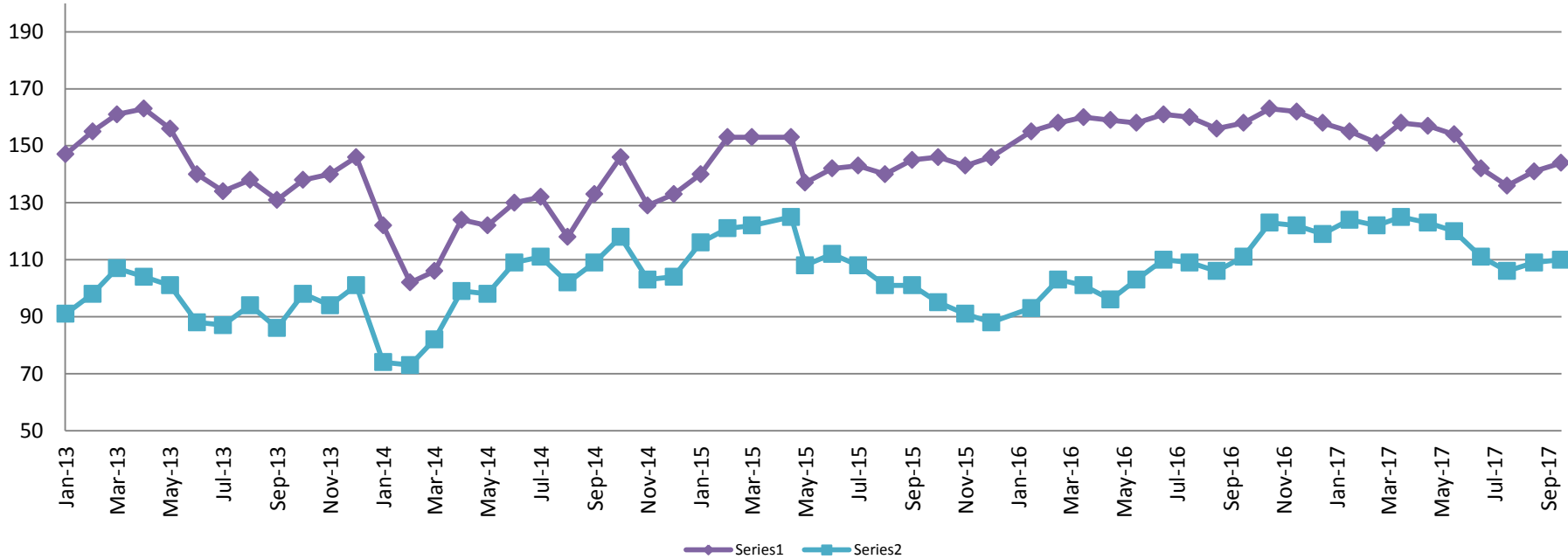
Diversion - Active Caseload January 2012 - Present



September	2013	2014	2015	2016	2017
Municipal Court- DUI	147	173	131	132	99
District Court- Active	275	213	221	238	211

September YTD Avg.	2013	2014	2015	2016	2017
Municipal Court	223	172	155	152	85
District Court	336	208	216	235	226

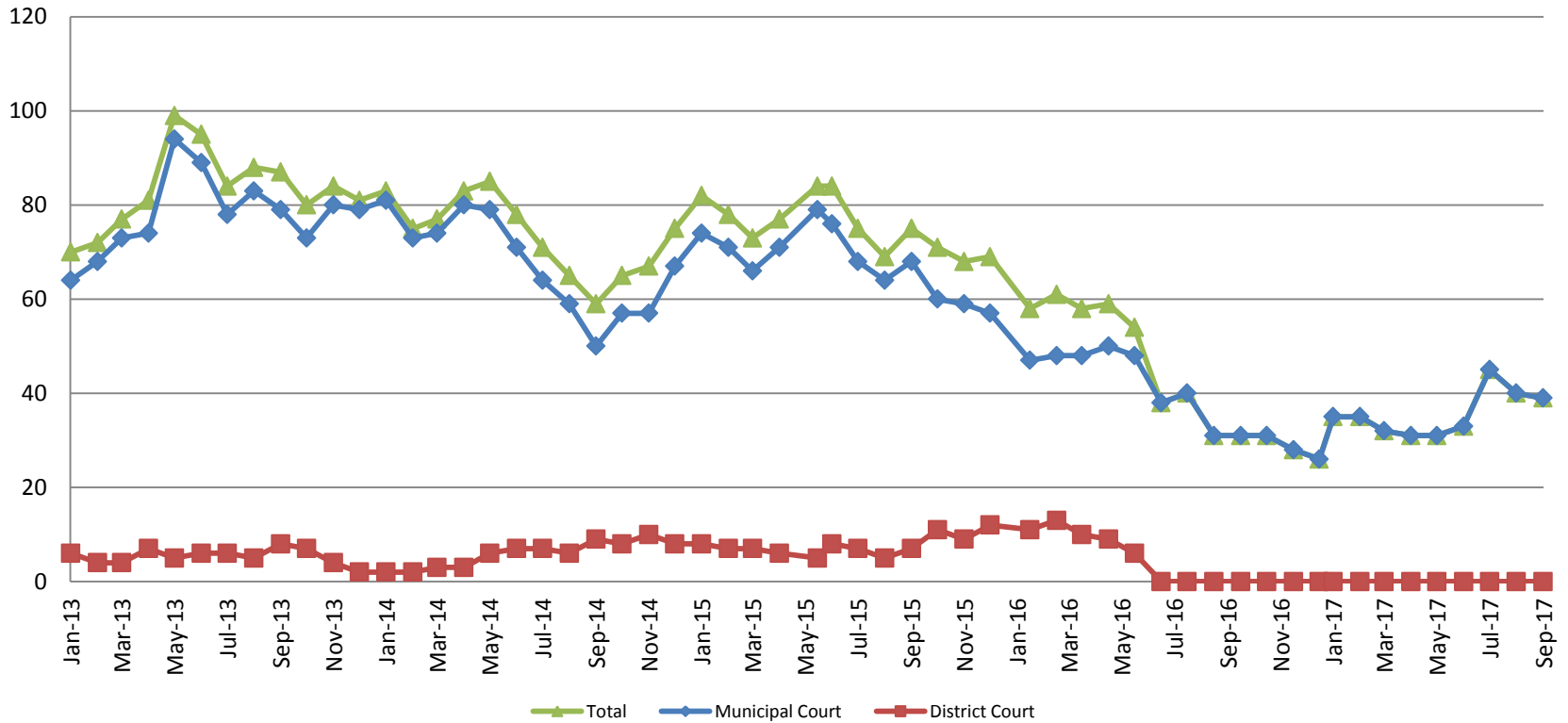
Mental Health - ADP 2013 - present



September:	2013	2014	2015	2016	2017
SCOAP	131	133	145	158	144
CoW – MH Court	87	109	101	111	110
September YTD Avg.	2013	2014	2015	2016	2017
SCOAP	151	121	145	158	149
CoW – MH Court	97	95	113	104	117



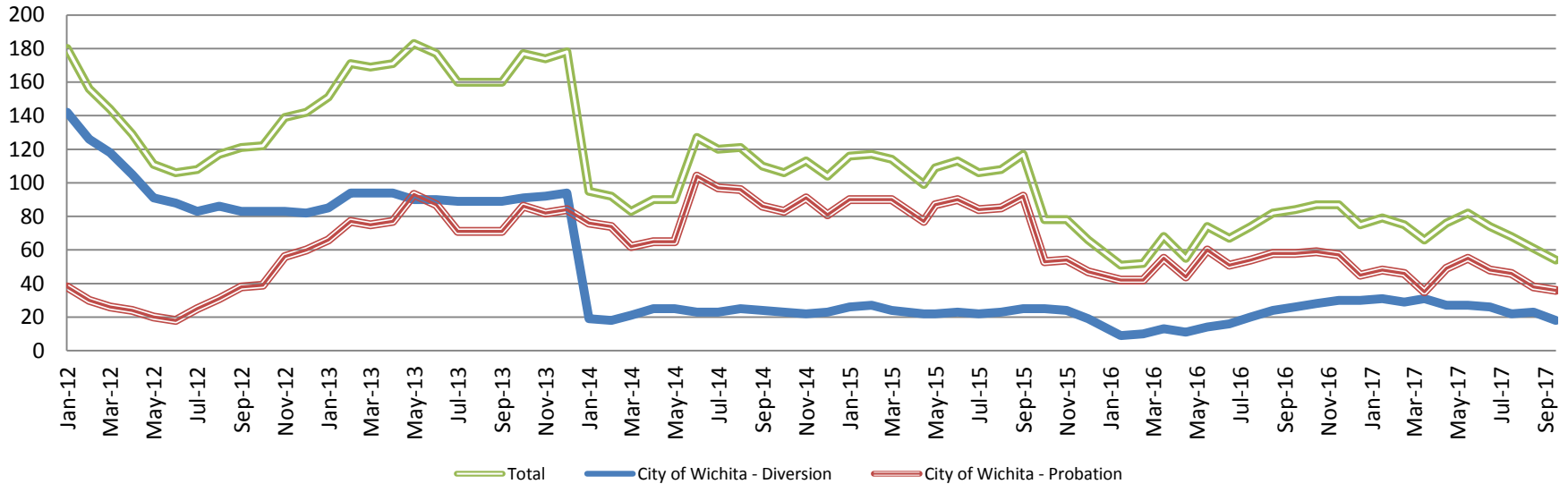
Day Reporting - Active Caseload 2013-present



September	2013	2014	2015	2016	2017
Municipal Court	79	50	68	31	39
District Court	8	9	7	0*	0*
TOTAL	87	59	75	31	39
September YTD Avg.	2013	2014	2015	2016	2017
Municipal Court	78	70	72	41	36
District Court	6	5	7	0*	0*
TOTAL	84	75	77	46	36



Drug Court - City of Wichita ADP: 2012 - present



September CoW Diversion

2013 = 89
2014 = 24
2015 = 25
2016 = 26
2017 = 18

September YTD Avg.

2013 = 90
2014 = 23
2015 = 24
2016 = 16
2017 = 26

September CoW Probation

2013 = 71
2014 = 86
2015 = 92
2016 = 58
2017 = 36

September YTD Avg.

2013 = 76
2014 = 81
2015 = 87
2016 = 52
2017 = 45

September CoW Total

2013 = 160
2014 = 110
2015 = 117
2016 = 84
2017 = 54

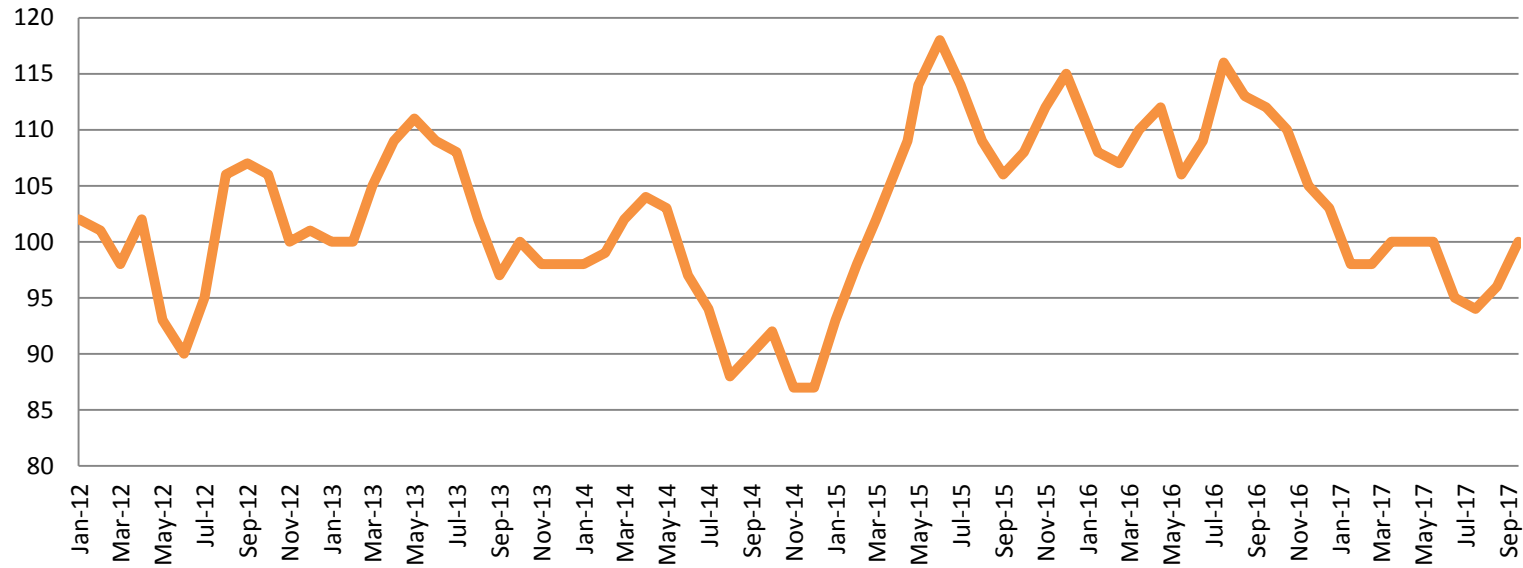
September YTD Avg.

2013 = 167
2014 = 103
2015 = 111
2016 = 67
2017 = 71

(data obtained from CoW)



Drug Court - Sedgwick County ADP: 2012 - present



September SG CO

2013 = 97

2014 = 90

2015 = 106

2016 = 112

2017 = 100

September YTD Avg.

2013 = 105

2014 = 97

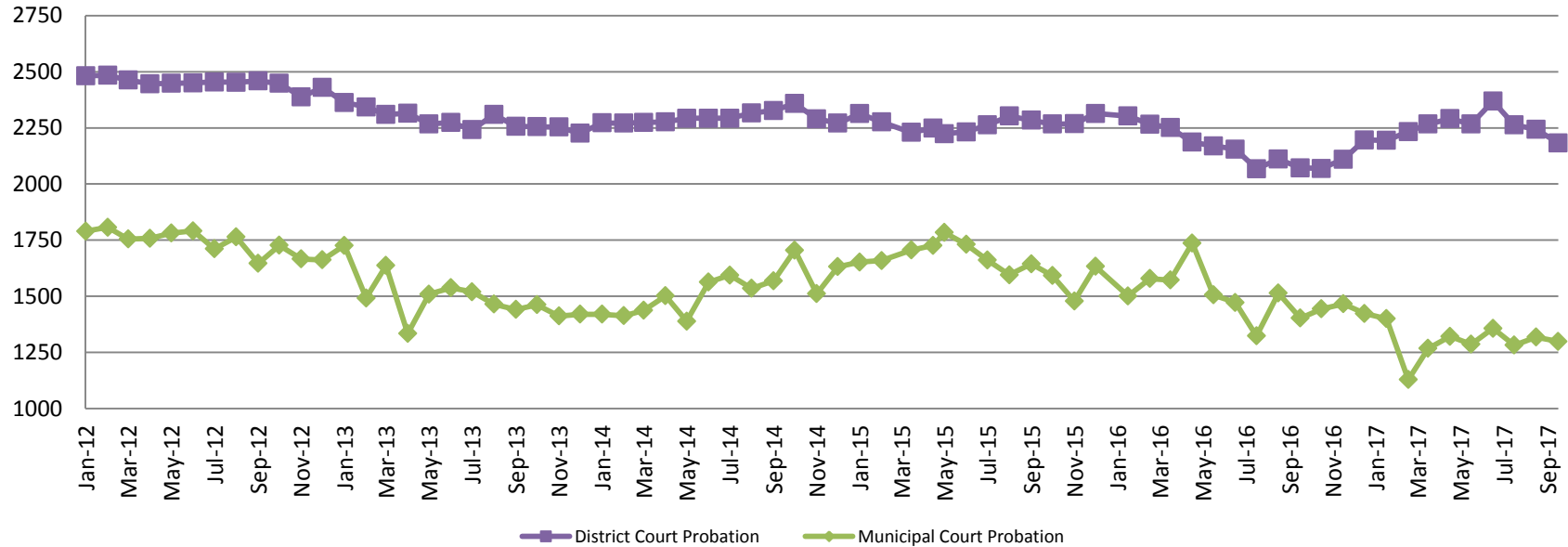
2015 = 107

2016 = 110

2017 = 98

(data obtained from Pretrial Services)

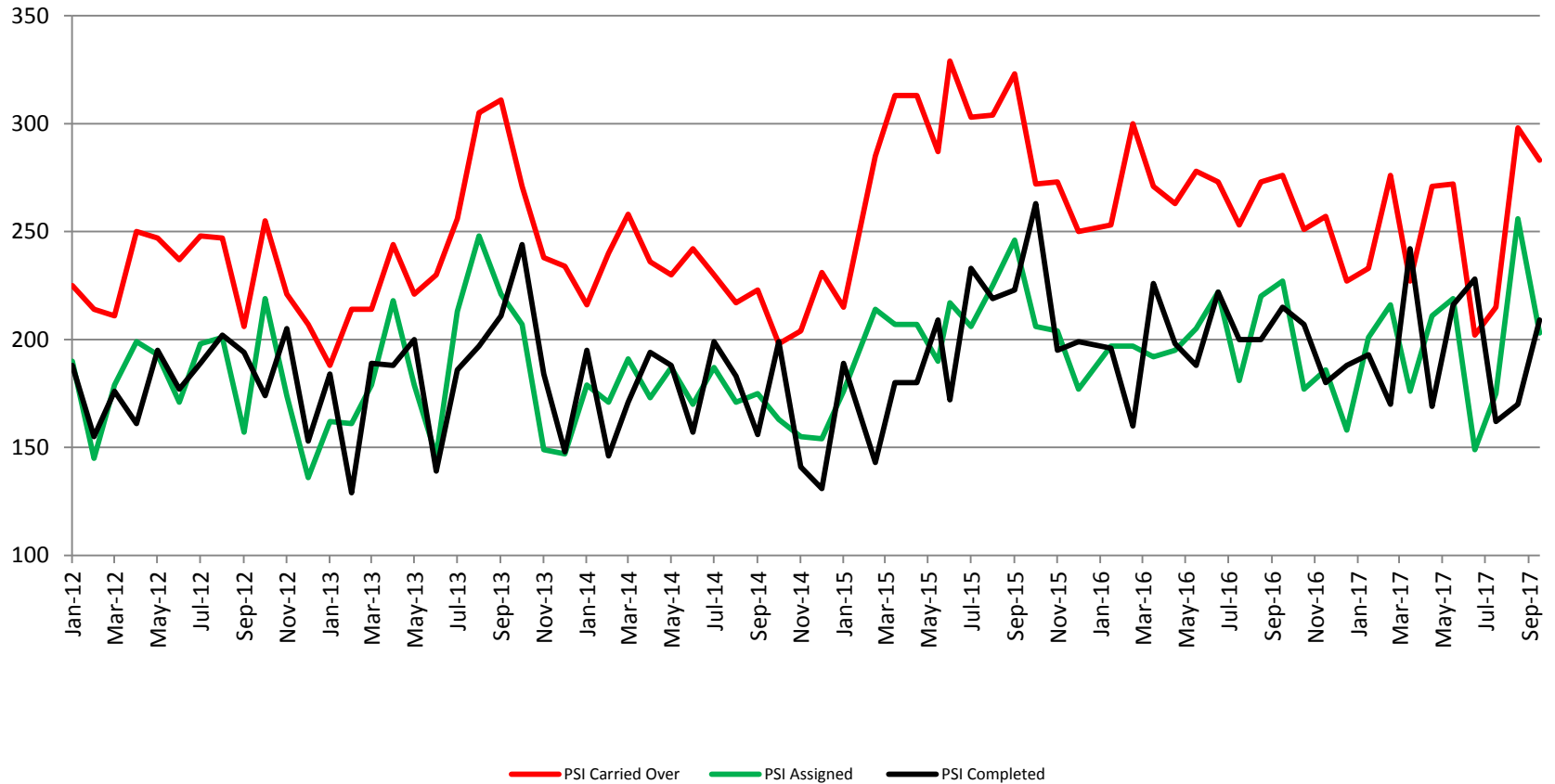
Probation - Active Caseloads 2012 - present



September	2013	2014	2015	2016	2017
District Court	2,257	2,327	2,284	2,072	2,183
Municipal Court	1,441	1,569	1,644	1,403	1,299
September YTD Avg.	2013	2014	2015	2016	2017
District Court	2,298	2,291	2,264	2,176	2,257
Municipal Court	1,518	1,491	1,684	1,512	1,296

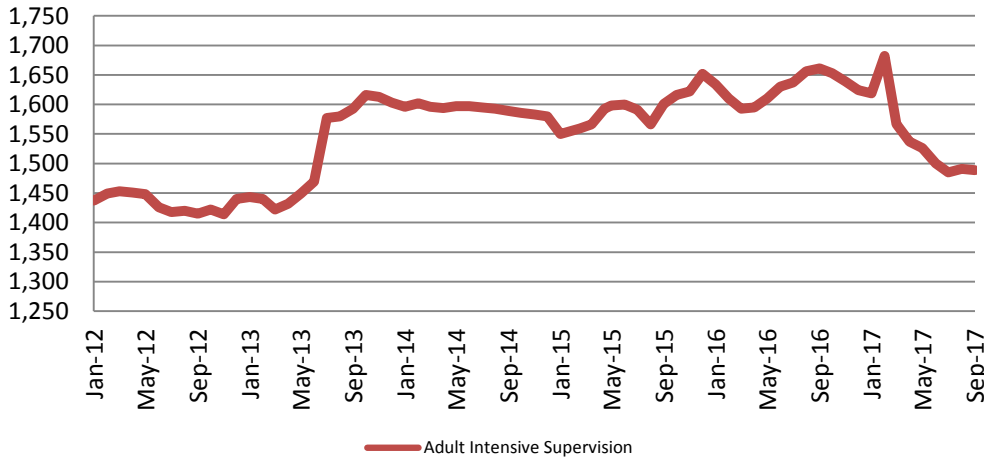


District Court Probation: Pre-Sentence Investigation 2012 - present



Community Corrections

Adult Intensive Supervision Probation (AISP) ADP 2012 - present



<u>September</u>	<u>September YTD Avg.</u>
2013 = 1,593	2013 = 1,489
2014 = 1,589	2014 = 1,595
2015 = 1,601	2015 = 1,580
2016 = 1,661	2016 = 1,625
2017 = 1,489	2017 = 1,544

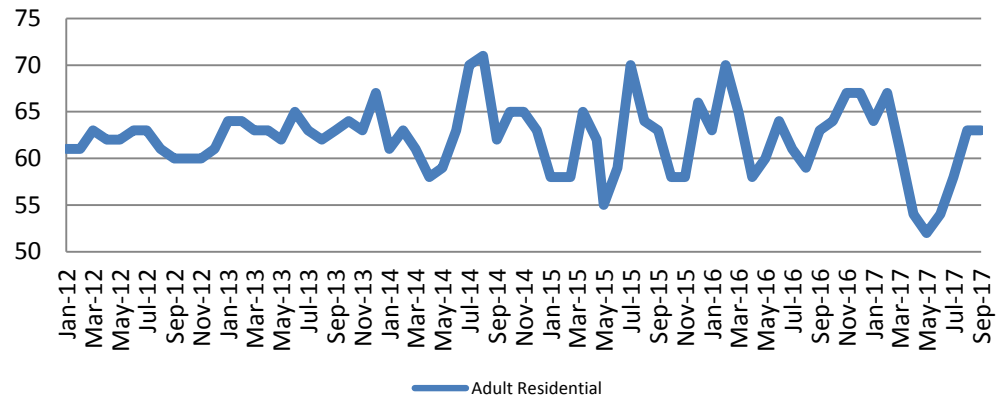
(data obtained from SG CO Dept. of Corrections)

*KDOC changed population count to include drug court, residential and AISP beginning July 2013.

<u>September</u>	<u>September YTD Avg.</u>
2013 = 63	2013 = 63
2014 = 62	2014 = 63
2015 = 63	2015 = 62
2016 = 63	2016 = 63
2017 = 63	2017 = 60

(data obtained from SG CO Dept. of Corrections)

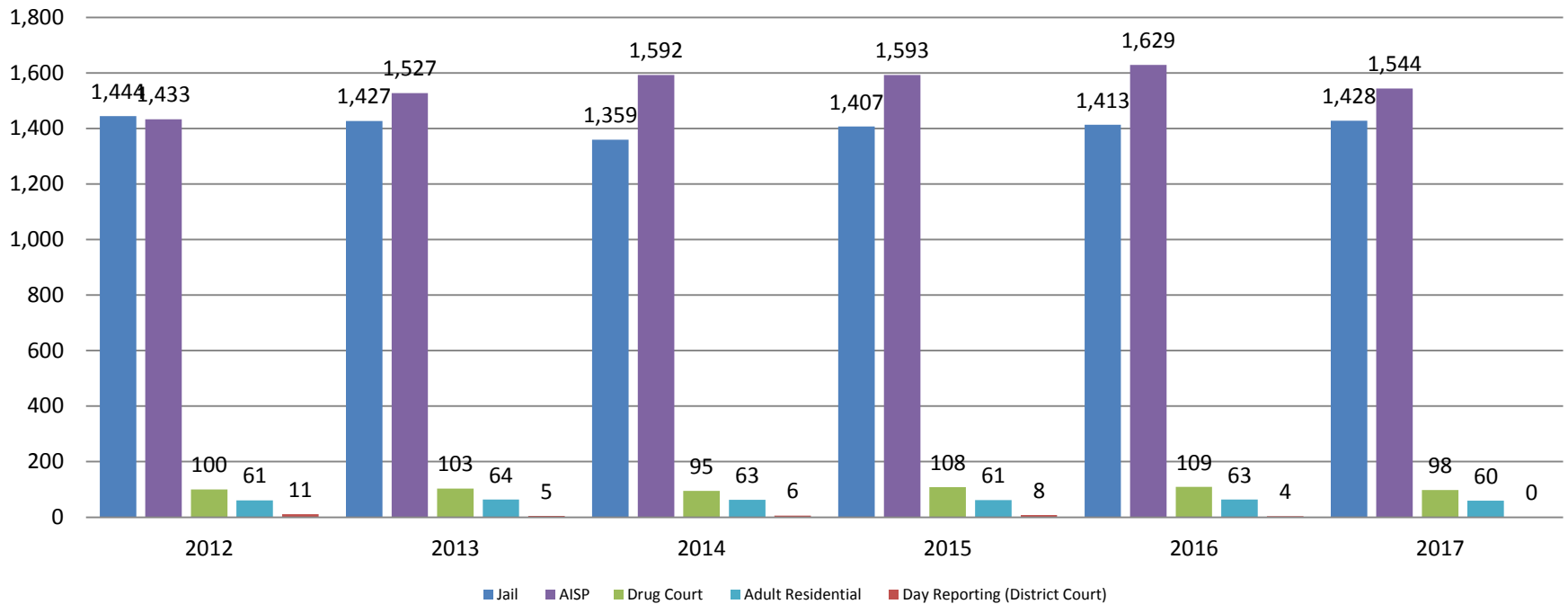
Adult Residential: ADP 2012 - present



— Adult Residential

Correlation: Total & Sedgwick County Programs (Adult)

Total Annual ADP: 2012 - Present

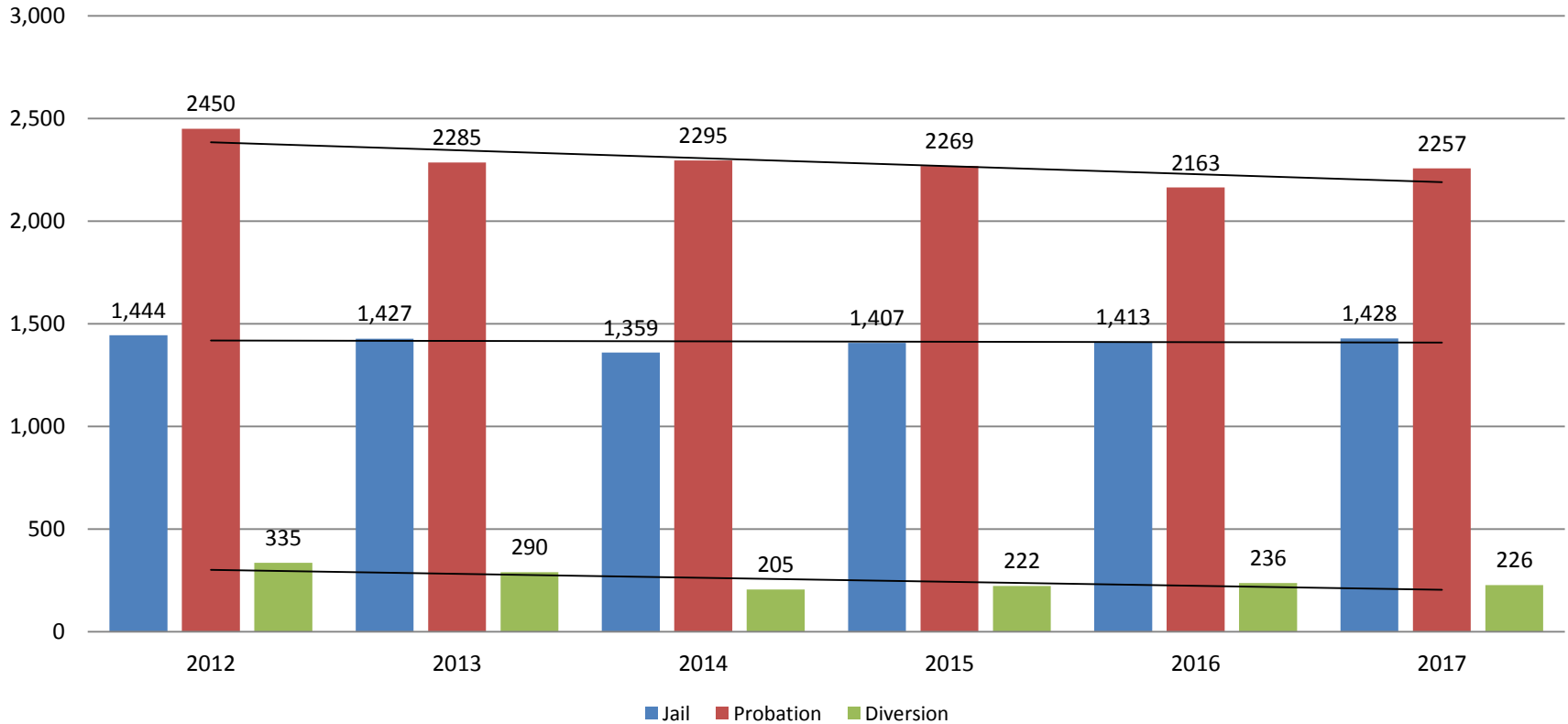


Jail includes individuals in booking, detention, work release and out-of county (combined)

(data obtained from detention facility, SG Dept. of Corrections, Pretrial Services, & CoW)

Correlation: Total & District Court Programs

Total Annual ADP: 2012 - Present

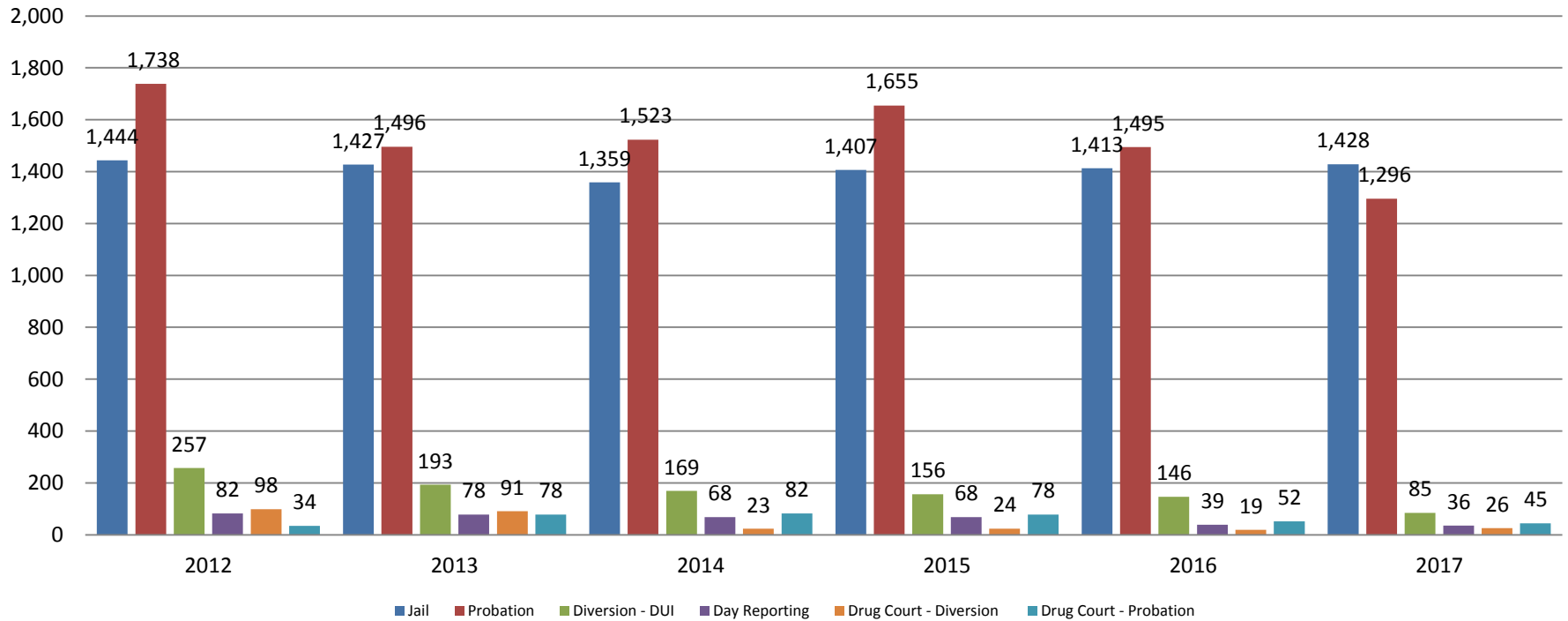


Jail includes individuals in booking, detention, work release and out-of county (combined)



Correlation: Total & City of Wichita / Municipal Court Programs

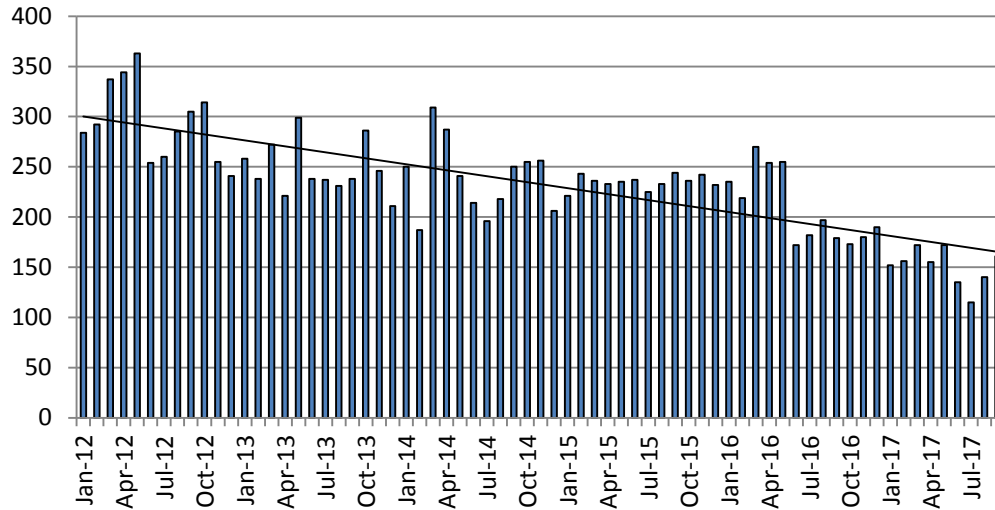
Total Annual ADP: 2012 - present



Jail includes individuals in booking, detention, work release and out-of county (combined)

Juvenile

JIAC Intakes: 2012 - present



September

2013 = 238
 2014 = 250
 2015 = 244
 2016 = 179
 2017 = 161

September YTD Average

2013 = 248
 2014 = 239
 2015 = 234
 2016 = 218
 2017 = 151

(data obtained from SG CO Dept. of Corrections)

September

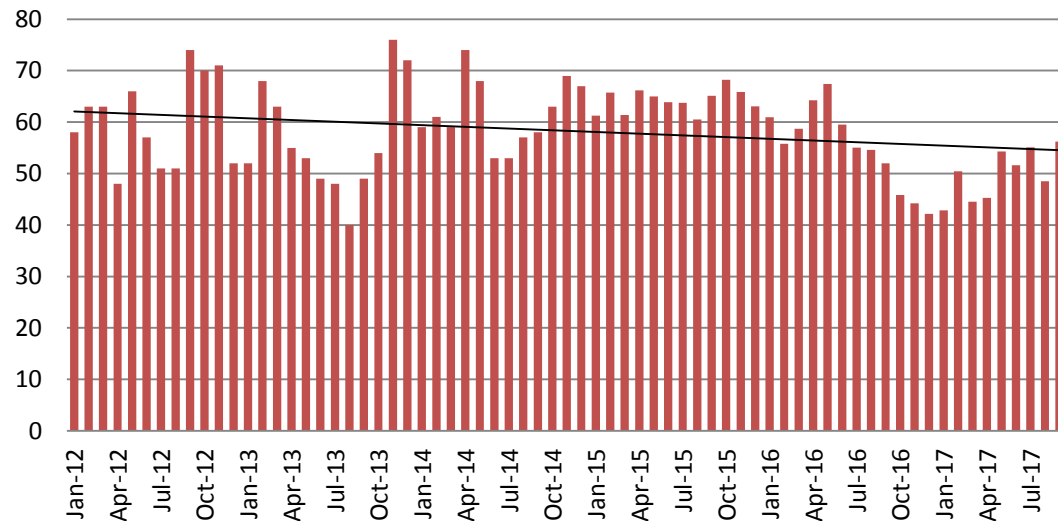
2013 = 49
 2014 = 58
 2015 = 65
 2016 = 52
 2017 = 56

September YTD Avg.

2013 = 53
 2014 = 60
 2015 = 64
 2016 = 59
 2017 = 50

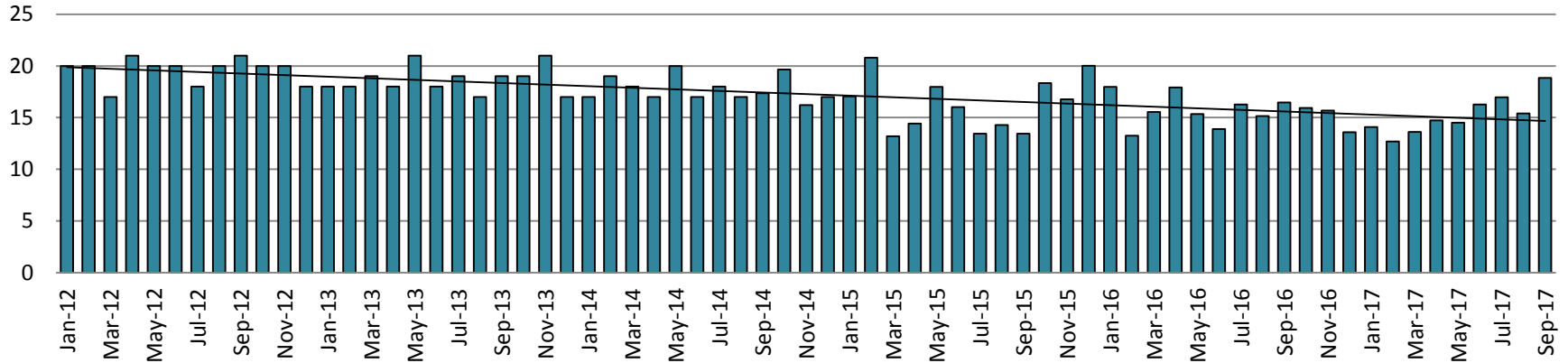
(data obtained from SG CO Dept. of Corrections)

JDF ADP: 2012 - present

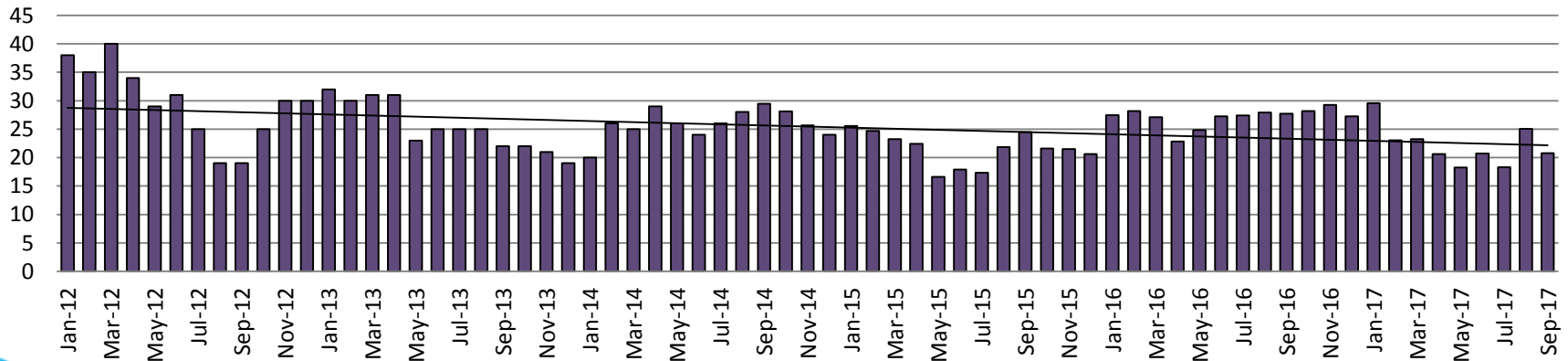


Juvenile Detention Alternatives

Juvenile Residential Facility (JRF) ADP: 2012 - present

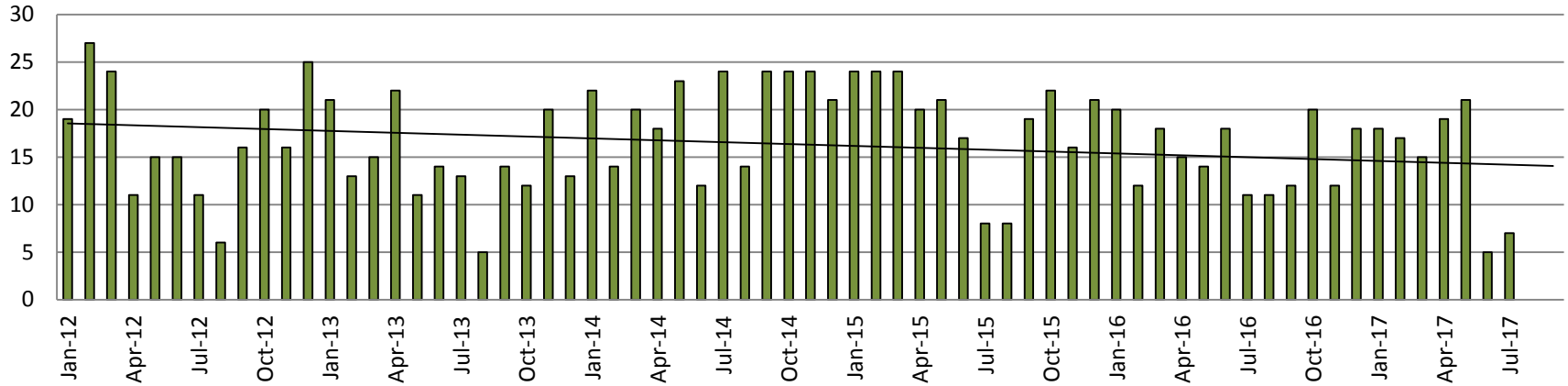


Home-Based Supervision ADP: 2012 - present

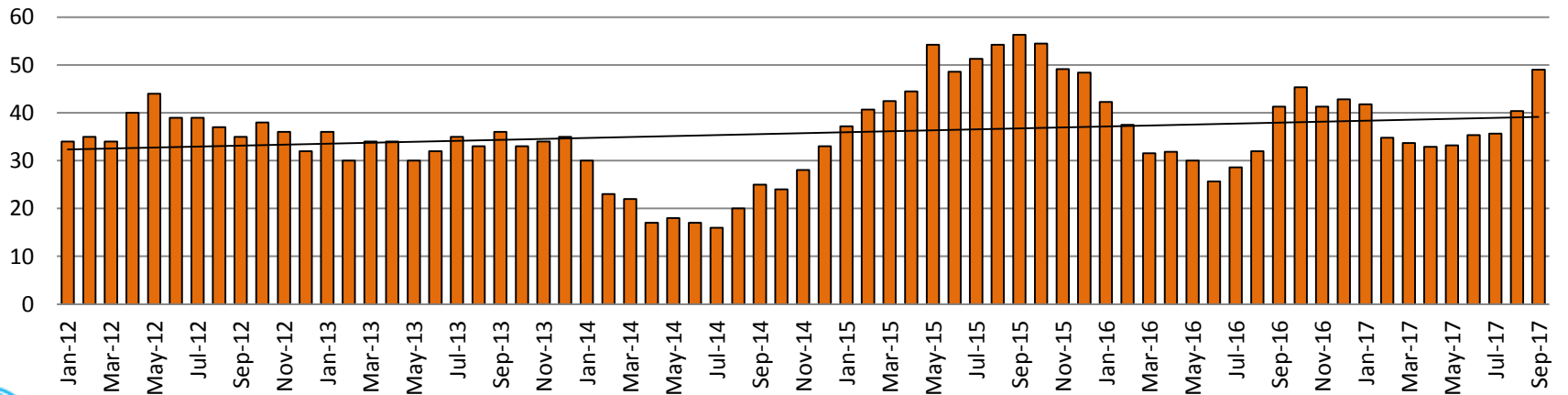


Juvenile Detention Alternatives

Weekend Alternative Detention Program 2012 - present



Detention Advocacy Case Management Services ADP: 2012 - present



Juvenile Detention Services

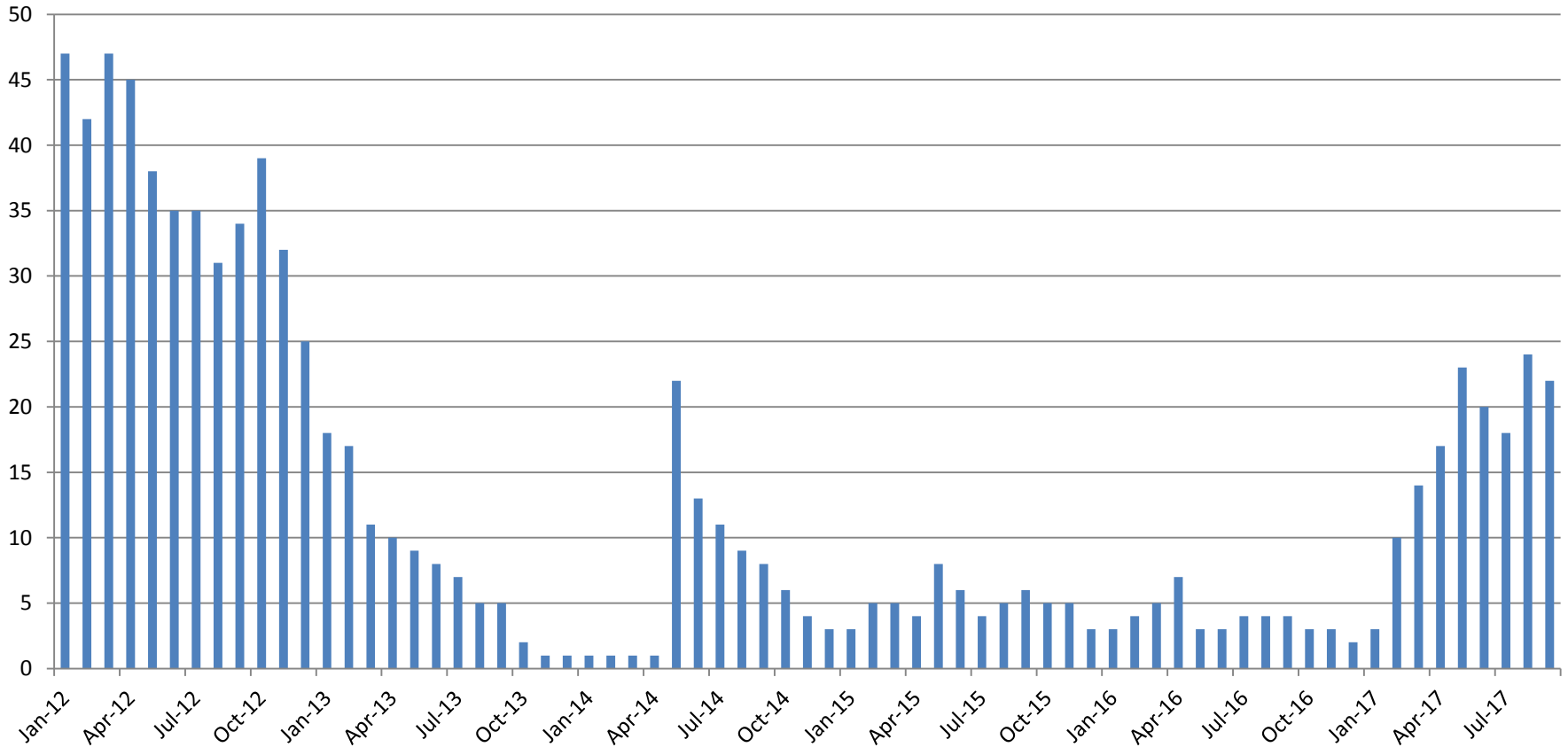
September ADP	2014	2015	2016	2017
Juvenile Detention Facility	58	65	52	56
Juvenile Residential Facility	17	13	16	19
Home Based Supervision	29	25	28	21
Detention Advocacy Case Management Services	25	56	41	49
Weekend Alternative Detention Program (total)	24	19	12	0

September YTD AVERAGE	2014	2015	2016	2017
Juvenile Detention Facility	60	64	59	50
Juvenile Residential Facility	18	16	16	15
Home Based Supervision	26	22	27	22
Detention Advocacy Case Management Services	21	48	33	37
Weekend Alternative Detention Program	19	18	15	11



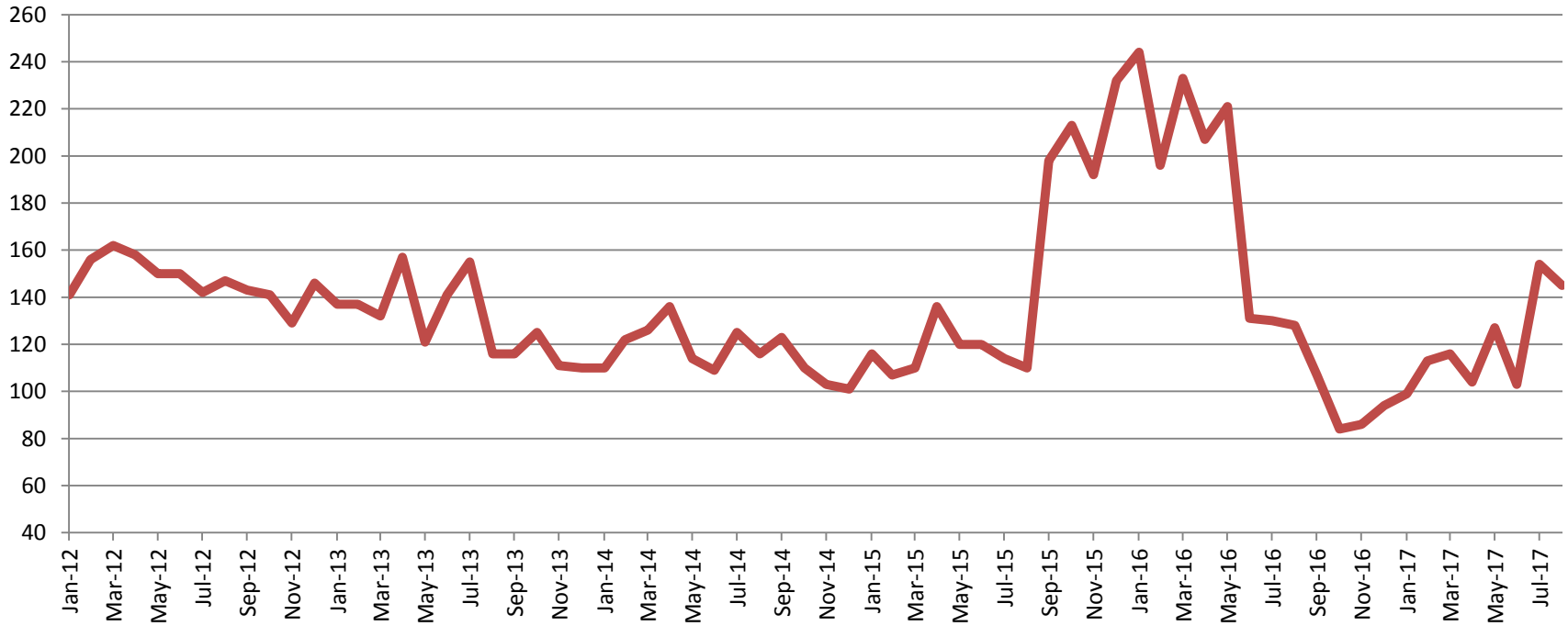
Monthly Jail Snapshot: September 30, 2017

BICE Holds 2012-Present



Monthly Jail Snapshot: September 30, 2017

Felony Commitments: February 2012 - present

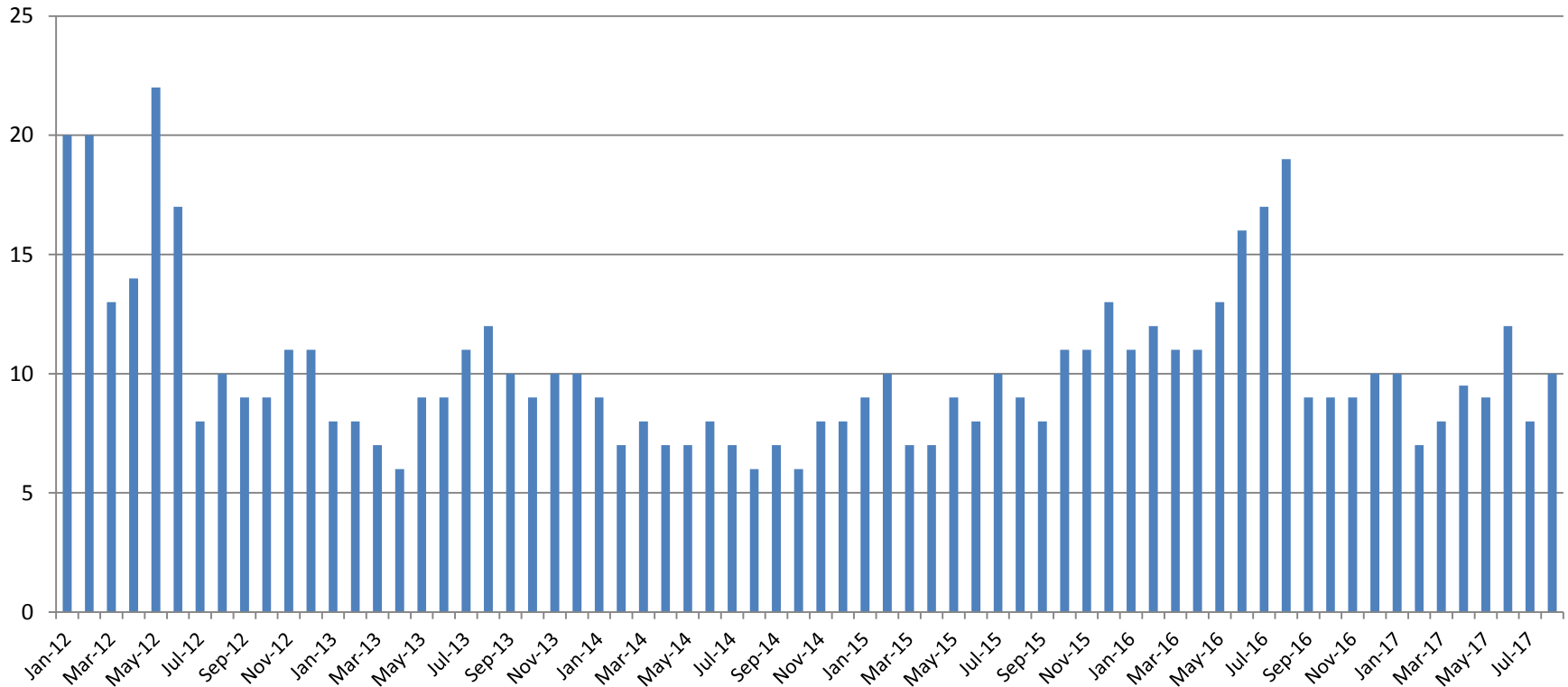


September:

2012 = 147	2015 = 110
2013 = 116	2016 = 128
2014 = 116	2017 = 145

(data obtained from SG CO DIO)

Journal Entry Completion (Average Days) January 2013-Present



This data is always reported a month behind

