

Criminal Justice Coordinating Council

Population Report & Program Trends

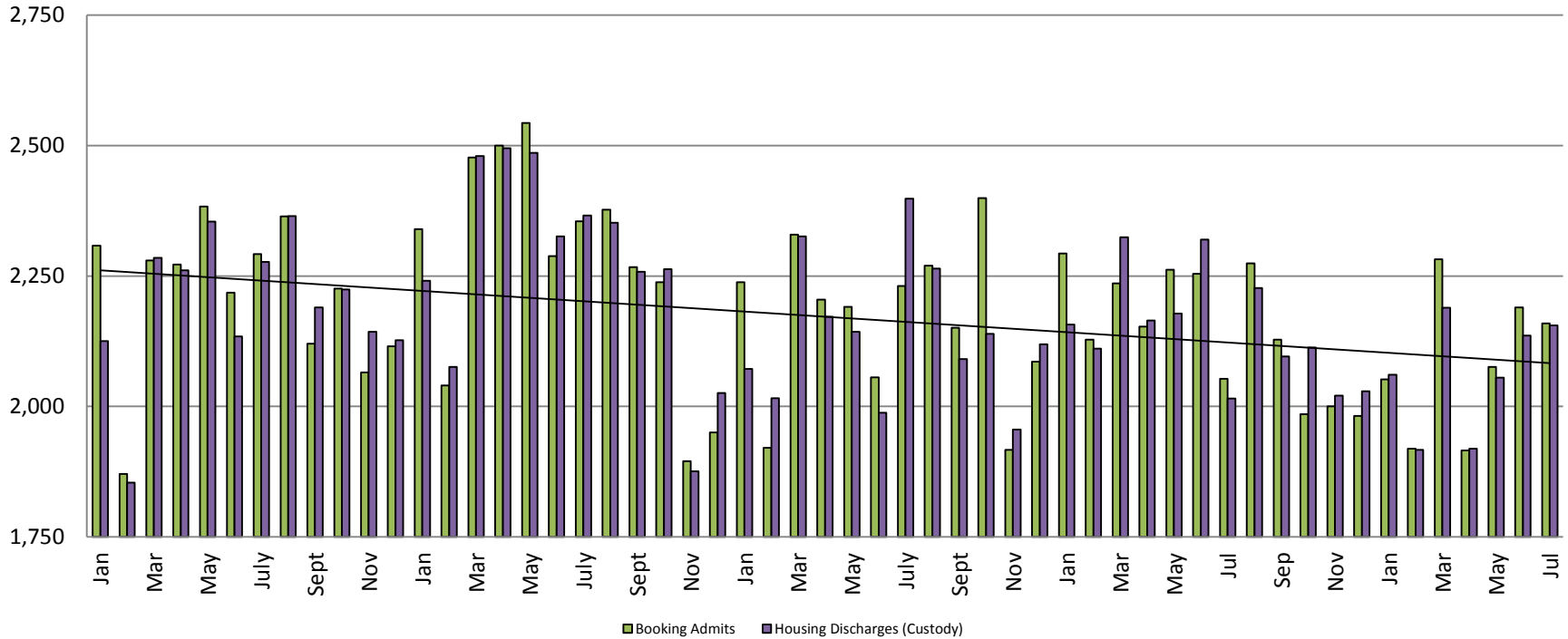
August 2017



Sedgwick County...
working for you

Detention Facility

Booking Admits & Housing Discharges from Custody January 2013 - Present



Housing Discharges for July

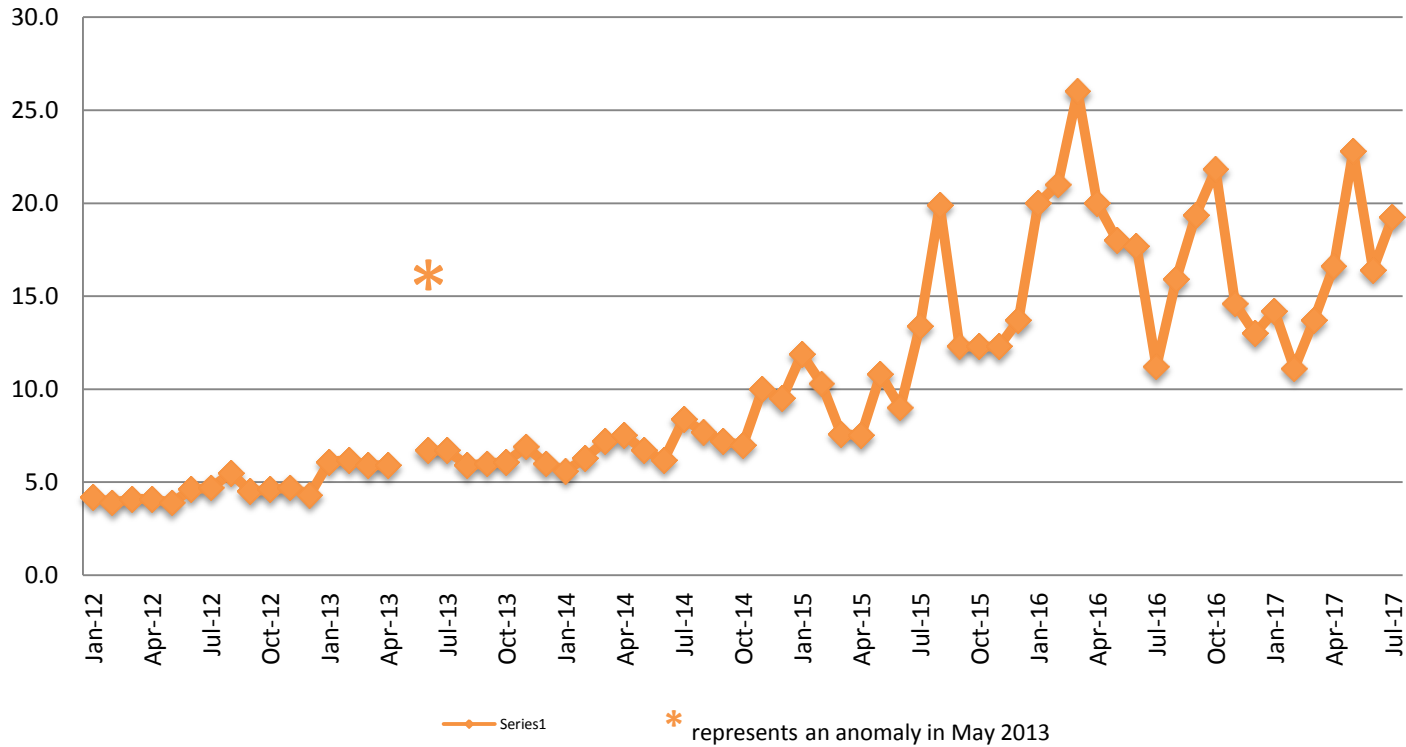
2015 = 2,398
 2016 = 2,015
 2017 = 2,155

Bookings for July

2015 = 2,231
 2016 = 2,053
 2017 = 2,159



Average Length of Stay: Booking (Hours) January 2012 - Present



July

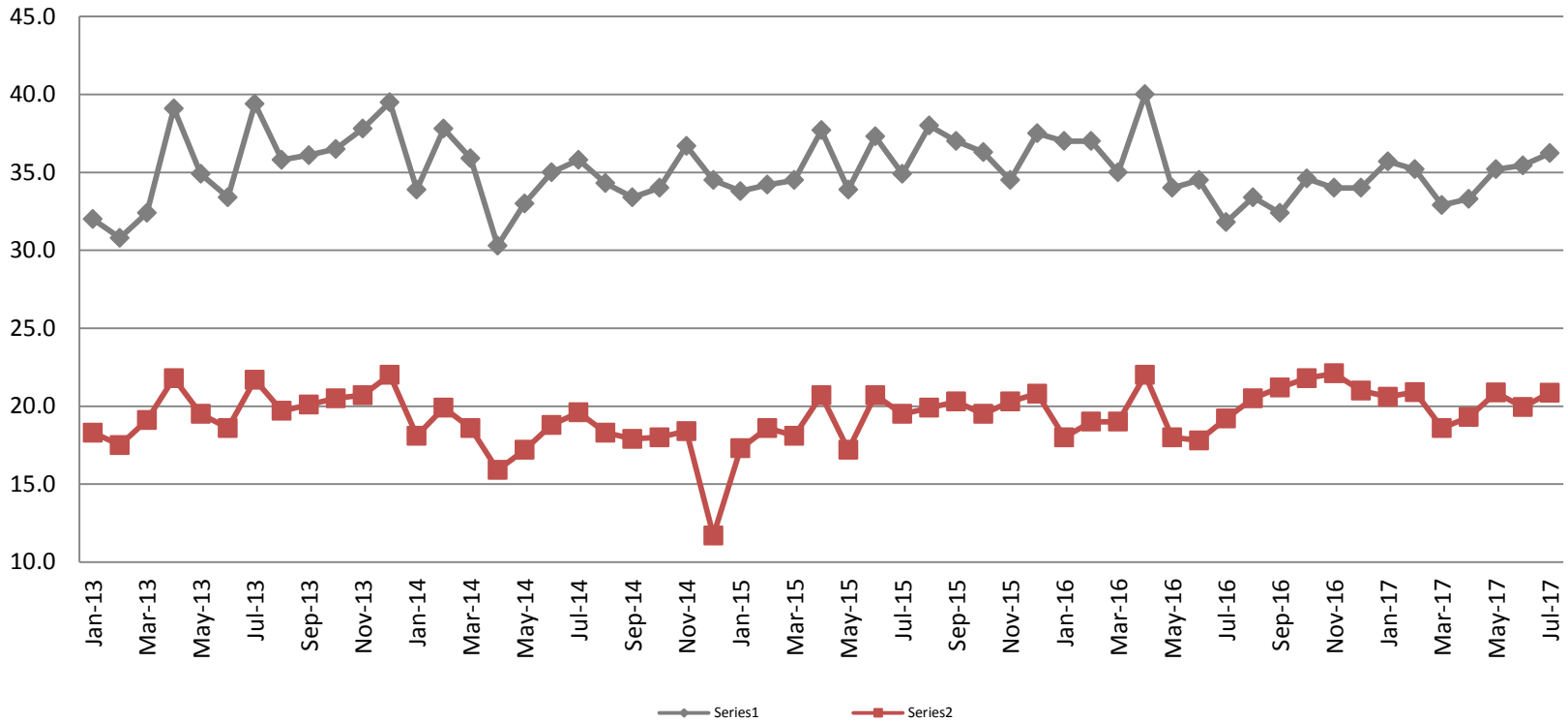
2012 = 4.7	2015 = 13.4
2013 = 6.7	2016 = 11.2
2014 = 8.4	2017 = 19.2

July YTD Avg.

2012 = 4.2	2015 = 10.1
2013 = 7.7	2016 = 19.5
2014 = 6.8	2017 = 16.3



Average Length of Stay: Housing & Combined (Days) January 2013 - Present



July Housing

2013 = 39.4
 2014 = 35.8
 2015 = 34.9
 2016 = 31.8
 2017 = 36.2

July Housing YTD Avg.

2013 = 34.6
 2014 = 34.5
 2015 = 35.2
 2016 = 35.6
 2017 = 34.9

July Combined

2013 = 21.7
 2014 = 19.6
 2015 = 19.5
 2016 = 19.2
 2017 = 20.9

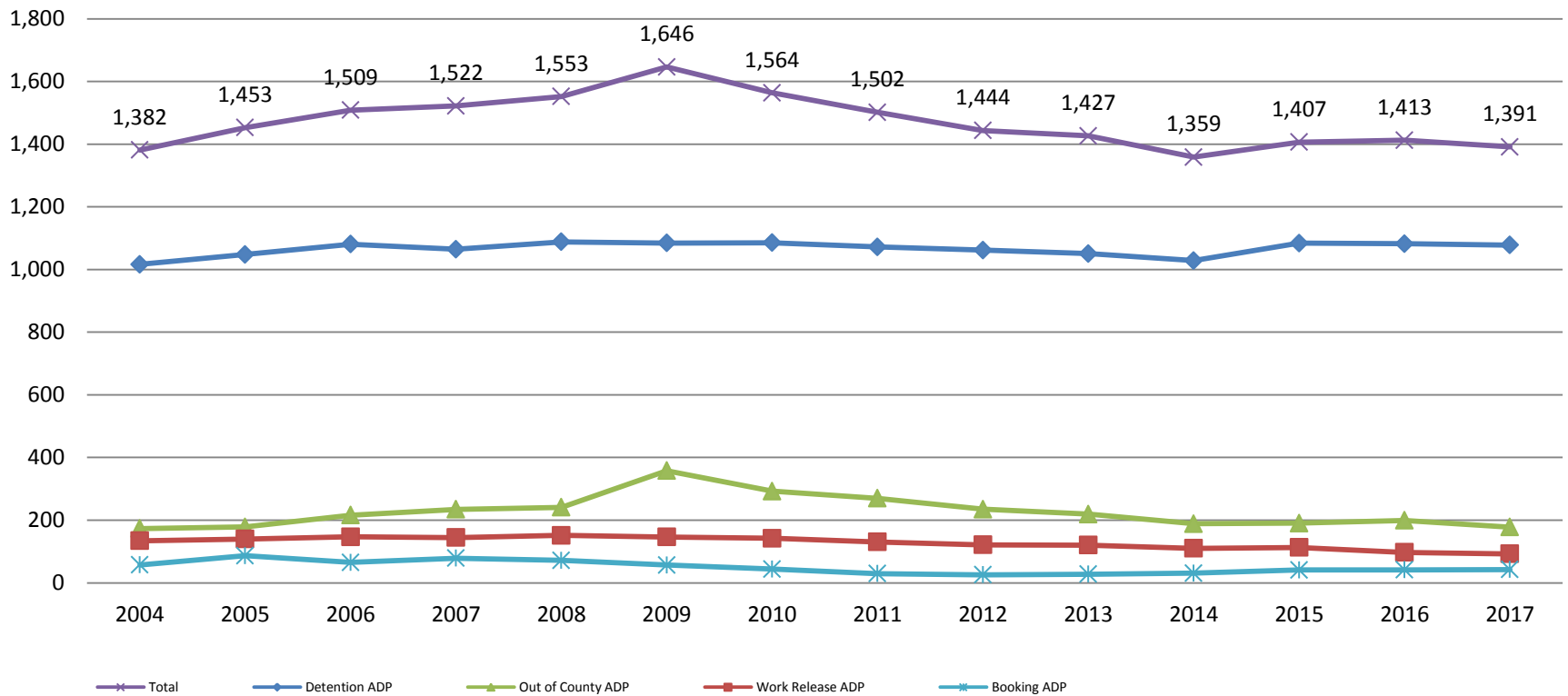
July Combined YTD Avg.

2013 = 19.5
 2014 = 18.3
 2015 = 18.9
 2016 = 19.0
 2017 = 20.2

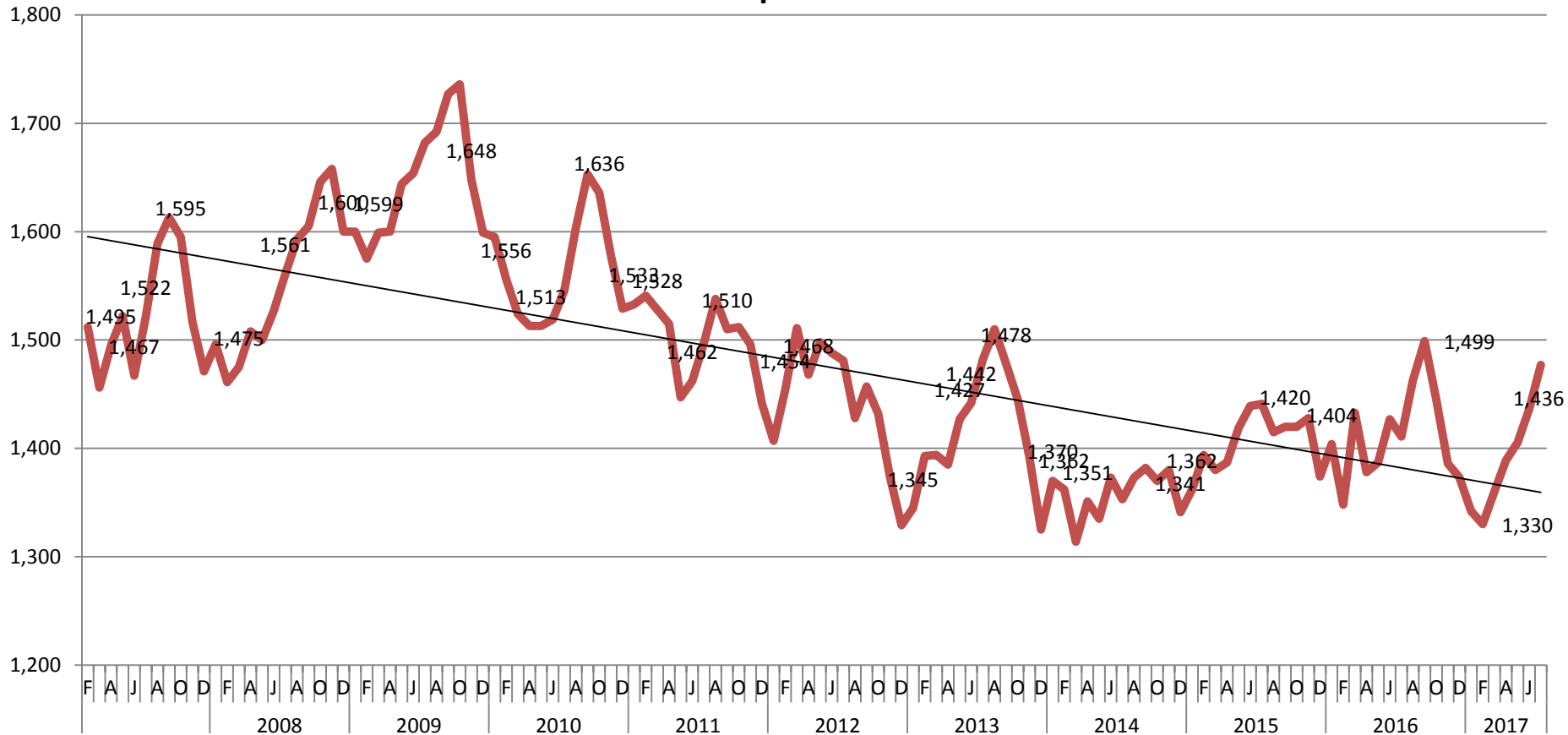


Jail: Annual Average Daily Population (ADP)

**TRENDS: Booking, Detention, Work Release, & Out of County Annual ADP:
2004 - present**



TOTAL MONTHLY ADP: JAIL (Booking, Detention Facility, Work Release, & Out of County) 2007 - present



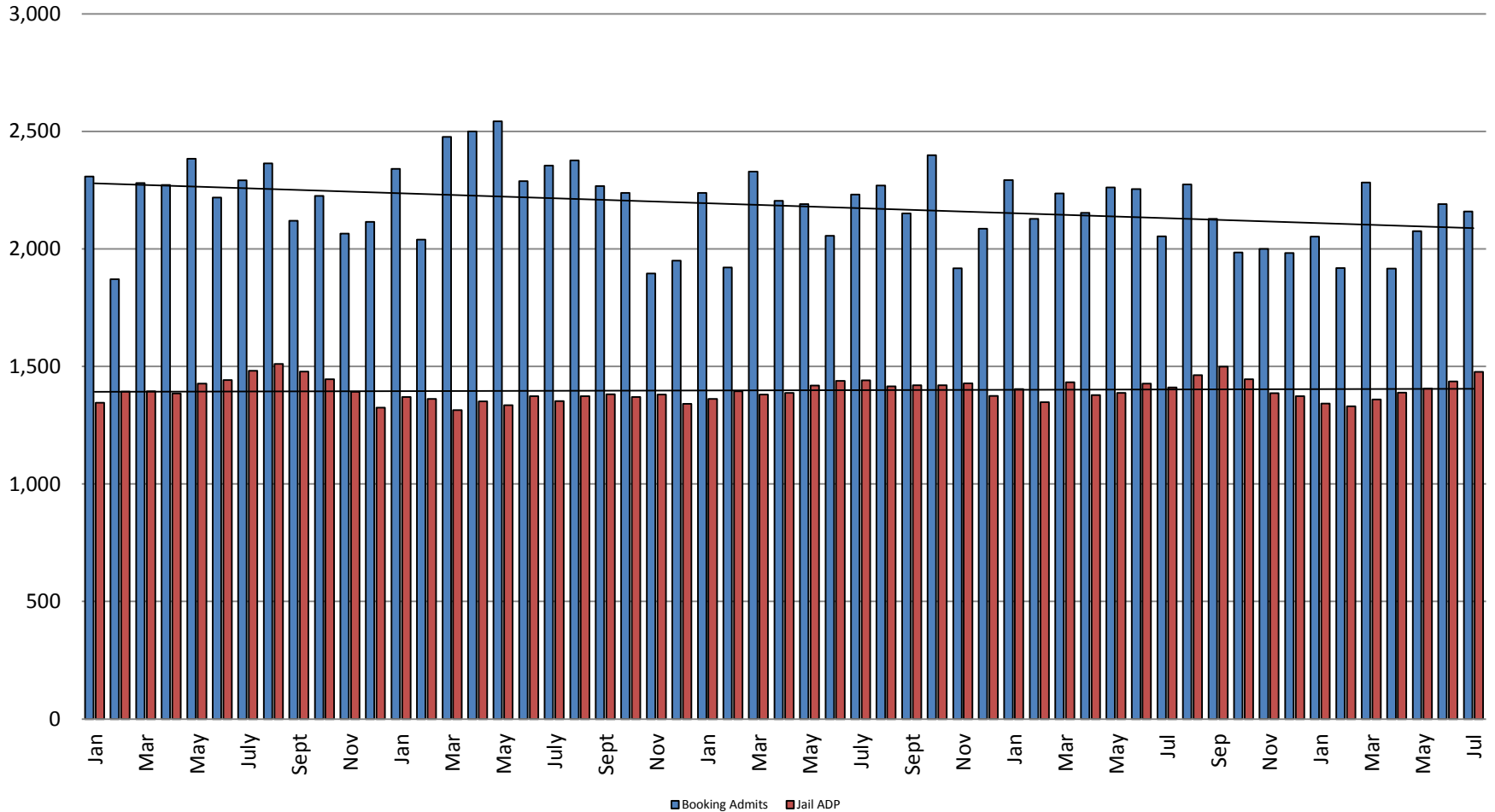
This slide shows total monthly ADP for individuals in booking, detention, work release and out-of county (combined)



Sedwick County...
working for you

(data obtained from detention facility)

Booking Admits & Total Monthly ADP (Jail): 2013 - present



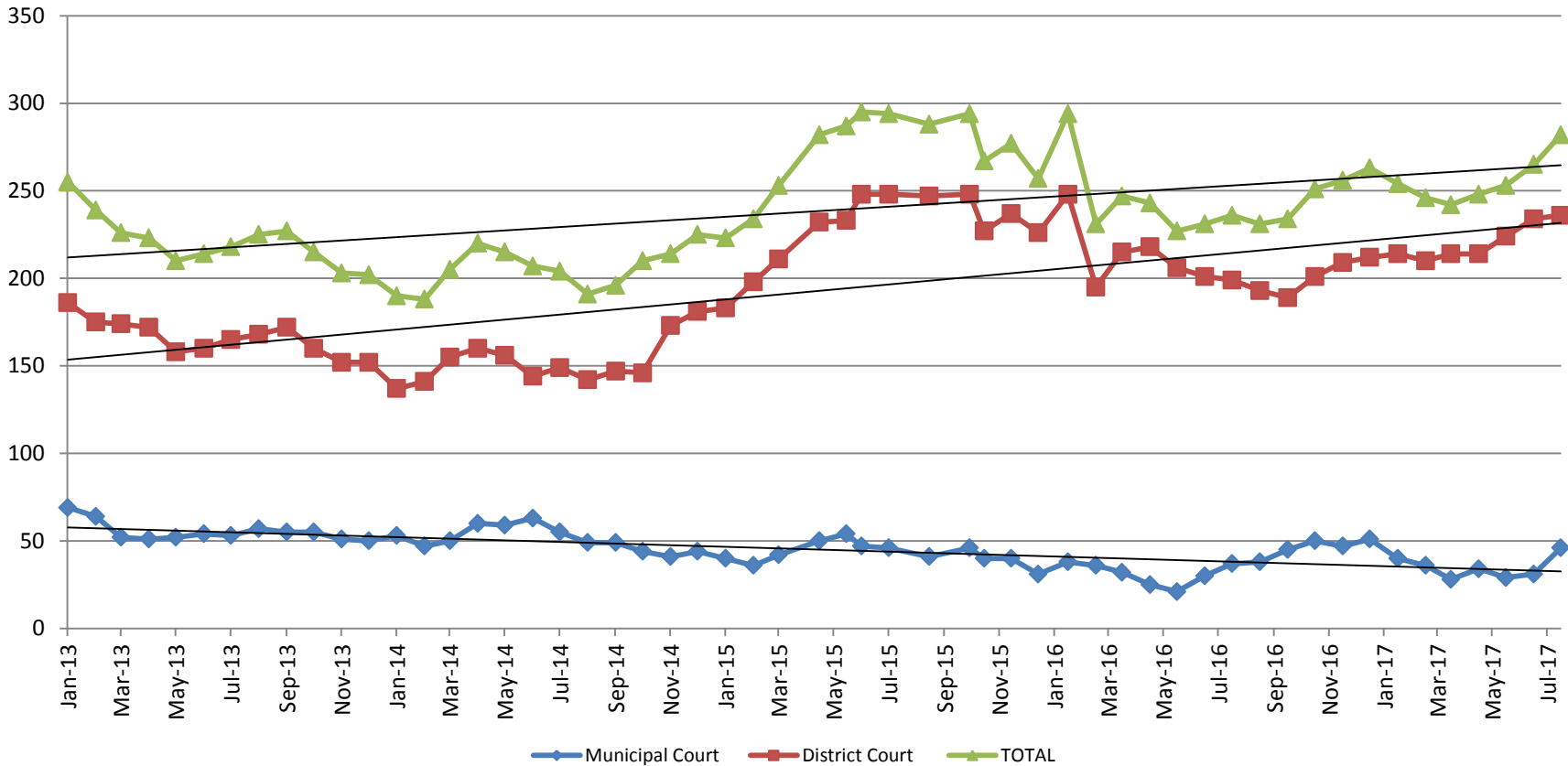
Jail includes individuals in booking, detention, work release and out-of county (combined)

(data obtained from detention facility)



Sedgwick County...
working for you

Pretrial Services Program (PSP) Monthly ADP: January 2013 - Present

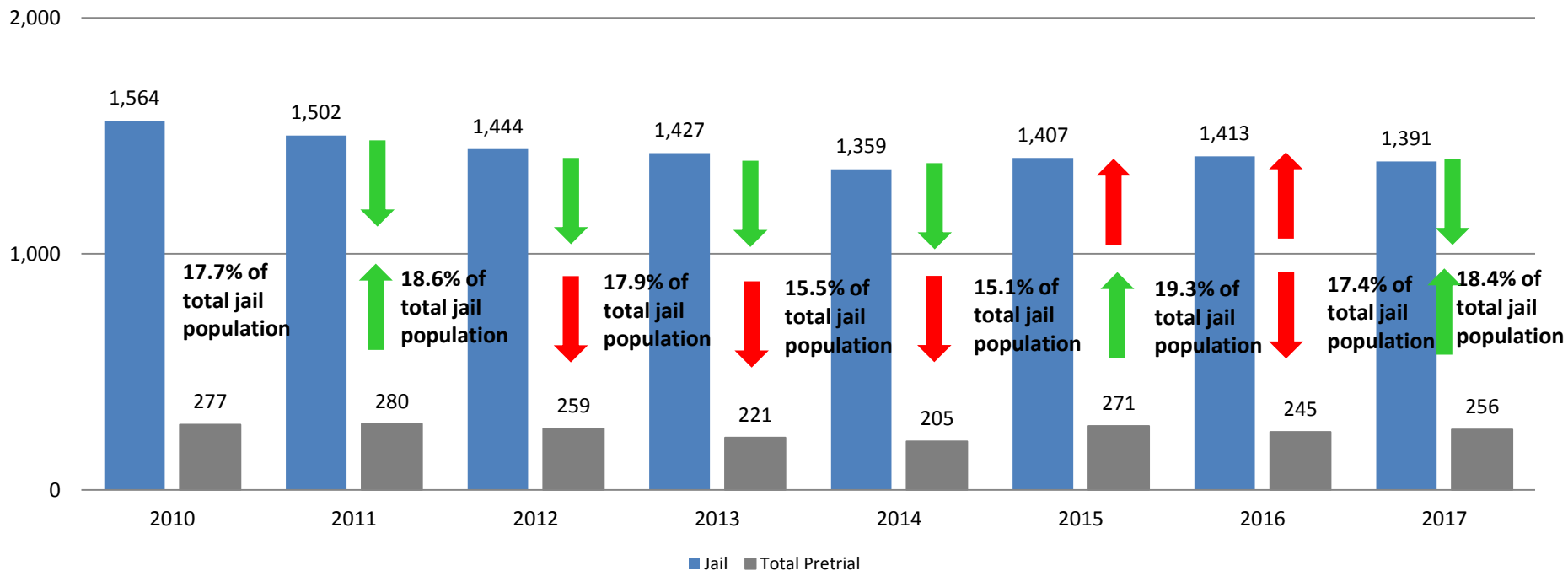


<u>July</u>	<u>2013</u>	<u>2014</u>	<u>2015</u>	<u>2016</u>	<u>2017</u>
Municipal Court	53	55	46	37	46
District Court	165	149	248	199	236
TOTAL	218	204	294	236	282

<u>July YTD Avg.</u>	<u>2013</u>	<u>2014</u>	<u>2015</u>	<u>2016</u>	<u>2017</u>
Municipal Court	56	55	45	31	35
District Court	170	149	222	212	221
TOTAL	226	204	267	244	256

Correlation: Total & PSP

Total Annual ADP: 2010 - Present

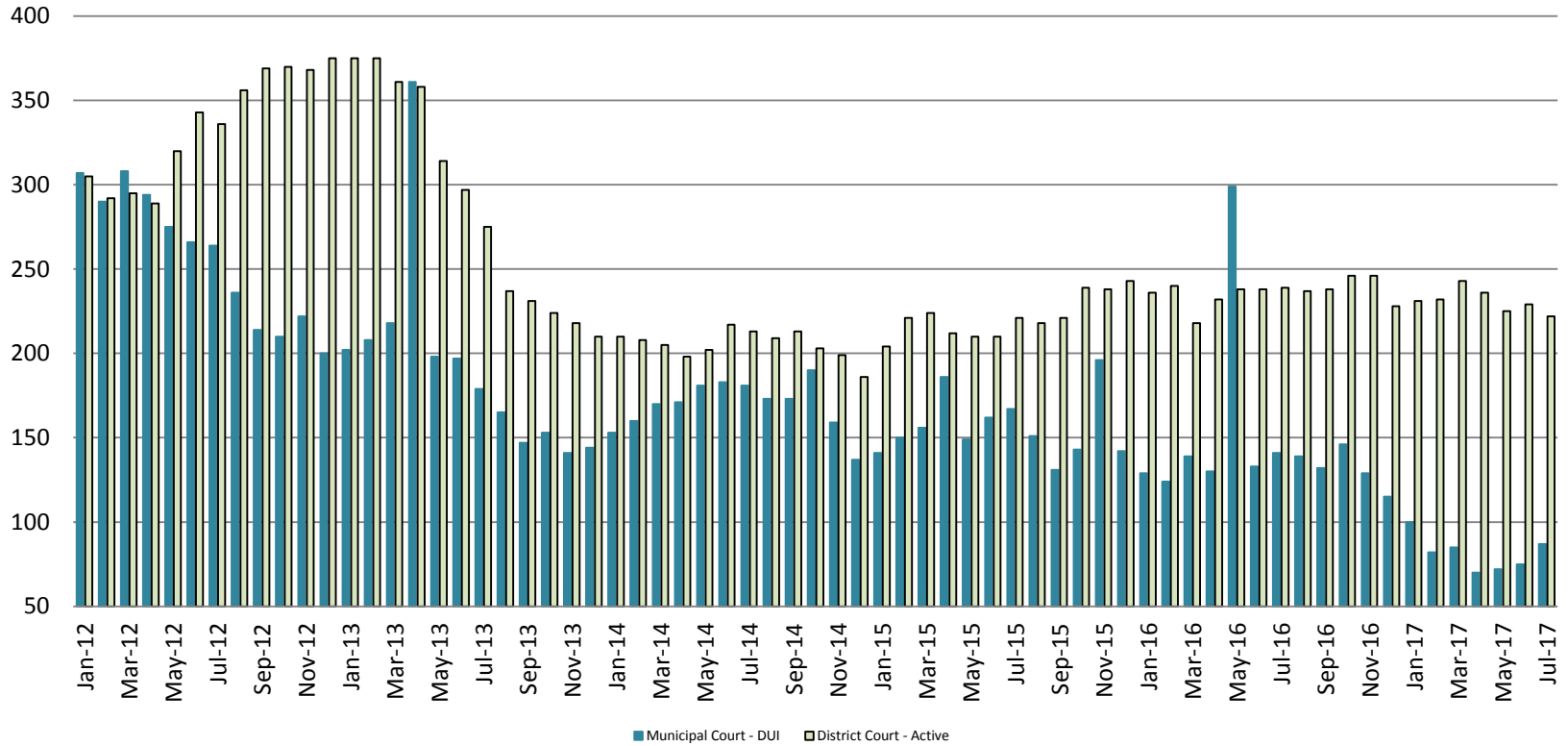


Arrows represent the overall increase/decrease of the population from year to year

Jail includes individuals in booking, detention, work release and out-of county (combined)

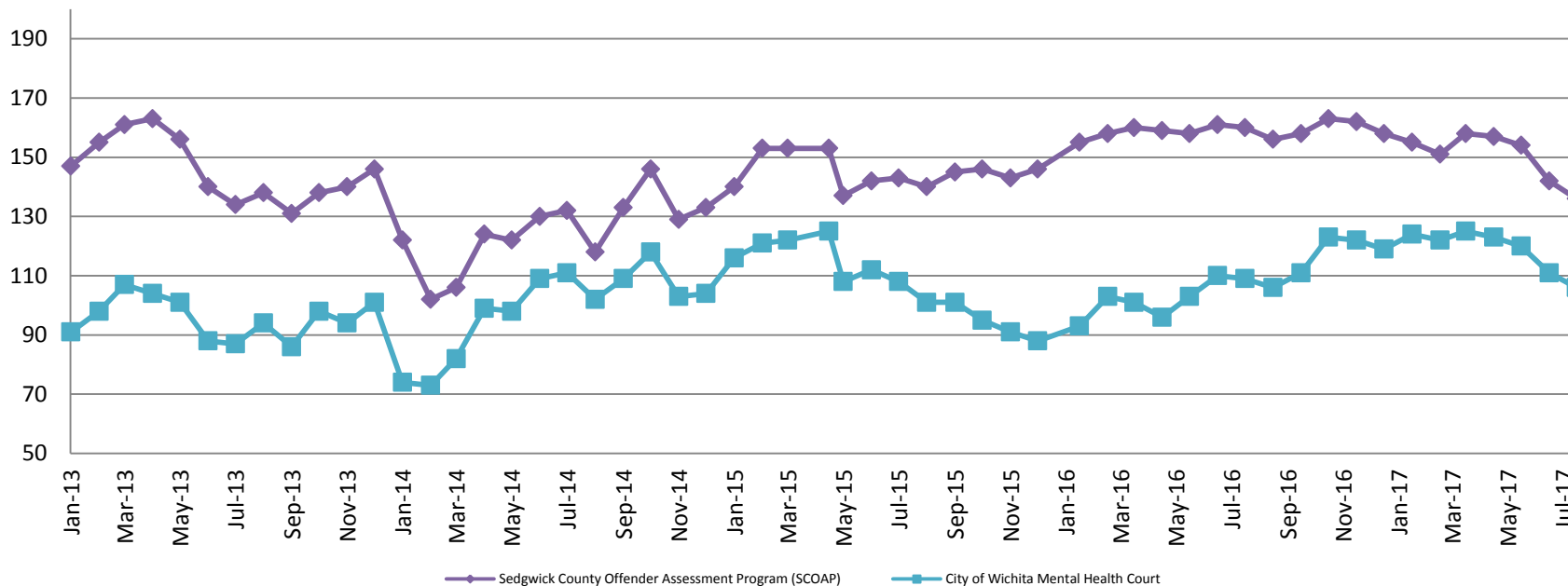


Diversion - Active Caseload January 2012 - Present



<u>July</u>	<u>2013</u>	<u>2014</u>	<u>2015</u>	<u>2016</u>	<u>2017</u>	<u>July YTD Avg.</u>	<u>2013</u>	<u>2014</u>	<u>2015</u>	<u>2016</u>	<u>2017</u>
Municipal Court- DUI	179	181	167	141	87	Municipal Court	223	171	159	156	82
District Court- Active	275	213	221	239	222	District Court	336	208	215	234	231

Mental Health - ADP 2013 - present

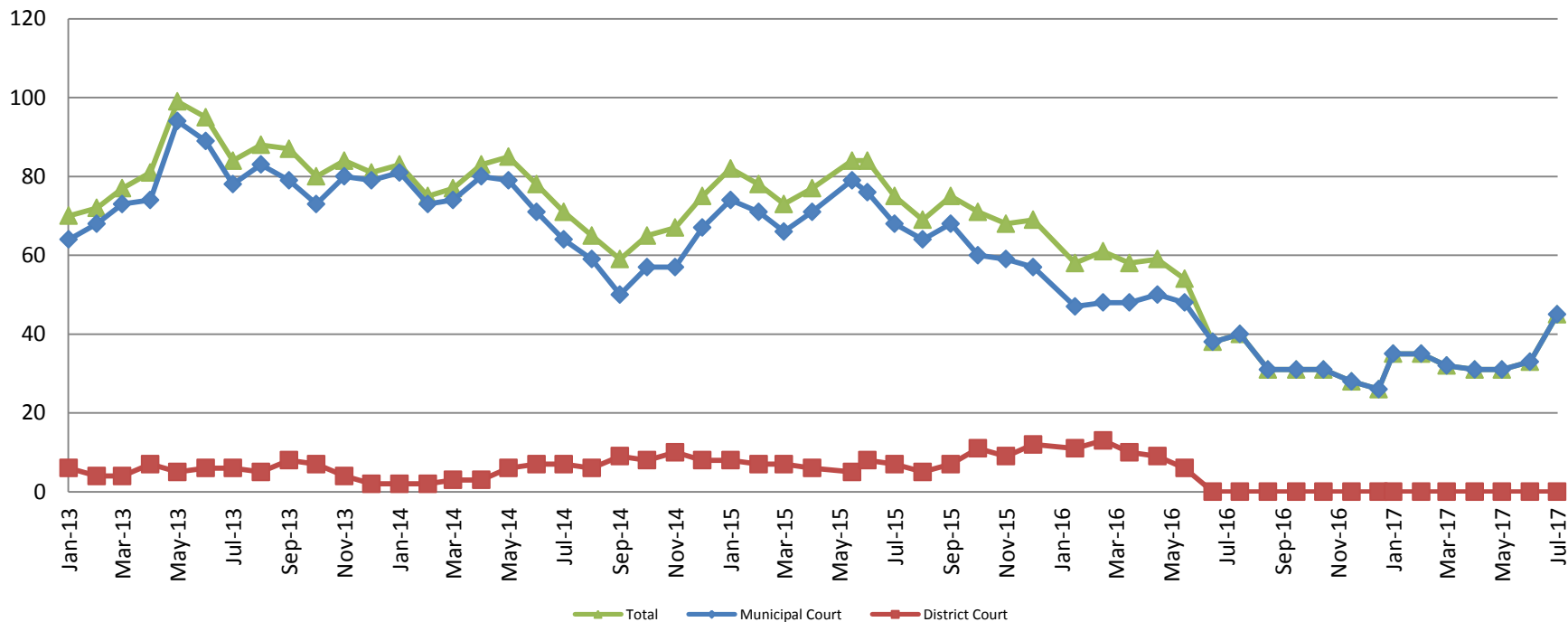


July:	2013	2014	2015	2016	2017
SCOAP	134	132	143	160	136
CoW – MH Court	87	111	108	109	106
July YTD Avg.	2013	2014	2015	2016	2017
SCOAP	151	120	146	159	150
CoW – MH Court	97	92	116	102	119

(data obtained from COMCARE)



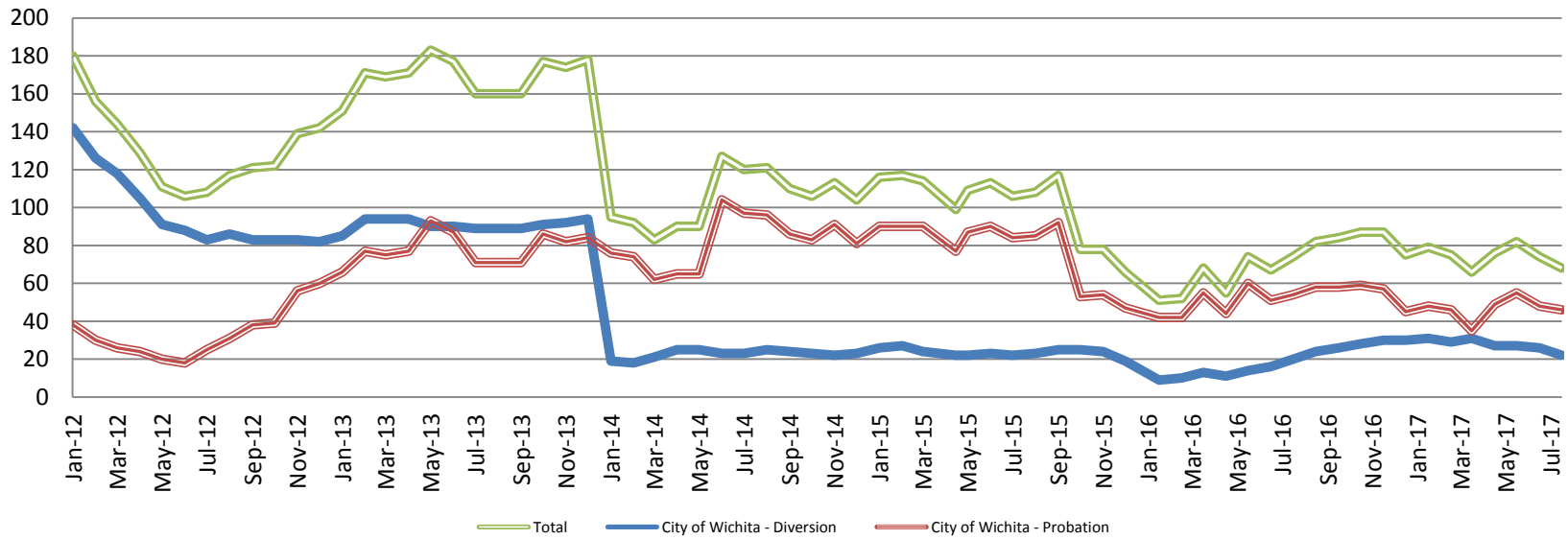
Day Reporting - Active Caseload 2013-present



July	2013	2014	2015	2016	2017
Municipal Court	78	64	68	40	45
District Court	6	7	7	0*	0*
TOTAL	84	71	75	40	45
July YTD Avg.	2013	2014	2015	2016	2017
Municipal Court	77	75	72	46	35
District Court	5	4	7	0*	0*
TOTAL	83	79	79	53	35



Drug Court - City of Wichita ADP: 2012 - present



July CoW Diversion

2013 = 89
2014 = 23
2015 = 22
2016 = 20
2017 = 22

July YTD Avg.

2013 = 91
2014 = 22
2015 = 24
2016 = 13
2017 = 28

July CoW Probation

2013 = 71
2014 = 97
2015 = 84
2016 = 54
2017 = 46

July YTD Avg.

2013 = 78
2014 = 78
2015 = 87
2016 = 50
2017 = 47

July CoW Total

2013 = 160
2014 = 120
2015 = 106
2016 = 74
2017 = 68

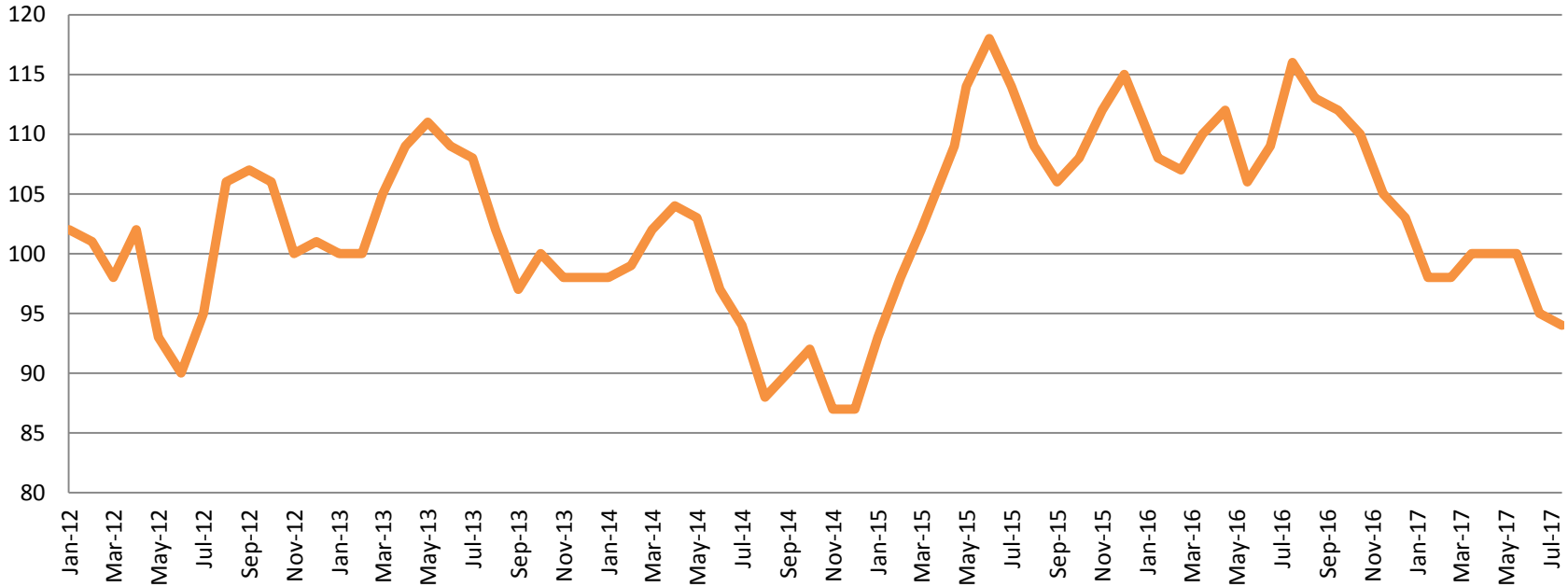
July YTD Avg.

2013 = 169
2014 = 100
2015 = 111
2016 = 63
2017 = 74

(data obtained from CoW)



Drug Court - Sedgwick County ADP: 2012 - present



July SG CO

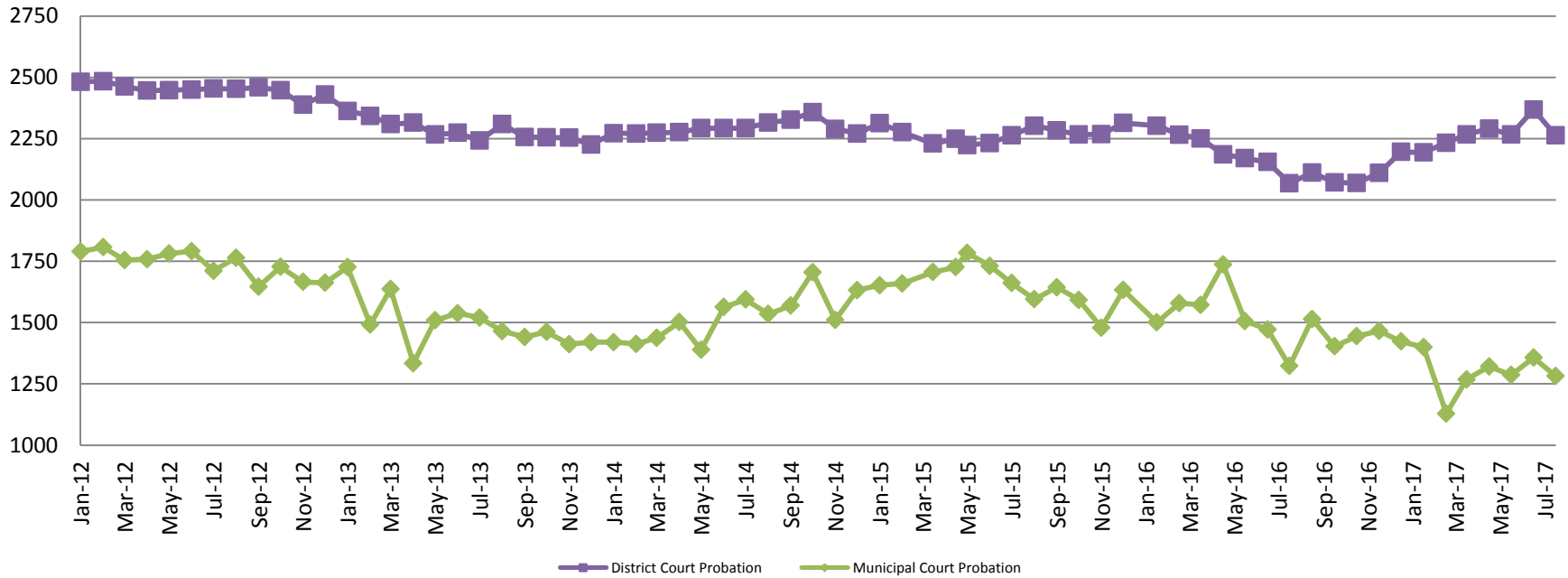
2013 = 108
2014 = 94
2015 = 114
2016 = 116
2017 = 94

July YTD Avg.

2013 = 106
2014 = 100
2015 = 107
2016 = 110
2017 = 98

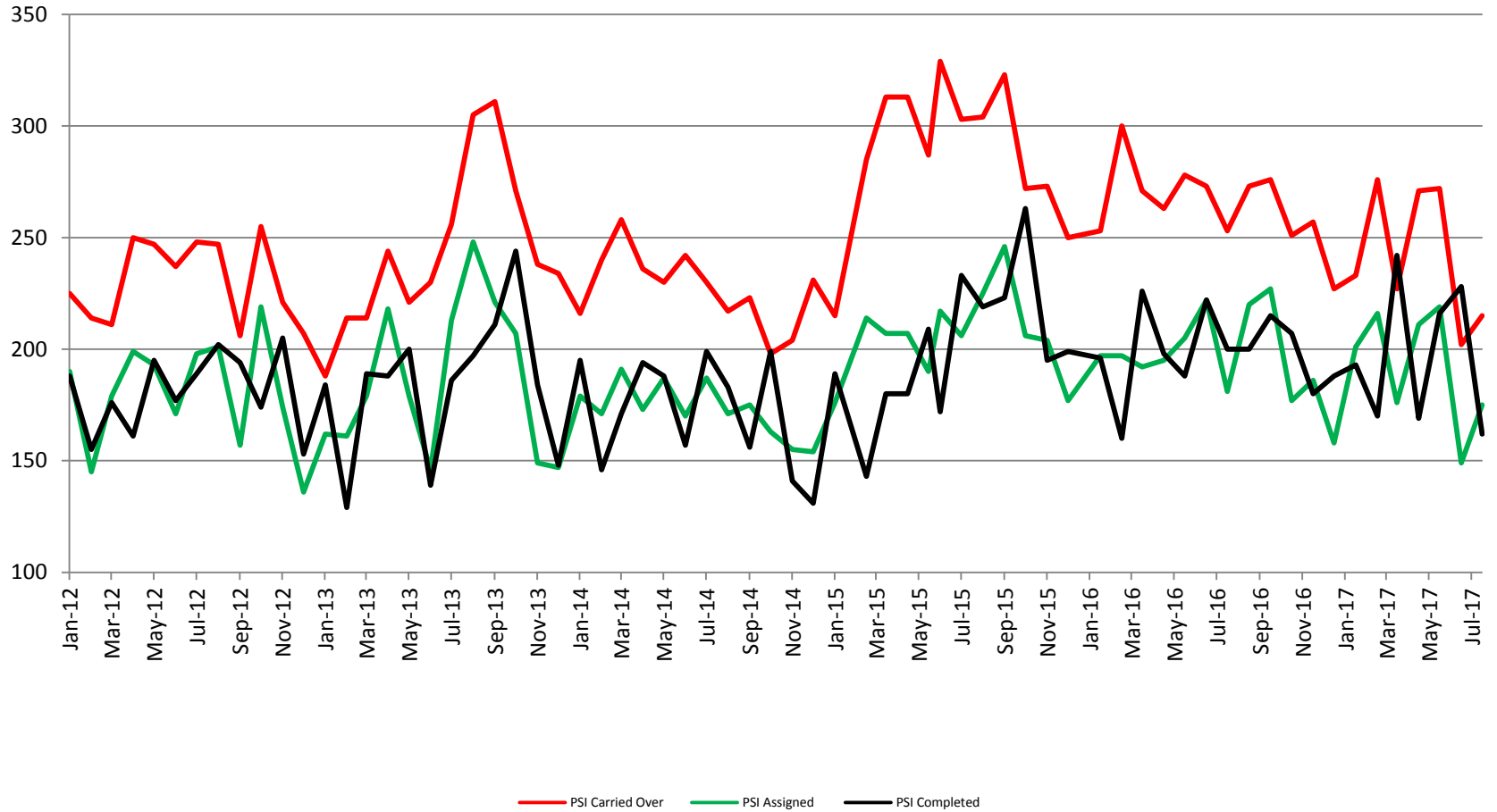
(data obtained from Pretrial Services)

Probation - Active Caseloads 2012 - present



July	2013	2014	2015	2016	2017
District Court	2,242	2,293	2,263	2,068	2,263
Municipal Court	1,520	1,594	1,661	1,323	1,282
July YTD Avg.	2013	2014	2015	2016	2017
District Court	2,302	2,282	2,255	2,200	2,269
Municipal Court	1,537	1,474	1,703	1,527	1,292

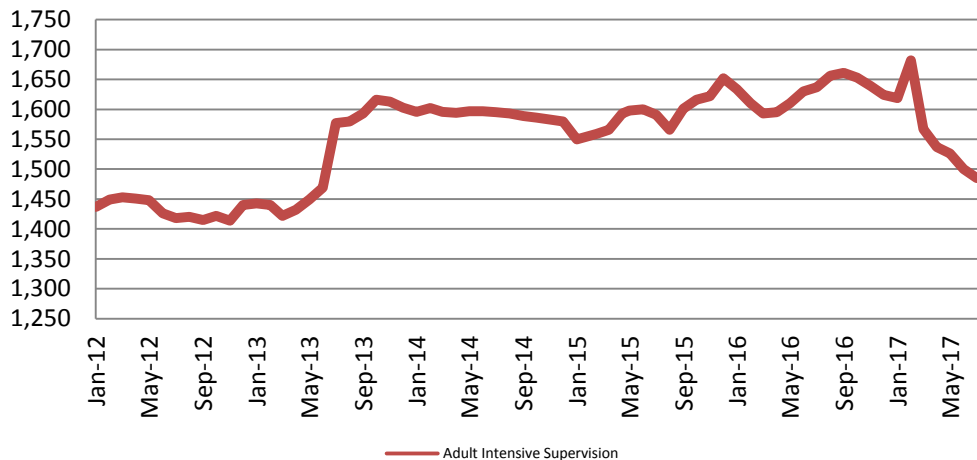
District Court Probation: Pre-Sentence Investigation 2012 - present



(data obtained from District Court)

Community Corrections

Adult Intensive Supervision Probation (AISP) ADP 2012 - present



July	July YTD Avg.
2013 = 1,577	2013 = 1,462
2014 = 1,595	2014 = 1,597
2015 = 1,591	2015 = 1,580
2016 = 1,637	2016 = 1,616
2017 = 1,485	2017 = 1,559

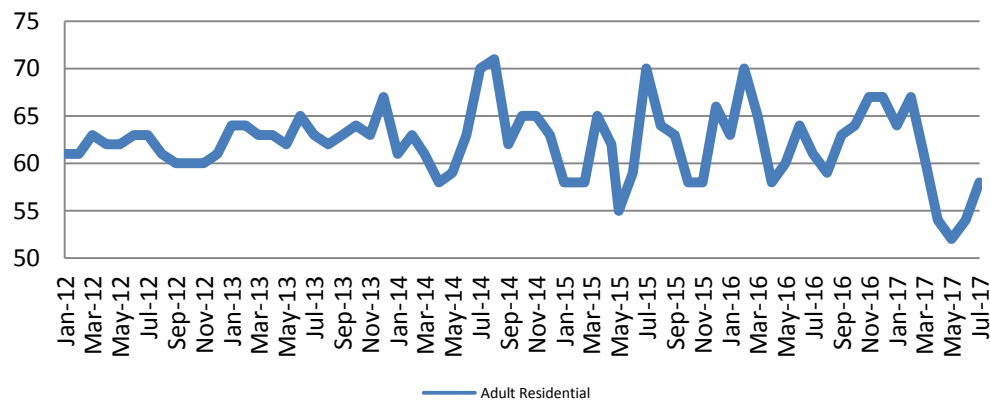
(data obtained from SG CO Dept. of Corrections)

*KDOC changed population count to include drug court, residential and AISP beginning July 2013.

July	July YTD Avg.
2013 = 63	2013 = 63
2014 = 70	2014 = 62
2015 = 70	2015 = 61
2016 = 61	2016 = 63
2017 = 58	2017 = 59

(data obtained from SG CO Dept. of Corrections)

Adult Residential: ADP 2012 - present



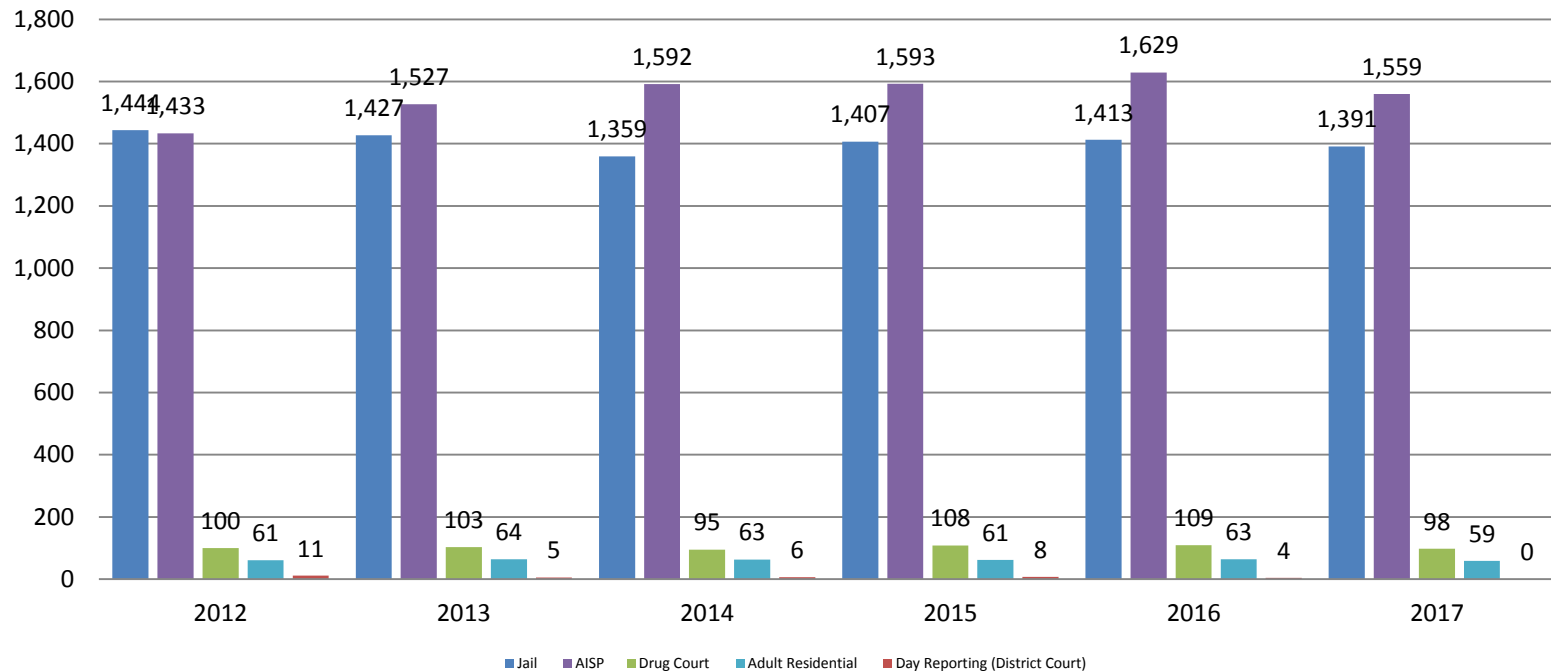
Adult Residential



Sedgwick County...
working for you

Correlation: Total & Sedgwick County Programs (Adult)

Total Annual ADP: 2012 - Present



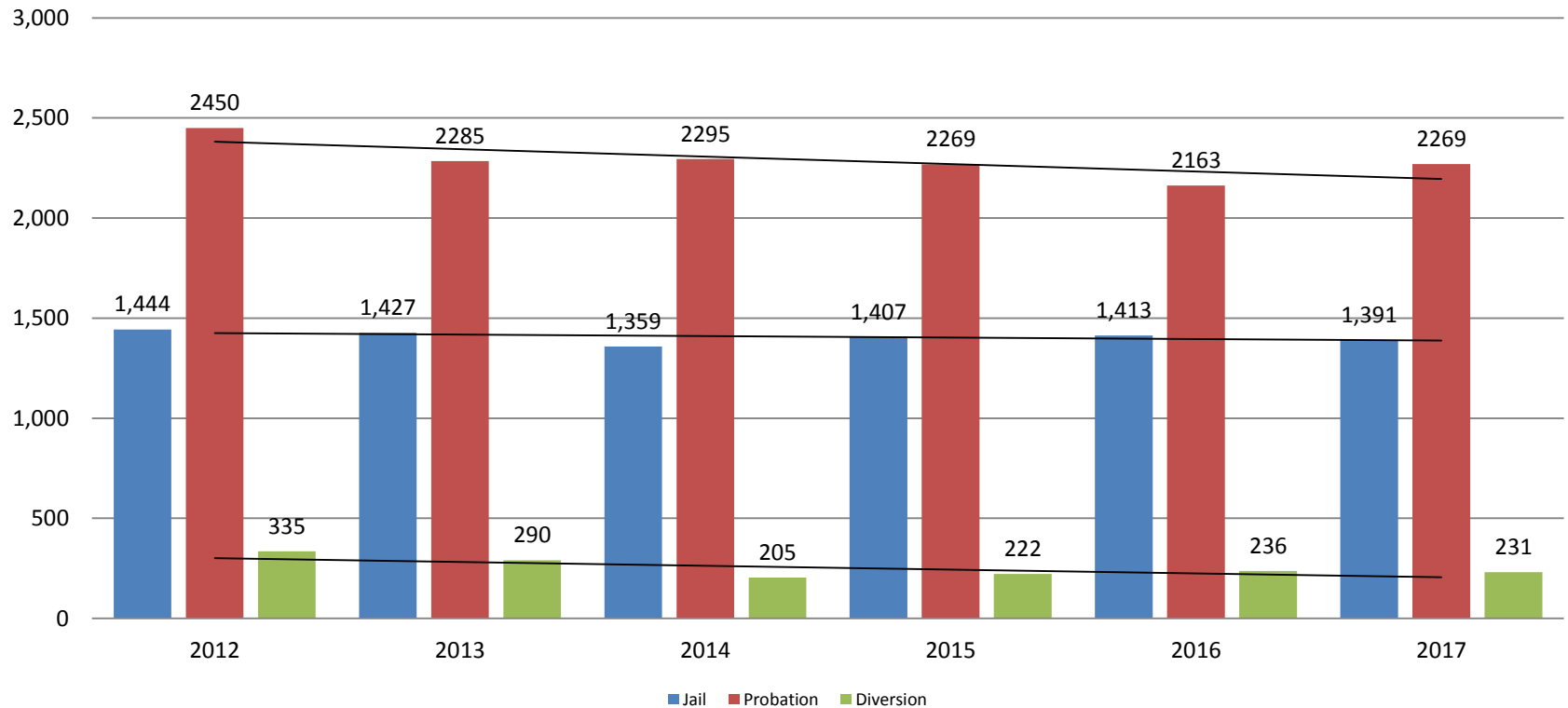
Jail includes individuals in booking, detention, work release and out-of county (combined)

(data obtained from detention facility, SG Dept. of Corrections, Pretrial Services, & CoW)



Correlation: Total & District Court Programs

Total Annual ADP: 2012 - Present

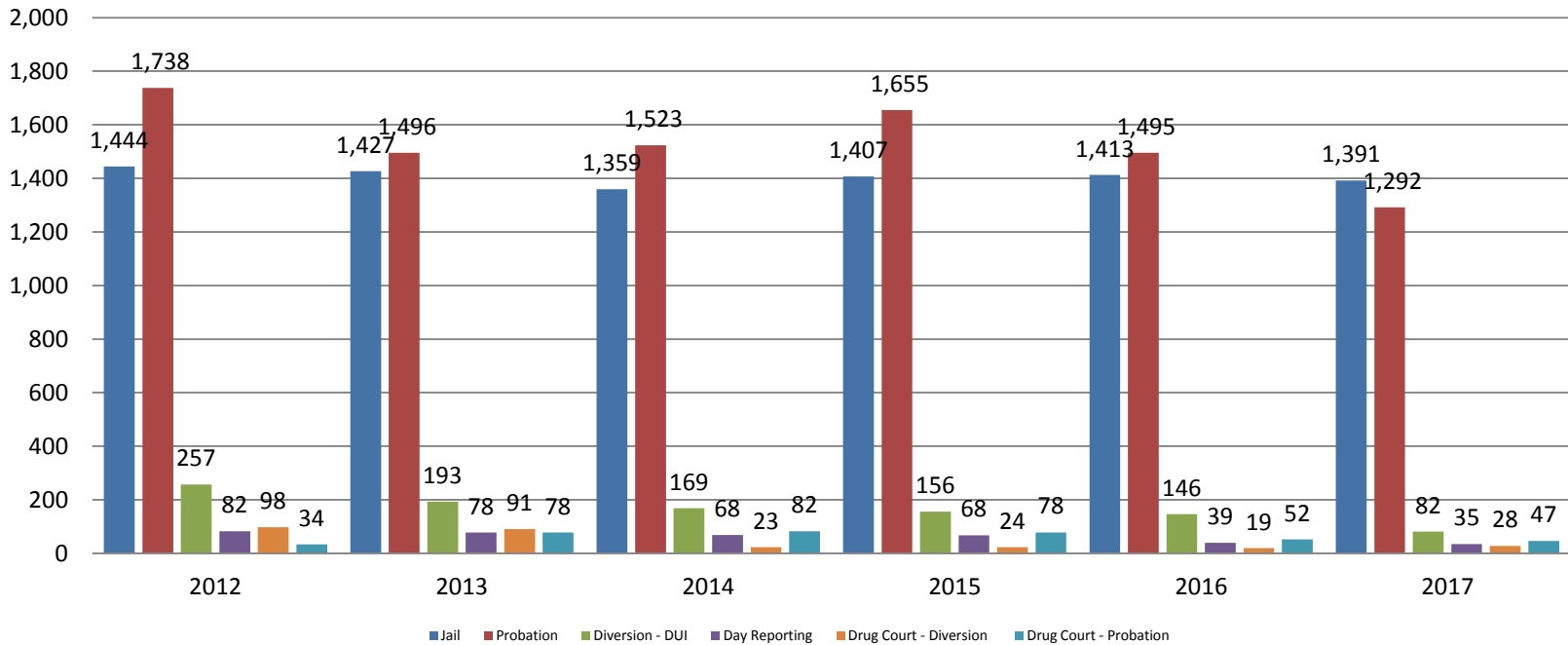


Jail includes individuals in booking, detention, work release and out-of county (combined)



Correlation: Total & City of Wichita / Municipal Court Programs

Total Annual ADP: 2012 - present

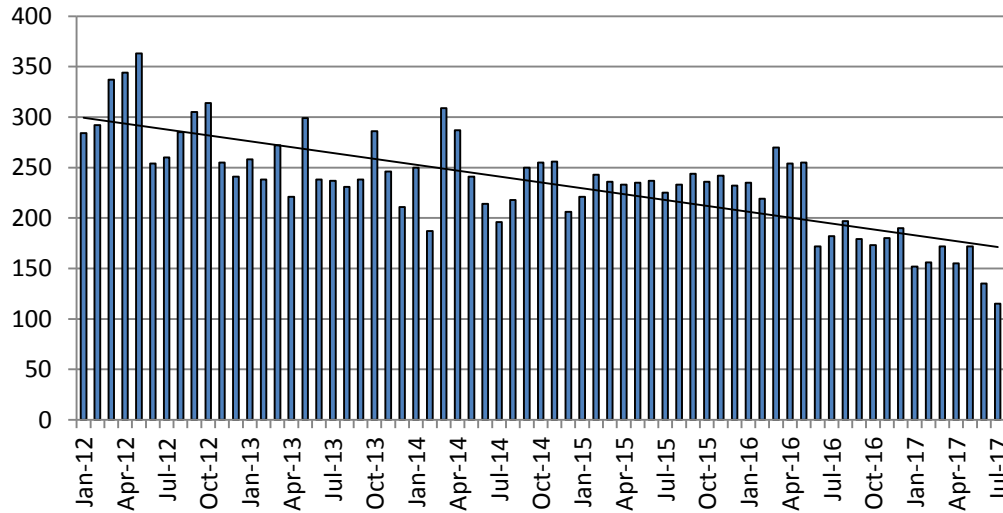


Jail includes individuals in booking, detention, work release and out-of county (combined)



Juvenile

JIAC Intakes: 2012 - present



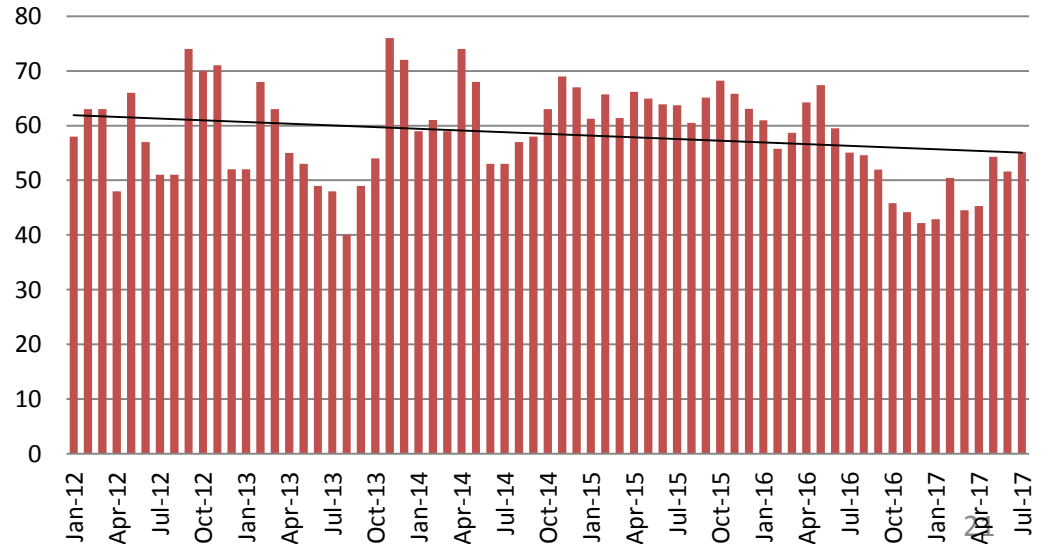
July	July YTD Average
2013 = 237	2013 = 252
2014 = 196	2014 = 241
2015 = 225	2015 = 233
2016 = 182	2016 = 227
2017 = 115	2017 = 151

(data obtained from SG CO Dept. of Corrections)

July	July YTD Avg.
2013 = 48	2013 = 55
2014 = 53	2014 = 61
2015 = 64	2015 = 64
2016 = 55	2016 = 60
2017 = 55	2017 = 49

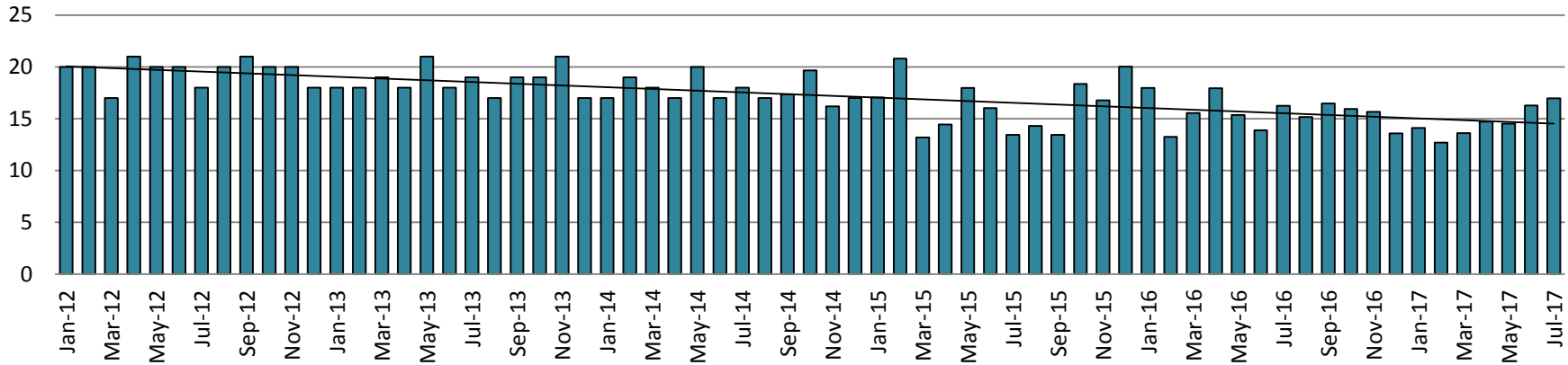
(data obtained from SG CO Dept. of Corrections)

JDF ADP: 2012 - present

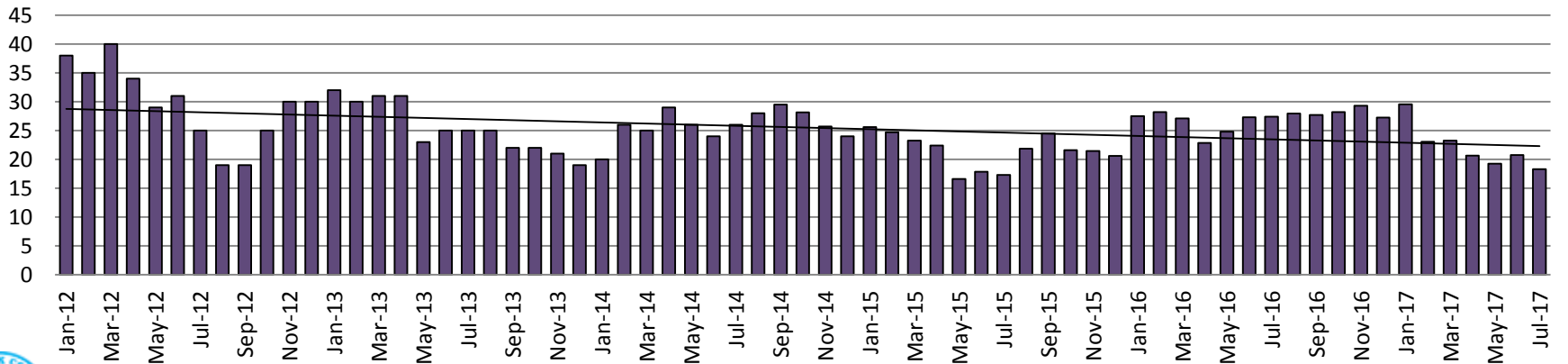


Juvenile Detention Alternatives

Juvenile Residential Facility (JRF) ADP: 2012 - present

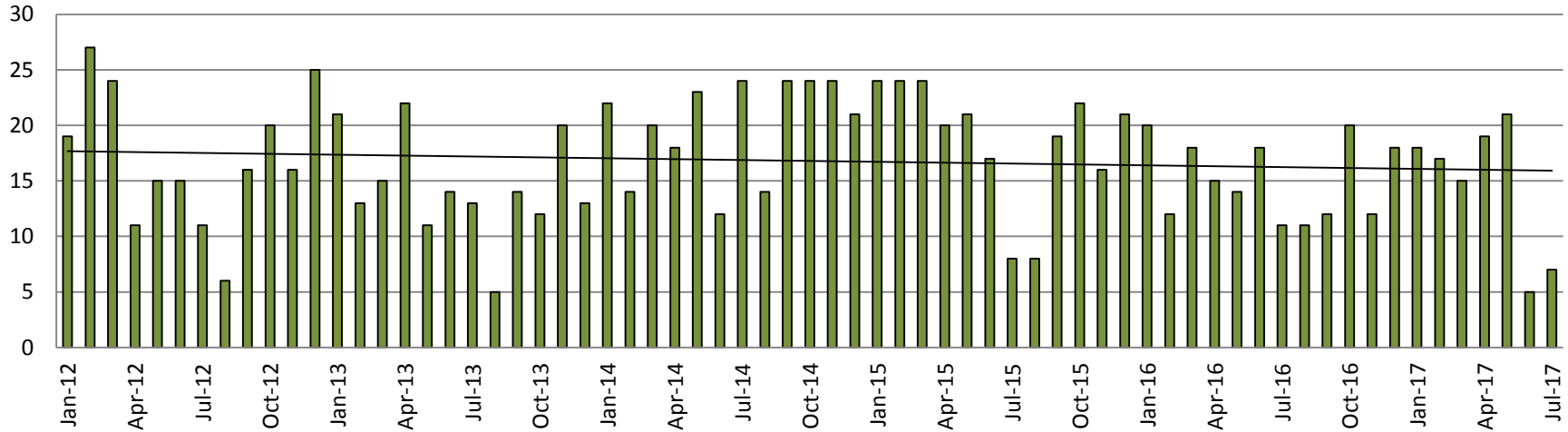


Home-Based Supervision ADP: 2012 - present

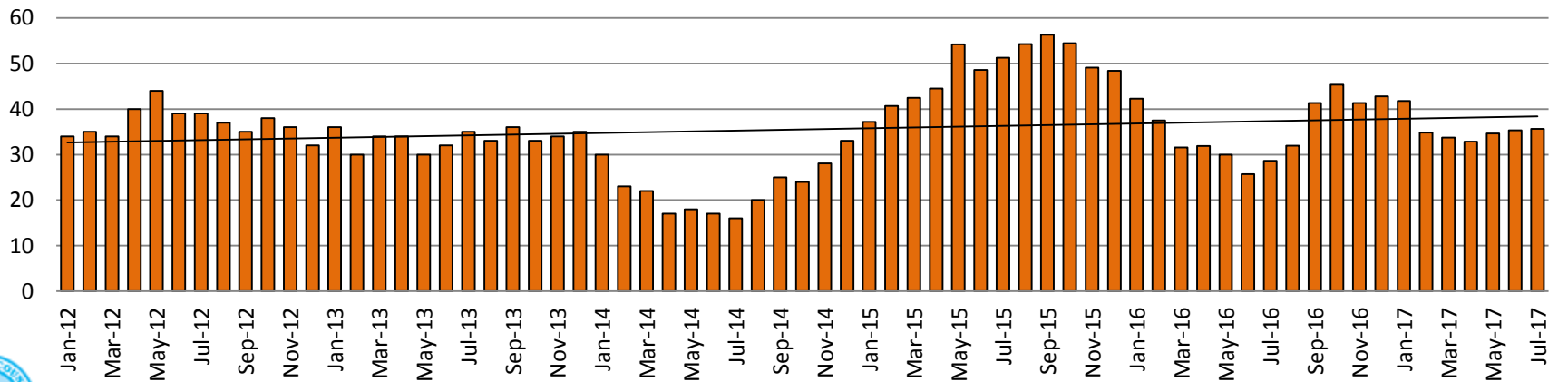


Juvenile Detention Alternatives

Weekend Alternative Detention Program 2012 - present



Detention Advocacy Case Management Services ADP: 2012 - present



Juvenile Detention Services

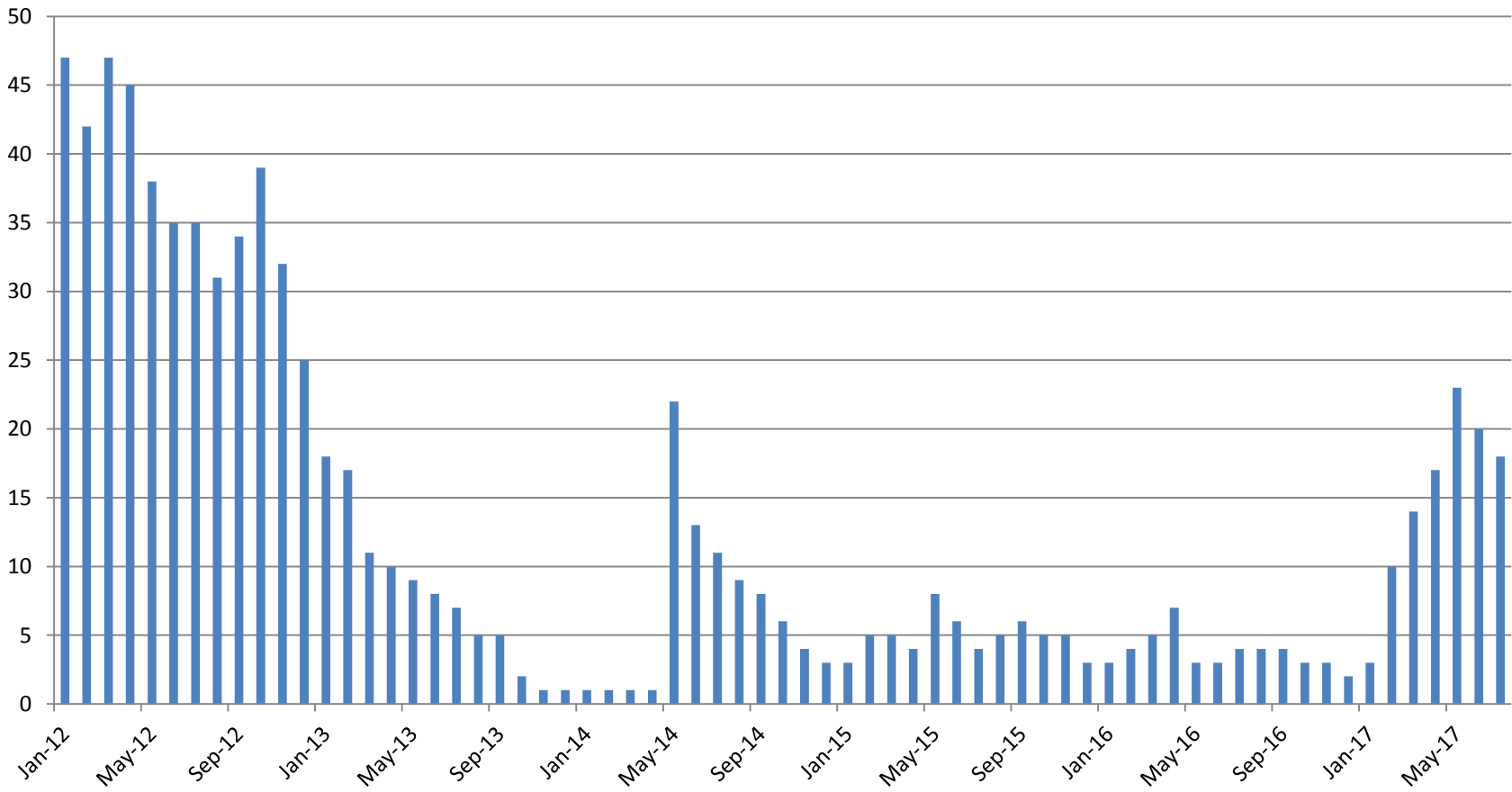
July ADP	2014	2015	2016	2017
Juvenile Detention Facility	53	64	55	55
Juvenile Residential Facility	18	13	16	17
Home Based Supervision	26	17	27	18
Detention Advocacy Case Management Services	16	51	29	36
Weekend Alternative Detention Program (total)	24	8	11	7

July YTD AVERAGE	2014	2015	2016	2017
Juvenile Detention Facility	61	64	60	49
Juvenile Residential Facility	18	16	16	15
Home Based Supervision	25	21	26	22
Detention Advocacy Case Management Services	20	46	33	36
Weekend Alternative Detention Program	19	20	15	15



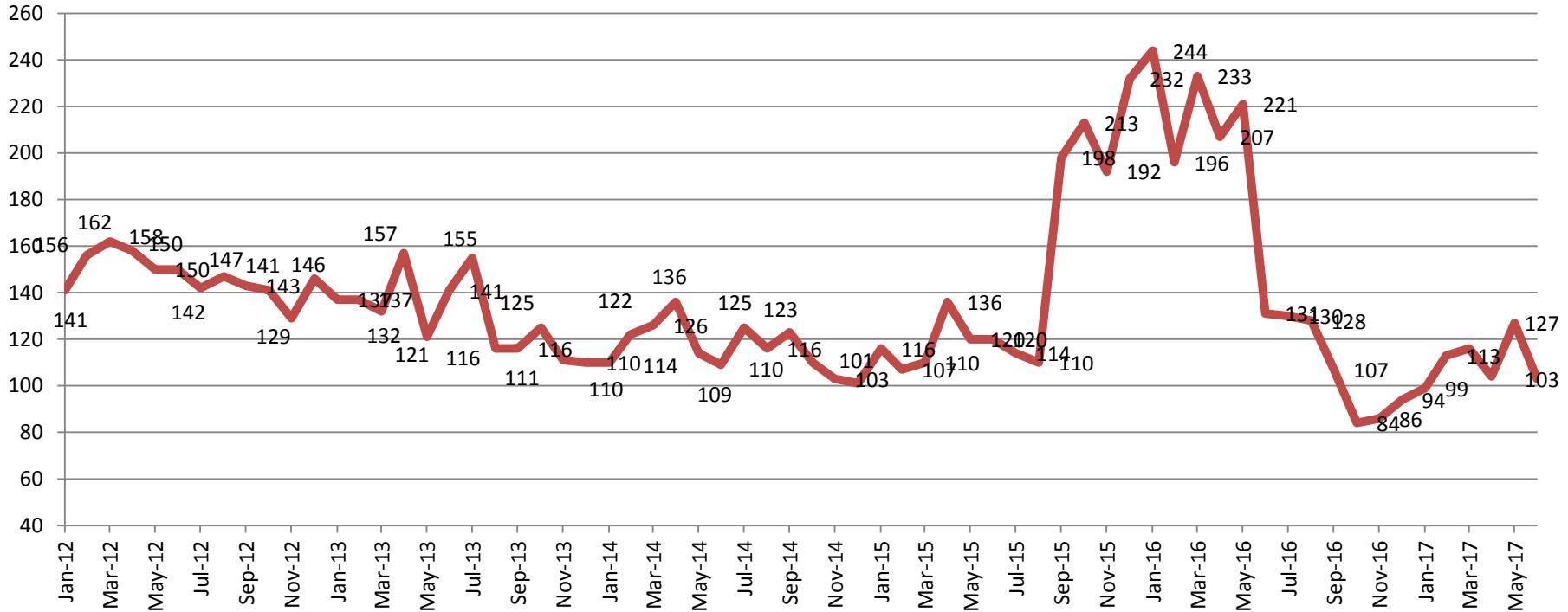
Monthly Jail Snapshot: July 31, 2017

BICE Holds 2012-Present



Monthly Jail Snapshot: July 31, 2017

Felony Commitments: February 2012 - present



July:

2012 = 150

2015 = 120

2013 = 141

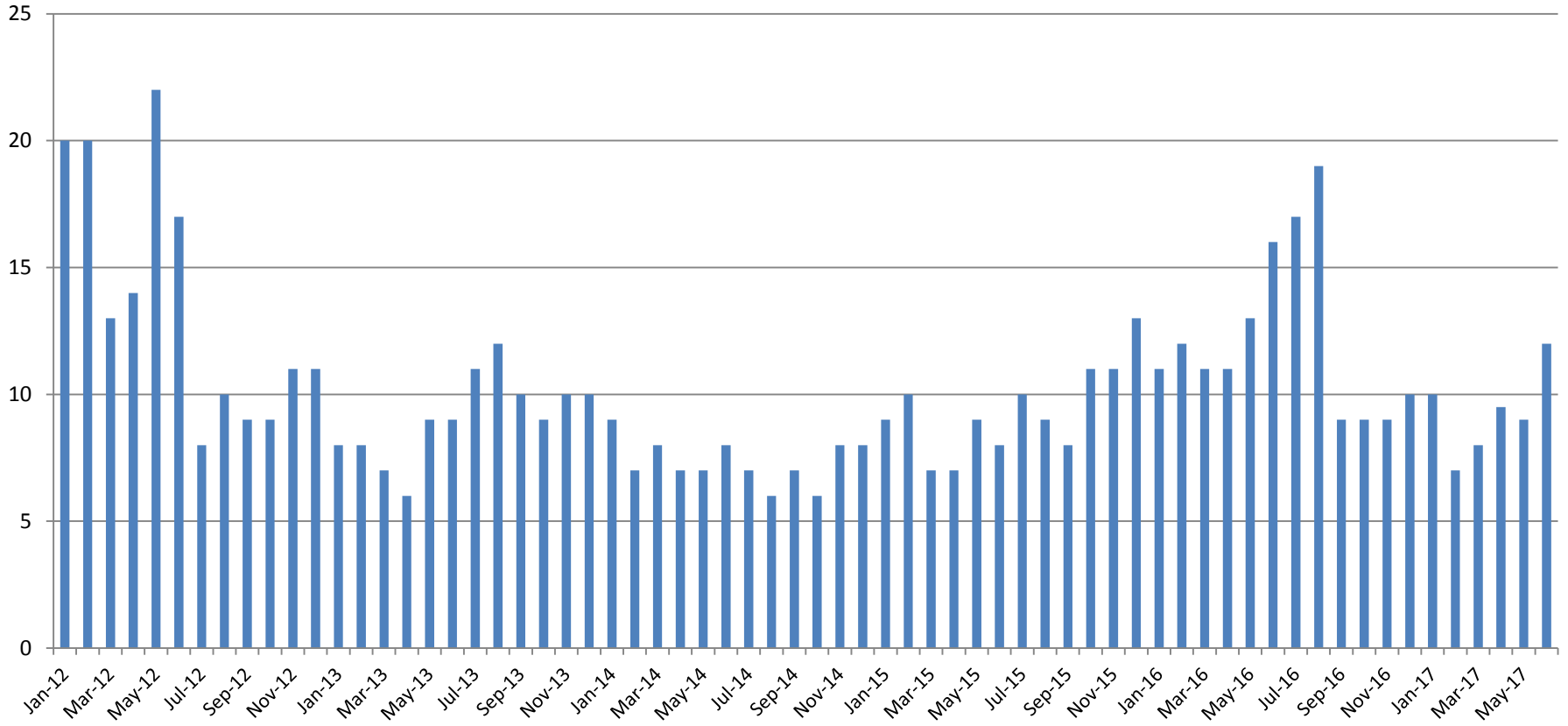
2016 = 131

2014 = 109

2017 = 103



Journal Entry Completion (Average Days) January 2013-Present



This data is always reported a month behind

