

# Criminal Justice Coordinating Council

## Population Report & Program Trends

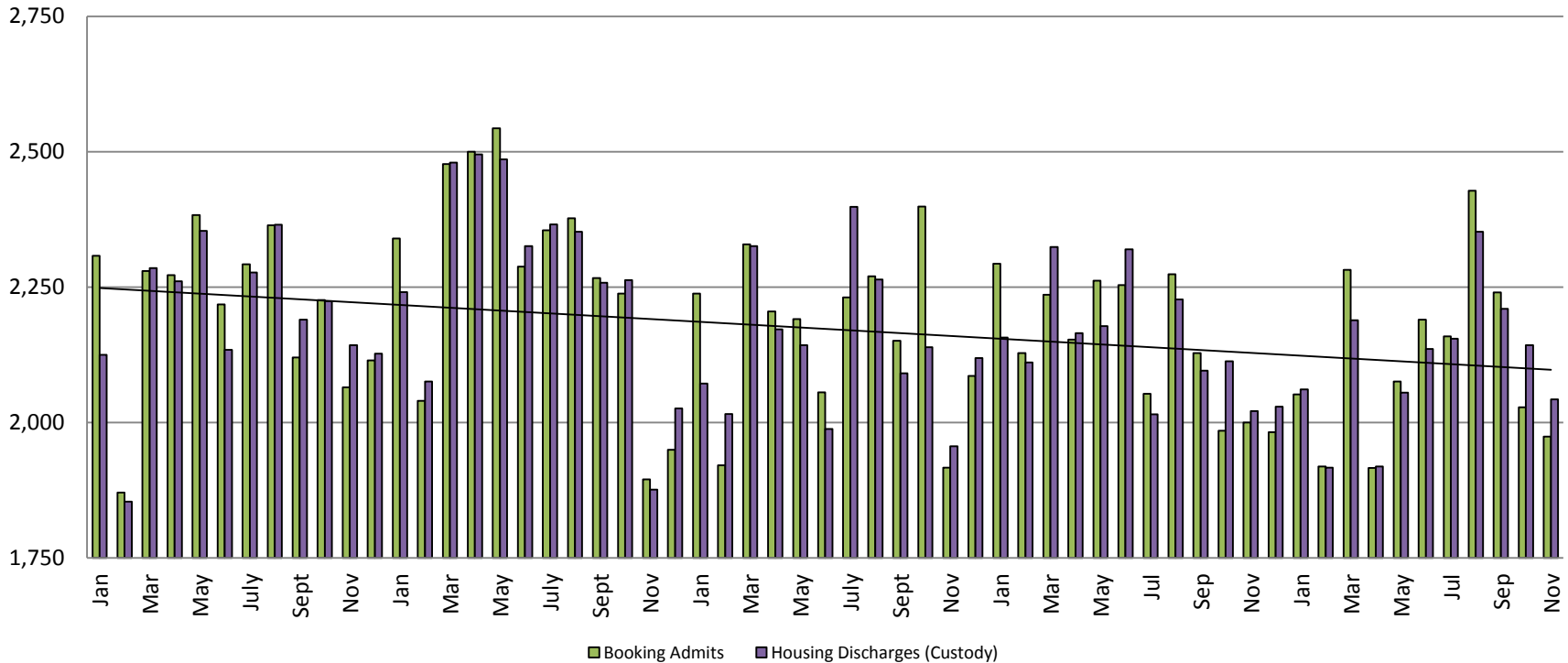
December 2017



*Sedgwick County...*  
*working for you*

# Detention Facility

## Booking Admits & Housing Discharges from Custody January 2013 - Present



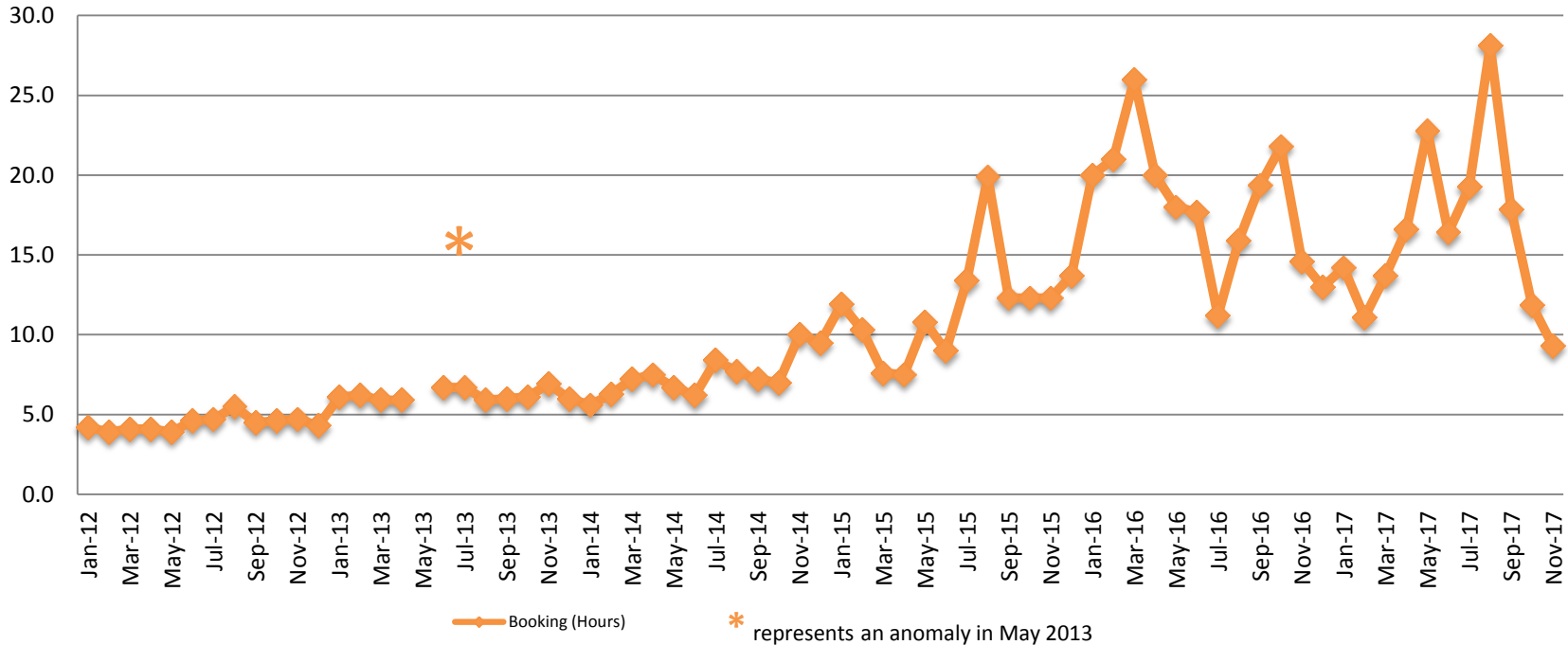
### Bookings for November

2015 = 1,917  
 2016 = 2,000  
 2017 = 1,974

### Housing Discharges for November

2015 = 1,956  
 2016 = 2,021  
 2017 = 2,043

## Average Length of Stay: Booking (Hours) January 2012 - Present



### November

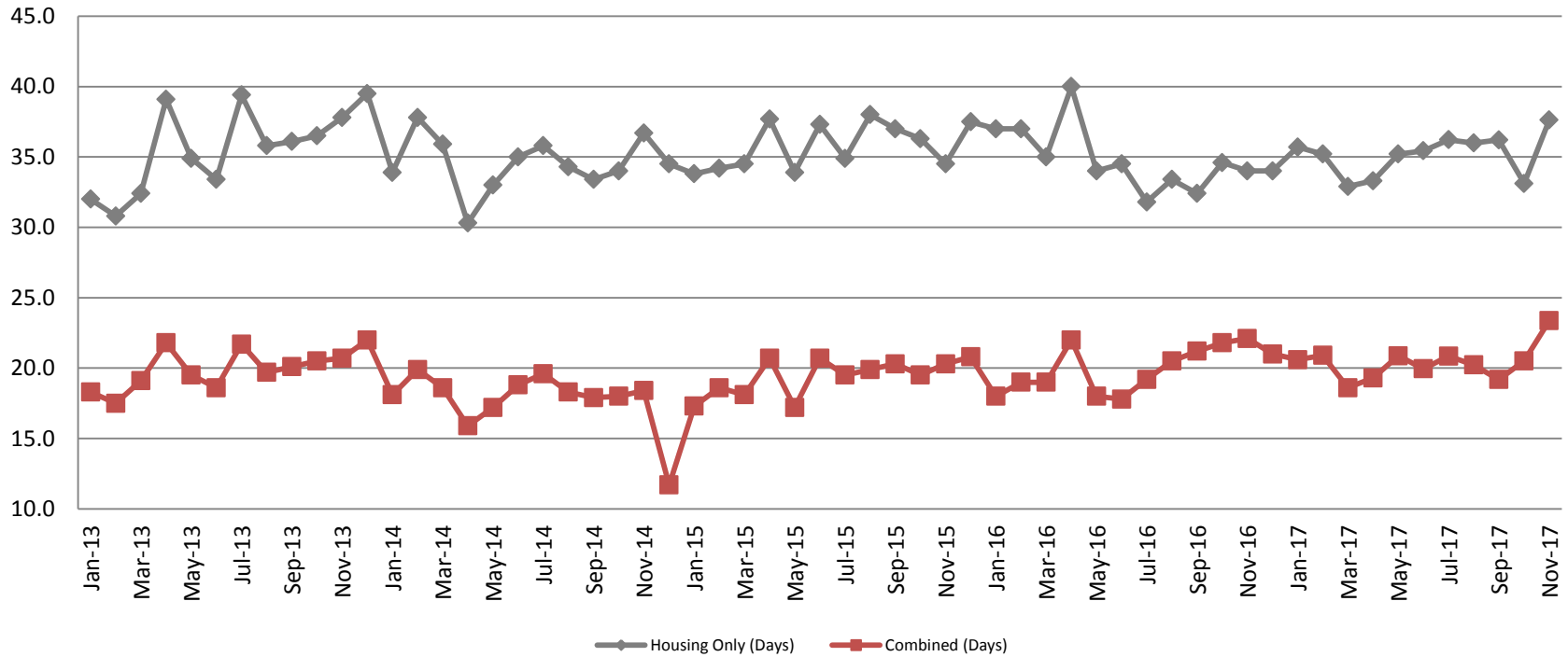
2012 = 4.7    2015 = 12.3  
 2013 = 6.9    2016 = 14.6  
 2014 = 10.0    2017 = 9.3

### November YTD Avg.

2012 = 4.4    2015 = 11.6  
 2013 = 7.1    2016 = 18.7  
 2014 = 7.3    2017 = 16.5



## Average Length of Stay: Housing & Combined (Days) January 2013 - Present



### November Housing

2013 = 37.8  
 2014 = 36.7  
 2015 = 34.5  
 2016 = 34.0  
 2017 = 37.6

### November Housing YTD Avg.

2013 = 35.3  
 2014 = 34.6  
 2015 = 35.6  
 2016 = 34.9  
 2017 = 35.2

### November Combined

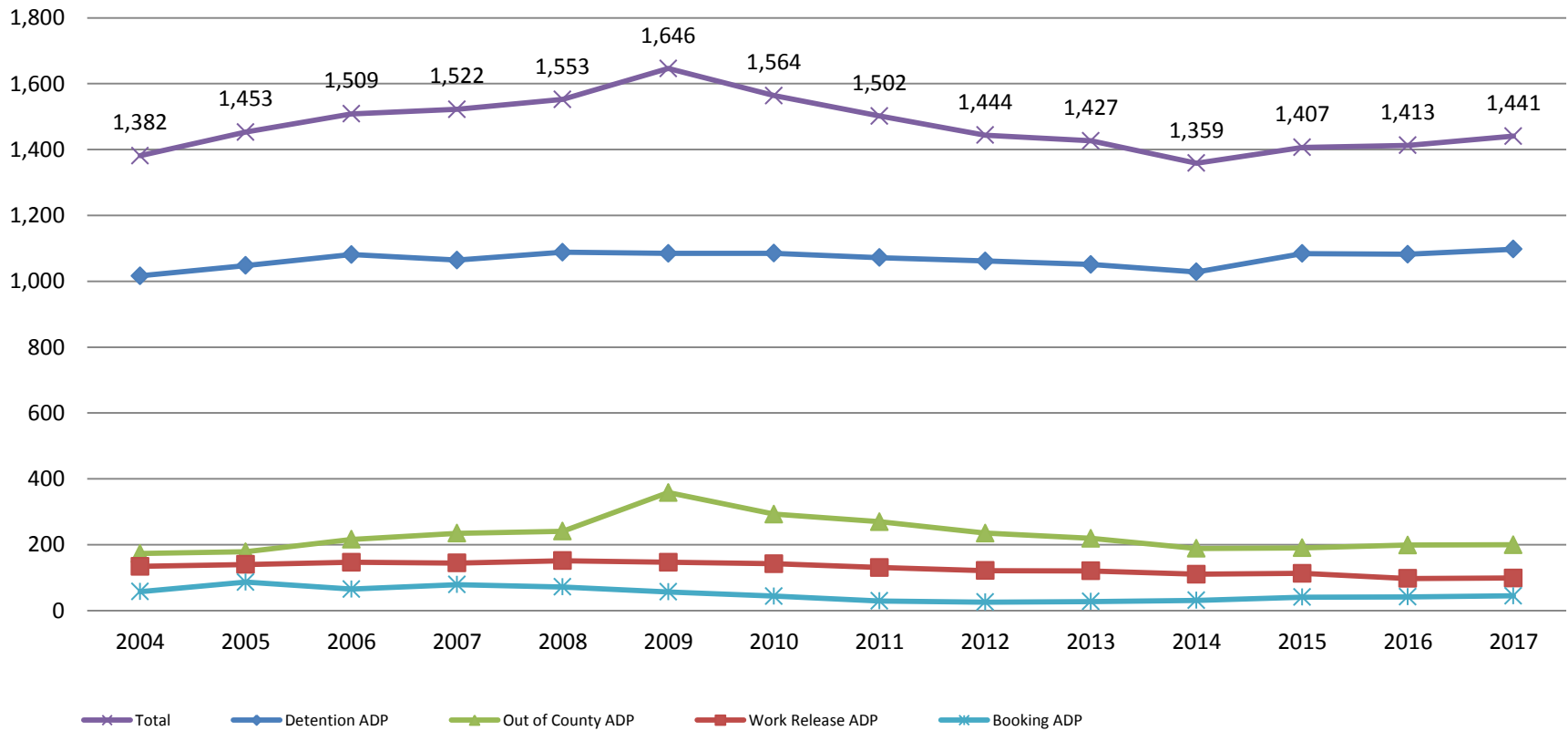
2013 = 20.7  
 2014 = 18.4  
 2015 = 20.3  
 2016 = 22.1  
 2017 = 23.4

### November Combined YTD Avg.

2013 = 19.8  
 2014 = 18.2  
 2015 = 19.3  
 2016 = 19.9  
 2017 = 20.4

# Jail: Annual Average Daily Population (ADP)

**TRENDS: Booking, Detention, Work Release, & Out of County Annual ADP:  
2004 - present**



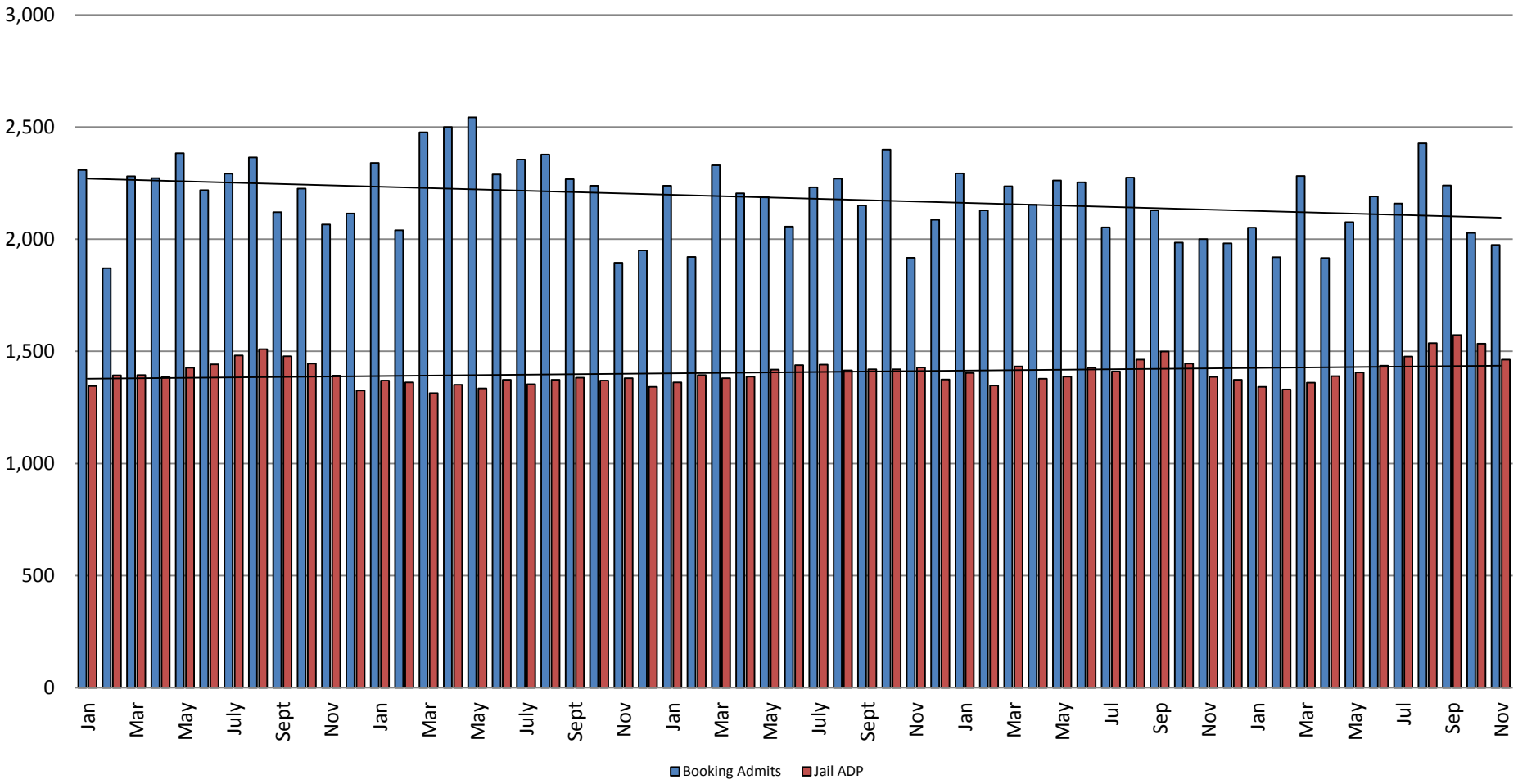
## TOTAL MONTHLY ADP: JAIL (Booking, Detention Facility, Work Release, & Out of County) 2007 - present



This slide shows total monthly ADP for individuals in booking, detention, work release and out-of county (combined)



# Booking Admits & Total Monthly ADP (Jail): 2013 - present

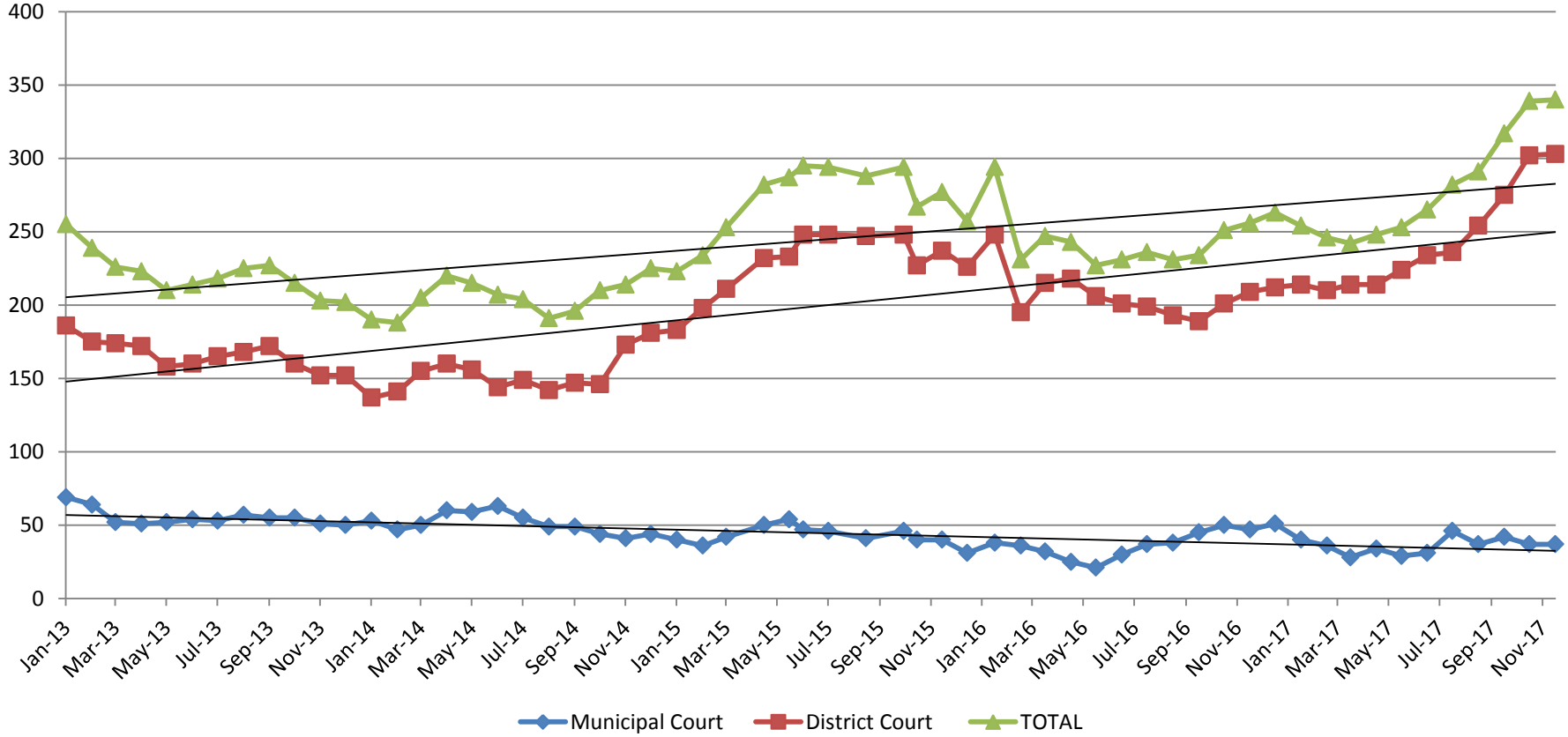


Jail includes individuals in booking, detention, work release and out-of county (combined)

(data obtained from detention facility)



# Pretrial Services Program (PSP) Monthly ADP: January 2013 - Present



<b>November</b>	<b>2013</b>	<b>2014</b>	<b>2015</b>	<b>2016</b>	<b>2017</b>
Municipal Court	51	41	40	47	37
District Court	152	173	237	209	303
<b>TOTAL</b>	<b>203</b>	<b>214</b>	<b>277</b>	<b>256</b>	<b>340</b>

<b>November YTD Avg.</b>	<b>2013</b>	<b>2014</b>	<b>2015</b>	<b>2016</b>	<b>2017</b>
Municipal Court	56	52	44	36	36
District Court	167	150	228	207	244
<b>TOTAL</b>	<b>223</b>	<b>204</b>	<b>272</b>	<b>244</b>	<b>280</b>

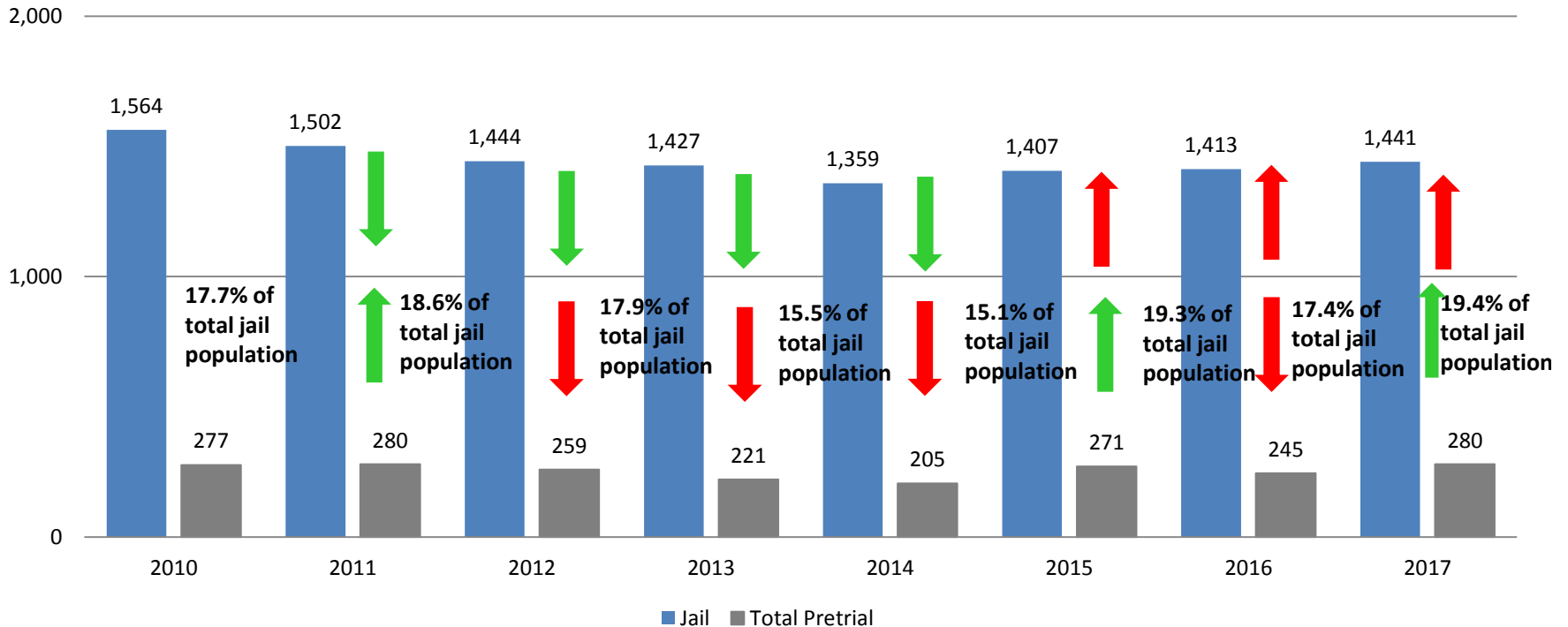


(data obtained from Pretrial Services)



# Correlation: Total & PSP

## Total Annual ADP: 2010 - Present

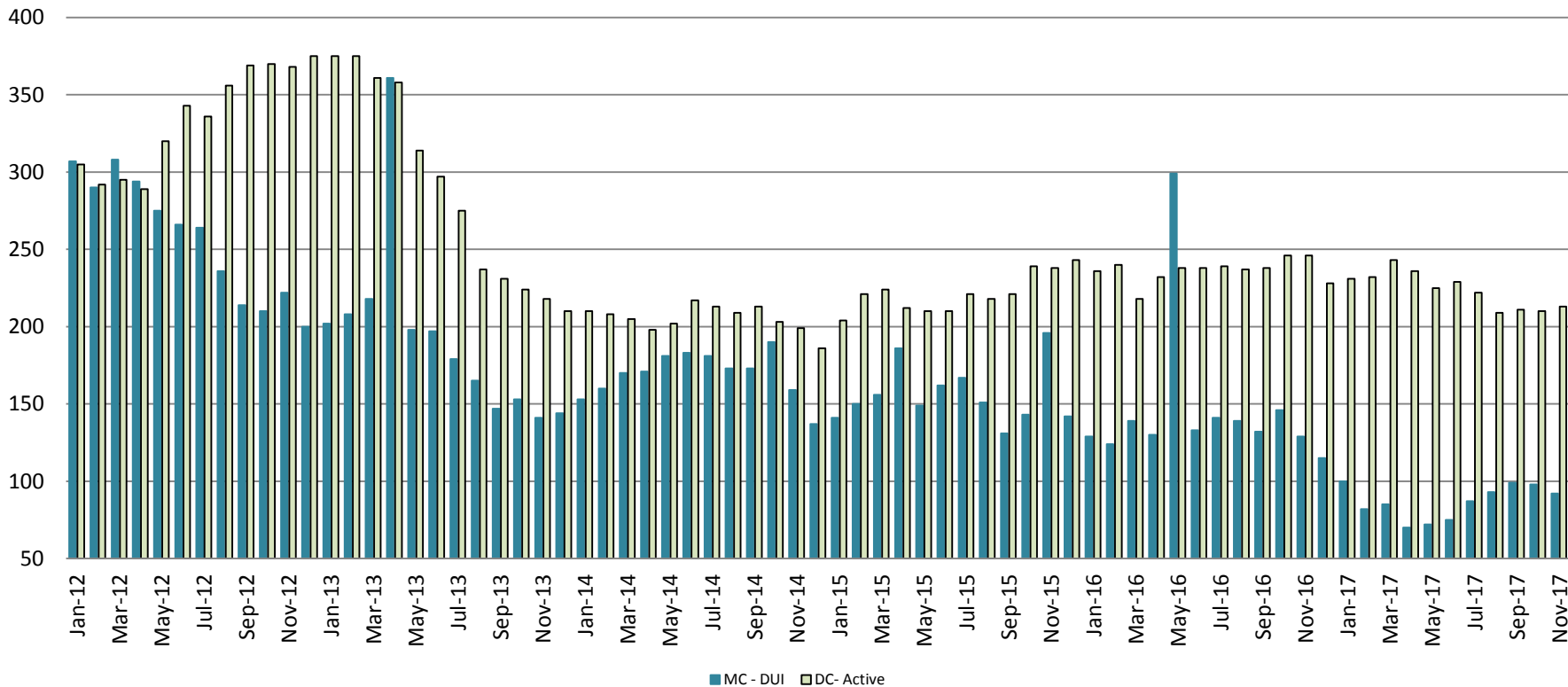


Arrows represent the overall increase/decrease of the population from year to year

Jail includes individuals in booking, detention, work release and out-of county (combined)



## Diversion - Active Caseload January 2012 - Present

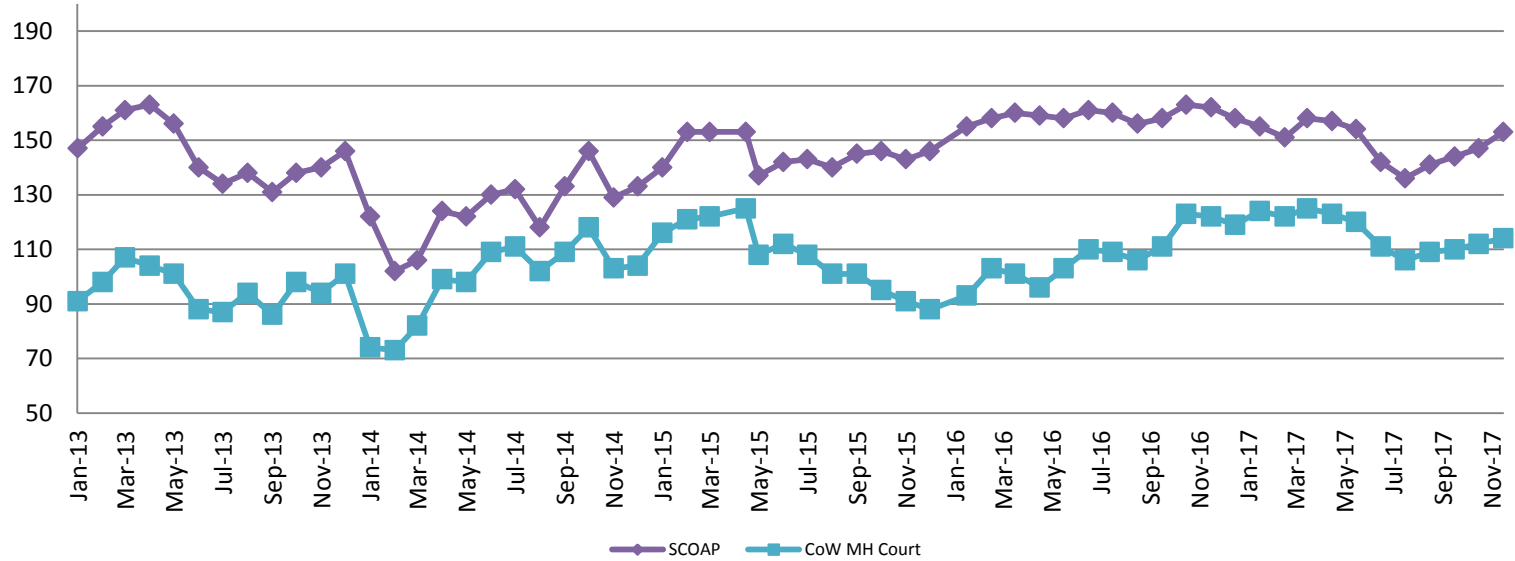


<b>November</b>	<b>2013</b>	<b>2014</b>	<b>2015</b>	<b>2016</b>	<b>2017</b>
Municipal Court- DUI	141	159	196	129	92
District Court- Active	218	199	238	246	213

<b>November YTD Avg.</b>	<b>2013</b>	<b>2014</b>	<b>2015</b>	<b>2016</b>	<b>2017</b>
Municipal Court	197	172	157	149	87
District Court	297	207	220	237	224



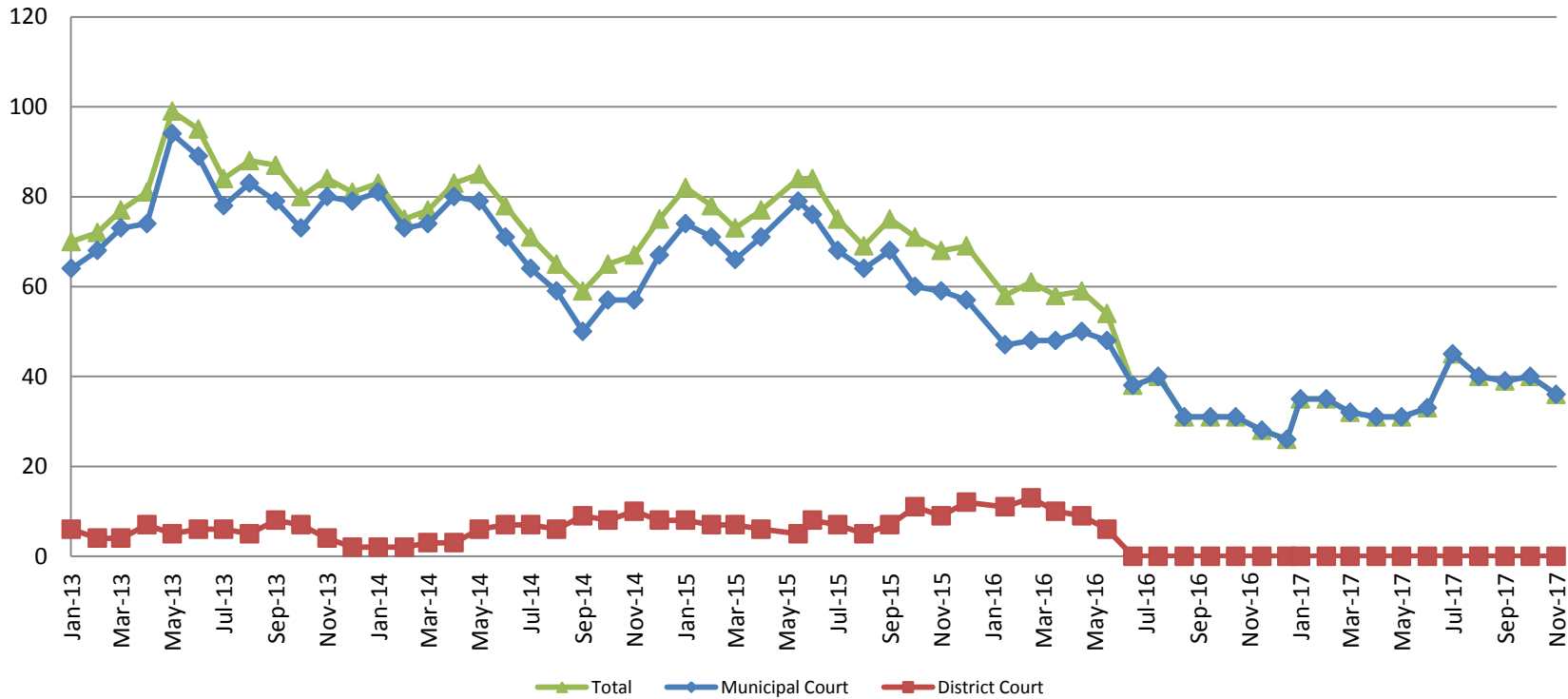
## Mental Health - ADP 2013 - present



<b>November:</b>	<b>2013</b>	<b>2014</b>	<b>2015</b>	<b>2016</b>	<b>2017</b>
SCOAP	140	129	143	162	153
CoW – MH Court	94	103	91	122	114
<b>November YTD Avg.</b>	<b>2013</b>	<b>2014</b>	<b>2015</b>	<b>2016</b>	<b>2017</b>
SCOAP	146	124	145	159	149
CoW – MH Court	95	98	109	107	116



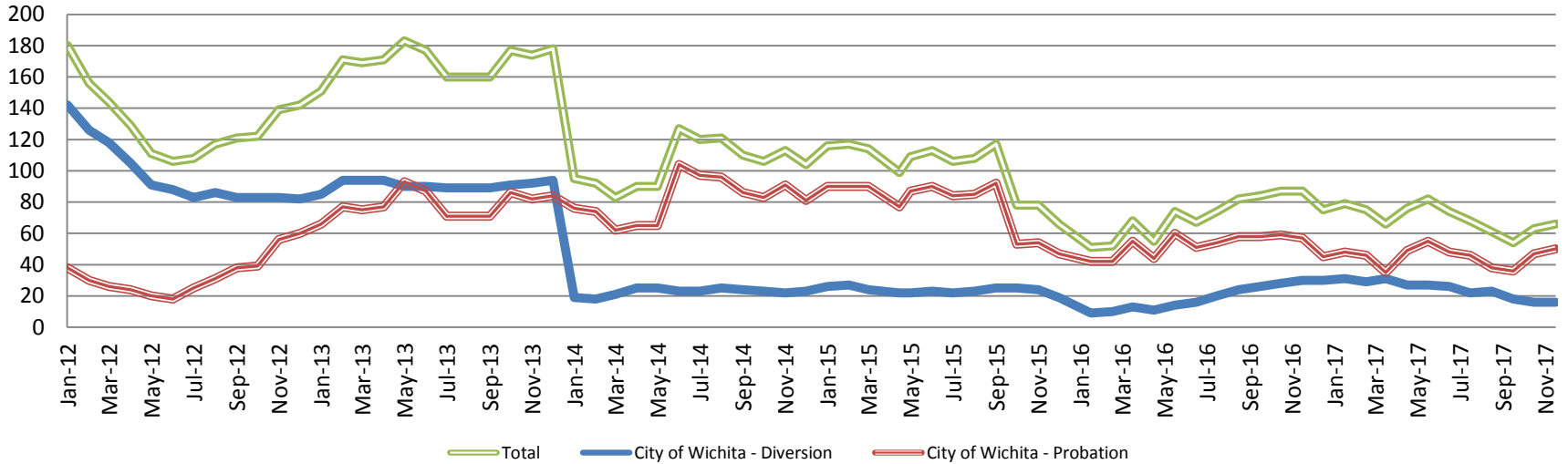
# Day Reporting - Active Caseload 2013-present



<b>November</b>	<b>2013</b>	<b>2014</b>	<b>2015</b>	<b>2016</b>	<b>2017</b>
Municipal Court	80	57	59	28	36
District Court	4	10	9	0*	0*
<b>TOTAL</b>	<b>84</b>	<b>67</b>	<b>68</b>	<b>28</b>	<b>36</b>
<b>November YTD Avg.</b>	<b>2013</b>	<b>2014</b>	<b>2015</b>	<b>2016</b>	<b>2017</b>
Municipal Court	78	68	69	28	36
District Court	6	6	7	0*	0*
<b>TOTAL</b>	<b>83</b>	<b>73</b>	<b>76</b>	<b>28</b>	<b>36</b>



## Drug Court - City of Wichita ADP: 2012 - present



**Nov. CoW Diversion**

2013 = 92  
 2014 = 22  
 2015 = 24  
 2016 = 30  
 2017 = 16

**Nov. YTD Avg.**

2013 = 91  
 2014 = 23  
 2015 = 24  
 2016 = 18  
 2017 = 24

**Nov. CoW Probation**

2013 = 82  
 2014 = 91  
 2015 = 54  
 2016 = 57  
 2017 = 50

**Nov. YTD Avg.**

2013 = 78  
 2014 = 82  
 2015 = 81  
 2016 = 53  
 2017 = 45

**Nov. CoW Total**

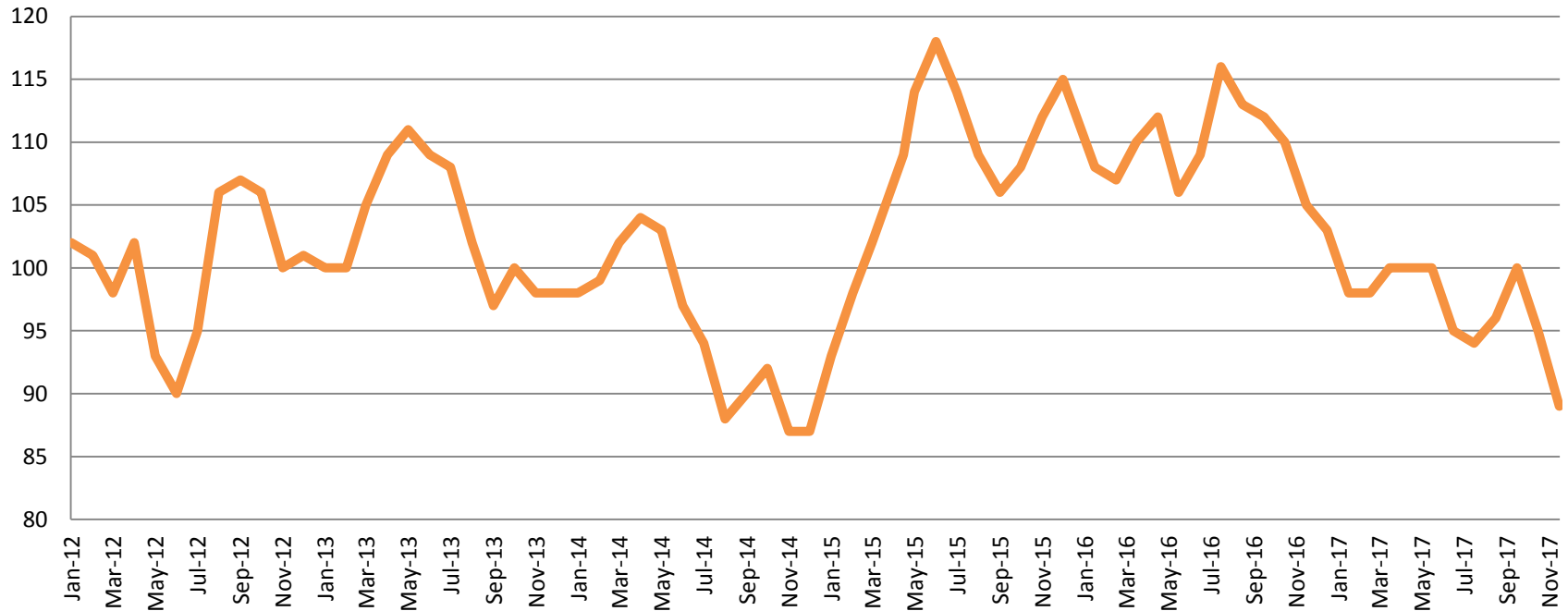
2013 = 174  
 2014 = 113  
 2015 = 78  
 2016 = 87  
 2017 = 66

**Nov. YTD Avg.**

2013 = 168  
 2014 = 104  
 2015 = 105  
 2016 = 71  
 2017 = 69



## Drug Court - Sedgwick County ADP: 2012 - present



### **November SG CO**

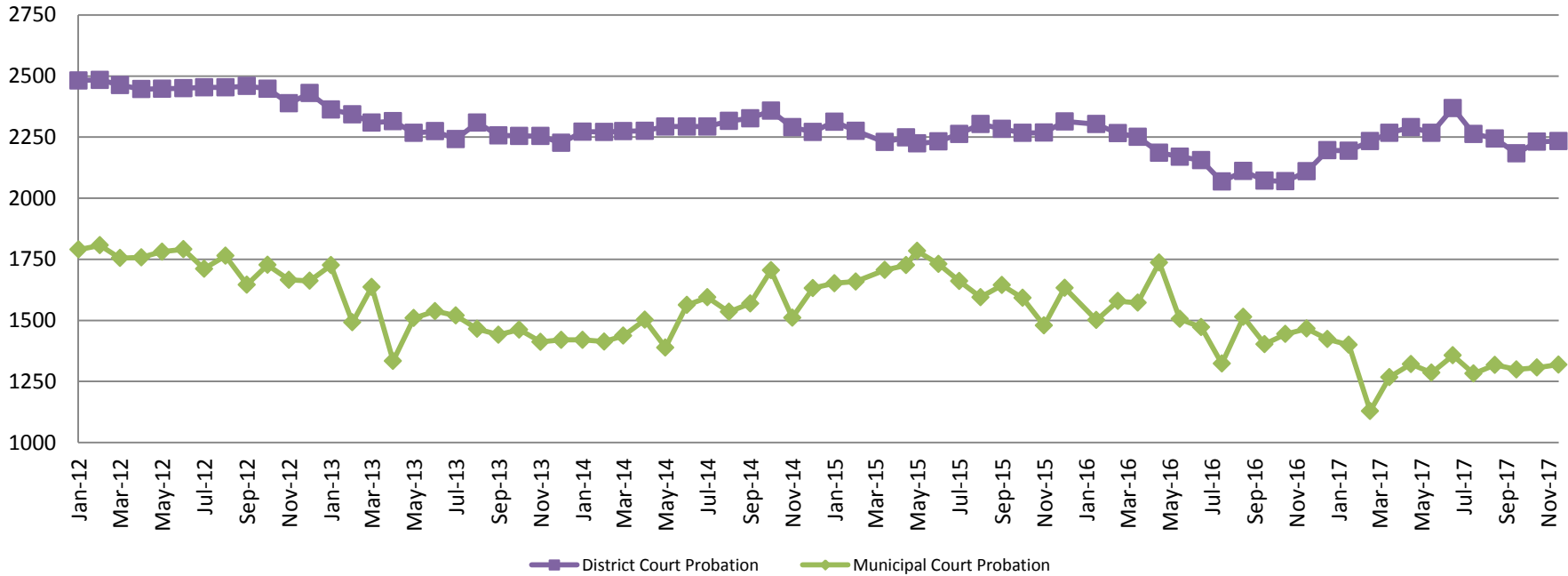
2013 = 98  
 2014 = 87  
 2015 = 112  
 2016 = 105  
 2017 = 89

### **November YTD Avg.**

2013 = 104  
 2014 = 96  
 2015 = 108  
 2016 = 110  
 2017 = 97

(data obtained from Pretrial Services)

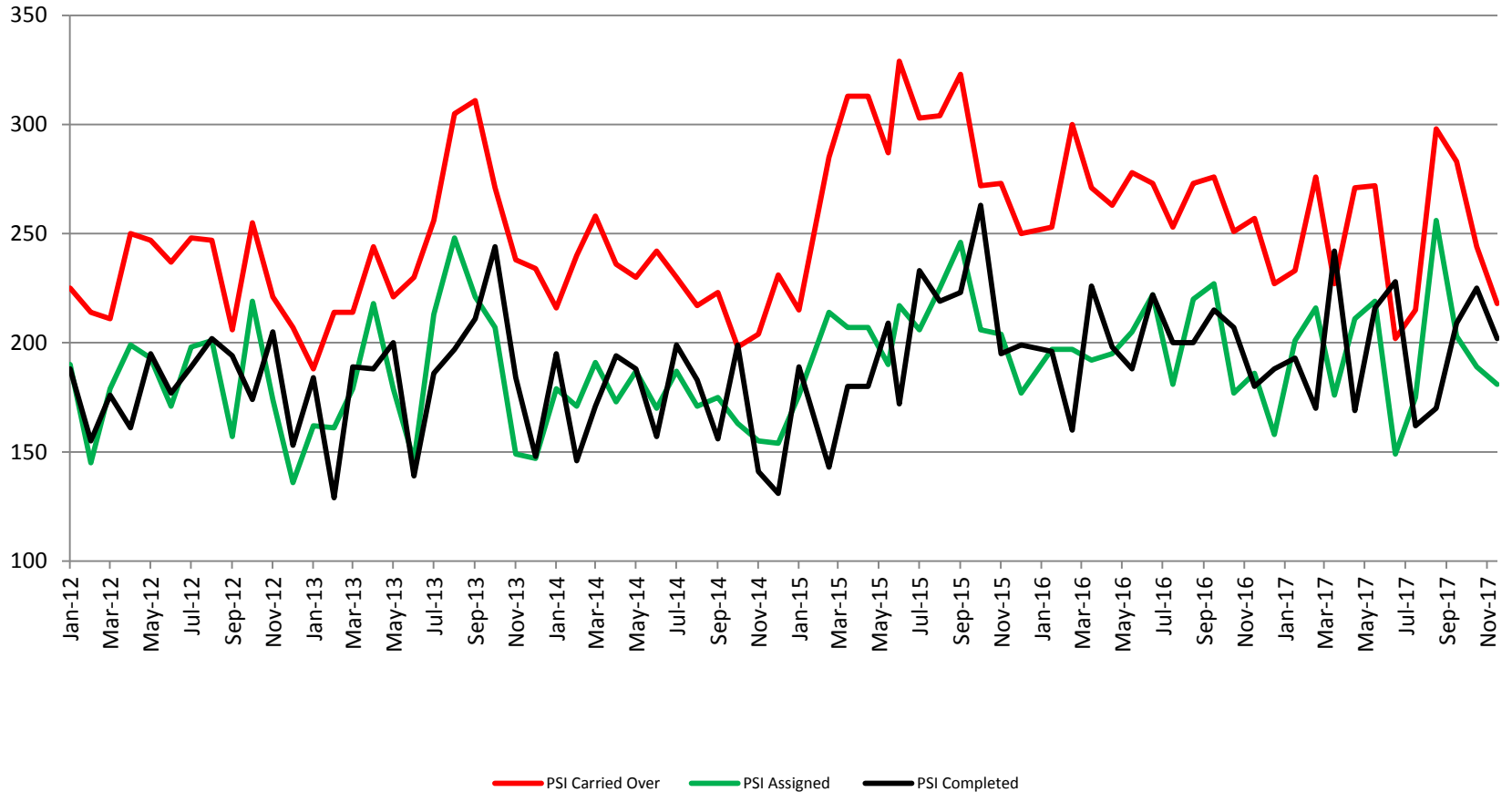
## Probation - Active Caseloads 2012 - present



<b>November</b>	<b>2013</b>	<b>2014</b>	<b>2015</b>	<b>2016</b>	<b>2017</b>
District Court	2,254	2,290	2,268	2,110	2,234
Municipal Court	1,412	1,511	1,479	1,466	1,319
<b>November YTD Avg.</b>	<b>2013</b>	<b>2014</b>	<b>2015</b>	<b>2016</b>	<b>2017</b>
District Court	2,290	2,297	2,264	2,160	2,252
Municipal Court	1,503	1,513	1,657	1,502	1,299



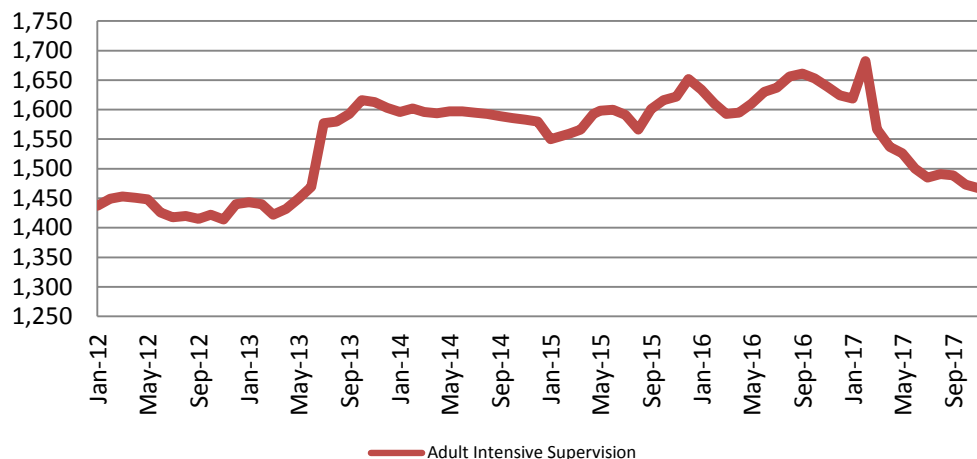
## District Court Probation: Pre-Sentence Investigation 2012 - present





# Community Corrections

## Adult Intensive Supervision Probation (AISP) ADP 2012 - present



### November

2013 = 1,613  
2014 = 1,583  
2015 = 1,622  
2016 = 1,639  
2017 = 1,467

### November YTD Avg.

2013 = 1,512  
2014 = 1,593  
2015 = 1,587  
2016 = 1,629  
2017 = 1,531

(data obtained from SG CO Dept. of Corrections)

\*KDOC changed population count to include drug court, residential and AISP beginning July 2013.

## Adult Residential: ADP 2012 - present

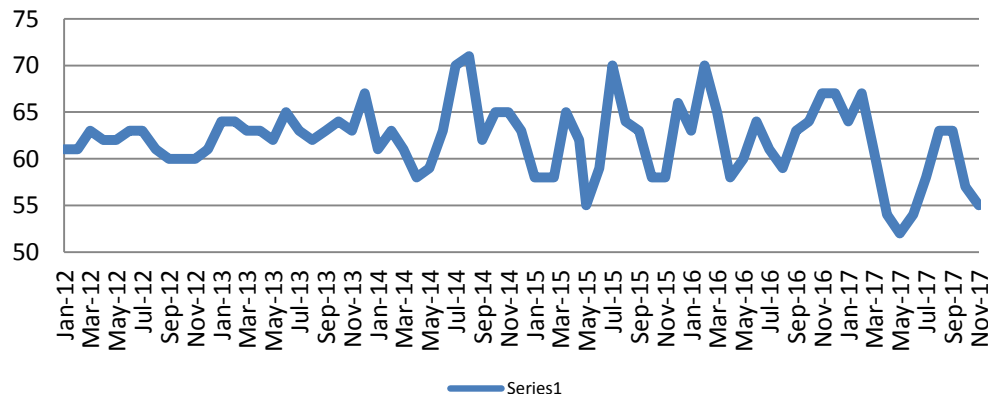
### November

2013 = 63  
2014 = 65  
2015 = 58  
2016 = 67  
2017 = 55

### November YTD Avg.

2013 = 63  
2014 = 63  
2015 = 61  
2016 = 63  
2017 = 59

(data obtained from SG CO Dept. of Corrections)

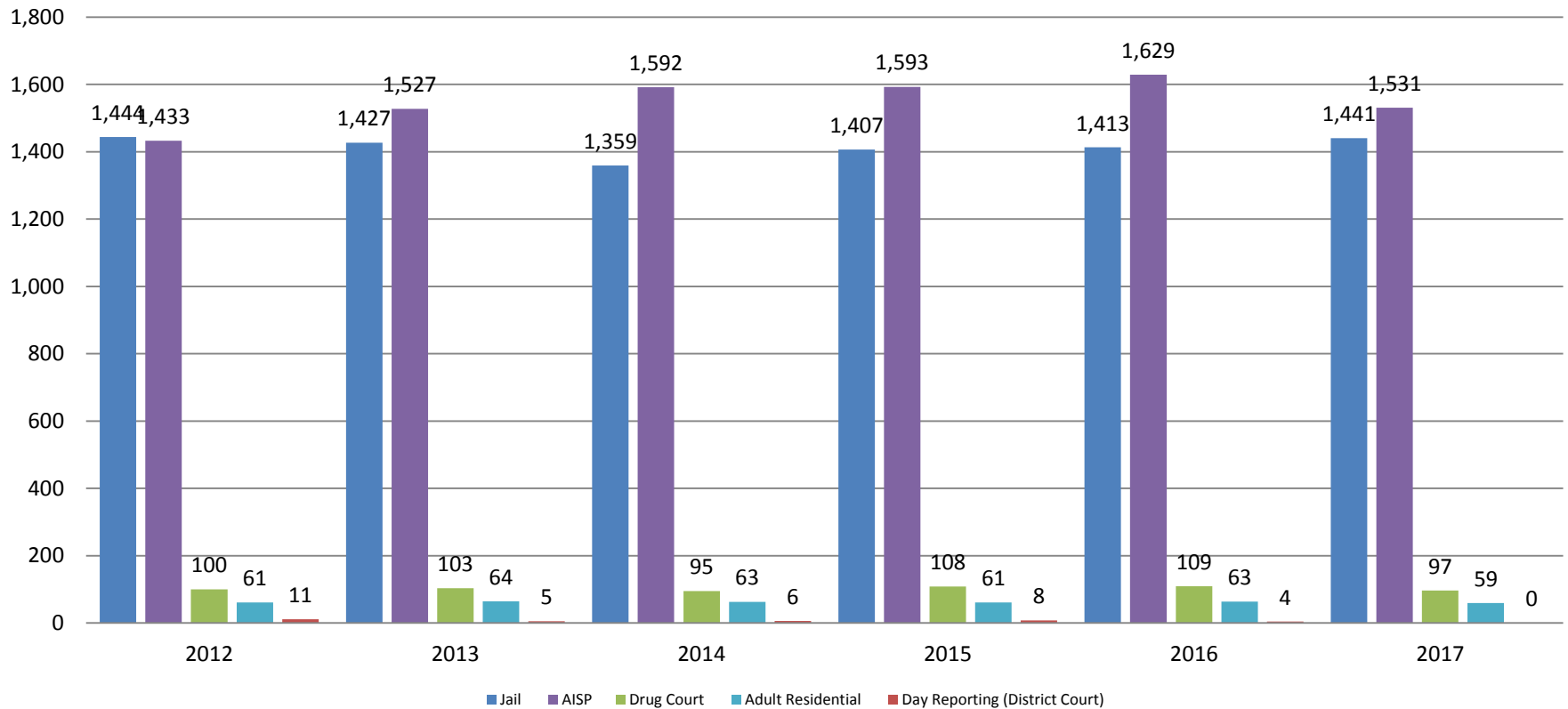


Series1



# Correlation: Total & Sedgwick County Programs (Adult)

## Total Annual ADP: 2012 - Present

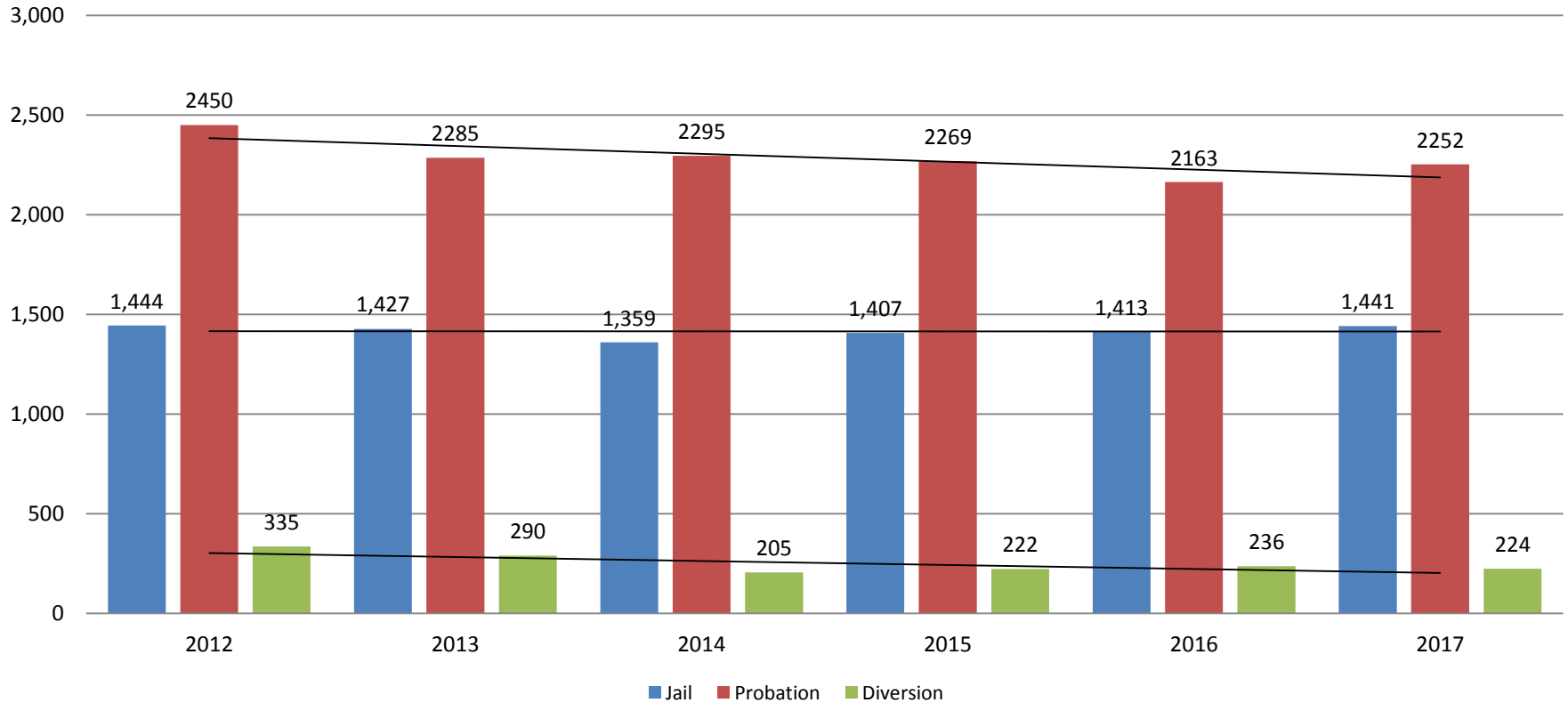


Jail includes individuals in booking, detention, work release and out-of county (combined)

(data obtained from detention facility, SG Dept. of Corrections, Pretrial Services, & CoW)

# Correlation: Total & District Court Programs

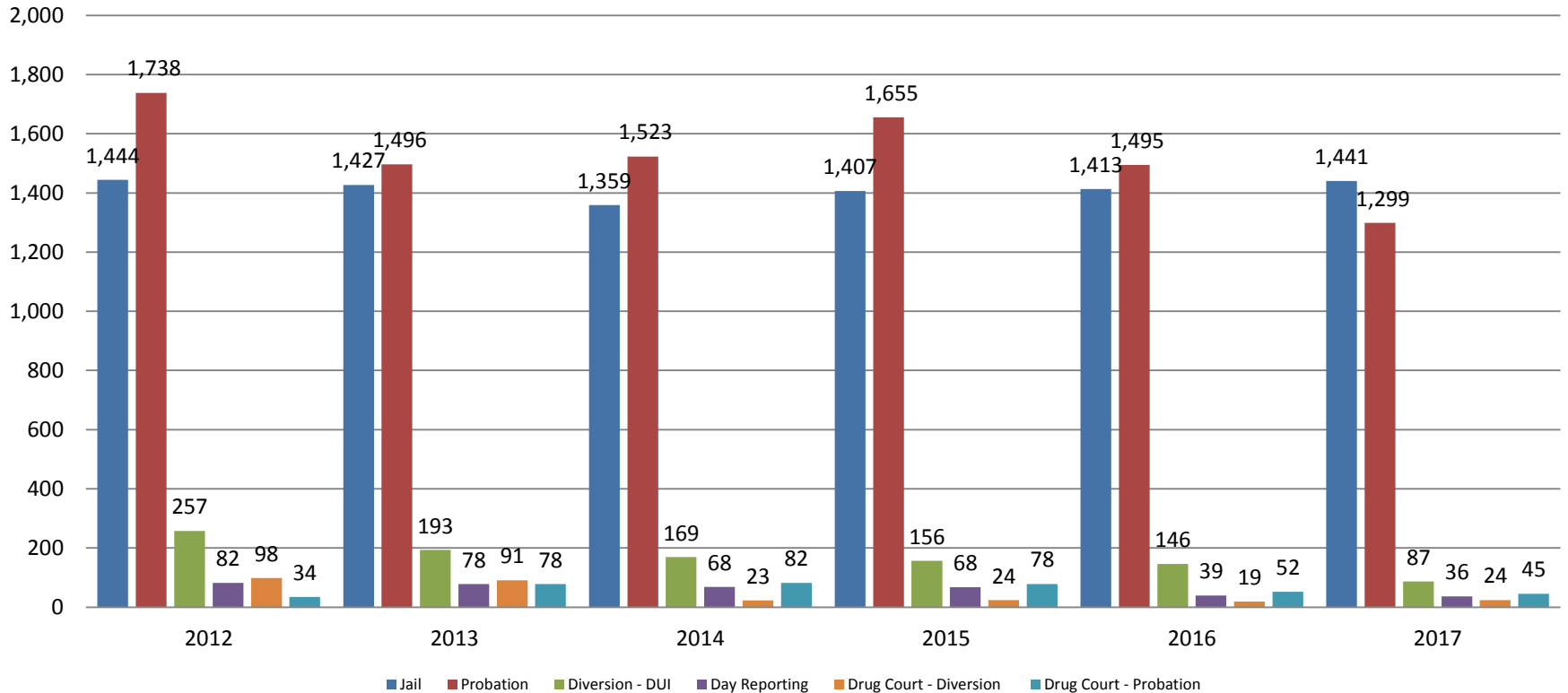
## Total Annual ADP: 2012 - Present



Jail includes individuals in booking, detention, work release and out-of county (combined)

# Correlation: Total & City of Wichita / Municipal Court Programs

## Total Annual ADP: 2012 - present

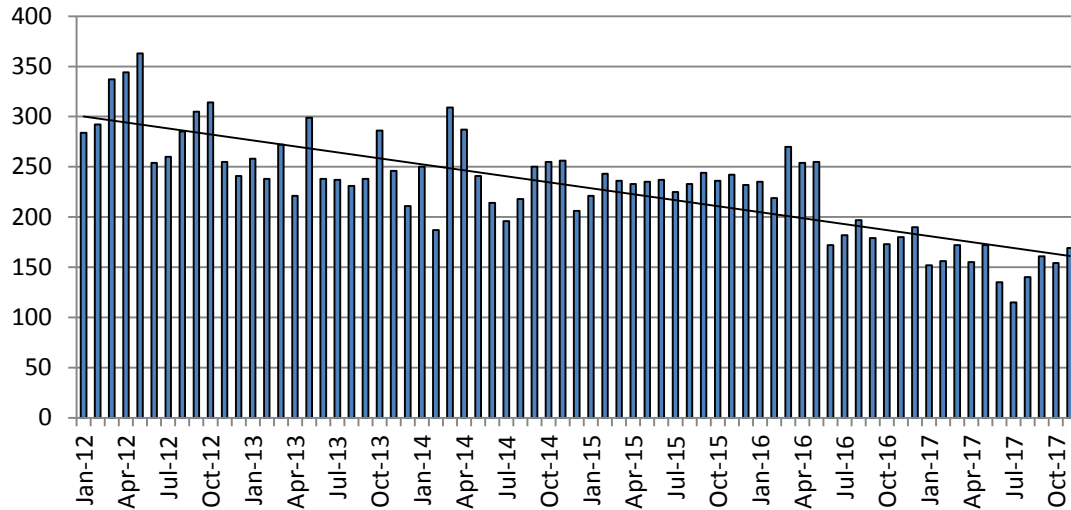


Jail includes individuals in booking, detention, work release and out-of county (combined)



# Juvenile

## JIAC Intakes: 2012 - present



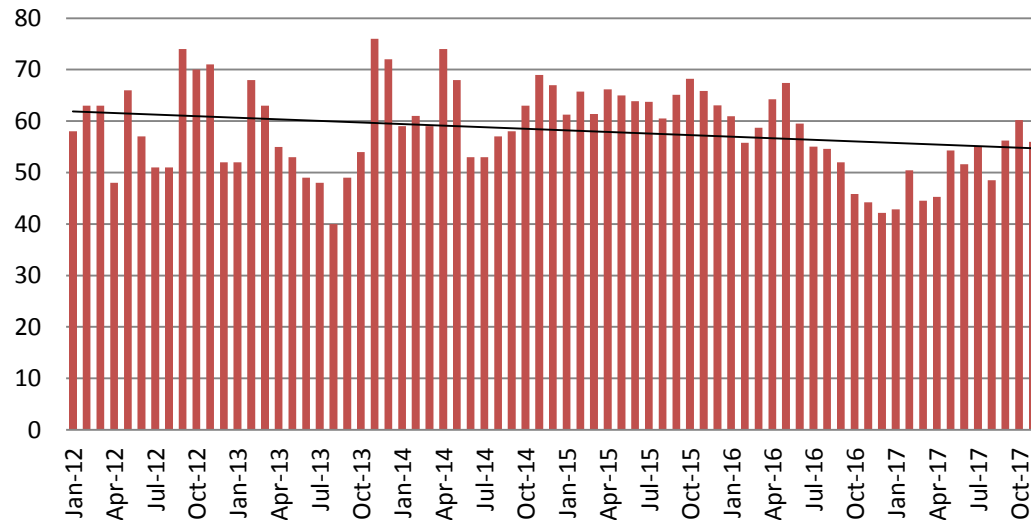
<u>Nov.</u>	<u>Nov. YTD Average</u>
2013 = 246	2013 = 251
2014 = 256	2014 = 242
2015 = 242	2015 = 235
2016 = 180	2016 = 211
2017 = 169	2017 = 153

(data obtained from SG CO Dept. of Corrections)

<u>Nov.</u>	<u>Nov. YTD Avg.</u>
2013 = 76	2013 = 55
2014 = 69	2014 = 61
2015 = 66	2015 = 64
2016 = 44	2016 = 56
2017 = 56	2017 = 51

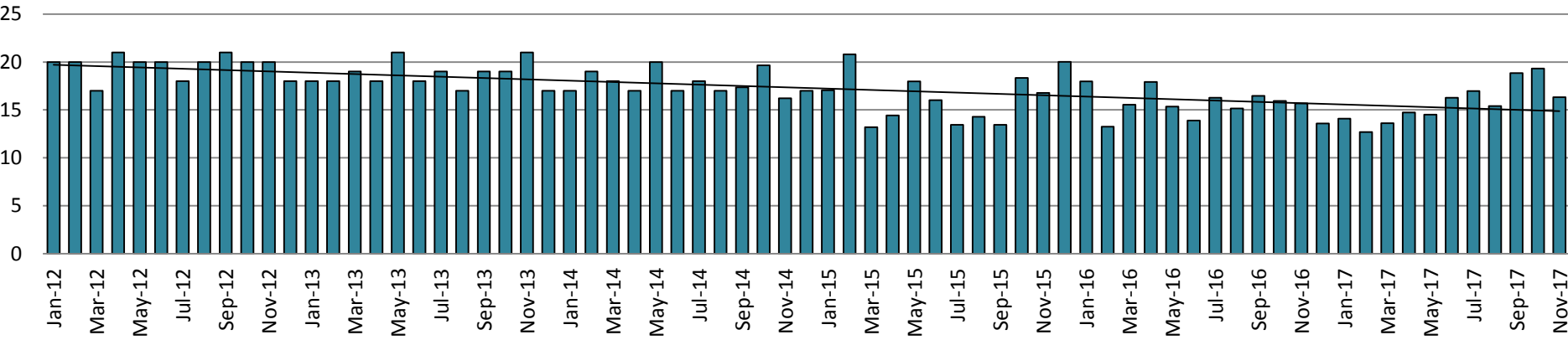
(data obtained from SG CO Dept. of Corrections)

## JDF ADP: 2012 - present

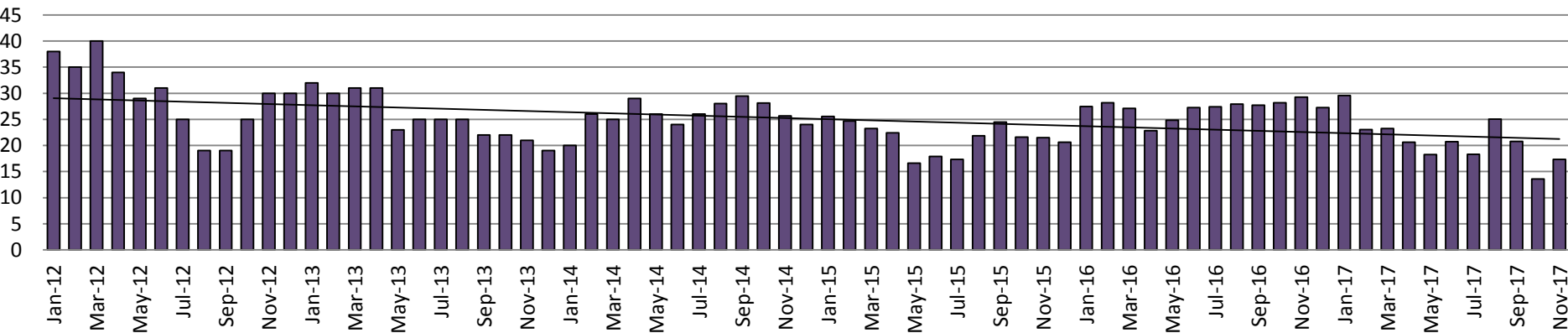


# Juvenile Detention Alternatives

**Juvenile Residential Facility (JRF)  
ADP: 2012 - present**

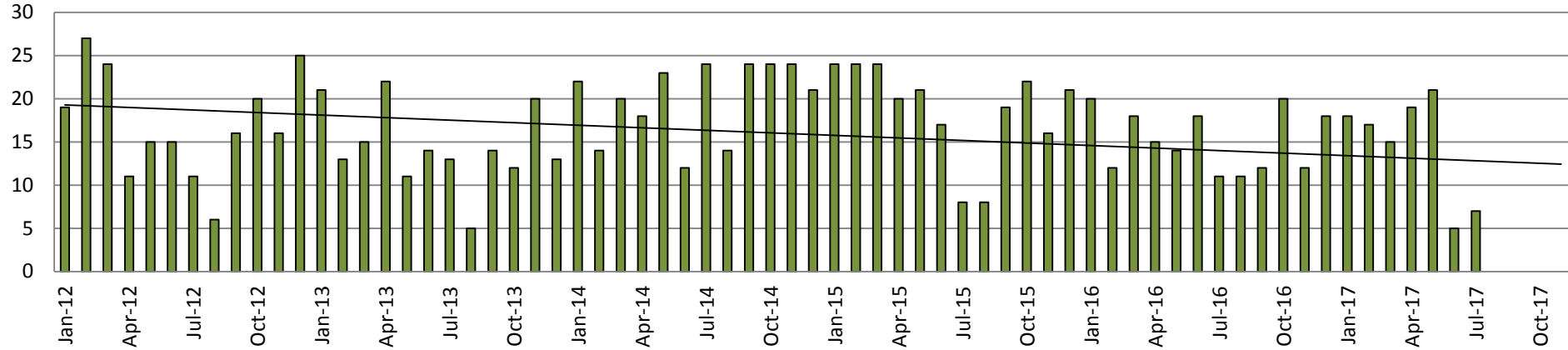


**Home-Based Supervision  
ADP: 2012 - present**

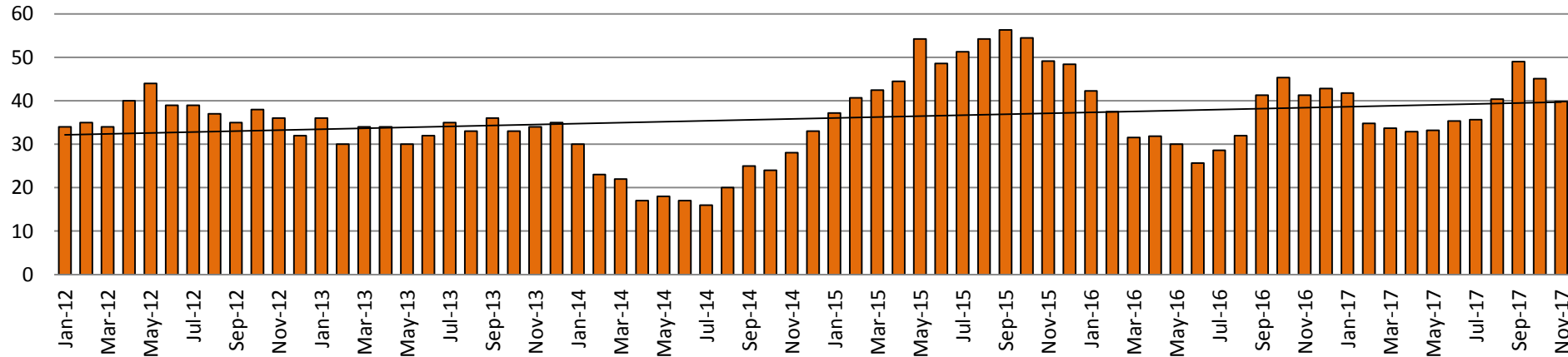


# Juvenile Detention Alternatives

## Weekend Alternative Detention Program 2012 - present



## Detention Advocacy Case Management Services ADP: 2012 - present



# Juvenile Detention Services

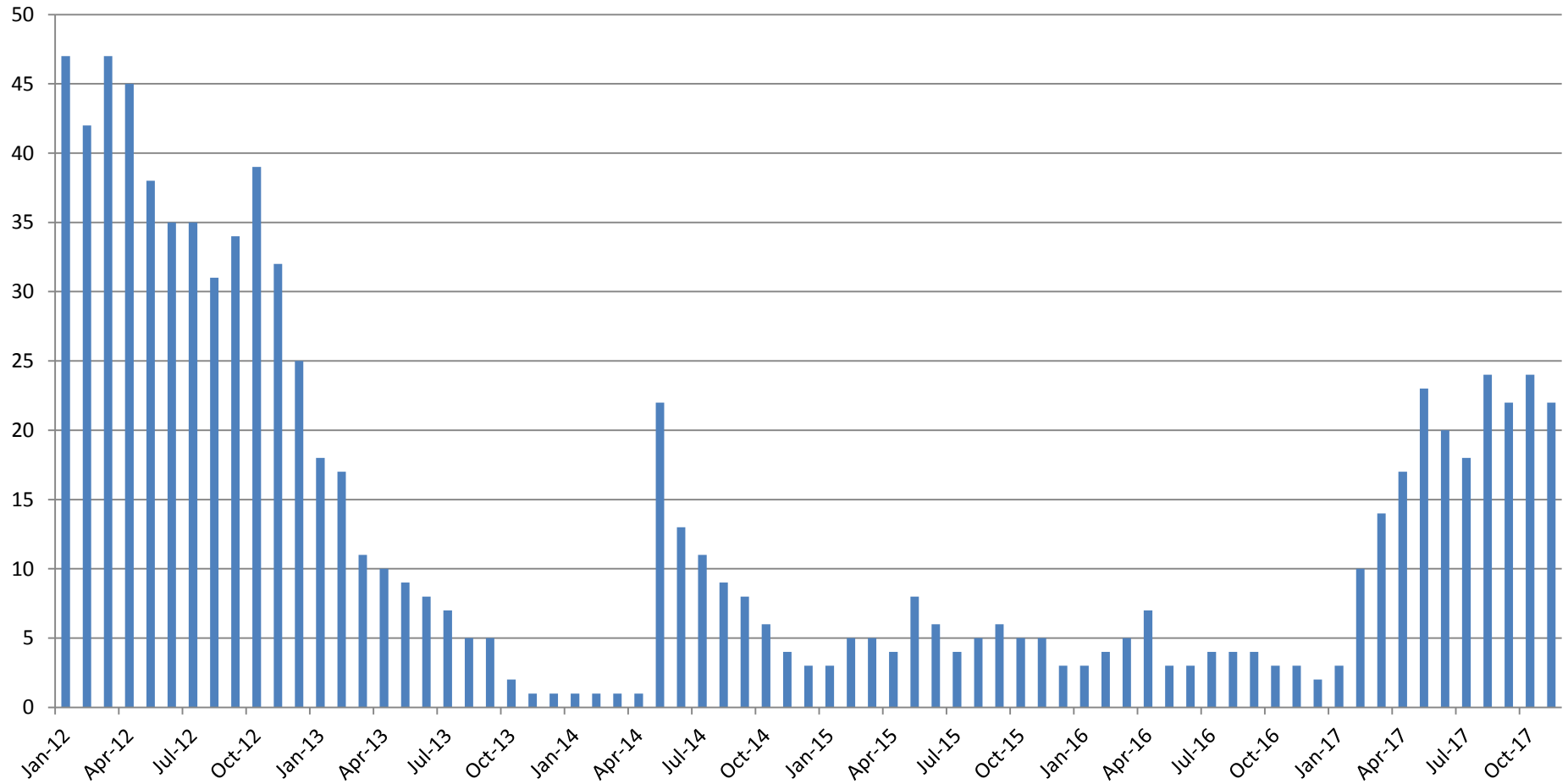
<b>November ADP</b>	<b>2014</b>	<b>2015</b>	<b>2016</b>	<b>2017</b>
Juvenile Detention Facility	69	66	44	56
Juvenile Residential Facility	16	17	16	16
Home Based Supervision	26	21	29	17
Detention Advocacy Case Management Services	28	49	41	40
Weekend Alternative Detention Program (total)	24	16	12	0

<b>November YTD AVERAGE</b>	<b>2014</b>	<b>2015</b>	<b>2016</b>	<b>2017</b>
Juvenile Detention Facility	61	64	56	51
Juvenile Residential Facility	18	16	16	16
Home Based Supervision	26	22	27	21
Detention Advocacy Case Management Services	22	48	35	38
Weekend Alternative Detention Program	20	18	15	9



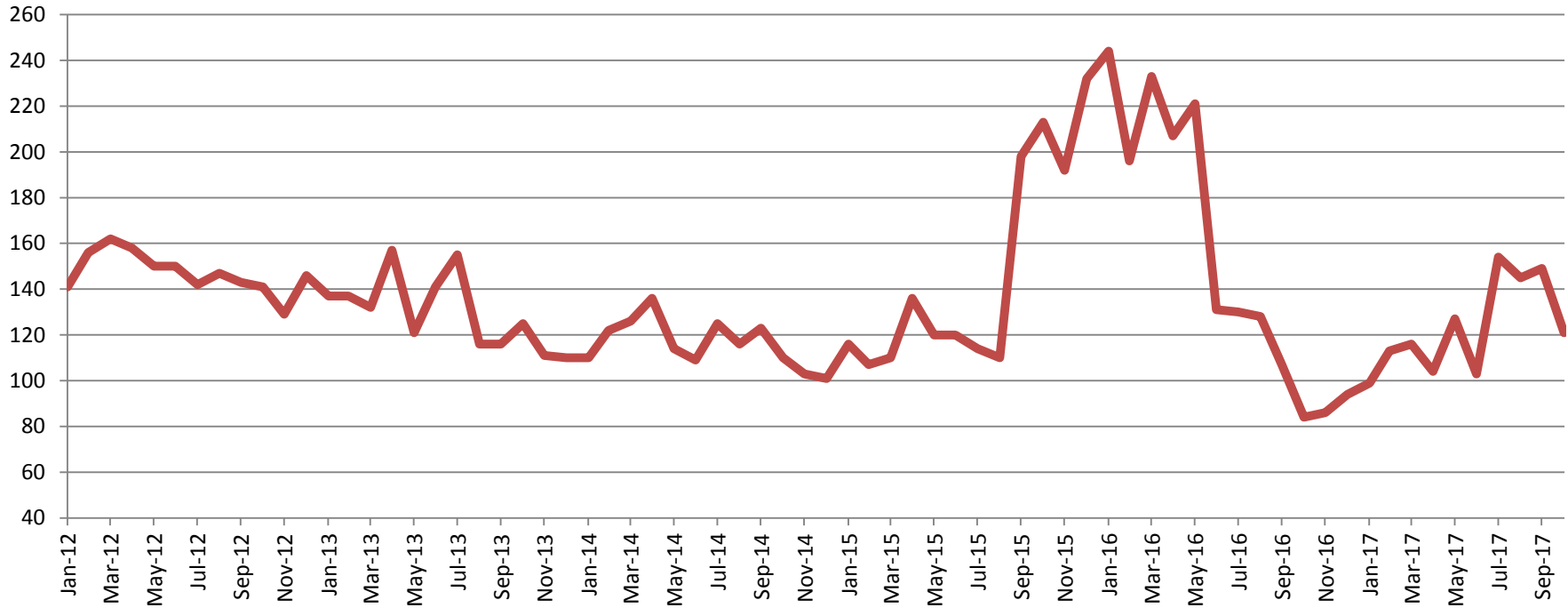
# Monthly Jail Snapshot: October 31, 2017

## BICE Holds 2012-Present



# Monthly Jail Snapshot: November 30, 2017

## Felony Commitments: February 2012 - present

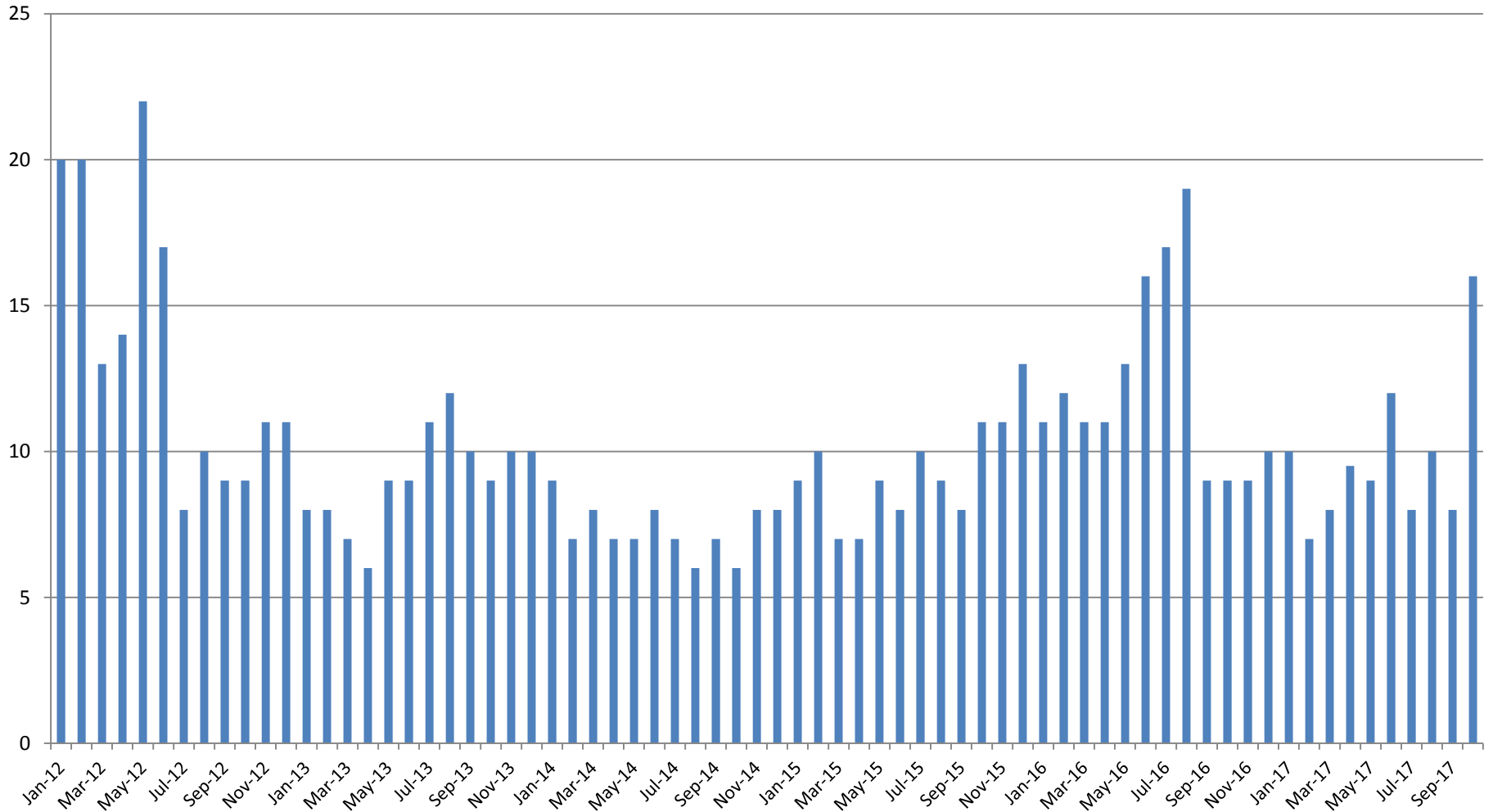


### November:

2012 = 141	2015 = 213
2013 = 125	2016 = 84
2014 = 110	2017 = 121

(data obtained from SG CO DIO)

# Journal Entry Completion (Average Days) January 2013-Present



This data is always reported a month behind

