

Criminal Justice Coordinating Council

Population Report & Program Trends

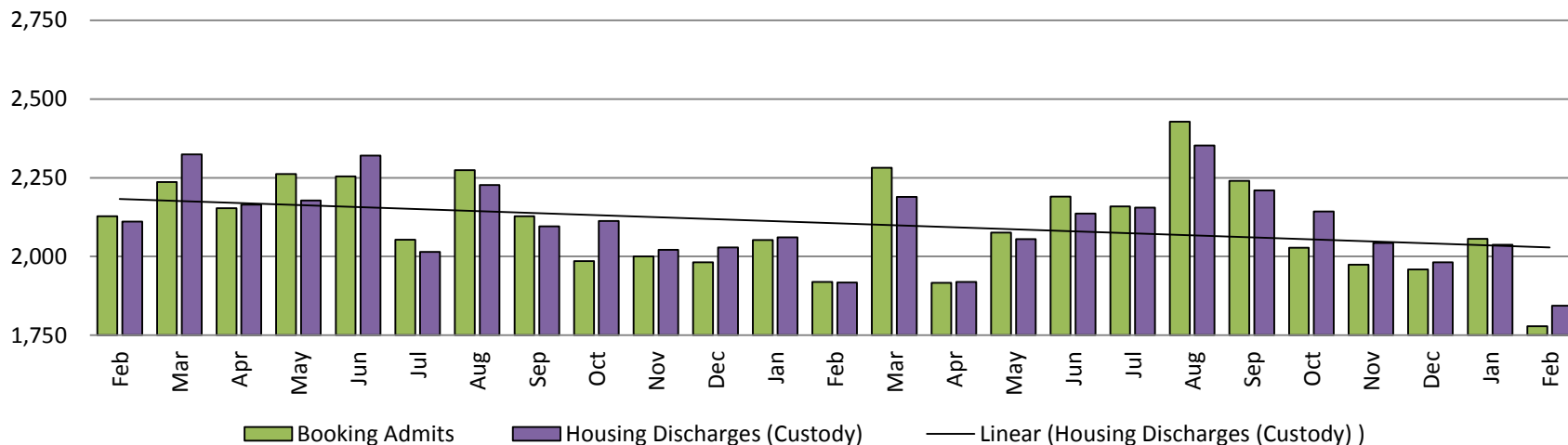
March 2018



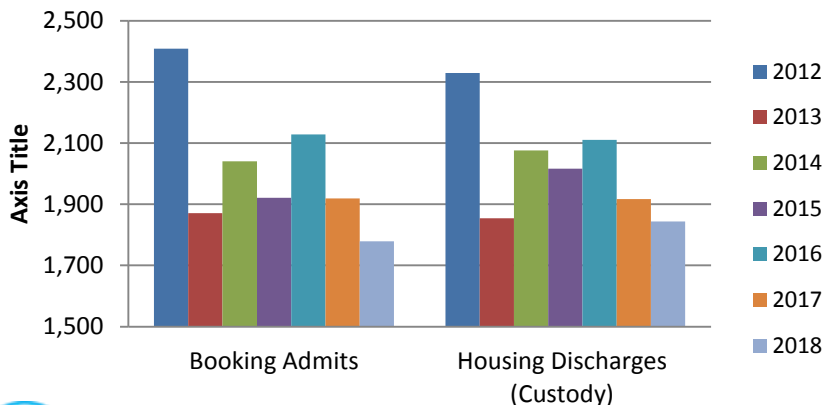
Sedgwick County...
working for you

Detention Facility

Booking Admits & Housing Discharges from Custody February 2016-Present



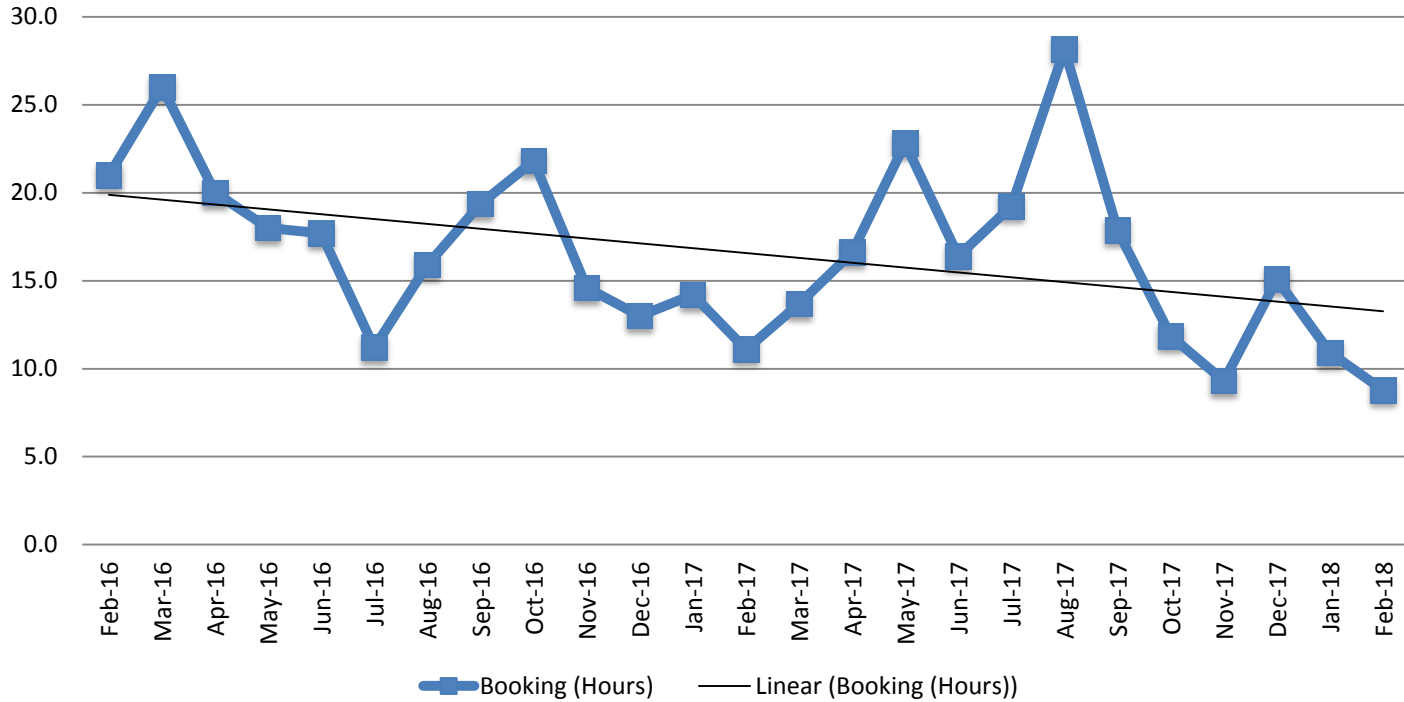
Bookings Year over Year: Month of February



Bookings February	Housing Discharges February
2016: 2,128	2016: 2,111
2017: 1,919	2017: 1,917
2018: 1,779	2018: 1,844

(data obtained from detention facility)

Average Length of Stay: Booking (Hours) February 2016 - Present

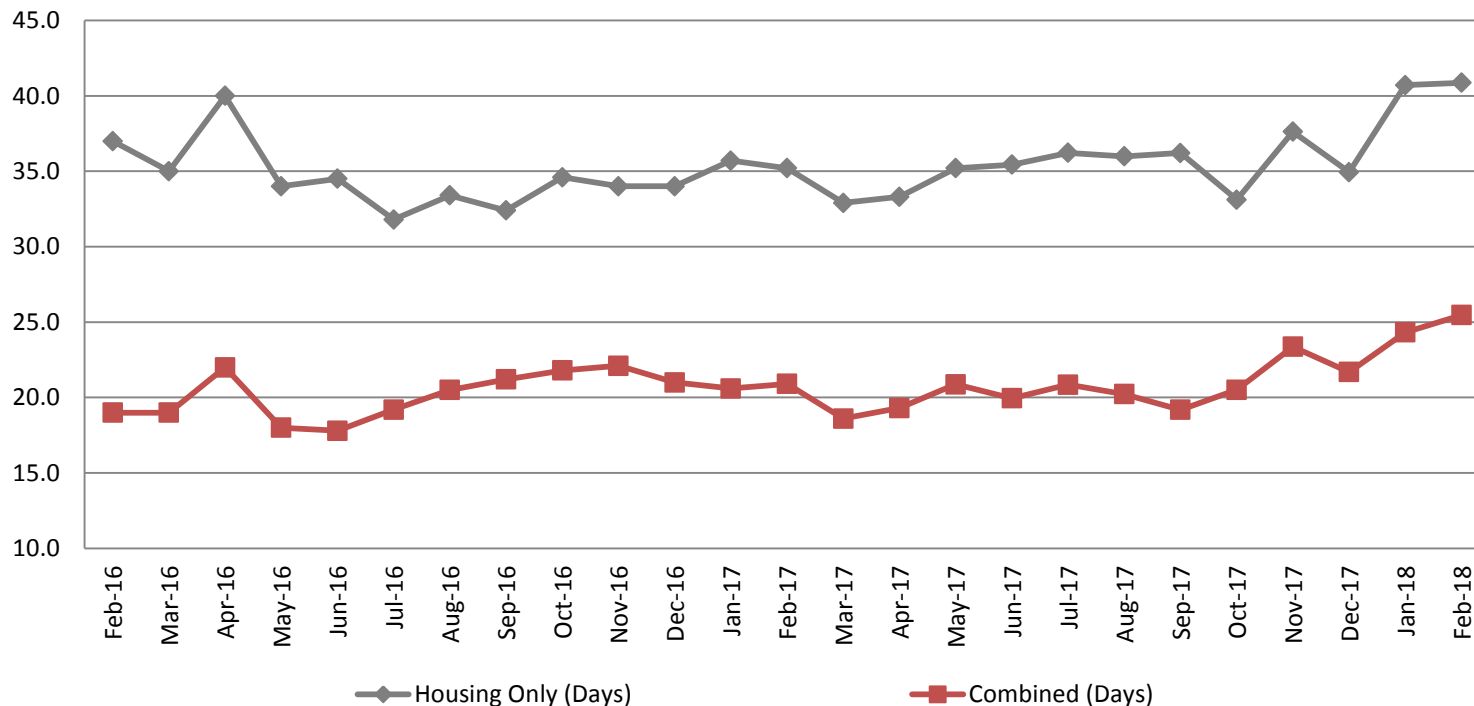


February	February YTD Average
2016: 21.0	2016: 20.5
2017: 11.1	2017: 12.7
2018: 8.8	2018: 9.8



Average Length of Stay: Housing & Combined (Days)

February 2016 - Present

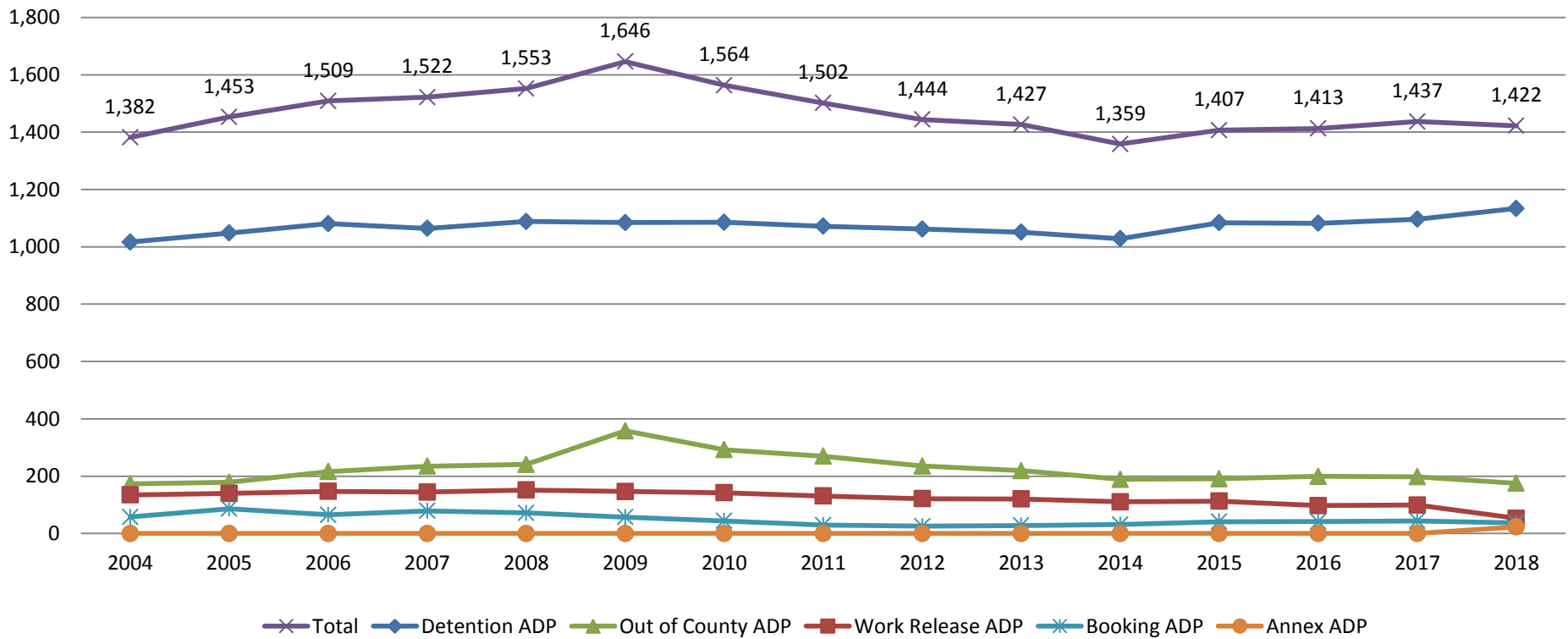


Month, Year	Housing Only	Housing YTD AVG	Combined Days	Combined YTD AVG
February 2016	37.0	37.0	19.0	18.5
February 2017	35.2	35.5	20.9	20.8
February 2018	40.9	40.8	25.5	24.9



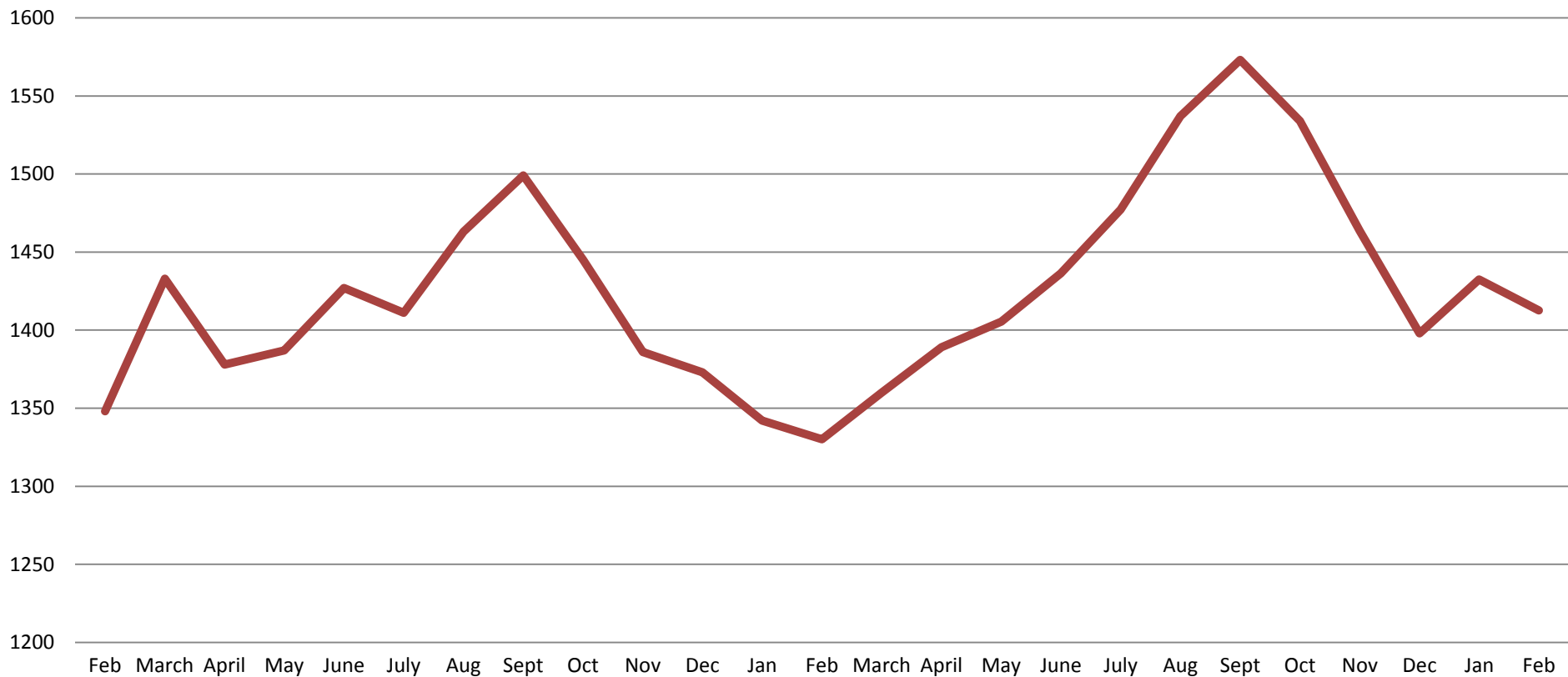
Jail: Annual Average Daily Population (ADP)

TRENDS: Booking, Detention, Work Release, & Out of County Annual ADP: 2004 - present



*Beginning January 2018, Work Release program began transfer to Division of Corrections

TOTAL MONTHLY ADP: JAIL (Booking, Detention Facility, Work Release, & Out of County) February 2016 - present

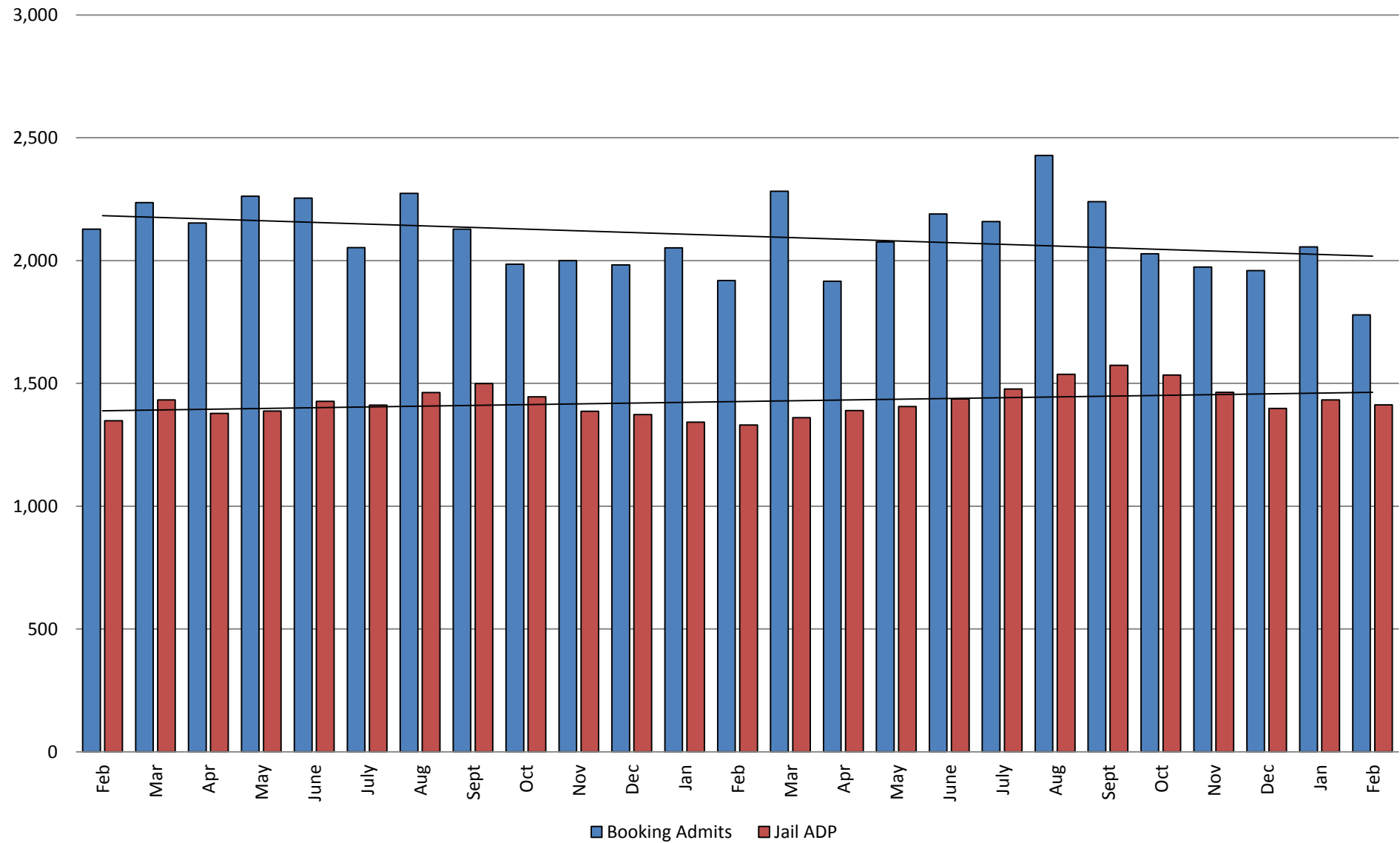


Feb 2016	Feb 2017	Feb 2018
1,348	1,330	1,413

*Beginning January 2018, Work Release program began transfer to Division of Corrections

This slide shows total monthly ADP for individuals in booking, detention, work release and out-of county (combined)
(data obtained from detention facility)

Booking Admits & Total Monthly ADP (Jail): February 2016 - present

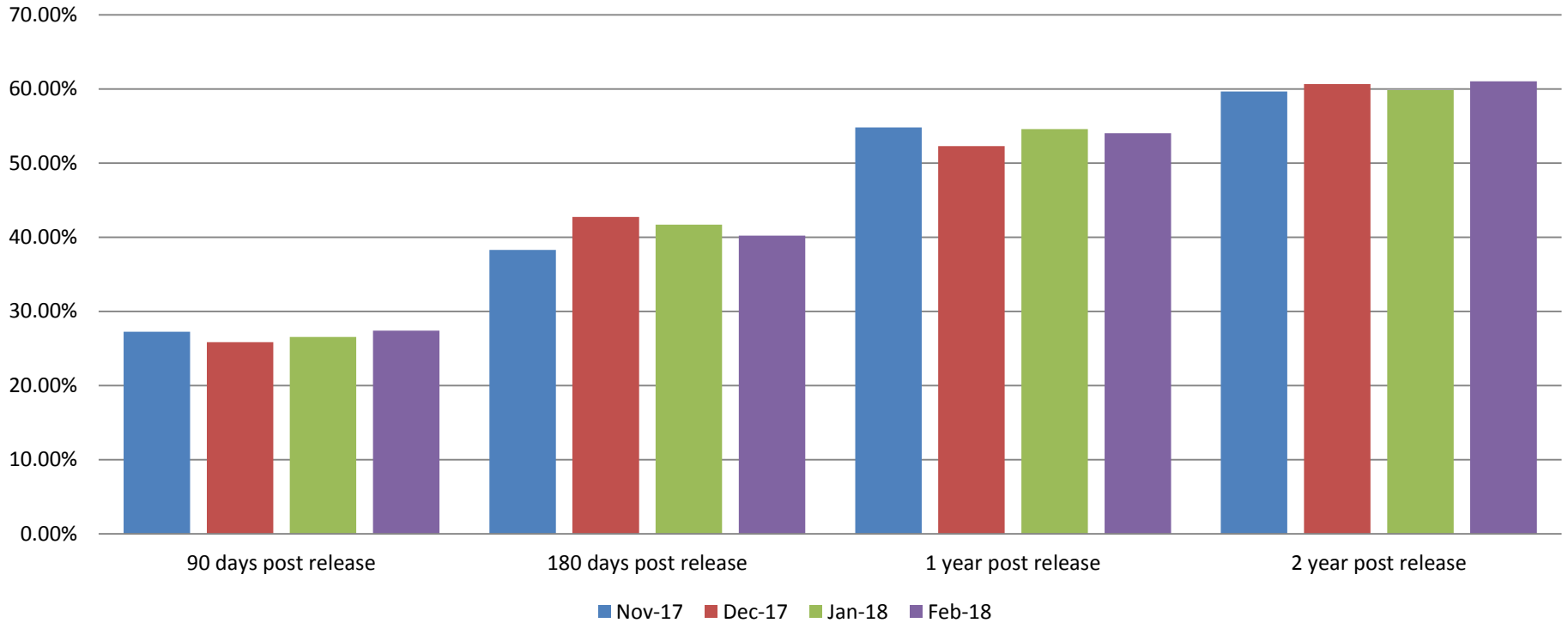


Jail includes individuals in booking, detention, work release and out-of county (combined)

(data obtained from detention facility)



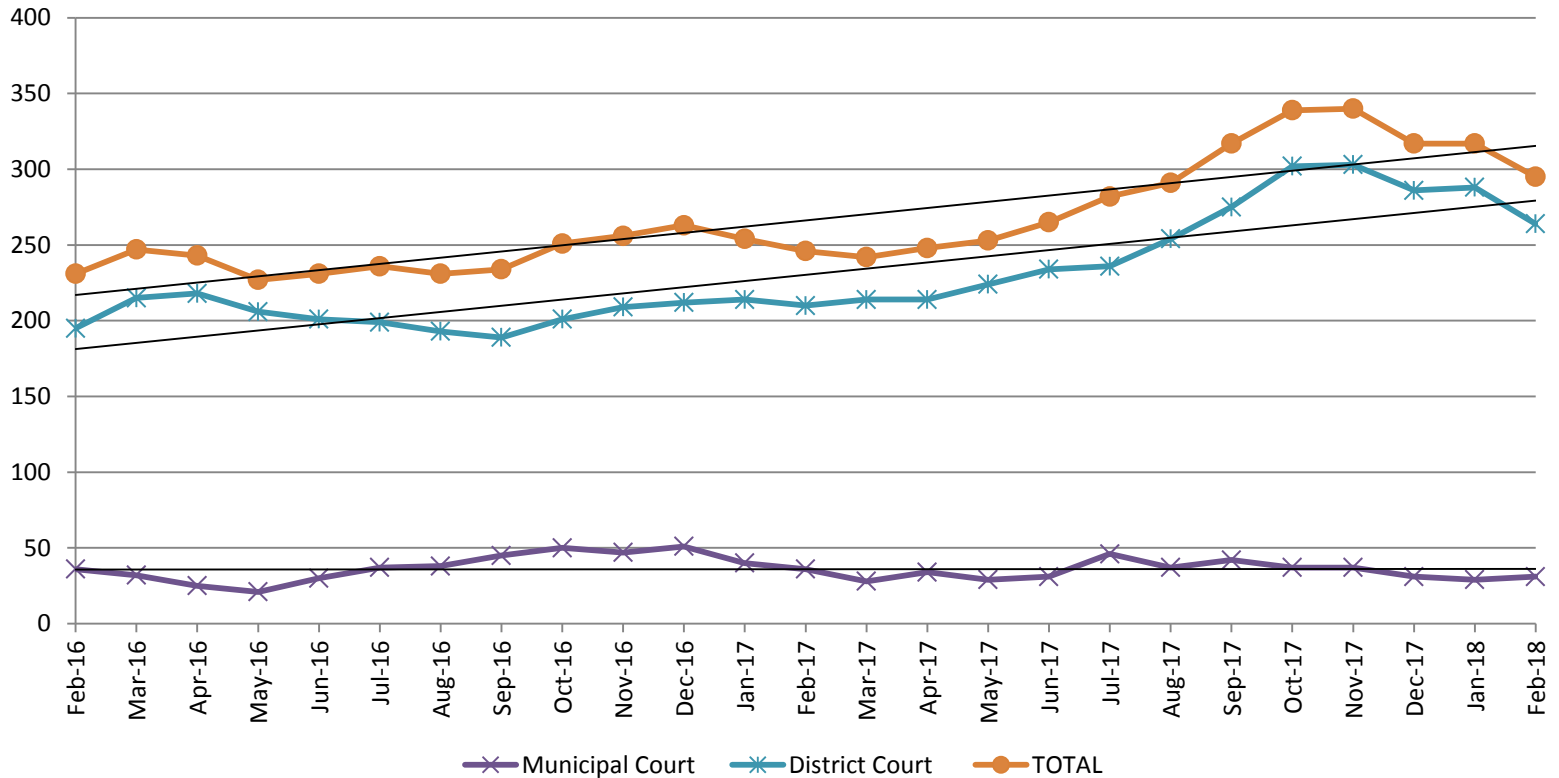
Percent of released inmates rearrested



Month, Year	90 Days	180 Days	1 Year	2 Years
Nov 2017	27.25%	38.27%	54.81%	59.64%
Dec 2017	25.85%	42.72%	52.28%	60.64%
Jan 2018	26.55%	41.67%	54.57%	59.84%
Feb 2018	27.39%	40.22%	54.02%	61.03%



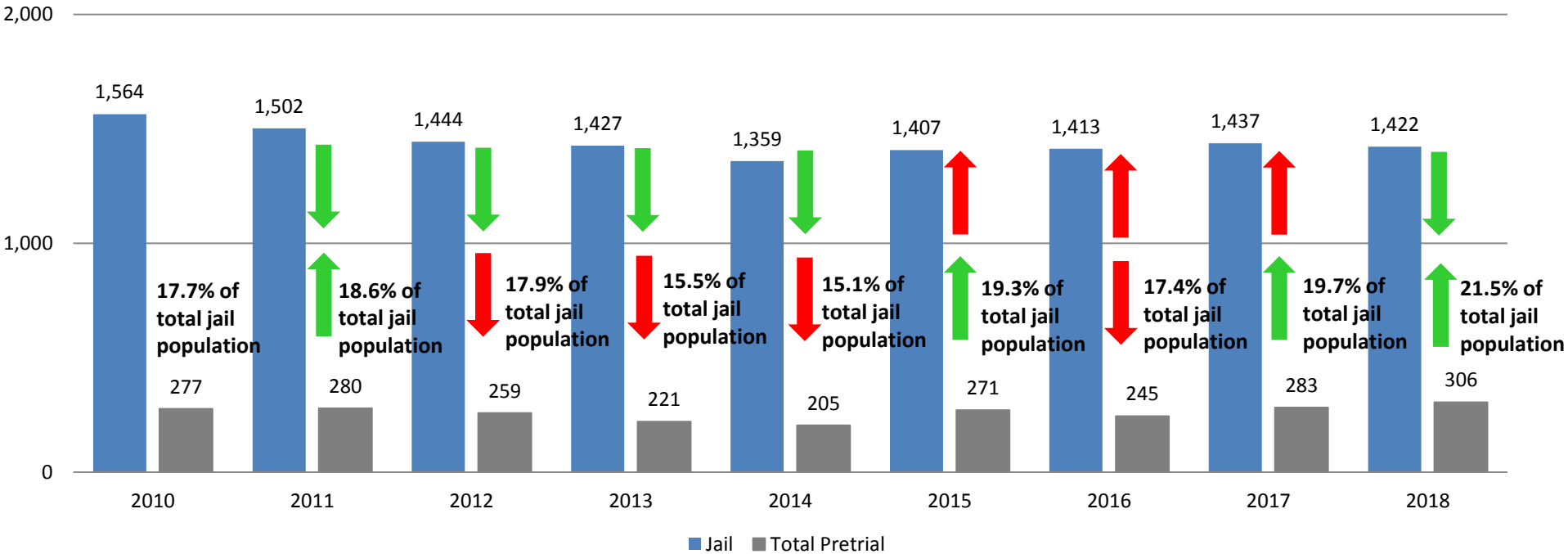
Pretrial Services Program (PSP) Monthly ADP: February 2016 - Present



February	2016 ADP	2017 ADP	2018 ADP	2016 YTD Avg.	2017 YTD Avg.	2018 YTD Avg.
Muni. Court	36	36	31	37	38	30
Dist. Court	195	210	264	222	212	276
Total	231	246	295	263	250	306

Correlation: Total & PSP

Total Annual ADP: 2010 - Present

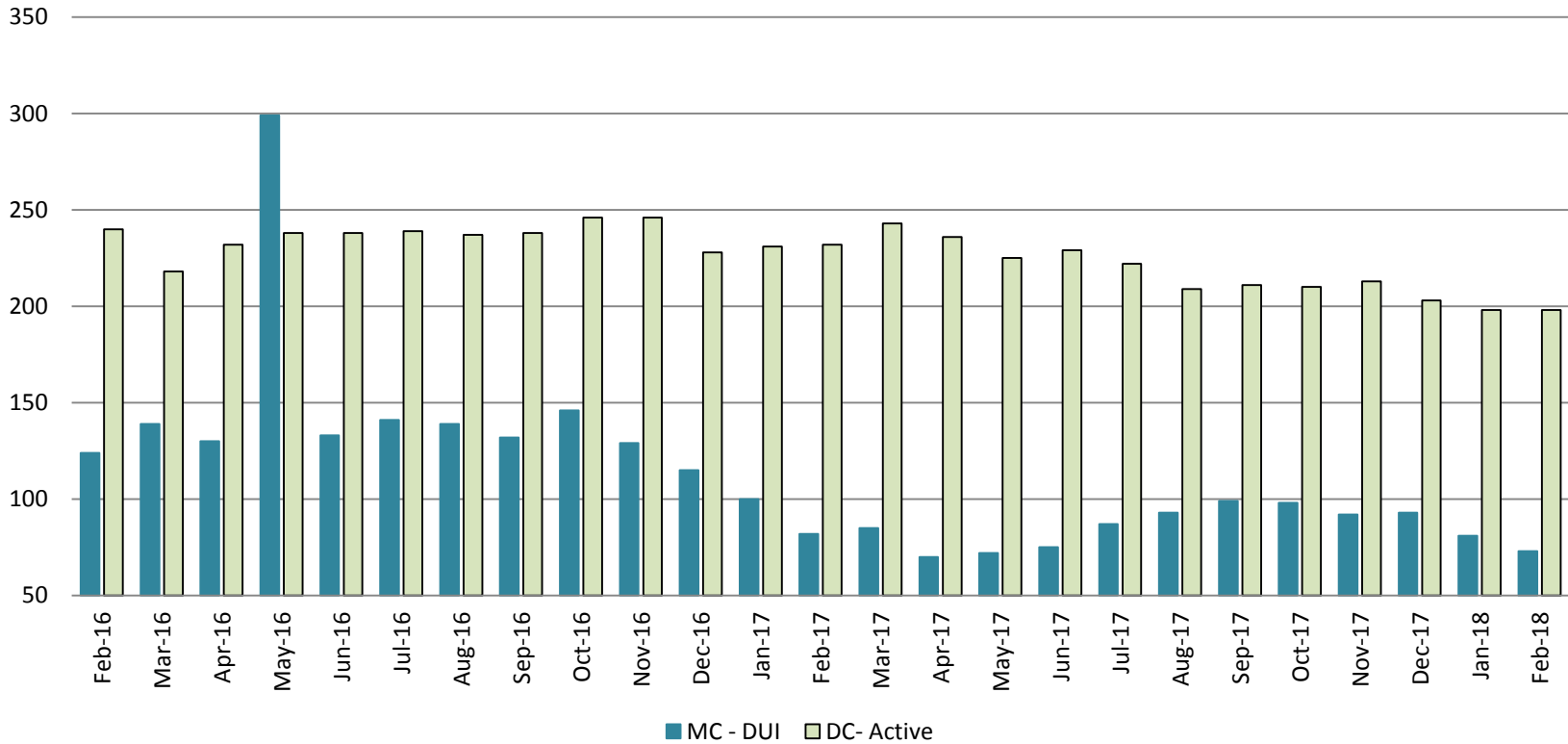


Arrows represent the overall increase/decrease of the population from year to year

Jail includes individuals in booking, detention, work release and out-of county (combined)

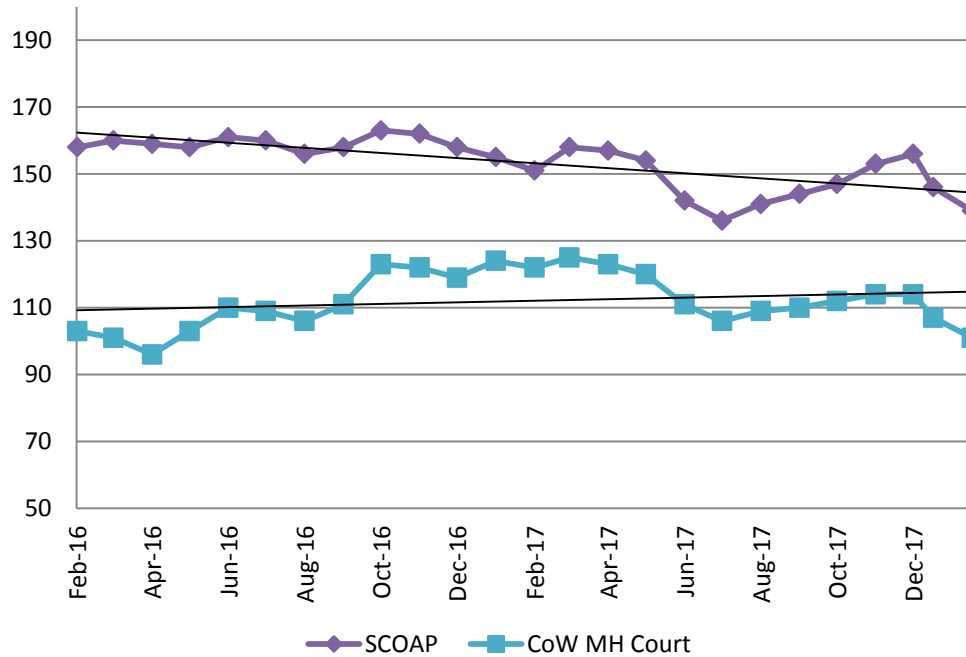
Diversion - Active Caseload

February 2016 - Present

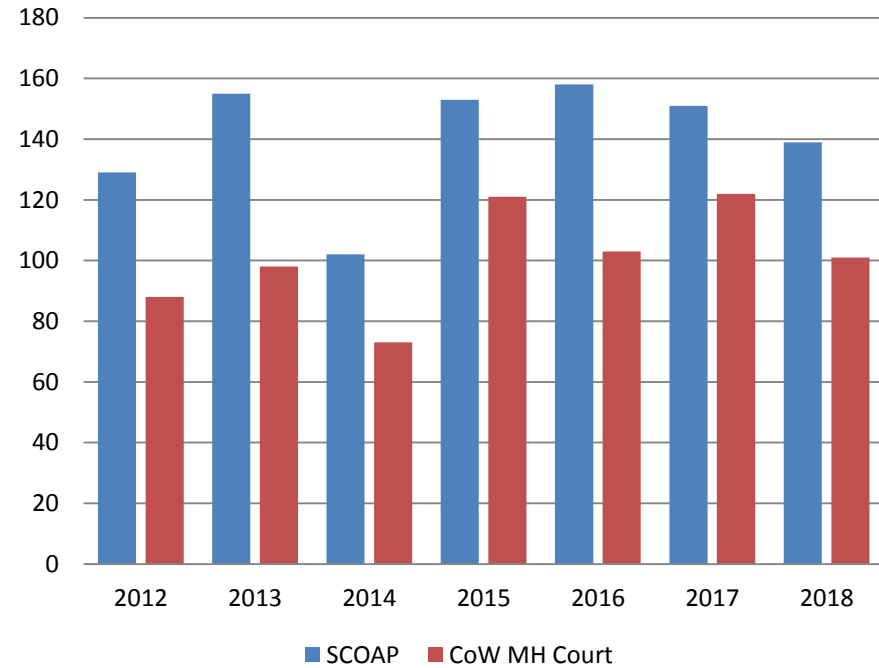


February	2016	2017	2018	2016 YTD Avg.	2017 YTD Avg.	2018 YTD Avg.
Muni. Court- DUI	124	82	73	127	91	77
Dist. Court- Active	240	232	198	238	232	198

Mental Health - ADP February 2016 - present

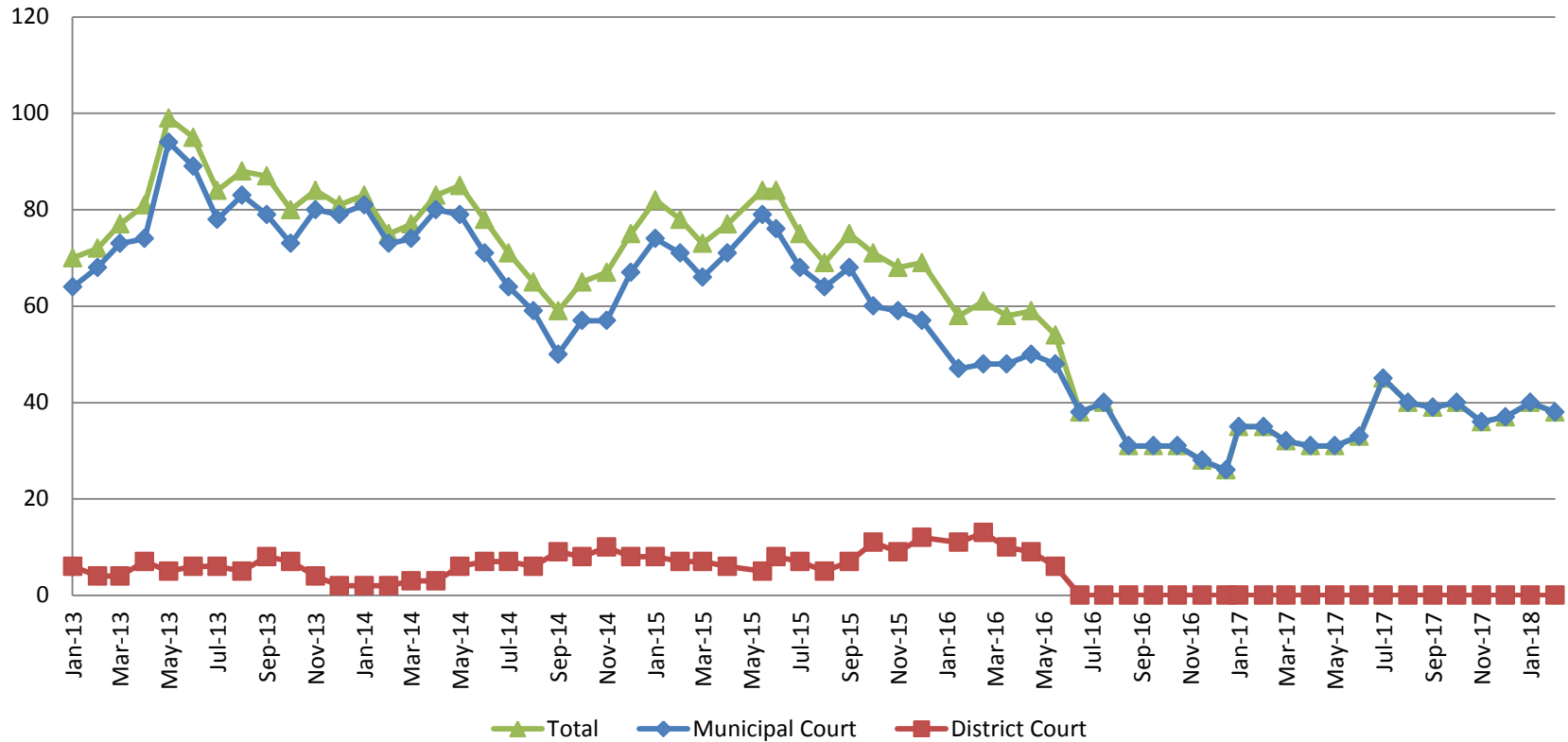


Mental Health ADP Year over Year- February



February	2016 ADP	2017 ADP	2018 ADP	2016 YTD Avg.	2017 YTD Avg.	2018 YTD Avg.
SCOAP	158	151	139	157	153	143
MH Court	103	122	101	98	123	104

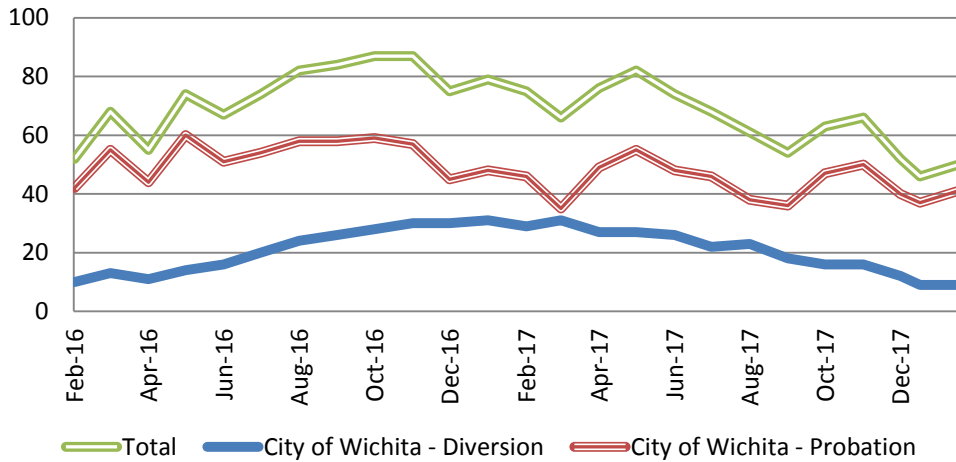
Day Reporting - Active Caseload 2013-present



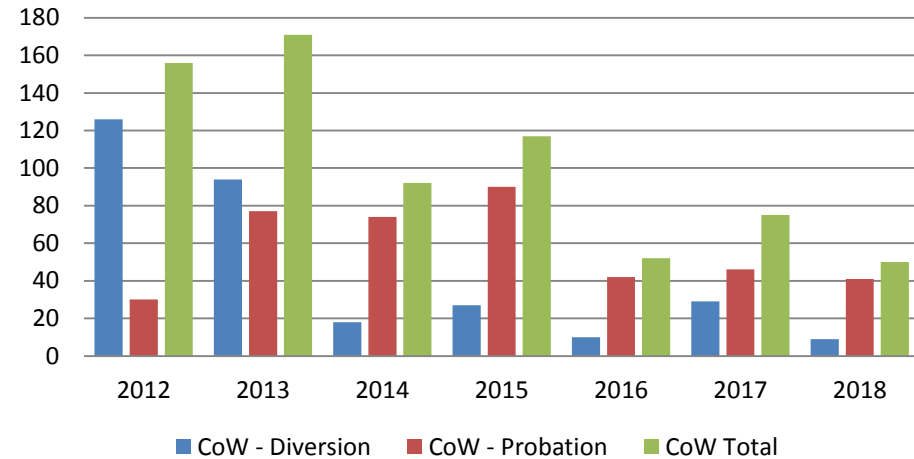
	2013	2014	2015	2016	2017	2018
Muni. Court	68	73	71	48	35	38
Muni. Court YTD Avg.	66	77	73	48	35	39



Drug Court - City of Wichita ADP: February 2016- present



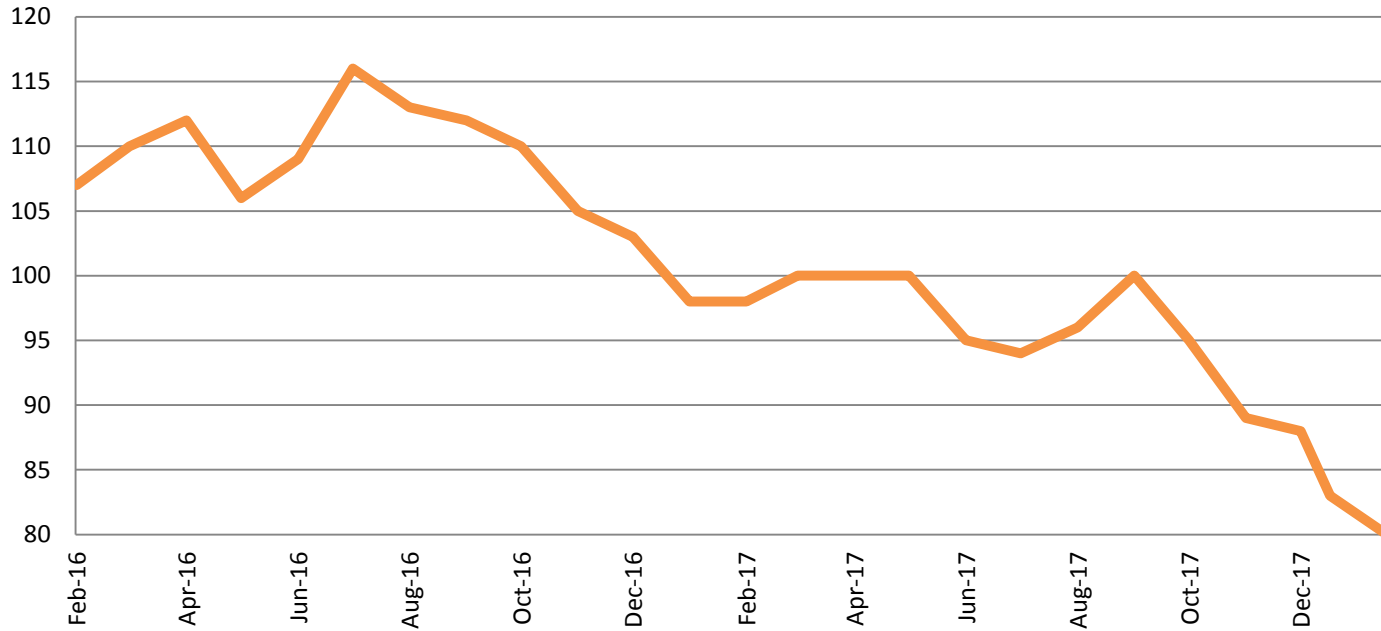
Drug Court- City of Wichita Year over Year- February



February	2016	2017	2018
Diversion	10	29	9
Probation	42	46	41
Total	52	75	50

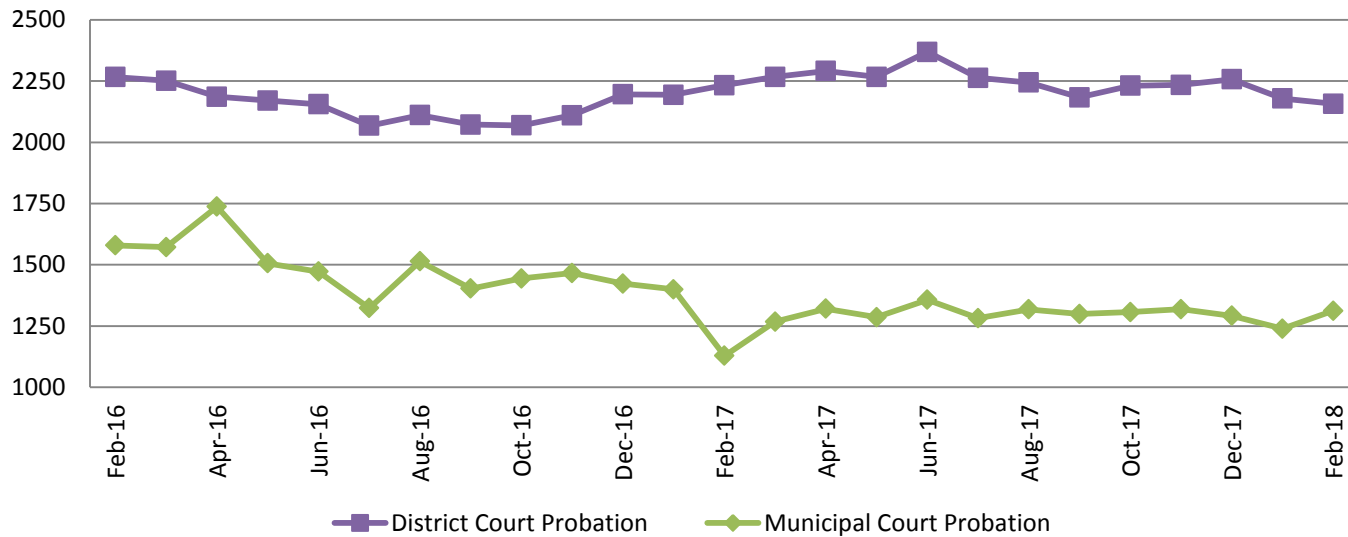


Drug Court - Sedgwick County ADP: February 2016 - present



February	2016	2017	2018
Sedg. Co. ADP	107	98	80
YTD Avg.	108	98	82

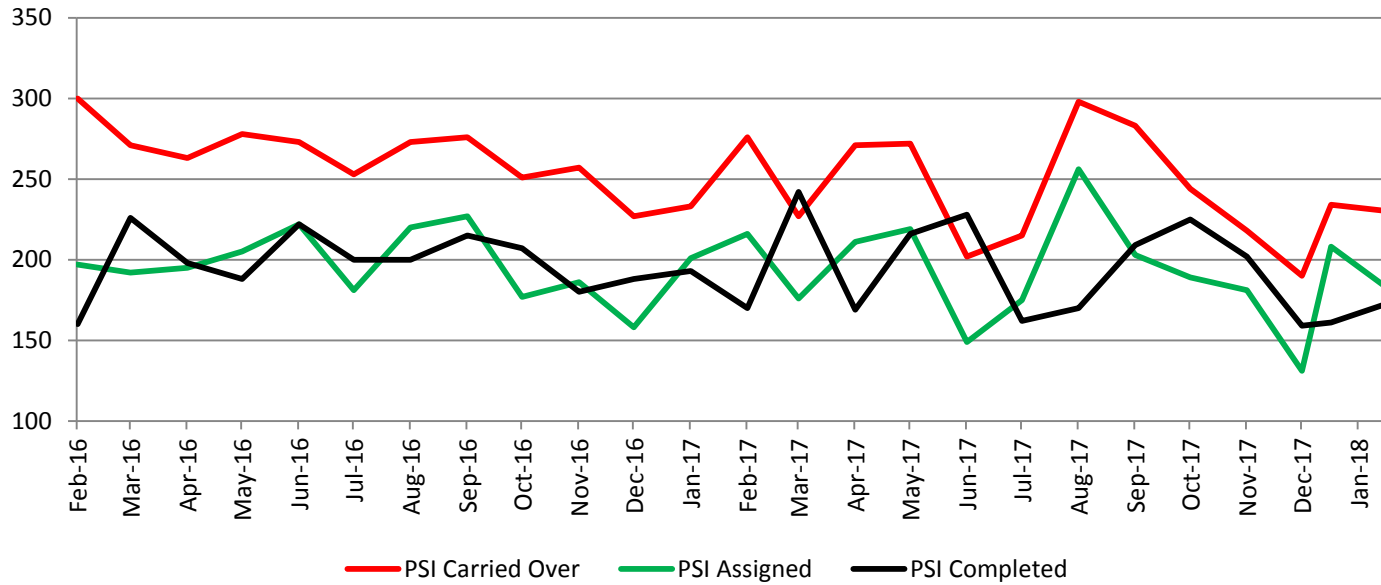
Probation - Active Caseloads February 2016 - present



February	2016	2017	2018	2016 YTD Avg.	2017 YTD Avg.	2018 YTD Avg.
Dist. Court Probation	2266	2233	2157	2285	2214	2168
Muni. Court Probation	1579	1129	1312	1540	1265	1276



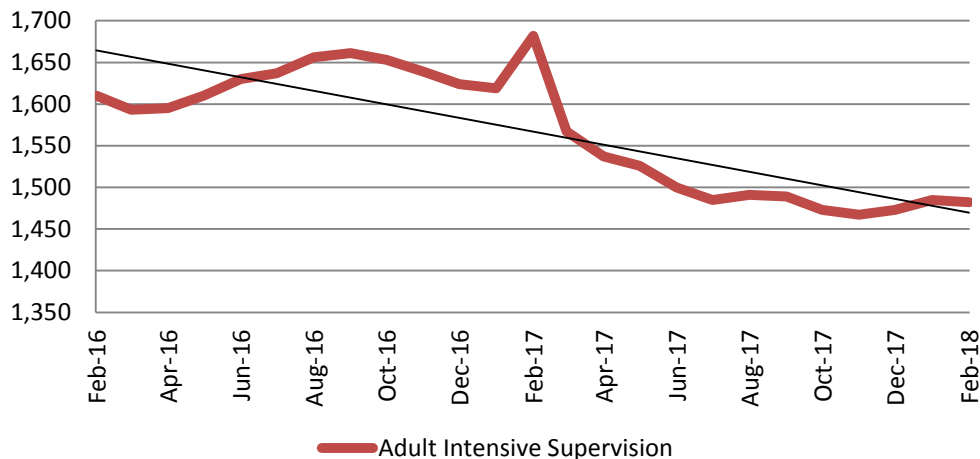
District Court Probation: Pre-Sentence Investigation February 2016 - present



	February 2016	2017	2018
Carried Over	300	276	230
Assigned	197	216	182
Completed	160	170	173

Community Corrections

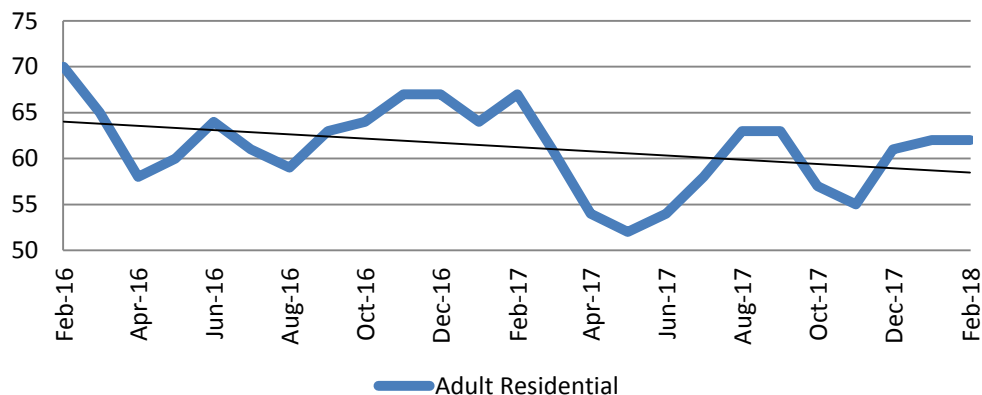
**Adult Intensive Supervision Probation (AISP) ADP
February 2016- present**



Year	February	February YTD Avg.
2016	1,610	1,622
2017	1,682	1,6151
2018	1,482	1,4854

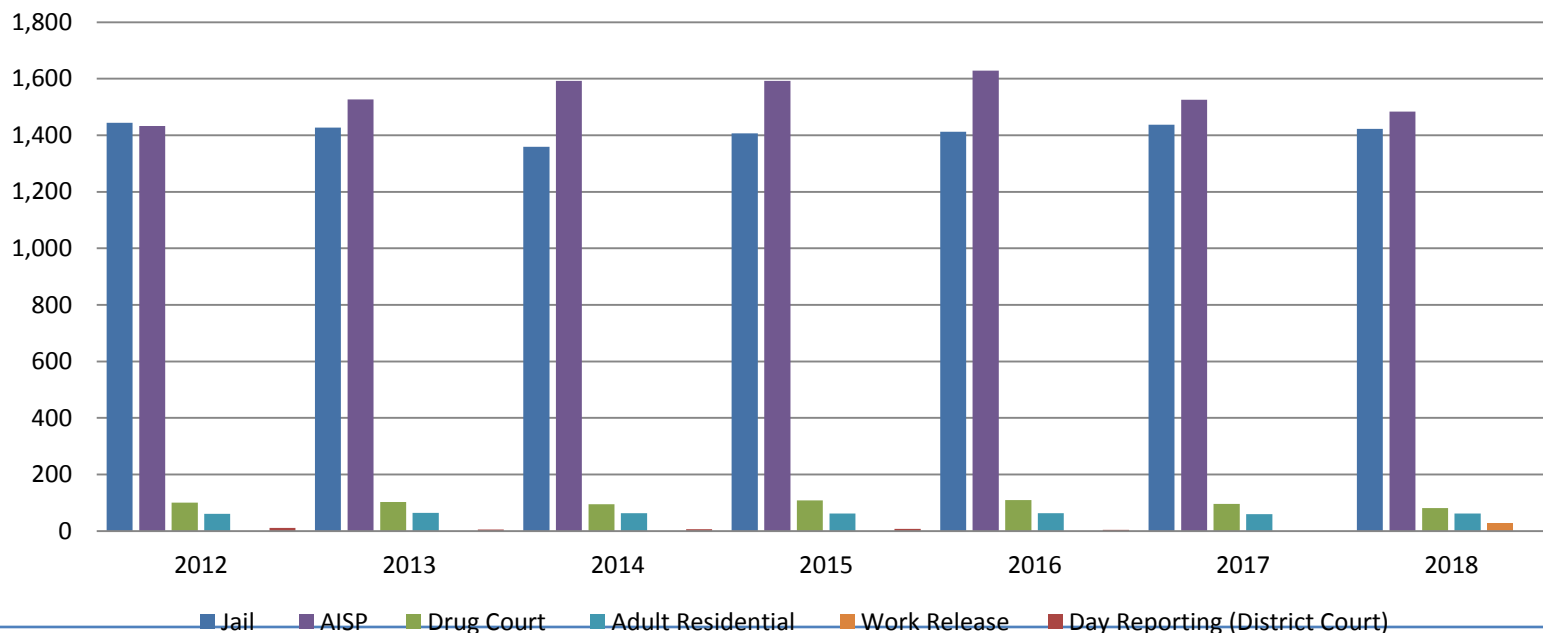
Year	February	February YTD Avg.
2016	70	67
2017	67	66
2018	62	62

**Adult Residential: ADP
February 2016- present**



Correlation: Total & Sedgwick County Programs (Adult)

Total Annual ADP 2012-Present



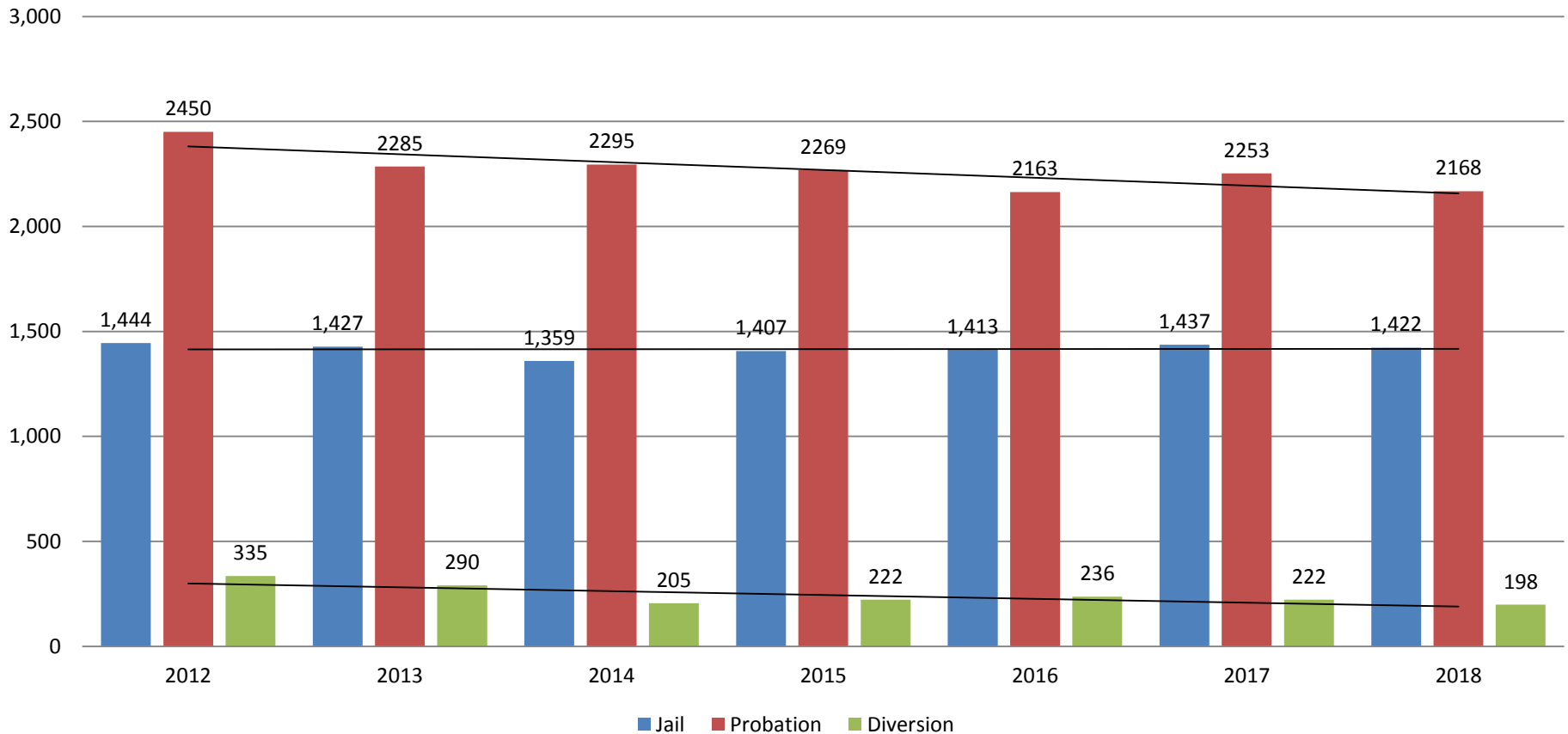
	2016	2017	2018
Jail	1,413	1,437	1,422
AISP	1,629	1,526	1,484
Drug Court	109	96	82
Adult Residential	63	59	62
Work Release	0	0	26
Day Reporting (DC)	4	0	0



Jail includes individuals in booking, detention, work release and out-of county (combined)
 Sedgwick County... working for you (data obtained from detention facility, SG Dept. of Corrections, Pretrial Services, & CoW)

Correlation: Total & District Court Programs

Total Annual ADP: 2012 - Present

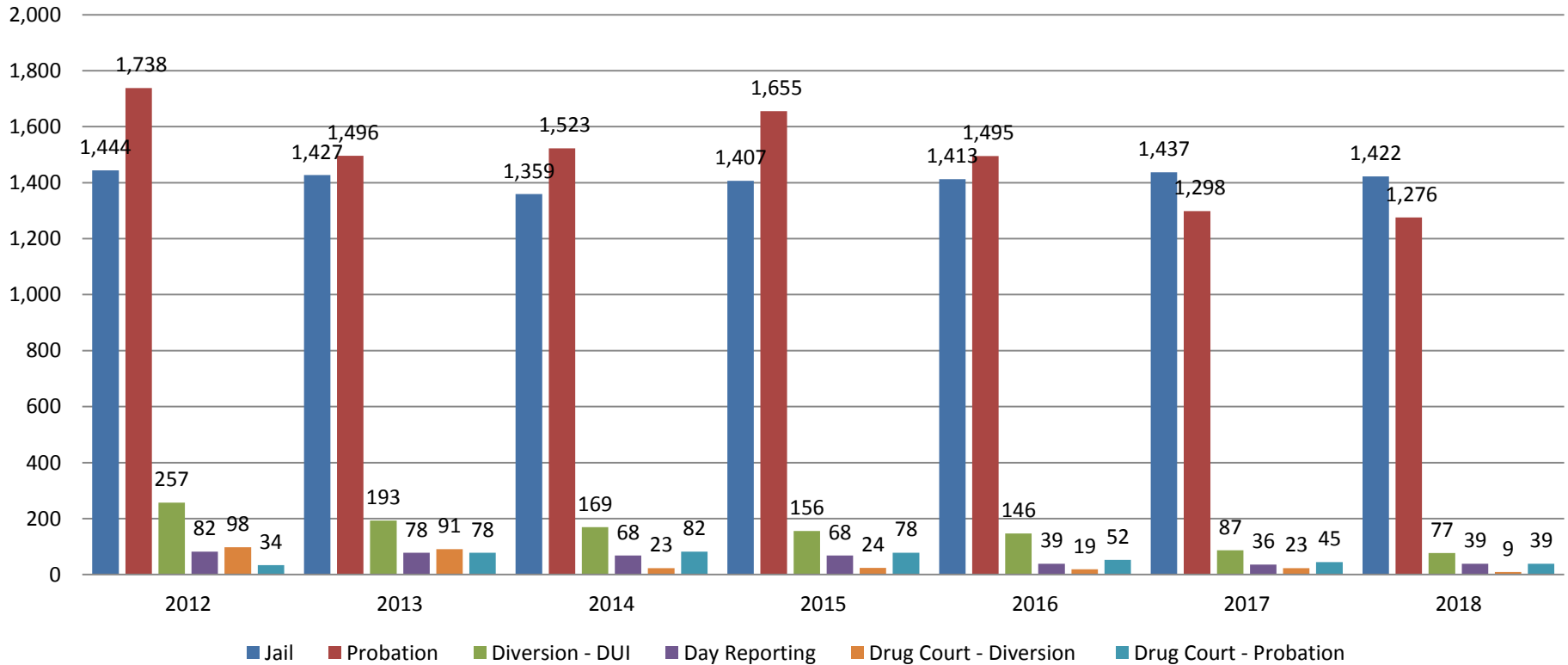


Jail includes individuals in booking, detention, work release and out-of county (combined)



Correlation: Total & City of Wichita / Municipal Court Programs

Total Annual ADP: 2012 - present

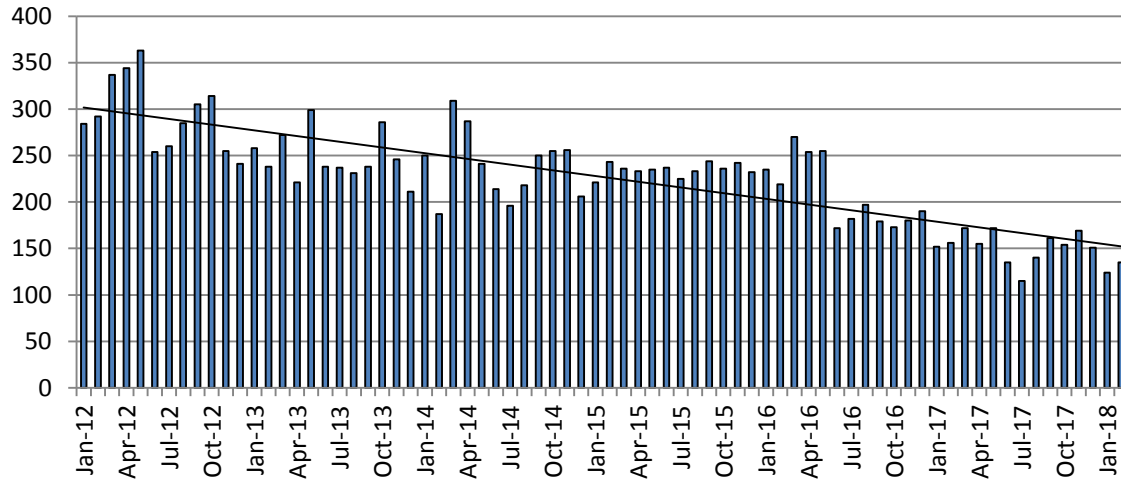


Jail includes individuals in booking, detention, work release and out-of county (combined)



Juvenile

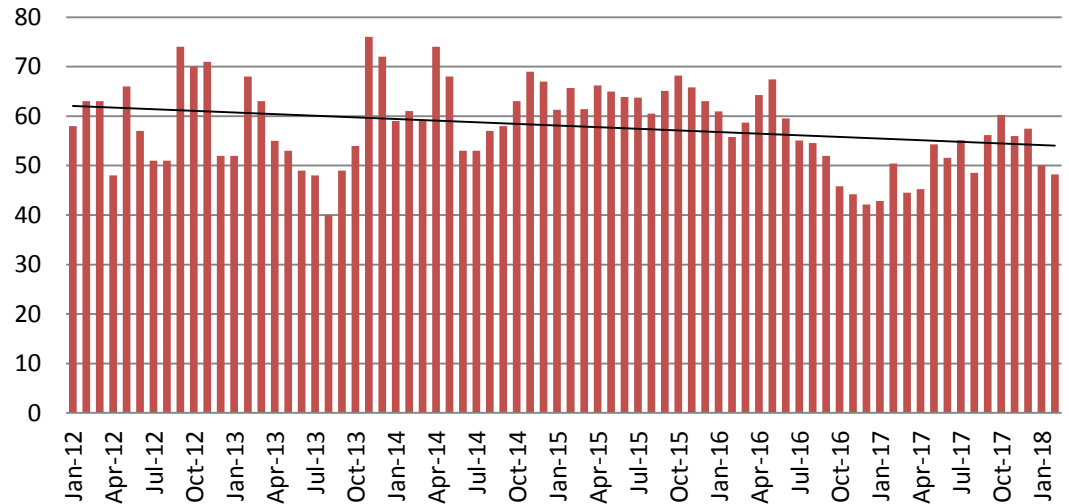
JIAC Intakes: 2012 - present



Year	Feb.	Feb. YTD Avg.
2013	238	248
2014	187	219
2015	243	232
2016	219	227
2017	156	154
2018	135	130

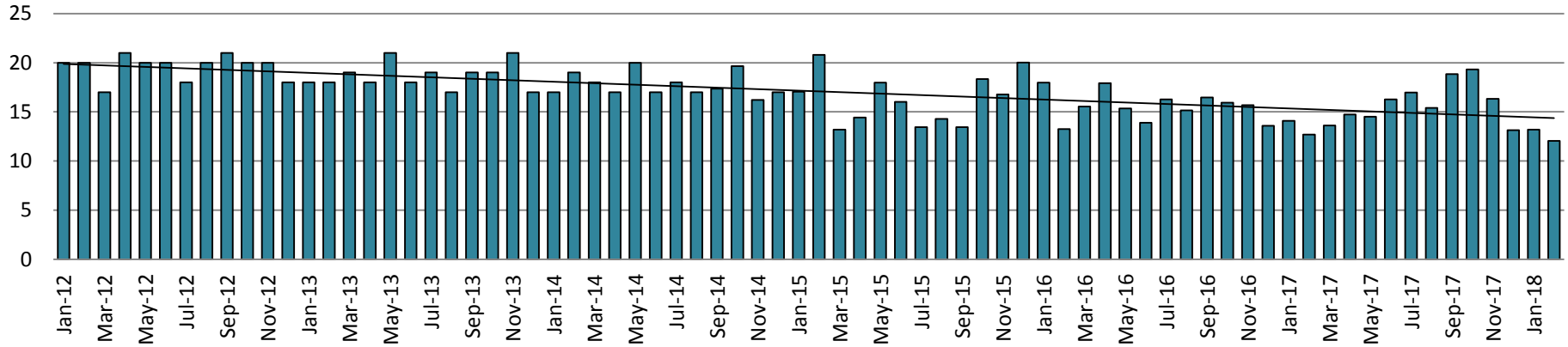
Year	Feb.	Feb. YTD Avg.
2013	68	60
2014	61	60
2015	66	63
2016	56	58
2017	50	47
2018	48	49

JDF ADP: 2012 - present

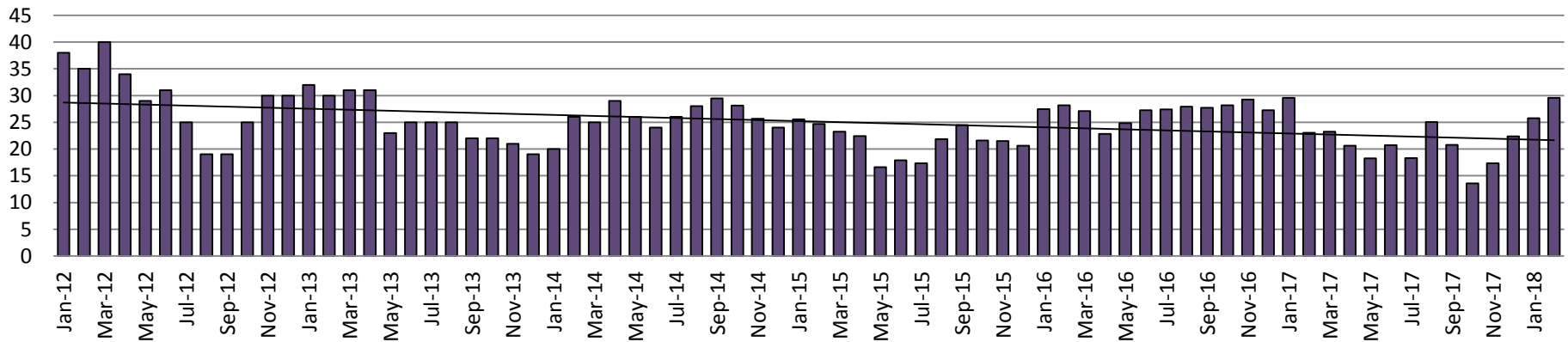


Juvenile Detention Alternatives

Juvenile Residential Facility (JRF) ADP: 2012 - present

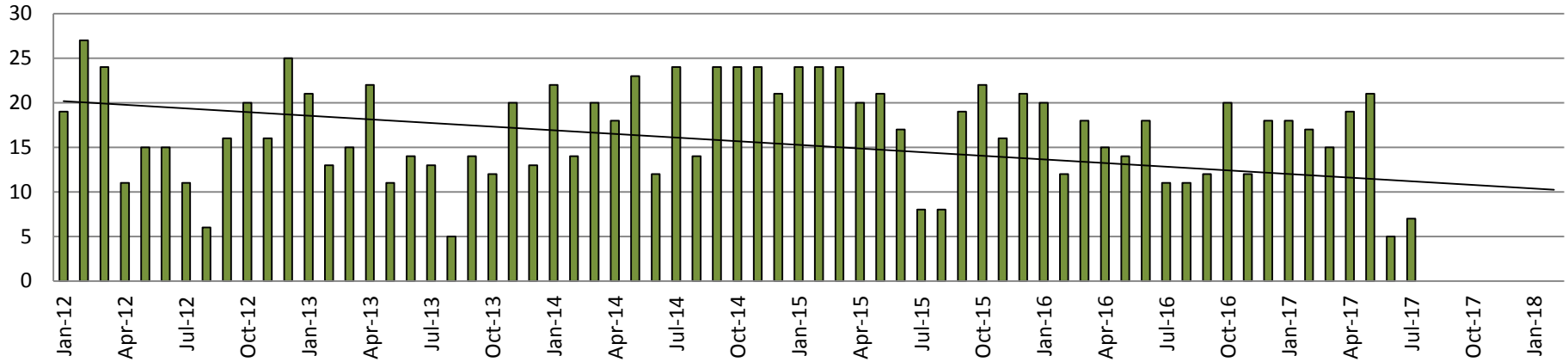


Home-Based Supervision ADP: 2012 - present

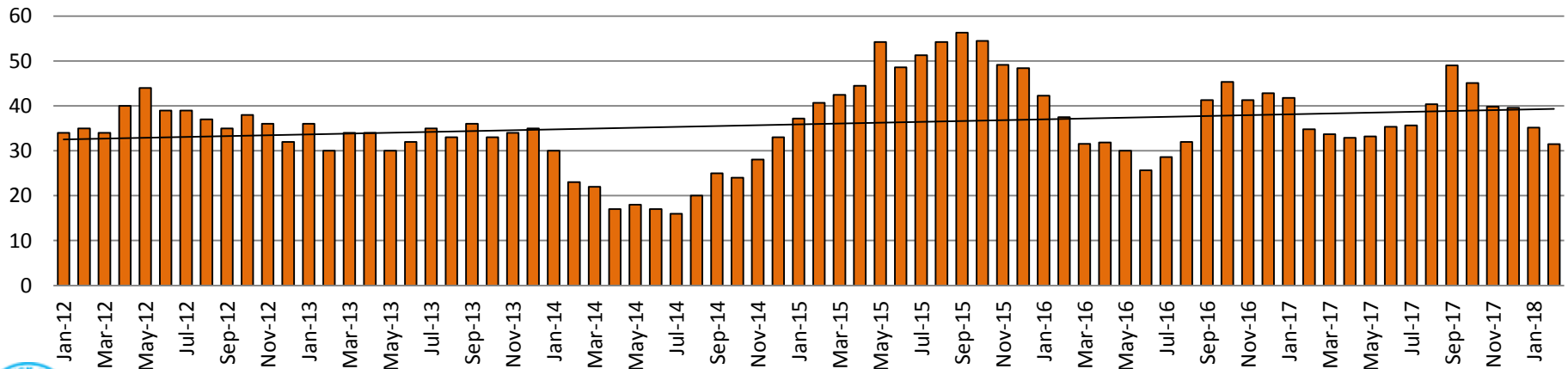


Juvenile Detention Alternatives

Weekend Alternative Detention Program 2012 - present



Detention Advocacy Case Management Services ADP: 2012 - present



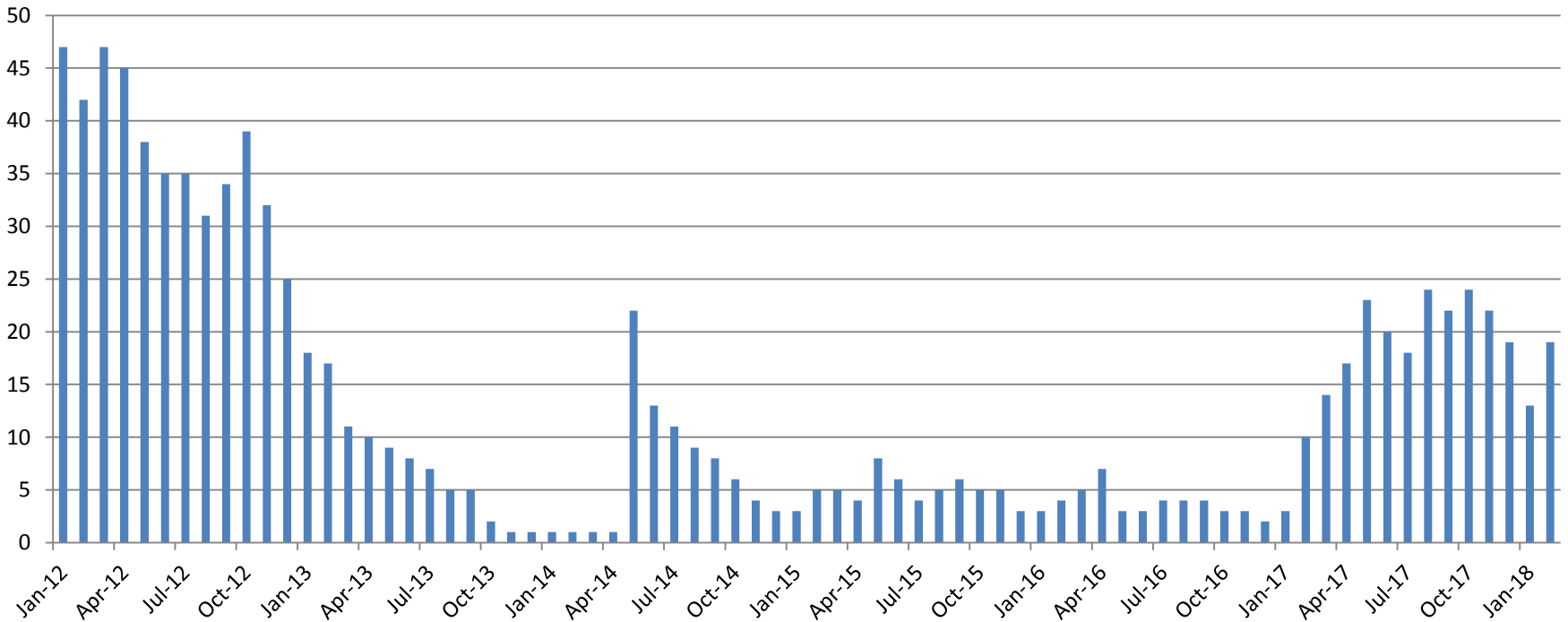
Juvenile Detention Services

February ADP	2015	2016	2017	2018
Juvenile Detention Facility	66	56	50	48
Juvenile Residential Facility	21	13	13	12
Home Based Supervision	25	28	23	30
Detention Advocacy Case Management Services	41	38	35	32
Weekend Alternative Detention Program (total)	24	12	17	0

February YTD AVERAGE	2015	2016	2017	2018
Juvenile Detention Facility	63	58	47	49
Juvenile Residential Facility	19	16	13	13
Home Based Supervision	25	28	26	28
Detention Advocacy Case Management Services	39	40	38	33
Weekend Alternative Detention Program	24	16	18	0

Monthly Jail Snapshot: February 28, 2018

BICE Holds 2012-Present

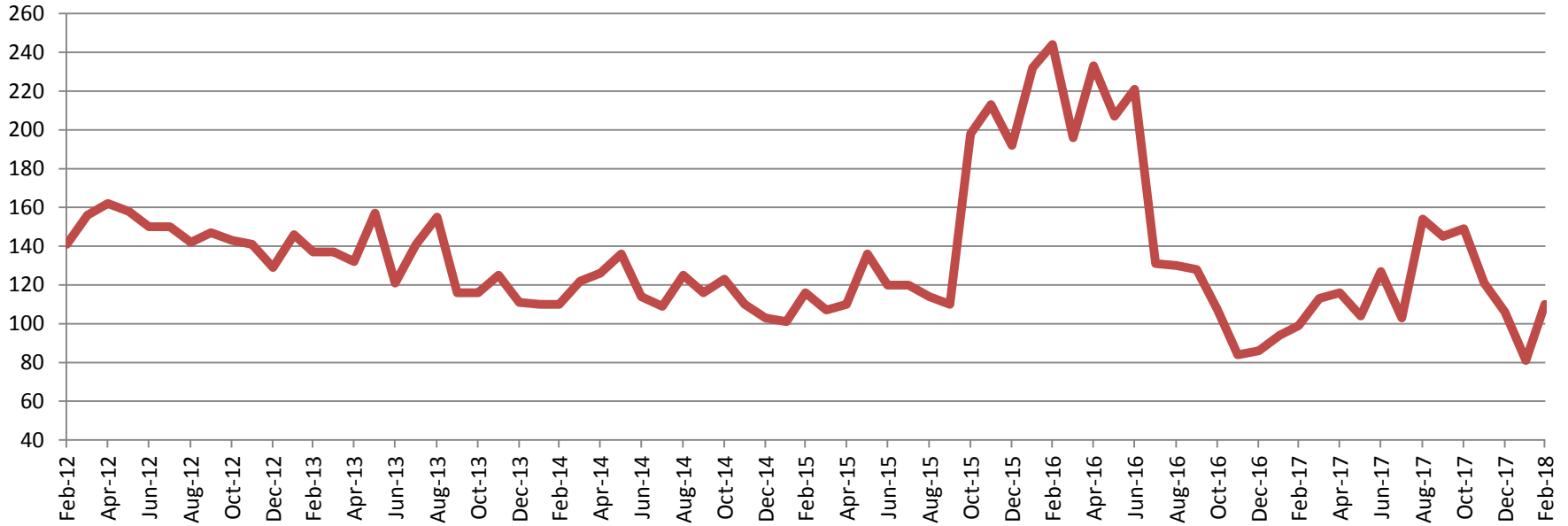


2013	2014	2015	2016	2017	2018
17	1	5	4	10	19



Monthly Jail Snapshot: February 28, 2018

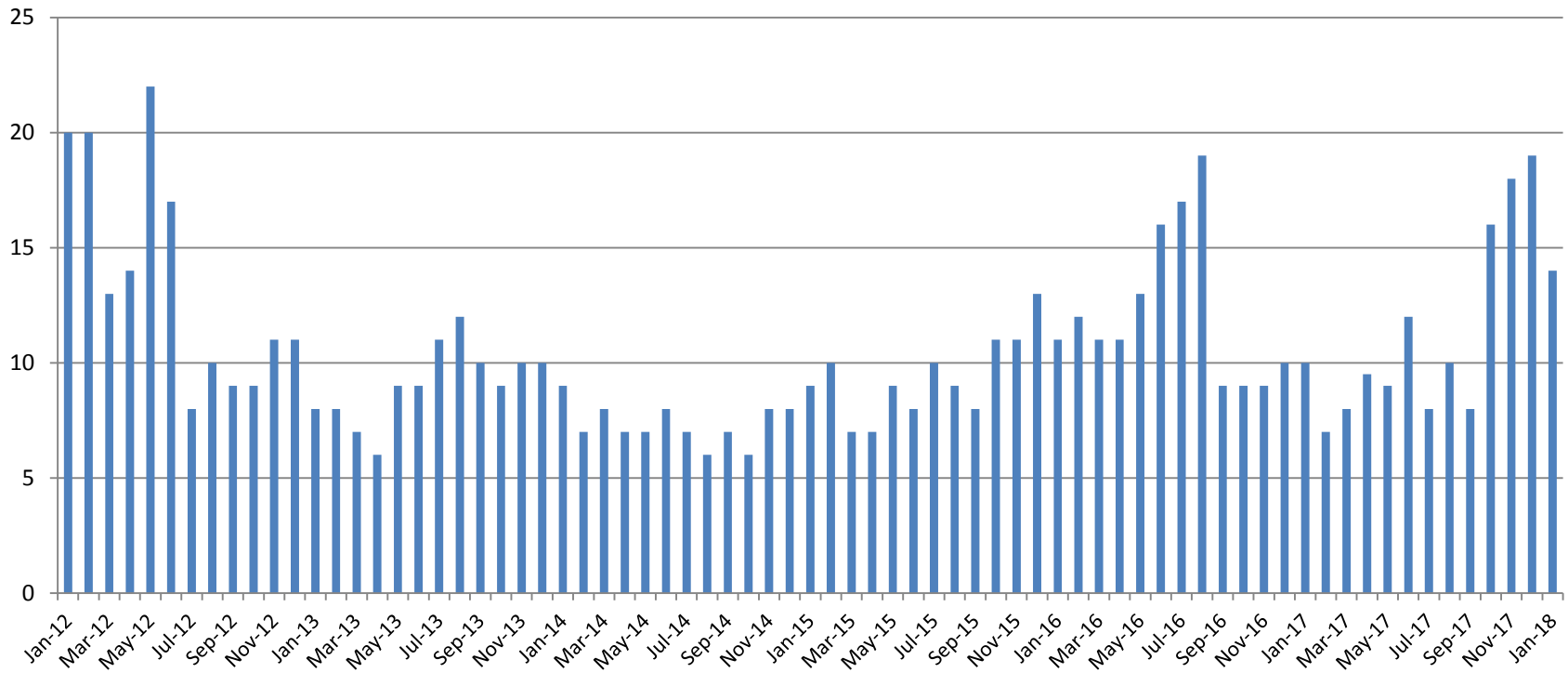
Felony Commitments: February 2012 - present



2013	2014	2015	2016	2017	2018
137	110	116	224	99	110



Journal Entry Completion (Average Days) January 2012-Present



Jan.	2013	2014	2015	2016	2017	2018
Avg. Days	8	9	9	11	10	14
YTD Avg.	8	9	9	11	10	14

