

Criminal Justice Coordinating Council

Population Report & Program Trends

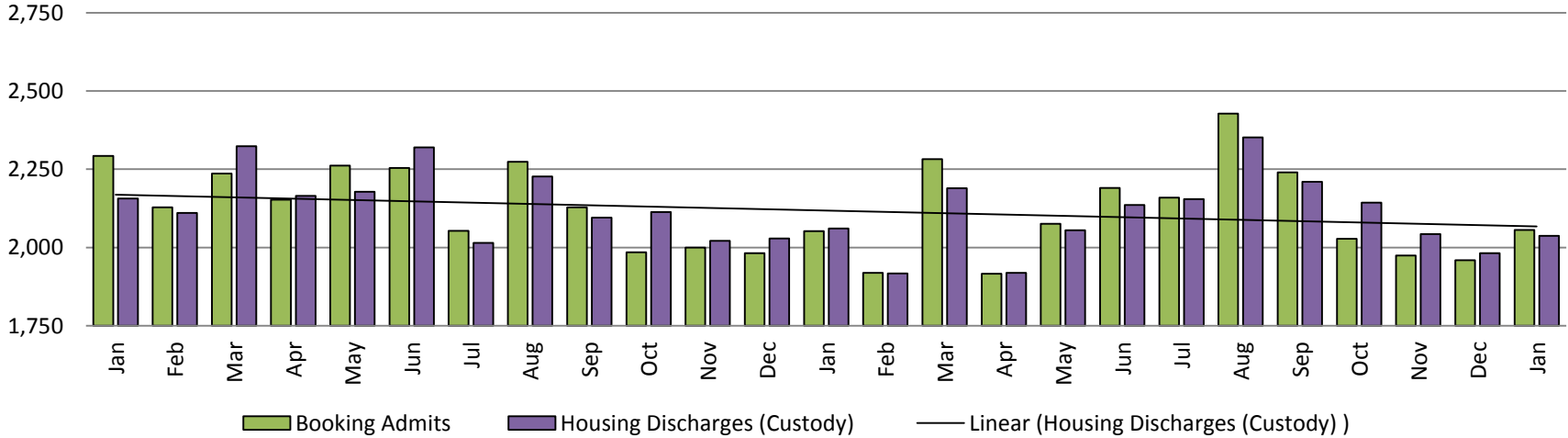
February 2018



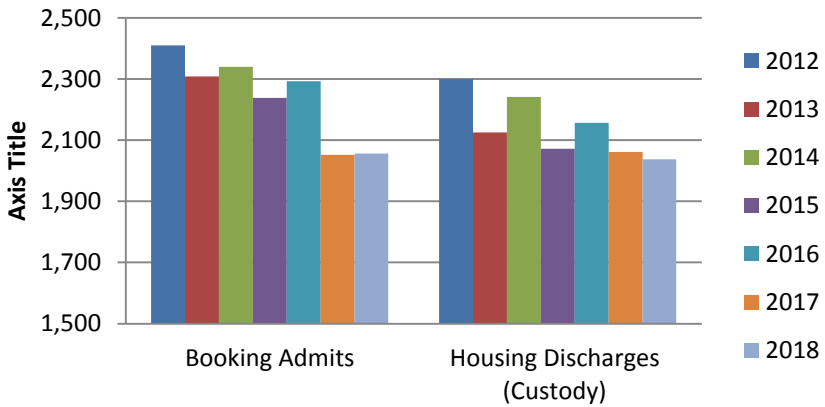
Sedgwick County...
working for you

Detention Facility

Booking Admits & Housing Discharges from Custody January 2016-Present

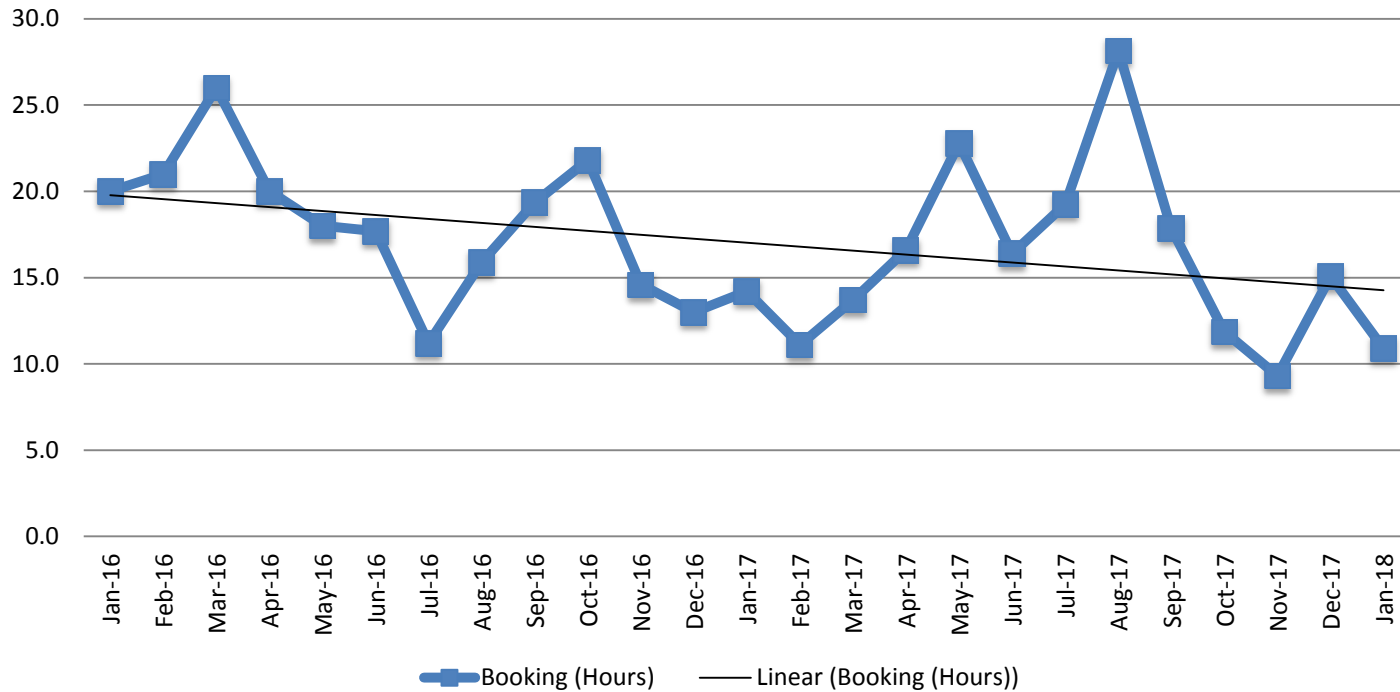


Bookings Year over Year: Month of January



Bookings January	Housing Discharges January
2016: 2,293	2016: 2,157
2017: 2,052	2017: 2,061
2018: 2,056	2018: 2,037

Average Length of Stay: Booking (Hours) January 2016 - Present

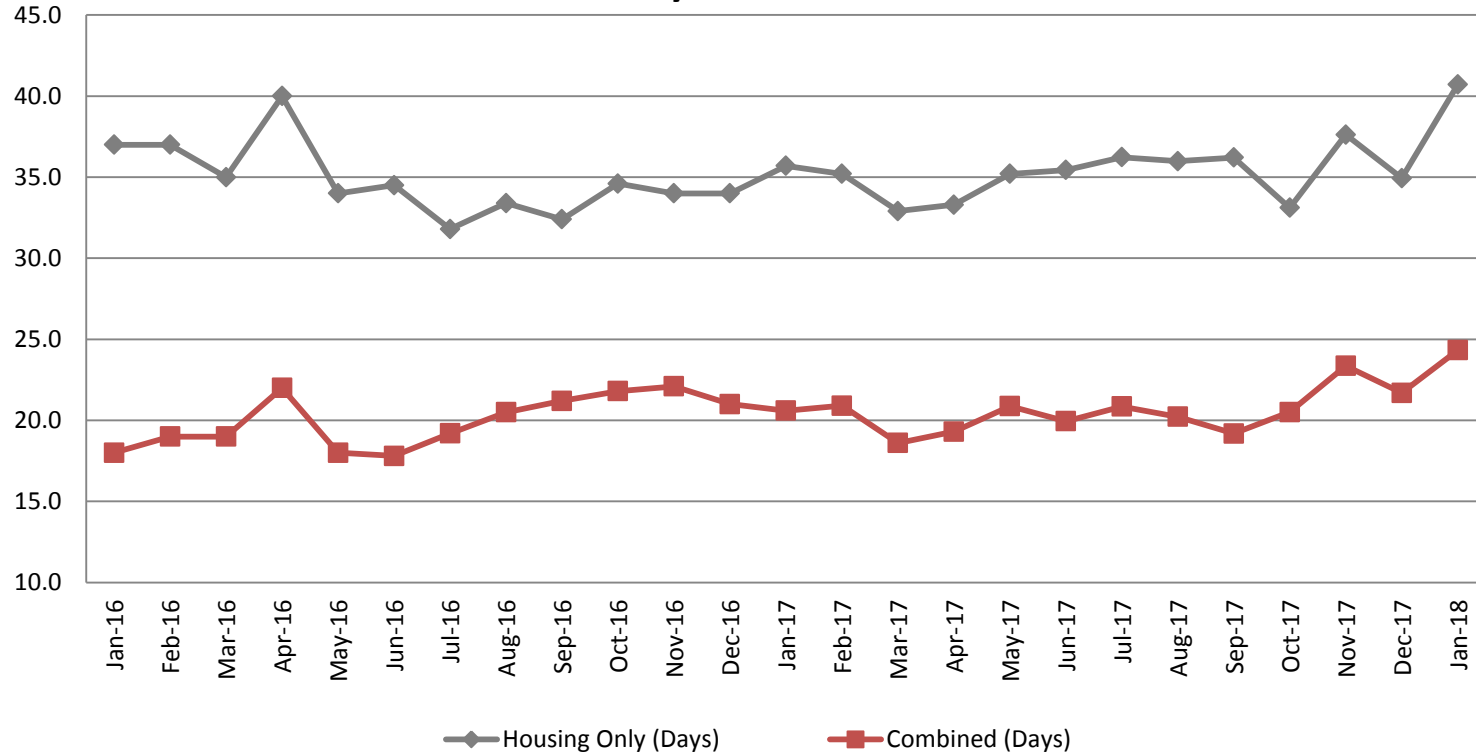


January		January YTD Average	
2016:	20.0	2016:	20.0
2017:	14.2	2017:	14.2
2018:	10.9	2018:	10.9



Average Length of Stay: Housing & Combined (Days)

January 2016 - Present



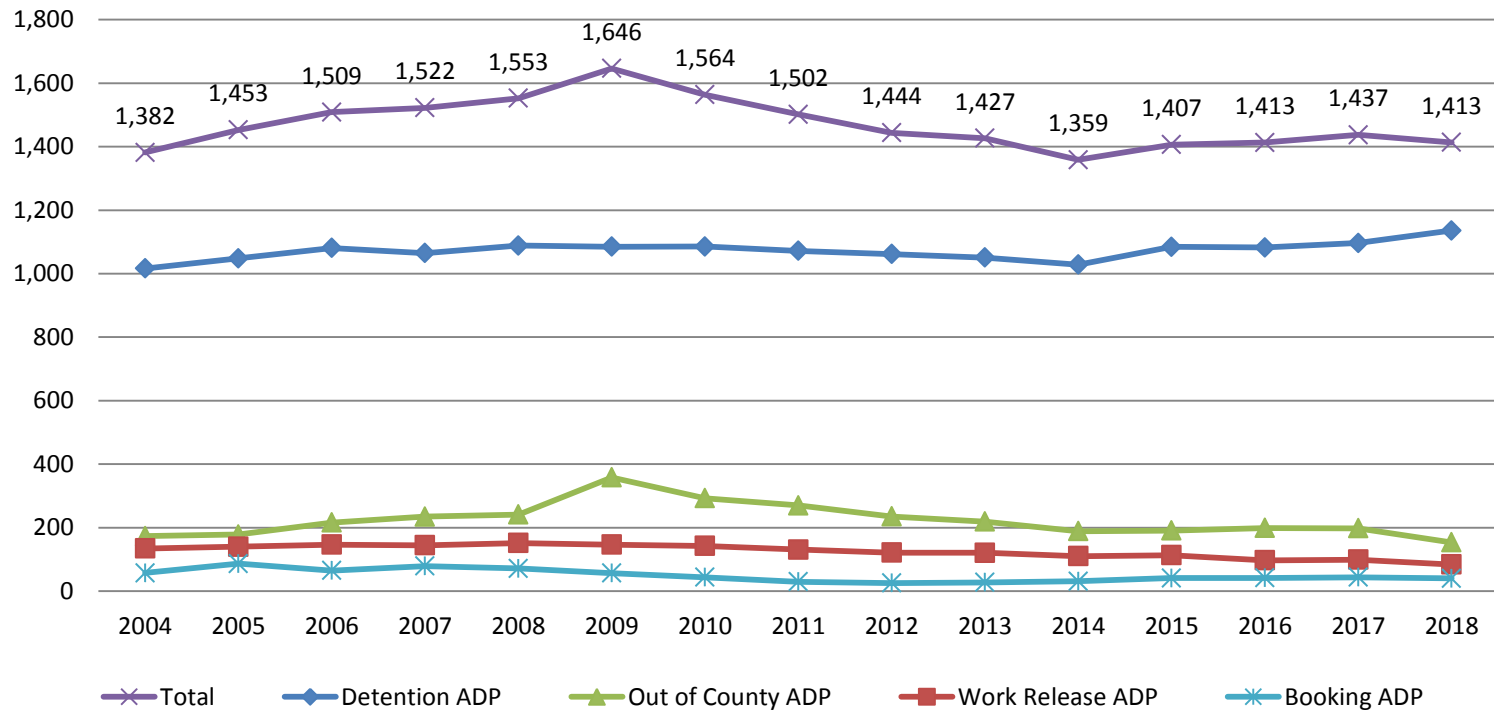
Month, Year	Housing Only	Housing YTD AVG	Combined Days	Combined YTD AVG
January 2016	37.0	37.0	18.0	18.0
January 2017	35.7	35.7	20.6	20.6
January 2018	40.7	40.7	24.3	24.3

(data obtained from detention facility)



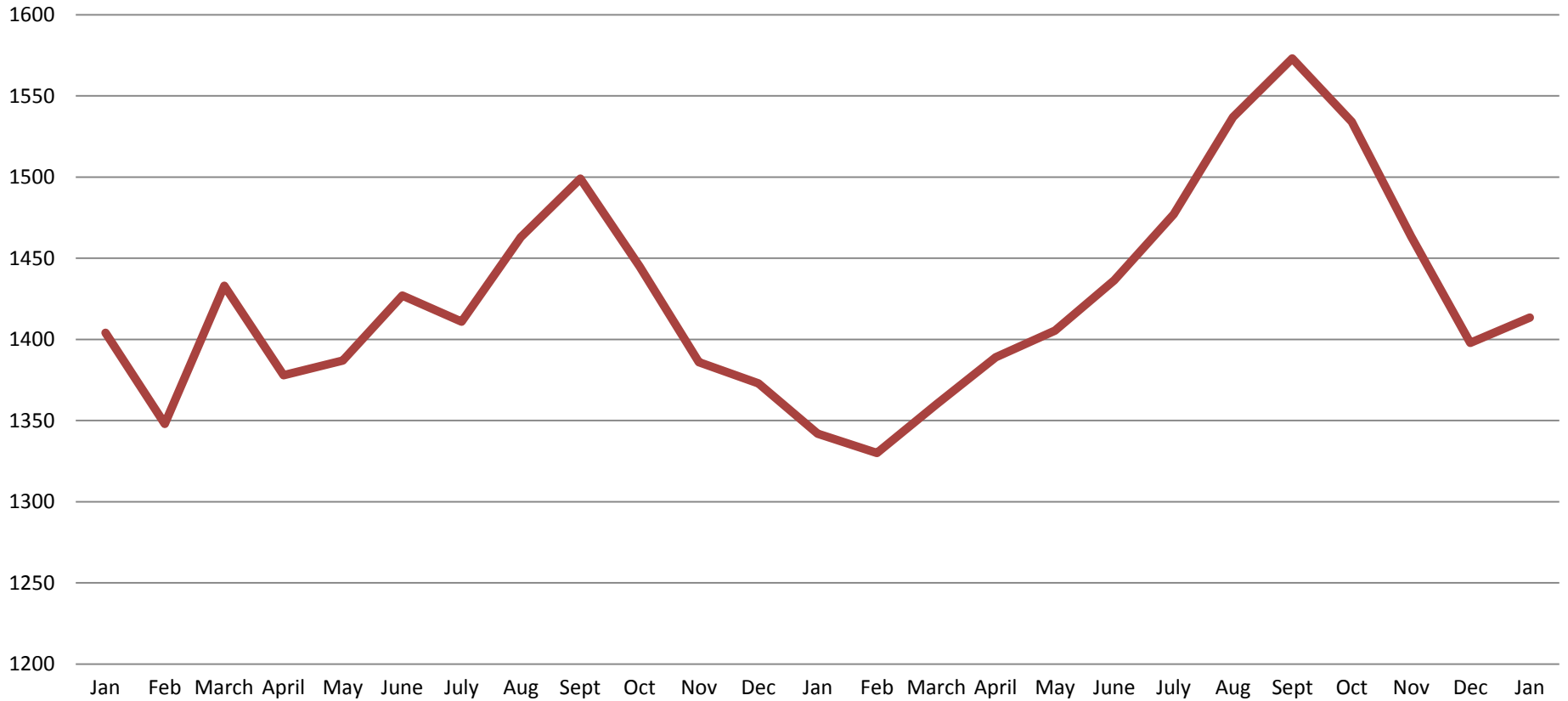
Jail: Annual Average Daily Population (ADP)

TRENDS: Booking, Detention, Work Release, & Out of County
Annual ADP: 2004 - present



*Beginning January 2018, Work Release program began transfer to Division of Corrections

TOTAL MONTHLY ADP: JAIL (Booking, Detention Facility, Work Release, & Out of County) January 2016 - present

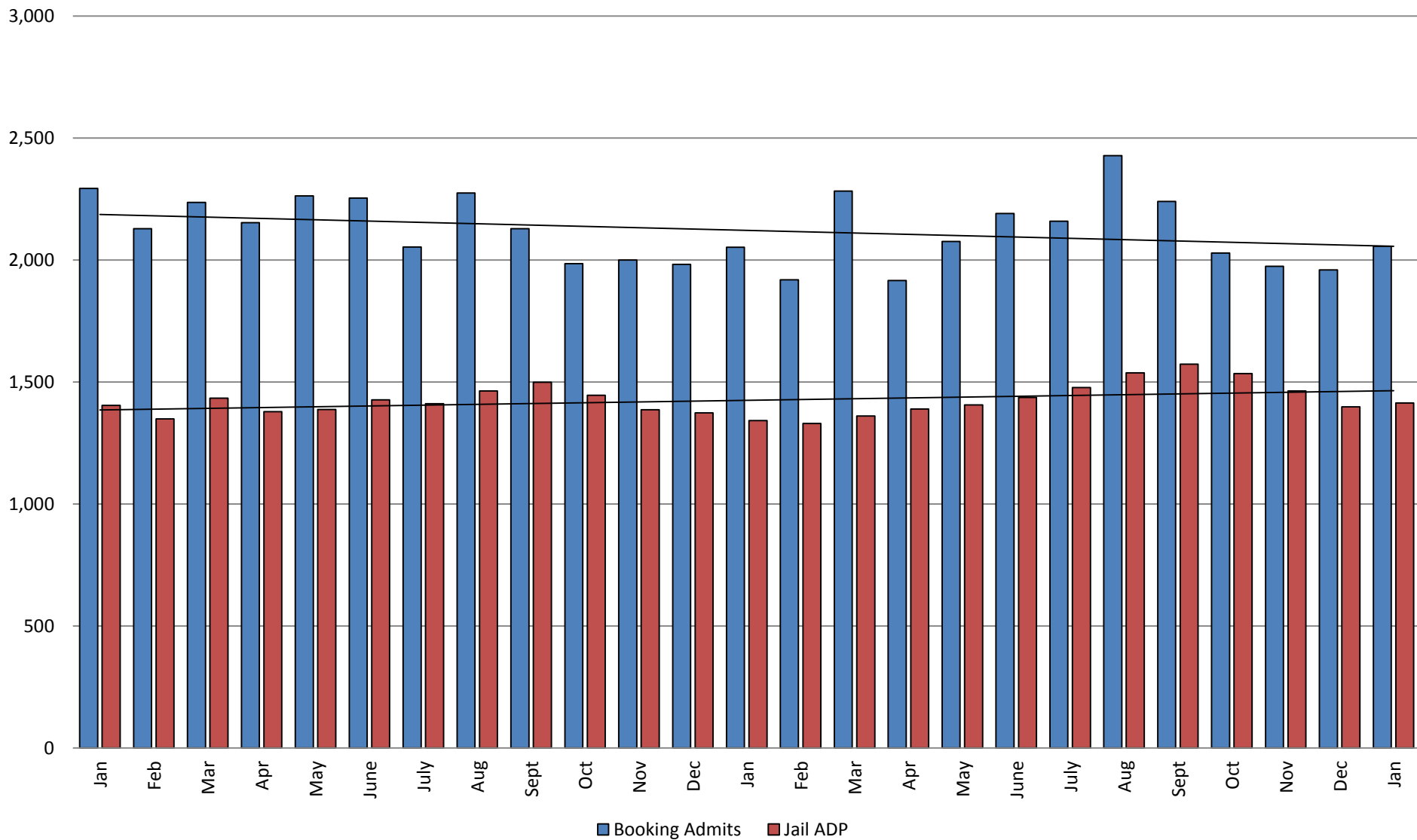


Jan 2016	Jan 2017	Jan 2018
1,404	1,342	1,413

*Beginning January 2018, Work Release program began transfer to Division of Corrections

This slide shows total monthly ADP for individuals in booking, detention, work release and out-of county (combined)
(data obtained from detention facility)

Booking Admits & Total Monthly ADP (Jail): January 2016 - present



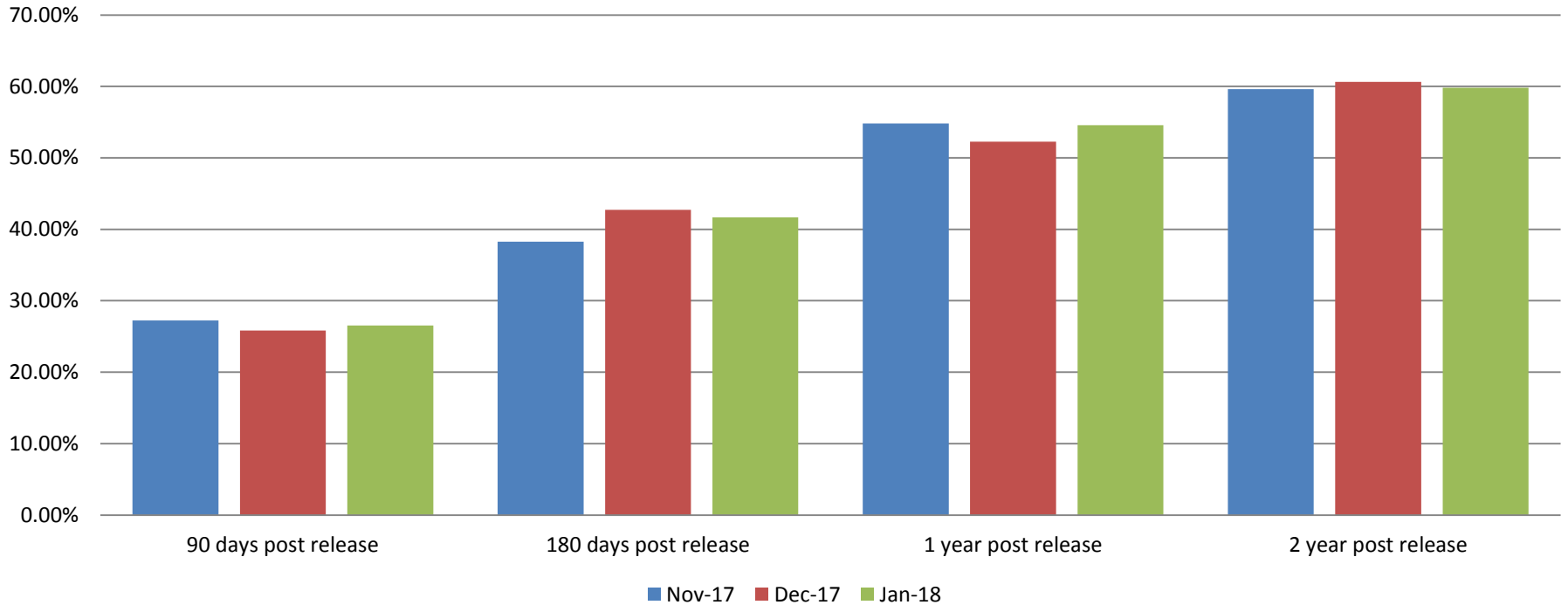
Jail includes individuals in booking, detention, work release and out-of county (combined)

(data obtained from detention facility)



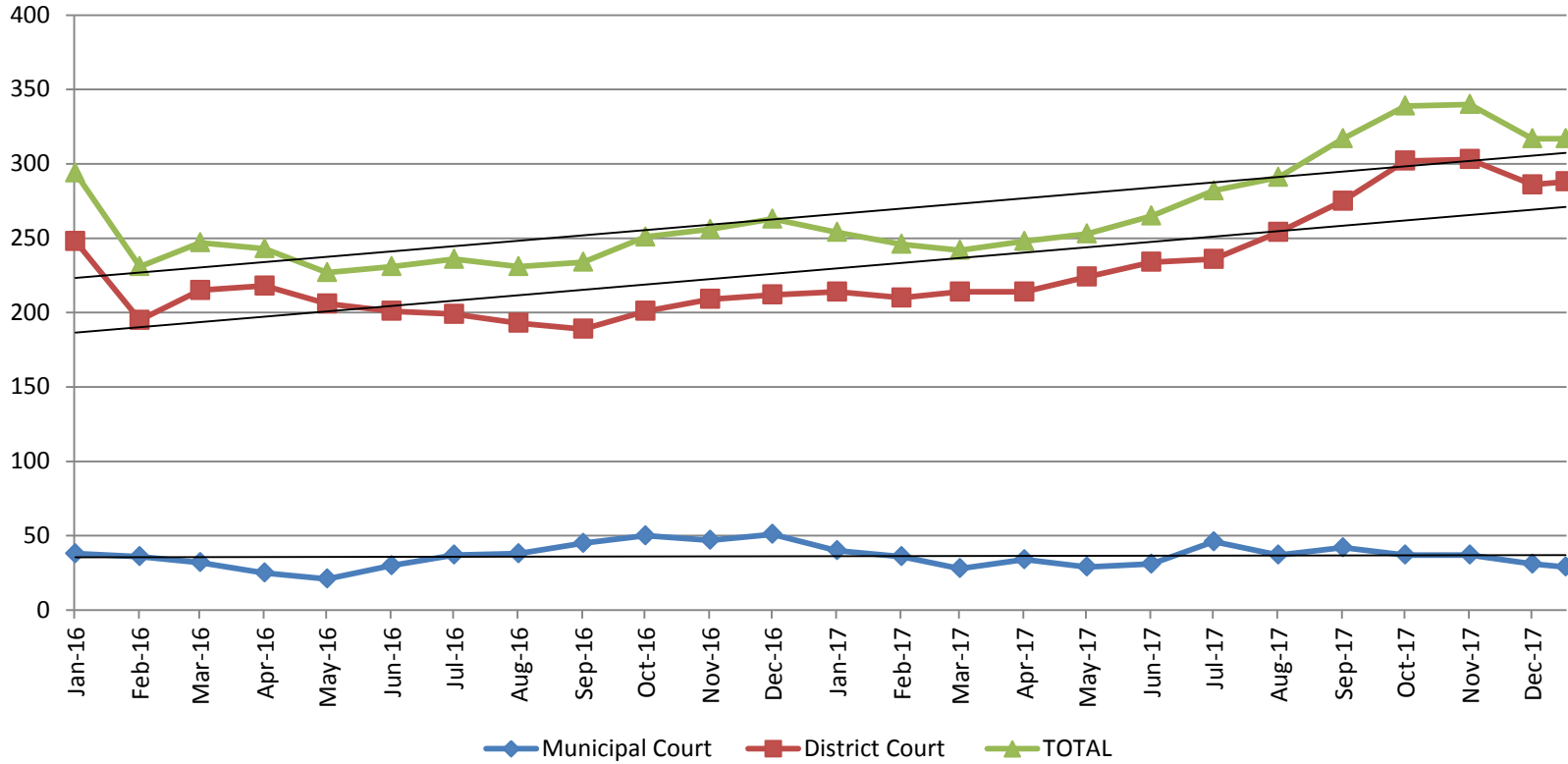
Sedgwick County...
working for you

Percent of released inmates rearrested



Month, Year	90 Days	180 Days	1 Year	2 Years
Nov 2017	27.25%	38.27%	54.81%	59.64%
Dec 2017	25.85%	42.72%	52.28%	60.64%
Jan 2018	26.55%	41.67%	54.57%	59.84%

Pretrial Services Program (PSP) Monthly ADP: January 2016 - Present



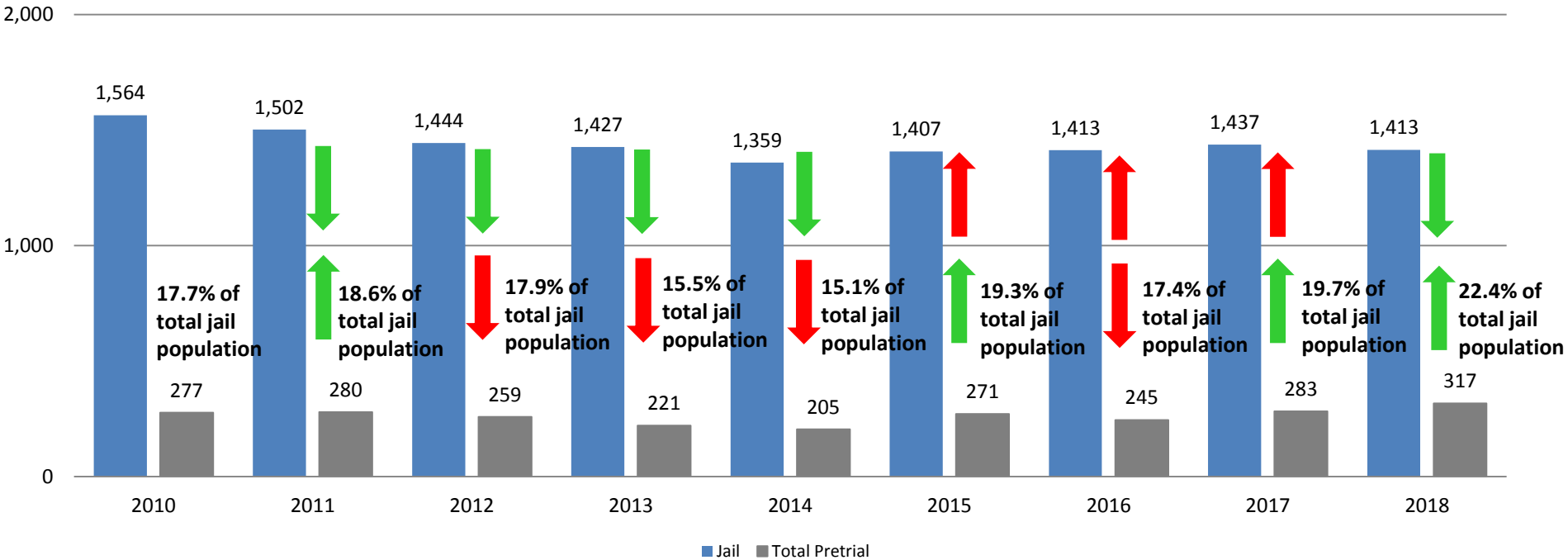
January	2016 ADP	2017 ADP	2018 ADP	2016 YTD Avg.	2017 YTD Avg.	2018 YTD Avg.
Muni. Court	38	40	29	38	40	29
Dist. Court	248	214	288	248	214	288
Total	294	254	317	294	254	317



(data obtained from Pretrial Services)

Correlation: Total & PSP

Total Annual ADP: 2010 - Present

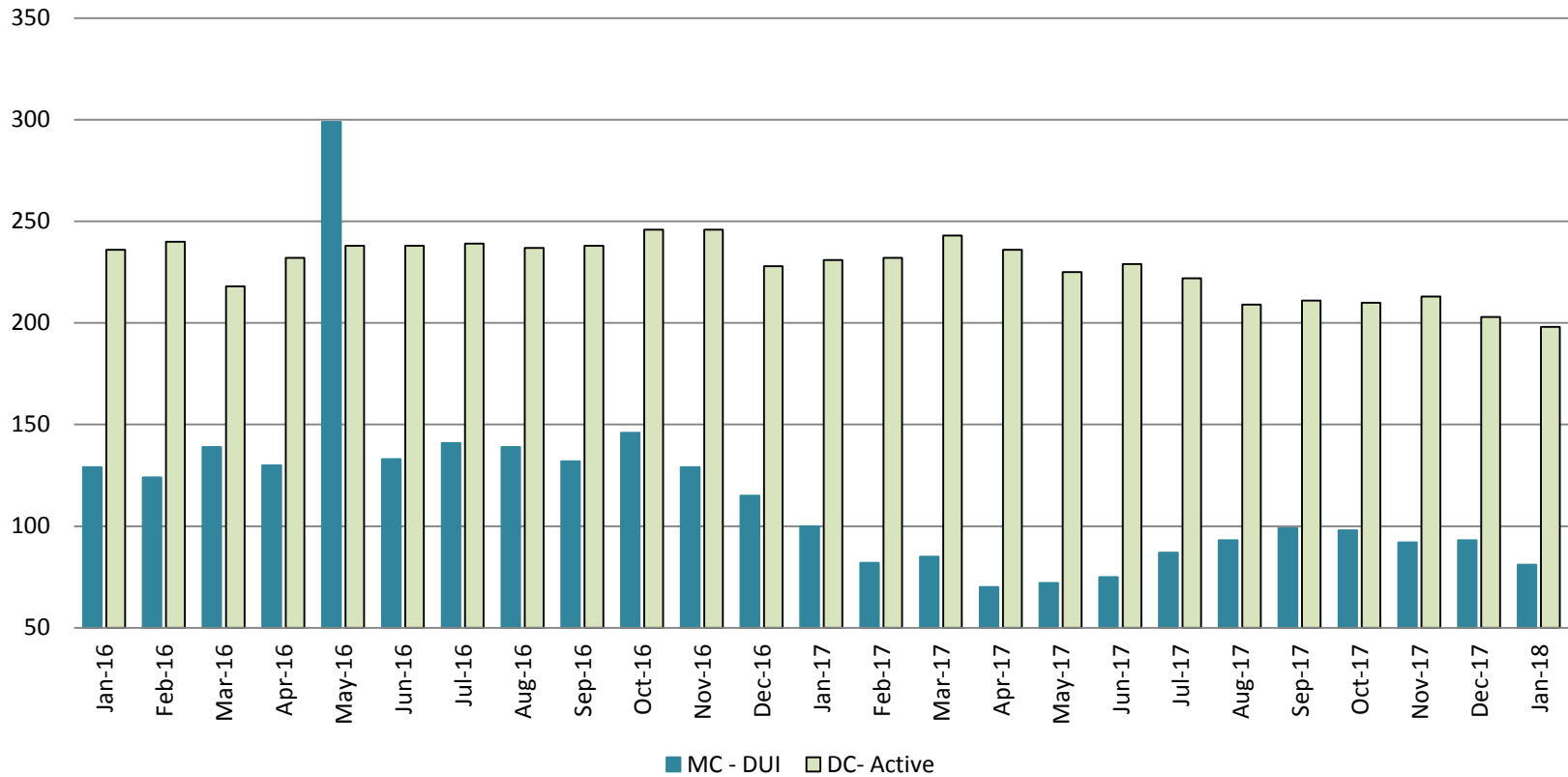


Arrows represent the overall increase/decrease of the population from year to year

Jail includes individuals in booking, detention, work release and out-of county (combined)

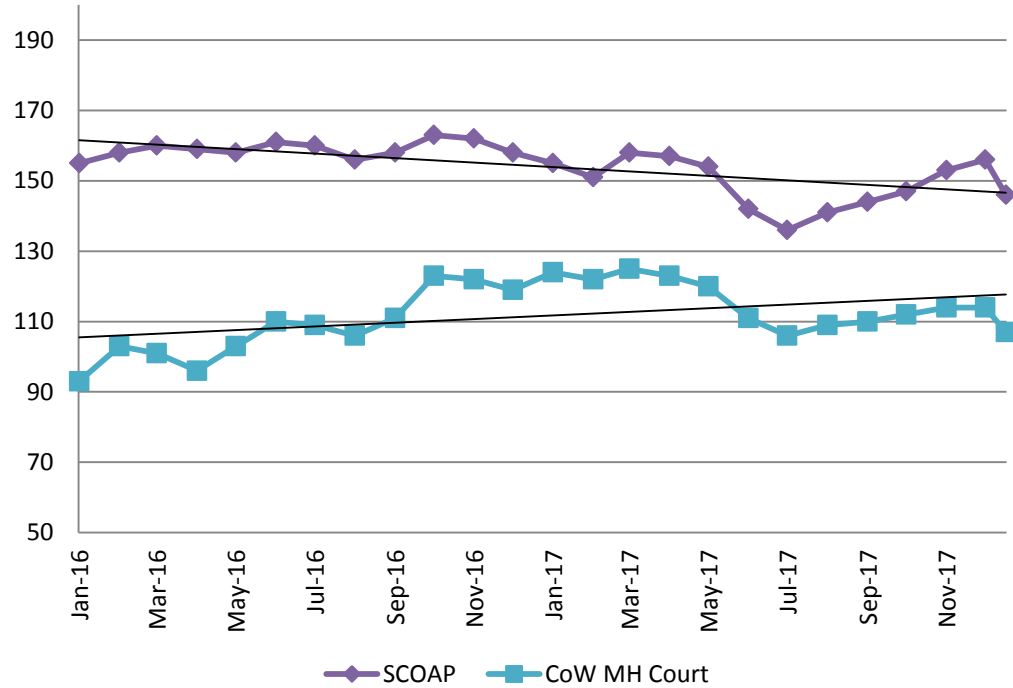
Diversion - Active Caseload

January 2016 - Present

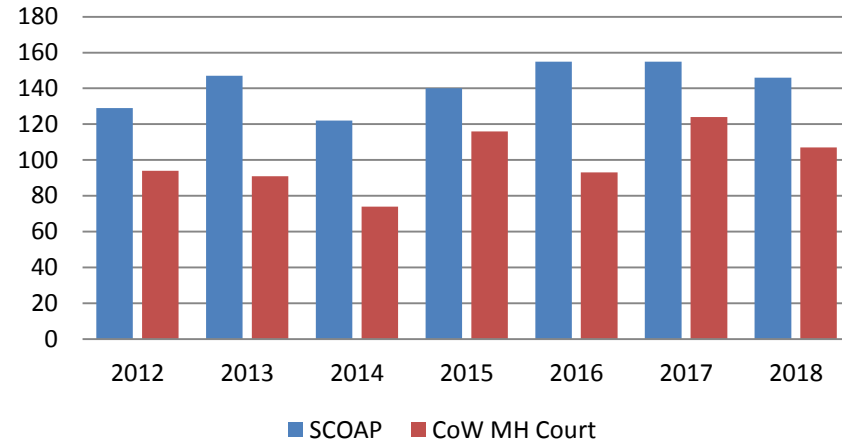


January	2016	2017	2018	2016 YTD Avg.	2017 YTD Avg.	2018 YTD Avg.
Muni. Court- DUI	129	100	81	129	100	81
Dist. Court- Active	236	231	198	236	231	198

Mental Health - ADP January 2016 - present

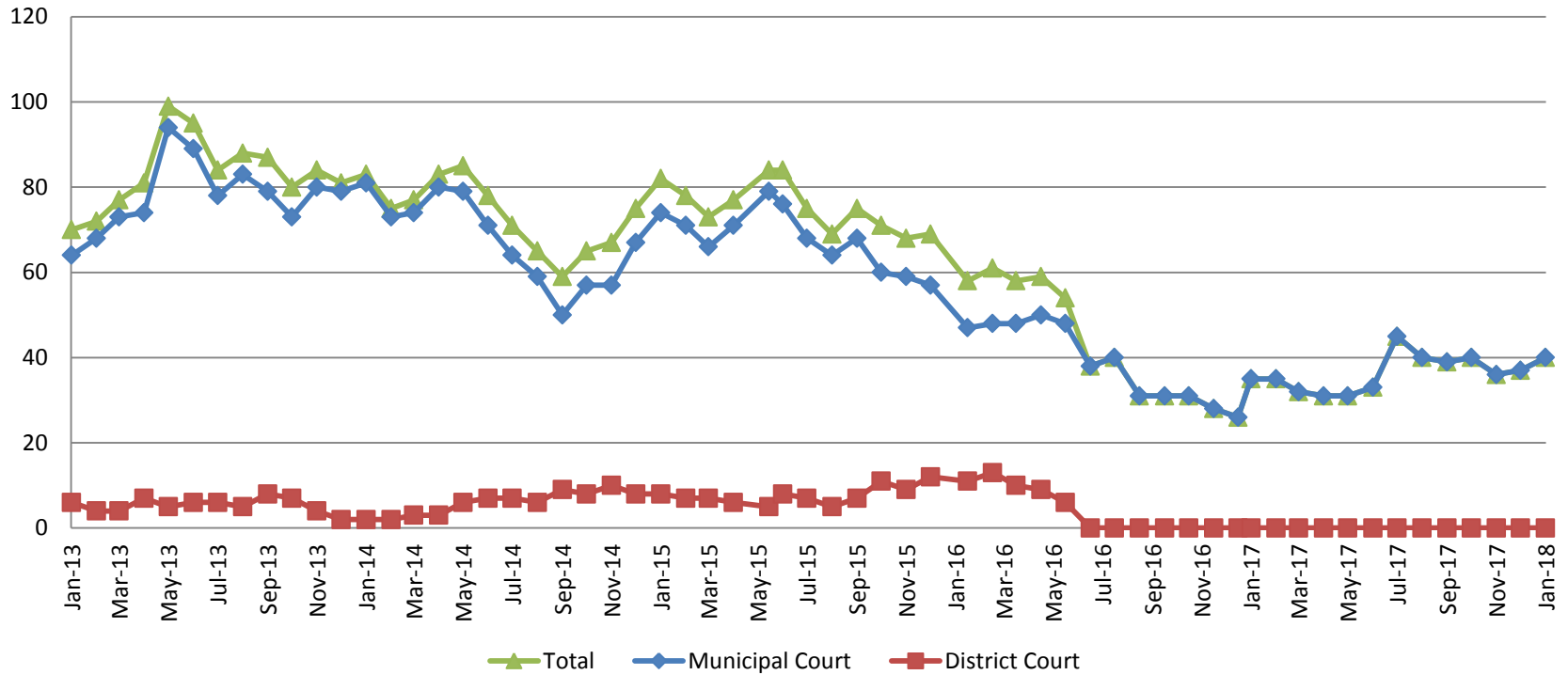


Mental Health ADP Year over Year- January



January	2016 ADP	2017 ADP	2018 ADP	2016 YTD Avg.	2017 YTD Avg.	2018 YTD Avg.
SCOAP	155	155	146	155	155	146
MH Court	93	124	107	93	124	107

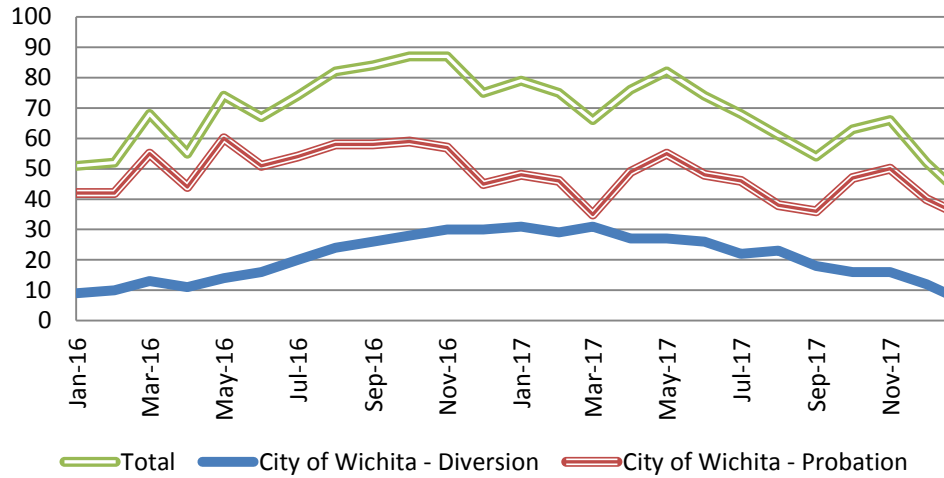
Day Reporting - Active Caseload 2013-present



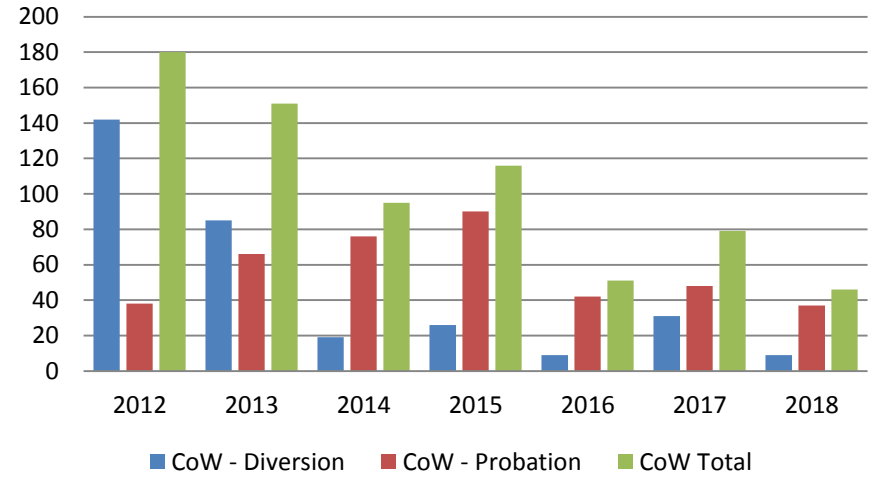
	2013	2014	2015	2016	2017	2018
Muni. Court	64	81	74	47	35	40
Muni. Court YTD Avg.	64	81	74	47	35	40



Drug Court - City of Wichita ADP: January 2016- present



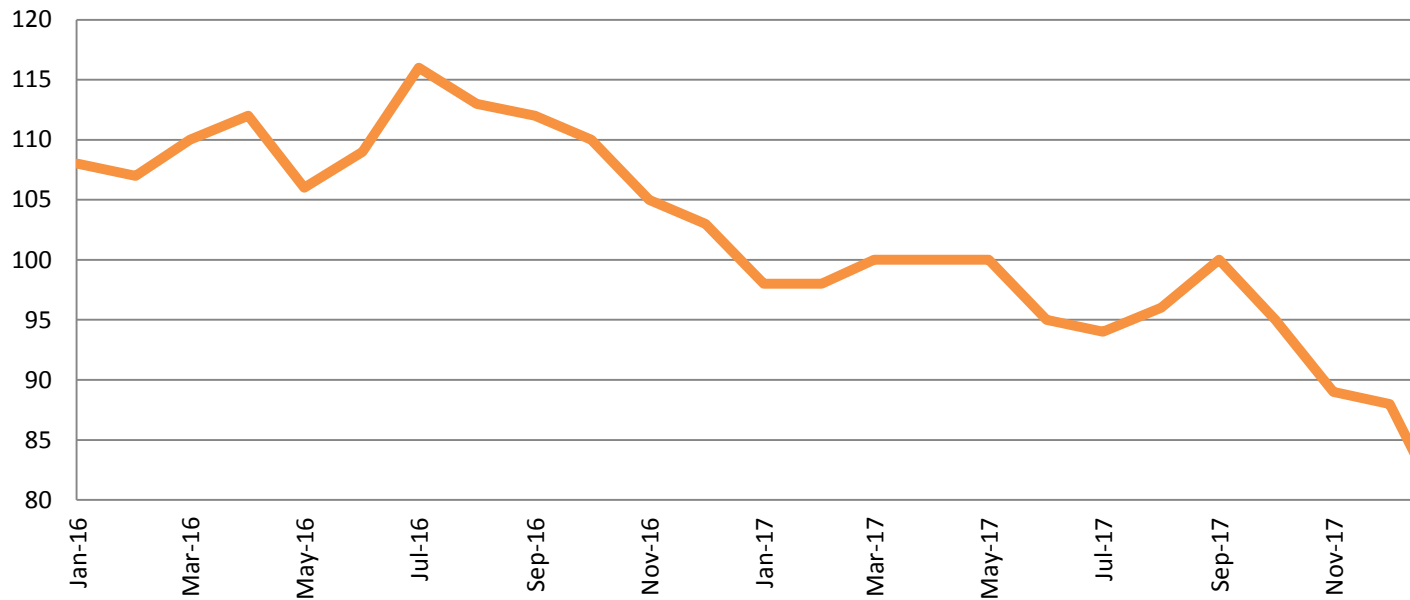
Drug Court- City of Wichita Year over Year- January



January	2016	2017	2018
Diversion	9	31	9
Probation	42	48	37
Total	51	79	46



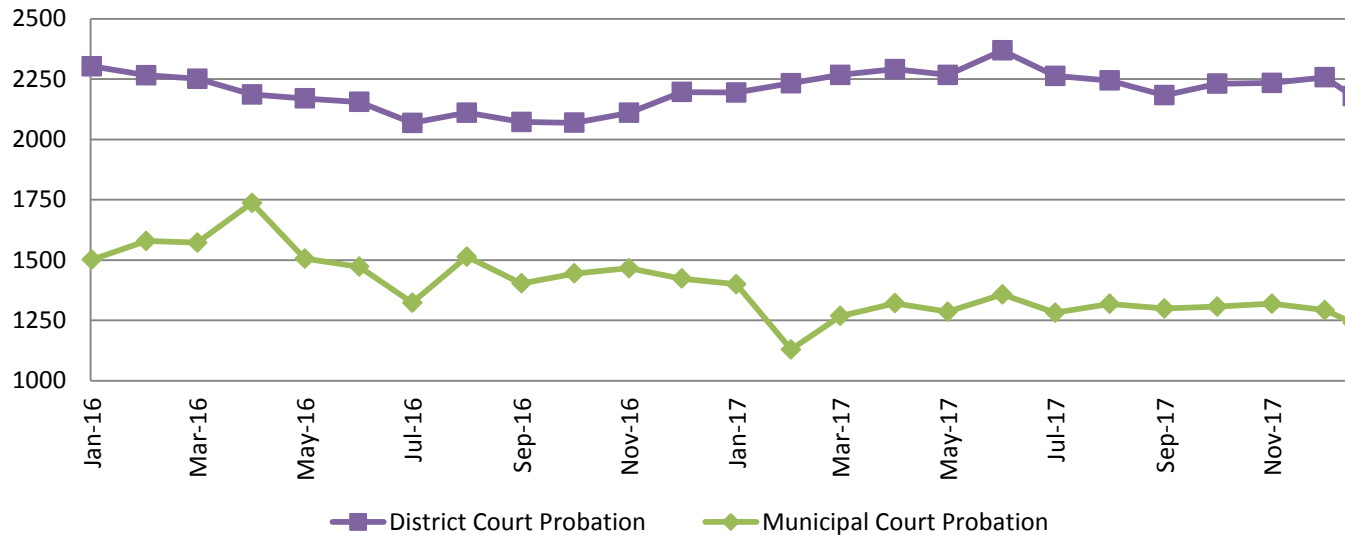
Drug Court - Sedgwick County ADP: January 2016 - present



	January	2016	2017	2018
Sedg. Co. ADP		108	98	83
YTD Avg.		108	98	83

(data obtained from Pretrial Services)

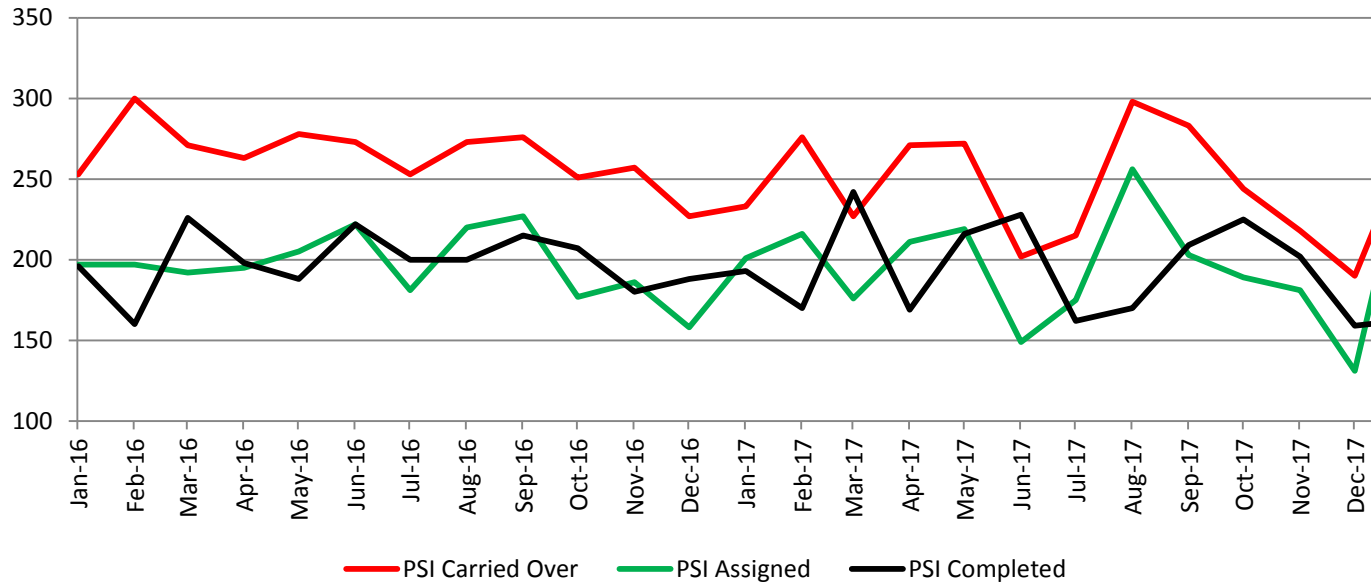
Probation - Active Caseloads January 2016 - present



January	2016	2017	2018	2016 YTD Avg.	2017 YTD Avg.	2018 YTD Avg.
Dist. Court Probation	2303	2194	2179	2303	2194	2179
Muni. Court Probation	1501	1400	1239	1501	1400	1239



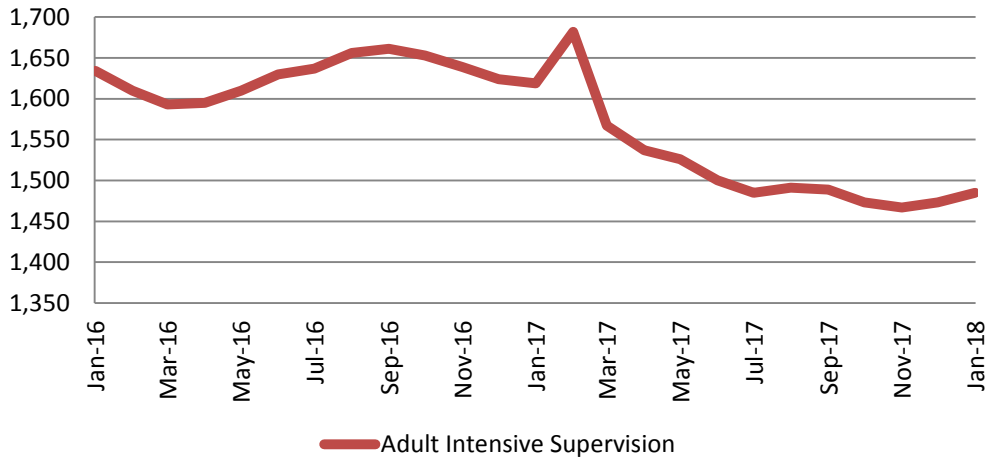
District Court Probation: Pre-Sentence Investigation January 2016 - present



January	2016	2017	2018
Carried Over	253	233	234
Assigned	197	201	208
Completed	196	193	161

Community Corrections

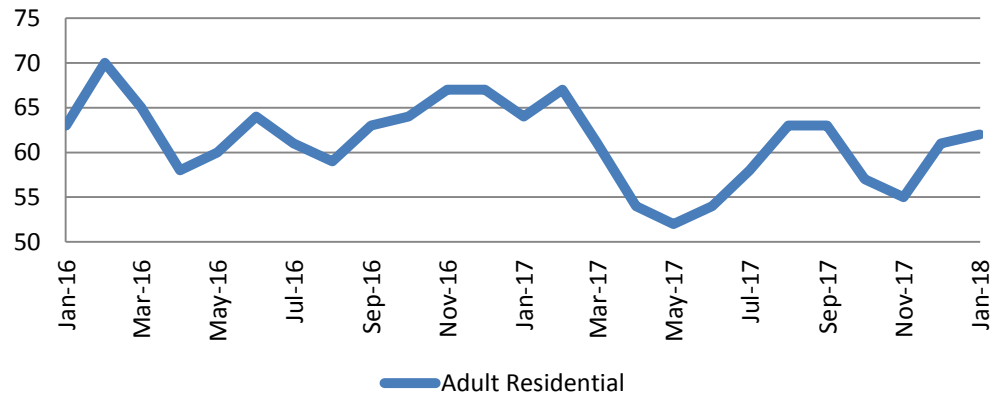
**Adult Intensive Supervision Probation (AISP) ADP
January 2016- present**



Year	January	January YTD Avg.
2016	1,634	1,634
2017	1,619	1,619
2018	1,485	1,485

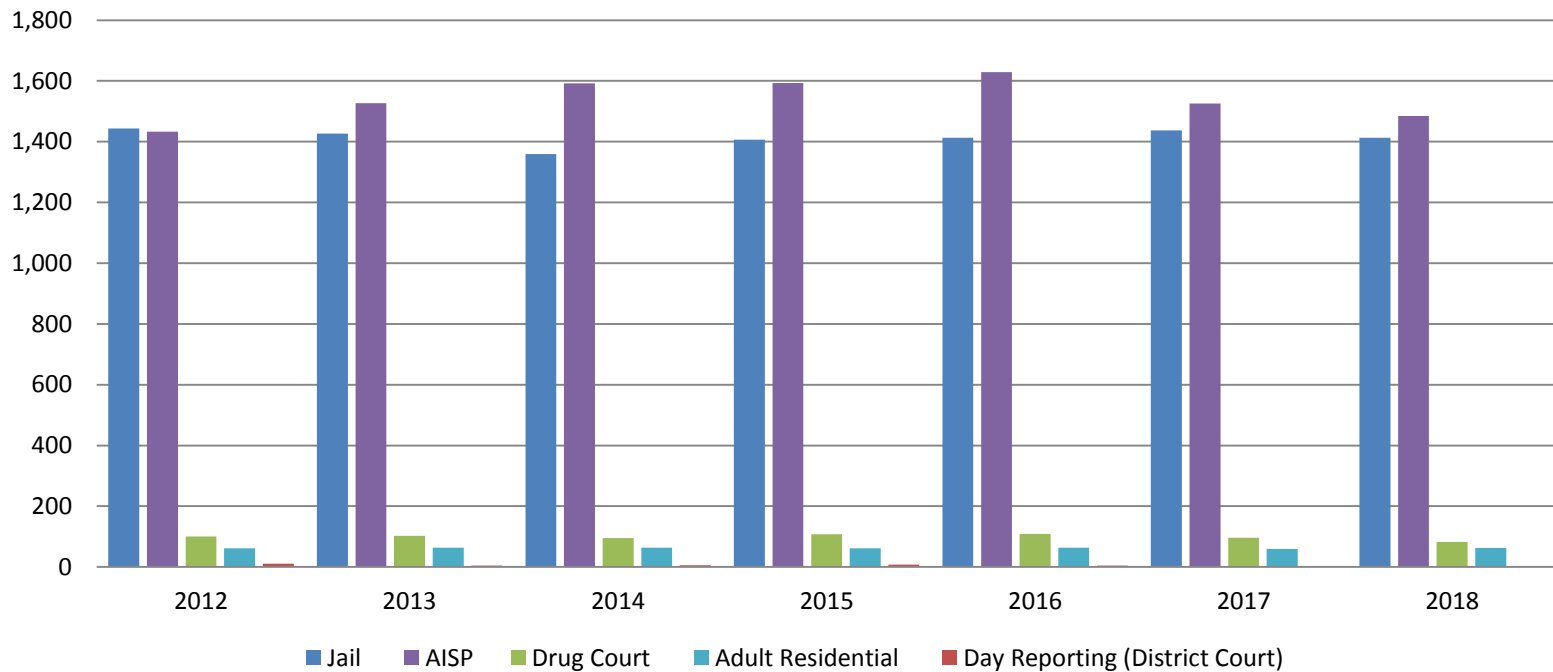
Year	January	January YTD Avg.
2016	63	63
2017	64	64
2018	62	62

**Adult Residential: ADP
January 2016- present**



Correlation: Total & Sedgwick County Programs (Adult)

Total Annual ADP 2012-Present



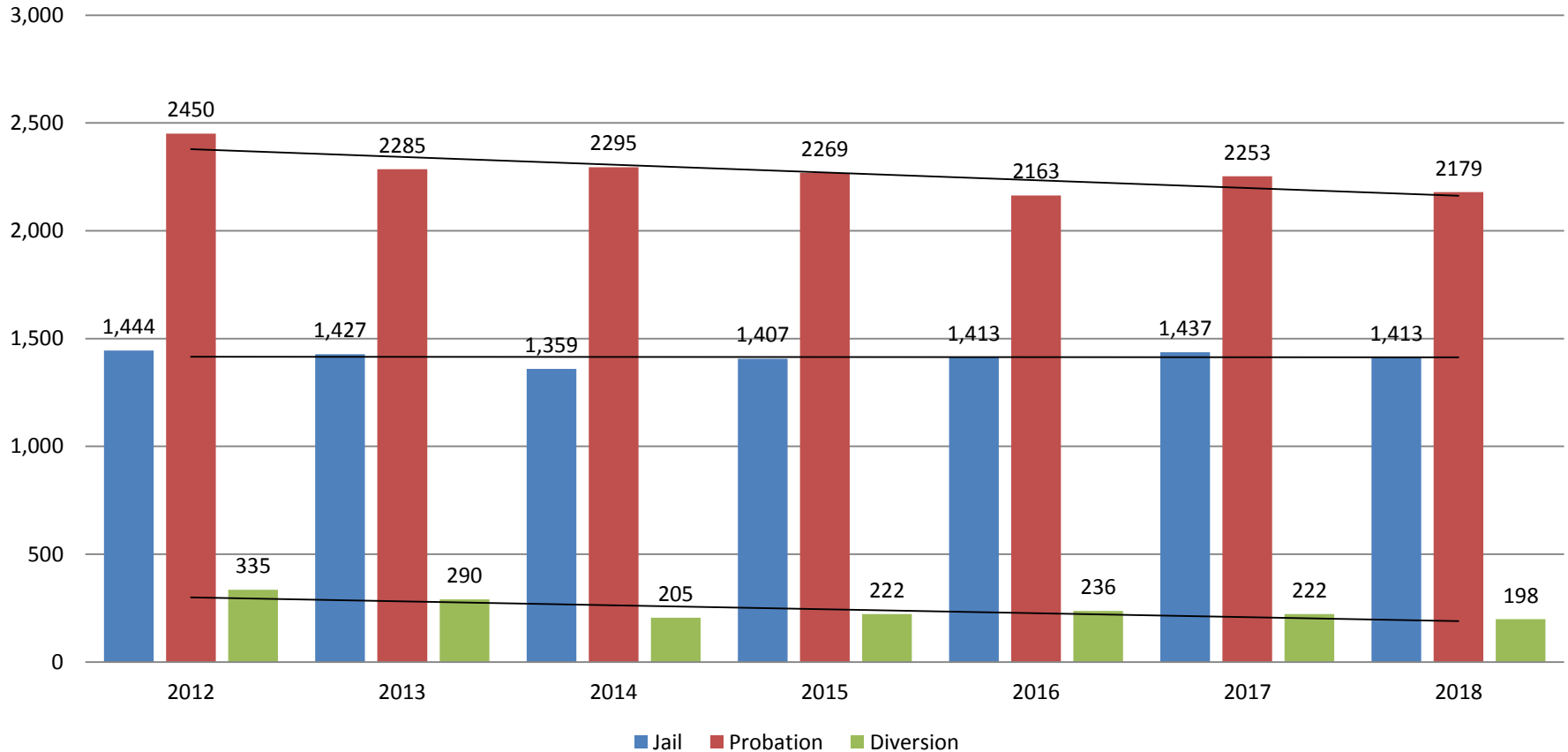
	2016	2017	2018
Jail	1,413	1,437	1,413
AISP	1,629	1,526	1,485
Drug Court	109	96	83
Adult Residential	63	59	62
Day Reporting (DC)	0	0	0



Jail includes individuals in booking, detention, work release and out-of county (combined)
 Sedgwick County... working for you (data obtained from detention facility, SG Dept. of Corrections, Pretrial Services, & CoW)

Correlation: Total & District Court Programs

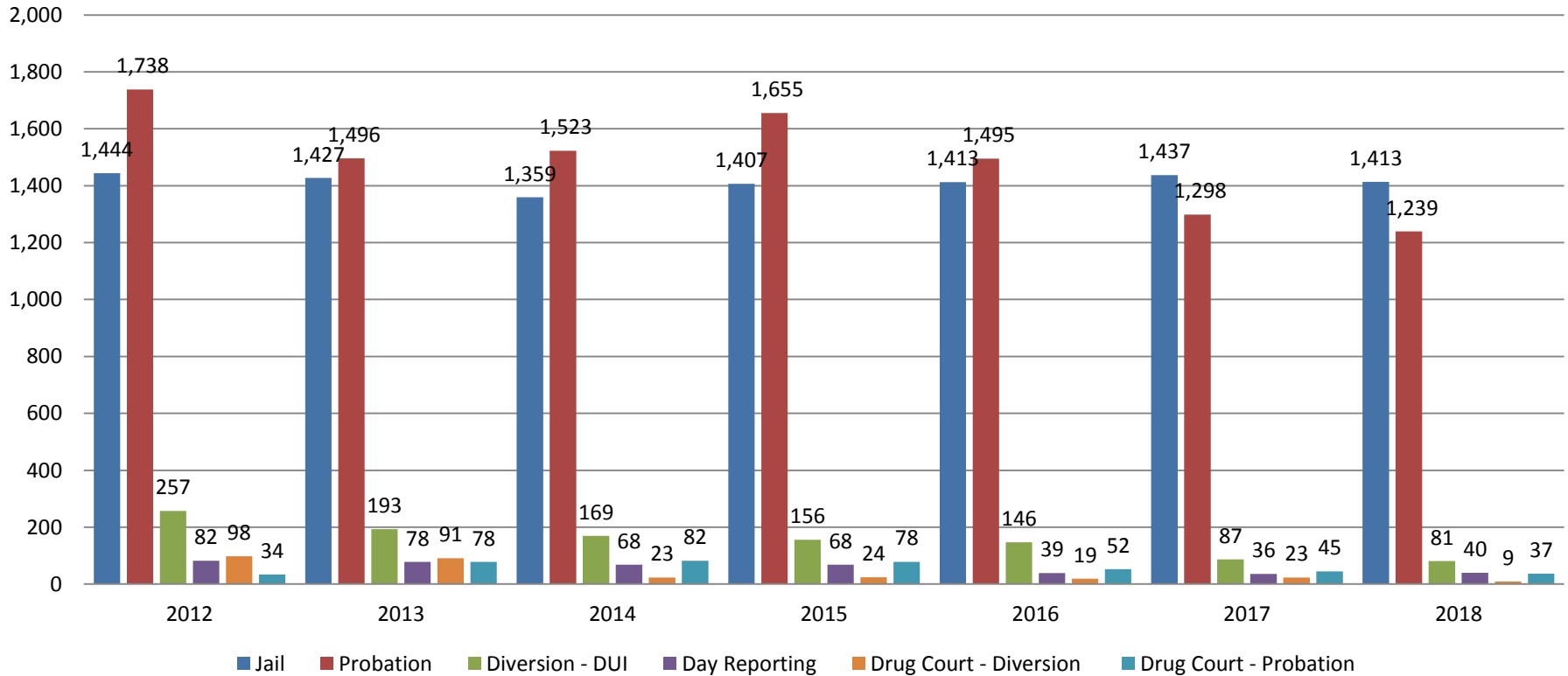
Total Annual ADP: 2012 - Present



Jail includes individuals in booking, detention, work release and out-of county (combined)

Correlation: Total & City of Wichita / Municipal Court Programs

Total Annual ADP: 2012 - present

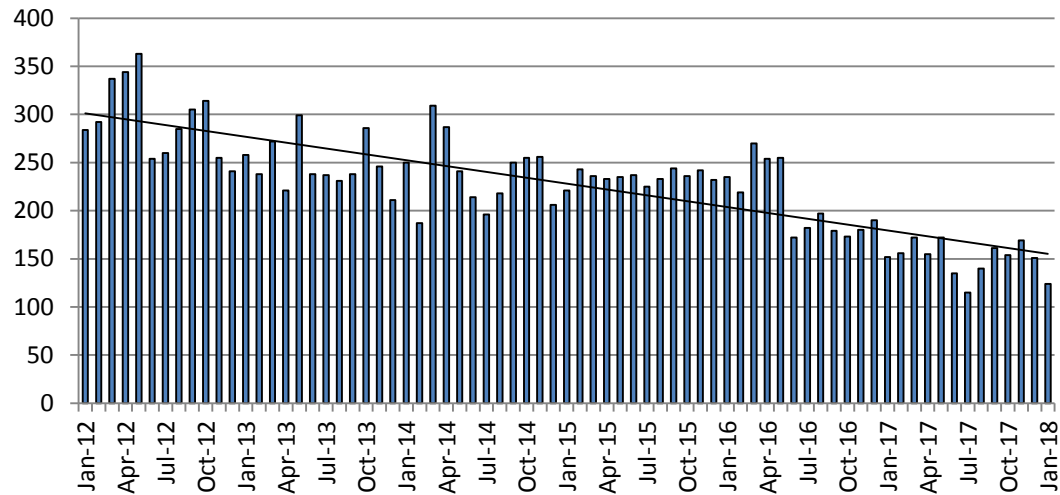


Jail includes individuals in booking, detention, work release and out-of county (combined)



Juvenile

JIAC Intakes: 2012 - present

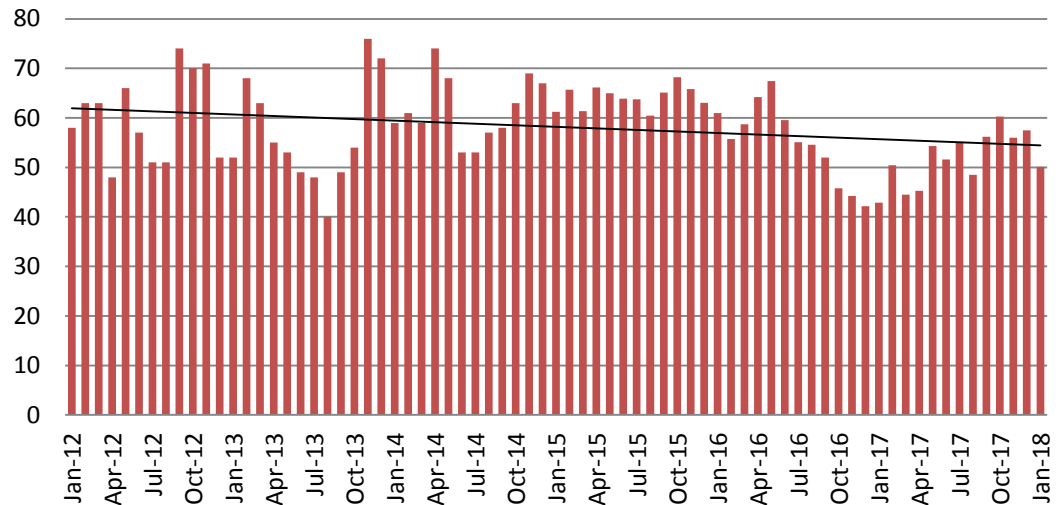


Year	January	Jan. YTD Avg.
2013	258	258
2014	250	250
2015	221	221
2016	235	235
2017	152	152
2018	124	124

Year January Jan. YTD Avg.

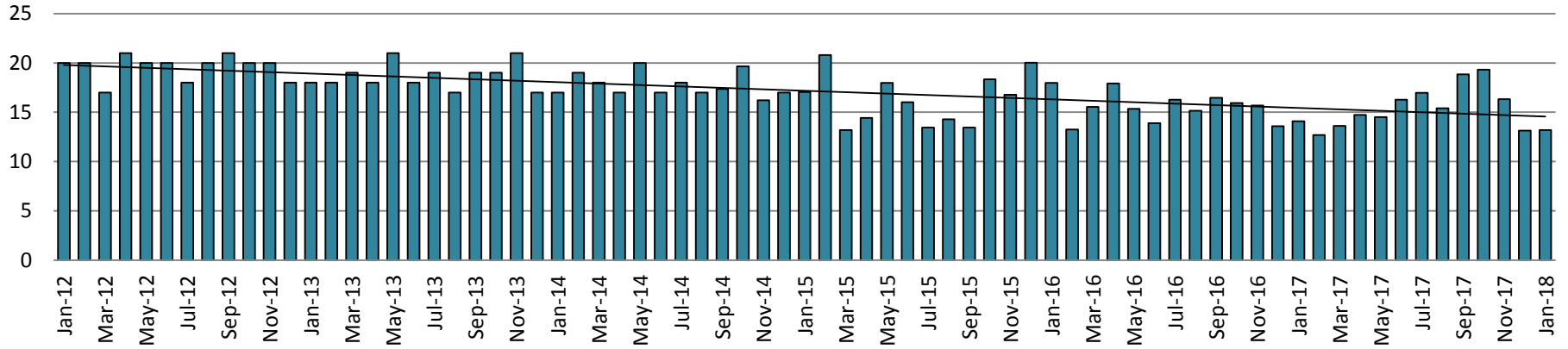
2013	52	52
2014	59	59
2015	61	61
2016	61	61
2017	43	43
2018	50	50

JDF ADP: 2012 - present

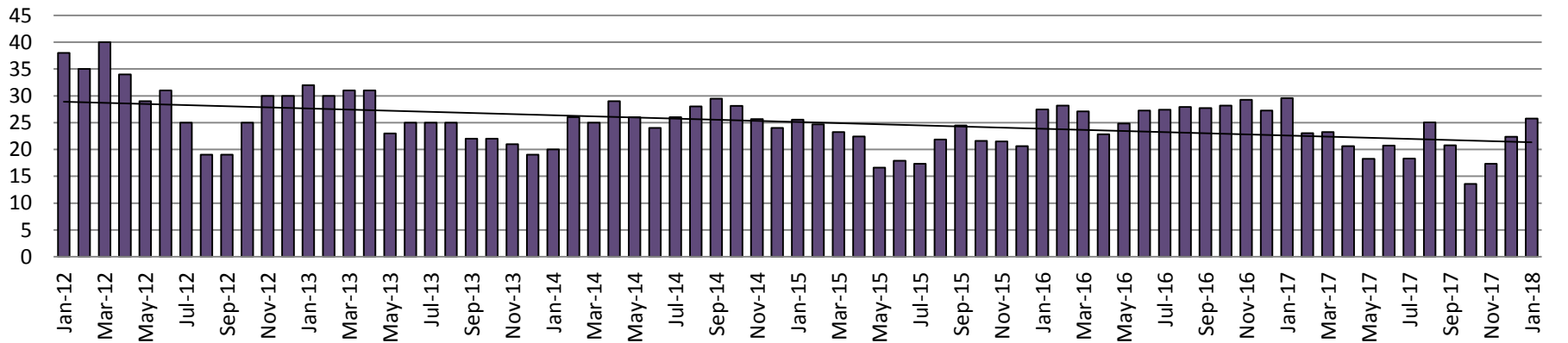


Juvenile Detention Alternatives

Juvenile Residential Facility (JRF) ADP: 2012 - present

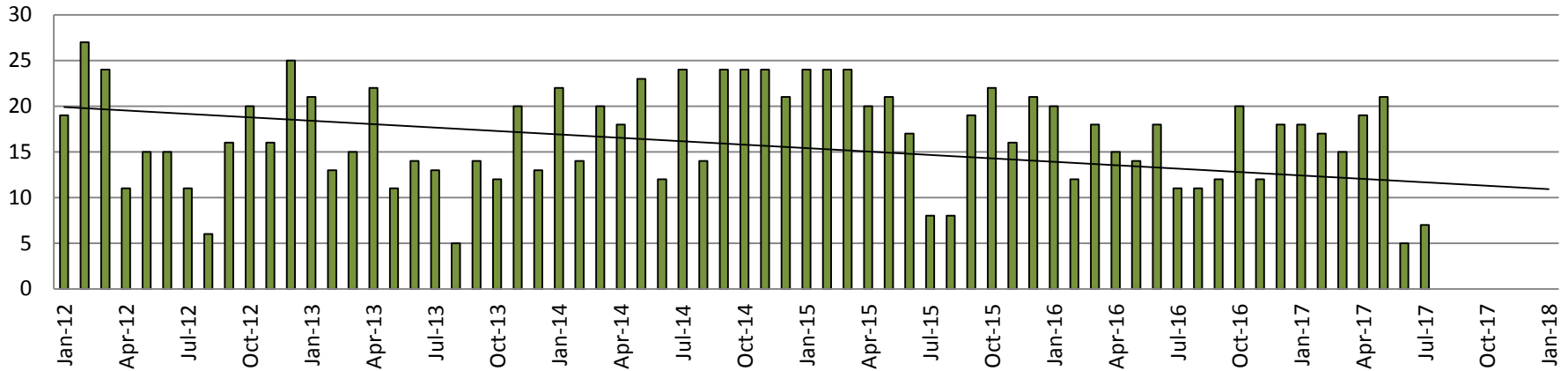


Home-Based Supervision ADP: 2012 - present

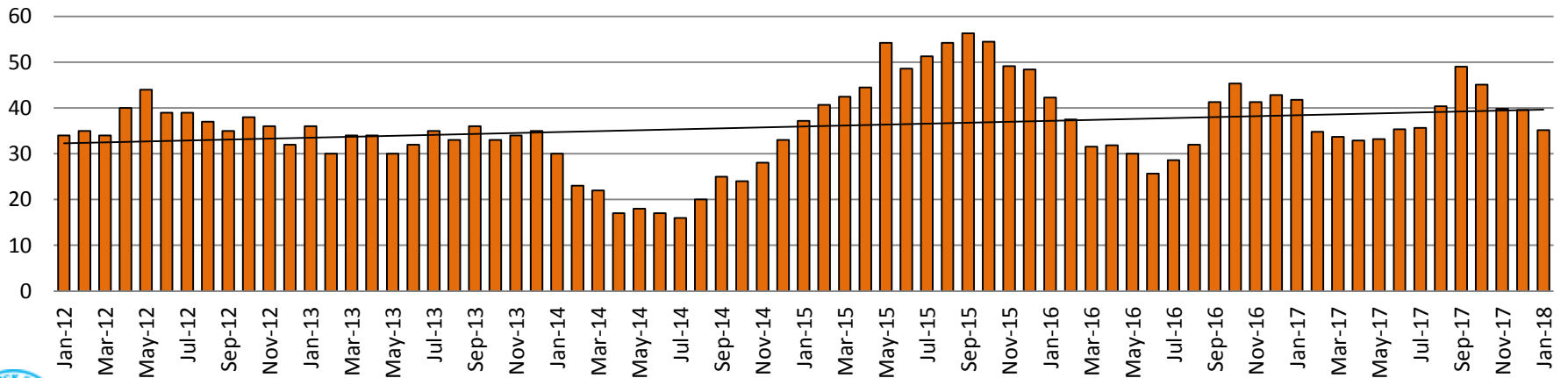


Juvenile Detention Alternatives

Weekend Alternative Detention Program 2012 - present



Detention Advocacy Case Management Services ADP: 2012 - present



Juvenile Detention Services

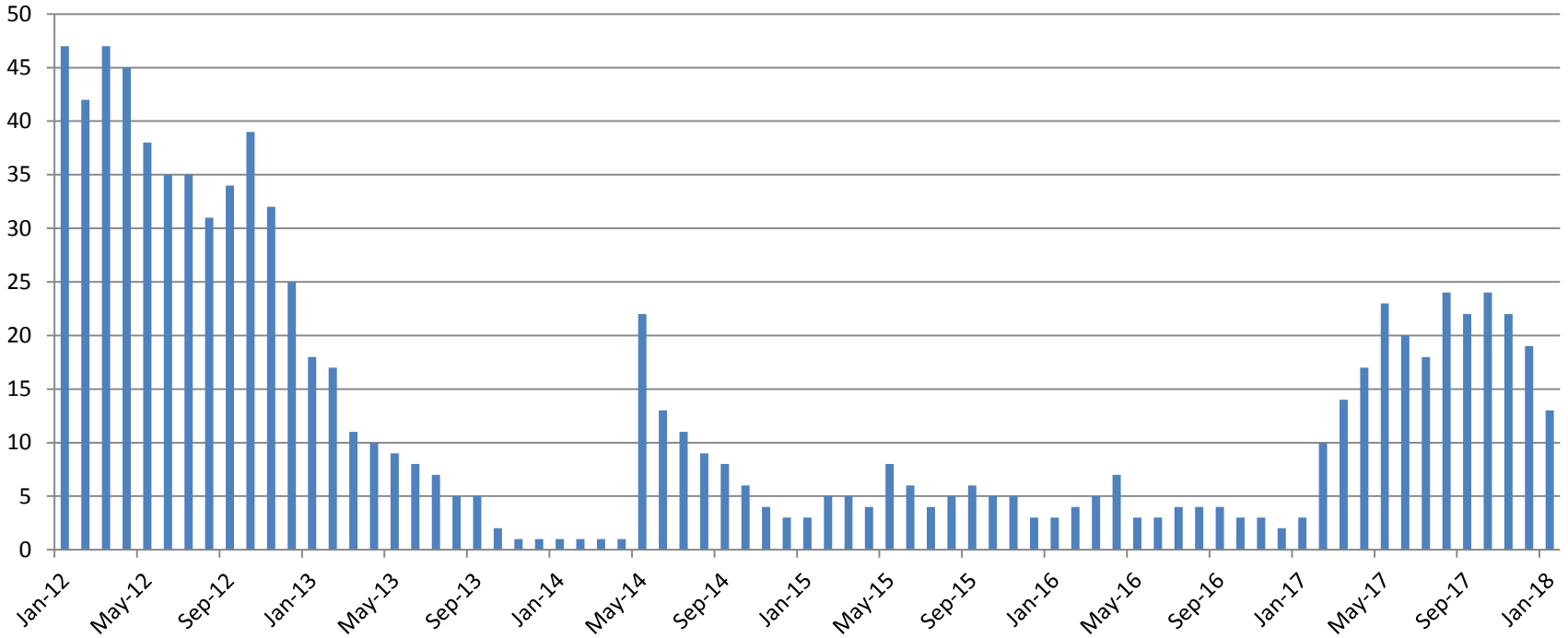
January ADP	2015	2016	2017	2018
Juvenile Detention Facility	61	61	43	50
Juvenile Residential Facility	17	18	14	13
Home Based Supervision	26	27	30	26
Detention Advocacy Case Management Services	37	42	42	35
Weekend Alternative Detention Program (total)	24	20	18	0

January YTD AVERAGE	2015	2016	2017	2018
Juvenile Detention Facility	61	61	43	50
Juvenile Residential Facility	17	18	14	13
Home Based Supervision	26	27	30	26
Detention Advocacy Case Management Services	37	42	42	35
Weekend Alternative Detention Program	24	20	18	0



Monthly Jail Snapshot: January 31, 2018

BICE Holds 2012-Present

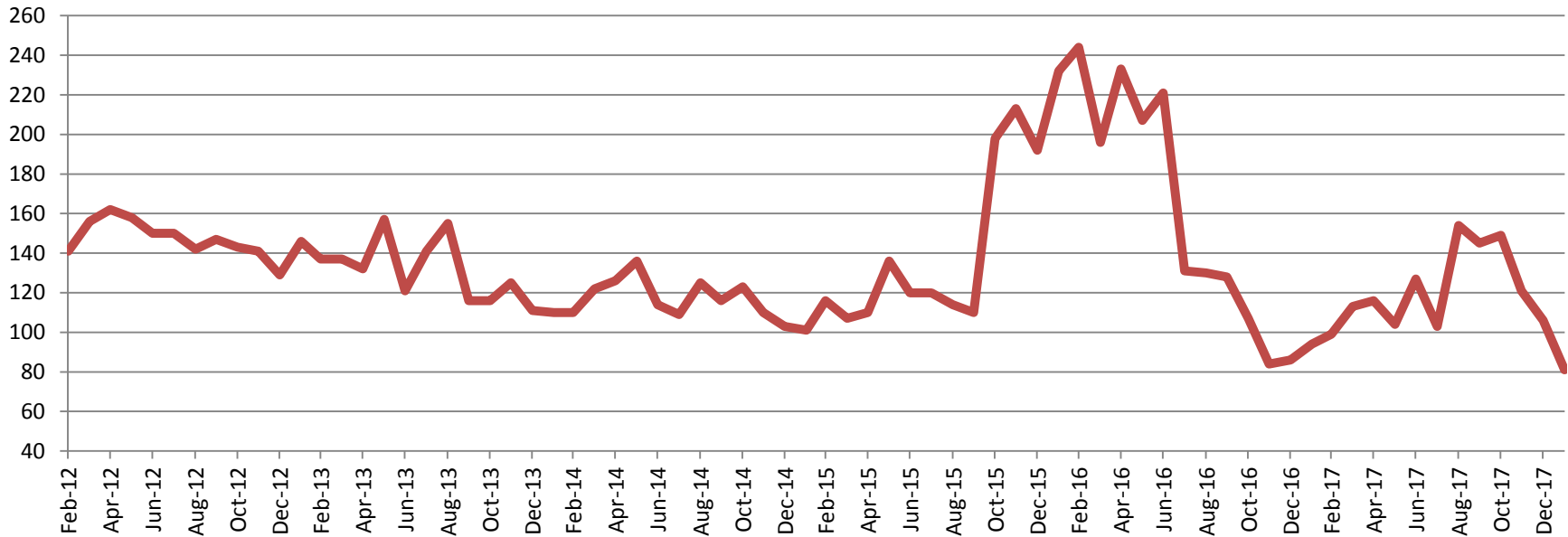


2013	2014	2015	2016	2017	2018
18	1	3	3	3	13



Monthly Jail Snapshot: January 31, 2018

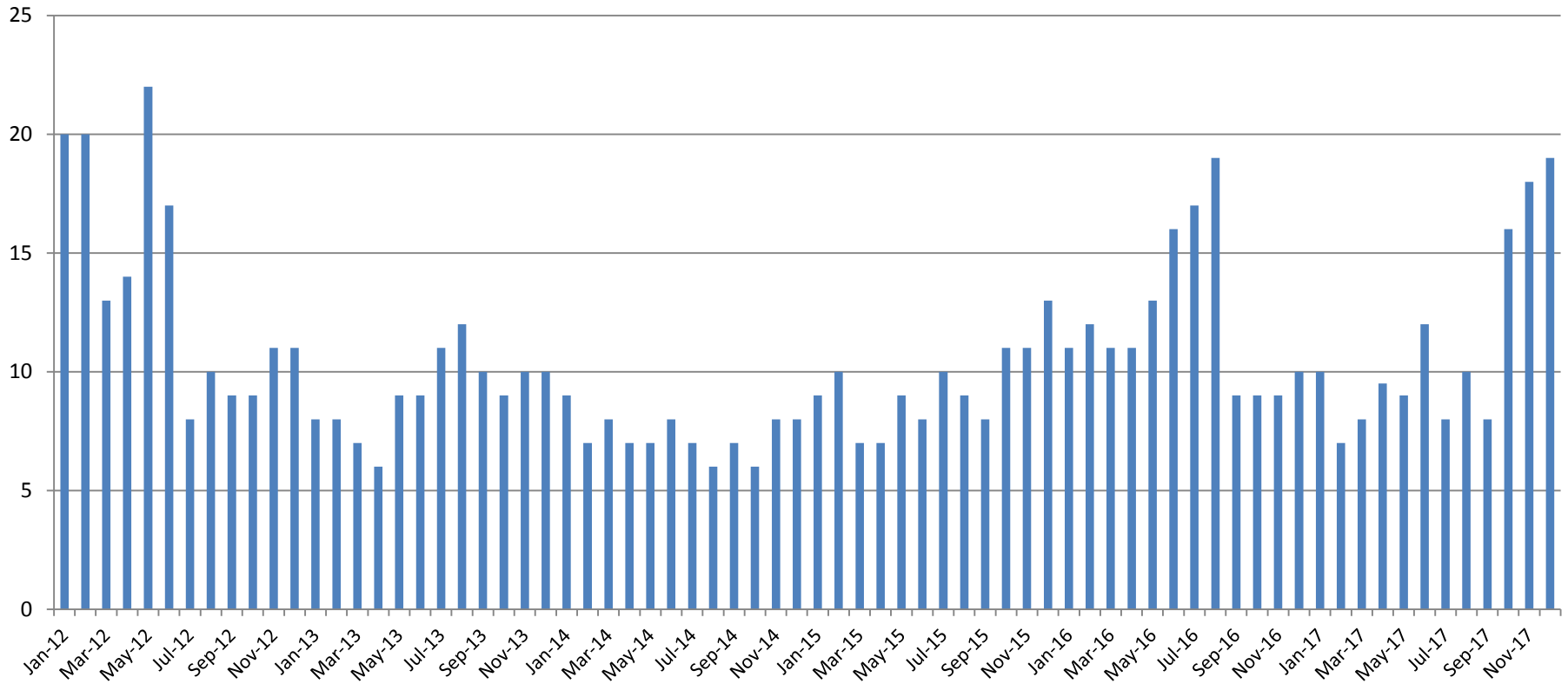
Felony Commitments: February 2012 - present



2013	2014	2015	2016	2017	2018
146	110	101	232	94	81



Journal Entry Completion (Average Days) January 2013-Present



Dec.	2013	2014	2015	2016	2017	2018
Avg. Days	8	9	9	11	10	-
YTD Avg.	8	9	9	11	10	-

