

Criminal Justice Coordinating Council

Population Report & Program Trends

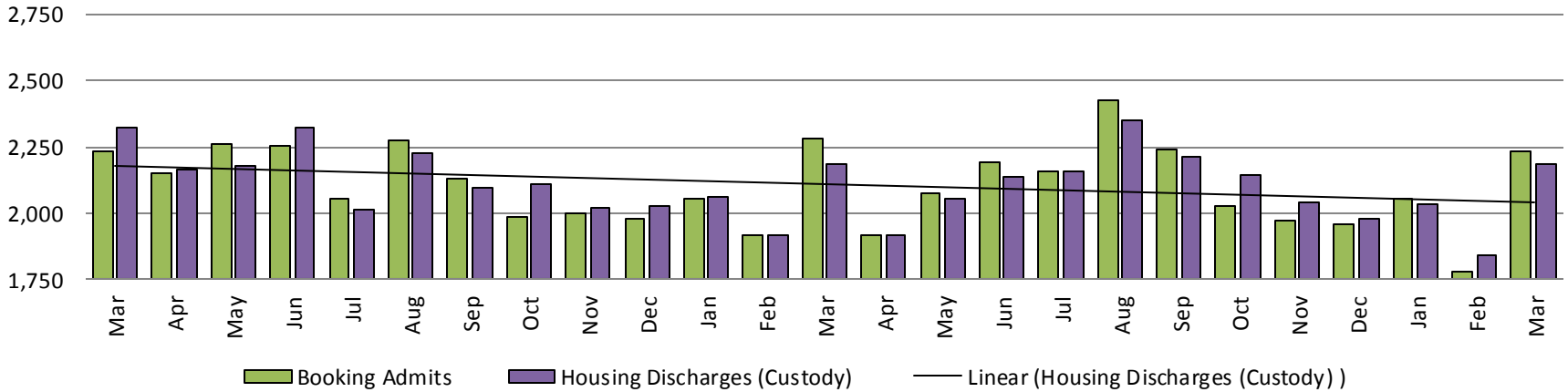
April 2018



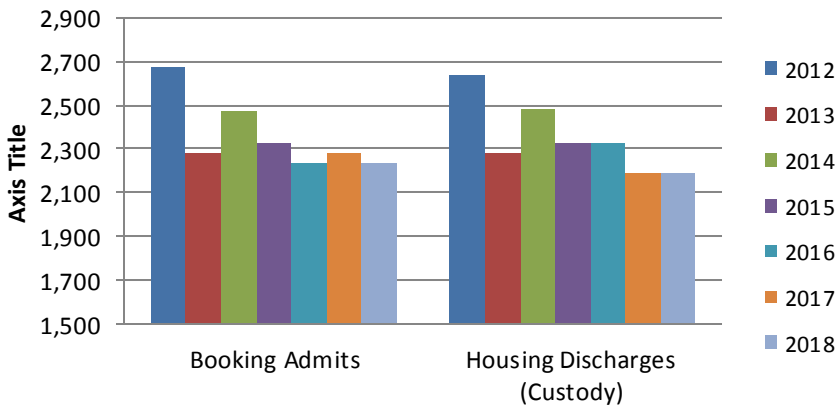
Sedgwick County...
working for you

Detention Facility

Booking Admits & Housing Discharges from Custody March 2016-Present



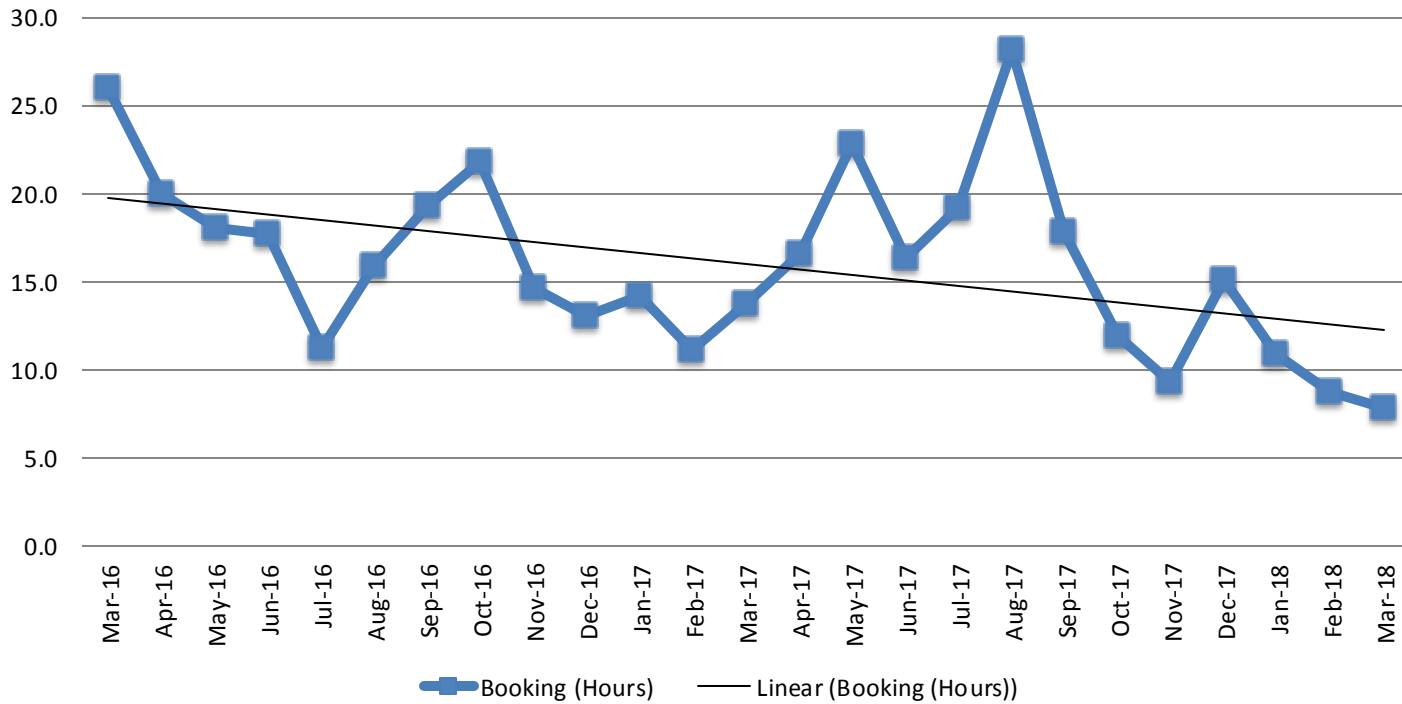
Bookings Year over Year: Month of March



Bookings March	Housing Discharges March
2016: 2,236	2016: 2,324
2017: 2,282	2017: 2,189
2018: 2,236	2018: 2,187

(data obtained from detention facility)

Average Length of Stay: Booking (Hours) March 2016 - Present

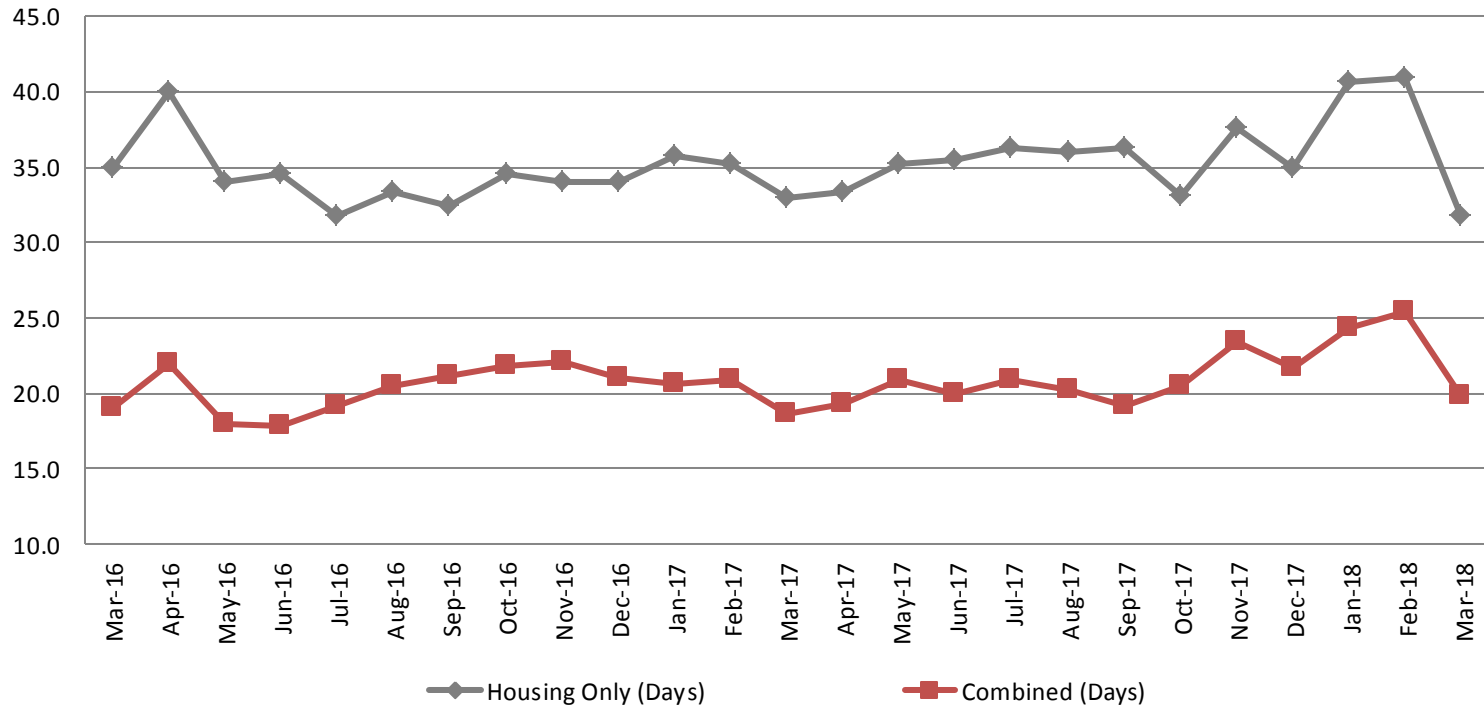


March		March YTD Average	
2016:	26.0	2016:	22.3
2017:	13.7	2017:	13.0
2018:	7.8	2018:	9.2



Average Length of Stay: Housing & Combined (Days)

March 2016 - Present

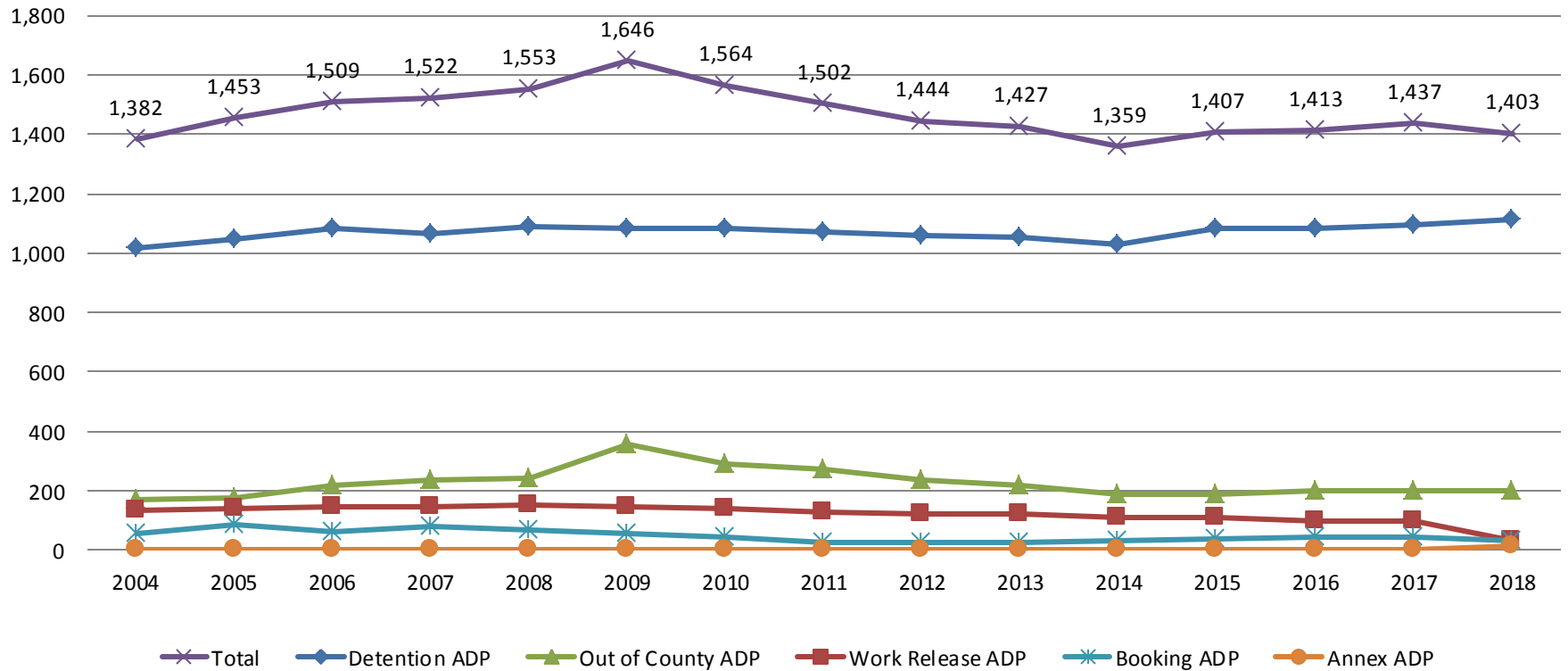


Month, Year	Housing Only	Housing YTD AVG	Combined Days	Combined YTD AVG
March 2016	35.0	36.3	19.0	18.7
March 2017	32.9	34.6	18.6	20.0
March 2018	31.8	37.8	19.8	23.2

(data obtained from detention facility)

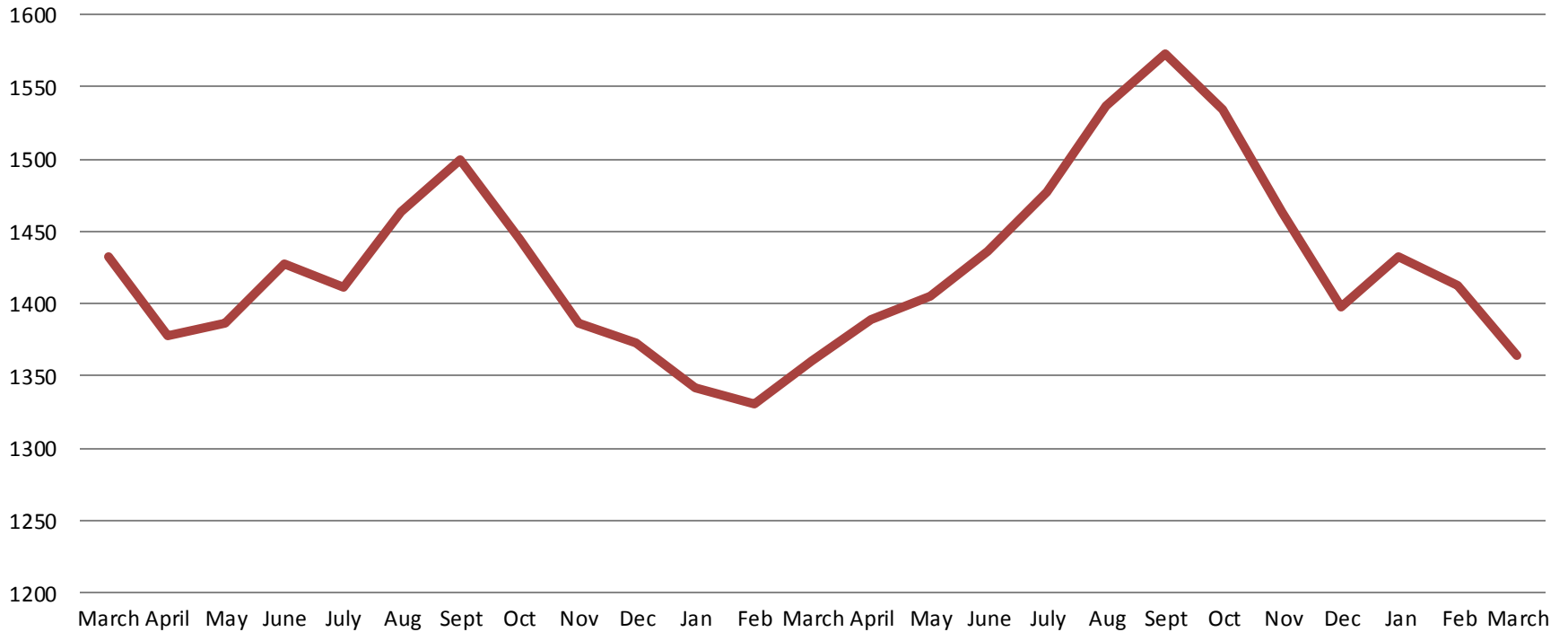
Jail: Annual Average Daily Population (ADP)

TRENDS: Booking, Detention, Work Release, & Out of County
Annual ADP: 2004 - present



*Beginning January 2018, Work Release program began transfer to Division of Corrections

TOTAL MONTHLY ADP: JAIL (Booking, Detention Facility, Work Release, & Out of County) March 2016 - present



March 2016	March 2017	March 2018
1,433	1,360	1,364

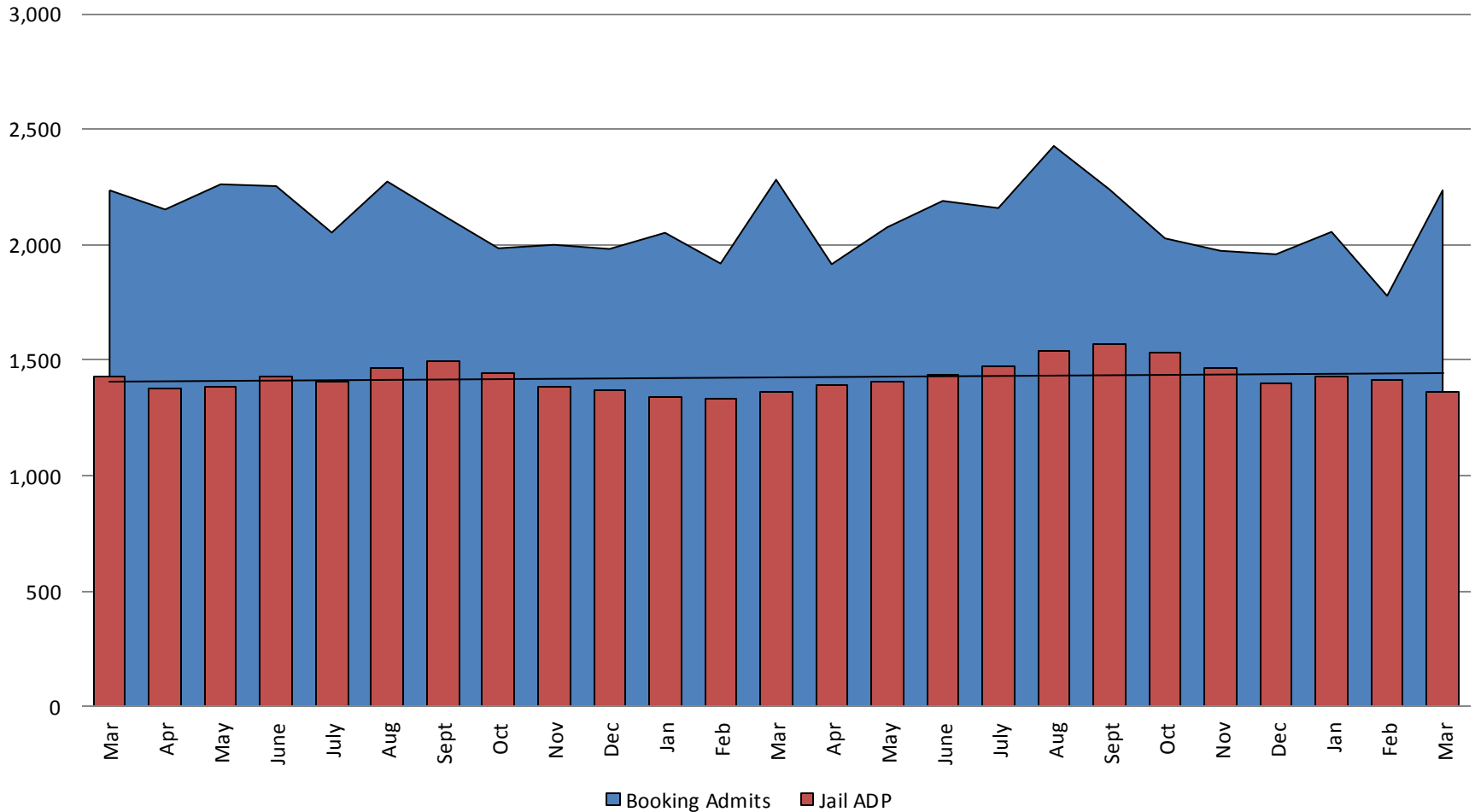
*Beginning January 2018, Work Release program began transfer to Division of Corrections

This slide shows total monthly ADP for individuals in booking, detention, work release, jail annex, and out-of county (combined)

(data obtained from detention facility)



Booking Admits & Total Monthly ADP (Jail): March 2016 - present



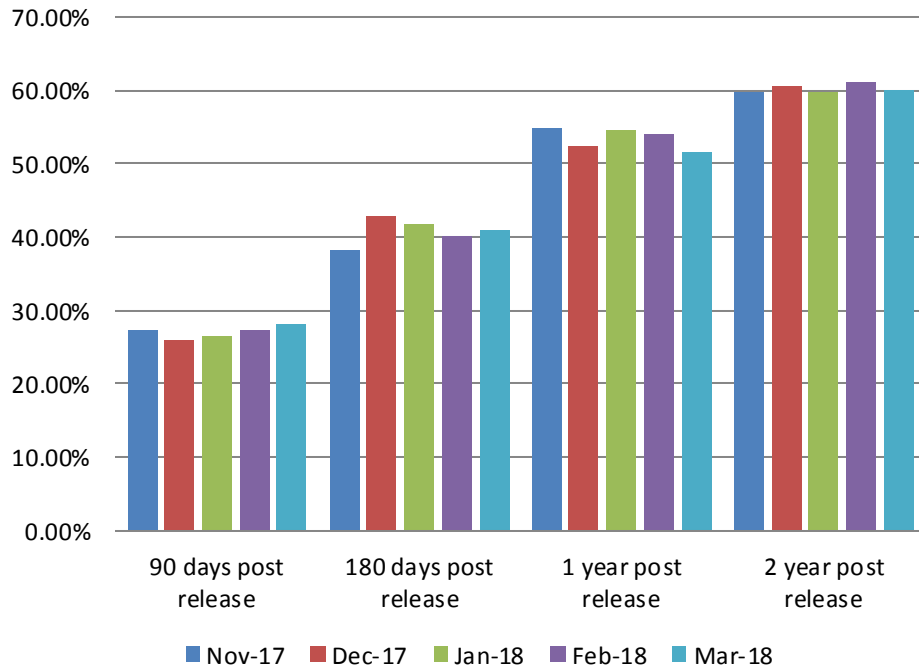
Jail includes individuals in booking, detention, work release and out-of county (combined)

(data obtained from detention facility)



Sedgwick County...
working for you

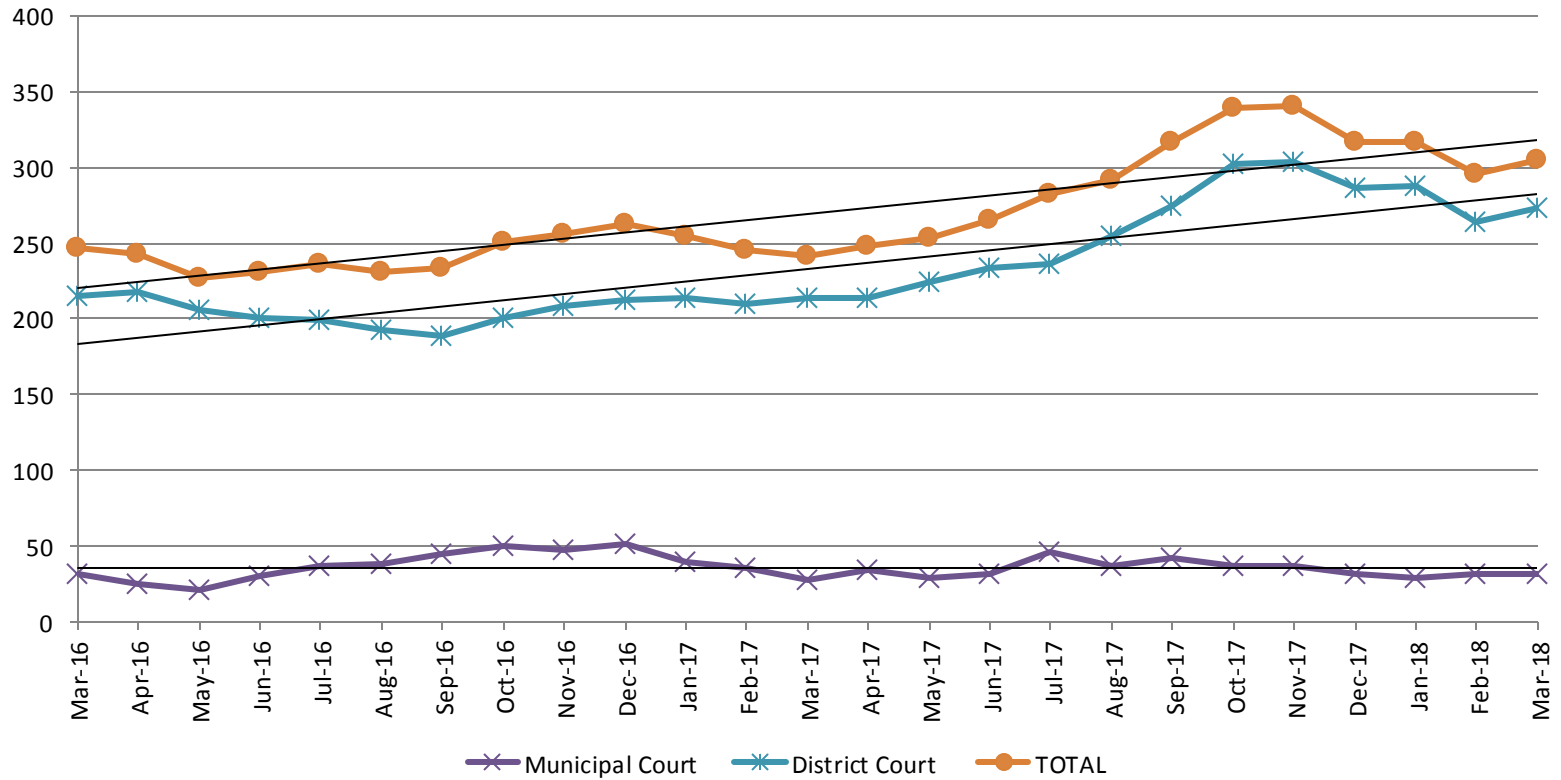
Percent of released inmates rearrested



Month Year	90 Days	180 Days	1 Year	2 Years
Nov 2017	27.25%	38.27%	54.81%	59.64%
Dec 2017	25.85%	42.72%	52.28%	60.64%
Jan 2018	26.55%	41.67%	54.57%	59.84%
Feb 2018	27.39%	40.22%	54.02%	61.03%
March 2018	28.00%	41.08%	51.69%	60.03%



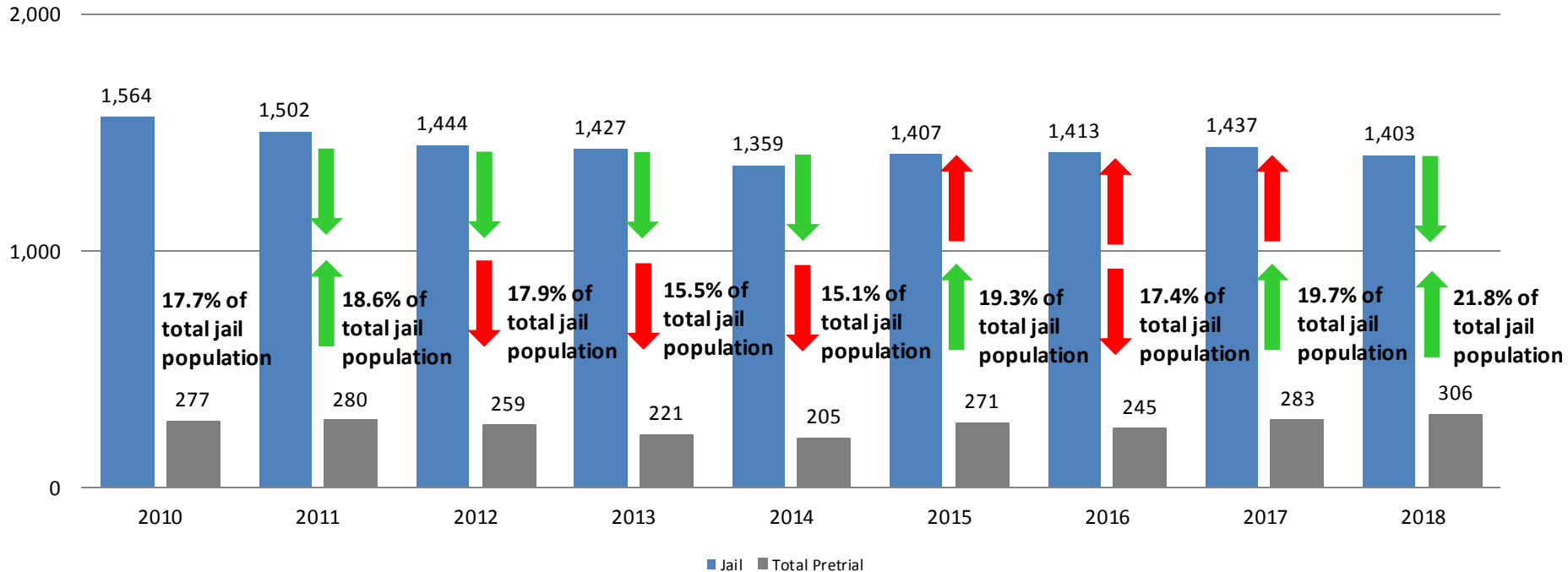
Pretrial Services Program (PSP) Monthly ADP: March 2016 - Present



March	2016 ADP	2017 ADP	2018 ADP	2016 YTD Avg.	2017 YTD Avg.	2018 YTD Avg.
Muni. Court	32	28	32	35	35	31
Dist. Court	215	214	273	219	213	275
Total	247	254	305	257	254	306

Correlation: Total & PSP

Total Annual ADP: 2010 - Present



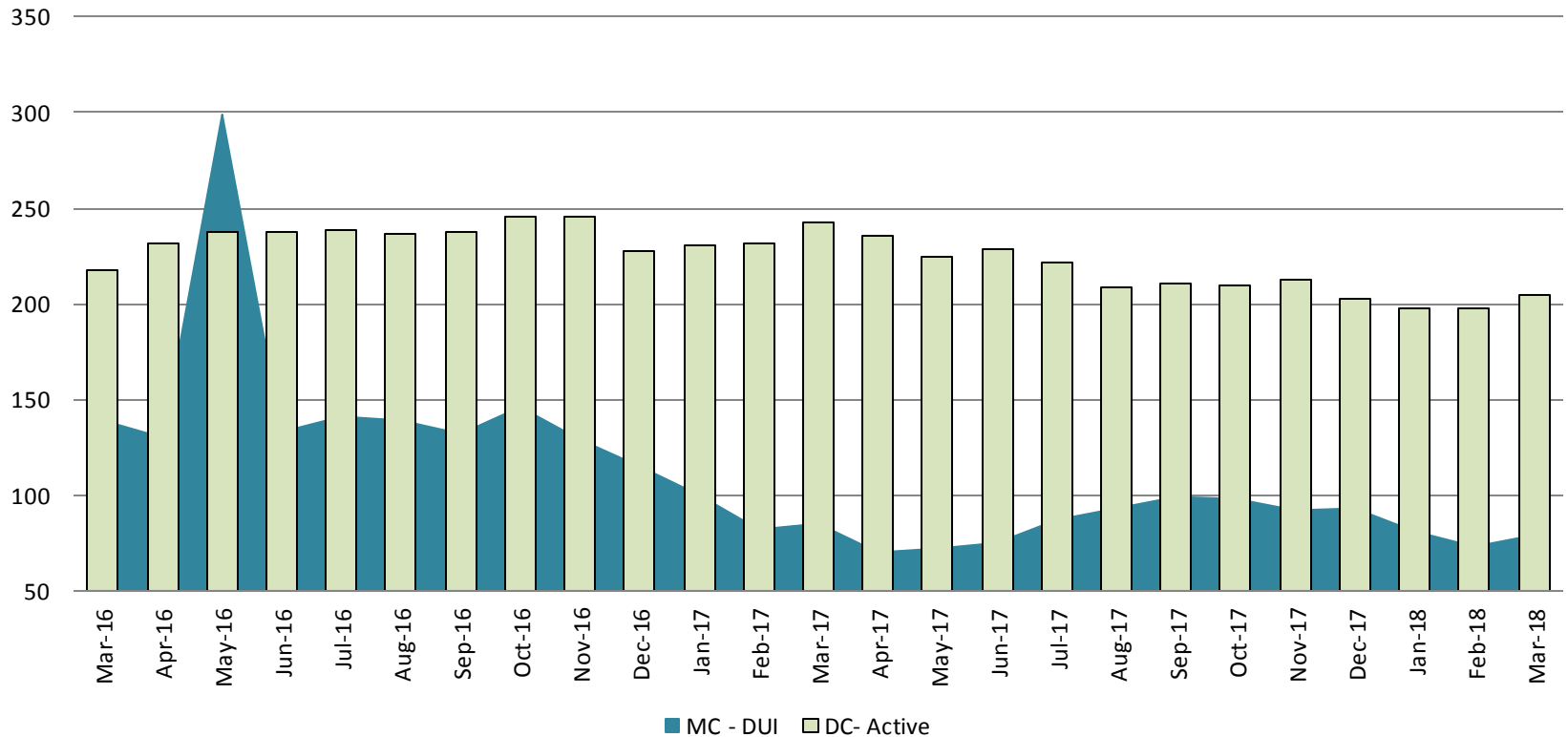
Arrows represent the overall increase/decrease of the population from year to year

Jail includes individuals in booking, detention, work release and out-of county (combined)



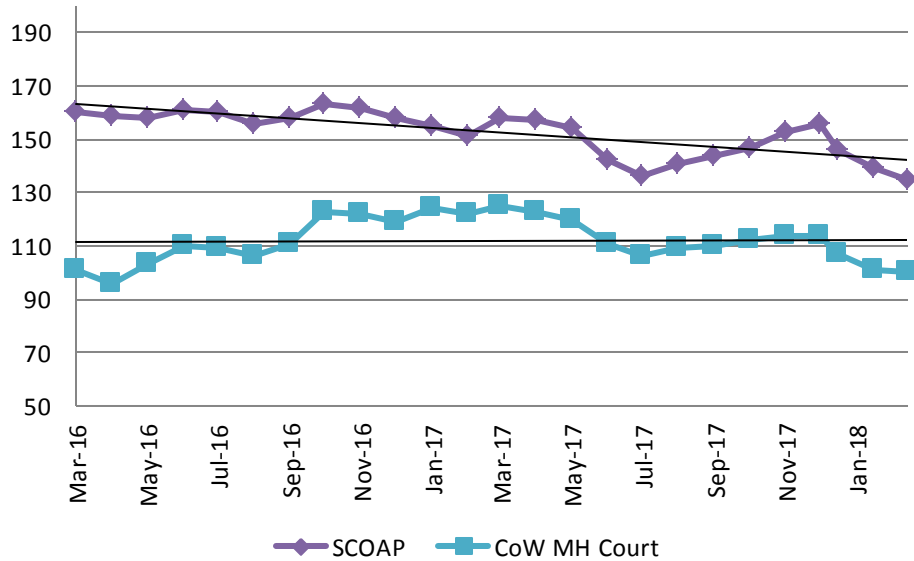
Diversion - Active Caseload

March 2016 - Present

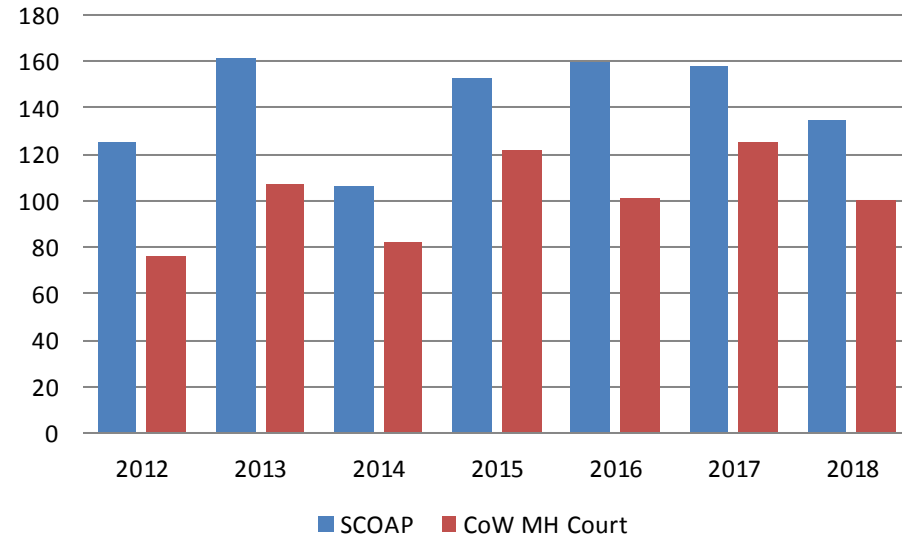


March	2016	2017	2018	2016 YTD Avg.	2017 YTD Avg.	2018 YTD Avg.
Muni. Court- DUI	139	85	79	131	91	78
Dist. Court- Active	218	243	205	231	235	200

Mental Health - ADP March 2016 - present

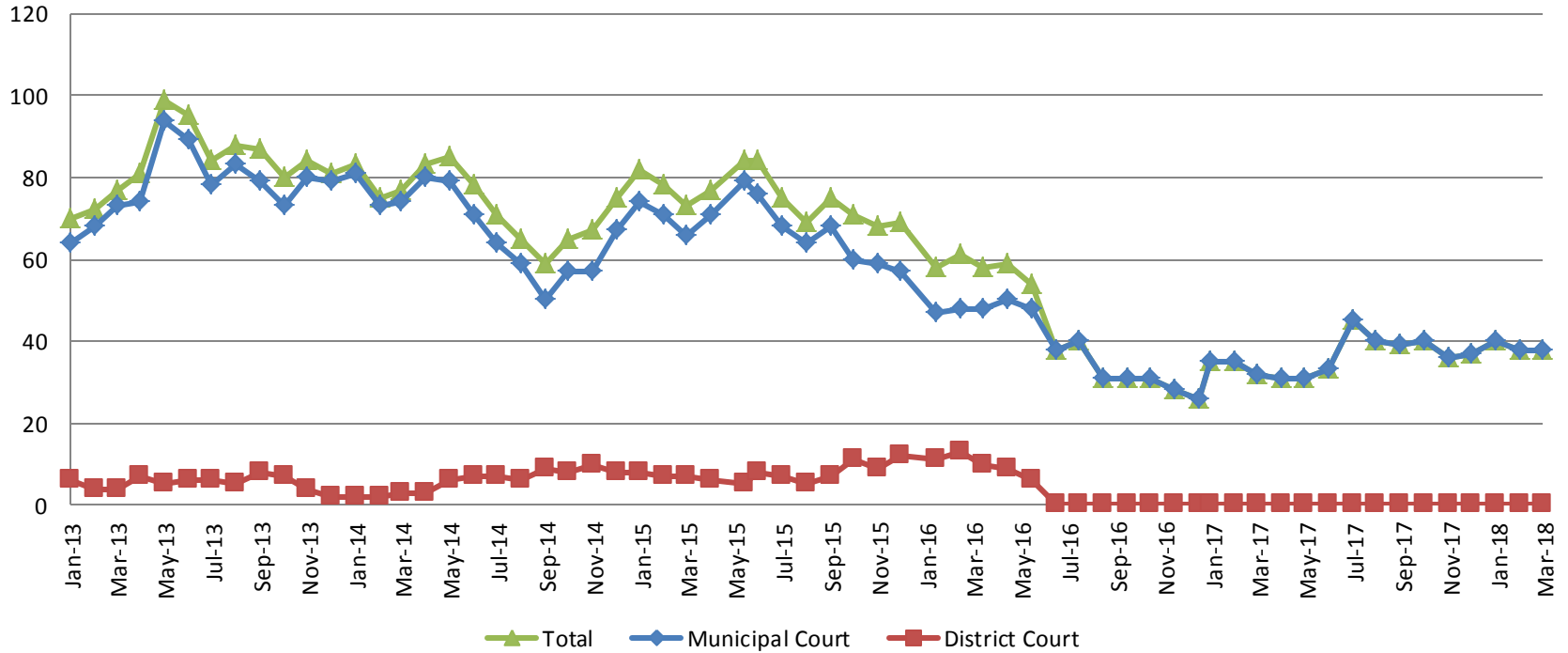


Mental Health ADP Year over Year- March



March	2016 ADP	2017 ADP	2018 ADP	2016 YTD Avg.	2017 YTD Avg.	2018 YTD Avg.
SCOAP	160	158	135	158	155	140
MH Court	101	125	100	99	124	103

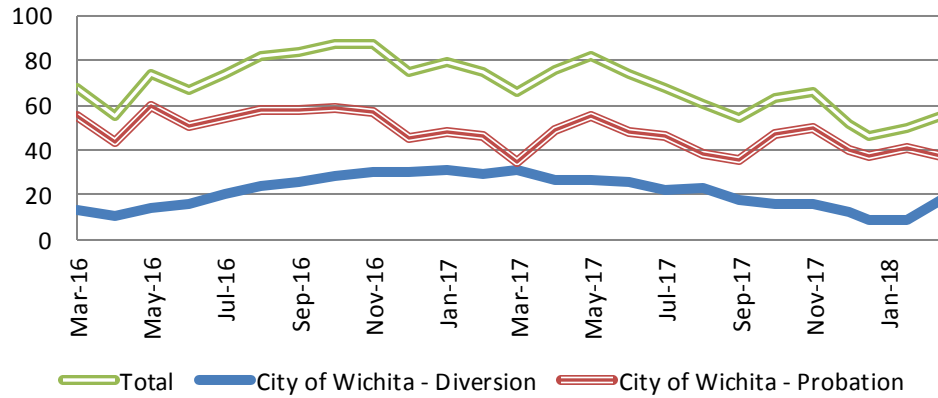
Day Reporting - Active Caseload 2013-present



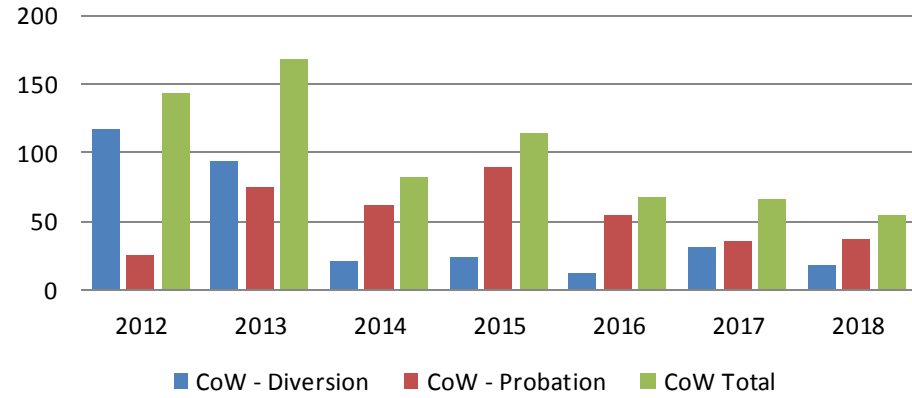
	2013	2014	2015	2016	2017	2018
Muni. Court	73	74	66	48	32	38
Muni. Court YTD Avg.	68	76	70	48	34	39



Drug Court - City of Wichita ADP: March 2016- present



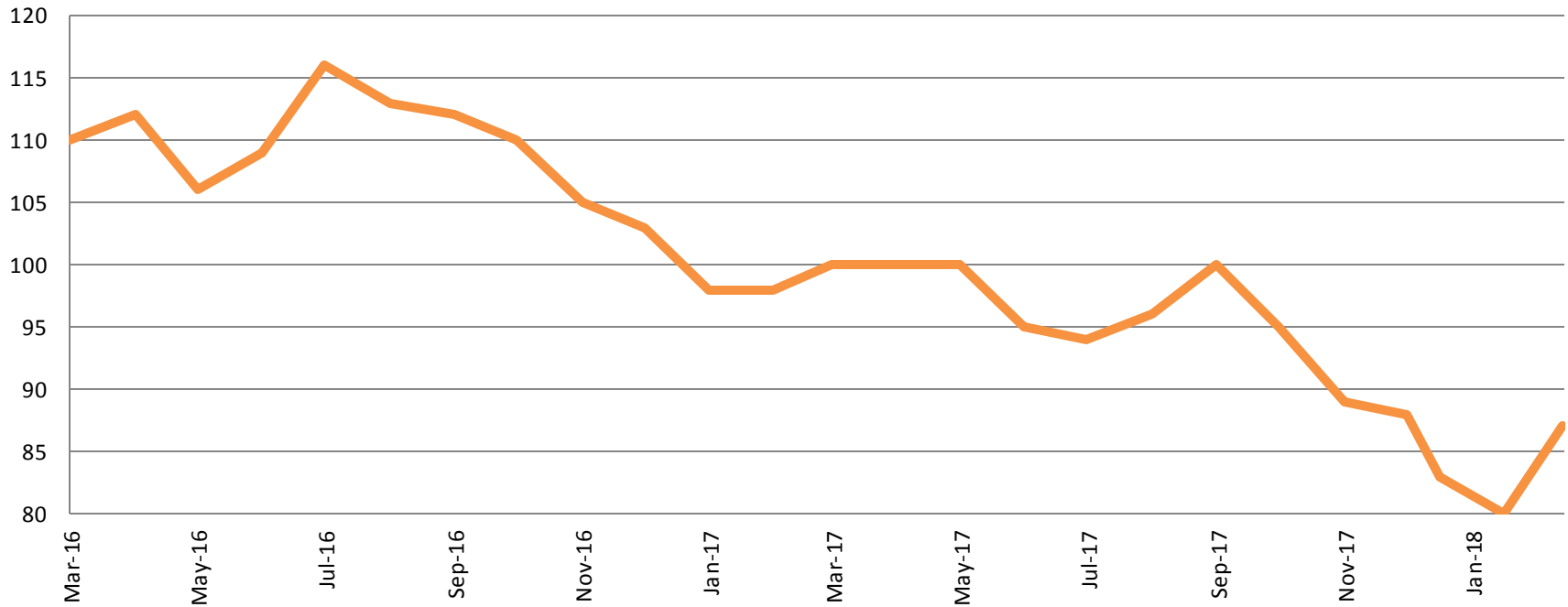
Drug Court- City of Wichita Year over Year- March



March	2016	2017	2018
Diversion	13	31	18
Probation	55	35	37
Total	68	66	55

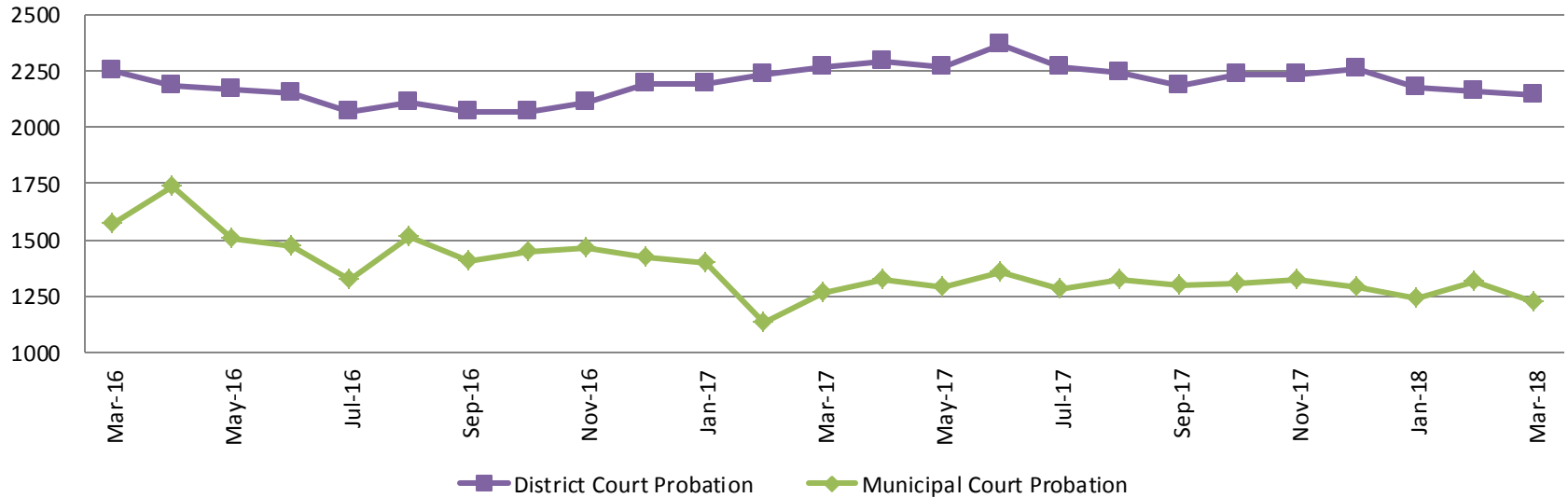


Drug Court - Sedgwick County ADP: March 2016 - present



	March	2016	2017	2018
Sedg. Co. ADP		110	100	87
YTD Avg.		108	99	83

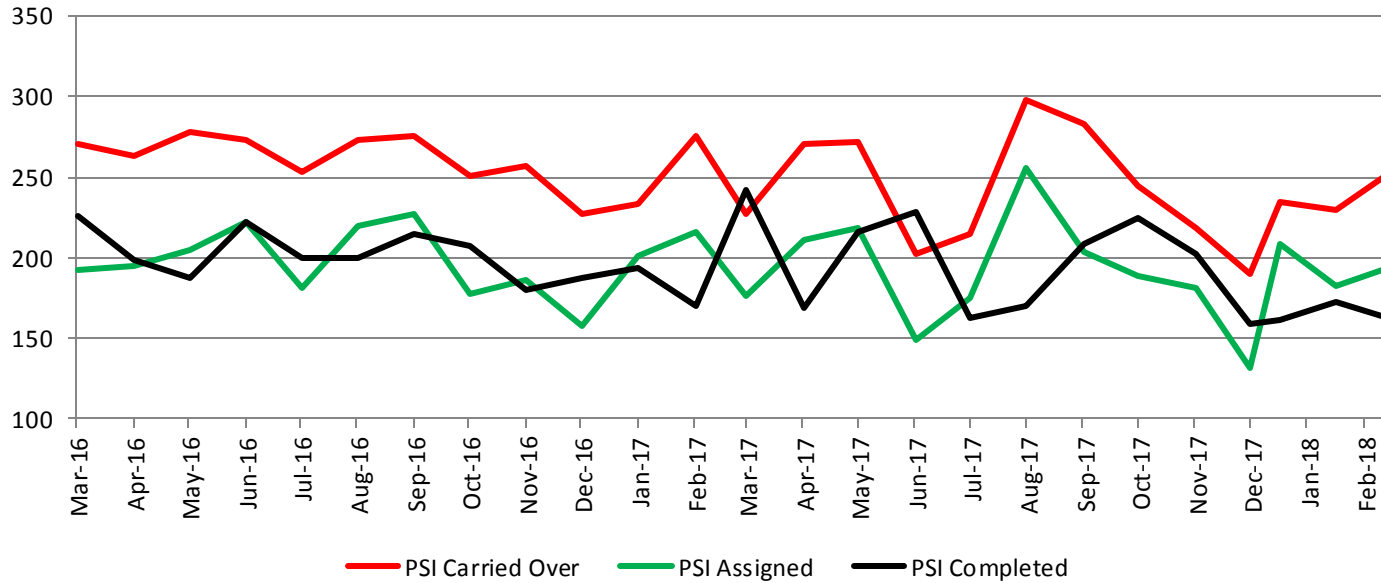
Probation - Active Caseloads March 2016 - present



March	2016	2017	2018	2016 YTD Avg.	2017 YTD Avg.	2018 YTD Avg.
Dist. Court Probation	2251	2267	2142	2273	2231	2159
Muni. Court Probation	1572	1268	1266	1551	1226	1259



District Court Probation: Pre-Sentence Investigation March 2016 - present

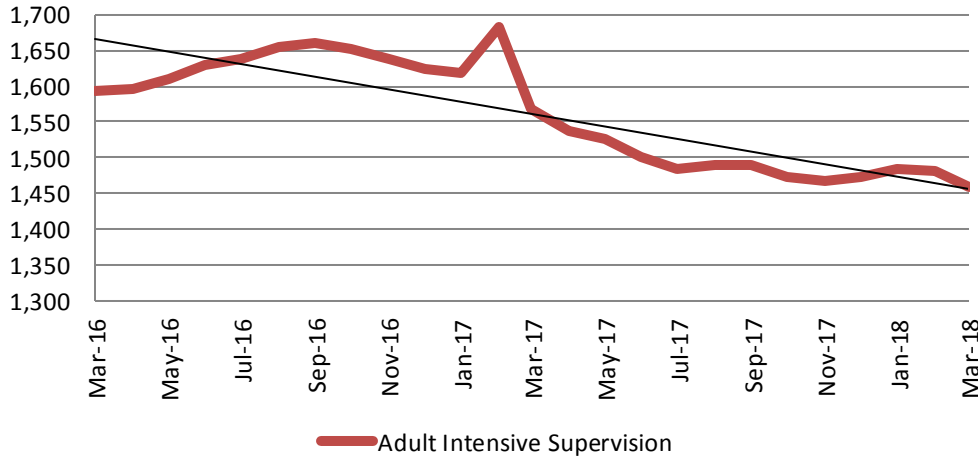


March	2016	2017	2018
Carried Over	271	227	252
Assigned	192	176	193
Completed	226	242	163



Community Corrections

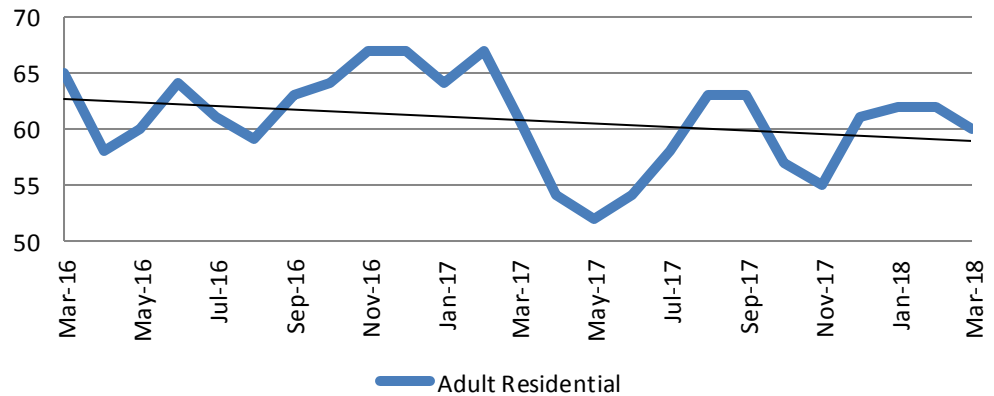
Adult Intensive Supervision Probation (AISP) ADP
March 2016- present



Year	March	March YTD Avg.
2016	1,593	1,612
2017	1,567	1,623
2018	1,459	1,475

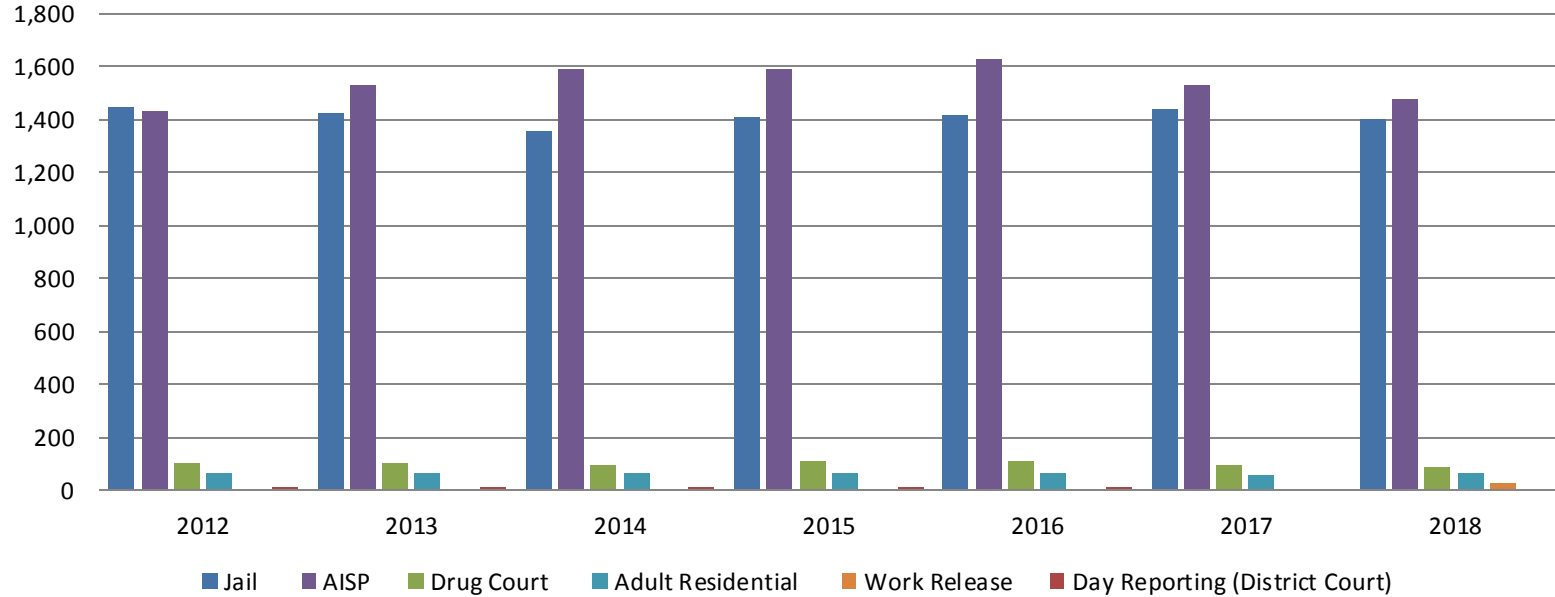
Year	March	March YTD Avg.
2016	65	66
2017	61	64
2018	60	61

Adult Residential: ADP
March 2016- present



Correlation: Total & Sedgwick County Programs (Adult)

Total Annual ADP 2012-Present

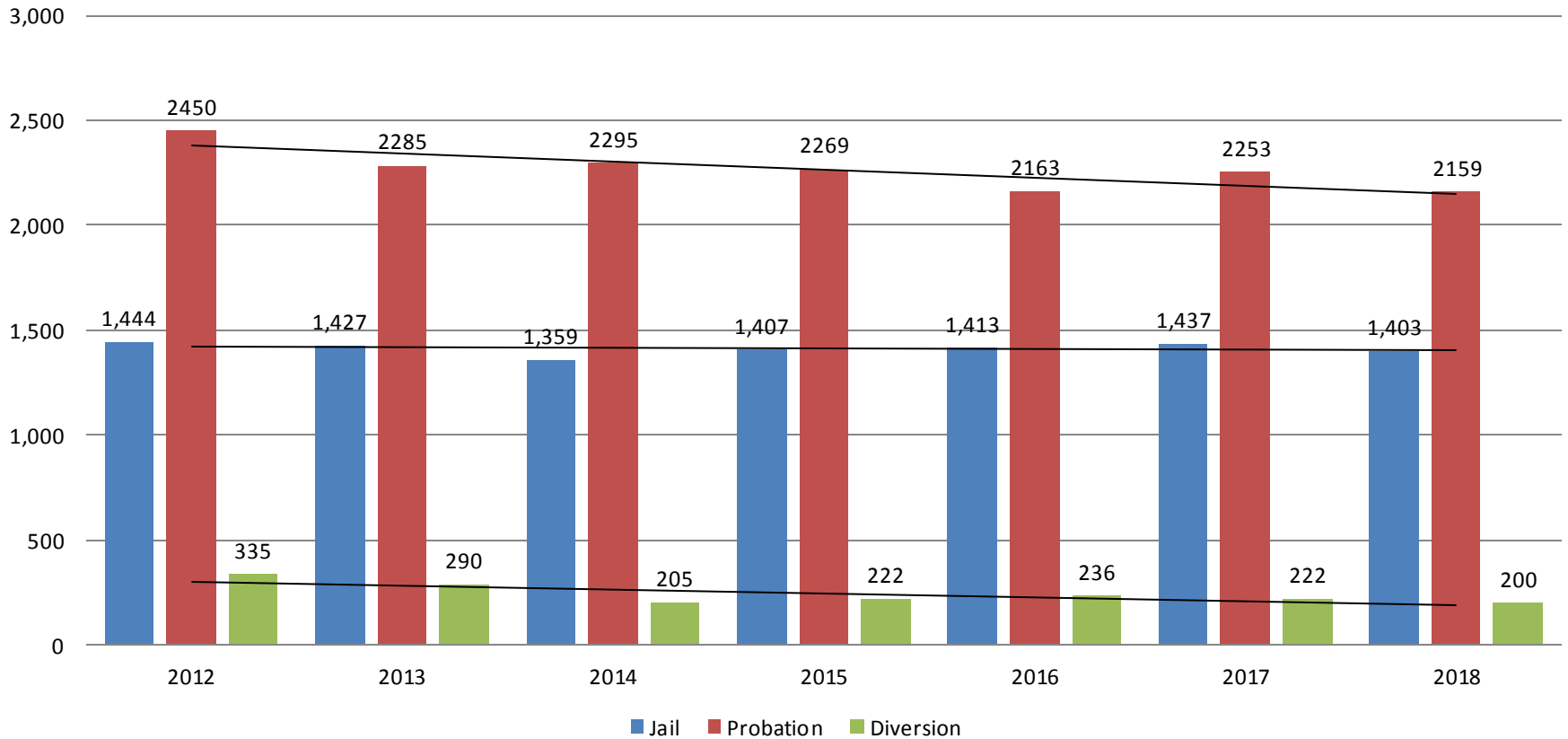


	2016	2017	2018
Jail	1,413	1,437	1,403
AISP	1,629	1,526	1,475
Drug Court	109	96	83
Adult Residential	63	59	61
Work Release	0	0	30
Day Reporting (DC)	4	0	0

Jail includes individuals in booking, detention, work release and out-of county (combined)
 Sedgwick County... working for you (data obtained from detention facility, SG Dept. of Corrections, Pretrial Services, & CoW)

Correlation: Total & District Court Programs

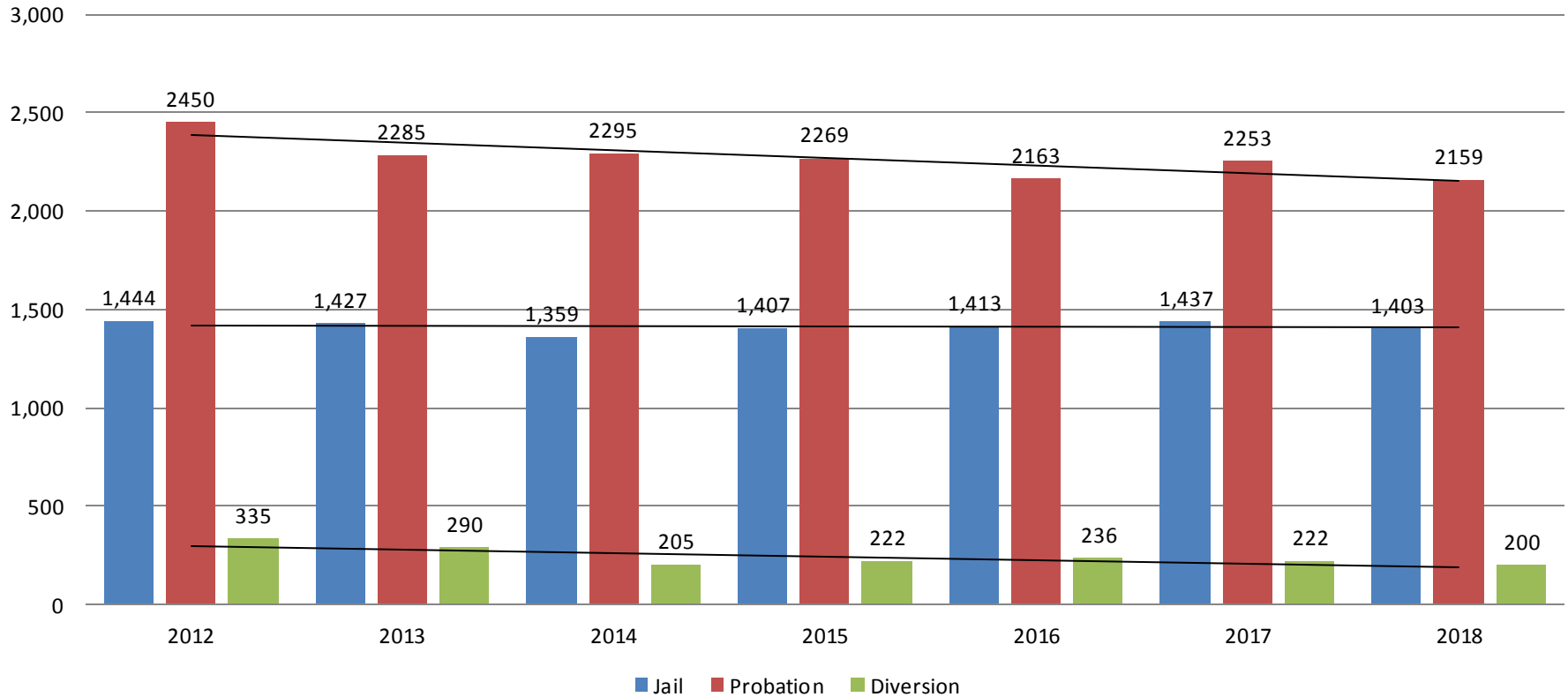
Total Annual ADP: 2012 - Present



Jail includes individuals in booking, detention, work release and out-of county (combined)

Correlation: Total & City of Wichita / Municipal Court Programs

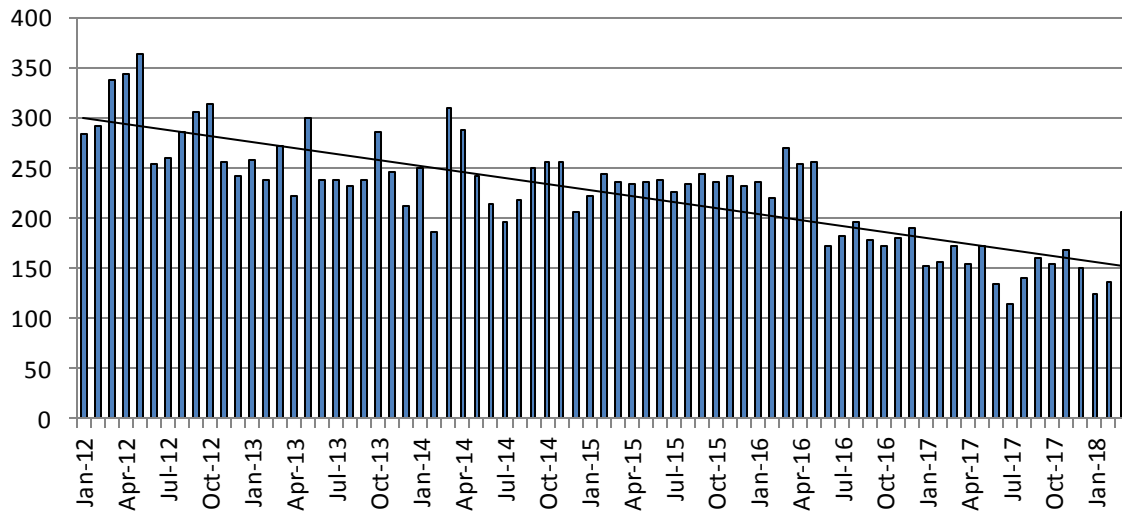
Total Annual ADP: 2012 - Present



Jail includes individuals in booking, detention, work release and out-of county (combined)

Juvenile

JIAC Intakes: 2012 - present

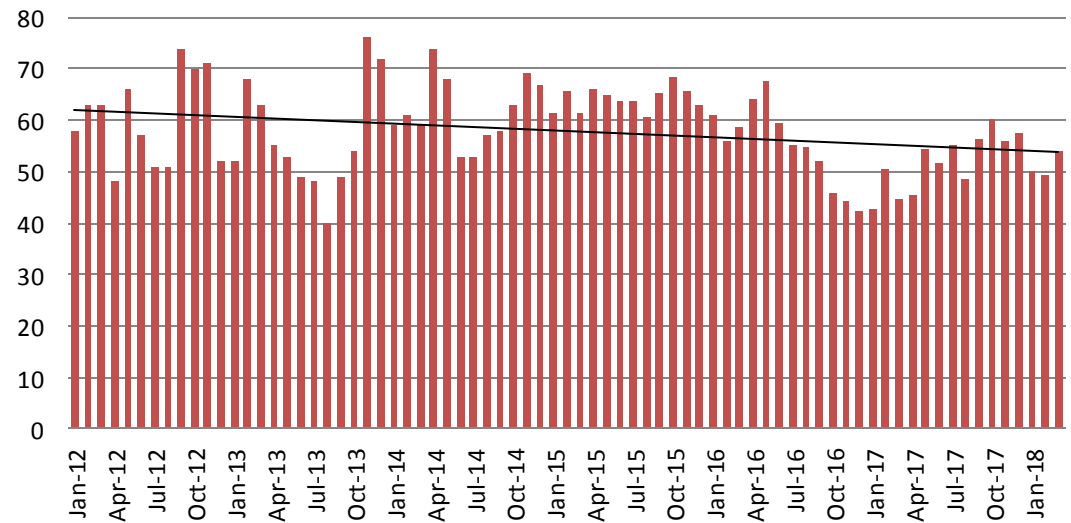


Year	March	March YTD Avg.
2013	272	256
2014	309	249
2015	236	233
2016	270	241
2017	172	160
2018	206	155

Year	March	March YTD Avg.
------	-------	----------------

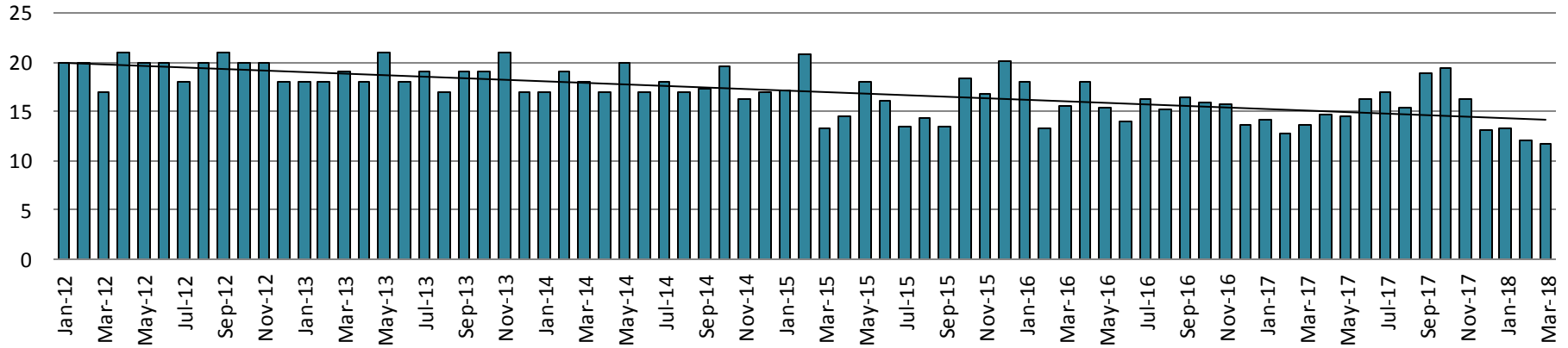
2013	63	61
2014	59	60
2015	61	63
2016	59	58
2017	45	46
2018	54	51

JDF ADP: 2012 - present

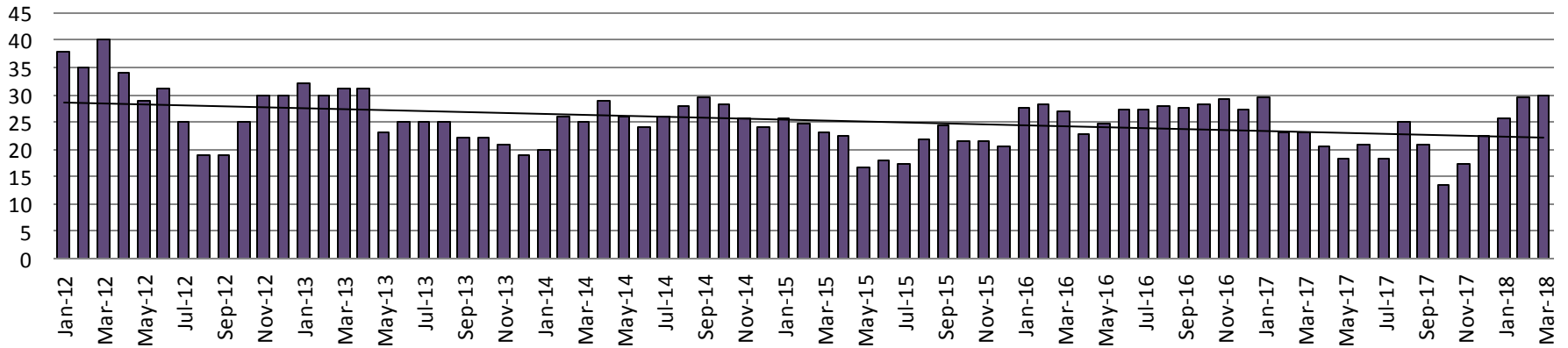


Juvenile Detention Alternatives

Juvenile Residential Facility (JRF) ADP: 2012 - present

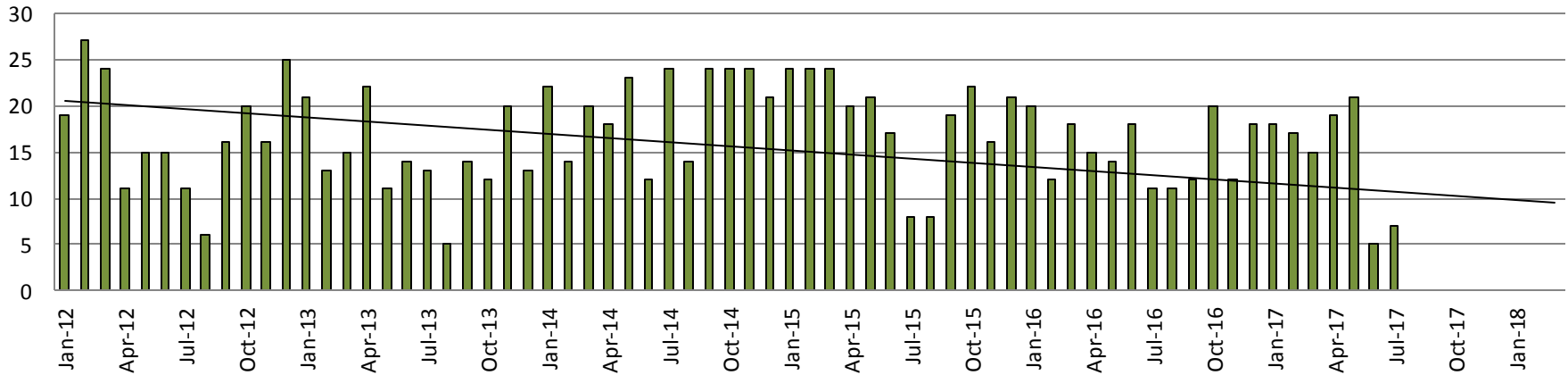


Home-Based Supervision ADP: 2012 - present

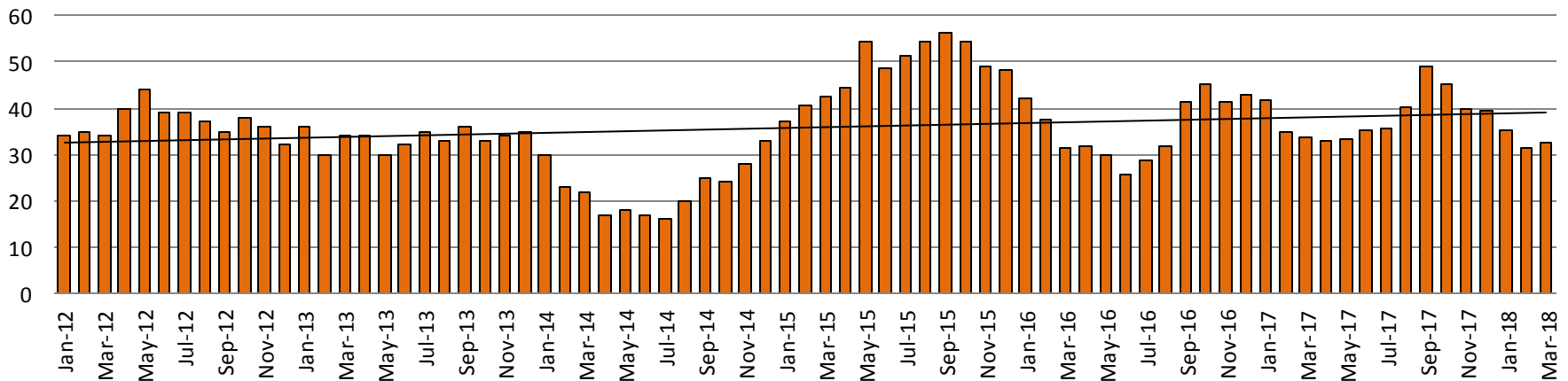


Juvenile Detention Alternatives

Weekend Alternative Detention Program 2012 - present



Detention Advocacy Case Management Services ADP: 2012 - present



Juvenile Detention Services

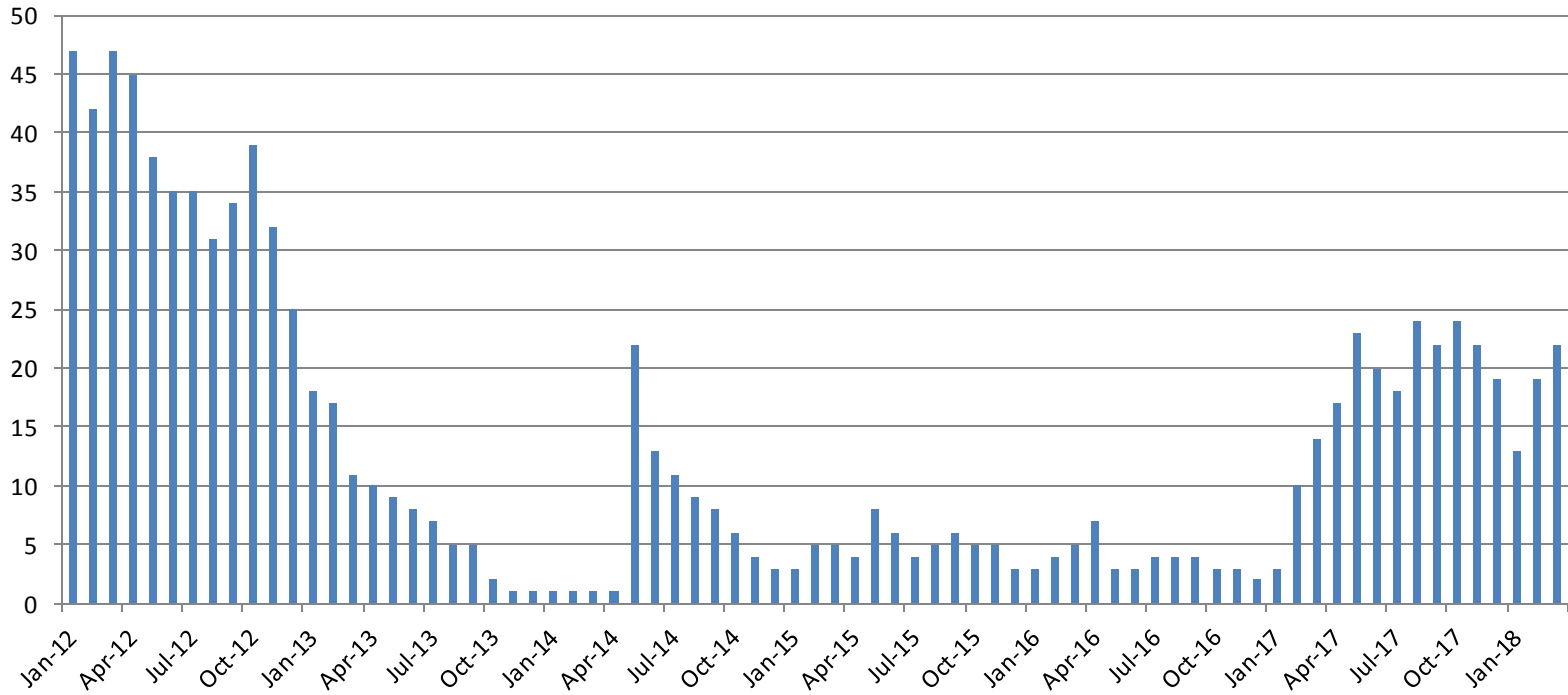
March ADP	2015	2016	2017	2018
Juvenile Detention Facility	61	59	45	54
Juvenile Residential Facility	13	16	14	12
Home Based Supervision	23	27	23	30
Detention Advocacy Case Management Services	42	32	34	33
Weekend Alternative Detention Program (total)	24	18	15	0

March YTD AVERAGE	2015	2016	2017	2018
Juvenile Detention Facility	63	58	46	51
Juvenile Residential Facility	17	16	13	12
Home Based Supervision	25	28	25	28
Detention Advocacy Case Management Services	40	37	37	33
Weekend Alternative Detention Program	24	17	17	0



Monthly Jail Snapshot: March 31, 2018

BICE Holds 2012-Present

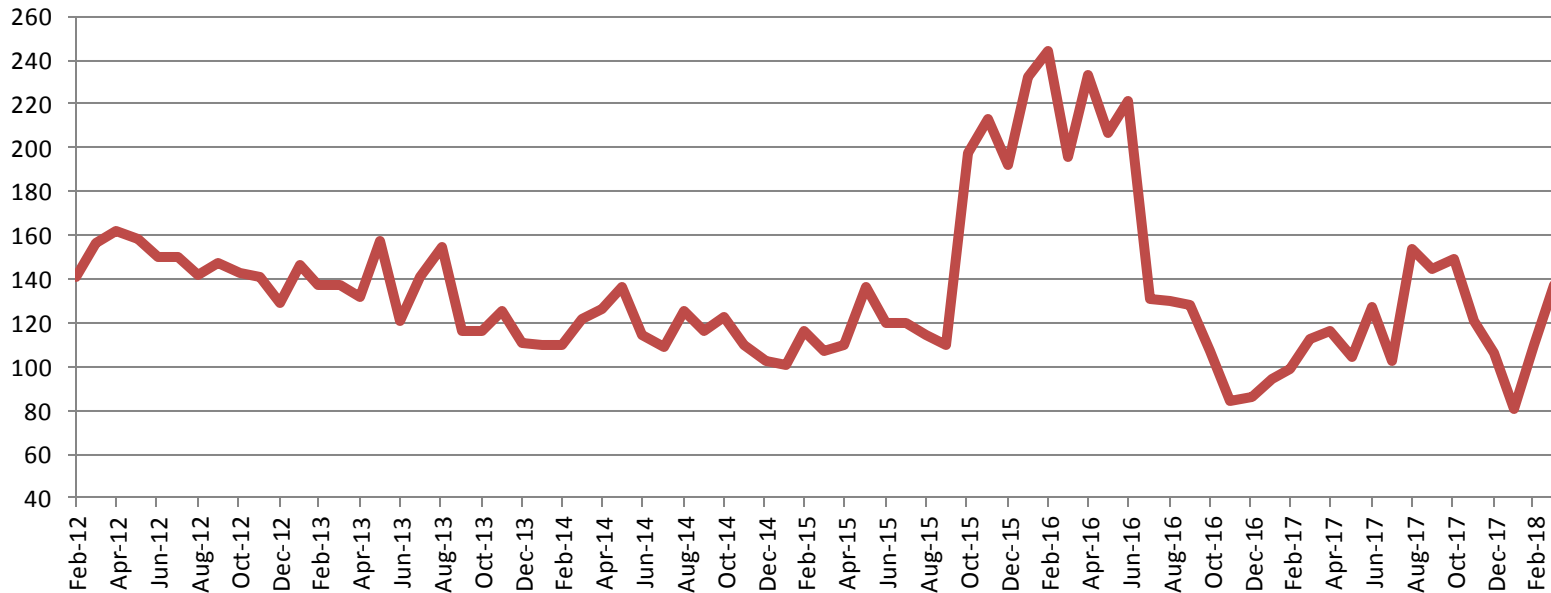


2013	2014	2015	2016	2017	2018
11	1	5	5	14	22



Monthly Jail Snapshot: March 31, 2018

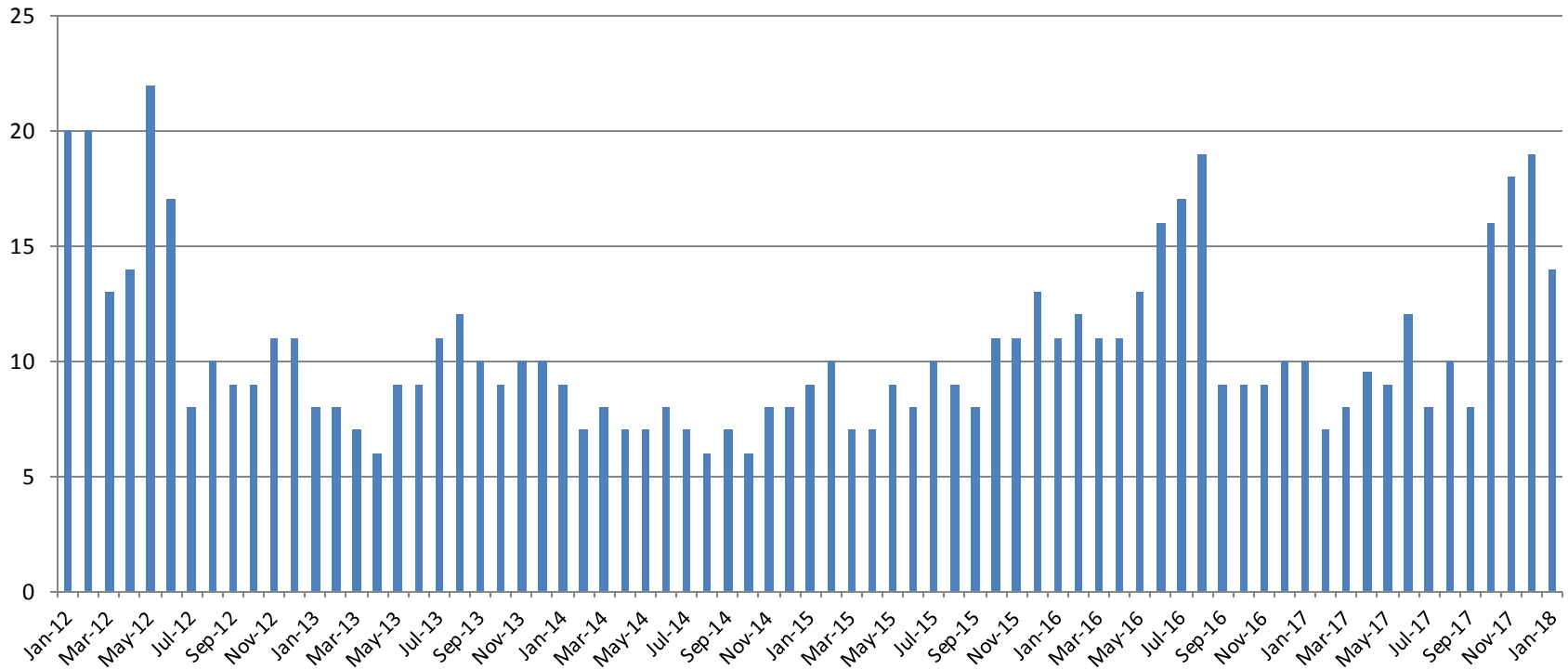
Felony Commitments: February 2012 - present



2013	2014	2015	2016	2017	2018
137	122	107	196	113	137



Journal Entry Completion (Average Days) January 2012-Present



Jan.	2013	2014	2015	2016	2017	2018
Avg. Days	8	9	9	11	10	14
YTD Avg.	8	9	9	11	10	14

