

Criminal Justice Coordinating Council

Population Report & Program Trends

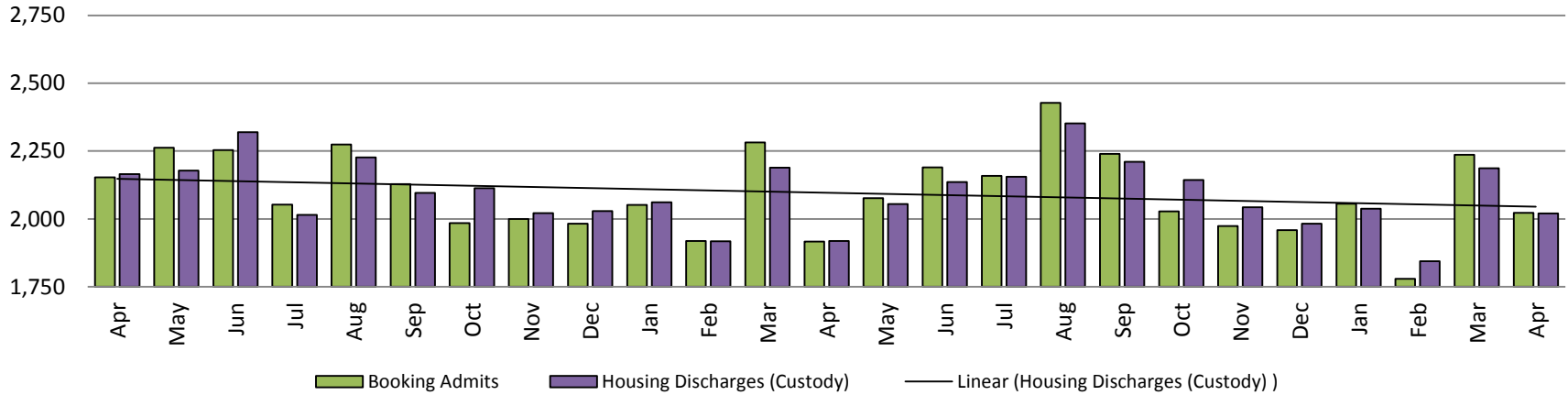
May 2018



Sedgwick County...
working for you

Detention Facility

Booking Admits & Housing Discharges from Custody April 2016-Present



Bookings Year over Year: Month of March



Bookings April

Housing Discharges April

2016: 2,153

2016: 2,165

2017: 1,916

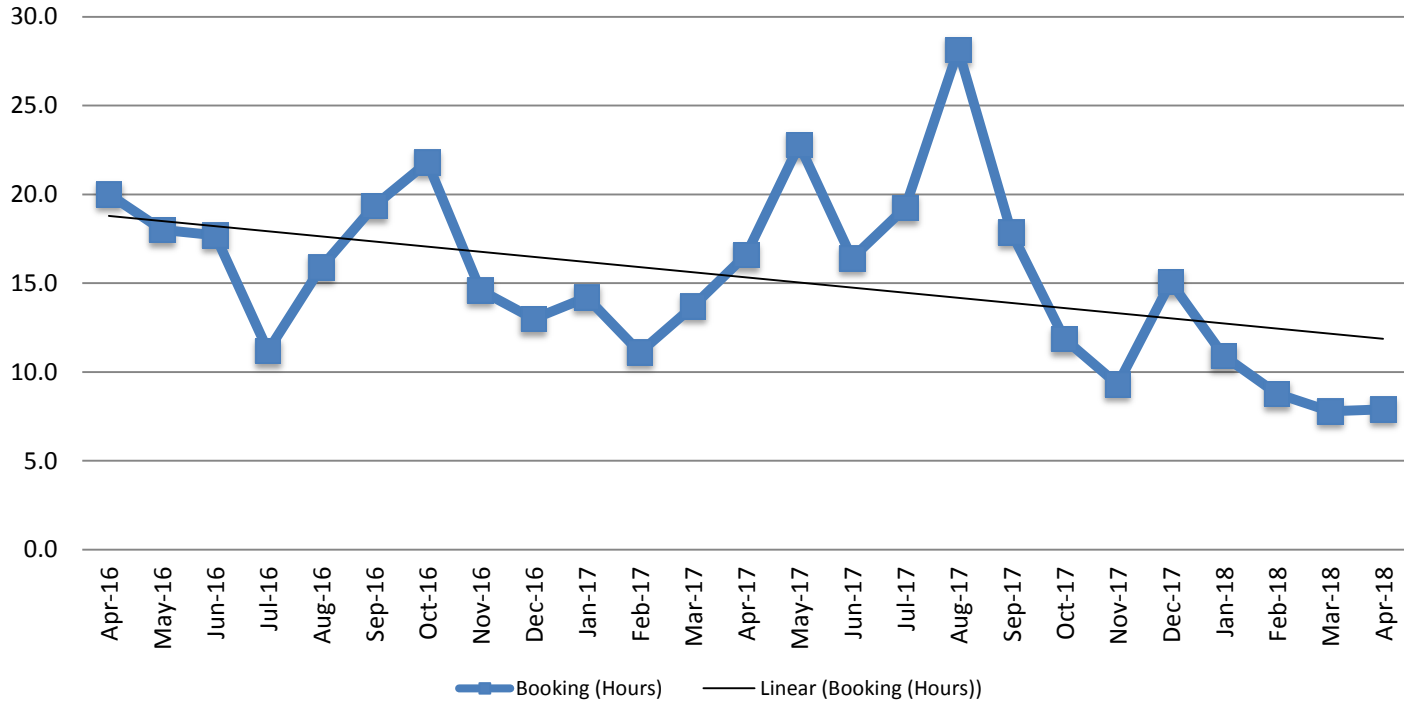
2017: 1,919

2018: 2,022

2018: 2,020



Average Length of Stay: Booking (Hours) April 2016 - Present

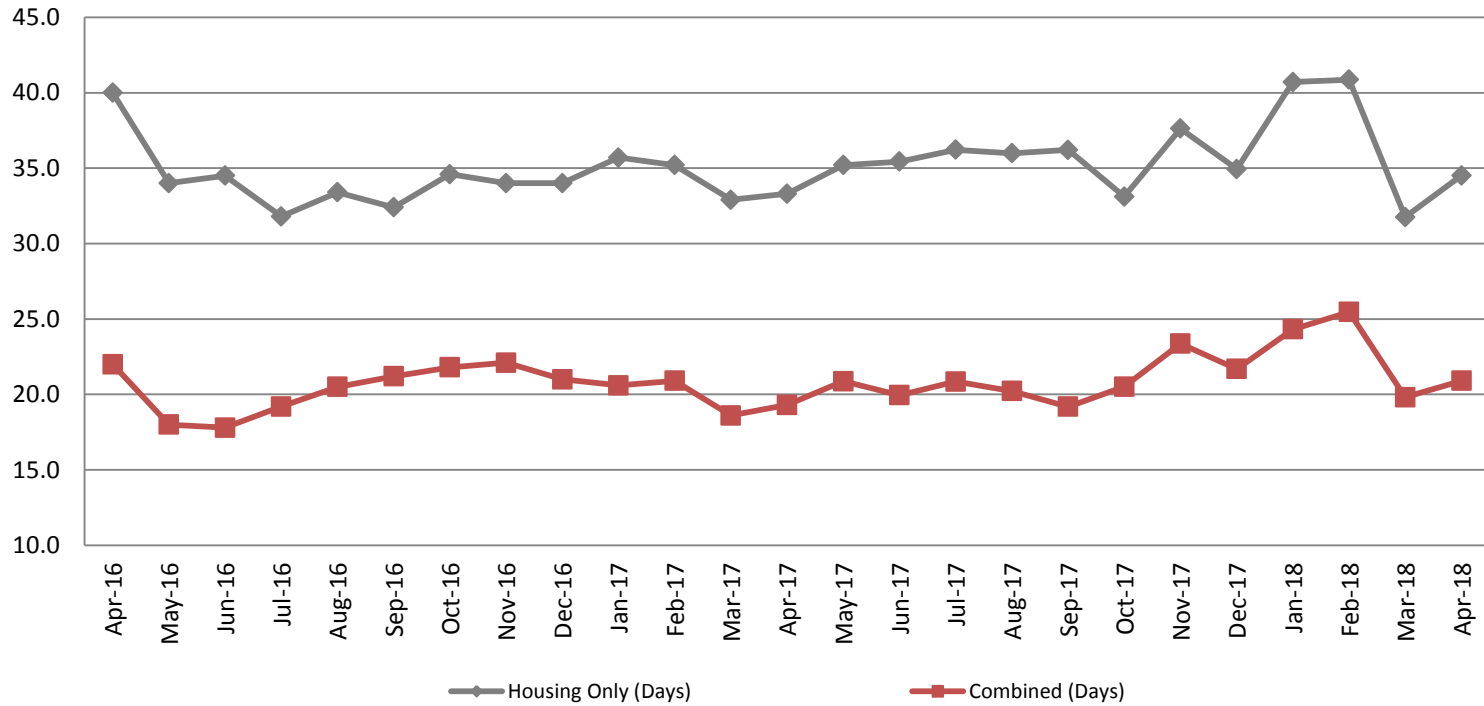


April	April YTD Average
2016: 20.0	2016: 21.8
2017: 16.6	2017: 13.9
2018: 7.9	2018: 8.8



Average Length of Stay: Housing & Combined (Days)

April 2016 - Present



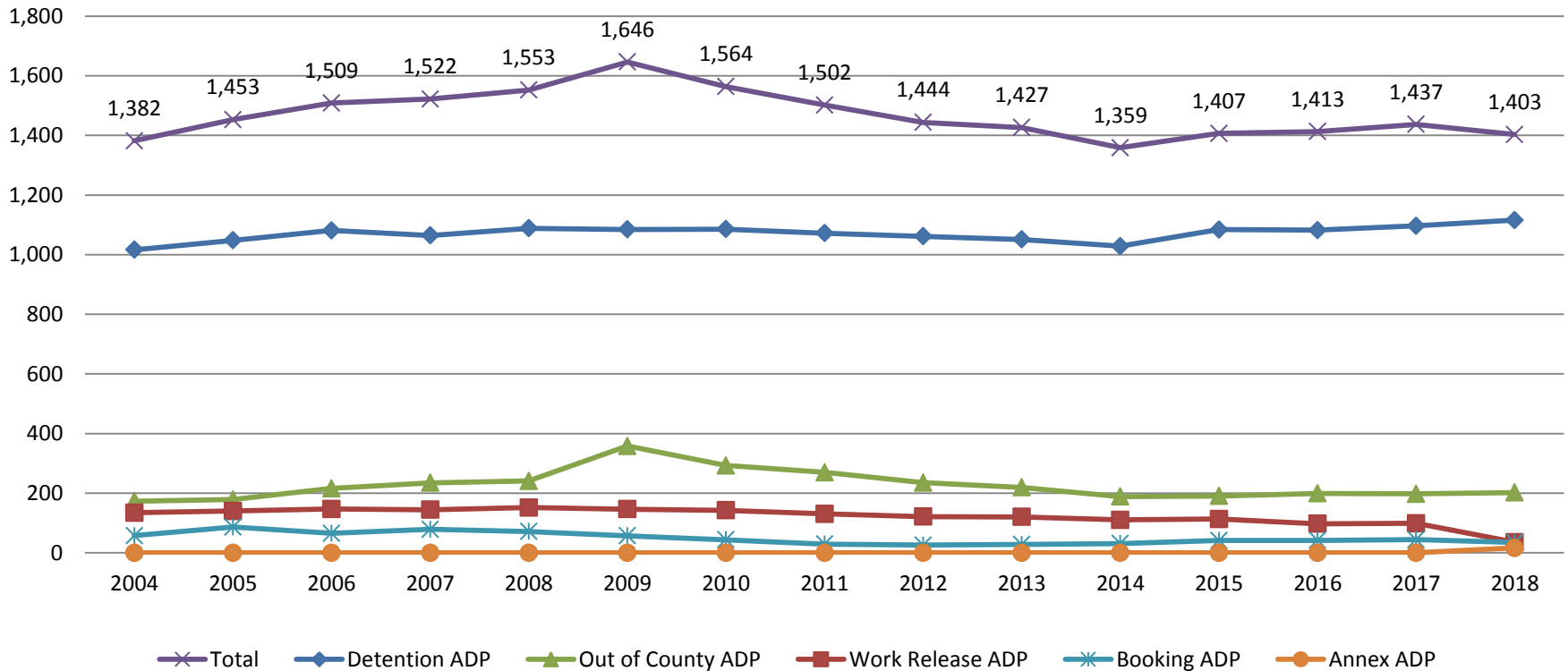
Month, Year	Housing Only	Housing YTD AVG	Combined Days	Combined YTD AVG
April 2016	40.0	37.3	22.0	19.5
April 2017	33.3	34.3	19.3	19.9
April 2018	34.5	37.0	20.9	22.6

(data obtained from detention facility)



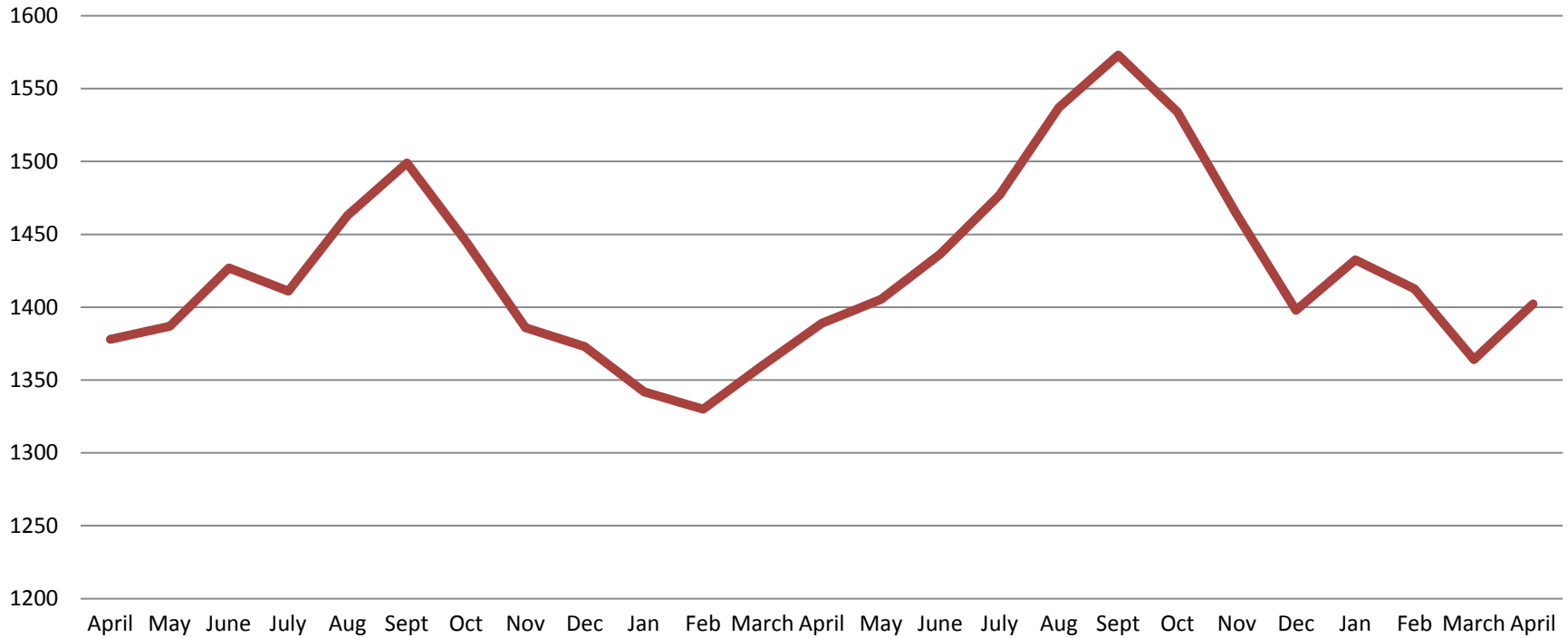
Jail: Annual Average Daily Population (ADP)

TRENDS: Booking, Detention, Work Release, & Out of County
Annual ADP: 2004 - present



*Beginning January 2018, Work Release program began transfer to Division of Corrections

TOTAL MONTHLY ADP: JAIL (Booking, Detention Facility, Work Release, & Out of County) April 2016 - present

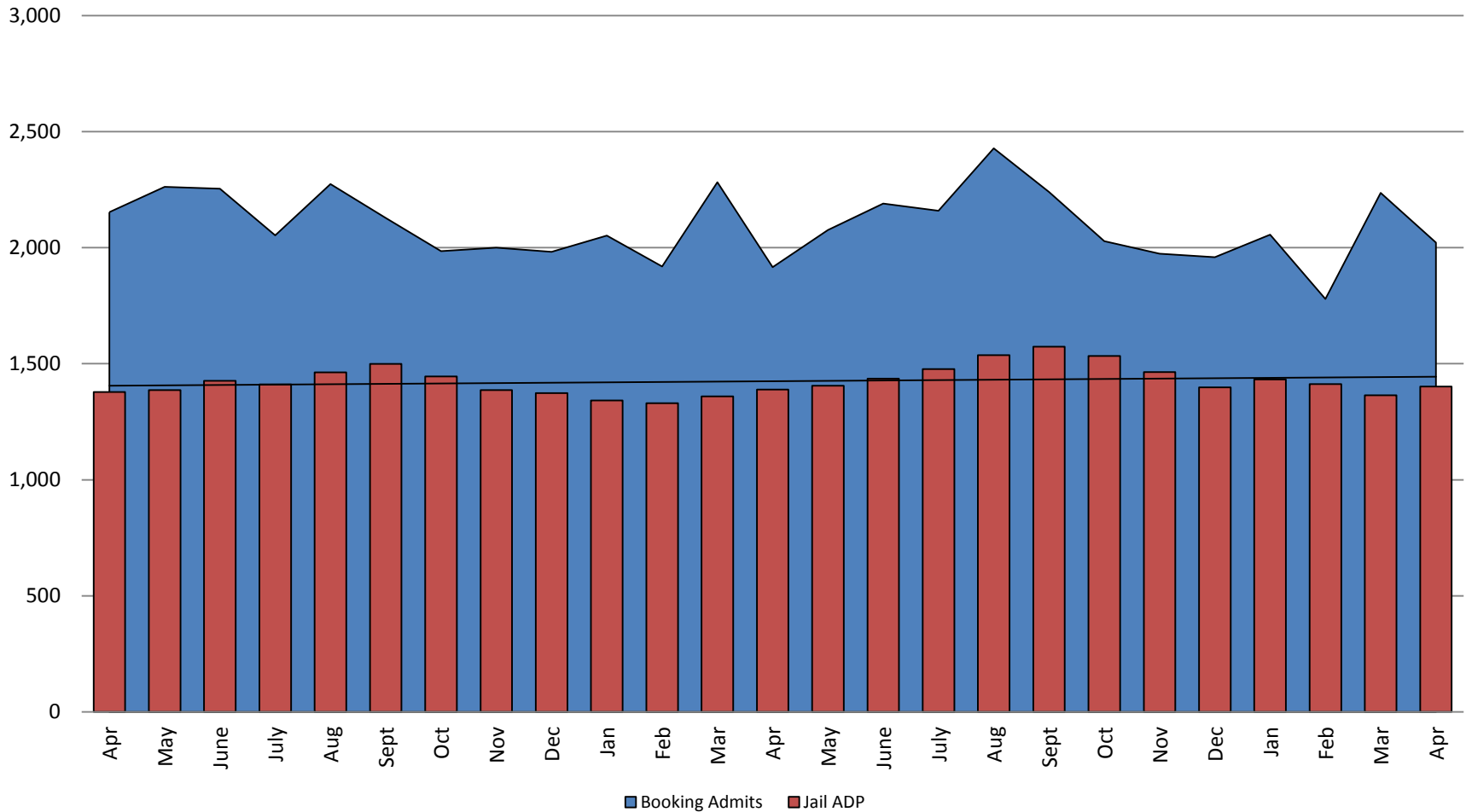


April 2016	April 2017	April 2018
1,378	1,389	1,402

*Beginning January 2018, Work Release program began transfer to Division of Corrections

This slide shows total monthly ADP for individuals in booking, detention, work release, jail annex, and out-of county (combined)
(data obtained from detention facility)

Booking Admits & Total Monthly ADP (Jail): April 2016 - present

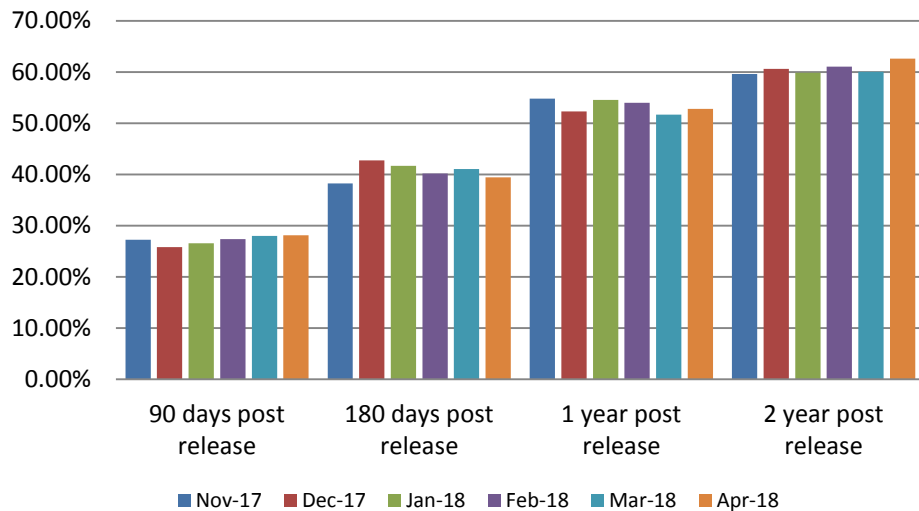


Jail includes individuals in booking, detention, work release and out-of-county (combined)

(data obtained from detention facility)



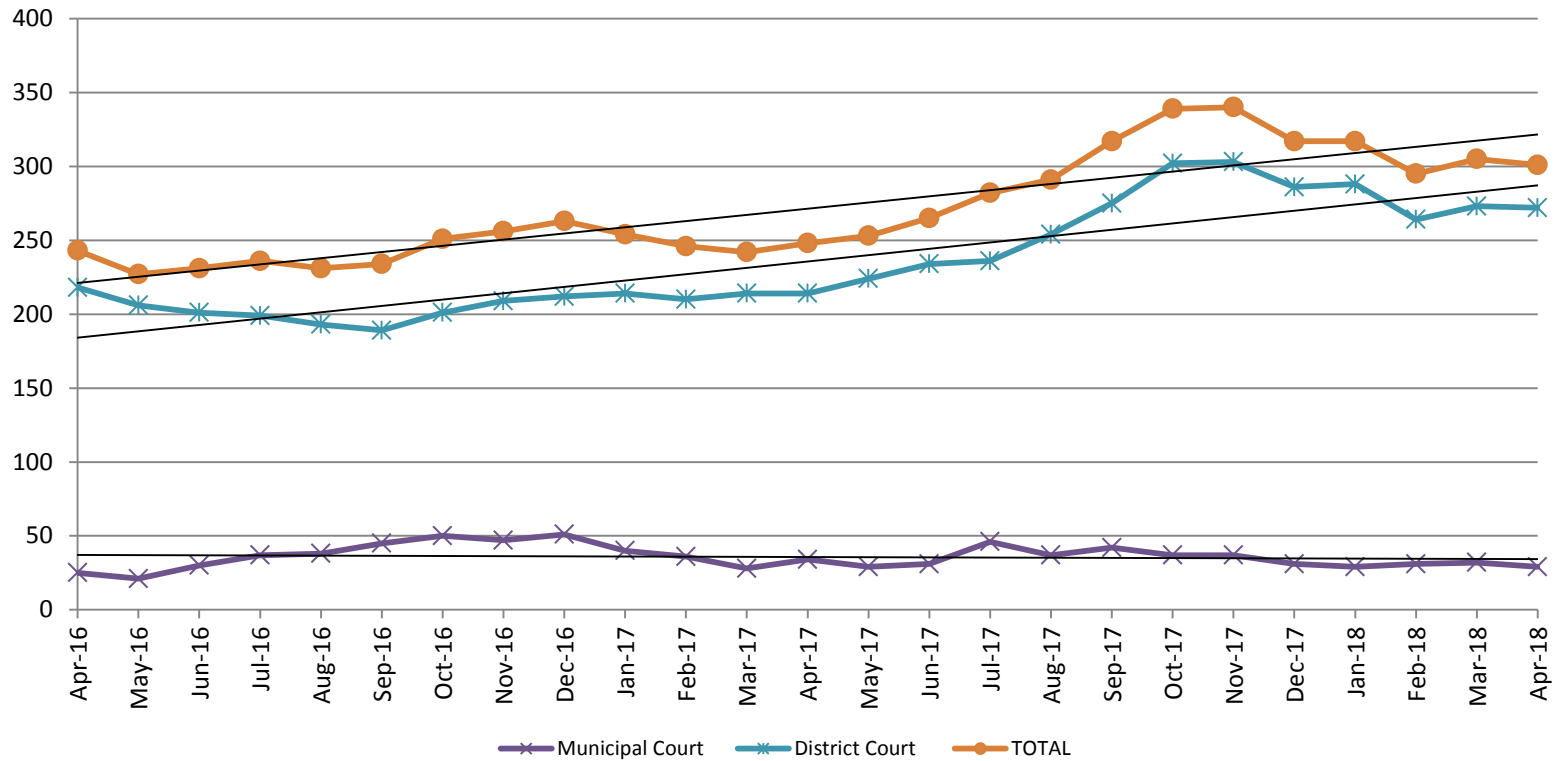
Percent of released inmates rearrested



Month Year	90 Days	180 Days	1 Year	2 Years
Nov 2017	27.25%	38.27%	54.81%	59.64%
Dec 2017	25.85%	42.72%	52.28%	60.64%
Jan 2018	26.55%	41.67%	54.57%	59.84%
Feb 2018	27.39%	40.22%	54.02%	61.03%
March 2018	28.00%	41.08%	51.69%	60.03%
April 2018	28.13%	39.41%	52.82%	62.63%



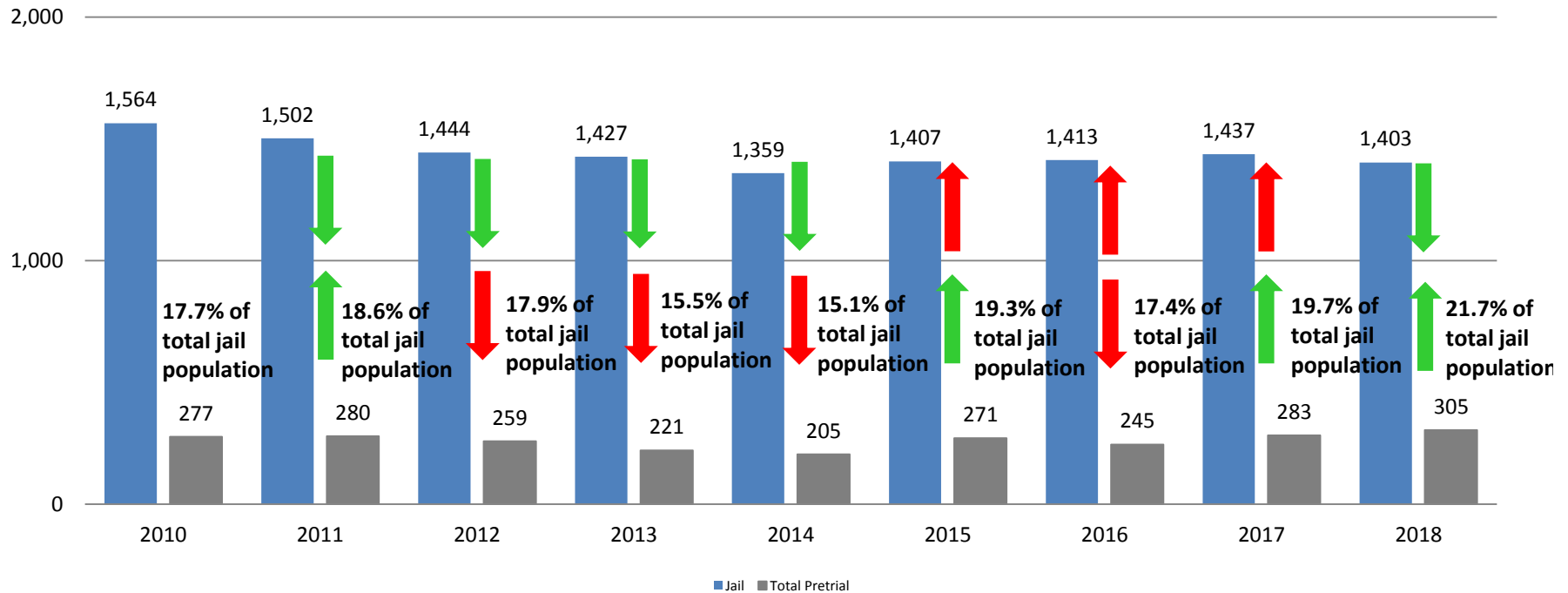
Pretrial Services Program (PSP) Monthly ADP: April 2016 - Present



April	2016 ADP	2017 ADP	2018 ADP	2016 YTD Avg.	2017 YTD Avg.	2018 YTD Avg.
Muni. Court	25	34	29	33	30	31
Dist. Court	218	214	272	219	213	274
Total	243	248	301	254	248	306

Correlation: Total & PSP

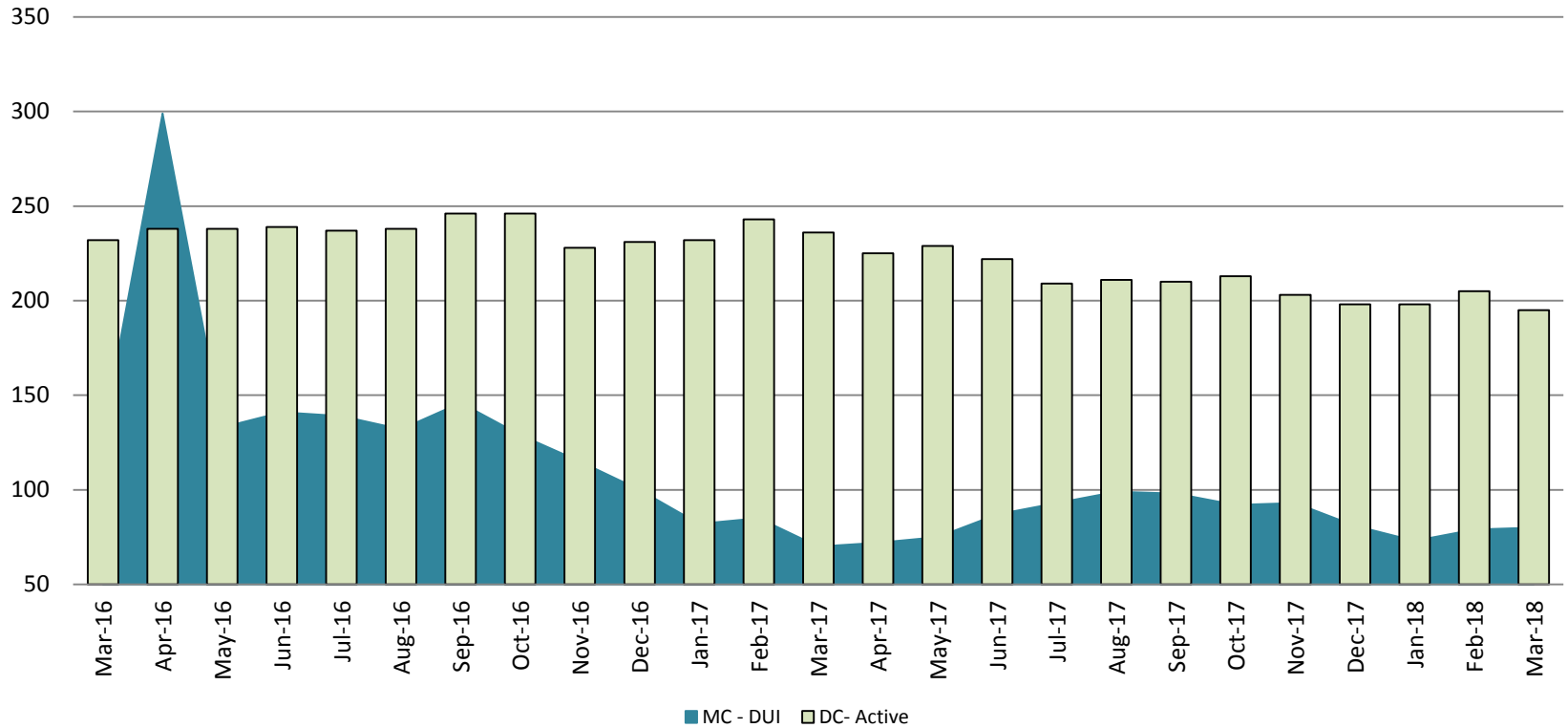
Total Annual ADP: 2010 - Present



Arrows represent the overall increase/decrease of the population from year to year

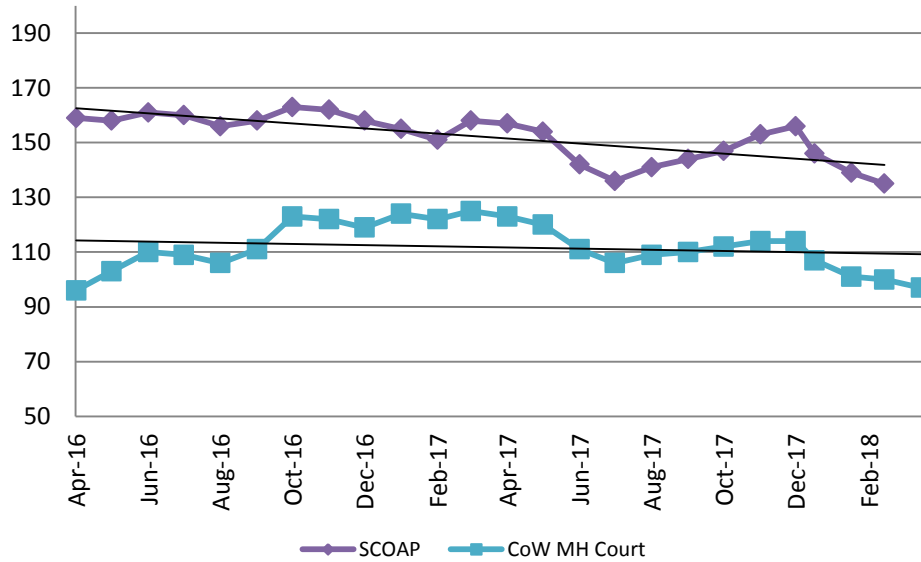
Jail includes individuals in booking, detention, work release and out-of county (combined)

Diversion - Active Caseload April 2016 - Present

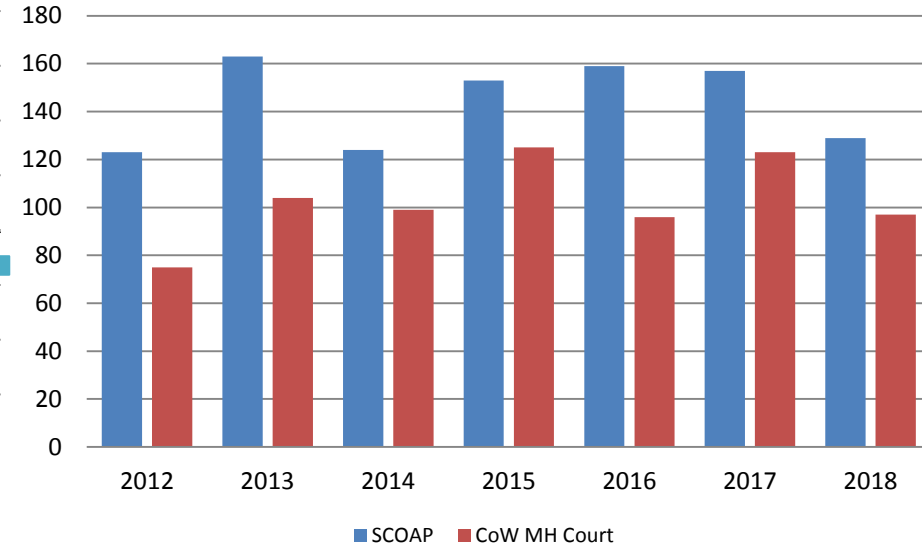


April	2016	2017	2018	2016 YTD Avg.	2017 YTD Avg.	2018 YTD Avg.
Muni. Court- DUI	130	70	80	131	84	78
Dist. Court- Active	232	236	195	232	236	199

Mental Health - ADP April 2016 - present

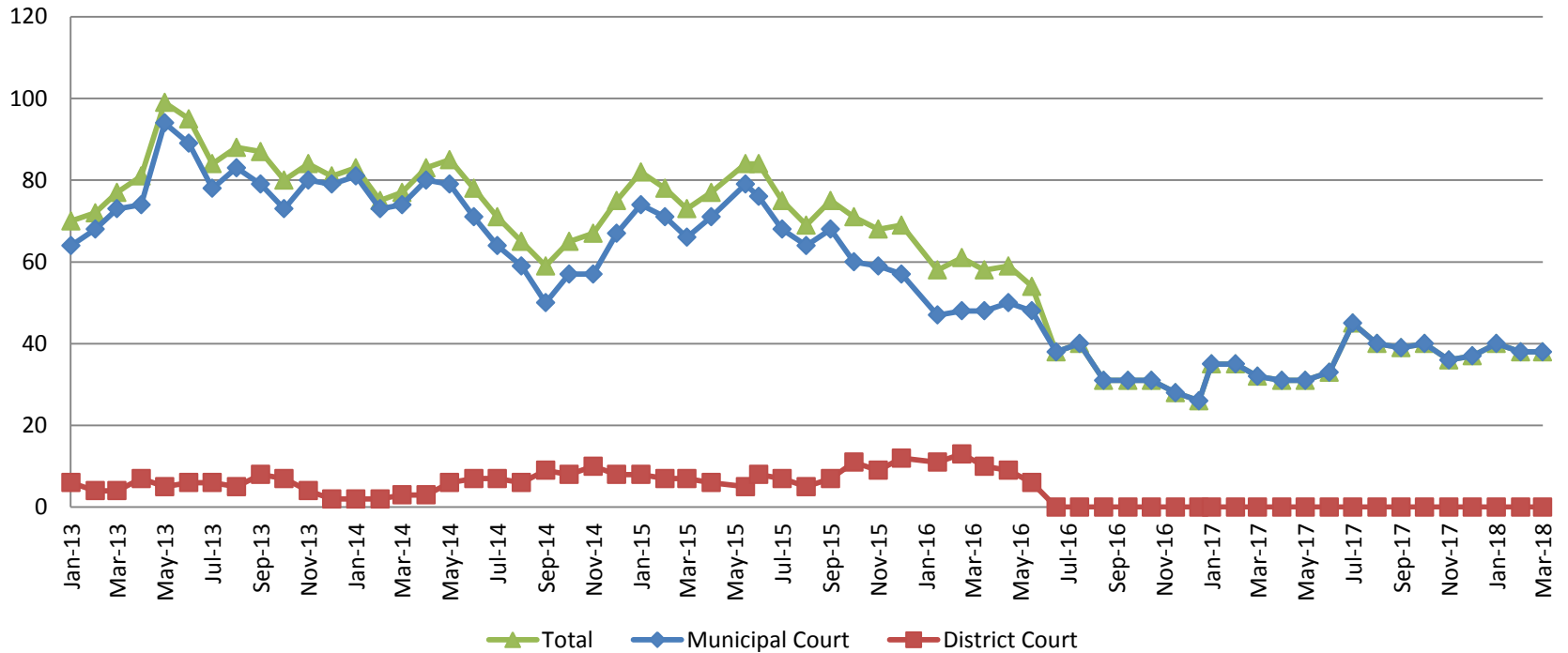


Mental Health ADP Year over Year- April



April	2016 ADP	2017 ADP	2018 ADP	2016 YTD Avg.	2017 YTD Avg.	2018 YTD Avg.
SCOAP	159	157	129	158	155	137
MH Court	96	123	97	98	124	101

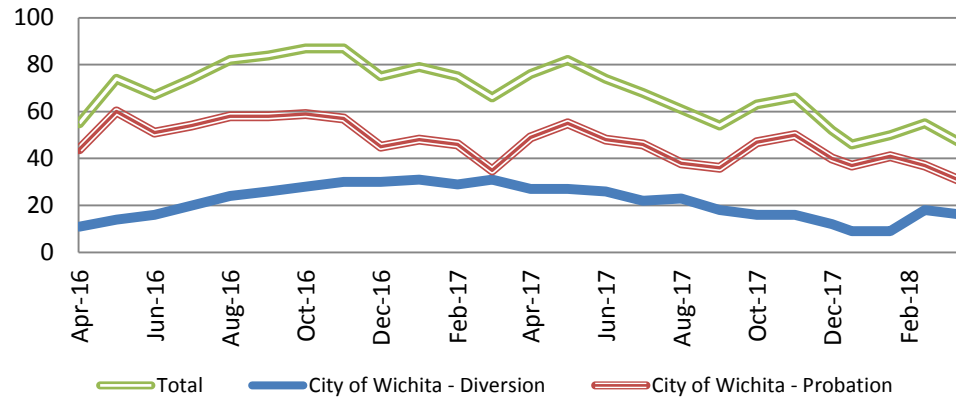
Day Reporting - Active Caseload 2013-present



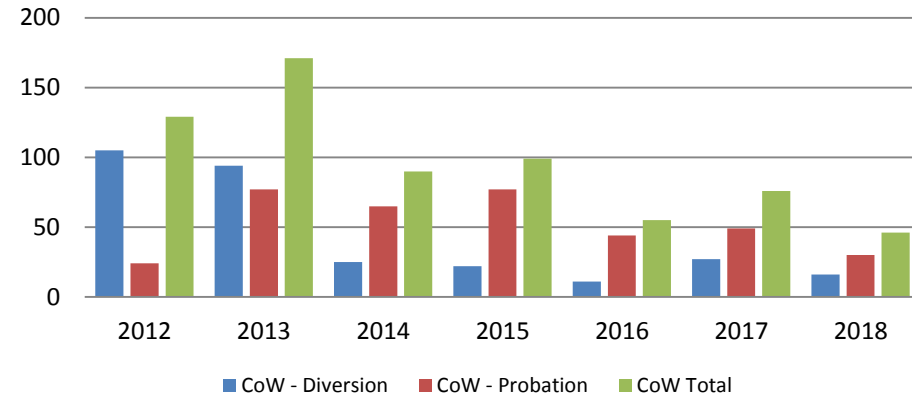
	2013	2014	2015	2016	2017	2018
Muni. Court	73	74	66	48	32	38
Muni. Court YTD Avg.	68	76	70	48	34	39



Drug Court - City of Wichita ADP: April 2016- present



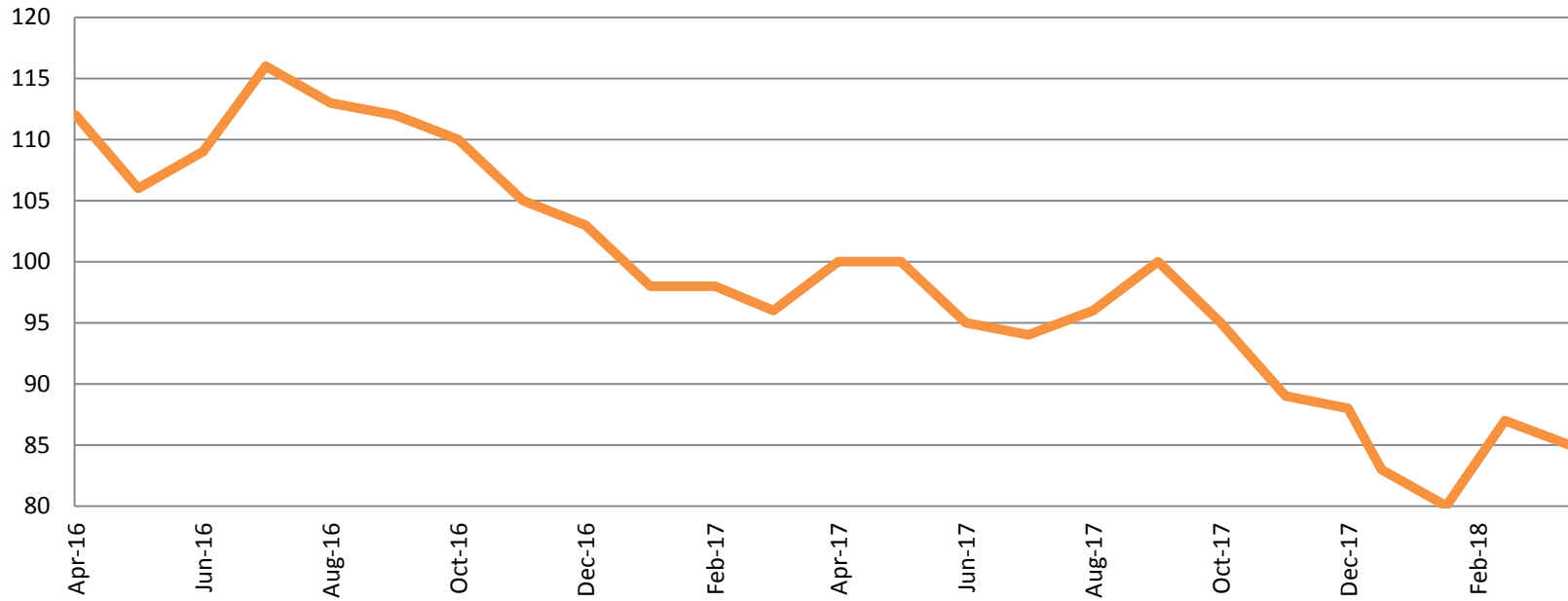
Drug Court- City of Wichita Year over Year- April



April	2016	2017	2018
Diversion	11	27	16
Probation	44	49	30
Total	55	76	46

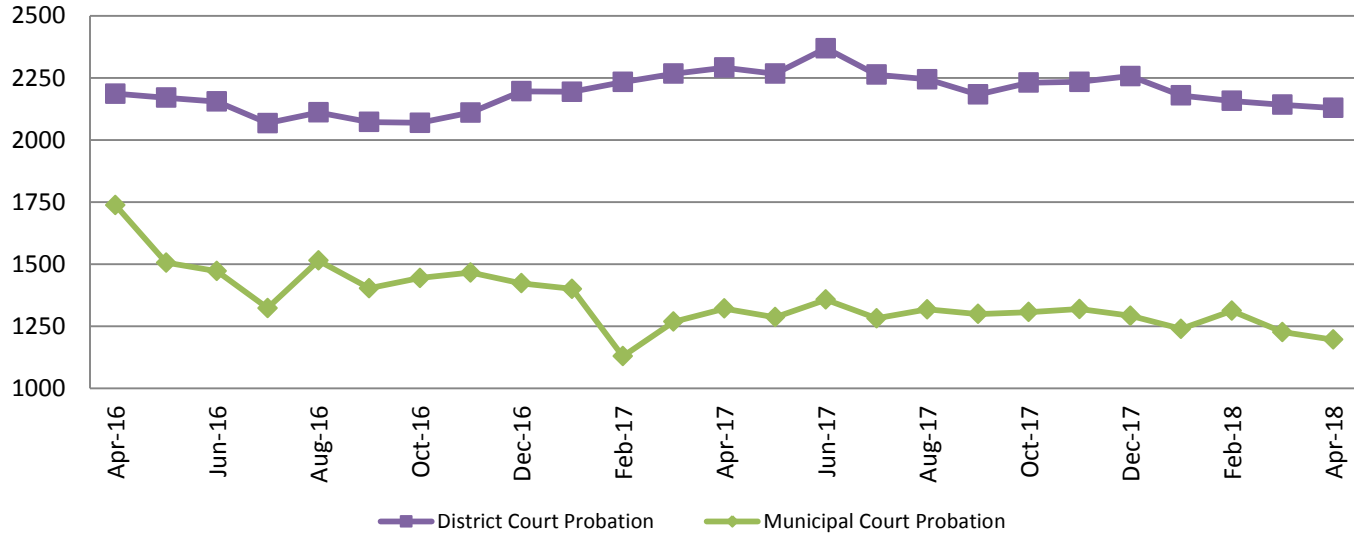


Drug Court - Sedgwick County ADP: April 2016 - present



	April	2016	2017	2018
Sedg. Co. ADP	112	100	100	85
YTD Avg.	109	98	98	84

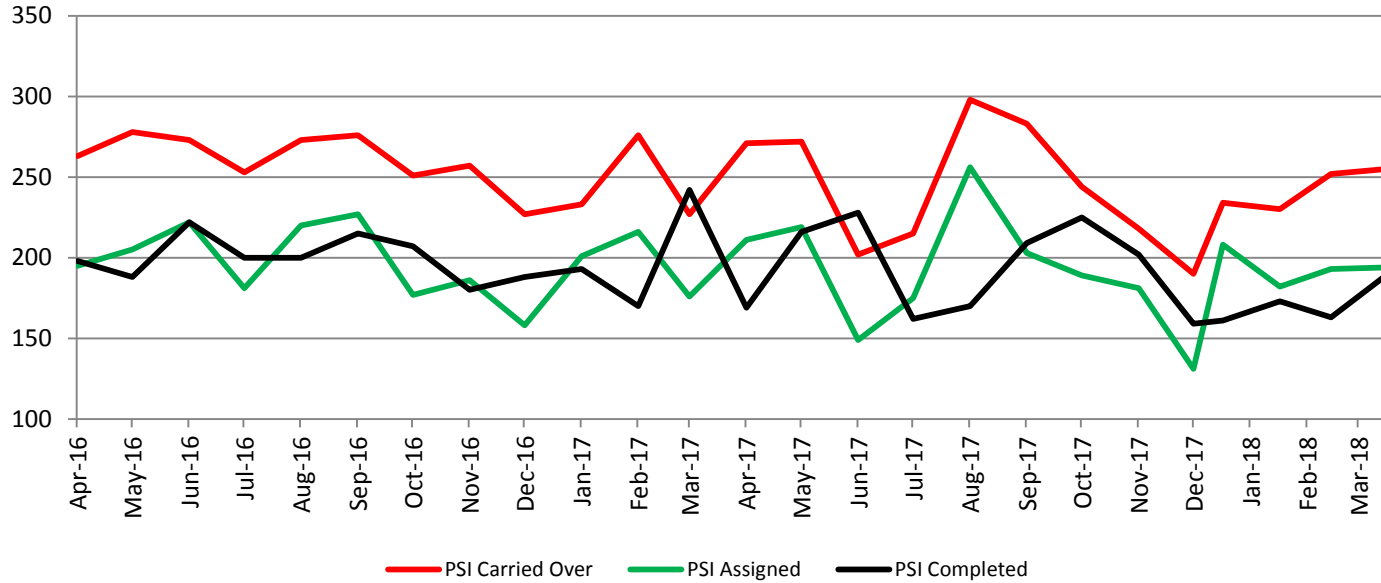
Probation - Active Caseloads April 2016 - present



April	2016	2017	2018	2016 YTD Avg.	2017 YTD Avg.	2018 YTD Avg.
Dist. Court Probation	2186	2291	2129	2252	2246	2152
Muni. Court Probation	1737	1321	1196	1597	1280	1243



District Court Probation: Pre-Sentence Investigation April 2016 - present

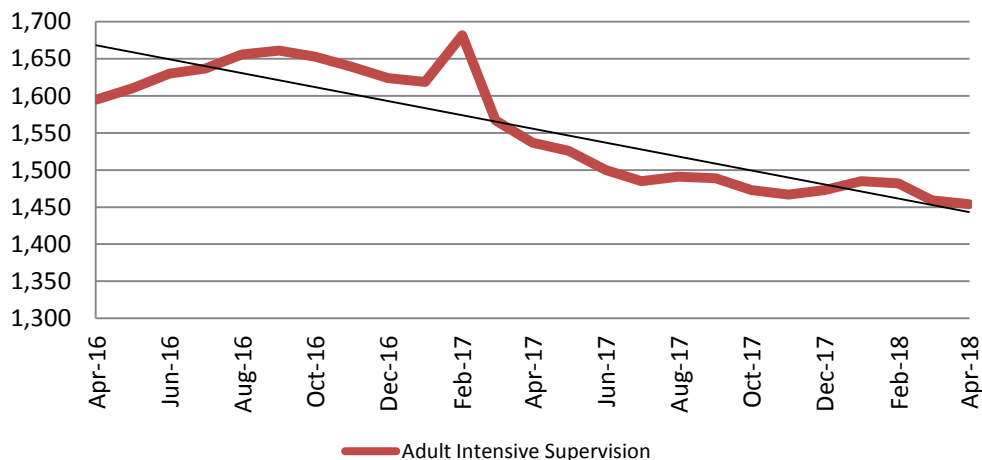


	April	2016	2017	2018
Carried Over		263	271	255
Assigned		195	211	194
Completed		198	169	190



Community Corrections

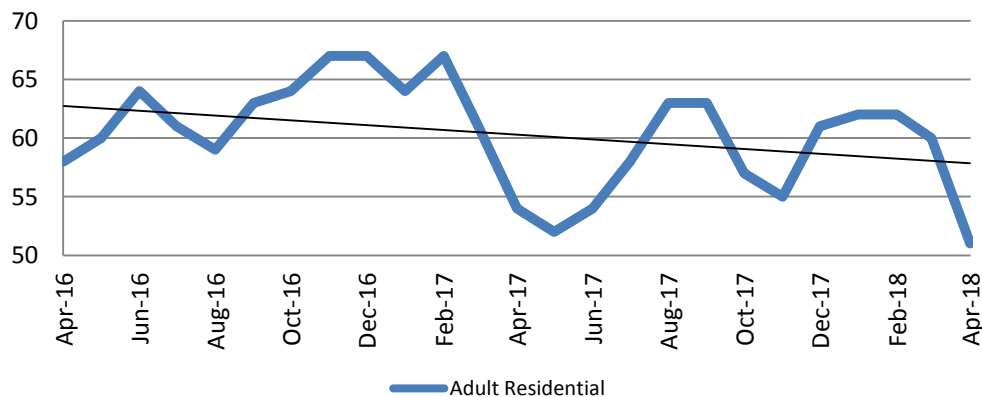
Adult Intensive Supervision Probation (AISP) ADP
April 2016- present



Year	April	April YTD Avg.
2016	1,595	1,608
2017	1,537	1,601
2018	1,454	1,470

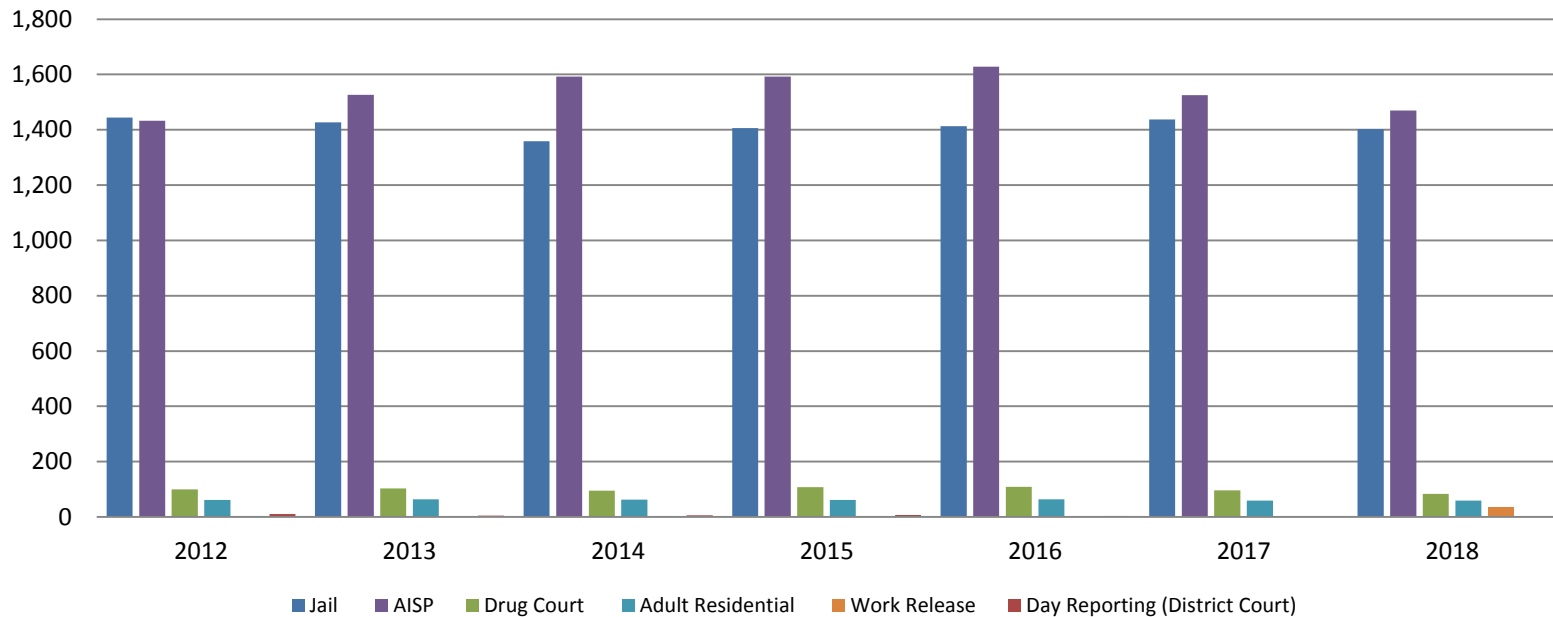
Year	April	April YTD Avg.
2016	58	64
2017	54	62
2018	51	59

Adult Residential: ADP
April 2016- present



Correlation: Total & Sedgwick County Programs (Adult)

Total Annual ADP 2012-Present



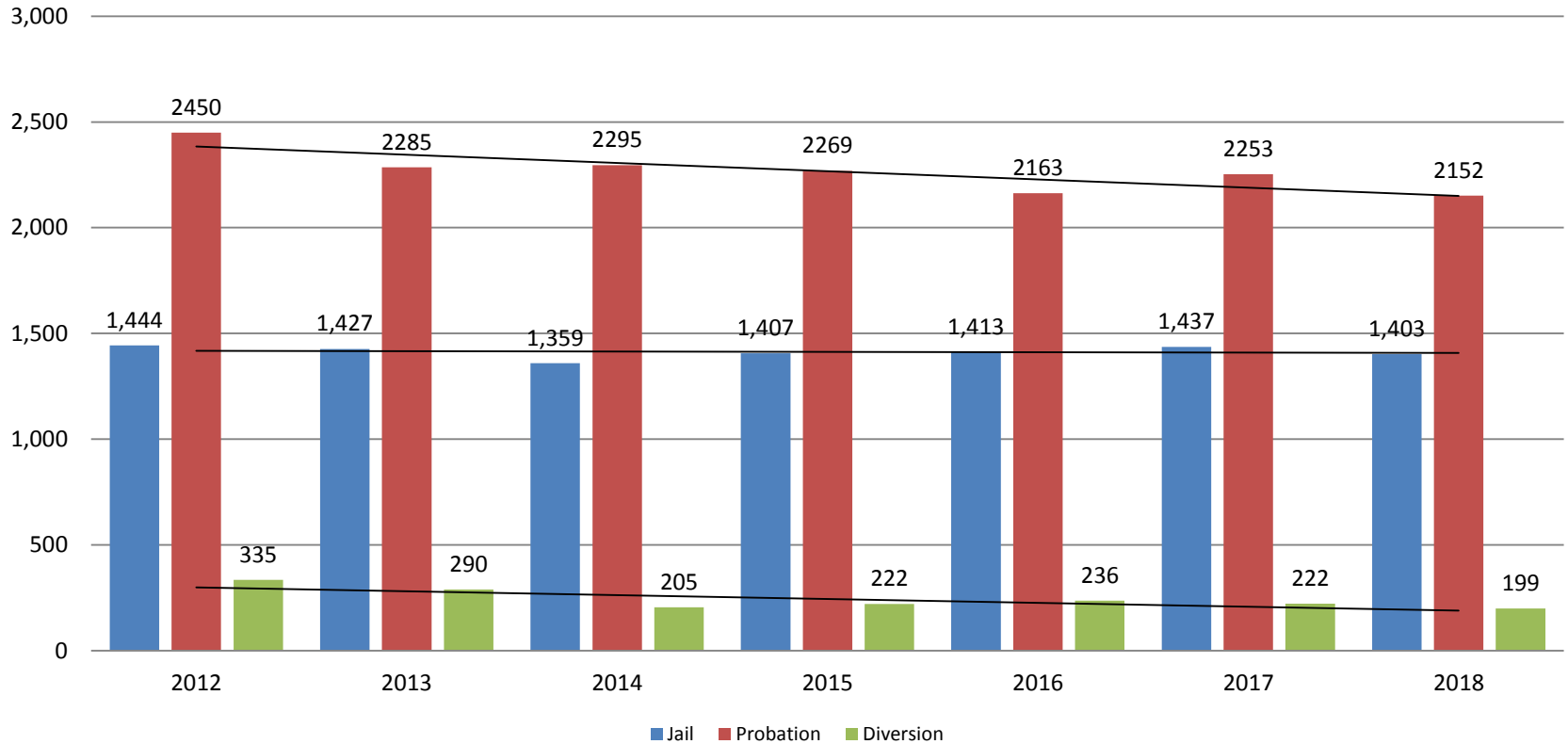
	2016	2017	2018
Jail	1,413	1,437	1,403
AISP	1,629	1,526	1,470
Drug Court	109	96	83
Adult Residential	63	59	59
Work Release	0	0	34
Day Reporting (DC)	4	0	0



Jail includes individuals in booking, detention, work release and out-of county (combined)
 Sedgwick County... working for you (data obtained from detention facility, SG Dept. of Corrections, Pretrial Services, & CoW)

Correlation: Total & District Court Programs

Total Annual ADP: 2012 - Present

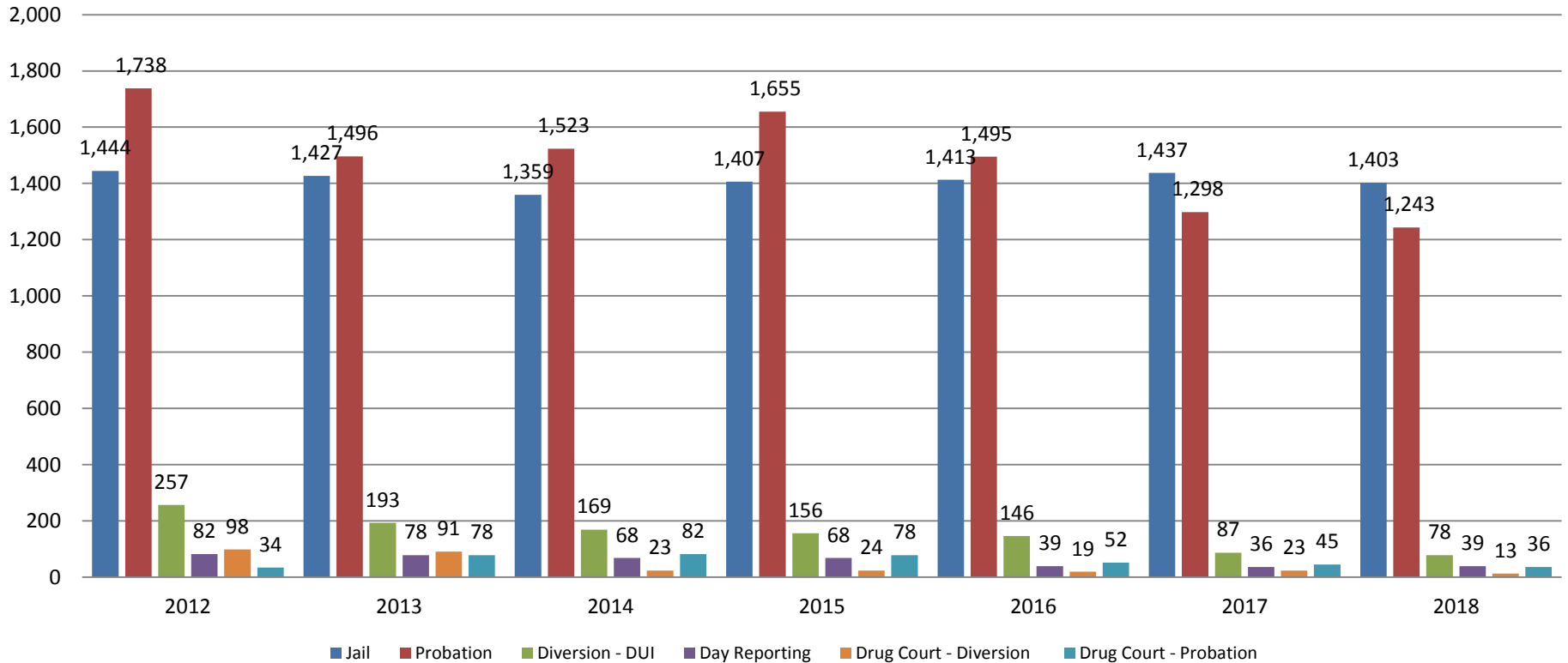


Jail includes individuals in booking, detention, work release and out-of county (combined)



Correlation: Total & City of Wichita / Municipal Court Programs

Total Annual ADP: 2012 - present

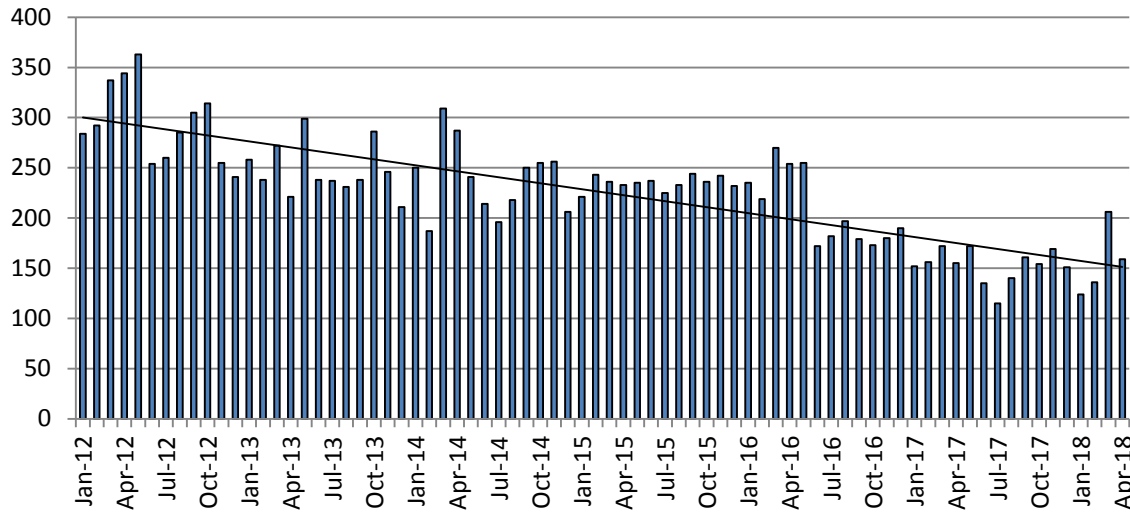


Jail includes individuals in booking, detention, work release and out-of county (combined)



Juvenile

JIAC Intakes: 2012 - present

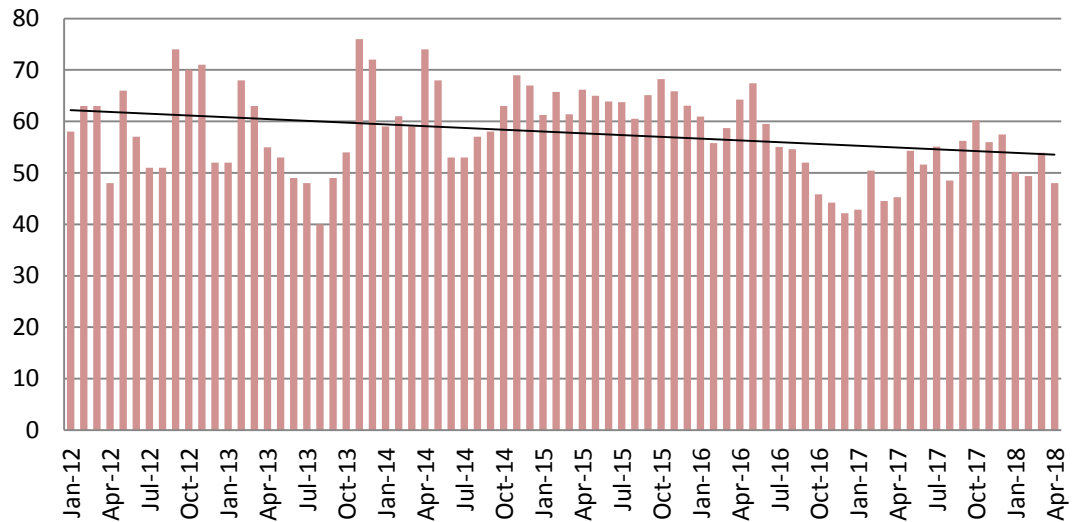


Year	April	April YTD Avg.
2013	221	247
2014	287	258
2015	233	233
2016	254	245
2017	155	159
2018	159	156

Year	April	April YTD Avg.
------	-------	----------------

2013	55	60
2014	74	63
2015	66	64
2016	64	60
2017	45	46
2018	48	50

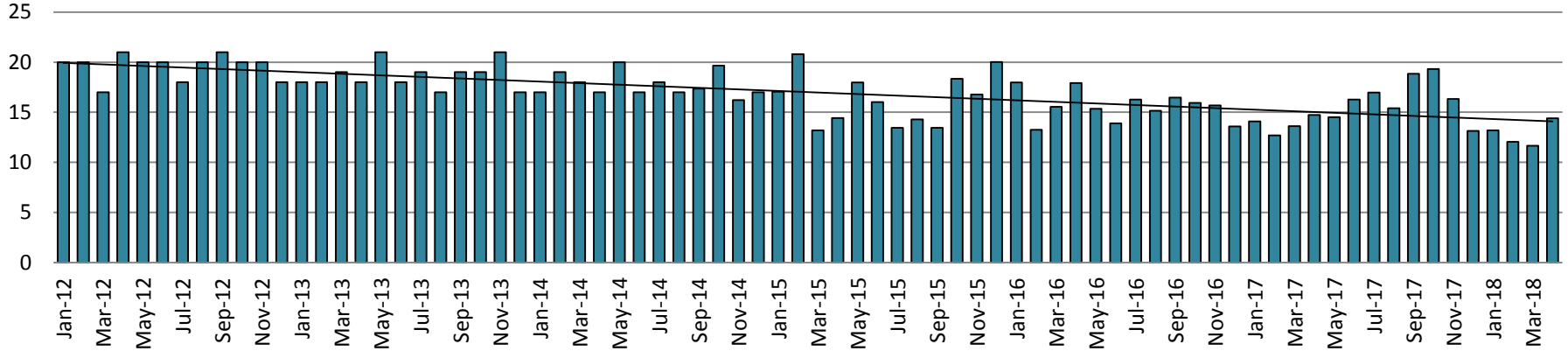
JDF ADP: 2012 - present



Juvenile Detention Alternatives

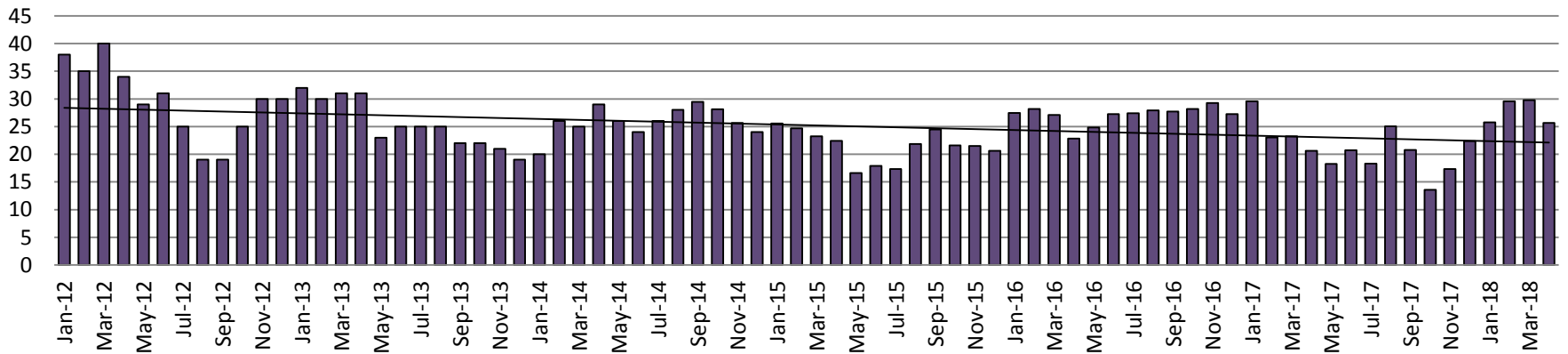
Juvenile Residential Facility (JRF)

ADP: 2012 - present



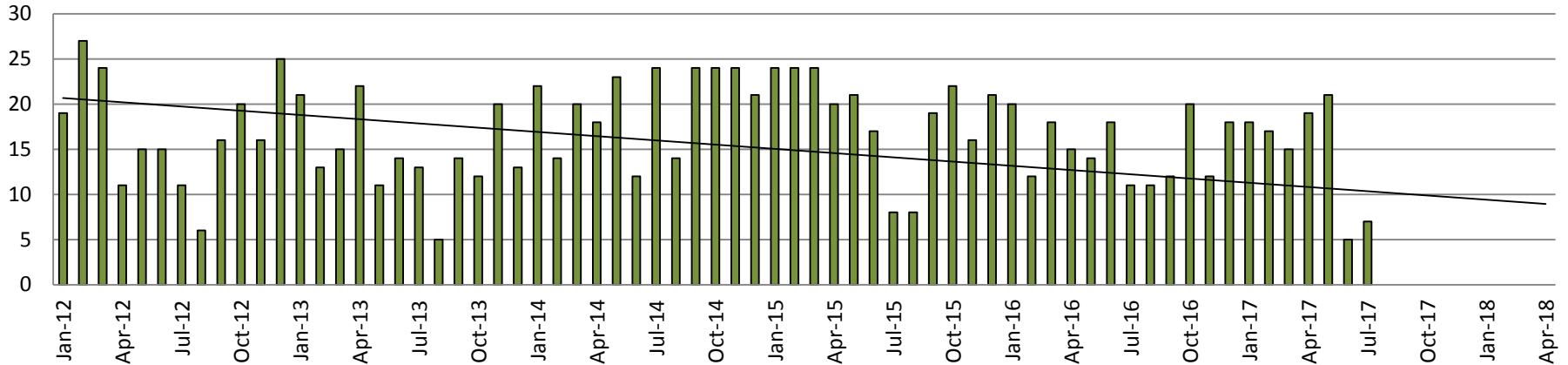
Home-Based Supervision

ADP: 2012 - present

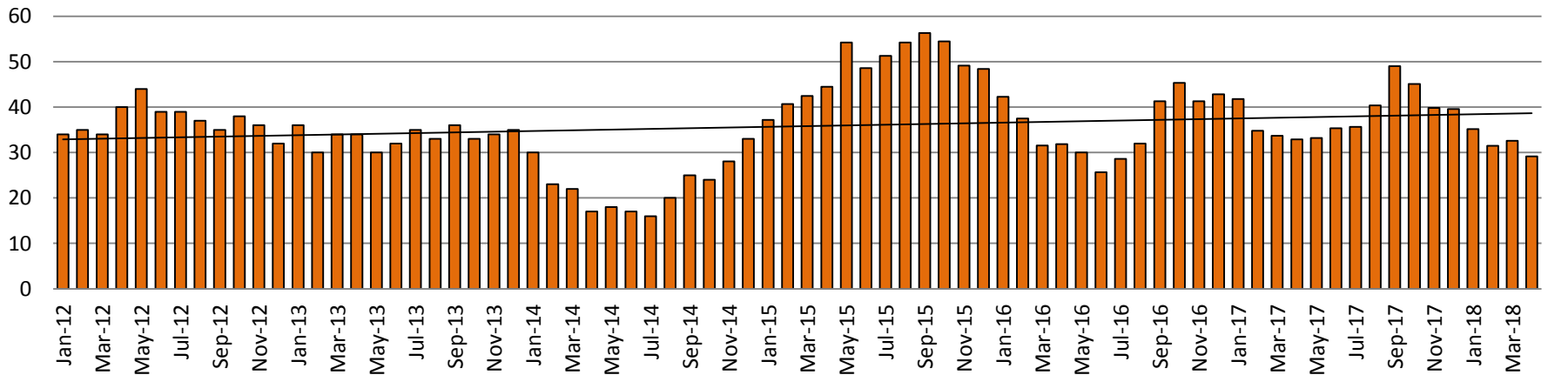


Juvenile Detention Alternatives

Weekend Alternative Detention Program 2012 - present



Detention Advocacy Case Management Services ADP: 2012 - present



Juvenile Detention Services

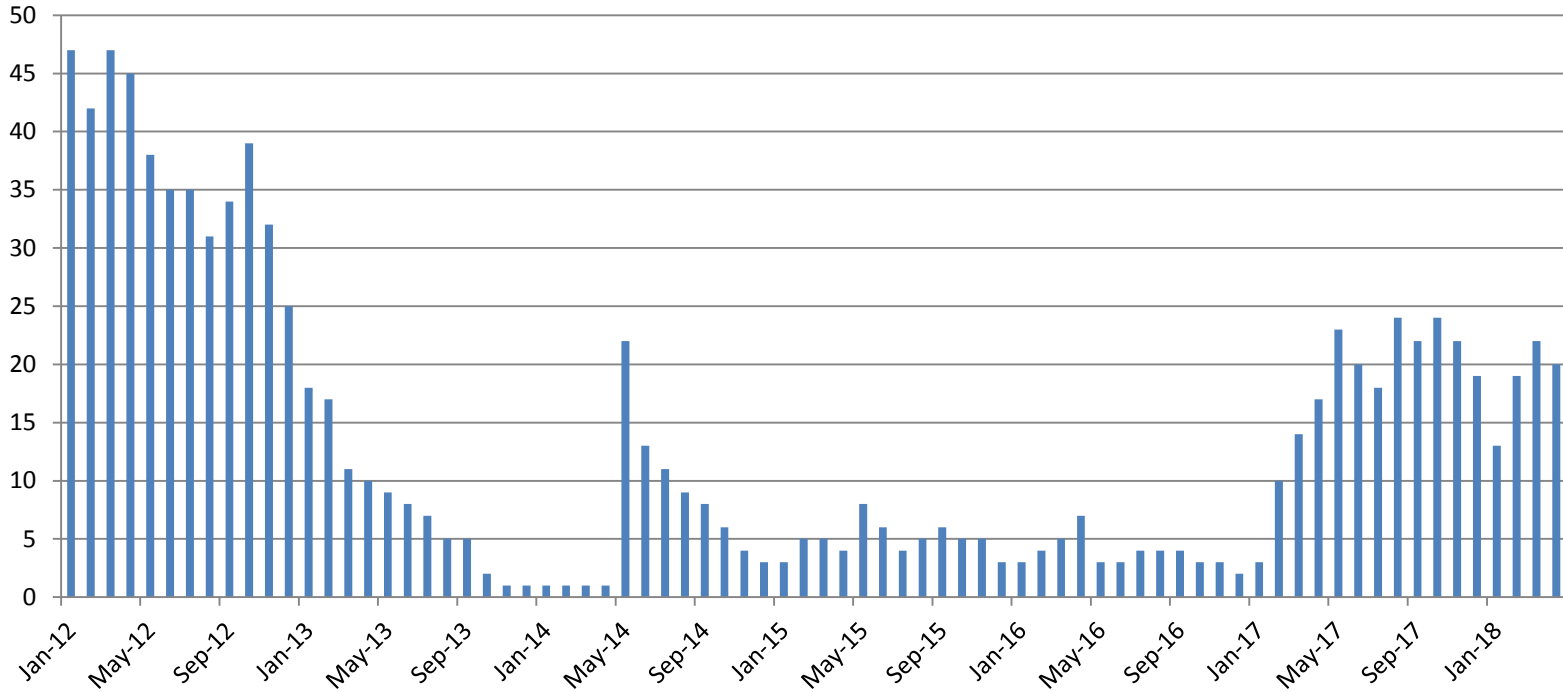
April ADP	2015	2016	2017	2018
Juvenile Detention Facility	66	64	45	48
Juvenile Residential Facility	14	18	15	14
Home Based Supervision	22	23	21	26
Detention Advocacy Case Management Services	45	32	33	29
Weekend Alternative Detention Program (total)	20	15	19	0

April YTD AVERAGE	2015	2016	2017	2018
Juvenile Detention Facility	64	60	46	50
Juvenile Residential Facility	16	16	14	13
Home Based Supervision	24	26	2524	28
Detention Advocacy Case Management Services	41	36	36	32
Weekend Alternative Detention Program	23	16	17	0



Monthly Jail Snapshot: April 30, 2018

BICE Holds 2012-Present

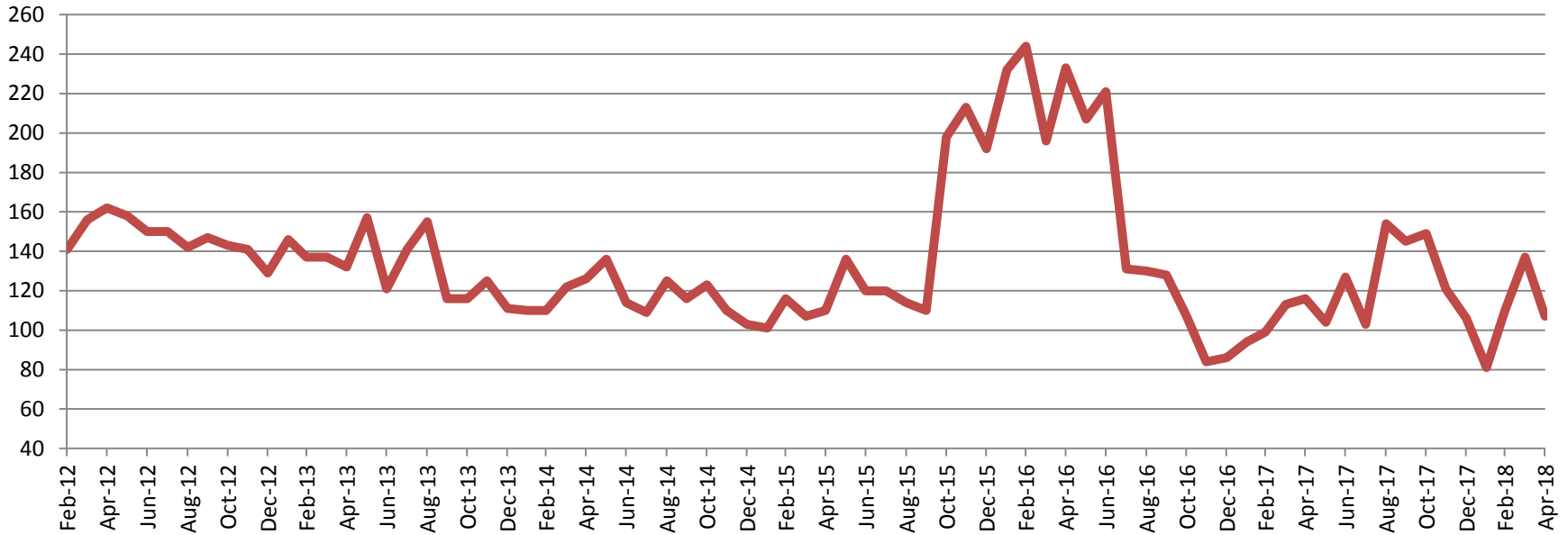


2013	2014	2015	2016	2017	2018
10	1	4	7	17	20



Monthly Jail Snapshot: April 30, 2018

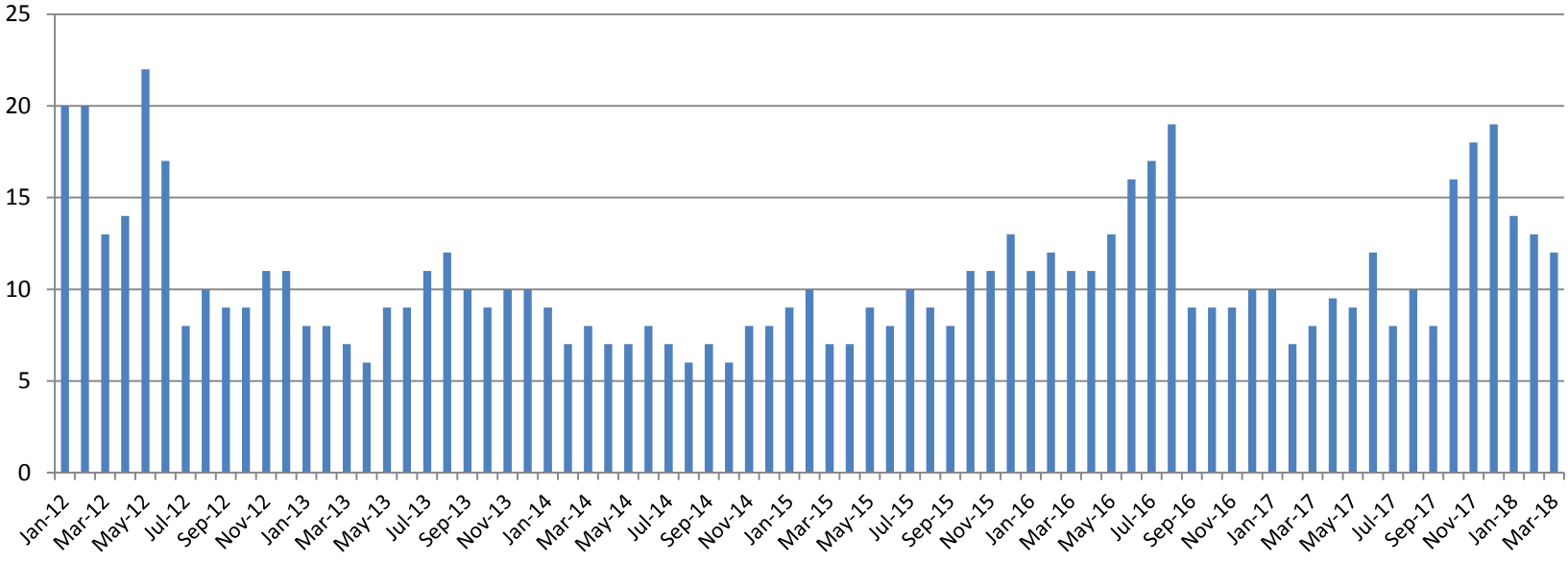
Felony Commitments: February 2012 - present



2013	2014	2015	2016	2017	2018
132	126	110	233	116	107



Journal Entry Completion (Average Days) January 2013-Present



March	2013	2014	2015	2016	2017	2018
Avg. Days	7	8	7	11	8	12
YTD Avg.	8	8	9	11	8	13

