

Criminal Justice Coordinating Council

Population Report & Program Trends

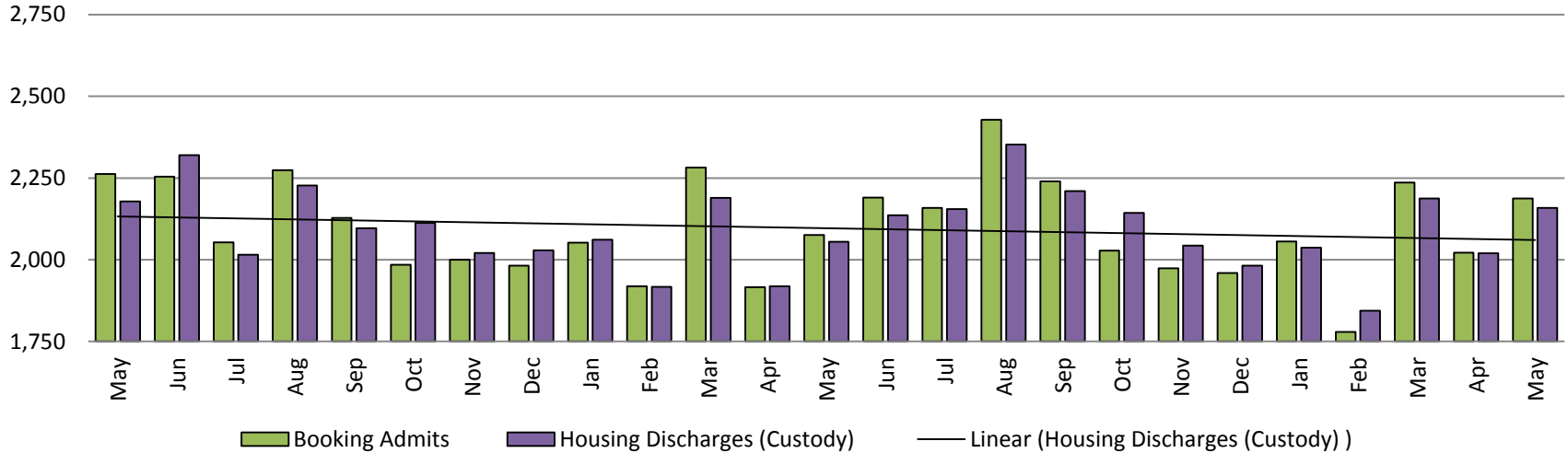
June 2018



Sedgwick County...
working for you

Detention Facility

Booking Admits & Housing Discharges from Custody May 2016-Present



Bookings Year over Year: Month of May



Bookings May

Housing Discharges May

2016: 2,262

2016: 2,178

2017: 2,076

2017: 2,055

2018: 2,187

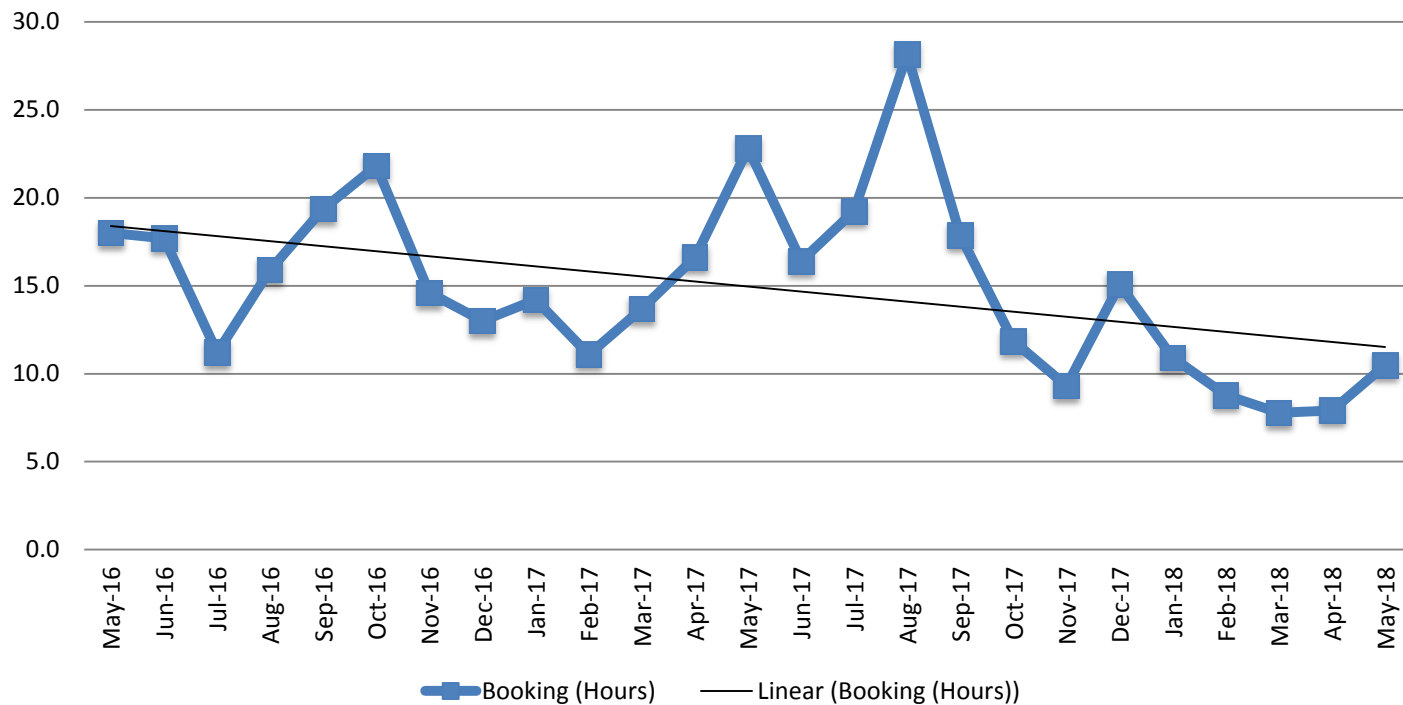
2018: 2,159

(data obtained from detention facility)



Sedgwick County...
working for you

Average Length of Stay: Booking (Hours) May 2016 - Present

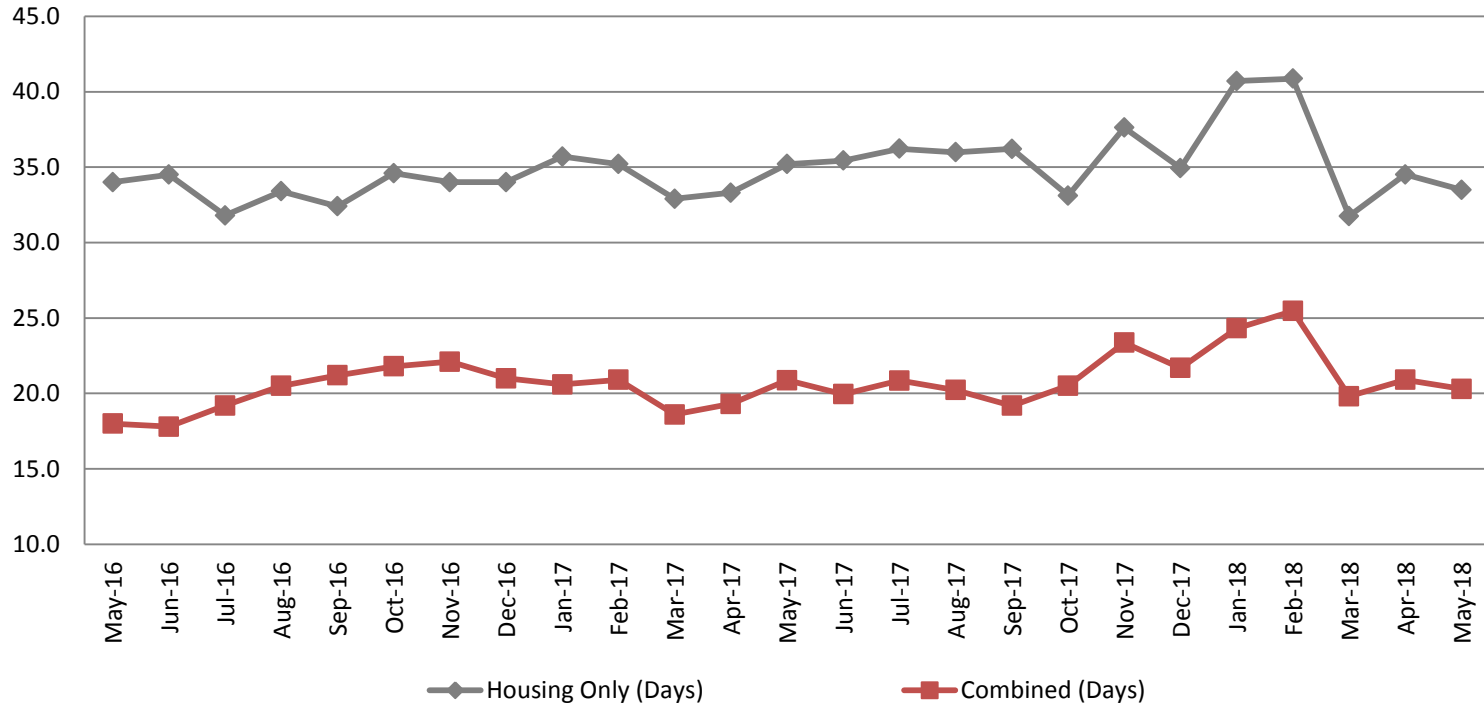


May	May YTD Average
2016: 18.0	2016: 21.0
2017: 22.8	2017: 15.7
2018: 10.5	2018: 9.2



Average Length of Stay: Housing & Combined (Days)

May 2016 - Present



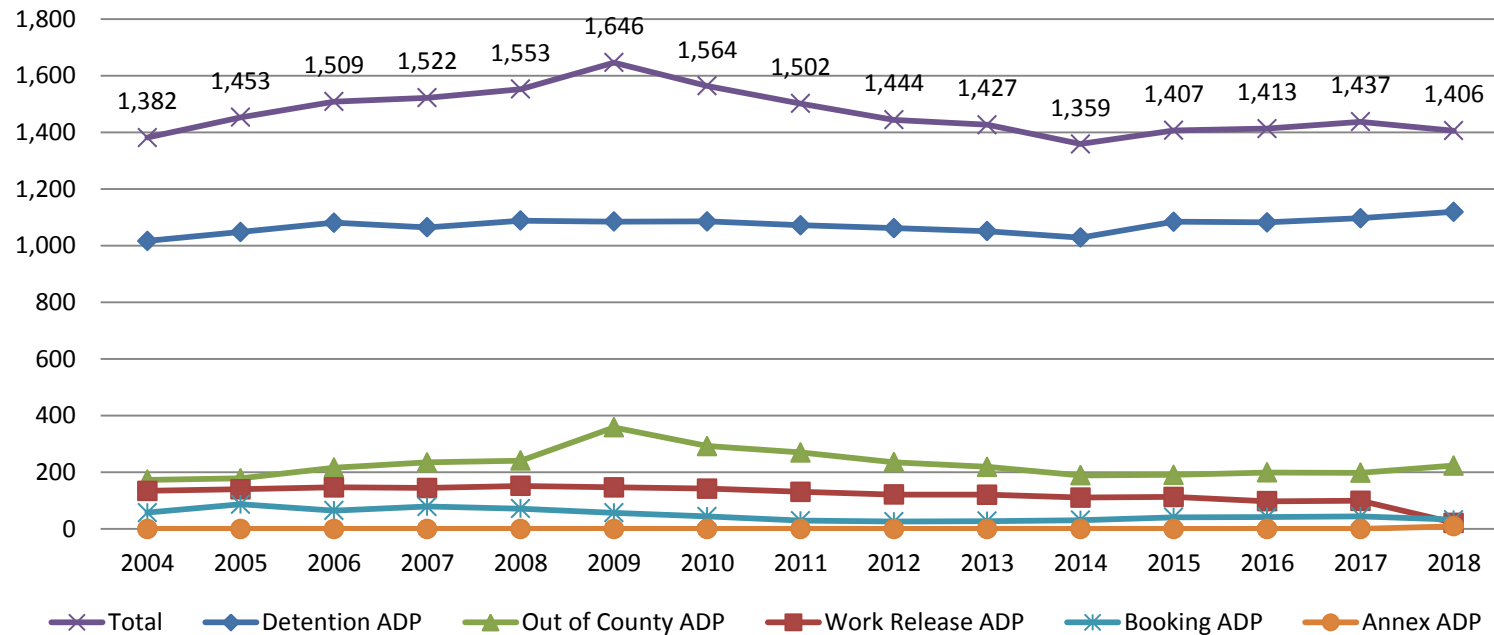
Month, Year	Housing Only	Housing YTD AVG	Combined Days	Combined YTD AVG
May 2016	34.0	36.6	18.0	19.2
May 2017	35.2	34.5	20.9	20.1
May 2018	33.5	36.3	20.3	22.2

(data obtained from detention facility)



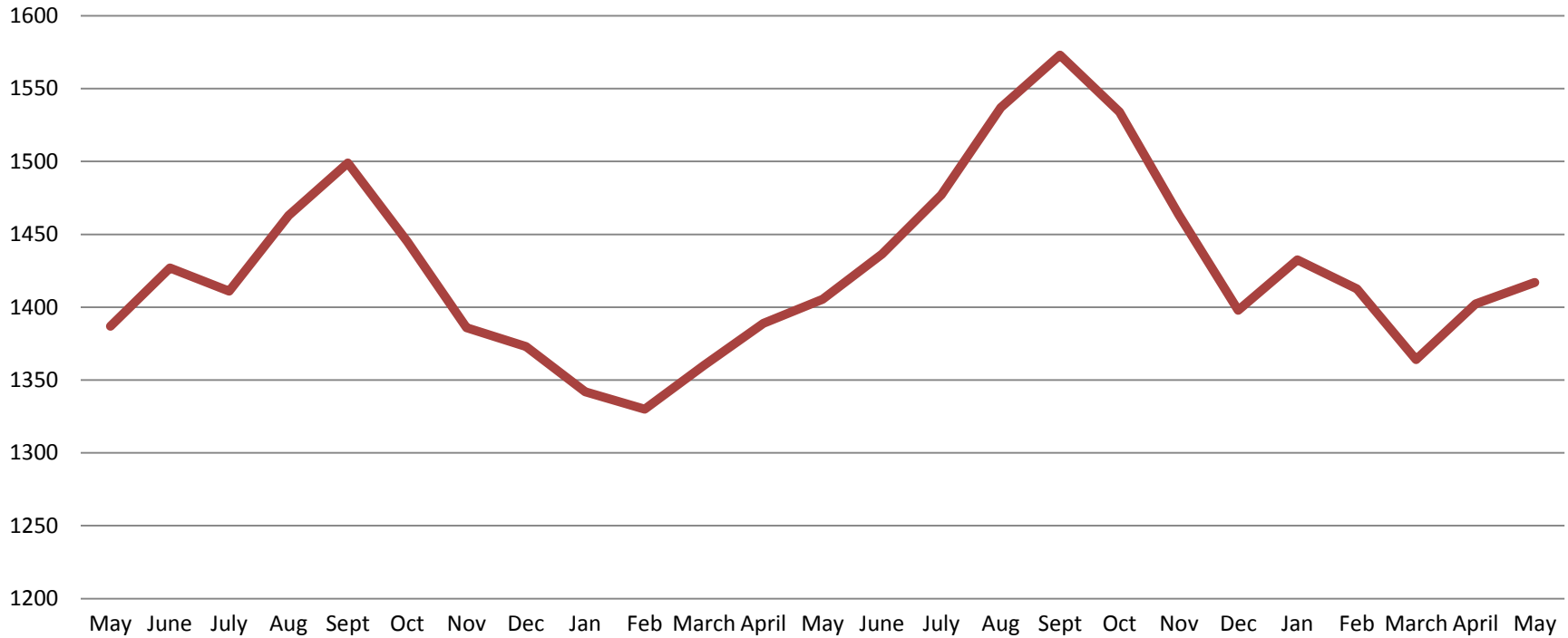
Jail: Annual Average Daily Population (ADP)

TRENDS: Booking, Detention, Work Release, & Out of County
Annual ADP: 2004 - present



*Beginning January 2018, Work Release program began transfer to Division of Corrections

TOTAL MONTHLY ADP: JAIL (Booking, Detention Facility, Work Release, & Out of County) May 2016 - present

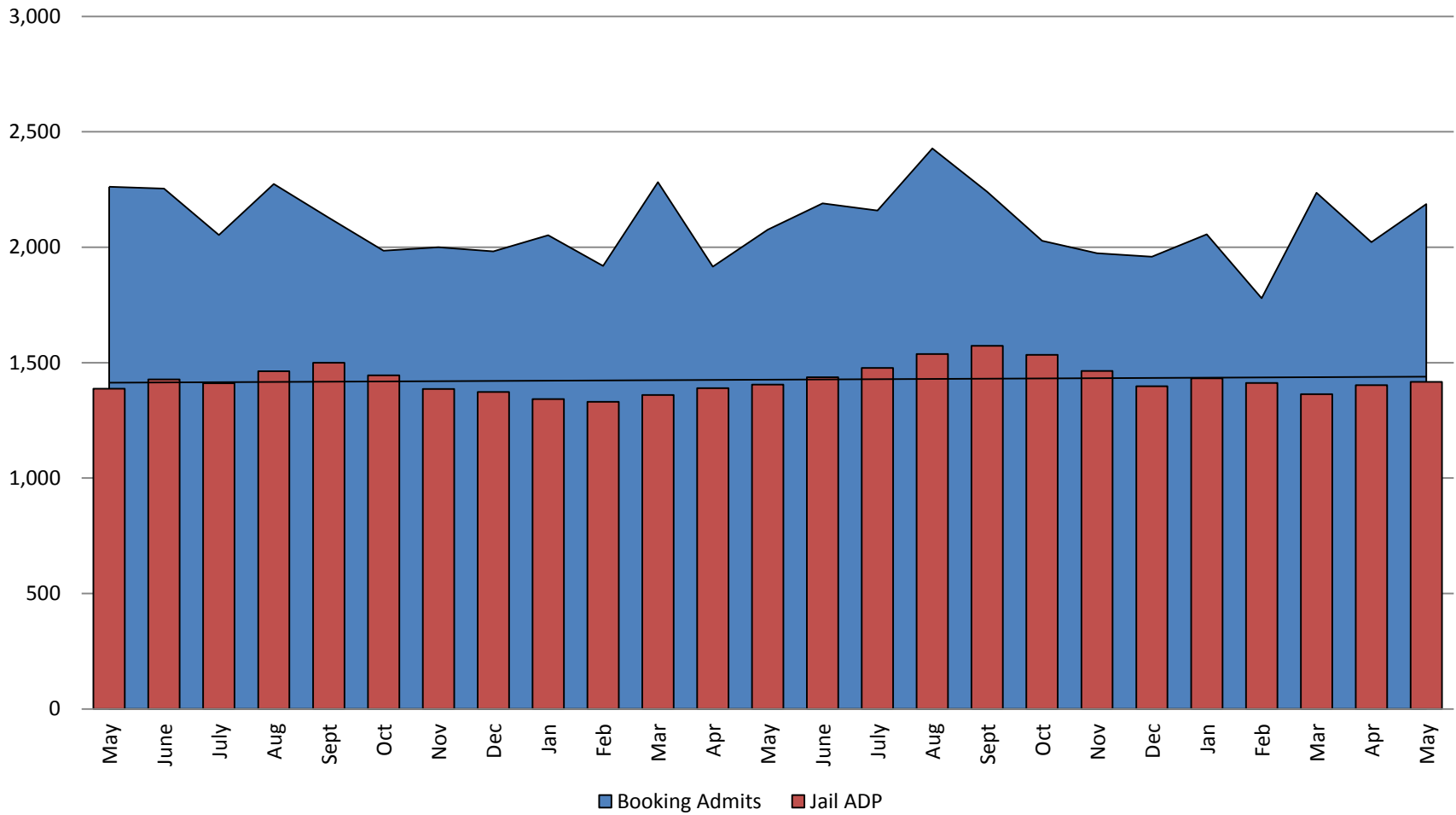


May 2016	May 2017	May 2018
1,387	1,405	1,417

*Beginning January 2018, Work Release program began transfer to Division of Corrections

This slide shows total monthly ADP for individuals in booking, detention, work release, jail annex, and out-of county (combined)
(data obtained from detention facility)

Booking Admits & Total Monthly ADP (Jail): May 2016 - present



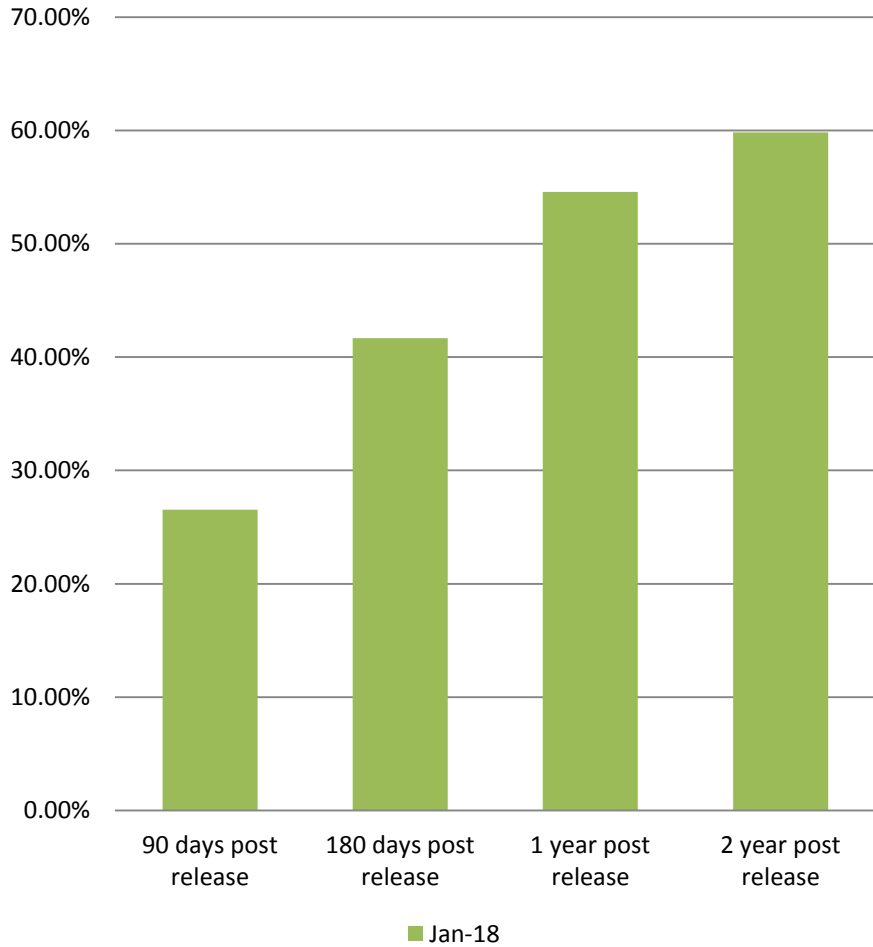
Jail includes individuals in booking, detention, work release and out-of county (combined)

(data obtained from detention facility)



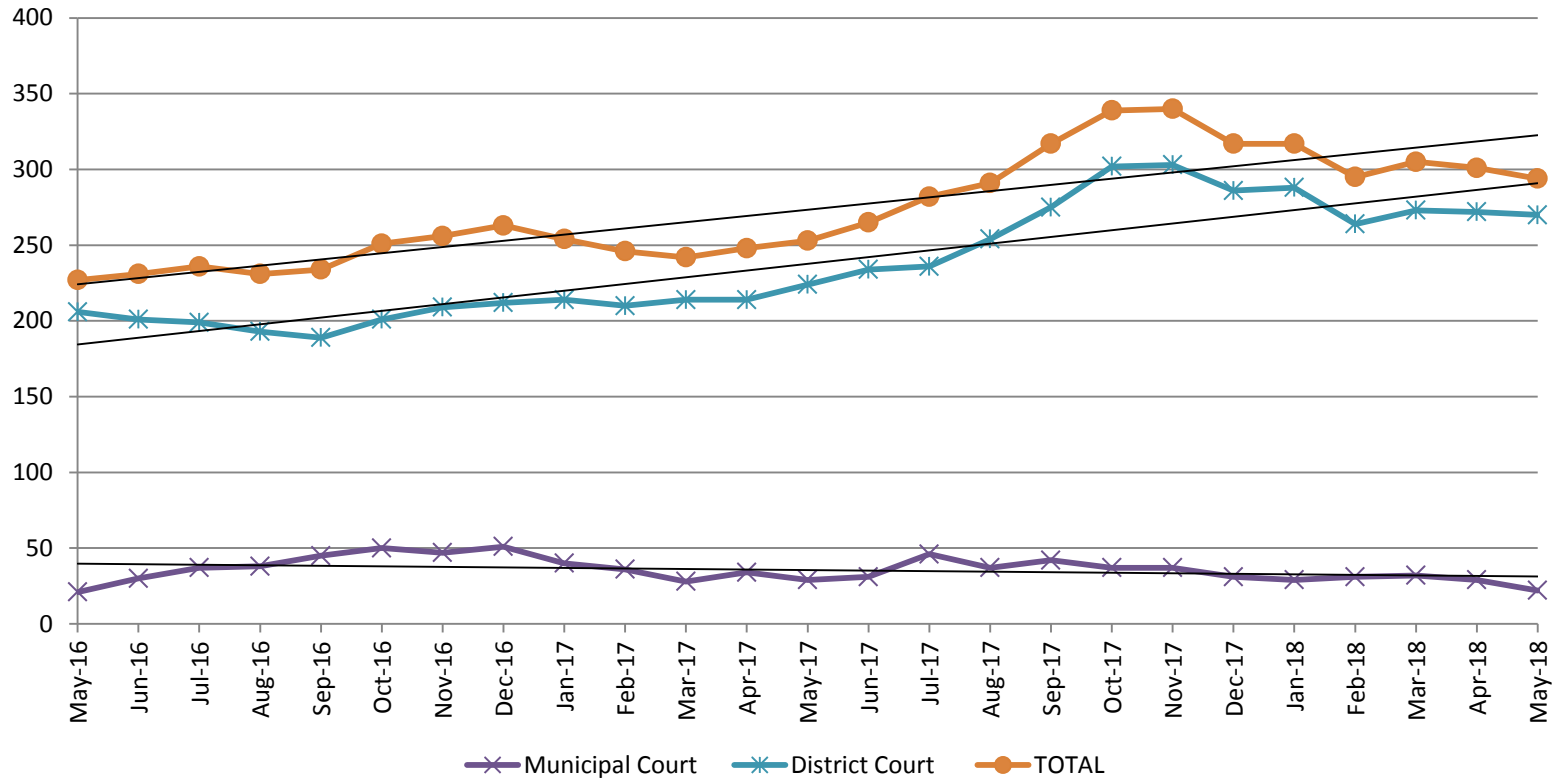
Sedgwick County...
working for you

Percent of released inmates rearrested



Month Year	90 Days	180 Days	1 Year	2 Years
Jan 2018	26.55%	41.67%	54.57%	59.84%
Feb 2018	27.39%	40.22%	54.02%	61.03%
March 2018	28.00%	41.08%	51.69%	60.03%
April 2018	28.13%	39.41%	52.82%	62.93%
May 2018	29.80%	41.88%	52.18%	62.81%

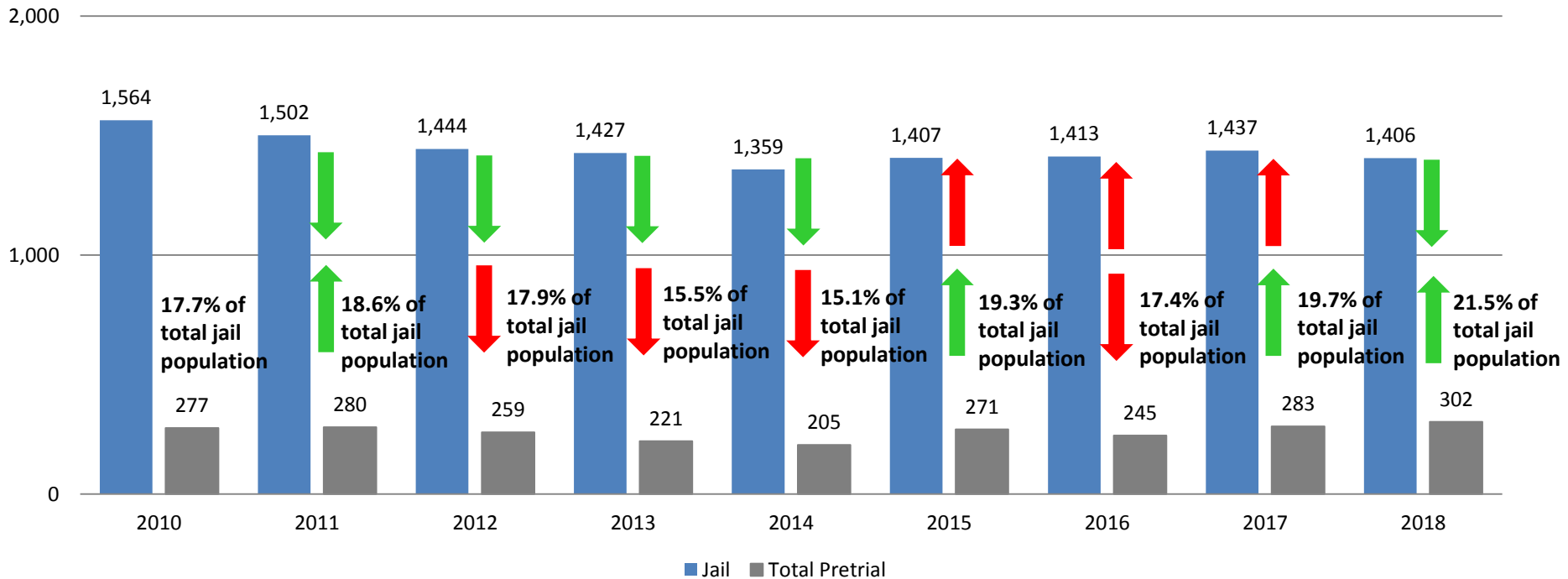
Pretrial Services Program (PSP) Monthly ADP: May 2016 - Present



May	2016 ADP	2017 ADP	2018 ADP	2016 YTD Avg.	2017 YTD Avg.	2018 YTD Avg.
Muni. Court	21	29	2	30	33	29
Dist. Court	206	224	270	216	215	273
Total	243	253	294	248	249	302

Correlation: Total & PSP

Total Annual ADP: 2010 - Present

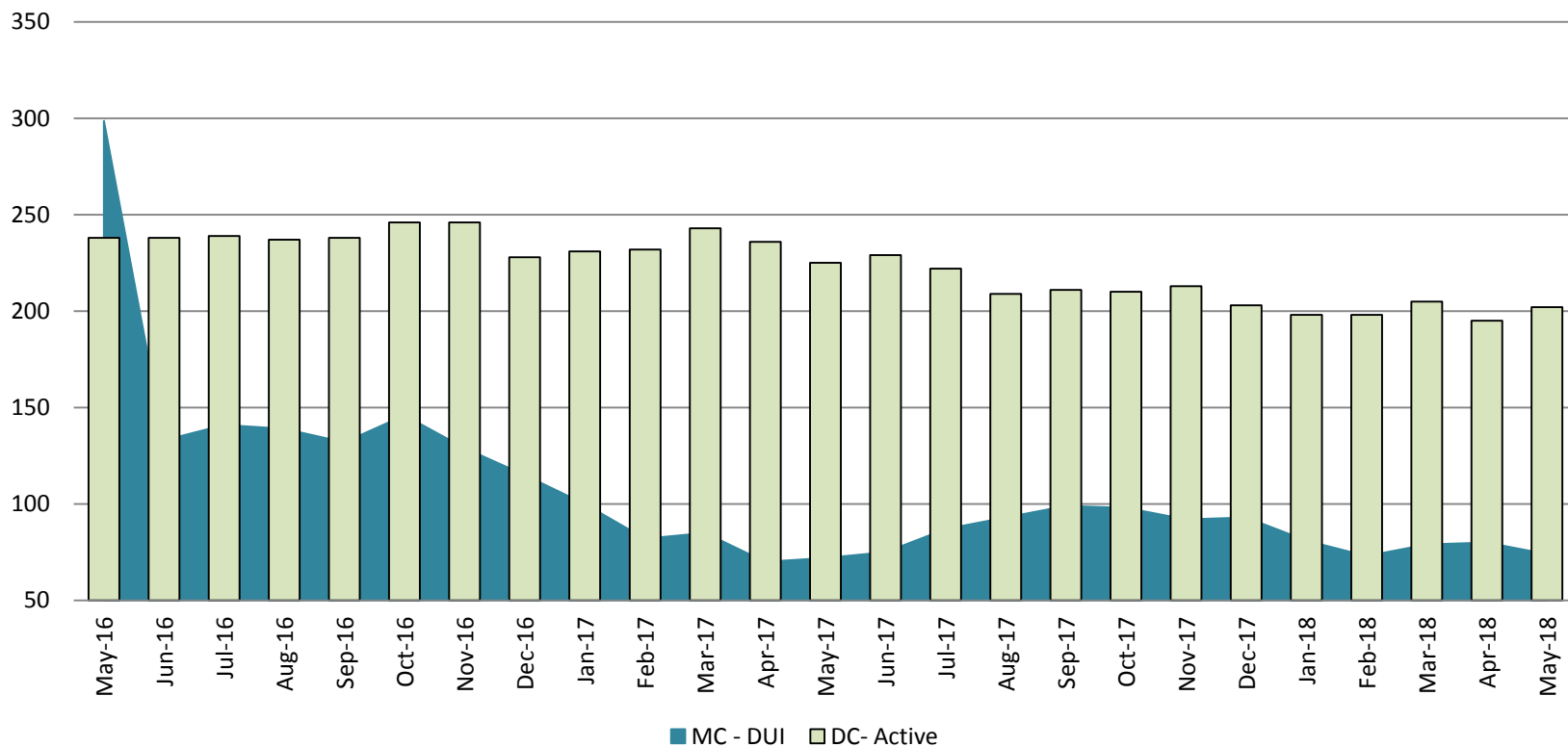


Arrows represent the overall increase/decrease of the population from year to year

Jail includes individuals in booking, detention, work release and out-of county (combined)

Diversion - Active Caseload

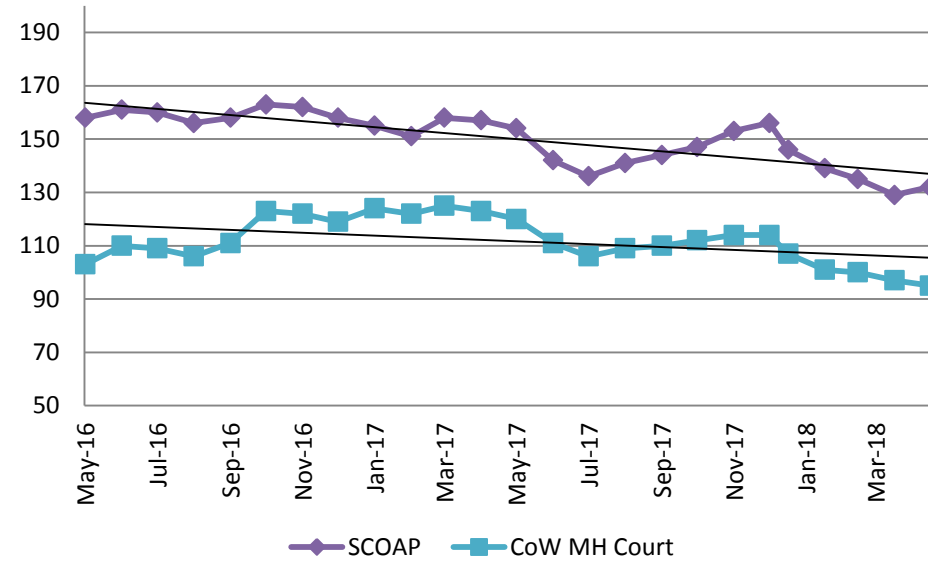
May 2016 - Present



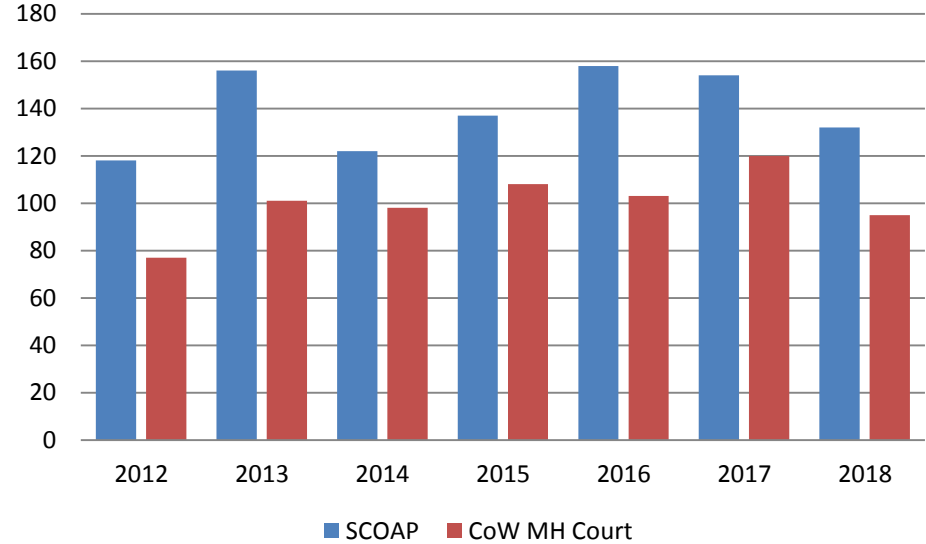
May	2016	2017	2018	2016 YTD Avg.	2017 YTD Avg.	2018 YTD Avg.
Muni. Court- DUI	299	72	74	164	82	77
Dist. Court- Active	238	225	202	233	233	200



Mental Health - ADP May 2016 - present

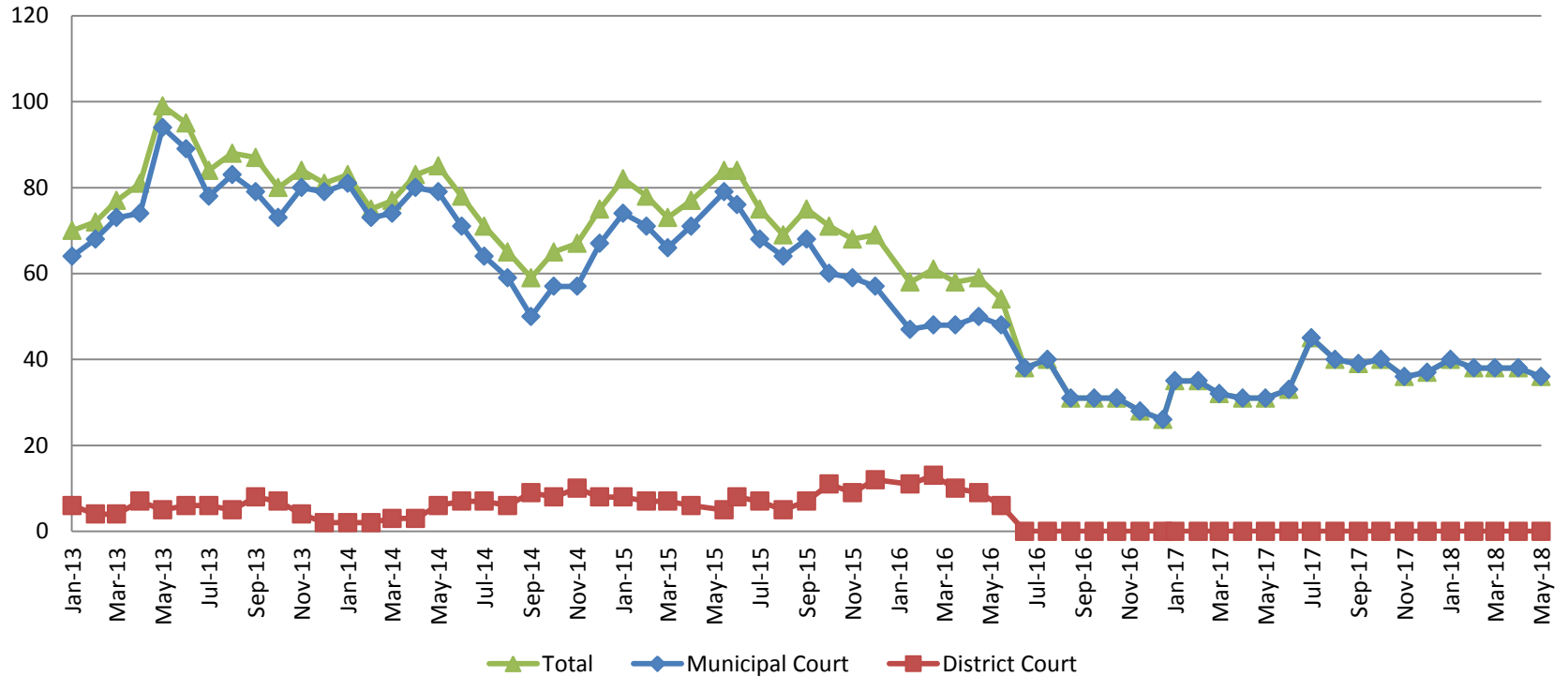


Mental Health ADP Year over Year- May



May	2016 ADP	2017 ADP	2018 ADP	2016 YTD Avg.	2017 YTD Avg.	2018 YTD Avg.
SCOAP	158	154	132	158	155	136
MH Court	103	120	95	99	123	100

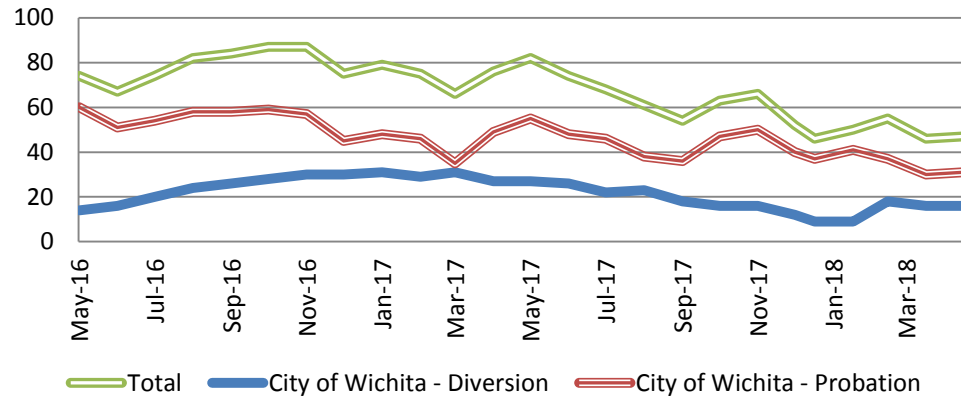
Day Reporting - Active Caseload 2013-present



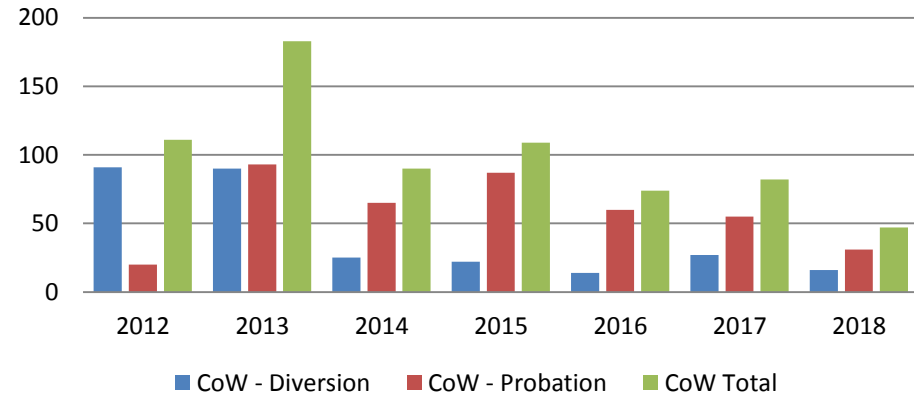
	May	2013	2014	2015	2016	2017	2018
Muni. Court	94	79	79	48	31	36	
Muni. Court YTD Avg.	75	77	72	48	33	38	



Drug Court - City of Wichita ADP: May 2016- present



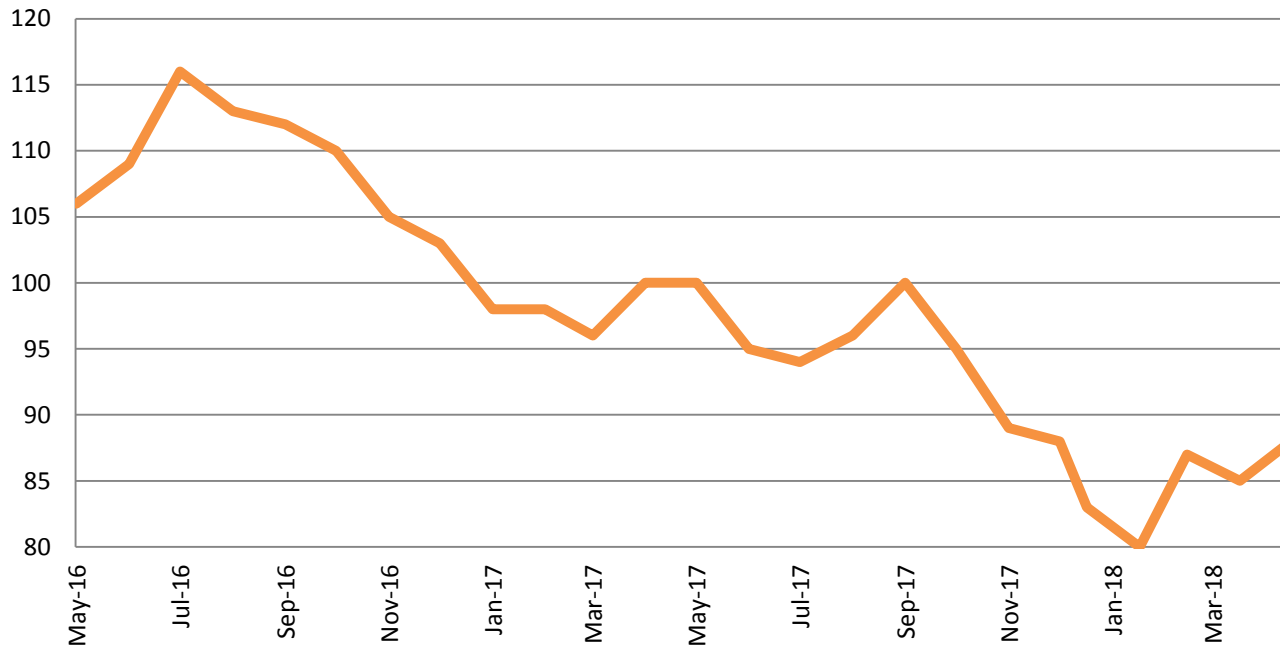
Drug Court- City of Wichita Year over Year- May



May	2016	2017	2018
Diversion	14	27	16
Probation	60	55	31
Total	74	82	47



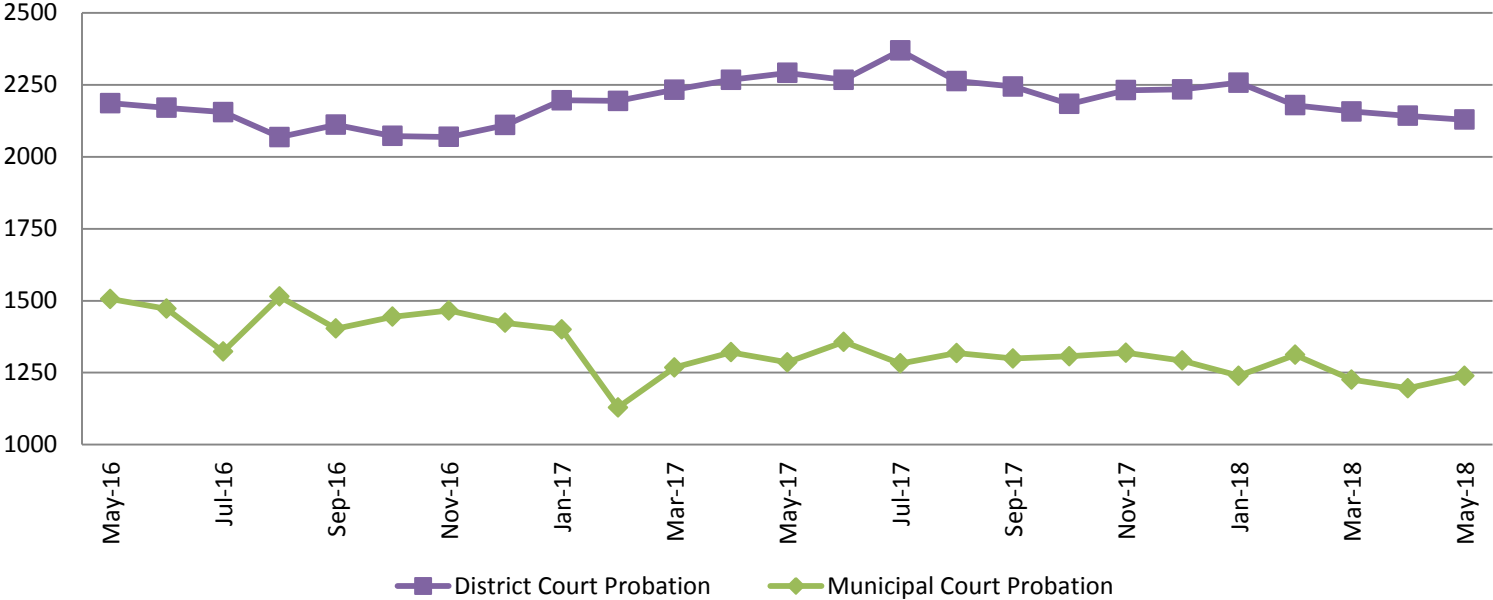
Drug Court - Sedgwick County ADP: May 2016 - present



	May	2016	2017	2018
Sedg. Co. ADP		106	100	88
YTD Avg.		109	98	85

Probation - Active Caseloads

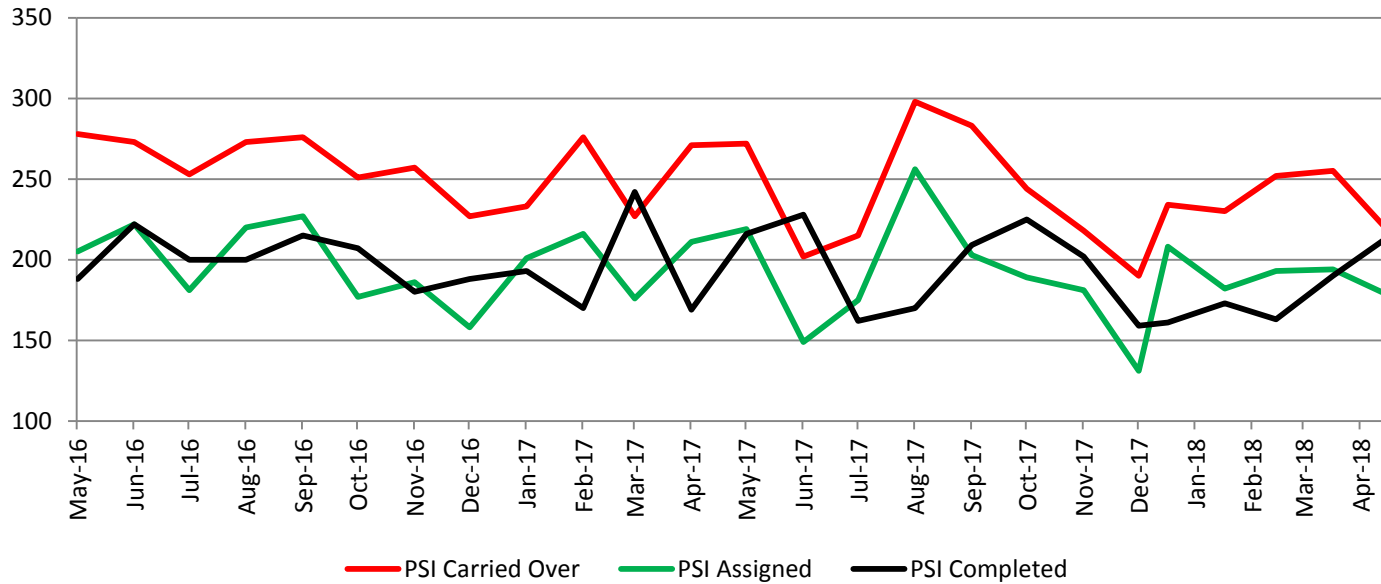
May 2016 - present



May	2016	2017	2018	2016 YTD Avg.	2017 YTD Avg.	2018 YTD Avg.
Dist. Court Probation	2170	2267	2117	2235	2250	2145
Muni. Court Probation	1506	1286	1239	1579	1281	1242



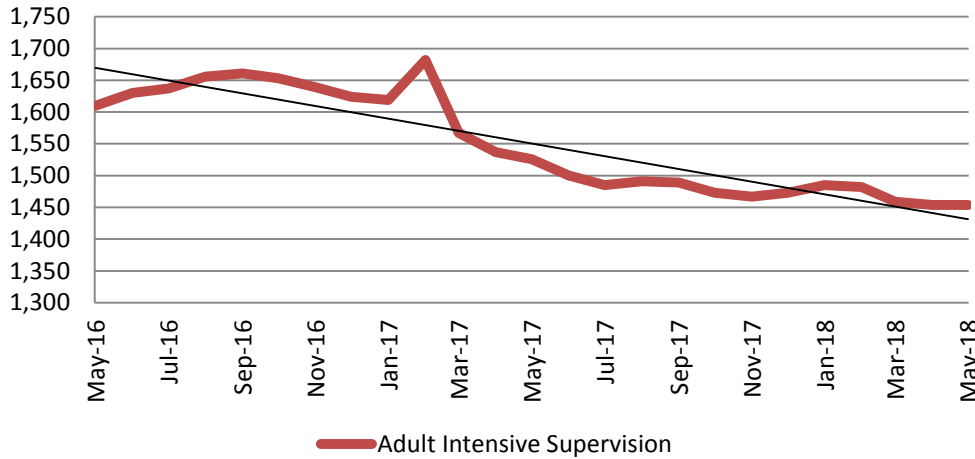
District Court Probation: Pre-Sentence Investigation May 2016 - present



May	2016	2017	2018
Carried Over	278	272	218
Assigned	205	219	178
Completed	188	216	214

Community Corrections

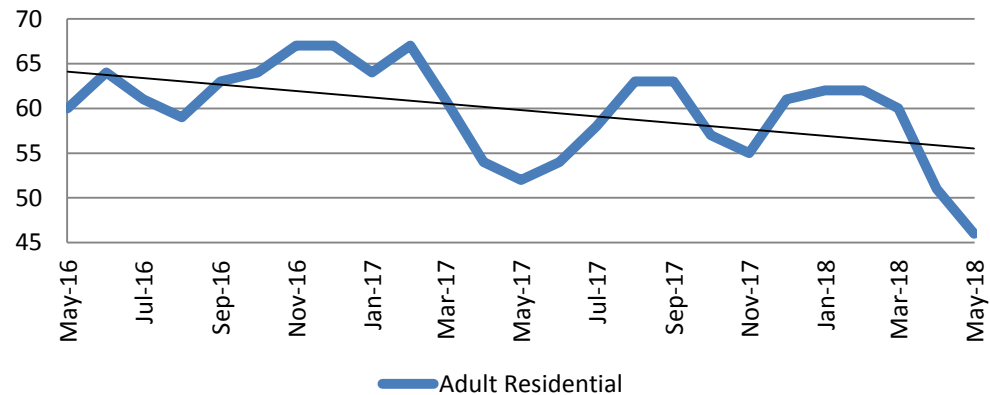
Adult Intensive Supervision Probation (AISP) ADP
May 2016- present



Year	May	May YTD Avg.
2016	1,610	1,608
2017	1,526	1,586
2018	1,454	1,467

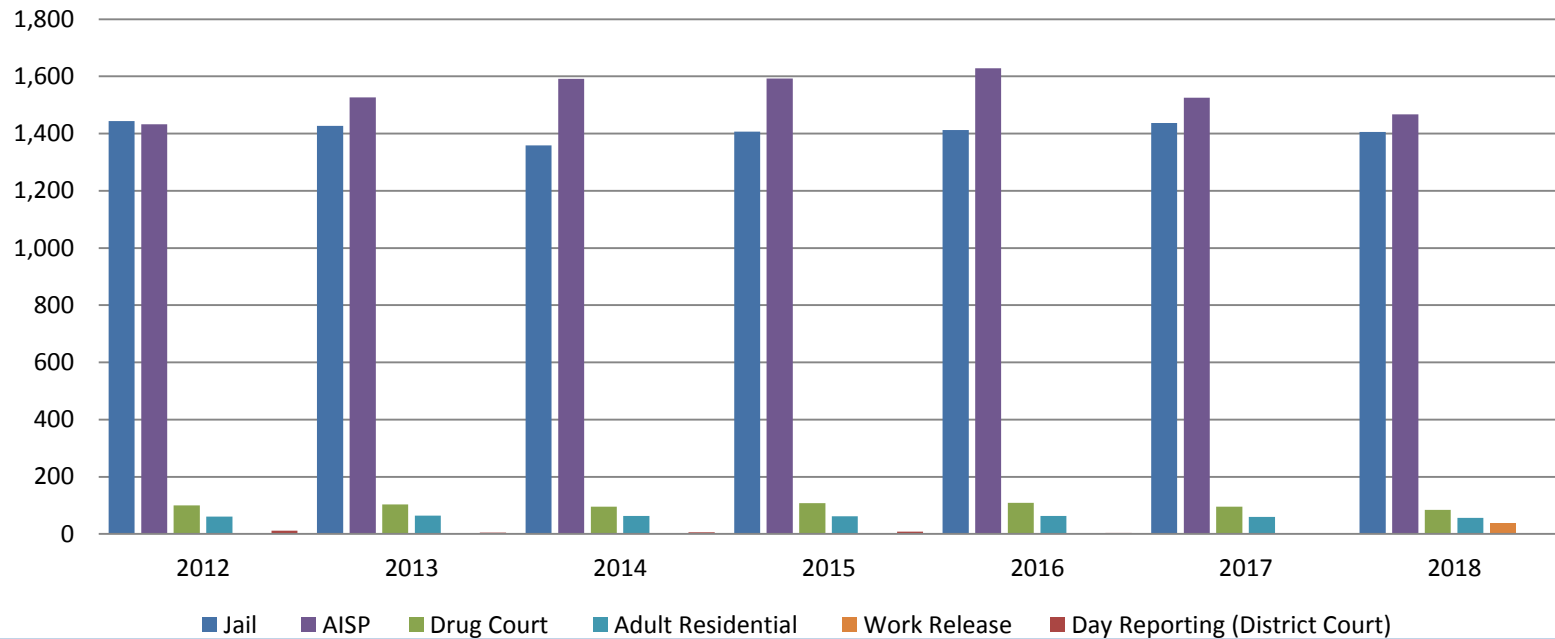
Year	May	May YTD Avg.
2016	60	63
2017	52	60
2018	46	56

Adult Residential: ADP
May 2016- present



Correlation: Total & Sedgwick County Programs (Adult)

Total Annual ADP 2012-Present



2016 2017 2018

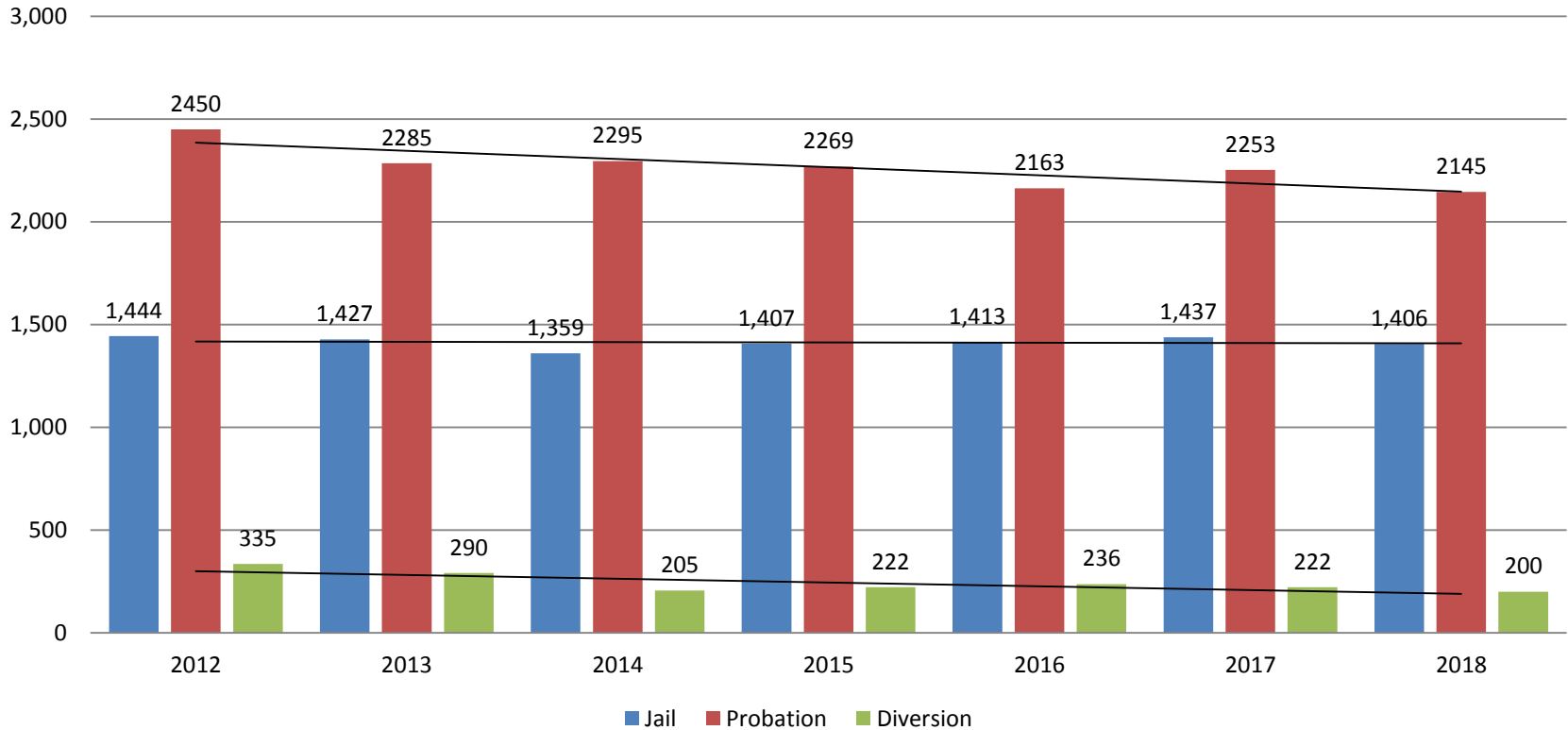
Jail	1,413	1,437	1,406
AISP	1,629	1,526	1,467
Drug Court	109	96	85
Adult Residential	63	59	56
Work Release	0	0	38
Day Reporting (DC)	4	0	0



Jail includes individuals in booking, detention, work release and out-of county (combined)
 Sedgwick County... working for you (data obtained from detention facility, SG Dept. of Corrections, Pretrial Services, & CoW)

Correlation: Total & District Court Programs

Total Annual ADP: 2012 - Present

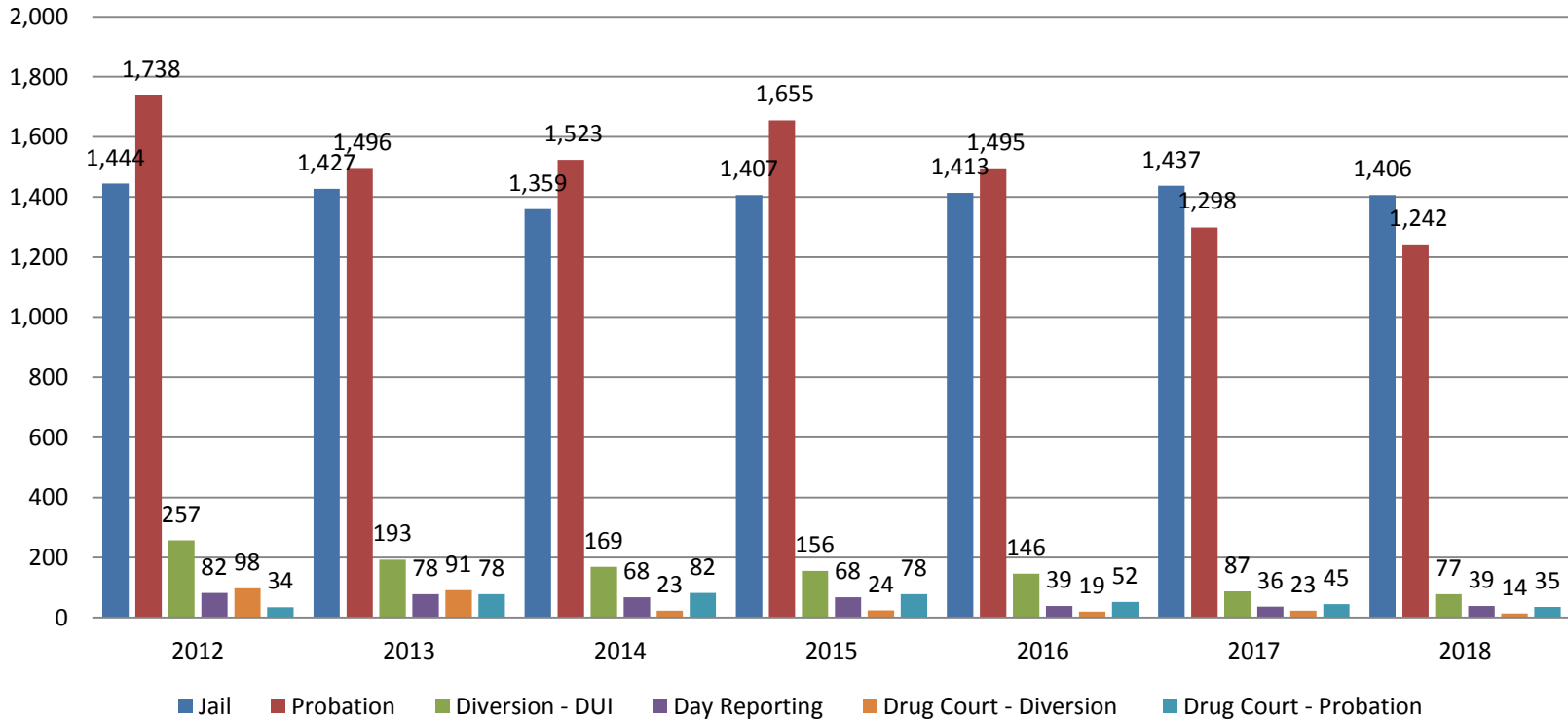


Jail includes individuals in booking, detention, work release and out-of county (combined)

(data obtained from detention facility, DA's Office, & District Court)

Correlation: Total & City of Wichita / Municipal Court Programs

Total Annual ADP: 2012 - present

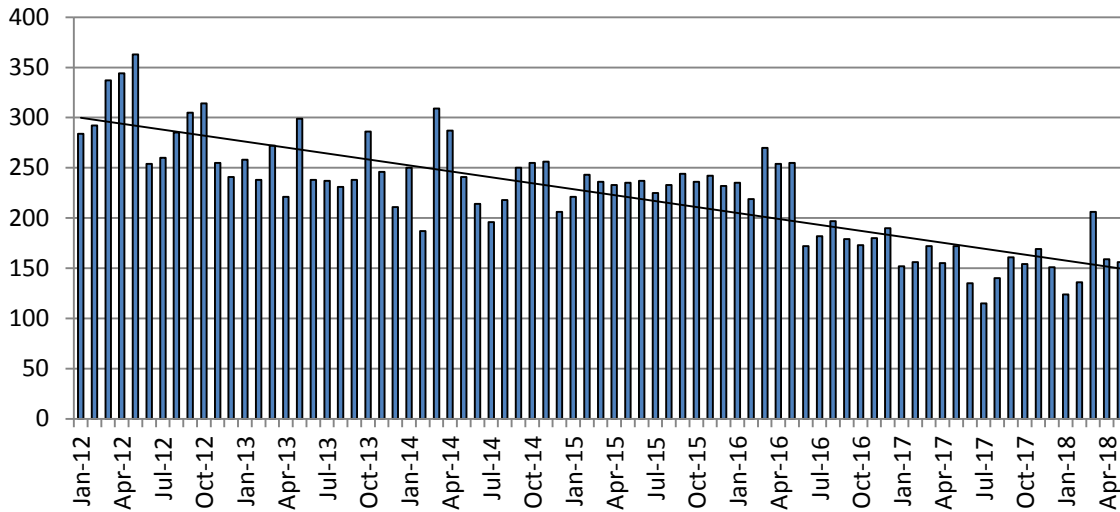


Jail includes individuals in booking, detention, work release and out-of county (combined)



Juvenile

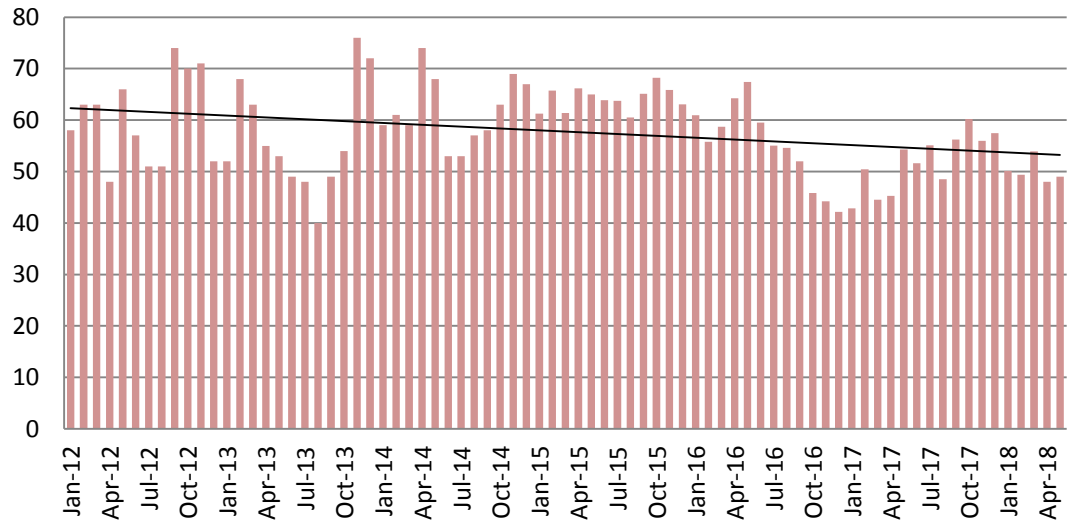
JIAC Intakes: 2012 - present



Year	May	May YTD Avg.
2013	299	258
2014	241	255
2015	235	234
2016	255	247
2017	172	161
2018	156	156

Year	May	May YTD Avg.
2013	53	58
2014	68	64
2015	65	64
2016	67	61
2017	454	47
2018	49	50

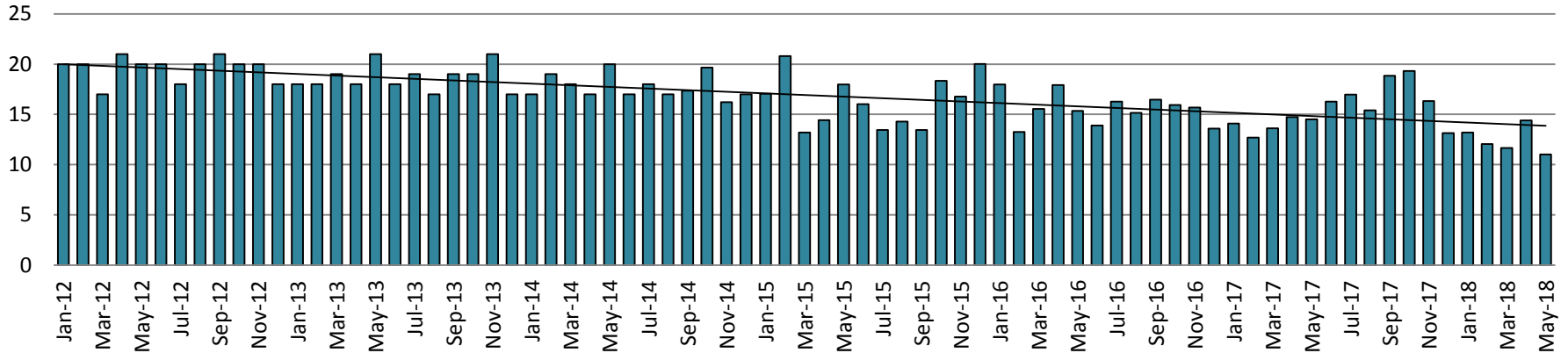
JDF ADP: 2012 - present



Juvenile Detention Alternatives

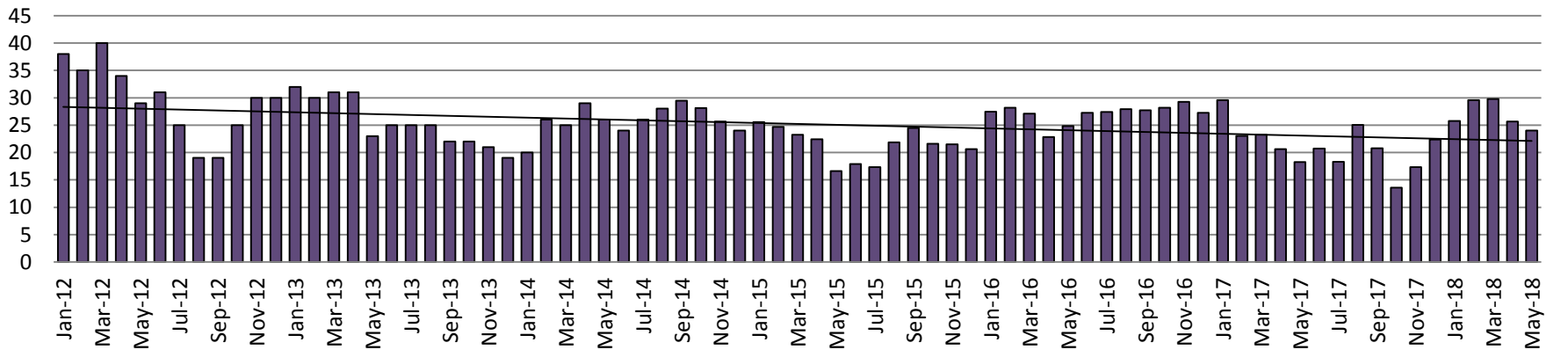
Juvenile Residential Facility (JRF)

ADP: 2012 - present



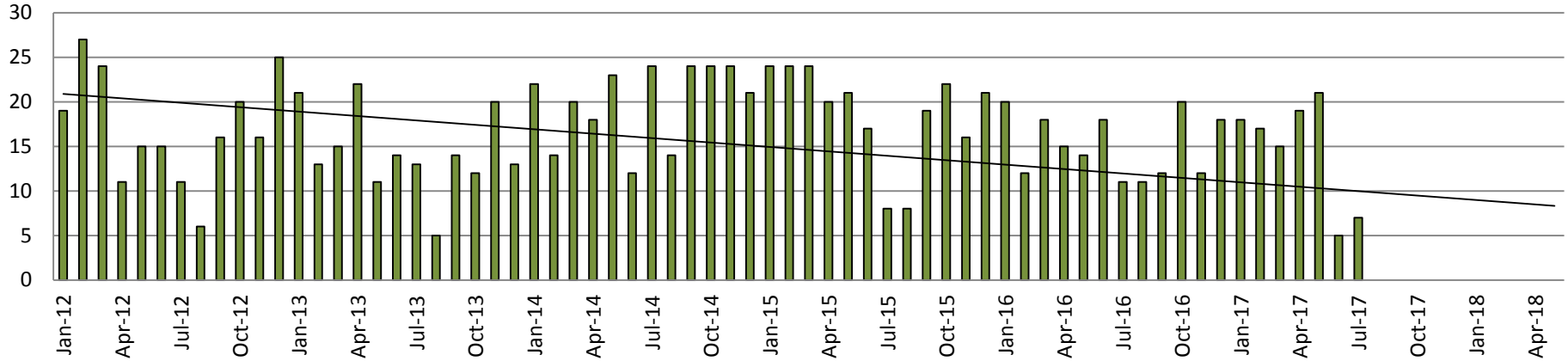
Home-Based Supervision

ADP: 2012 - present

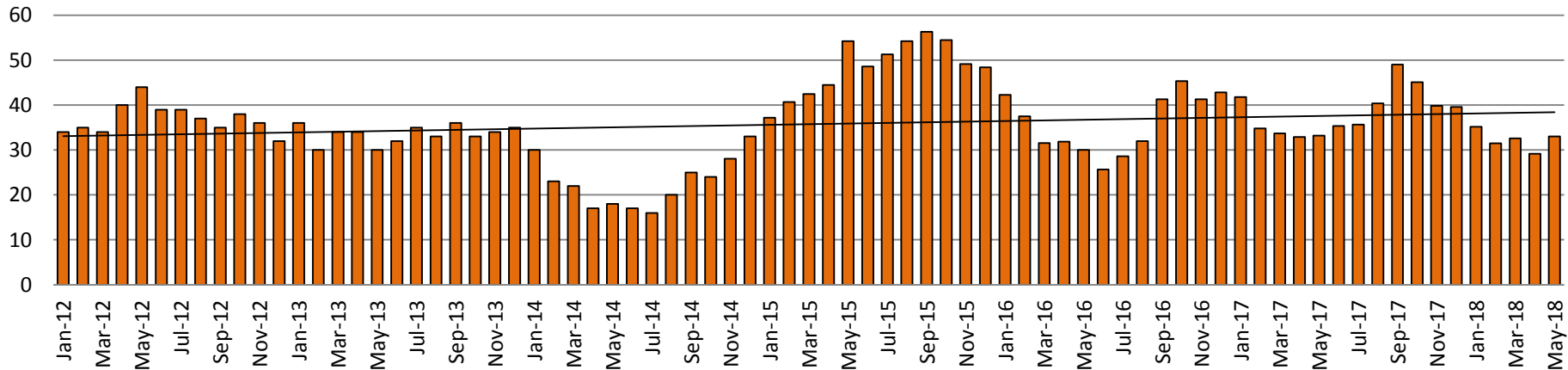


Juvenile Detention Alternatives

Weekend Alternative Detention Program 2012 - present



Detention Advocacy Case Management Services ADP: 2012 - present



Juvenile Detention Services

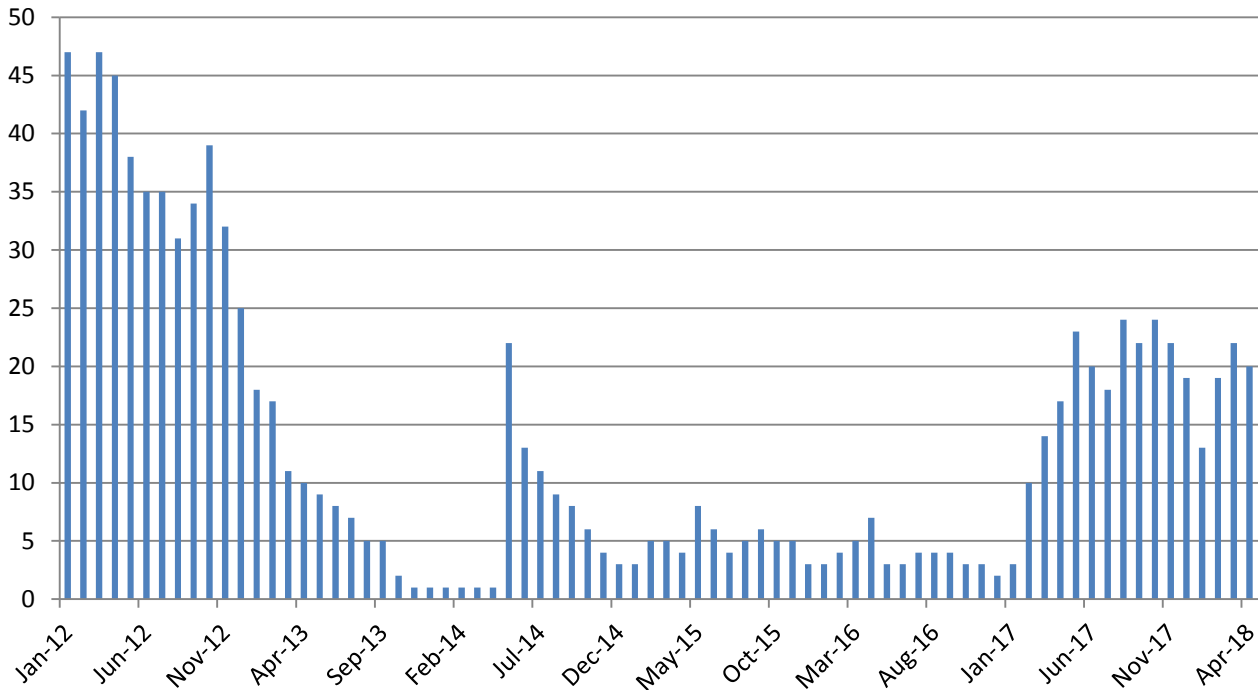
May ADP	2015	2016	2017	2018
Juvenile Detention Facility	65	67	54	49
Juvenile Residential Facility	18	15	15	11
Home Based Supervision	17	25	18	24
Detention Advocacy Case Management Services	54	30	33	33
Weekend Alternative Detention Program (total)	21	14	21	0

May YTD AVERAGE	2015	2016	2017	2018
Juvenile Detention Facility	64	61	47	50
Juvenile Residential Facility	17	16	14	12
Home Based Supervision	23	26	23	27
Detention Advocacy Case Management Services	44	35	35	32
Weekend Alternative Detention Program	23	16	18	0



Monthly Jail Snapshot: May 31, 2018

BICE Holds 2012-Present

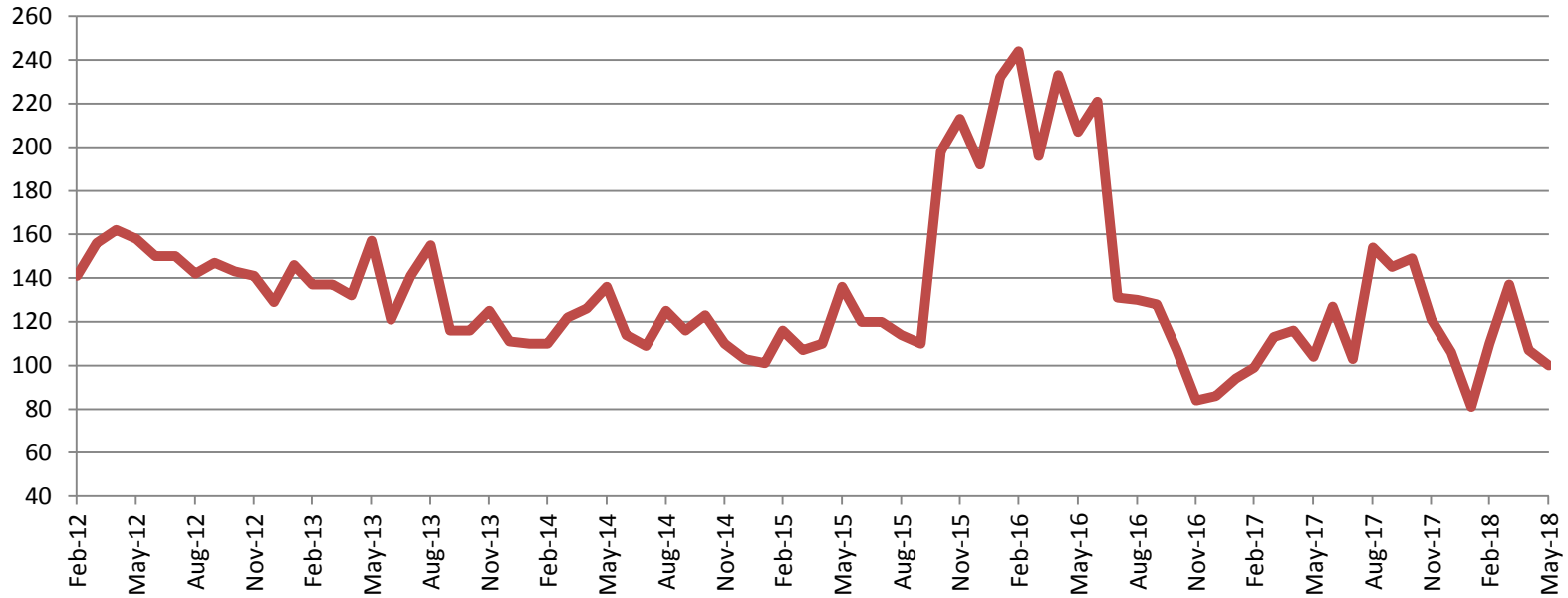


2013	2014	2015	2016	2017	2018
9	22	8	3	23	25



Monthly Jail Snapshot: May 31, 2018

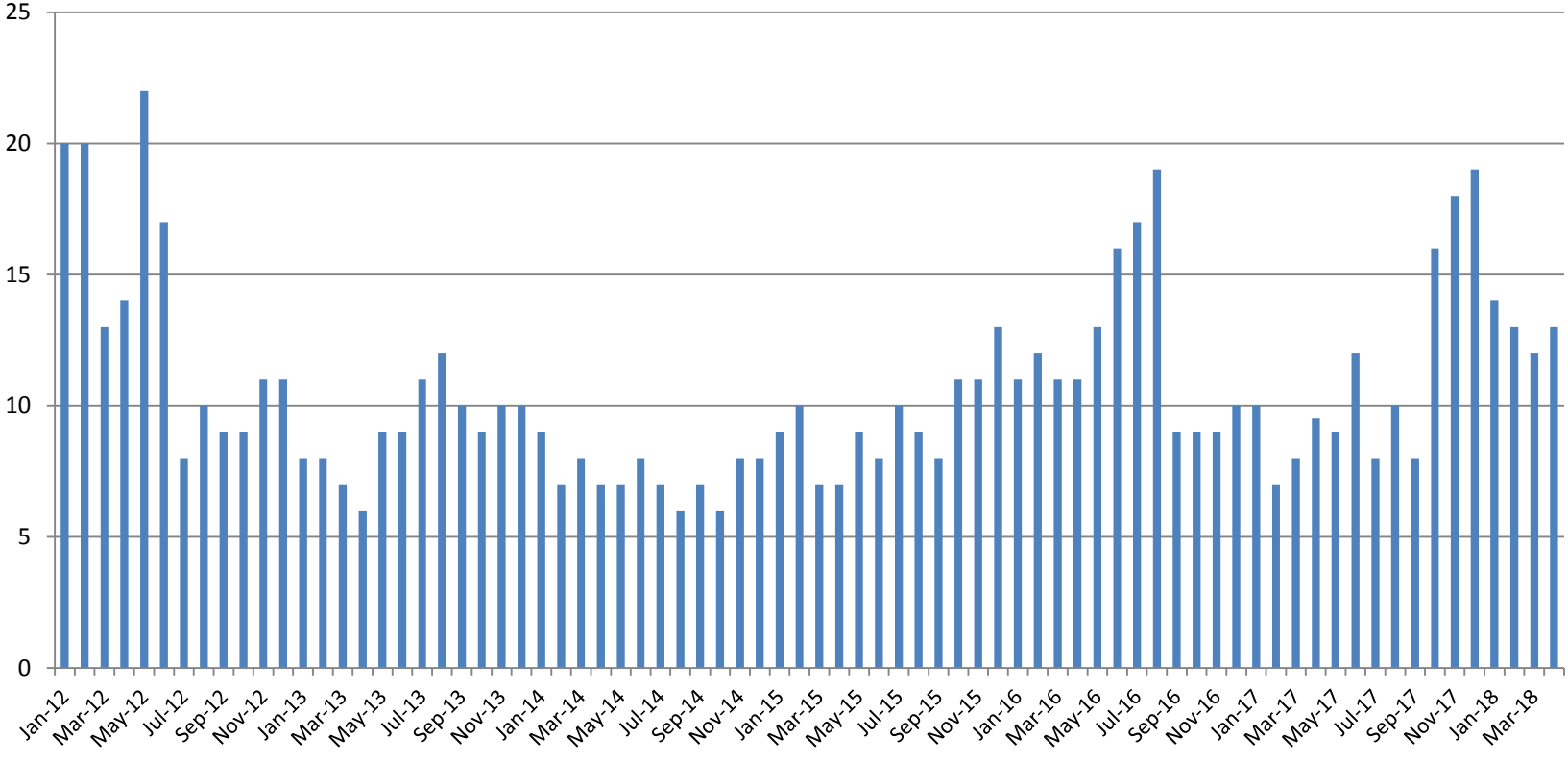
Felony Commitments: February 2012 - present



2013	2014	2015	2016	2017	2018
157	136	136	207	104	100



Journal Entry Completion (Average Days) January 2013-Present



	April	2013	2014	2015	2016	2017	2018
Avg. Days		7	7	7	11	9.5	13
YTD Avg.		8	8	8	11	9	13