

Criminal Justice Coordinating Council

Population Report & Program Trends

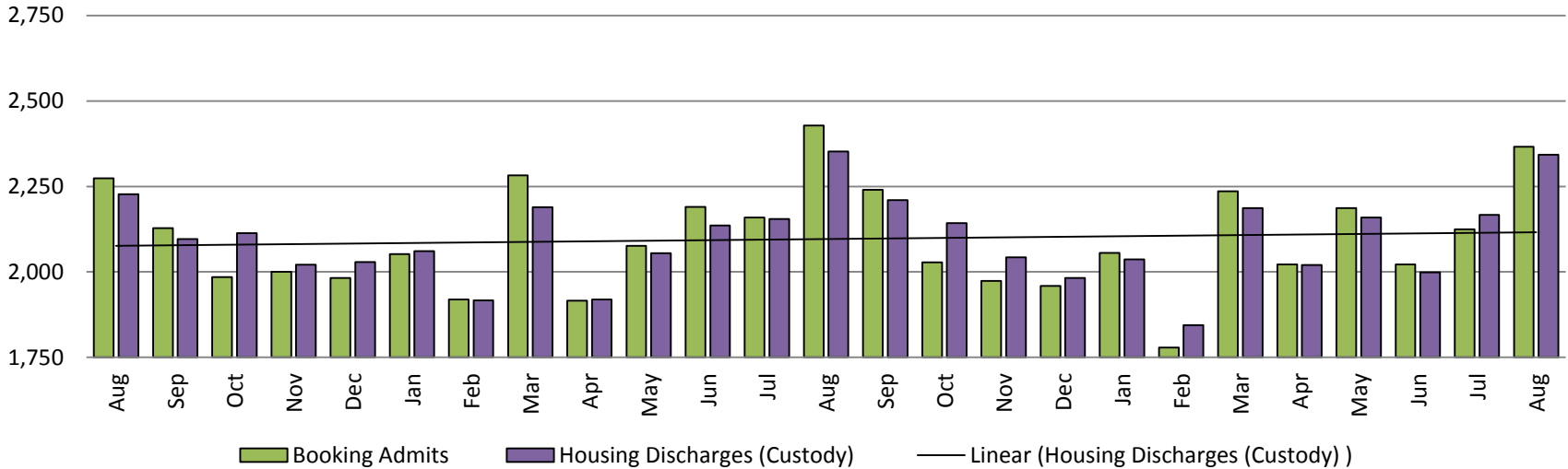
September 2018



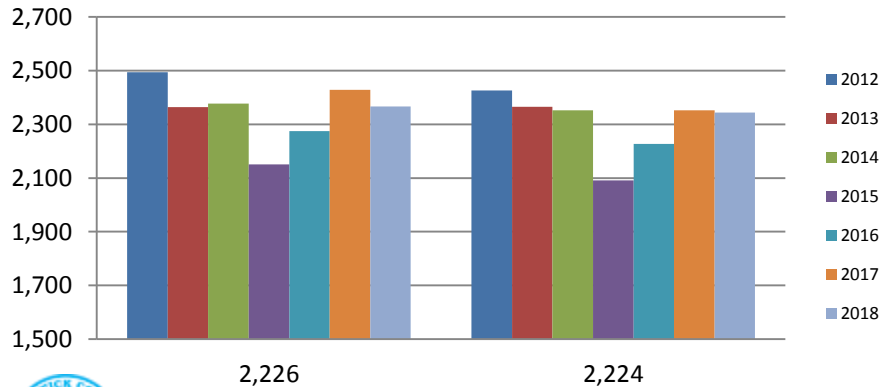
Sedgwick County...
working for you

Detention Facility

Booking Admits & Housing Discharges from Custody August 2016-Present



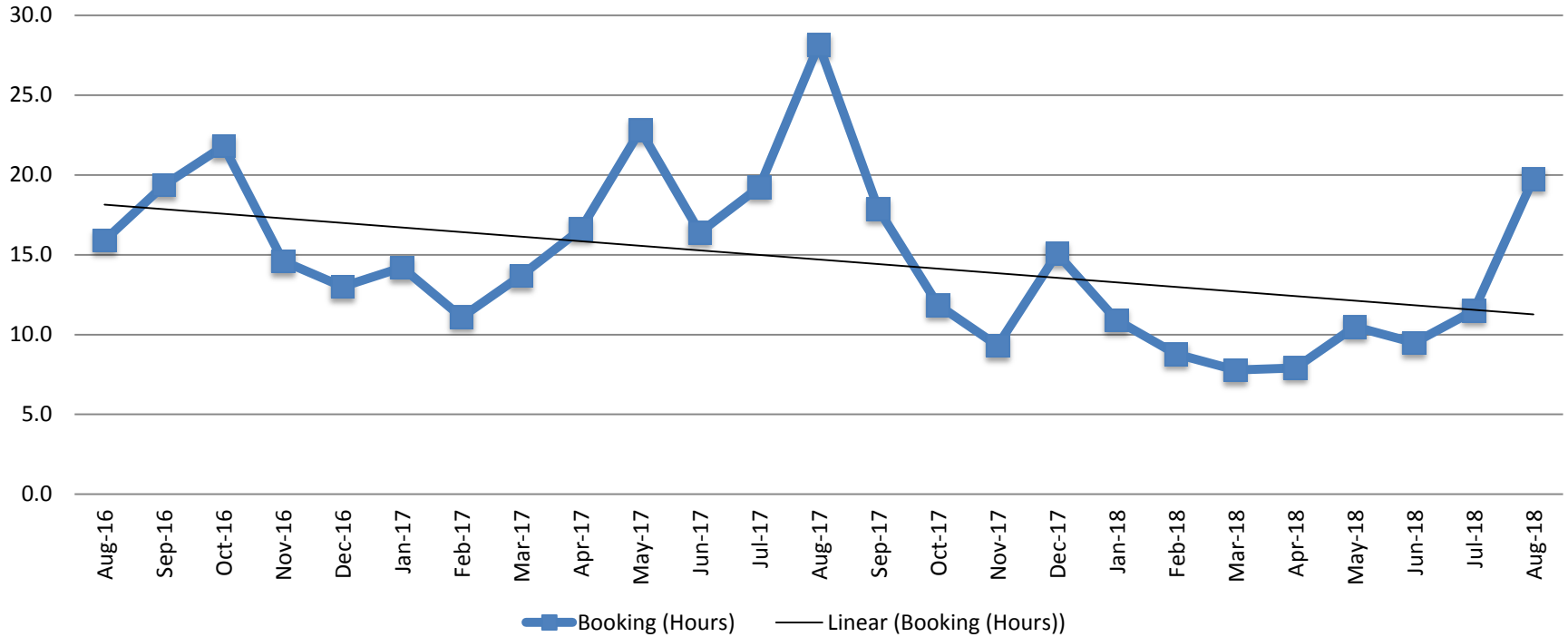
Bookings Year over Year: Month of August



Bookings August	Housing Discharges August
2016: 2,274	2016: 2,227
2017: 2,428	2017: 2,352
2018: 2,366	2018: 2,343

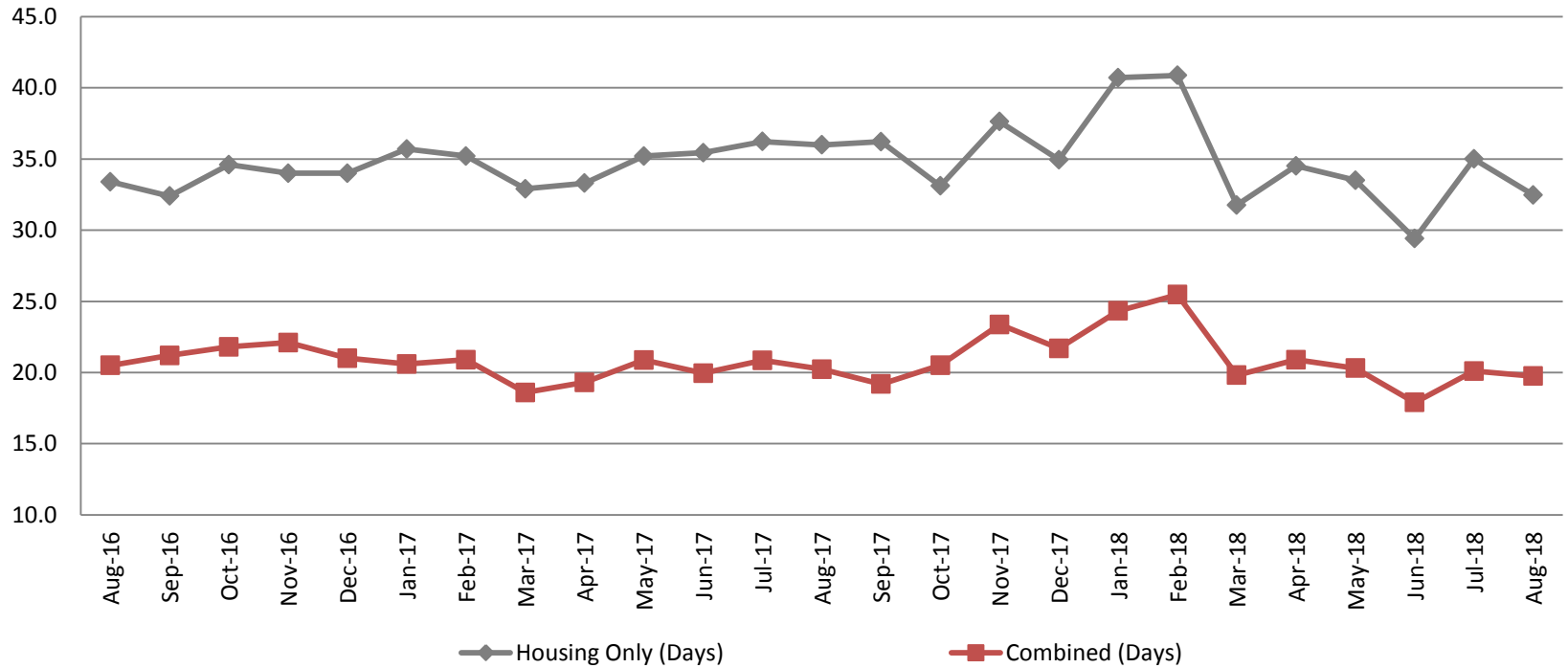
(data obtained from detention facility)

Average Length of Stay: Booking (Hours) August 2016 - Present



August	August YTD Average
2016: 15.9	2016: 18.7
2017: 28.1	2017: 17.8
2018: 19.8	2018: 10.8

Average Length of Stay: Housing & Combined (Days) August 2016 - Present

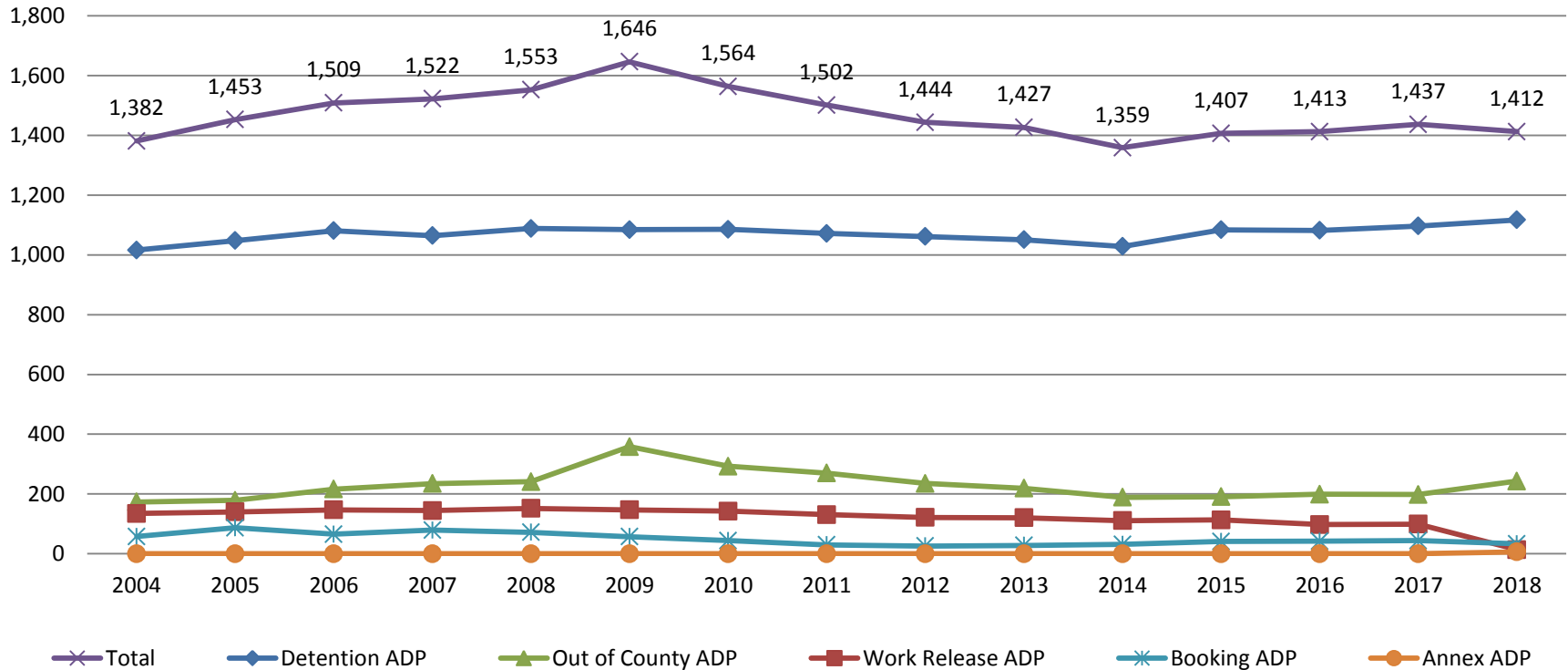


Month Year	Housing Only	Housing YTD AVG	Combined Days	Combined YTD AVG
August 2016	33.4	35.3	20.5	19.2
August 2017	36.0	35	20.2	20.2
August 2018	32.5	34.8	19.8	21.1

(data obtained from detention facility)

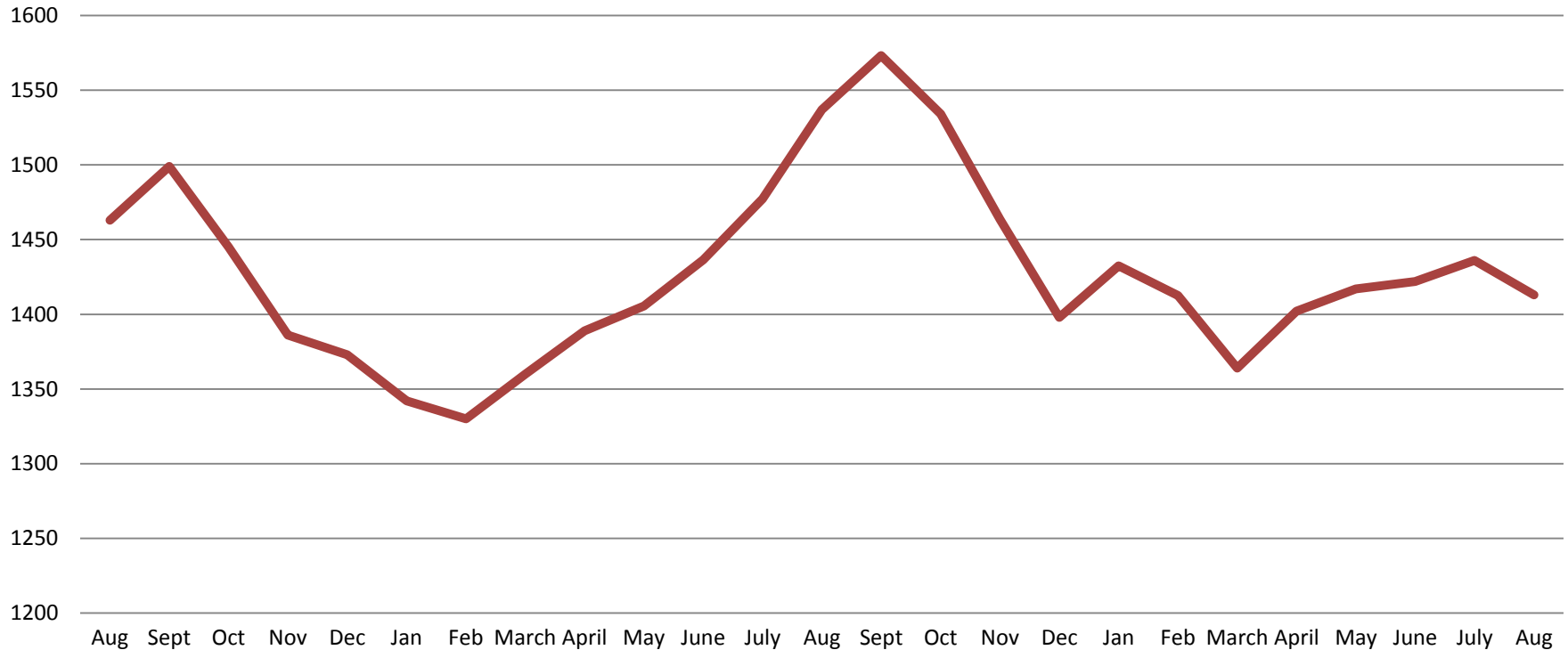
Jail: Annual Average Daily Population (ADP)

**TRENDS: Booking, Detention, Work Release, & Out of County Annual ADP:
2004 - present**



*Beginning January 2018, Work Release program began transfer to Division of Corrections

TOTAL MONTHLY ADP: JAIL (Booking, Detention Facility, Work Release, & Out of County) August 2016 - present



August 2016	August 2017	August 2018
1,463	1,537	1,413

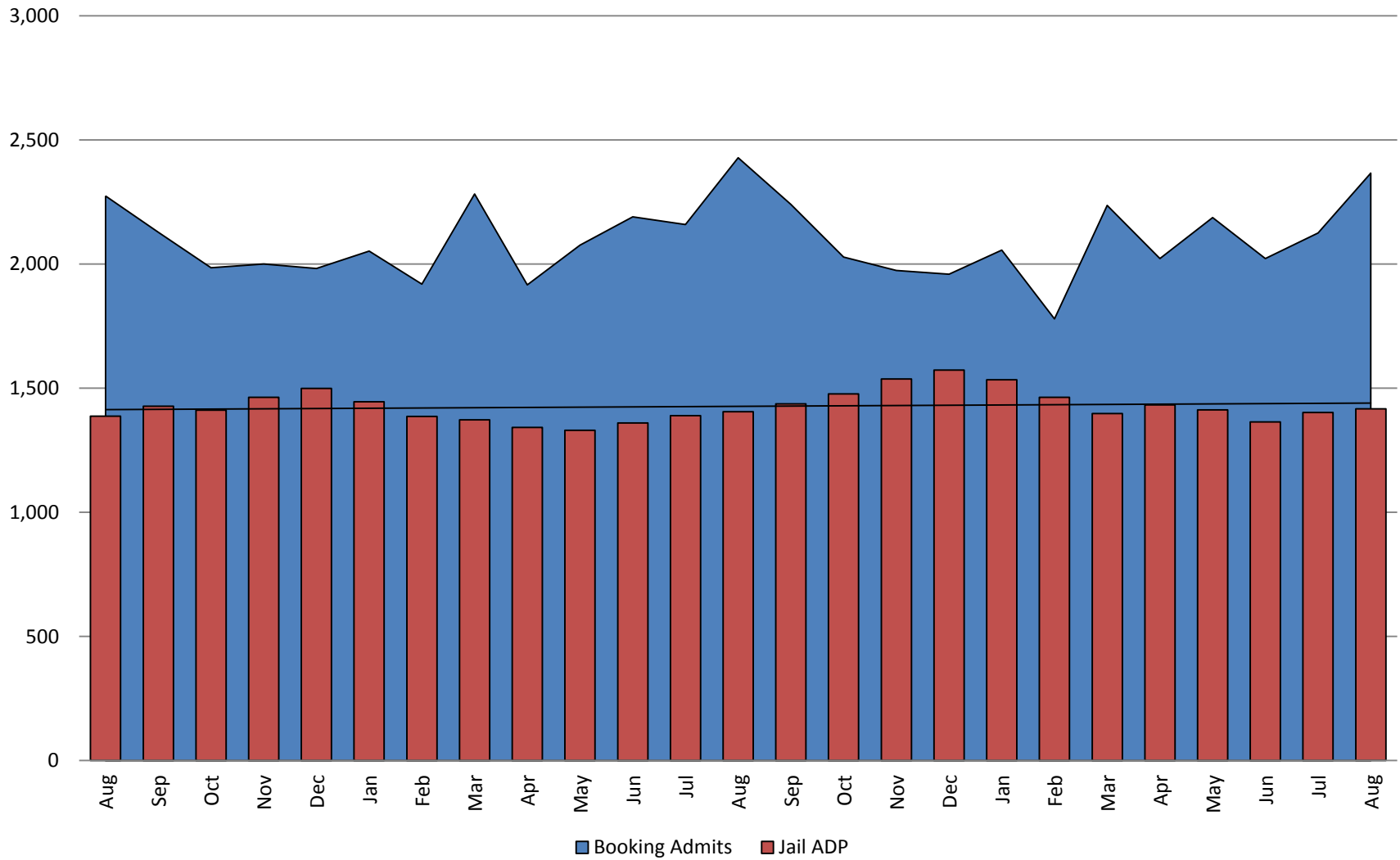
*Beginning January 2018, Work Release program began transfer to Division of Corrections

This slide shows total monthly ADP for individuals in booking, detention, work release, jail annex, and out-of county (combined)

(data obtained from detention facility)



Booking Admits & Total Monthly ADP (Jail): August 2016 - present



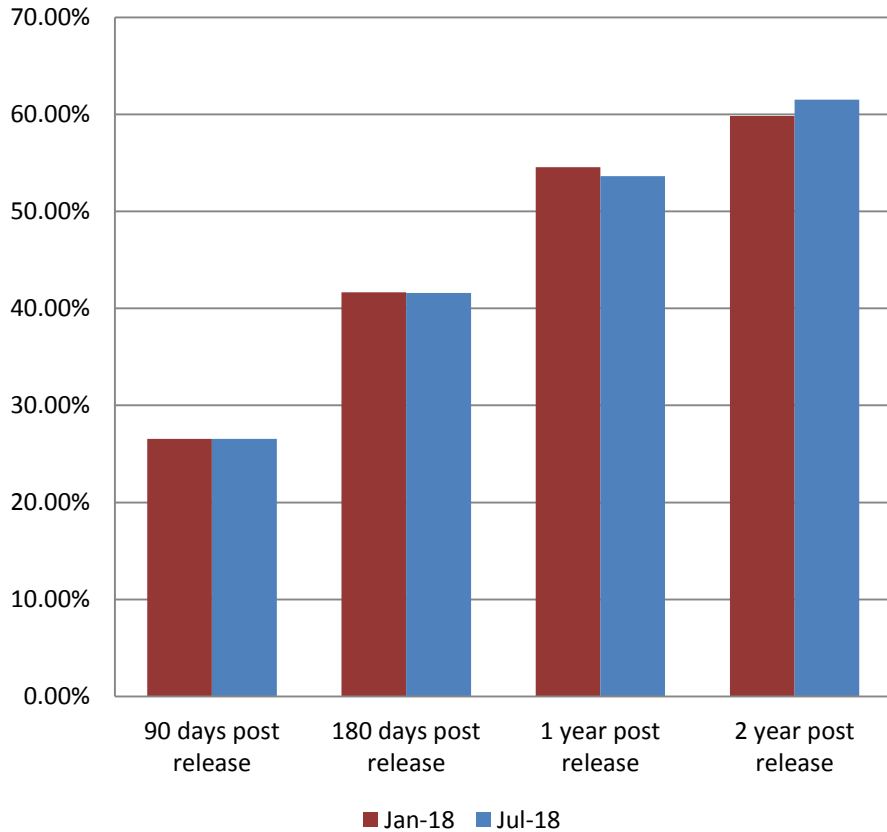
Jail includes individuals in booking, detention, work release and out-of county (combined)

(data obtained from detention facility)



Sedgwick County...
working for you

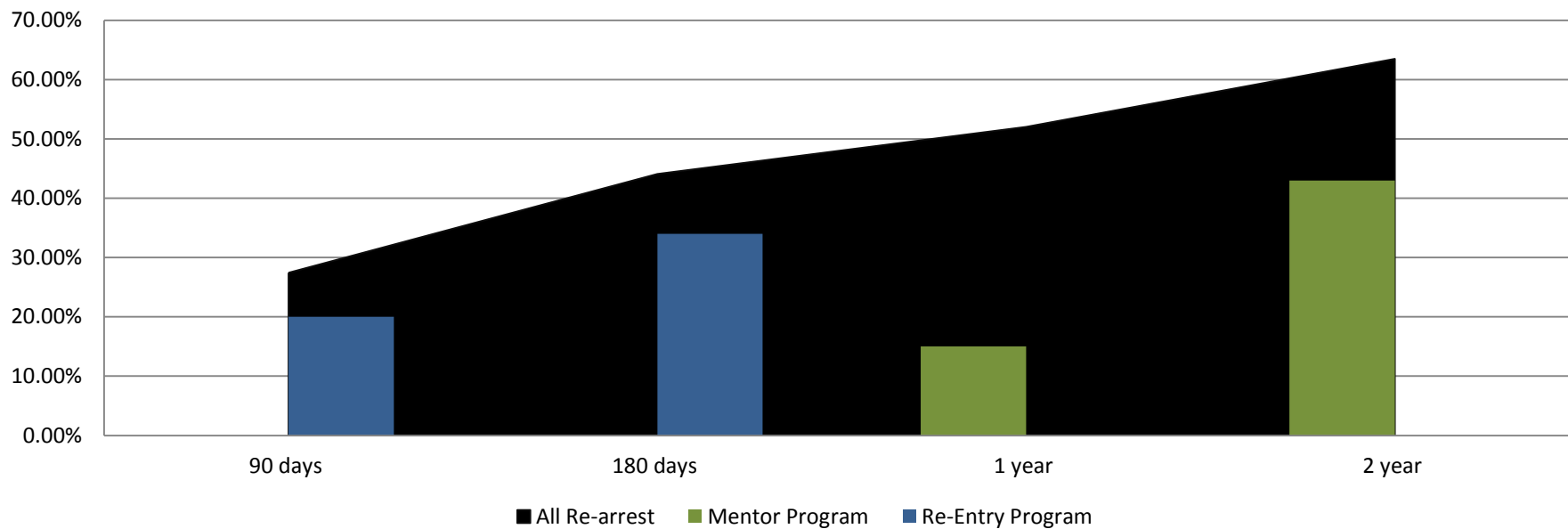
**Percent of released inmates rearrested
January & July comparison**



Month 2018	90 Days	180 Days	1 Year	2 Years
Jan	26.55%	41.67%	54.57%	59.84%
Feb	27.39%	40.22%	54.02%	61.03%
March	28.00%	41.08%	51.69%	60.03%
April	28.13%	39.41%	52.82%	62.93%
May	29.80%	41.88%	52.18%	62.81%
June	27.71%	41.92%	54.94%	62.07%
July	26.55%	41.60%	53.64%	61.50%
August	27.44%	44.09%	52.03%	63.51%

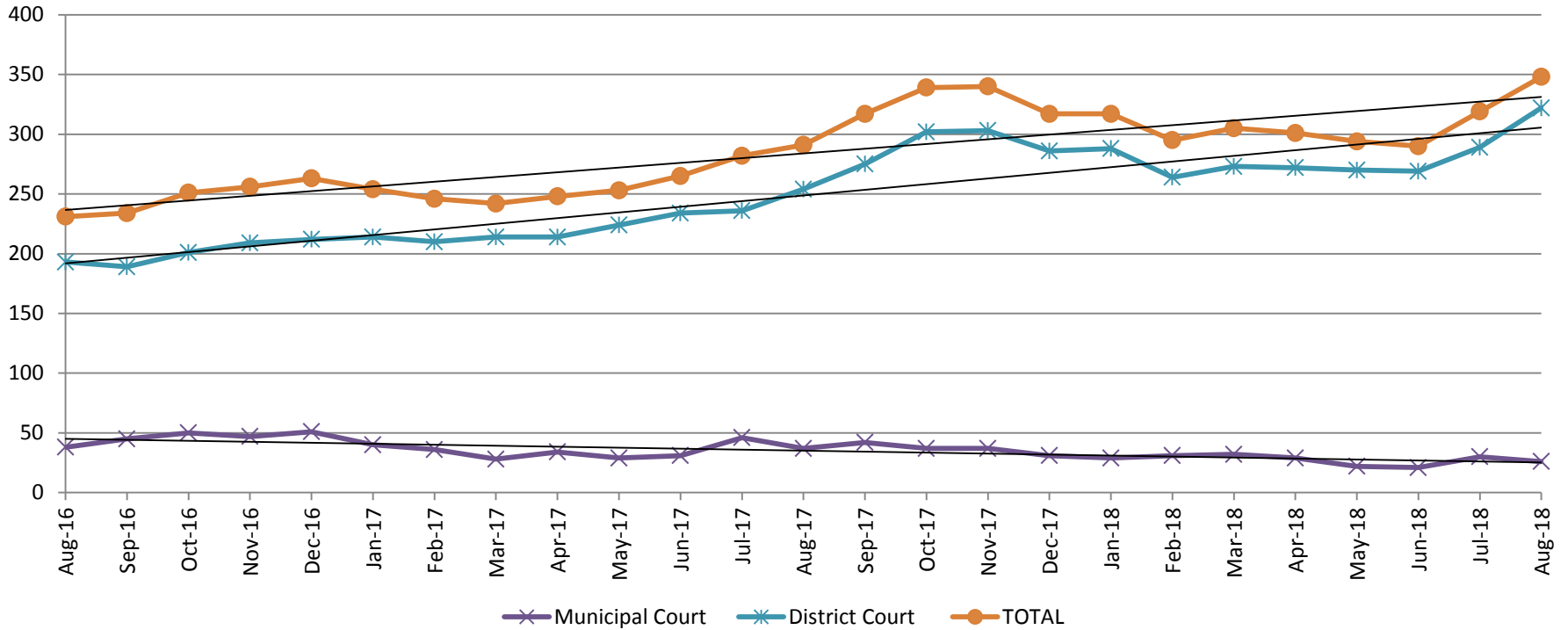
(data obtained from detention facility)

Recidivism by Programs August 2018



August 2018	90 Days	180 Days	1 year	2 years
All Re-arrests	27.44%	44.09%	52.03%	63.51%
Mentor Program	0%	0%	15%	43%
Re-Entry Program	20%	34%	N/A	N/A

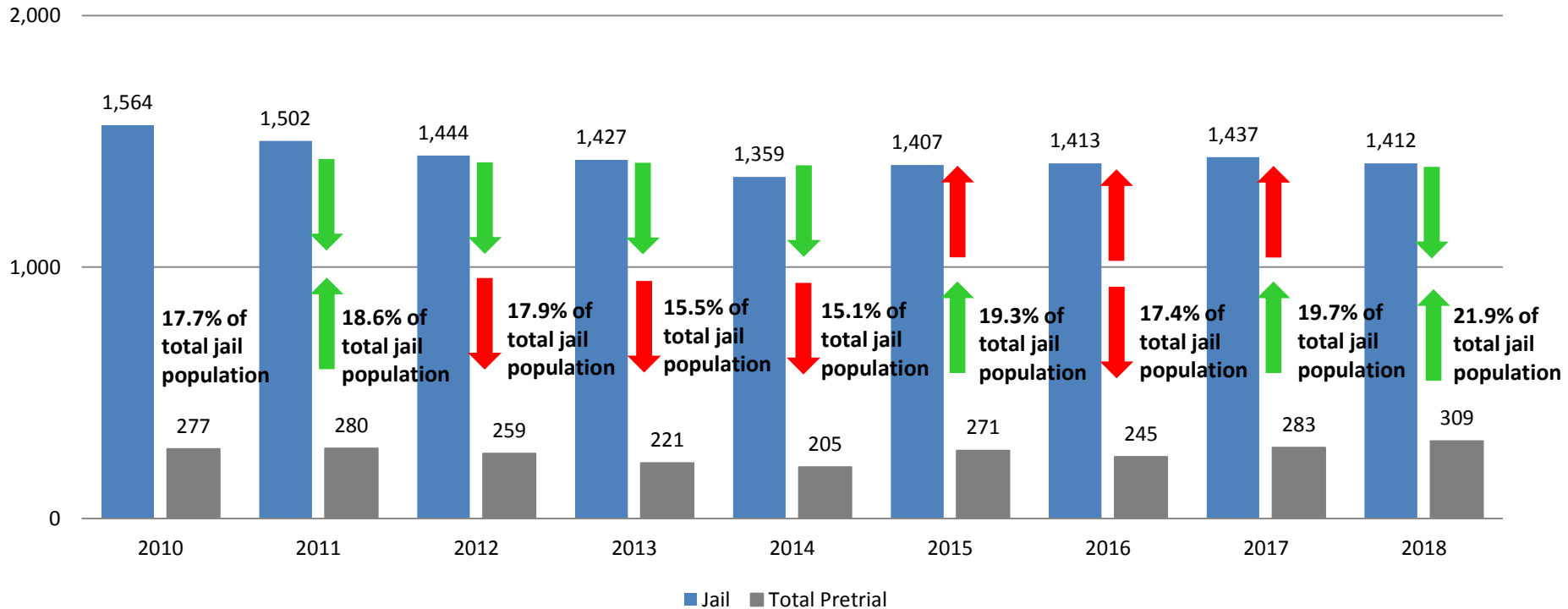
Pretrial Services Program (PSP) Monthly ADP: August 2016 - Present



August	2016 ADP	2017 ADP	2018 ADP	2016 YTD Avg.	2017 YTD Avg.	2018 YTD Avg.
Muni. Court	38	37	26	32	35	28
Dist. Court	193	254	322	209	225	381
Total	231	291	348	243	260	309

Correlation: Total & PSP

Total Annual ADP: 2010 - Present



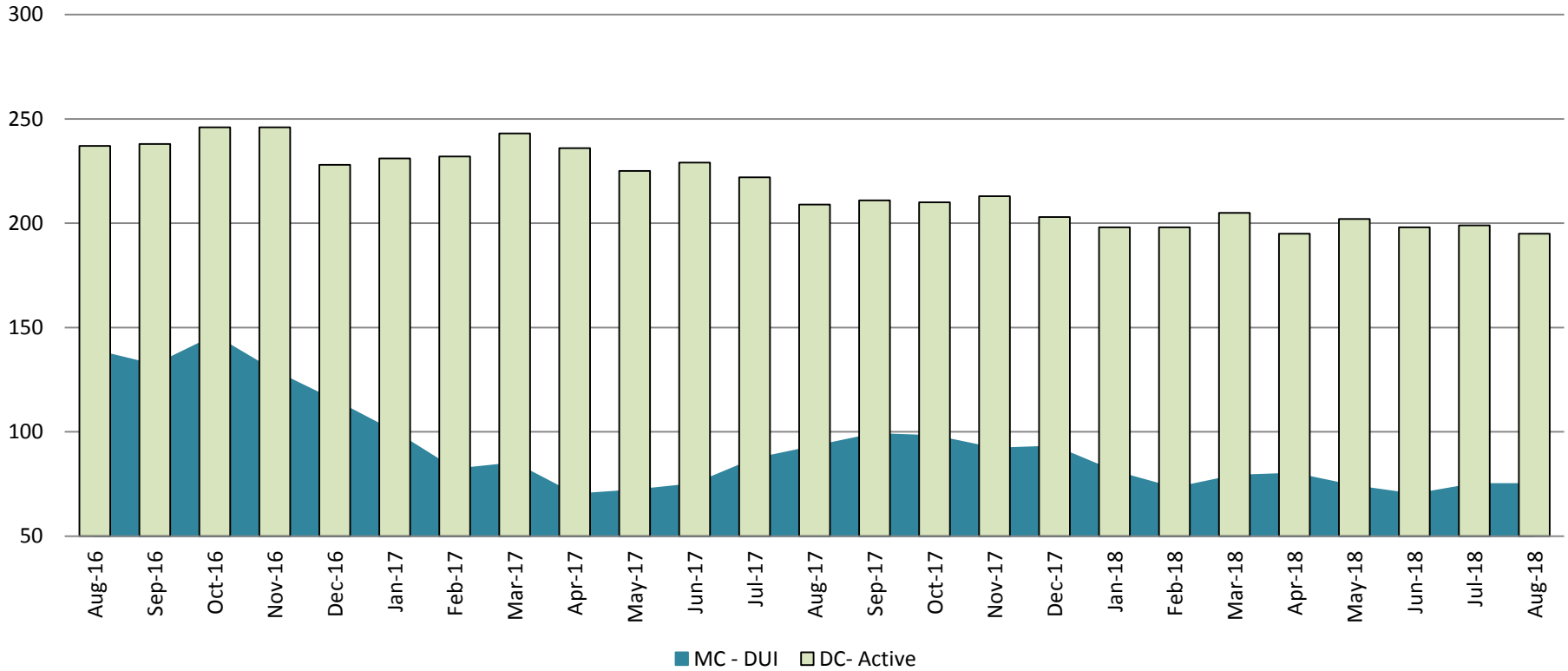
Arrows represent the overall increase/decrease of the population from year to year

Jail includes individuals in booking, detention, work release and out-of county (combined)



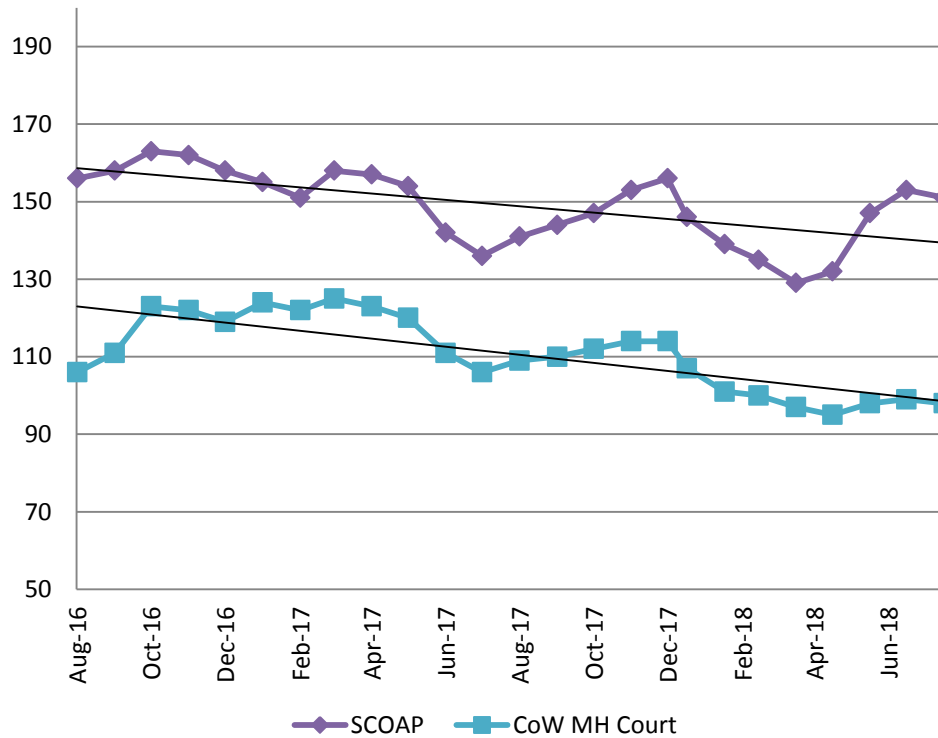
Diversion - Active Caseload

August 2016 - Present

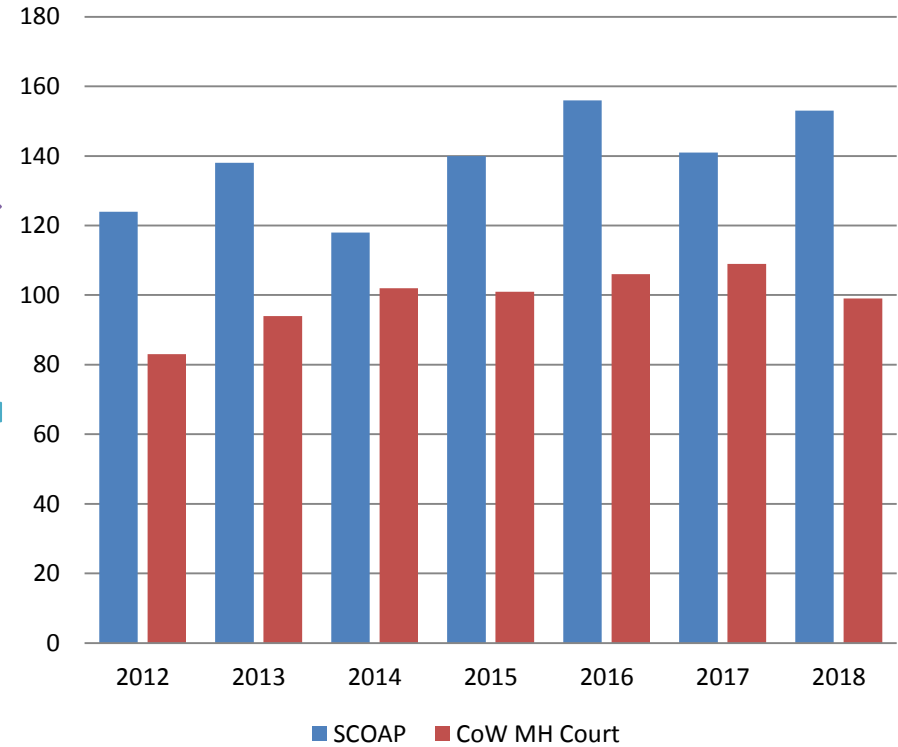


August	2016	2017	2018	2016 YTD Avg.	2017 YTD Avg.	2018 YTD Avg.
Muni. Court- DUI	139	93	75	154	83	76
Dist. Court- Active	237	209	195	235	228	199

Mental Health - ADP August 2016 - present

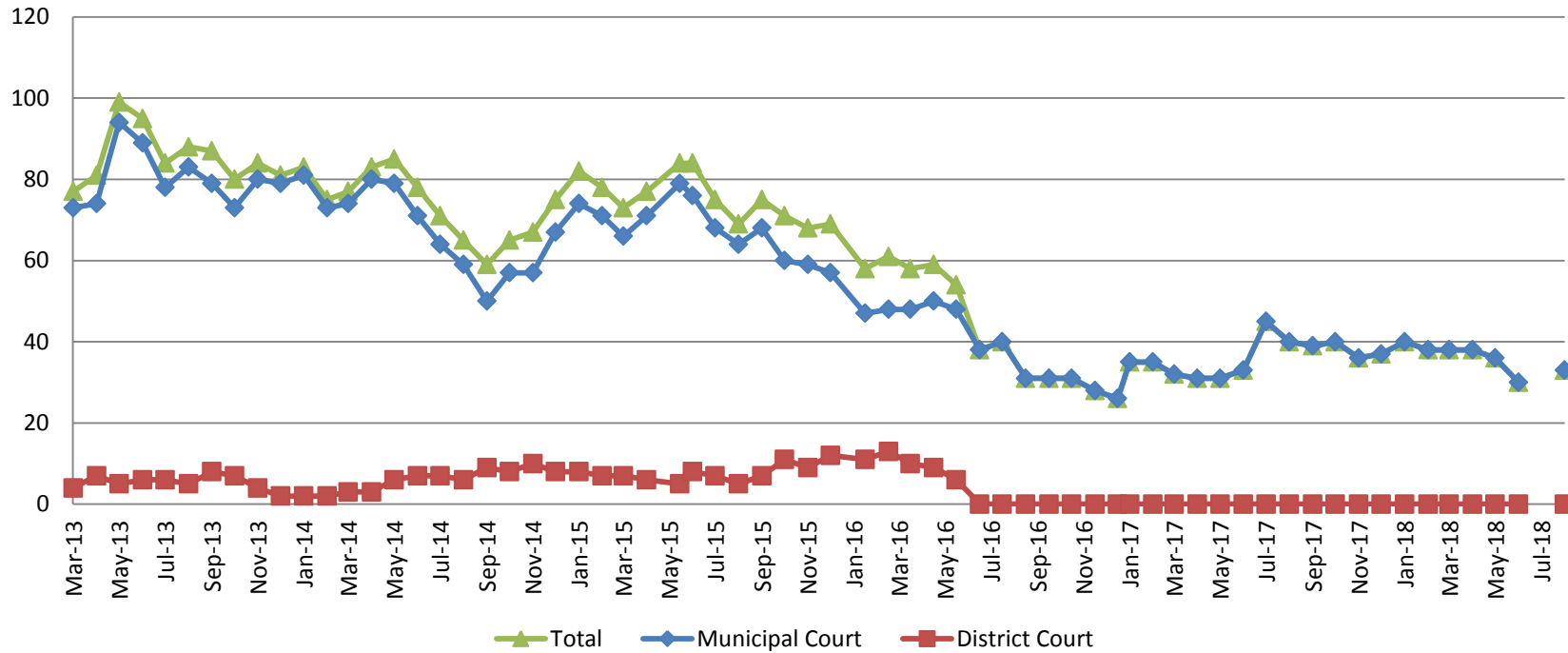


Mental Health ADP Year over Year- August



August	2016 ADP	2017 ADP	2018 ADP	2016 YTD Avg.	2017 YTD Avg.	2018 YTD Avg.
SCOAP	156	141	151	158	149	142
MH Court	106	109	98	103	118	99

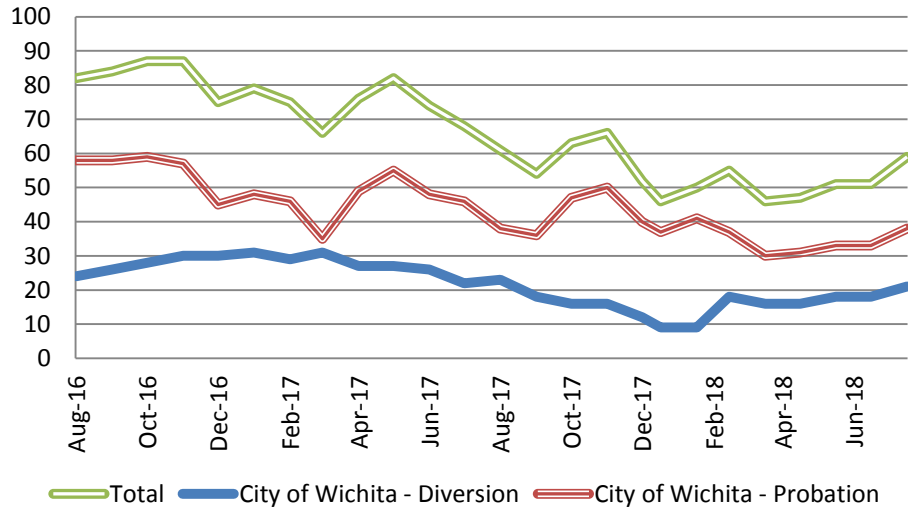
Day Reporting - Active Caseload 2013-present



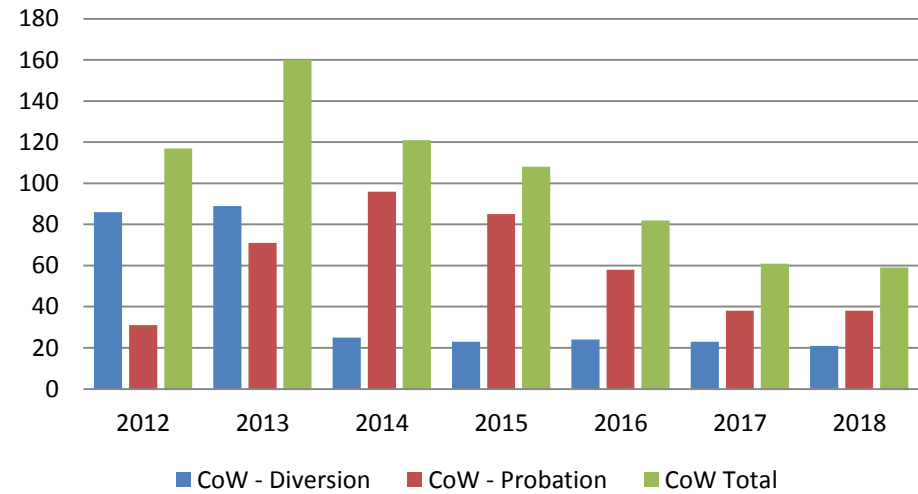
August	2013	2014	2015	2016	2017	2018
Muni. Court	83	59	64	31	40	33
Muni. Court YTD Avg.	78	73	71	44	35	36



Drug Court - City of Wichita ADP: August 2016- present



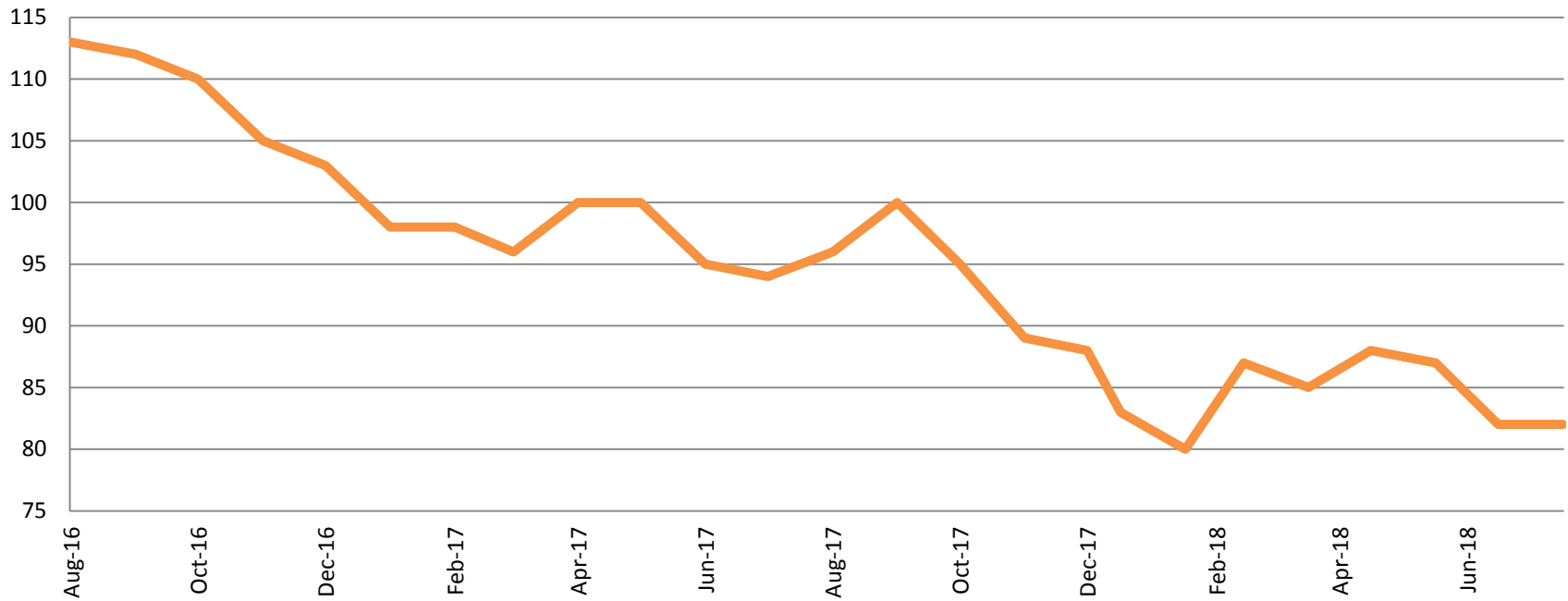
Drug Court- City of Wichita Year over Year- August



August	2016	2017	2018
Diversion	24	23	21
Probation	58	38	38
Total	82	67	59

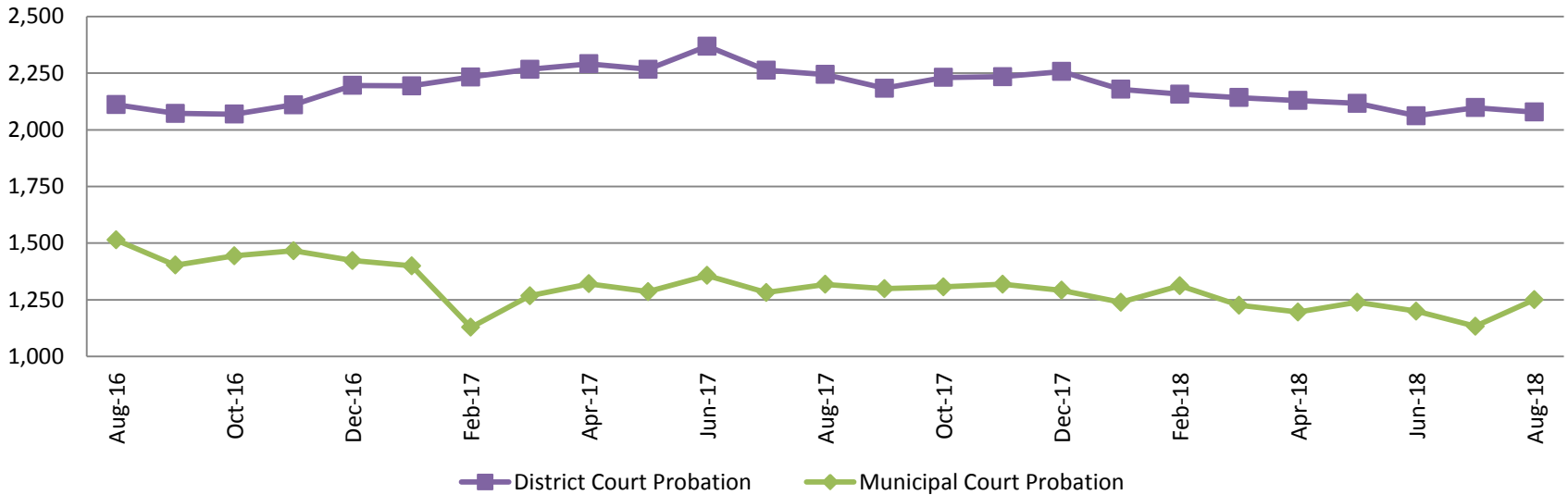


Drug Court - Sedgwick County ADP: August 2016 - present



August	2016	2017	2018
Sedg. Co. ADP	113	96	82
YTD Avg.	110	97	84

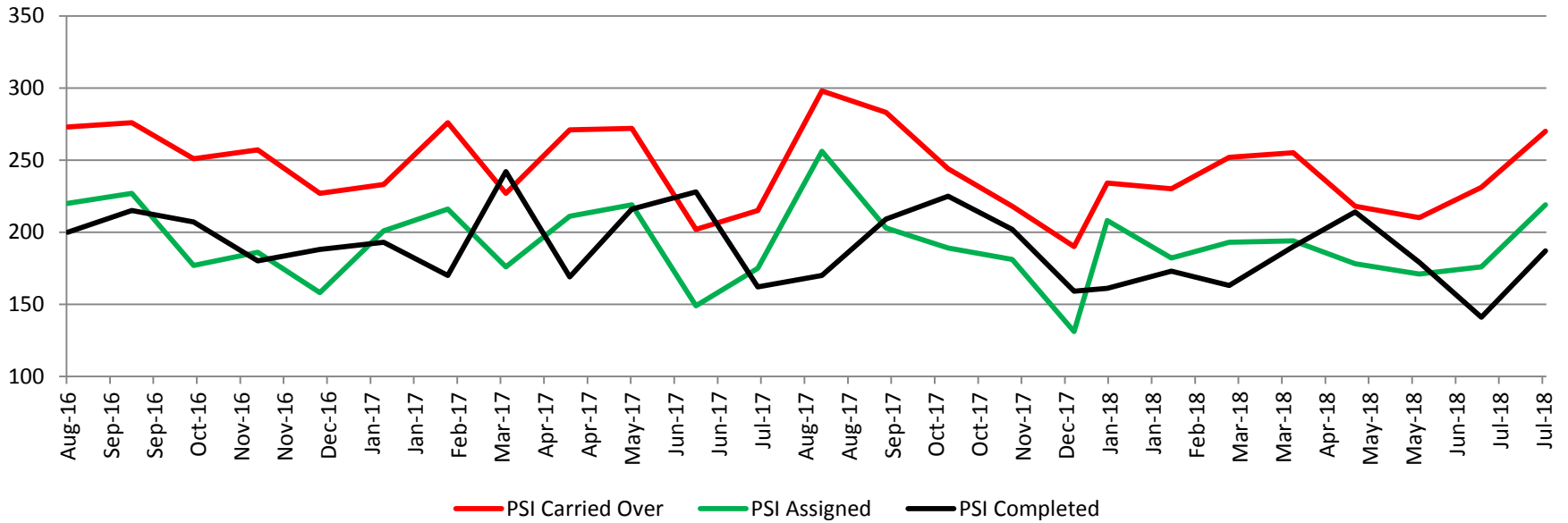
Probation - Active Caseloads August 2016 - present



August	2016	2017	2018	2016 YTD Avg.	2017 YTD Avg.	2018 YTD Avg.
Dist. Court Probation	2,111	2,244	2,078	2,189	2,266	2,120
Muni. Court Probation	1,514	1,318	1,251	1,526	1,295	1,225



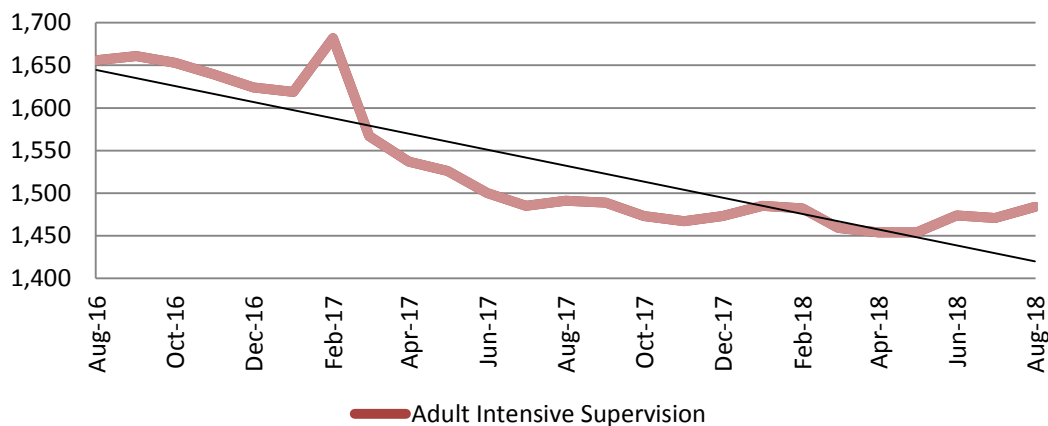
District Court Probation: Pre-Sentence Investigation August 2016 - present



August	2016	2017	2018
Carried Over	273	298	270
Assigned	220	256	219
Completed	200	170	187

Community Corrections

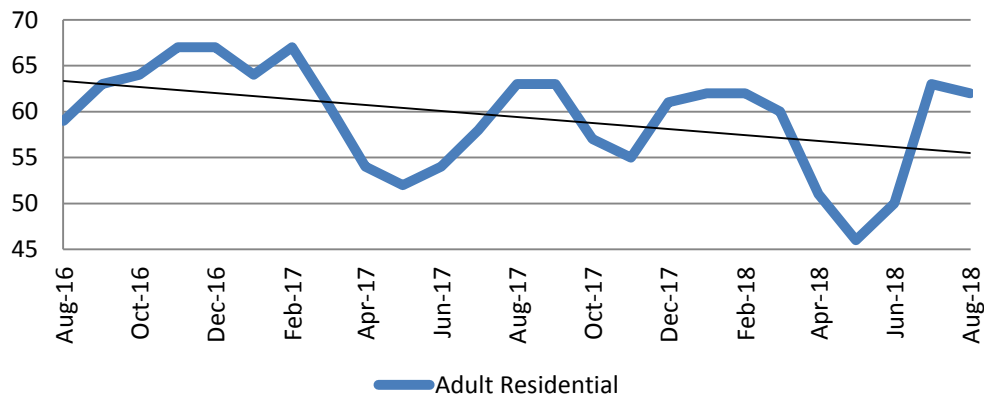
**Adult Intensive Supervision Probation (AISP):
ADP August 2016- present**



Year	August	August YTD Avg.
2016	1,656	1,621
2017	1,491	1,551
2018	1,484	1,470

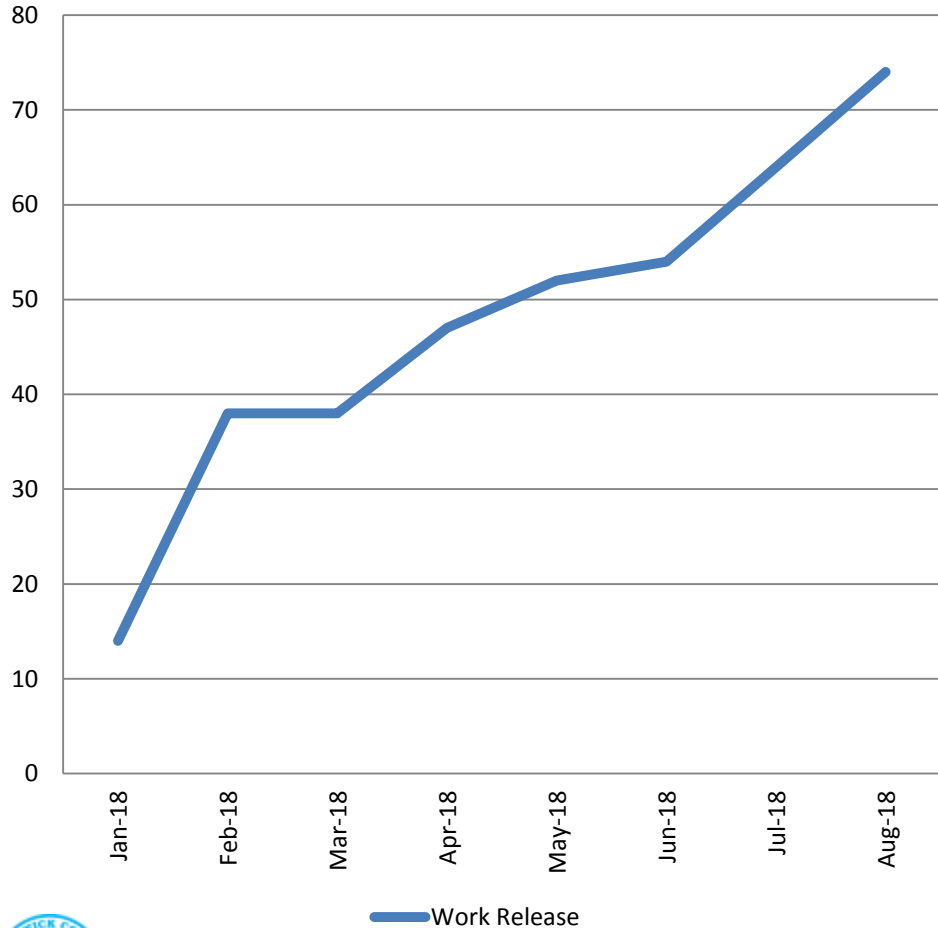
Year	August	August YTD Avg.
2016	59	63
2017	63	59
2018	62	57

**Adult Residential: ADP
August 2016- present**



Community Corrections

**Work Release: ADP
Jan 2018- present**



Month	Total	YTD Avg.
January	14	14
February	38	26
March	38	30
April	47	34
May	52	38
June	54	41
July	64	44
August	74	48

Correlation: Total & Sedgwick County Programs (Adult)

Total Annual ADP 2012-Present



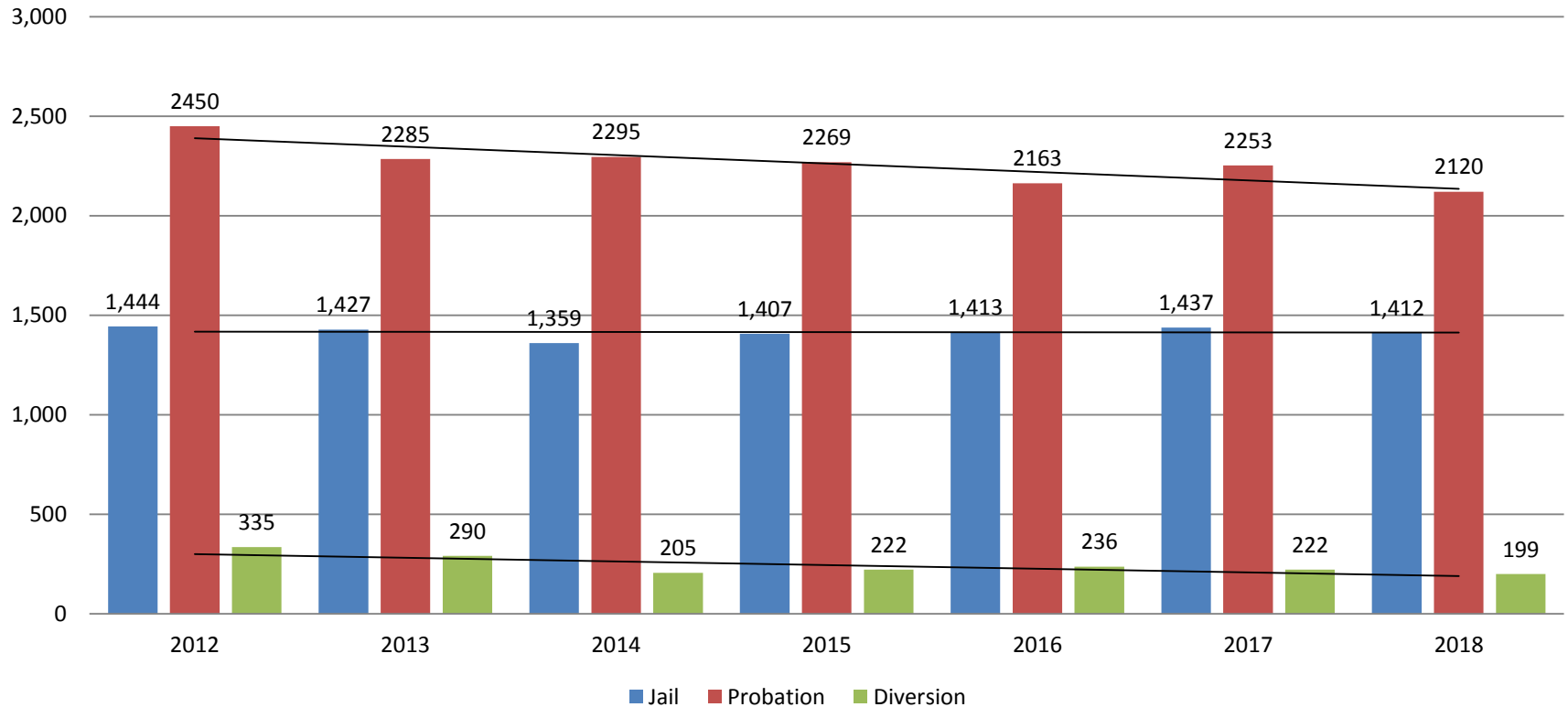
	2016	2017	2018
Jail	1,413	1,437	1,412
AISP	1,629	1,526	1,470
Drug Court	109	96	84
Adult Residential	63	59	57
Work Release	0	0	48
Day Reporting (DC)	4	0	0



Jail includes individuals in booking, detention, work release and out-of county (combined)
 Sedgwick County... working for you (data obtained from detention facility, SG Dept. of Corrections, Pretrial Services, & CoW)

Correlation: Total & District Court Programs

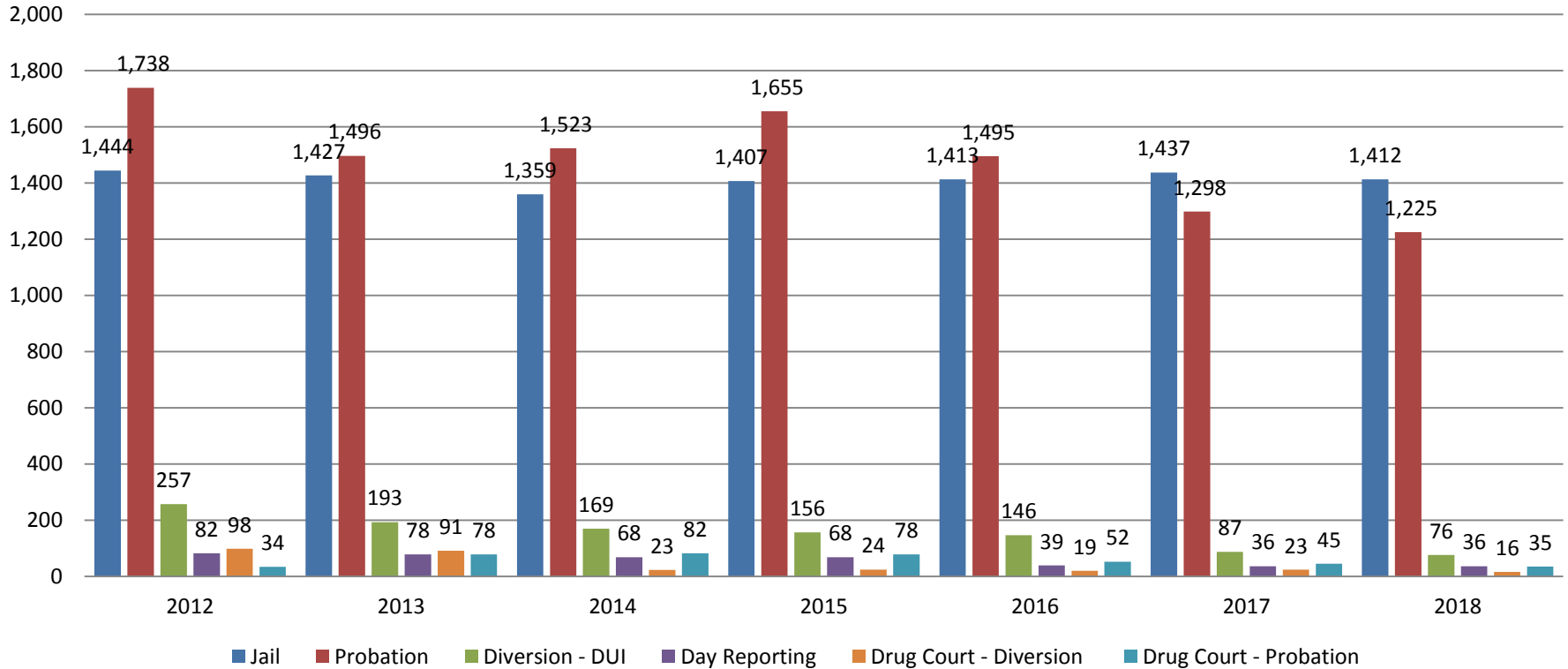
Total Annual ADP: 2012 - Present



Jail includes individuals in booking, detention, work release and out-of county (combined)

Correlation: Total & City of Wichita / Municipal Court Programs

Total Annual ADP: 2012 - present

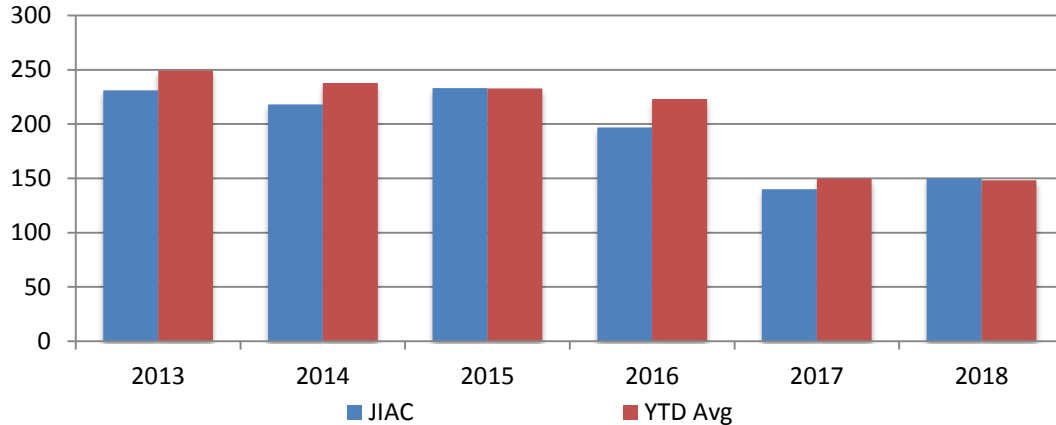


Jail includes individuals in booking, detention, work release and out-of county (combined)



Juvenile

JIAC Intakes
August 2013 - present

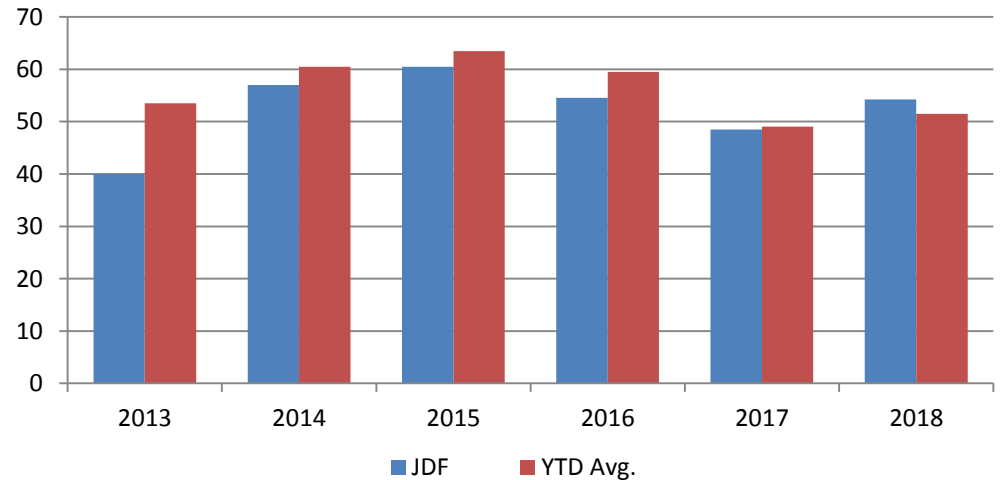


Year	August	August YTD Avg.
2013	231	249
2014	218	238
2015	233	233
2016	197	223
2017	140	150
2018	150	148

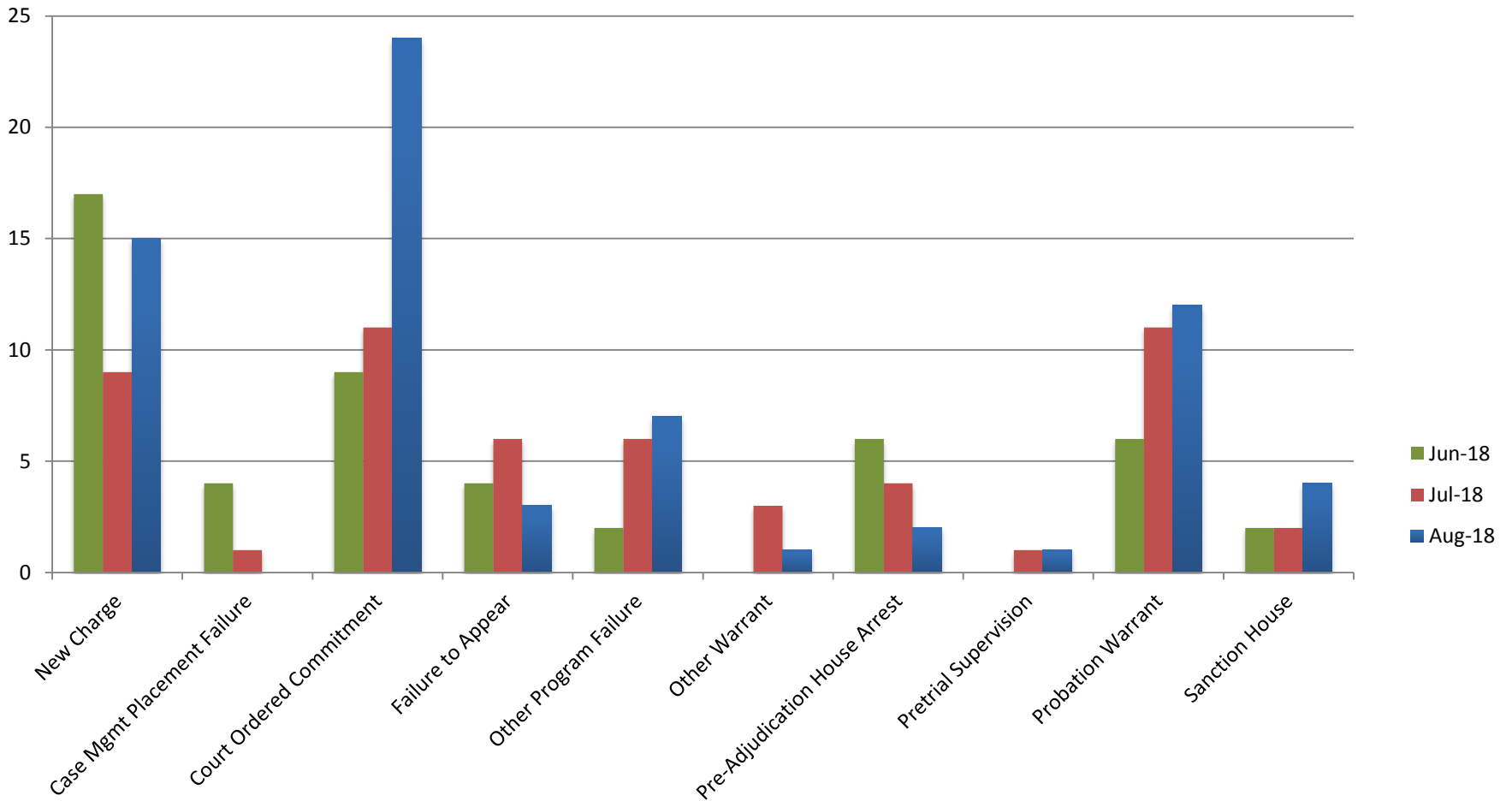
JDF ADP
August 2013 - present

Year	August	August YTD Avg.
2013	40	54
2014	57	61
2015	60	63
2016	55	60
2017	49	49
2018	54	52

JDF ADP
August 2013 - present



Reason for JDF Admits



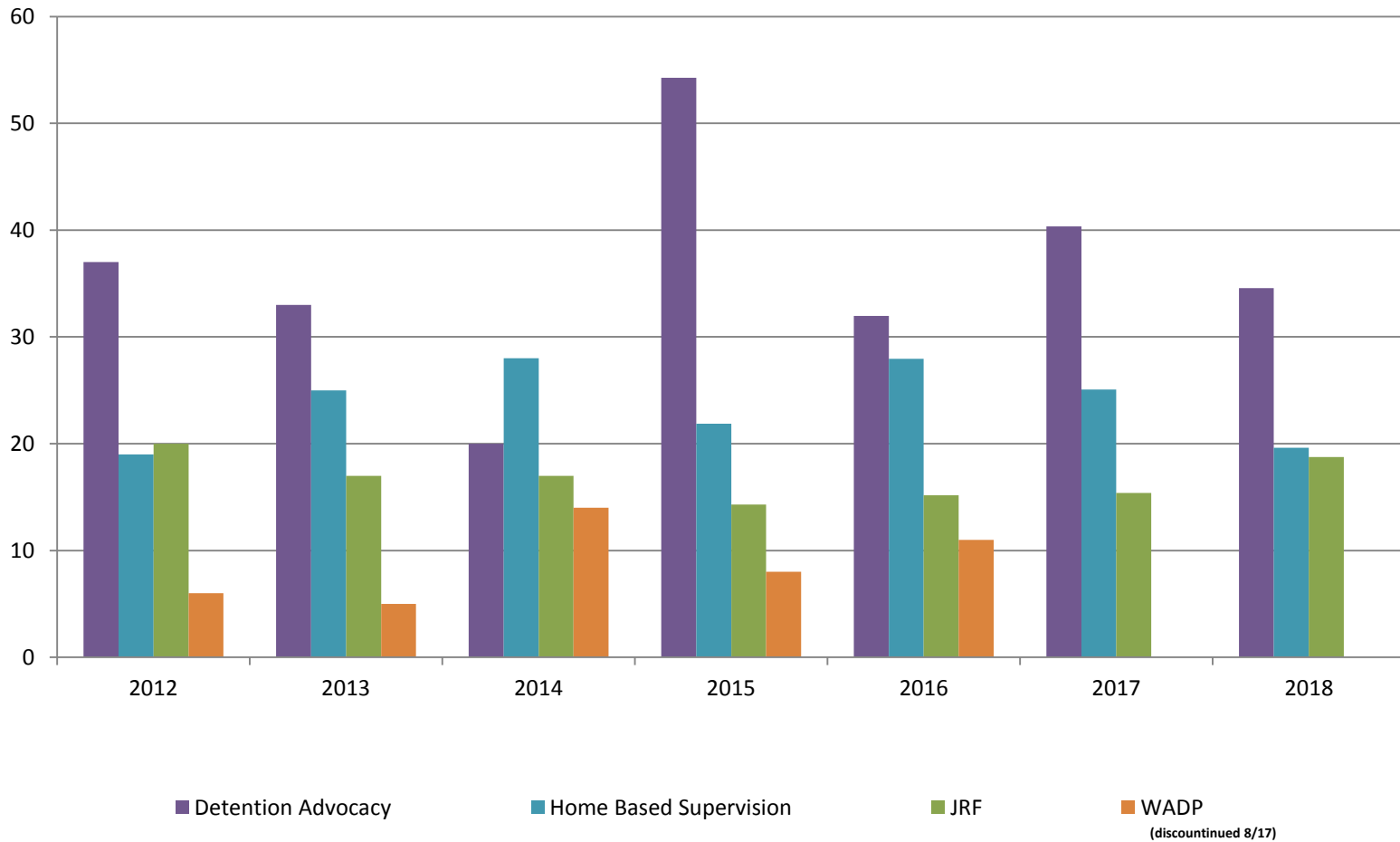
Reason for JDF Admits

Reason	Jan 2018	Feb 2018	March 2018	April 2018	May 2018	June 2018	July 2018	Aug 2018
New Charges	11	11	20	11	12	17	9	15
Case Management Placement Failures	0	0	0	0	1	4	1	0
Court Ordered Commitment	4	5	10	8	16	9	11	24
Failure to Appear	5	4	4	9	3	4	6	3
Other Program Failure	0	2	6	2	2	2	6	7
Other Warrant	4	6	4	1	1	0	3	1
Pre-Adjudication House Arrest	2	7	6	3	1	6	4	2
Pretrial Supervision	1	2	3	0	1	0	1	1
Probation Warrant	6	4	10	9	10	6	22	12
Sanction House	7	0	4	3	2	2	2	4



Juvenile Detention Alternatives

ADP: August 2012 - Present



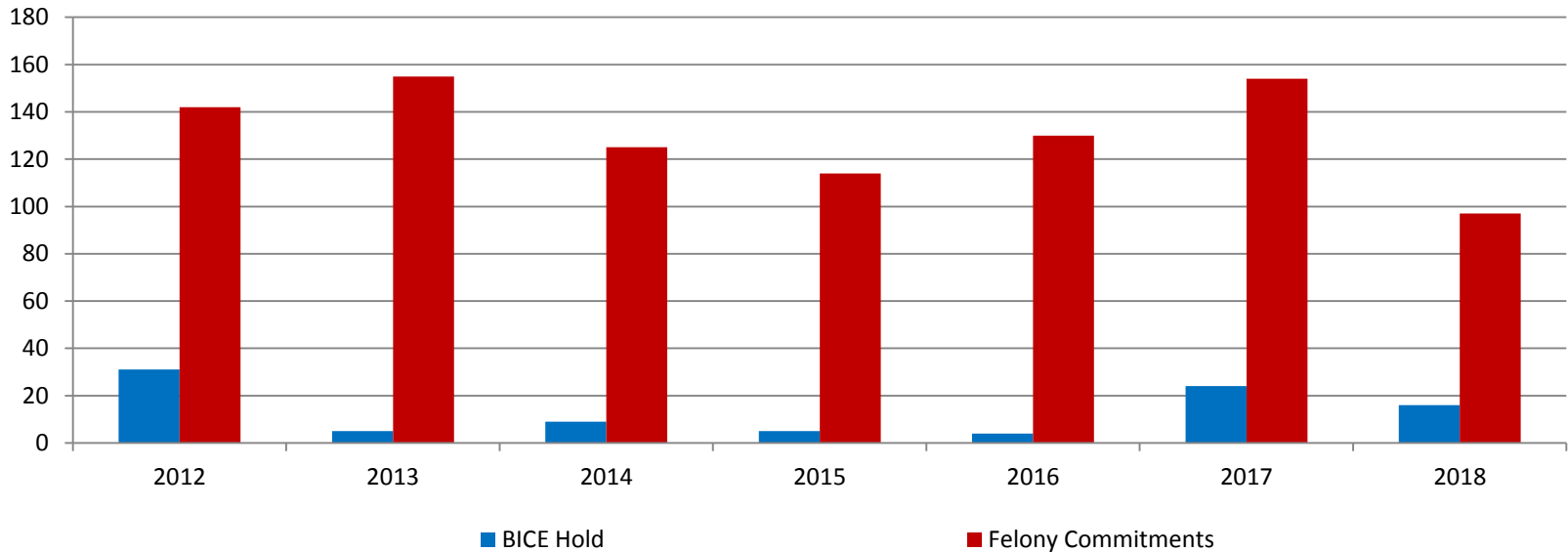
Juvenile Detention Services

August ADP	2015	2016	2017	2018
Juvenile Detention Facility	60	55	49	54
Juvenile Residential Facility	14	15	15	19
Home Based Supervision	22	28	25	20
Detention Advocacy Case Management Services	54	32	40	35
Weekend Alternative Detention Program (total)	8	11	0	0

August YTD AVERAGE	2015	2016	2017	2018
Juvenile Detention Facility	63	60	49	52
Juvenile Residential Facility	16	16	15	13
Home Based Supervision	21	27	22	25
Detention Advocacy Case Management Services	47	32	36	33
Weekend Alternative Detention Program	18	15	13	0

Monthly Jail Snapshot: August 31, 2018

Snapshots August 2012 - Present

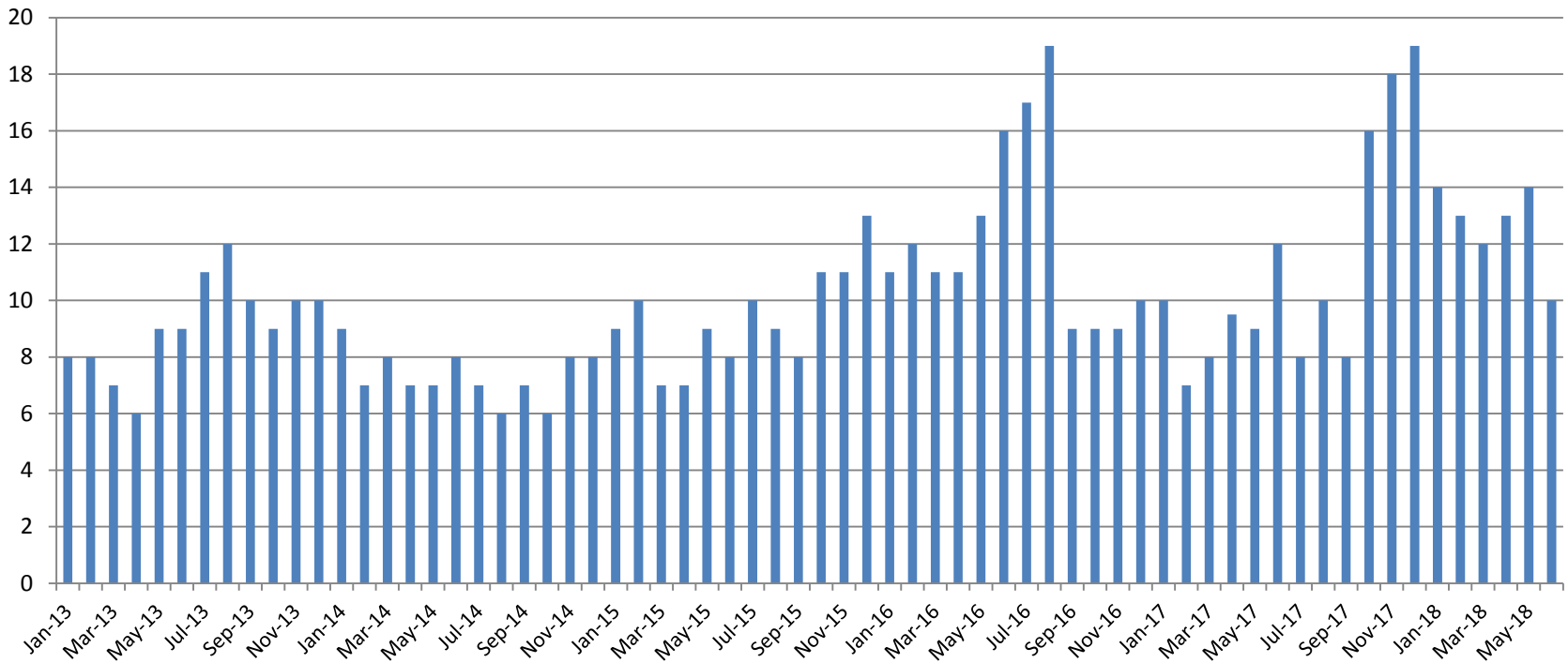


BICE Hold	2013	2014	2015	2016	2017	2018
August	5	9	5	4	24	16

Felony Commitments	2013	2014	2015	2016	2017	2018
August	155	125	114	130	154	97

(data obtained from SG CO DIO)

Journal Entry Completion (Average Days) January 2013-Present



July	2013	2014	2015	2016	2017	2018
Avg. Days	11	7	10	17	8	No data
YTD Avg.	8	8	9	13	9	12.7

(data obtained from District Court) This data is always reported a month behind

