

# Criminal Justice Coordinating Council

## Population Report & Program Trends

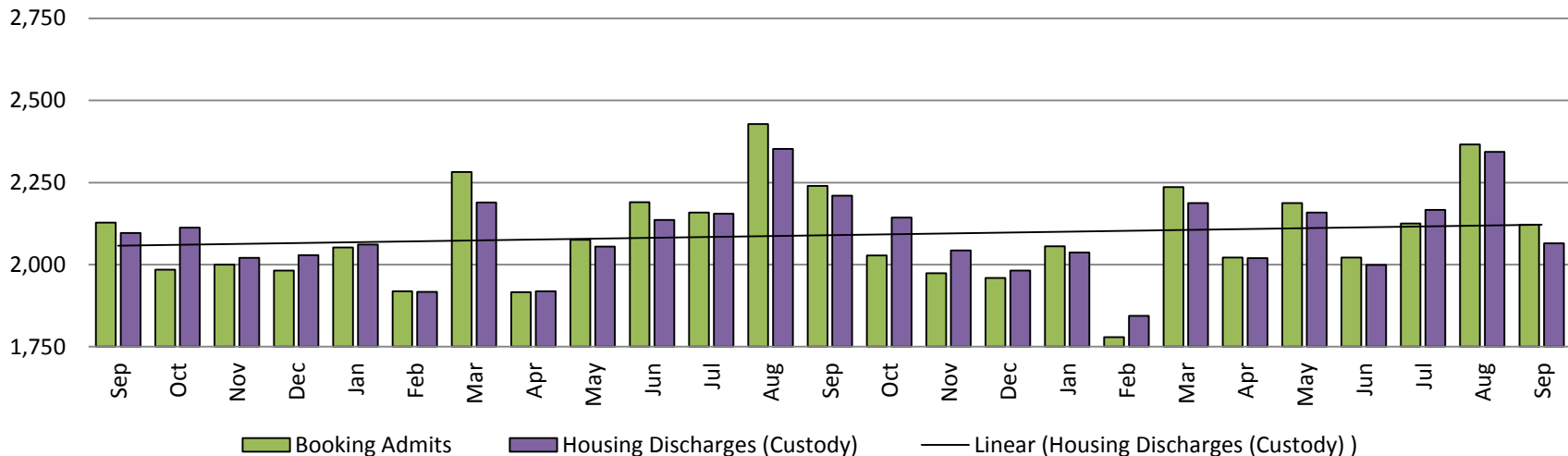
October 2018



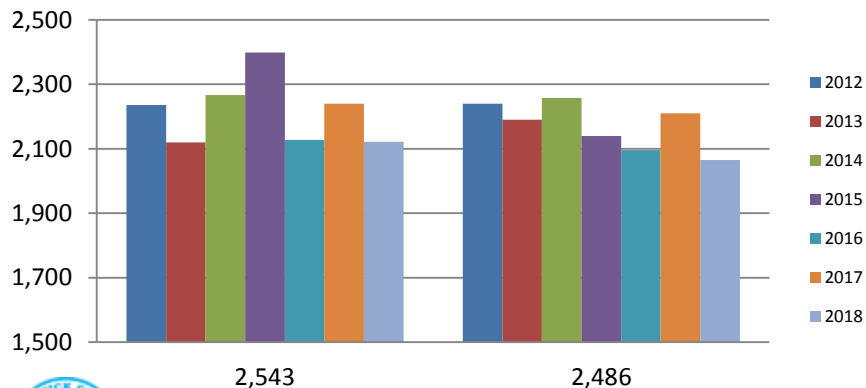
*Sedgwick County...*  
*working for you*

# Detention Facility

## Booking Admits & Housing Discharges from Custody September 2016-Present



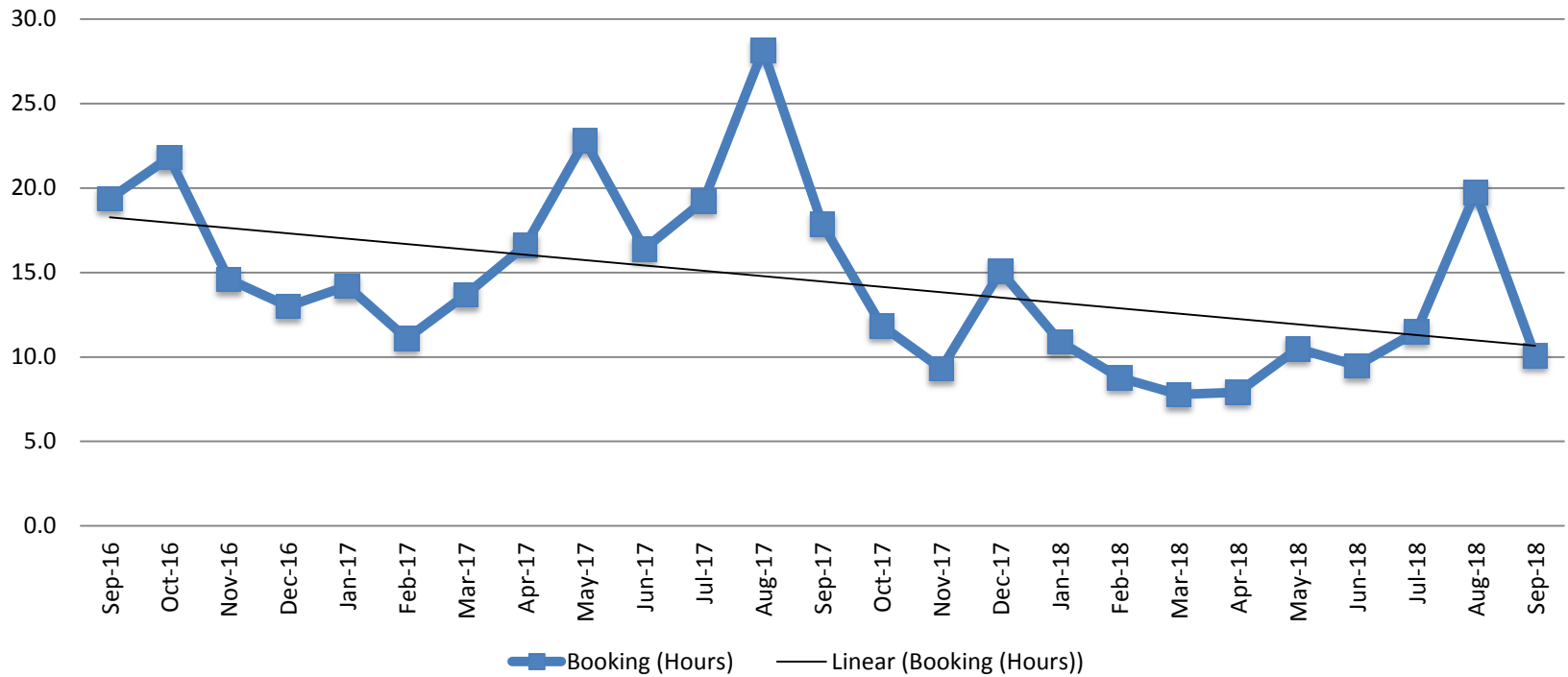
### Bookings Year over Year: Month of September



Bookings September	Housing Discharges September
2016: 2,128	2016: 2,096
2017: 2,240	2017: 2,210
2018: 2,122	2018: 2,065

(data obtained from detention facility)

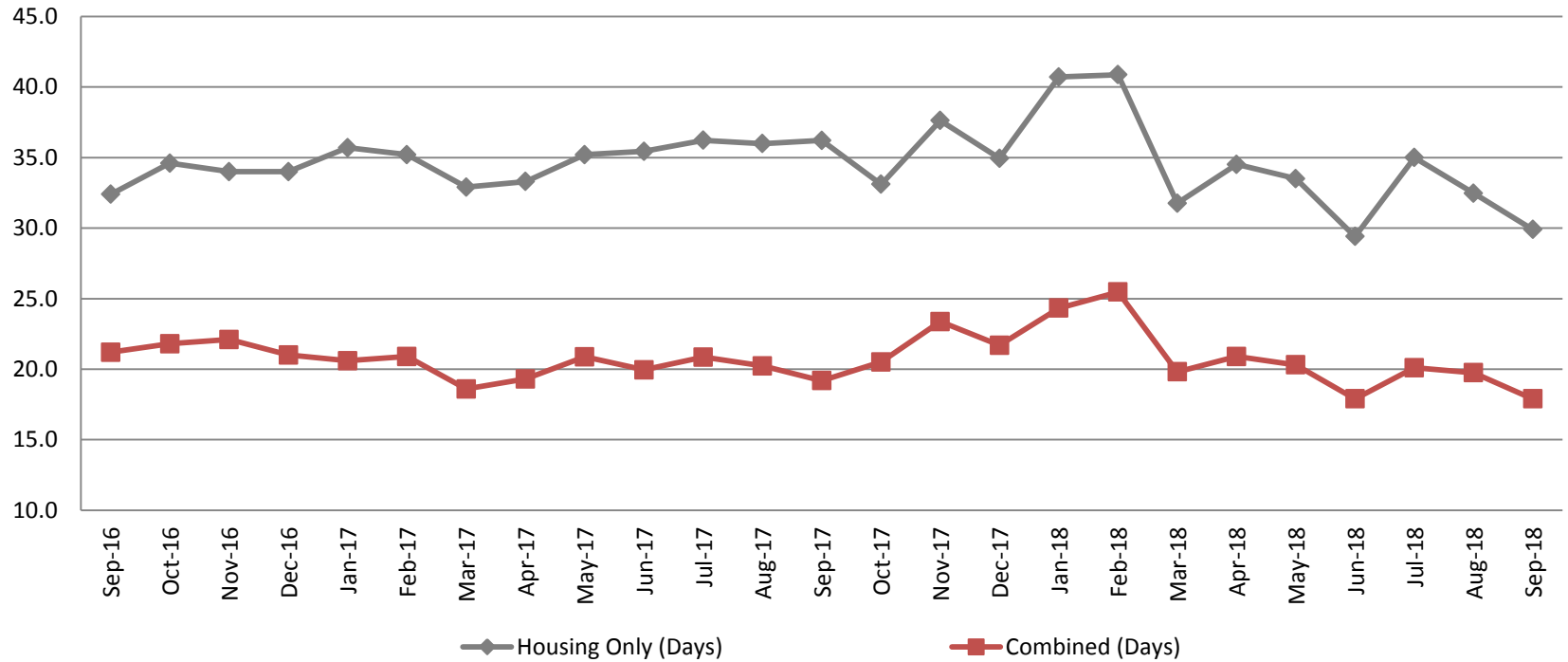
## Average Length of Stay: Booking (Hours) September 2016 - Present



September	September YTD Average
2016: 19.4	2016: 18.8
2017: 17.9	2017: 17.8
2018: 10.1	2018: 10.7



## Average Length of Stay: Housing & Combined (Days) September 2016 - Present

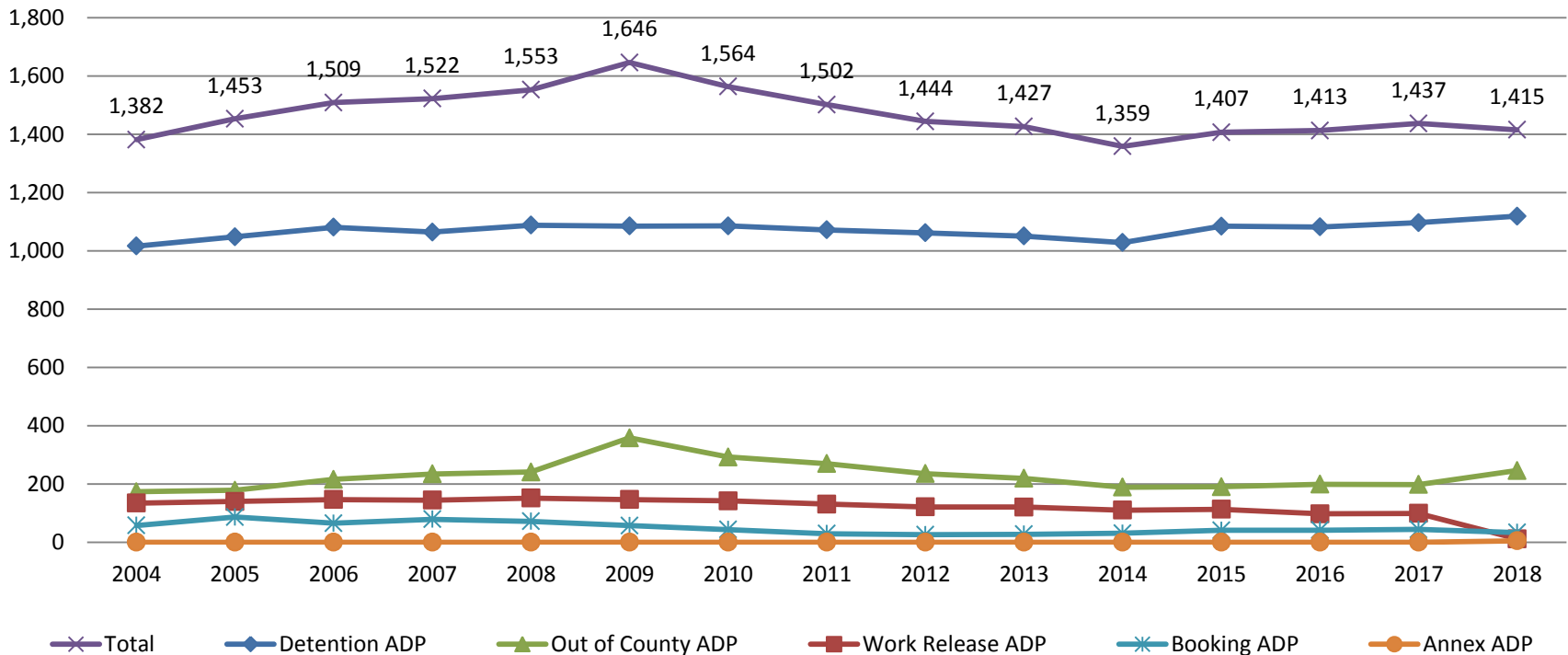


Month Year	Housing Only	Housing YTD AVG	Combined Days	Combined YTD AVG
Sept 2016	32.4	35.0	21.2	19.4
Sept 2017	36.2	35.1	19.2	20.1
Sept 2018	29.9	34.2	17.9	20.7



# Jail: Annual Average Daily Population (ADP)

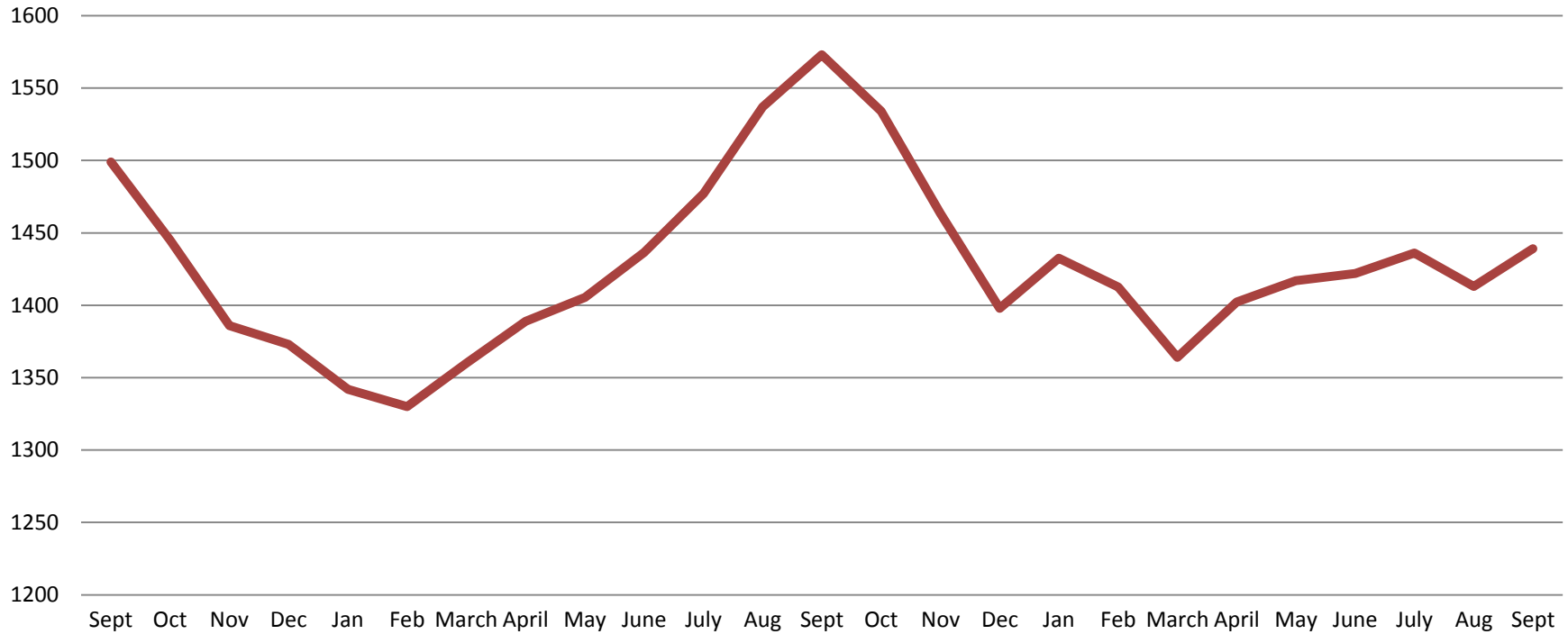
## TRENDS: Booking, Detention, Work Release, & Out of County Annual ADP: 2004 - present



\*Beginning January 2018, Work Release program began transfer to Division of Corrections



## TOTAL MONTHLY ADP: JAIL (Booking, Detention Facility, Work Release, & Out of County) September 2016 - present

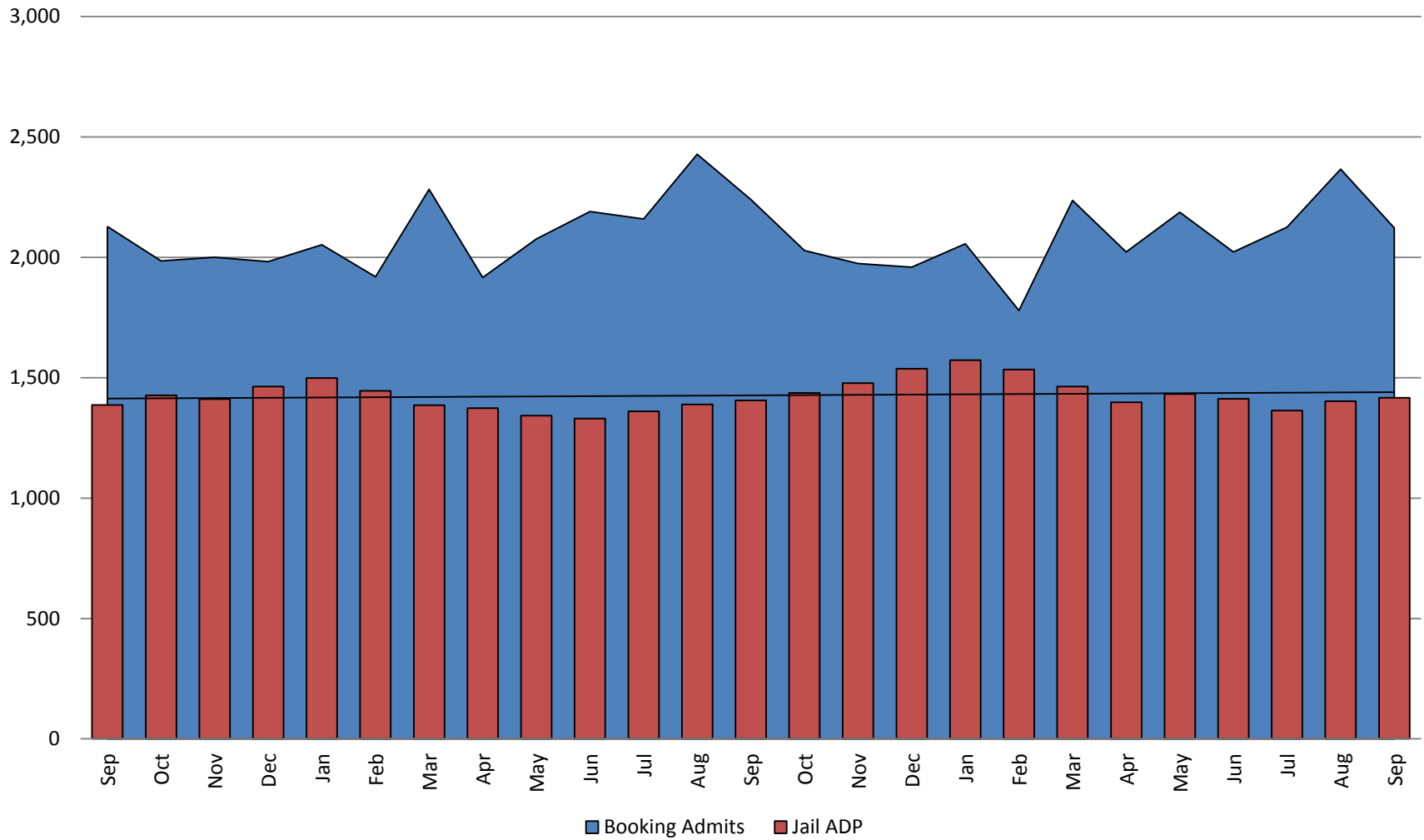


Sept 2016	Sept 2017	Sept 2018
1,499	1,573	1,439

\*Beginning January 2018, Work Release program began transfer to Division of Corrections

This slide shows total monthly ADP for individuals in booking, detention, work release, jail annex, and out-of county (combined)  
(data obtained from detention facility)

## Booking Admits & Total Monthly ADP (Jail): September 2016 - present



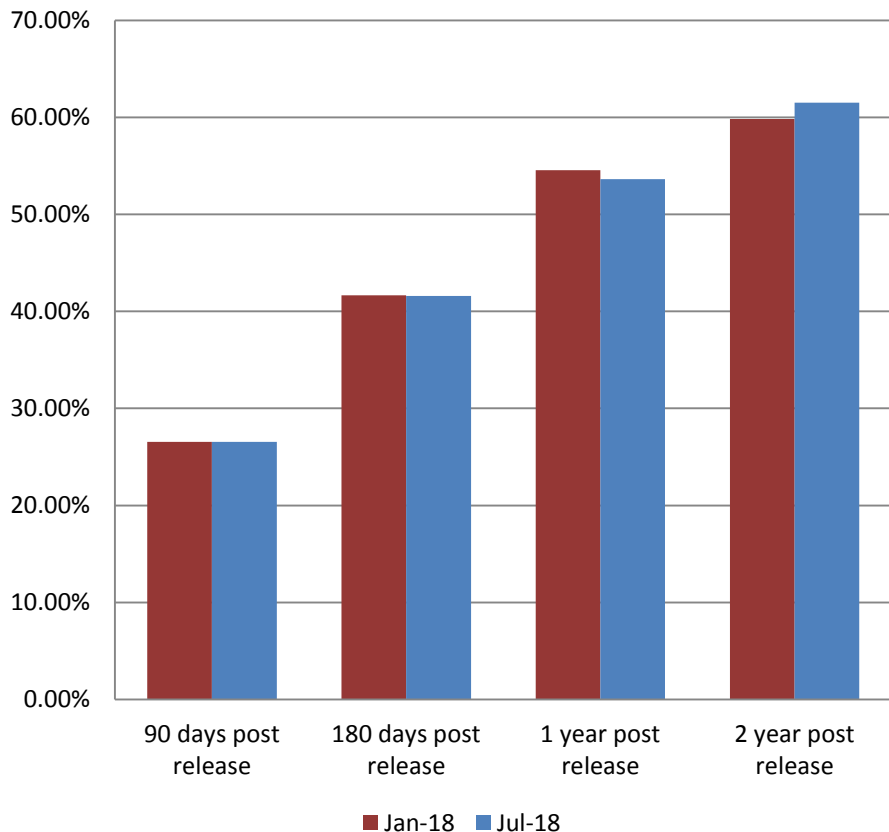
Jail includes individuals in booking, detention, work release and out-of county (combined)

(data obtained from detention facility)



*Sedgwick County...*  
*working for you*

### Percent of released inmates rearrested January & July comparison

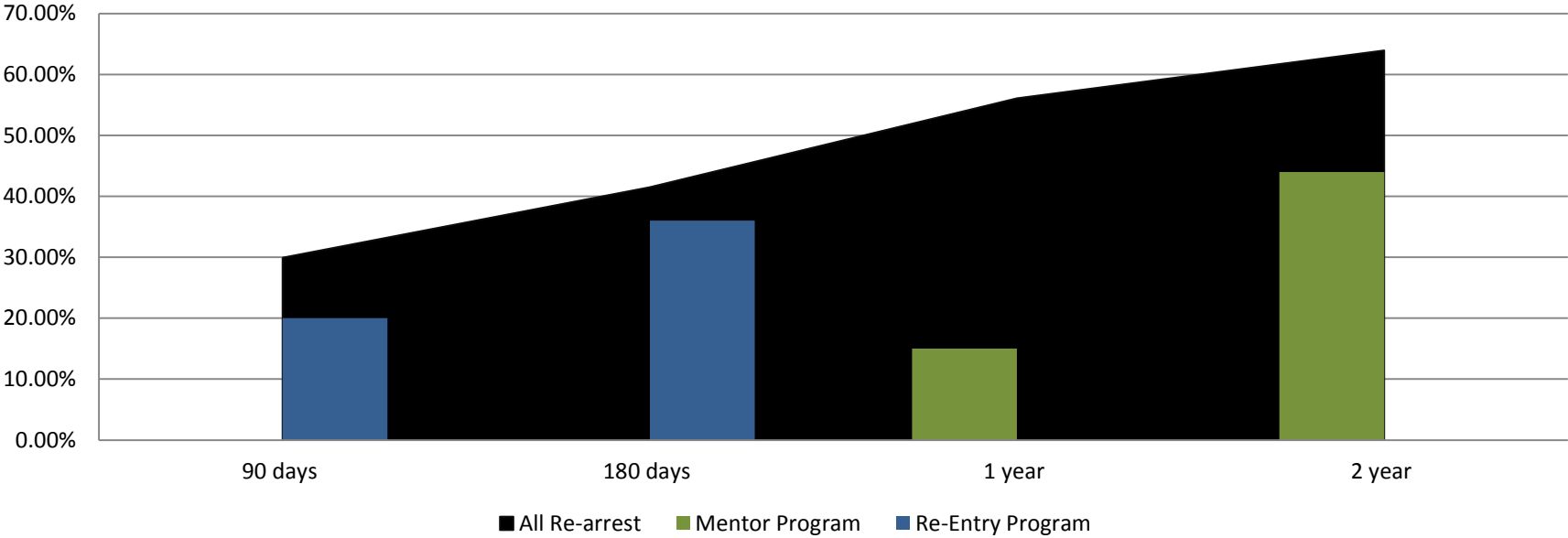


Month 2018	90 Days	180 Days	1 Year	2 Years
Jan	26.55%	41.67%	54.57%	59.84%
Feb	27.39%	40.22%	54.02%	61.03%
March	28.00%	41.08%	51.69%	60.03%
April	28.13%	39.41%	52.82%	62.93%
May	29.80%	41.88%	52.18%	62.81%
June	27.71%	41.92%	54.94%	62.07%
July	26.55%	41.60%	53.64%	61.50%
August	27.44%	44.09%	52.03%	63.51%
Sept	29.94%	41.51%	56.10%	63.95%



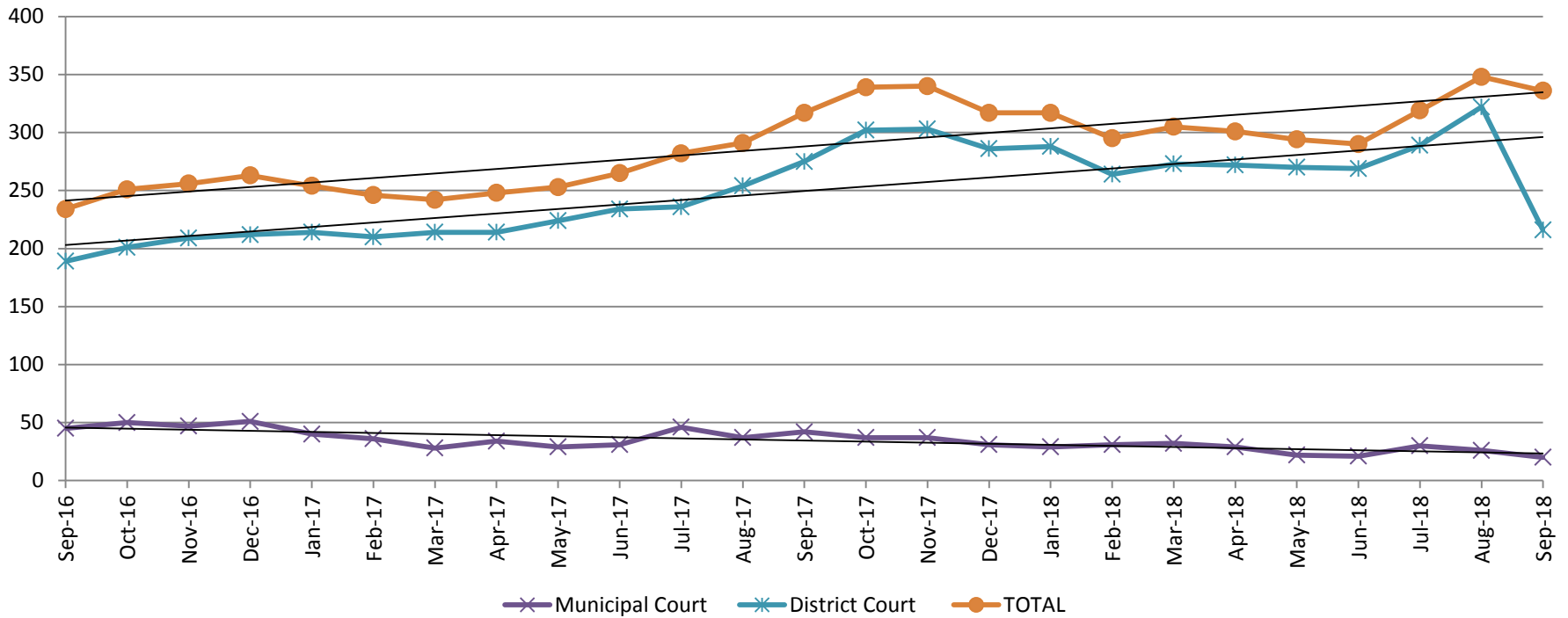


# Recidivism by Programs September 2018



September 2018	90 Days	180 Days	1 year	2 years
All Re-arrests	29.94%	41.51%	56.10%	63.95%
Mentor Program	0%	0%	15%	44%
Re-Entry Program	20%	36%	N/A	N/A

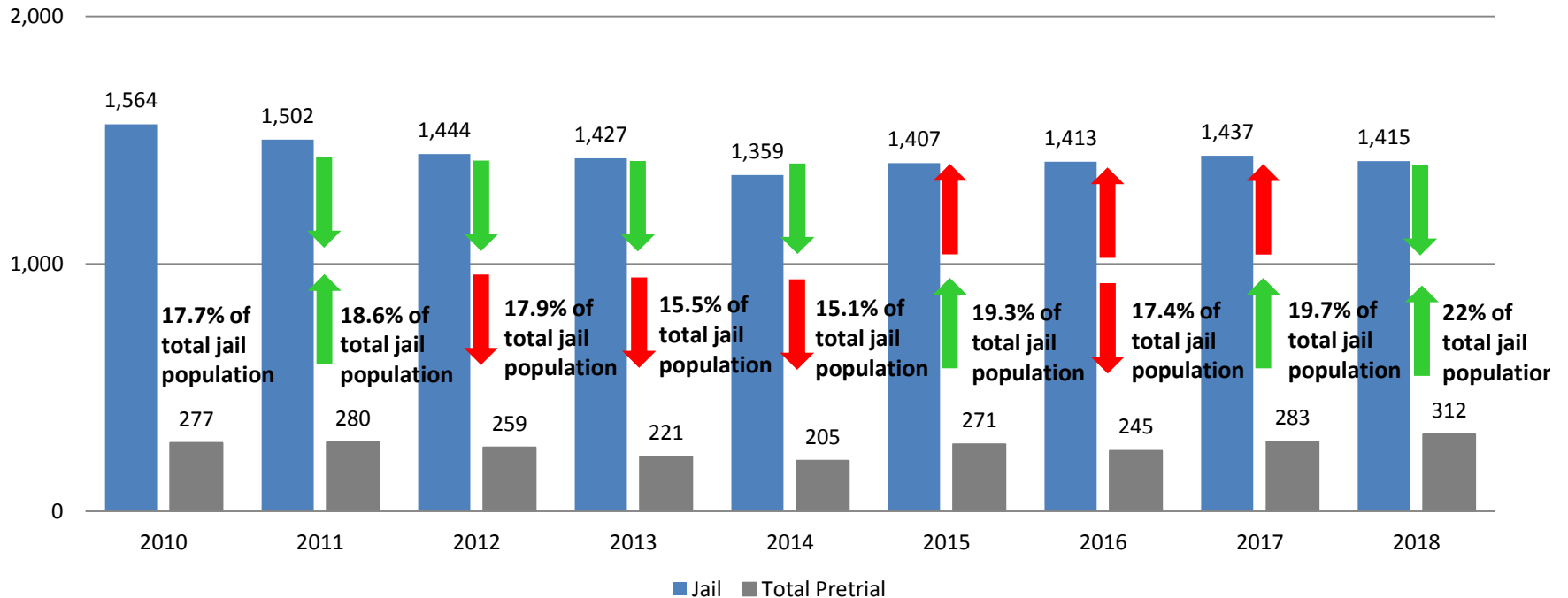
## Pretrial Services Program (PSP) Monthly ADP: September 2016 - Present



September	2016 ADP	2017 ADP	2018 ADP	2016 YTD Avg.	2017 YTD Avg.	2018 YTD Avg.
Muni. Court	45	42	20	34	36	27
Dist. Court	189	275	216	207	231	274
<b>Total</b>	<b>234</b>	<b>317</b>	<b>336</b>	<b>242</b>	<b>266</b>	<b>312</b>

# Correlation: Total & PSP

## Total Annual ADP: 2010 - Present

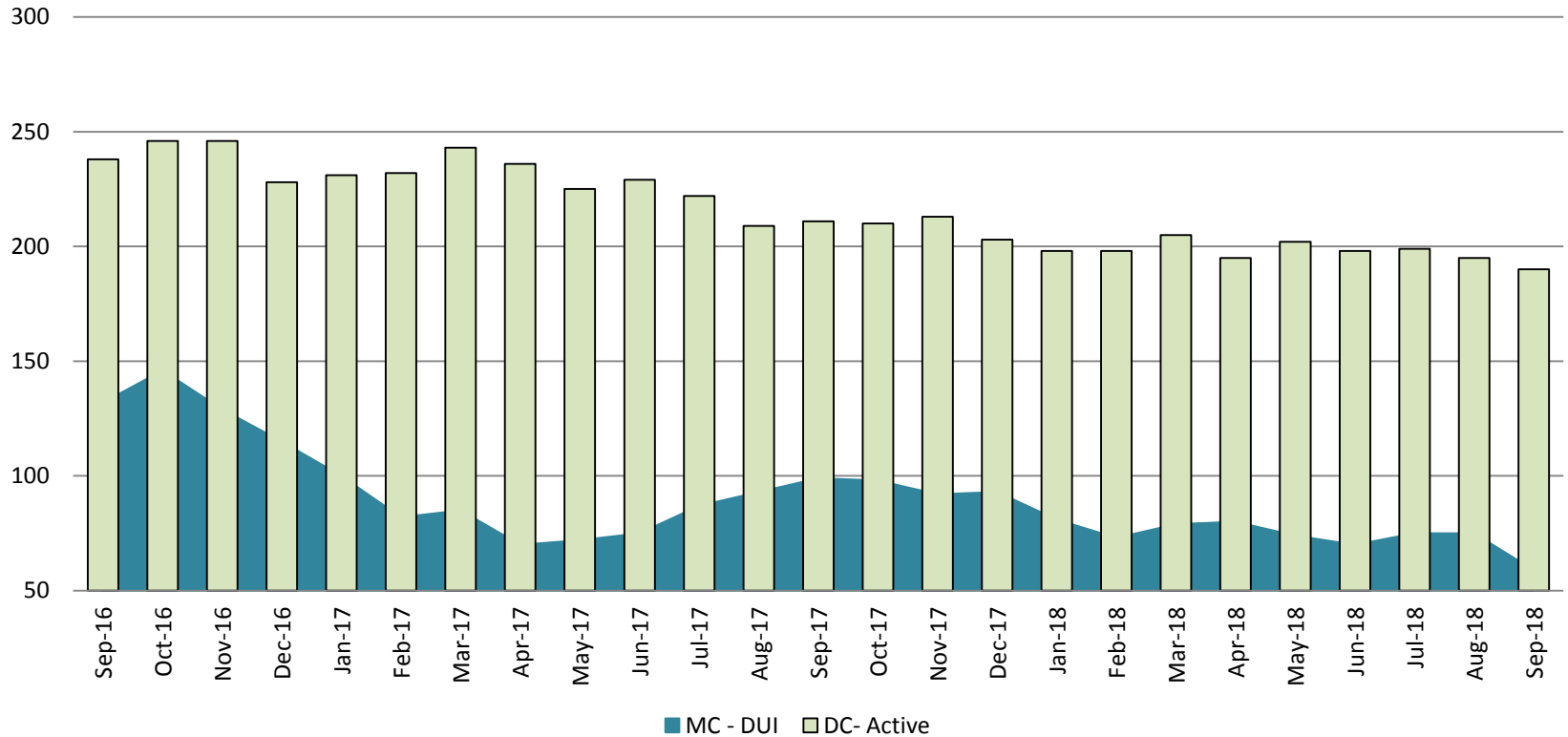


Arrows represent the overall increase/decrease of the population from year to year

Jail includes individuals in booking, detention, work release and out-of county (combined)

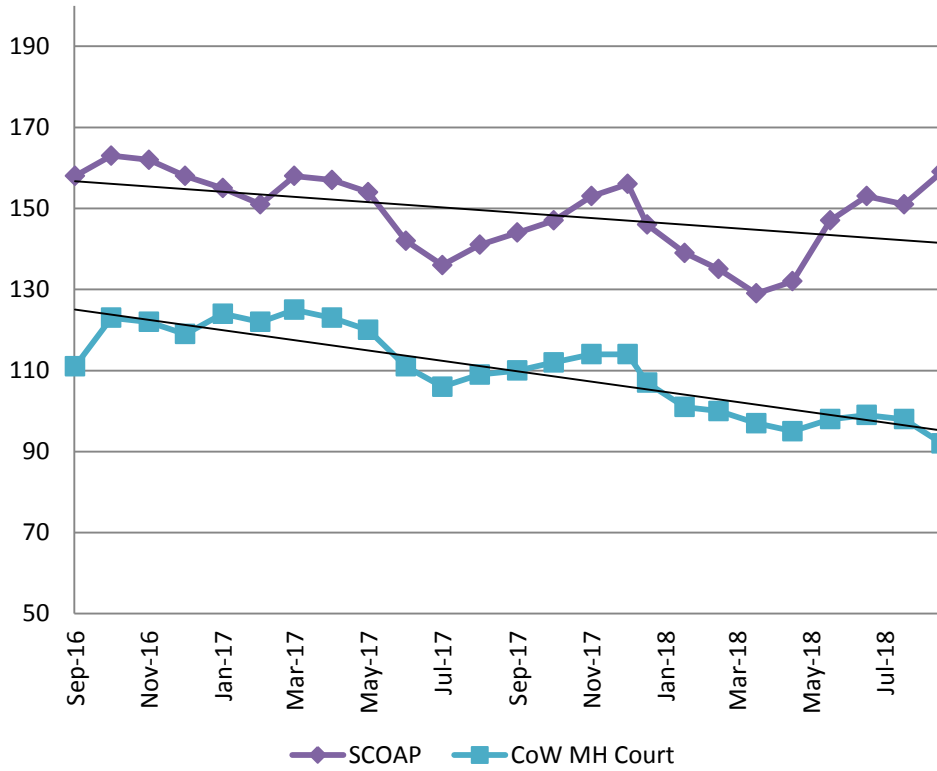


## Diversion - Active Caseload September 2016 - Present

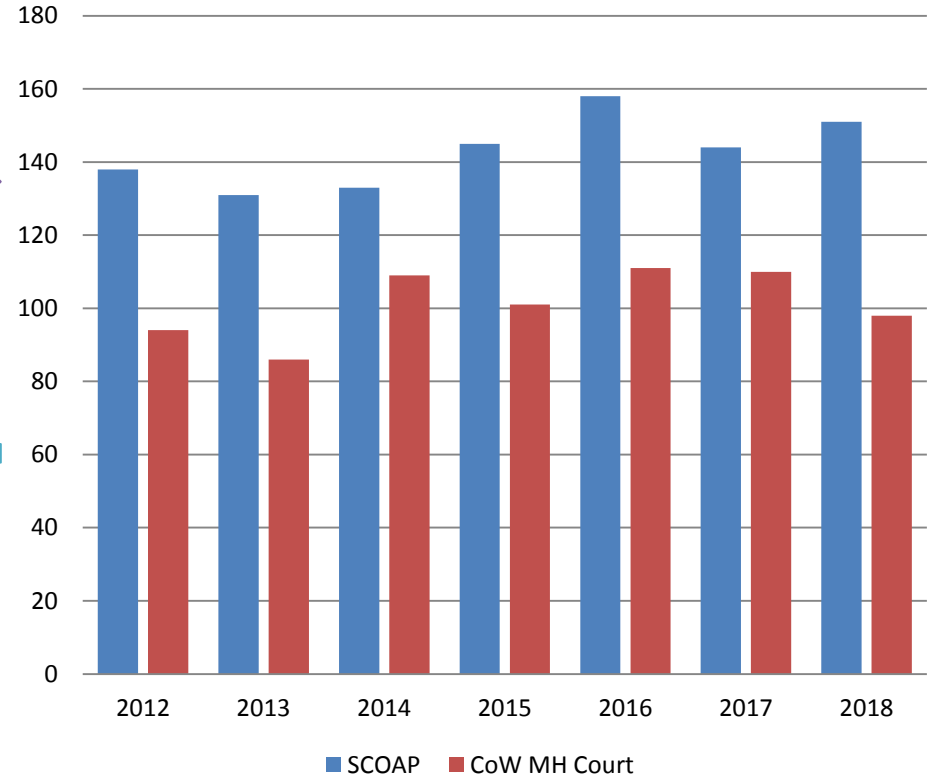


September	2016	2017	2018	2016 YTD Avg.	2017 YTD Avg.	2018 YTD Avg.
Muni. Court- DUI	132	99	59	152	85	74
Dist. Court- Active	238	211	190	235	226	198

## Mental Health - ADP September 2016 - present

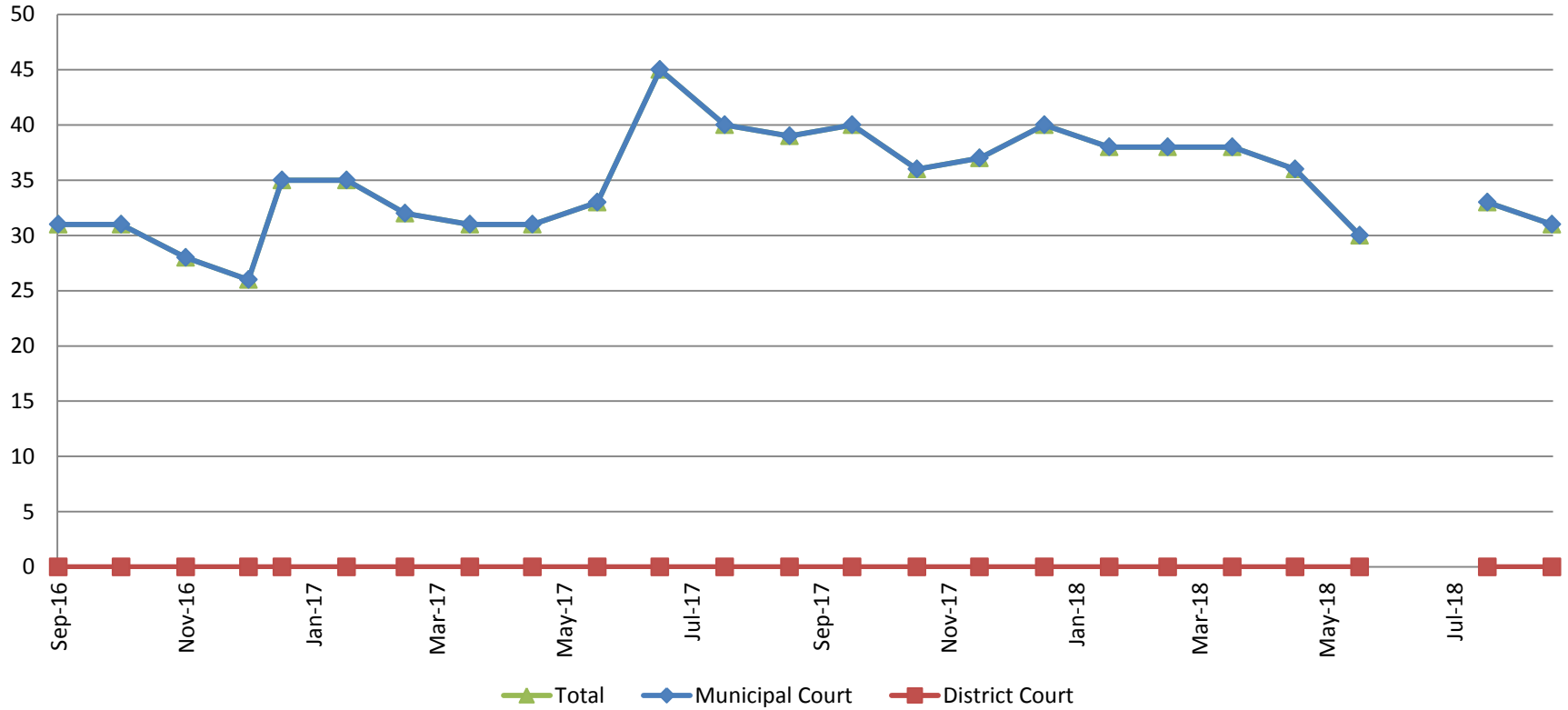


## Mental Health ADP Year over Year- September



Sept	2016 ADP	2017 ADP	2018 ADP	2016 YTD Avg.	2017 YTD Avg.	2018 YTD Avg.
SCOAP	158	144	159	158	149	143
MH Court	111	110	92	104	117	99

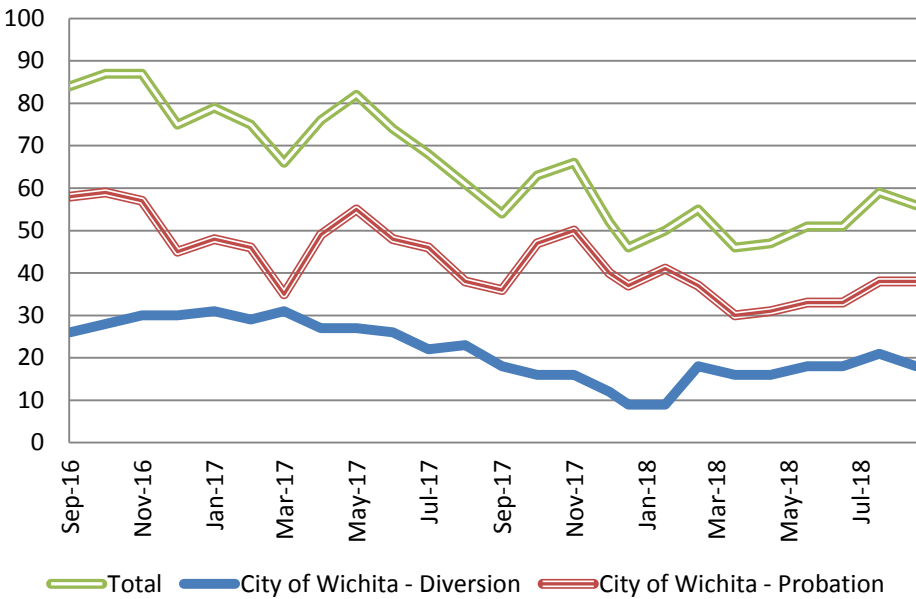
## Day Reporting - Active Caseload September 2016-present



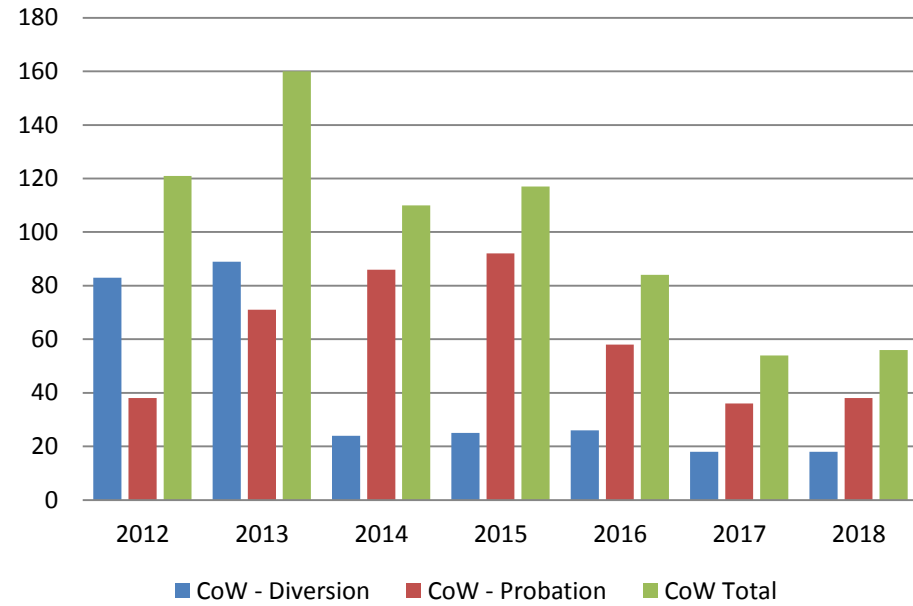
September	2013	2014	2015	2016	2017	2018
Muni. Court	79	50	68	31	39	31
Muni. Court YTD Avg.	78	70	71	42	36	36



## Drug Court - City of Wichita ADP: September 2016- present



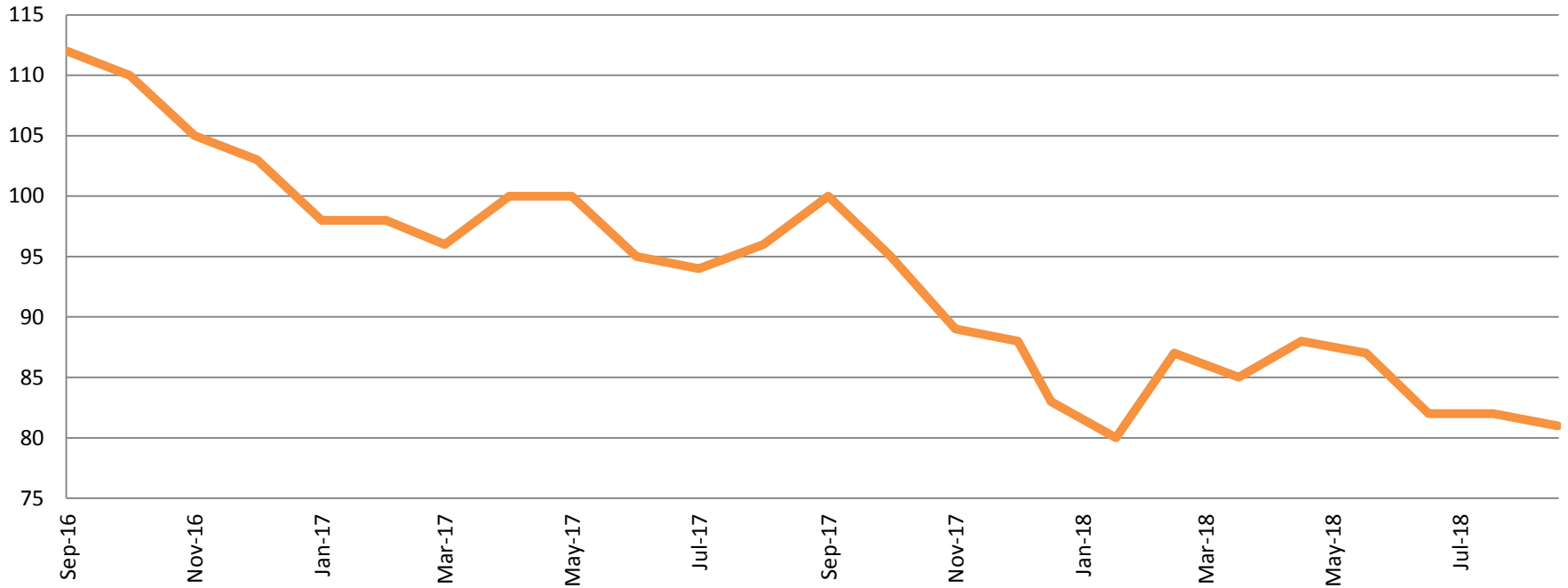
## Drug Court- City of Wichita Year over Year- September



September	2016	2017	2018
Diversion	26	18	18
Probation	58	36	38
Total	84	54	56



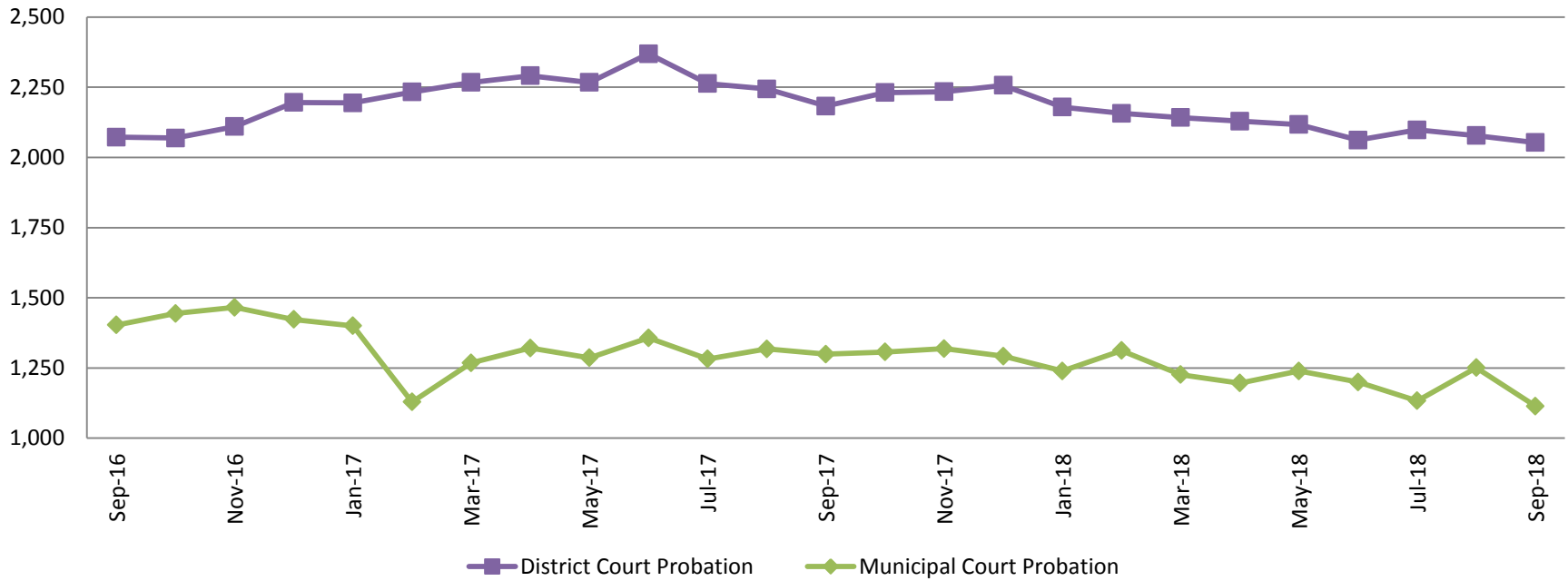
## Drug Court - Sedgwick County ADP: September 2016 - present



<b>September</b>	<b>2016</b>	<b>2017</b>	<b>2018</b>
Sedg. Co. ADP	112	100	81
YTD Avg.	110	97	84

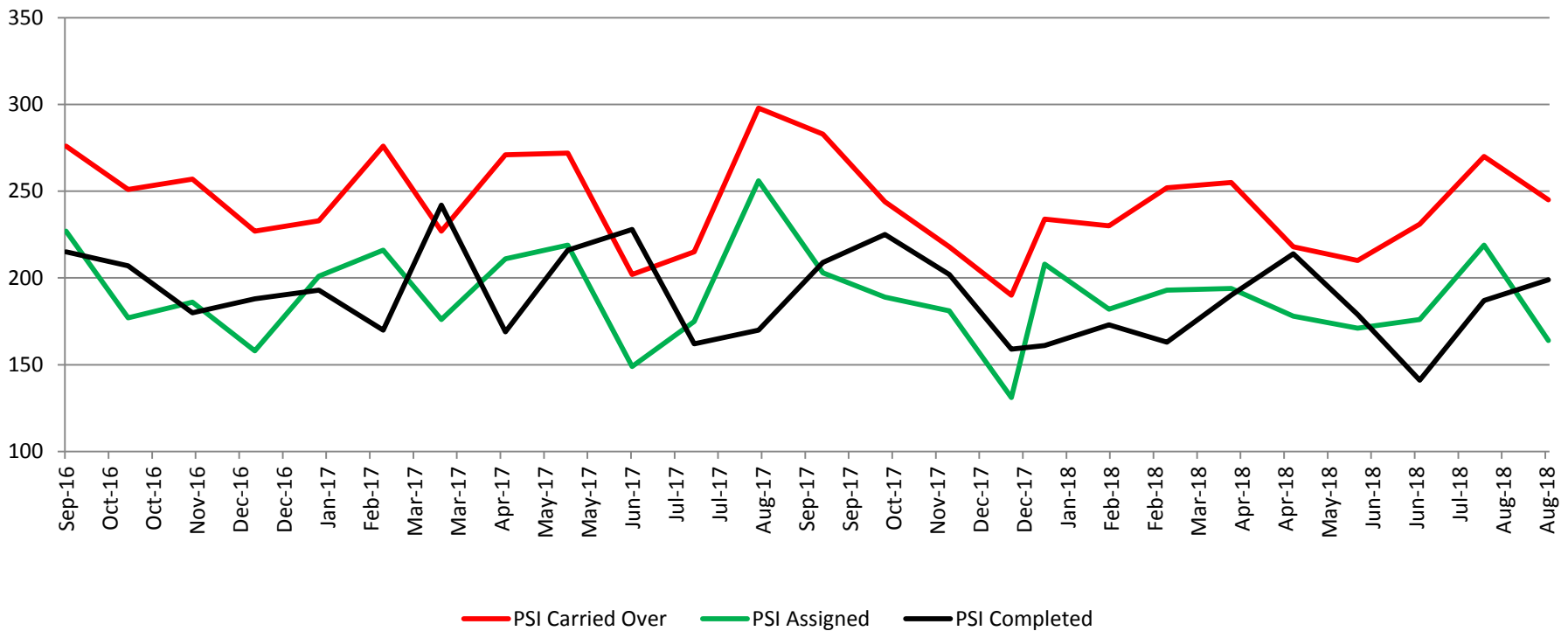


## Probation - Active Caseloads September 2016 - present



September	2016	2017	2018	2016 YTD Avg.	2017 YTD Avg.	2018 YTD Avg.
Dist. Court Probation	2,072	2,183	2,053	2,176	2,257	2,113
Muni. Court Probation	1,403	1,299	1,114	1,512	1,296	1,212

## District Court Probation: Pre-Sentence Investigation September 2016 - present

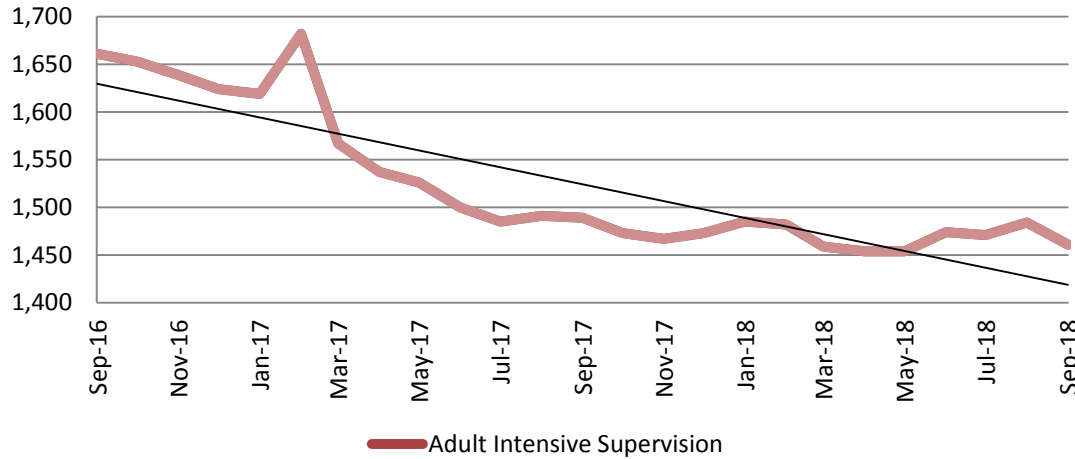


<b>September</b>	<b>2016</b>	<b>2017</b>	<b>2018</b>
Carried Over	276	283	245
Assigned	227	203	164
Completed	215	209	199



# Community Corrections

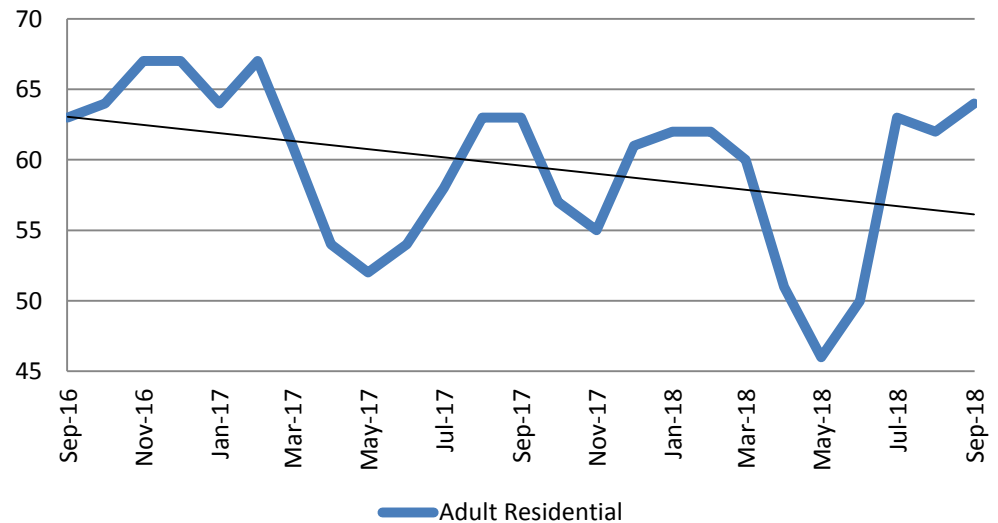
**Adult Intensive Supervision Probation (AISP):  
ADP September 2016- present**



Year	Sept	Sept YTD Avg.
2016	1,661	1,625
2017	1,489	1,544
2018	1,461	1,469

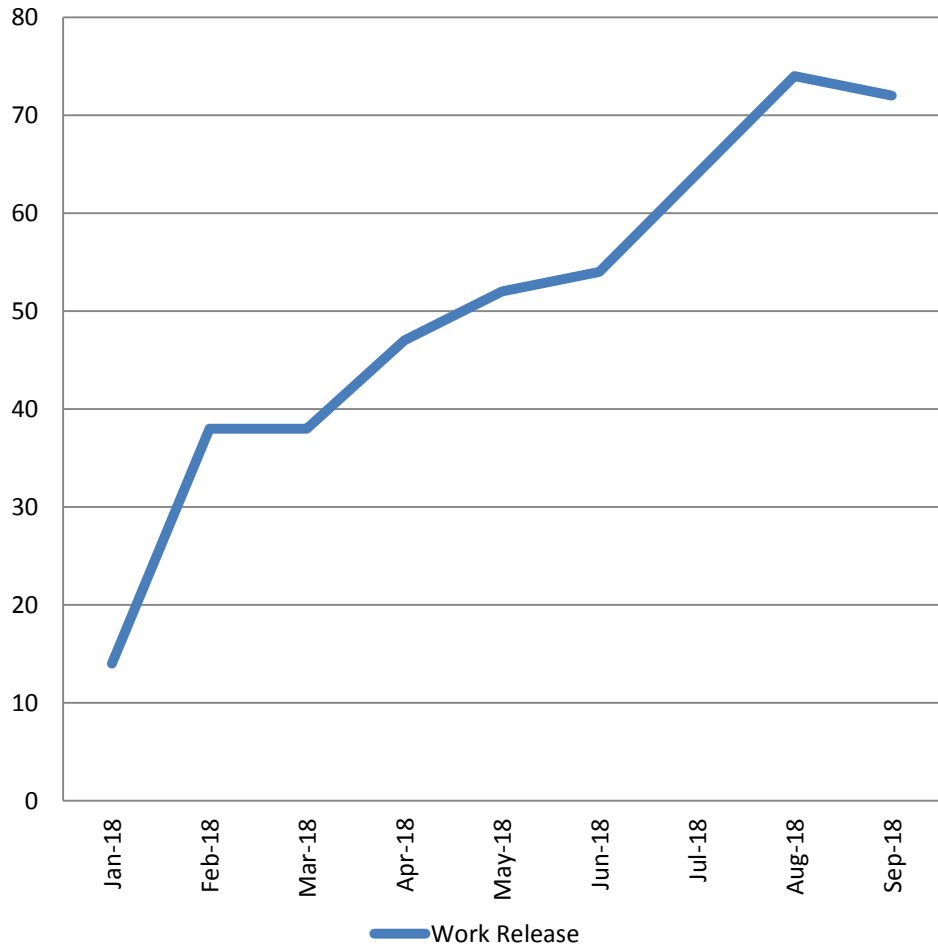
**Adult Residential: ADP  
September 2016- present**

Year	Sept	Sept YTD Avg.
2016	63	63
2017	63	60
2018	64	58



# Community Corrections

**Work Release: ADP  
Jan 2018- present**

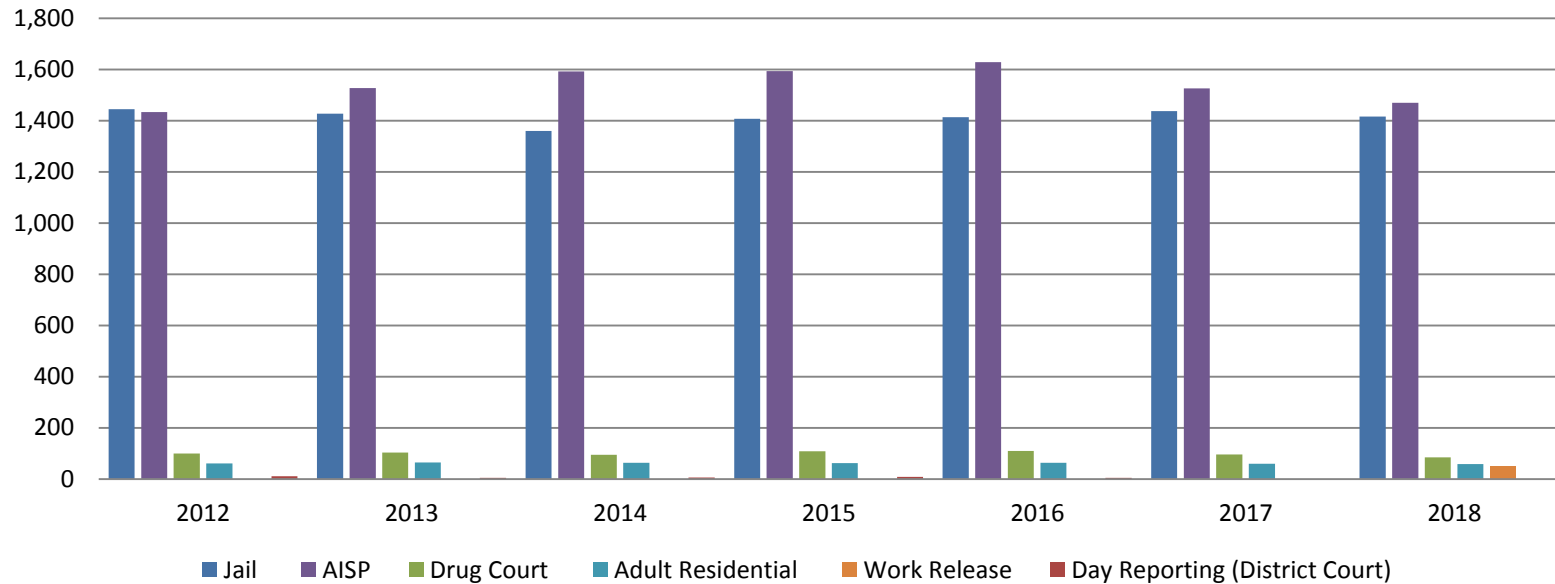


Month	Total	YTD Avg.
January	14	14
February	38	26
March	38	30
April	47	34
May	52	38
June	54	41
July	64	44
August	74	48
September	72	50



# Correlation: Total & Sedgwick County Programs (Adult)

## Total Annual ADP 2012-Present



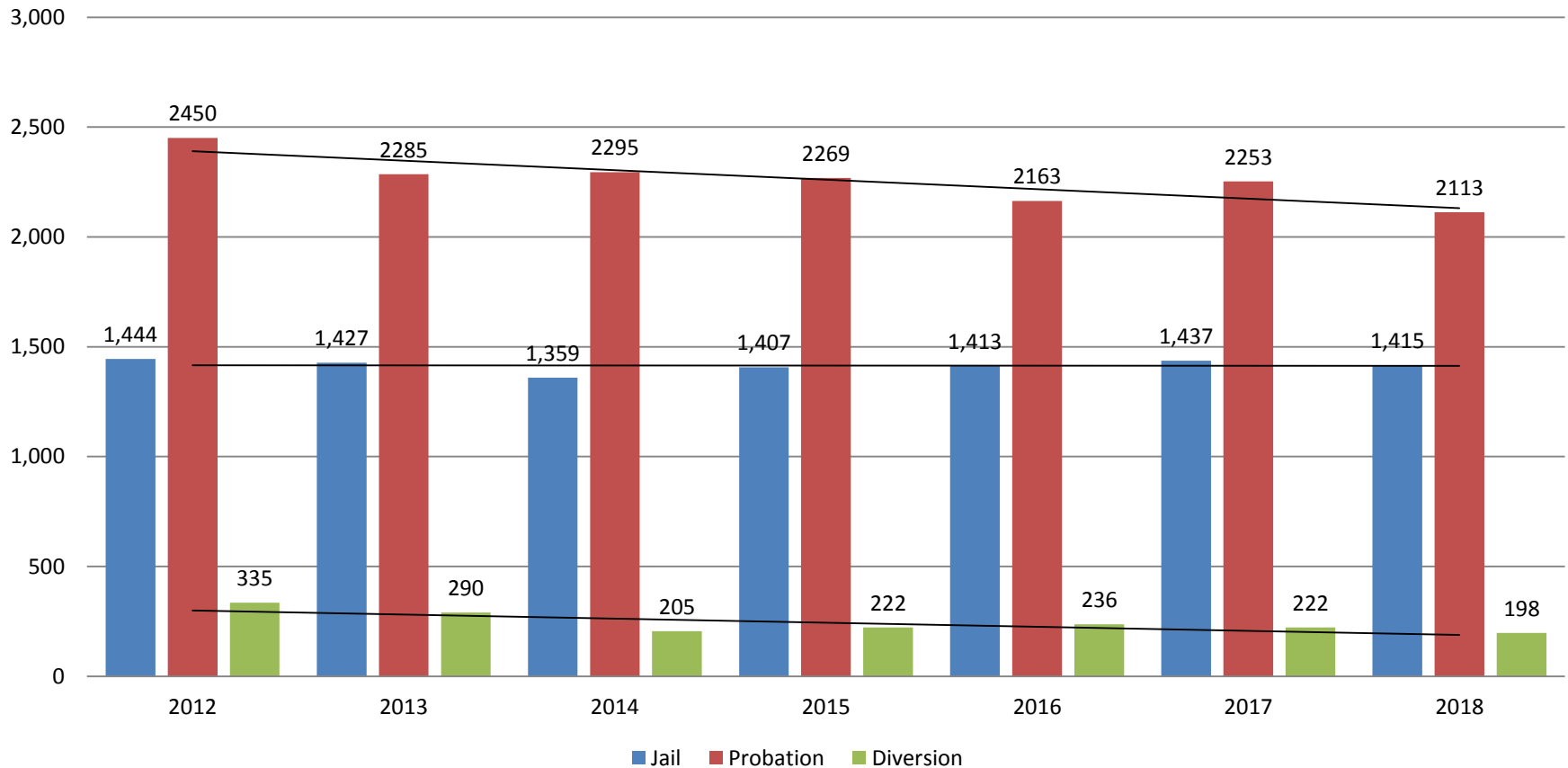
	2016	2017	2018
Jail	1,413	1,437	1,415
AISP	1,629	1,526	1,469
Drug Court	109	96	84
Adult Residential	63	59	58
Work Release	0	0	50
Day Reporting (DC)	4	0	0



Jail includes individuals in booking, detention, work release and out-of county (combined)  
 Sedgwick County... working for you (data obtained from detention facility, SG Dept. of Corrections, Pretrial Services, & CoW)

# Correlation: Total & District Court Programs

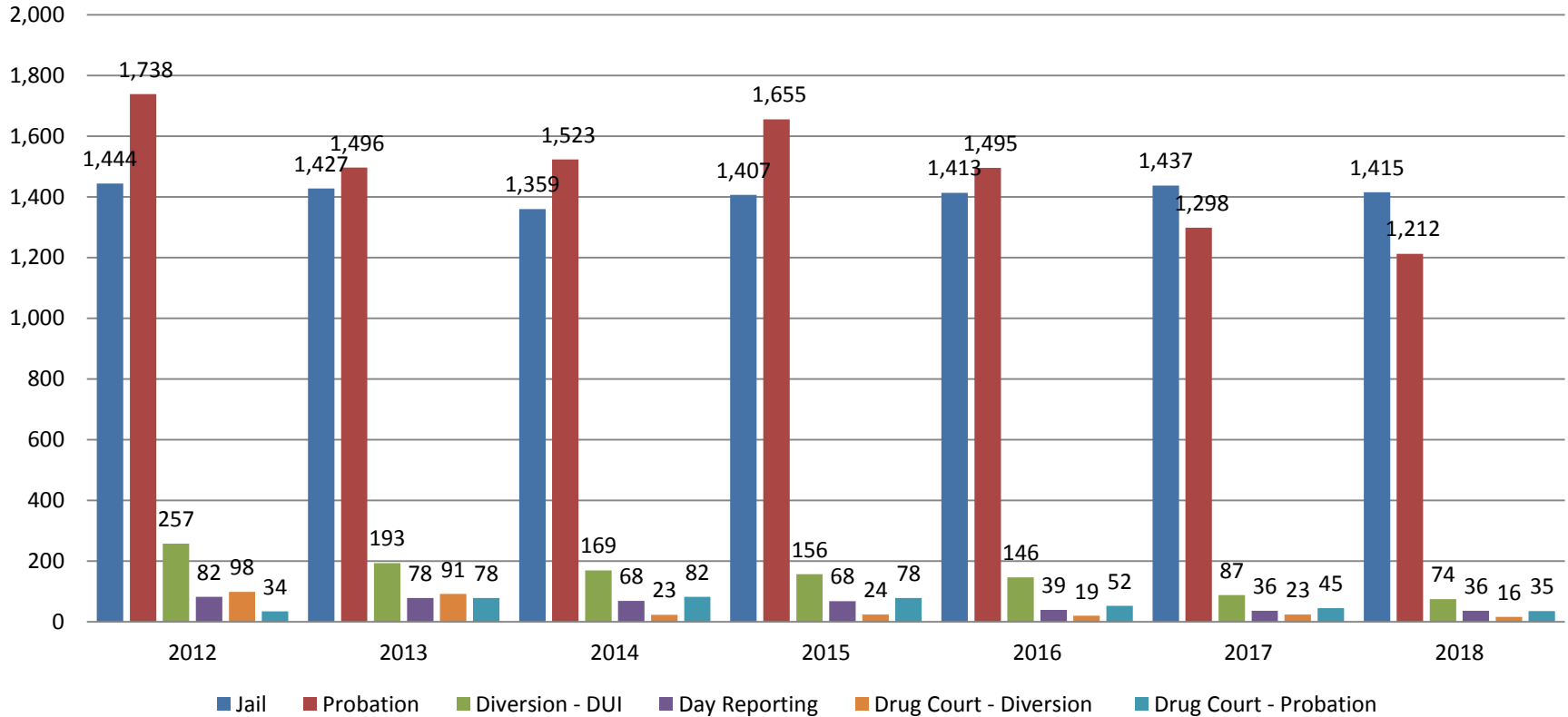
## Total Annual ADP: 2012 - Present



Jail includes individuals in booking, detention, work release and out-of county (combined)

# Correlation: Total & City of Wichita / Municipal Court Programs

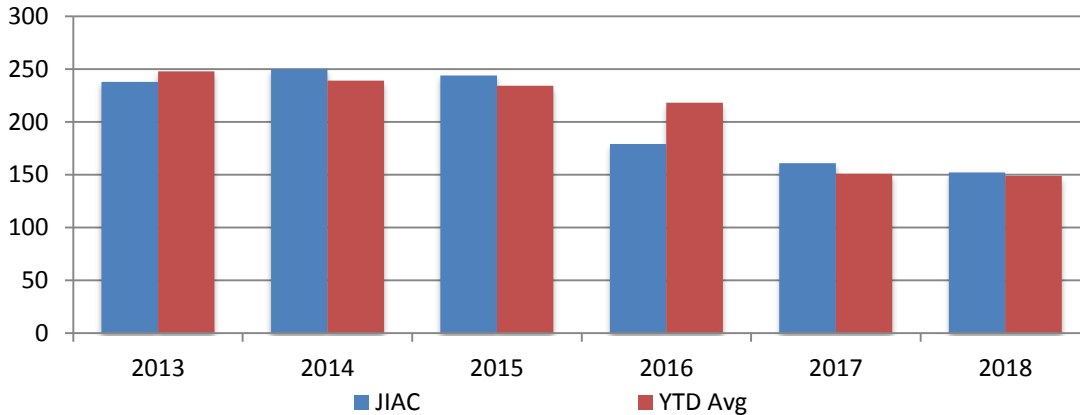
**Total Annual ADP: 2012 - present**



Jail includes individuals in booking, detention, work release and out-of county (combined)

# Juvenile

**JIAC Intakes  
September 2013 - present**

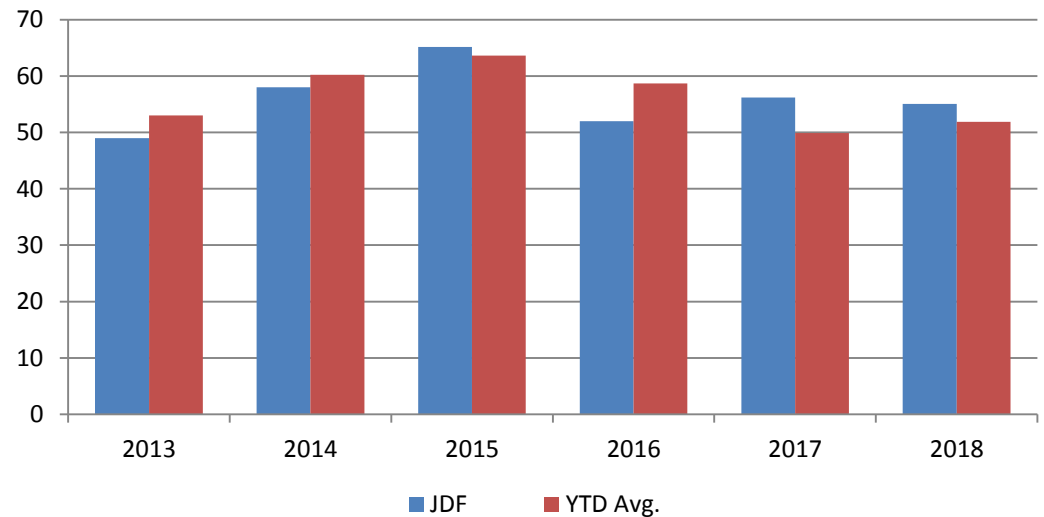


Year	Sept	Sept YTD Avg.
2013	238	248
2014	250	239
2015	244	234
2016	179	218
2017	161	151
2018	152	149

**Year Sept Sept YTD Avg.**

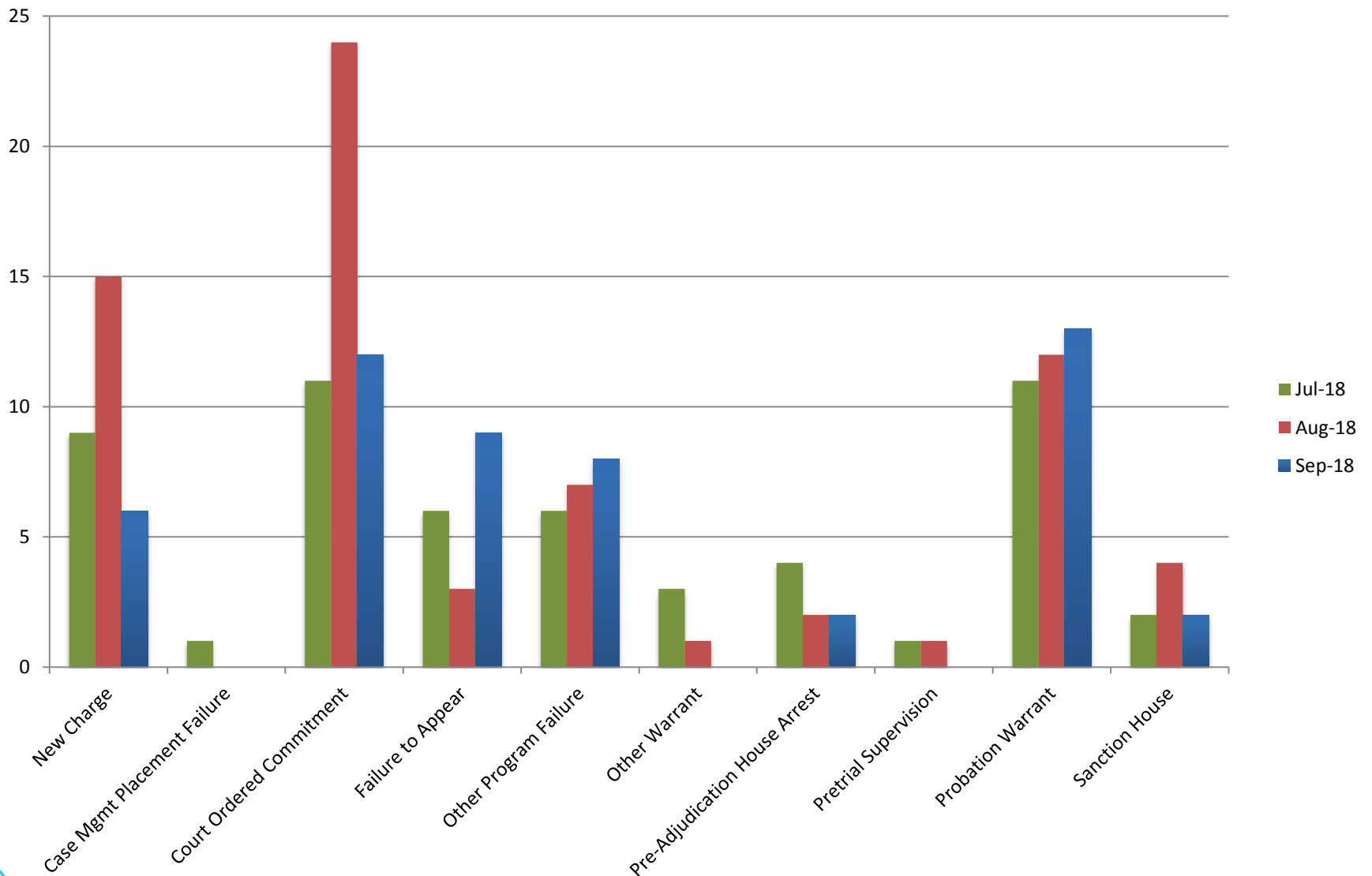
2013	49	53
2014	58	60
2015	65	64
2016	52	59
2017	56	50
2018	55	52

**JDF ADP  
September 2013 - present**





# Reason for JDF Admits



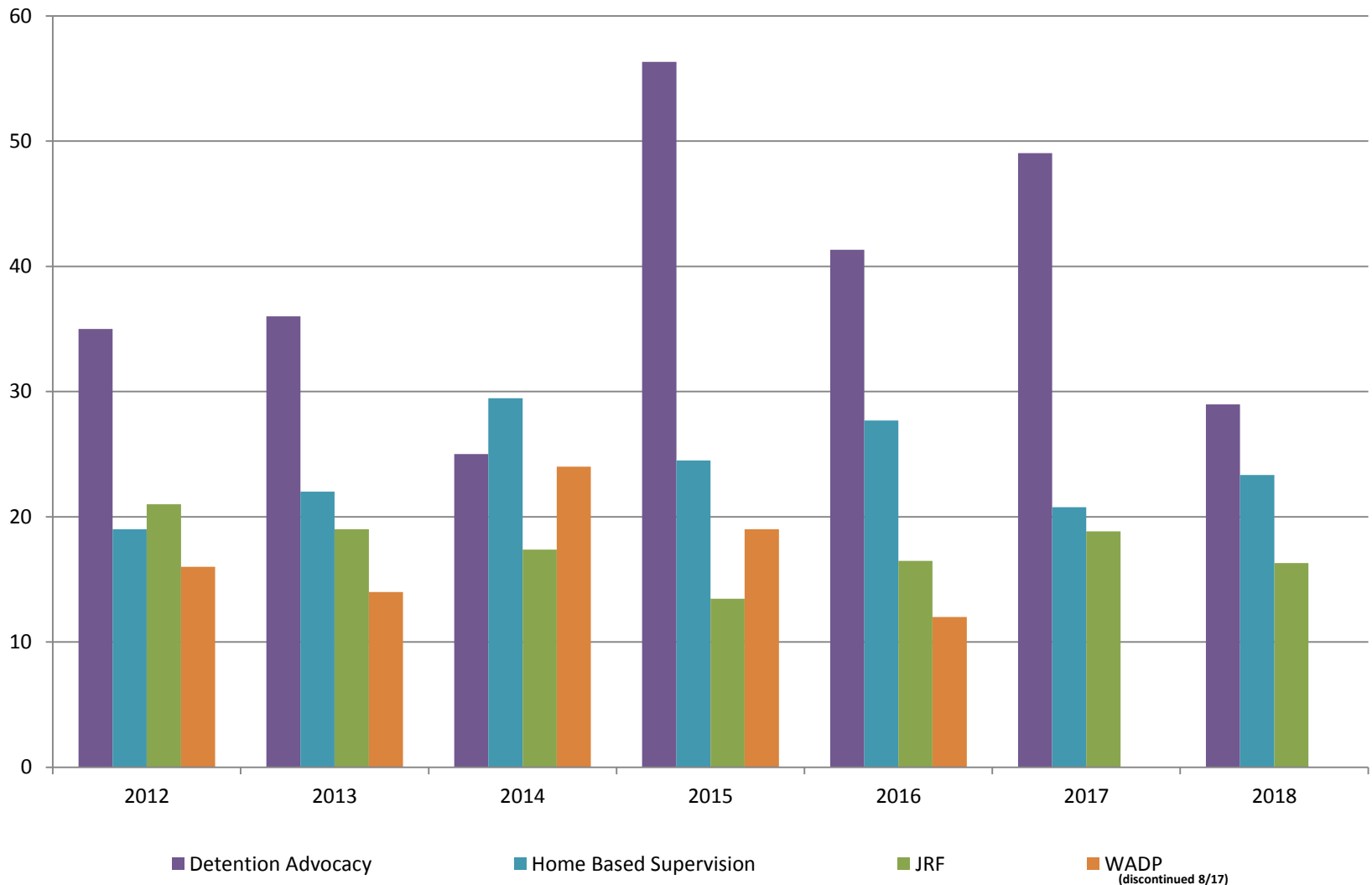
## Reason for JDF Admits

Reason	Jan 2018	Feb 2018	March 2018	April 2018	May 2018	June 2018	July 2018	Aug 2018	Sept 2018
New Charges	11	11	20	11	12	17	9	15	11
Case Management Placement Failures	0	0	0	0	1	4	1	0	0
Court Ordered Commitment	4	5	10	8	16	9	11	24	4
Failure to Appear	5	4	4	9	3	4	6	3	5
Other Program Failure	0	2	6	2	2	2	6	7	0
Other Warrant	4	6	4	1	1	0	3	1	4
Pre-Adjudication House Arrest	2	7	6	3	1	6	4	2	2
Pretrial Supervision	1	2	3	0	1	0	1	1	1
Probation Warrant	6	4	10	9	10	6	22	12	6
Sanction House	7	0	4	3	2	2	2	4	7



# Juvenile Detention Alternatives

**ADP: September 2012 - Present**



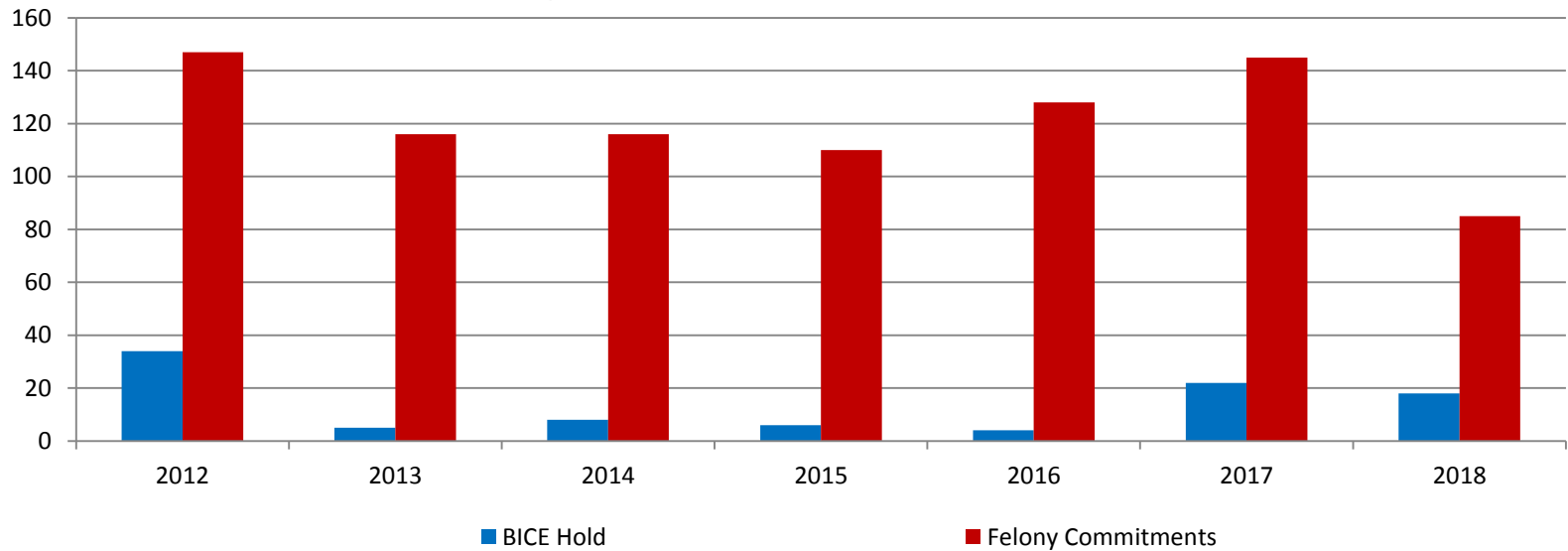
# Juvenile Detention Services

<b>September ADP</b>	<b>2015</b>	<b>2016</b>	<b>2017</b>	<b>2018</b>
Juvenile Detention Facility	65	52	56	55
Juvenile Residential Facility	13	16	19	16
Home Based Supervision	25	28	21	23
Detention Advocacy Case Management Services	56	41	49	29
Weekend Alternative Detention Program (total)	19	12	0	0

<b>September YTD AVERAGE</b>	<b>2015</b>	<b>2016</b>	<b>2017</b>	<b>2018</b>
Juvenile Detention Facility	64	59	50	52
Juvenile Residential Facility	16	16	15	13
Home Based Supervision	22	27	22	25
Detention Advocacy Case Management Services	48	33	37	32
Weekend Alternative Detention Program	18	15	11	0

# Monthly Jail Snapshot: August 31, 2018

## Snapshots September 2012 - Present



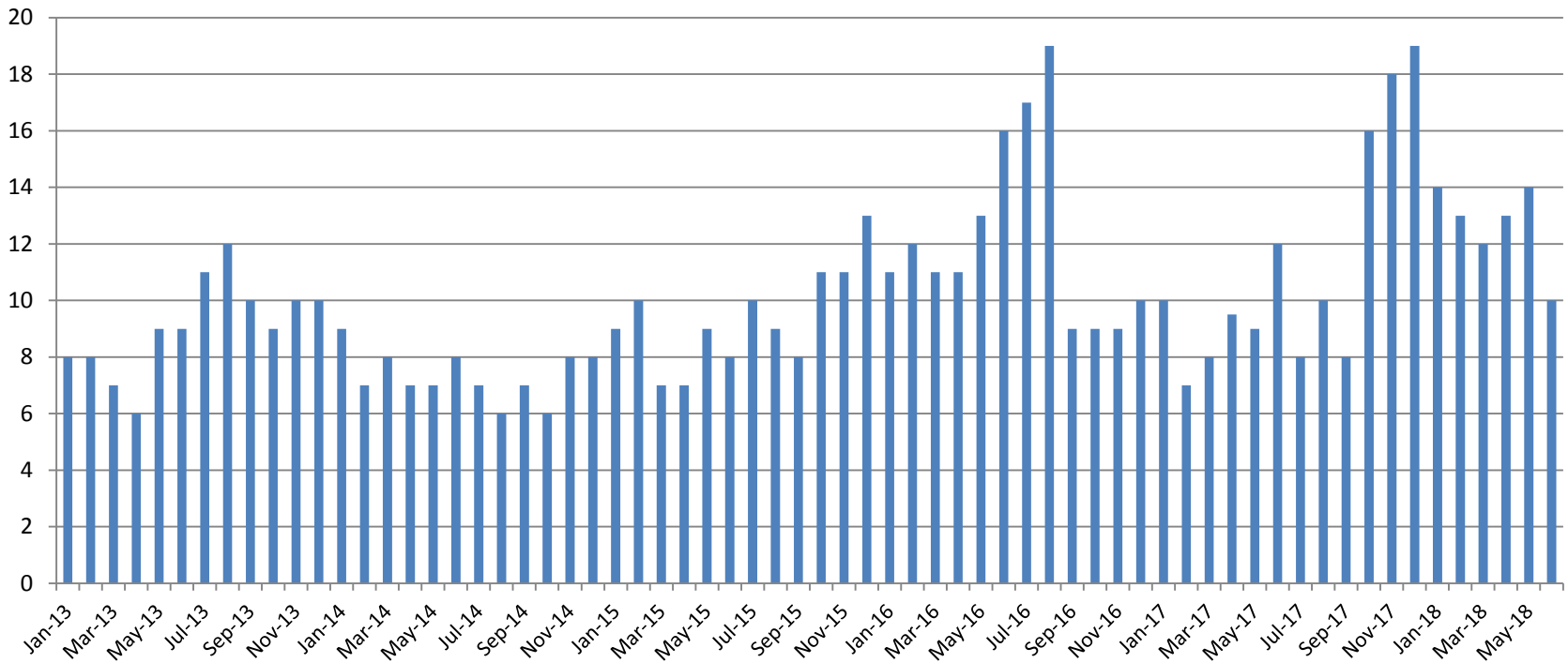
BICE Hold	2013	2014	2015	2016	2017	2018
<b>September</b>	5	8	6	4	22	18

Felony Commitments	2013	2014	2015	2016	2017	2018
<b>September</b>	116	116	110	128	145	85

(data obtained from SG CO DIO)

## Journal Entry Completion (Average Days) January 2013-Present



<b>August</b>	<b>2013</b>	<b>2014</b>	<b>2015</b>	<b>2016</b>	<b>2017</b>	<b>2018</b>
Avg. Days	12	6	9	19	10	10
YTD Avg.	9	7	9	14	9	12

(data obtained from District Court) This data is always reported a month behind

