

Criminal Justice Coordinating Council

Population Report & Program Trends

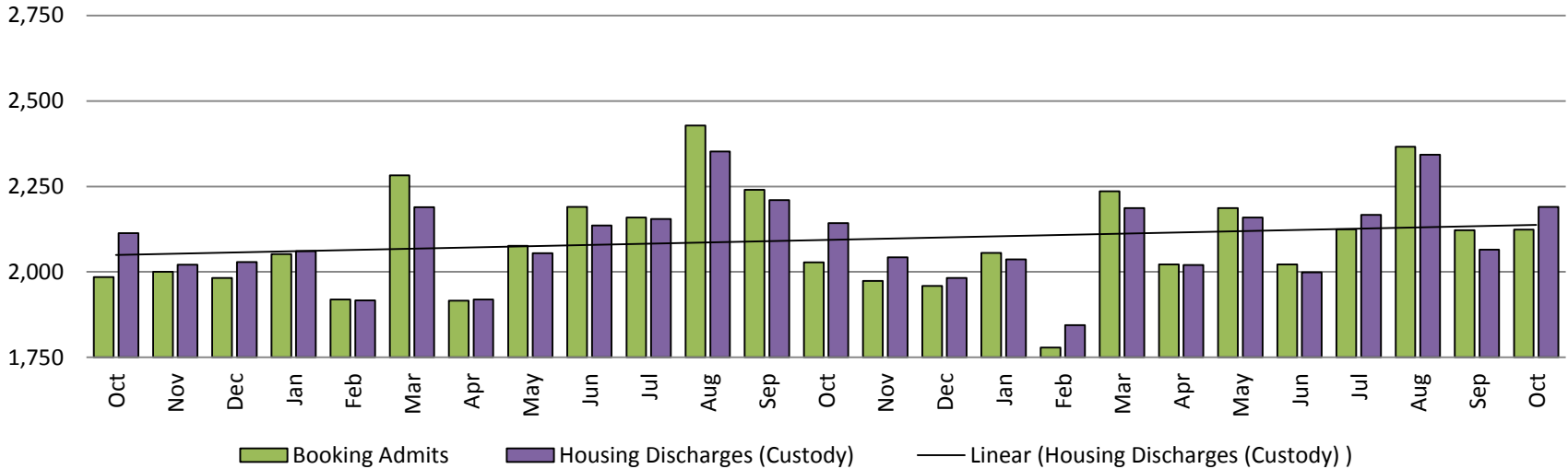
November 2018



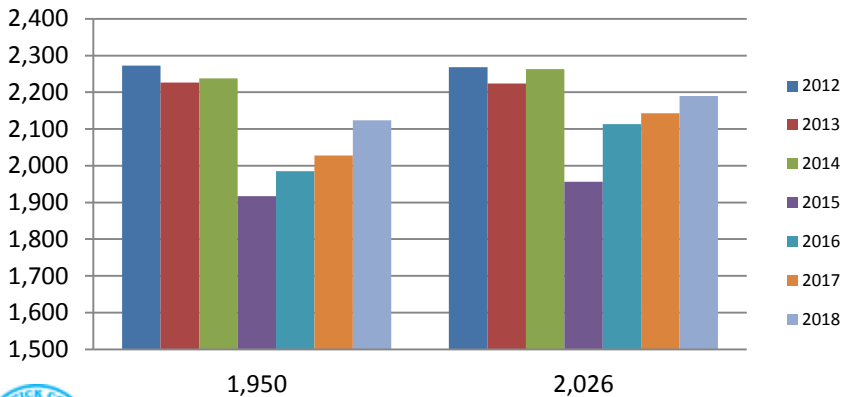
Sedgwick County...
working for you

Detention Facility

Booking Admits & Housing Discharges from Custody October 2016-Present



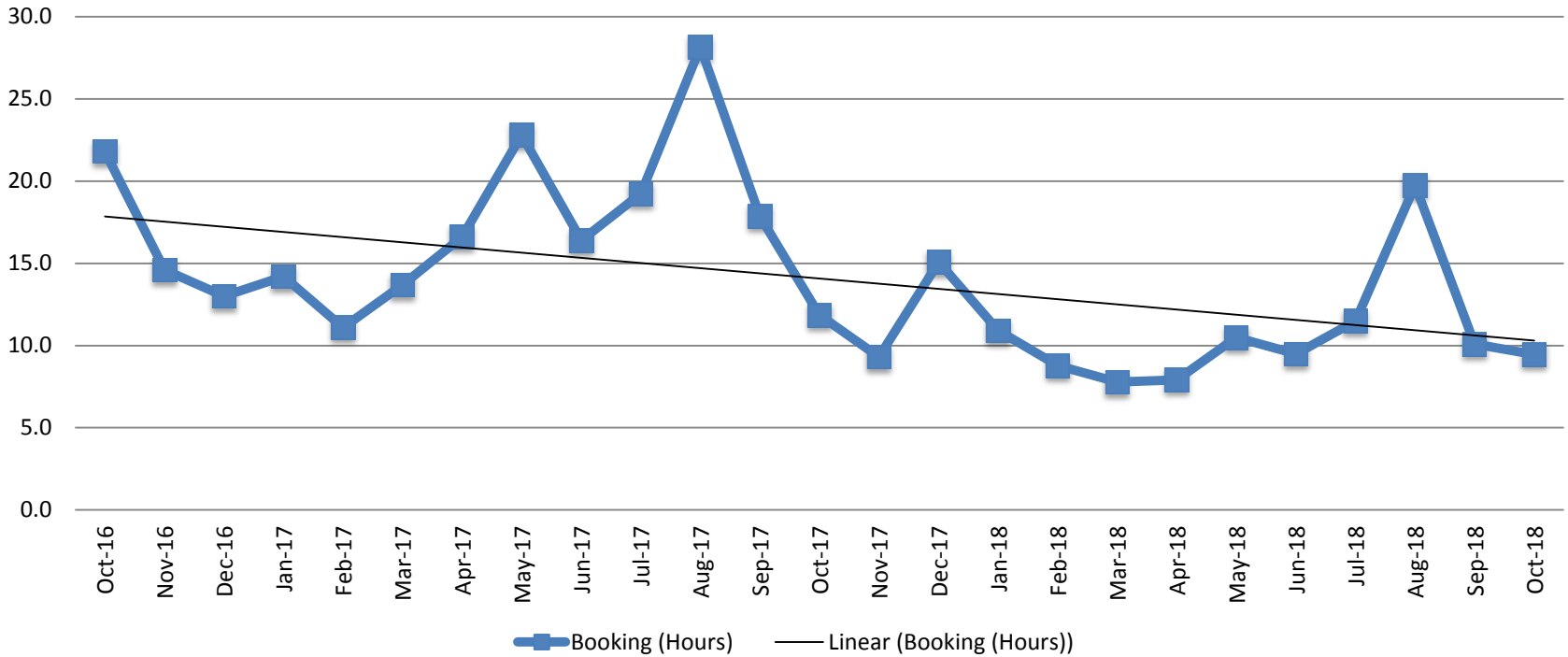
Bookings Year over Year: Month of October



Bookings October	Housing Discharges October
2016: 1,985	2016: 2,113
2017: 2,028	2017: 2,143
2018: 2,124	2018: 2,190

(data obtained from detention facility)

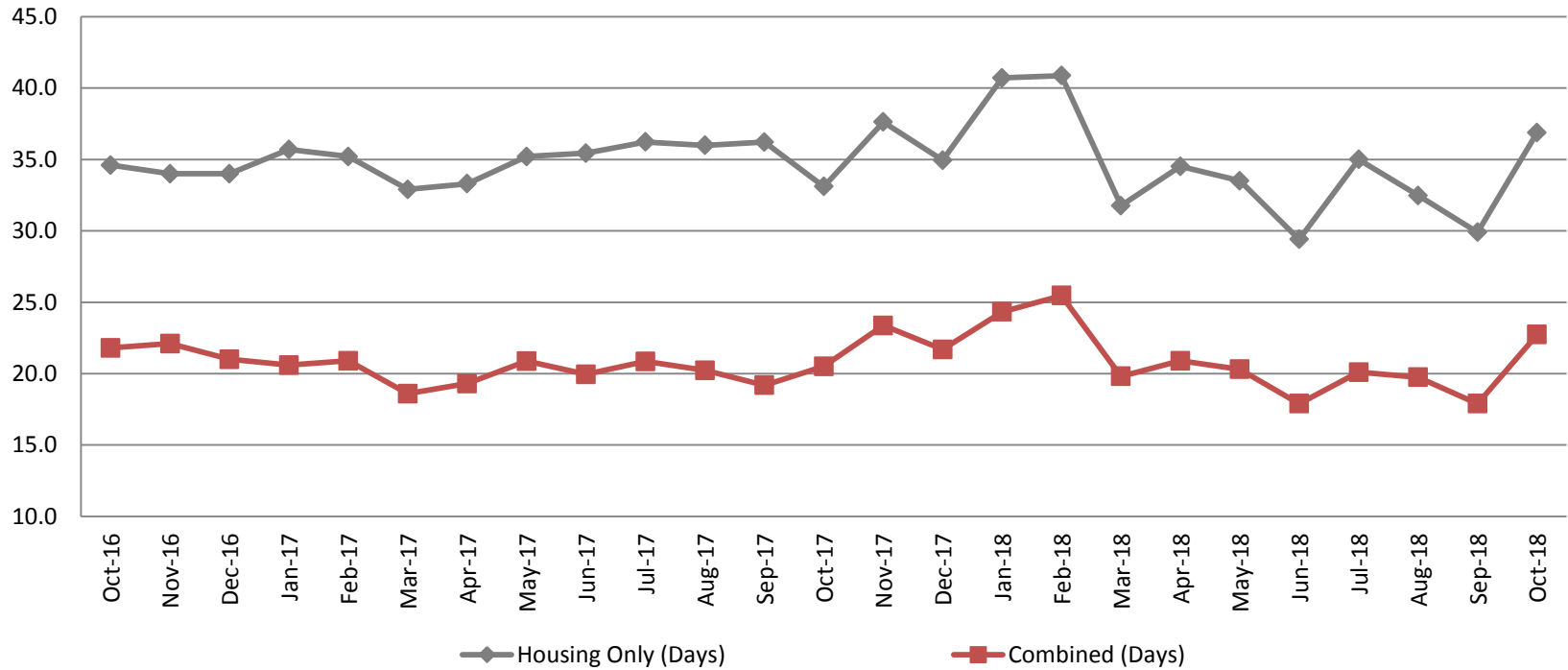
Average Length of Stay: Booking (Hours) October 2016 - Present



October		October YTD Average	
2016:	21.8	2016:	19.1
2017:	11.9	2017:	17.2
2018:	9.5	2018:	10.6



Average Length of Stay: Housing & Combined (Days) October 2016 - Present

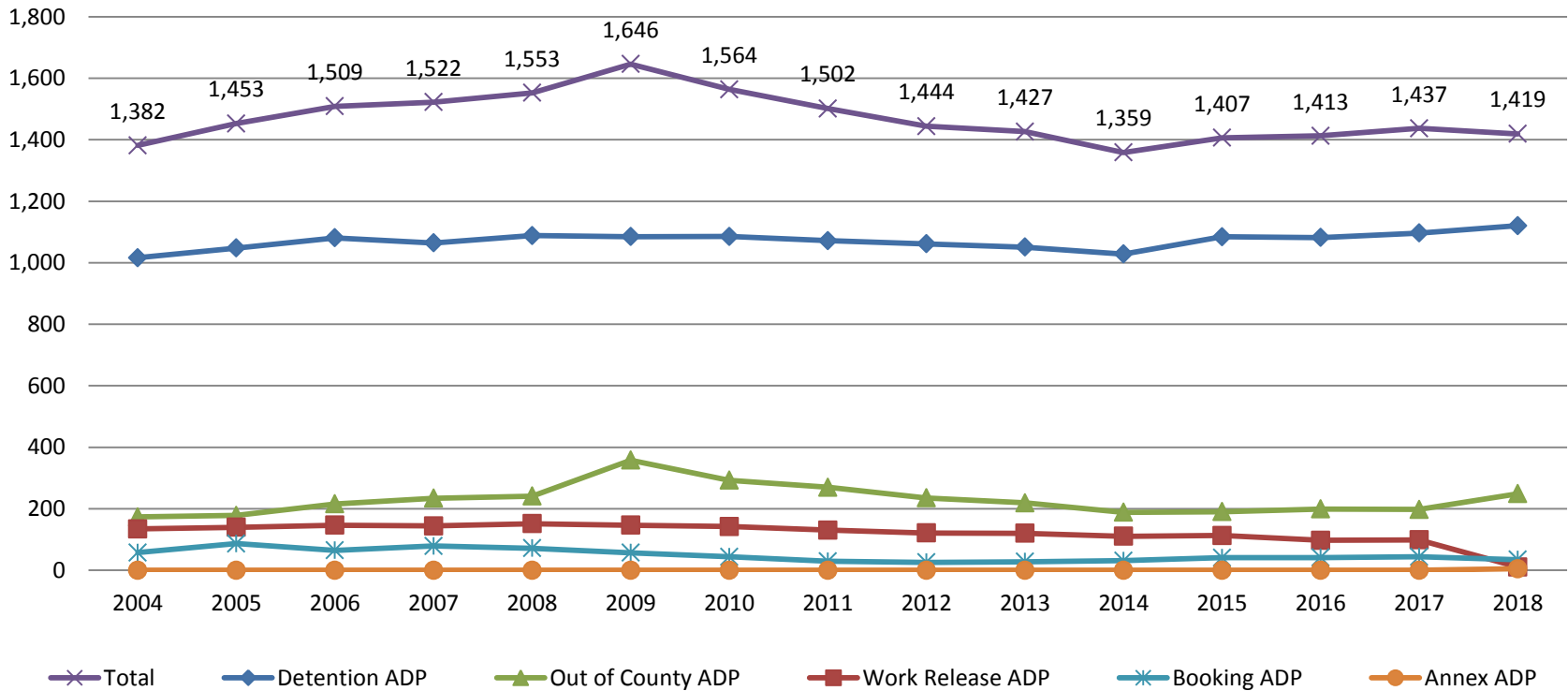


Month Year	Housing Only	Housing YTD AVG	Combined Days	Combined YTD AVG
October 2016	32.4	35.0	21.2	19.4
October 2017	36.2	35.1	19.2	20.1
October 2018	29.9	34.2	17.9	20.7

(data obtained from detention facility)

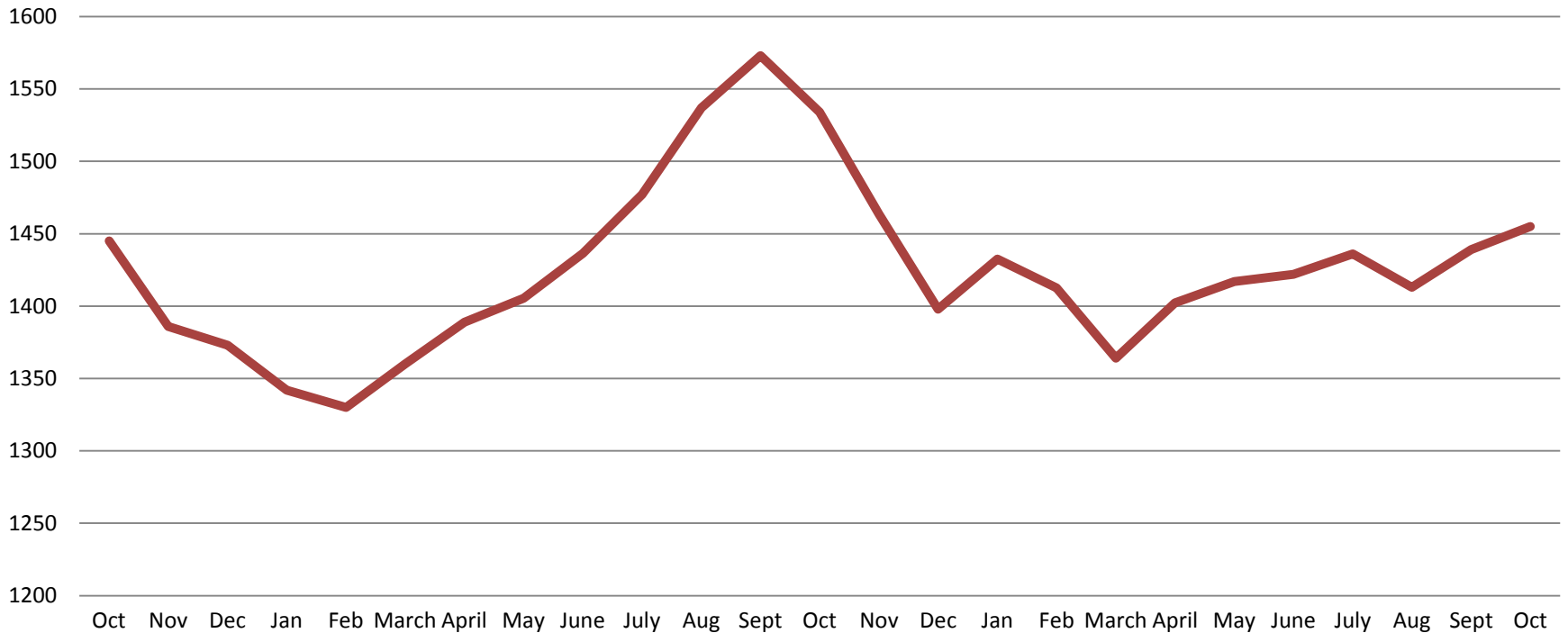
Jail: Annual Average Daily Population (ADP)

**TRENDS: Booking, Detention, Work Release, & Out of County Annual ADP:
2004 - present**



*Beginning January 2018, Work Release program began transfer to Division of Corrections

TOTAL MONTHLY ADP: JAIL (Booking, Detention Facility, Work Release, & Out of County) October 2016 - present

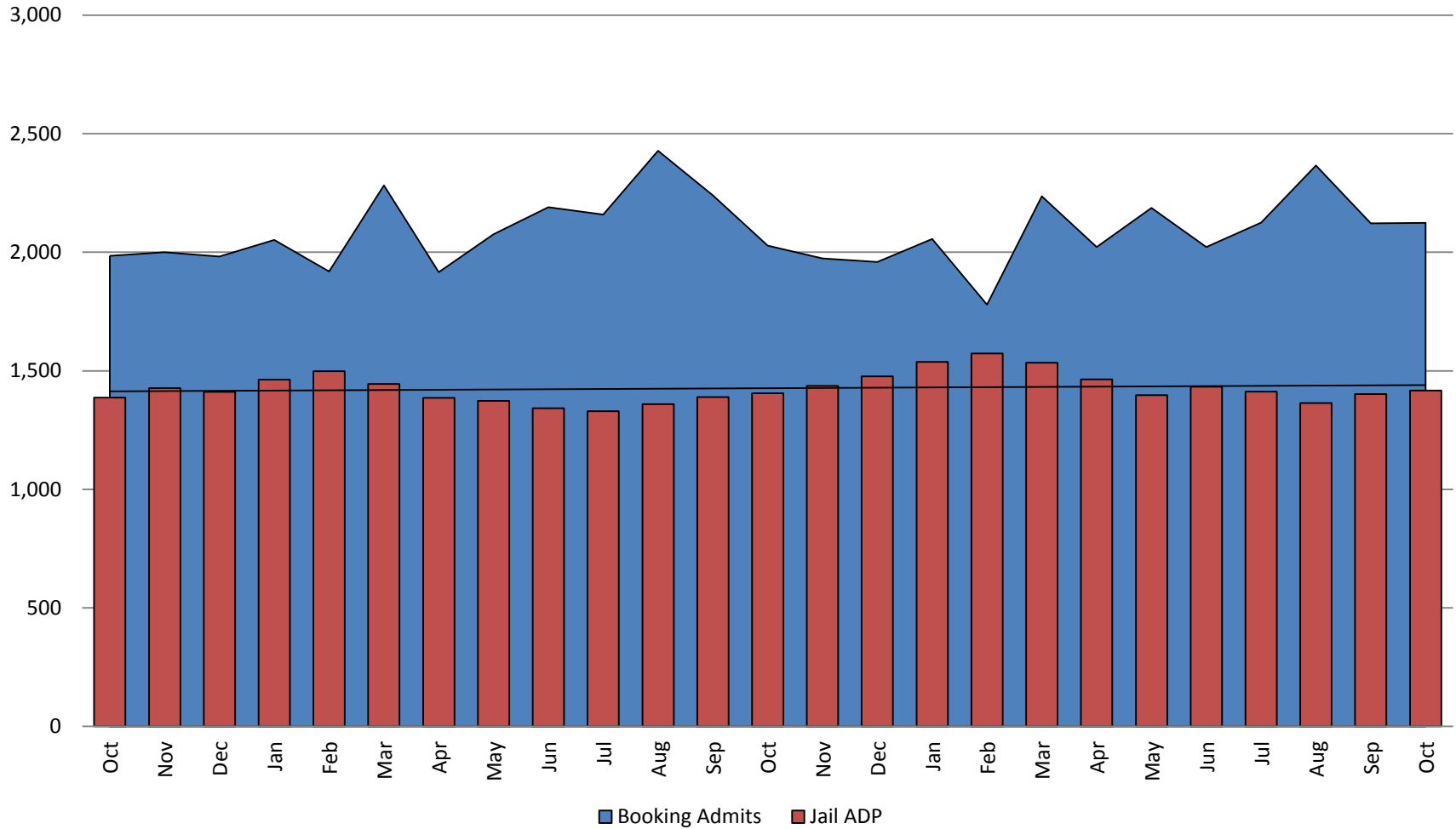


October 2016	October 2017	October 2018
1,445	1,534	1,455

*Beginning January 2018, Work Release program began transfer to Division of Corrections

This slide shows total monthly ADP for individuals in booking, detention, work release, jail annex, and out-of county (combined)
(data obtained from detention facility)

Booking Admits & Total Monthly ADP (Jail): October 2016 - present

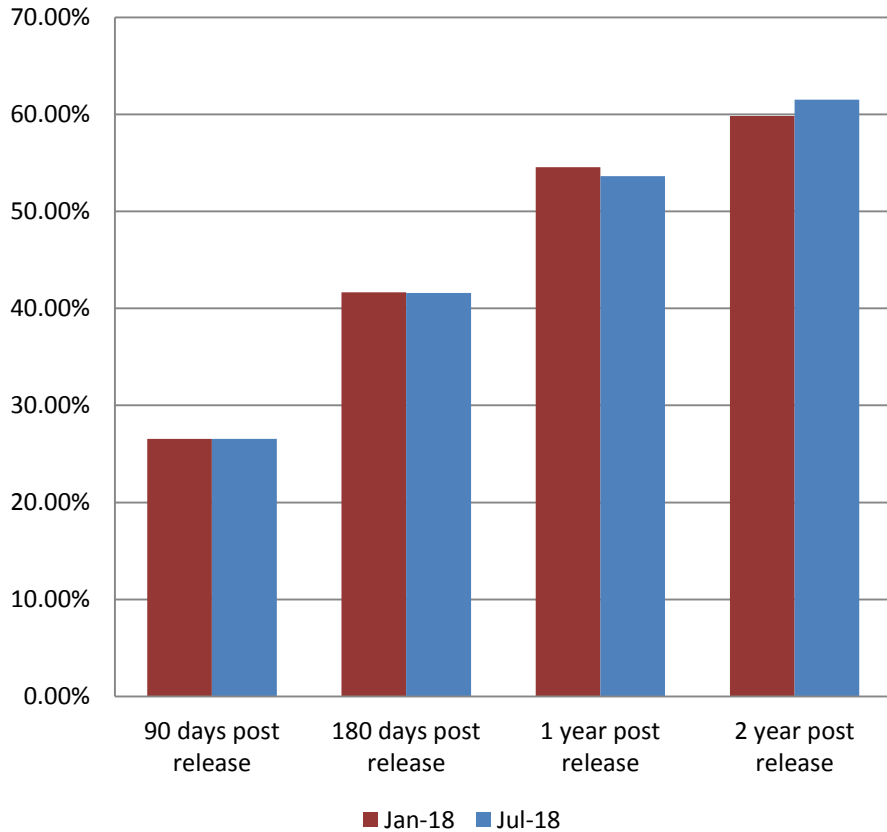


Jail includes individuals in booking, detention, work release and out-of county (combined)

(data obtained from detention facility)



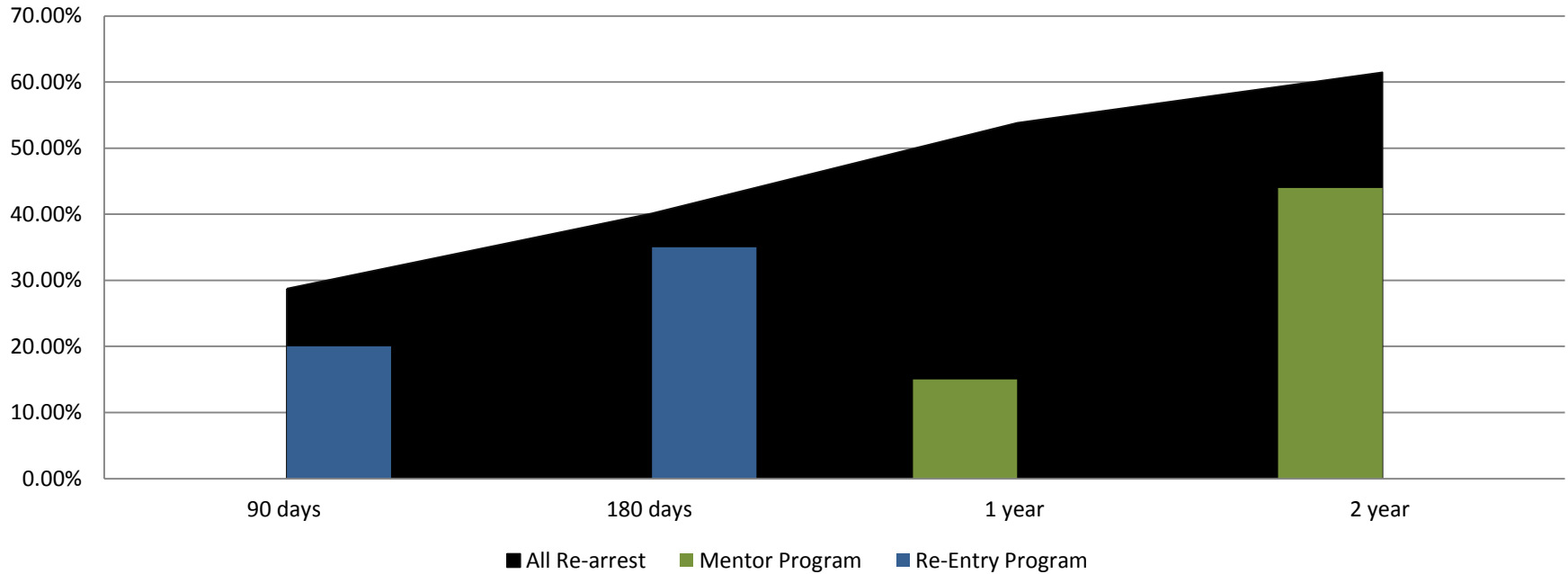
**Percent of released inmates rearrested
January & July comparison**



Month 2018	90 Days	180 Days	1 Year	2 Years
Jan	26.55%	41.67%	54.57%	59.84%
Feb	27.39%	40.22%	54.02%	61.03%
March	28.00%	41.08%	51.69%	60.03%
April	28.13%	39.41%	52.82%	62.93%
May	29.80%	41.88%	52.18%	62.81%
June	27.71%	41.92%	54.94%	62.07%
July	26.55%	41.60%	53.64%	61.50%
August	27.44%	44.09%	52.03%	63.51%
Sept	29.94%	41.51%	56.10%	63.95%
Oct	28.74%	40.13%	53.83%	61.47%

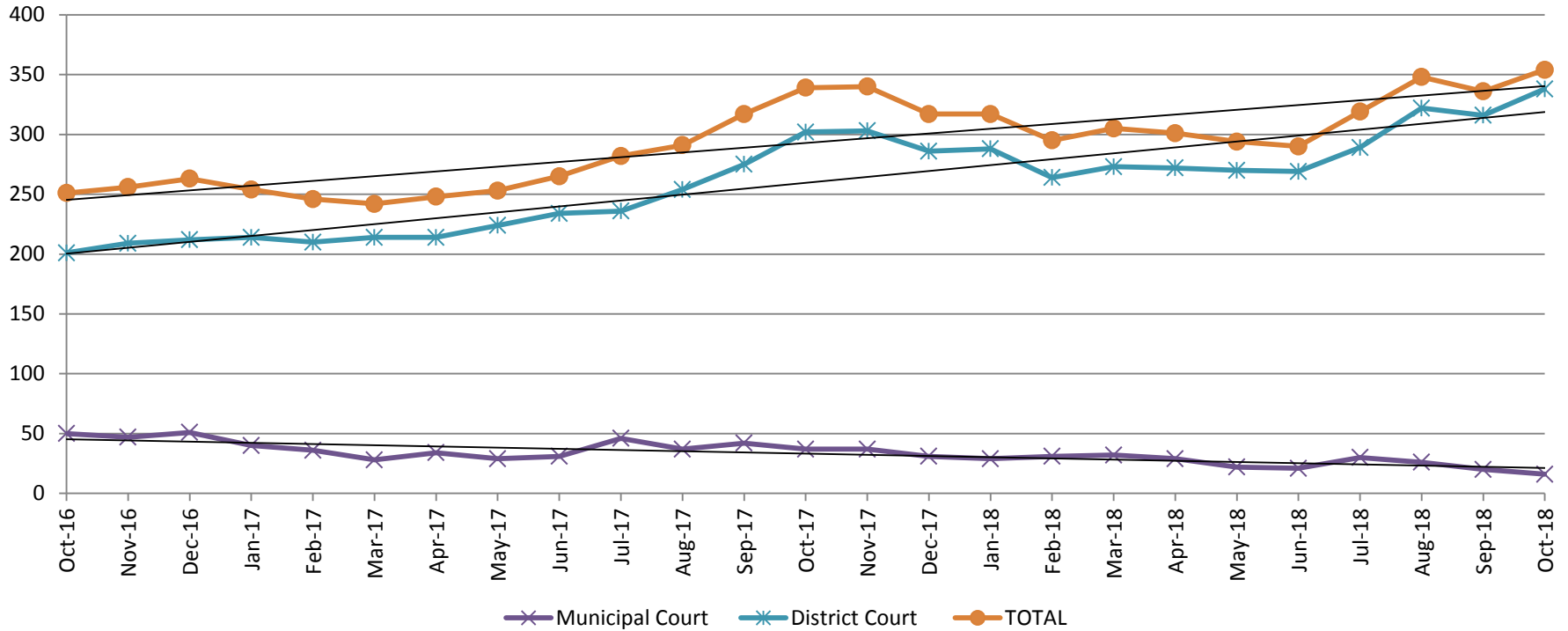
(data obtained from detention facility)

Recidivism by Programs October 2018



October 2018	90 Days	180 Days	1 year	2 years
All Re-arrests	28.74%	40.13%	53.83%	61.47%
Mentor Program	0%	0%	15%	44%
Re-Entry Program	20%	35%	N/A	N/A

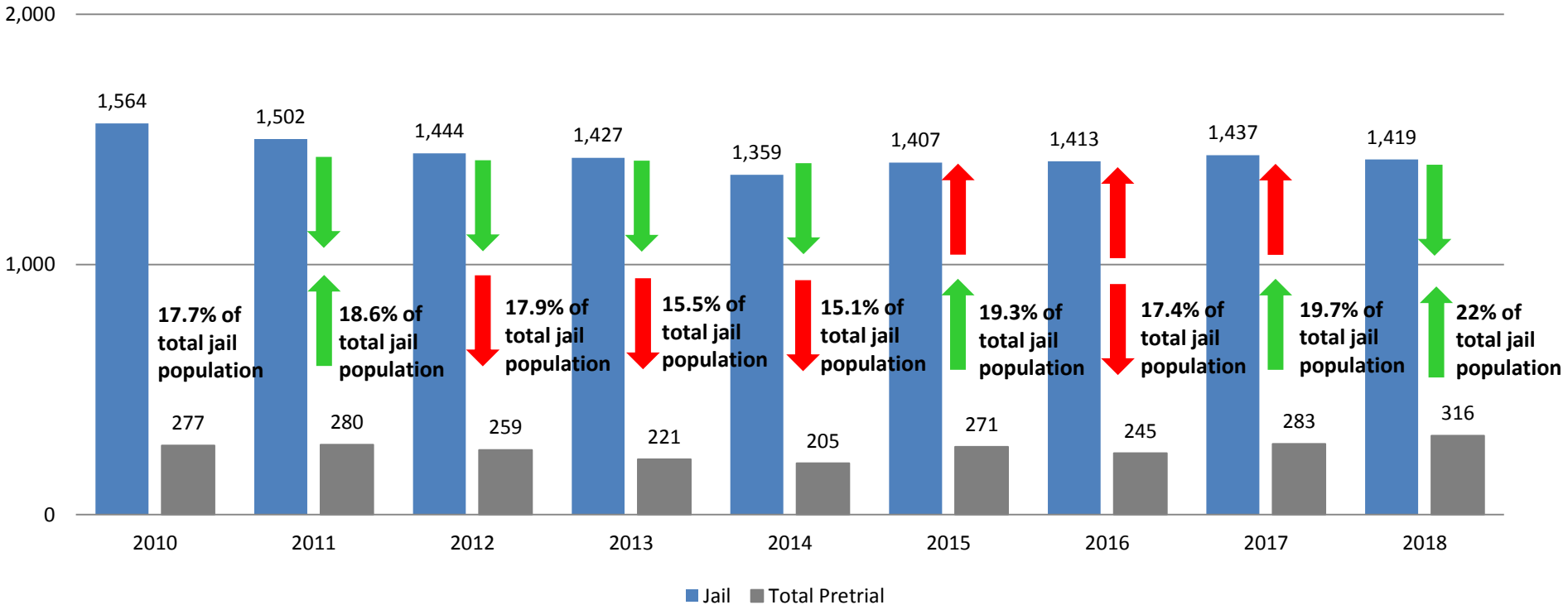
Pretrial Services Program (PSP) Monthly ADP: October 2016 - Present



October	2016 ADP	2017 ADP	2018 ADP	2016 YTD Avg.	2017 YTD Avg.	2018 YTD Avg.
Muni. Court	50	37	16	35	36	26
Dist. Court	201	302	338	207	238	290
Total	251	339	354	243	274	316

Correlation: Total & PSP

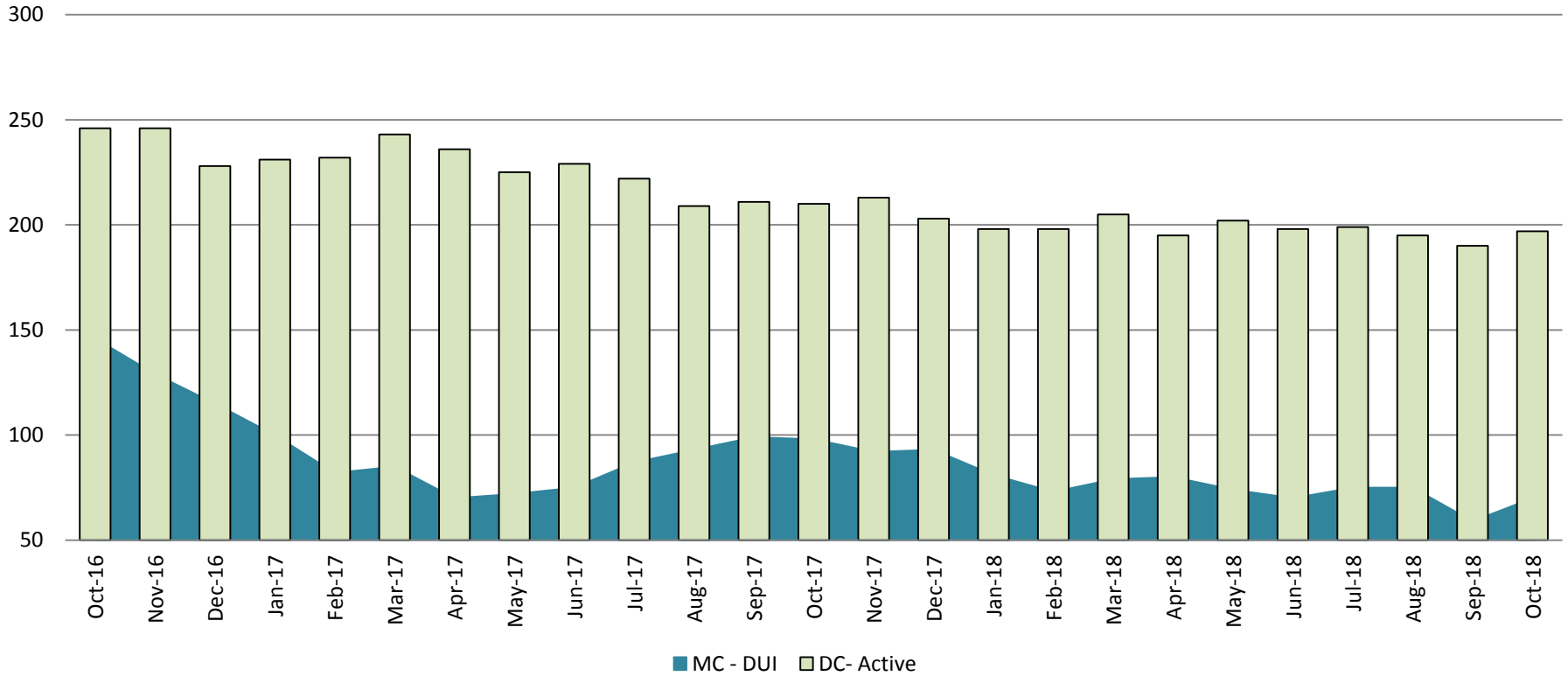
Total Annual ADP: 2010 - Present



Arrows represent the overall increase/decrease of the population from year to year

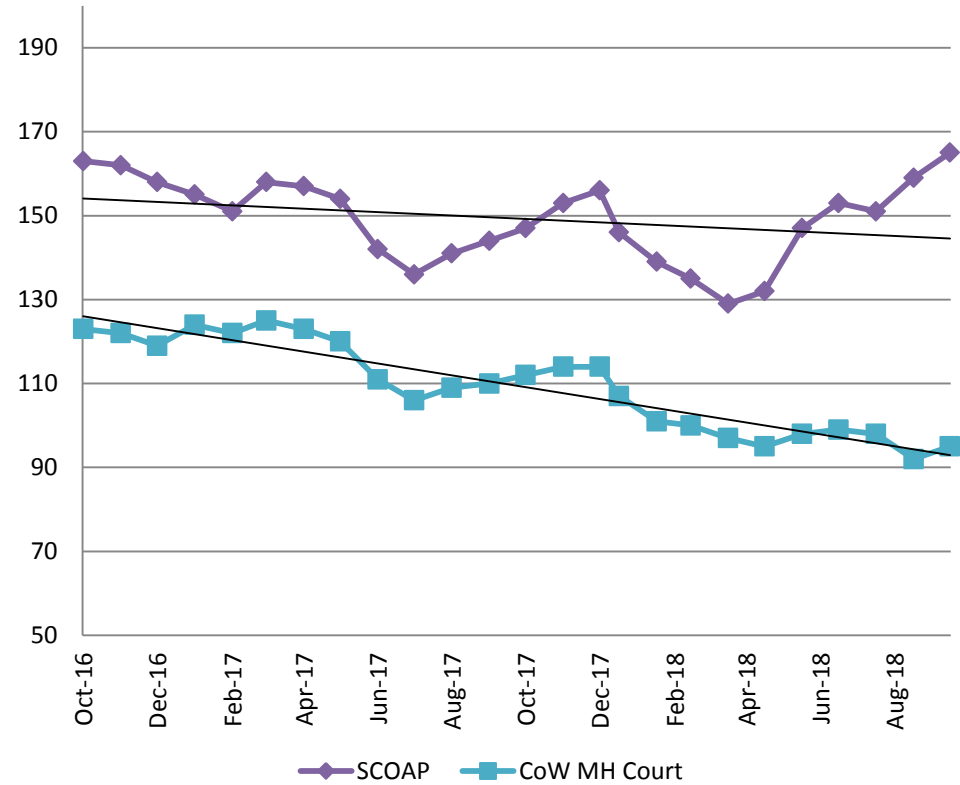
Jail includes individuals in booking, detention, work release and out-of county (combined)

Diversion - Active Caseload October 2016 - Present

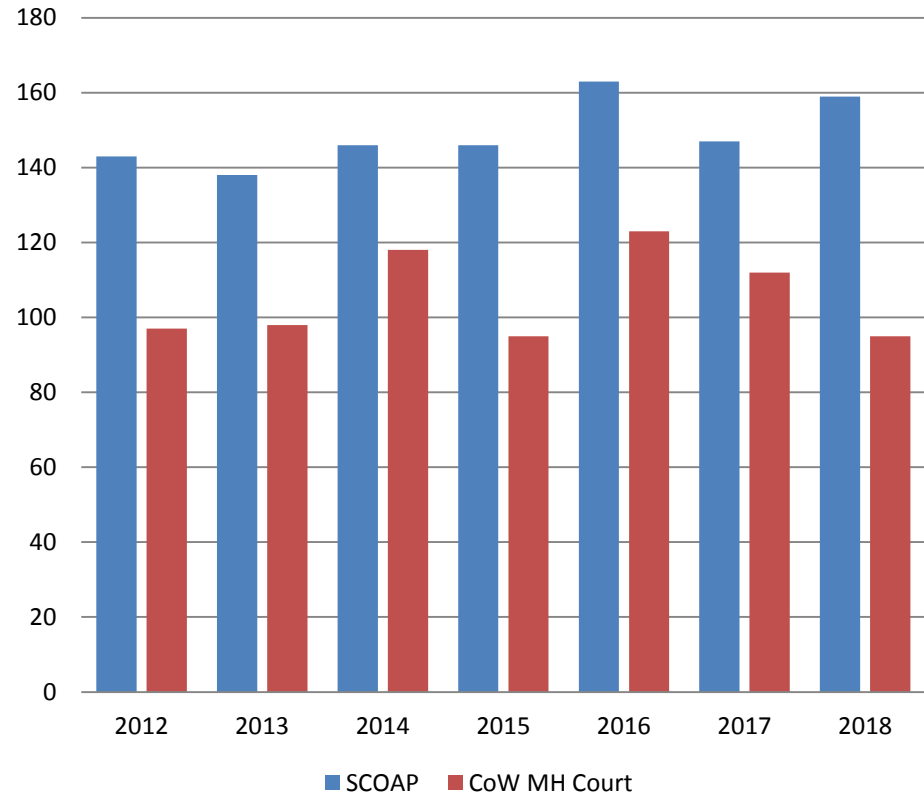


October	2016	2017	2018	2016 YTD Avg.	2017 YTD Avg.	2018 YTD Avg.
Muni. Court- DUI	146	98	70	151	86	74
Dist. Court- Active	246	210	197	236	225	198

Mental Health - ADP October 2016 - present

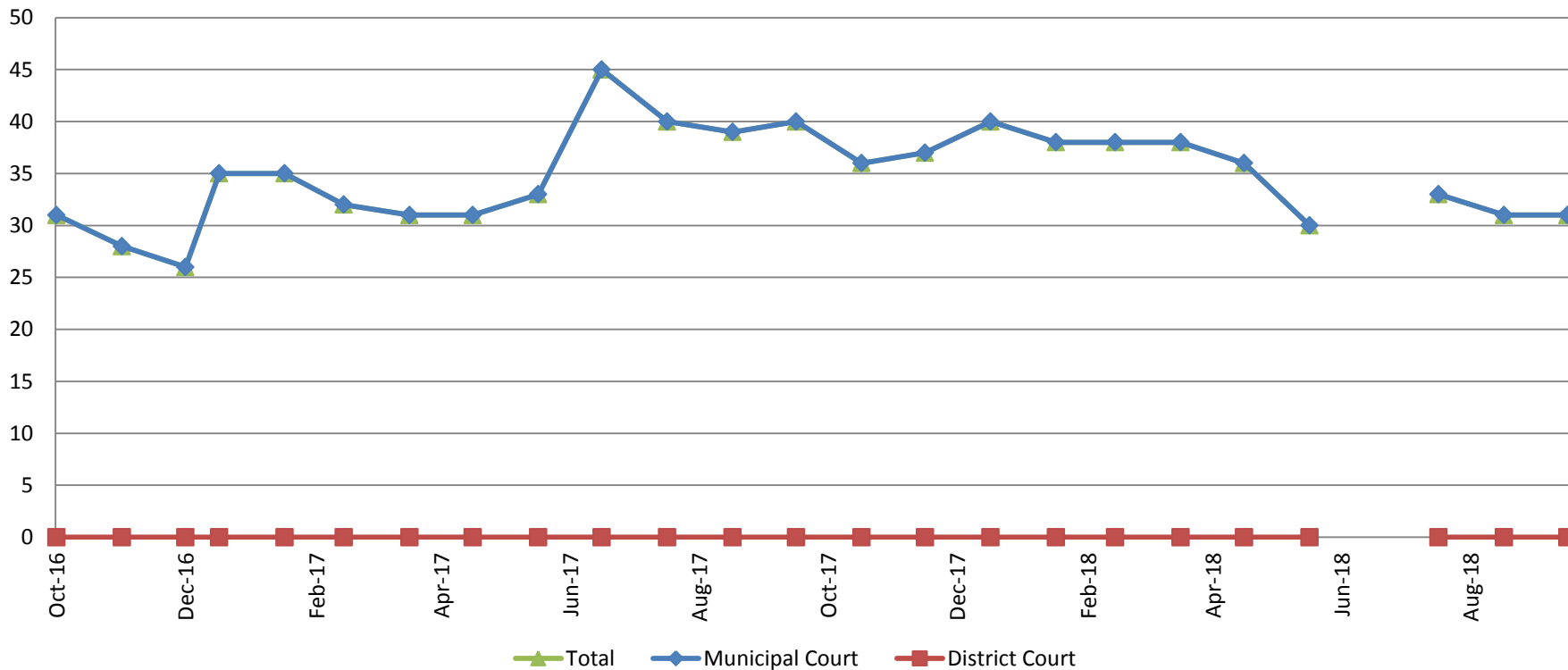


Mental Health ADP Year over Year- October



October	2016 ADP	2017 ADP	2018 ADP	2016 YTD Avg.	2017 YTD Avg.	2018 YTD Avg.
SCOAP	163	147	165	159	149	146
MH Court	123	112	95	106	116	98

Day Reporting - Active Caseload October 2016-present

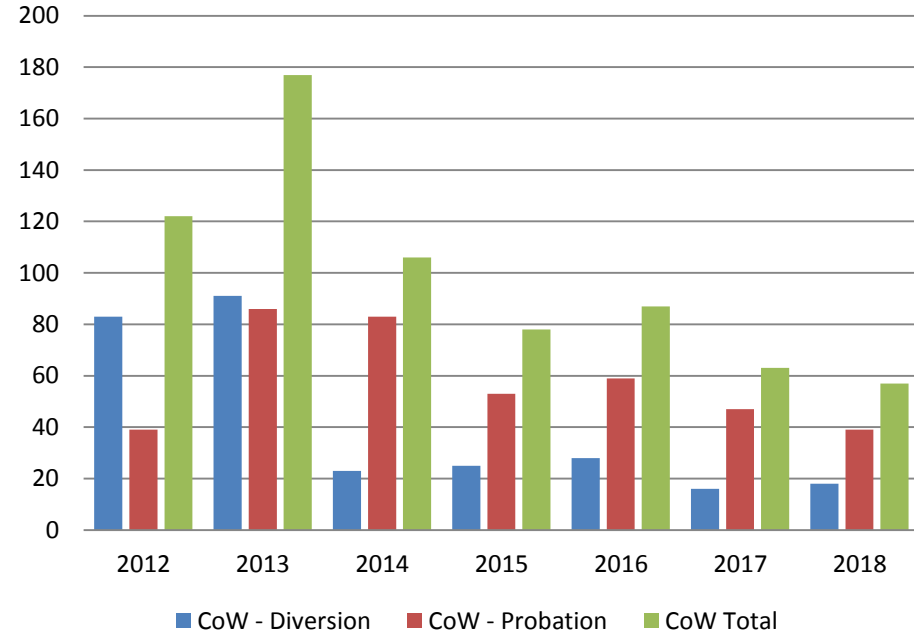
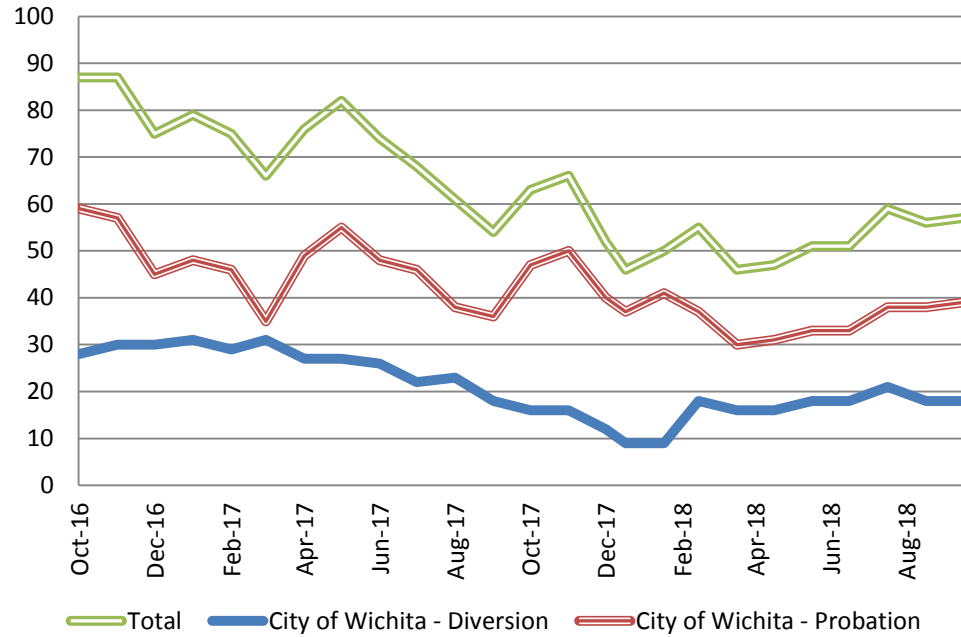


October	2013	2014	2015	2016	2017	2018
Muni. Court	73	57	60	31	40	31
Muni. Court YTD Avg.	78	69	70	41	36	35



Drug Court - City of Wichita ADP: October 2016- present

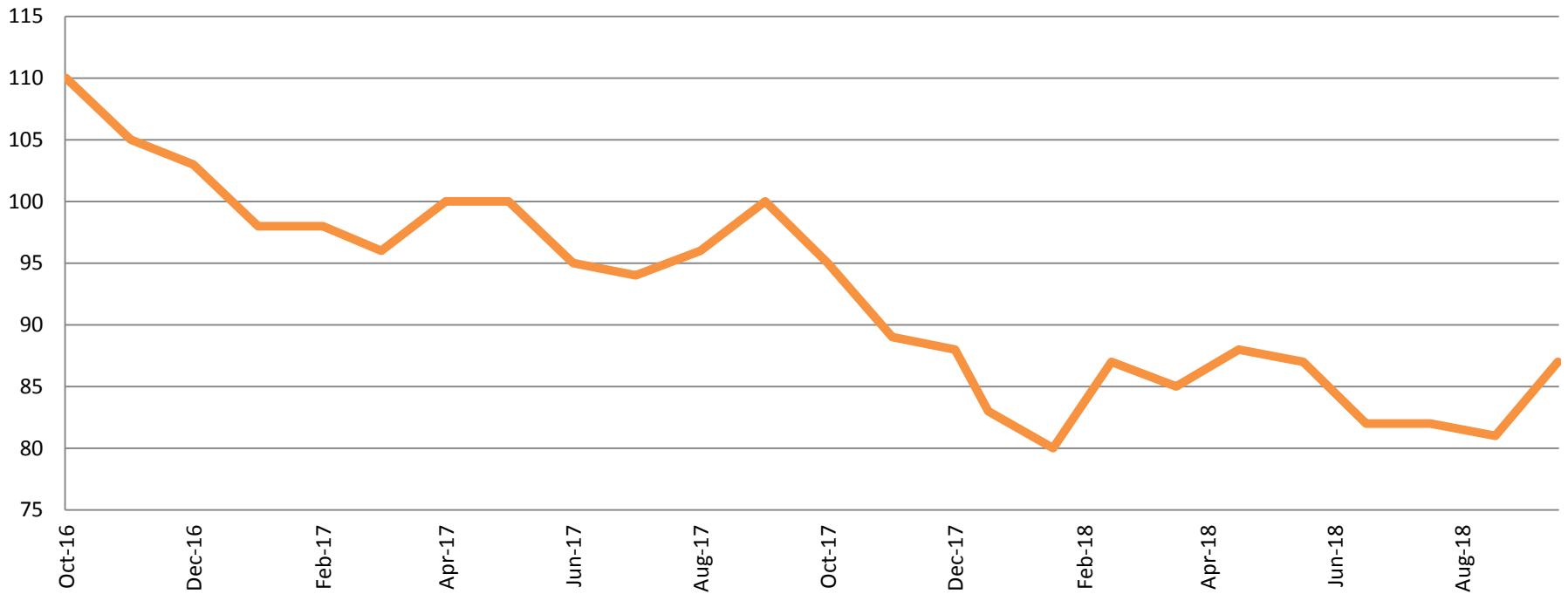
Drug Court- City of Wichita Year over Year- October



October	2016	2017	2018
Diversion	28	16	18
Probation	59	47	39
Total	847	63	57

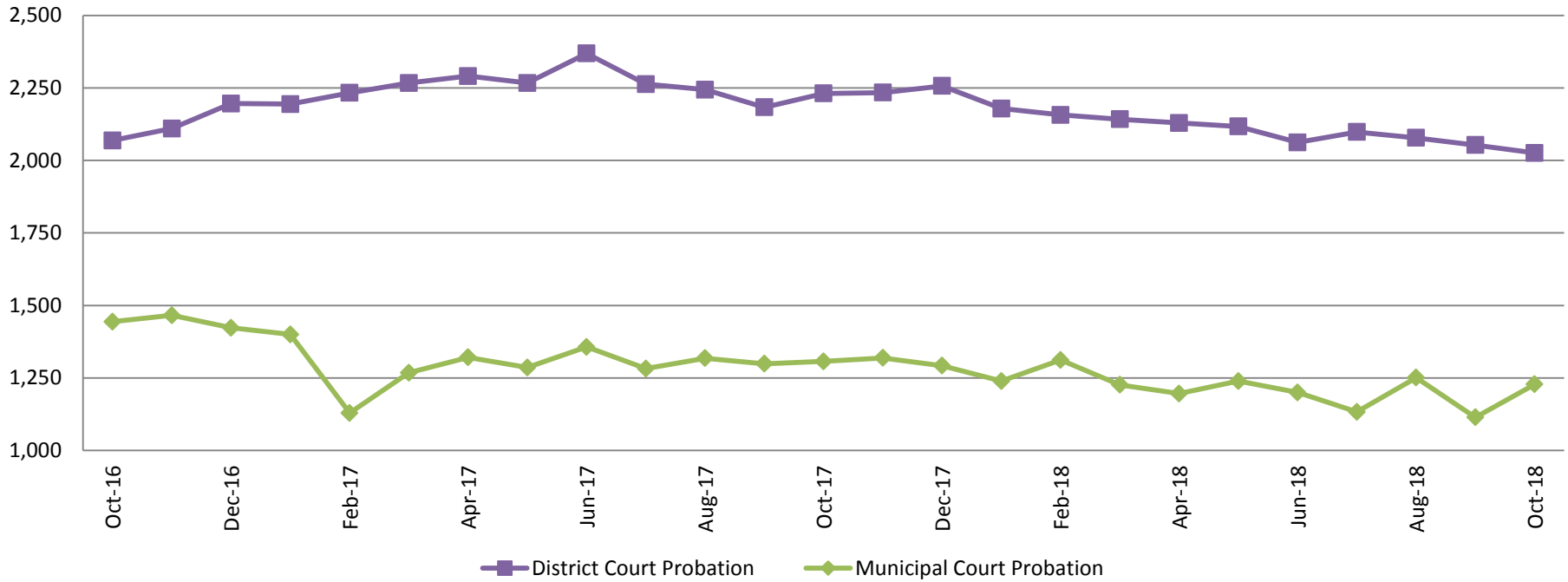


Drug Court - Sedgwick County ADP: October 2016 - present



October	2016	2017	2018
Sedg. Co. ADP	110	95	87
YTD Avg.	110	97	84

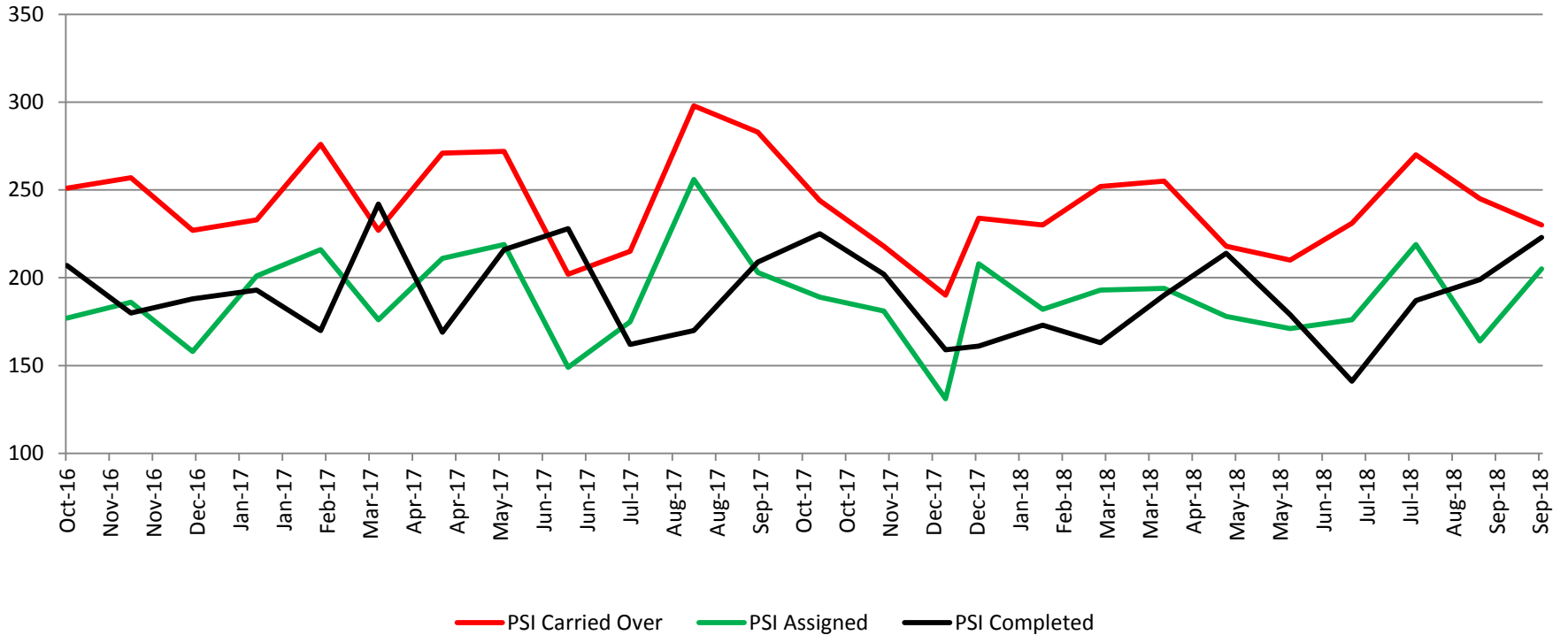
Probation - Active Caseloads October 2016 - present



October	2016	2017	2018	2016 YTD Avg.	2017 YTD Avg.	2018 YTD Avg.
Dist. Court Probation	2,069	2,231	2,026	2,165	2,254	2,104
Muni. Court Probation	1,444	1,307	1,228	1,505	1,297	1,214



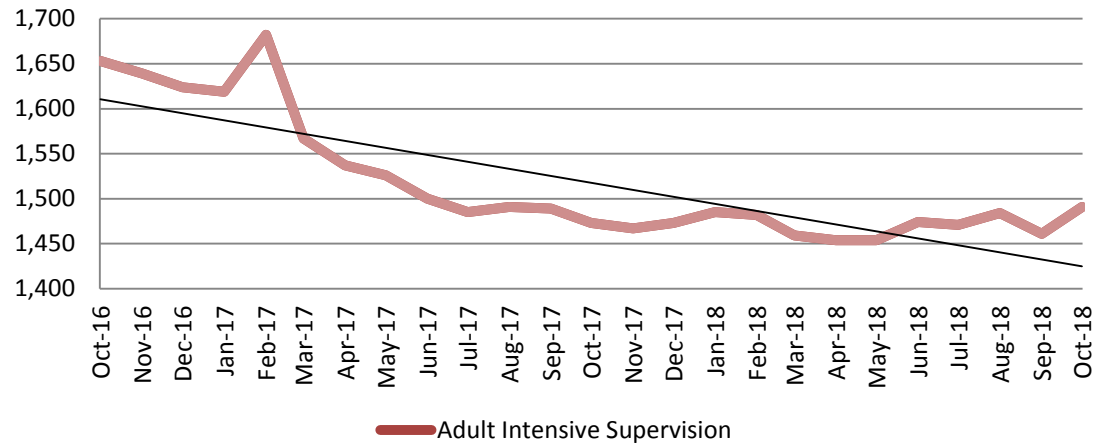
District Court Probation: Pre-Sentence Investigation October 2016 - present



October	2016	2017	2018
Carried Over	251	244	230
Assigned	177	189	205
Completed	207	225	223

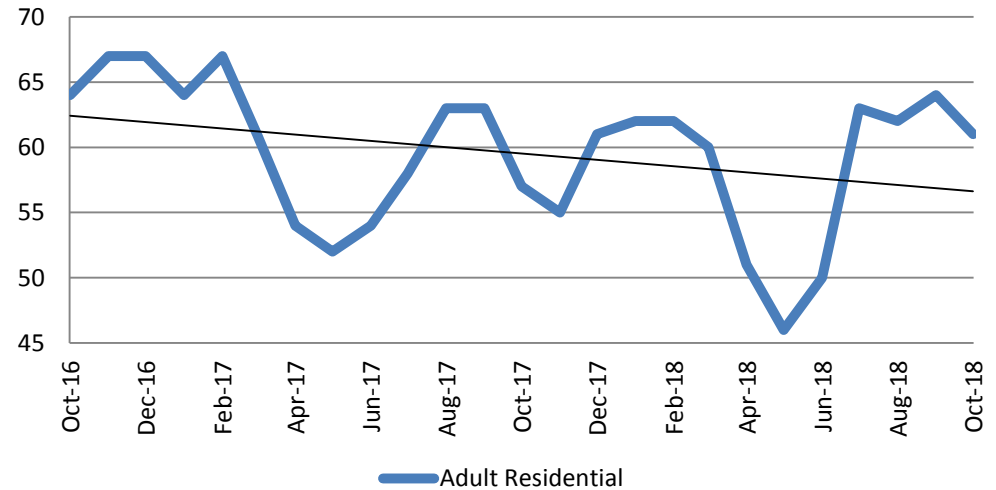
Community Corrections

**Adult Intensive Supervision Probation (AISP):
ADP October 2016 - present**



Year	October	October YTD Avg.
2016	1,653	1,628
2017	1,473	1,537
2018	1,491	1,472

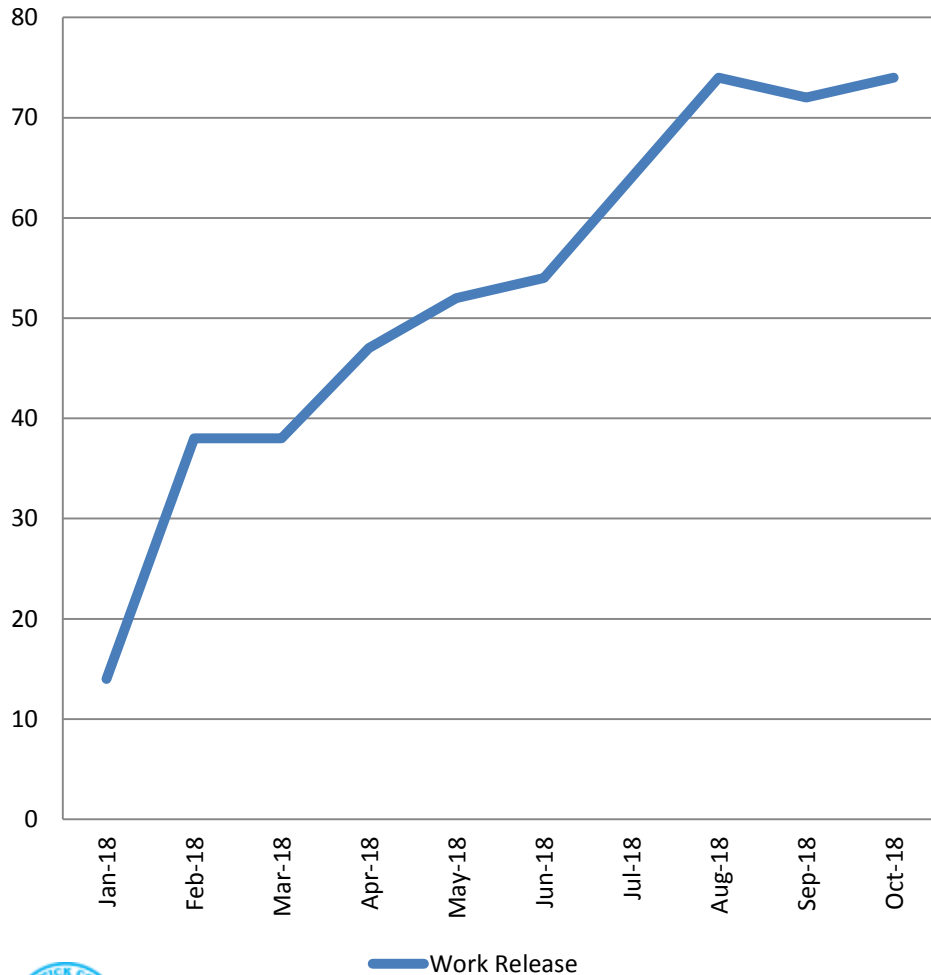
**Adult Residential: ADP
October 2016- present**



Year	October	October YTD Avg.
2016	64	63
2017	57	59
2018	61	58

Community Corrections

**Work Release: ADP
Jan 2018- present**



Month	Total	YTD Avg.
January	14	14
February	38	26
March	38	30
April	47	34
May	52	38
June	54	41
July	64	44
August	74	48
September	72	50
October	74	53

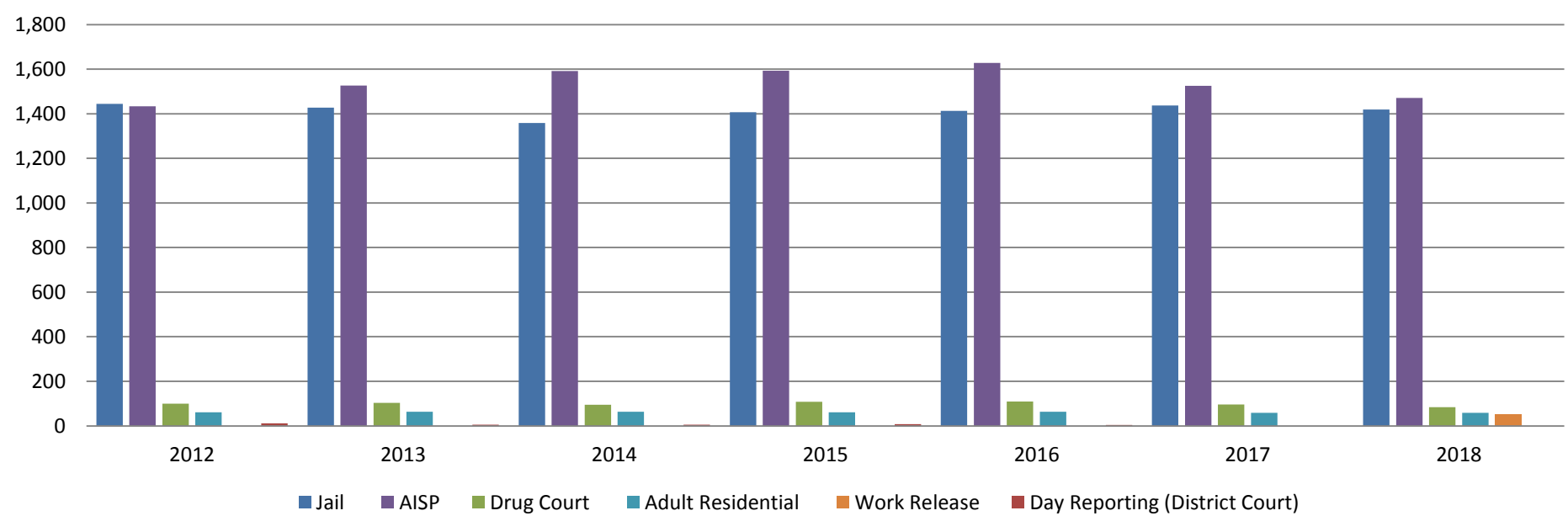


*Sedgwick County...
working for you*

(data obtained from SG CO Division of Corrections)

Correlation: Total & Sedgwick County Programs (Adult)

Total Annual ADP 2012-Present



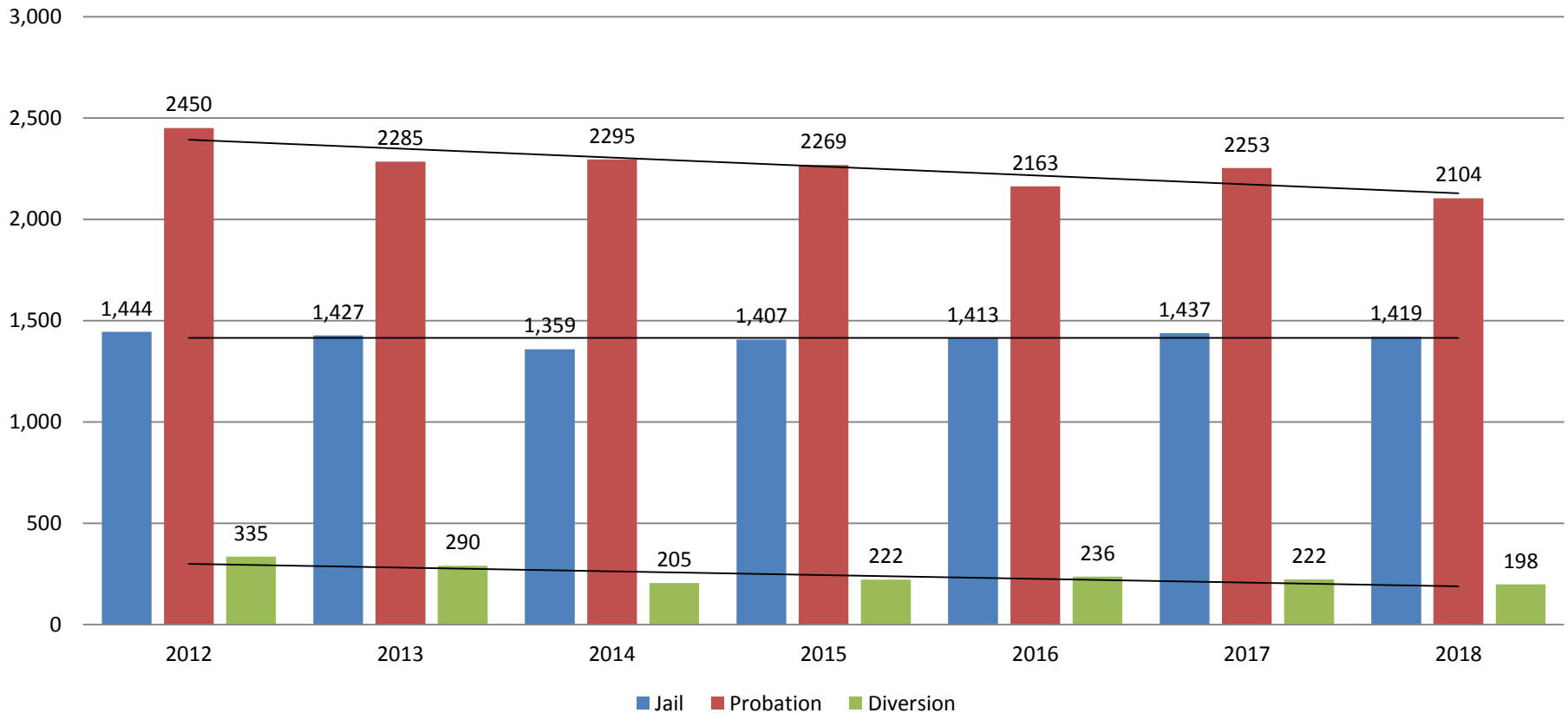
	2016	2017	2018
Jail	1,413	1,437	1,419
AISP	1,629	1,526	1,472
Drug Court	109	96	84
Adult Residential	63	59	58
Work Release	0	0	53
Day Reporting (DC)	4	0	0



Jail includes individuals in booking, detention, work release and out-of county (combined)
 Sedgwick County... working for you (data obtained from detention facility, SG Dept. of Corrections, Pretrial Services, & CoW)

Correlation: Total & District Court Programs

Total Annual ADP: 2012 - Present

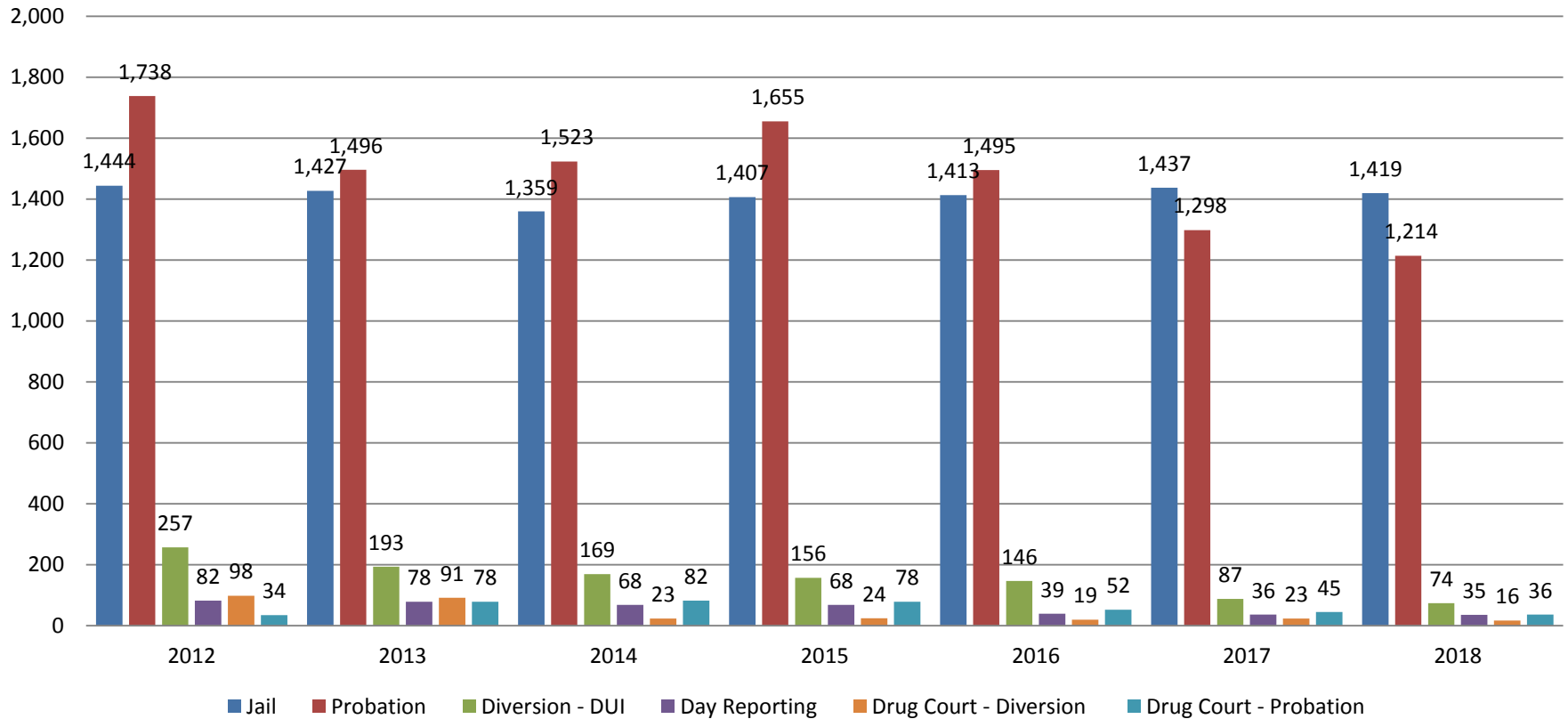


Jail includes individuals in booking, detention, work release and out-of county (combined)



Correlation: Total & City of Wichita / Municipal Court Programs

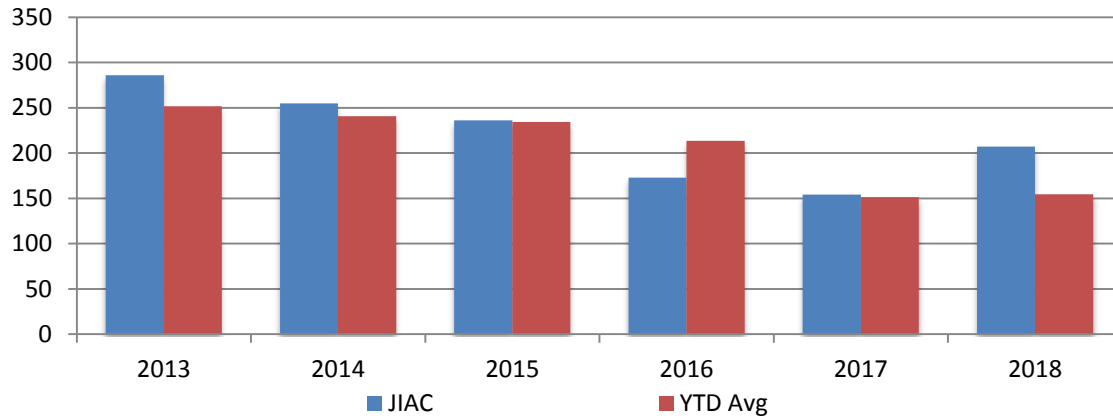
Total Annual ADP: 2012 - present



Jail includes individuals in booking, detention, work release and out-of county (combined)

Juvenile

JIAC Intakes
October 2013 - present

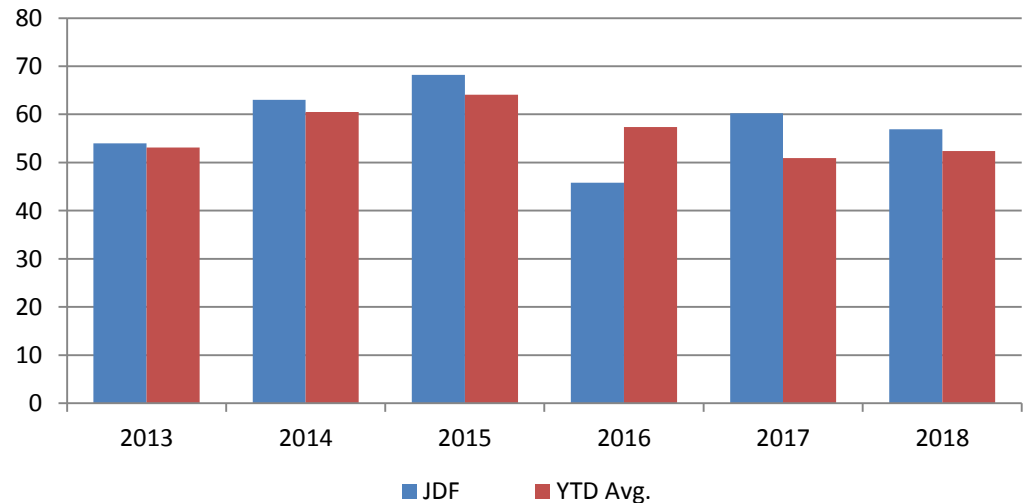


Year	October	October YTD Avg.
2013	286	252
2014	255	241
2015	236	234
2016	173	214
2017	154	151
2018	207	155

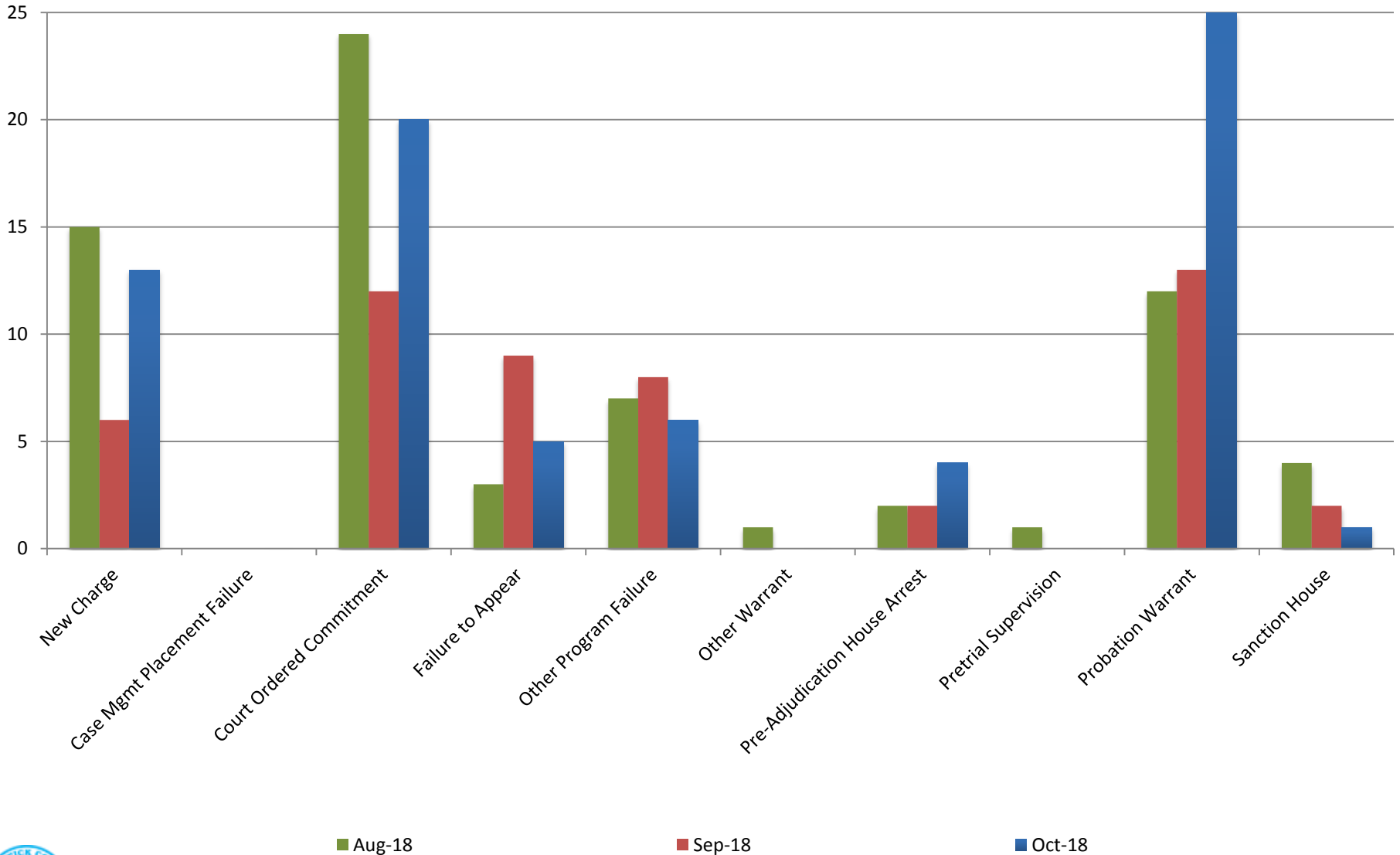
JDF ADP
October 2013 - present

Year	October	October YTD Avg.
2013	54	53
2014	63	61
2015	68	64
2016	46	57
2017	60	51
2018	57	52

JDF ADP
October 2013 - present



Reason for JDF Admits



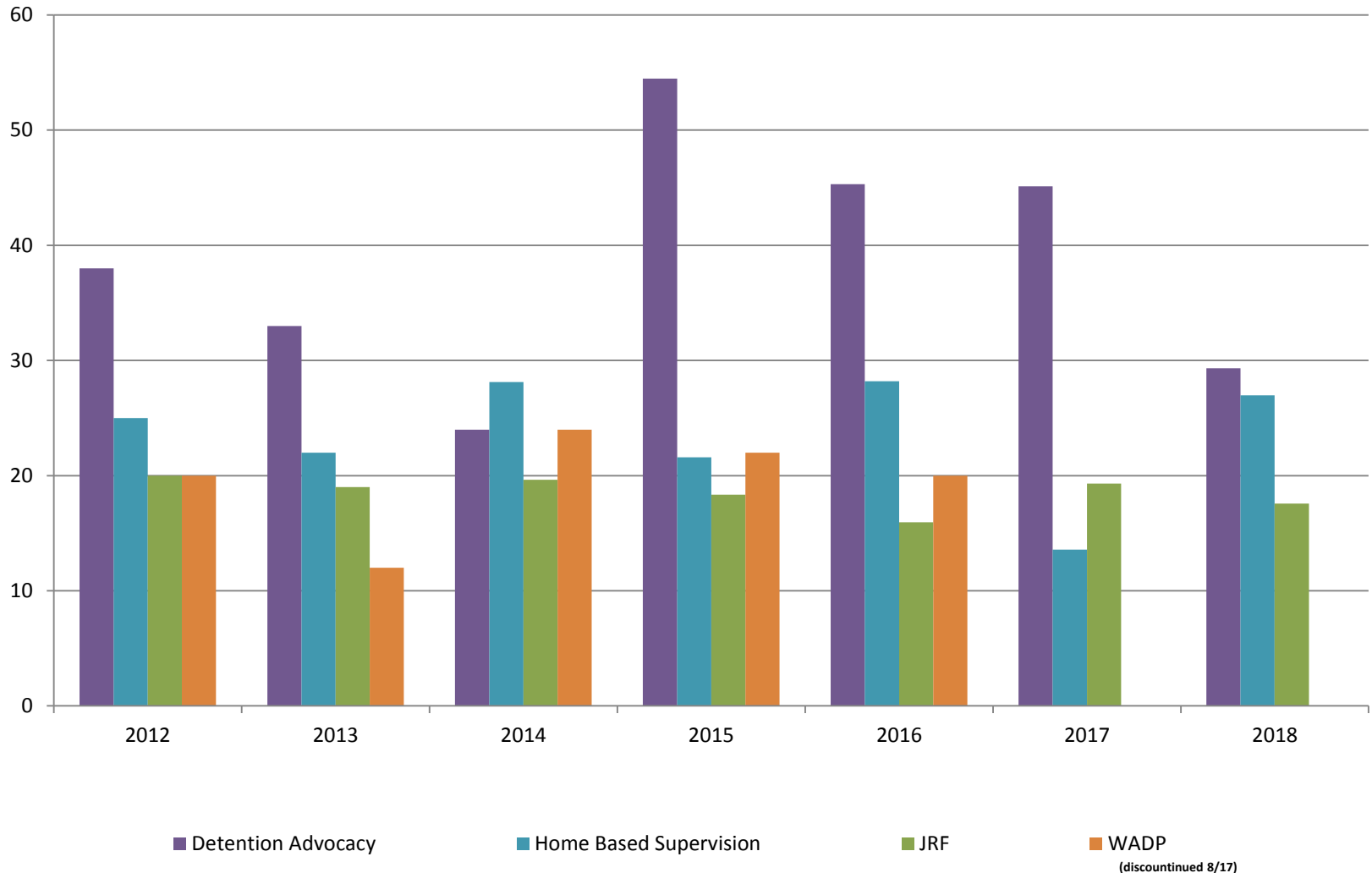
Reason for JDF Admits

Reason	Jan 2018	Feb 2018	March 2018	April 2018	May 2018	June 2018	July 2018	Aug 2018	Sept 2018	Oct 2018
New Charges	11	11	20	11	12	17	9	15	6	13
Case Management Placement Failures	0	0	0	0	1	4	1	0	0	0
Court Ordered Commitment	4	6	10	8	16	9	11	24	12	20
Failure to Appear	5	4	4	9	3	4	6	3	9	5
Other Program Failure	0	2	6	2	2	2	6	7	8	6
Other Warrant	4	6	4	1	1	0	3	1	0	0
Pre-Adjudication House Arrest	2	7	6	3	1	6	4	2	2	4
Pretrial Supervision	1	2	3	0	1	0	1	1	0	0
Probation Warrant	6	4	10	9	10	6	11	12	13	25
Sanction House	7	0	4	3	2	2	2	4	2	1



Juvenile Detention Alternatives

ADP: October 2012 - Present



Juvenile Detention Services

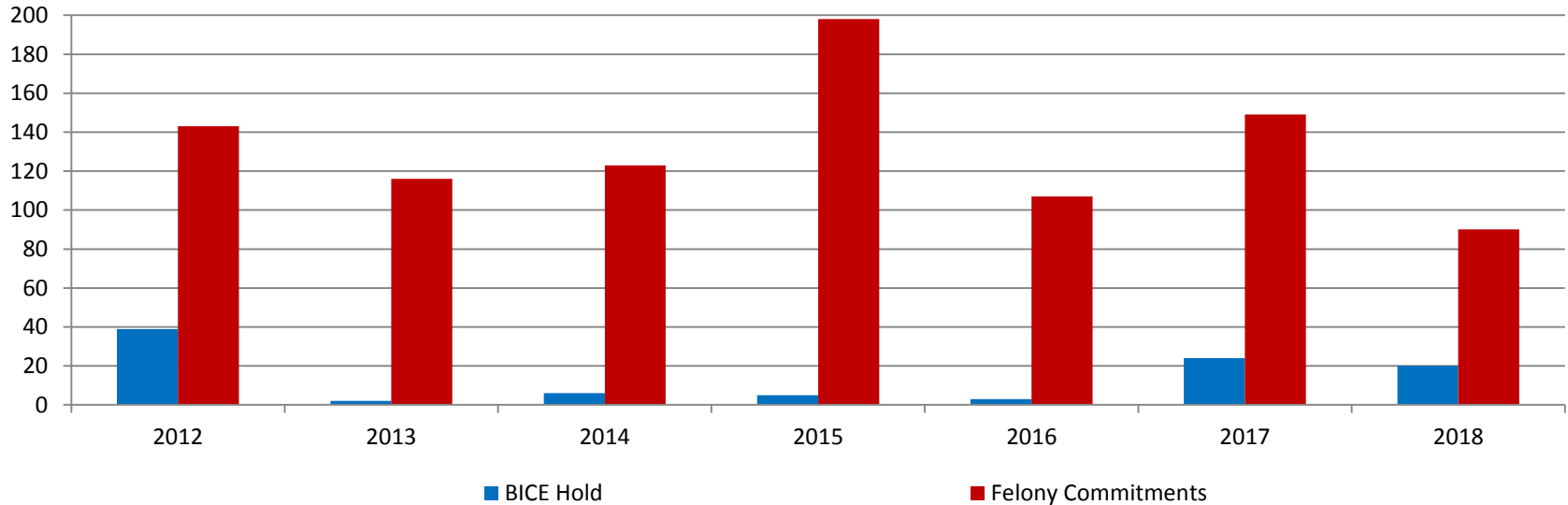
October ADP	2015	2016	2017	2018
Juvenile Detention Facility	68	46	60	57
Juvenile Residential Facility	18	16	19	18
Home Based Supervision	22	28	14	27
Detention Advocacy Case Management Services	54	45	45	29
Weekend Alternative Detention Program (total)	22	20	0	0

October YTD AVERAGE	2015	2016	2017	2018
Juvenile Detention Facility	64	57	51	51
Juvenile Residential Facility	16	16	16	16
Home Based Supervision	22	27	21	21
Detention Advocacy Case Management Services	48	35	38	32
Weekend Alternative Detention Program	19	15	10	0



Monthly Jail Snapshot: October 31, 2018

Snapshots October 2012 - Present

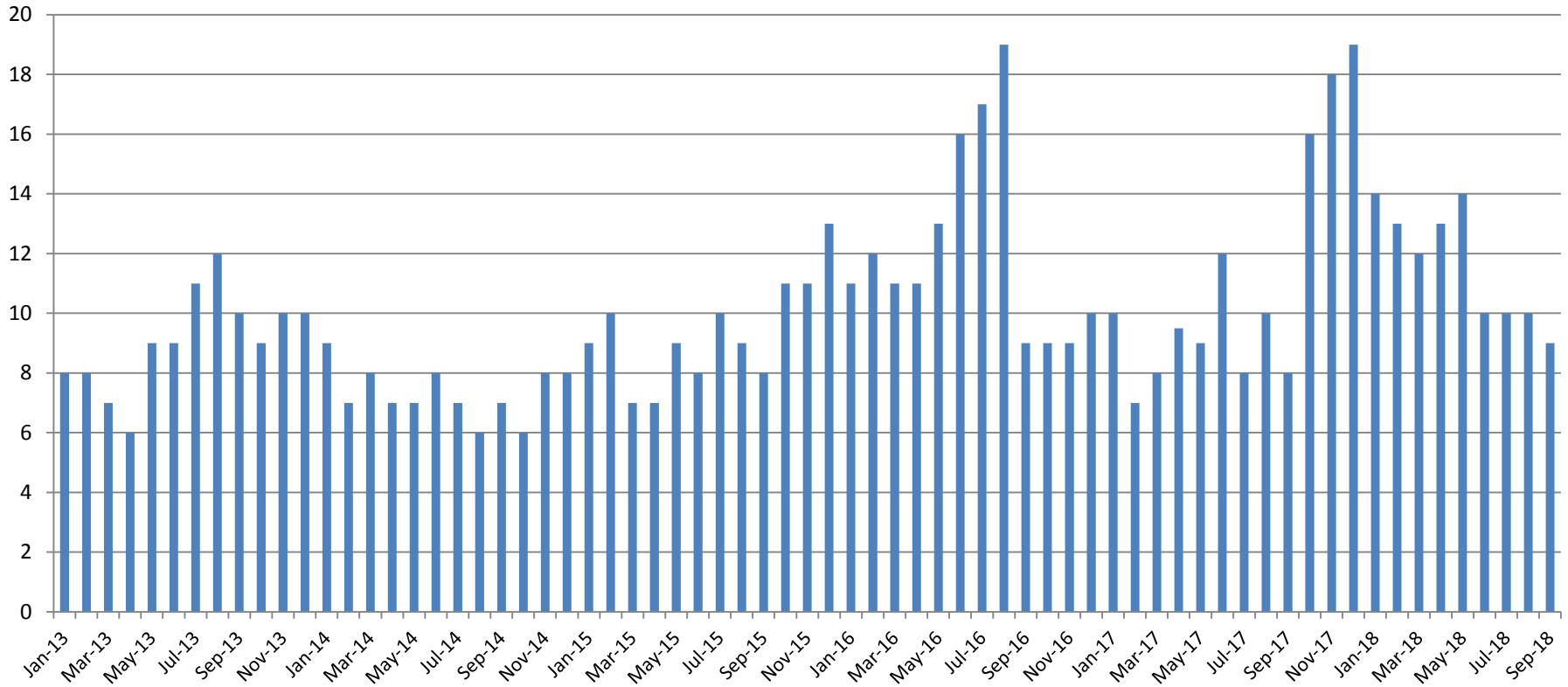


BICE Hold	2013	2014	2015	2016	2017	2018
October	2	6	5	3	24	20

Felony Commitments	2013	2014	2015	2016	2017	2018
October	116	123	198	107	149	90

(data obtained from SG CO DIO)

Journal Entry Completion (Average Days) January 2013-Present



Sept.	2013	2014	2015	2016	2017	2018
Avg. Days	10	7	8	9	8	9
YTD Avg.	9	7	9	13	9	11.7

(data obtained from District Court) This data is always reported a month behind

