

BOARD OF BIDS AND CONTRACTS APRIL 4, 2019

**ITEMS REQUIRING BOCC APPROVAL
(4 Items)**

1. ROAD IMPROVEMENT-- PUBLIC WORKS

FUNDING -- R175 PREVENTIVEMX-16+

(Request sent to 46 vendors)

RFB #19-0025 S/C #8000144936

Engineer's Estimate: \$586,611.50	Dustrol, Inc.	
2019 Hot-In-Place Asphalt Recycled Pavement (R175-M)	\$551,632.29	
Bid Bond	Y	
No Bid	Bettis Asphalt & Construction, Inc.	
	APAC-Kansas, Inc.	Cillessen & Sons, Inc.
	RoadSafe Traffic Systems	Traffic Control Services

On the recommendation of Joseph Thomas, on behalf of Public Works Richard Powell moved to **accept the bid from Dustrol, Inc. in the amount of \$551,632.29**. Ellen House seconded the motion. The motion passed unanimously.

Hot-in-Place Asphalt Surface Recycling (HIR) is a form of asphalt recycling that utilizes a train of equipment to correct surface distress in the top 2" of the road. This method uses a plant that heats the pavement surface, scarifies the pavement surface using a bank of nonrotating teeth, adds a rejuvenating agent to improve the recycled asphalt binder viscosity then mixes and levels the recycled mix. The recycled asphalt pavement is then compacted using conventional compaction equipment.

This process restores surface flexibility, increases skid resistance, fills ruts and can reestablish the road crown, when needed, for improved drainage. An ultra-thin surface course or sealant, depending on traffic volume is needed to complete the process.

This road improvement project includes approximately 5 miles of two lanes from 29th St. North between 167th St. West and 247th St. West.

Note:

Bettis Asphalt and Construction, Inc. was contacted to inquire as to why they did not provide a bid. The vendor stated their current scheduling did not allow them to submit a bid response.

Russell Leeds: Do we have any questions from the Board. I have a couple questions. We had several no bid vendors, do most or all those vendors have the equipment and or the ability to do this work? They just elected not to do it for whatever reason.

Jim Weber: I was just looking at the list. Three of them who actually do traffic control, would not do this kind of work. APAC Kansas, we don't think they're set for that but they potentially could do that they're an asphalt contractor. They certainly should be somebody that would know about the bid work. Cillessen & Sons, Inc., RoadSafe Traffic Systems and Traffic Control Services don't do actual paving. They do pavement markings and signing. One of them may be subcontractors to Dustrol, Inc. in this case because Dustrol doesn't do that type of work. So it's good for these people to know about it because we need the subcontractors to know about to work with the contractors, but they're not going to bid as the primes.

Russell Leeds: It appears that Bettis Asphalt & Construction, Inc. probably has the capability but because of their scheduling and work load...

Jim Weber: Yes, Bettis bid last year. Bettis has been very successful with KDOT. So their schedule is full. They would have otherwise bid this, I think.

Russell Leeds: Okay, that's all I have. Any other questions from the board?

Richard Powell: One more, sir. This is our regular ongoing maintenance that we do throughout our county?

Jim Weber: Right. Part of our preventative maintenance program. We spend \$9.5 million a year on preventative maintenance. There are about 8 or 10 different contracts that we let to do different things in different places depending on the condition of the roads and what we're trying to do.

Richard Powell: Thank you, sir.

BOARD OF BIDS AND CONTRACTS APRIL 4, 2019

**2. TELESCOPING STEEL SIGN POSTS -- PUBLIC WORKS
FUNDING -- PUBLIC WORKS**

(Request sent to 54 vendors)

RFB #19-0004 Contract

	Estimated Yearly Quantity	Welborn Sales, Inc.		J & A Traffic Products	
		Unit Price	Extended Price	Unit Price	Extended Price
Ea. 12 Gauge sq. Steel Post - 8' x 1.75" x 1.75"	200	\$22.81	\$4,562.00	\$20.25	\$4,050.00
Ea. 12 Gauge sq. Steel Post - 9' x 1.75" x 1.75"	300	\$25.67	\$7,701.00	\$22.75	\$6,825.00
Ea. 12 Gauge sq. Steel Post - 10' x 1.75" x 1.75"	200	\$28.52	\$5,704.00	\$25.30	\$5,060.00
Ea. 12 Gauge sq. Steel Anchor - 3' x 2" x 2"	500	\$11.06	\$5,530.00	\$8.95	\$4,475.00
Ea. 12 Gauge sq. Steel Anchor - 2.25" x 2.25" x 18"	500	\$8.38	\$4,190.00	\$5.55	\$2,775.00
Freight Cost		\$450.00		Included	
Grand Total		\$28,137.00		\$23,185.00	
Days for delivery		30 working days		14-21	
No Bid		American Traffic Safety		Desingovations, Inc.	
		Midwest Rubber Company		National Sign Co., Inc.	
		Pathmark Traffic Products,		Republic Companies	

On the recommendation of Paul Regehr, on behalf of Public Works, Ellen House moved to **accept the bid from J & A Traffic Products for an initial purchase of \$23,185.00 and establish contract pricing for one (1) year with two (2) one (1) year options to renew.** Richard Powell seconded the motion. The motion passed unanimously.

The telescoping sign posts are the standard posts that support traffic signs.

Estimated annual spend for 2018 was \$23,239.73.

BOARD OF BIDS AND CONTRACTS APRIL 4, 2019

3. CHAIN LINK FENCING FOR ANDALE YARD/ON-CALL FENCING CONTRACT -- PUBLIC WORKS/VARIOUS DEPARTMENTS
FUNDING -- ANDALE YARD

(Request sent to 28 vendors)

RFB #19-0009 SC #8000144976/Contract

	Unit of Measure	Amerifence Corporation	American Fence Company	ICT Plus, LLC	Kansas Fence Co., Inc.	Larry Cook Construction	Reddi Fence LLC dba Aero Fence	Newberry Fence
Andale Yard Fence Project		\$37,350.00	\$35,981.00	\$35,793.10	\$28,841.00	\$39,982.00	\$31,173.00	\$32,444.00
On-Call Fence								
1. 4' tall 9 gauge chain link fabric	Per Foot	No Bid	No Bid	\$2.54	\$4.02	No Bid	\$2.25	\$2.64
2. 6' tall 9 gauge GAW chain link fabric	Per Foot	No Bid	No Bid	\$3.80	\$6.02	No Bid	\$3.40	\$3.95
3. 8' tall 9 gauge GAW chain link fabric	Per Foot	No Bid	No Bid	\$5.12	\$8.04	No Bid	\$4.60	\$5.24
4. 12' tall 9 gauge GAW chain link fabric	Per Foot	No Bid	No Bid	\$7.68	\$12.06	No Bid	\$6.10	\$7.90
5. 2 3/8" schedule 40 line posts	Per Foot	No Bid	No Bid	\$3.87	\$5.76	No Bid	\$2.40	\$3.22
6. 2 7/8" schedule 40 line terminal posts	Per Foot	No Bid	No Bid	\$5.44	\$9.24	No Bid	\$3.60	\$4.79
7. 1 5/8" schedule 40 pipe top rail	Per Foot	No Bid	No Bid	\$2.06	\$3.54	No Bid	\$1.55	\$1.89
8. 7 gauge tension wire	Per Foot	No Bid	No Bid	\$0.12	\$0.50	No Bid	\$0.15	\$0.15
9. 9 gauge tension wire	Per Foot	No Bid	No Bid	\$0.07	\$0.40	No Bid	\$0.08	\$0.10
10. 10' x 8' gate	Each	No Bid	No Bid	\$458.18	\$1,000.00	No Bid	\$450.00	\$797.00
11. 12' x 8' gate	Each	No Bid	No Bid	\$549.82	\$1,200.00	No Bid	\$500.00	\$849.00
12. 16' x 8' gate	Each	No Bid	No Bid	\$733.09	\$1,400.00	No Bid	\$550.00	\$954.00
13. 20' x 8' gate	Each	No Bid	No Bid	\$916.36	\$1,600.00	No Bid	\$625.00	\$994.00
14. 6' tall plastic vertical slate inserts (bottom locking)	Case	No Bid	No Bid	\$80.00	\$107.00	No Bid	\$53.00	\$57.39
15. 8' tall plastic vertical slate inserts (bottom locking)	Case	No Bid	No Bid	\$105.00	\$125.00	No Bid	\$73.00	\$76.08
Labor Cost Per Hour Monday - Friday 8:00 a.m. - 5:00 p.m.	Hour	No Bid	No Bid	\$90.00	\$110.00	No Bid	\$67.50	\$119.00
Material Mark-Up Percentage. This is for items not listed. Please use your cost and only list the percentage mark-up based on your cost of parts.	Percentage	No Bid	No Bid	9.00%	No Bid	No Bid	10.00%	19%
Addenda		Y	Y	Y	Y	Y	Y	Y
No Bid		Hesse Fence			Wayne's Fence Company			

On the recommendation of Paul Regehr, on behalf of Public Works, Richard Powell moved to **accept the low bid for the Andale Yard Fence Project from Kansas Fence Co., Inc. in the amount of \$28,841.00 and accept the overall low bid from Reddi Fence LLC dba Aero Fence for on-call services and establish contract pricing for two (2) years with three (3) one (1) year options to renew.** Linda Kizzire seconded the motion. The motion passed unanimously.

Andale Yard Fence Project - The Public Works Andale Yard requires additional fencing due to increased residential activity in the adjacent subdivision. This request for bid provided an estimate of the eight (8) foot fence and parts needed to complete this project. Each bidder provided exact specifications for labor and materials in their bid submission.

On-Call Fencing - The county also desires to establish an On-Call Fencing contract for all of Sedgwick County departments to utilize for any fencing requirements.

Russell Leeds: Questions from the board?

Richard Powell: The reasoning behind the fence is this just for additional security measures or is this for privacy blockage, field of view? Things like that?

Jim Weber: A little bit of both. It's primarily, there isn't really anything adjacent right now. But it's a security issue. We've actually had neighborhood kids digging in the stock piles. That's not good. So it includes some screening because it's in a neighborhood on two sides. I will also point out that we're not doing the entire yard at this point because it's still an ongoing conversation about the fire station out there. So the front and some of the part down by the railroad will not be included in this work and we'll do that later whenever we decide what we're doing with the fire station. We need to cut off the kids from the back side basically right now.

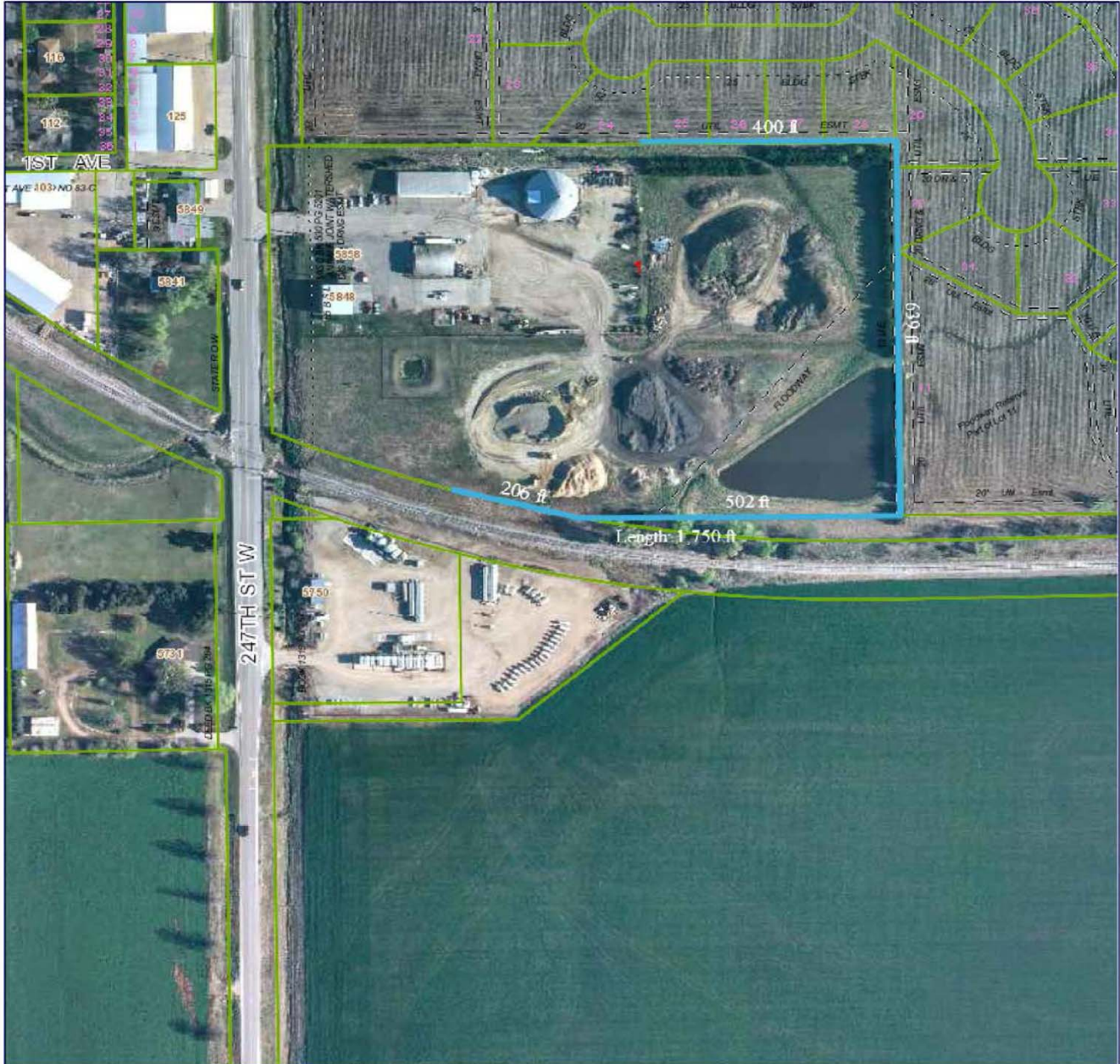
Richard Powell: Thank you, sir.

Russell Leeds: Any additional questions from the board? Do we have many fencing projects that will utilize the services of an on-call fencing?

Jim Weber: I don't know about rest of the county. We're interested in the on-call because we'll occasionally have a piece of equipment that will get tangled up with a private fence. We need to go back and get the fence repaired, so we would use the on-call contractor to make the fence repairs as they come up.

Russell Leeds: Any other questions?

ANDALE YARD - 8' CHAIN LINK FENCE



Geographic Information Services
 Sedgwick County...
 working for you

Geographic Information Services
 Division of Information & Operations
www.sedgwickcounty.org/gis
 525 N. Main, Suite 212, Wichita, KS 67203
 Tel: 316.660.9290 Fax: 316.262.1174
 Tue Jan 8 15:08:31 GMT-0600 2019

DISCLAIMER: It is understood that, while Sedgwick County Geographic Information Services (SCGIS), City of Wichita GIS, (for purposes of the road centerline file), participating agencies, and information suppliers, have no indication or reason to believe that there are inaccuracies in information provided, SCGIS, its suppliers make no representations of any kind, including, but not limited to, warranties of merchantability or fitness for a particular use, nor are any such warranties to be implied with respect to the information, data or service furnished herein. In no event shall the Data Providers become liable to users of these data, or any other party, for any loss or damages, consequential or otherwise, including but not limited to time, money, or goodwill, arising from the use, operation or modification of the data. In using these data, users further agree to indemnify, defend, and hold harmless the Data Providers for any and all liability of any nature arising out of or resulting from the lack of accuracy or correctness of the data, or the use of the data. No person shall sell, give or receive for the purpose of selling or offering for sale, any portion of the information provided herein.