

Criminal Justice Coordinating Council

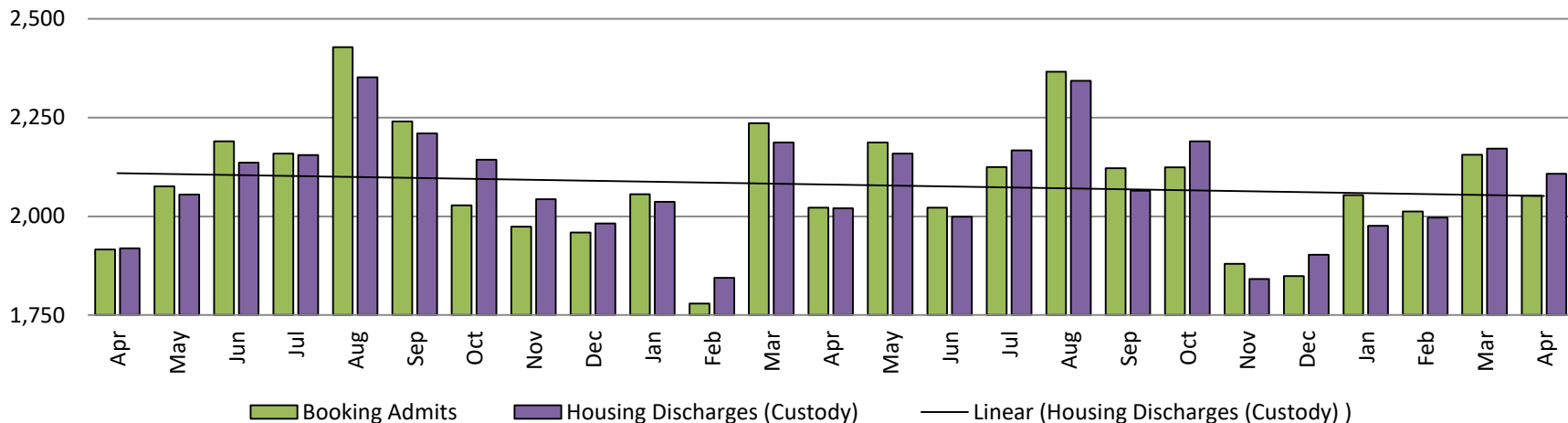
Population Report & Program Trends

May 2019

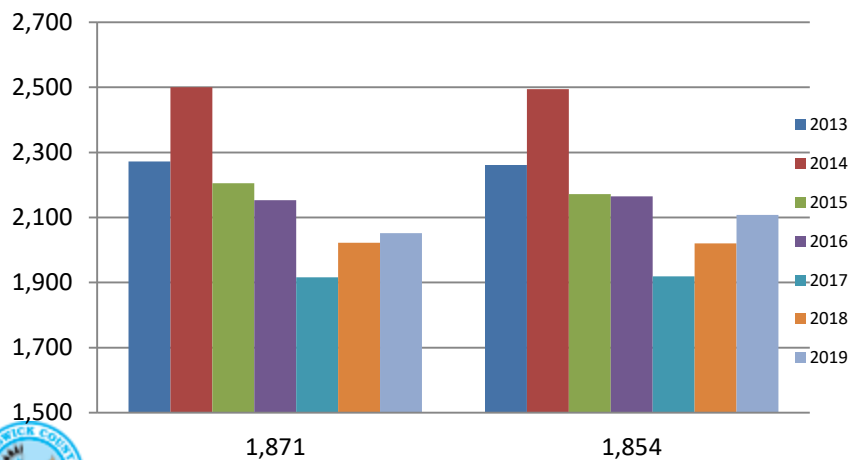


Detention Facility

Booking Admits & Housing Discharges from Custody April 2017-Present



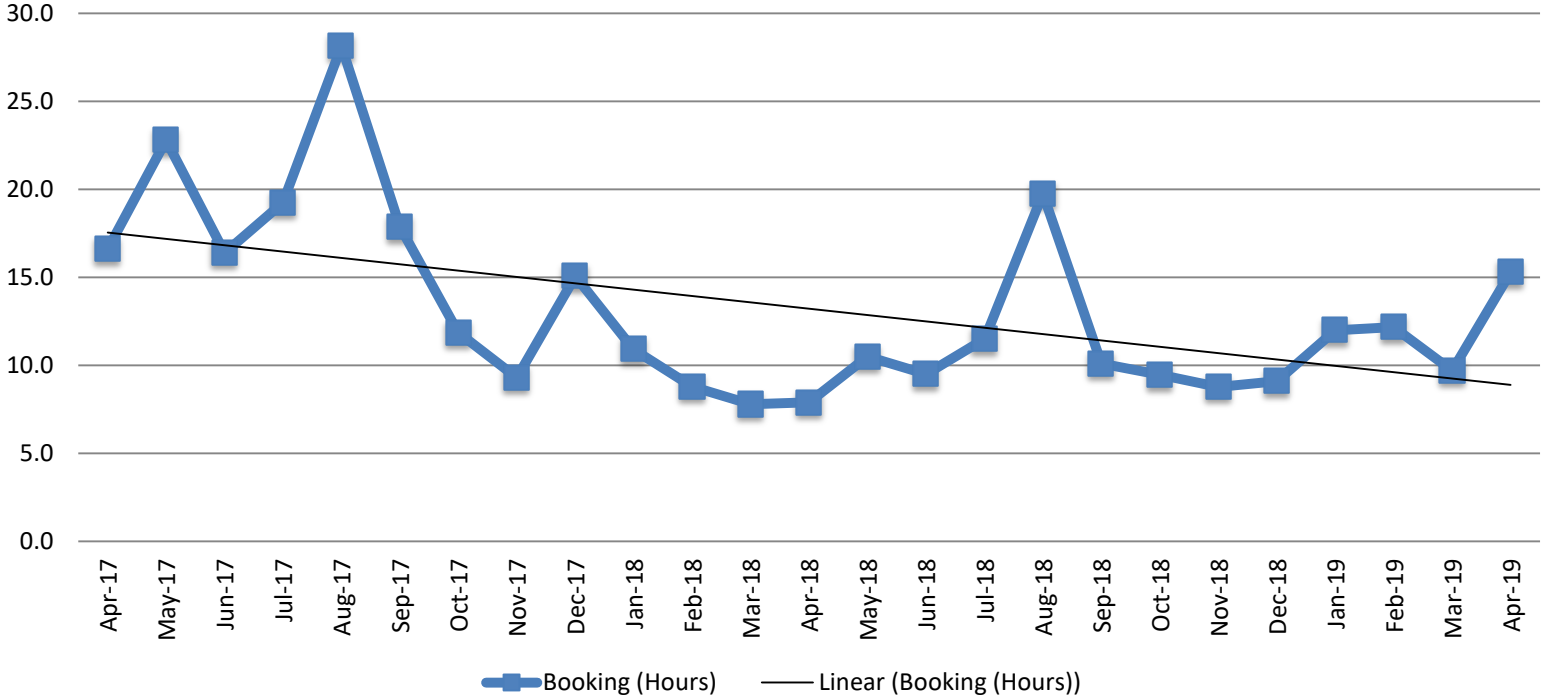
Bookings Year over Year: Month of April



Bookings April	Housing Discharges April
2017: 1,916	2017: 1,919
2018: 2,022	2018: 2,020
2019: 2,052	2019: 2,108

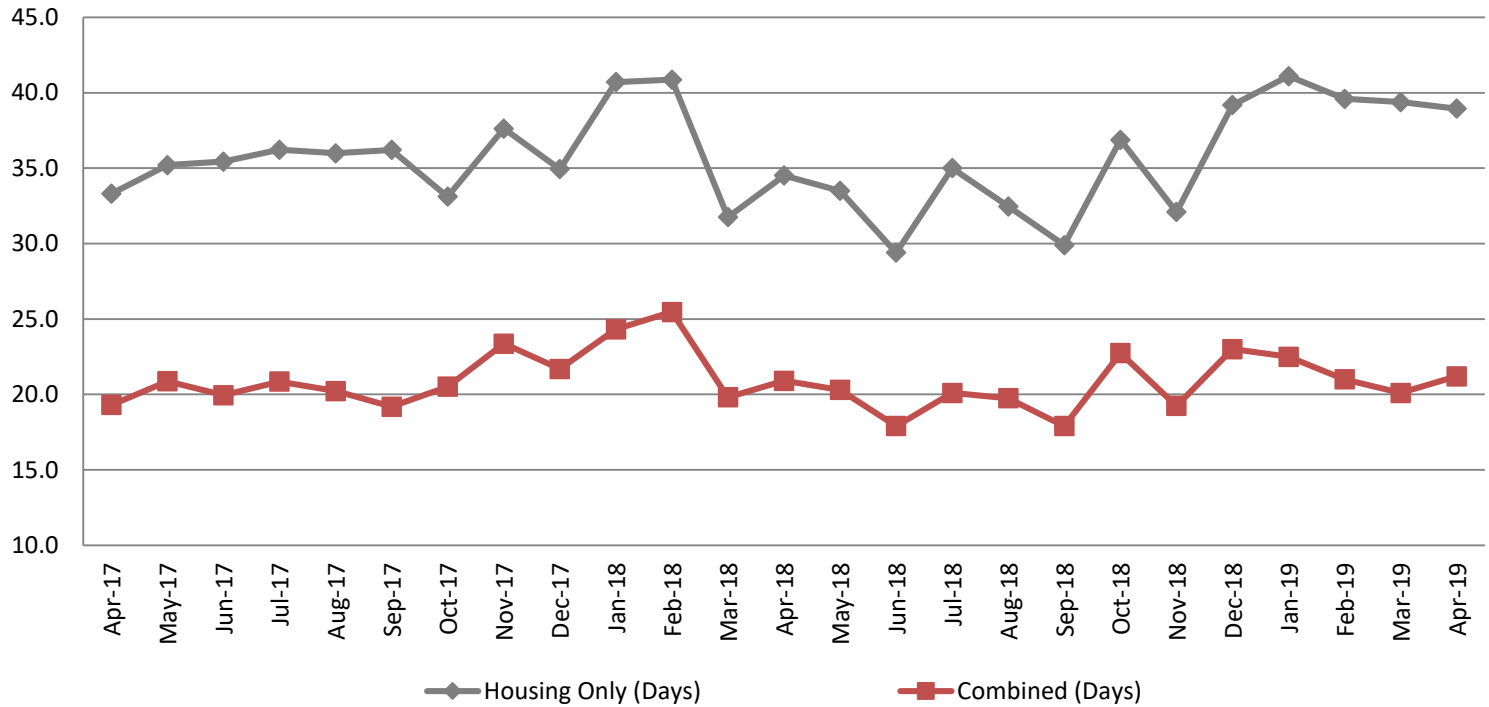
Average Length of Stay: Booking (Hours)

April 2017 - Present



April	April YTD Average
2017: 16.6	2017: 13.9
2018: 7.9	2018: 8.8
2019: 15.3	2019: 12.3

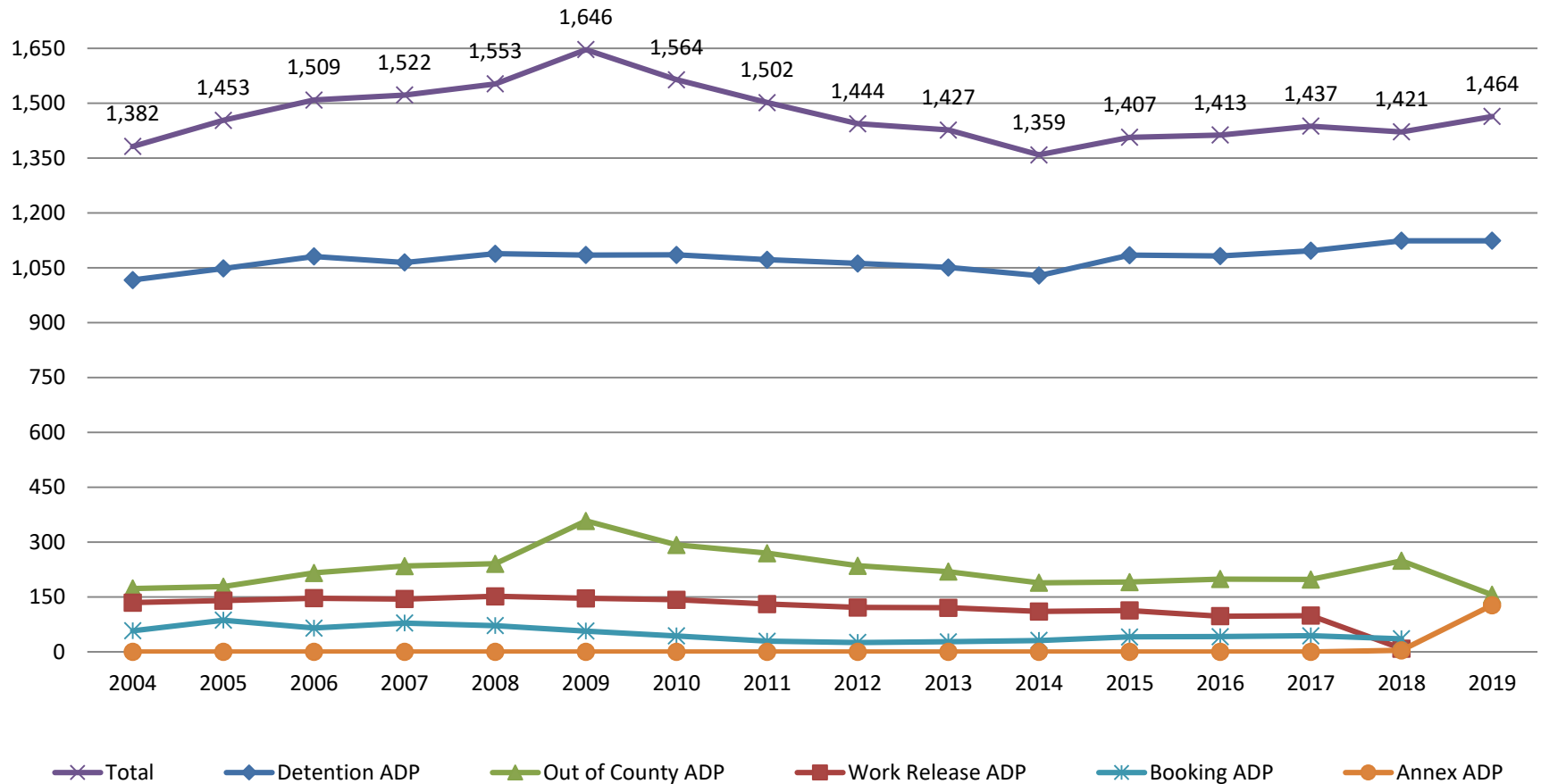
Average Length of Stay: Housing & Combined (Days) April 2017 - Present



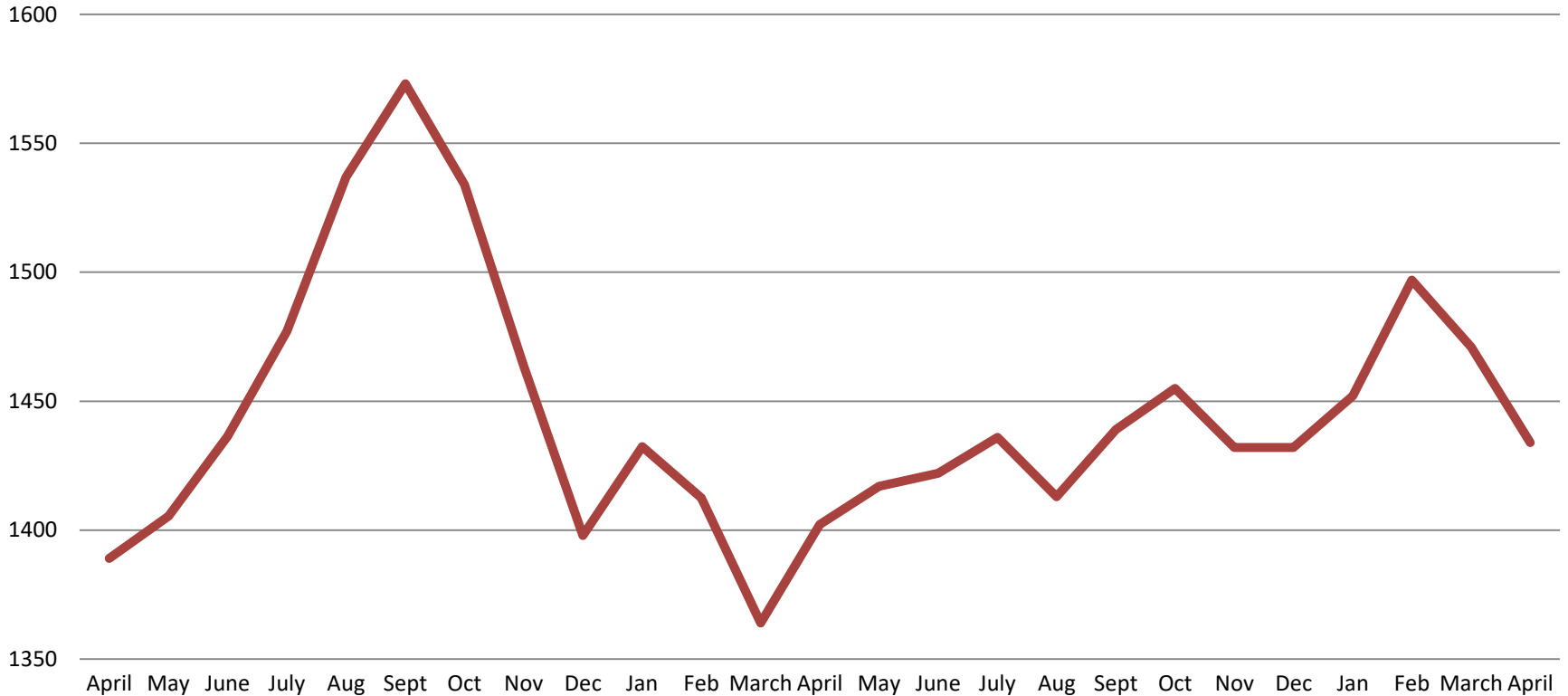
Month Year	Housing Only	Housing YTD AVG	Combined Days	Combined YTD AVG
April 2017	33.3	34.3	19.3	19.9
April 2018	34.5	37.0	20.9	22.6
April 2019	39.0	39.8	21.2	21.2

Jail: Annual Average Daily Population (ADP)

TRENDS: Booking, Detention, Work Release, & Out of County
Annual ADP: 2004 - present

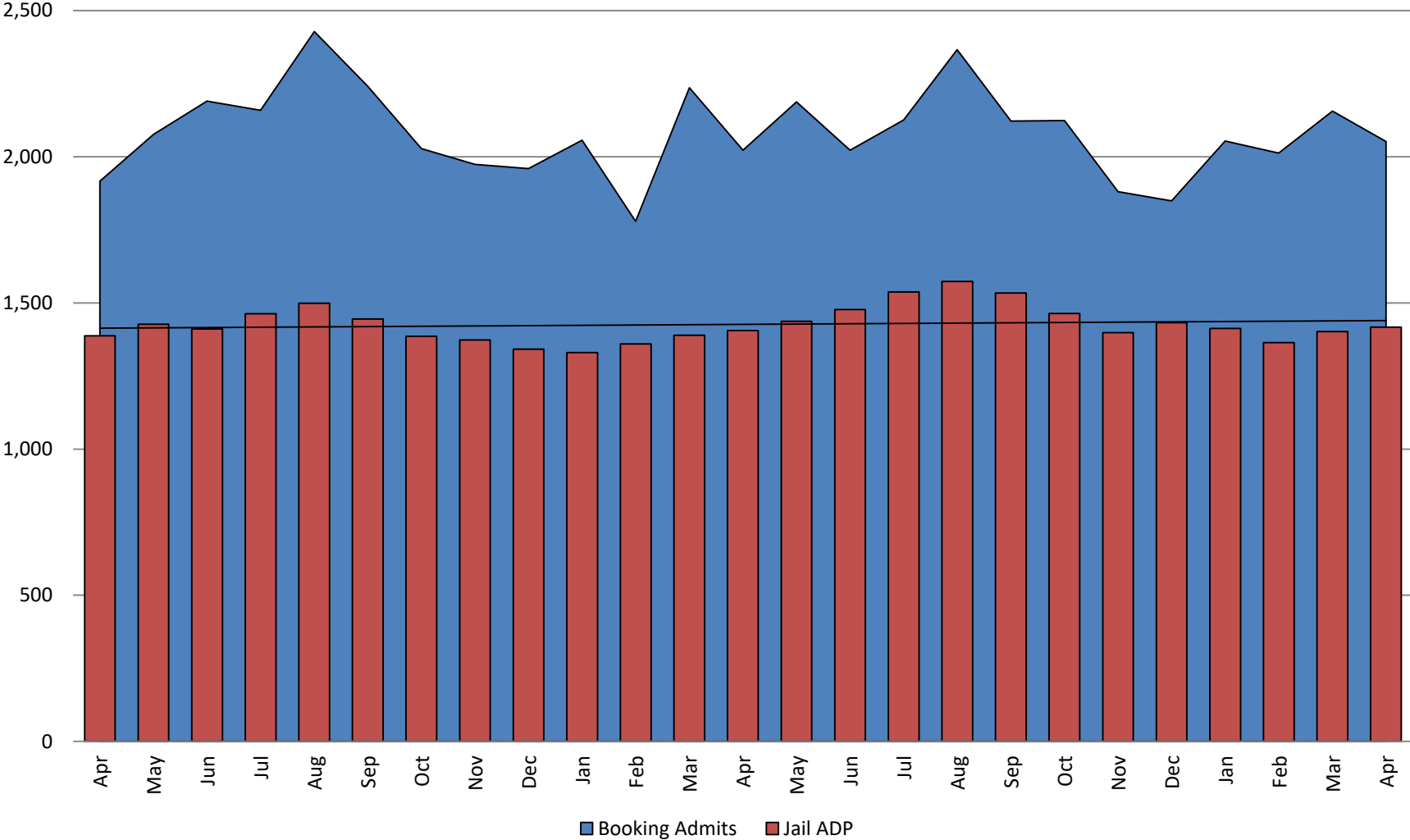


TOTAL MONTHLY ADP: JAIL (Booking, Detention Facility, Annex, & Out of County) April 2017 - present



April 2017	April 2018	April 2019
1,389	1,402	1,434

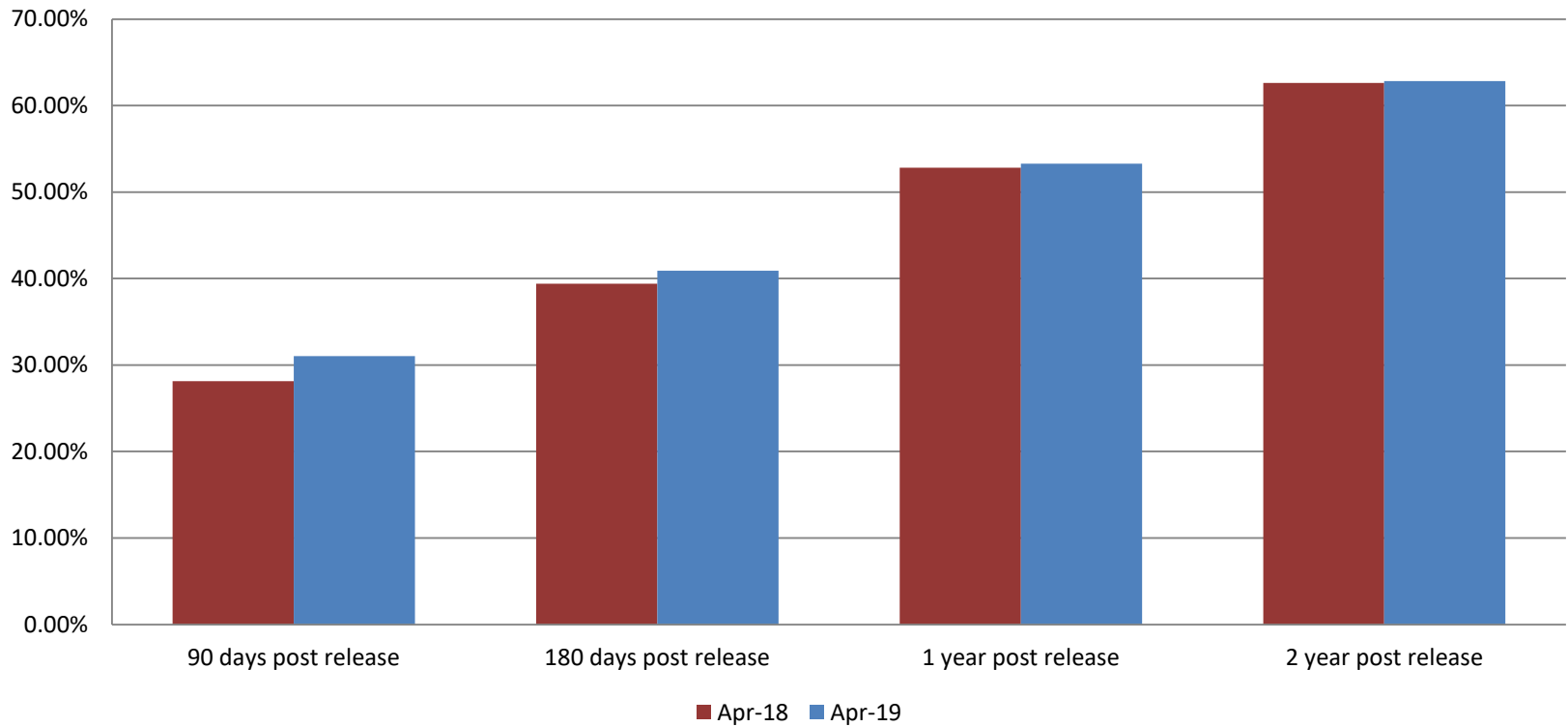
Booking Admits & Total Monthly ADP (Jail): April 2017 - present



Jail includes individuals in booking, detention, work release and out-of county (combined)
(data obtained from detention facility)



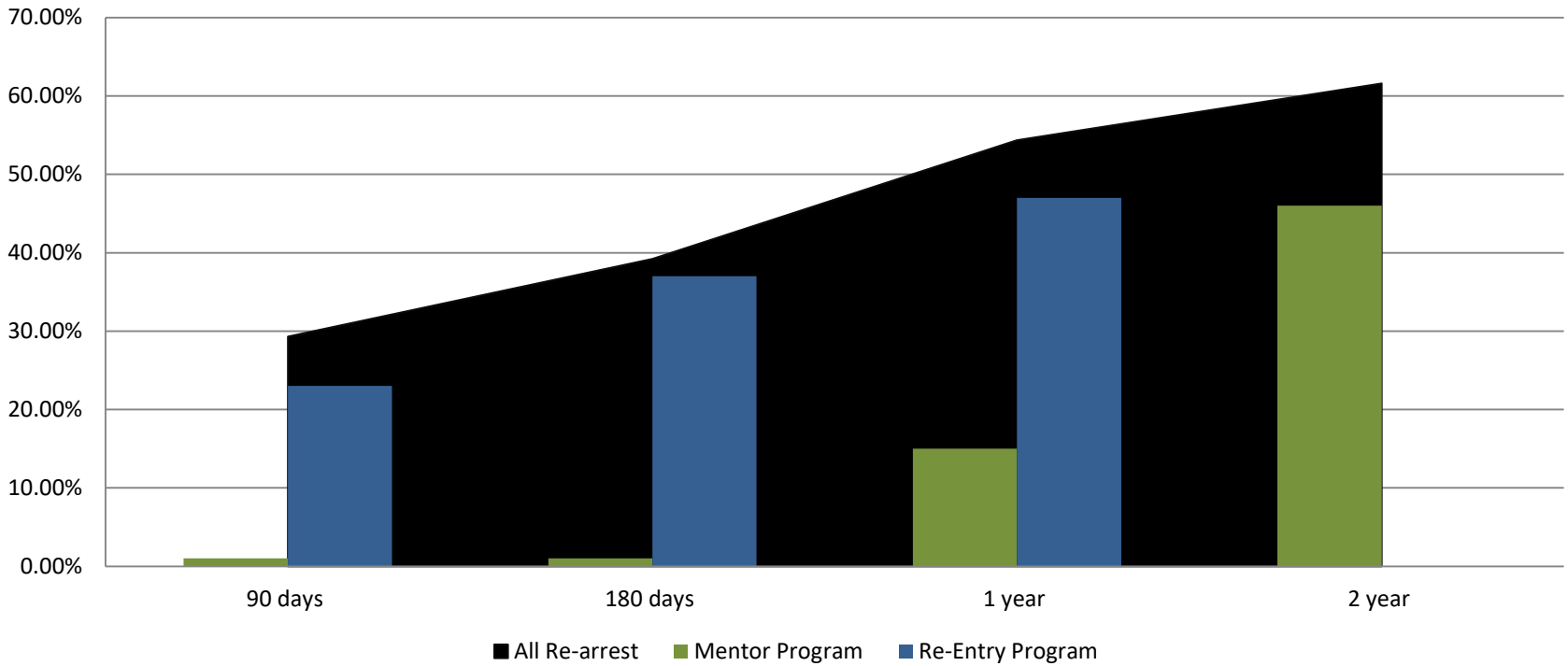
Percent of released inmates rearrested April



Month Year	90 Days	180 Days	1 Year	2 Years
April 2018	28.13%	39.41%	52.82%	62.63%
April 2019	31.02%	40.90%	53.30%	62.85%

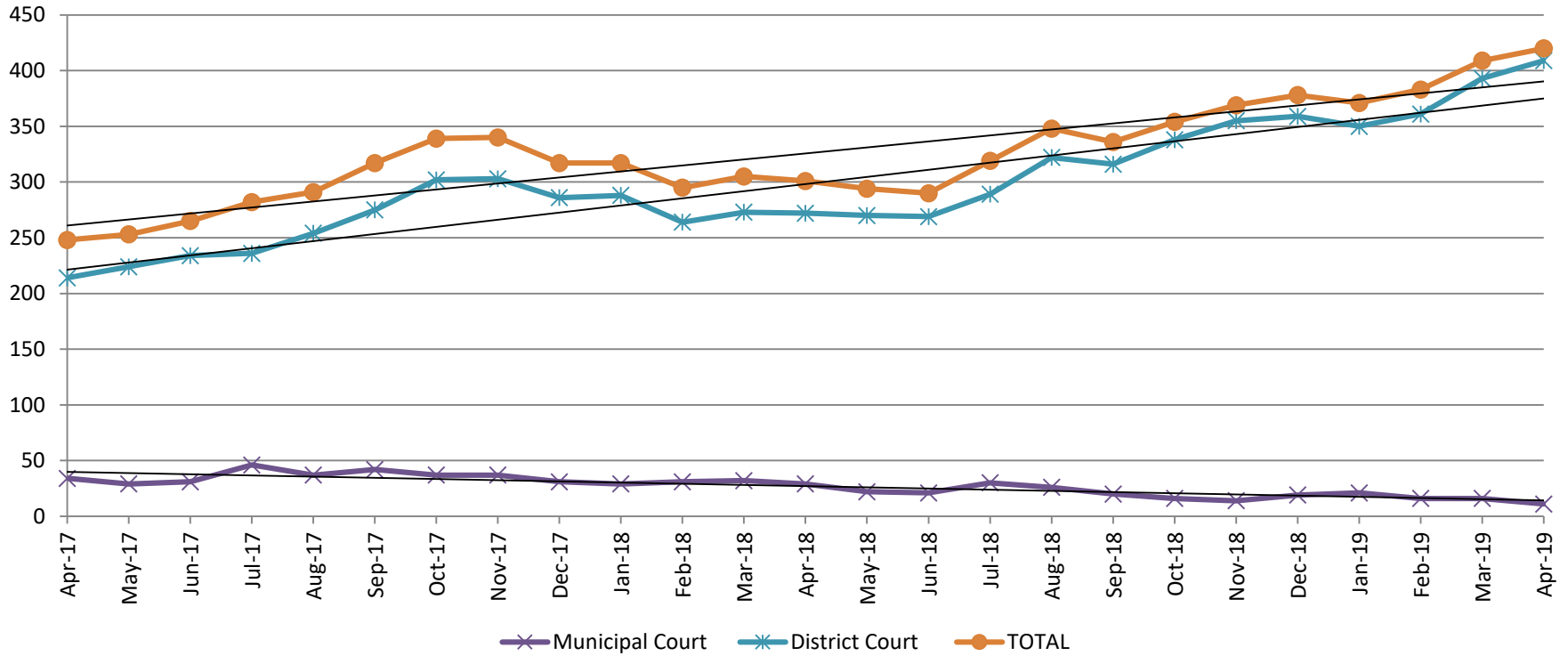


Recidivism by Programs April 2019



April 2019	90 Days	180 Days	1 year	2 years
All Re-arrests	31.02%	40.90%	53.30%	62.85%
Mentor Program	1%	1%	15%	46%
Re-Entry Program	23%	37%	47%	N/A

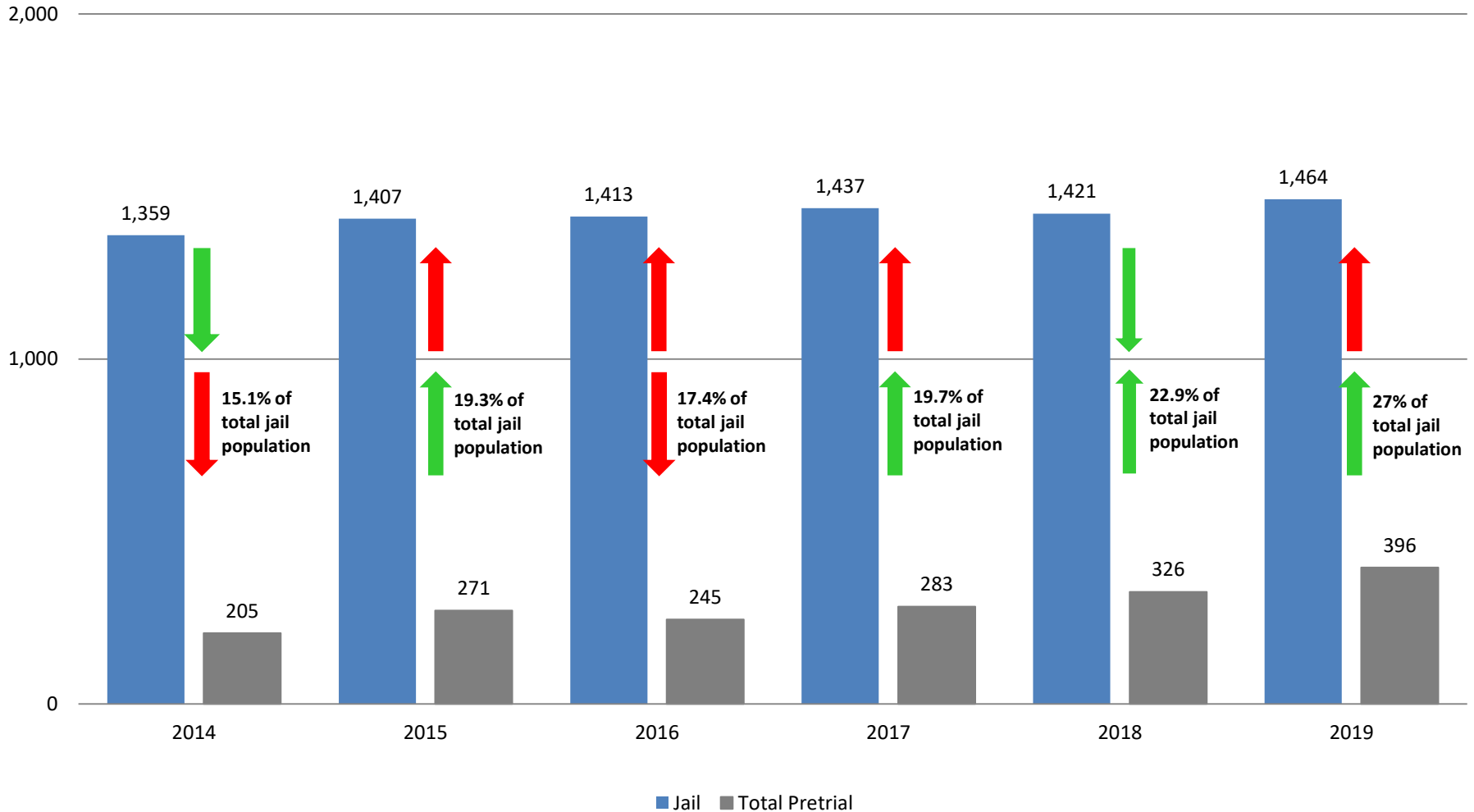
Pretrial Services Program (PSP) Monthly ADP: April 2017 - Present



April	2017 ADP	2018 ADP	2019 ADP	2017 YTD Avg.	2018 YTD Avg.	2019 YTD Avg.
Muni. Court	34	29	11	35	30	16
Dist. Court	214	272	409	213	274	378
Total	248	301	420	248	305	396

Correlation: Total & PSP

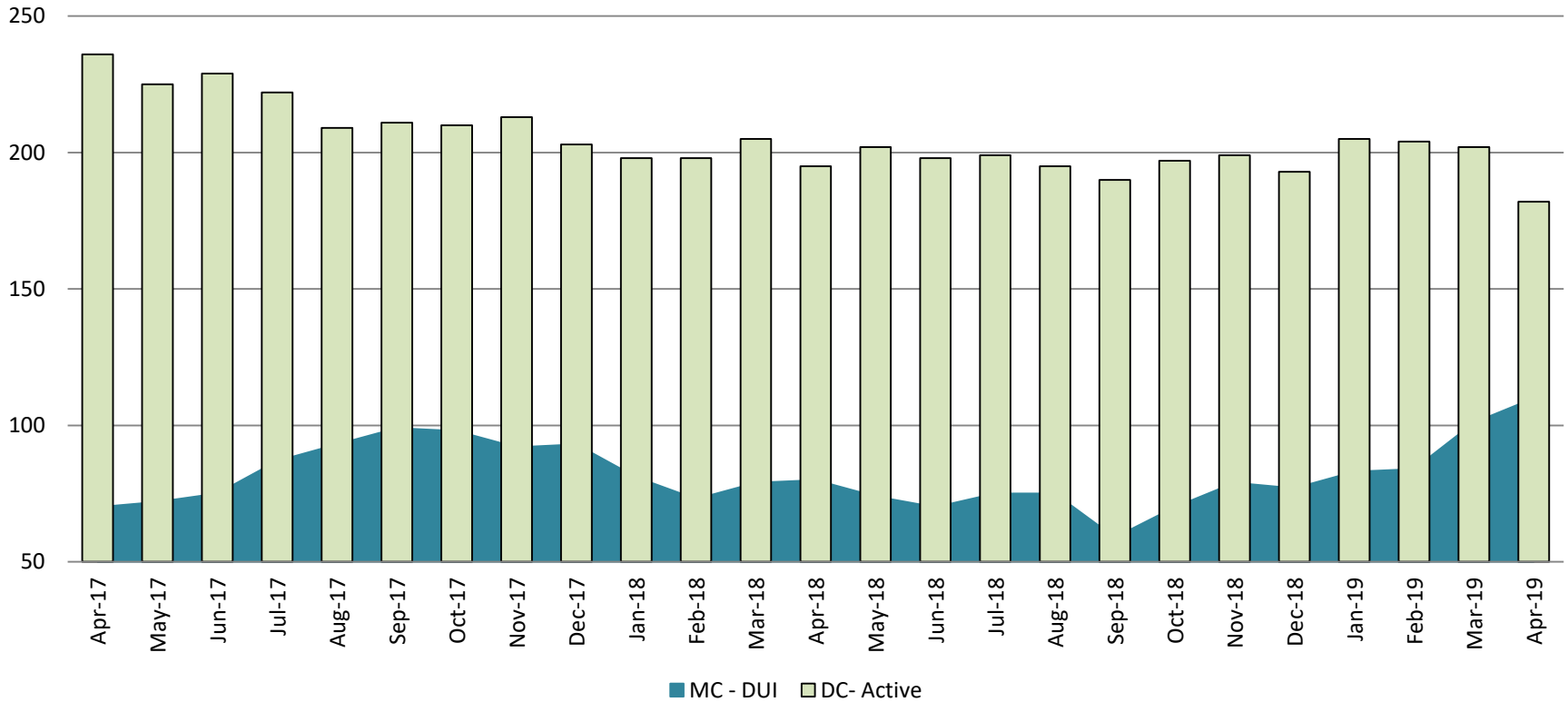
Total Annual ADP: 2014 - Present



Arrows represent the overall increase/decrease of the population from year to year
 Jail includes individuals in booking, detention, work release and out-of county (combined)
 (data obtained from detention facility & Pretrial Services)

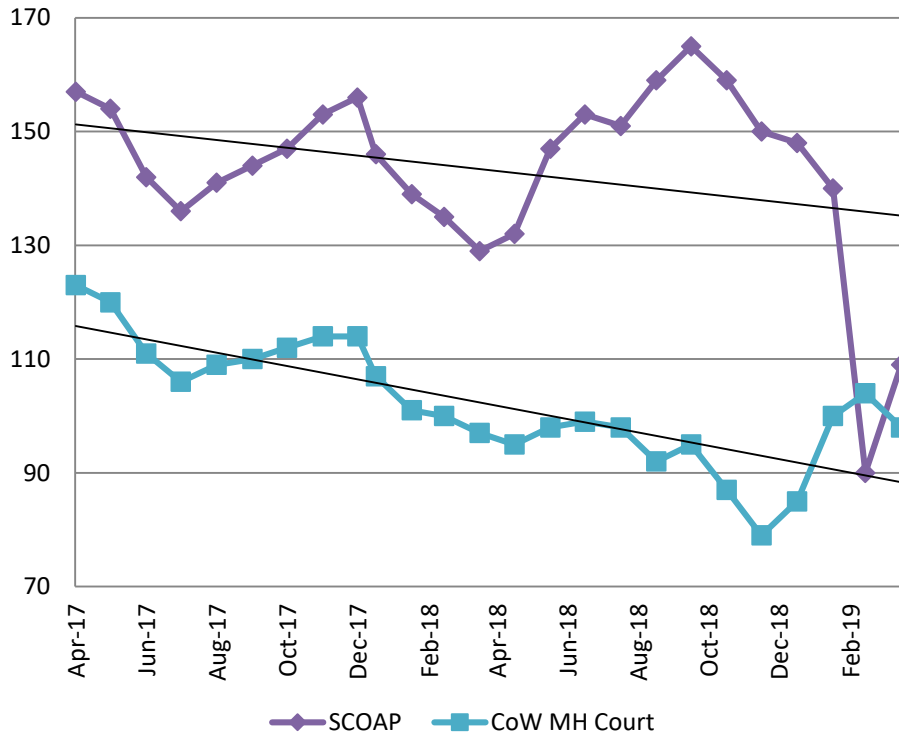
Diversion - Active Caseload

April 2017- Present

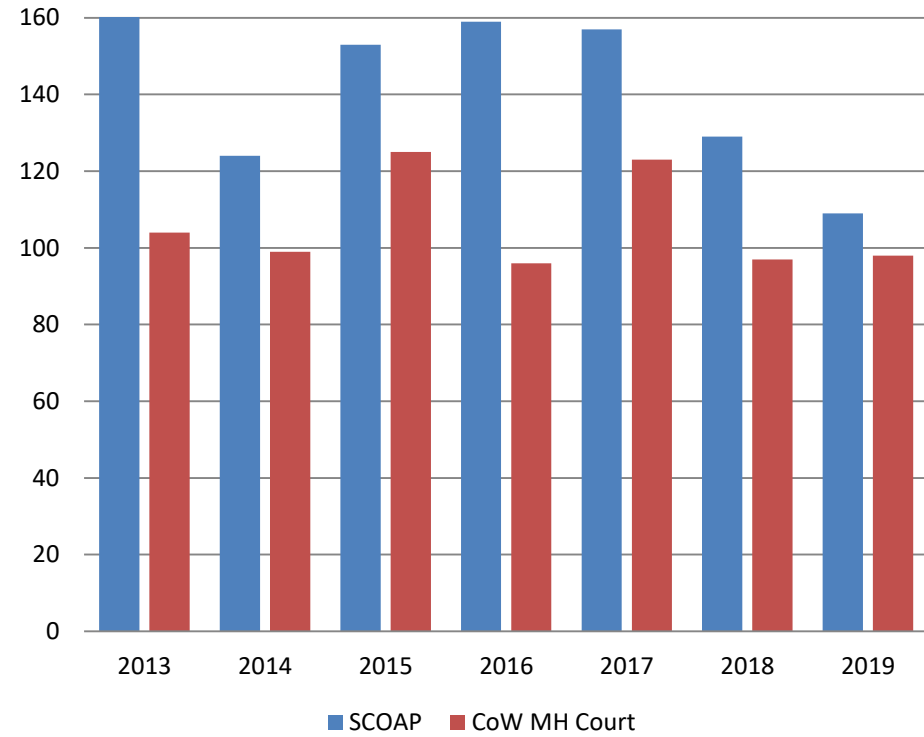


April	2017	2018	2019	2017 YTD Avg.	2018 YTD Avg.	2019 YTD Avg.
Muni. Court- DUI	70	80	110	84	78	95
Dist. Court- Active	236	195	182	236	199	198

Mental Health - ADP April 2017 - present

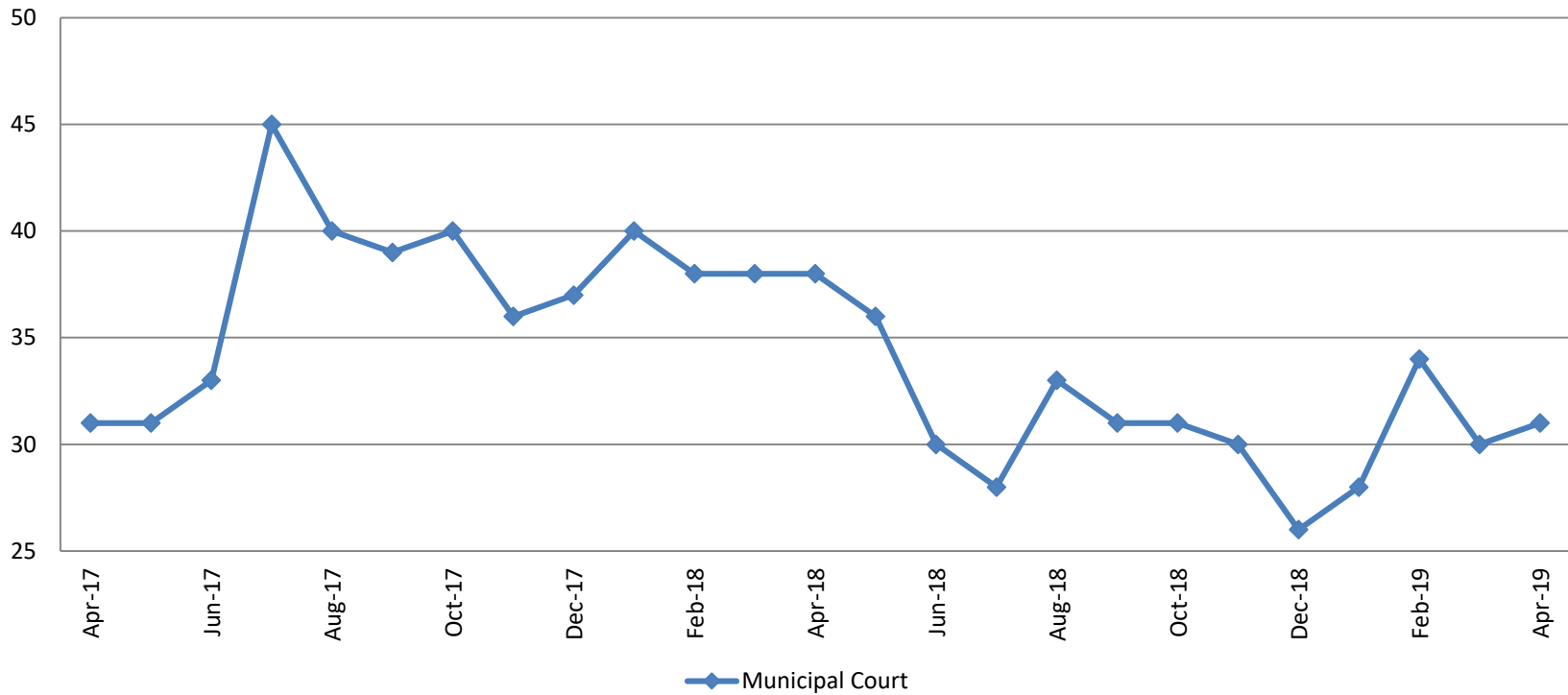


Mental Health ADP Year over Year- April



April	2017 ADP	2018 ADP	2019 ADP	2017 YTD Avg.	2018 YTD Avg.	2019 YTD Avg.
SCOAP	157	129	109	155	137	122
MH Court	123	97	98	124	101	97

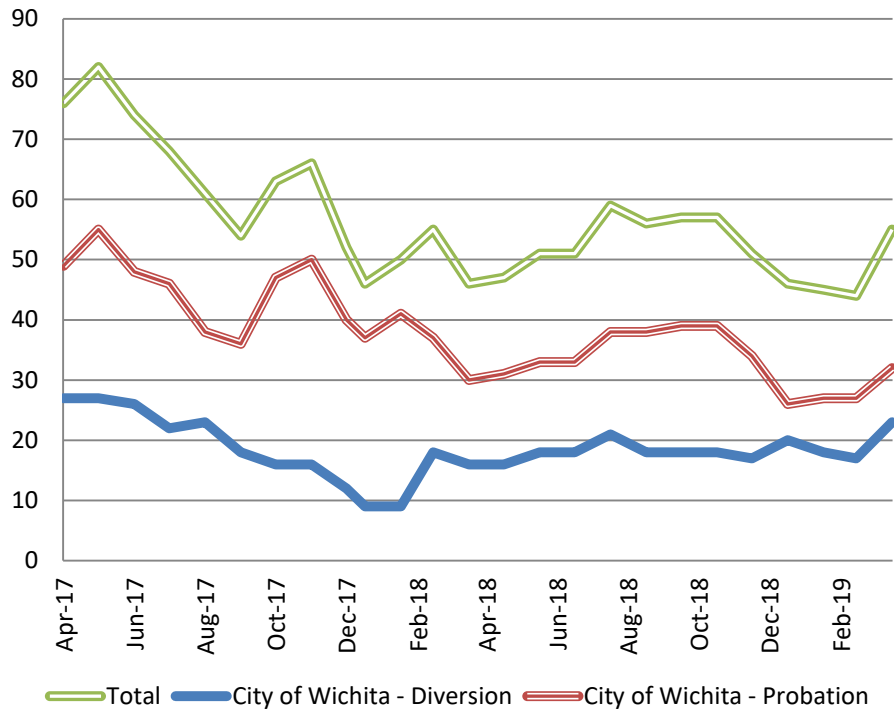
Day Reporting - Active Caseload April 2017 - Present



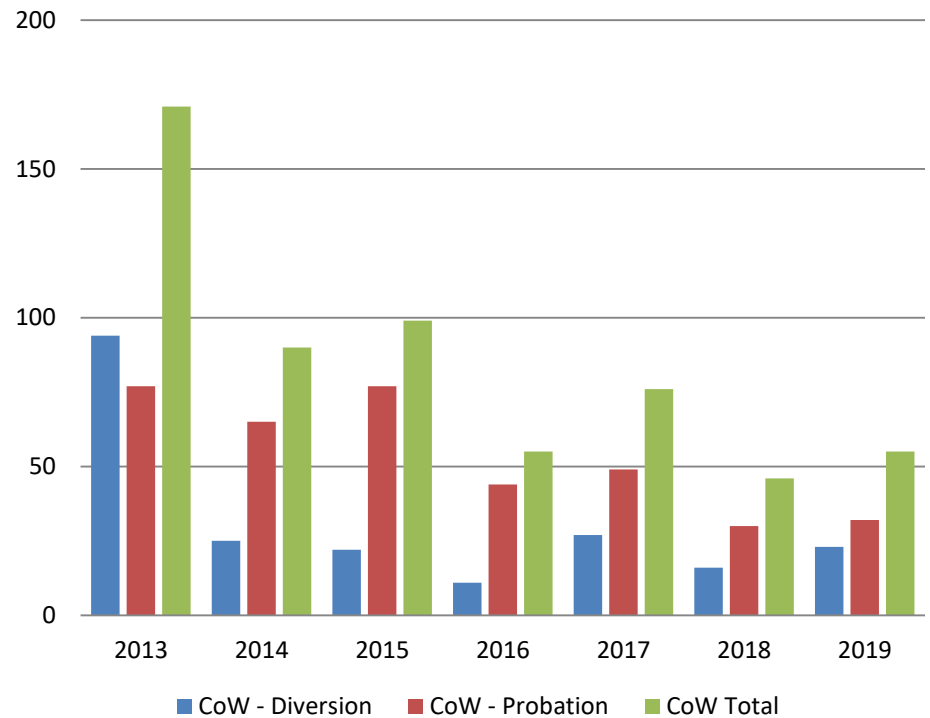
April	2014	2015	2016	2017	2018	2019
Muni. Court	80	71	50	31	38	31
Muni. Court YTD Avg.	77	71	48	33	39	31



Drug Court - City of Wichita ADP: April 2017 - present



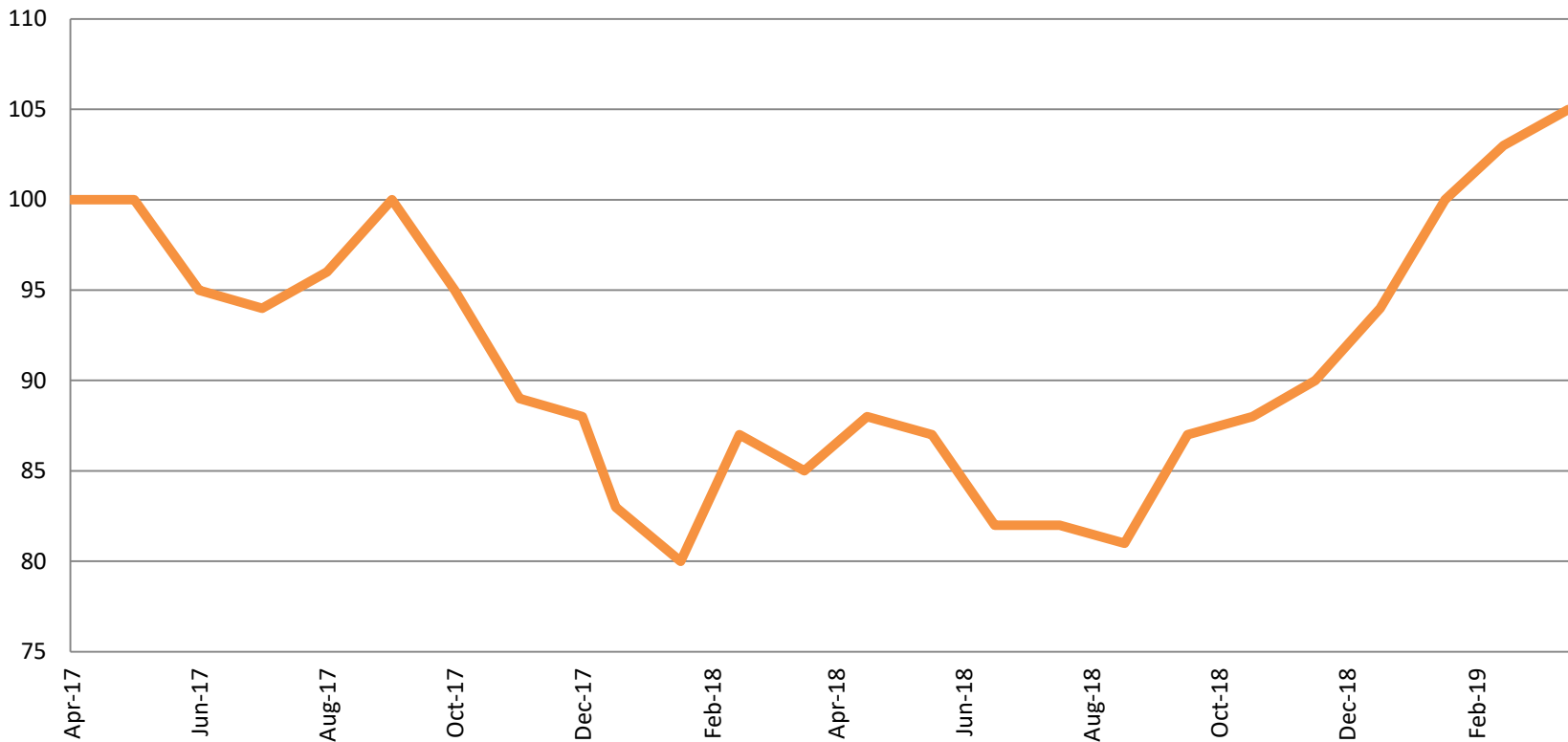
Drug Court- City of Wichita Year over Year - April



April	2017	2018	2019
Diversion	27	16	23
Probation	49	30	32
Total	76	46	55

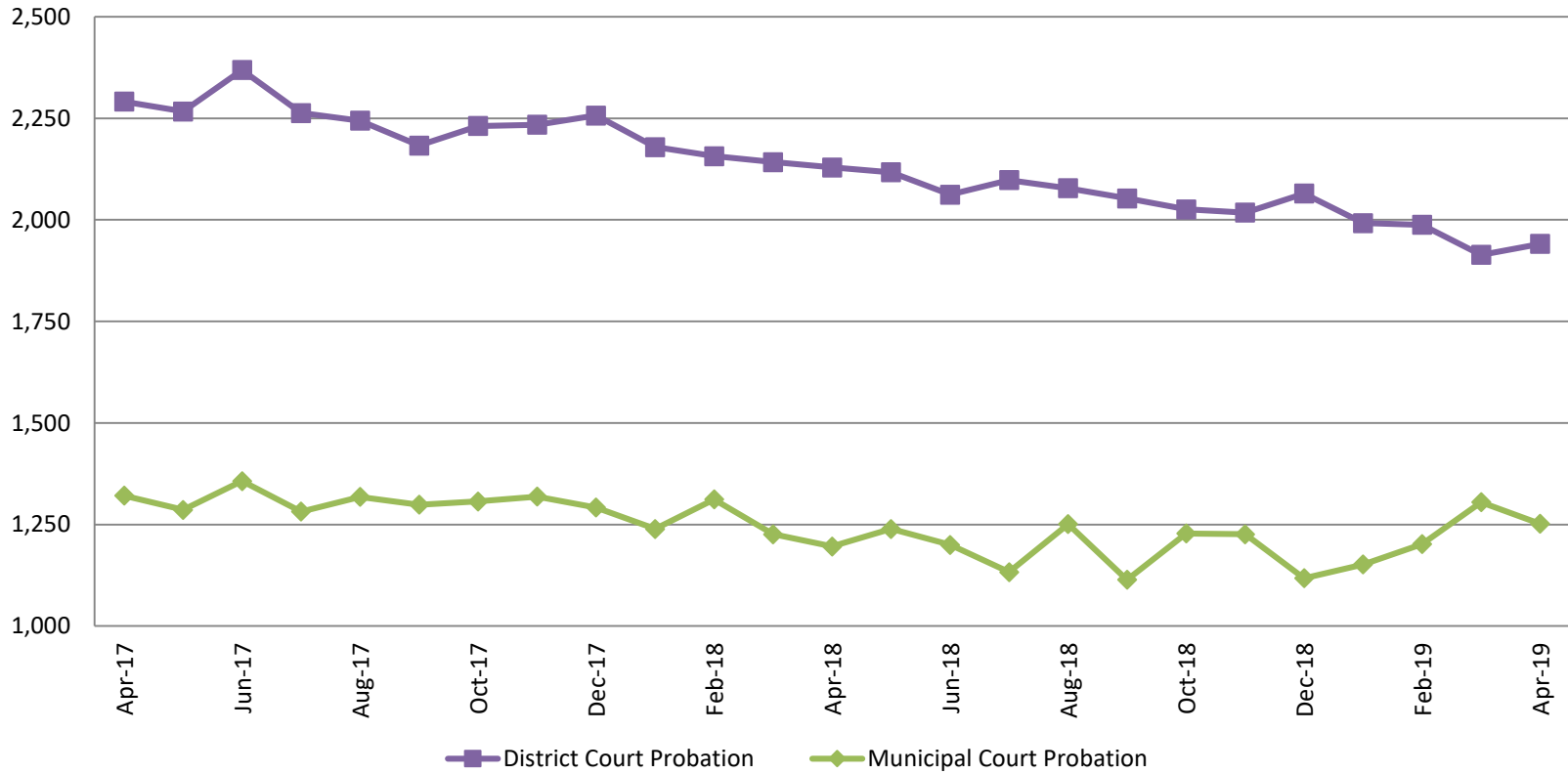


Drug Court - Sedgwick County ADP: April 2017 - present



April	2017	2018	2019
Sedg. Co. ADP	100	85	105
YTD Avg.	98	84	101

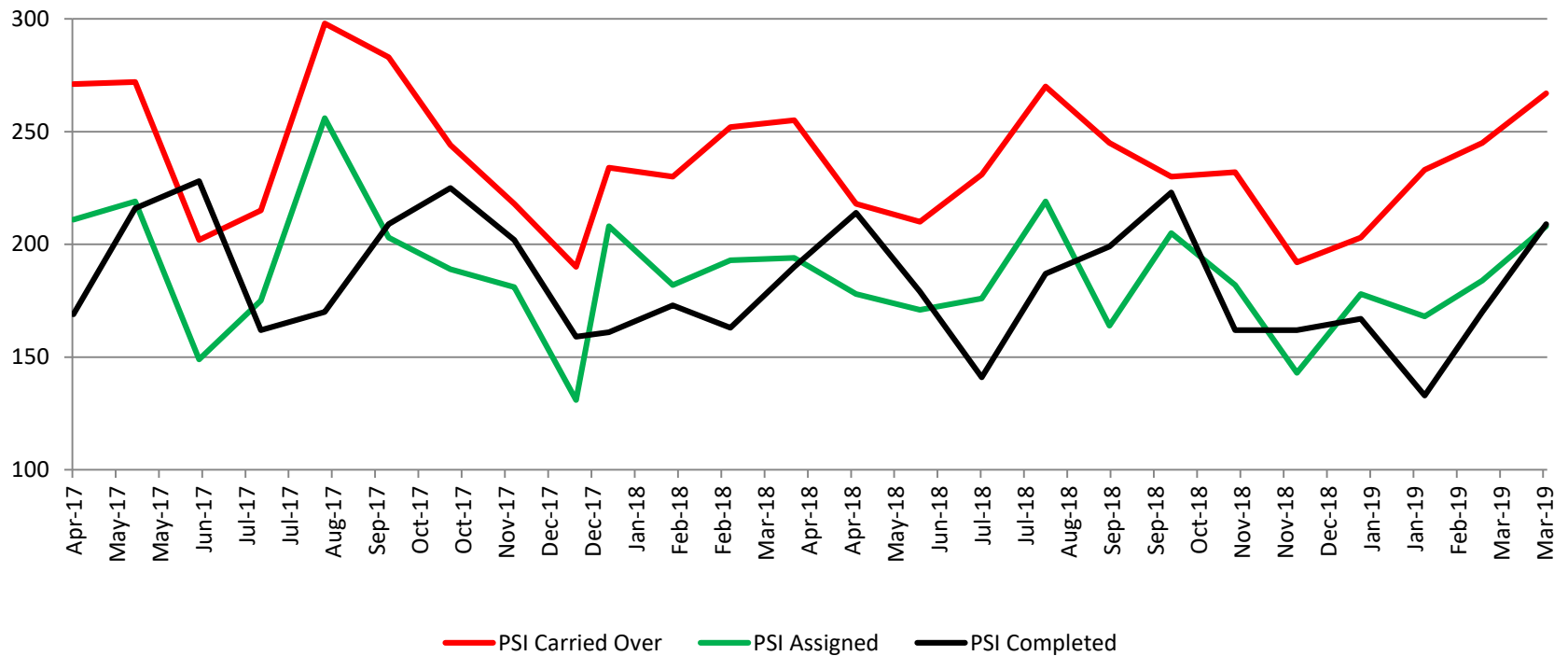
Probation - Active Caseloads April 2017 - present



April	2017	2018	2019	2017 YTD Avg.	2018 YTD Avg.	2019 YTD Avg.
Dist. Court Probation	2,291	2,129	1,941	2,246	2,152	1,959
Muni. Court Probation	1,321	1,196	1,252	1,288	1,243	1,228



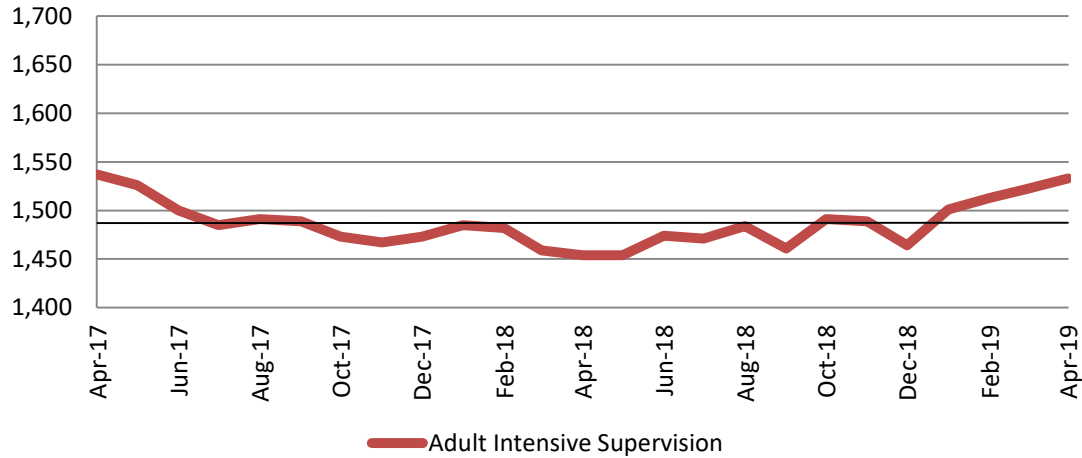
District Court Probation: Pre-Sentence Investigation April 2017 - present



April	2017	2018	2019
Carried Over	271	255	267
Assigned	211	194	208
Completed	169	190	209

Community Corrections

**Adult Intensive Supervision Probation (AISP):
ADP April 2017- present**



Year	April	April YTD Avg.
2017	1,537	1,601
2018	1,454	1,470
2019	1,533	1,517

**Adult Residential: ADP
April 2017 - present**

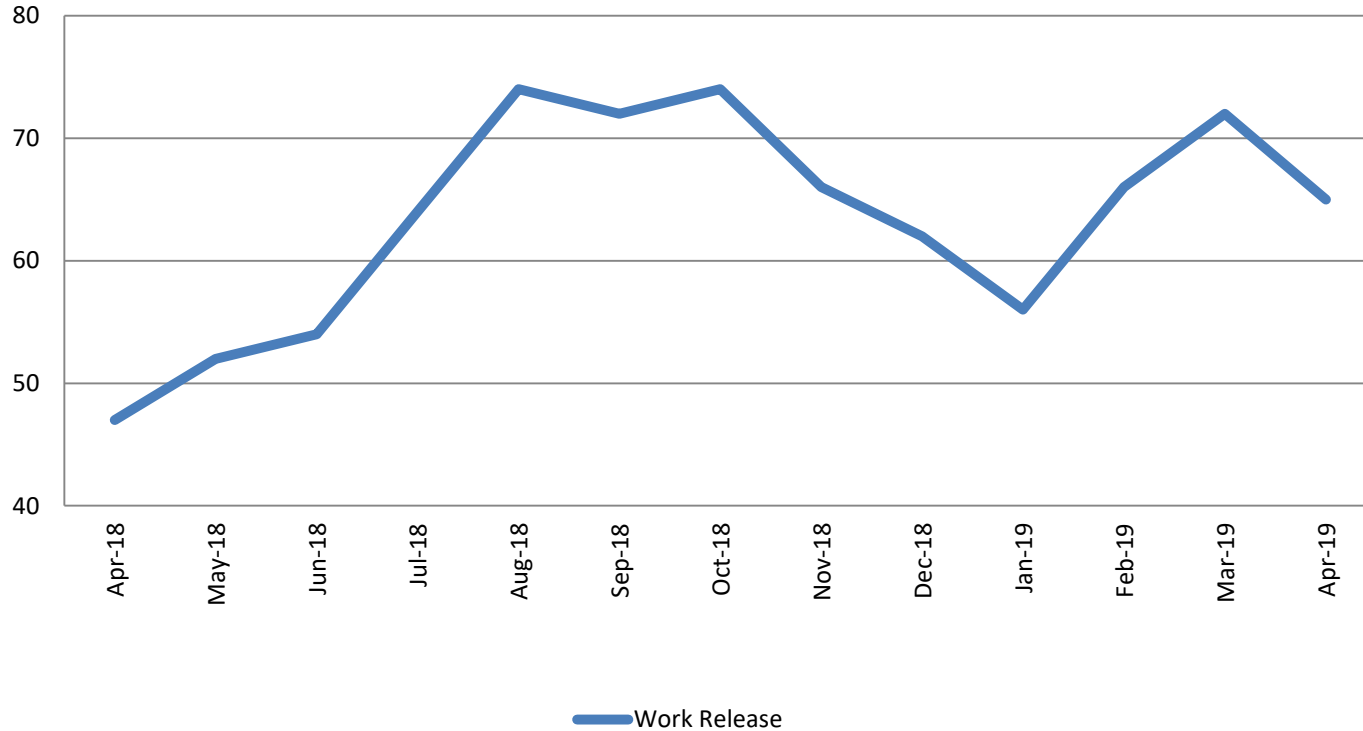


Year	April	April YTD Avg.
2017	54	62
2018	51	59
2019	67	65



Community Corrections

**Work Release: ADP
April 2018 - present**

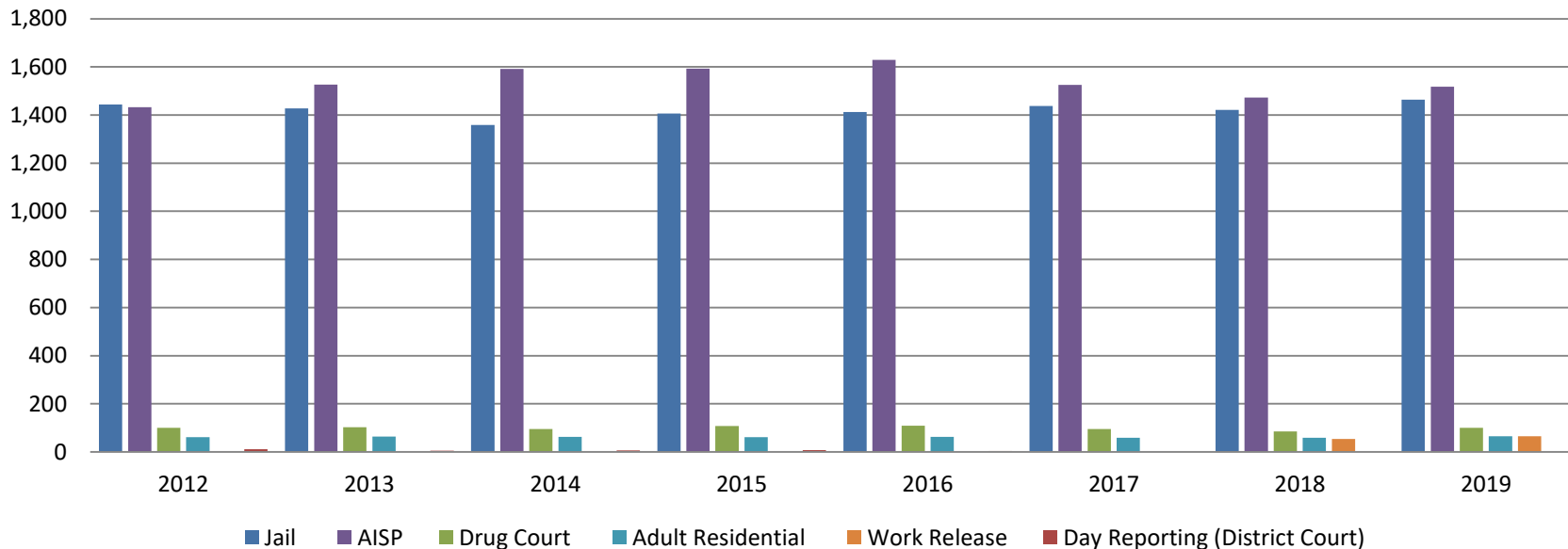


Month Year	Total	YTD Avg.
April 2018	47	34
April 2019	65	65



Correlation: Total & Sedgwick County Programs (Adult)

Total Annual ADP 2012-Present

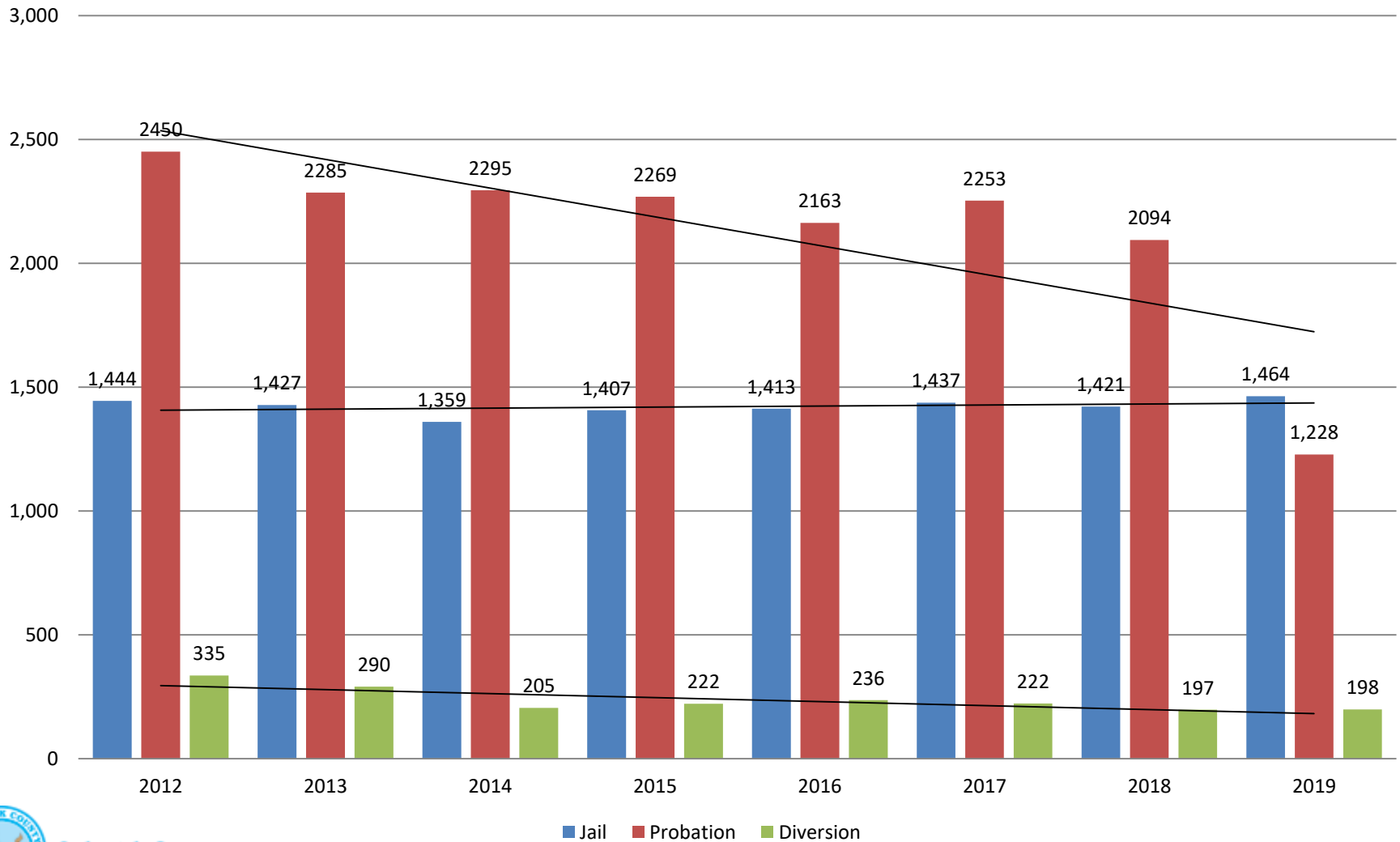


	2017	2018	2019
Jail	1,437	1,421	1,464
AISP	1,526	1,472	1,517
Drug Court	96	85	101
Adult Residential	59	59	65
Work Release	0	55	65
Day Reporting (DC)	0	0	0



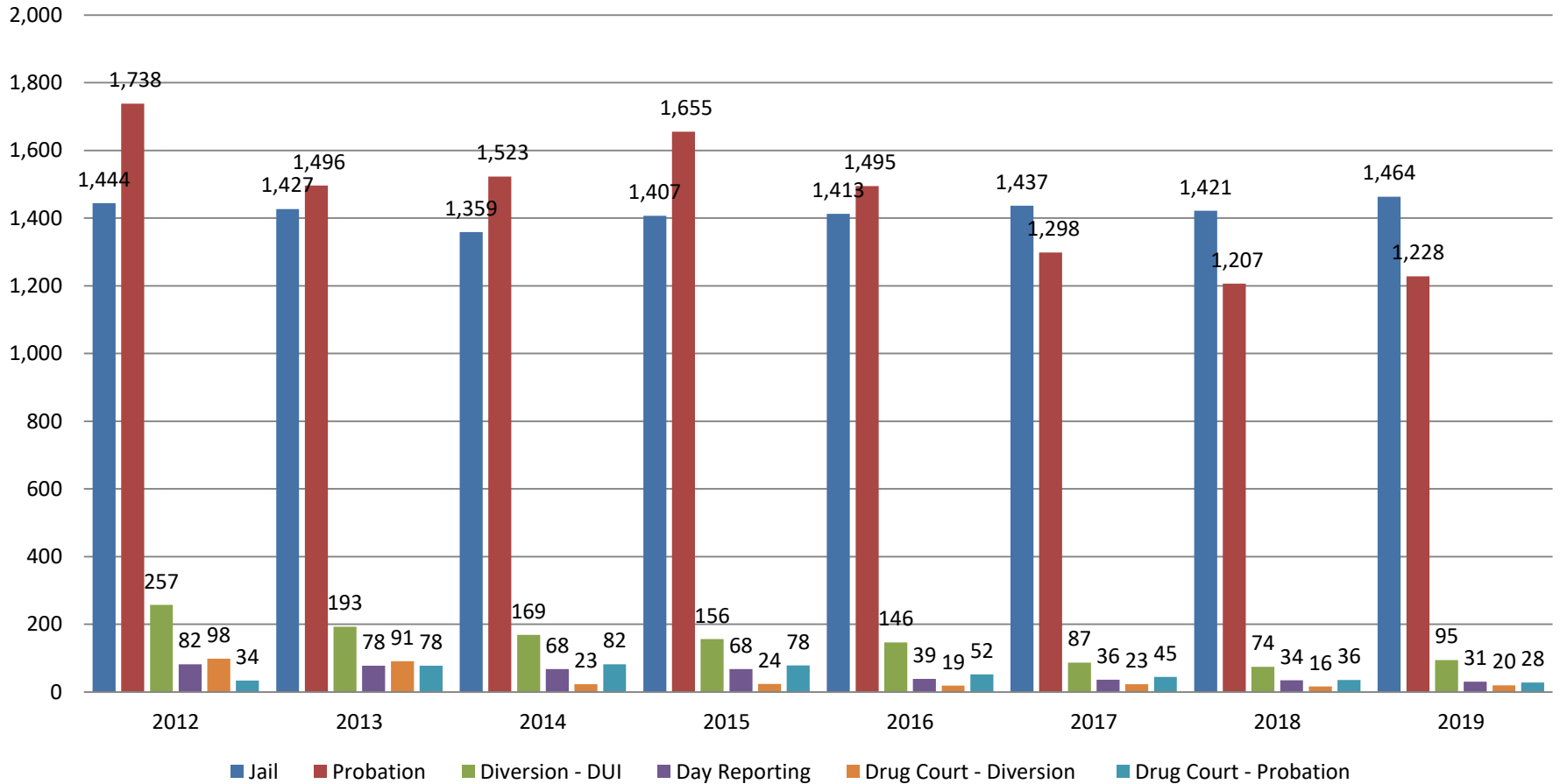
Correlation: Total & District Court Programs

Total Annual ADP: 2012 - Present



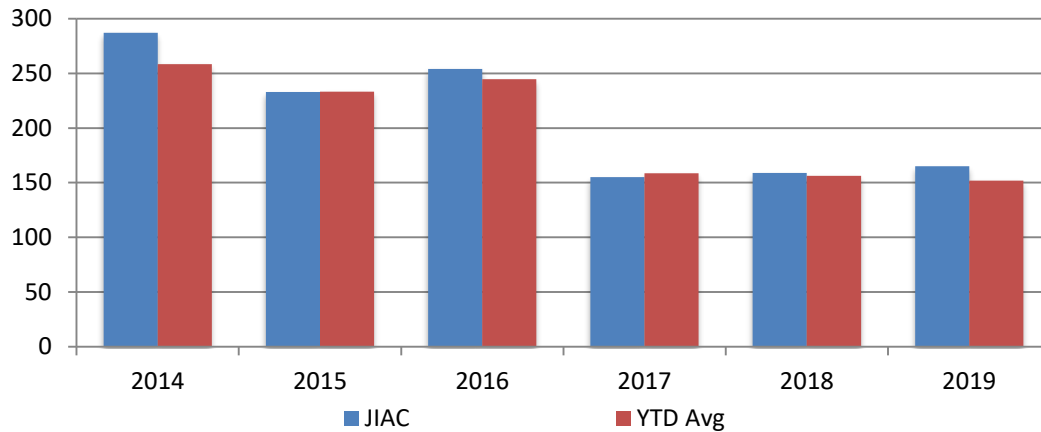
Correlation: Total & City of Wichita / Municipal Court Programs

Total Annual ADP: 2012 - present



Juvenile

JIAC Intakes
April 2014 - present

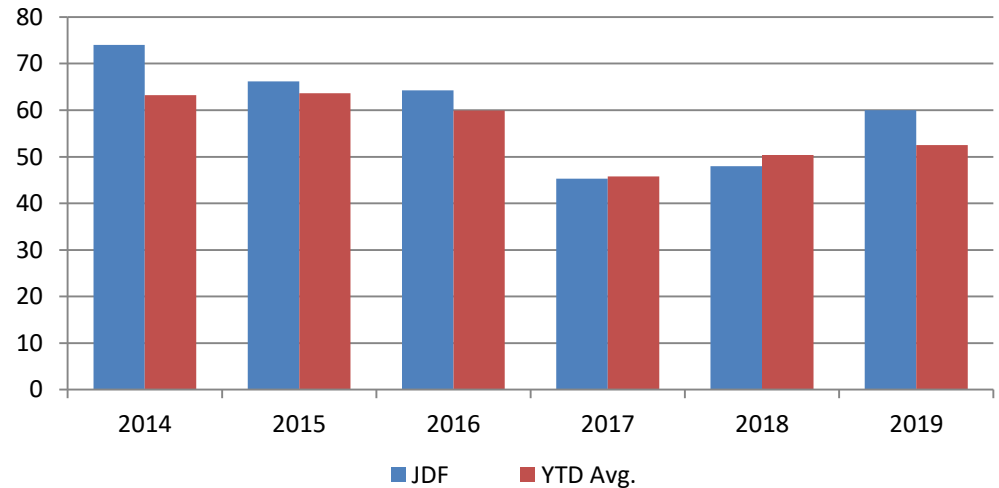


Year	April	April YTD Avg.
2014	287	258
2015	233	233
2016	254	245
2017	155	159
2018	159	156
2019	165	152

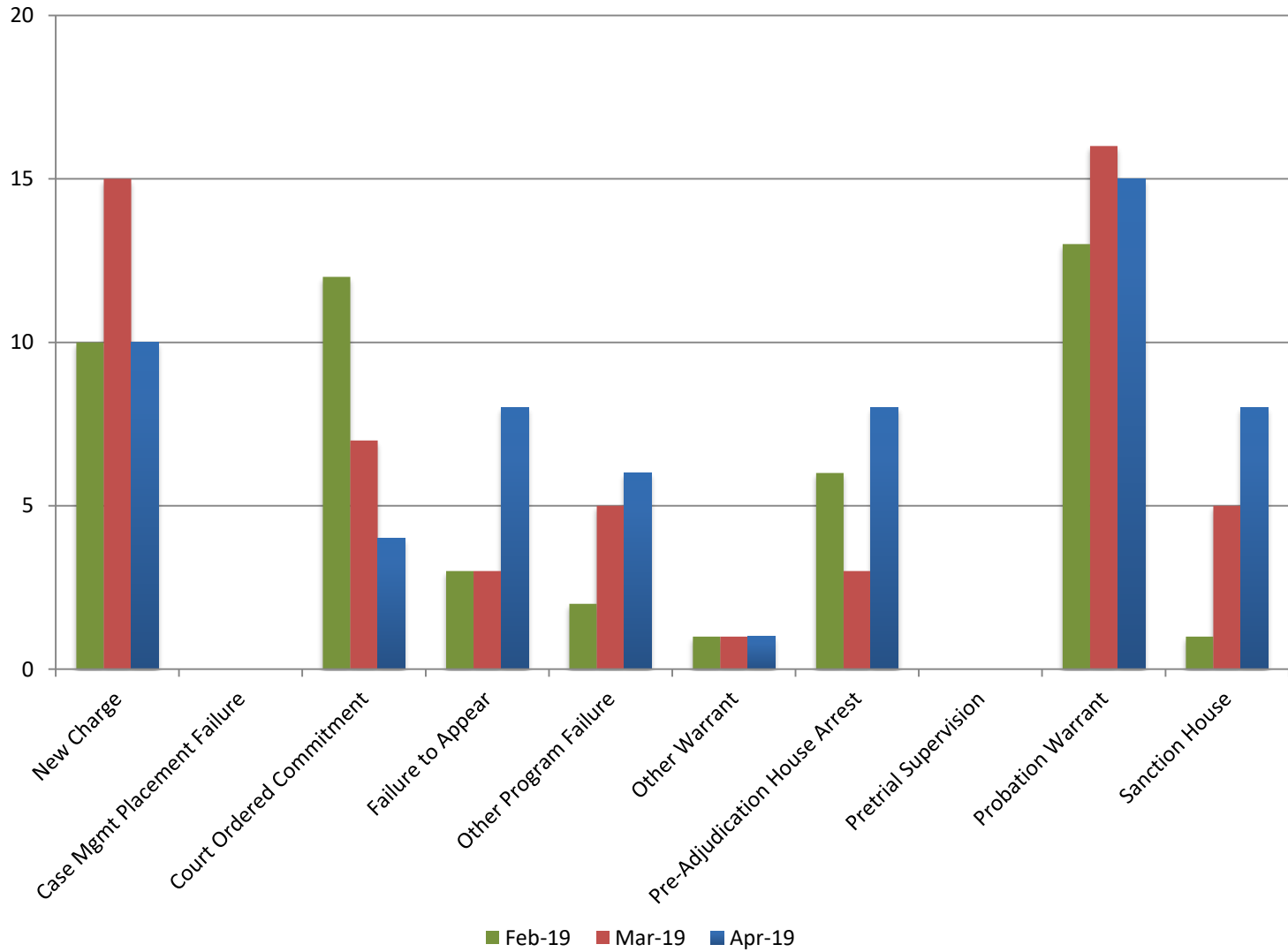
Year **April** **April YTD Avg.**

2014	74	63
2015	66	64
2016	64	60
2017	45	46
2018	48	50
2019	60	53

JDF ADP
April 2014 - present



Reason for JDF Admits



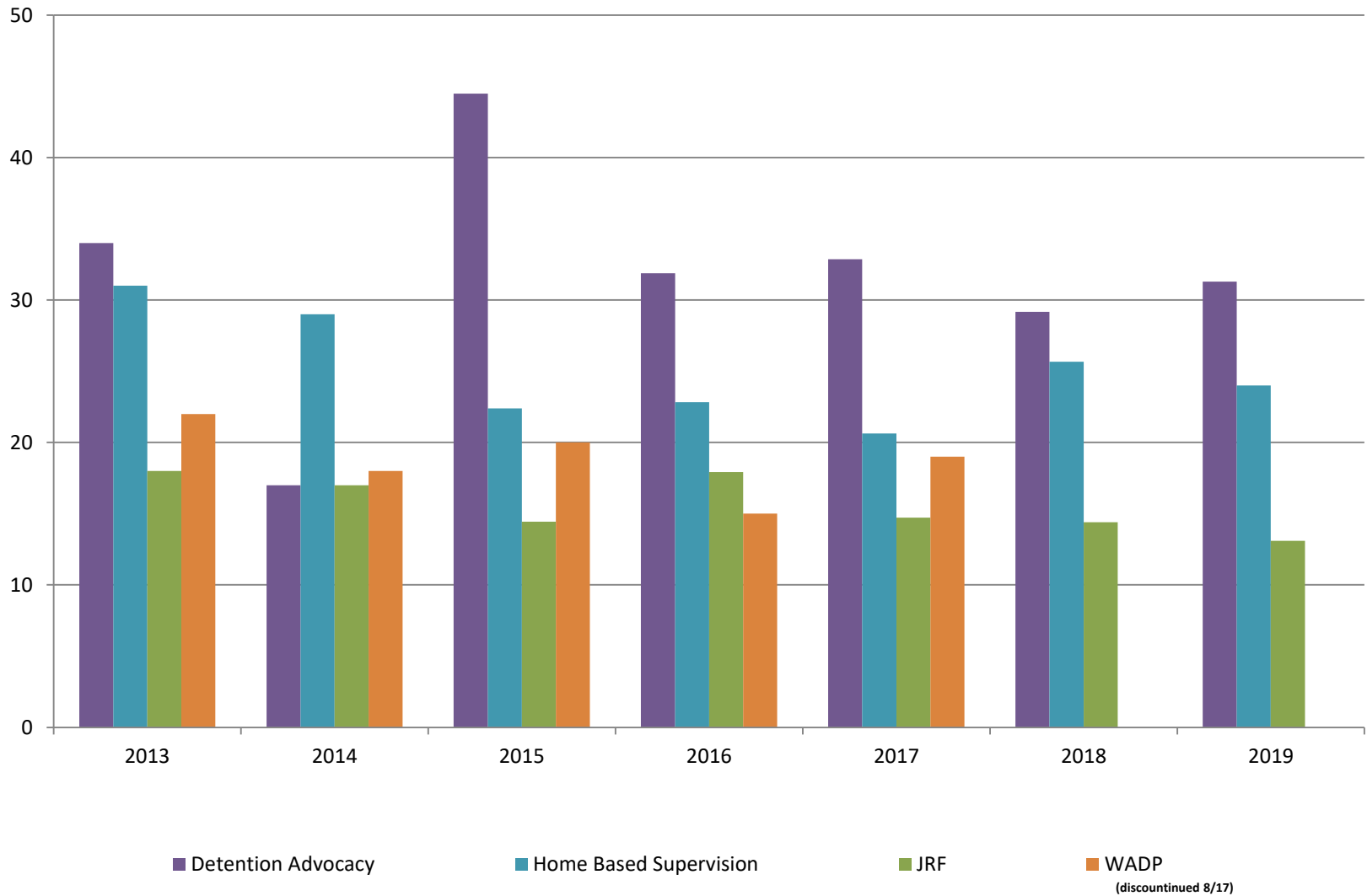
Reason for JDF Admits

Reason	April 2018	April 2019
New Charges	11	11
Case Management Placement Failures	0	0
Court Ordered Commitment	8	4
Failure to Appear	9	6
Other Program Failure	2	6
Other Warrant	1	1
Pre-Adjudication House Arrest	3	8
Pretrial Supervision	0	0
Probation Warrant	9	15
Sanction House	6	8



Juvenile Detention Alternatives

ADP: April 2013- Present



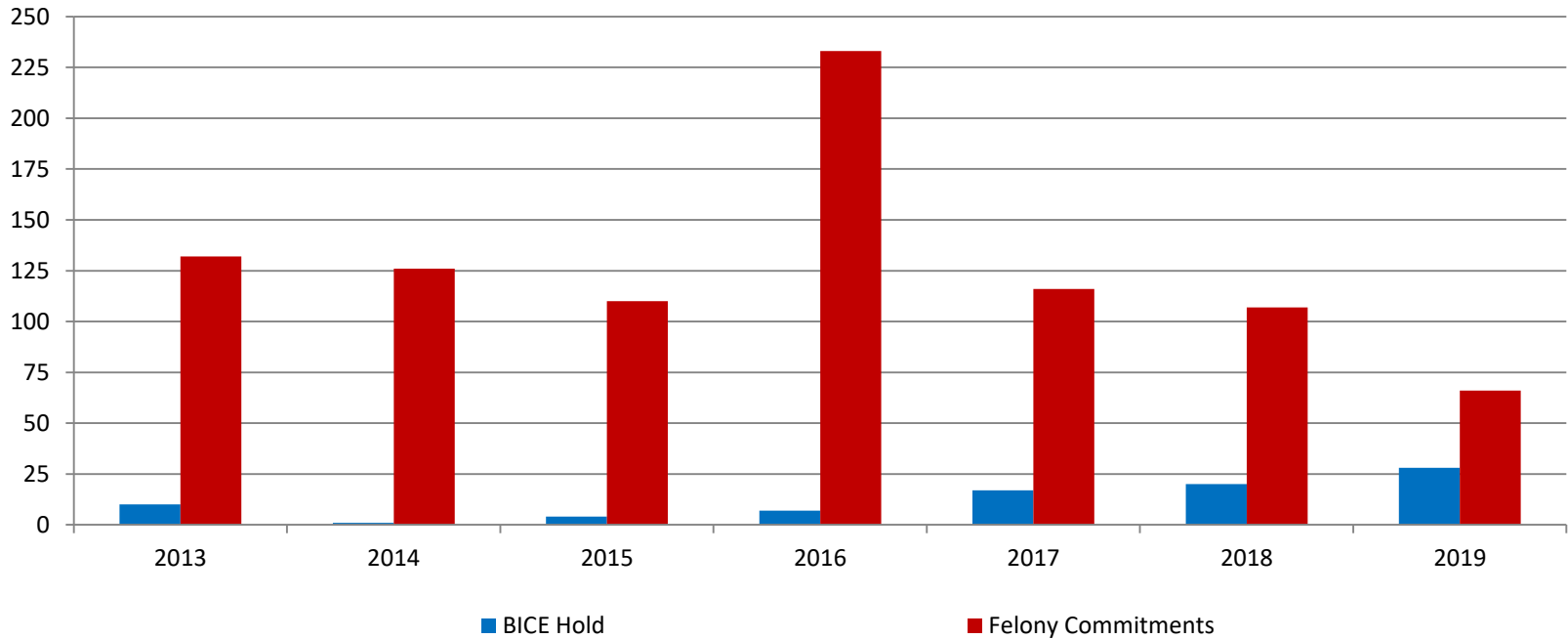
Juvenile Detention Services

April ADP	2016	2017	2018	2019
Juvenile Detention Facility	64	45	48	60
Juvenile Residential Facility	18	15	14	13
Home Based Supervision	23	21	26	24
Detention Advocacy Case Management Services	32	33	29	31
Weekend Alternative Detention Program (total)	15	19	0	N/A

April YTD AVERAGE	2016	2017	2018	2019
Juvenile Detention Facility	60	46	50	53
Juvenile Residential Facility	16	14	13	13
Home Based Supervision	26	24	28	28
Detention Advocacy Case Management Services	36	36	32	29
Weekend Alternative Detention Program	16	17	0	N/A

Monthly Jail Snapshot: April 30, 2019

Snapshots April 2013 - Present

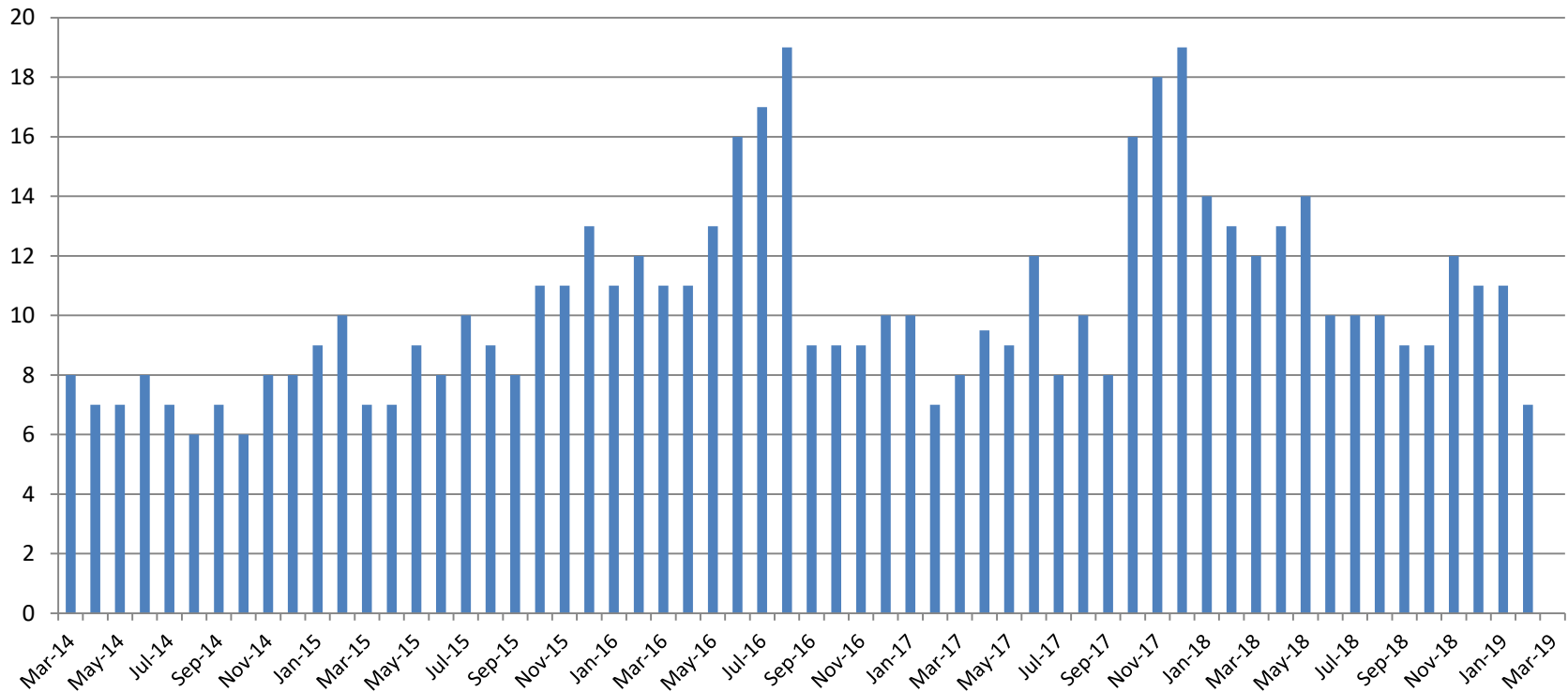


BICE Hold	2013	2014	2015	2016	2017	2018	2019
April	10	1	4	7	17	20	28

Felony Commitments	2013	2014	2015	2016	2017	2018	2019
April	132	126	110	233	116	107	66



Journal Entry Completion (Average Days) March 2014-Present



March	2014	2015	2016	2017	2018	2019
Avg. Days	8	7	11	9.5	12	No Data
YTD Avg.	8	9	11	8	13	9

