

Criminal Justice Coordinating Council

Population Report & Program Trends

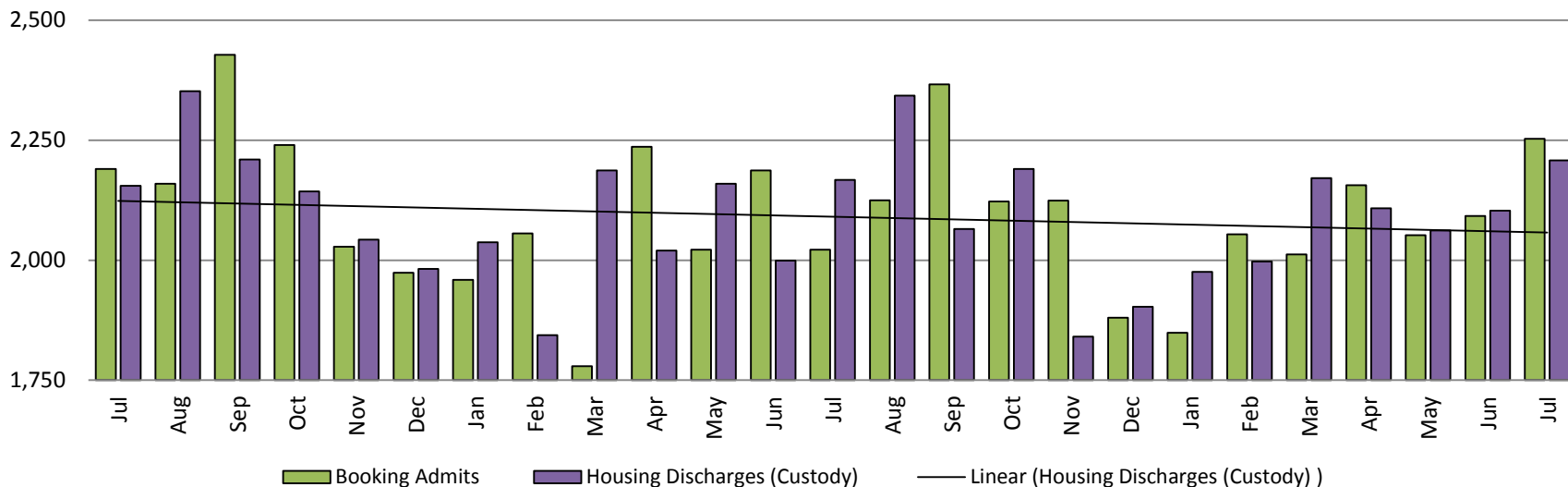
August 2019



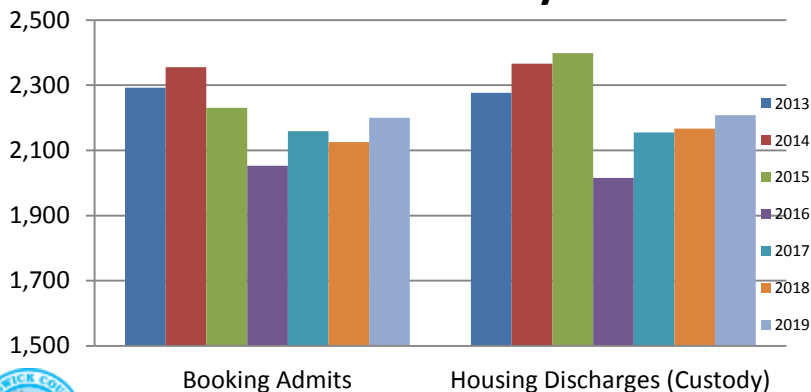
Sedgwick County...
working for you

Detention Facility

Booking Admits & Housing Discharges from Custody July 2017-Present



Bookings Year over Year: Month of July



Bookings July

Housing Discharges July

2017: 2,159

2017: 2,155

2018: 2,125

2018: 2,167

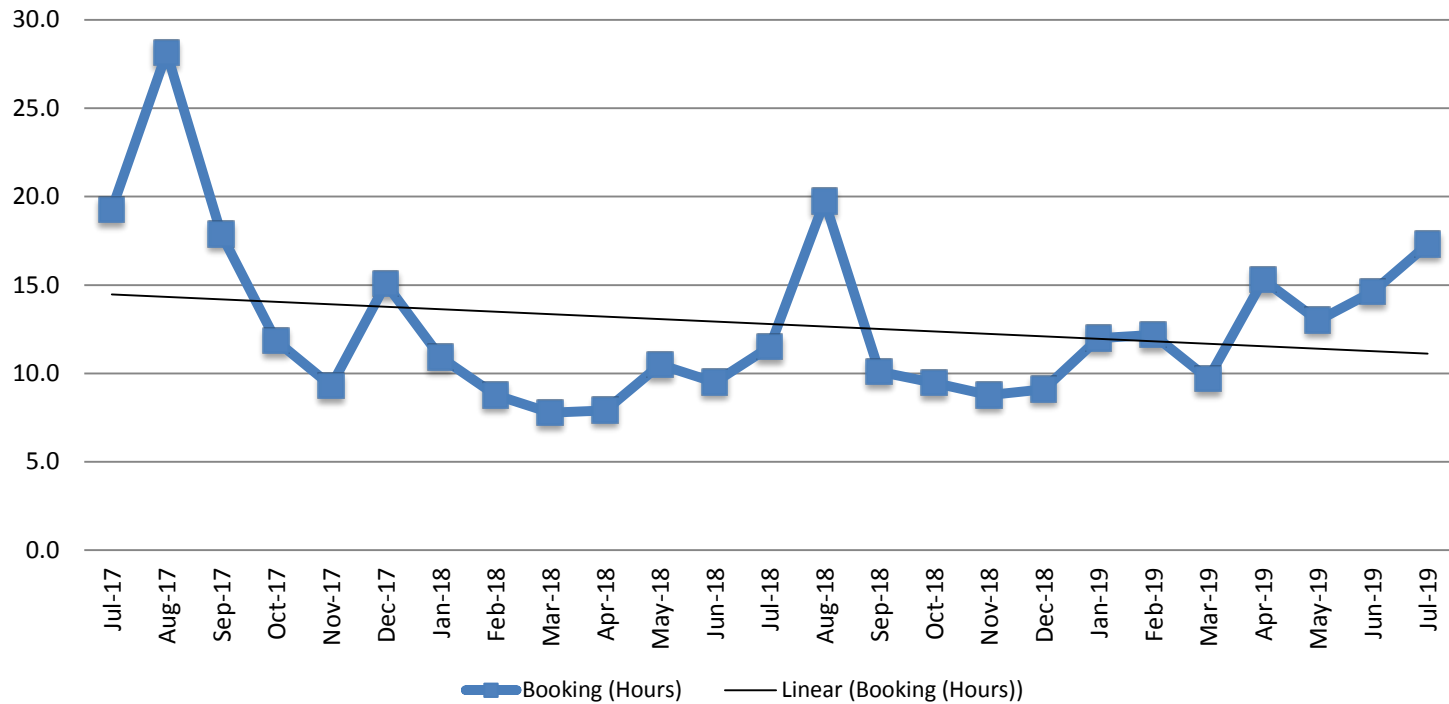
2019: 2,200

2019: 2,208



Sedgwick County...
working for you

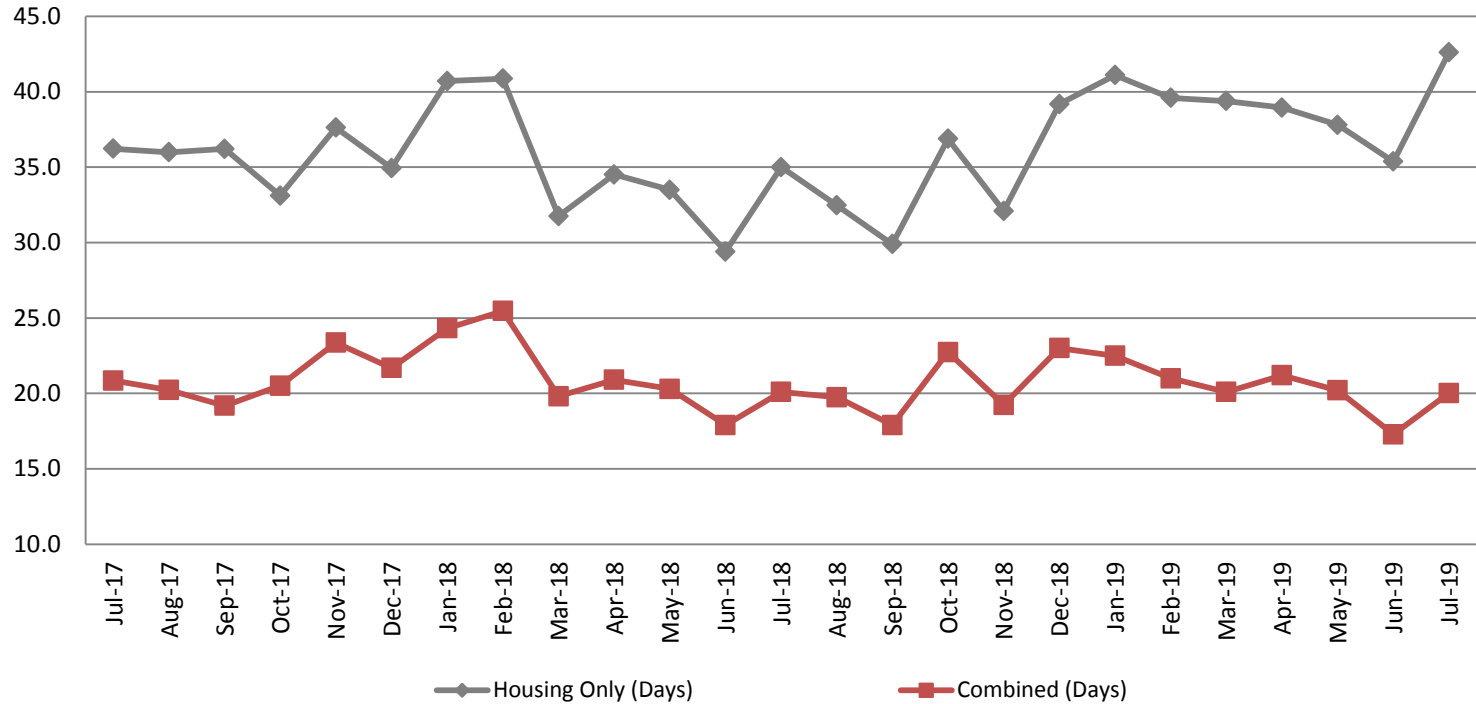
Average Length of Stay: Booking (Hours) July 2017 - Present



July	July YTD Average
2017: 19.2	2017: 16.3
2018: 11.5	2018: 9.6
2019: 17.3	2019: 13.4



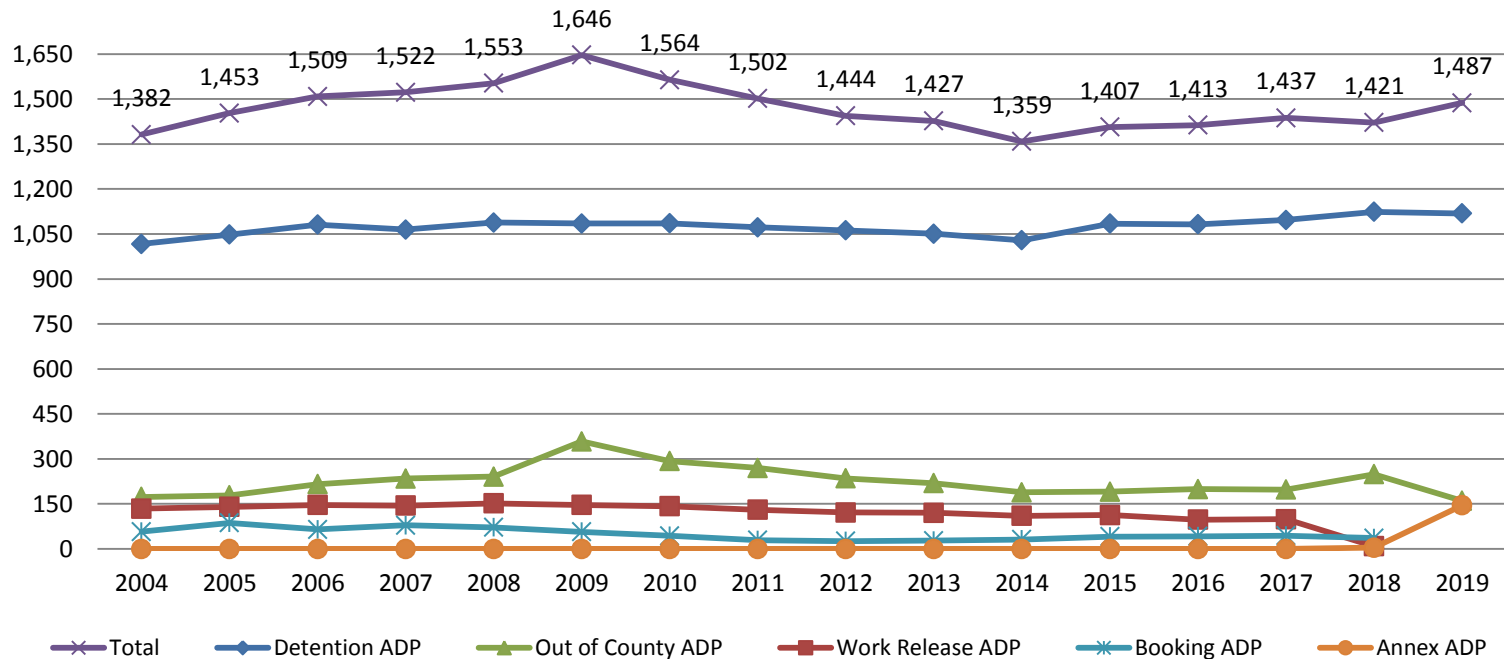
Average Length of Stay: Housing & Combined (Days) July 2017 - Present



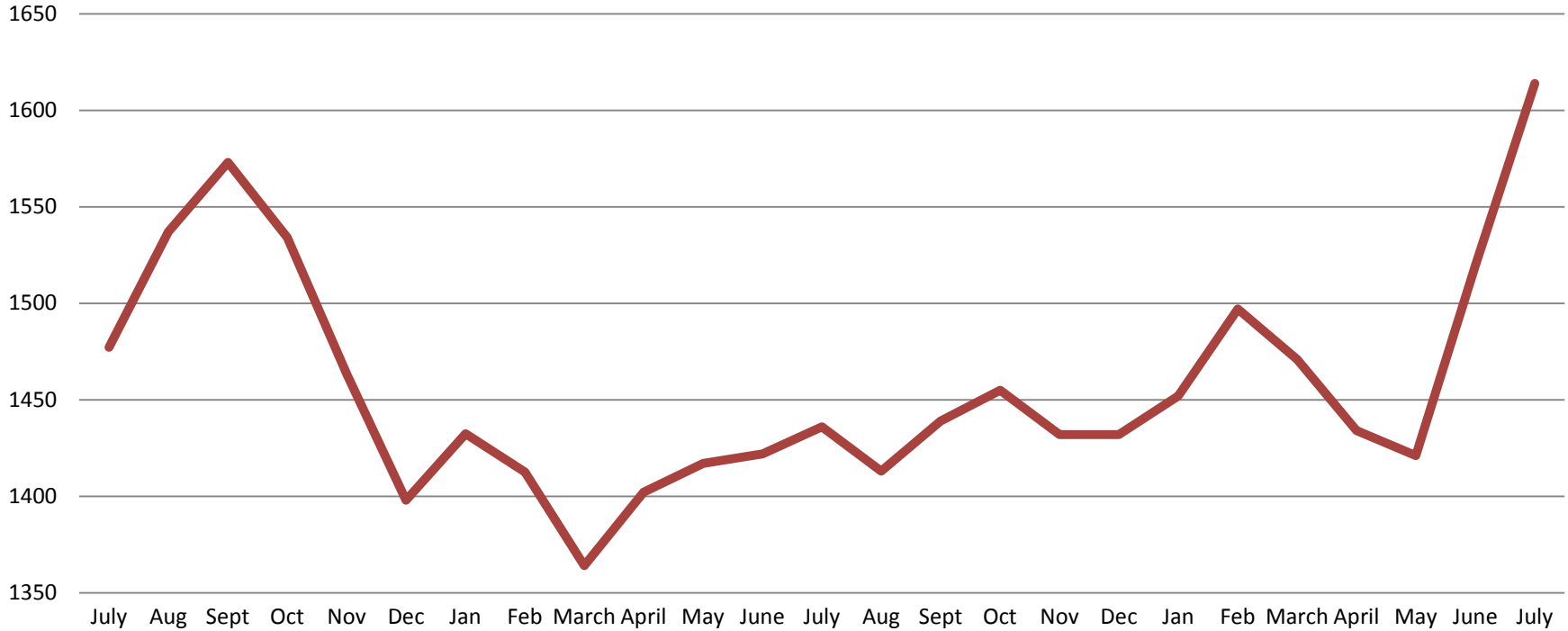
Month Year	Housing Only	Housing YTD AVG	Combined Days	Combined YTD AVG
July 2017	36.2	34.9	20.9	20.2
July 2018	35.0	35.1	20.1	21.3
July 2019	42.6	39.3	20.0	20.3

Jail: Annual Average Daily Population (ADP)

TRENDS: Booking, Detention, Work Release, & Out of County
Annual ADP: 2004 - present

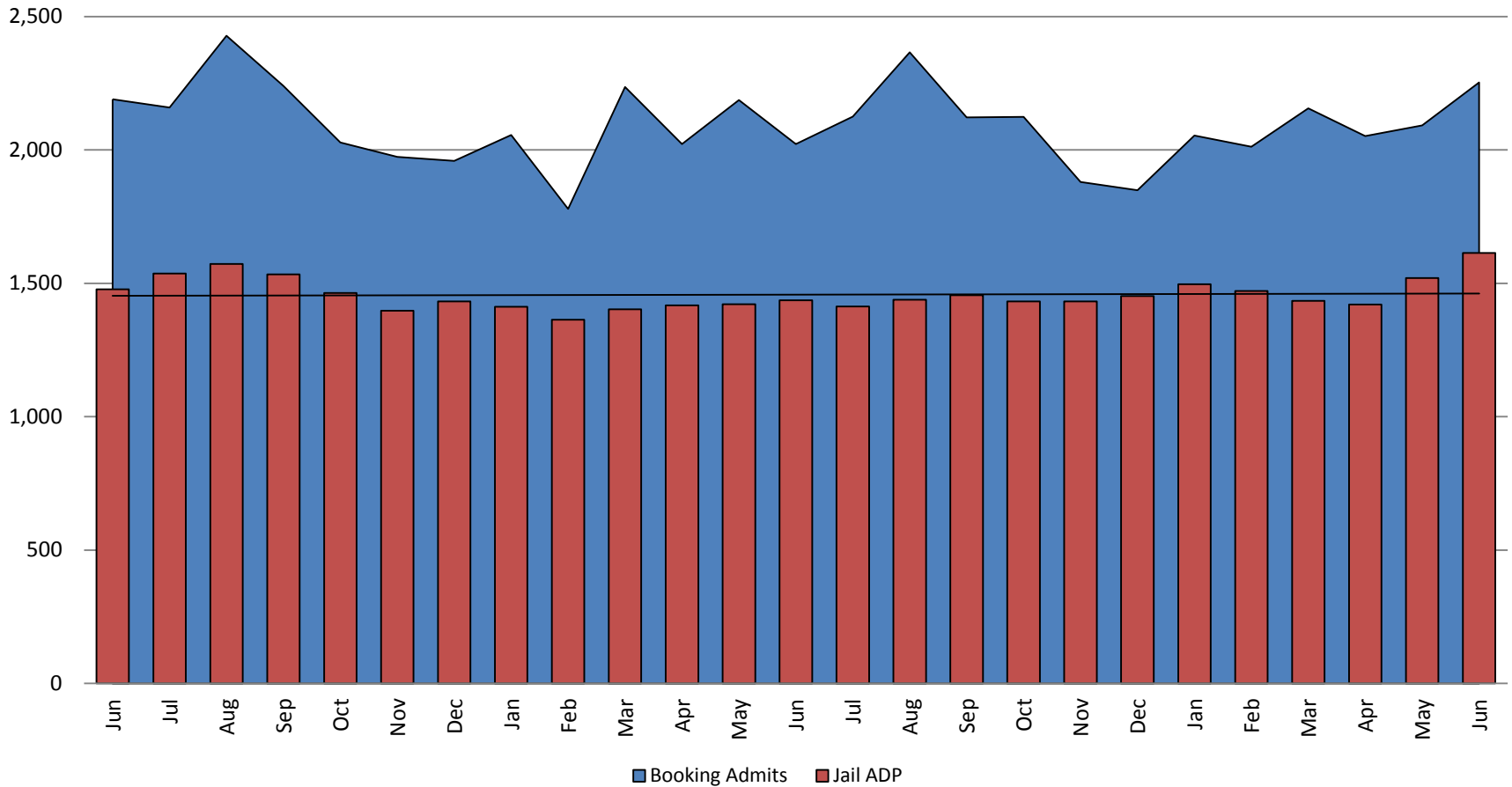


TOTAL MONTHLY ADP: JAIL (Booking, Detention Facility, Annex, & Out of County) July 2017 - present

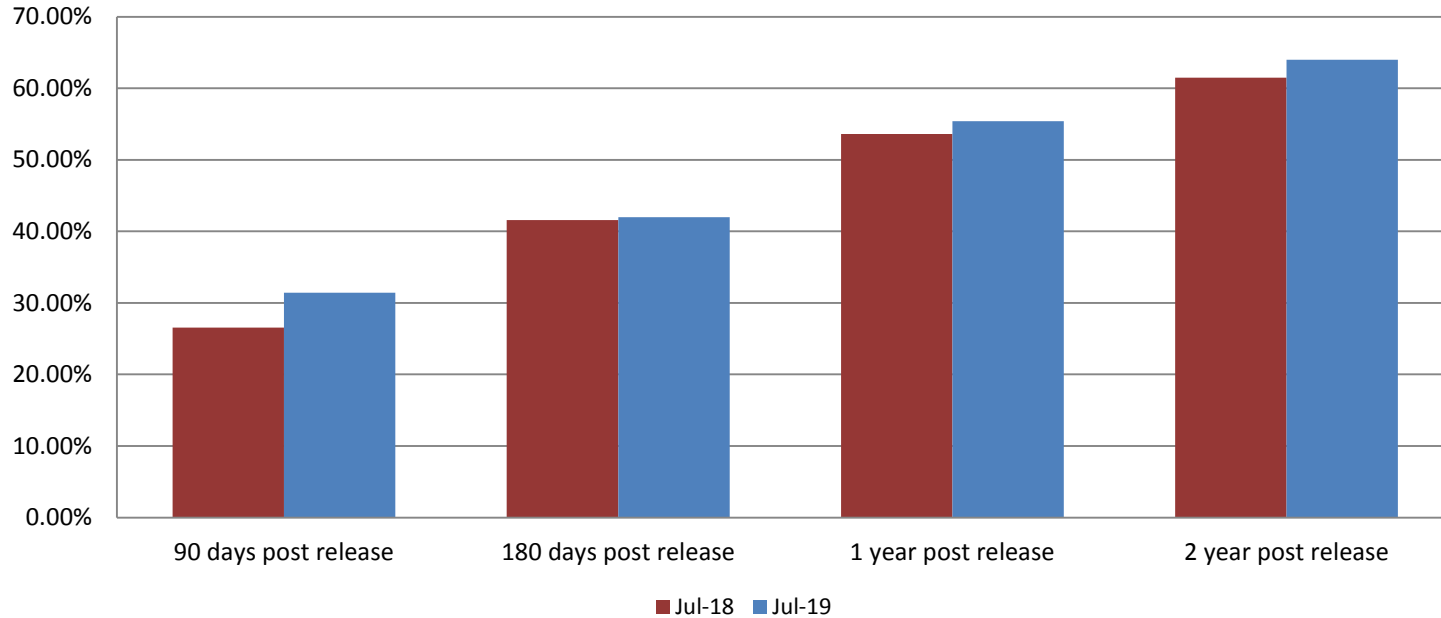


July 2017	July 2018	July 2019
1,477	1,436	1,612

Booking Admits & Total Monthly ADP (Jail): July 2017 - present



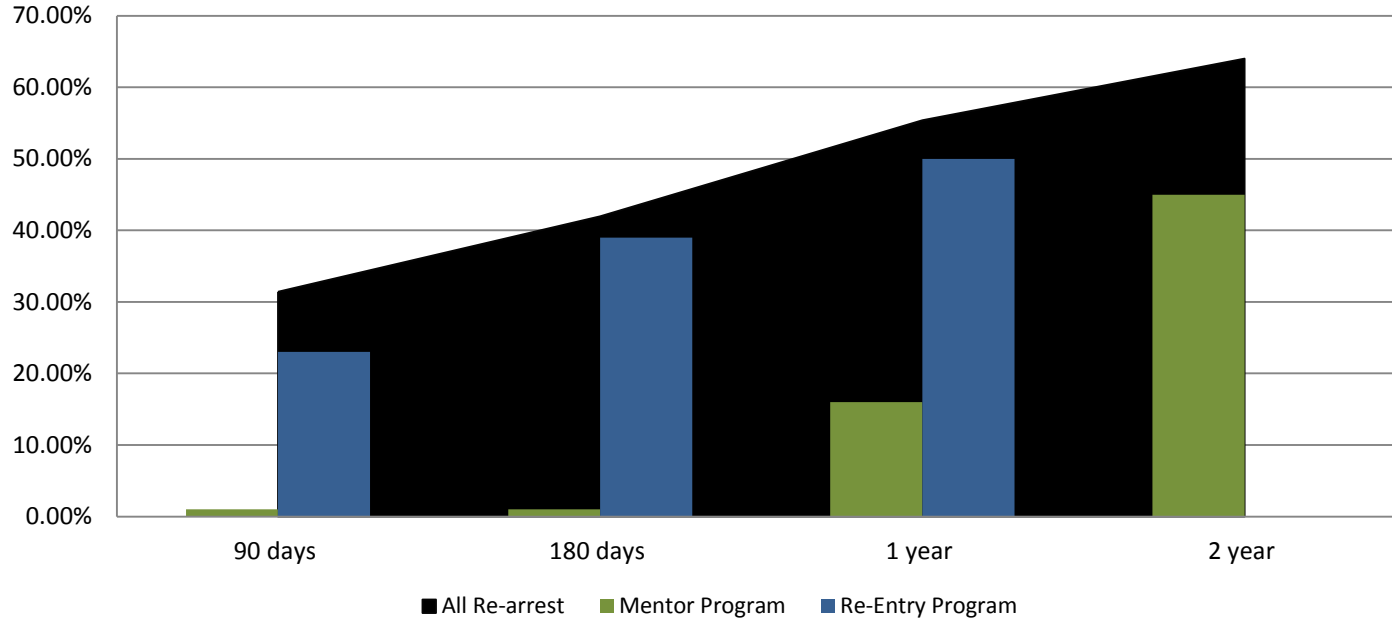
Percent of released inmates rearrested July



Month Year	90 Days	180 Days	1 Year	2 Years
July 2018	26.55%	41.60%	53.64%	61.50%
July 2019	31.42%	41.97%	55.40%	64.01%

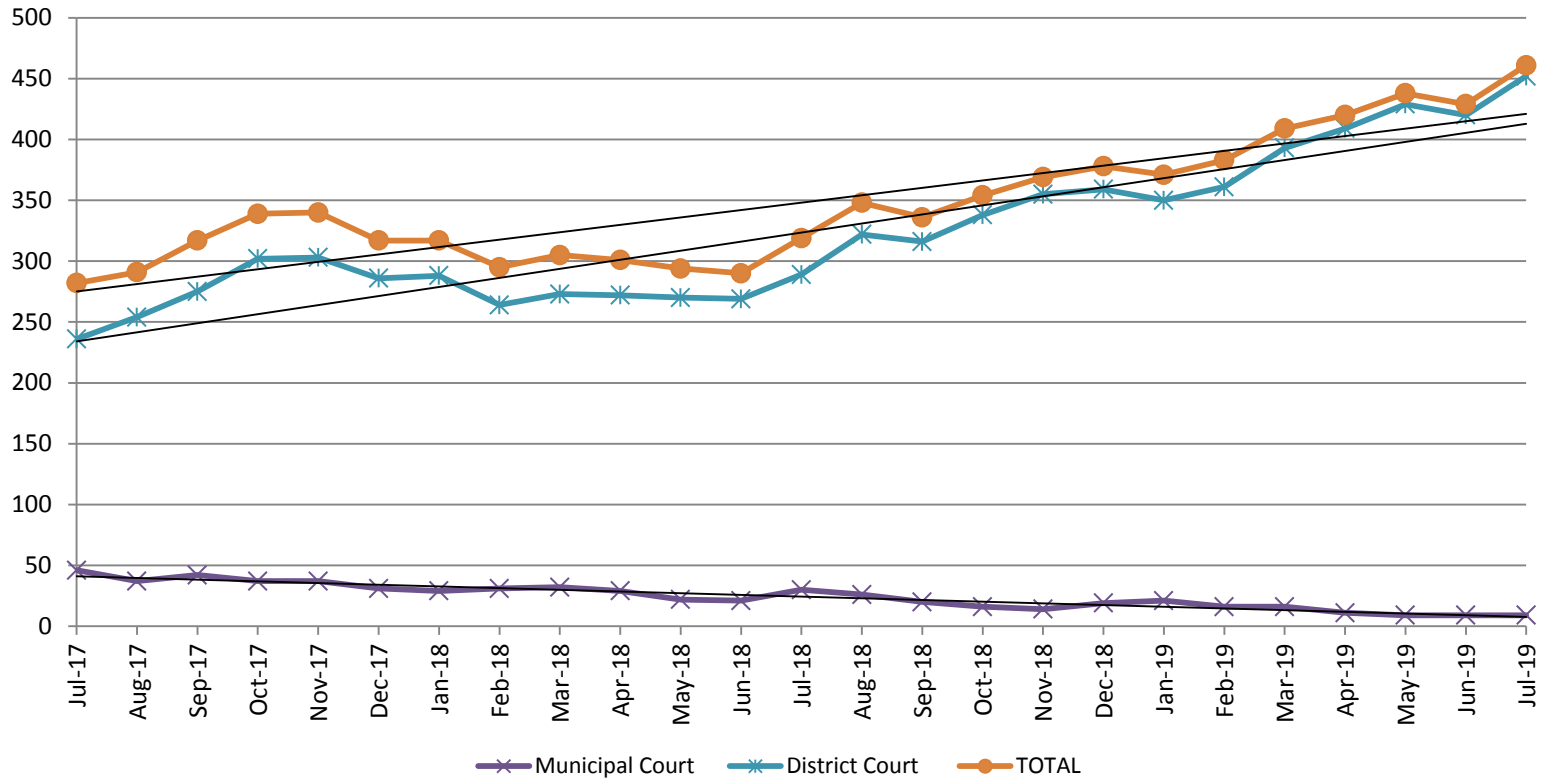


Recidivism by Programs July 2019



July 2019	90 Days	180 Days	1 year	2 years
All Re-arrests	31.42%	41.97%	55.40%	64.01%
Mentor Program	1%	1%	16%	45%
Re-Entry Program	23%	39%	50%	N/A

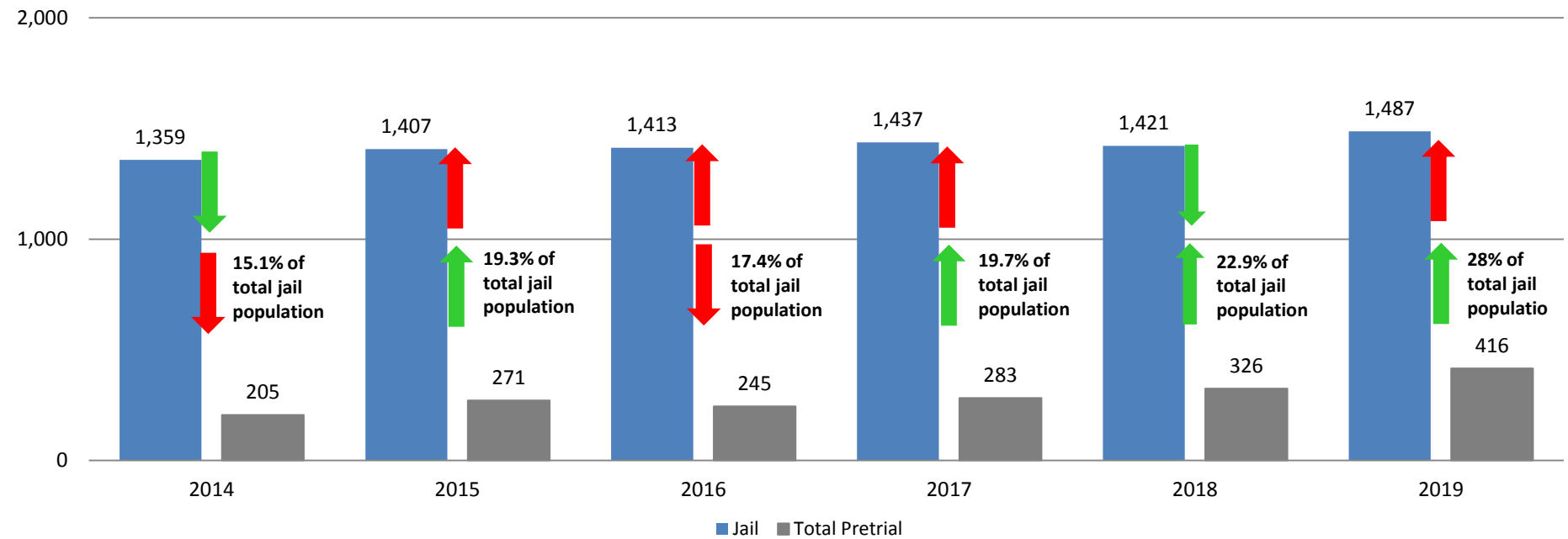
Pretrial Services Program (PSP) Monthly ADP: July 2017 - Present



July	2017 ADP	2018 ADP	2019 ADP	2017 YTD Avg.	2018 YTD Avg.	2019 YTD Avg.
Muni. Court	46	30	9	35	28	13
Dist. Court	236	289	452	221	275	402
Total	282	319	461	256	303	416

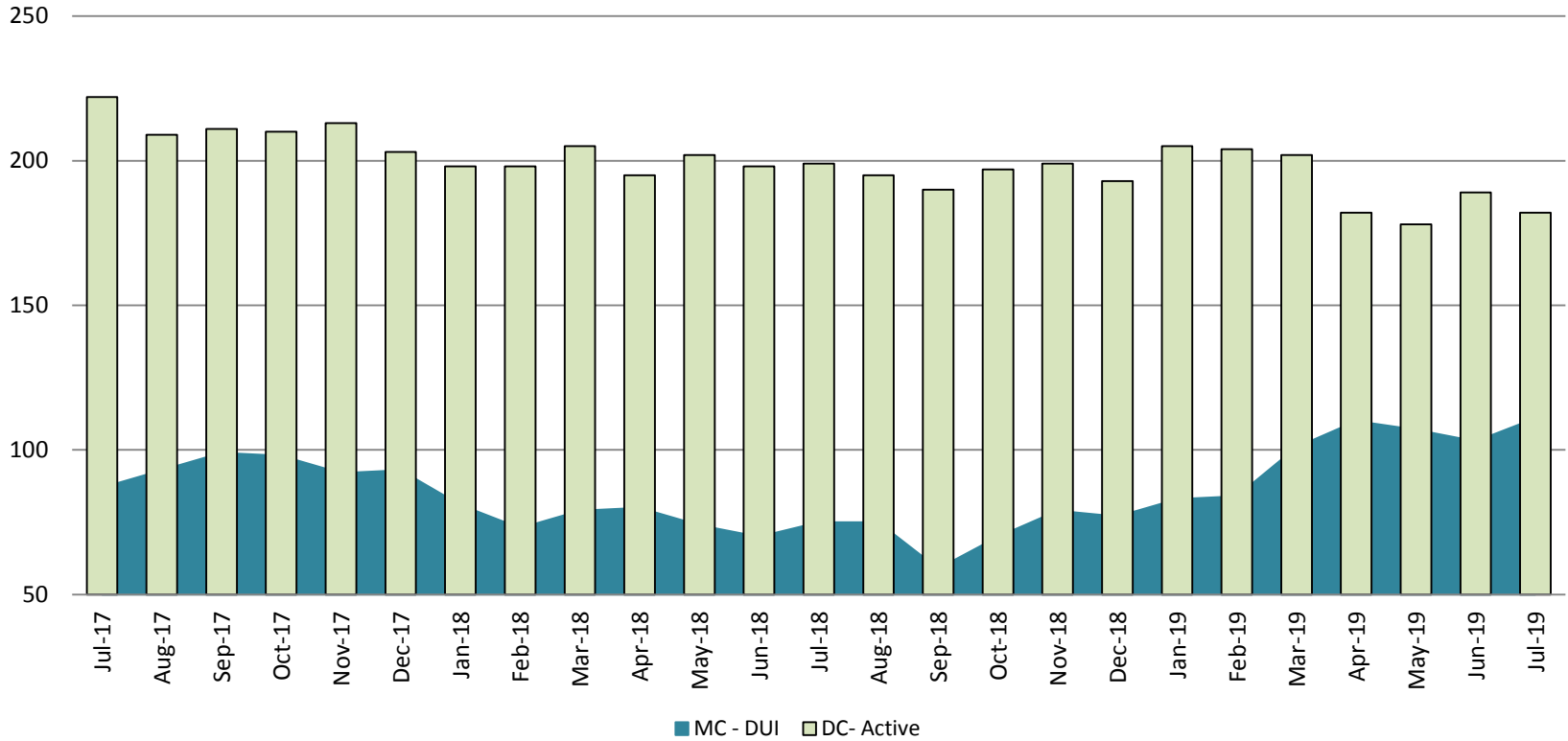
Correlation: Total & PSP

Total Annual ADP: 2014 - Present



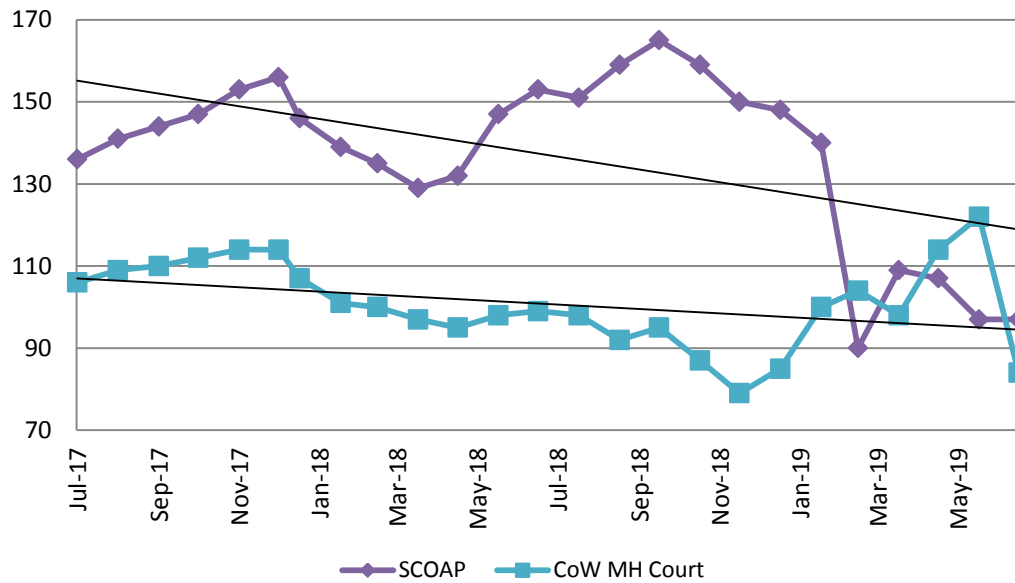
Diversion - Active Caseload

July 2017- Present

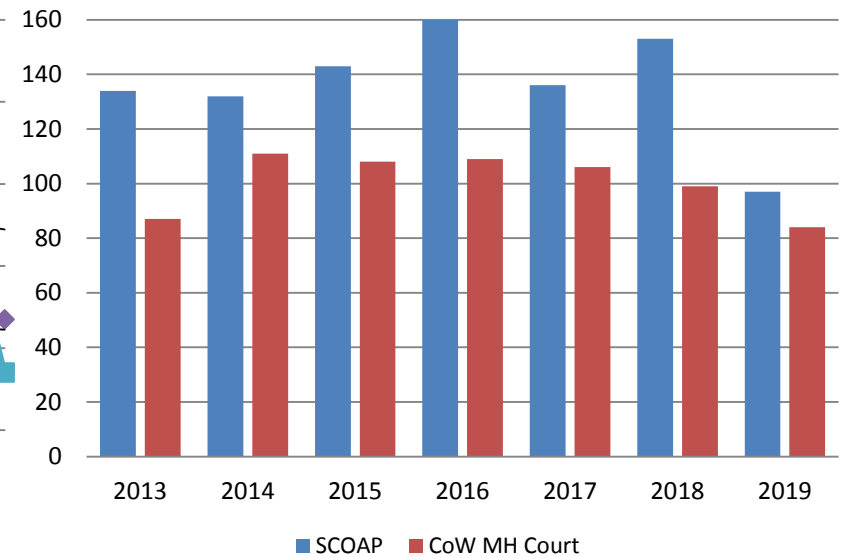


July	2017	2018	2019	2017 YTD Avg.	2018 YTD Avg.	2019 YTD Avg.
Muni. Court- DUI	87	75	111	82	76	100
Dist. Court- Active	222	199	182	231	199	192

Mental Health - ADP July 2017 - present

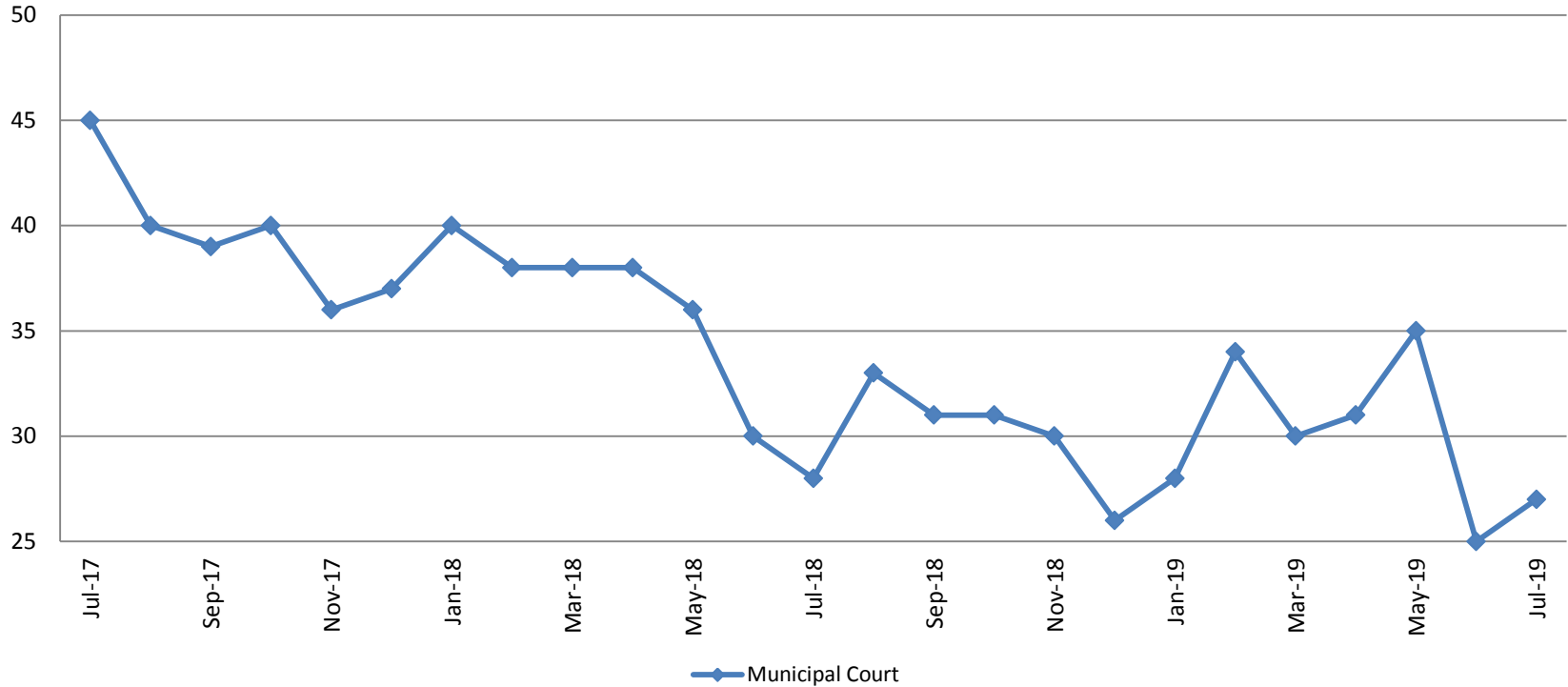


Mental Health ADP Year over Year- July



July	2017 ADP	2018 ADP	2019 ADP	2017 YTD Avg.	2018 YTD Avg.	2019 YTD Avg.
SCOAP	136	153	97	150	140	113
MH Court	106	99	84	119	100	101

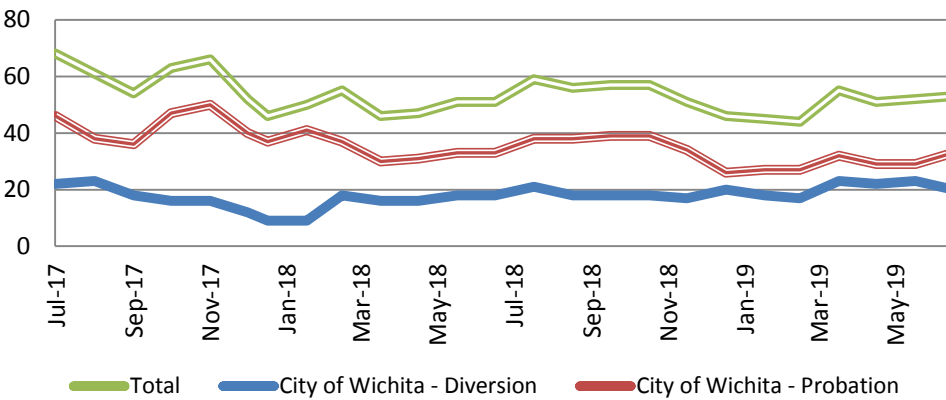
Day Reporting - Active Caseload July 2017 - Present



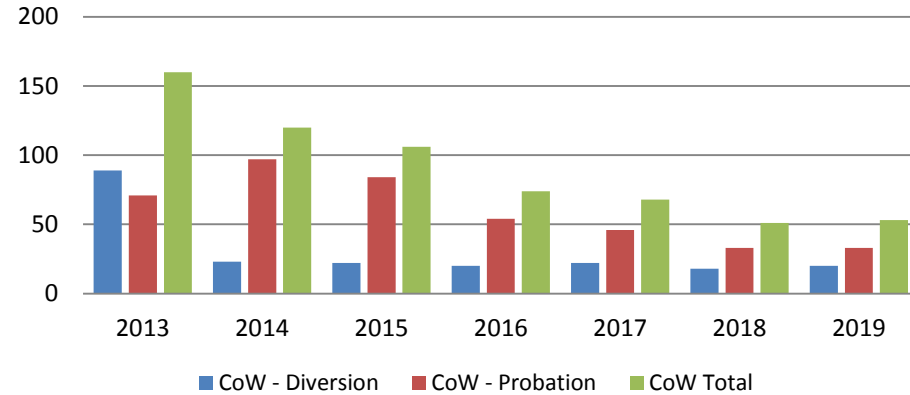
July	2014	2015	2016	2017	2018	2019
Muni. Court	64	68	40	45	28	27
Muni. Court YTD Avg.	75	72	46	35	35	30



Drug Court - City of Wichita ADP: July 2017 - present



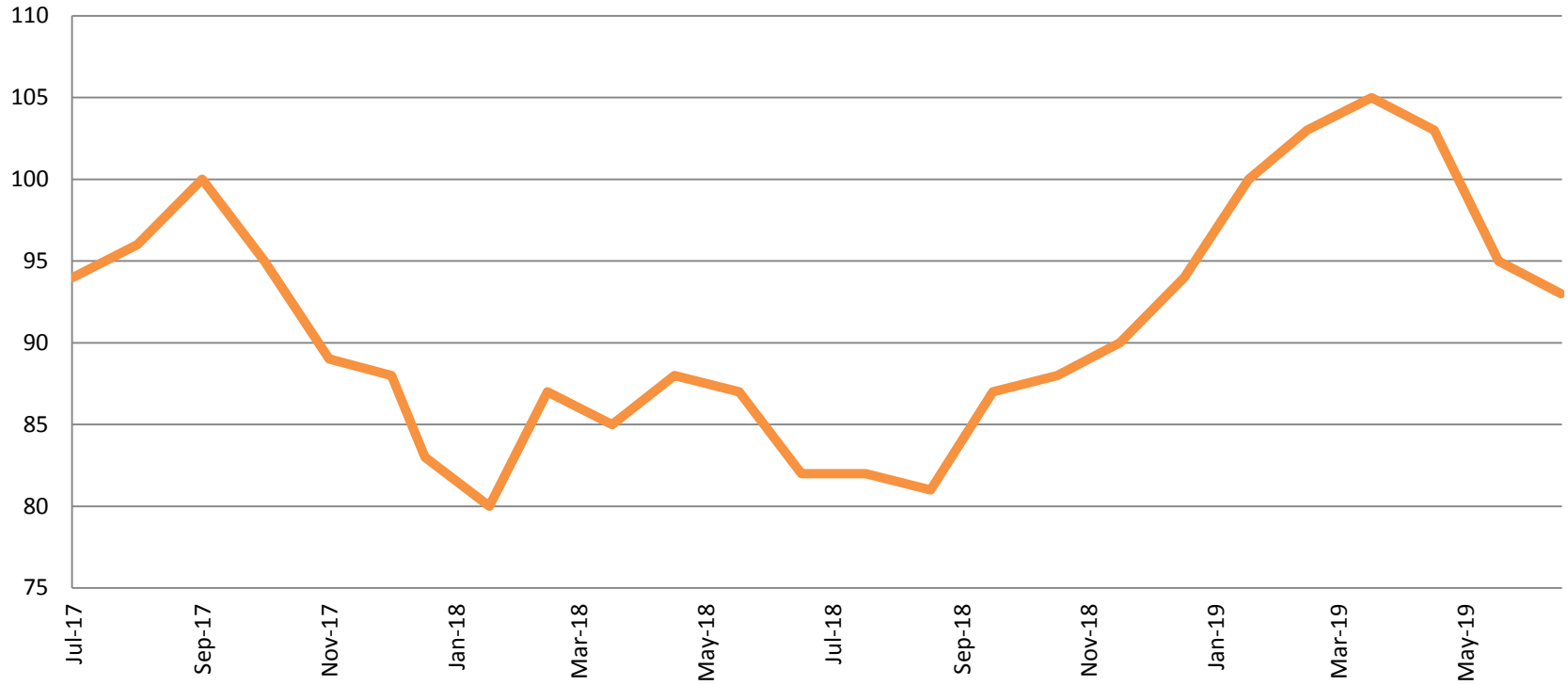
Drug Court- City of Wichita Year over Year - July



July	2017	2018	2019
Diversion	22	18	20
Probation	46	33	33
Total	68	51	53



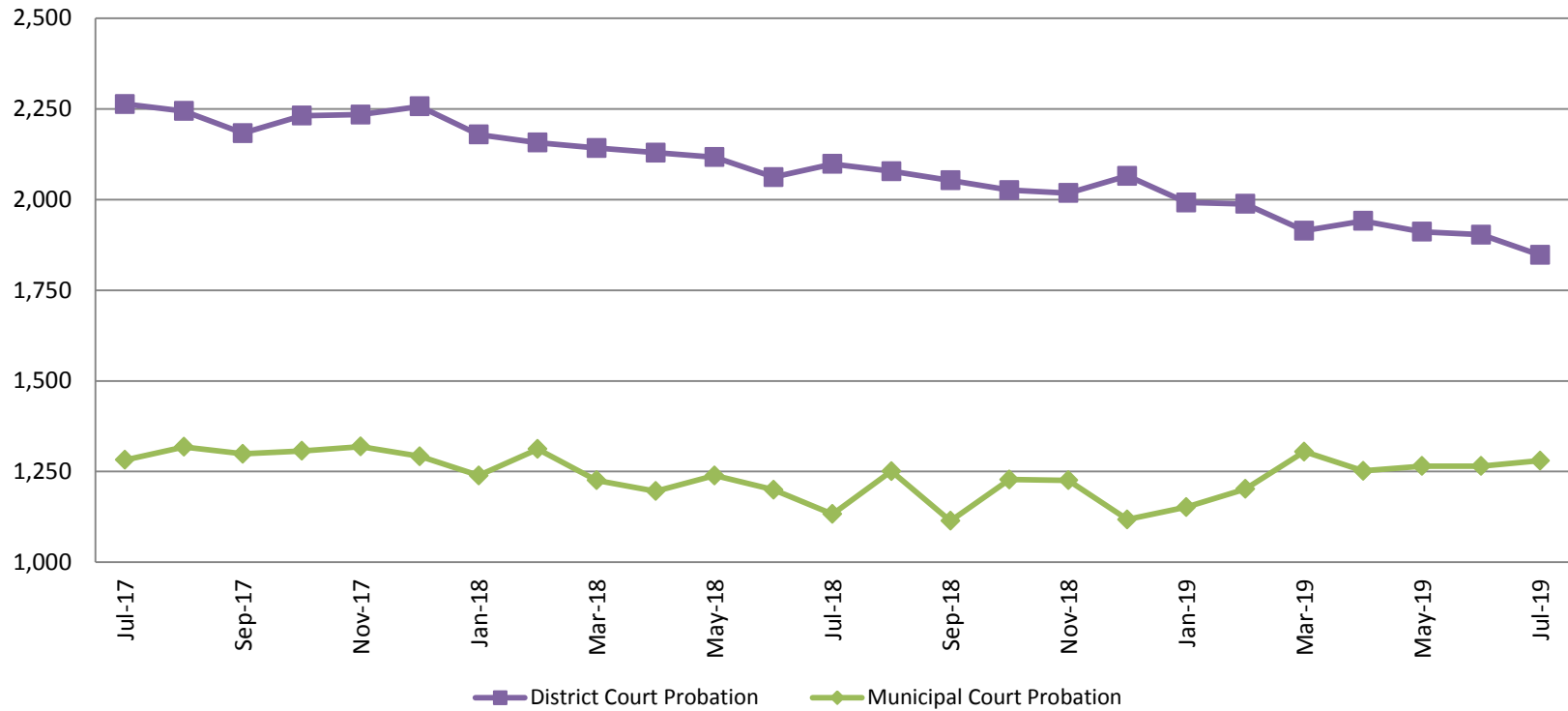
Drug Court - Sedgwick County ADP: July 2017 - present



July	2017	2018	2019
Sedg. Co. ADP	94	82	93
YTD Avg.	97	85	99



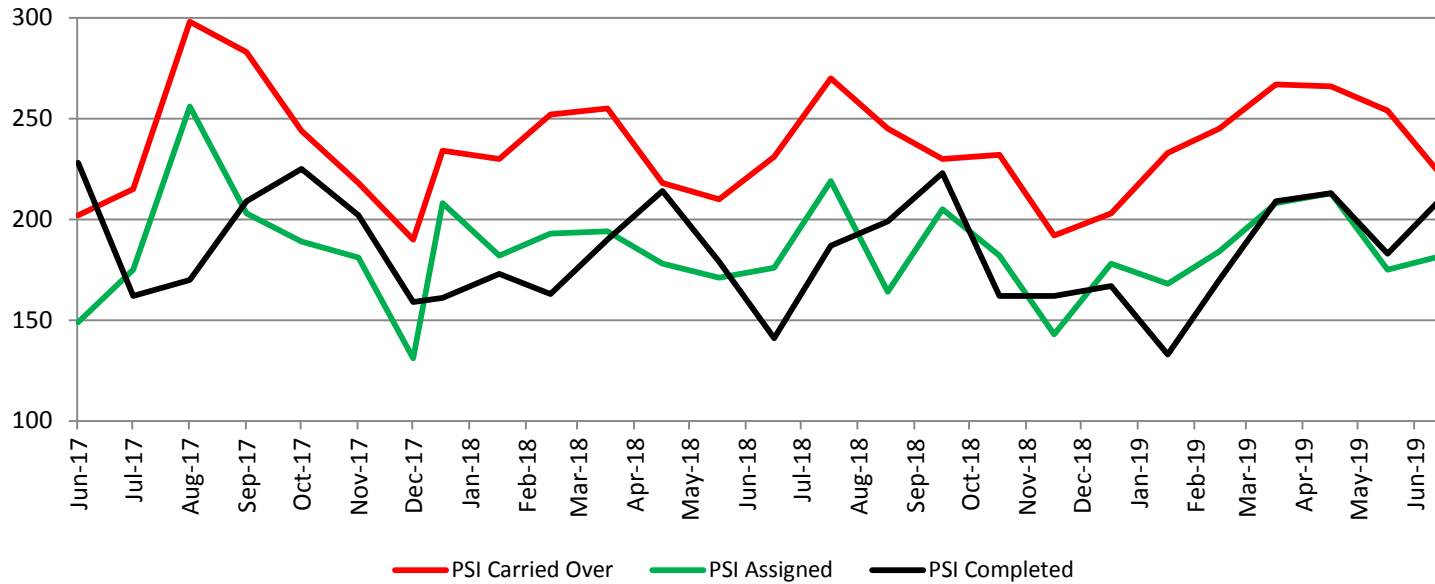
Probation - Active Caseloads July 2017 - present



July	2017	2018	2019	2017 YTD Avg.	2018 YTD Avg.	2019 YTD Avg.
Dist. Court Probation	2,263	2,098	1,847	2,269	2,126	1,928
Muni. Court Probation	1,282	1,133	1,280	1,292	1,221	1,246



District Court Probation: Pre-Sentence Investigation July 2017 - present

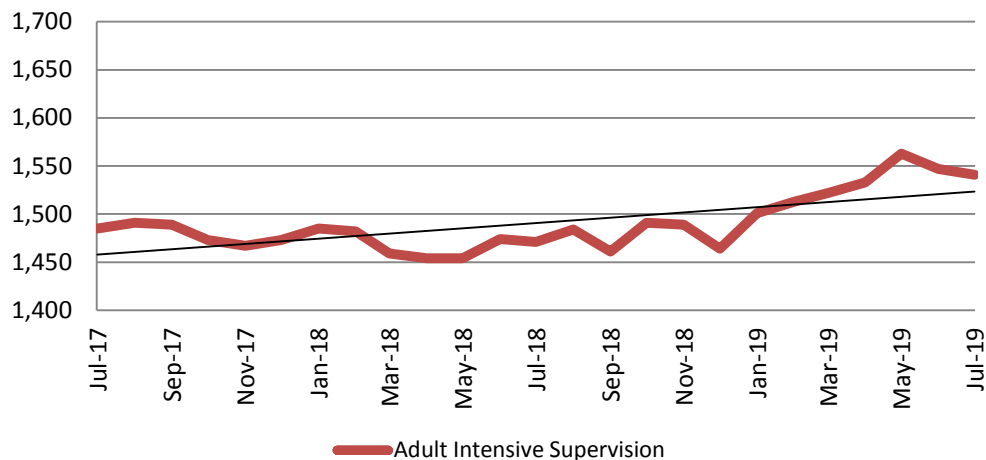


July	2017	2018	2019
Carried Over	215	231	221
Assigned	175	176	182
Completed	162	141	211



Community Corrections

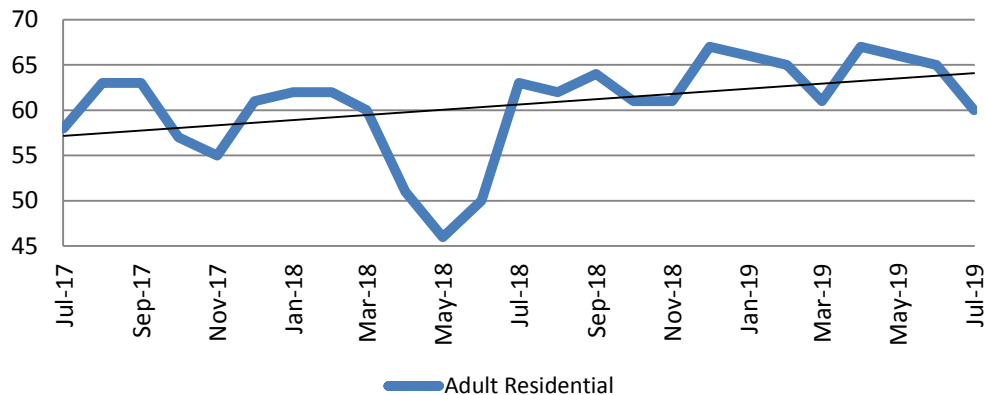
**Adult Intensive Supervision Probation (AISP):
ADP July 2017- present**



Year	July	July YTD Avg.
2017	1,485	1,559
2018	1,471	1,468
2019	1,541	1,531

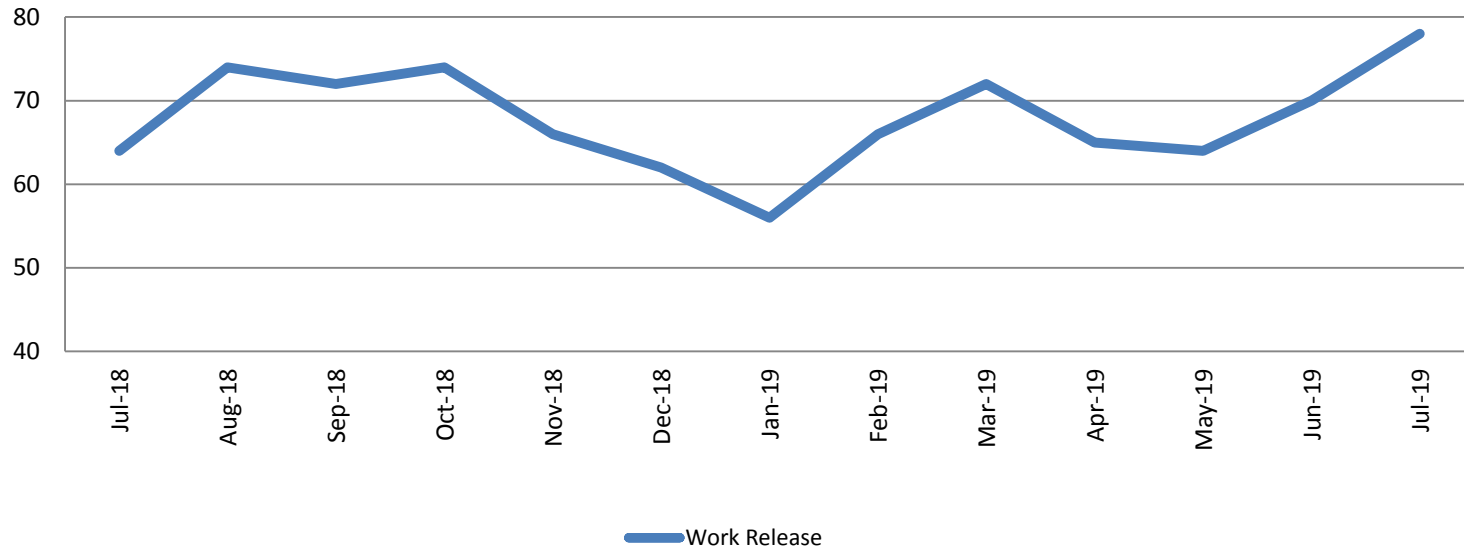
Year	July	July YTD Avg.
2017	58	59
2018	63	56
2019	60	64

**Adult Residential: ADP
July 2017 - present**



Community Corrections

Work Release: ADP July 2018 - present

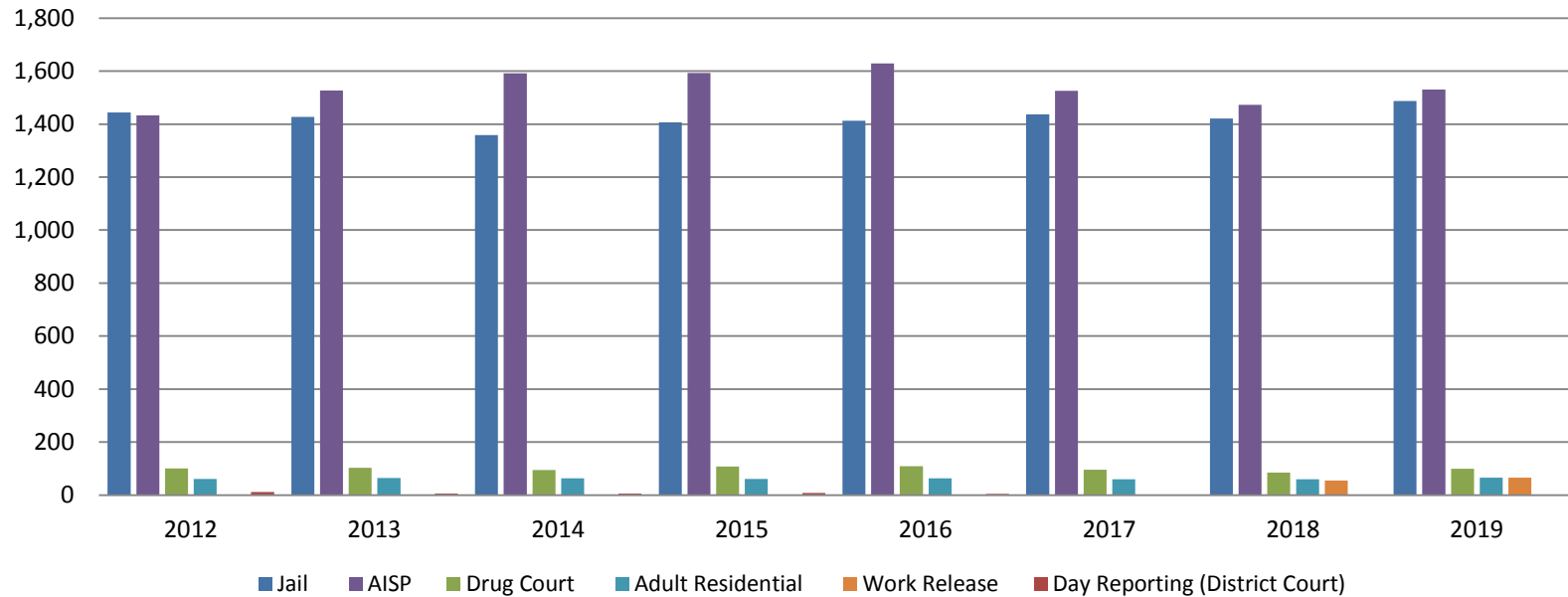


Month Year	Total	YTD Avg.
July 2018	64	44
July 2019	78	67



Correlation: Total & Sedgwick County Programs (Adult)

Total Annual ADP 2012-Present



2017

2018

2019

Jail

1,437

1,421

1,487

AISP

1,526

1,472

1,530

Drug Court

96

85

99

Adult Residential

59

59

65

Work Release

0

55

66

Day Reporting (DC)

0

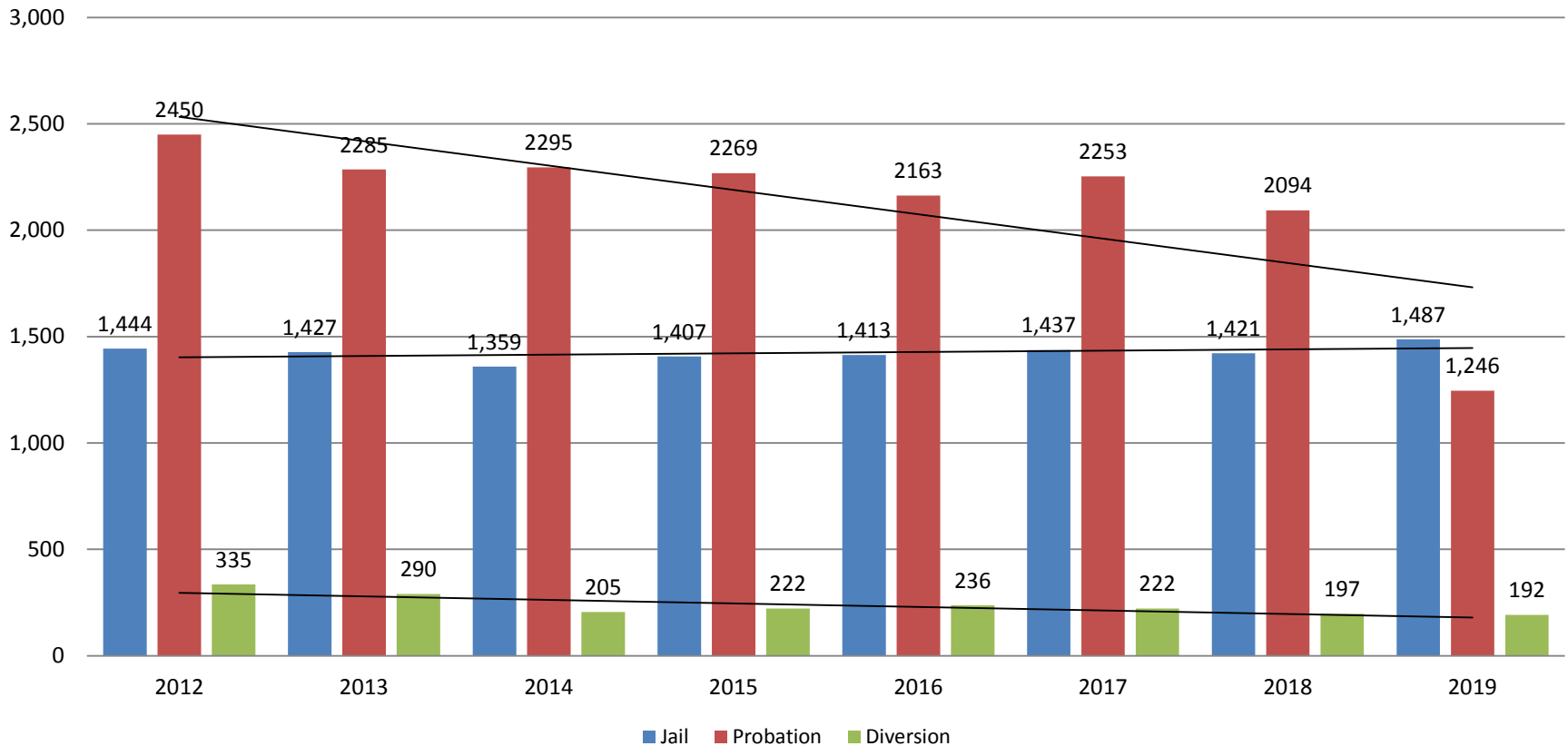
0

0



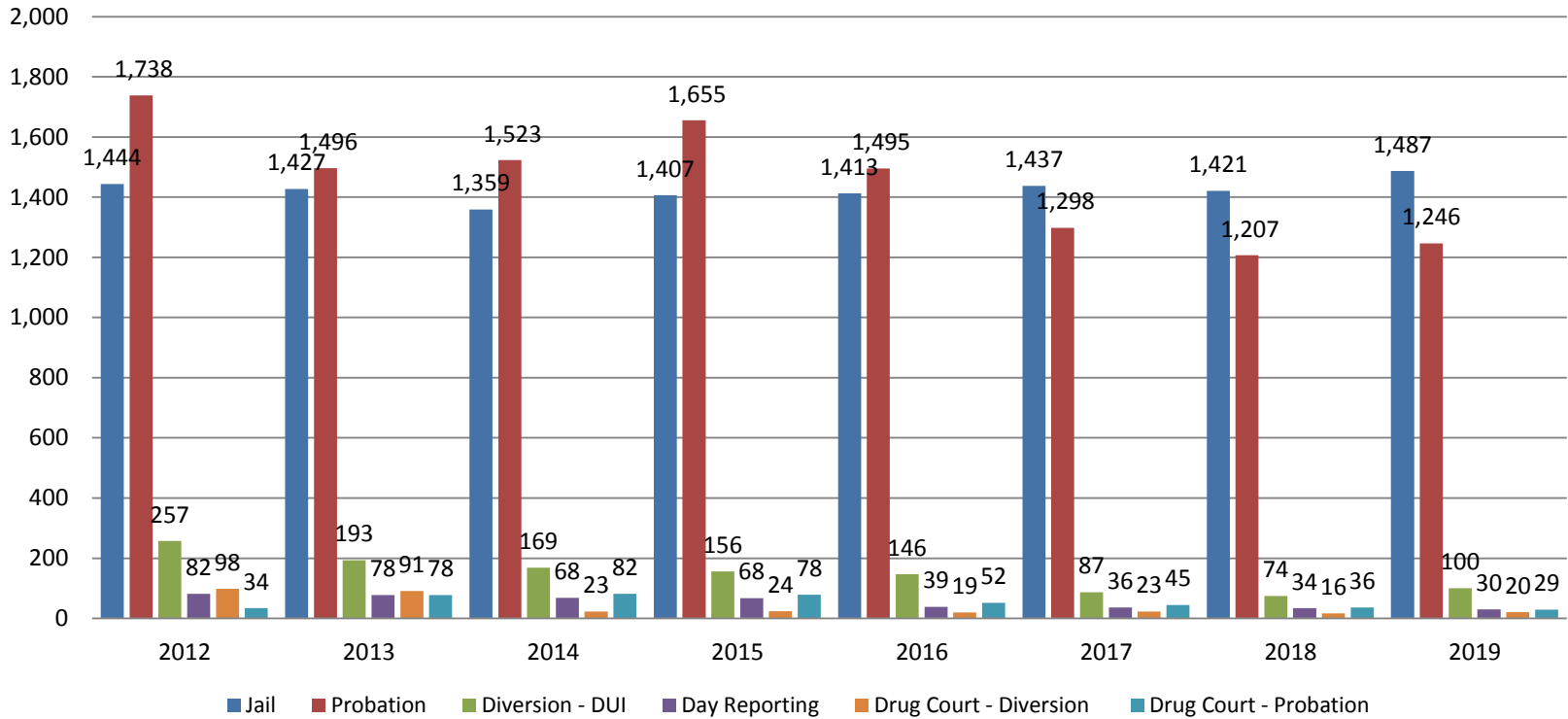
Correlation: Total & District Court Programs

Total Annual ADP: 2012 - Present



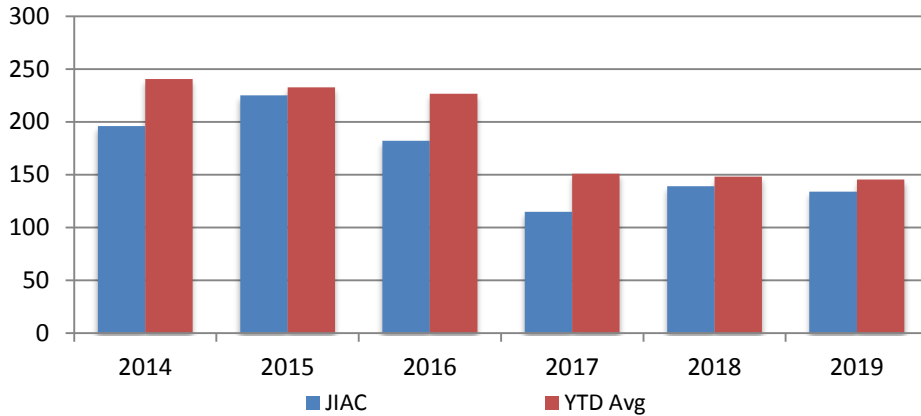
Correlation: Total & City of Wichita / Municipal Court Programs

Total Annual ADP: 2012 - present



Juvenile

JIAC Intakes
July 2014 - present

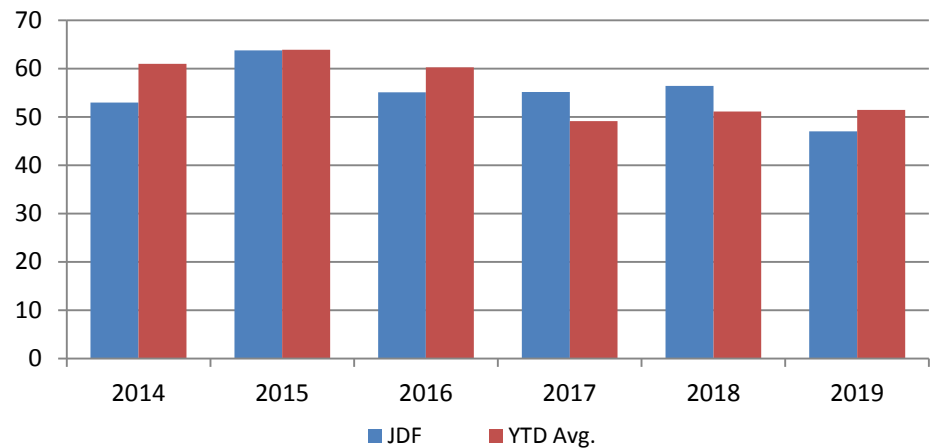


Year	July	July YTD Avg.
2014	196	241
2015	225	233
2016	182	227
2017	115	151
2018	139	148
2019	134	145

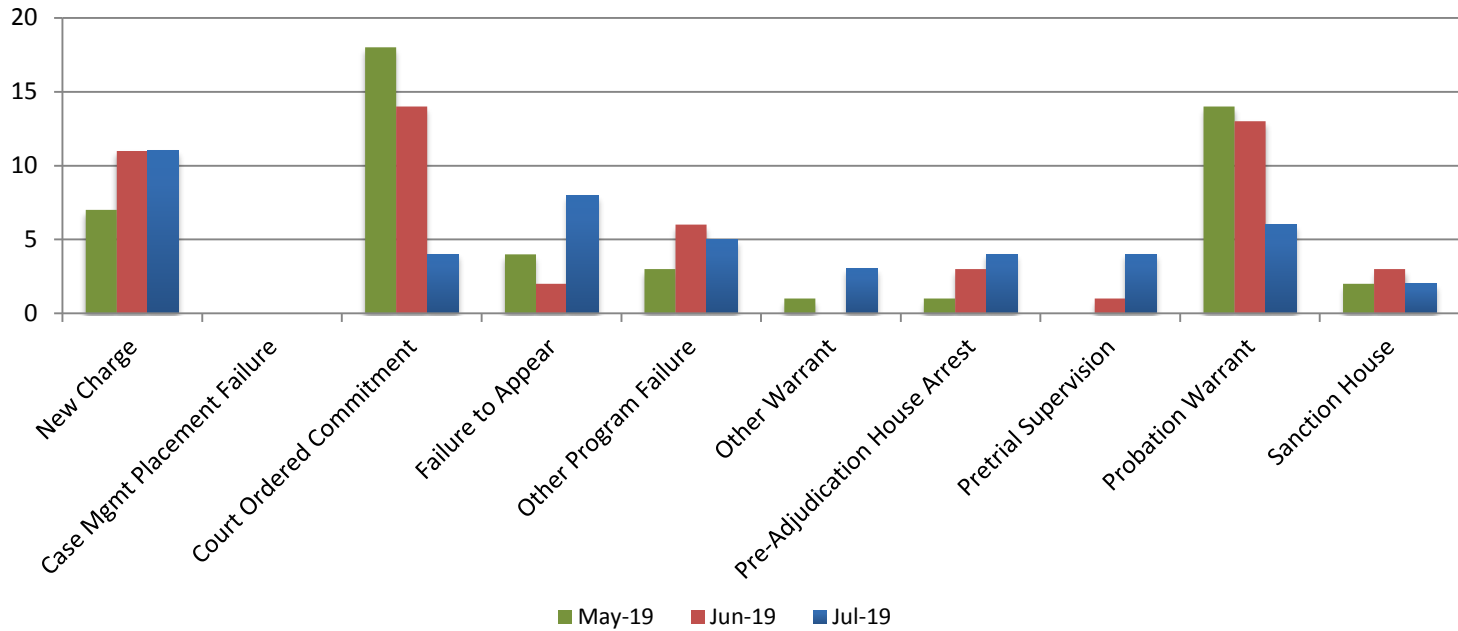
Year **July** **July YTD Avg.**

2014	53	61
2015	64	64
2016	55	60
2017	55	49
2018	56	51
2019	47	51

JDF ADP
July 2014 - present



Reason for JDF Admits



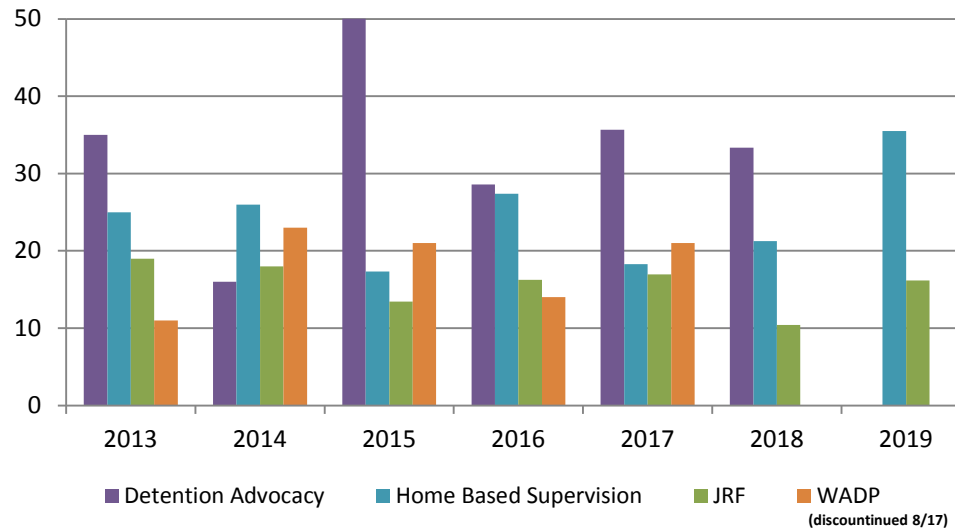
Reason for JDF Admits

Reason	July 2018	July 2019
New Charges	9	11
Case Management Placement Failures	1	0
Court Ordered Commitment	11	4
Failure to Appear	6	8
Other Program Failure	6	5
Other Warrant	3	3
Pre-Adjudication House Arrest	4	4
Pretrial Supervision	1	4
Probation Warrant	11	6
Sanction House	2	2



Juvenile Detention Alternatives

ADP: July 2013- Present



Juvenile Detention Services

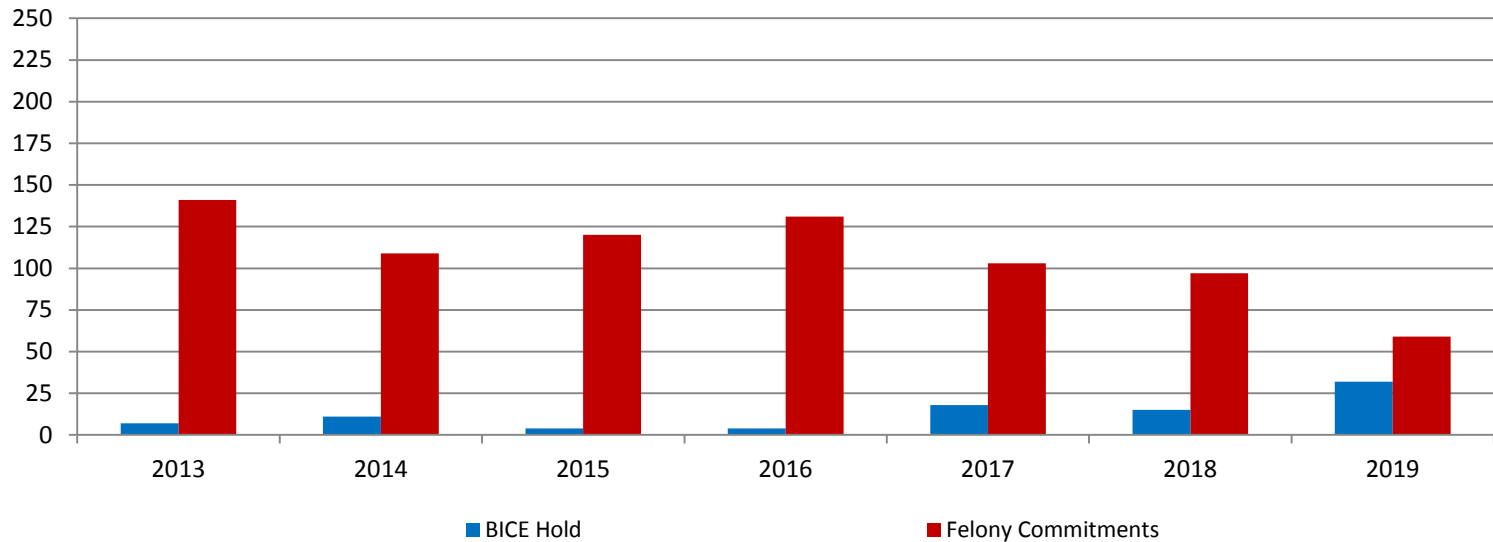
July ADP	2016	2017	2018	2019
Juvenile Detention Facility	55	55	56	47
Juvenile Residential Facility	16	17	10	16
Home Based Supervision	27	18	21	36
Detention Advocacy Case Management Services	29	36	33	ND
Weekend Alternative Detention Program (total)	11	7	0	N/A

July YTD AVERAGE	2016	2017	2018	2019
Juvenile Detention Facility	60	49	51	51
Juvenile Residential Facility	16	15	12	14
Home Based Supervision	26	22	26	28
Detention Advocacy Case Management Services	33	35	32	ND
Weekend Alternative Detention Program	15	15	0	N/A



Monthly Jail Snapshot: July 31, 2019

Snapshots July 2013 - Present

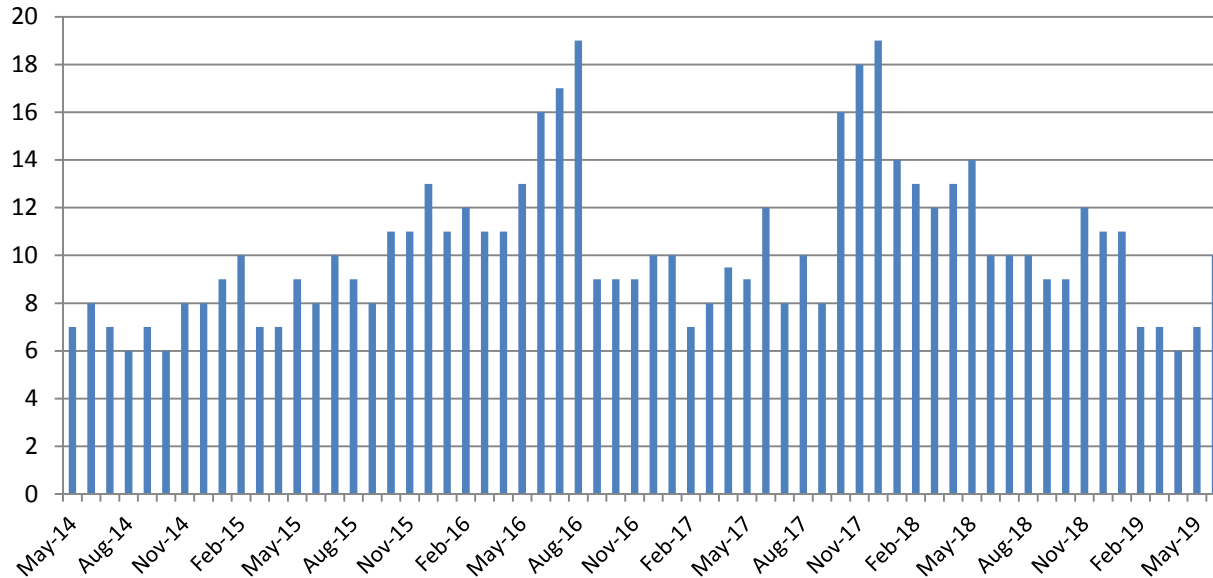


BICE Hold	2013	2014	2015	2016	2017	2018	2019
July	7	11	4	4	18	15	32

Felony Commitments	2013	2014	2015	2016	2017	2018	2019
July	141	109	120	131	103	97	59



Journal Entry Completion (Average Days) May 2014-Present



June	2014	2015	2016	2017	2018	2019
Avg. Days	8	8	16	12	10	10
YTD Avg.	8	8	12	9	12.6	8

