

SERVICE TYPE IDENTIFICATION PLAN

LOWER LEVEL BUILDING INFORMATION

FLOOR CARE:	APPROXIMATE
CARPET:	4,800 SQ FT
NON-CARPET, RESILIENT:	800 SQ FT
NON-CARPET, TILE:	950 SQ FT

TOTAL CLEANABLE SQ FT 6,550 SQ FT

FLOOR CARE: SERVICE TYPE 'E'

CARPET:	1,500 SQ FT
NON-CARPET, RESILIENT:	0 SQ FT
NON-CARPET, TILE:	0 SQ FT

TOTAL SERVICE TYPE 'E' SQ FT 1,500 SQ FT

NUMBER OF FIXTURES: APPROXIMATE

STOOL /URINAL	4 TOTAL
LAVATORIES	2 TOTAL
SINKS	1 TOTAL
MOP SINK	1 TOTAL
DRINKING FOUNTAIN	2 TOTAL

SPECIAL CLEAN AREA

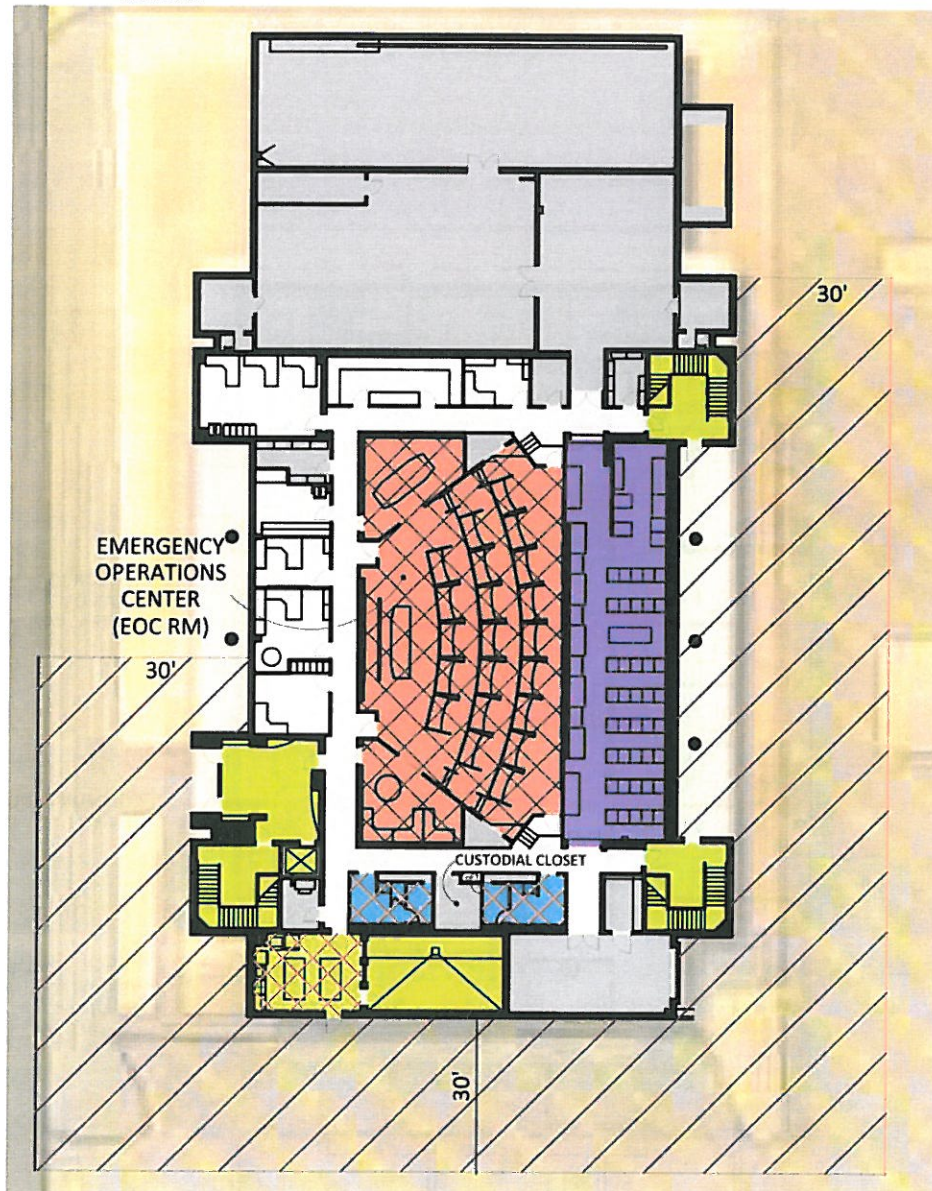
- EMERGENCY OPERATION CENTER (EOC RM):
NON-EMERGENCY TIMES: SERVICE TYPE B.
EMERGENCY TIMES: HOURS OF OPERATION
TIME CHANGE TO 24 HOURS/ 7 DAYS A
WEEK, HOLIDAYS DO NOT APPLY:
- SERVICE TYPE B MODIFIED: INCLUDE
DAILY TRASH, DAILY VACUUM- USE
PUSH POWERED IN EOC RM.
- SERVICE TYPES MODIFIED: INCLUDE
ADDITIONAL DAILY CLEAN AT 1PM.
- EMERGENCY FREQUENCY AVERAGES:
ANNUALLY 2 WEEKS IN SPRING.

CUSTODIAL CONTRACT: RFP 13-0083

DATE: 2013, FALL

LEGEND:

- SERVICE TYPE A *Daily*
- SERVICE TYPE B *Weekly*
- SERVICE TYPE C
- SERVICE TYPE D *Daily*
- SERVICE TYPE E MODIFIED:
REDUCED TO ANNUAL CLEAN ONLY
- CUSTODIAL NO WORK.
- EXTENT OF EXTERIOR CLEAN. 30' AWAY FROM BUILDING AS SHOWN.



PUBLIC SAFETY – LOWER LEVEL

NOT TO SCALE

SERVICE TYPE IDENTIFICATION PLAN

UPPER LEVEL BUILDING INFORMATION

FLOOR CARE:	APPROXIMATE
CARPET:	4,575 SQ FT
NON-CARPET, RESILIENT:	1,850 SQ FT
NON-CARPET, TILE:	1,250 SQ FT
RAISED ACCESS FLOOR, CARPET	3,525 SQ FT

TOTAL CLEANABLE SQ FT 11,200 SQ FT

FLOOR CARE: SERVICE TYPE 'E'

CARPET:	0 SQ FT
NON-CARPET, RESILIENT:	0 SQ FT
NON-CARPET, TILE:	0 SQ FT

TOTAL SERVICE TYPE 'E' SQ FT 0 SQ FT

NUMBER OF FIXTURES:	APPROXIMATE
STOOL /URINAL	6 TOTAL
LAVATORIES	4 TOTAL
SINKS	1 TOTAL
SHOWERS	2 TOTAL
MOP SINK	1 TOTAL
DRINKING FOUNTAIN	2 TOTAL

SPECIAL CLEAN AREA

COMMUNICATIONS CENTER:
CLEAN: SERVICE TYPE B MODIFIED TO INCLUDE DAILY TRASH, VACUUM AND DUST HORIZONTAL SURFACES. CLEAN TO OCCUR DURING EVENING. VACUUM WITH CENTRAL VAC SYSTEM PROVIDED BY COUNTY.

FLOOR: RAISED ACCESS FLOOR, CARPET TILES.
QUARTERLY CLEAN FLOORING: PROVIDE SPECIAL PROVISIONS REQUIRED FOR RAISED ACCESS FLOOR DURING SHAMPOO CLEAN. EACH CARPET CLEAN REQUIRES (2) PHASES WHILE HALF OF ROOM TEMPORARILY RELOCATES.
ADDITIONAL CLEAN: DUST OPEN CEILING, BEAMS, PENDNANT FIXTURES, HVAC, ETC. ANNUALLY.

DURING EMERGENCY TIMES: HOURS OF OPERATION TIME CHANGE TO 24 HOURS/ 7 DAYS A WEEK, HOLIDAYS DO NOT APPLY:

- SERVICE TYPES MODIFIED: INCLUDE ADDITIONAL DAILY CLEAN AT 1PM.
- EMERGENCY FREQUENCY AVERAGES: ANNUALLY 2 WEEKS IN SPRING.

CUSTODIAL CONTRACT: RFP 13-0083

DATE: 2013, FALL

LEGEND:

- SERVICE TYPE A
- SERVICE TYPE B
- SERVICE TYPE C
- SERVICE TYPE D
- SERVICE TYPE E (NOT USED)
- CUSTODIAL NO WORK.

